



Microresistivity Log

DIGITAL LOG (785) 625-3858

API No.	15-163-23,808-00-00	
Company	Murfin Drilling Co., Inc	
Well	Collins No. 1-28	
Field	Wildcat	
County	Rooks	State
		Kansas
Location	330' FSL & 2200' FEL	
Sec: 28	Twp: 10 S	Rge: 18 W
Permanent Datum	Ground Level	Elevation 2060
Log Measured From	Kelly Bushing	5 Ft. Above Perm. Datum
Drilling Measured From	Frotkelly Bushing	
		Other Services CNL/CDL DIL/BHCS
		Elevation K.B. 2065 D.F. 2060 G.L. 2060

Date	6/25/09	
Run Number	Two	
Depth Driller	3720	
Depth Logger	3719	
Bottom Logged Interval	3718	
Top Log Interval	2900	
Casing Driller	8.625 @ 207	
Casing Logger	205	
Bit Size	7.875	
Type Fluid in Hole	Chemical	
Salinity, ppm CL	3.800	
Density / Viscosity	9.4	54
pH / Fluid Loss	10.0	9.2
Source of Sample	Flowline	
Rm @ Meas. Temp	.4 @	83
Rmf @ Meas. Temp	.3 @	83
Rmc @ Meas. Temp	.54 @	83
Source of Rmf / Rmc	Charts	
Rm @ BHT	.29 @	115
Operating Rig Time	5 1/2 Hours	
Max Rec. Temp. F	115	
Equipment Number	4	
Location	Hays	
Recorded By	K. Bange	
Witnessed By	Rocky Milford	

<<< Fold Here >>>

All interpretations are opinions based on inferences from electrical or other measurements and we cannot and do not guarantee the accuracy or correctness of any interpretation, and we shall not, except in the case of gross or willful negligence on our part, be liable or responsible for any loss, costs, damages, or expenses incurred or sustained by anyone resulting from any interpretation made by any of our officers, agents or employees. These interpretations are also subject to our general terms and conditions set out in our current Price Schedule.

Comments

Thank you for using Log-Tech, Inc.
(785) 625-3858

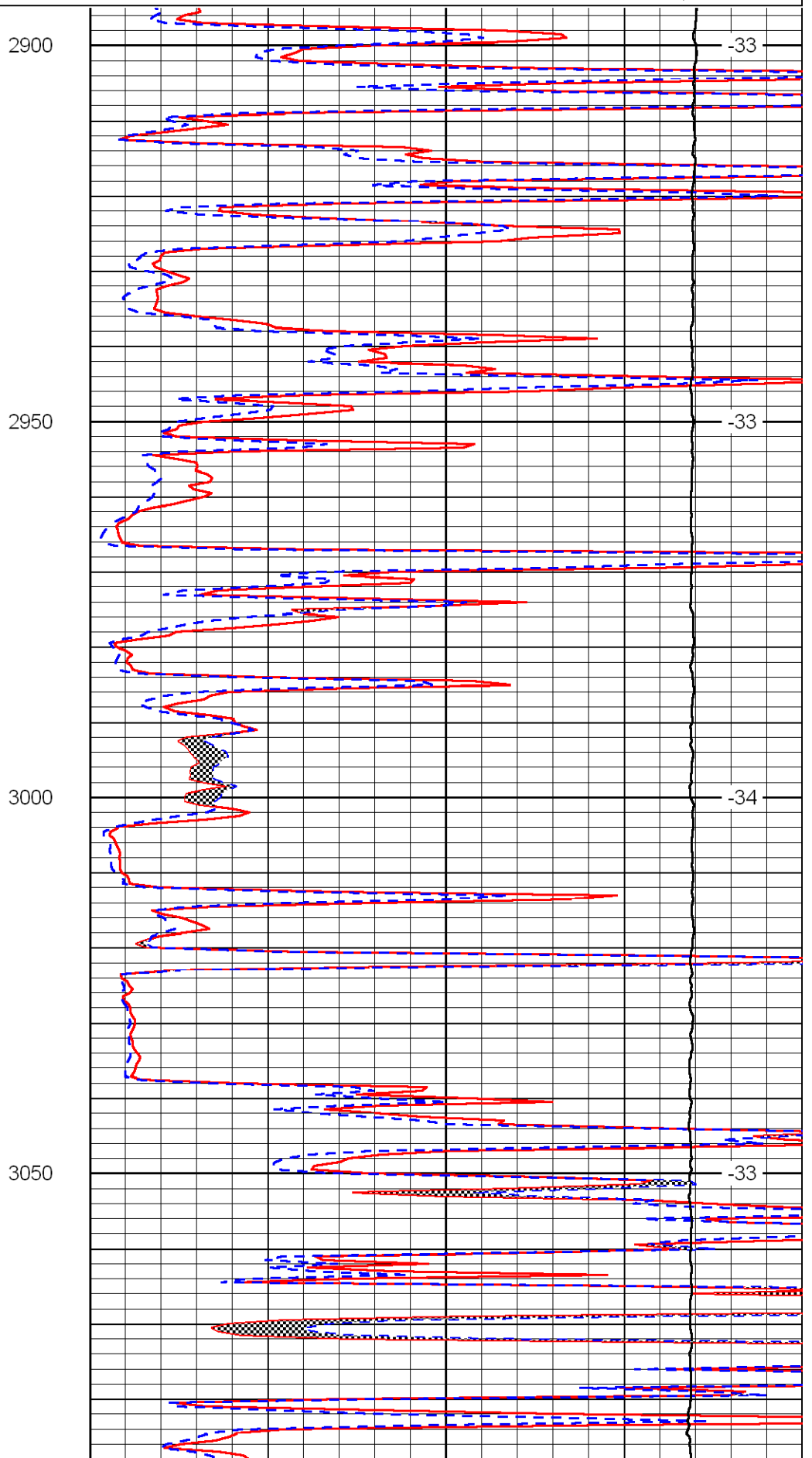
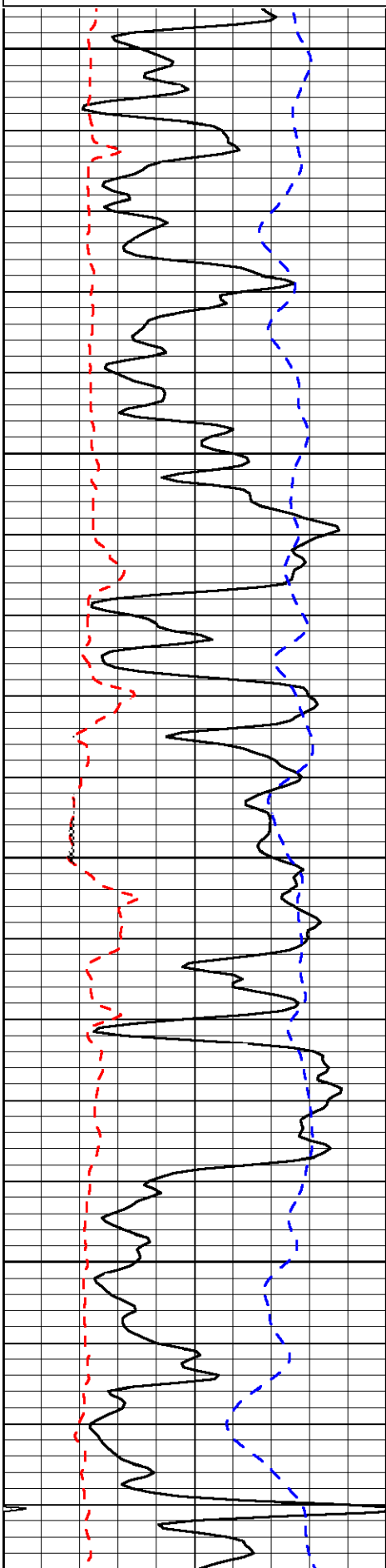
Hays, 18 N to cc rd, 1 1/2 W to 16 rd, 1/2 S, 1/2 W, 1/2 S into

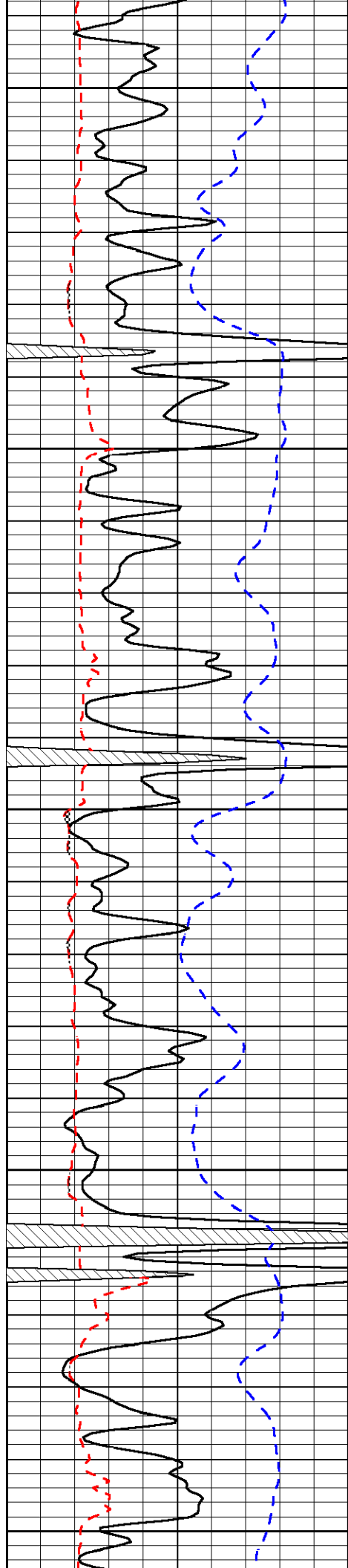
Database File: c:\warrior\data\murfin_collins no. 1-28\murfin062509hd.db
 Dataset Pathname: dil/murf2in
 Presentation Format: micro
 Dataset Creation: Thu Jun 25 16:06:00 2009
 Charted by: Depth in Feet scaled 1:240

0	Gamma Ray	150
6	Micro Log Caliper (in)	16
-200	SP (MV)	0

0	Micro Inverse 1 X 1 (Ohm-m)	40
0	Micro Normal 2" (Ohm-m)	40
10000	Line Weight (lb)	0

LSPD
(ft/min)





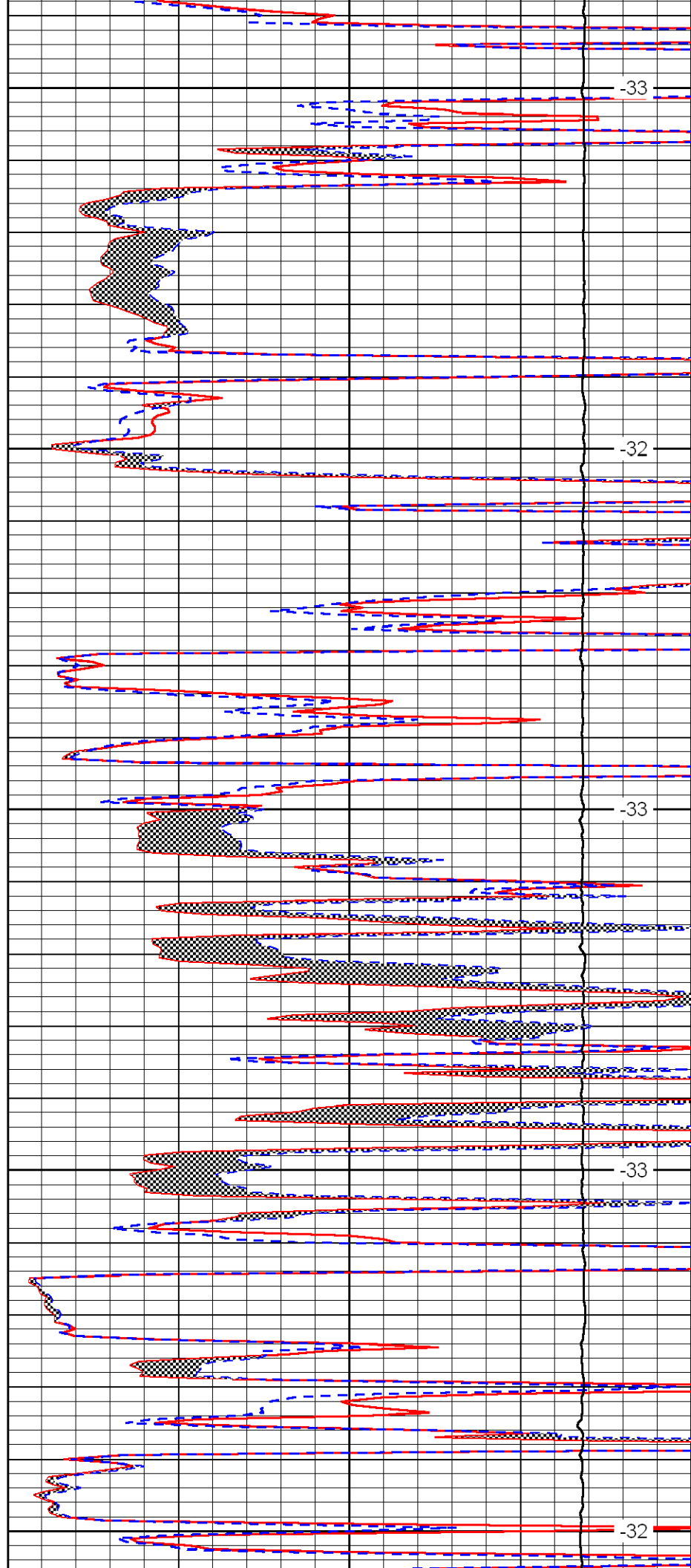
3100

3150

3200

3250

3300



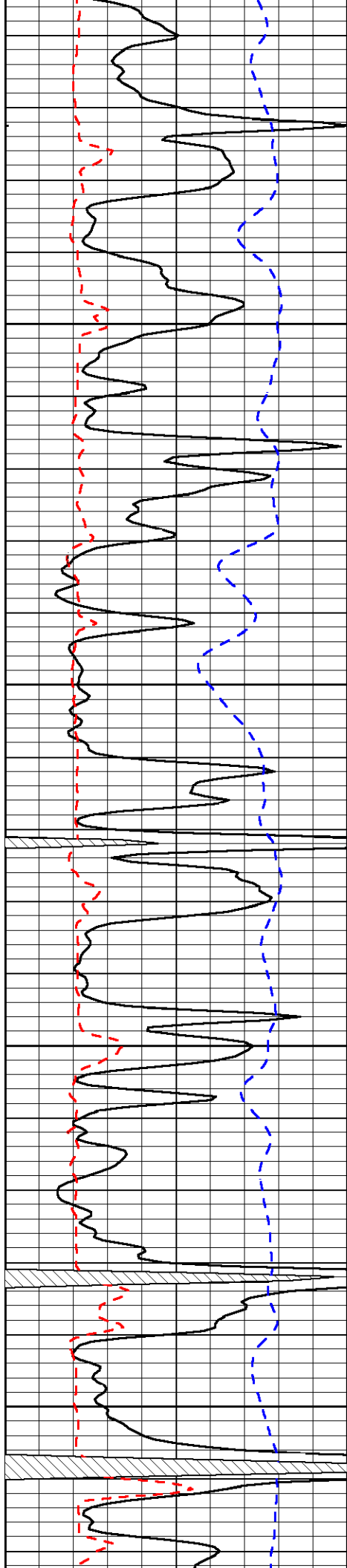
-33

-32

-33

-33

-32

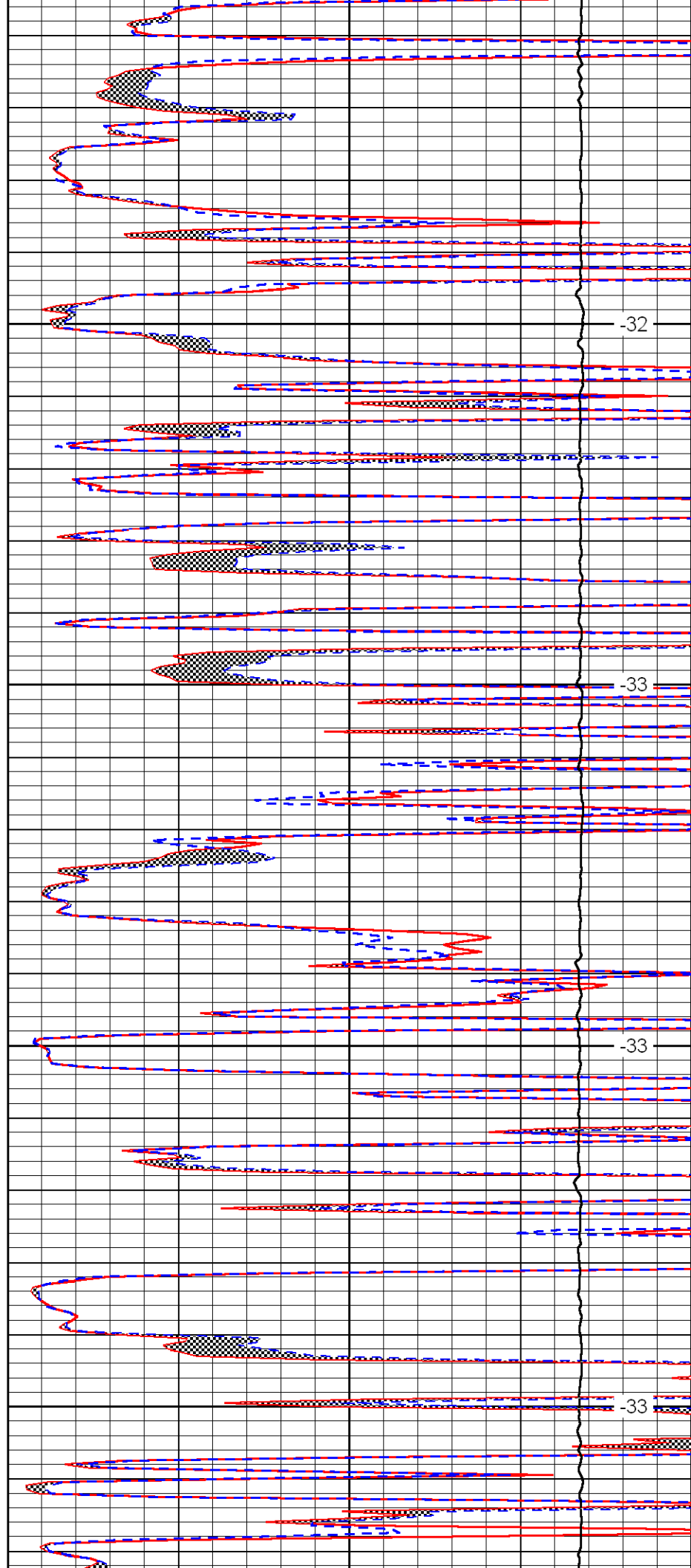


3350

3400

3450

3500

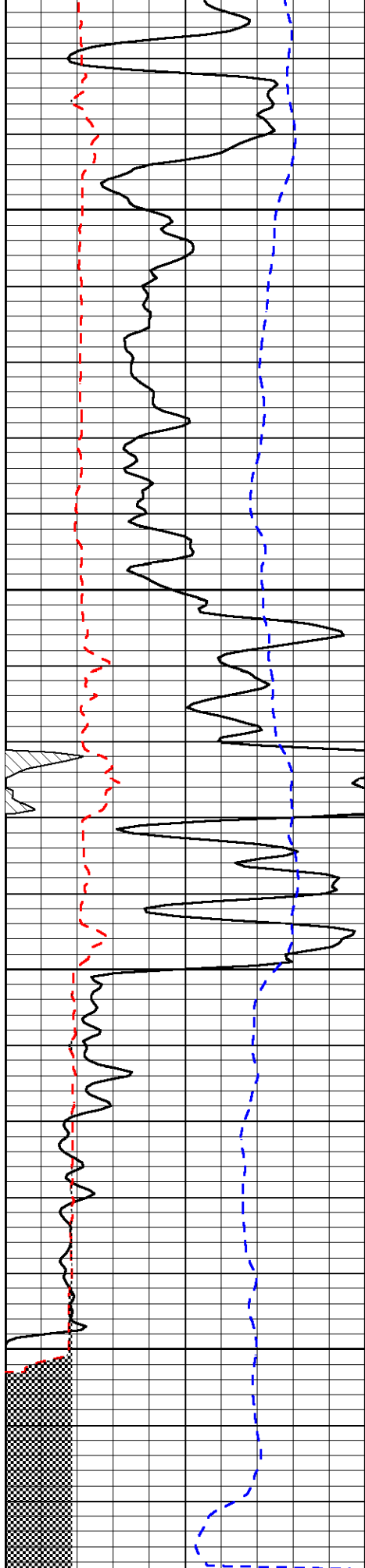


-32

-33

-33

-33

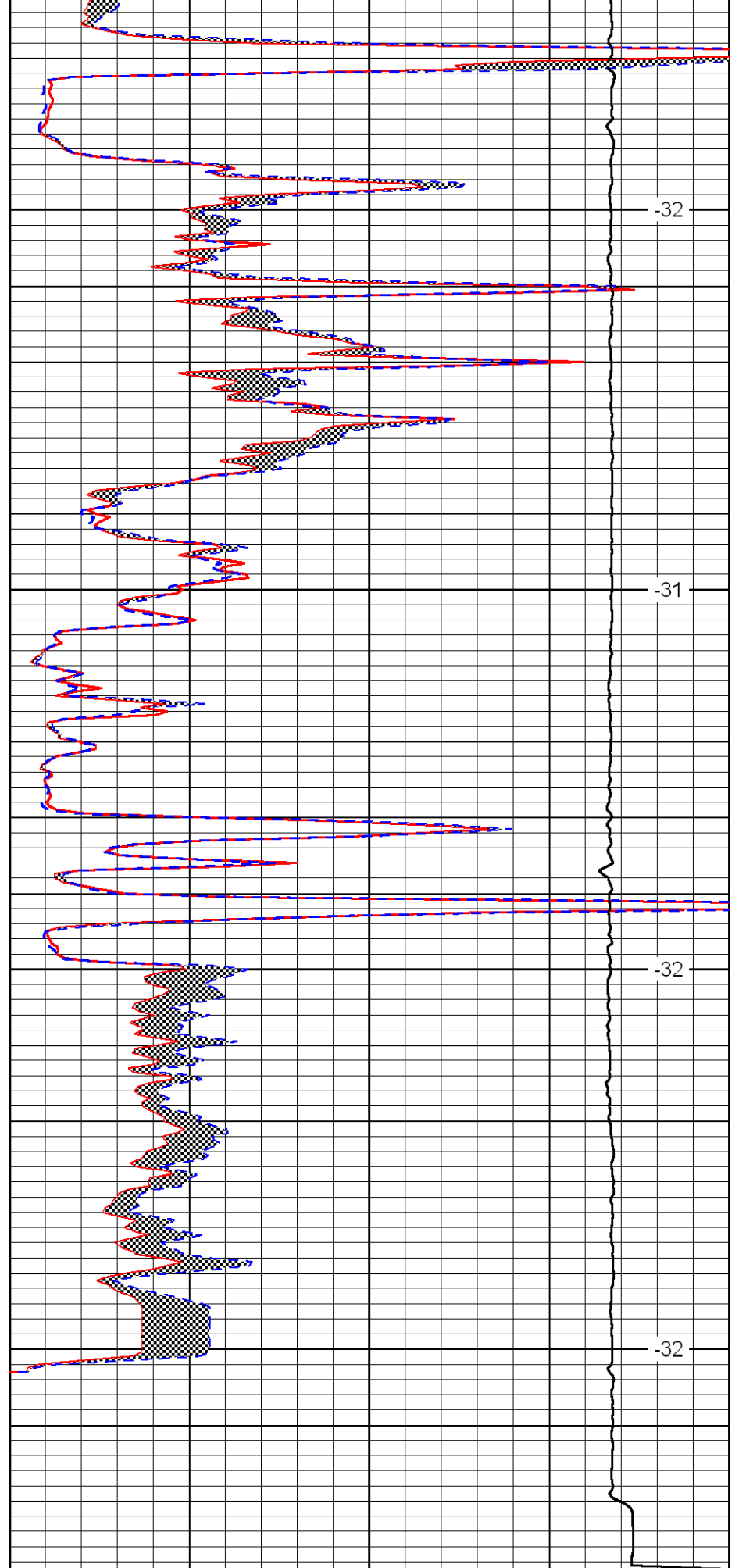


3550

3600

3650

3700



-32

-31

-32

-32

0 Gamma Ray 150

6 Micro Log Caliper (in) 16

0 Micro Inverse 1 X 1 (Ohm-m) 40

0 Micro Normal 2'' (Ohm-m) 40

-200	SP (MV)	0	10000	Line Weight (lb)	0
					LSPD (ft/min)