



# Dual Induction Log

DIGITAL LOG (785) 625-3858

API No.	15-163-23,808-00-00		
Company	Murfin Drilling Co., Inc		
Well	Collins No. 1-28		
Field	Wildcat		
County	Rooks	State	Kansas
Location	330' FSL & 2200' FEL		
Sec: 28	Twp: 10 S	Rge: 18 W	Elevation K.B. 2065 D.F. 2060 G.L. 2060
Permanent Datum	Ground Level	Elevation 2060	
Log Measured From	Kelly Bushing	5 Ft. Above Perm. Datum	
Drilling Measured From	Frothkelly Bushing		

Date	6/25/09
Run Number	One
Depth Driller	3720
Depth Logger	3719
Bottom Logged Interval	3718
Top Log Interval	0
Casing Driller	8.625 @ 207
Casing Logger	205
Bit Size	7.875
Type Fluid in Hole	Chemical
Salinity, ppm CL	3.800
Density / Viscosity	9.4 54
pH / Fluid Loss	10.0 9.2
Source of Sample	Flowline
Rm @ Meas. Temp	.4 @ 83
Rmf @ Meas. Temp	.3 @ 83
Rmc @ Meas. Temp	.54 @ 83
Source of Rmf / Rmc	Charts
Rm @ BHT	.29 @ 115
Operating Rig Time	5 1/2 Hours
Max Rec. Temp. F	115
Equipment Number	4
Location	Hays
Recorded By	K. Bange
Witnessed By	Rocky Milford

<<< Fold Here >>>

All interpretations are opinions based on inferences from electrical or other measurements and we cannot and do not guarantee the accuracy or correctness of any interpretation, and we shall not, except in the case of gross or willful negligence on our part, be liable or responsible for any loss, costs, damages, or expenses incurred or sustained by anyone resulting from any interpretation made by any of our officers, agents or employees. These interpretations are also subject to our general terms and conditions set out in our current Price Schedule.

### Comments

Thank you for using Log-Tech, Inc.  
(785) 625-3858

Hays, 18 N to cc rd, 1 1/2 W to 16 rd, 1/2 S, 1/2 W, 1/2 S into

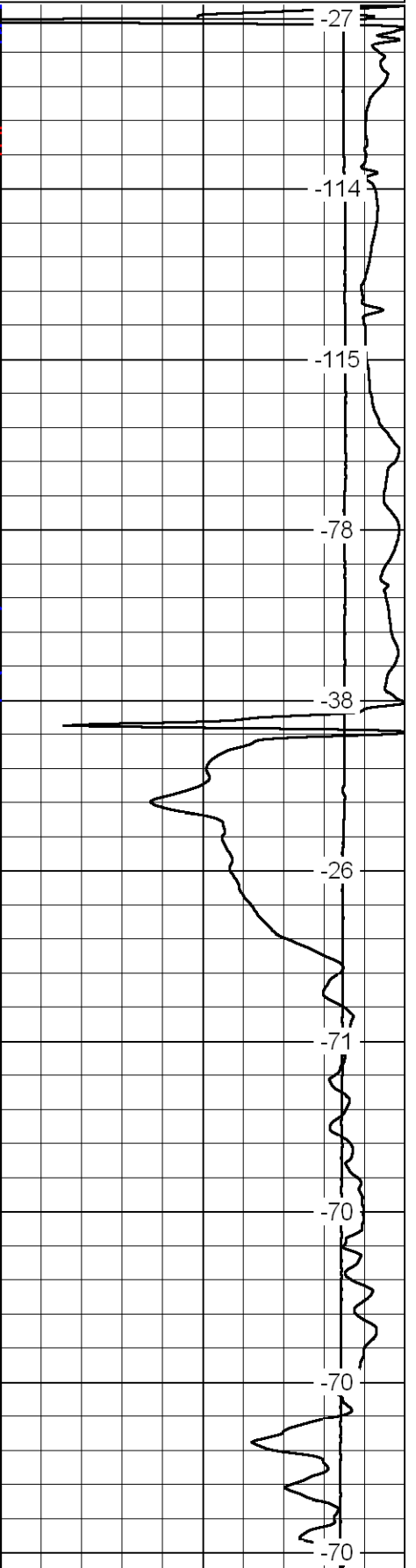
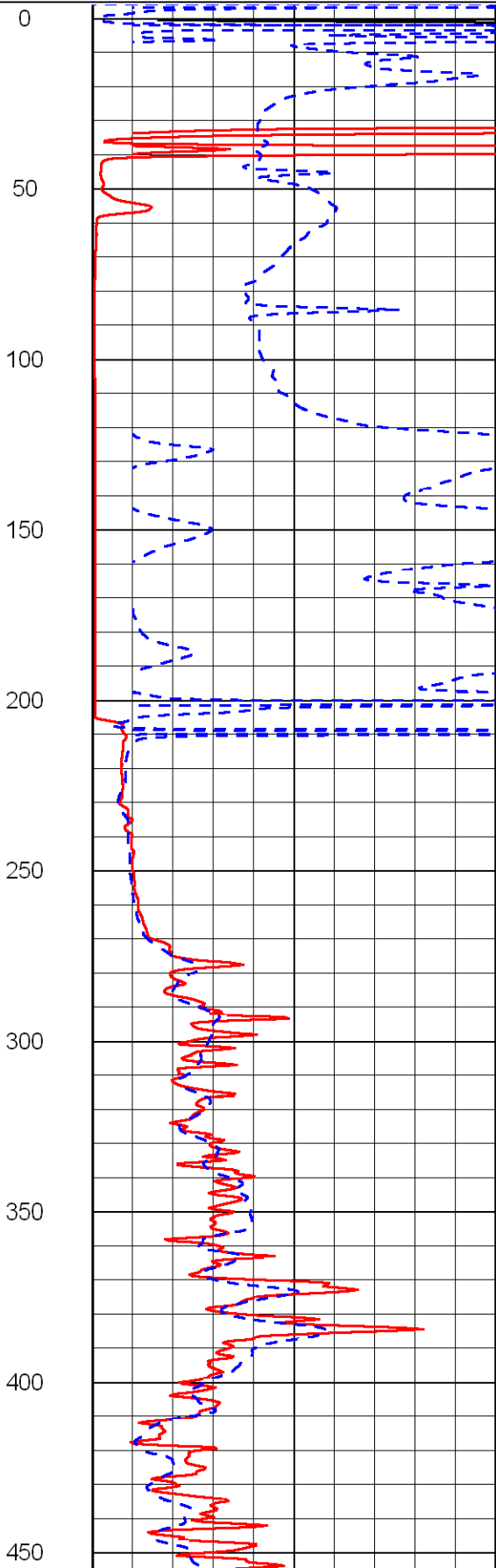
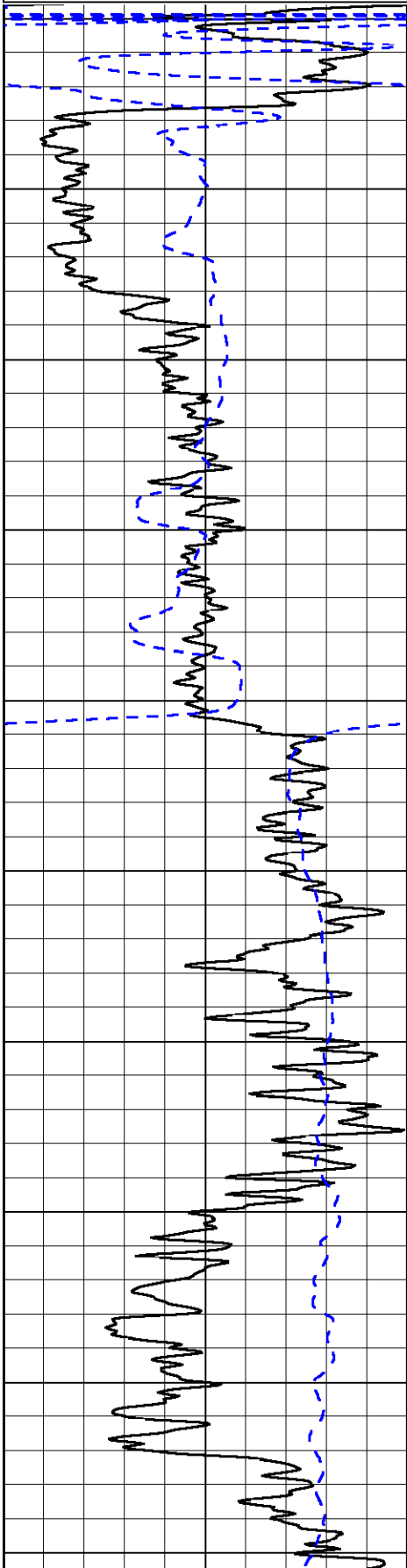
Database File: c:\warrior\data\murfin\_collins no. 1-28\murfin062509hd.db  
 Dataset Pathname: dil/murf2in  
 Presentation Format: dil2in  
 Dataset Creation: Thu Jun 25 16:06:00 2009  
 Charted by: Depth in Feet scaled 1:600

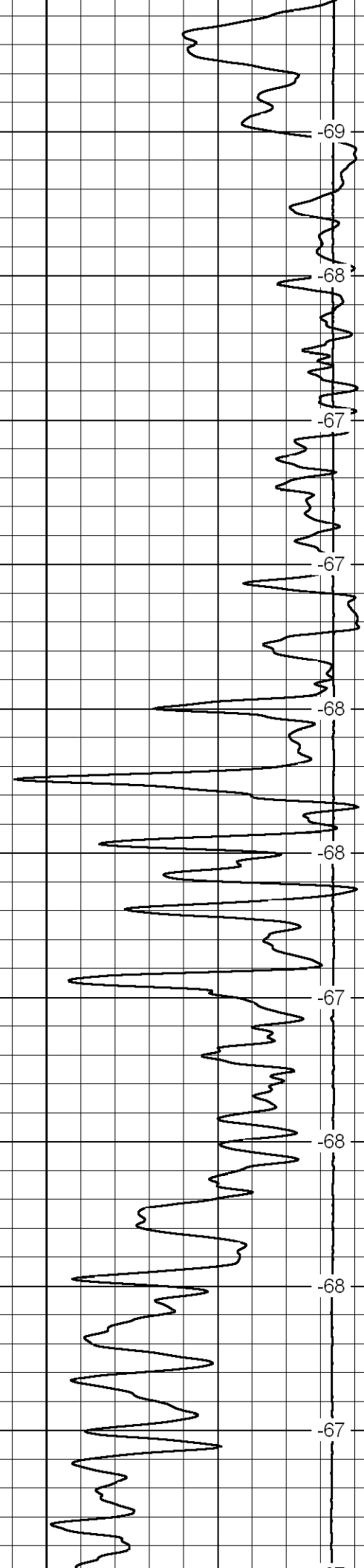
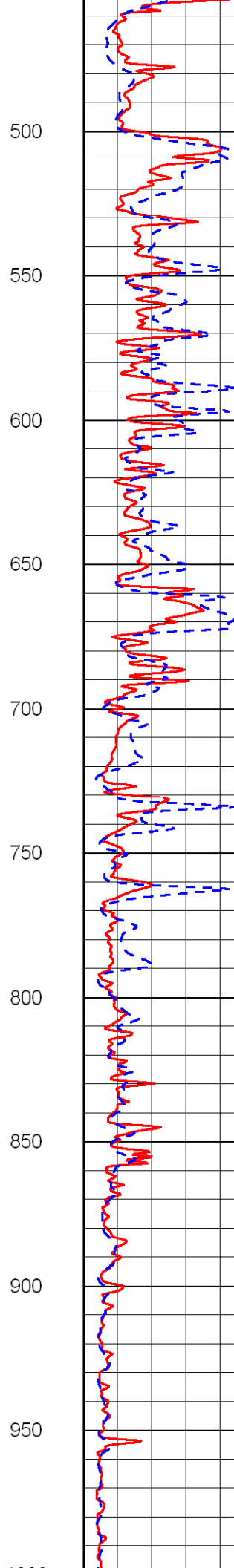
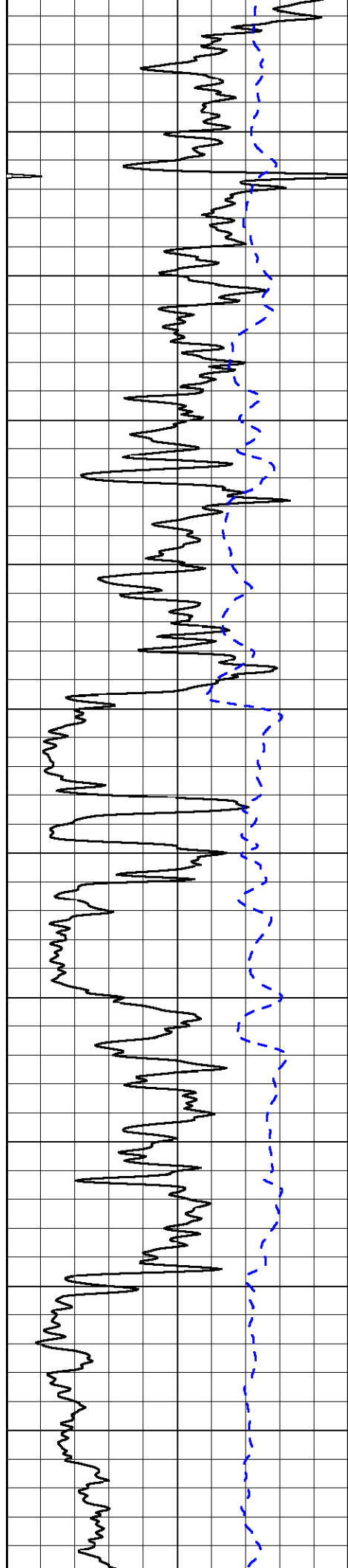
0 Gamma Ray 150  
-200 SP (MV) 0

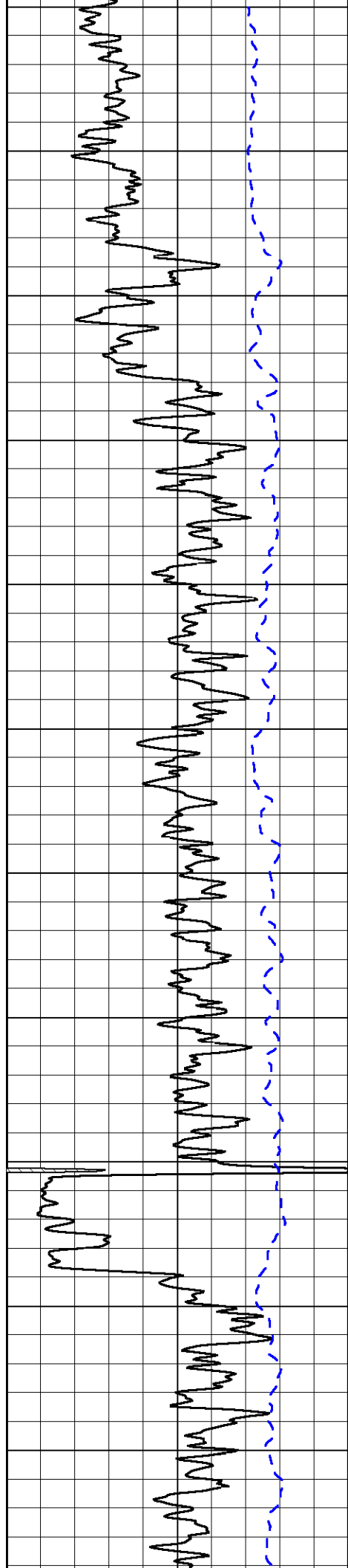
0 Shallow Resistivity (Ohm-m) 50  
0 Deep Resistivity (Ohm-m) 50  
1000 Conductivity (mmho/m) 0  
15000 Line Tension (lb) 0

LSPD  
(ft/min)

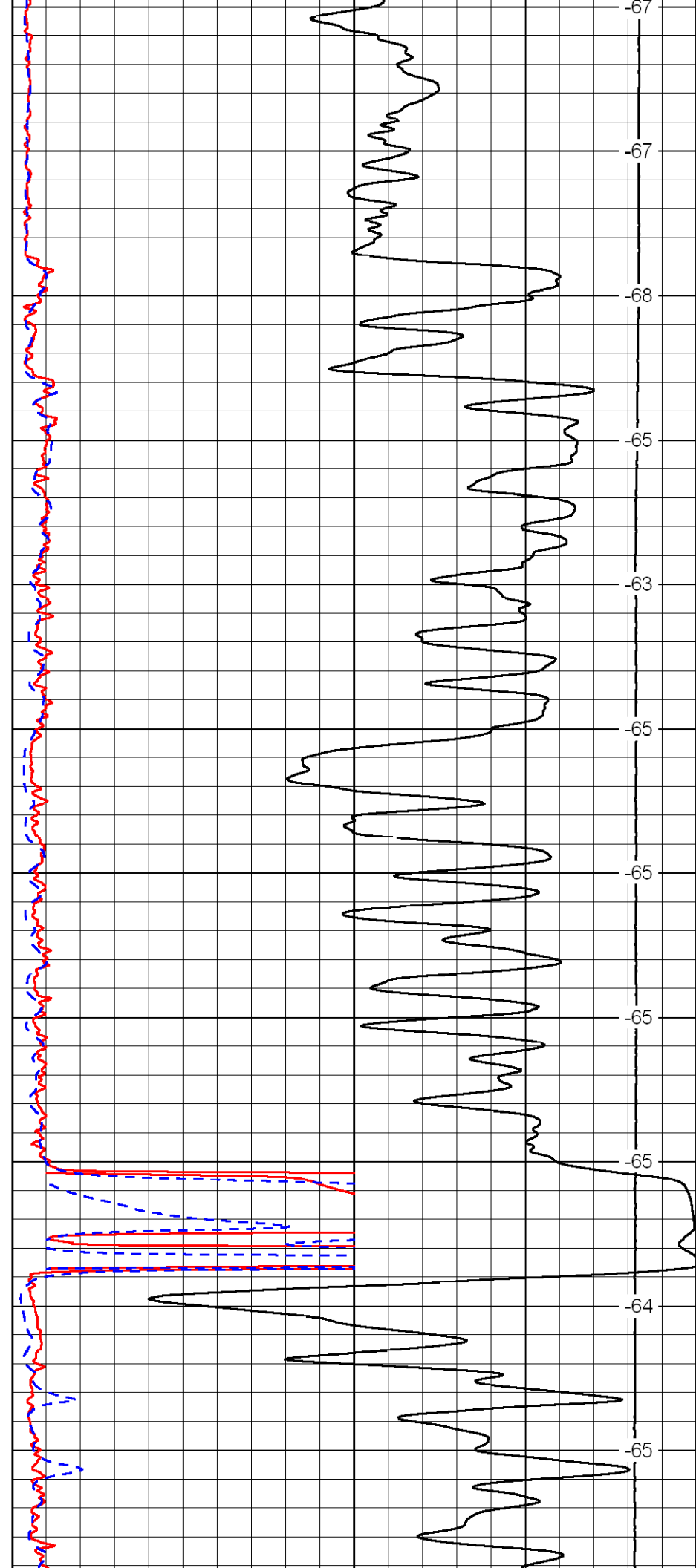
Shallow Resistivity  
50 (Ohm-m) 500  
50 Deep Resistivity (Ohm-m) 500

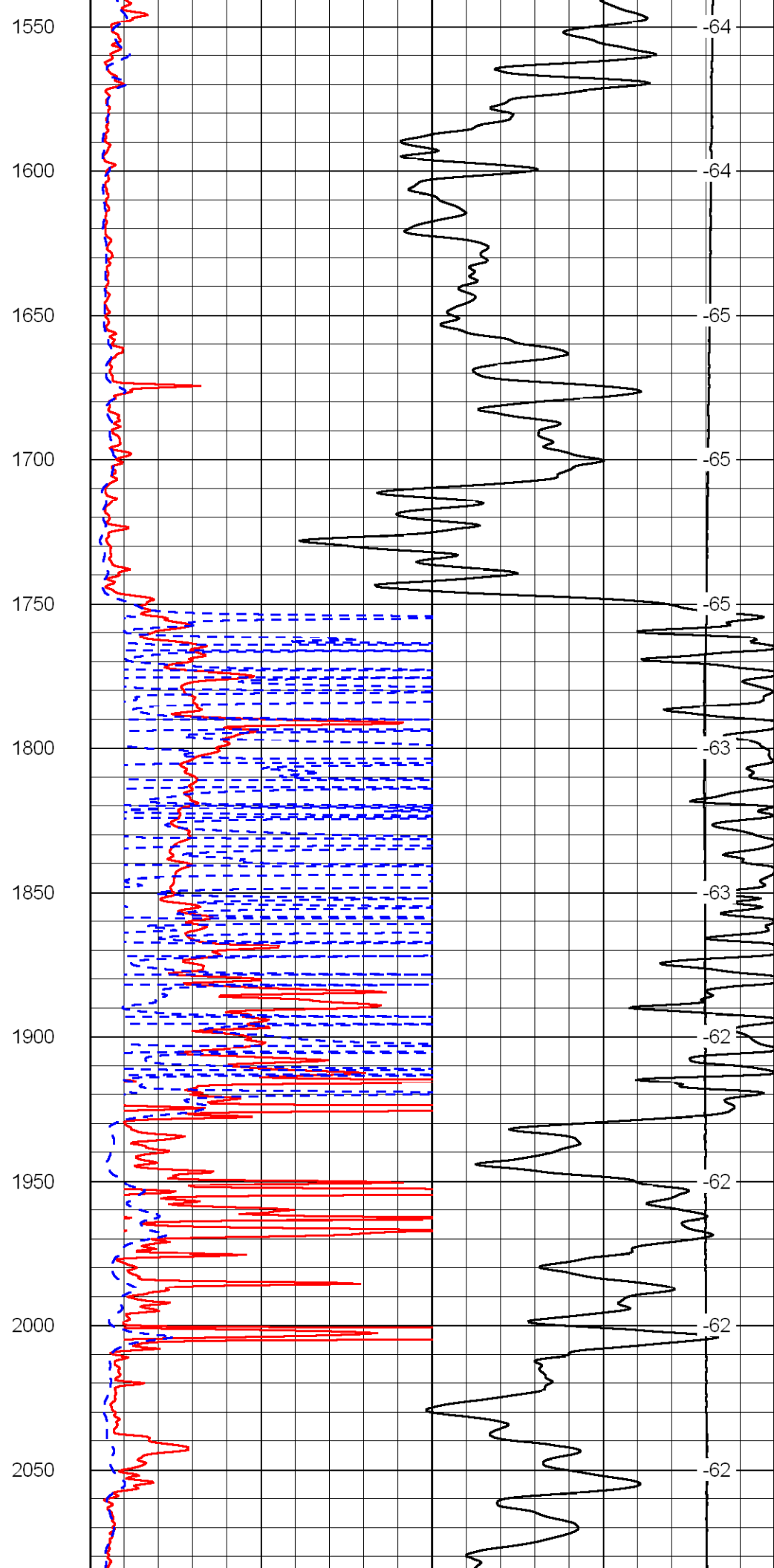
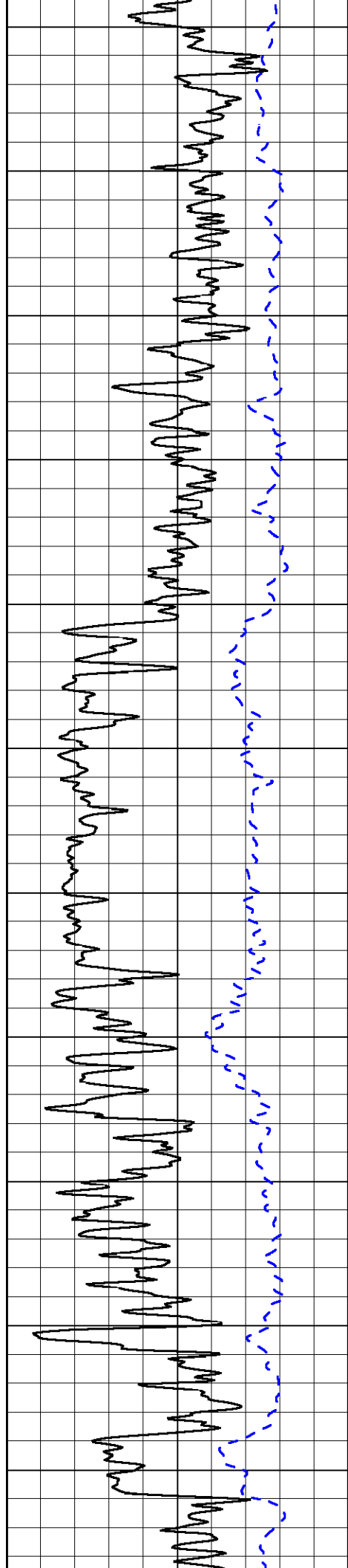


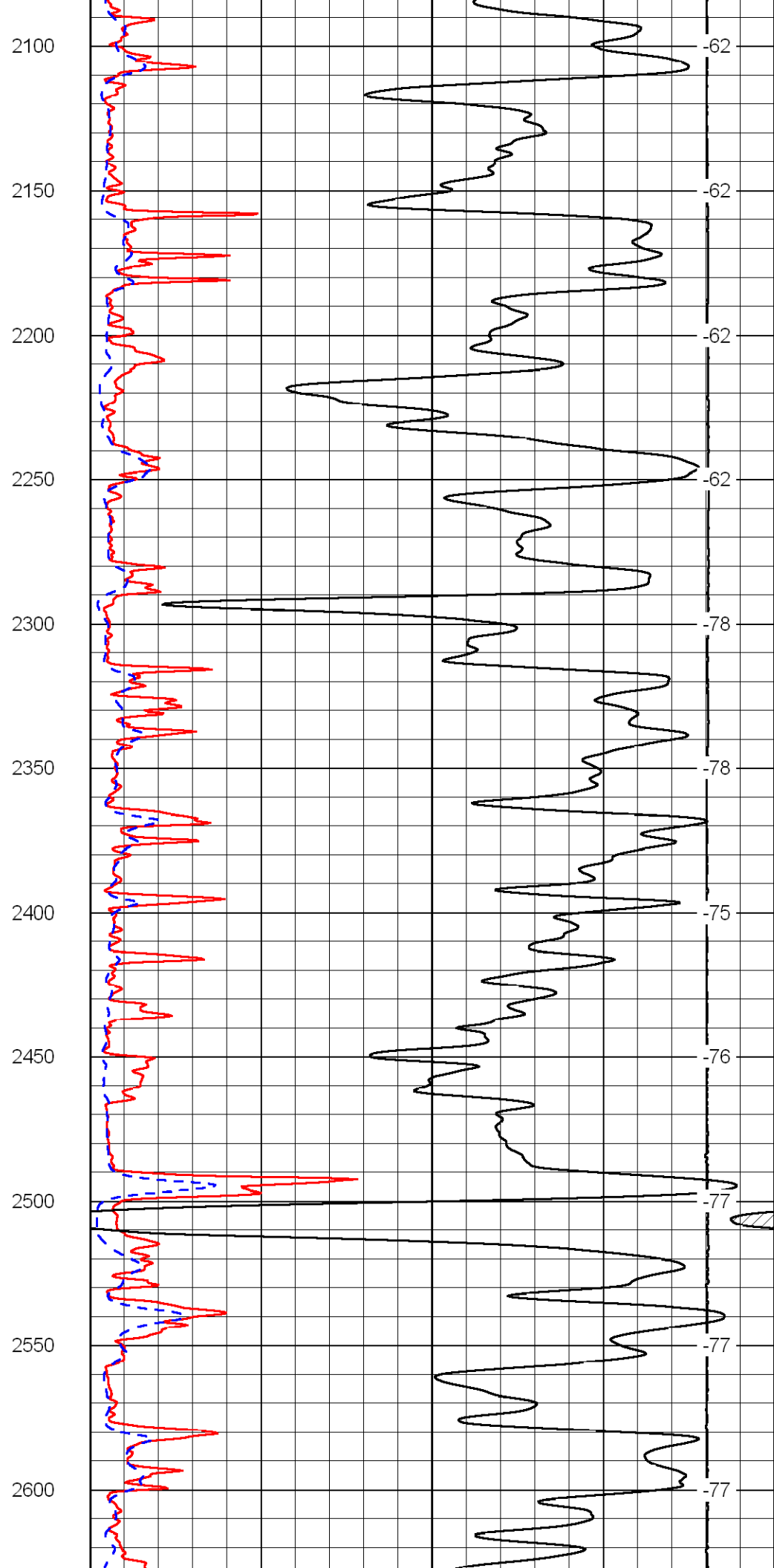
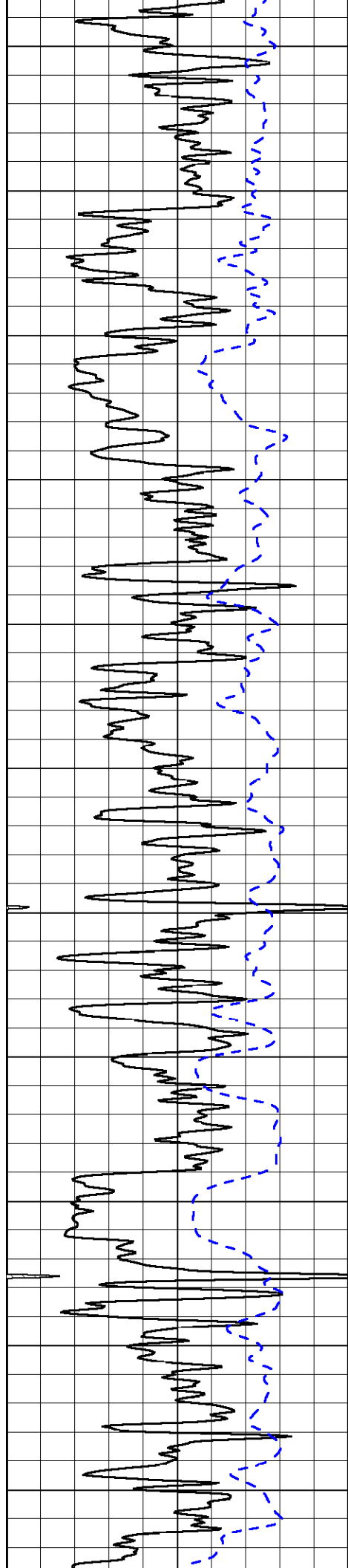


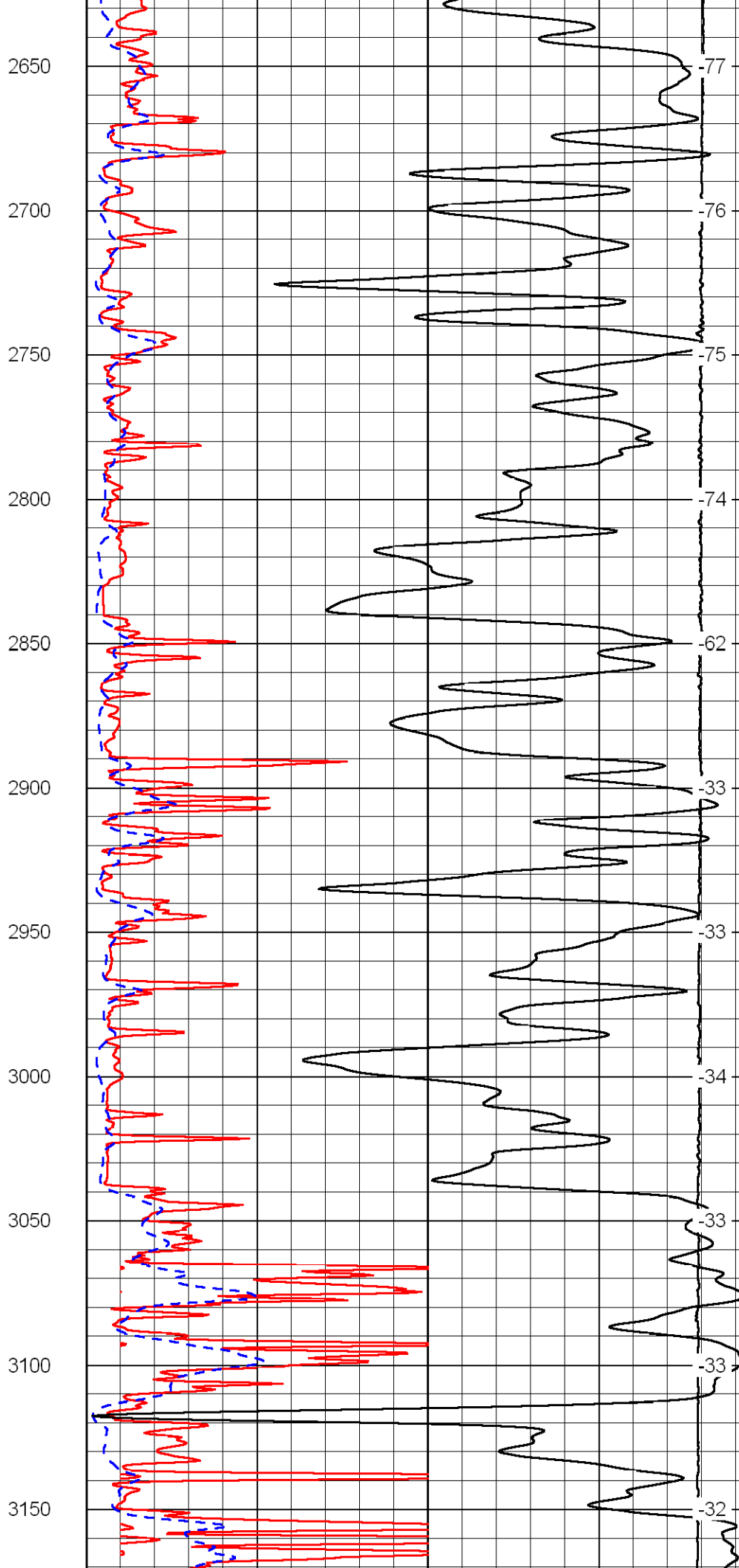
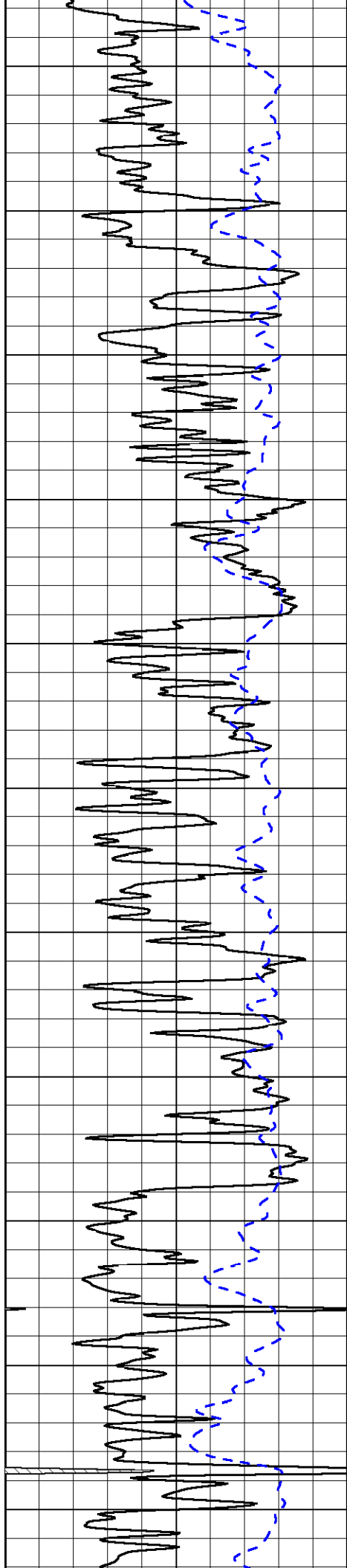


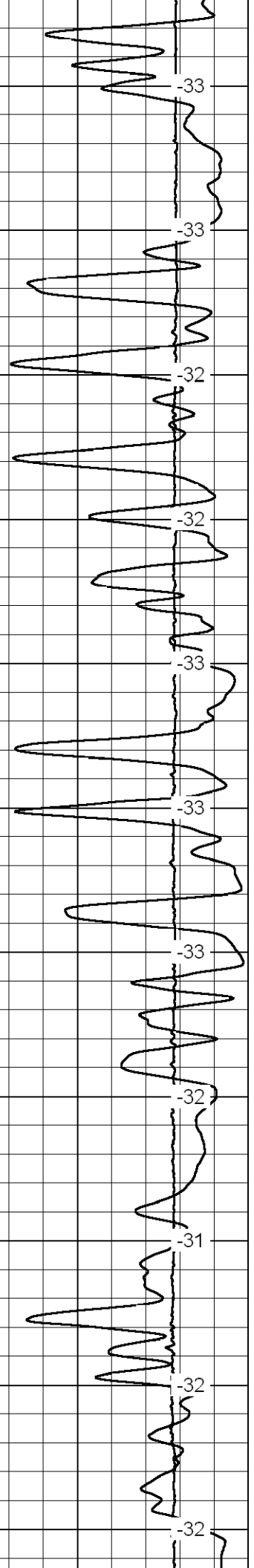
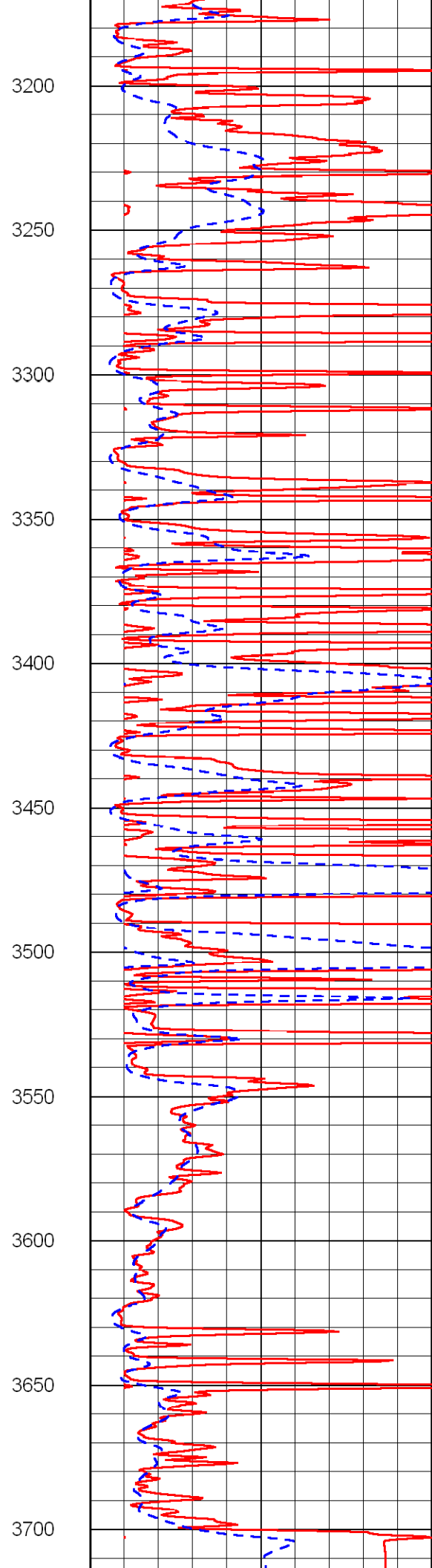
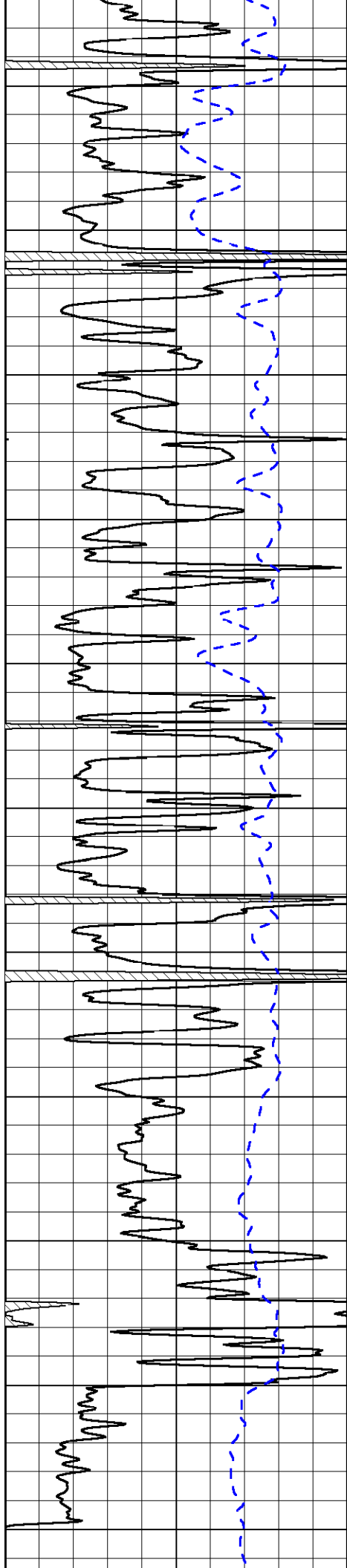
1000  
1050  
1100  
1150  
1200  
1250  
1300  
1350  
1400  
1450  
1500

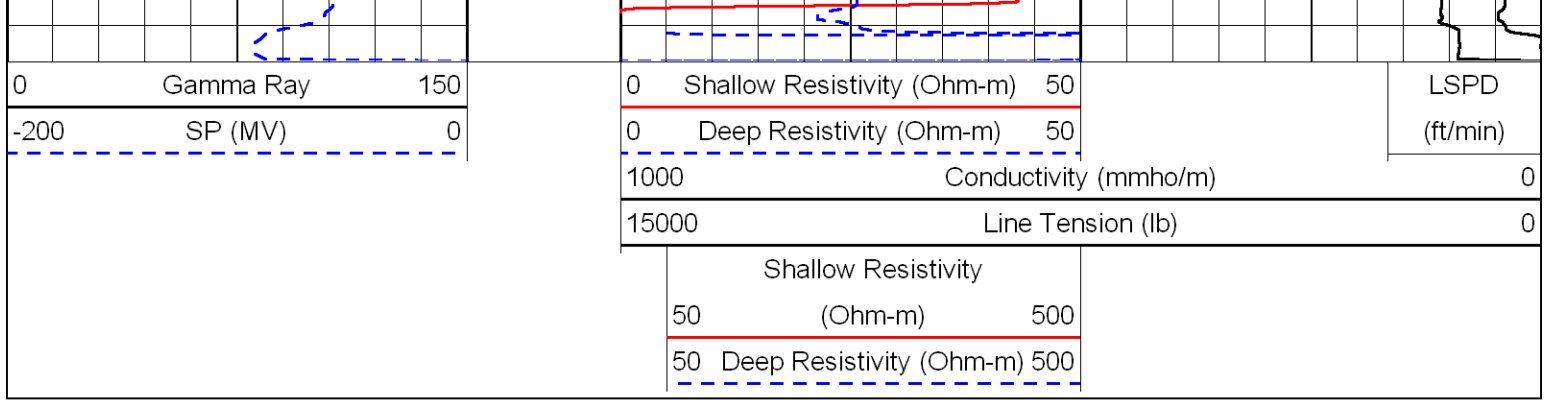




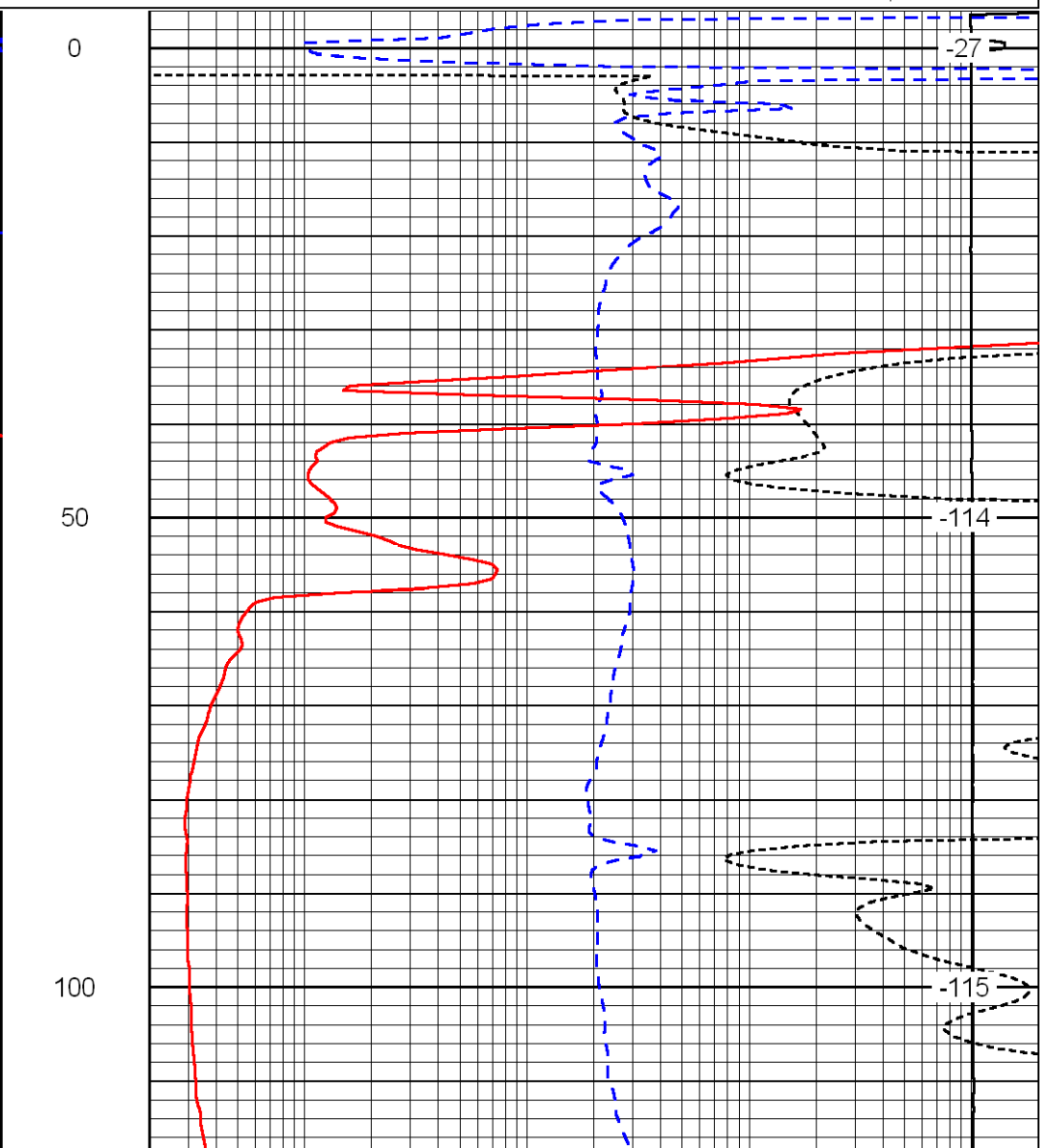
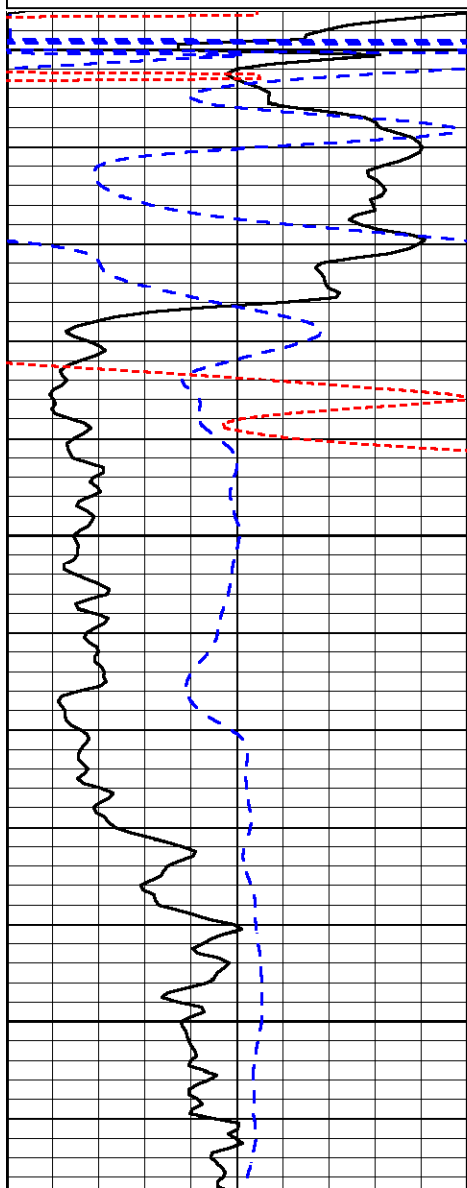
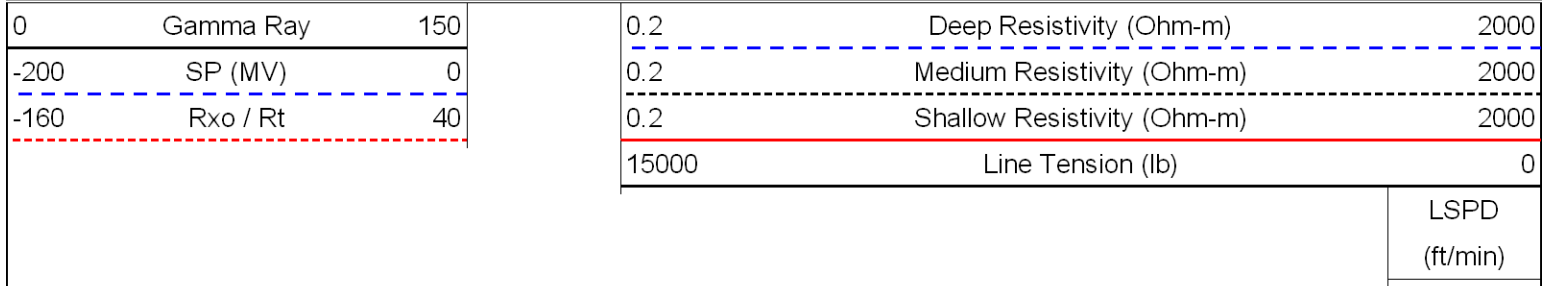


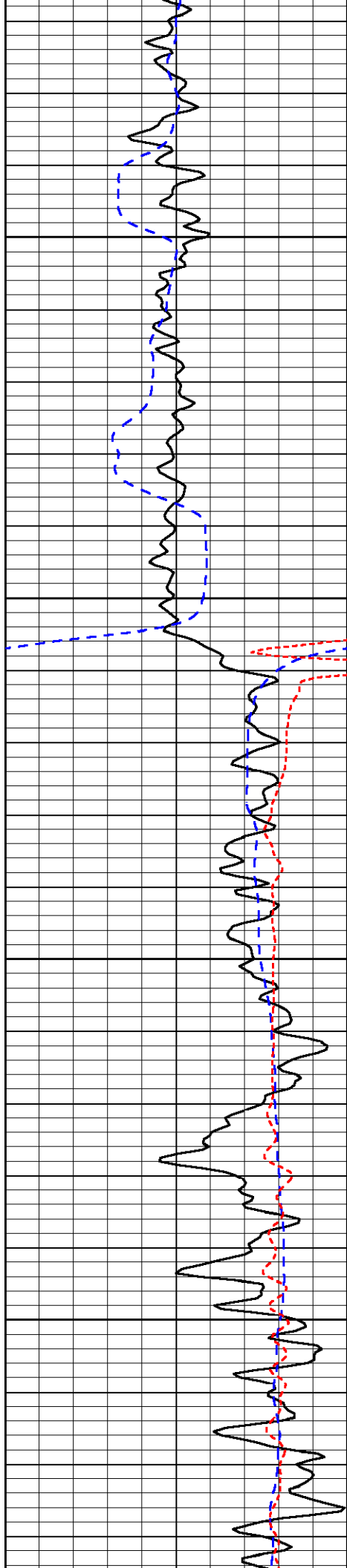






Database File: c:\warrior\data\murfin\_collins no. 1-28\murfin062509hd.db  
 Dataset Pathname: dil/murf2in  
 Presentation Format: dil  
 Dataset Creation: Thu Jun 25 16:06:00 2009  
 Charted by: Depth in Feet scaled 1:240



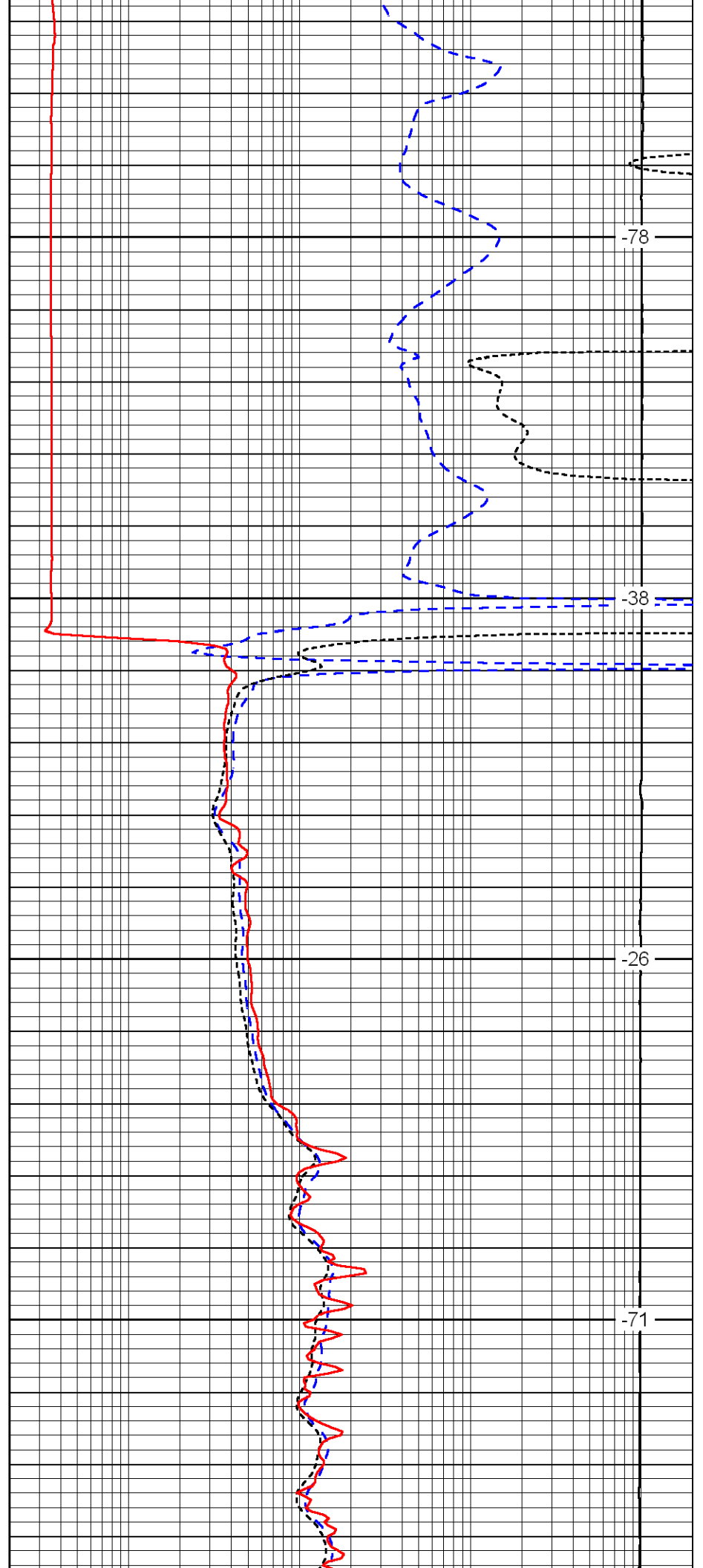


150

200

250

300

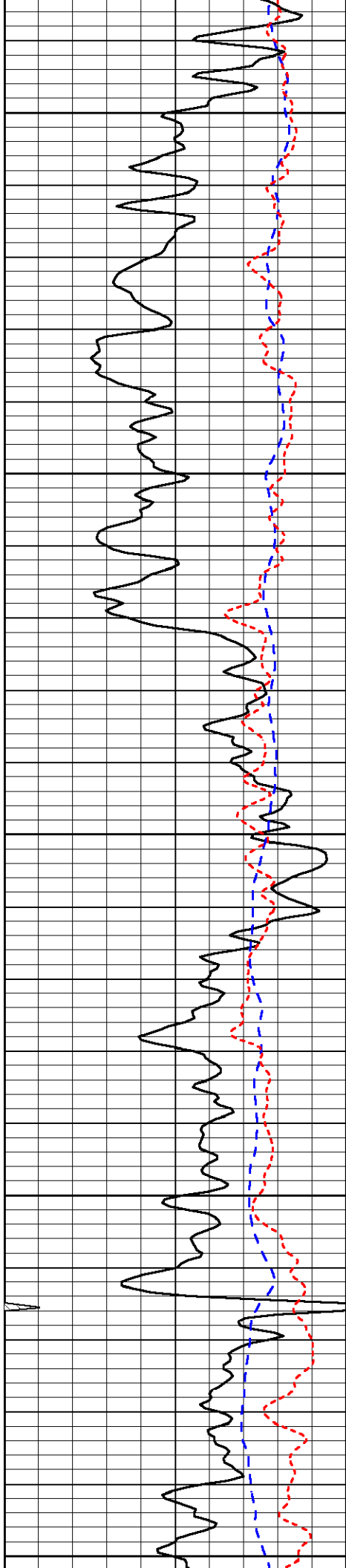


-78

-38

-26

-71



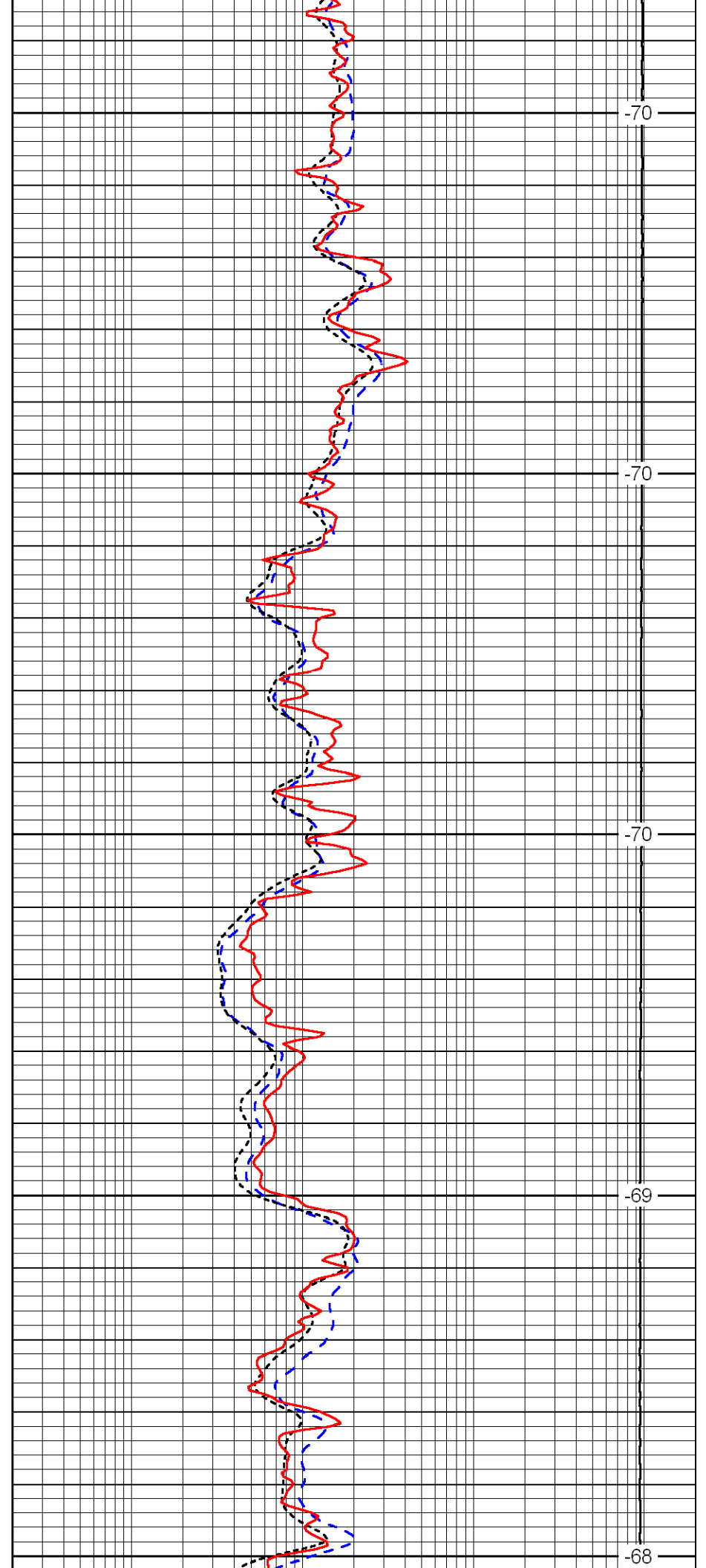
350

400

450

500

550



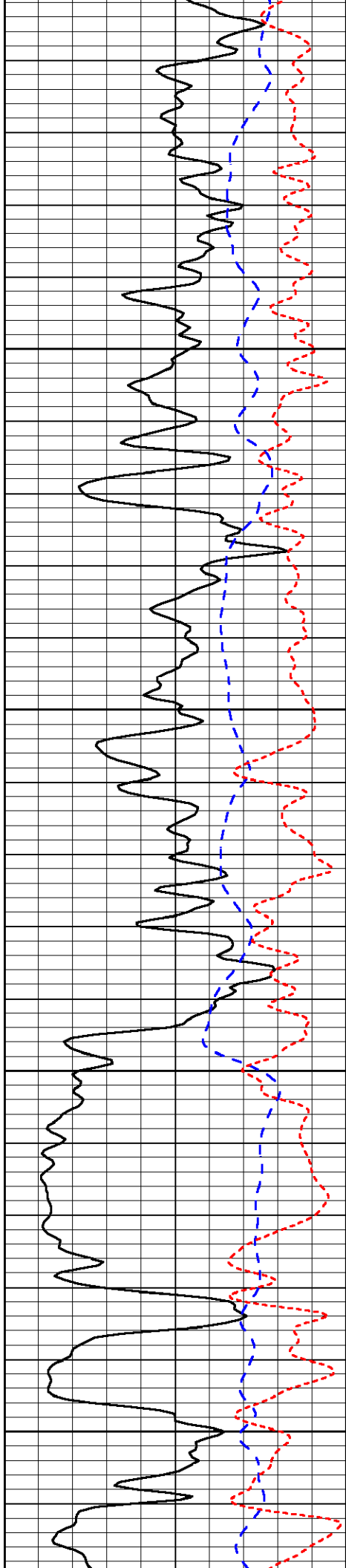
-70

-70

-70

-69

-68

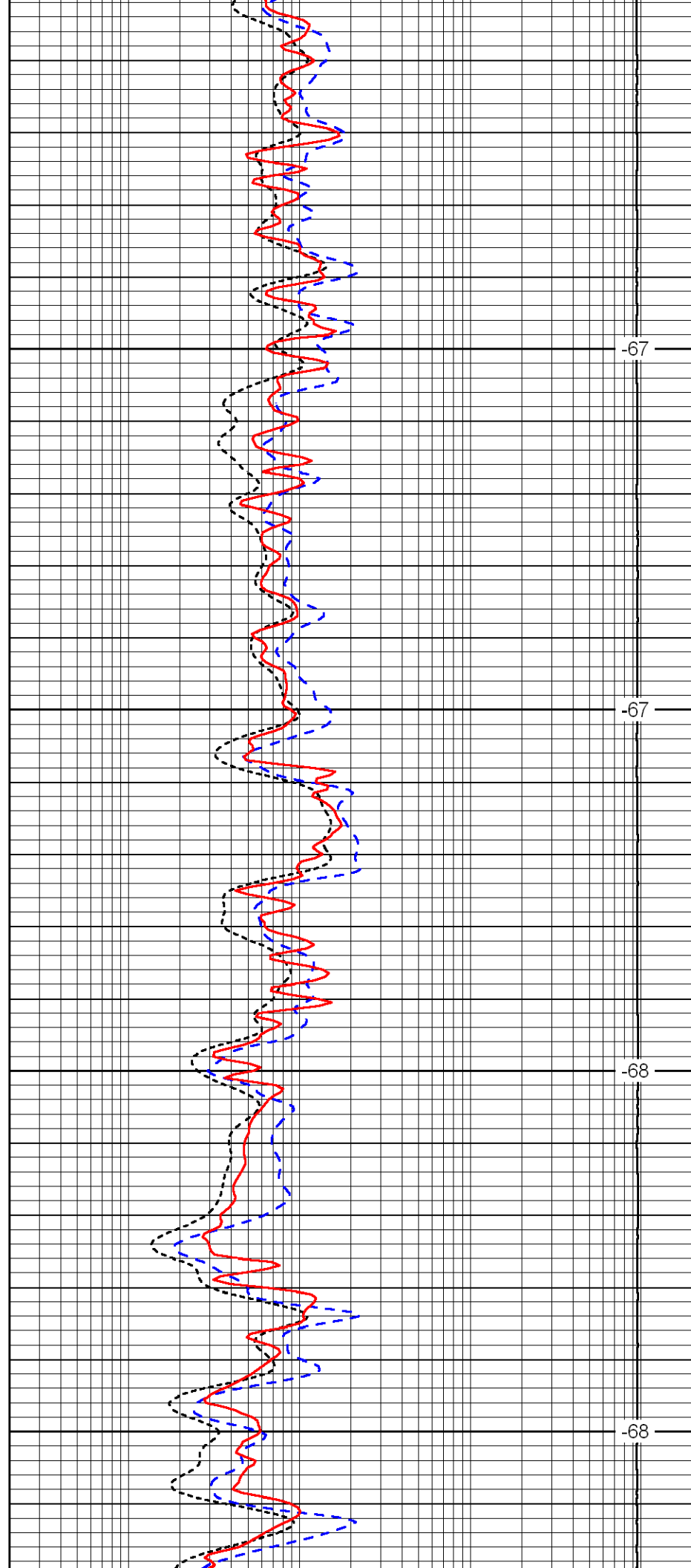


600

650

700

750

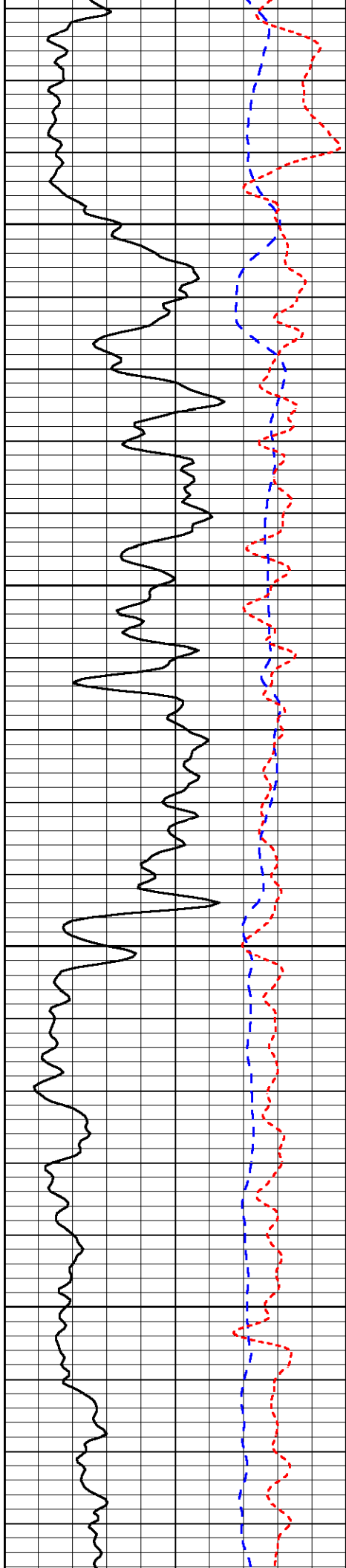


-67

-67

-68

-68

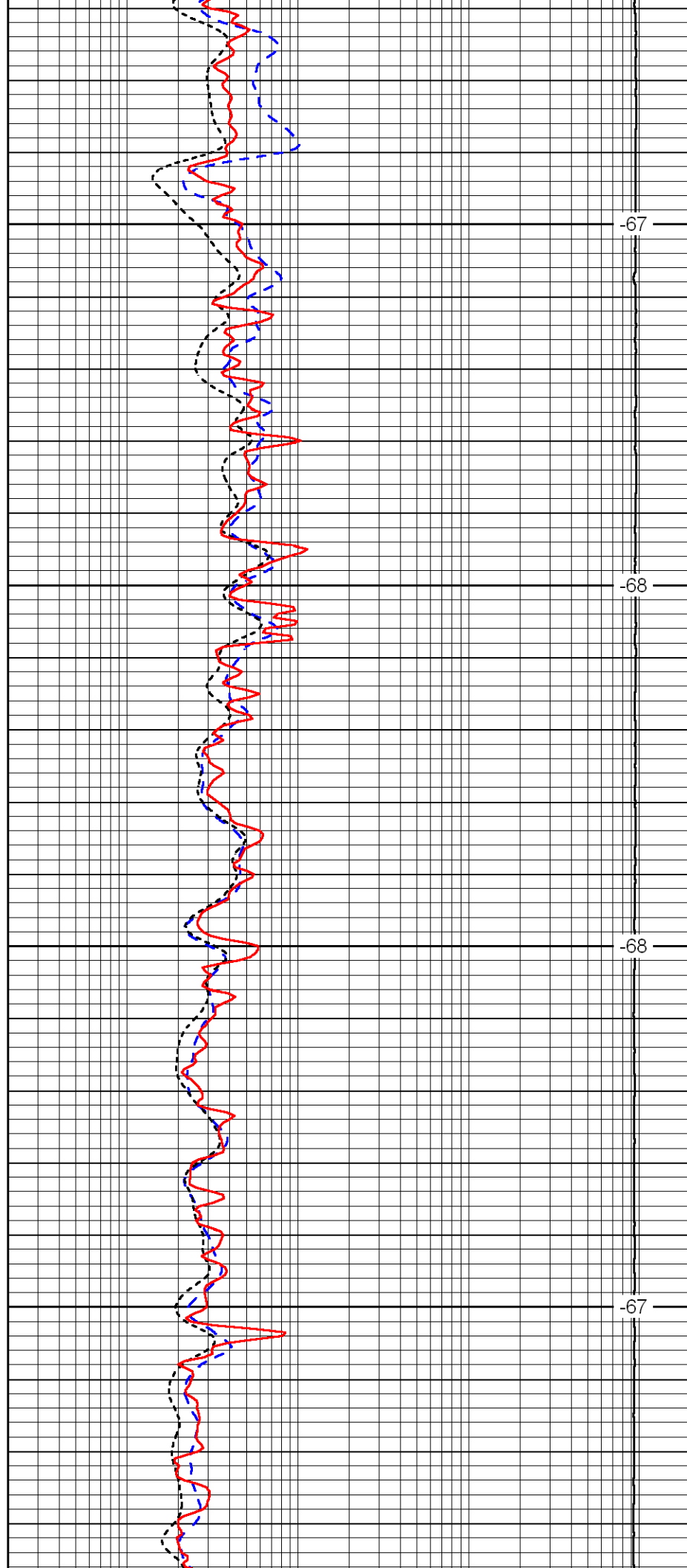


800

850

900

950

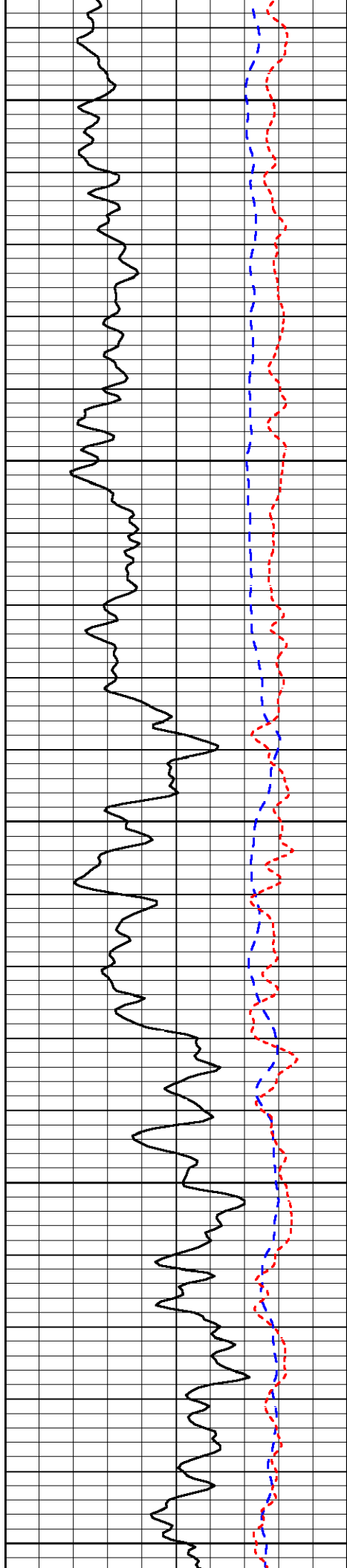


-67

-68

-68

-67



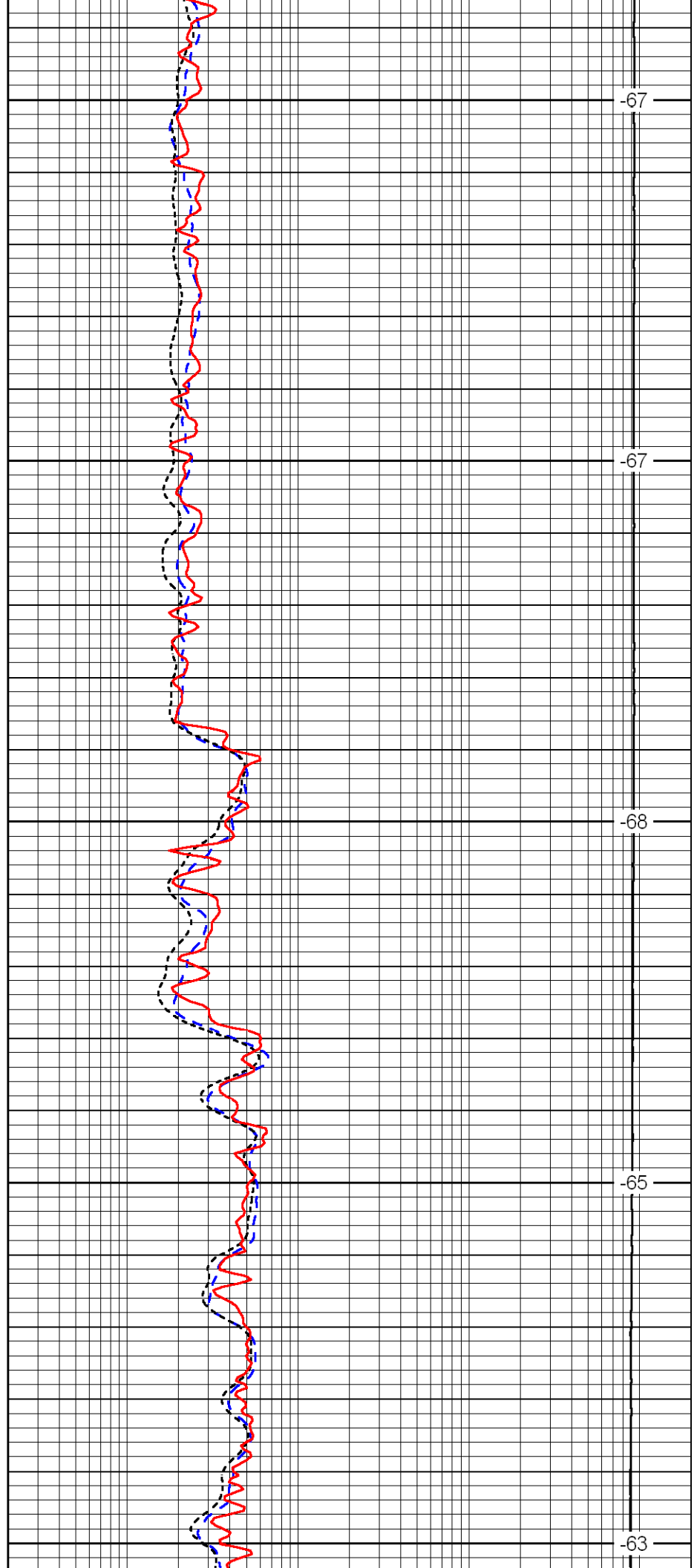
1000

1050

1100

1150

1200



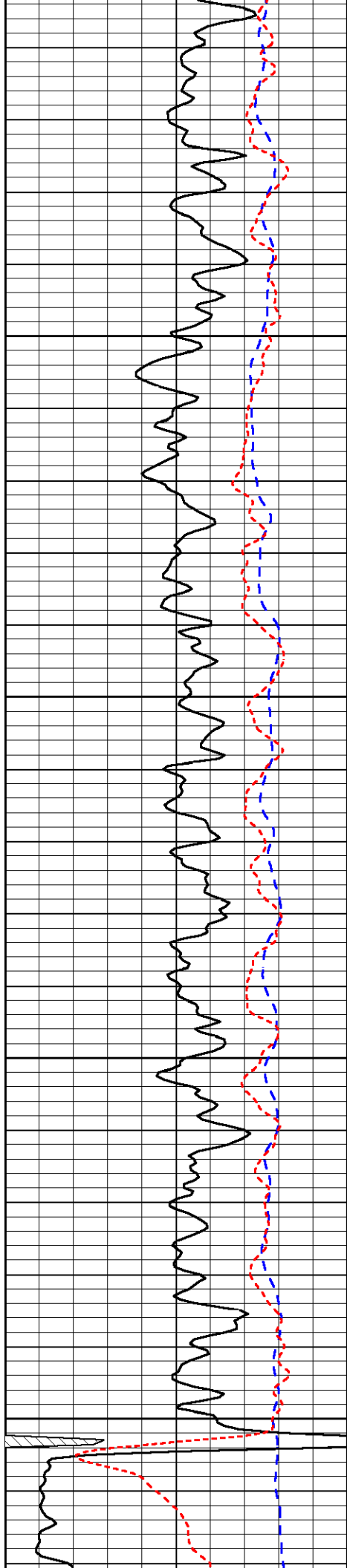
-67

-67

-68

-65

-63

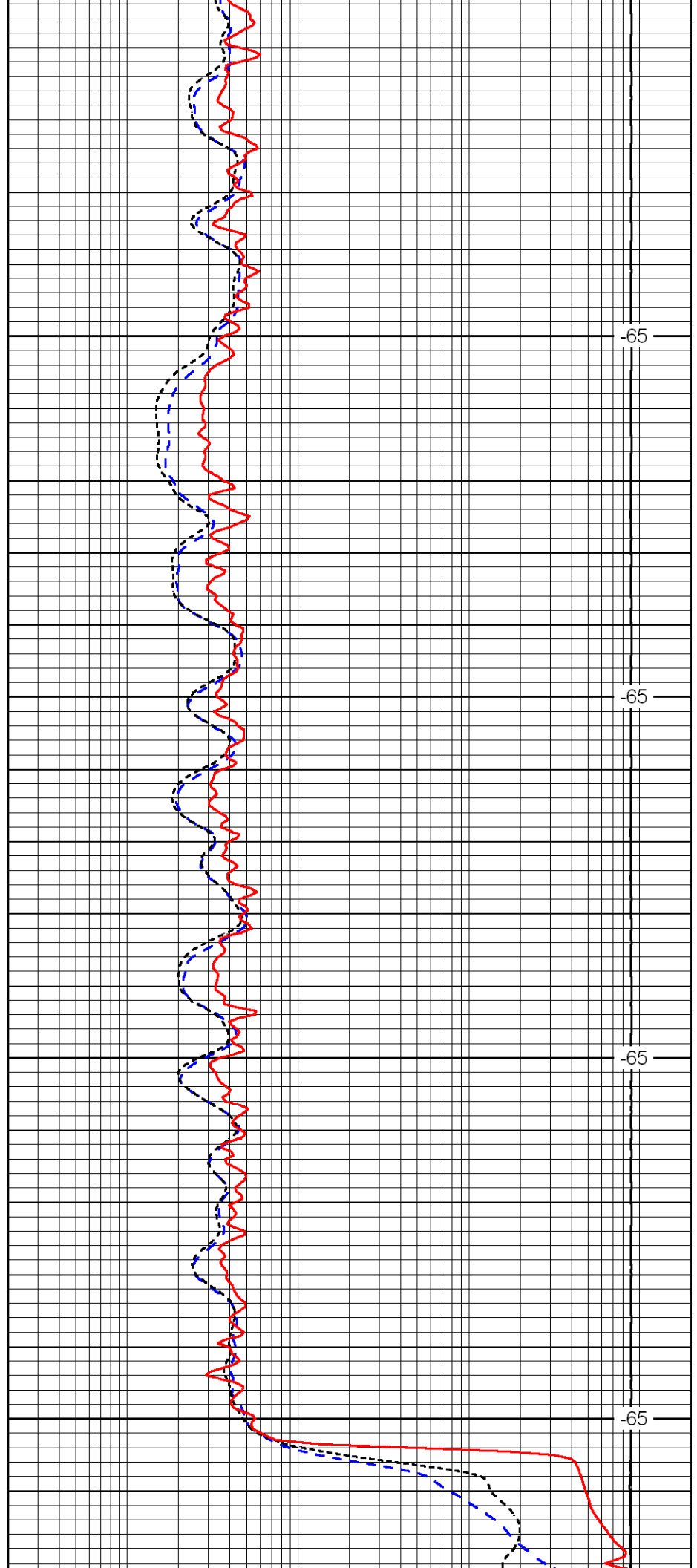


1250

1300

1350

1400

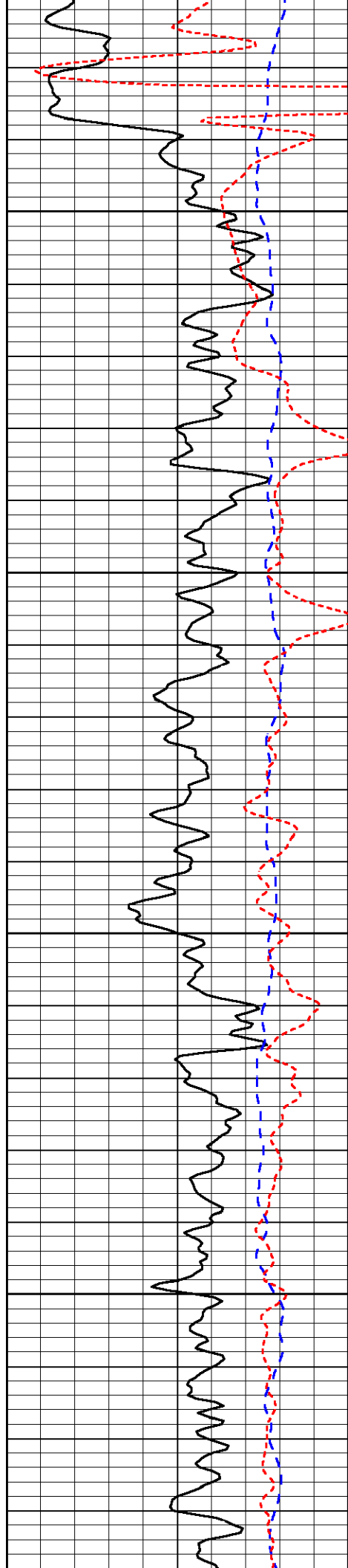


-65

-65

-65

-65

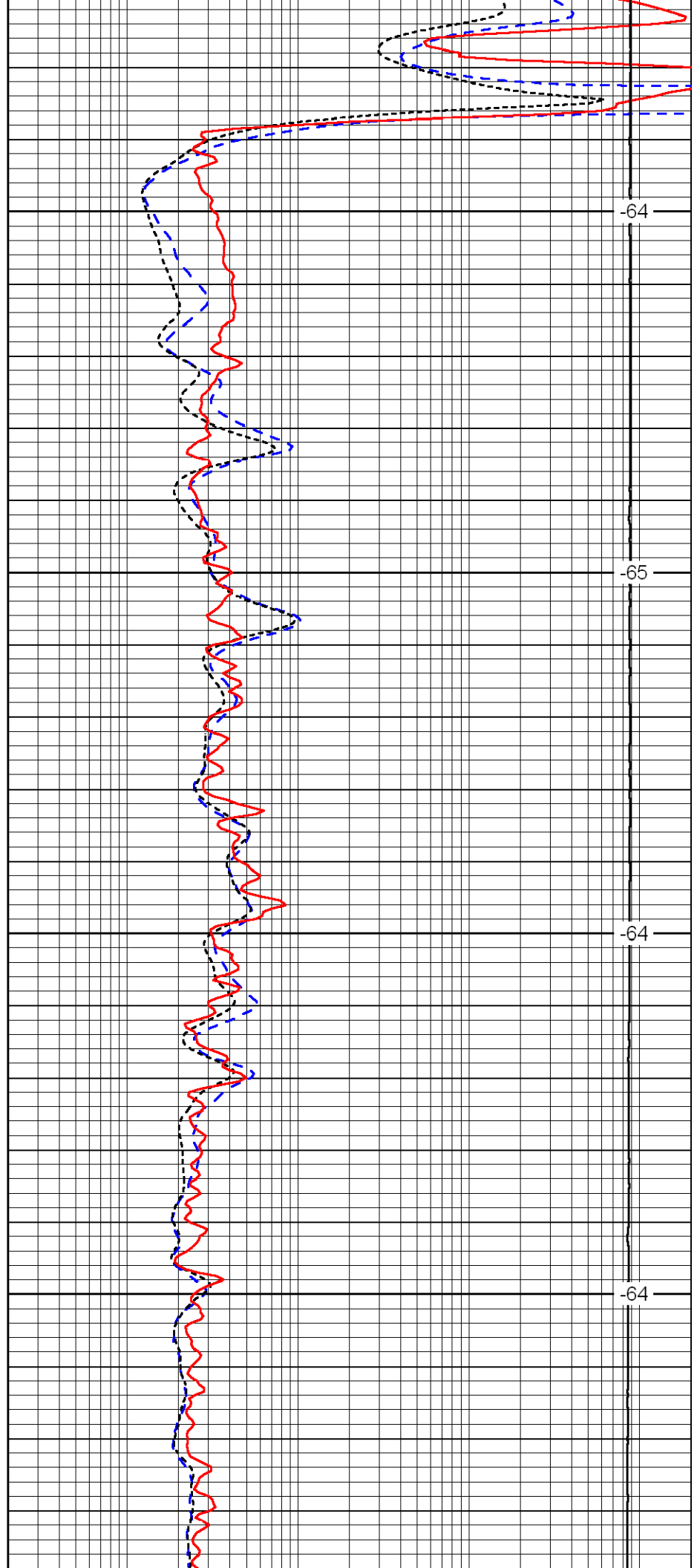


1450

1500

1550

1600

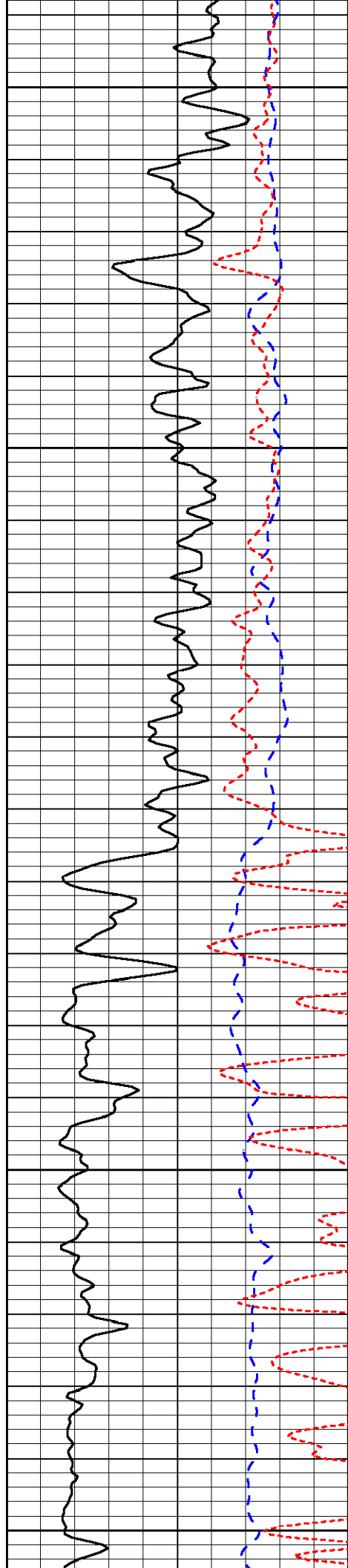


-64

-65

-64

-64



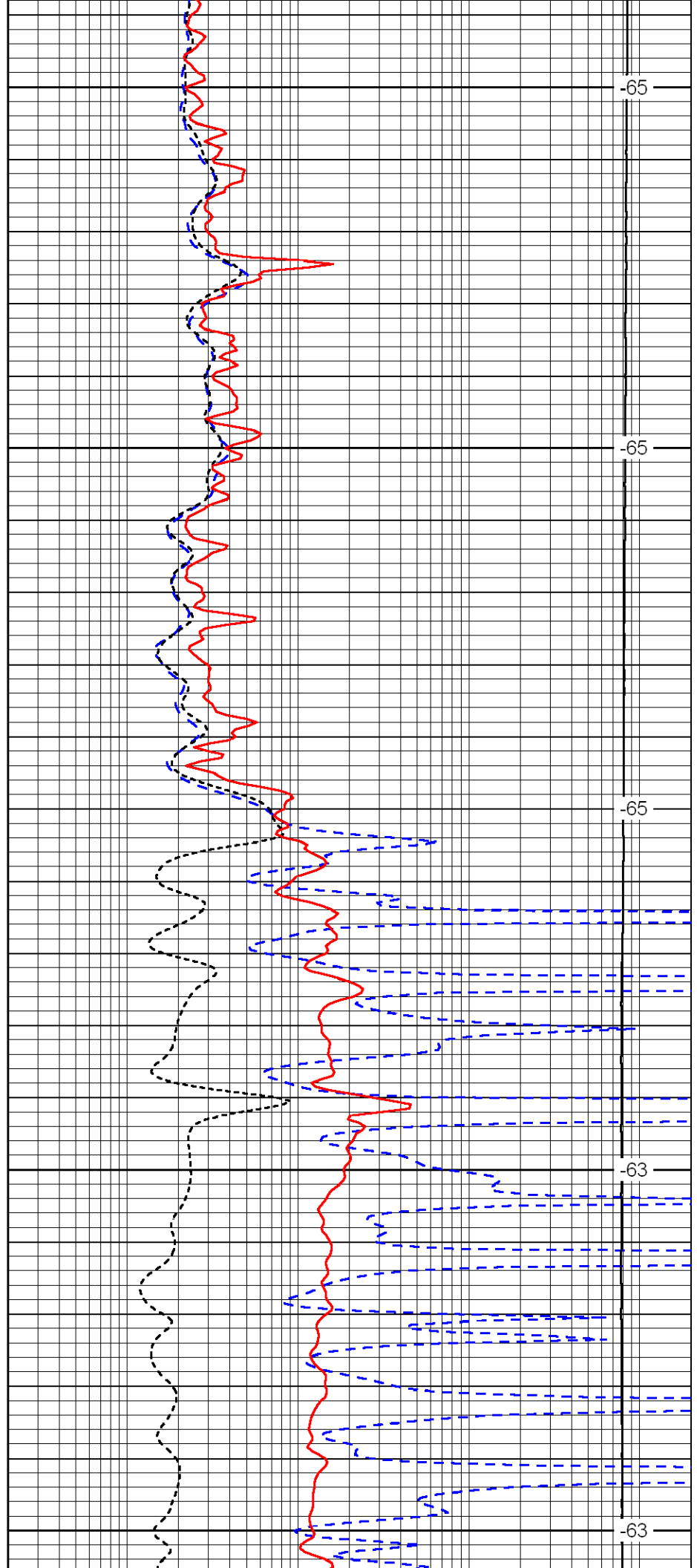
1650

1700

1750

1800

1850



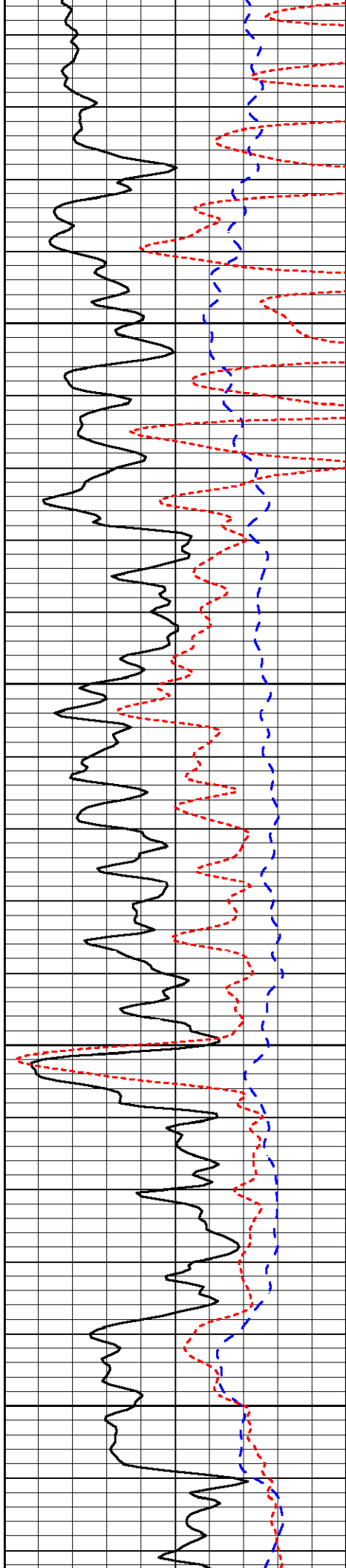
-65

-65

-65

-63

-63

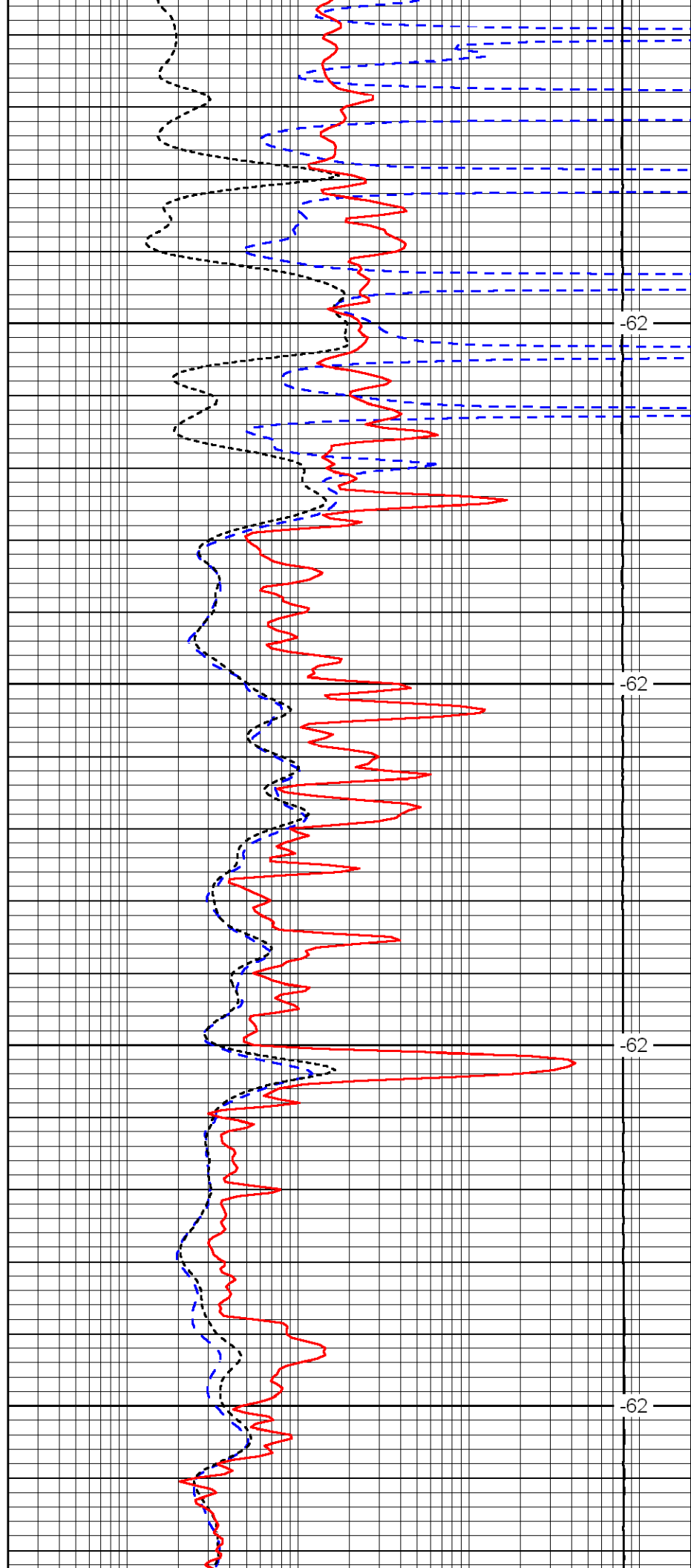


1900

1950

2000

2050

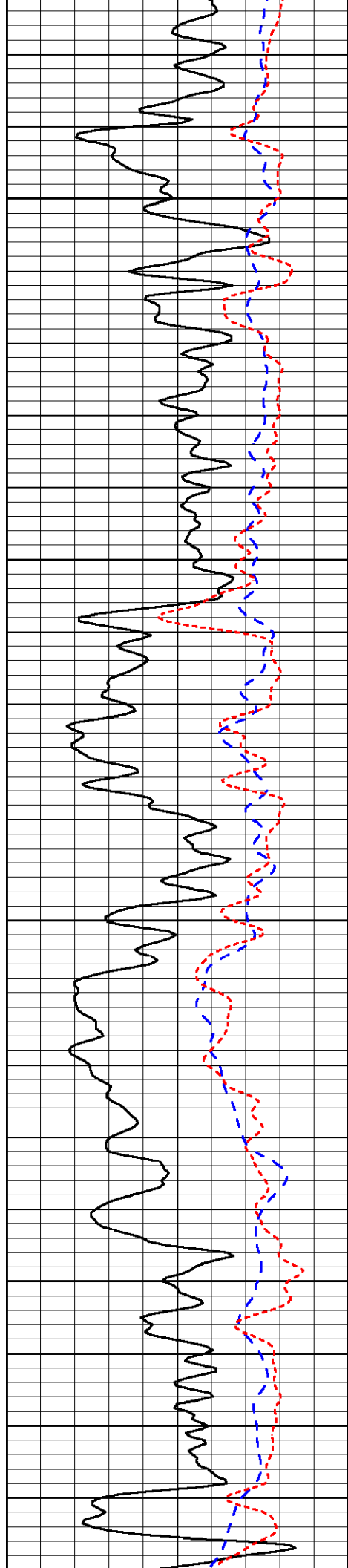


-62

-62

-62

-62

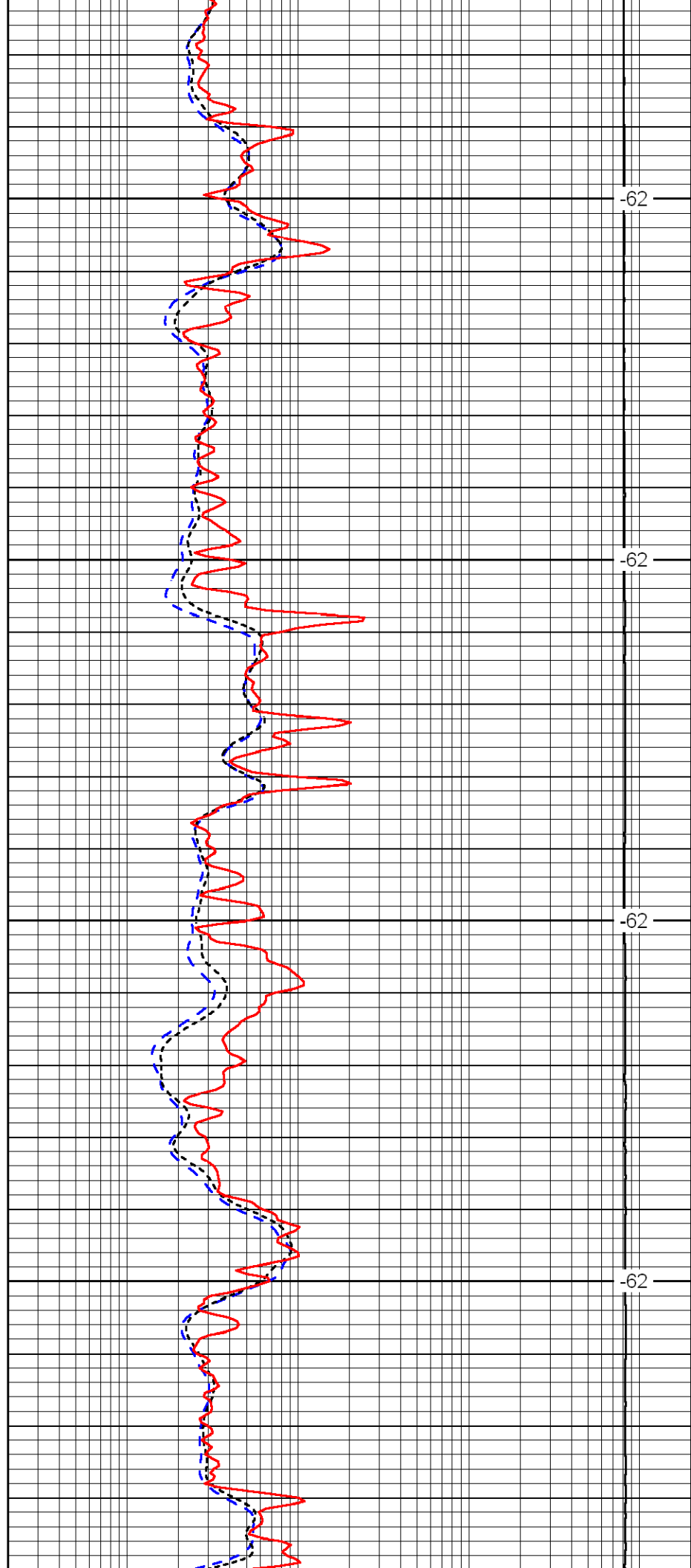


2100

2150

2200

2250

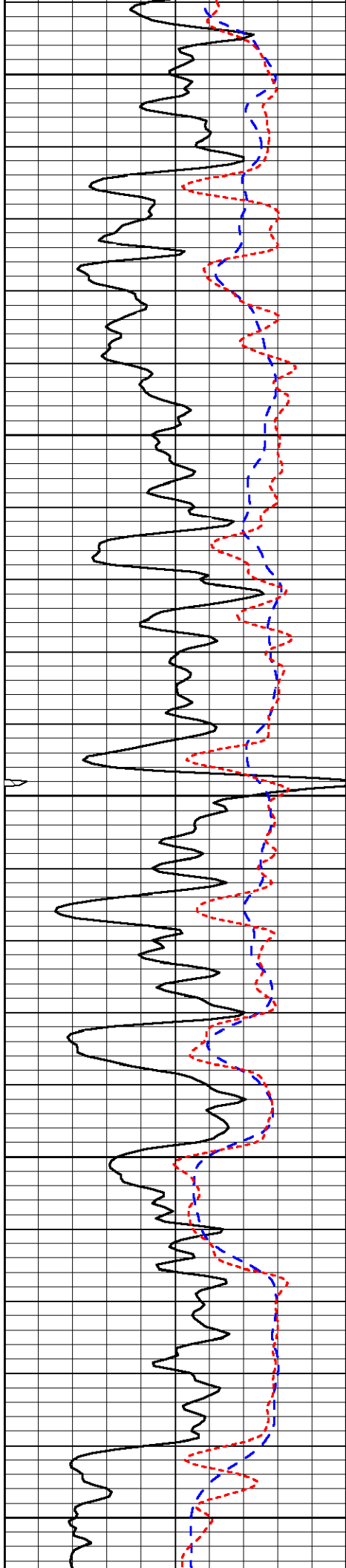


-62

-62

-62

-62



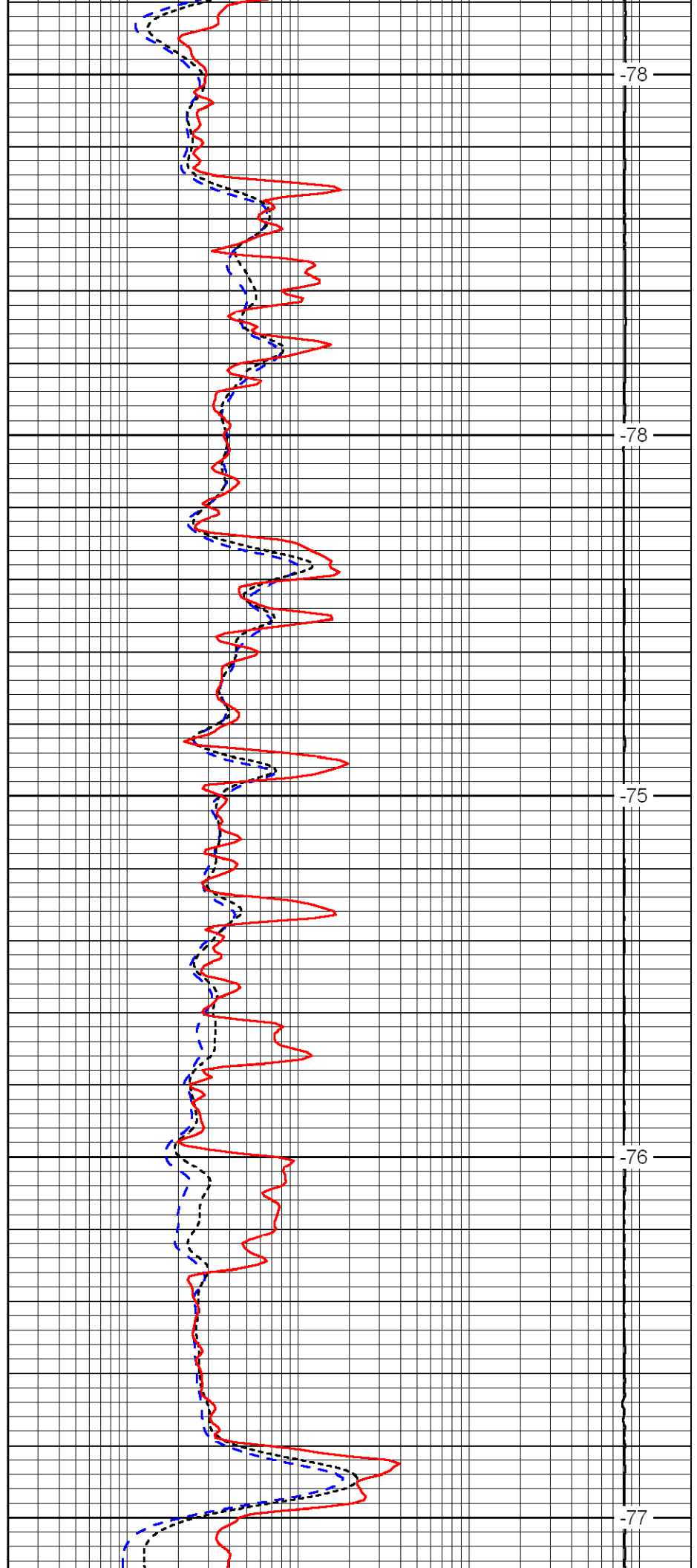
2300

2350

2400

2450

2500



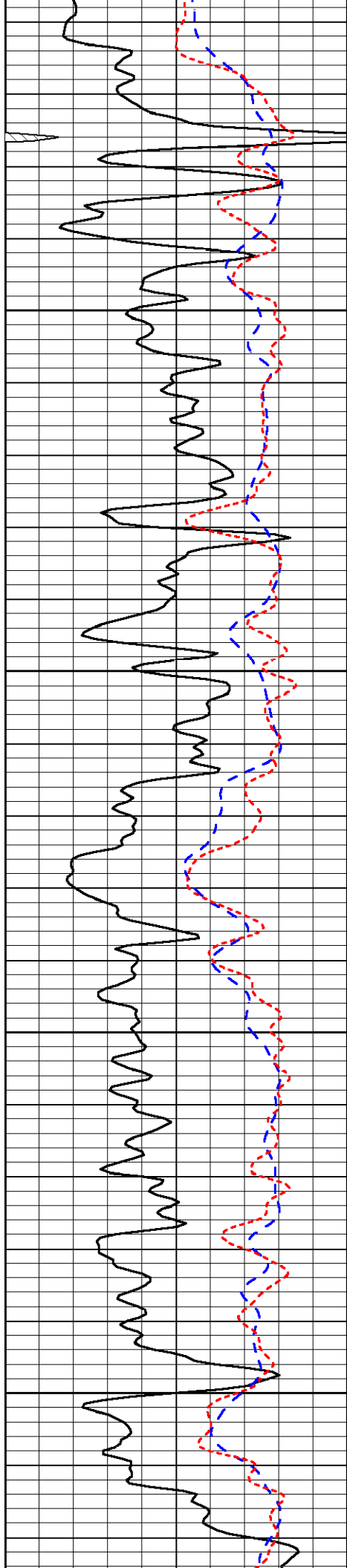
-78

-78

-75

-76

-77

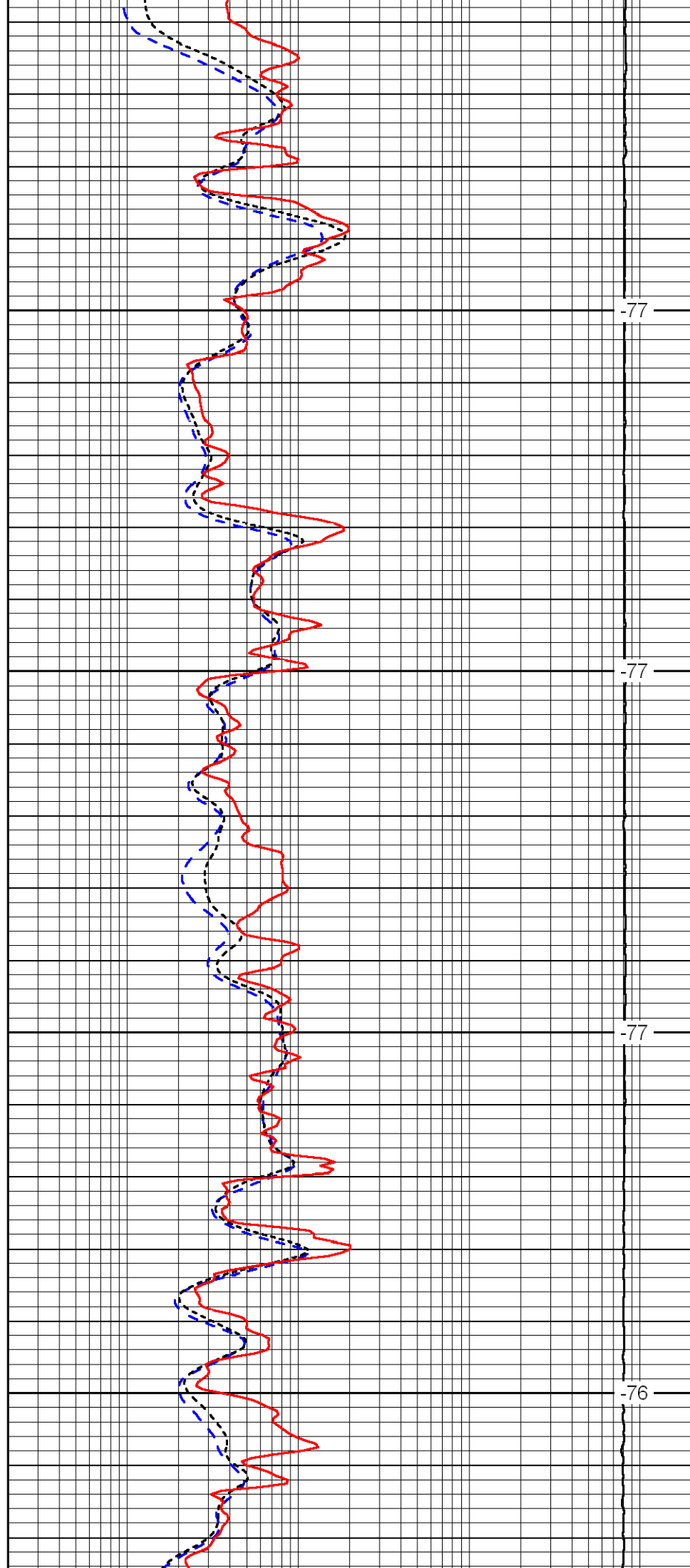


2550

2600

2650

2700

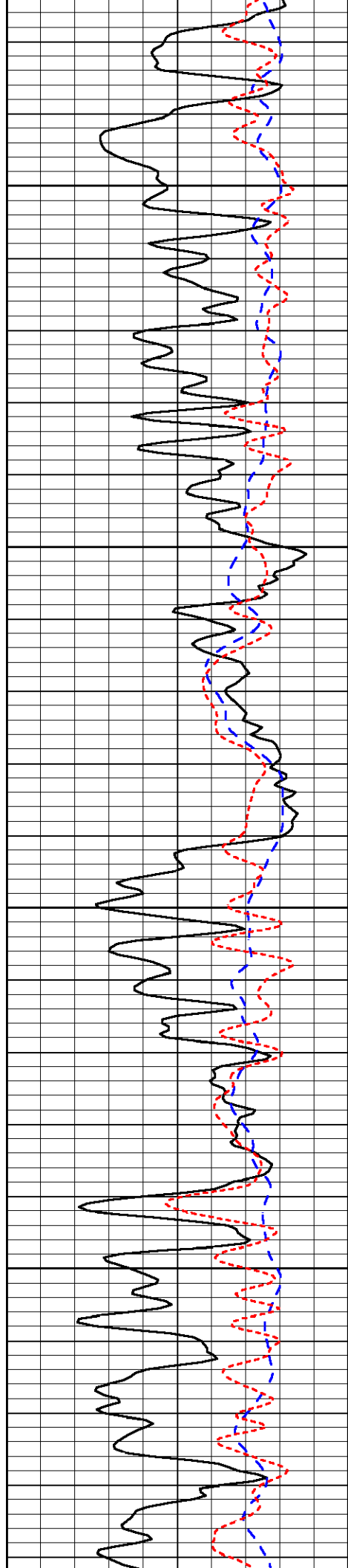


-77

-77

-77

-76

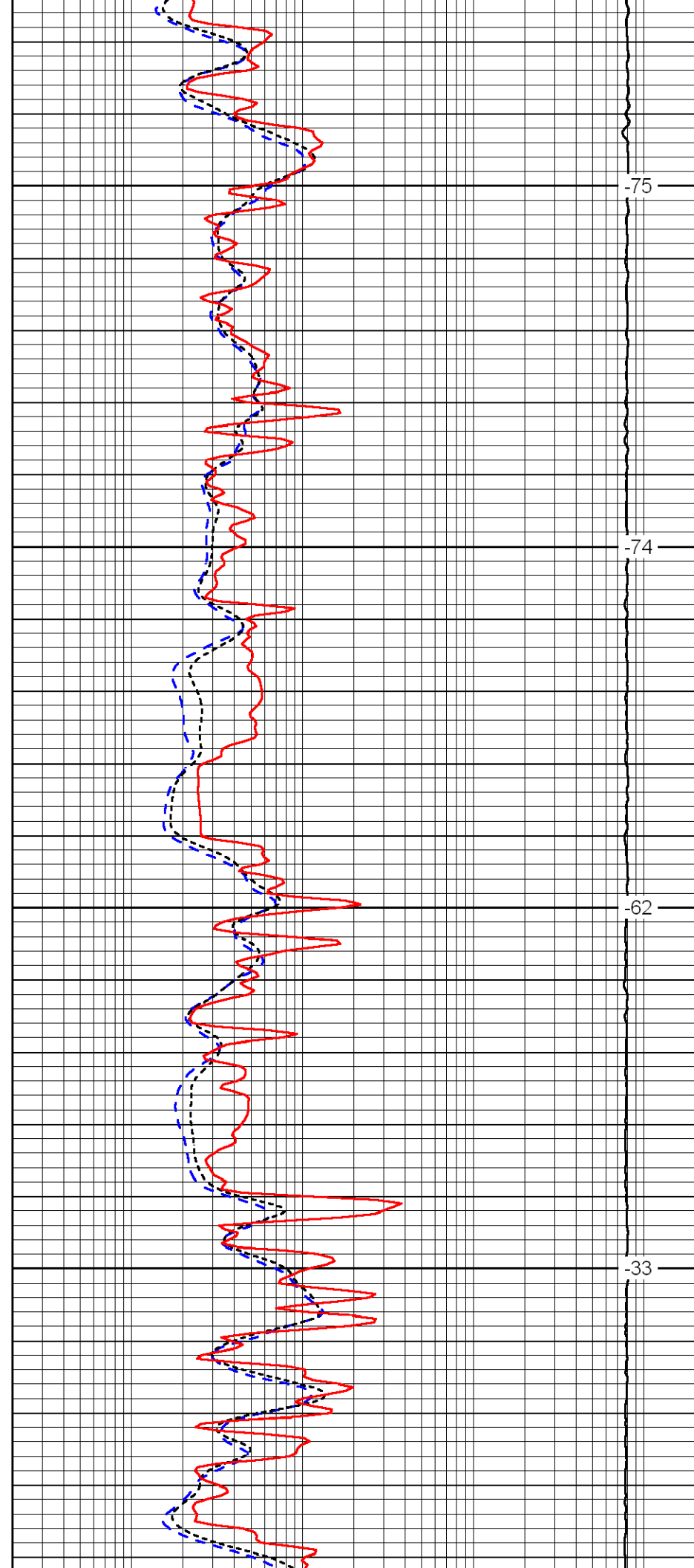


2750

2800

2850

2900

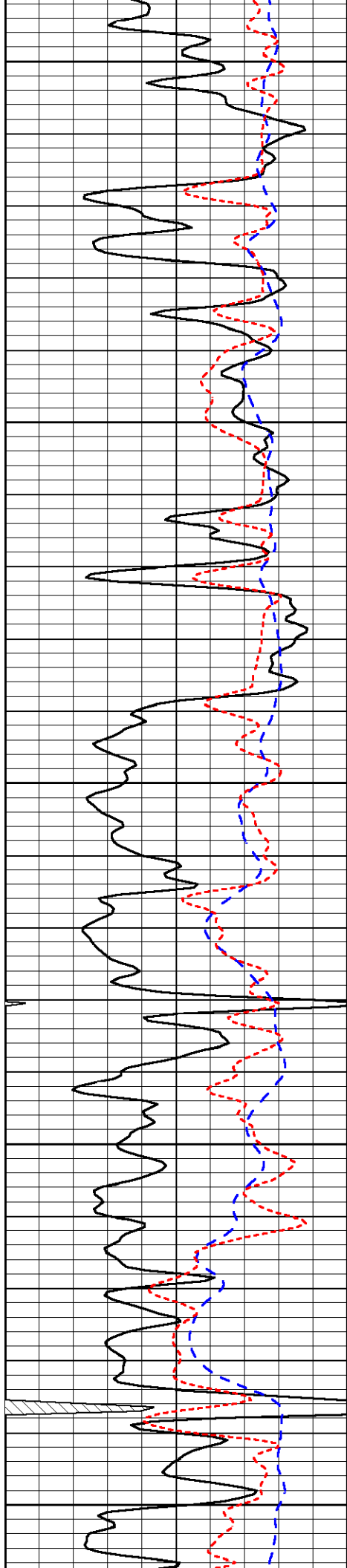


-75

-74

-62

-33



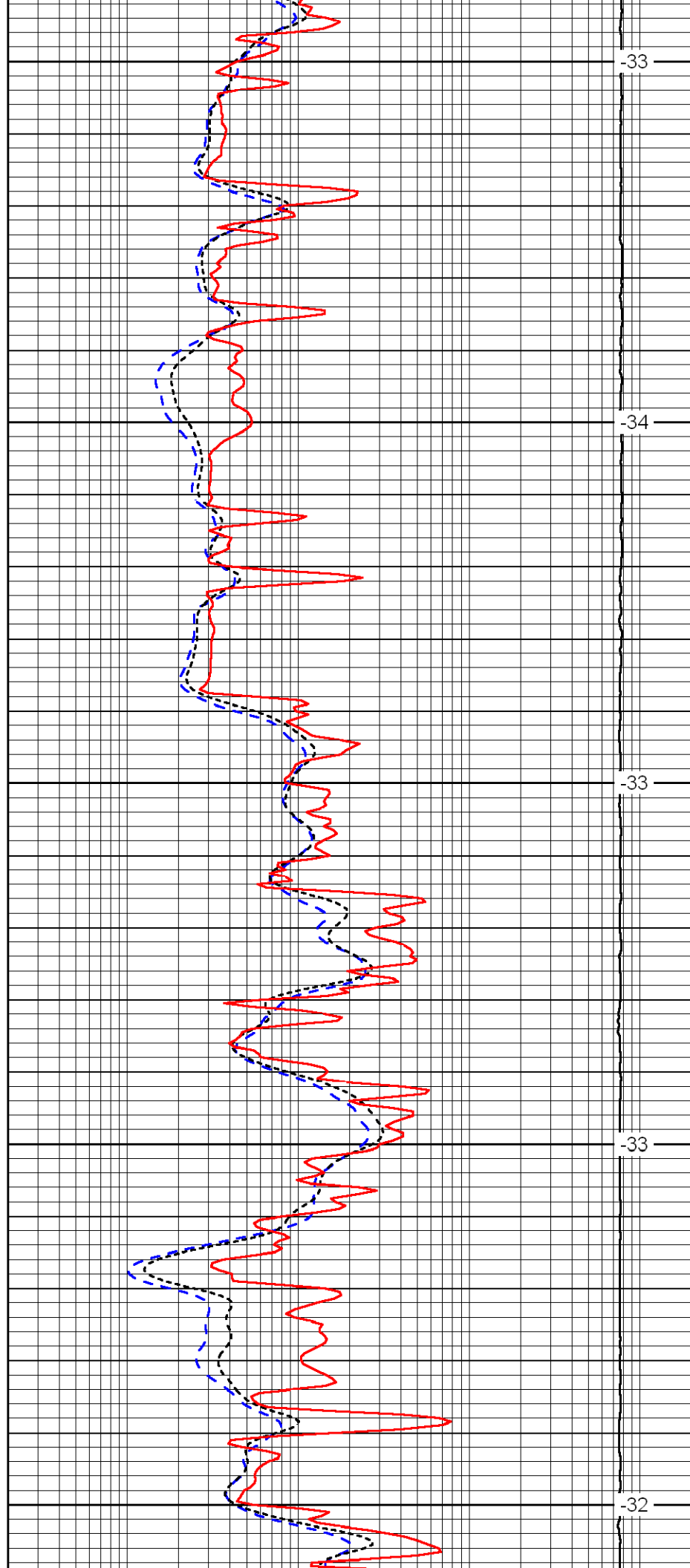
2950

3000

3050

3100

3150



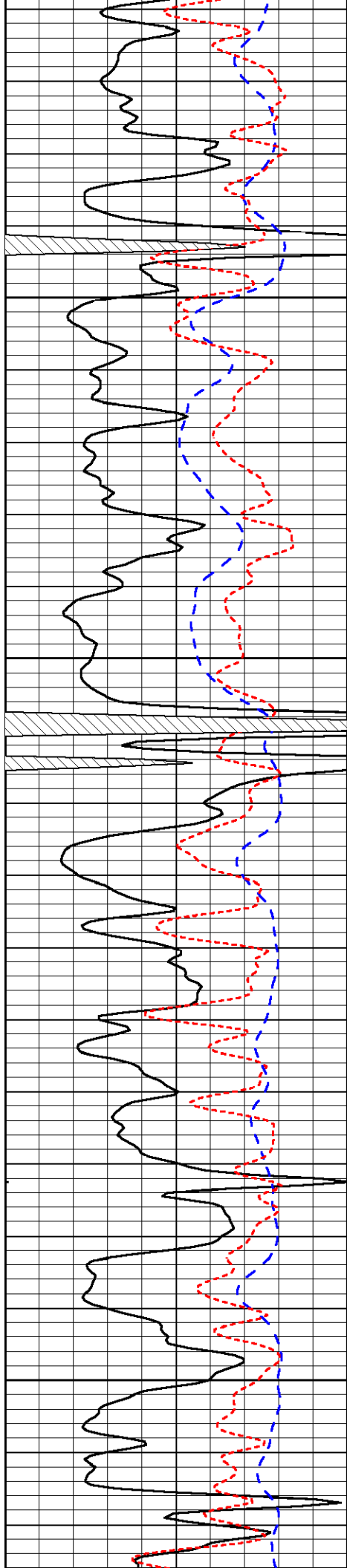
-33

-34

-33

-33

-32

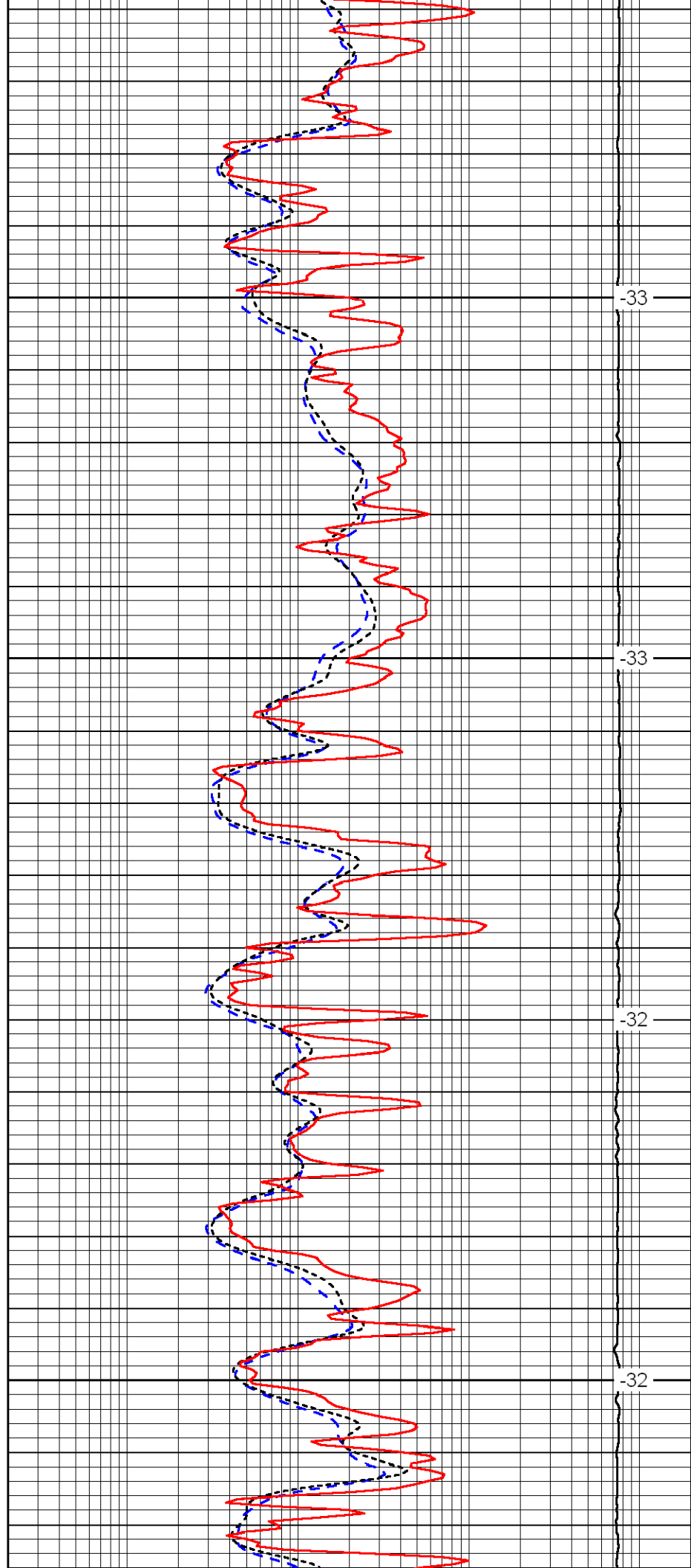


3200

3250

3300

3350

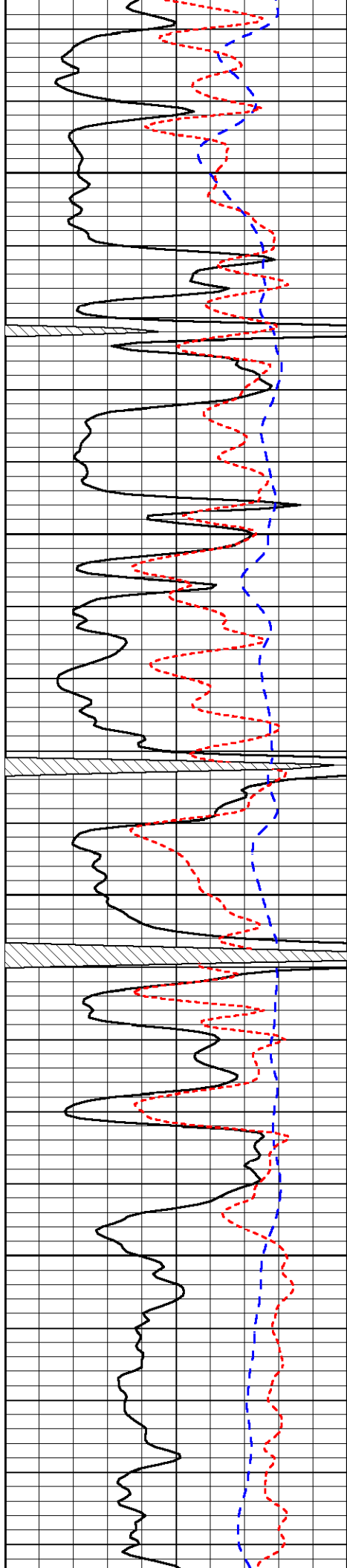


-33

-33

-32

-32

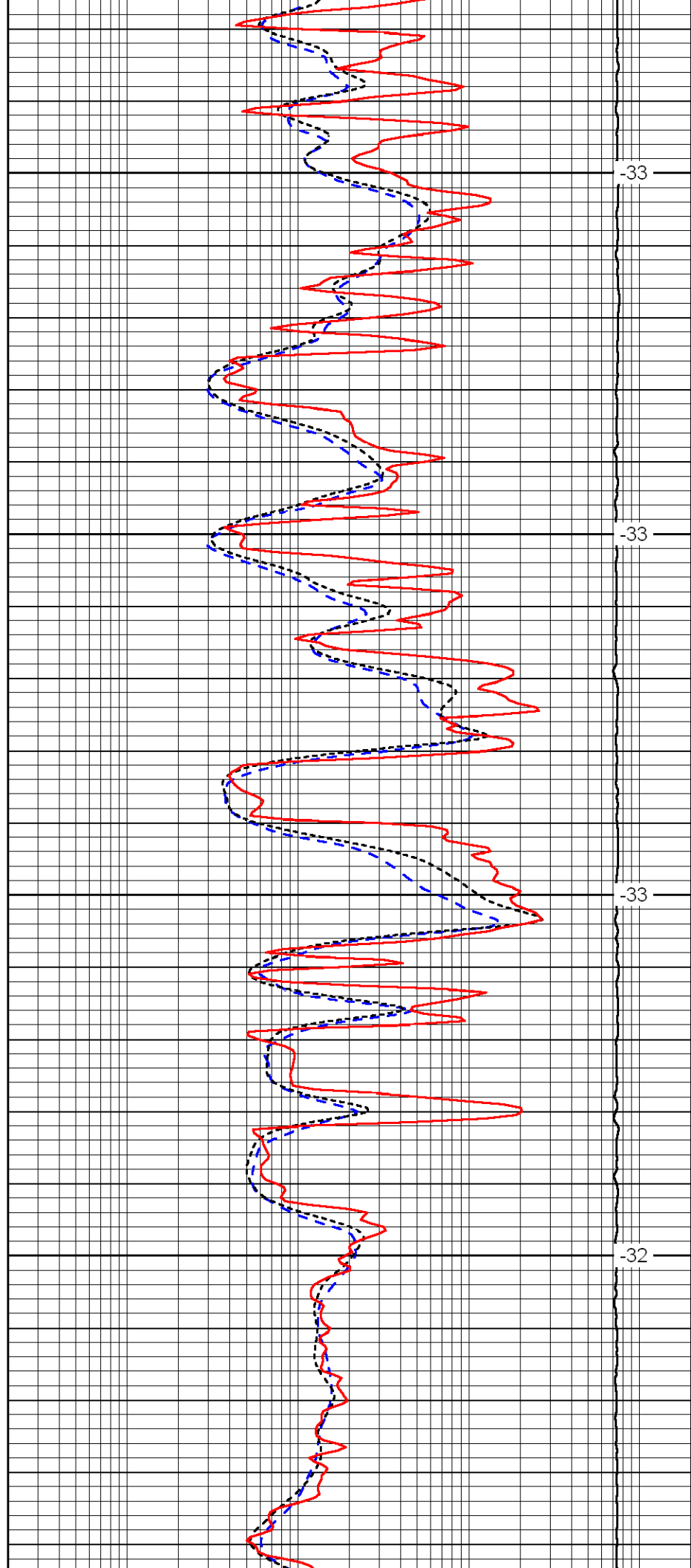


3400

3450

3500

3550

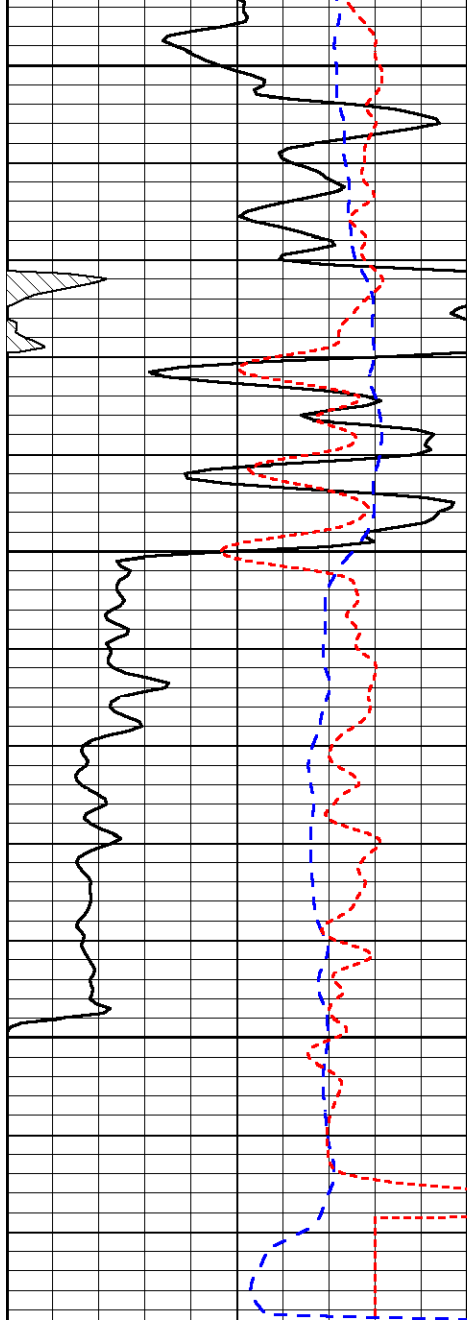


33

33

33

32

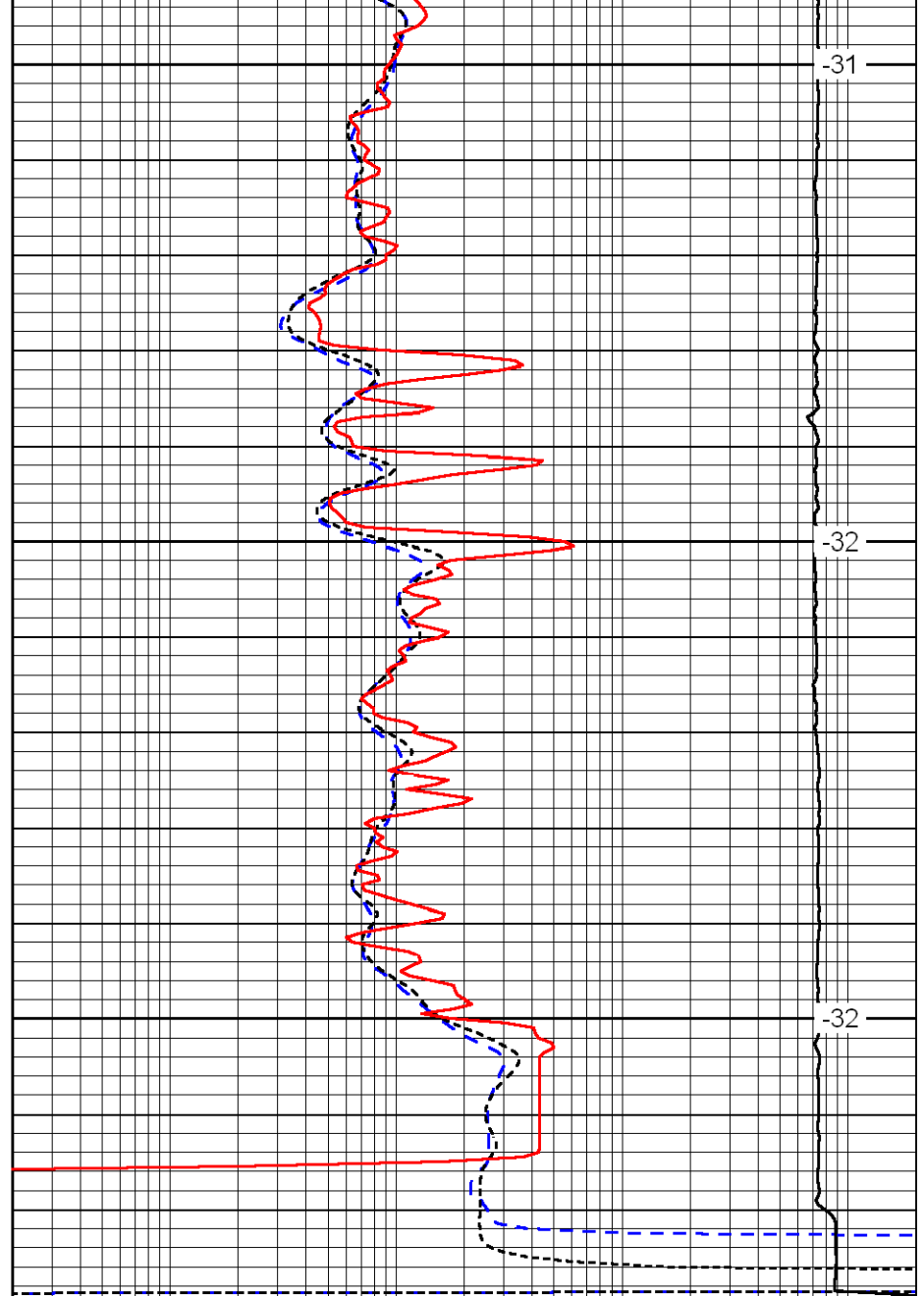


0	Gamma Ray	150
-200	SP (MV)	0
-160	Rxo / Rt	40

3600

3650

3700



0.2	Deep Resistivity (Ohm-m)	2000
0.2	Medium Resistivity (Ohm-m)	2000
0.2	Shallow Resistivity (Ohm-m)	2000
15000	Line Tension (lb)	0

-31

-32

-32

LSPD  
(ft/min)