



Dual Compensated
Porosity Log

DIGITAL LOG (785) 625-3858

API No. 15-163-23,808-00-00

Company **Murfin Drilling Co., Inc**
 Well **Collins No. 1-28**
 Field **Wildcat**
 County **Rooks** State **Kansas**

Location **330' FSL & 2200' FEL**

Sec: **28** Twp: **10 S** Rge: **18 W**

Other Services
DIL
MEL/BHCS

Permanent Datum **Ground Level** Elevation **2060**
 Log Measured From **Kelly Bushing** 5 Ft. Above Perm. Datum
 Drilling Measured From **Kelly Bushing**

K.B. 2065
 D.F. 2060
 G.L. 2060

Date **6/25/09**

Run Number **One**

Type Log **CNL / CDL**

Depth Driller **3720**

Depth Logger **3719**

Bottom Logged Interval **3698**

Top Logged Interval **2900**

Type Fluid In Hole **Chemical**

Salinity, PPM CL **3,800**

Density **9.4**

Level **Full**

Max. Rec. Temp. F **115**

Operating Rig Time **5 1/2 Hours**

Equipment -- Location **4 Hays**

Recorded By **K. Bange**

Witnessed By **Rocky Milford**

Run No	Bit	Borehole Record		Casing Record	
		From	To	From	To
1	12.25	00	207	8.625	24#
2	7.875	207	3720		

<<< Fold Here >>>

All interpretations are opinions based on inferences from electrical or other measurements and we cannot and do not guarantee the accuracy or correctness of any interpretation, and we shall not, except in the case of gross or willful negligence on our part, be liable or responsible for any loss, costs, damages, or expenses incurred or sustained by anyone resulting from any interpretation made by any of our officers, agents or employees. These interpretations are also subject to our general terms and conditions set out in our current Price Schedule.

Comments

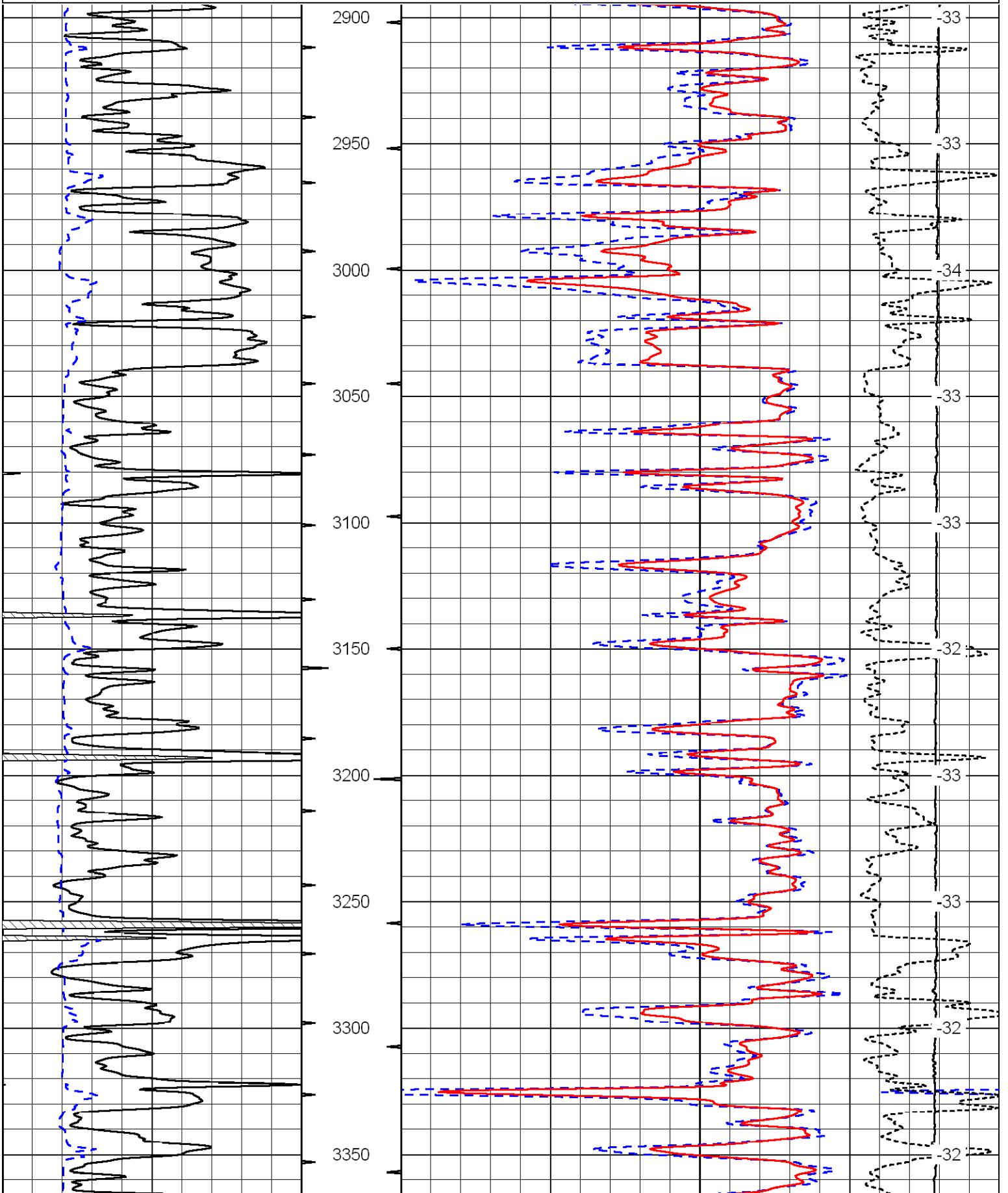
Thank you for using Log-Tech, Inc.
(785) 625-3858

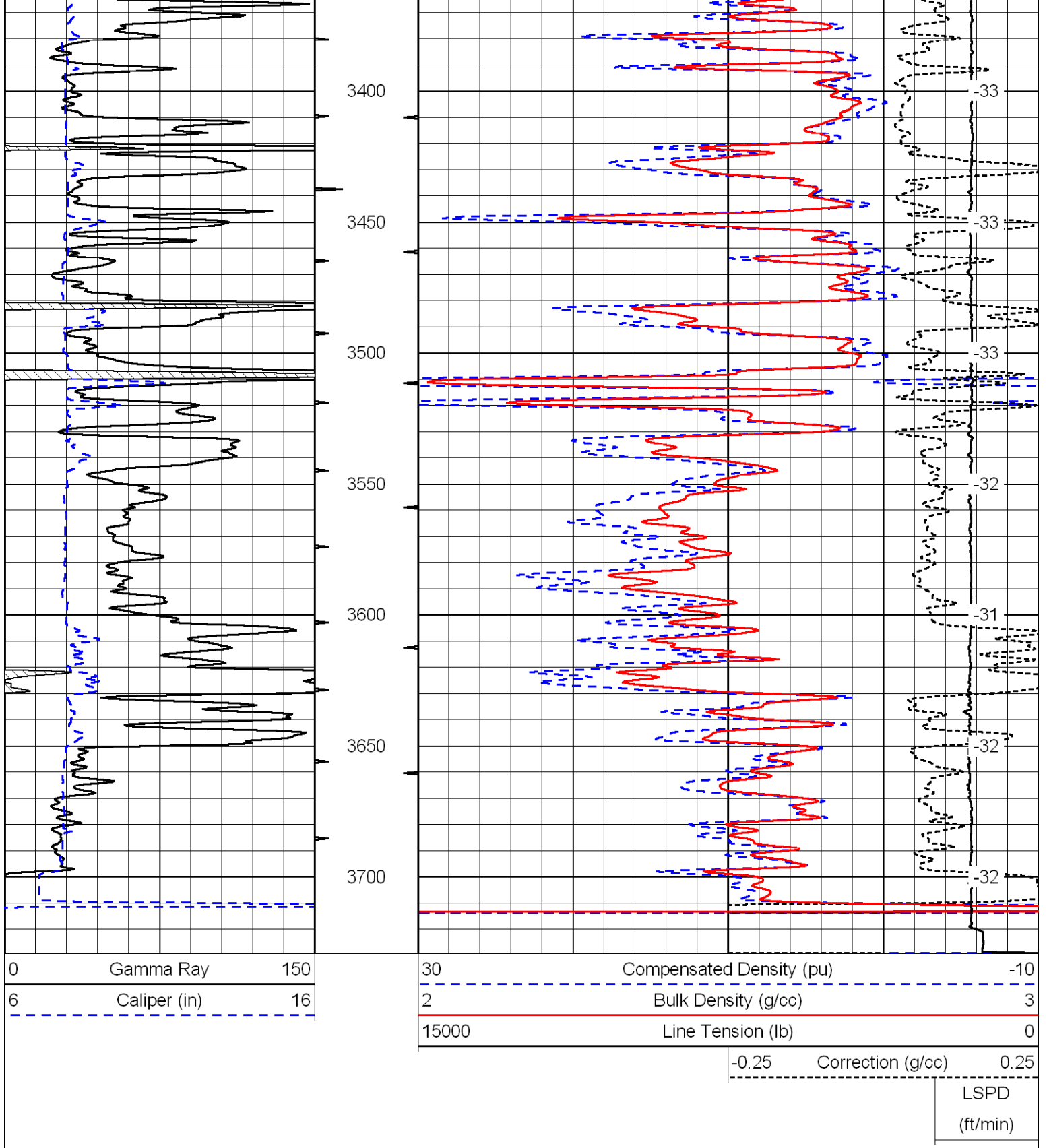
Hays, 18 N to cc rd, 1 1/2 W to 16 rd, 1/2 S, 1/2 W, 1/2 S into

Database File: c:\warrior\data\murfin_collins no. 1-28\murfin062509hd.db
 Dataset Pathname: dil\murf2in
 Presentation Format: cdl
 Dataset Creation: Thu Jun 25 16:06:00 2009
 Charted by: Depth in Feet scaled 1:600

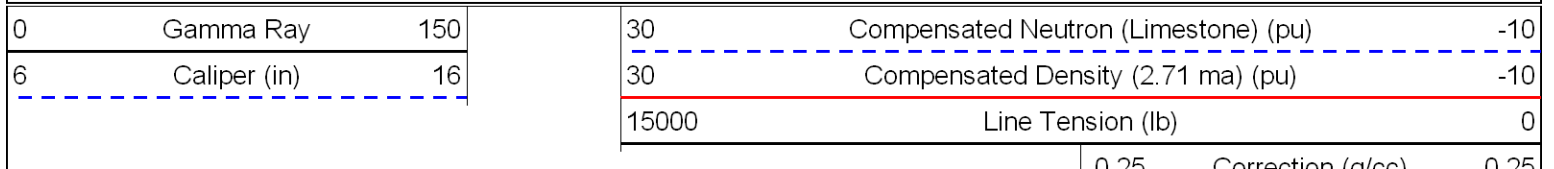
0 Gamma Ray 150
6 Caliper (in) 16

30 Compensated Density (pu) -10
2 Bulk Density (g/cc) 3
15000 Line Tension (lb) 0
-0.25 Correction (g/cc) 0.25
LSPD
(ft/min)

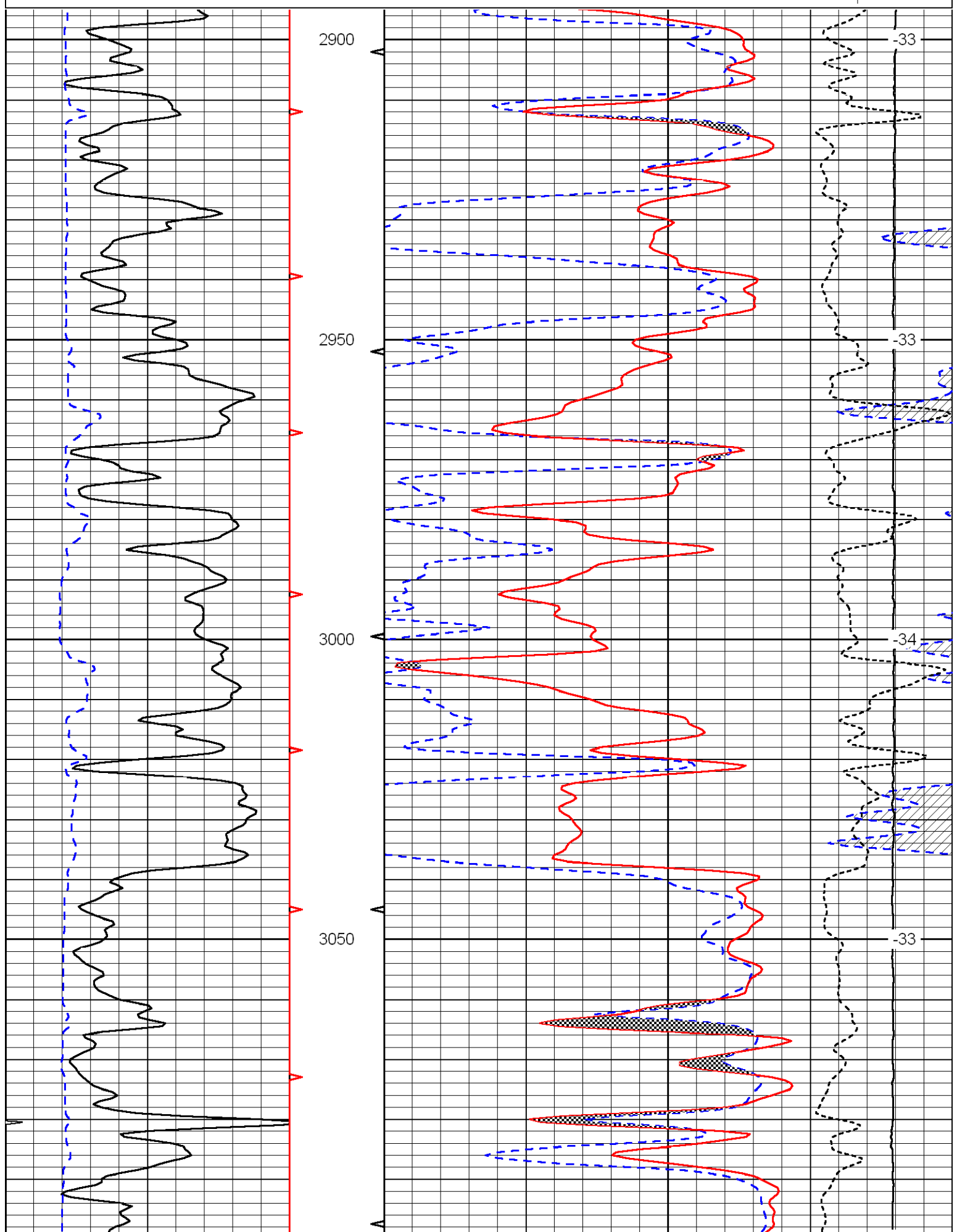


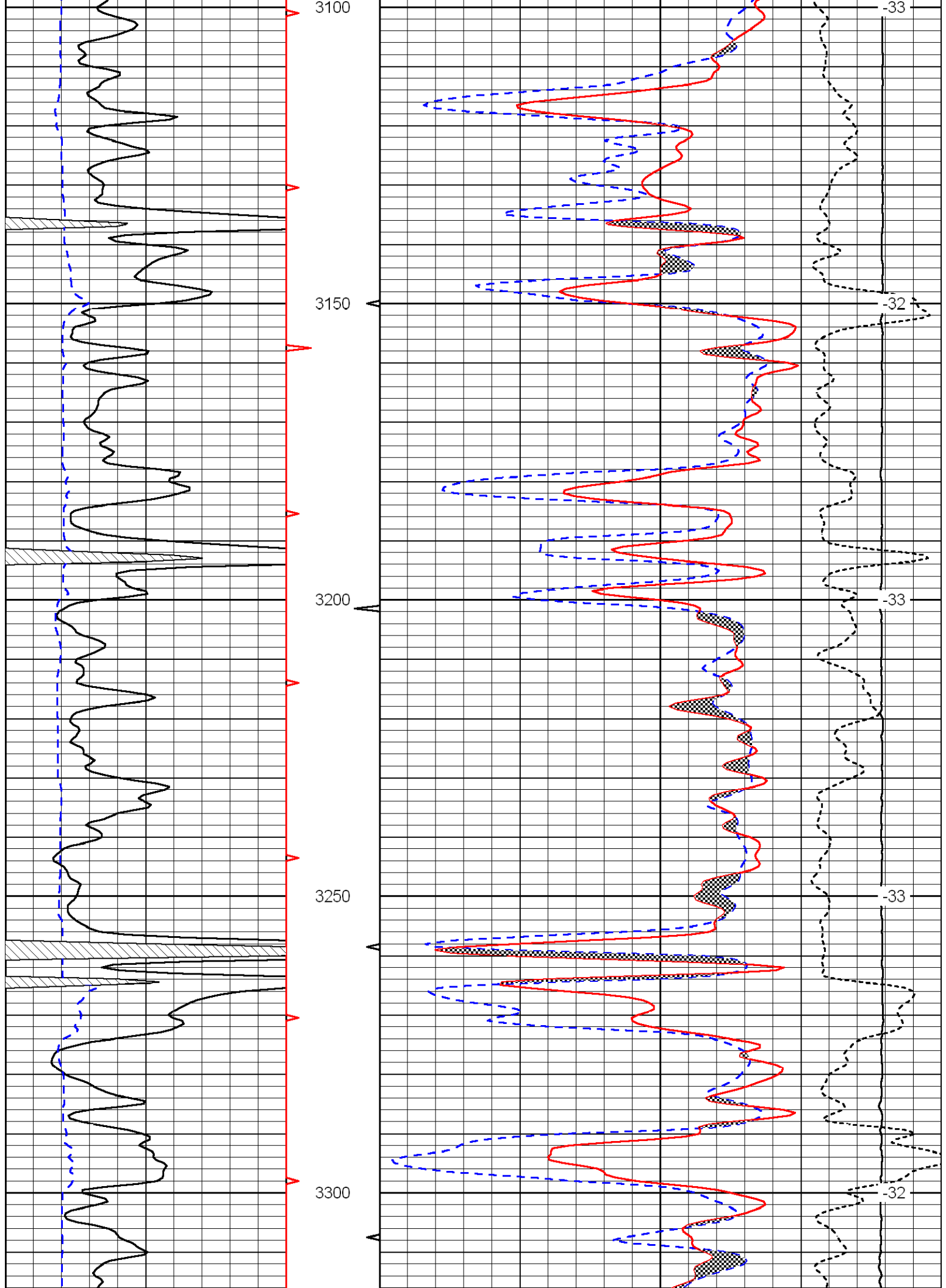


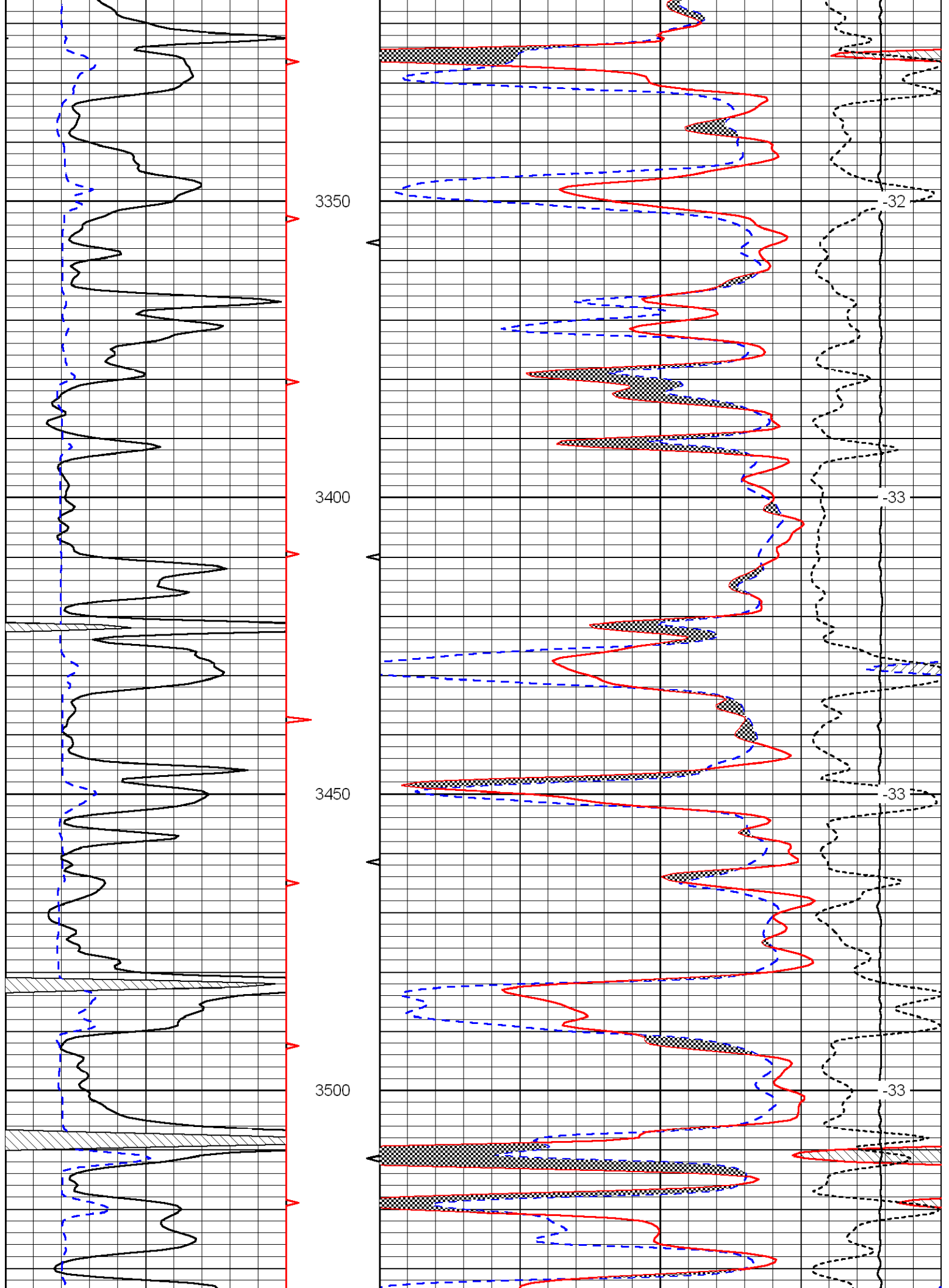
Database File: c:\warrior\data\murfin_collins no. 1-28\murfin062509hd.db
 Dataset Pathname: dil/murf2in
 Presentation Format: cndlspec
 Dataset Creation: Thu Jun 25 16:06:00 2009
 Charted by: Depth in Feet scaled 1:240

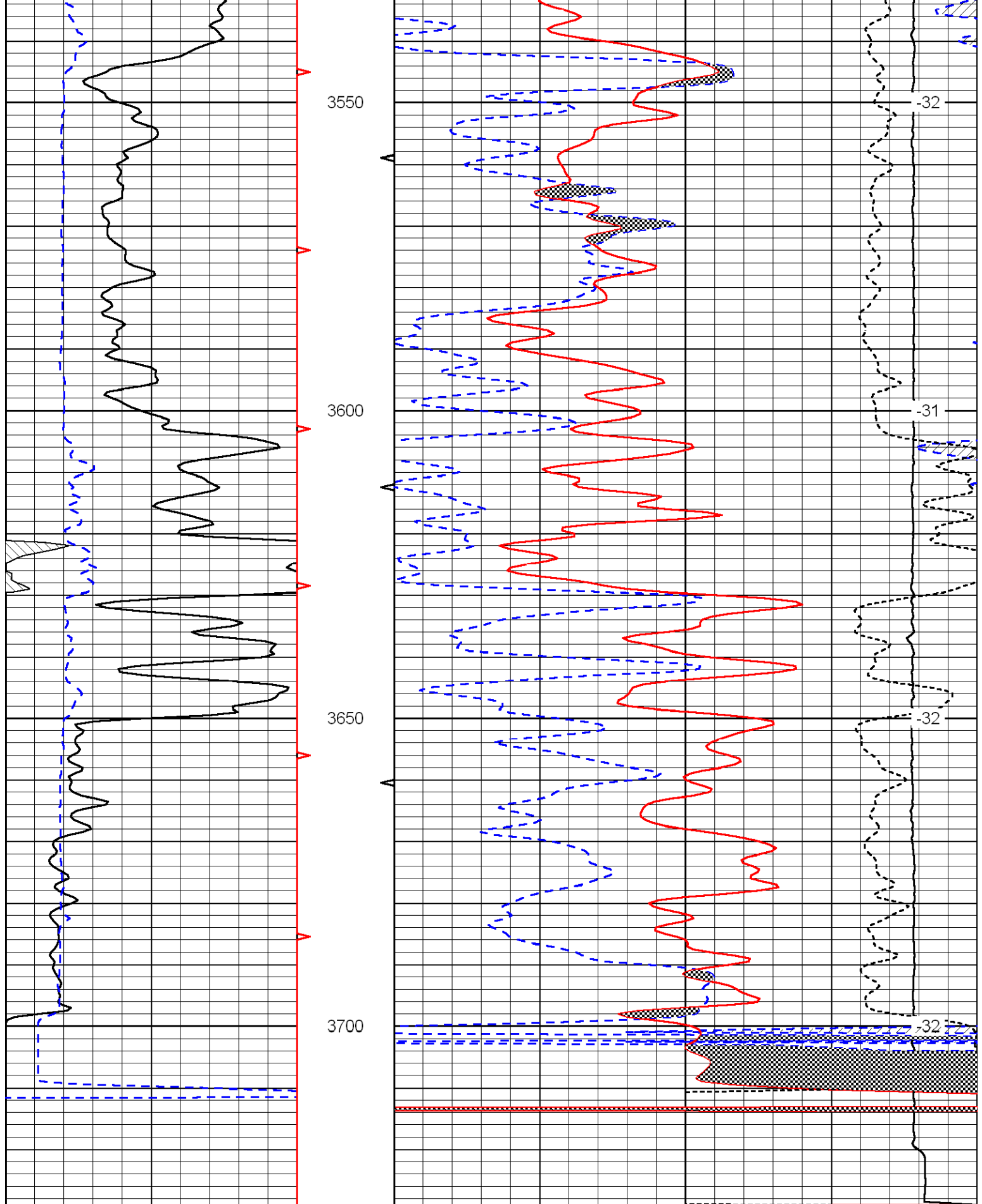


LSPD
(ft/min)









0	Gamma Ray	150
6	Caliper (in)	16

30	Compensated Neutron (Limestone) (pu)	-10
30	Compensated Density (2.71 ma) (pu)	-10
15000	Line Tension (lb)	0

-0.25	Correction (g/cc)	0.25
-------	-------------------	------

LSPD

