



**Borehole Compensated  
Sonic Log**

**DIGITAL LOG (785) 625-3858**

API No. 15-071-20,873-00-00	Company <b>Murfin Drilling Company, Inc.</b>	Location <b>NE SW NW 1900' FSL &amp; 2300' FEL</b>	Other Services CNL / CDL MEL / DIL
	Well <b>Wright #1-4</b>	Elevation 3836	
	Field <b>Wildcat</b>		
	County <b>Greeley</b>		
	State <b>Kansas</b>		
	Sec: <b>4</b>	Twp: <b>17 S</b>	Rge: <b>42 W</b>
Permanent Datum Log Measured From Drilling Measured From	Ground Level Kelly Bushing Kelly Bushing	10 Ft. Above Perm. Datum	K.B. 3846 D.F. G.L. 3836

Date	4/10/2009
Run Number	Two
Type Log	BHC Sonic
Depth Driller	5220
Depth Logger	5220
Bottom Logged Interval	5209
Top Logged Interval	300
Type Fluid In Hole	Chemical
Salinity, PPM CL	6,500
Density	9.4
Level	Full
Max. Rec. Temp. F	130
Operating Rig Time	4 1/2 Hours
Equipment -- Location	17 Hays
Recorded By	T. Martin
Witnessed By	Scott Banks

Borehole Record		Casing Record					
Run No	Bit	From	To	Size	Wgt.	From	To
1	12.25	00	310	8.625	24#	00	310
2	7.875	310	5220				

<<< Fold Here >>>

All interpretations are opinions based on inferences from electrical or other measurements and we cannot and do not guarantee the accuracy or correctness of any interpretation, and we shall not, except in the case of gross or willful negligence on our part, be liable or responsible for any loss, costs, damages, or expenses incurred or sustained by anyone resulting from any interpretation made by any of our officers, agents or employees. These interpretations are also subject to our general terms and conditions set out in our current Price Schedule.

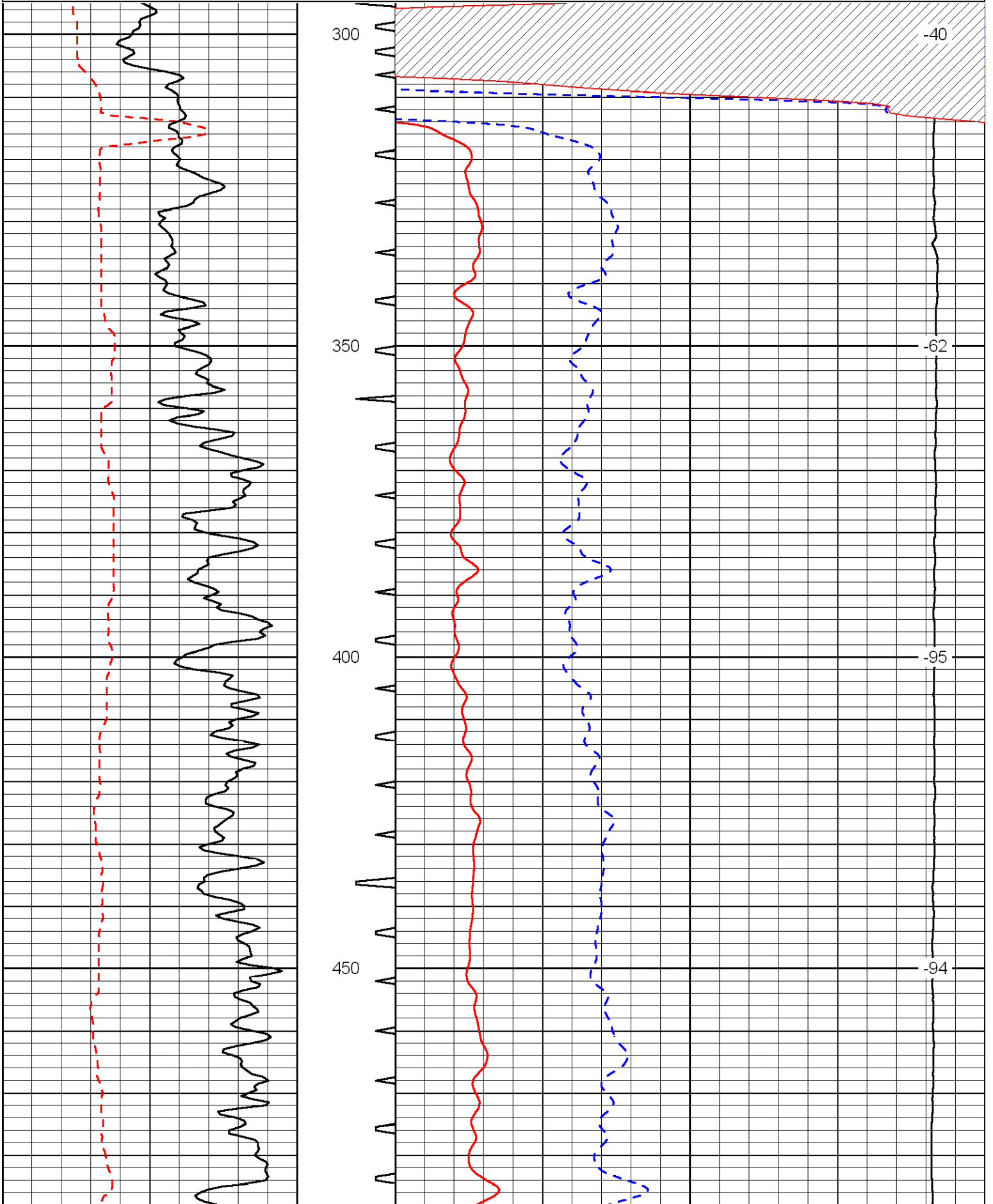
**Comments**

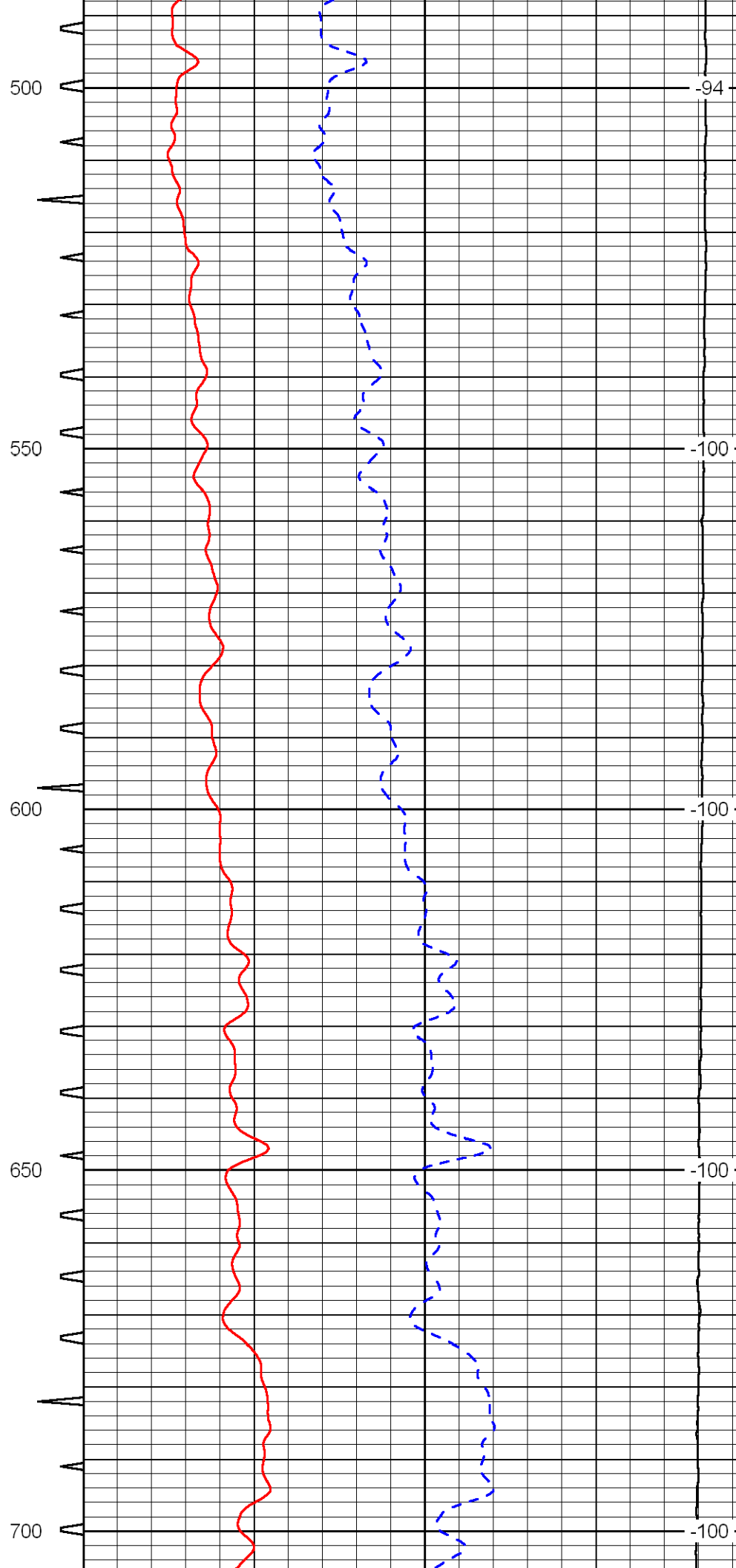
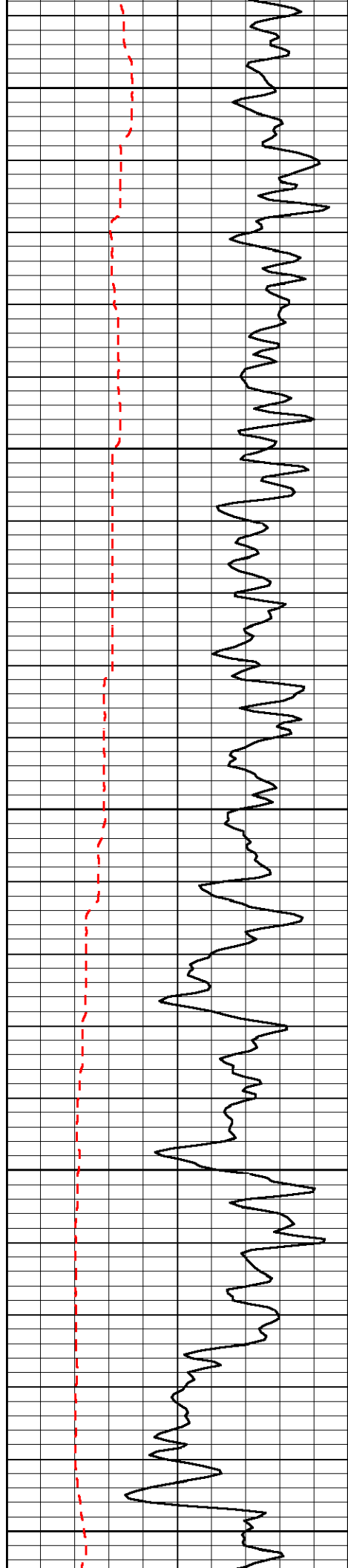
Thank you for using Log-Tech, Inc.  
(785) 625-3858

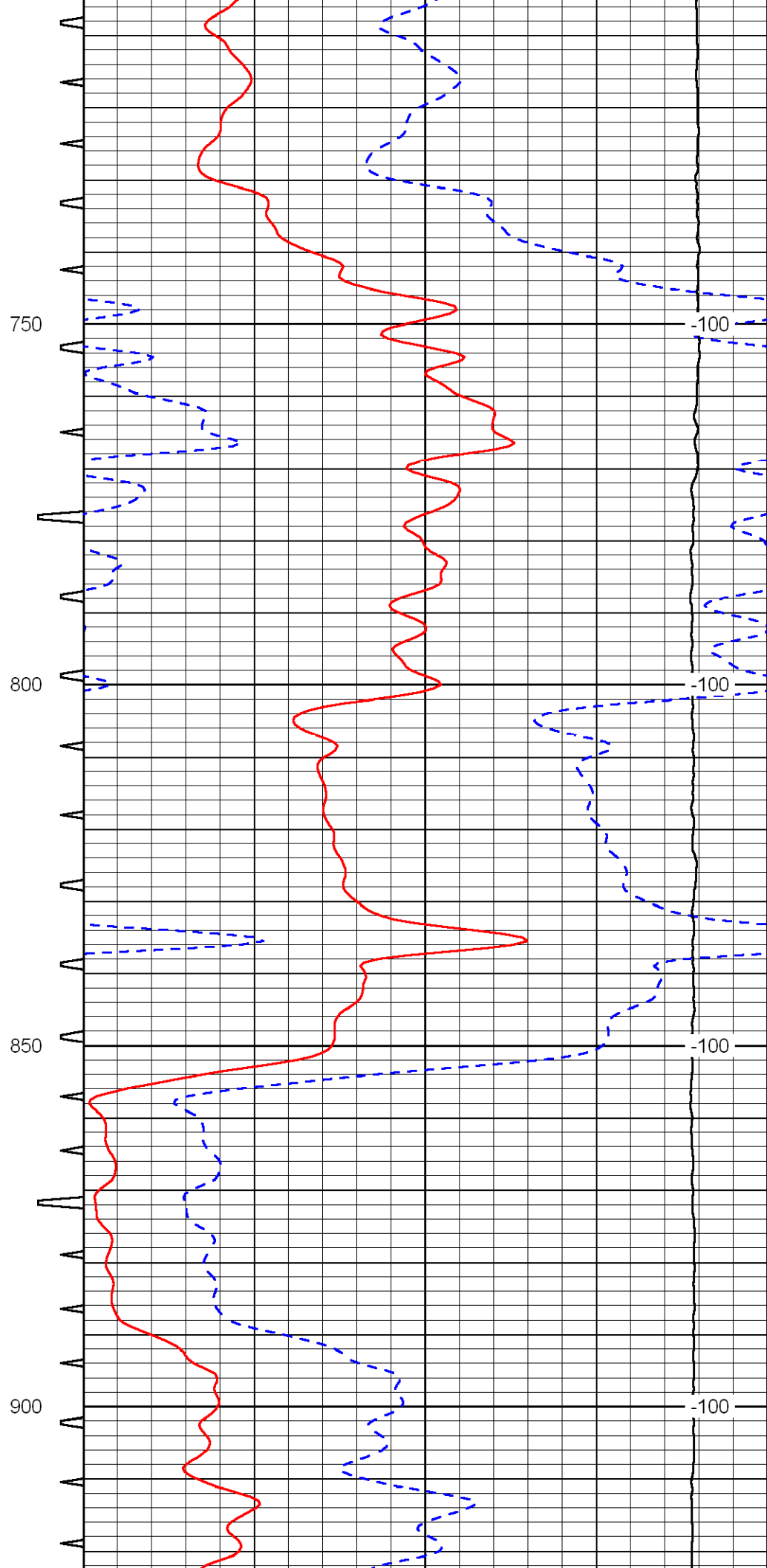
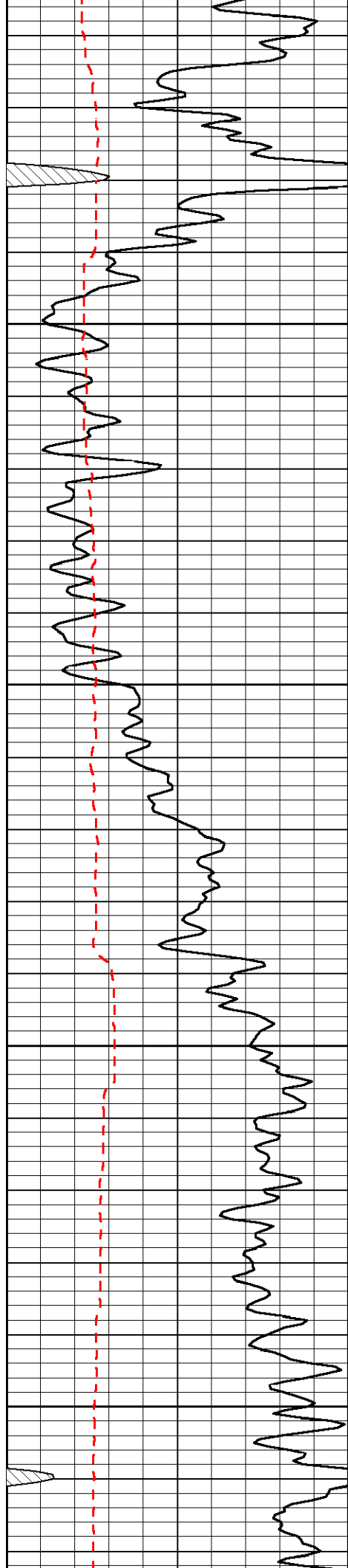
Sharon Springs, 17 S (Btwn MM 123 & 122).  
11 W, 3 1/2 S, W Into

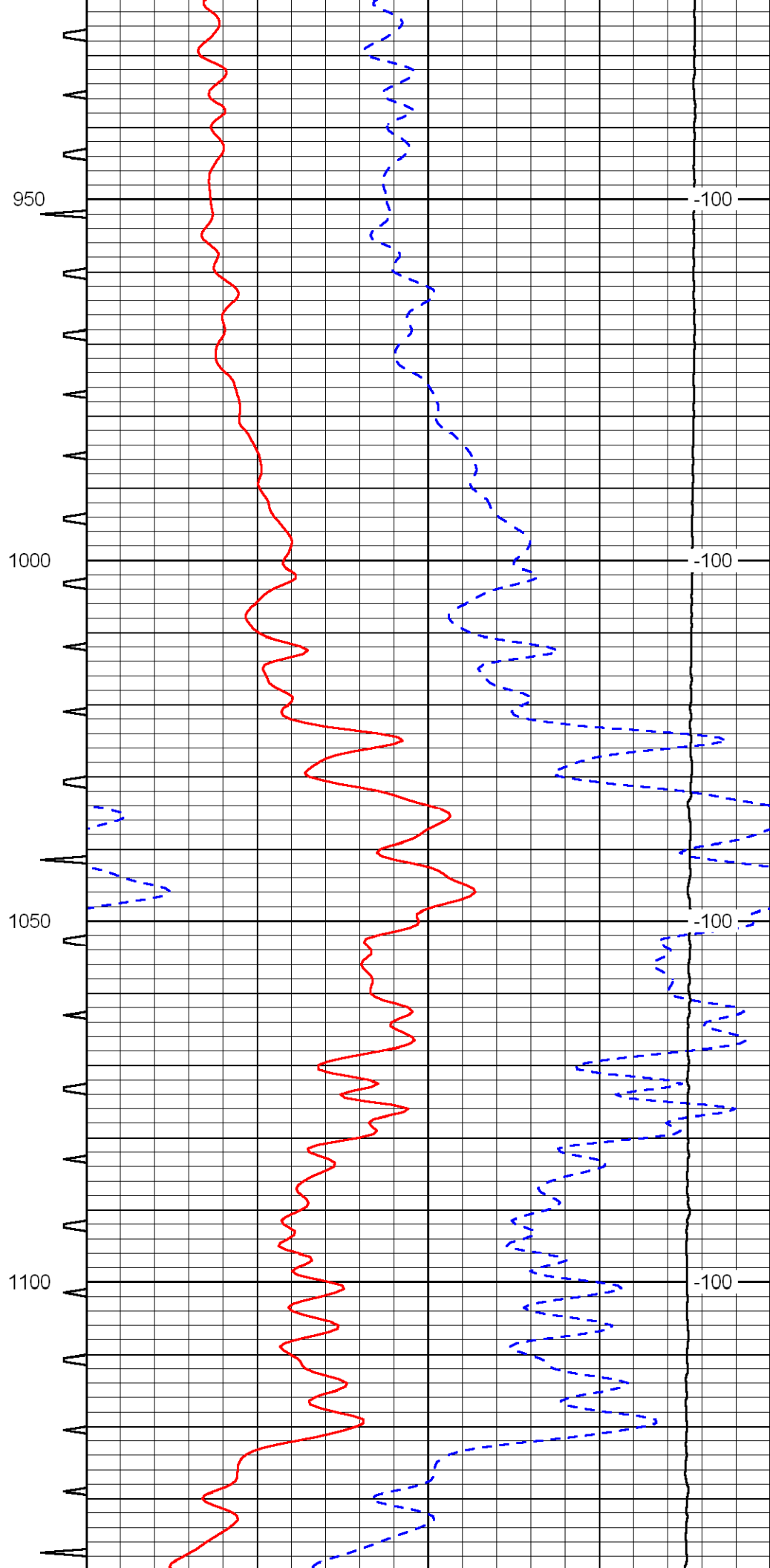
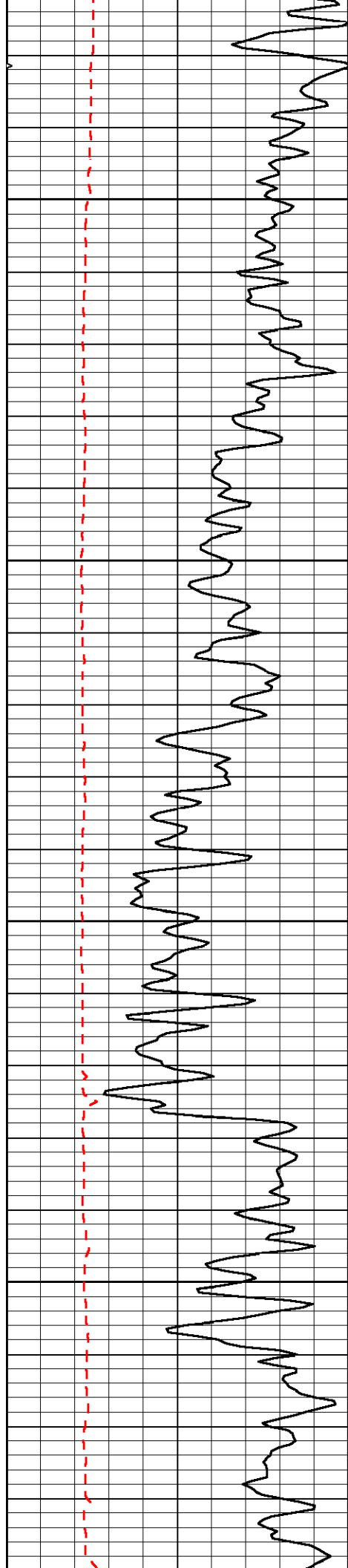
Database File: c:\warrior\data\murfin\_wright #1-4\mfnhd.db  
 Dataset Pathname: dil/mfnstk  
 Presentation Format: sonic  
 Dataset Creation: Fri Apr 10 19:04:10 2009  
 Charted by: Depth in Feet scaled 1:240

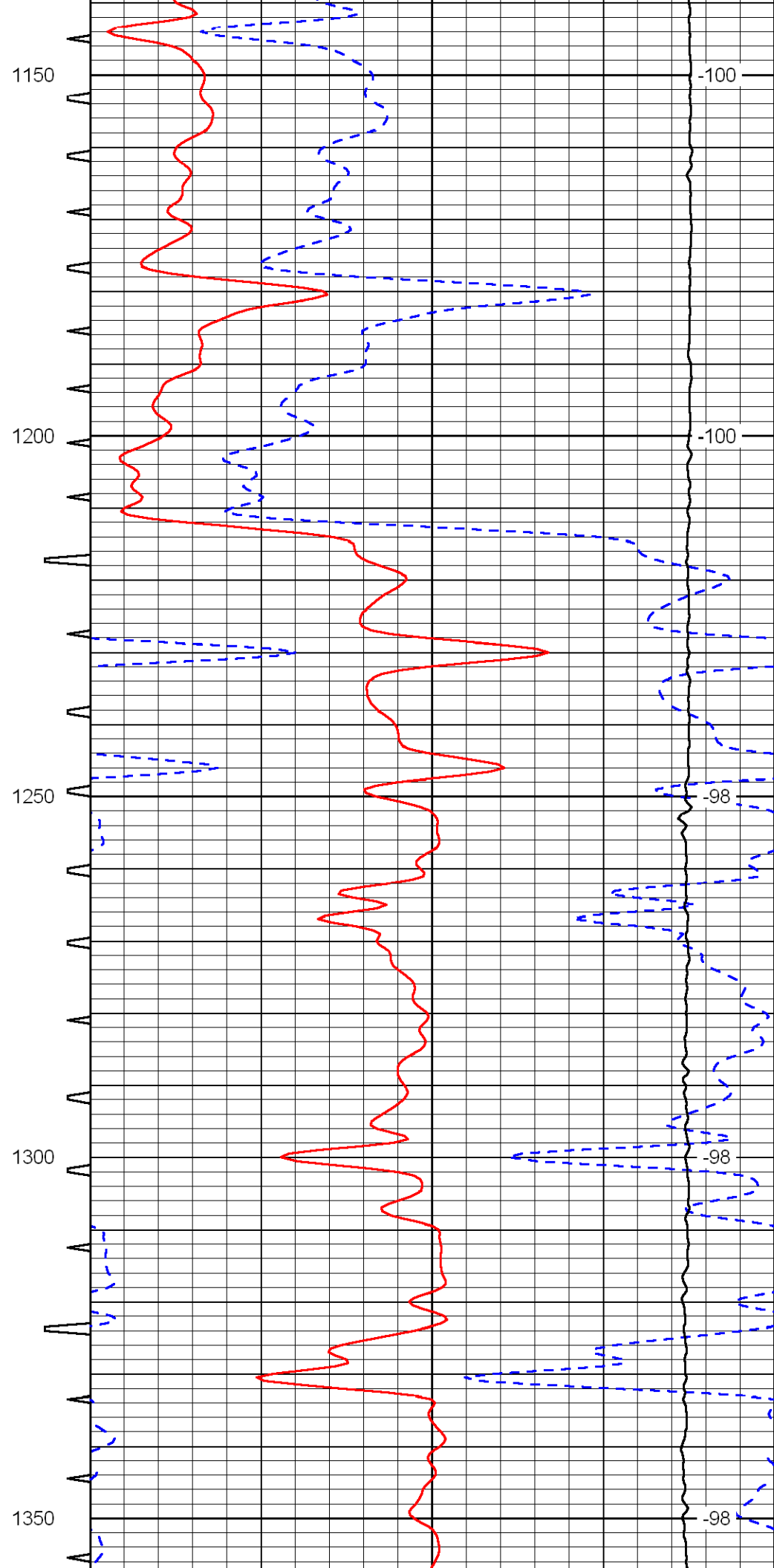
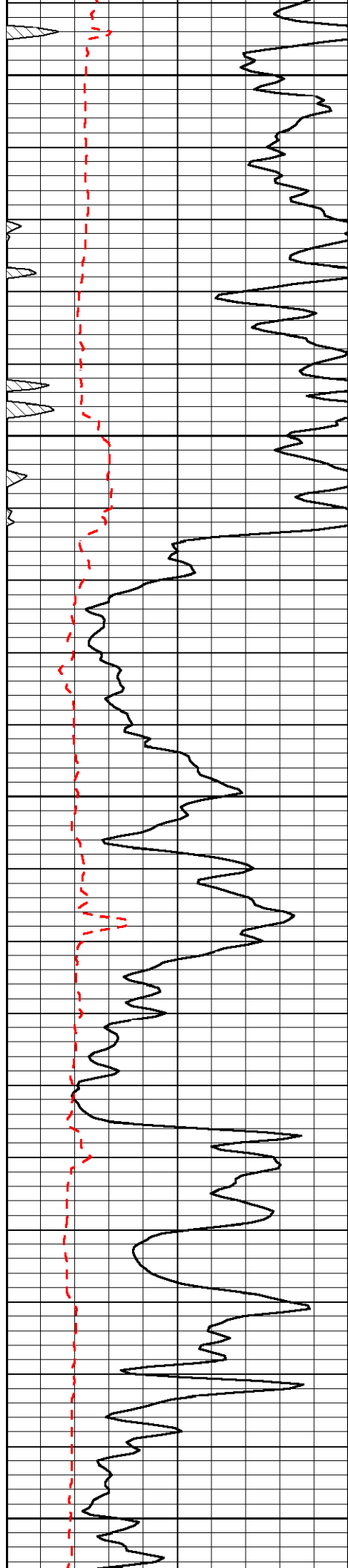
0	Gamma Ray	150	Sonic Int	140	Delta Time (usec/ft) (usec/ft)	40
150	Gamma Ray	300	5 (msec)	0	SPOR (pu)	-10
6	Caliper (in)	16		10000	LTEN (lb) (lb)	0
						LSPD (ft/min)

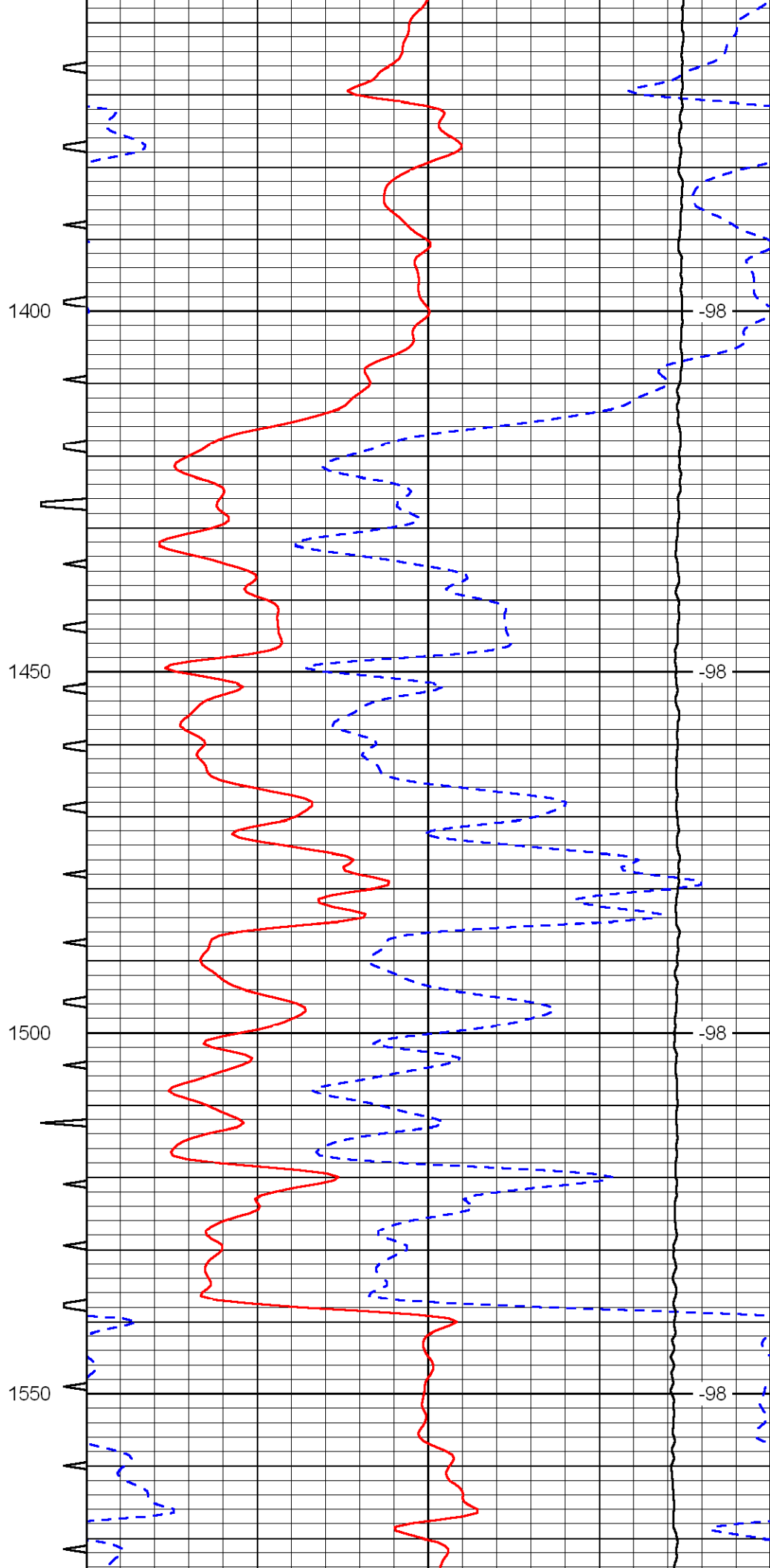


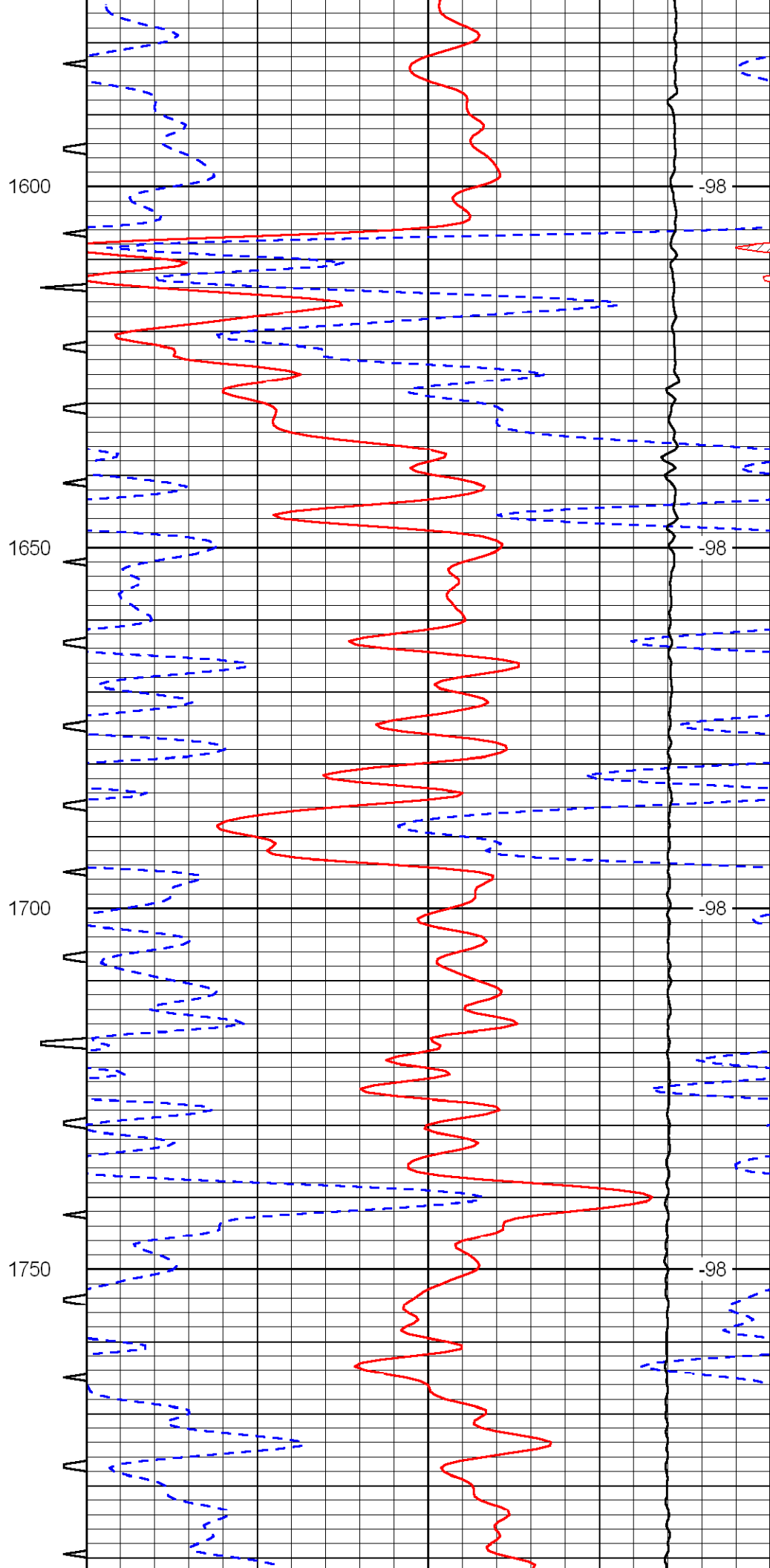
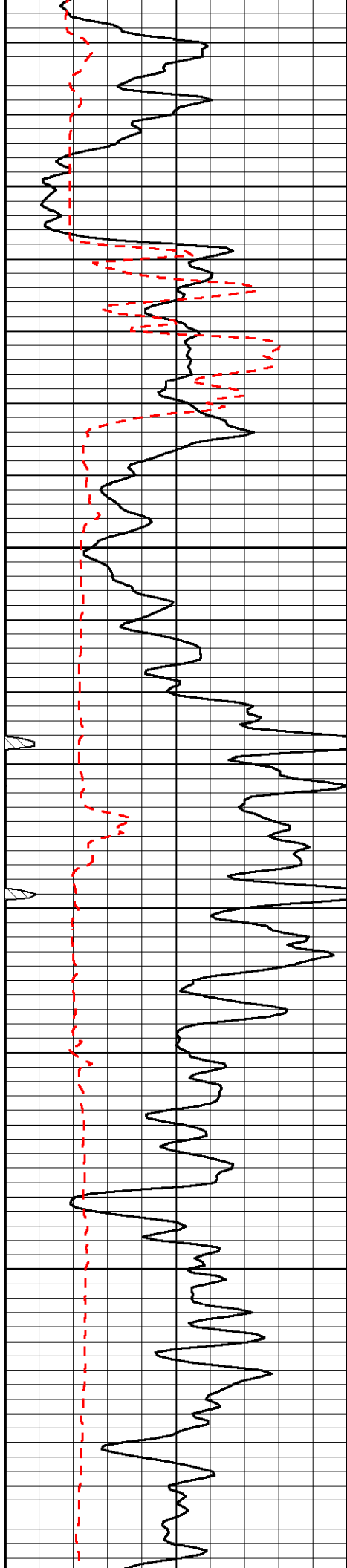


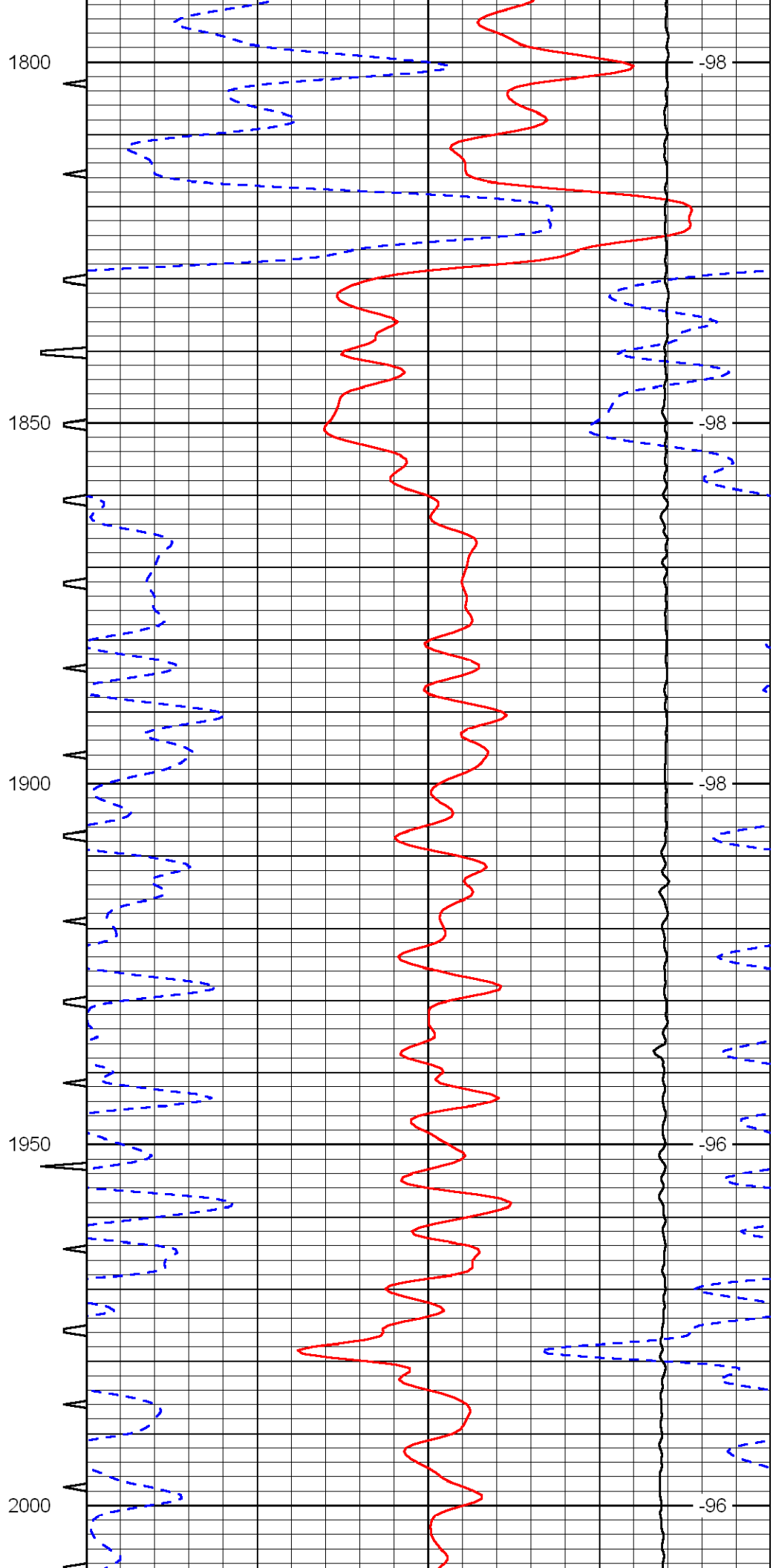
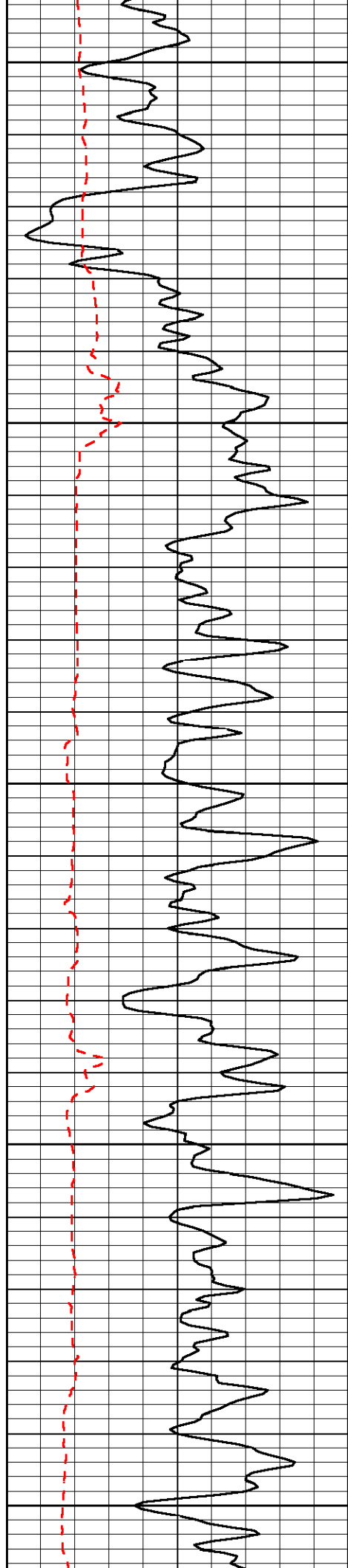


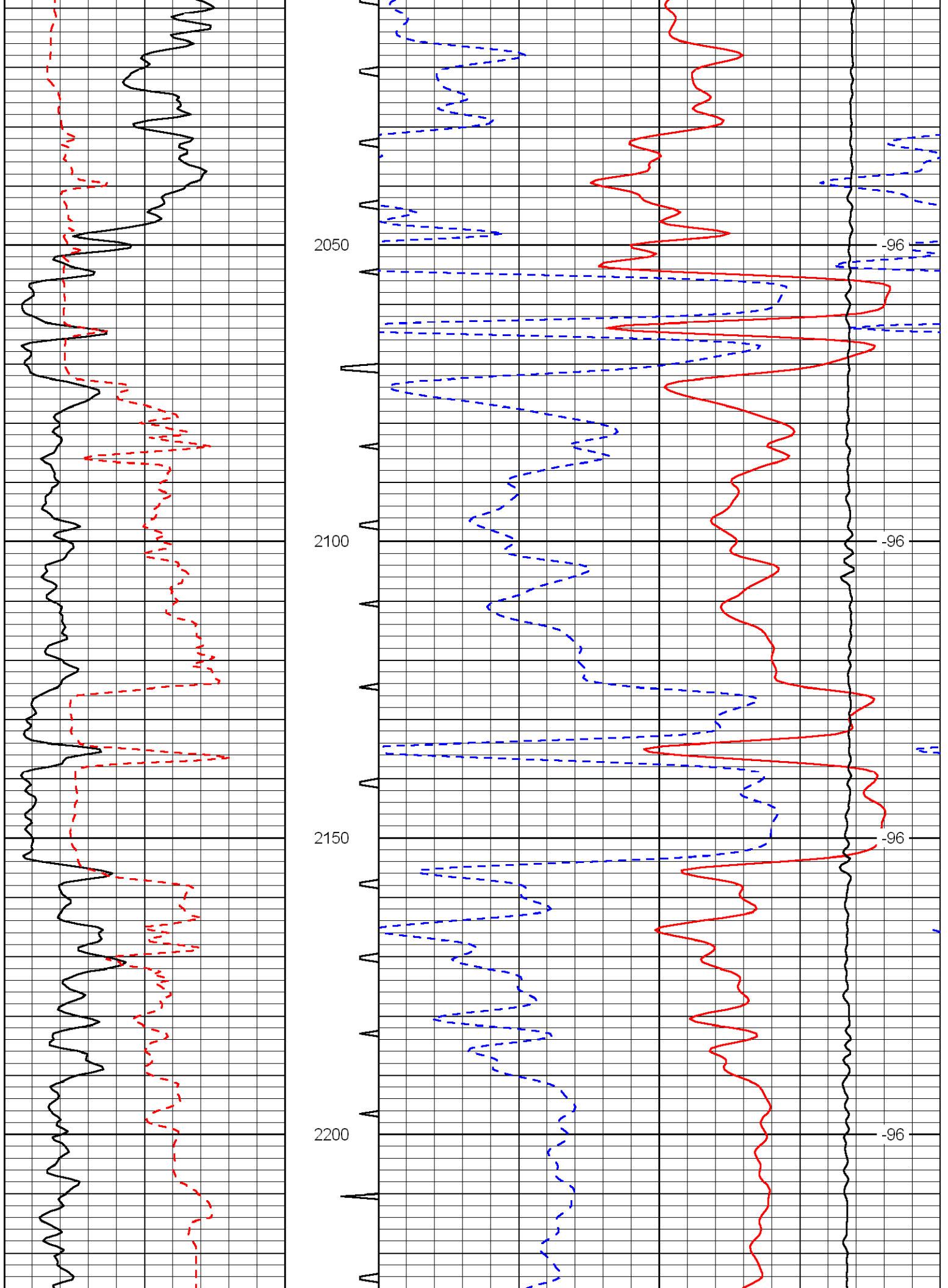


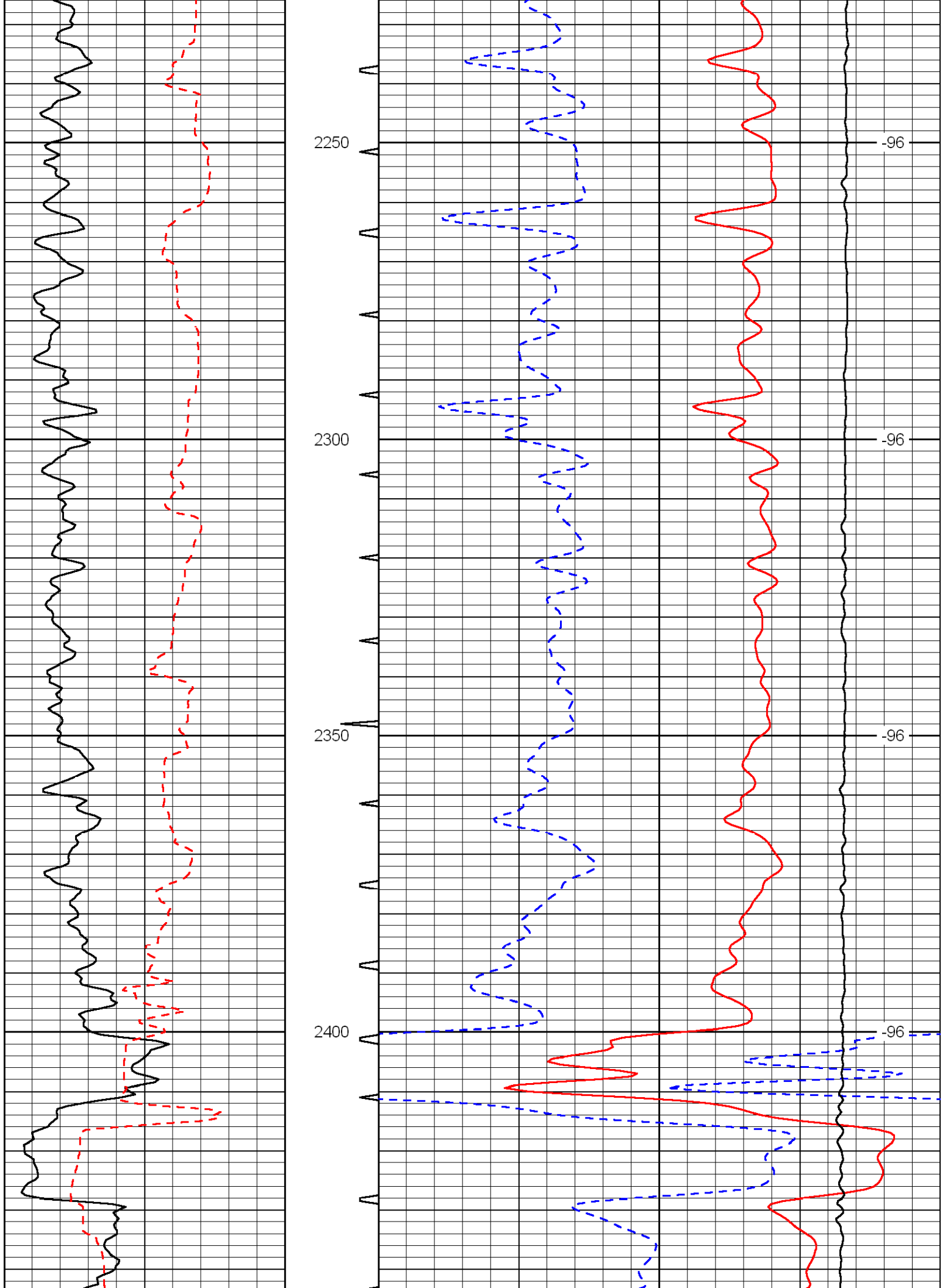


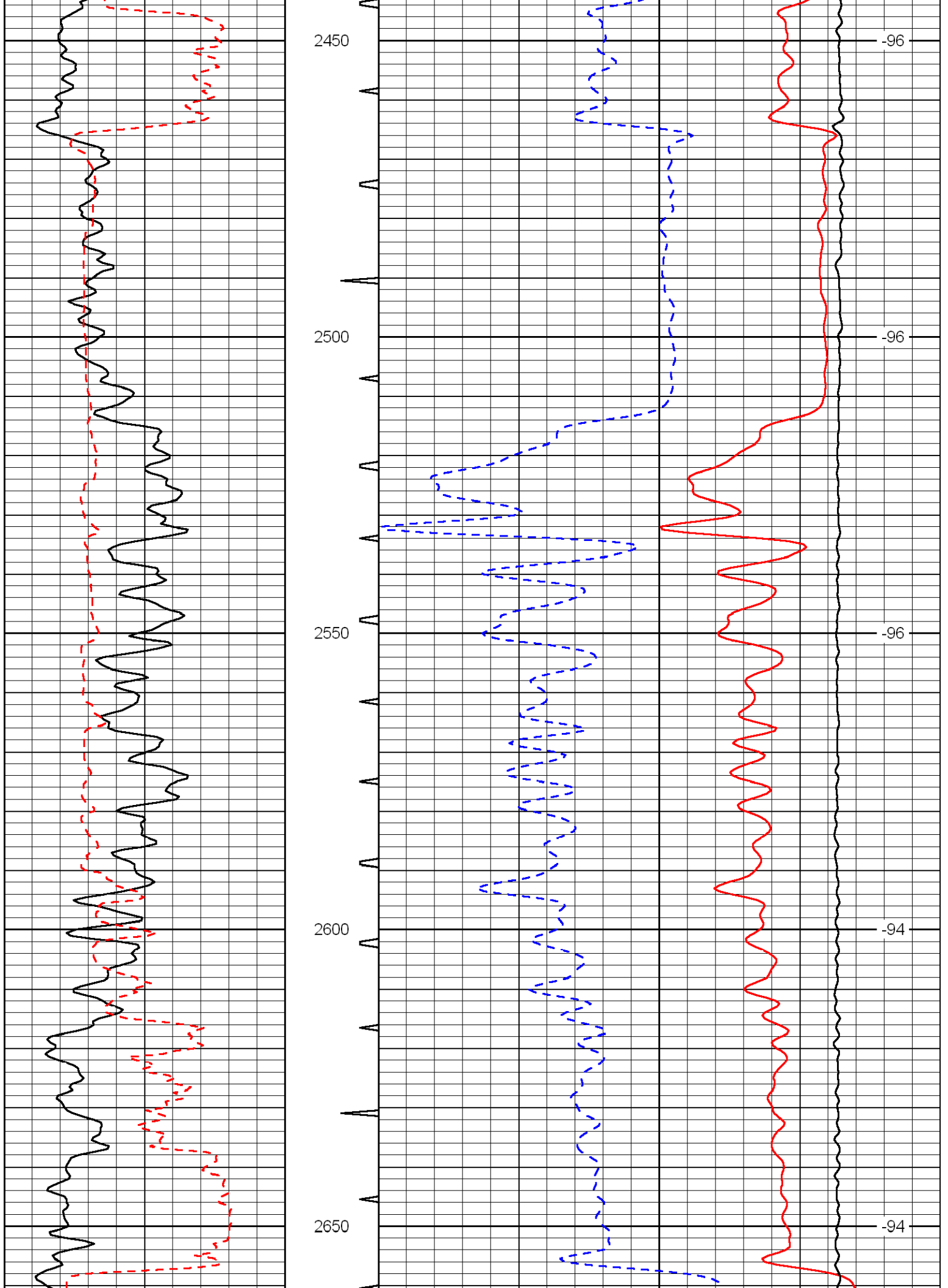


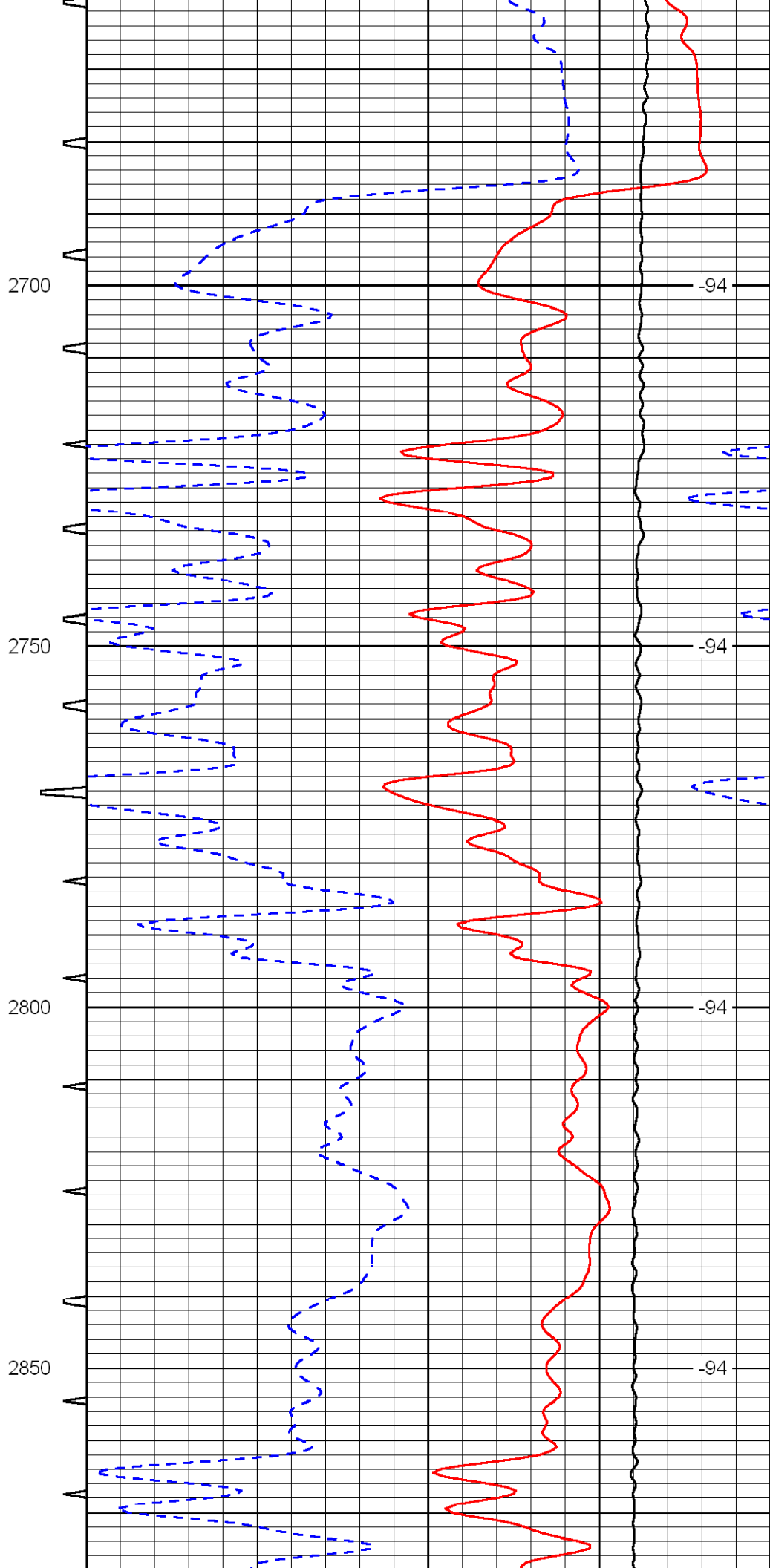
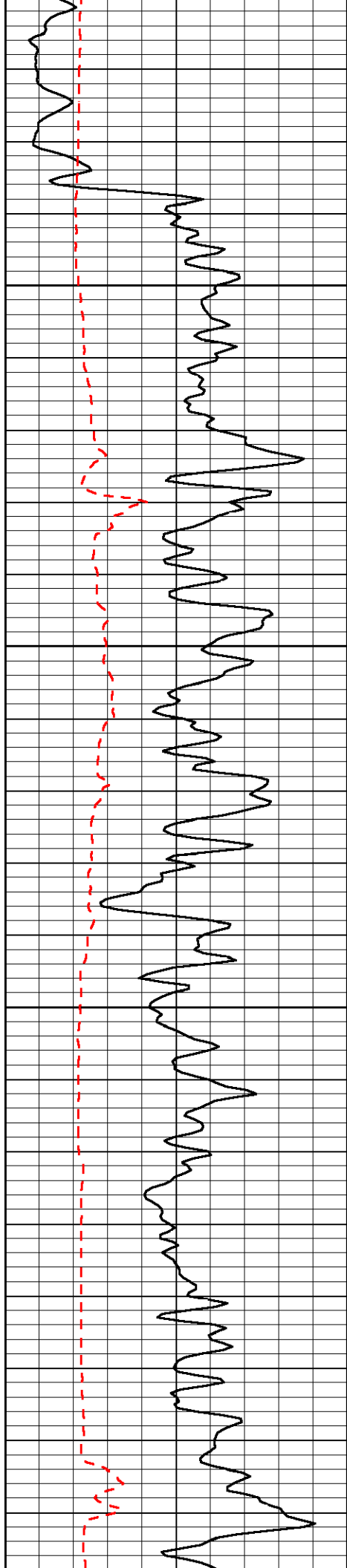


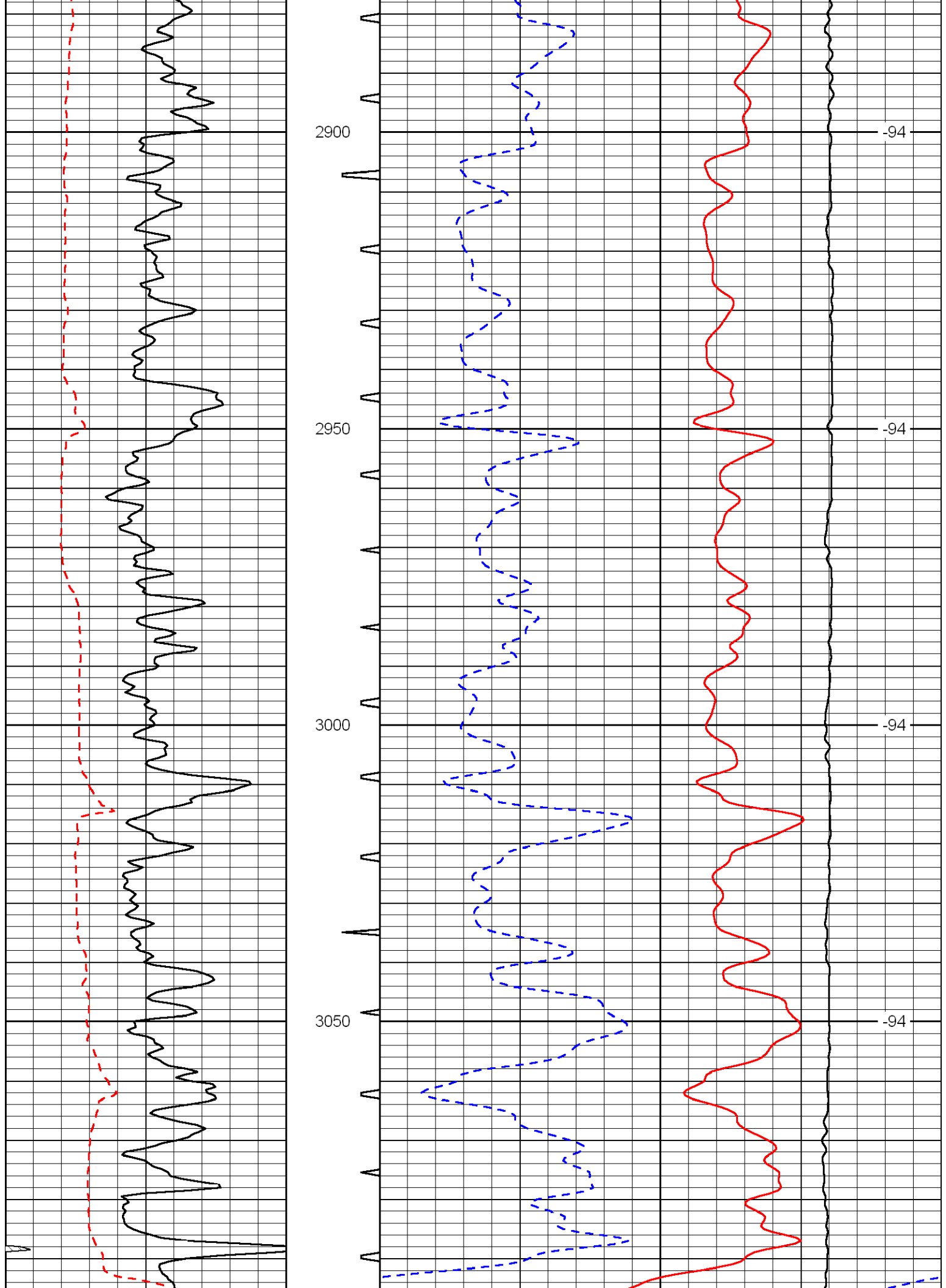


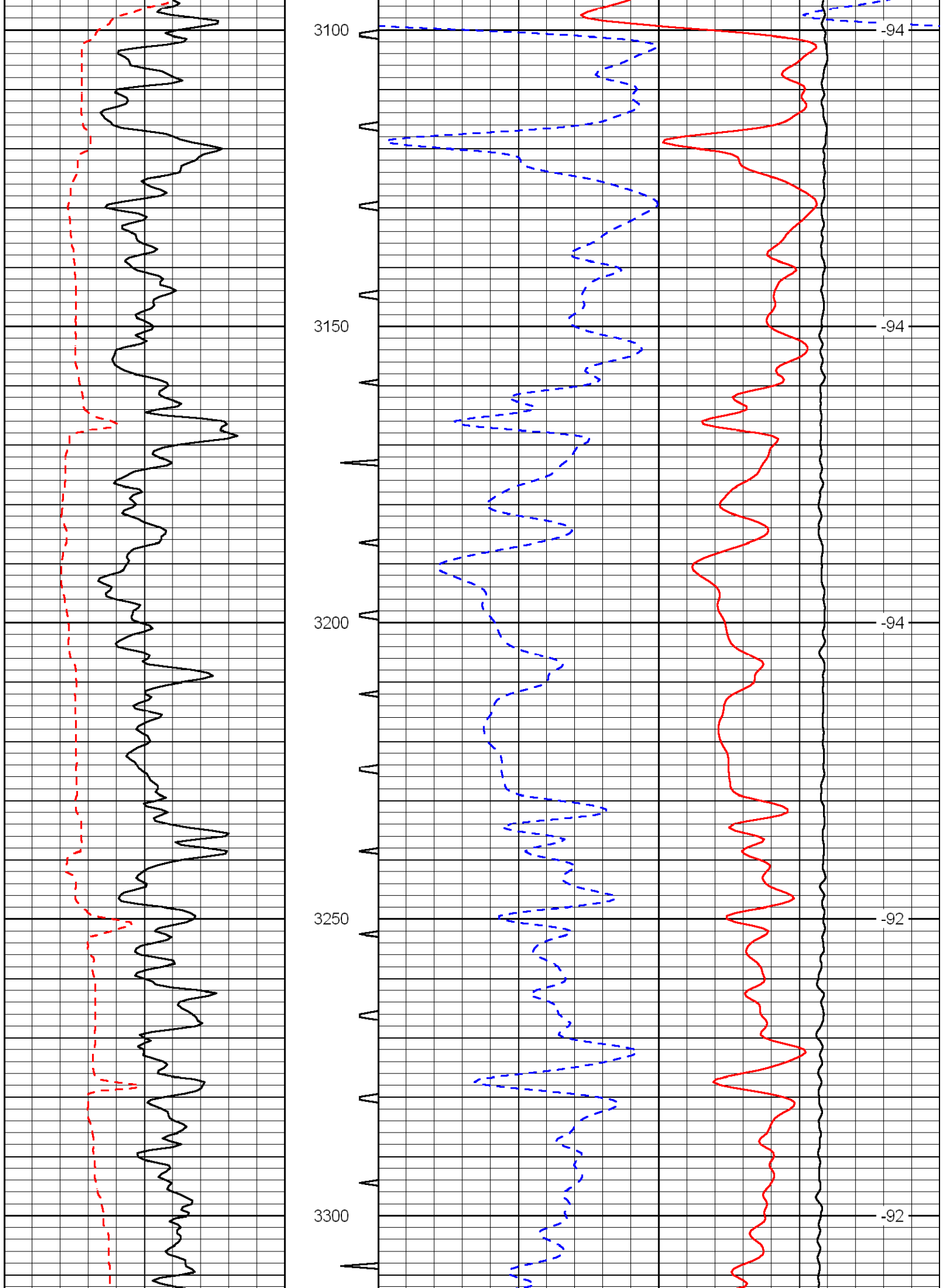


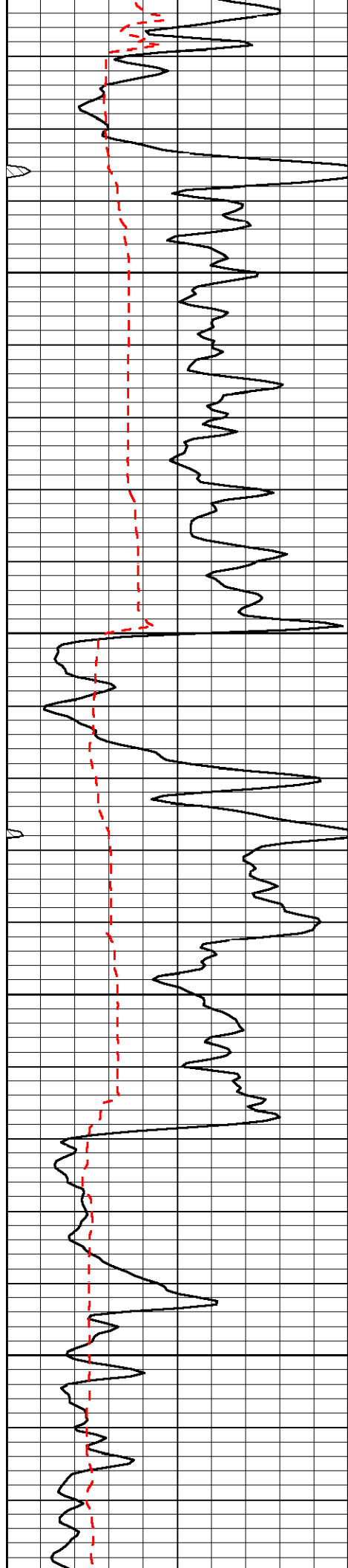










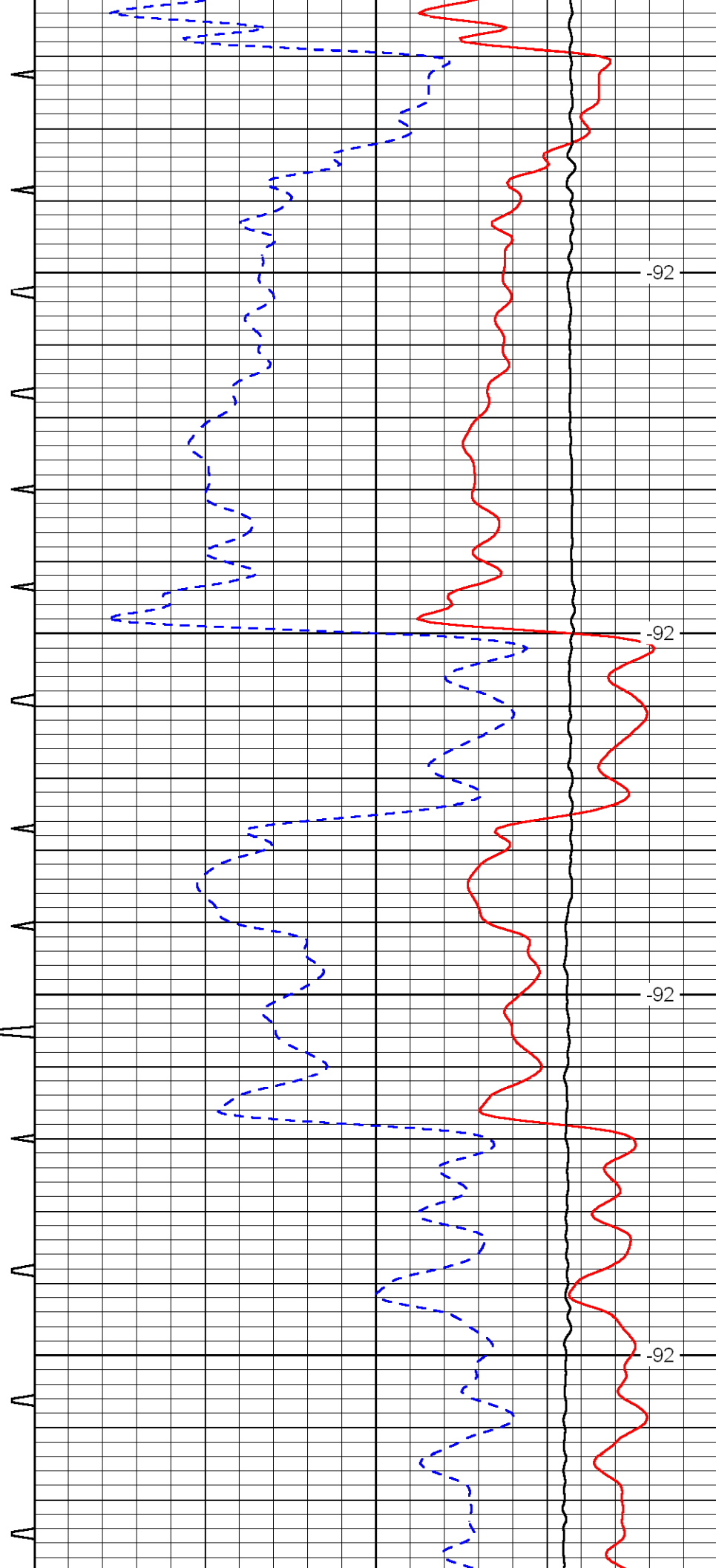


3350

3400

3450

3500



-92

-92

-92

-92

