



Microresistivity Log

DIGITAL LOG (785) 625-3858

API No.	15-071-20,873-00-00		
Company	Murfin Drilling Company, Inc.		
Well	Wright #1-4		
Field	Wildcat		
County	Greeley	State	Kansas
Location	NE SW NW 1900' FSL & 2300' FEL		
Sec: 4	Twp: 17 S	Rge: 42 W	Other Services CNL / CDL DIL / BHCS
Permanent Datum	Ground Level	Elevation 3836	Elevation
Log Measured From	Kelly Bushing	10 Ft. Above Perm. Datum	K.B. 3846
Drilling Measured From	Kelly Bushing		D.F. 3836
			G.L. 3836

Date	4/10/2009	
Run Number	Two	
Depth Driller	5220	
Depth Logger	5220	
Bottom Logged Interval	5219	
Top Log Interval	3700	
Casing Driller	8.625 @ 310	
Casing Logger	3043	
Bit Size	7.875	
Type Fluid in Hole	Chemical	
Salinity, ppm CL	6,500	
Density / Viscosity	9.4	65
pH / Fluid Loss	11.5	7.8
Source of Sample	Flowline	
Rm @ Meas. Temp	0.83 @	72
Rmf @ Meas. Temp	0.62 @	72
Rmc @ Meas. Temp	1.12 @	72
Source of Rmf / Rmc	Charts	
Rm @ BHT	0.46 @	130
Operating Rig Time	4 1/2 Hours	
Max Rec. Temp. F	130	
Equipment Number	17	
Location	Hays	
Recorded By	T. Martin	
Witnessed By	Scott Banks	B. Reiners
		Sean Deenihan

<<< Fold Here >>>

All interpretations are opinions based on inferences from electrical or other measurements and we cannot and do not guarantee the accuracy or correctness of any interpretation, and we shall not, except in the case of gross or willful negligence on our part, be liable or responsible for any loss, costs, damages, or expenses incurred or sustained by anyone resulting from any interpretation made by any of our officers, agents or employees. These interpretations are also subject to our general terms and conditions set out in our current Price Schedule.

Comments

Thank you for using Log-Tech, Inc.
(785) 625-3858

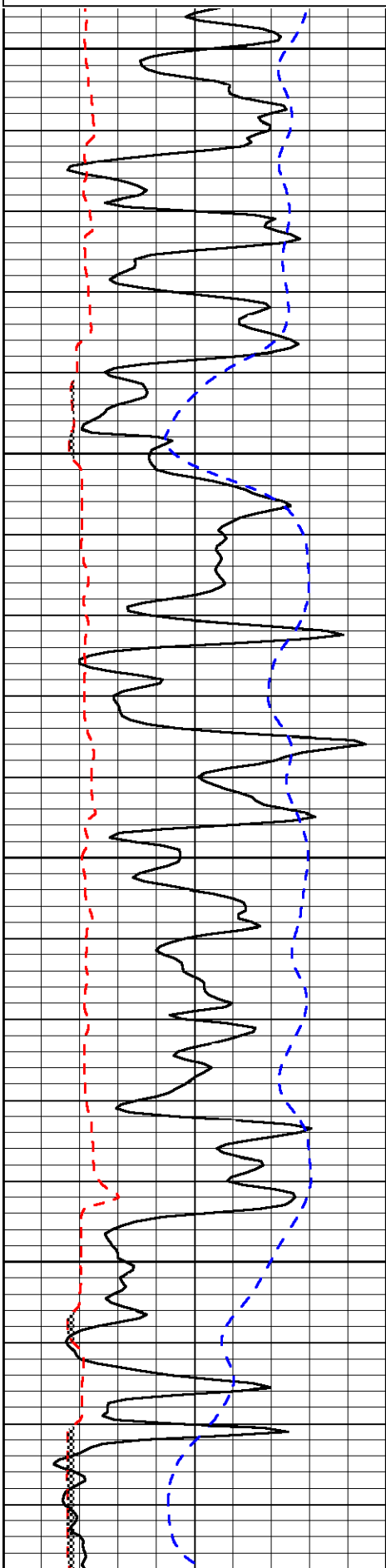
Sharon Springs, 17 S (Btwn MM 123 & 122).
11 W, 3 1/2 S, W Into

Database File: c:\warrior\data\murfin_wright #1-4\mfnhd.db
 Dataset Pathname: dil/mfnstk
 Presentation Format: micro
 Dataset Creation: Fri Apr 10 19:04:10 2009
 Charted by: Depth in Feet scaled 1:240

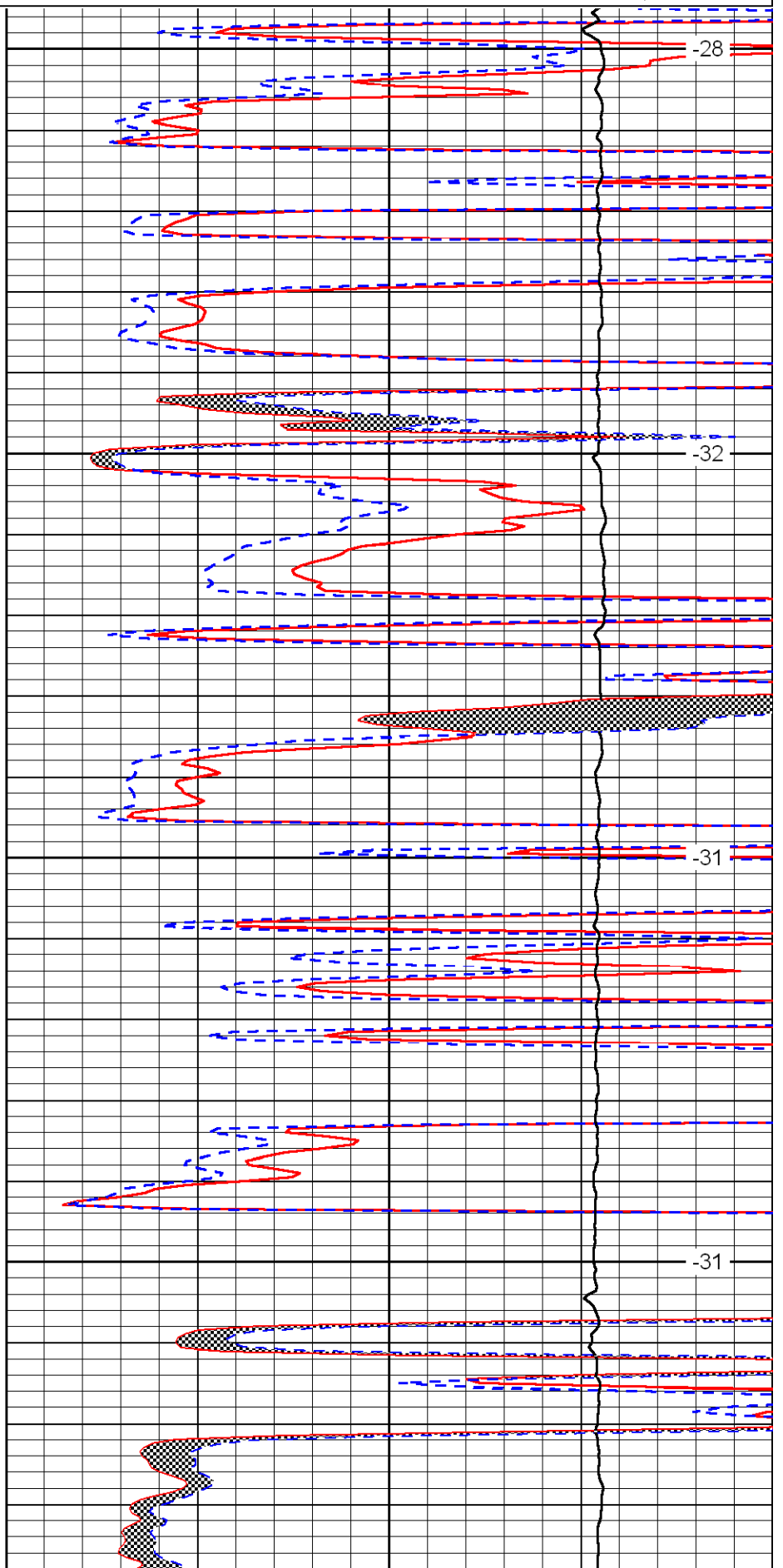
0	Gamma Ray	150
6	Micro Log Caliper (in)	16
-200	SP (MV)	0

0	Micro Inverse 1 X 1 (Ohm-m)	40
0	Micro Normal 2" (Ohm-m)	40
10000	Line Weight (lb)	0

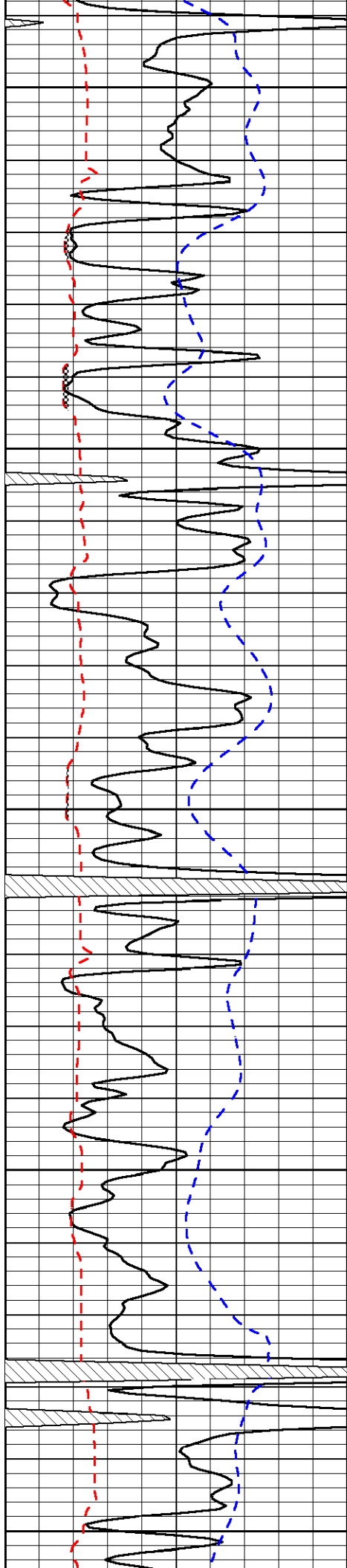
LSPD
(ft/min)



3700
3750
3800
3850



-28
-32
-31
-31



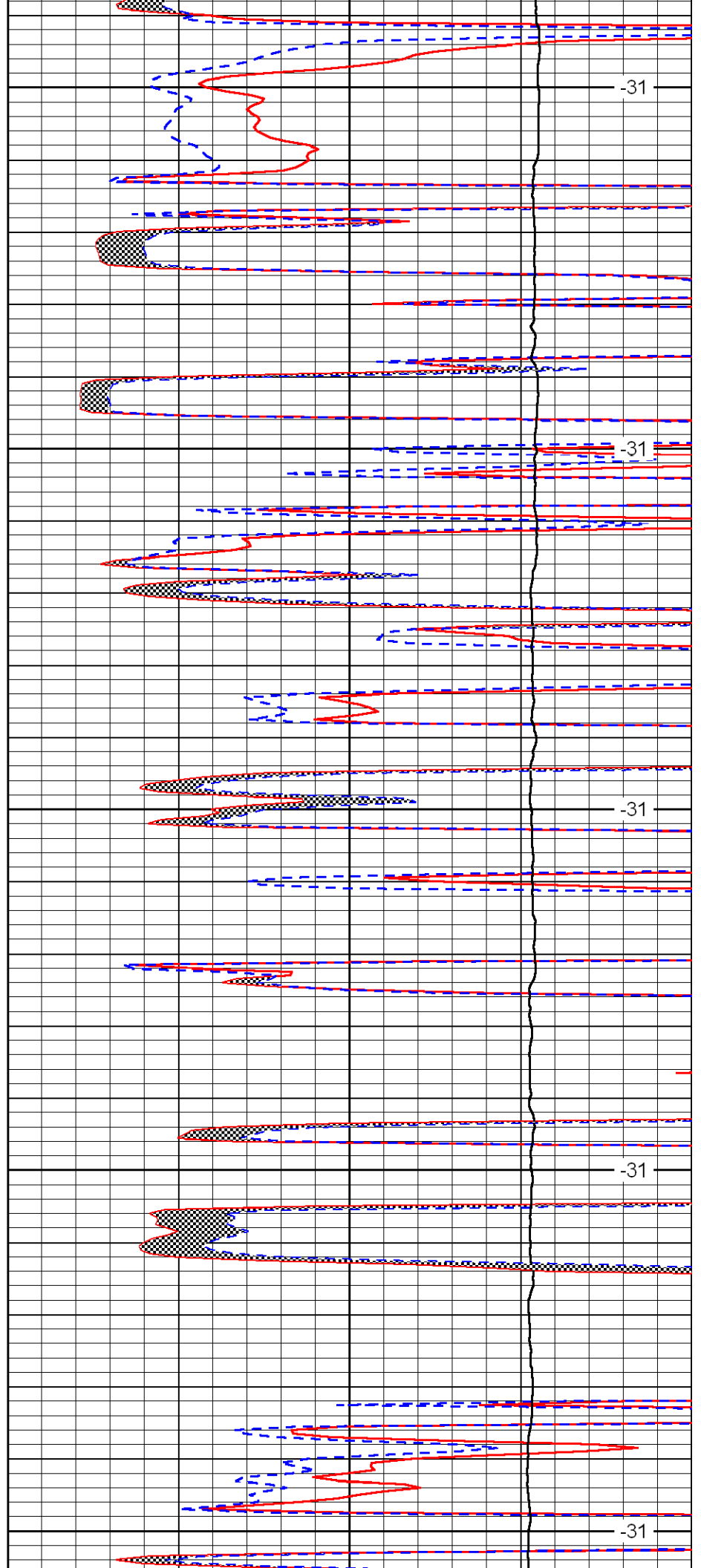
3900

3950

4000

4050

4100



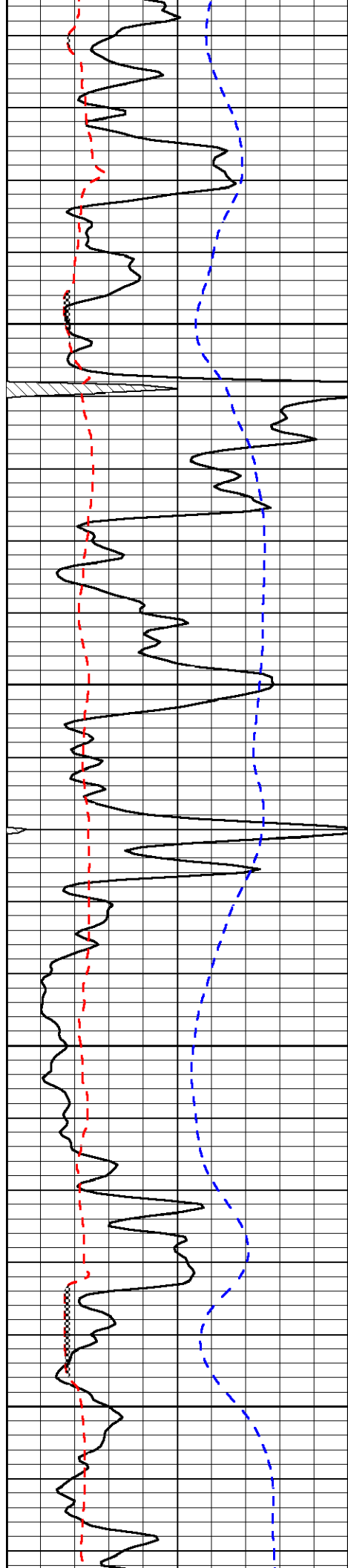
-31

-31

-31

-31

-31

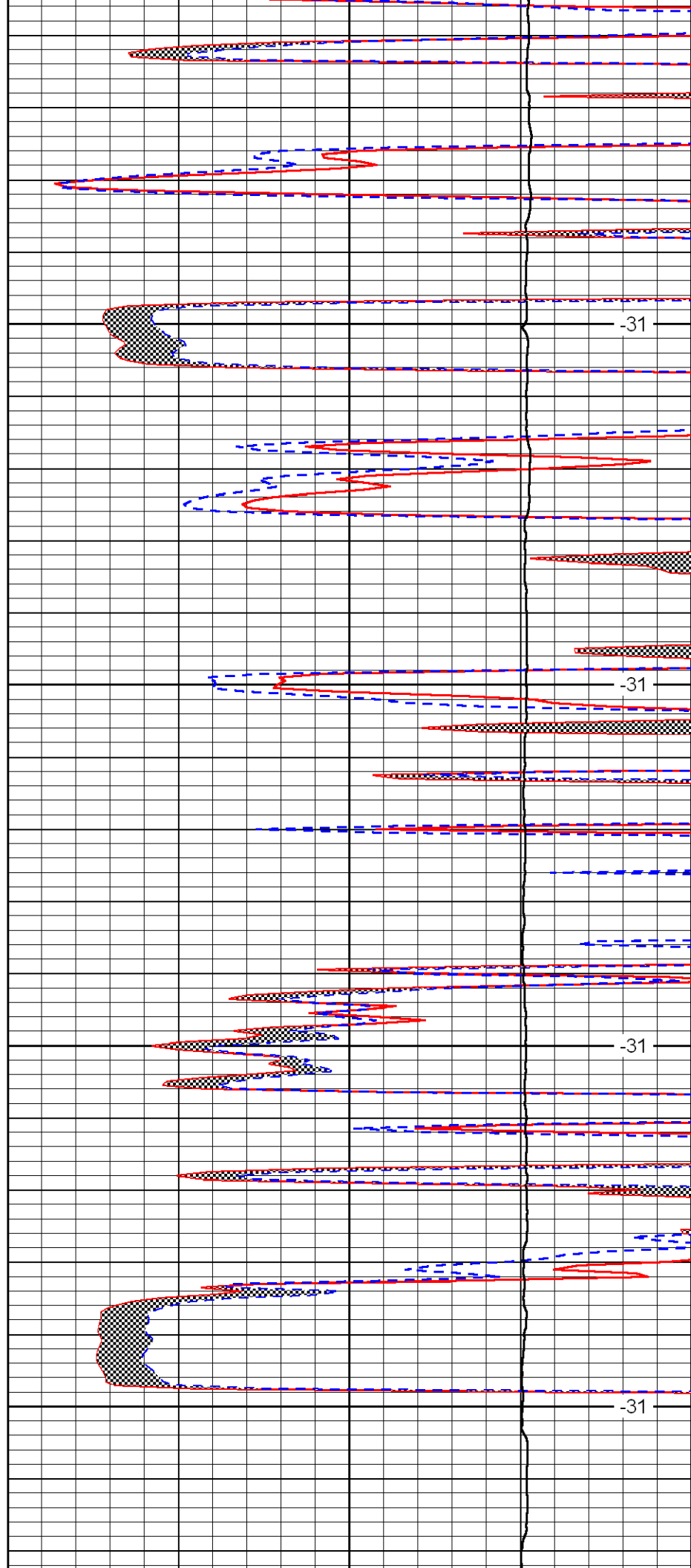


4150

4200

4250

4300

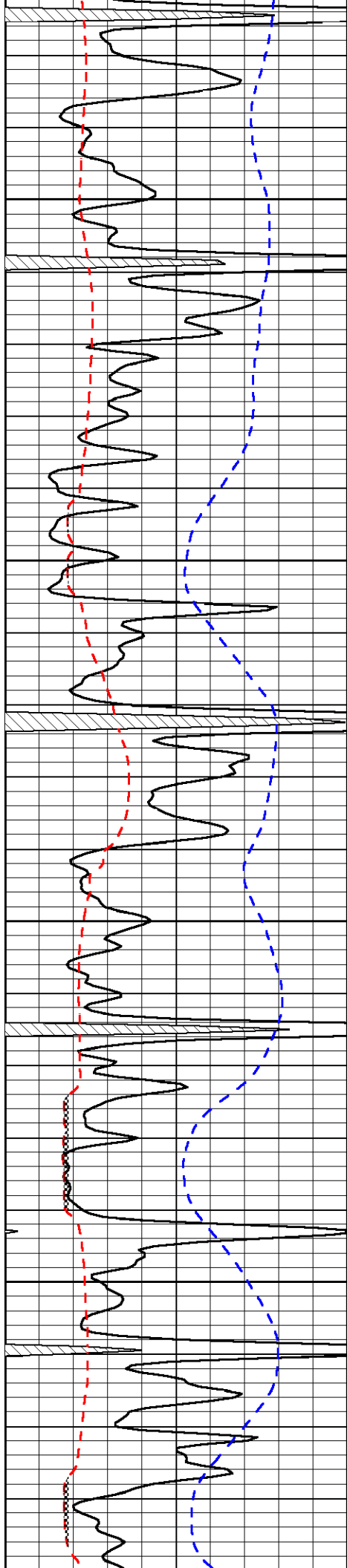


-31

-31

-31

-31

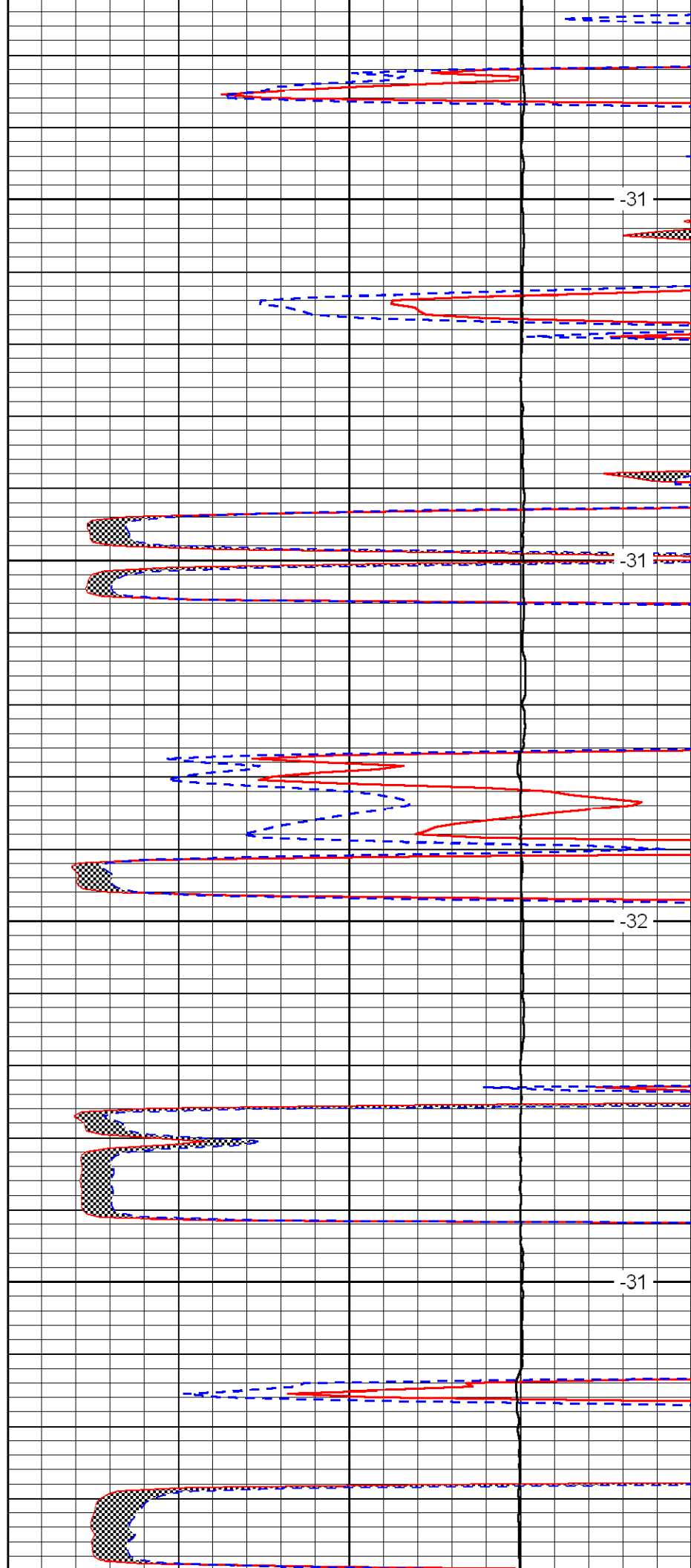


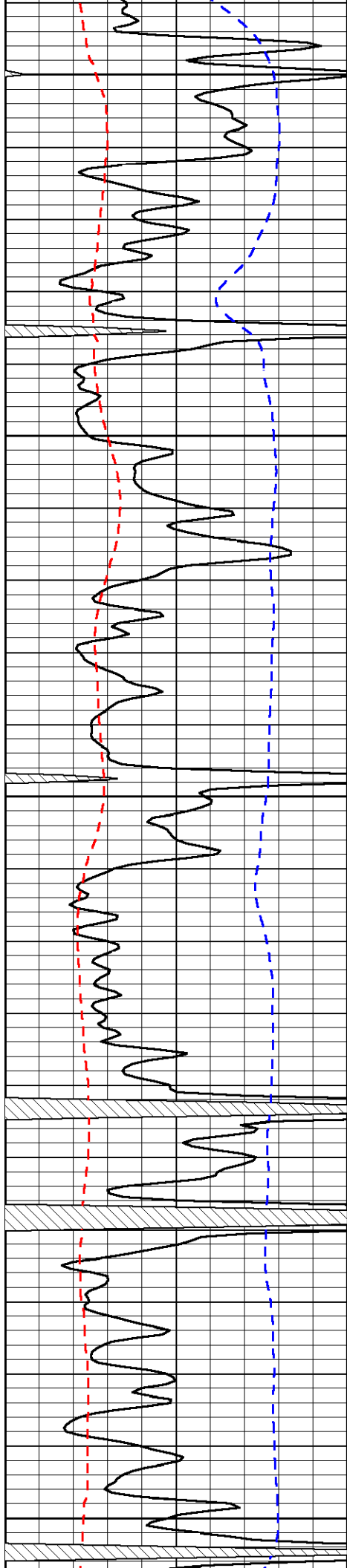
4350

4400

4450

4500





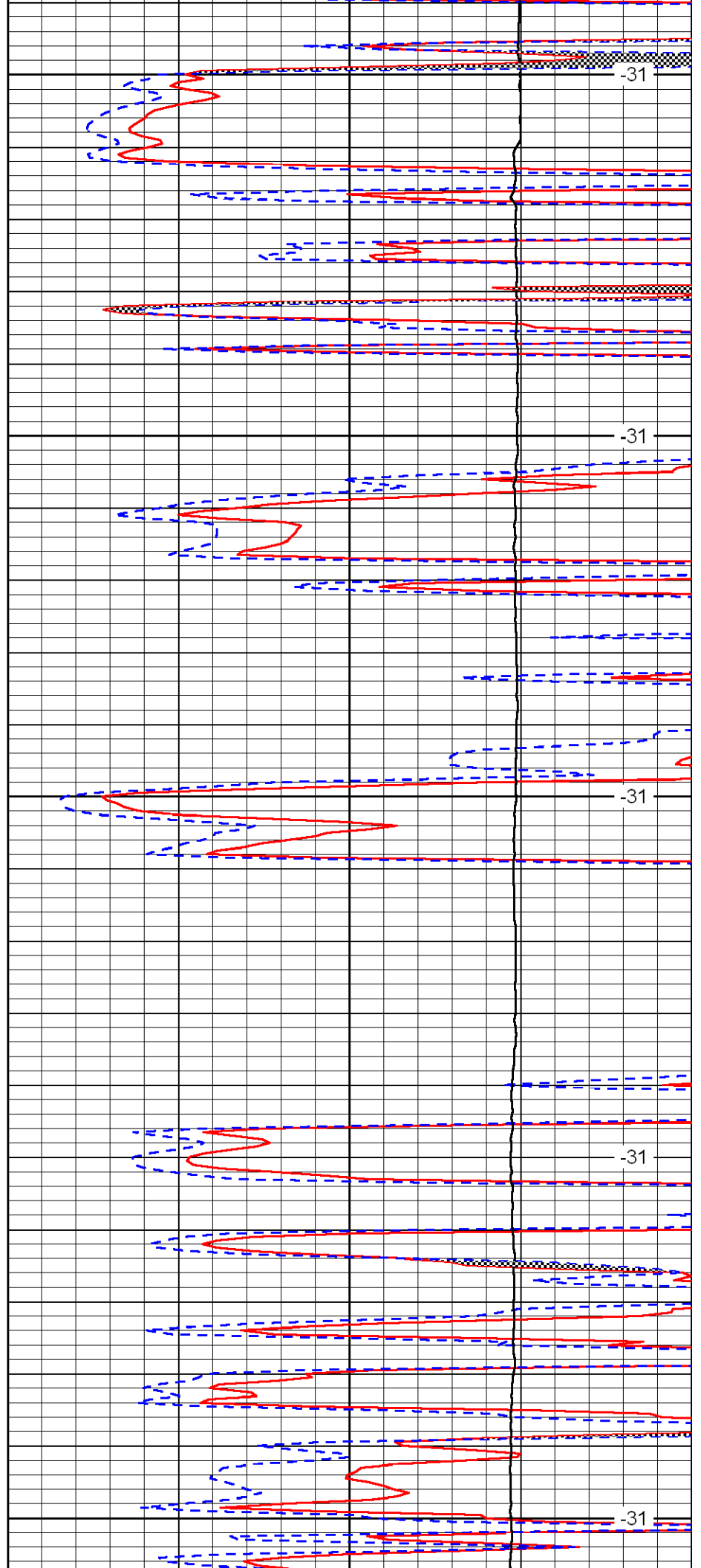
4550

4600

4650

4700

4750



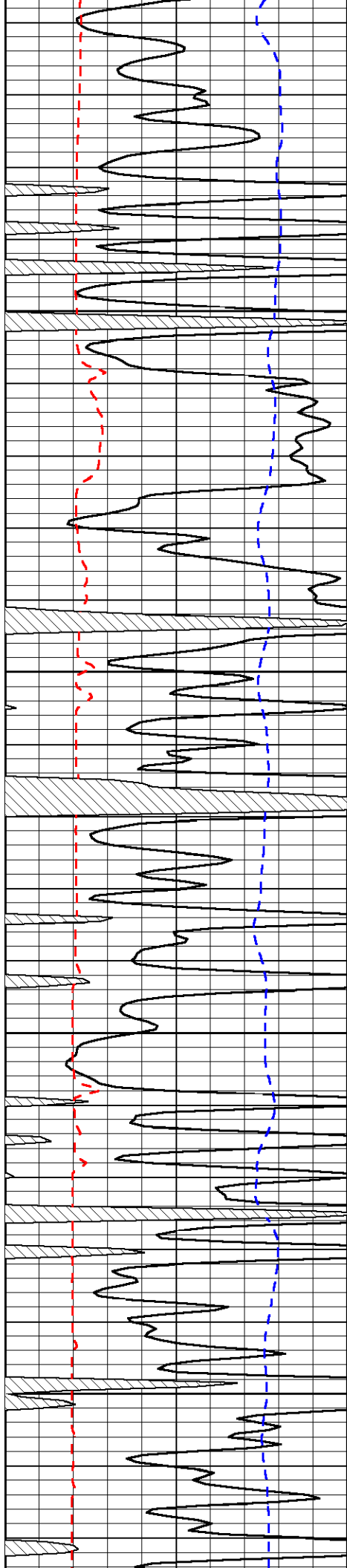
-31

-31

-31

-31

-31

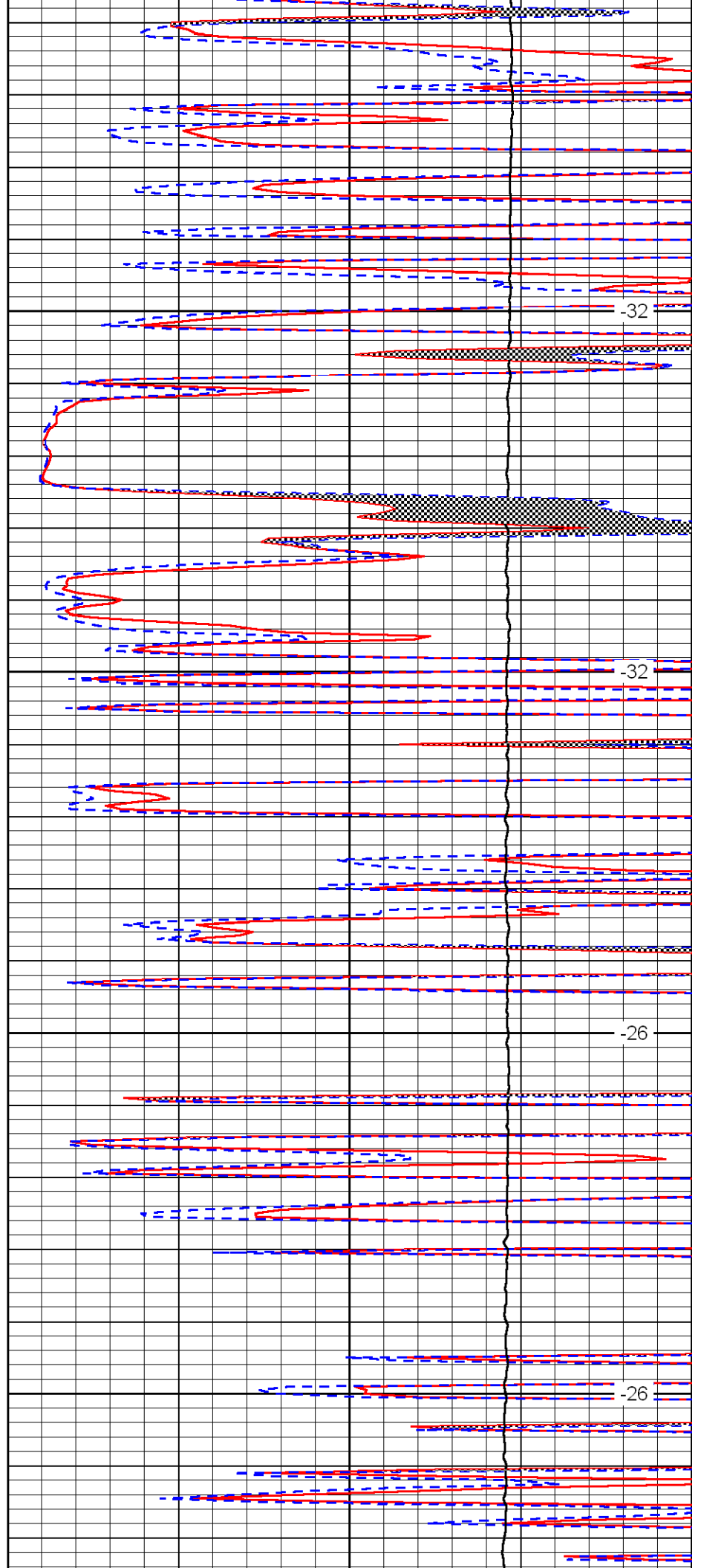


4800

4850

4900

4950

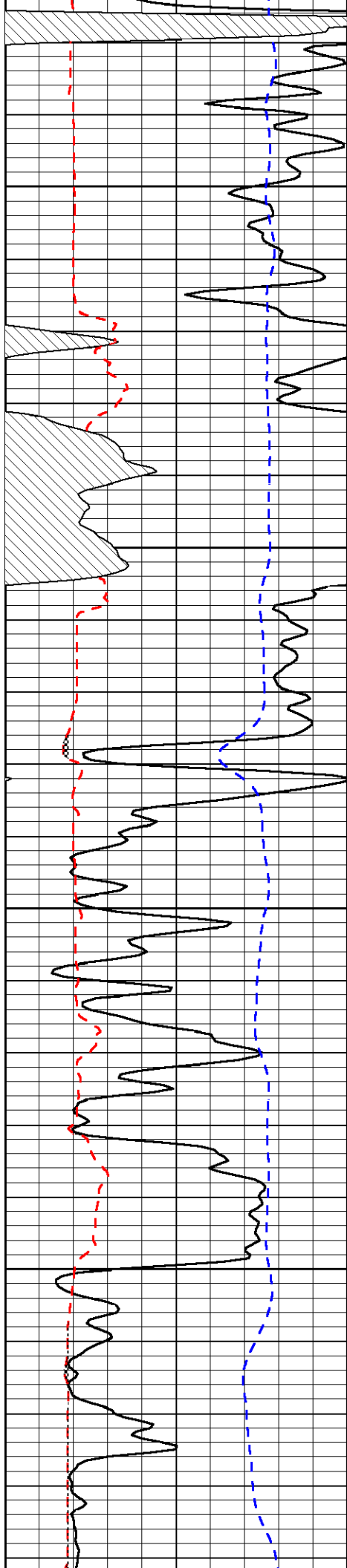


-32

-32

-26

-26

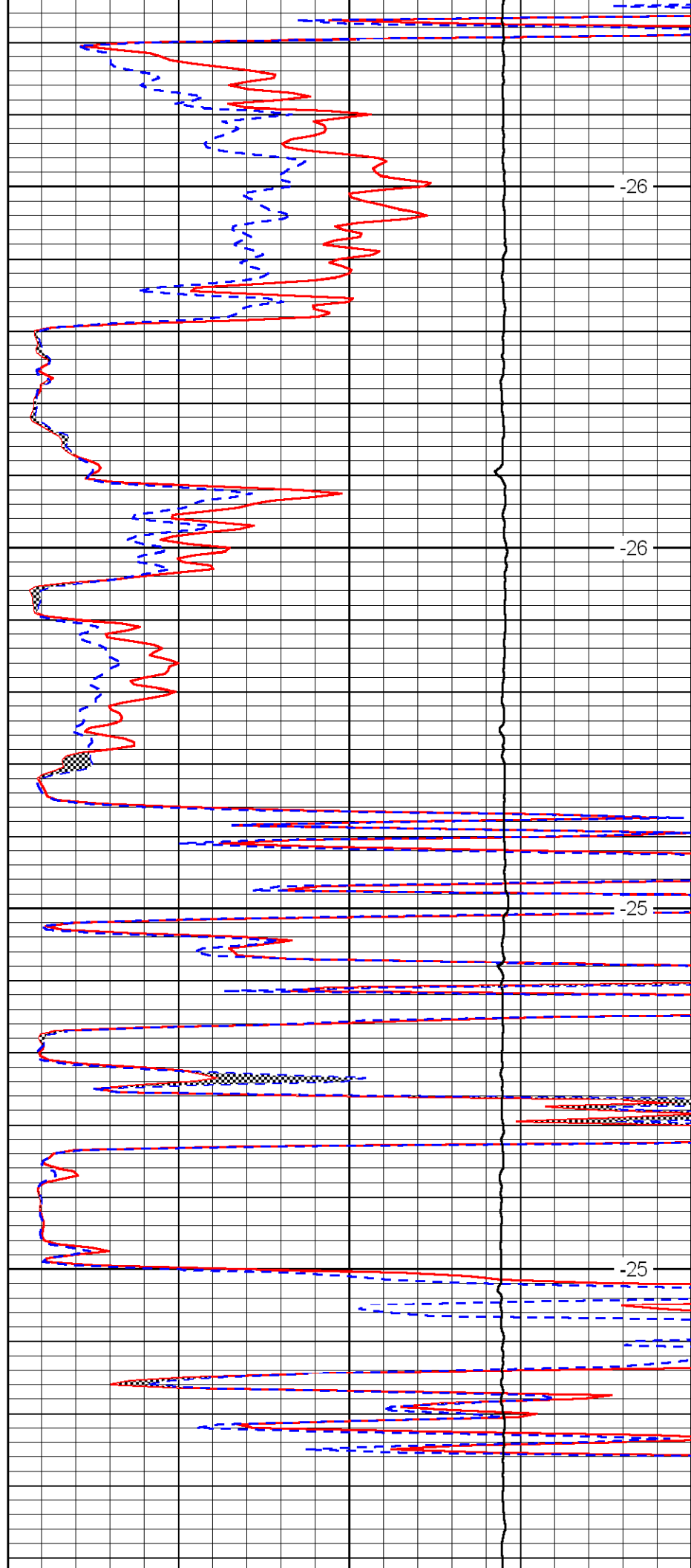


5000

5050

5100

5150

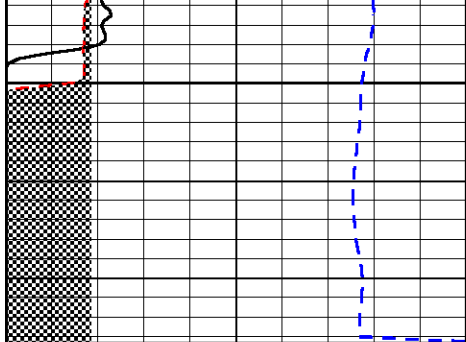


-26

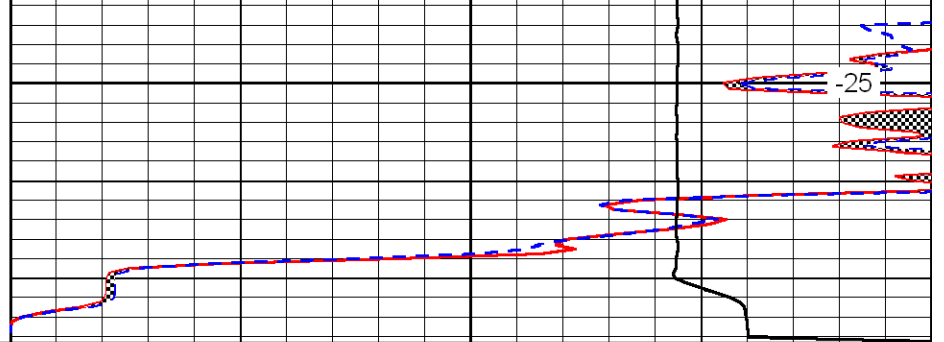
-26

-25

-25



5200



0	Gamma Ray	150
6	Micro Log Caliper (in)	16
-200	SP (MV)	0

0	Micro Inverse 1 X 1 (Ohm-m)	40
0	Micro Normal 2" (Ohm-m)	40
10000	Line Weight (lb)	0

LSPD
(ft/min)