



# Dual Compensated Porosity Log

DIGITAL LOG (785) 625-3858

API No. 15-071-20,873-00-00

Company **Murfin Drilling Company, Inc.**  
 Well **Wright #1-4**  
 Field **Wildcat**  
 County **Greeley** State **Kansas**

Location **NE SW NW  
1900' FSL & 2300' FEL**

Sec: **4** Twp: **17 S** Rge: **42 W**

Other Services  
DIL  
MEL / BHCS

Elevation  
K.B. 3846  
D.F. G.L. 3836

Permanent Datum Ground Level Elevation 3836  
 Log Measured From Kelly Bushing 10 Ft. Above Perm. Datum  
 Drilling Measured From Kelly Bushing

Date 4/10/2009

Run Number One  
 Type Log CNL / CDL  
 Depth Driller 5220  
 Depth Logger 5220  
 Bottom Logged Interval 5199  
 Top Logged Interval 3700  
 Type Fluid In Hole Chemical  
 Salinity, PPM CL 6,500  
 Density 9.4  
 Level Full  
 Max. Rec. Temp. F 130  
 Operating Rig Time 4 1/2 Hours  
 Equipment -- Location 17 Hays  
 Recorded By T. Martin  
 Witnessed By Scott Banks

Borehole Record  
 Run No Bit From To Size Wgt. From To  
 1 12.25 00 310 8.625 24# 00 310  
 2 7.875 310 5220

Casing Record

<<< Fold Here >>>

All interpretations are opinions based on inferences from electrical or other measurements and we cannot and do not guarantee the accuracy or correctness of any interpretation, and we shall not, except in the case of gross or willful negligence on our part, be liable or responsible for any loss, costs, damages, or expenses incurred or sustained by anyone resulting from any interpretation made by any of our officers, agents or employees. These interpretations are also subject to our general terms and conditions set out in our current Price Schedule.

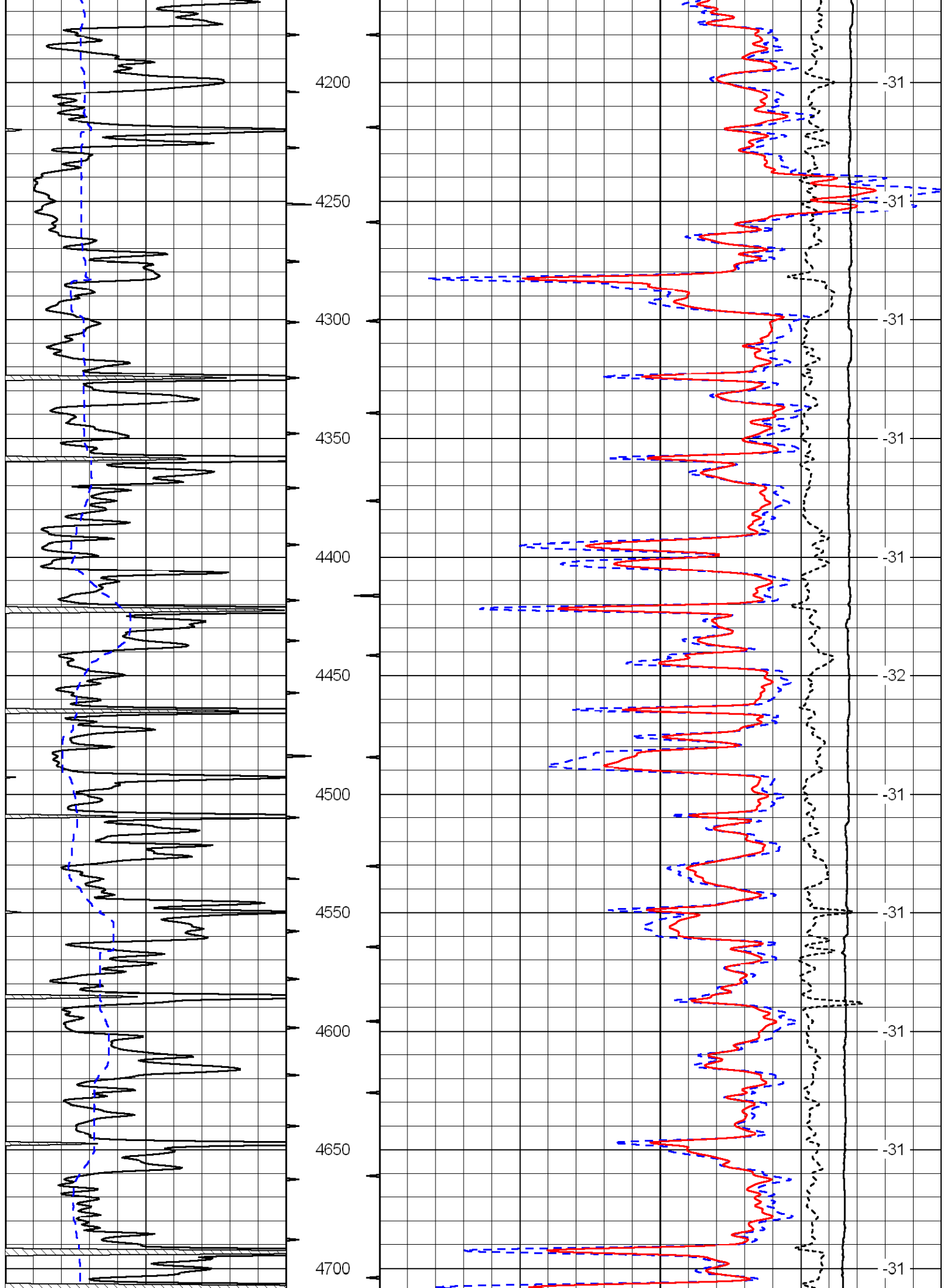
Comments

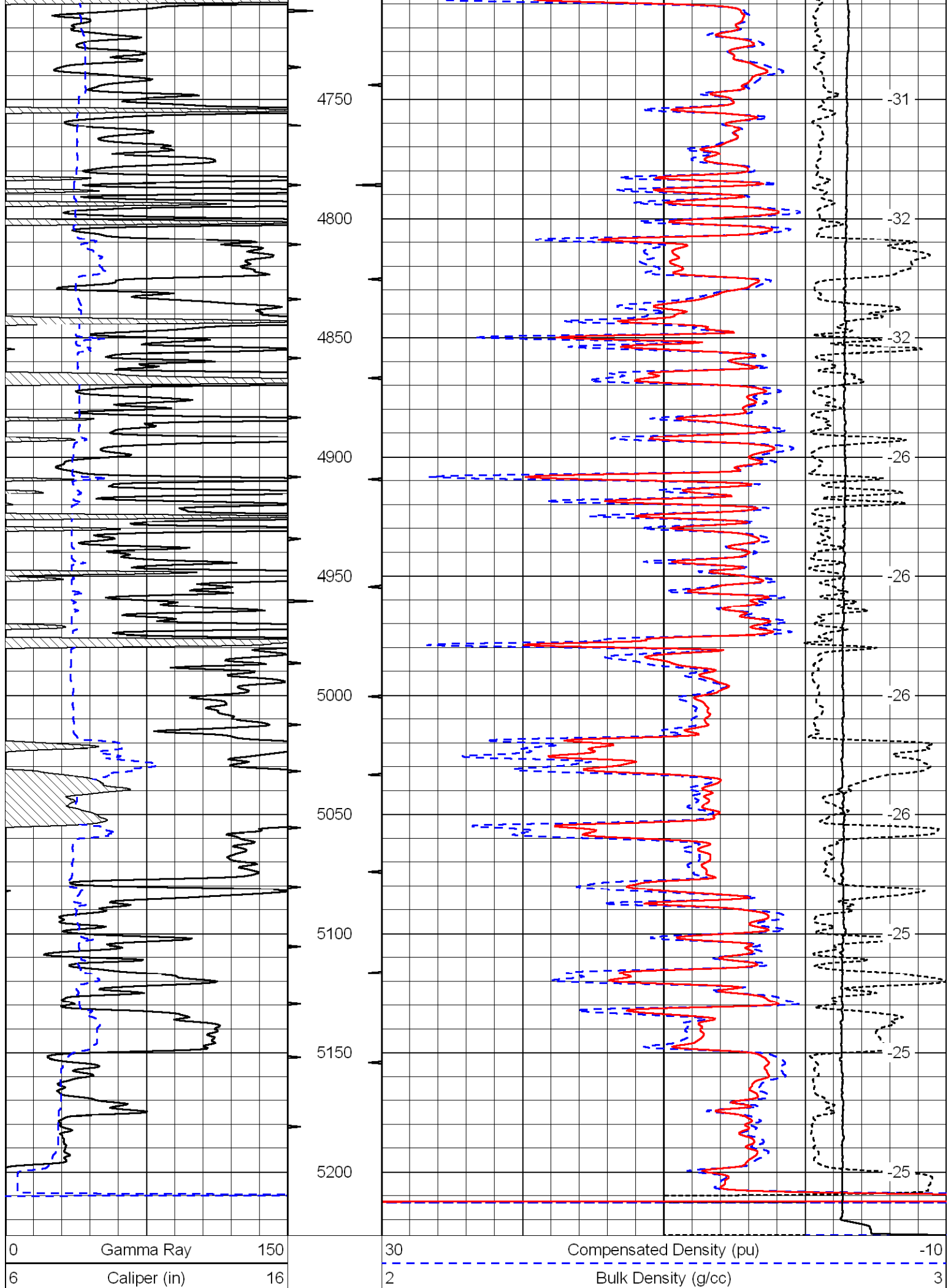
Thank you for using Log-Tech, Inc.  
 (785) 625-3858

Sharon Springs, 17 S (Btwn MM 123 & 122).  
 11 W, 3 1/2 S, W Into

Database File: c:\warrior\data\murfin\_wright #1-4\mfndb.db  
 Dataset Pathname: dil/mfnstk  
 Presentation Format: cdl  
 Dataset Creation: Fri Apr 10 19:04:10 2009  
 Charted by: Depth in Feet scaled 1:600







15000

Line Tension (lb)

0

-0.25

Correction (g/cc)

0.25

LSPD

(ft/min)

Database File: c:\warrior\data\murfin\_wright #1-4\mfnhd.db  
 Dataset Pathname: dil/mfnstk  
 Presentation Format: cndlspec  
 Dataset Creation: Fri Apr 10 19:04:10 2009  
 Charted by: Depth in Feet scaled 1:240

0	Gamma Ray	150
6	Caliper (in)	16

30	Compensated Neutron (Limestone) (pu)	-10
30	Compensated Density (2.71 ma) (pu)	-10
15000	Line Tension (lb)	0

-0.25

Correction (g/cc)

0.25

LSPD

(ft/min)

