



**Borehole Compensated
Sonic Log**

DIGITAL LOG (785) 625-3858

API No.	API 15-193-20,760-00-00		
Company	Russell Oil, Inc.		
Well	SK No. 1-13		
Field	Wildcat		
County	Thomas		State Kansas
Location	W2 NE NW SE 2,310' FSL & 1,940' FEL		
Sec: 13	Twp: 10S	Rge: 31W	Other Services RAG MEL
Permanent Datum	Ground Level	Elevation 2938	Elevation
Log Measured From	Kelly Bushing	10 Ft. Above Perm. Datum	K.B. 2948
Drilling Measured From	Kelly Bushing		D.F. 2938
			G.L. 2938

Date	4/1/2009						
Run Number	Two						
Type Log	BHC Sonic						
Depth Driller	4600						
Depth Logger	4596						
Bottom Logged Interval	4585						
Top Logged Interval	200						
Type Fluid In Hole	Chemical						
Salinity, PPM CL	1200						
Density	9.4						
Level	Full						
Max. Rec. Temp. F	124						
Operating Rig Time	4 Hours						
Equipment -- Location	17	Hays					
Recorded By	J. Long						
Witnessed By	Steve Angle	Kevin Bailey					
Borehole Record		Casing Record					
Run No	Bit	From	To	Size	Wgt.	From	To
One	12.25	00	224	8.625	23#	00	224
Two	7.875	224	TD				

<<< Fold Here >>>

All interpretations are opinions based on inferences from electrical or other measurements and we cannot and do not guarantee the accuracy or correctness of any interpretation, and we shall not, except in the case of gross or willful negligence on our part, be liable or responsible for any loss, costs, damages, or expenses incurred or sustained by anyone resulting from any interpretation made by any of our officers, agents or employees. These interpretations are also subject to our general terms and conditions set out in our current Price Schedule.

Comments

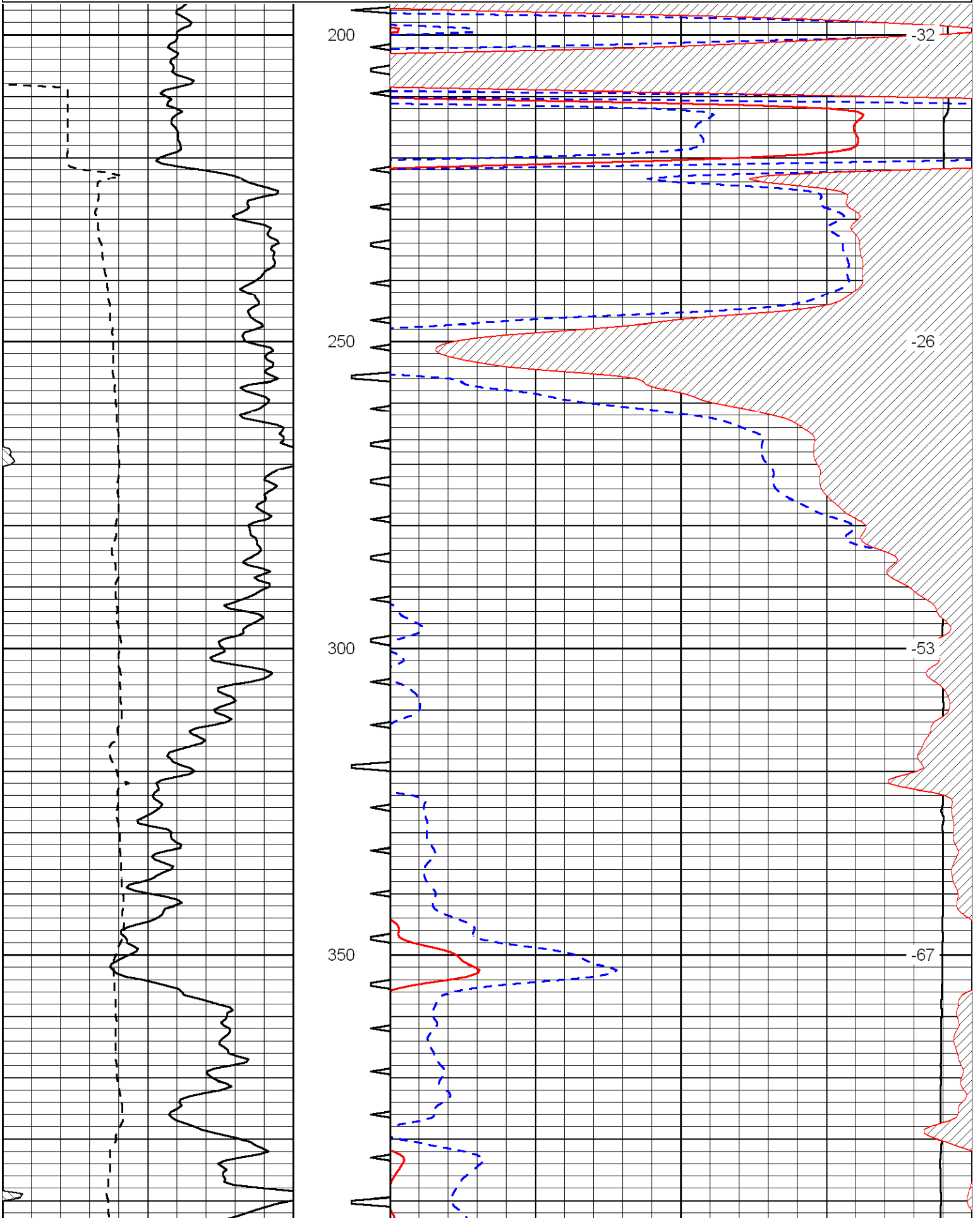
Thank you for using Log-Tech, Inc.
(785) 625-3858

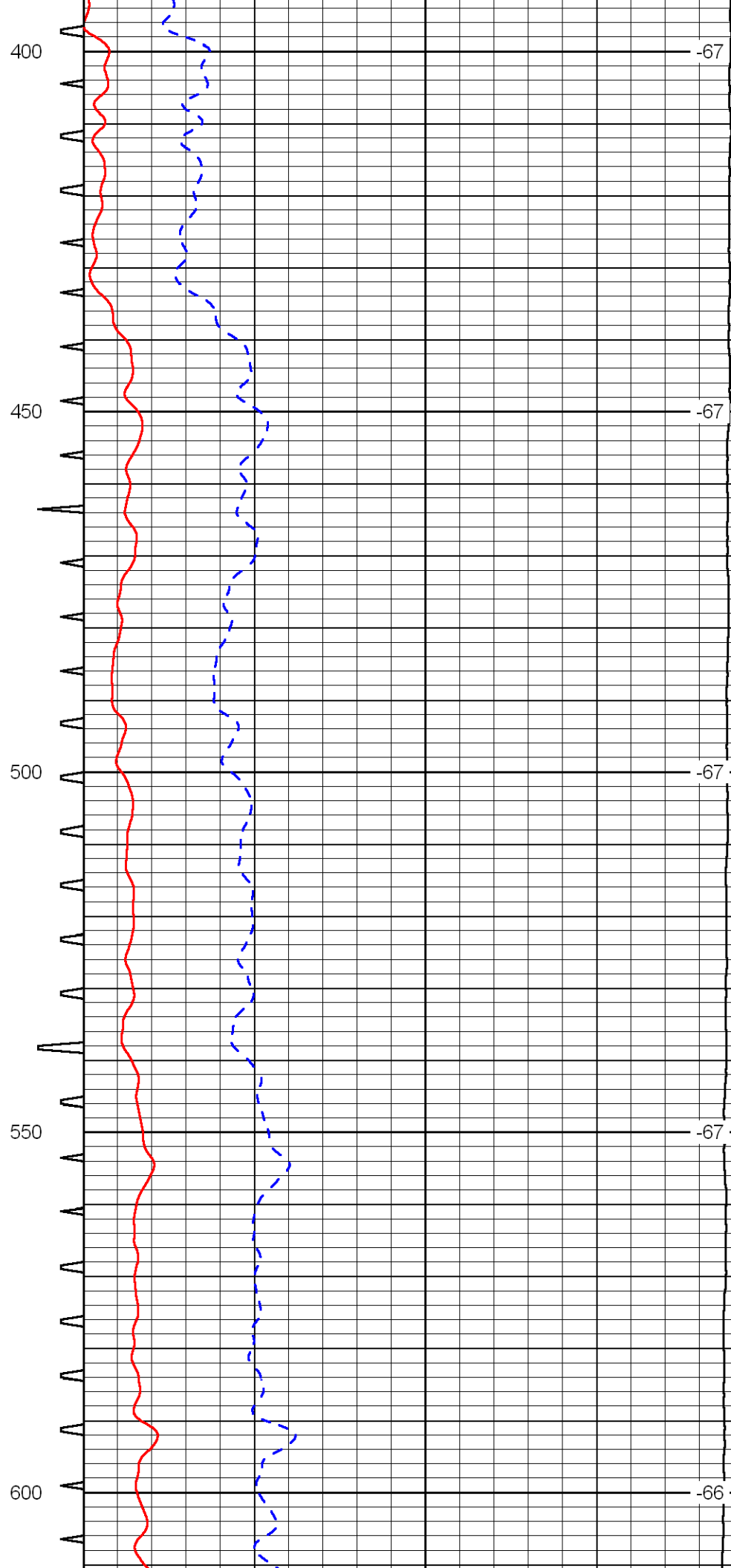
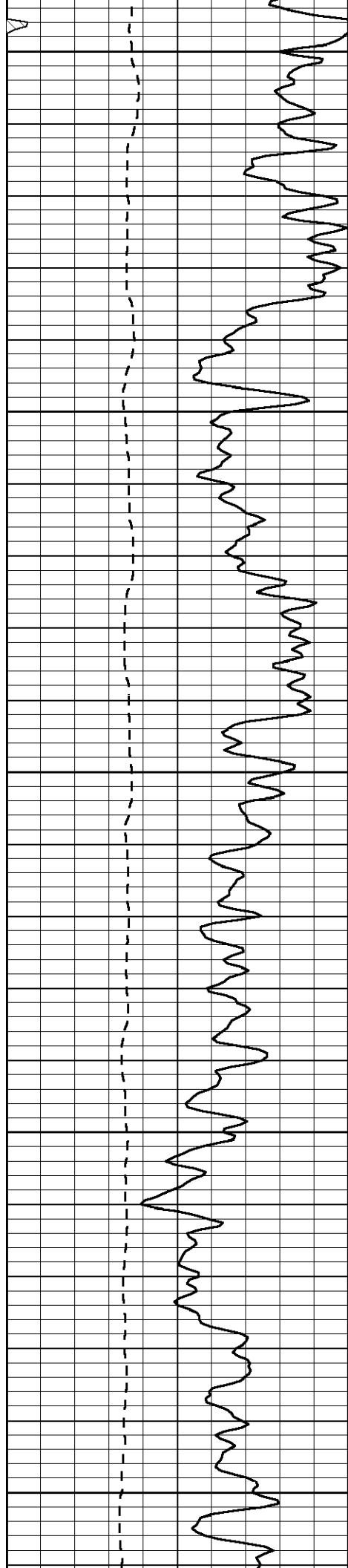
I-70 & Campus Rd, 5 N to D Rd, 1/2 E, N Into

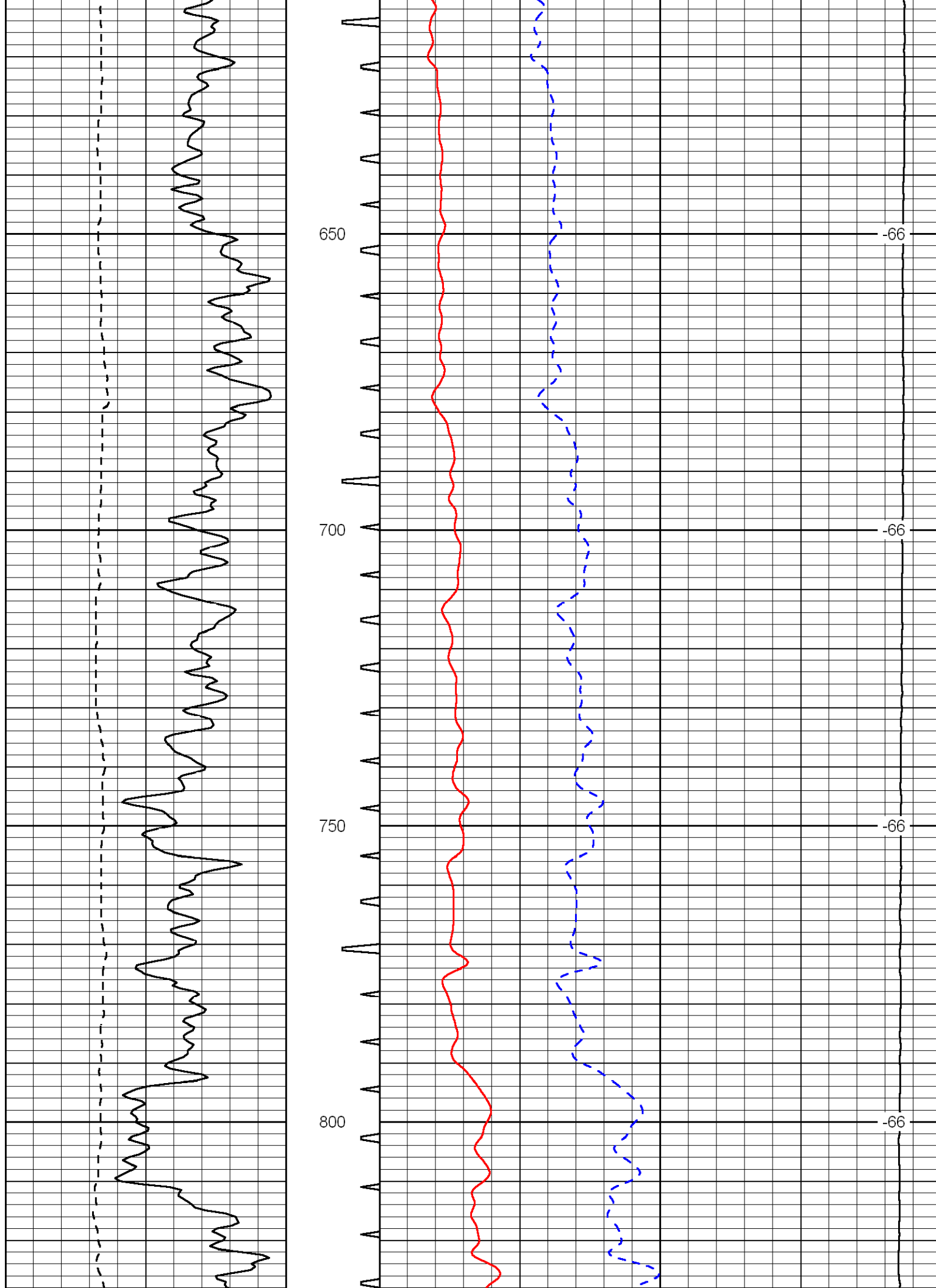
Database File: russellhd.db
 Dataset Pathname: rag/rsslrg2
 Presentation Format: sonic
 Dataset Creation: Wed Apr 01 07:33:50 2009
 Charted by: Depth in Feet scaled 1:240

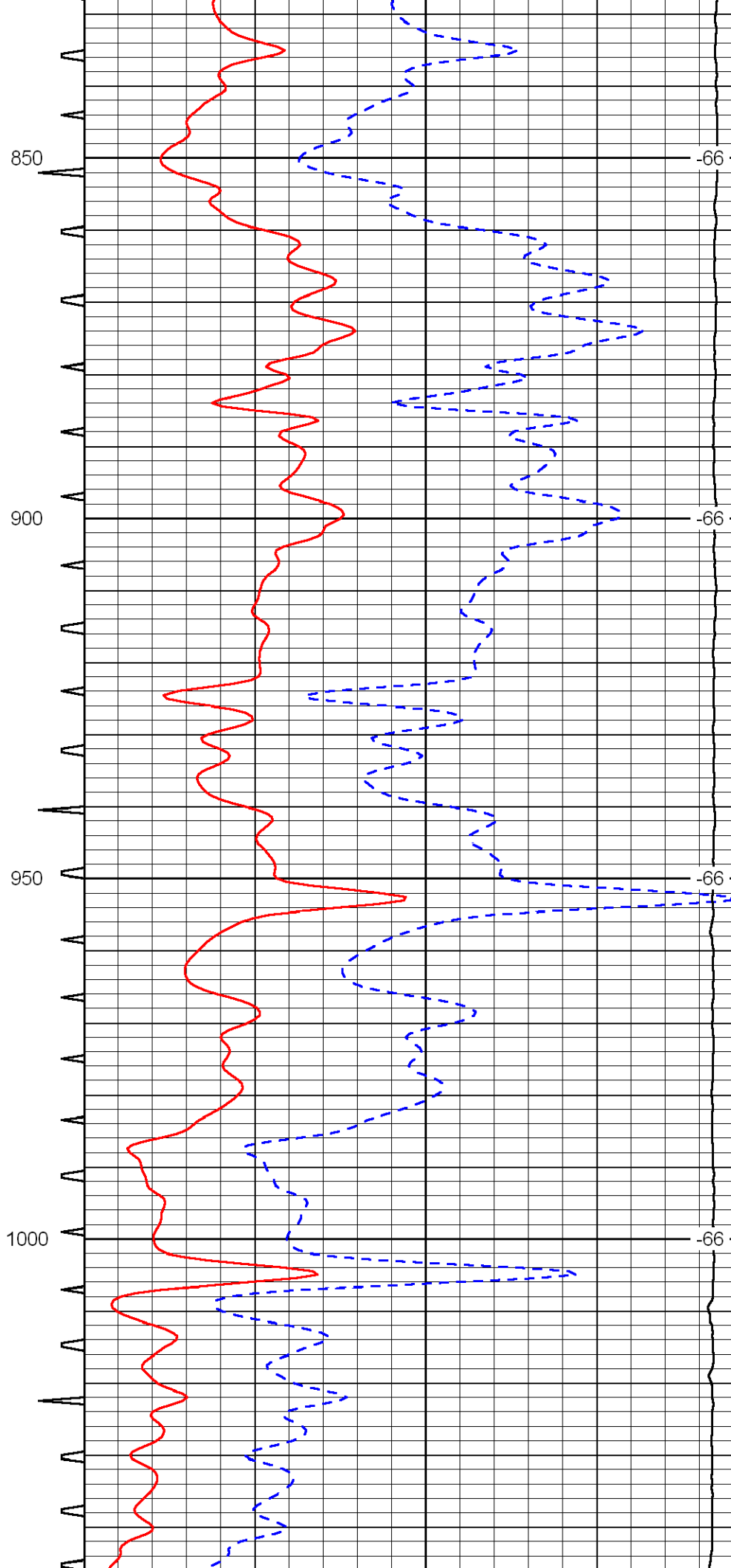
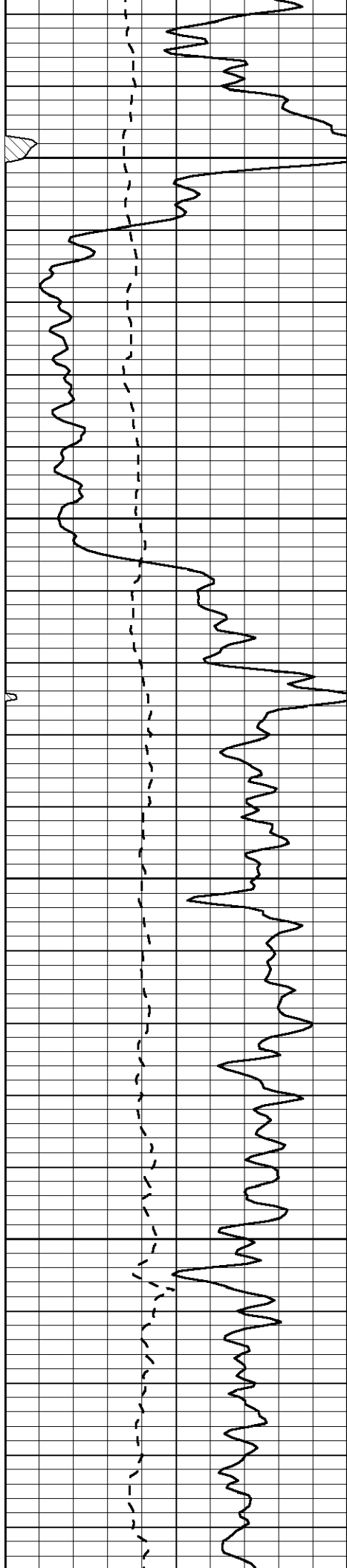
0	Gamma Ray	150	Sonic Int	140	Delta Time (usec/ft)	40
150	Gamma Ray	300	5	0	Sonic Porosity (Limestone)	-10
6	Caliper (GAPI)	16		10000	LTEN (lb)	0

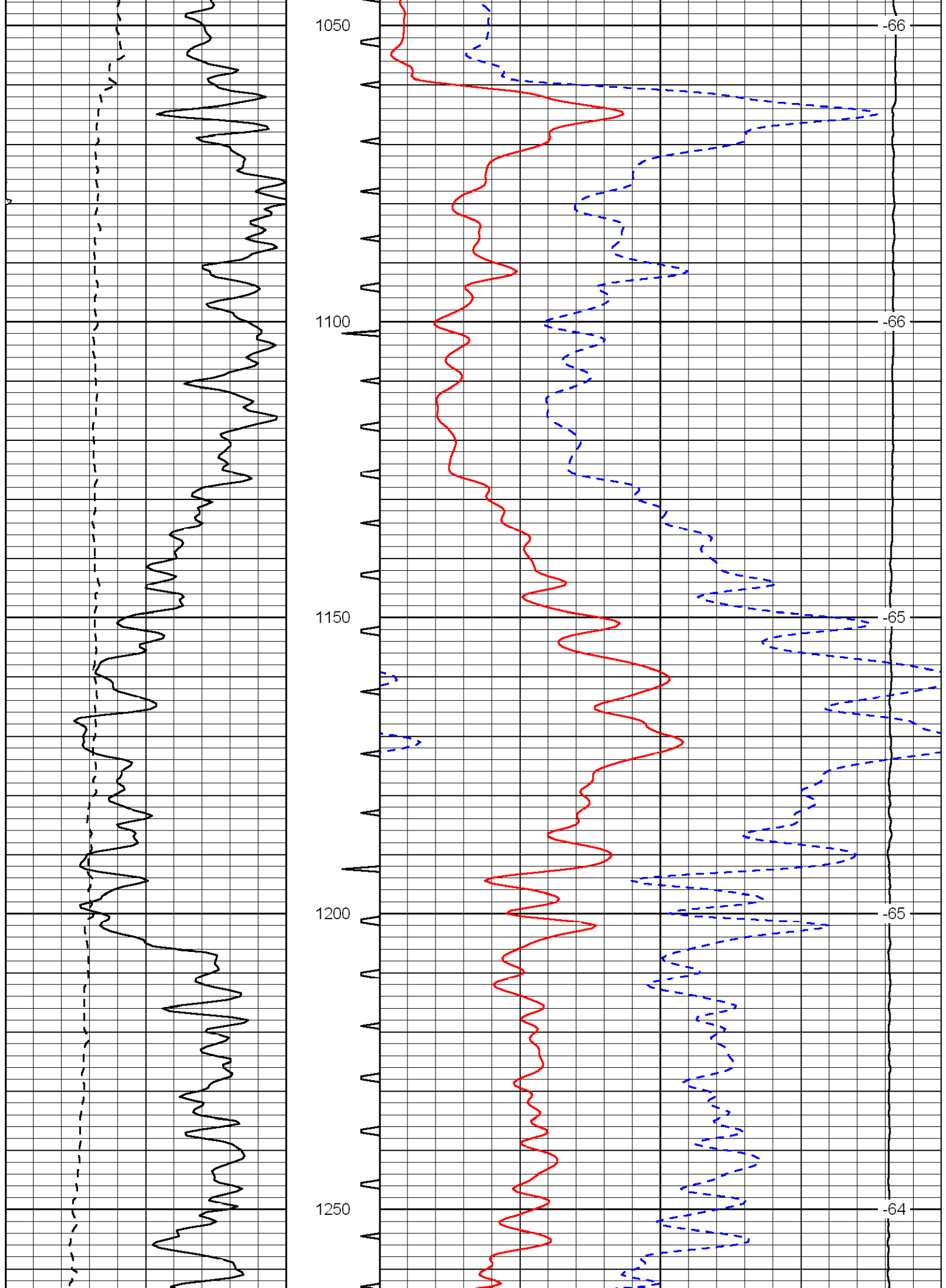
LSPD

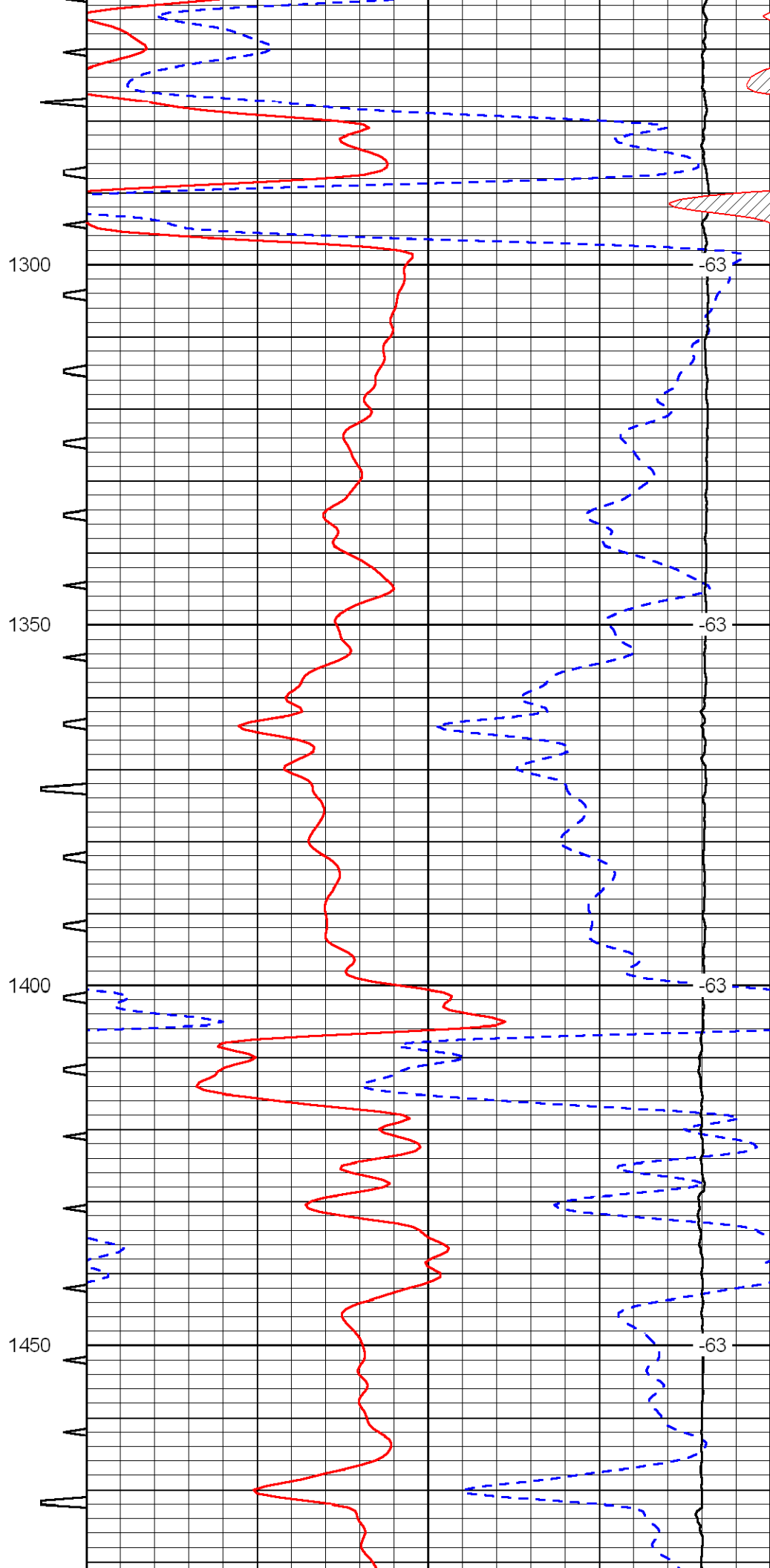
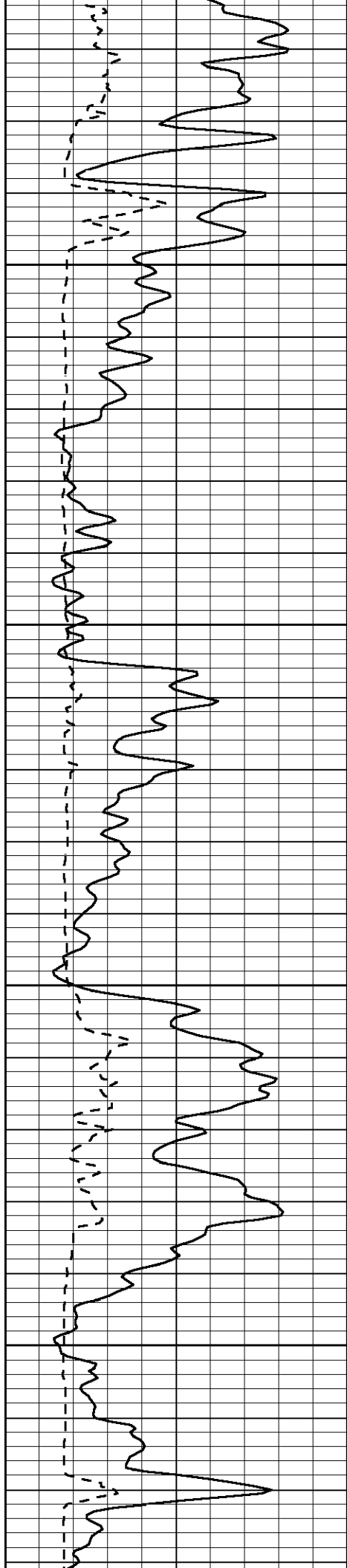


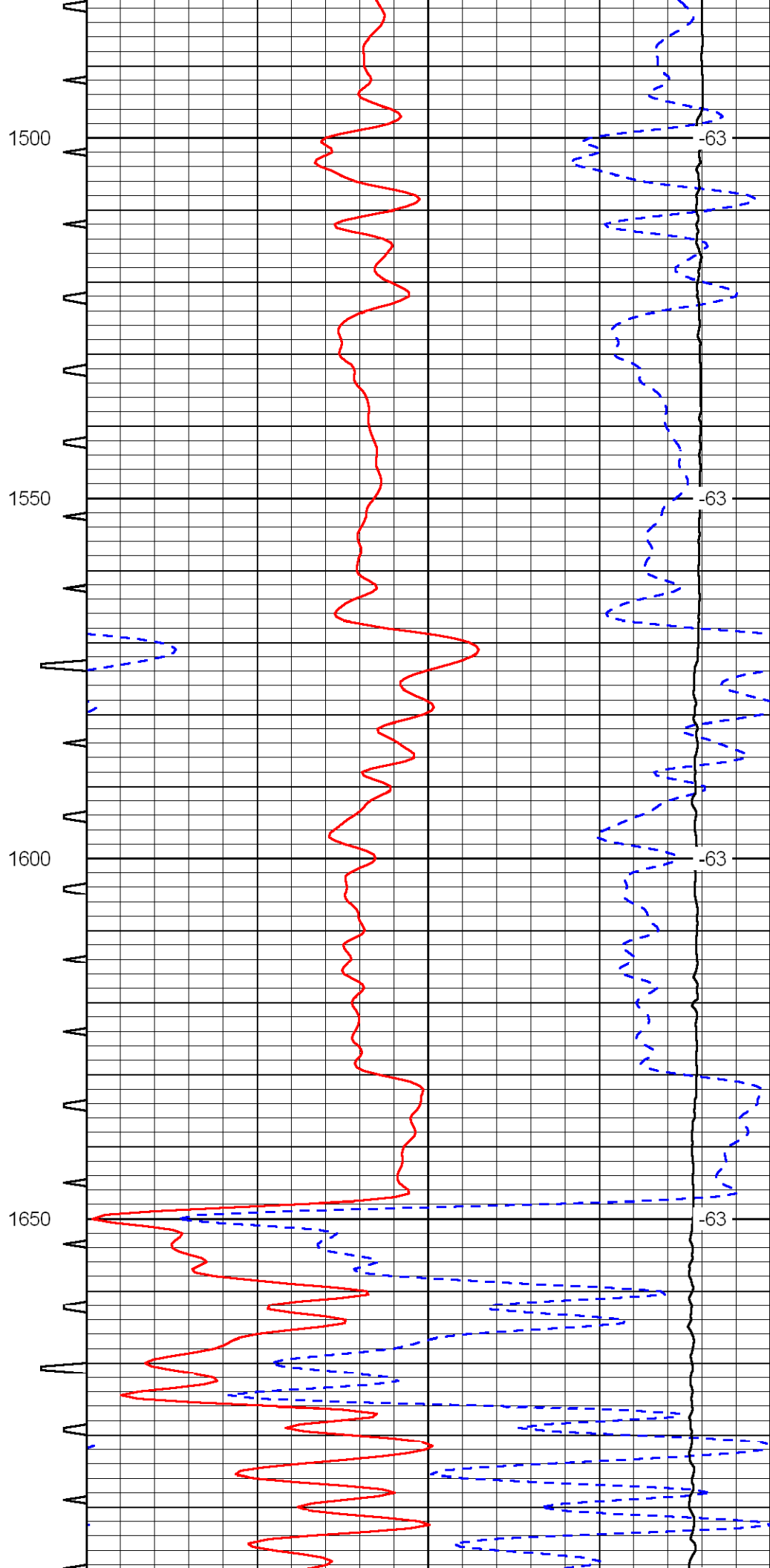
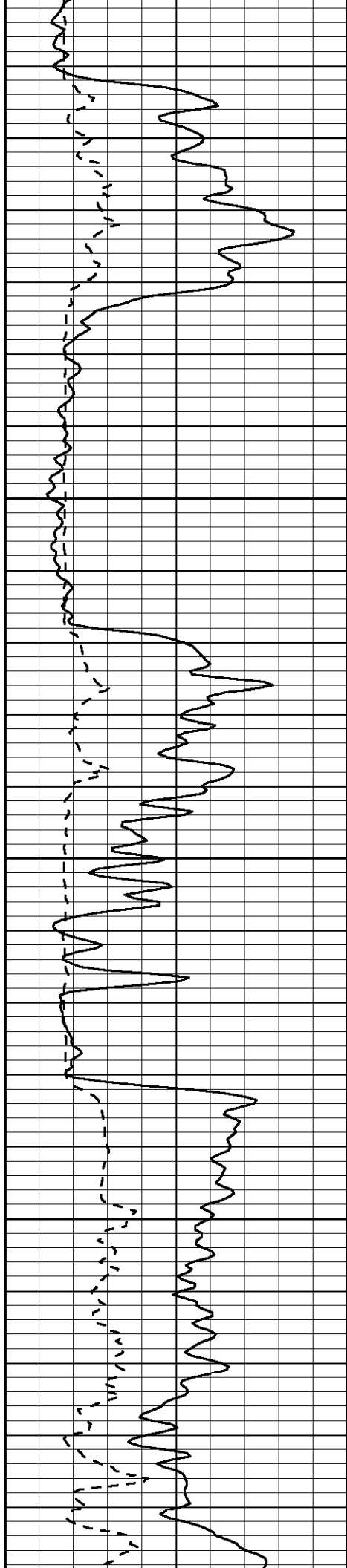


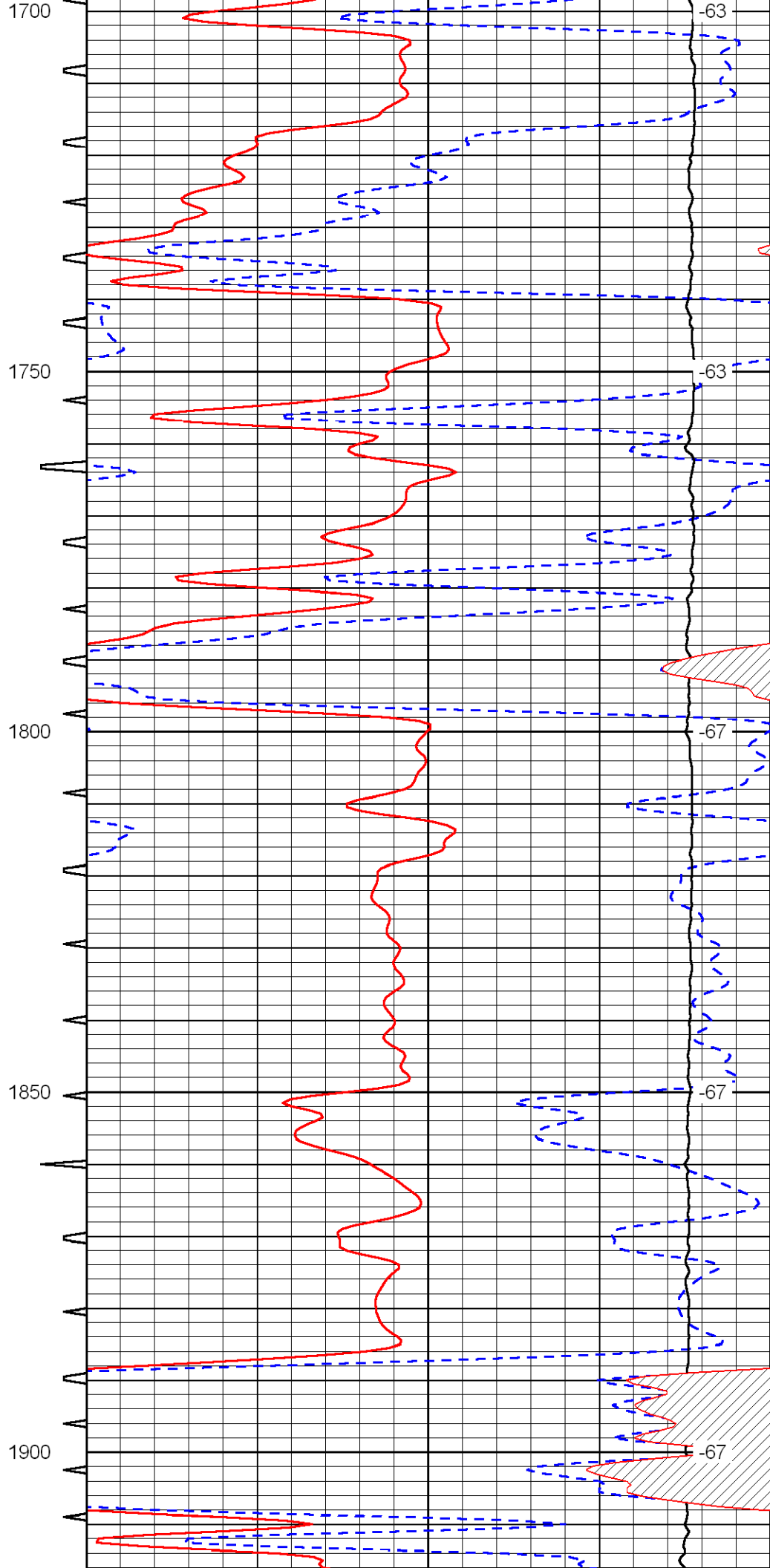
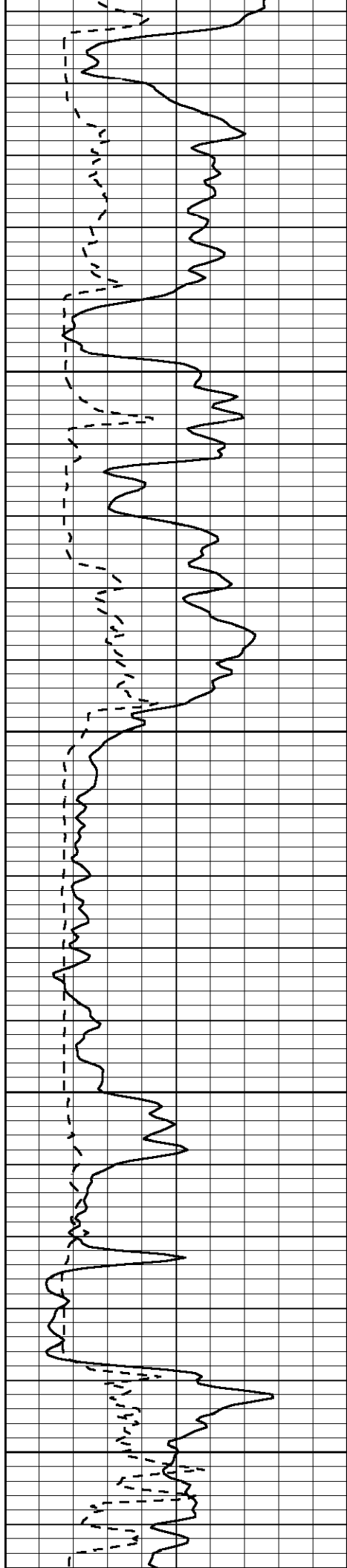


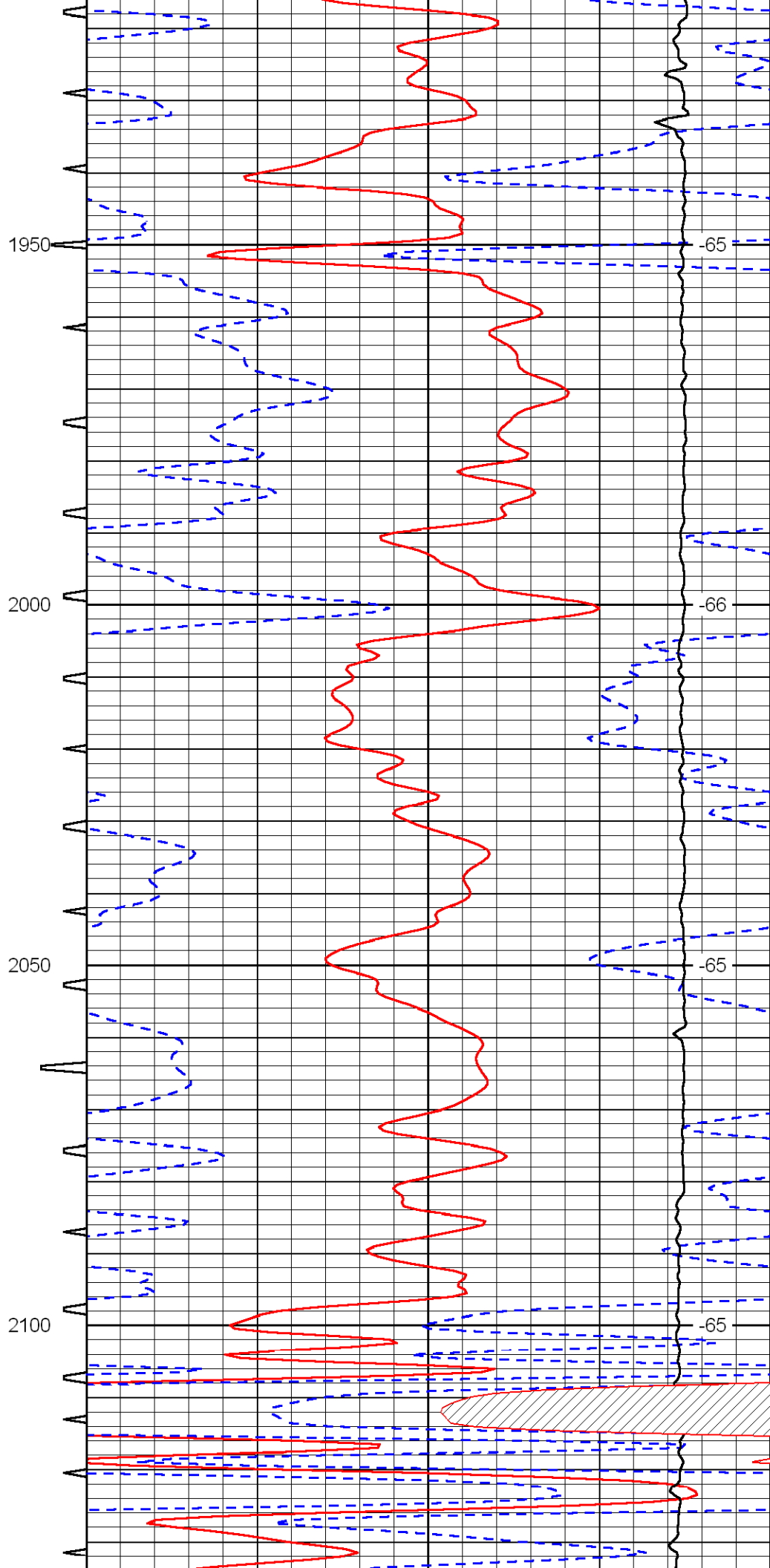
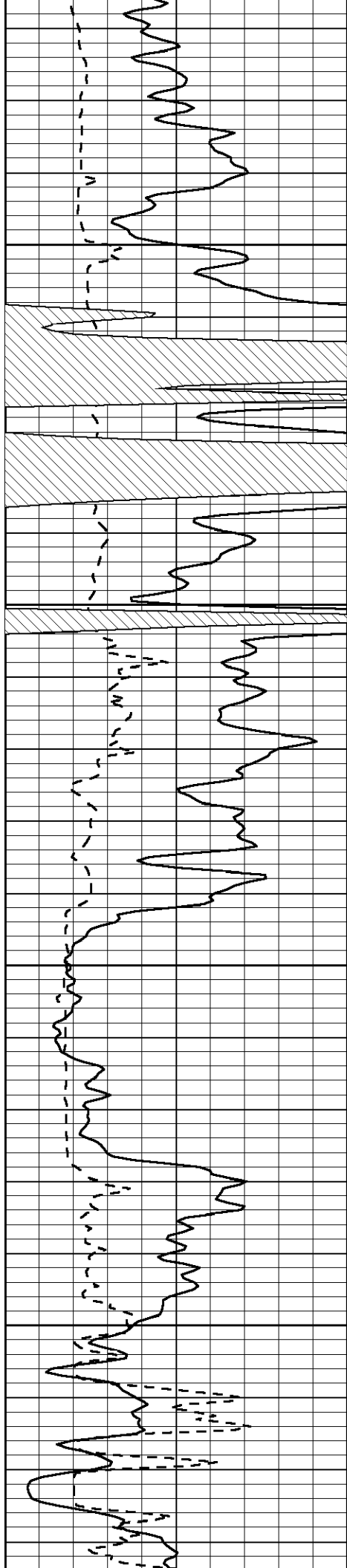


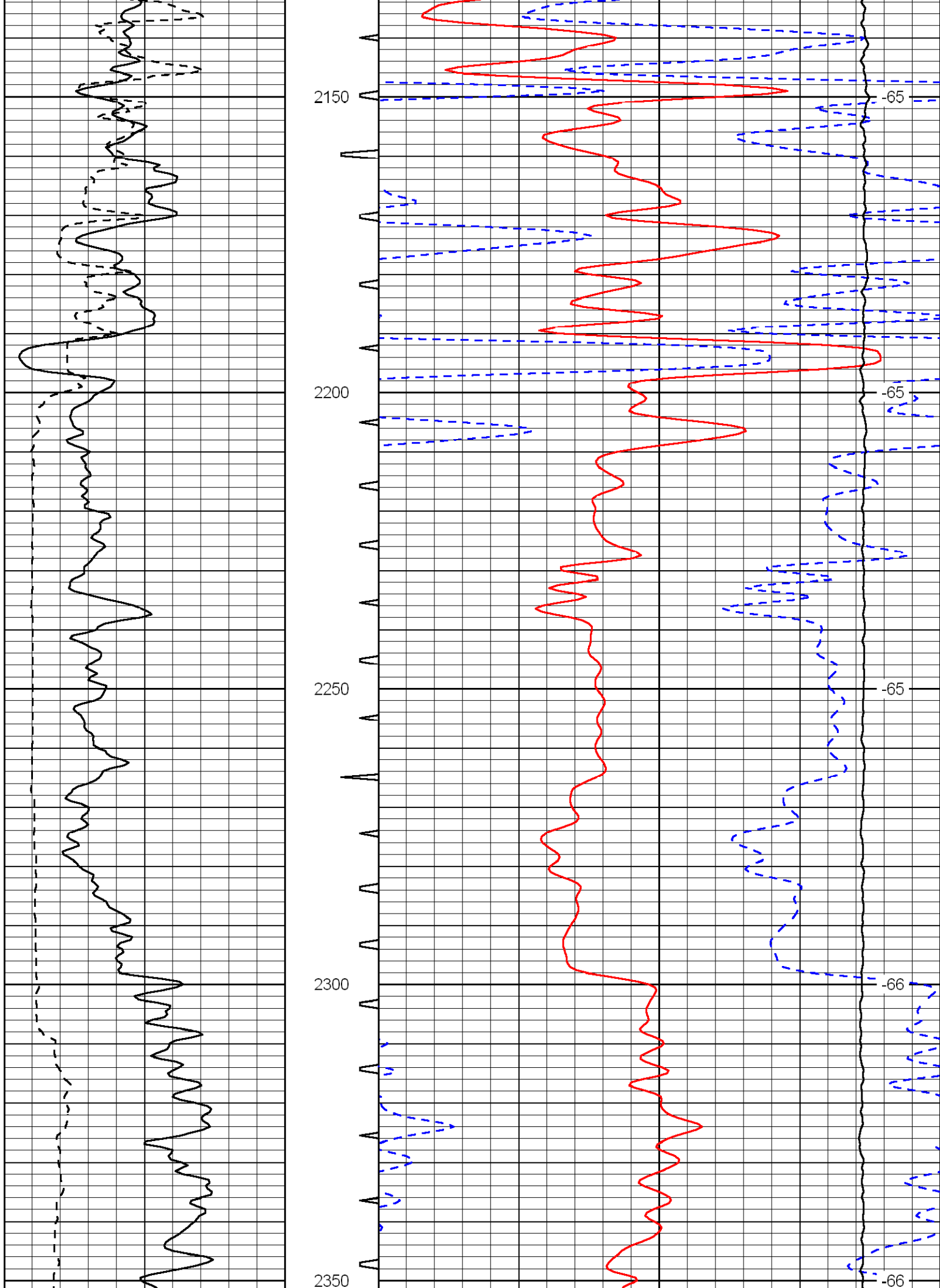


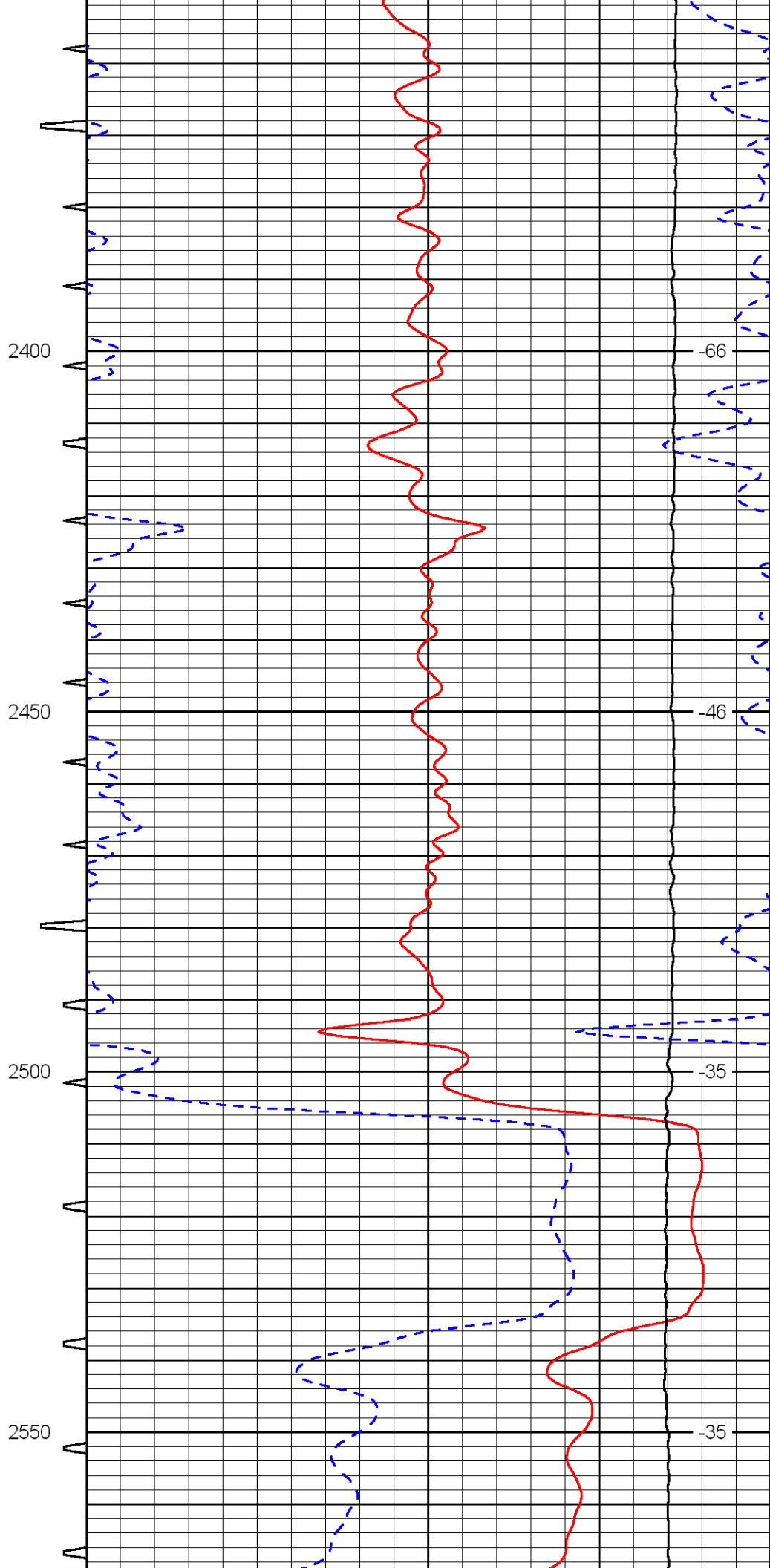
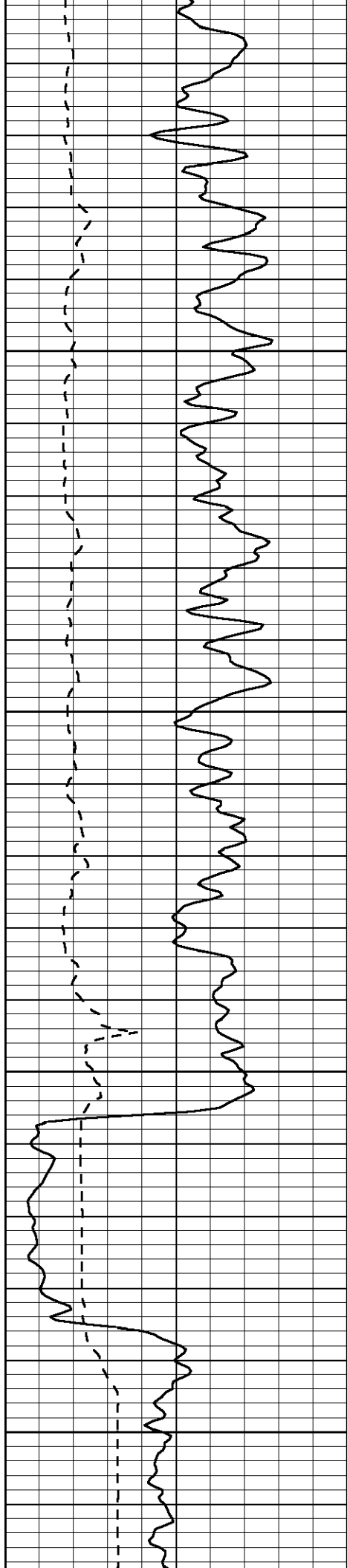


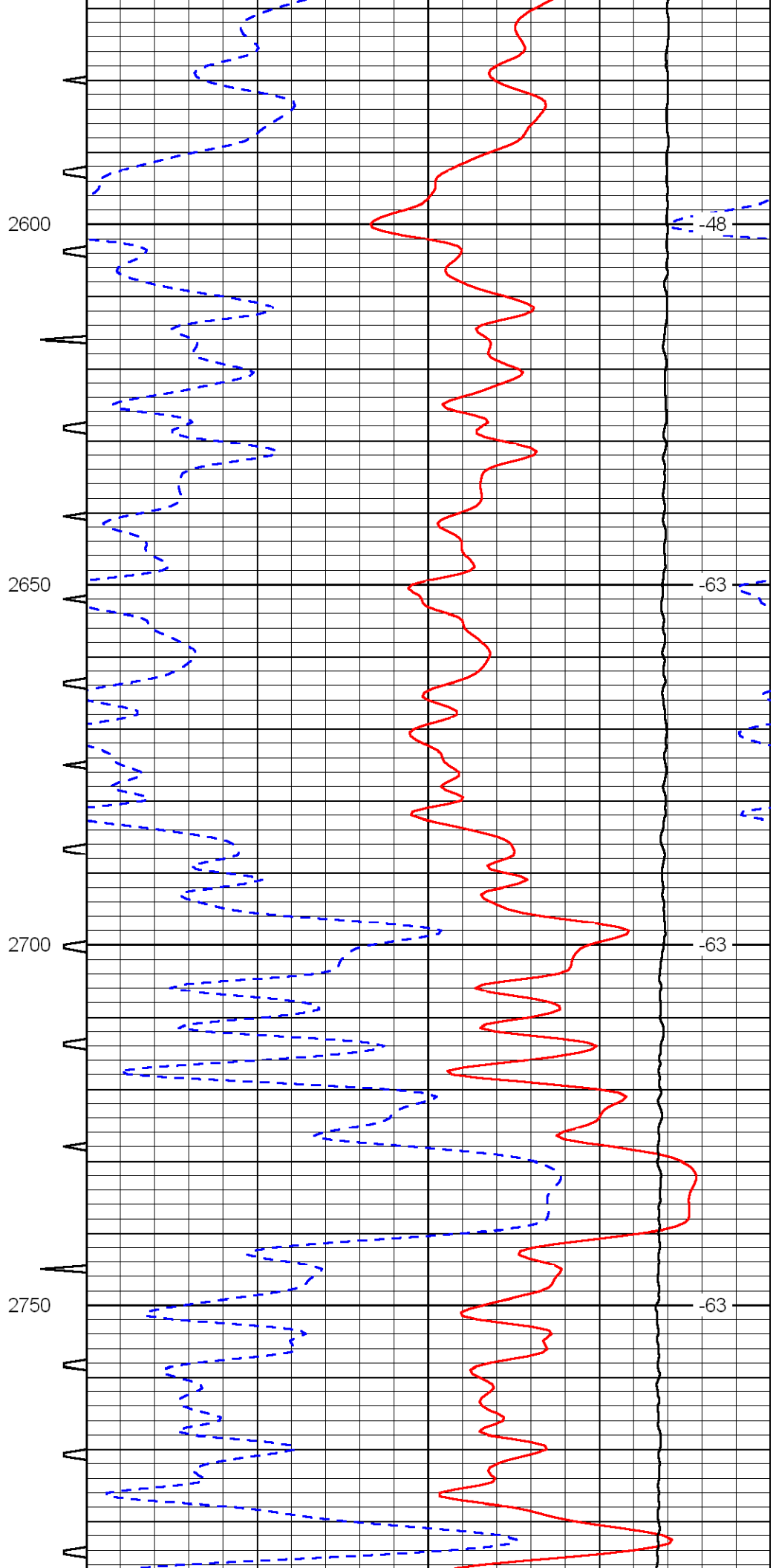
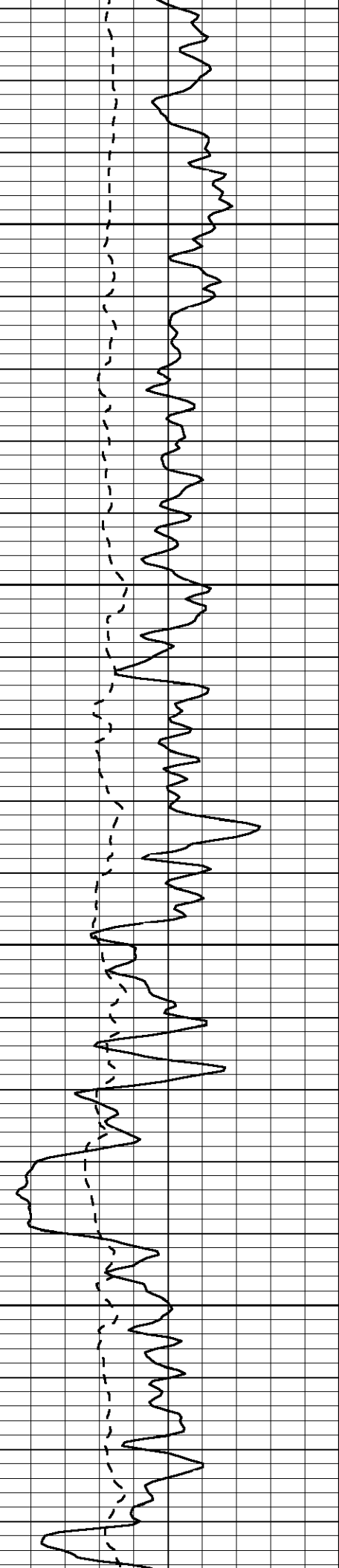


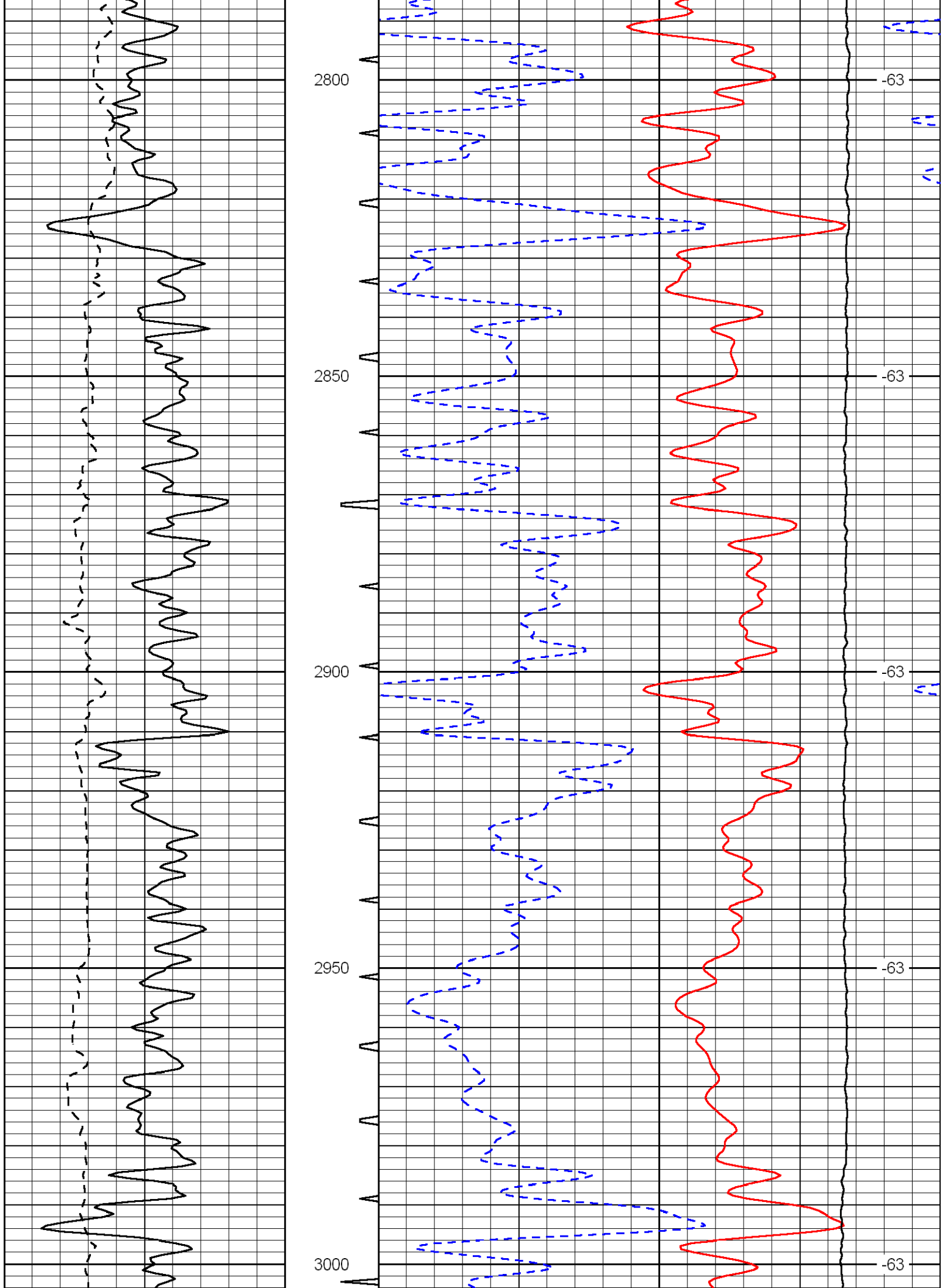


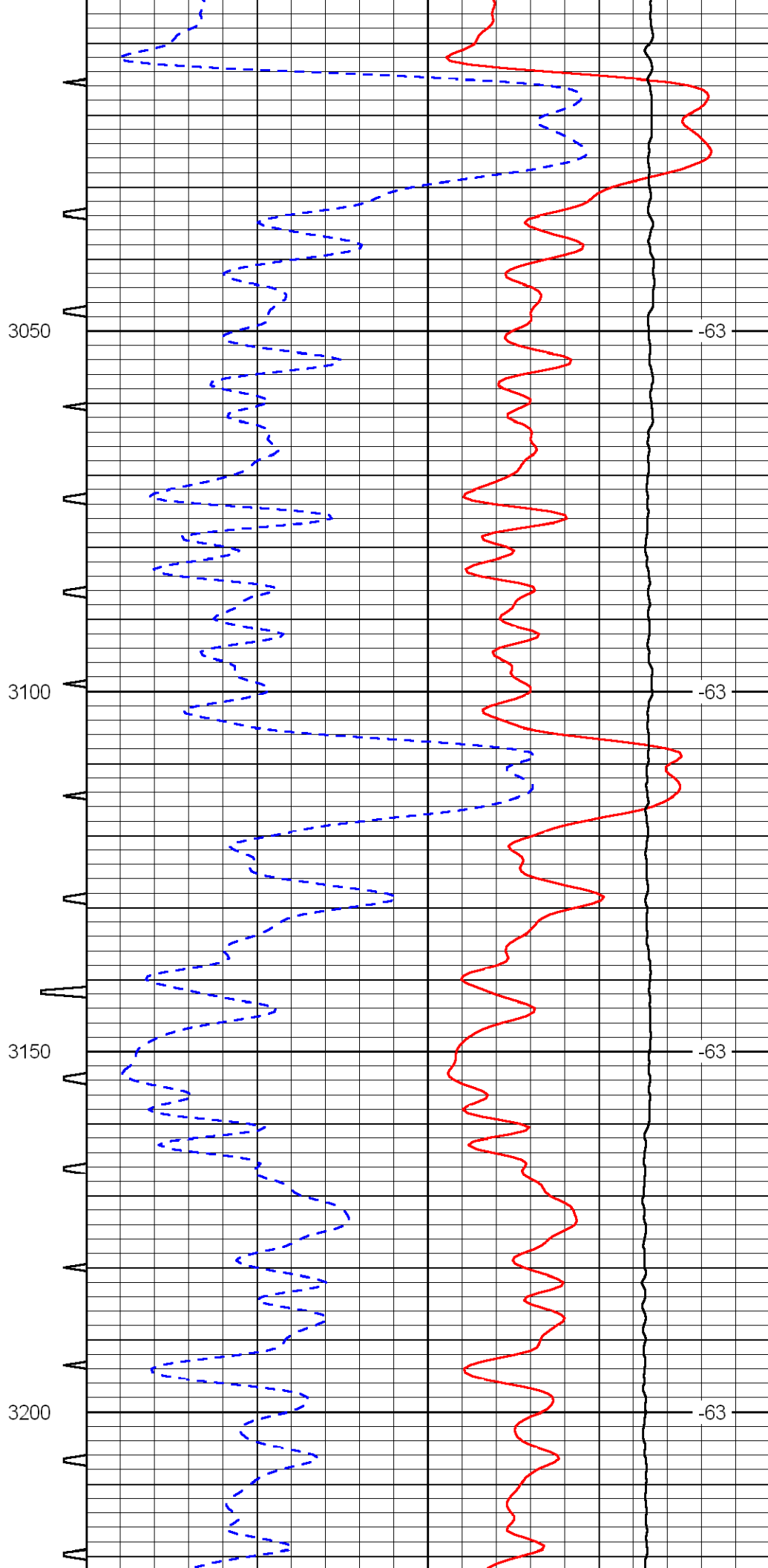
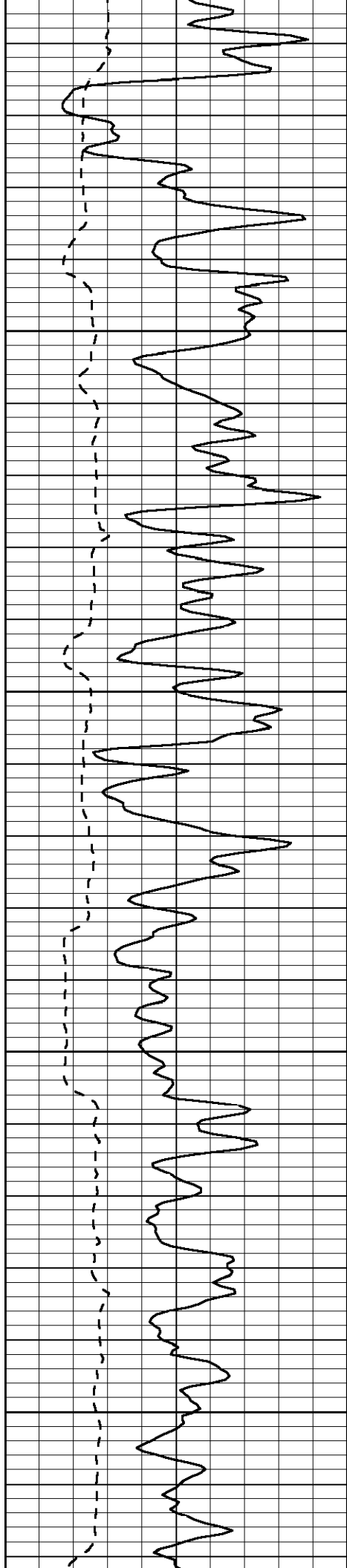












3050

-63

3100

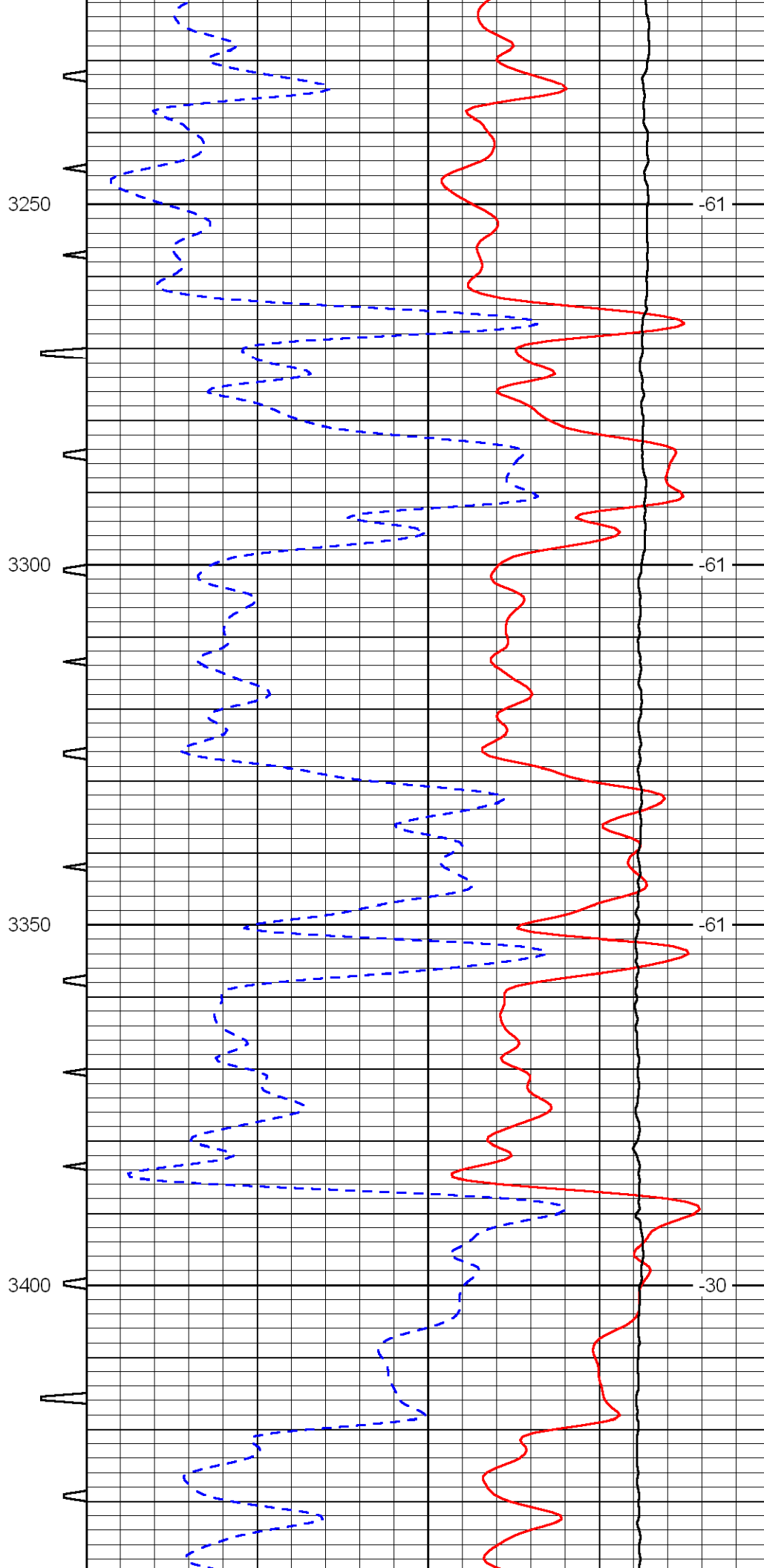
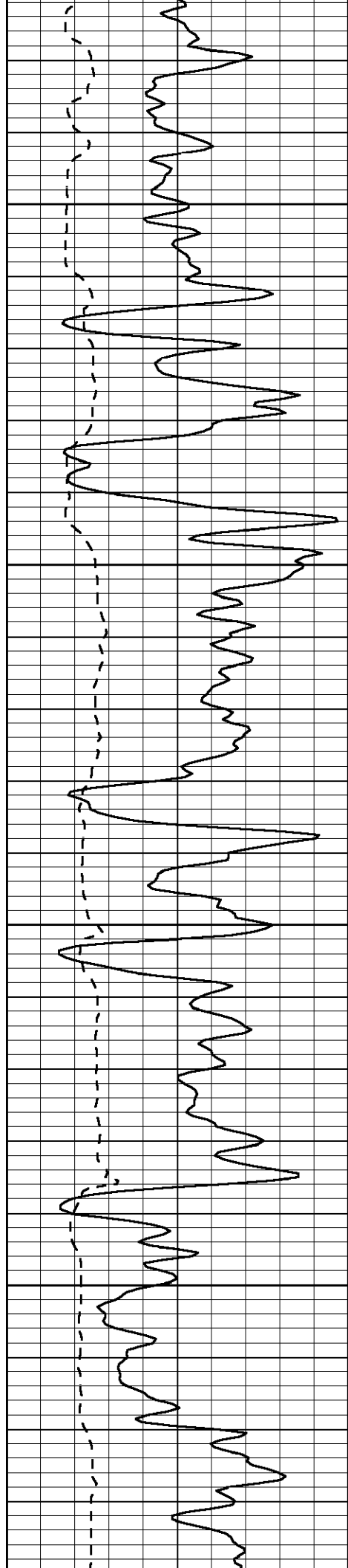
-63

3150

-63

3200

-63

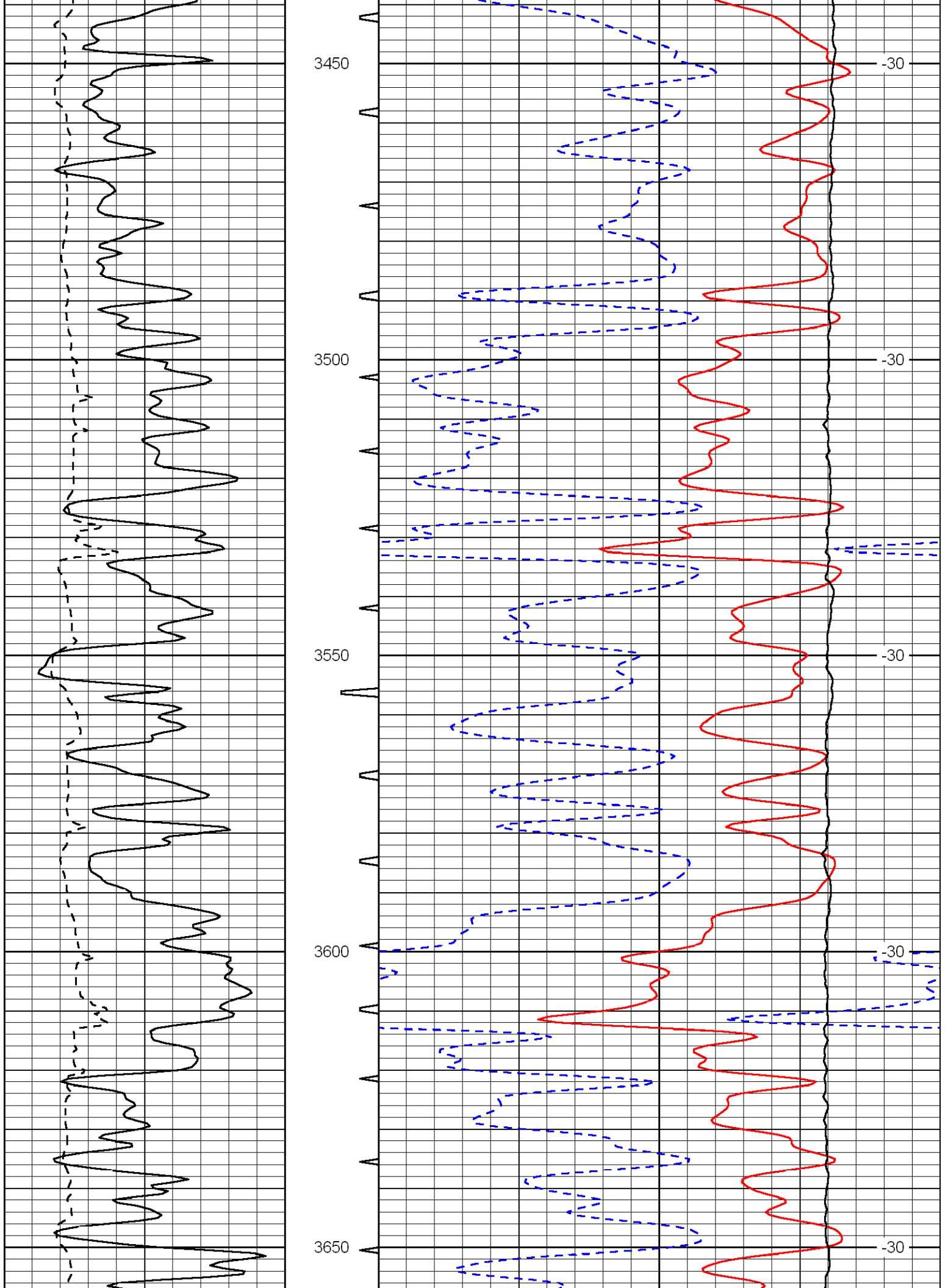


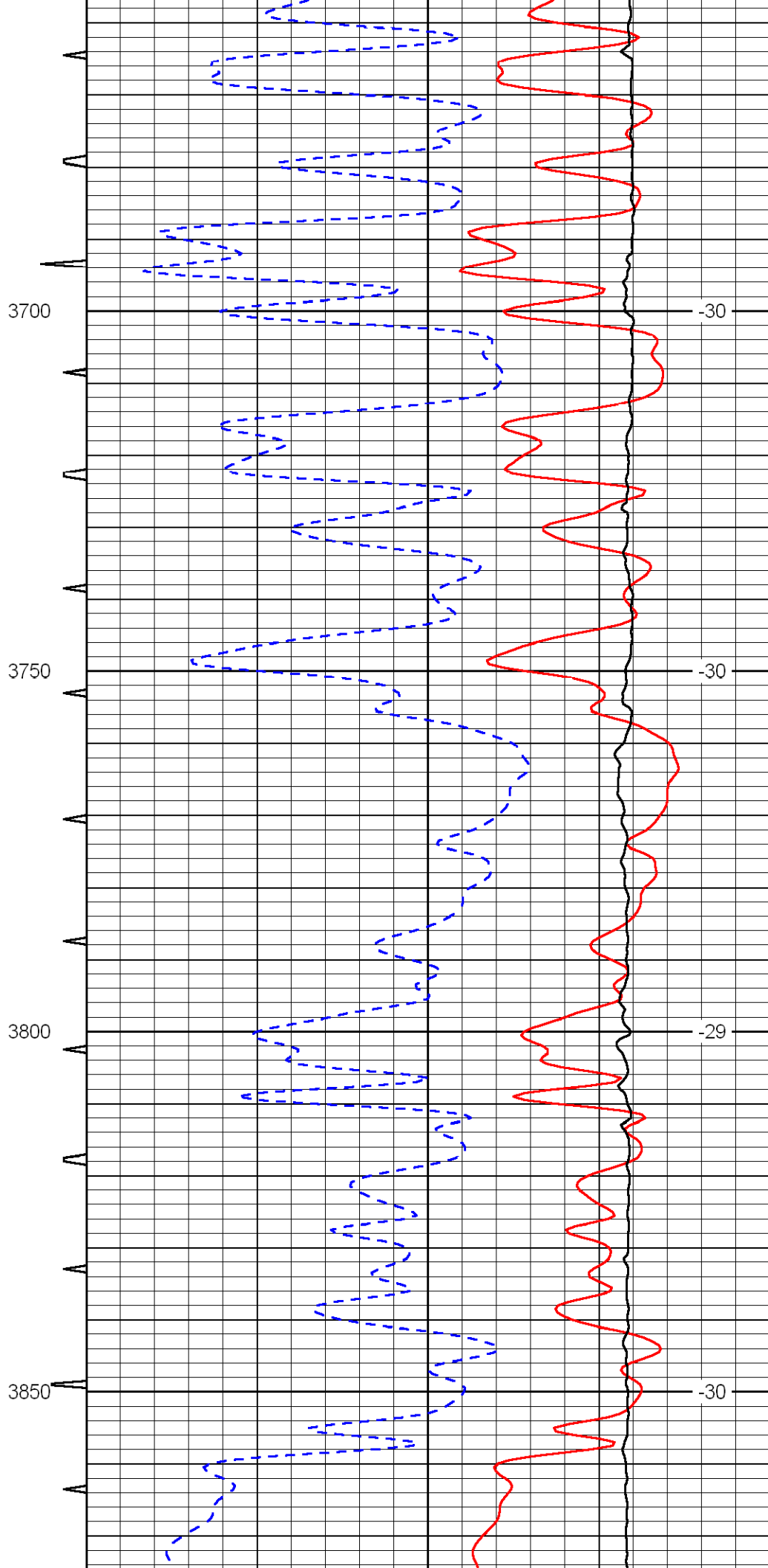
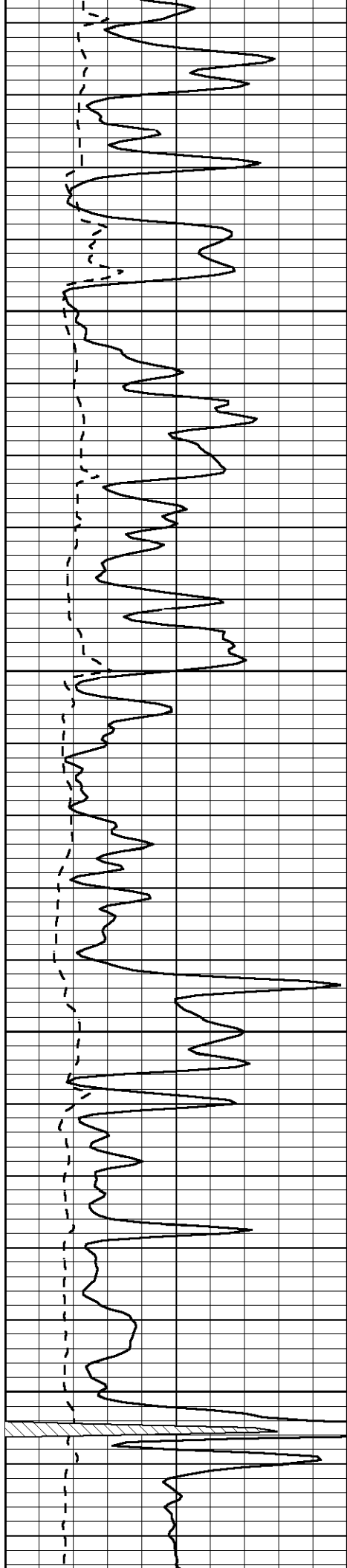
3250 -61

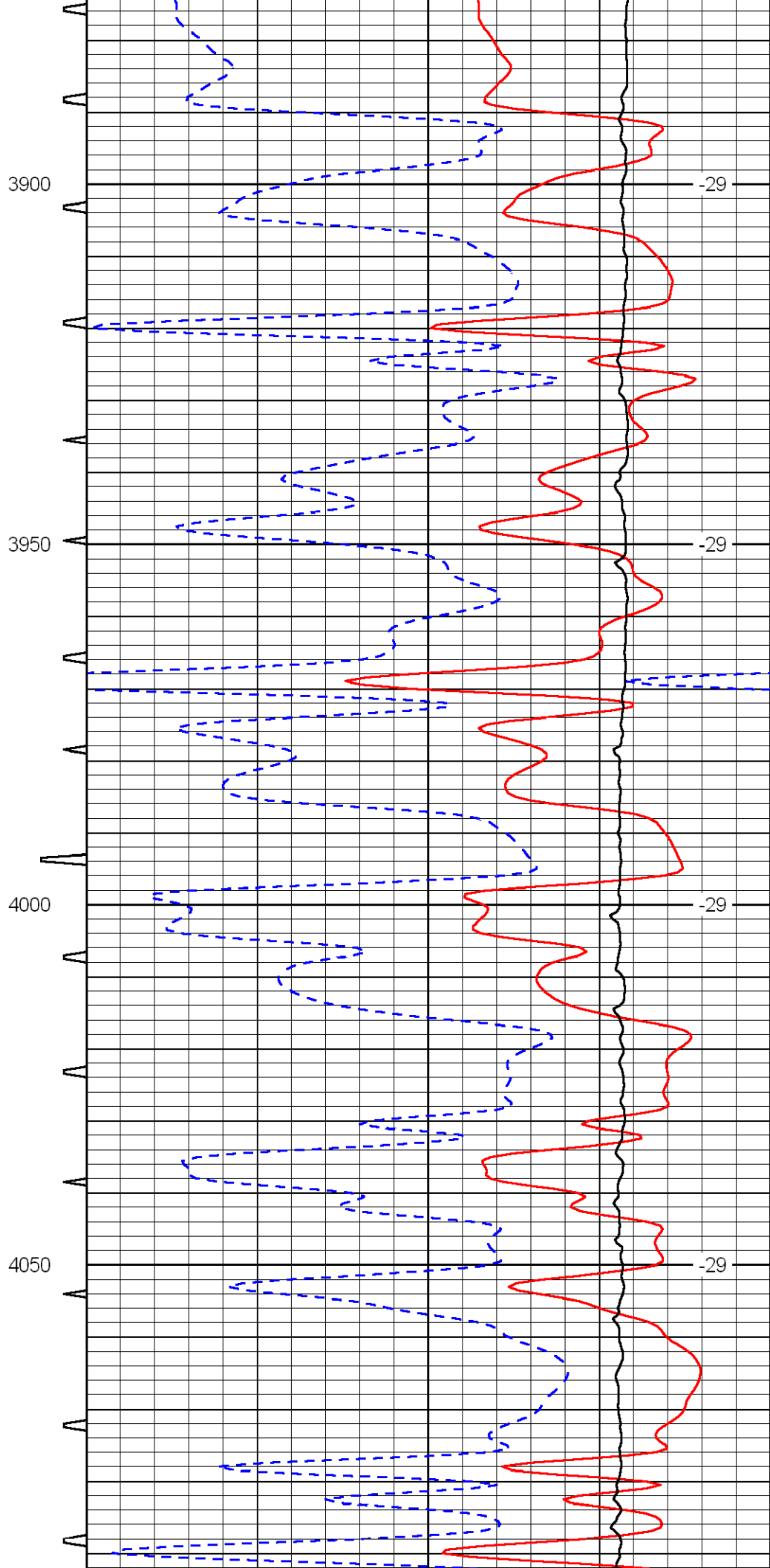
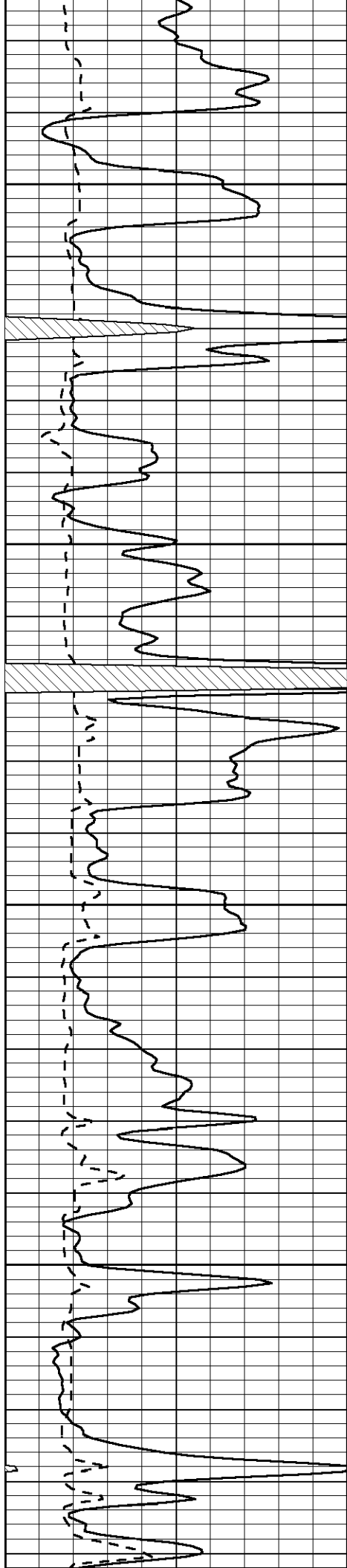
3300 -61

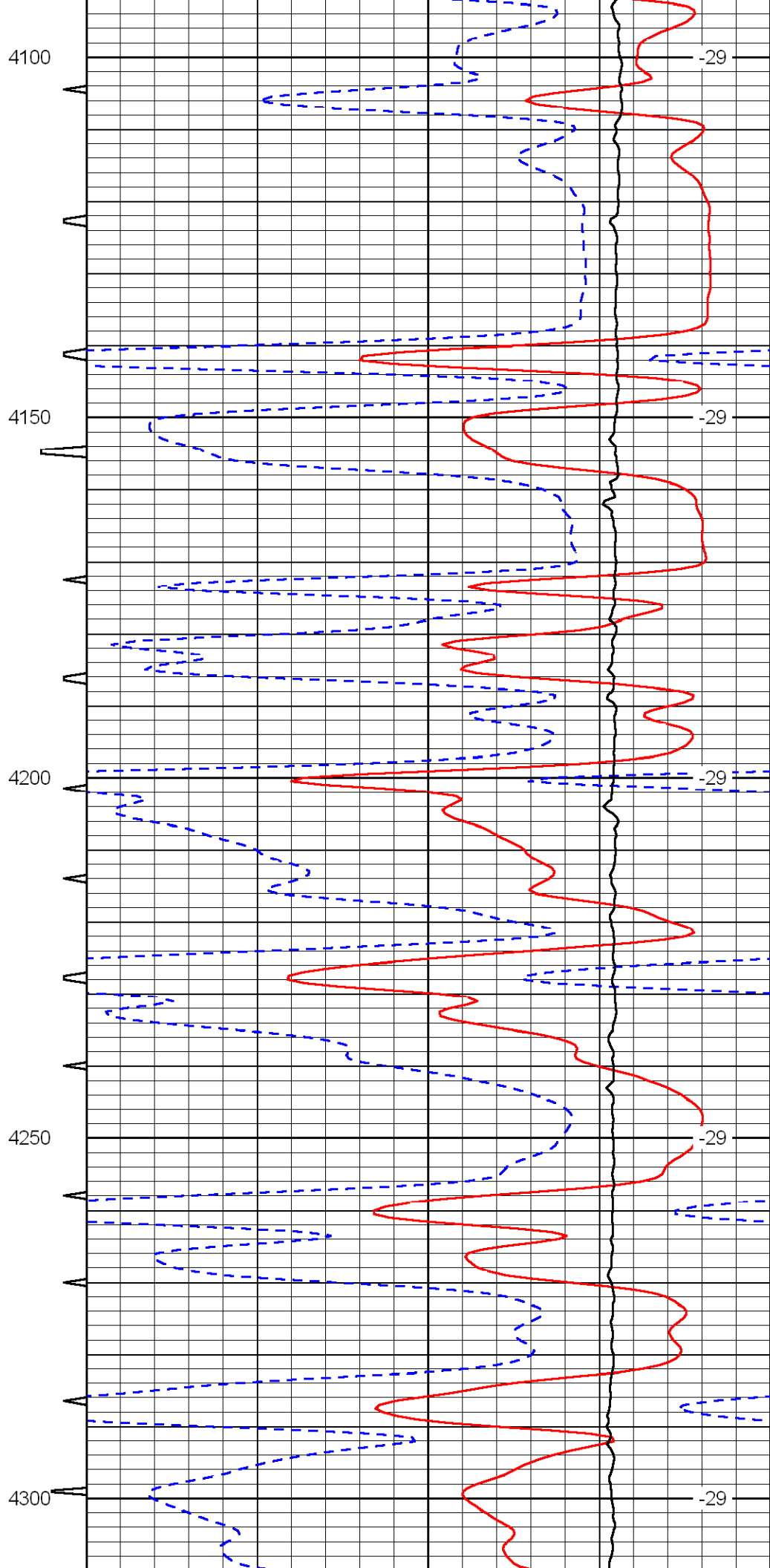
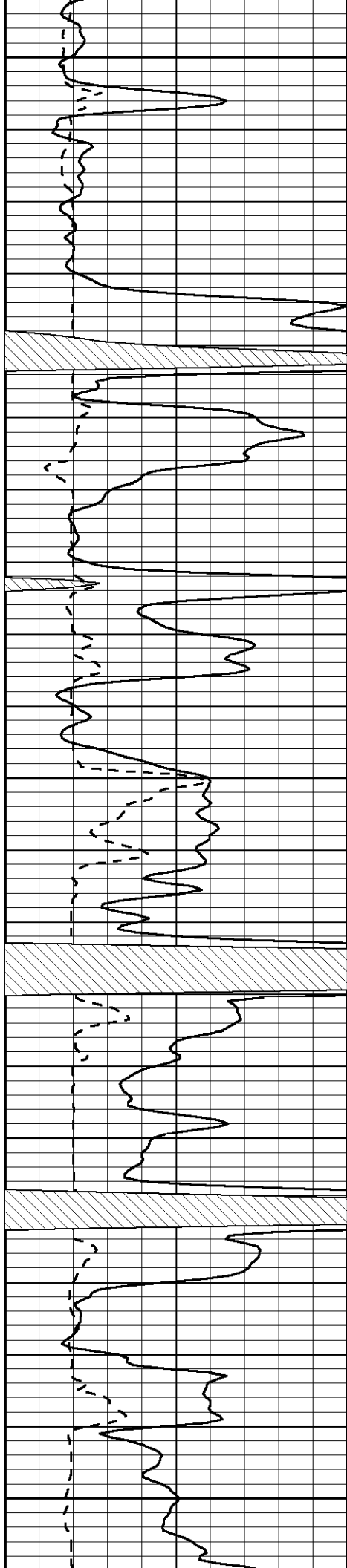
3350 -61

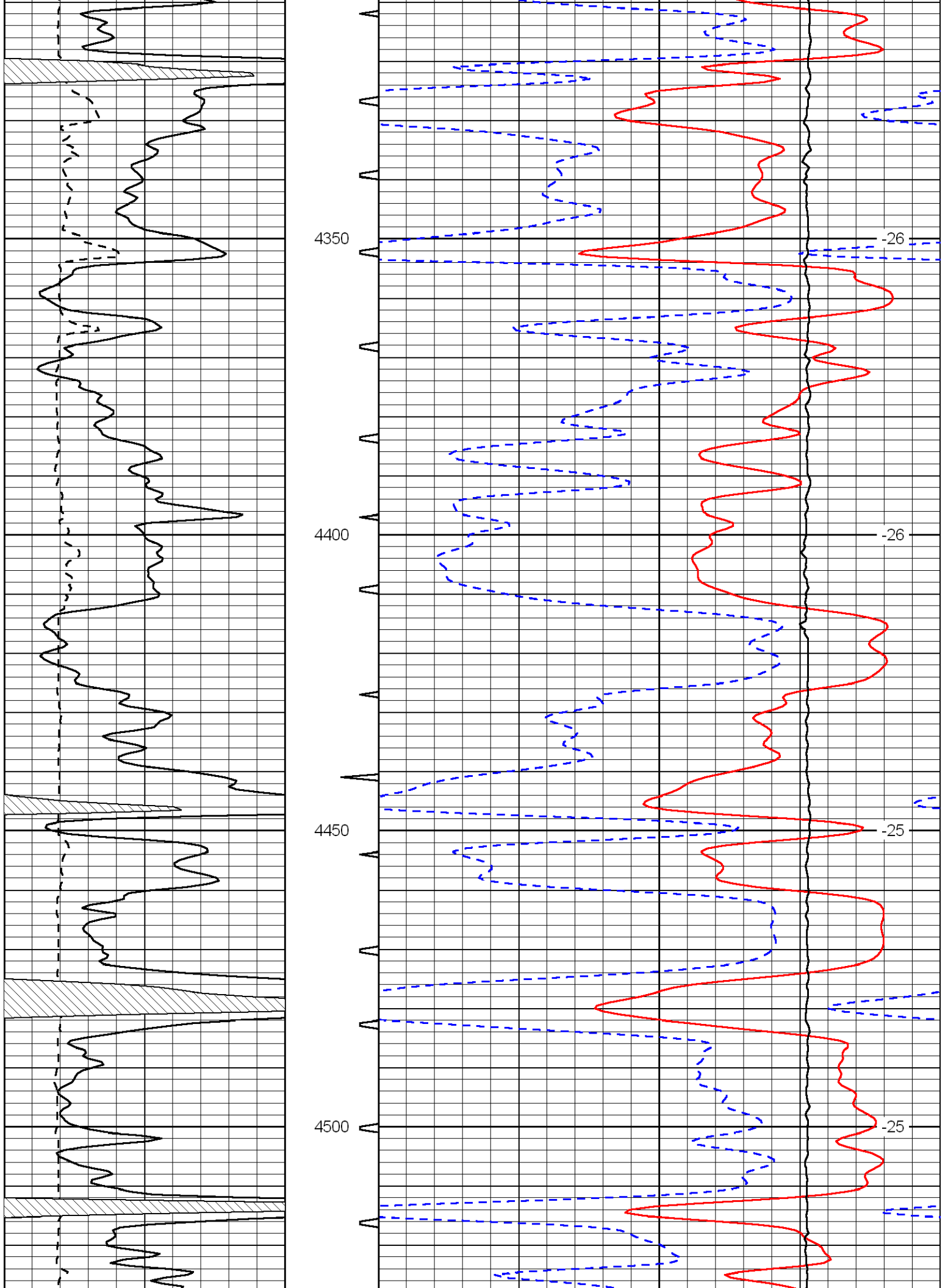
3400 -30

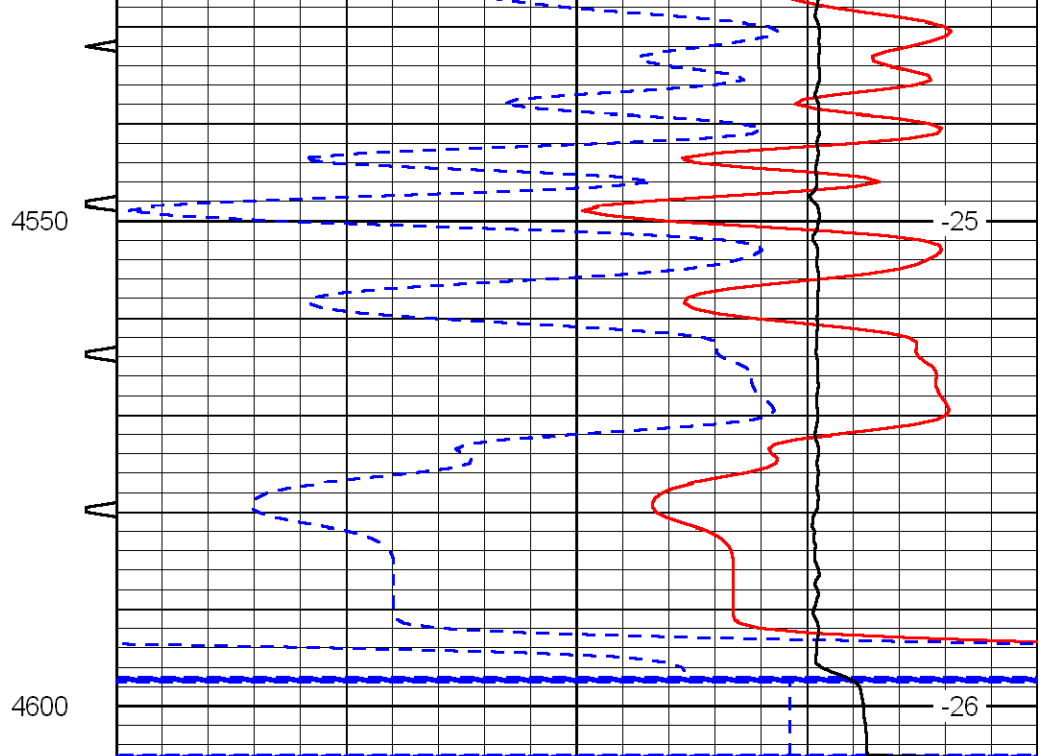
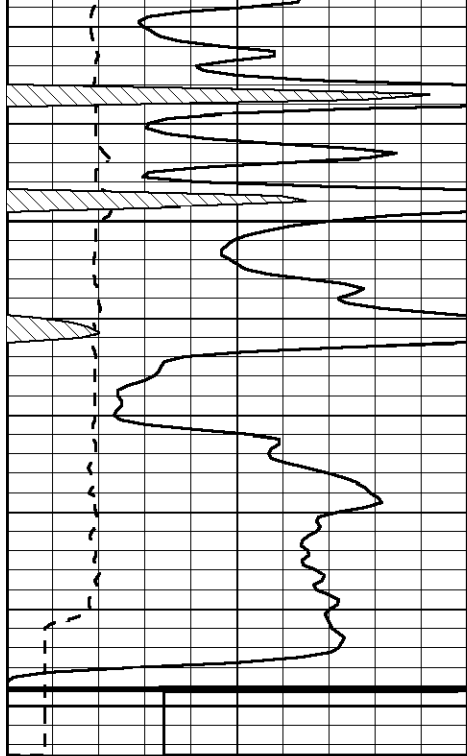












0	Gamma Ray	150	Sonic Int	140	Delta Time (usec/ft)	40
150	Gamma Ray	300	5	0	Sonic Porosity (Limestone)	-10
6	Caliper (GAPI)	16		10000	LTEN (lb)	0
LSPD						