



# Radiation Guard Log

**DIGITAL LOG** (785) 625-3858

API No. API 15-193-20,760-00-00

Company **Russell Oil, Inc.**

Well **SK No. 1-13**

Field **Wildcat**

County **Thomas** State **Kansas**

Location **W2 NE NW SE  
2,310' FSL & 1,940' FEL**

Sec: **13** Twp: **10S** Rge: **31W**

Other Services  
MEL  
BHCS

Permanant Datum **Ground Level** Elevation **2938**

Log Measured From **Kelly Bushing** 10 Ft. Above Perm. Datum

Drilling Measured From **Frookelly Bushing** K.B. 2948  
D.F. Datum  
G.L. 2938

Date **4/1/2009**

Run Number **One**

Depth Driller **4600**

Depth Logger **4596**

Bottom Logged Interval **4595**

Top Log Interval **200**

Casing Driller **8.625 @ 224**

Casing Logger **223**

Bit Size **7.875**

Type Fluid in Hole **Chemical**

Salinity.ppm CL **1200**

Density / Viscosity **9.4 58**

pH / Fluid Loss **10.0 8.4**

Source of Sample **Flowline**

Rm @ Meas. Temp **2 @ 52**

Rmf @ Meas. Temp **1.50 @ 52**

Rmc @ Meas. Temp **2.70 @ 52**

Source of Rmf / Rmc **Charts**

Rm @ BHT **.84 @ 124**

Operating Rig Time **4 Hours**

Max Rec. Temp. F **124**

Equipment Number **17**

Location **Hays**

Recorded By **J. Long**

Witnessed By **Steve Angle**

Recorded By **M. Garrison**

Witnessed By **Kevin Bailey**

<<< Fold Here >>>

All interpretations are opinions based on inferences from electrical or other measurements and we cannot and do not guarantee the accuracy or correctness of any interpretation, and we shall not, except in the case of gross or willful negligence on our part, be liable or responsible for any loss, costs, damages, or expenses incurred or sustained by anyone resulting from any interpretation made by any of our officers, agents or employees. These interpretations are also subject to our general terms and conditions set out in our current Price Schedule.

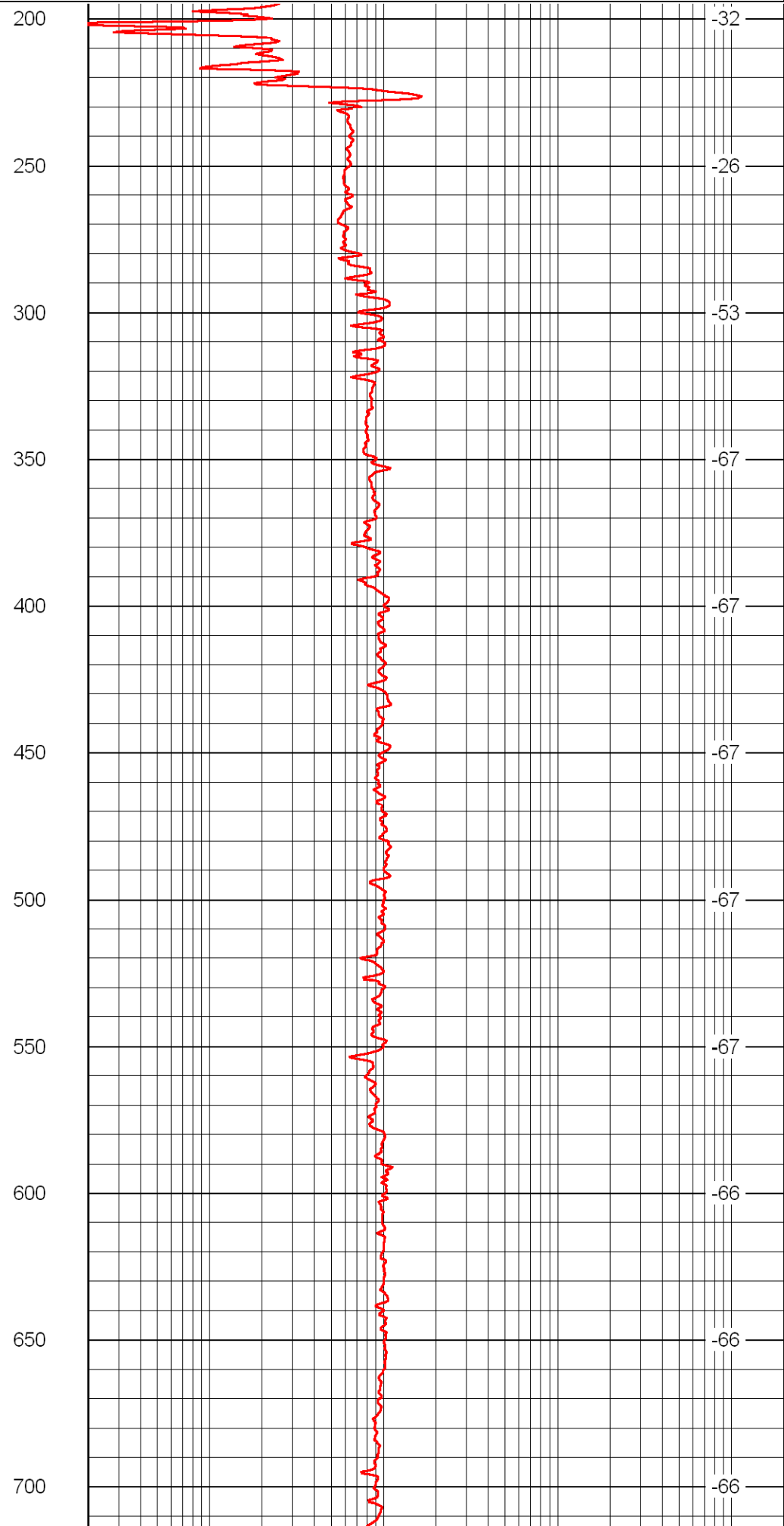
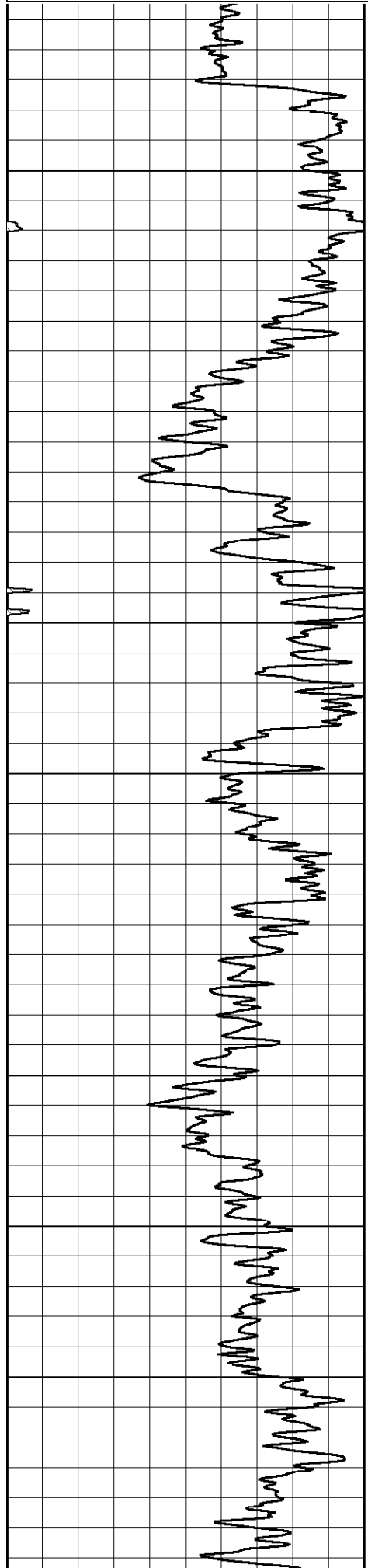
### Comments

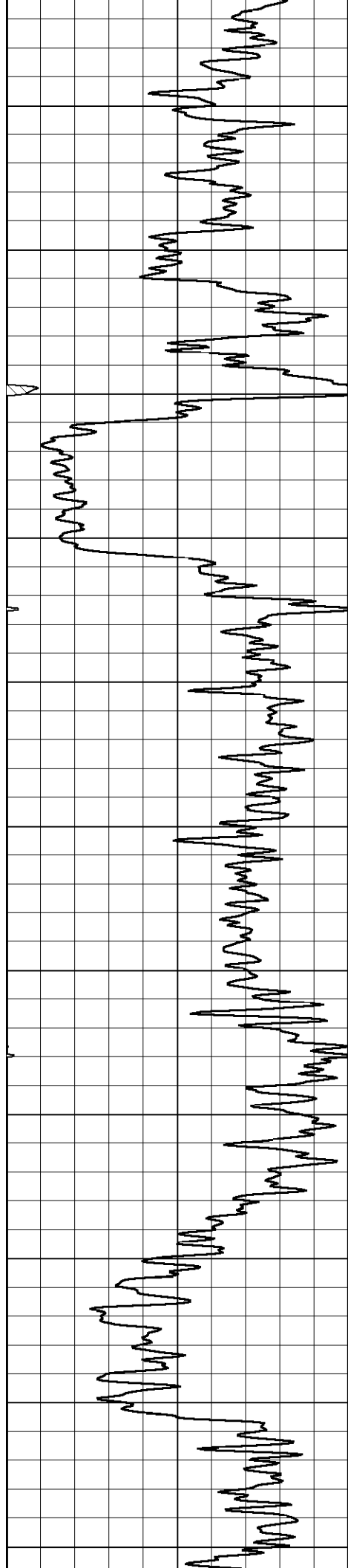
Thank you for using Log-Tech, Inc.  
(785) 625-3858

I-70 & Campus Rd, 5 N to D Rd, 1/2 E, N Into

Database File: russellhd.db  
 Dataset Pathname: rag/rsslrg2  
 Presentation Format: rag2in  
 Dataset Creation: Wed Apr 01 07:33:50 2009  
 Charted by: Depth in Feet scaled 1:600

LSPD





750

800

850

900

950

1000

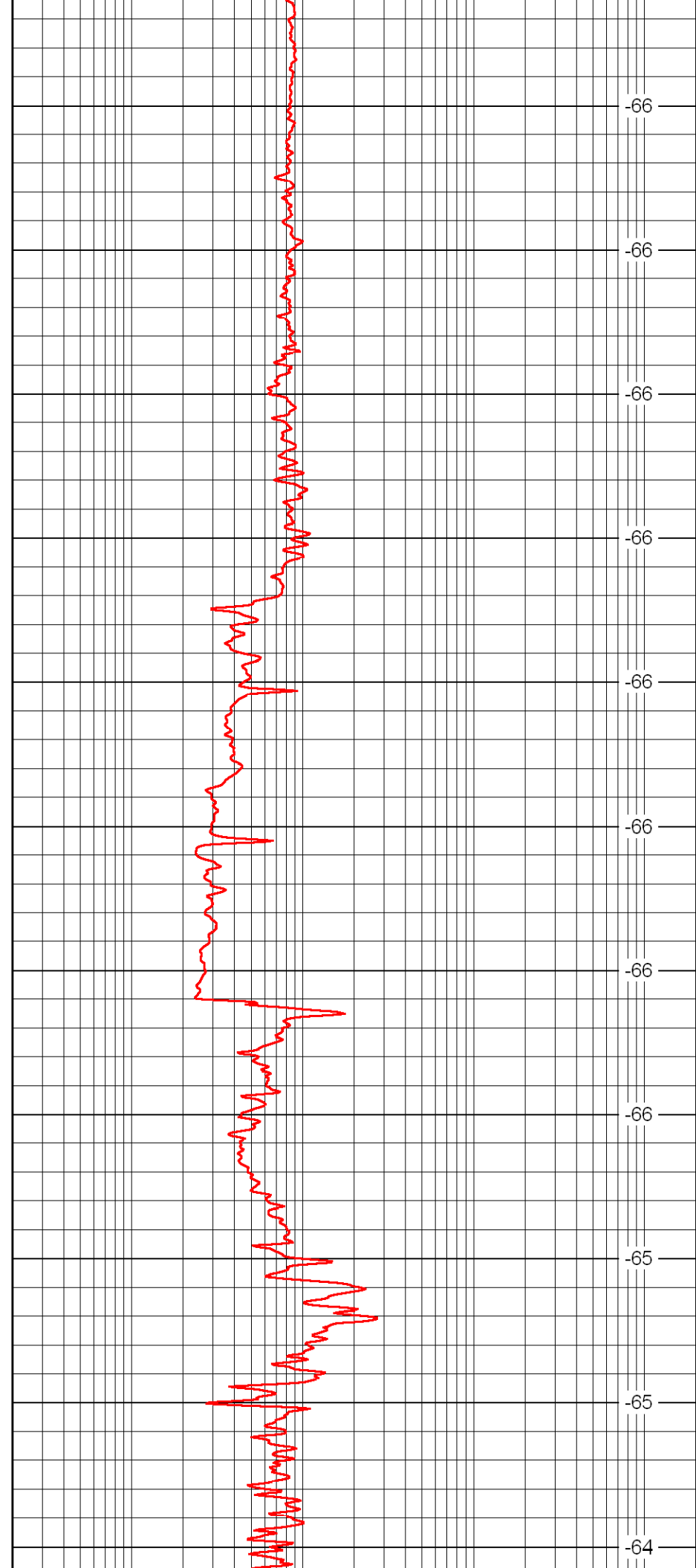
1050

1100

1150

1200

1250



-66

-66

-66

-66

-66

-66

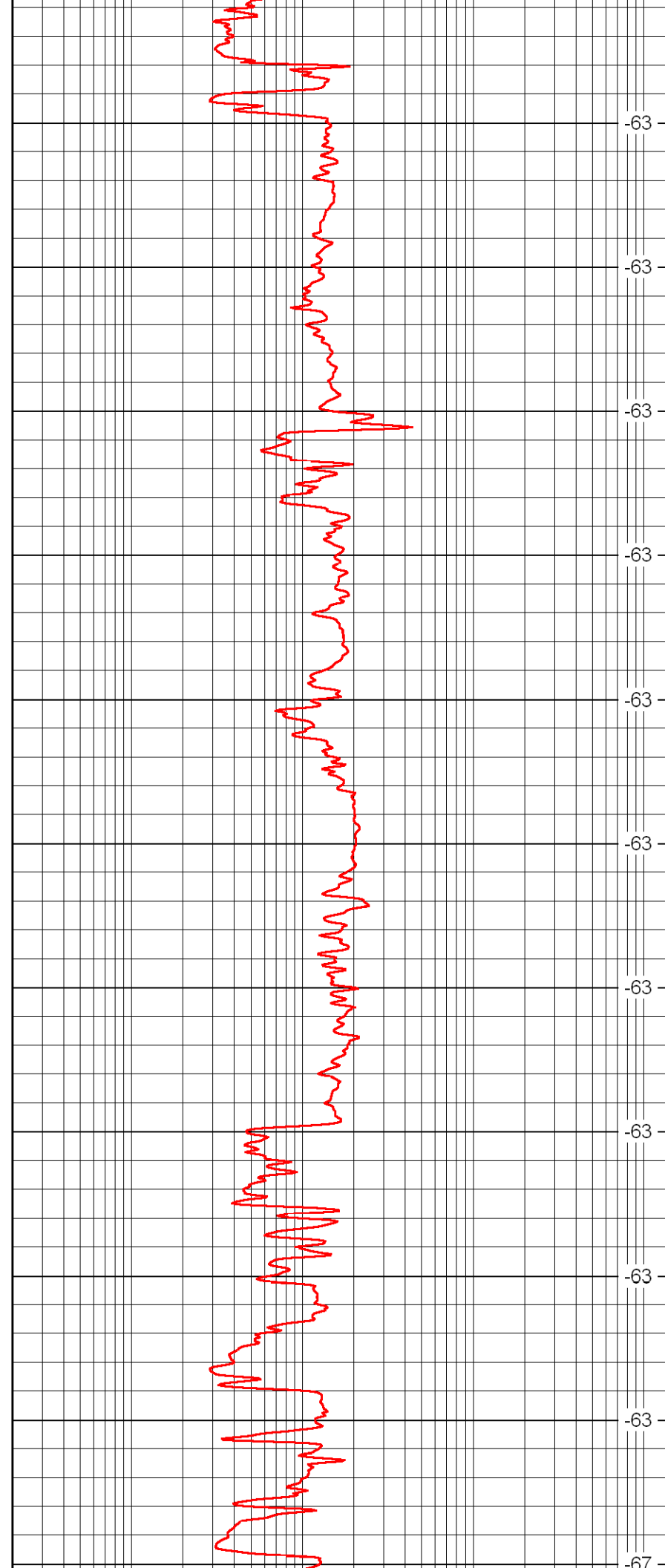
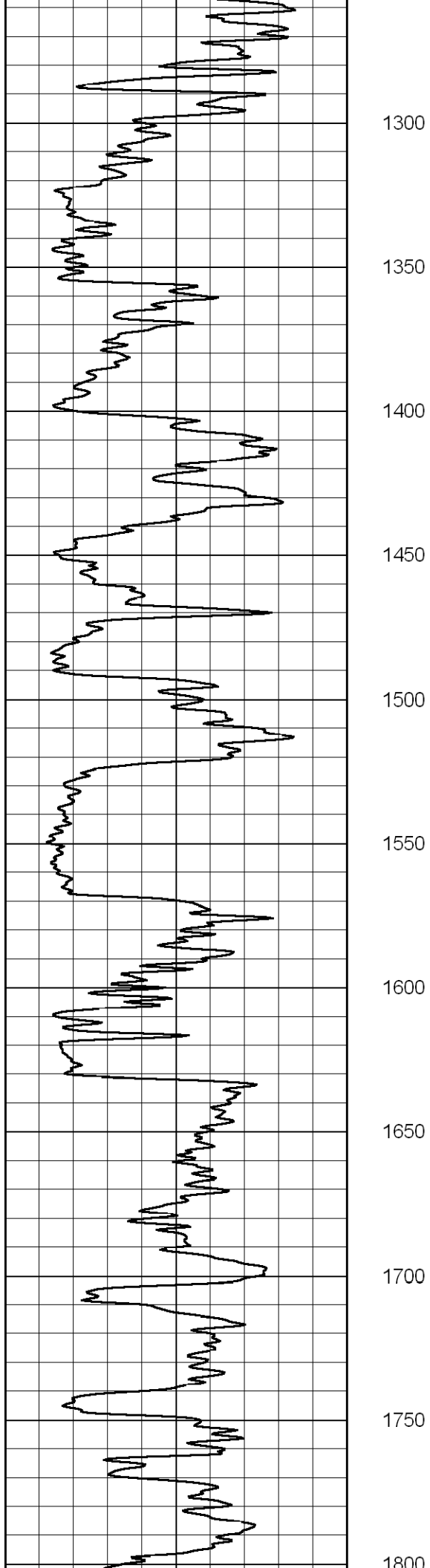
-66

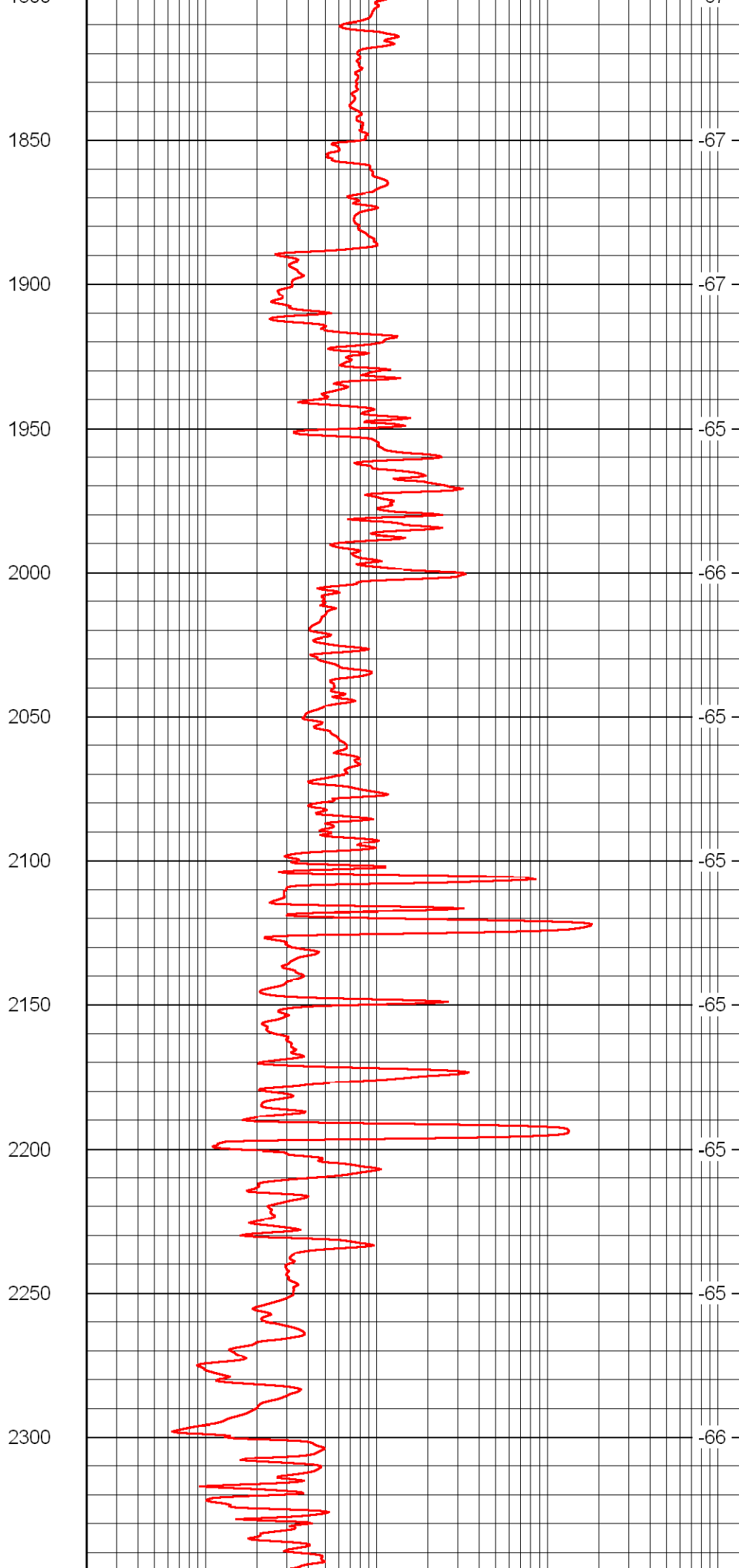
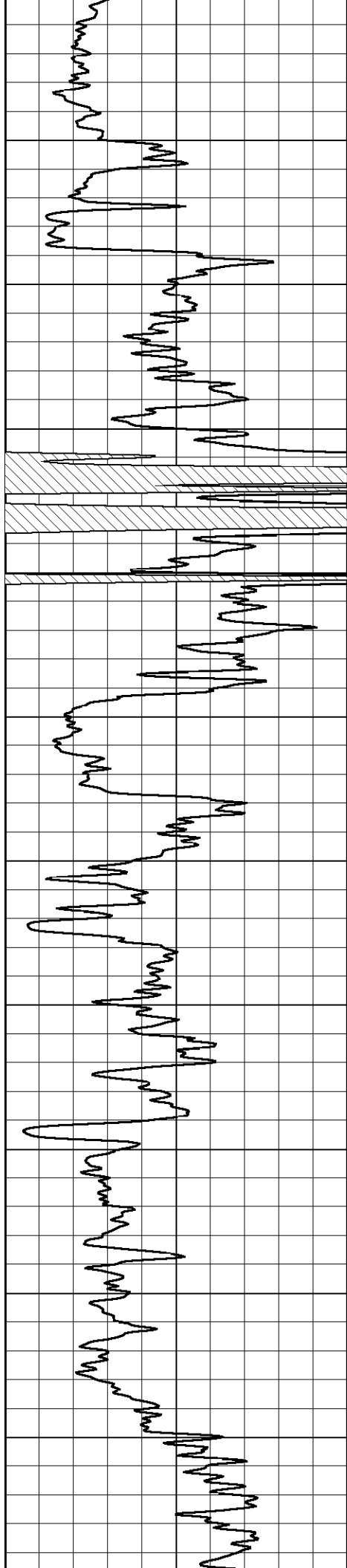
-66

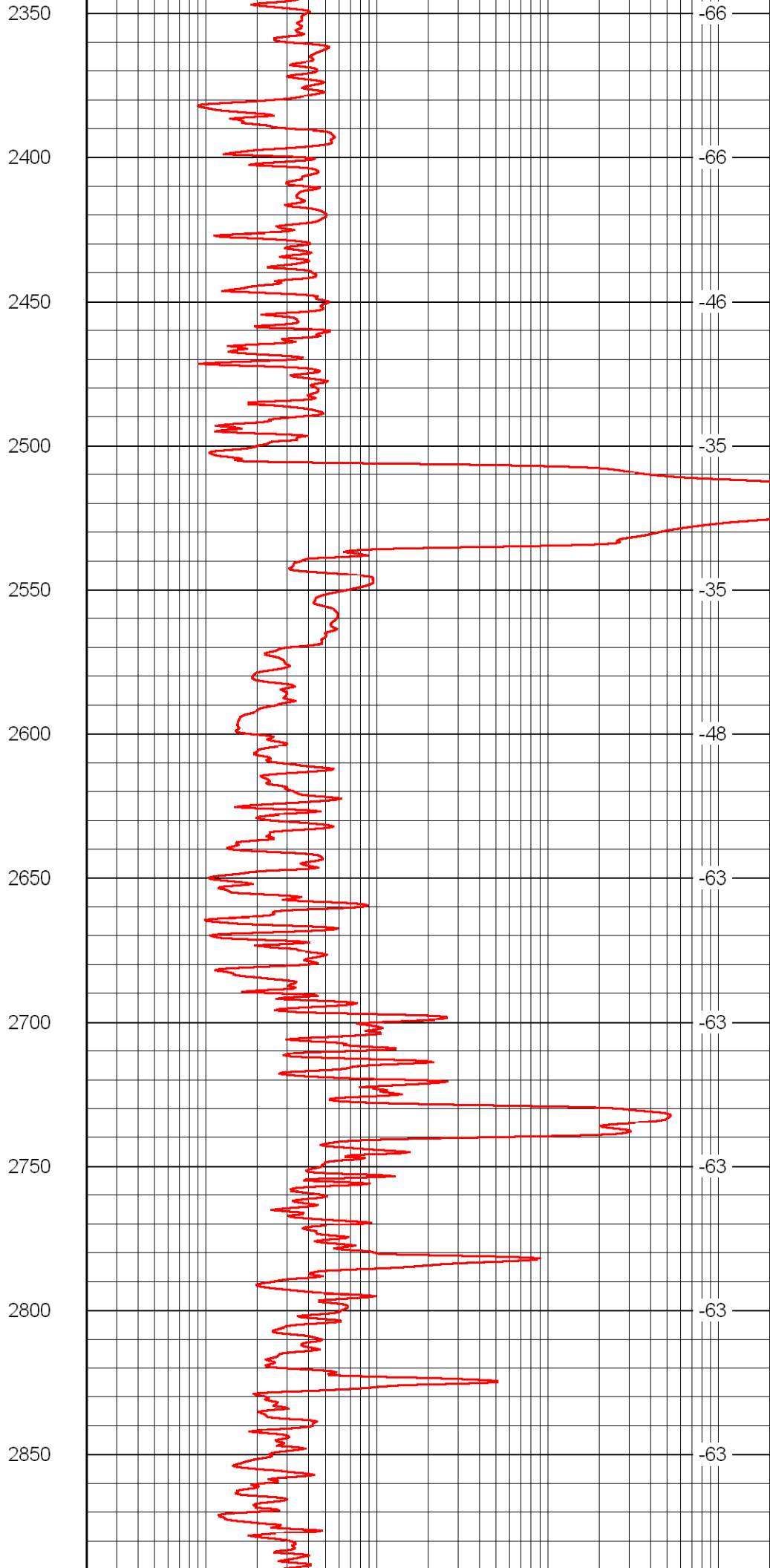
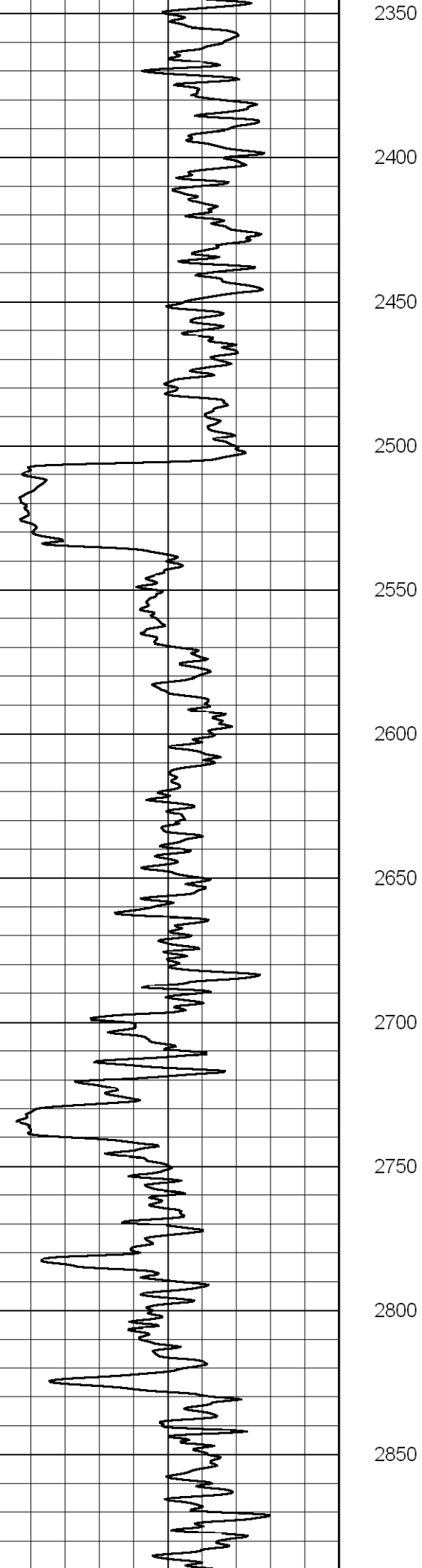
-65

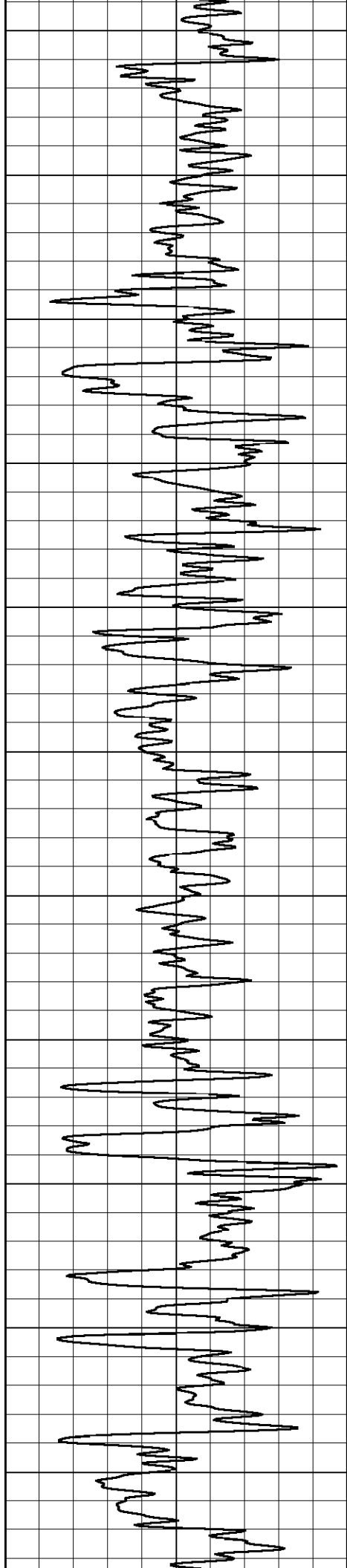
-65

-64

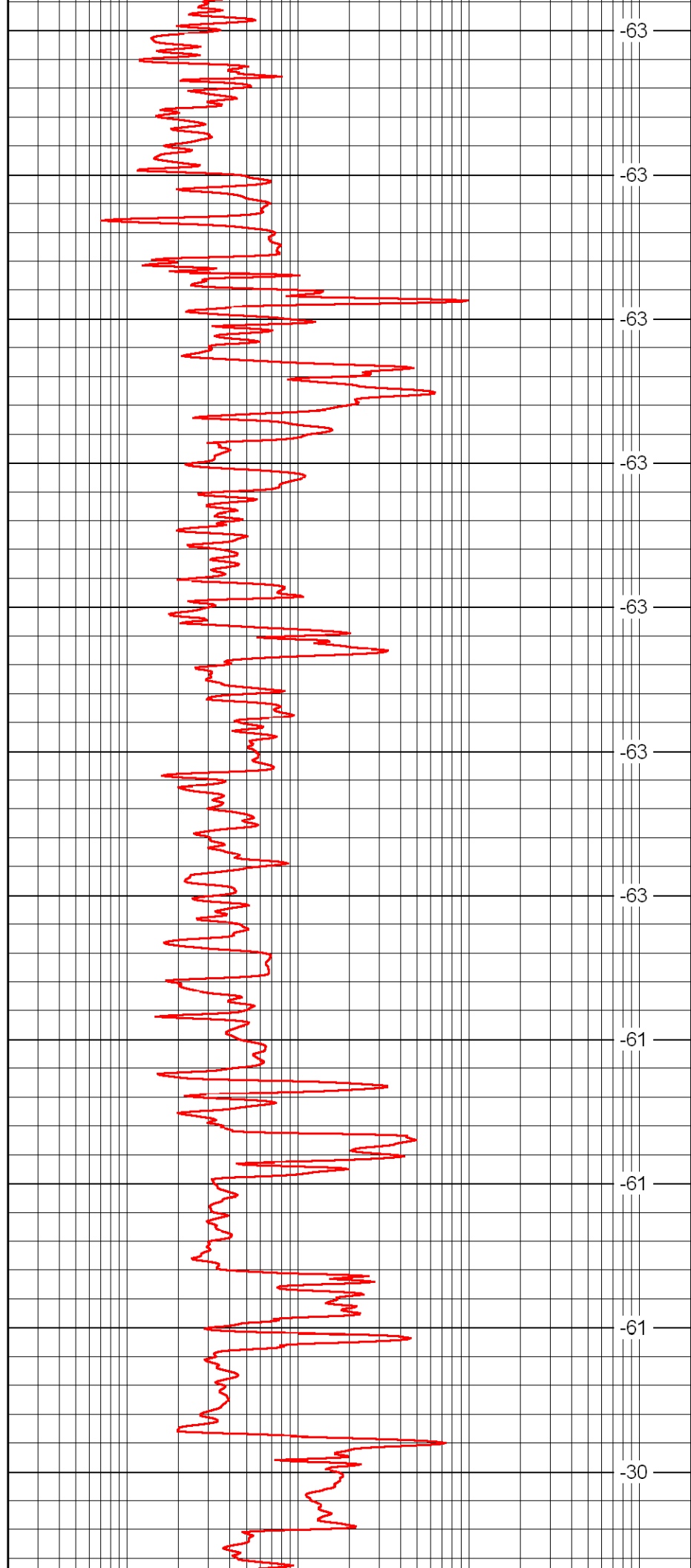




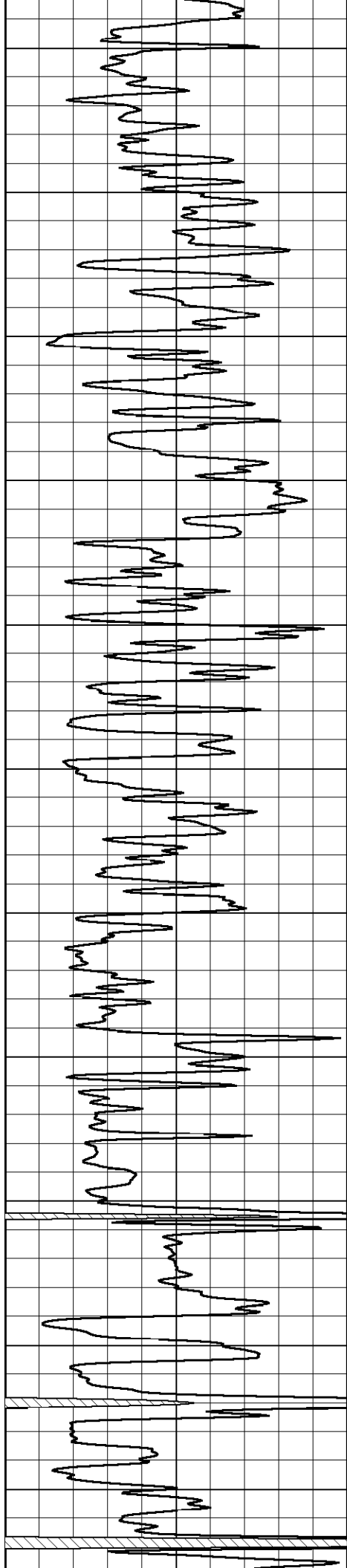




2900  
2950  
3000  
3050  
3100  
3150  
3200  
3250  
3300  
3350  
3400



-63  
-63  
-63  
-63  
-63  
-63  
-63  
-61  
-61  
-61  
-30



3450

3500

3550

3600

3650

3700

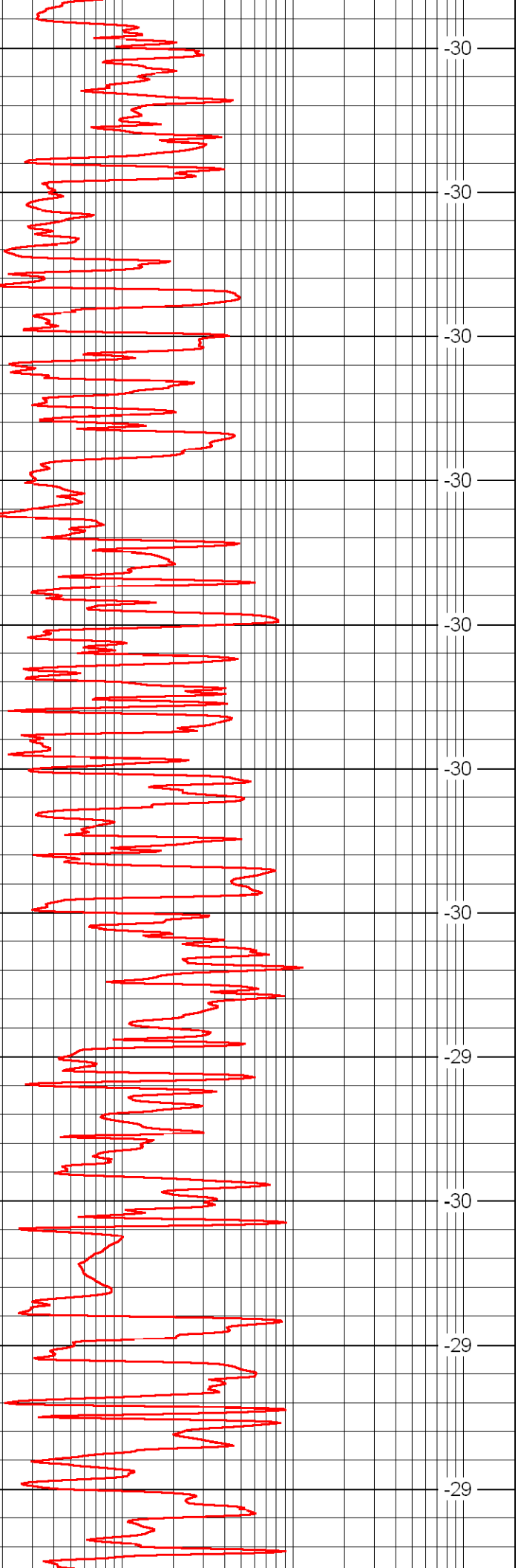
3750

3800

3850

3900

3950



-30

-30

-30

-30

-30

-30

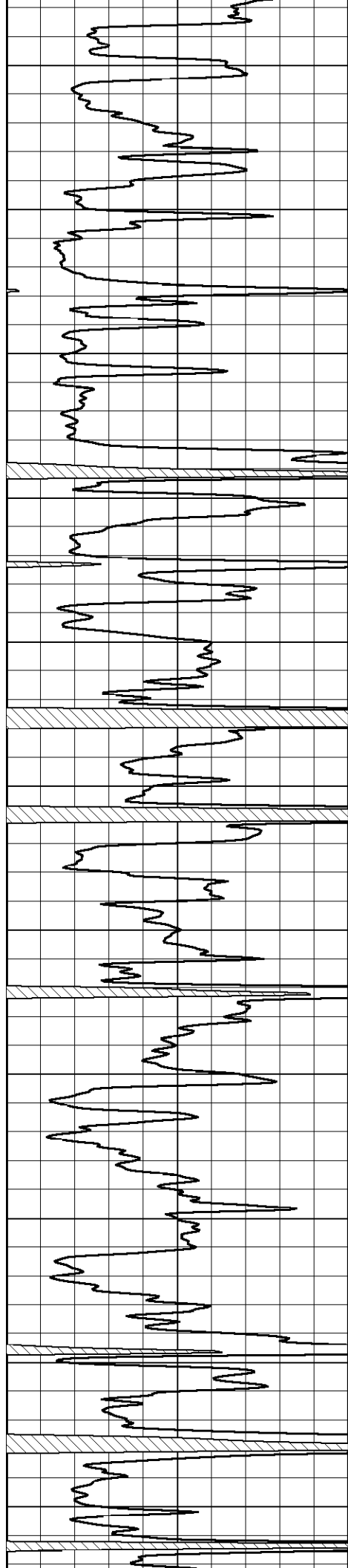
-30

-29

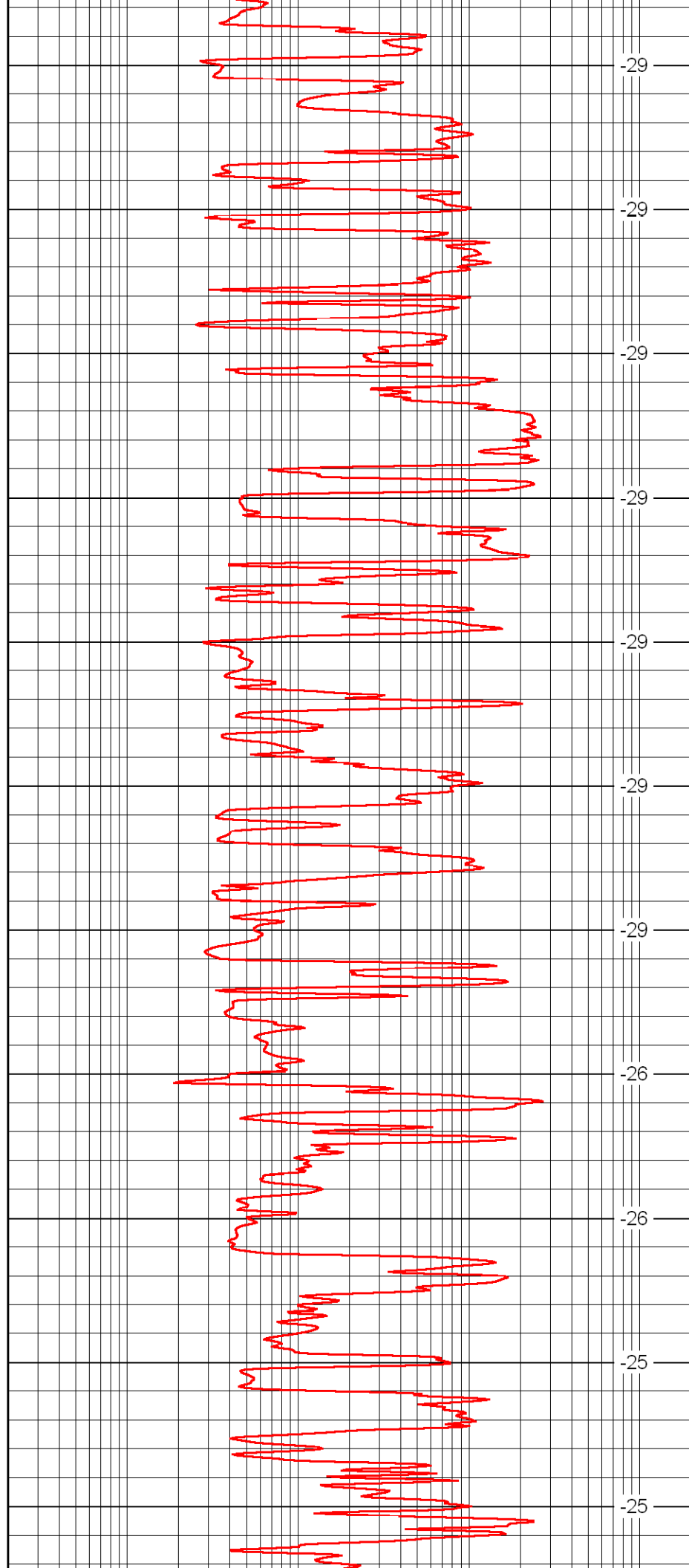
-30

-29

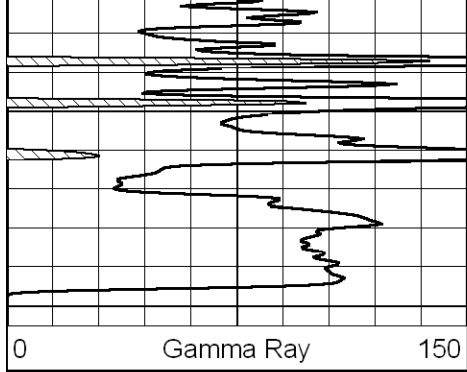
-29



4000  
4050  
4100  
4150  
4200  
4250  
4300  
4350  
4400  
4450  
4500



-29  
-29  
-29  
-29  
-29  
-29  
-29  
-26  
-26  
-25  
-25



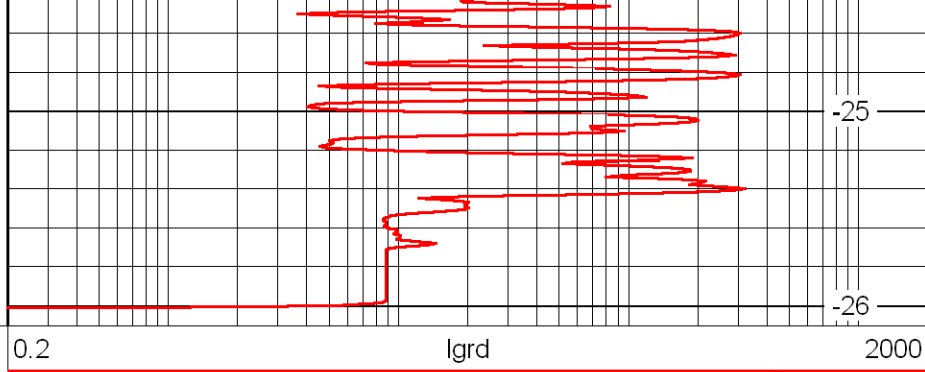
4550

4600

Gamma Ray

0

150



-25

-26

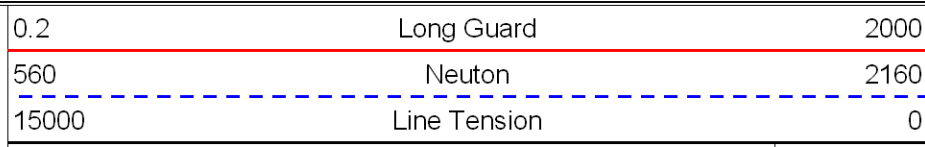
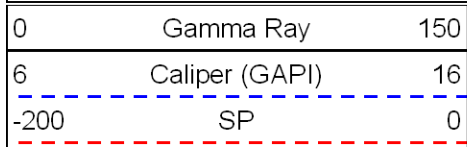
lgrd

0.2

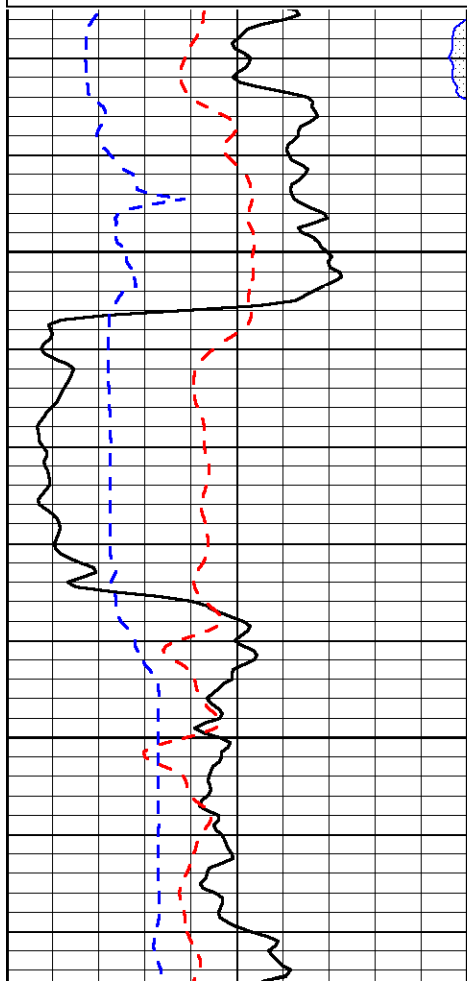
2000

LSPD

Database File: russellhd.db  
 Dataset Pathname: rag/rsslrg2  
 Presentation Format: rag  
 Dataset Creation: Wed Apr 01 07:33:50 2009  
 Charted by: Depth in Feet scaled 1:240



LSPD



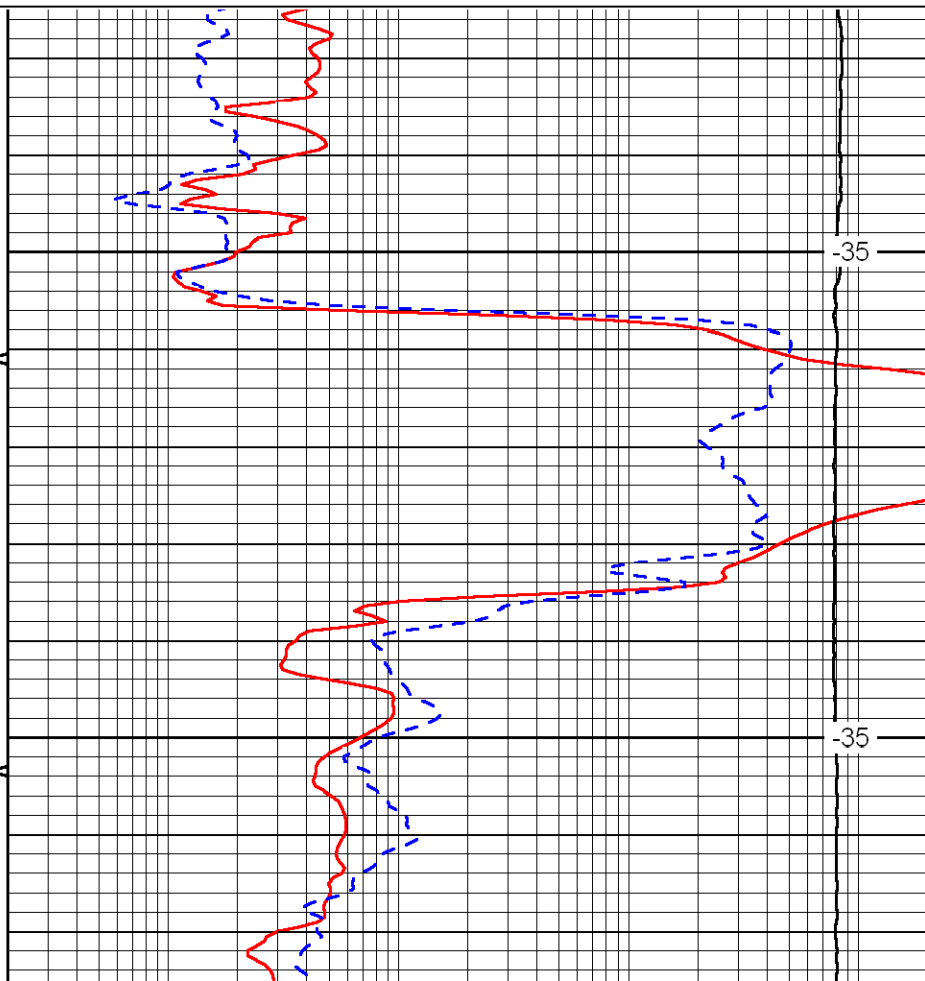
2500

2550

Gamma Ray

0

150



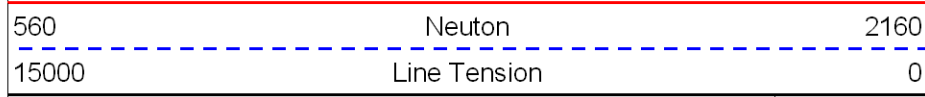
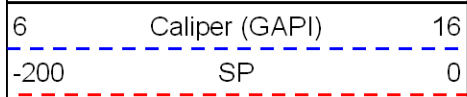
-35

-35

Long Guard

0.2

2000



LSPD

Database File: russellhd.db  
 Dataset Pathname: rag/rsslrg2  
 Presentation Format: rag  
 Dataset Creation: Wed Apr 01 07:33:50 2009  
 Charted by: Depth in Feet scaled 1:240

0	Gamma Ray	150	0.2	Long Guard	2000
6	Caliper (GAPI)	16	560	Neutron	2160
-200	SP	0	15000	Line Tension	0
LSPD					

