



# Microresistivity Log

**DIGITAL LOG** (785) 625-3858

API No. API 15-193-20,760-00-00	Company <b>Russell Oil, Inc.</b>	Well <b>SK No. 1-13</b>	Field <b>Wildcat</b>
	County <b>Thomas</b>	State <b>Kansas</b>	
	Location <b>W2 NE NW SE 2,310' FSL &amp; 1,940' FEL</b>		
	Sec: <b>13</b>	Twp: <b>10S</b>	Rge: <b>31W</b>
Permanent Datum Log Measured From Drilling Measured From	Ground Level Kelly Bushing Frotkelly Bushing	Elevation 2938 10 Ft. Above Perm. Datum	Other Services RAG BHCS
		K.B. 2948 D.F. 2938 G.L. 2938	

Date	4/1/2009
Run Number	Two
Depth Driller	4600
Depth Logger	4596
Bottom Logged Interval	4595
Top Log Interval	3400
Casing Driller	8.625 @ 224
Casing Logger	223
Bit Size	7.875
Type Fluid in Hole	Chemical
Salinity, ppm CL	1200
Density / Viscosity	9.4   58
pH / Fluid Loss	10.0   8.4
Source of Sample	Flowline
Rm @ Meas. Temp	2 @ 52
Rmf @ Meas. Temp	1.50 @ 52
Rmc @ Meas. Temp	2.70 @ 52
Source of Rmf / Rmc	Charts
Rm @ BHT	.84 @ 124
Operating Rig Time	4 Hours
Max Rec. Temp. F	124
Equipment Number	17
Location	Hays
Recorded By	J. Long
Witnessed By	Steve Angle

<<< Fold Here >>>

All interpretations are opinions based on inferences from electrical or other measurements and we cannot and do not guarantee the accuracy or correctness of any interpretation, and we shall not, except in the case of gross or willful negligence on our part, be liable or responsible for any loss, costs, damages, or expenses incurred or sustained by anyone resulting from any interpretation made by any of our officers, agents or employees. These interpretations are also subject to our general terms and conditions set out in our current Price Schedule.

### Comments

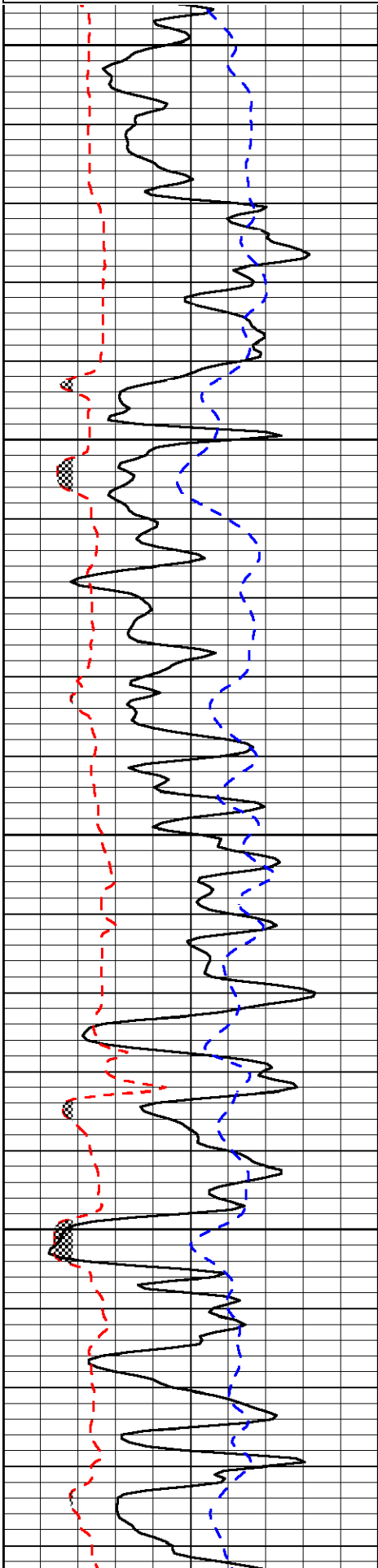
**Thank you for using Log-Tech, Inc.**  
**(785) 625-3858**  
  
**I-70 & Campus Rd, 5 N to D Rd, 1/2 E, N Into**

Database File:	russellhd.db
Dataset Pathname:	rag/rsslrg2
Presentation Format:	micro
Dataset Creation:	Wed Apr 01 07:33:50 2009
Charted by:	Depth in Feet scaled 1:240

0	Gamma Ray	150
6	Micro Log Caliper (GAPI)	16
-200	SP	0

0	Micro Inverse 1 X 1	40
0	Micro Normal 2"	40
10000	Line Weight	0

LSPD

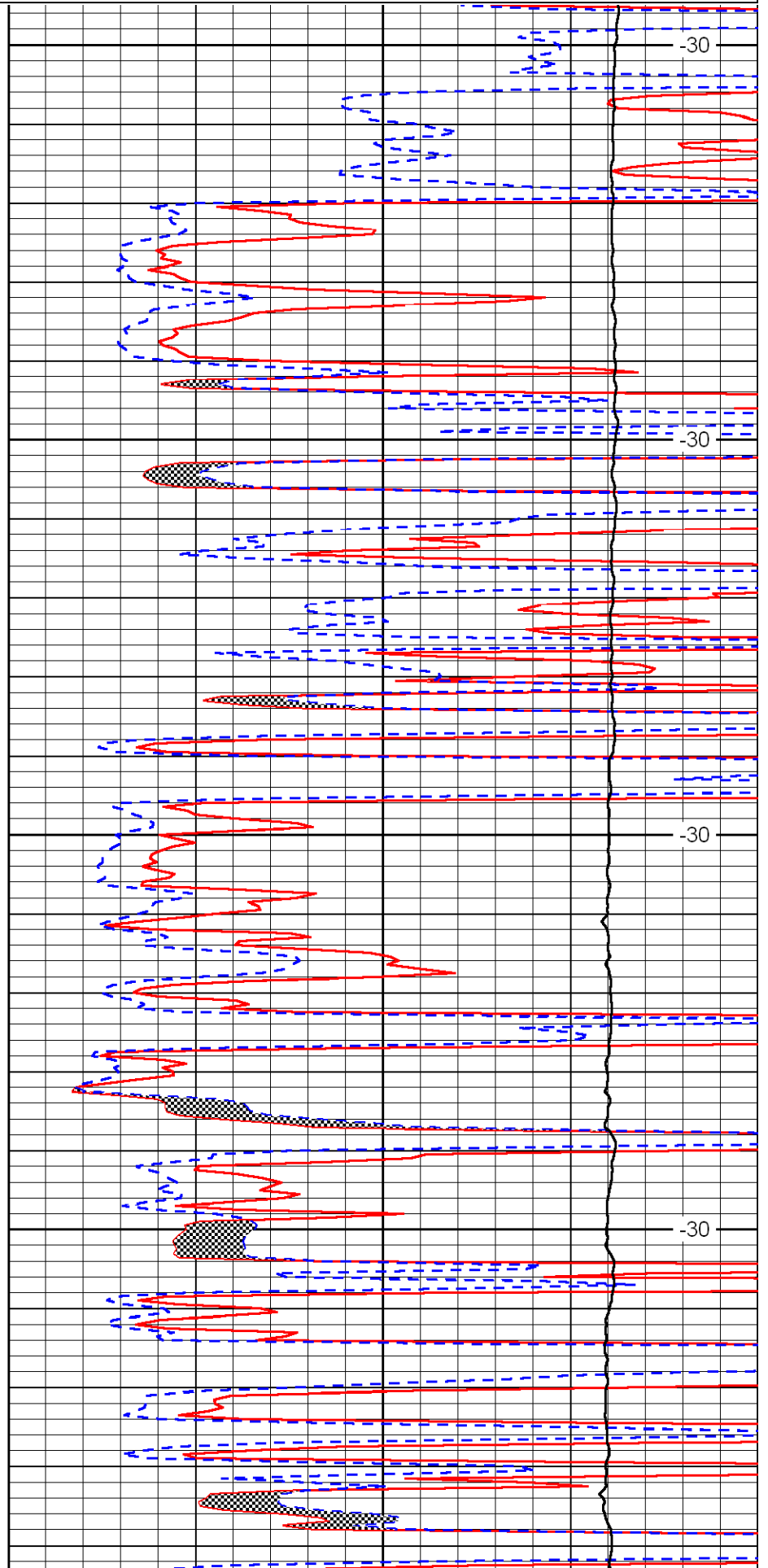


3400

3450

3500

3550

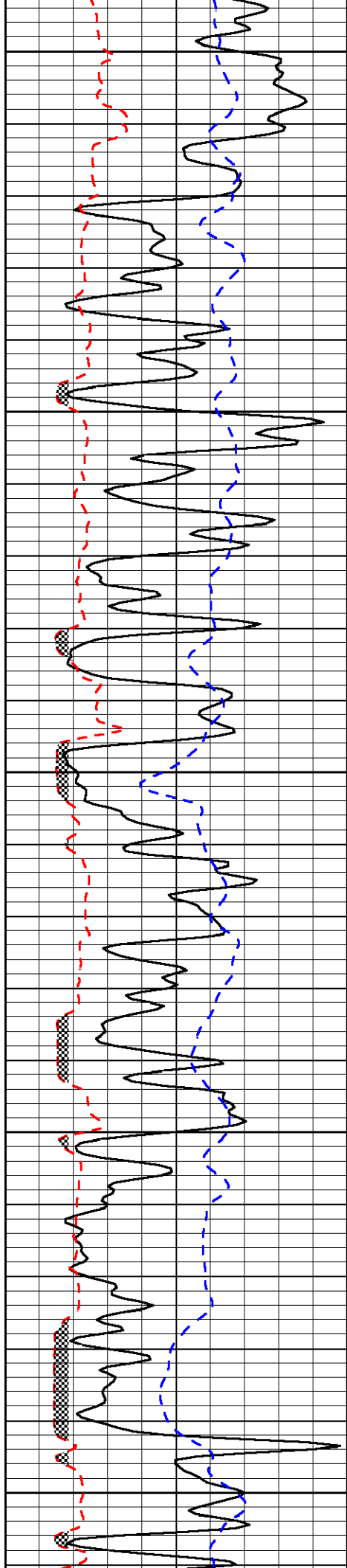


-30

-30

-30

-30



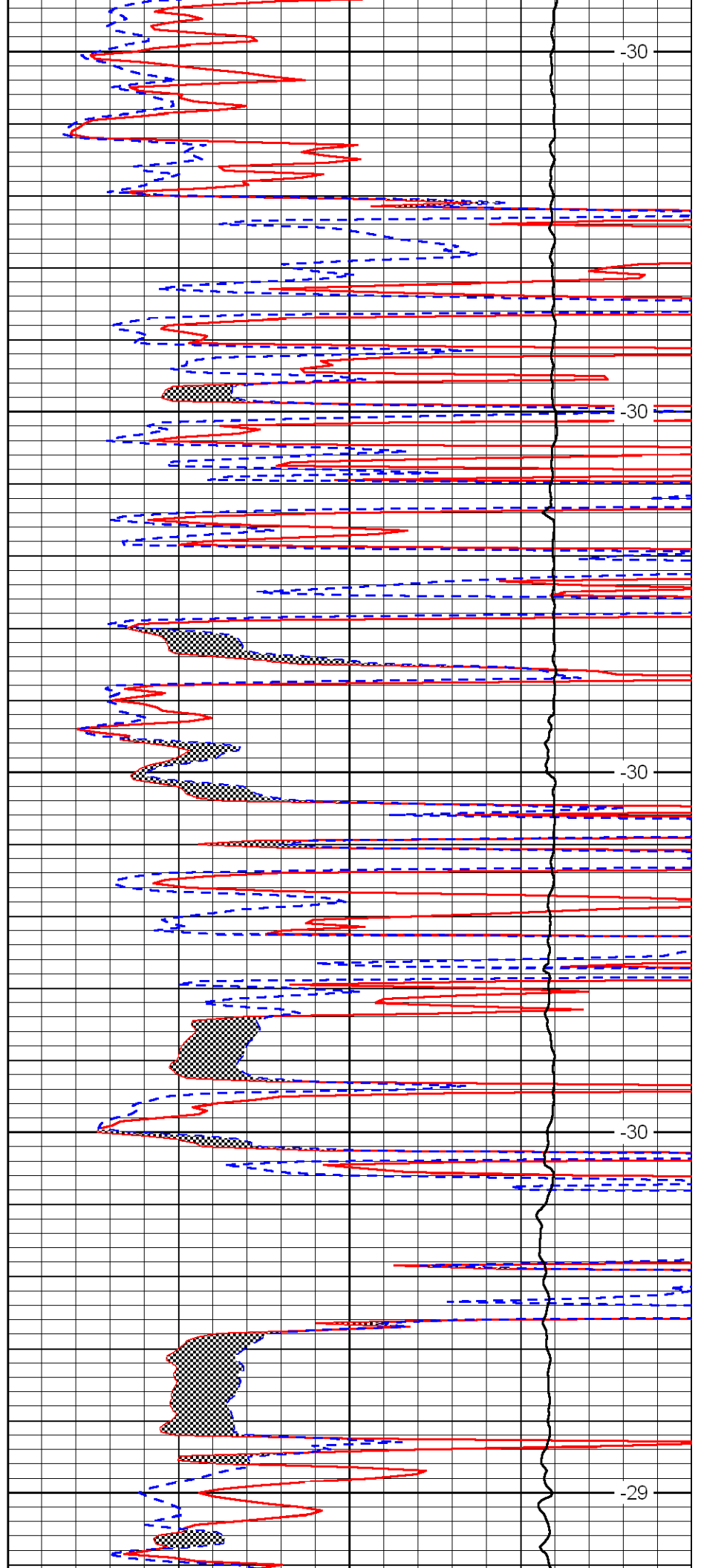
3600

3650

3700

3750

3800



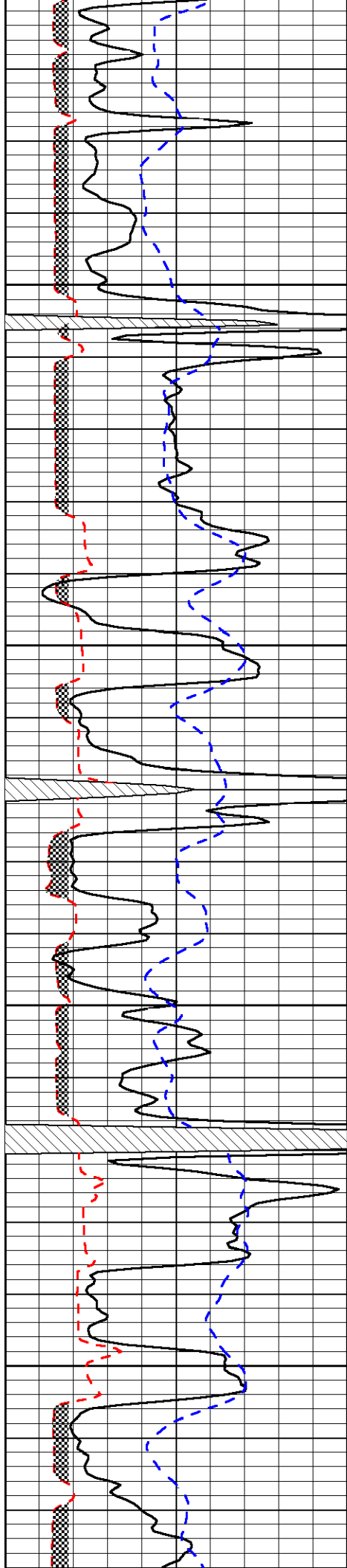
-30

-30

-30

-30

-29

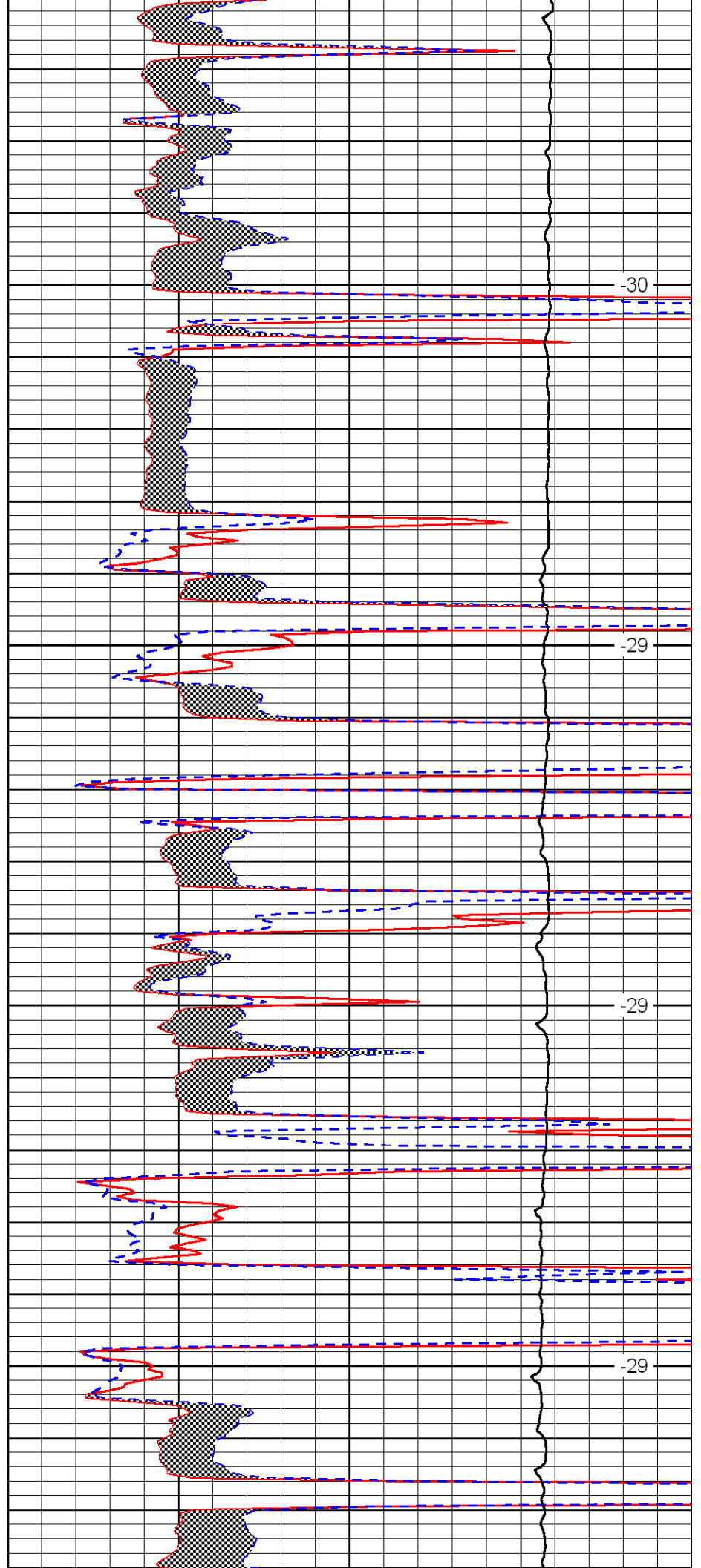


3850

3900

3950

4000

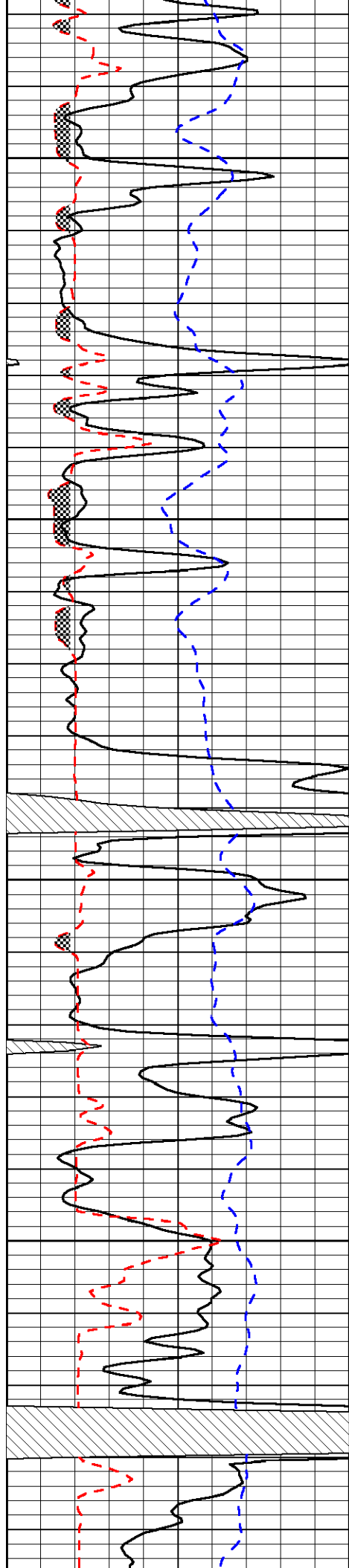


-30

-29

-29

-29

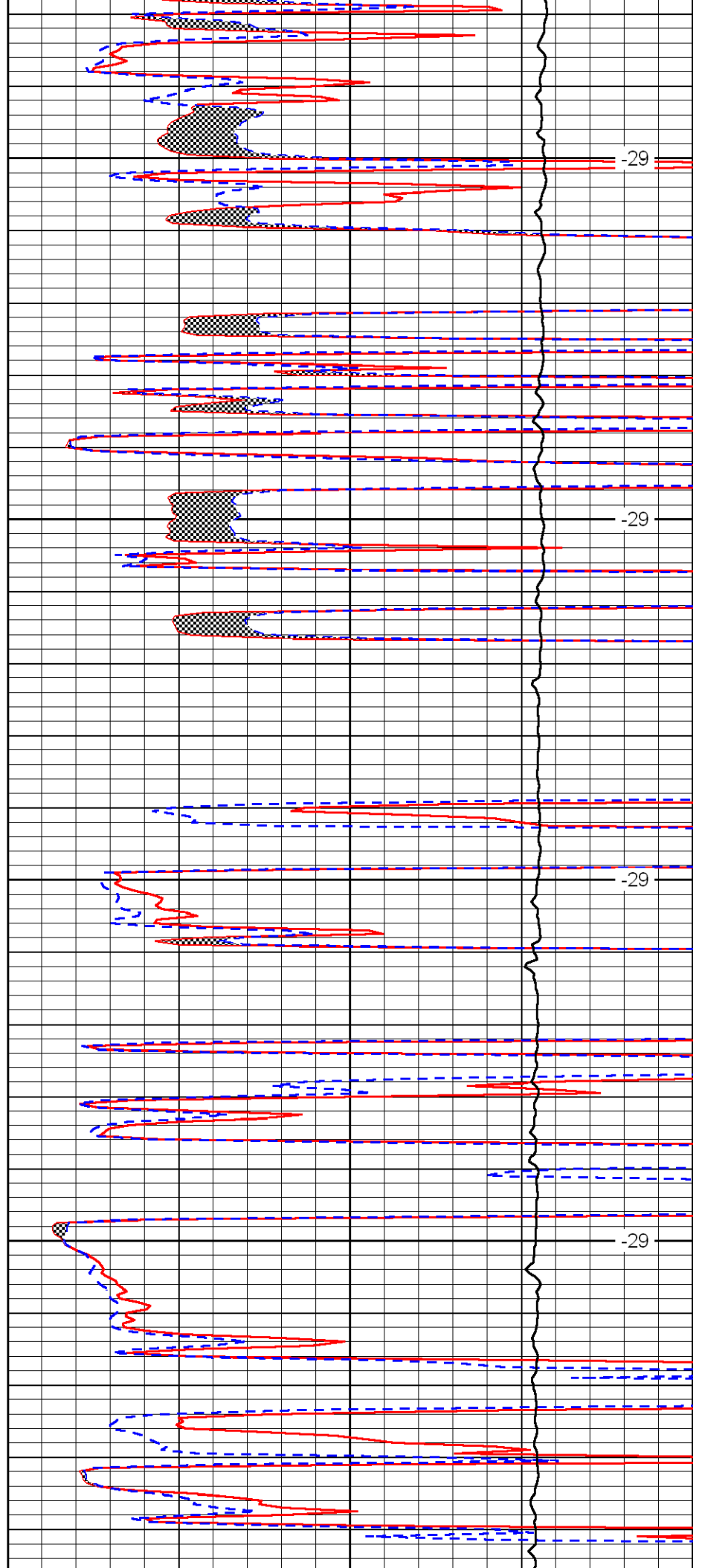


4050

4100

4150

4200

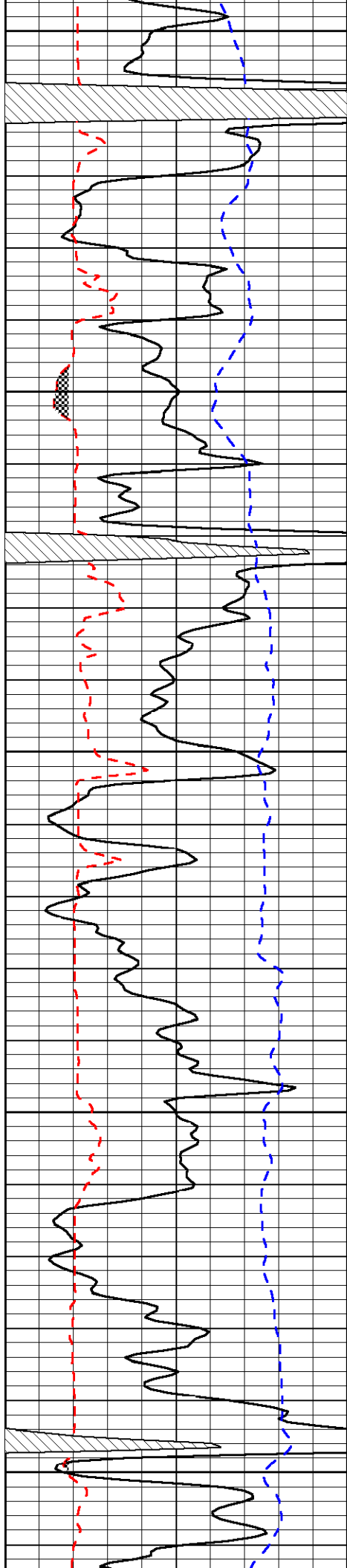


-29

-29

-29

-29



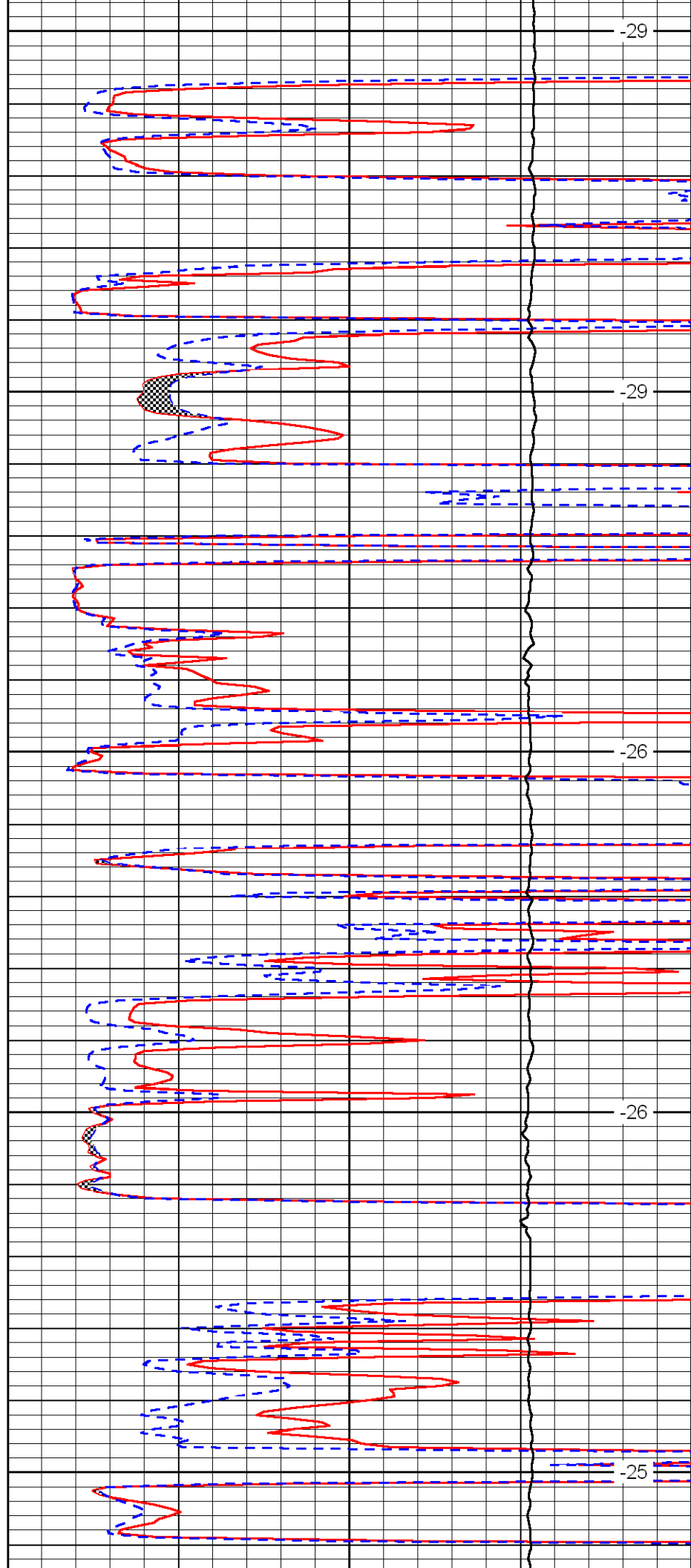
4250

4300

4350

4400

4450



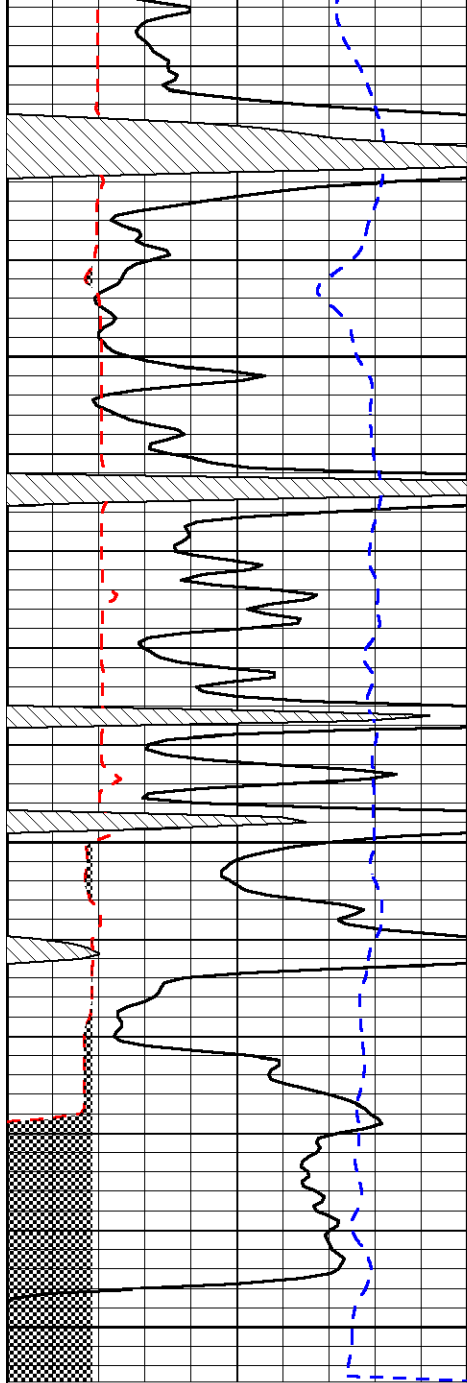
-29

-29

-26

-26

-25

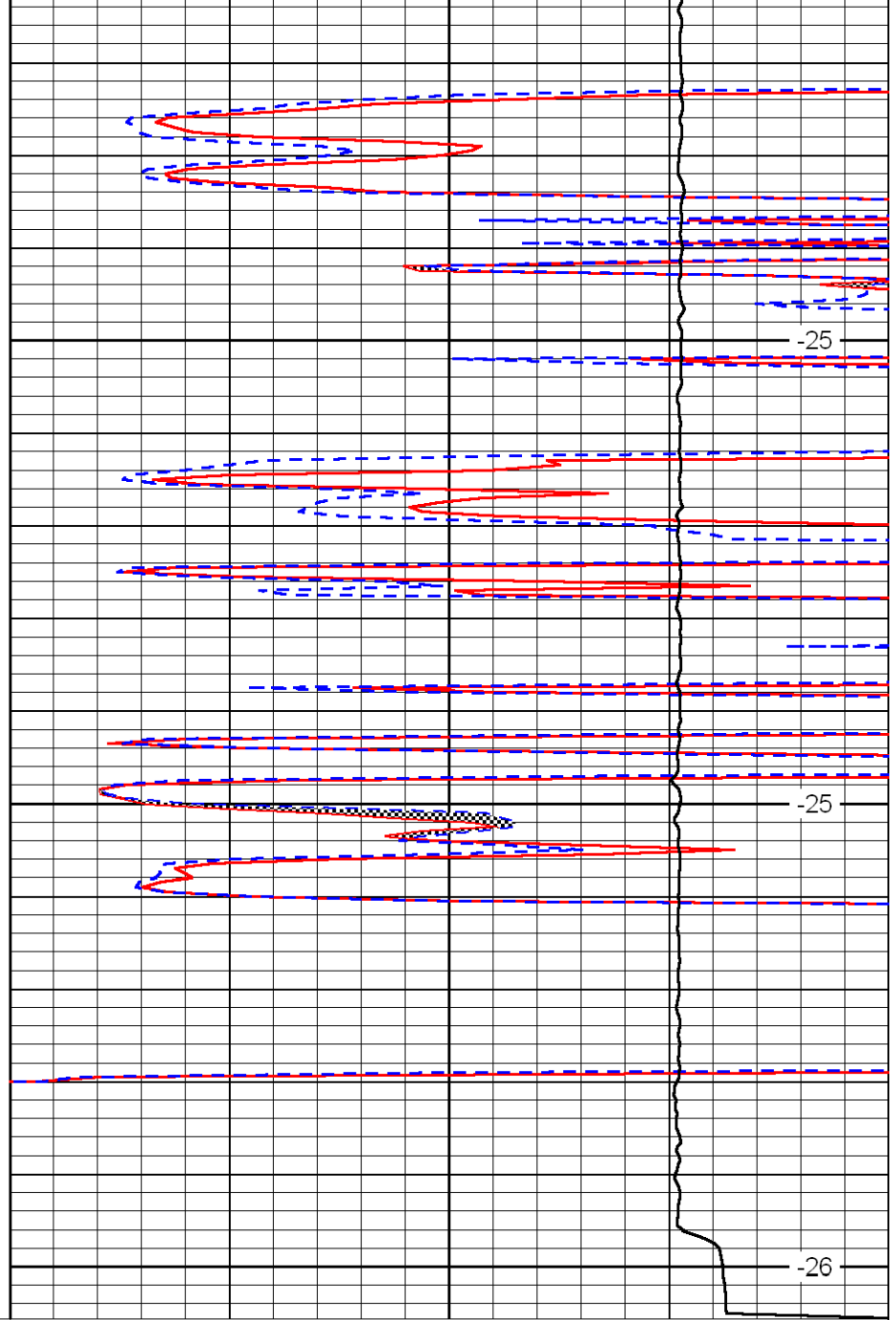


4500

4550

4600

0	Gamma Ray	150
6	Micro Log Caliper (GAPI)	16
-200	SP	0



-25

-25

-26

0	Micro Inverse 1 X 1	40
0	Micro Normal 2''	40
10000	Line Weight	0

LSPD