



Microresistivity Log

DIGITAL LOG (785) 625-3858

API No.	15-109-20,836-00-00		
Company	Murfin Drilling Company, Inc.		
Well	KWS No.1-32		
Field	Wildcat		
County	Logan	State	Kansas
Location	NW SE SE NW 2120' FNL & 2020' FWL		
Sec: 32	Twp: 12S	Rge: 32W	
Permanent Datum	Ground Level	Elevation 3064	Other Services CNL/CDL DIL/BHCS
Log Measured From	Kelly Bushing	10 Ft. Above Perm. Datum	
Drilling Measured From	Frotkelly Bushing		K.B. 3074 D.F. 3064 G.L.

Date	3/28/2009	
Run Number	Two	
Depth Driller	4745	
Depth Logger	4745	
Bottom Logged Interval	4744	
Top Log Interval	3700	
Casing Driller	8.625 @ 219	
Casing Logger	213	
Bit Size	7.875	
Type Fluid in Hole	Chemical	
Salinity, ppm CL	4.500	
Density / Viscosity	9.1	53
pH / Fluid Loss	11.5	6.0
Source of Sample	Flowline	
Rm @ Meas. Temp	.85 @ 68	
Rmf @ Meas. Temp	.64 @ 68	
Rmc @ Meas. Temp	1.15 @ 68	
Source of Rmf / Rmc	Charts	
Rm @ BHT	.47 @ 123	
Operating Rig Time	4 1/2 Hours	
Max Rec. Temp. F	123	
Equipment Number	15	
Location	Hays	
Recorded By	C. Desaire	
Witnessed By	Tom Funk	

<<< Fold Here >>>

All interpretations are opinions based on inferences from electrical or other measurements and we cannot and do not guarantee the accuracy or correctness of any interpretation, and we shall not, except in the case of gross or willful negligence on our part, be liable or responsible for any loss, costs, damages, or expenses incurred or sustained by anyone resulting from any interpretation made by any of our officers, agents or employees. These interpretations are also subject to our general terms and conditions set out in our current Price Schedule.

Comments

Thank you for using Log-Tech, Inc.
 (785) 625-3858

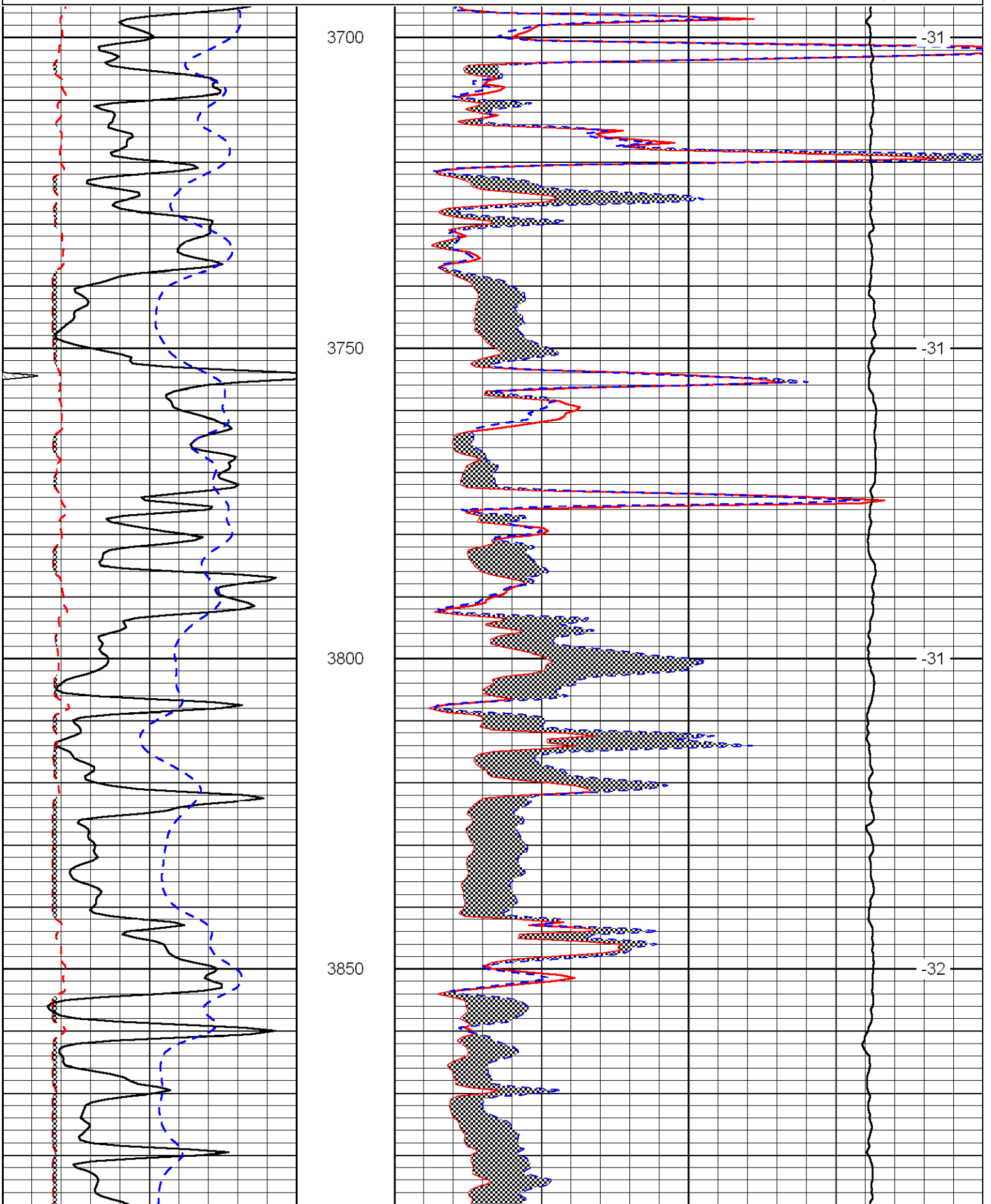
 Oakley, S to Gove Rd, 3 W, 3/4 N, E Into

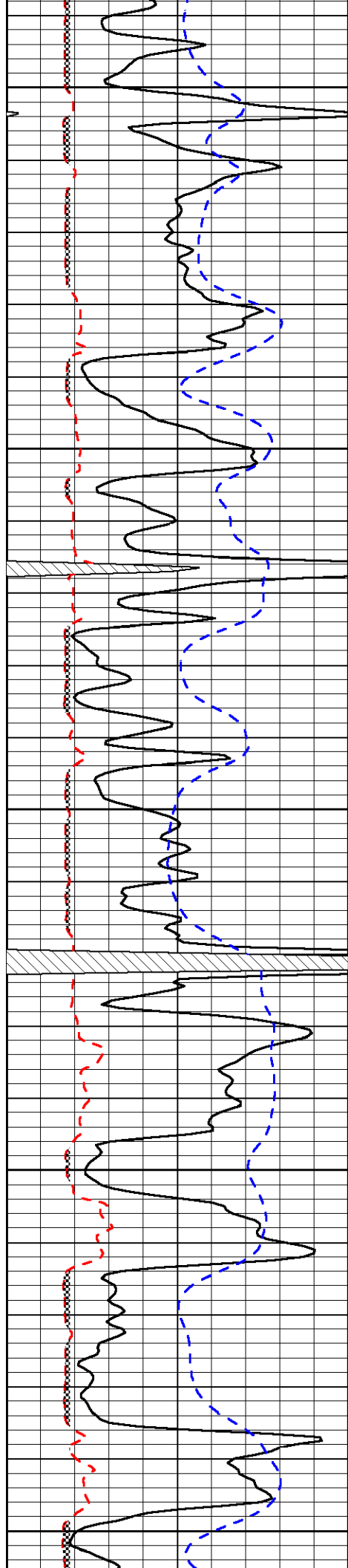
Database File: c:\warrior\data\murfin_kws no.1-32\mrfnkwsd.db
 Dataset Pathname: dil/mrfnstk
 Presentation Format: micro
 Dataset Creation: Sun Mar 29 13:17:27 2009
 Charted by: Depth in Feet scaled 1:240

0	Gamma Ray	150
6	Micro Log Caliper (in)	16
-200	SP (MV)	0

0	Micro Inverse 1 X 1 (Ohm-m)	40
0	Micro Normal 2" (Ohm-m)	40
10000	Line Weight (lb)	0

LSPD
(ft/min)





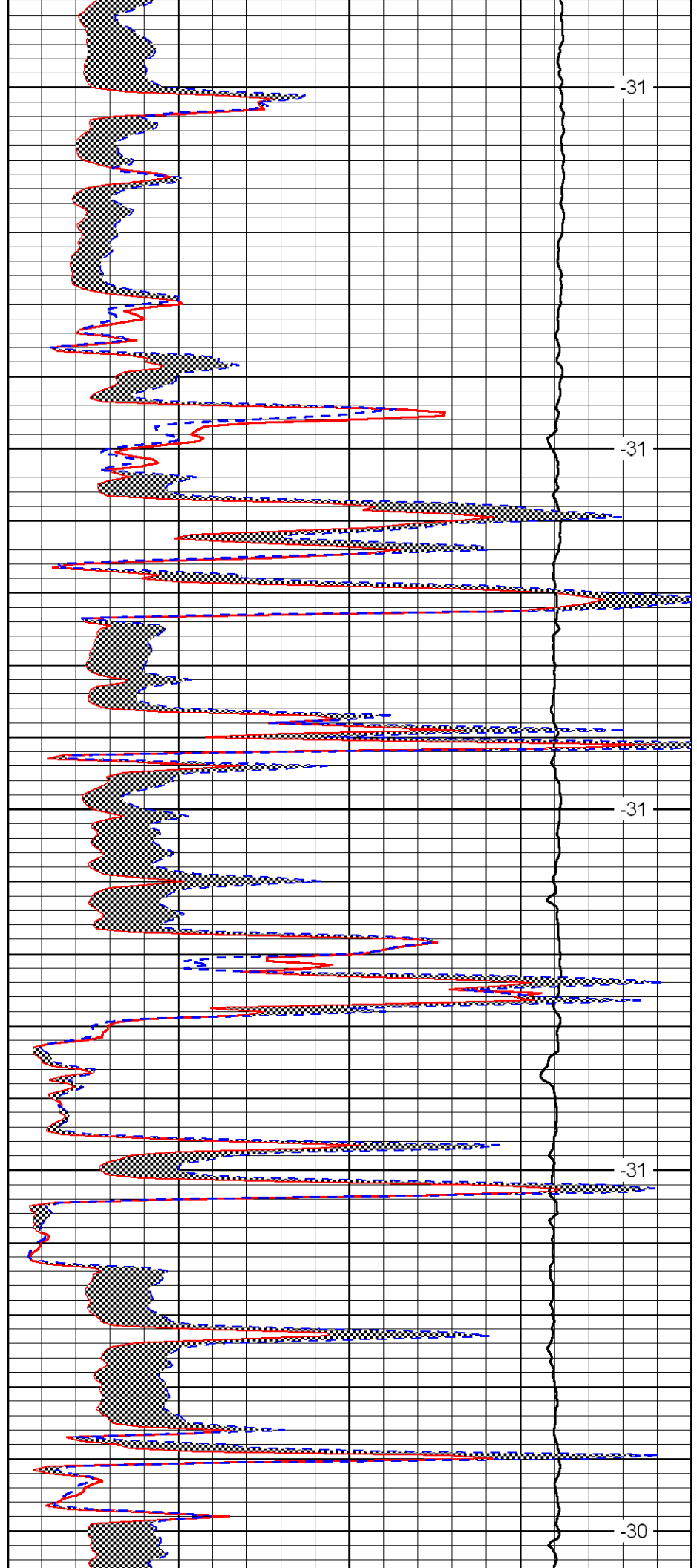
3900

3950

4000

4050

4100



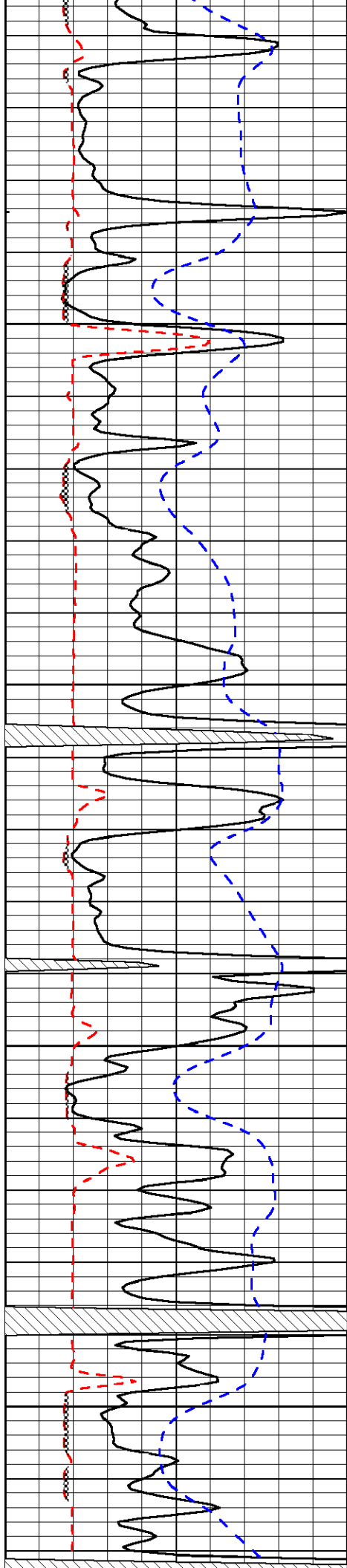
-31

-31

-31

-31

-30

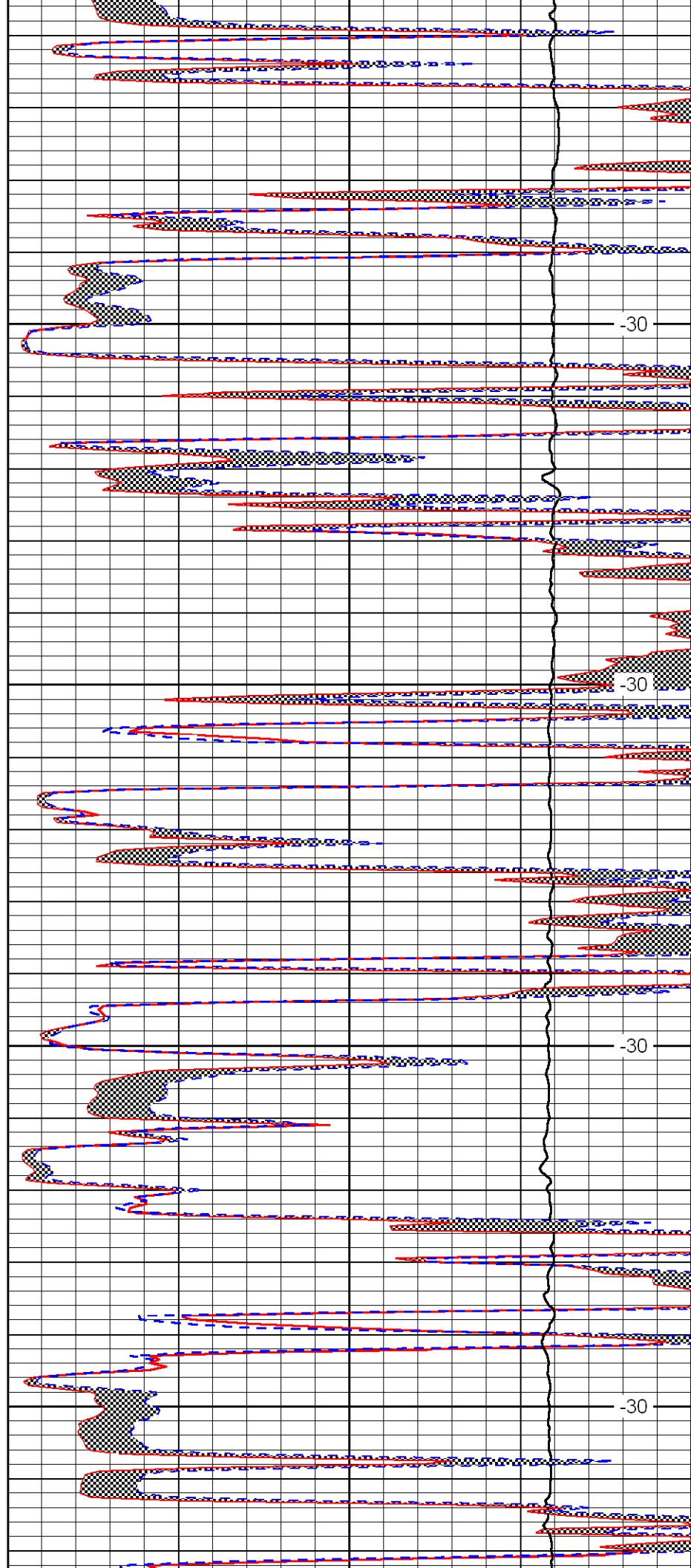


4150

4200

4250

4300

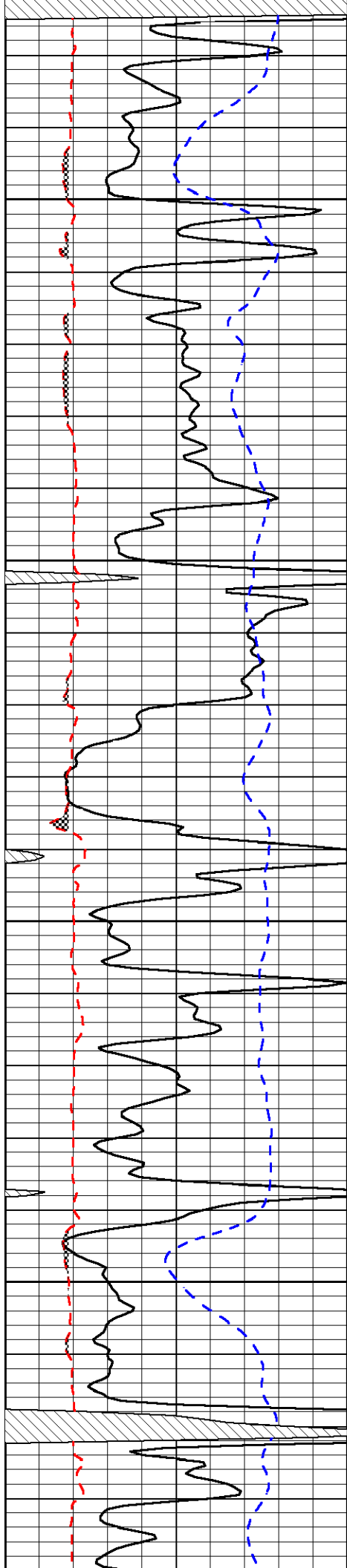


-30

-30

-30

-30

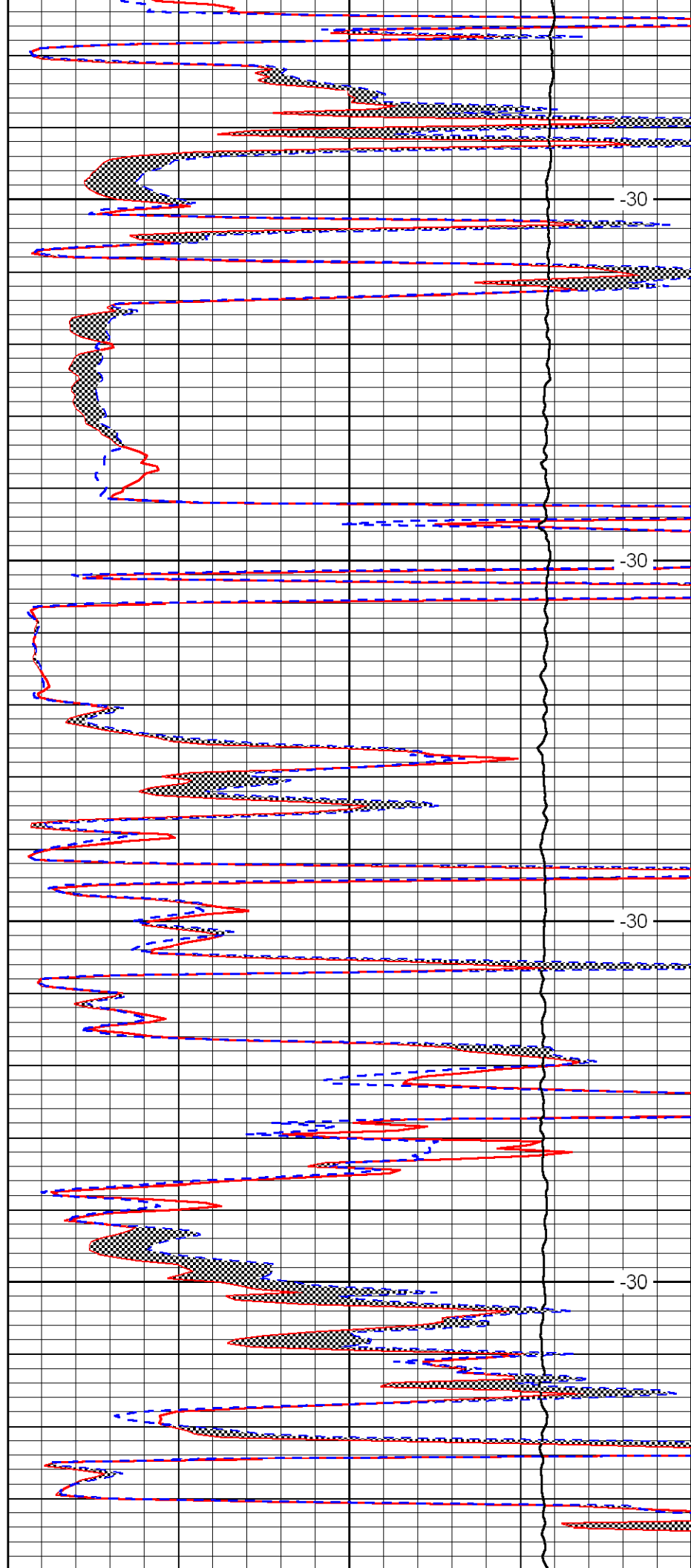


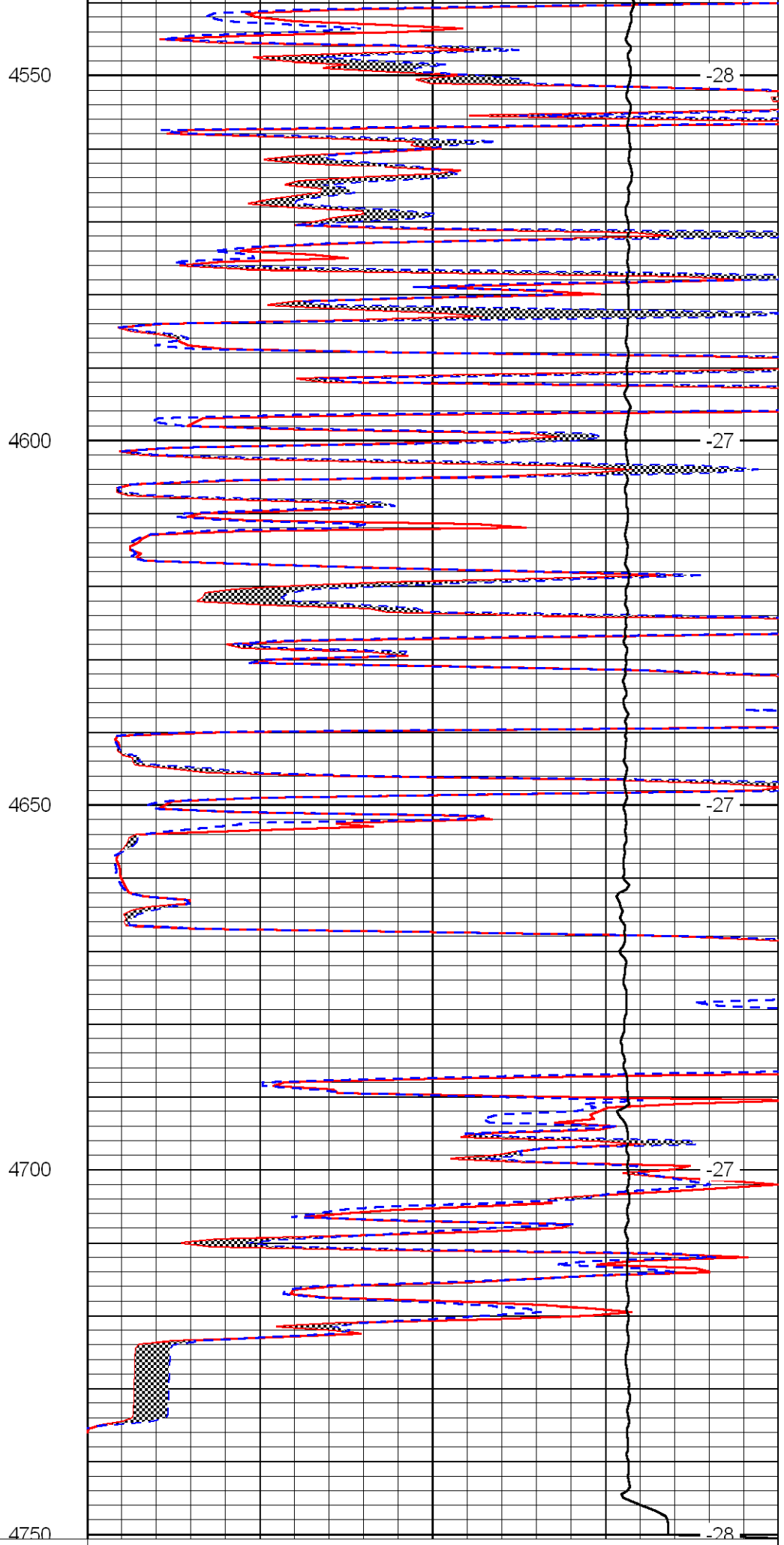
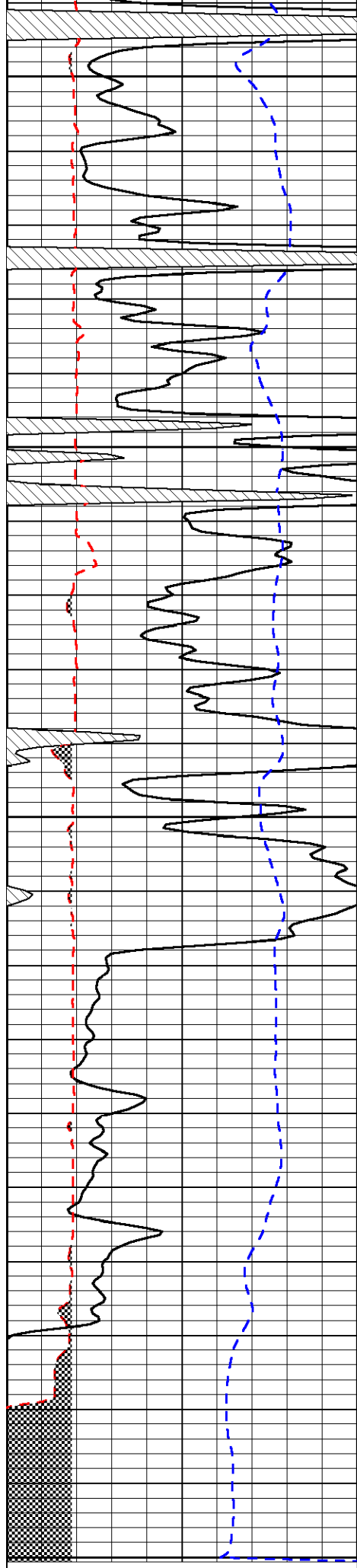
4350

4400

4450

4500





6	Micro Log Caliper (in)	16
-200	SP (MV)	0

0	Micro Normal 2" (Ohm-m)	40
10000	Line Weight (lb)	0

LSPD (ft/min)
