



**Borehole Compensated
Sonic Log**

DIGITAL LOG (785) 625-3858

API No. 15-109-20,836-00-00	Company Murfin Drilling Company, Inc.	Location NW SE SE NW 2120' FNL & 2020' FWL	Other Services CNL/CDL MEL/DIL
Well KWS No.1-32	County Logan		
Field Wildcat	State Kansas		
Sec: 32	Twp: 12S	Rge: 32W	Elevation K.B. 3074 D.F. 3064 G.L. 3064
Permanent Datum Log Measured From Drilling Measured From	Ground Level Kelly Bushing Kelly Bushing	Elevation 3064 10 Ft. Above Perm. Datum	

Date	3/28/2009
Run Number	Two
Type Log	BHC Sonic
Depth Driller	4745
Depth Logger	4745
Bottom Logged Interval	4734
Top Logged Interval	200
Type Fluid In Hole	Chemical
Salinity, PPM CL	4,500
Density	9.1
Level	Full
Max. Rec. Temp. F	123
Operating Rig Time	4 1/2 Hours
Equipment -- Location	15 Hays
Recorded By	C. Desaire
Witnessed By	Tom Funk

Run No	Bit	Borehole Record		Casing Record	
		From	To	From	To
1	12.25	00	219	8.625	24#
2	7.875	219	4745		

<<< Fold Here >>>

All interpretations are opinions based on inferences from electrical or other measurements and we cannot and do not guarantee the accuracy or correctness of any interpretation, and we shall not, except in the case of gross or willful negligence on our part, be liable or responsible for any loss, costs, damages, or expenses incurred or sustained by anyone resulting from any interpretation made by any of our officers, agents or employees. These interpretations are also subject to our general terms and conditions set out in our current Price Schedule.

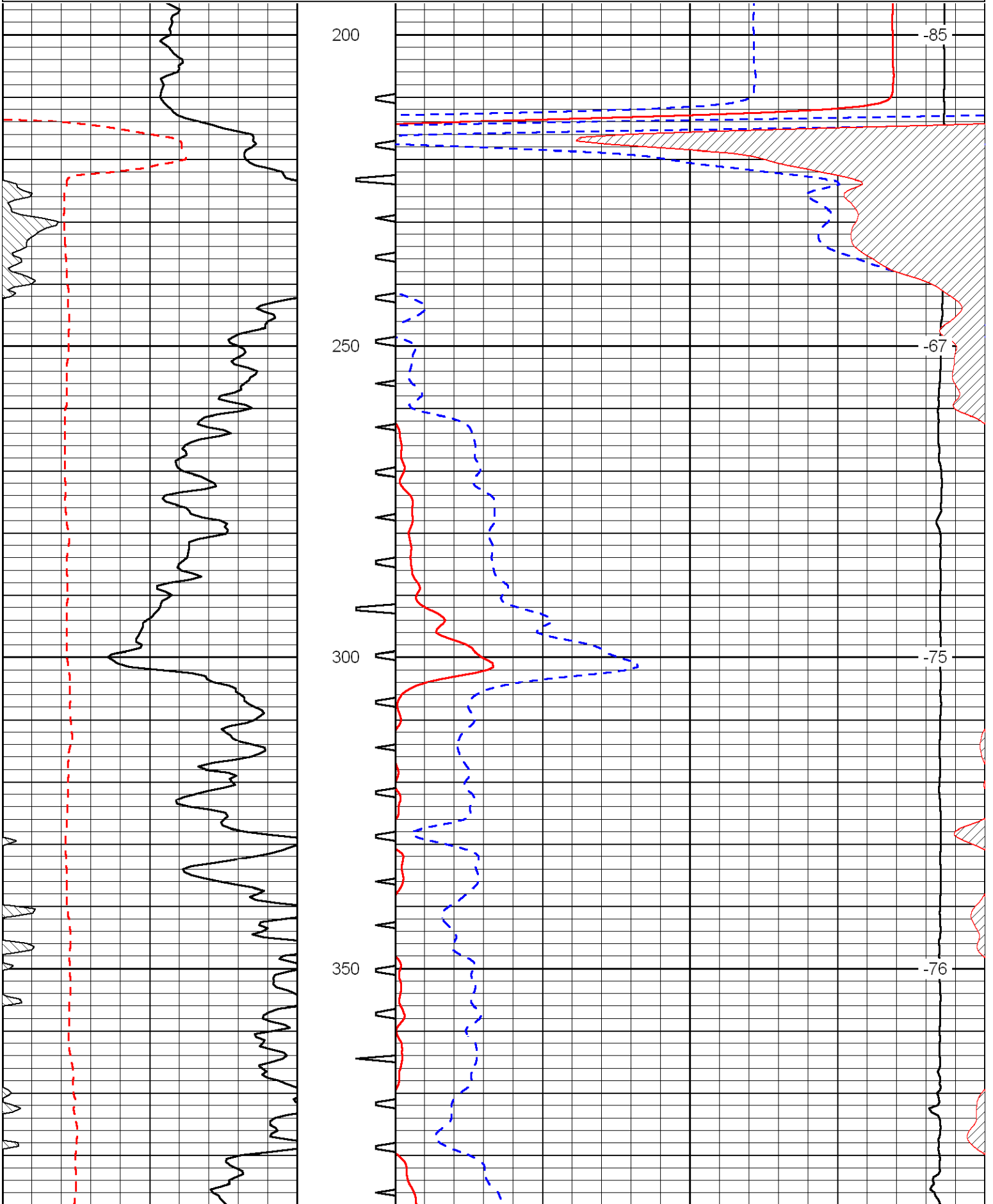
Comments

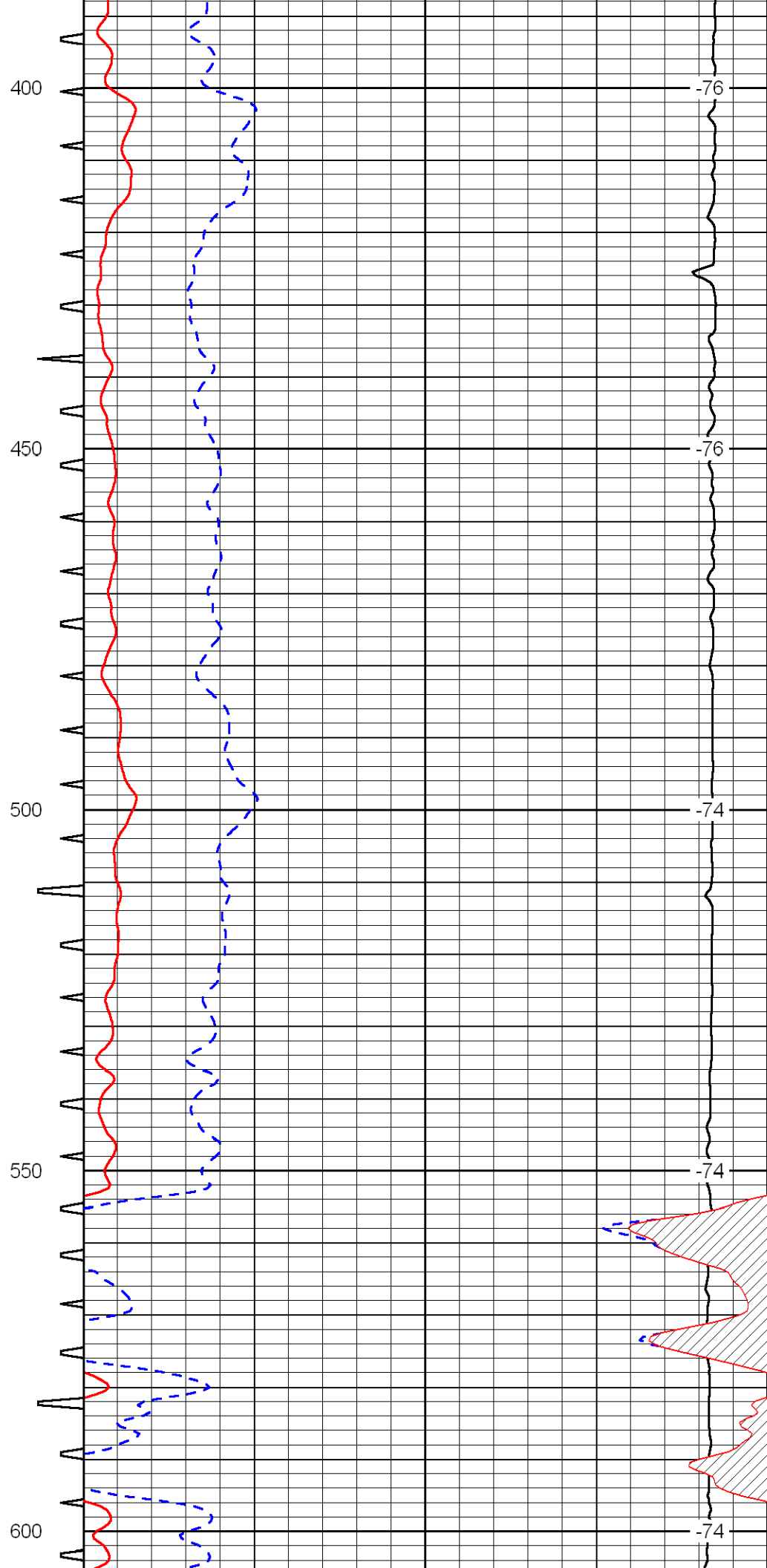
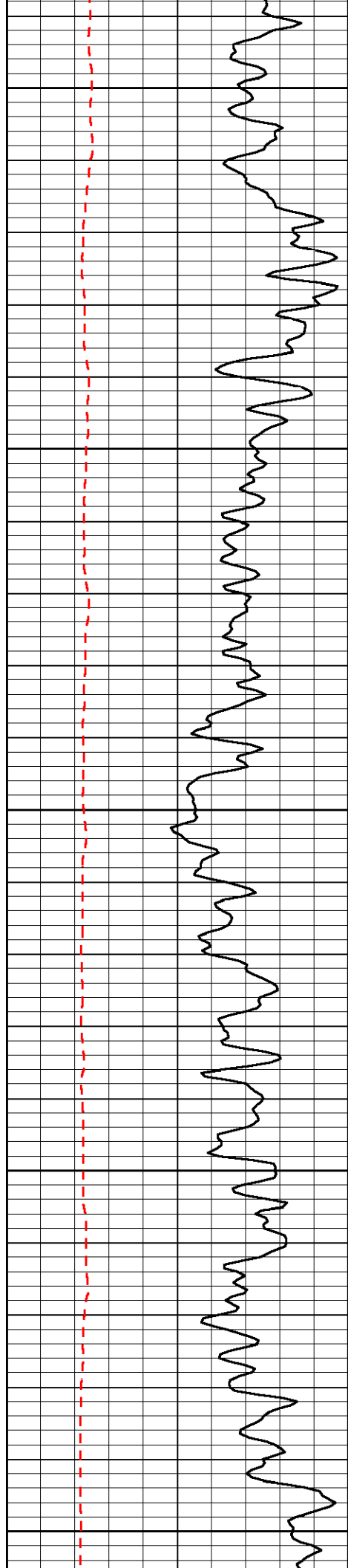
Thank you for using Log-Tech, Inc.
(785) 625-3858

Oakley, S to Gove Rd, 3 W, 3/4 N, E Into

Database File: c:\warrior\data\murfin_kws no.1-32\mrfnkws hd.db
 Dataset Pathname: dil/mrfnstk
 Presentation Format: sonic
 Dataset Creation: Sun Mar 29 13:17:27 2009
 Charted by: Depth in Feet scaled 1:240

0	Gamma Ray	150	Sonic Int	140	Delta Time (usec/ft) (usec/ft)	40
150	Gamma Ray	300	5 (msec)	0	SPOR (pu)	-10
6	Caliper (in)	16		10000	LTEN (lb) (lb)	0
						LSPD (ft/min)





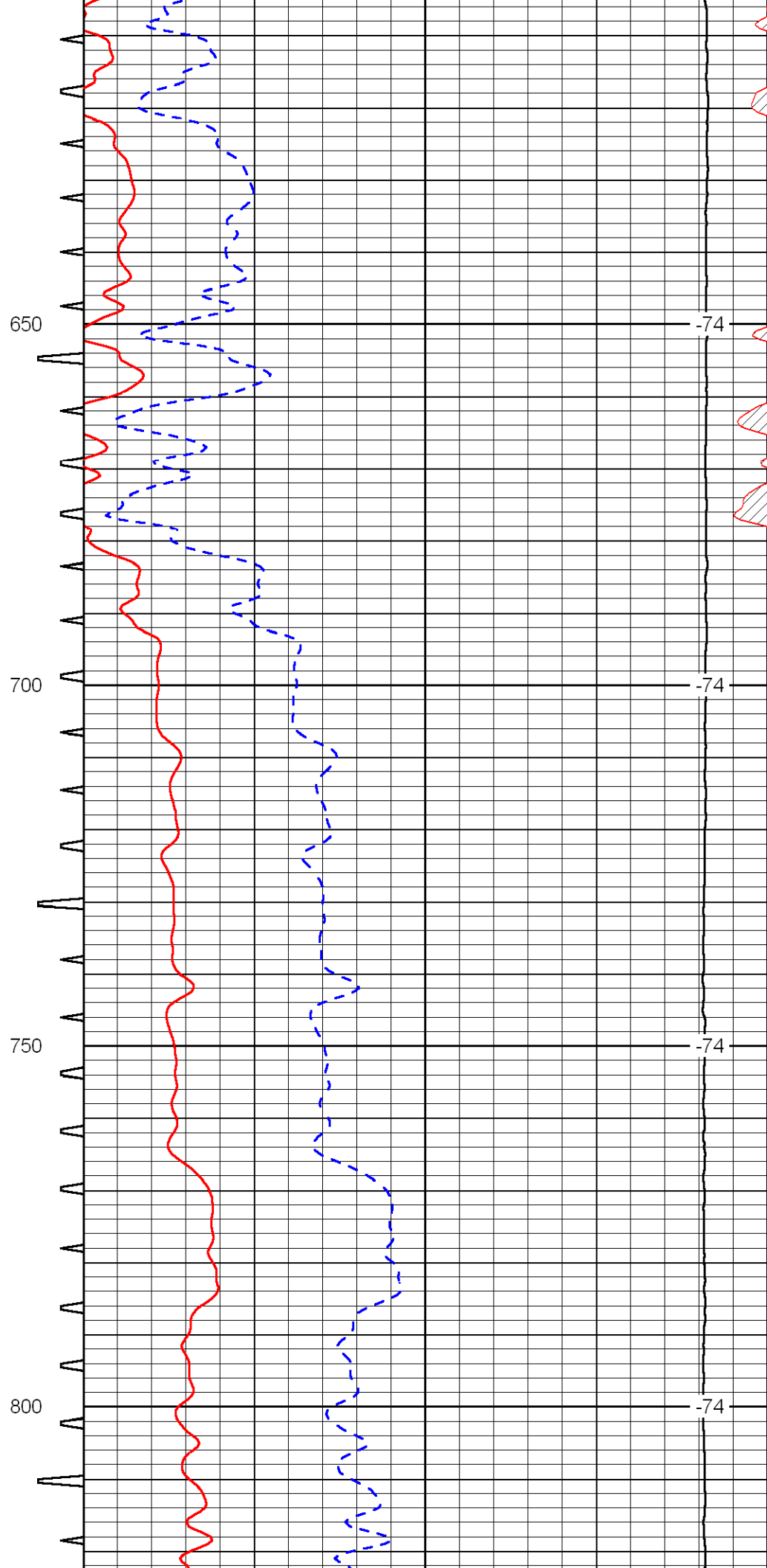
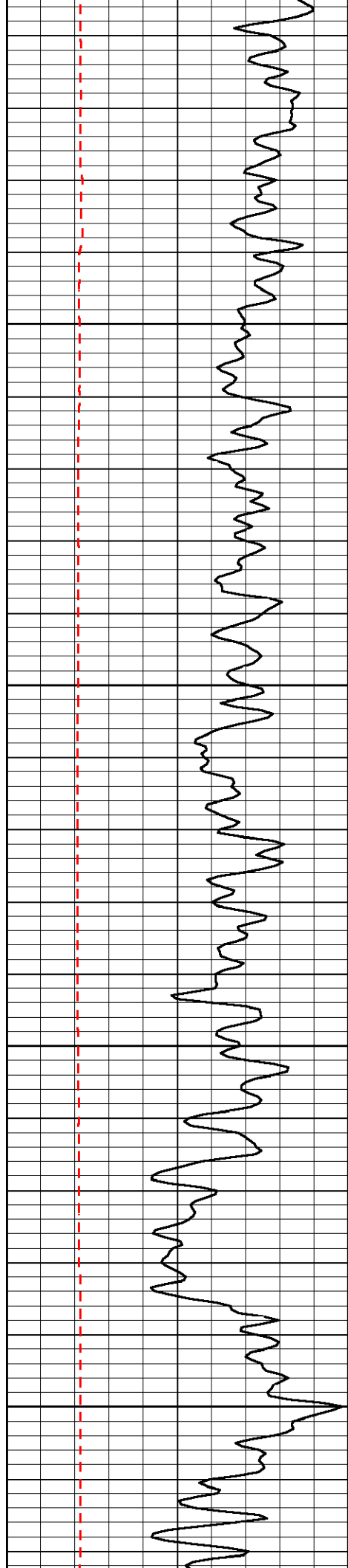
-76

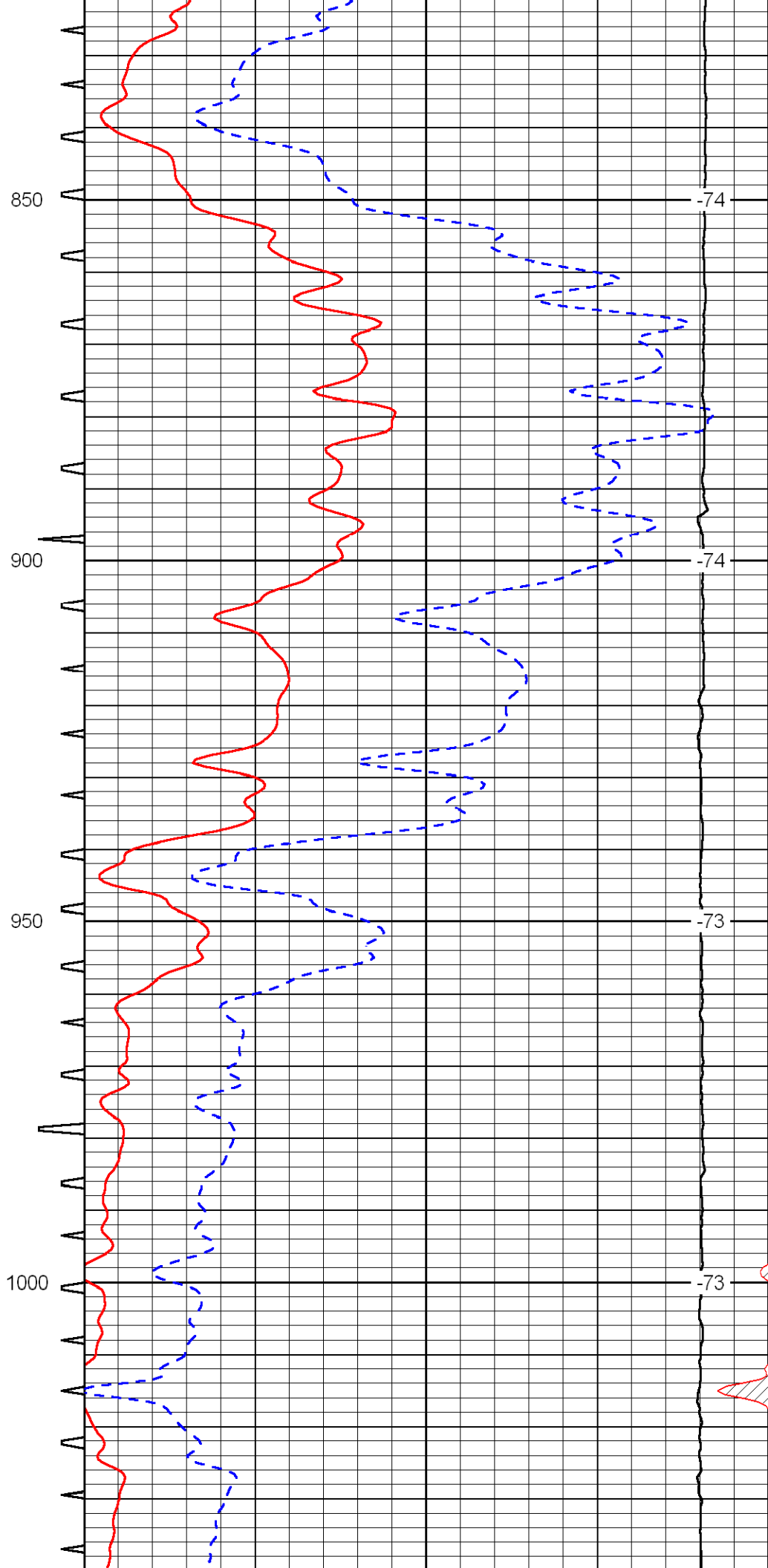
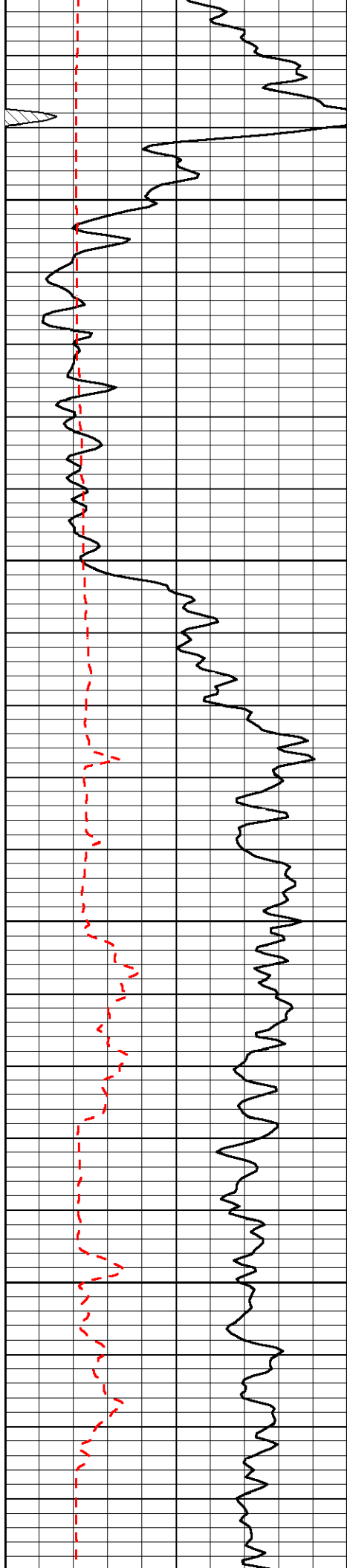
-76

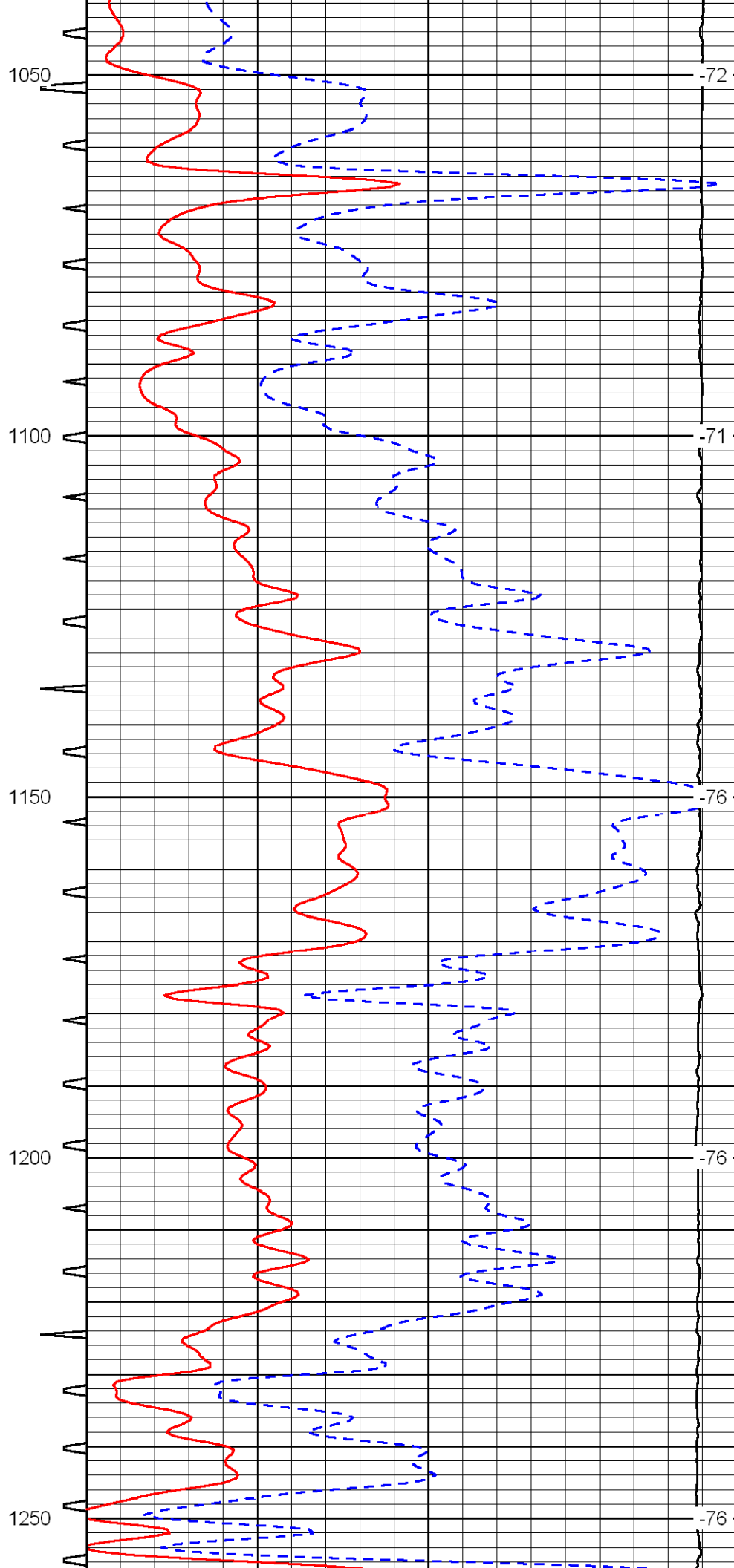
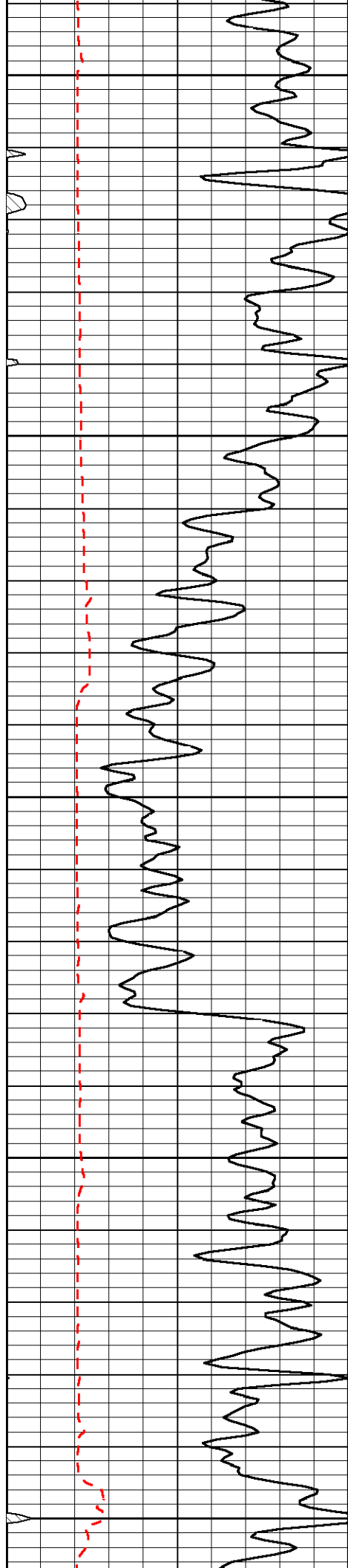
-74

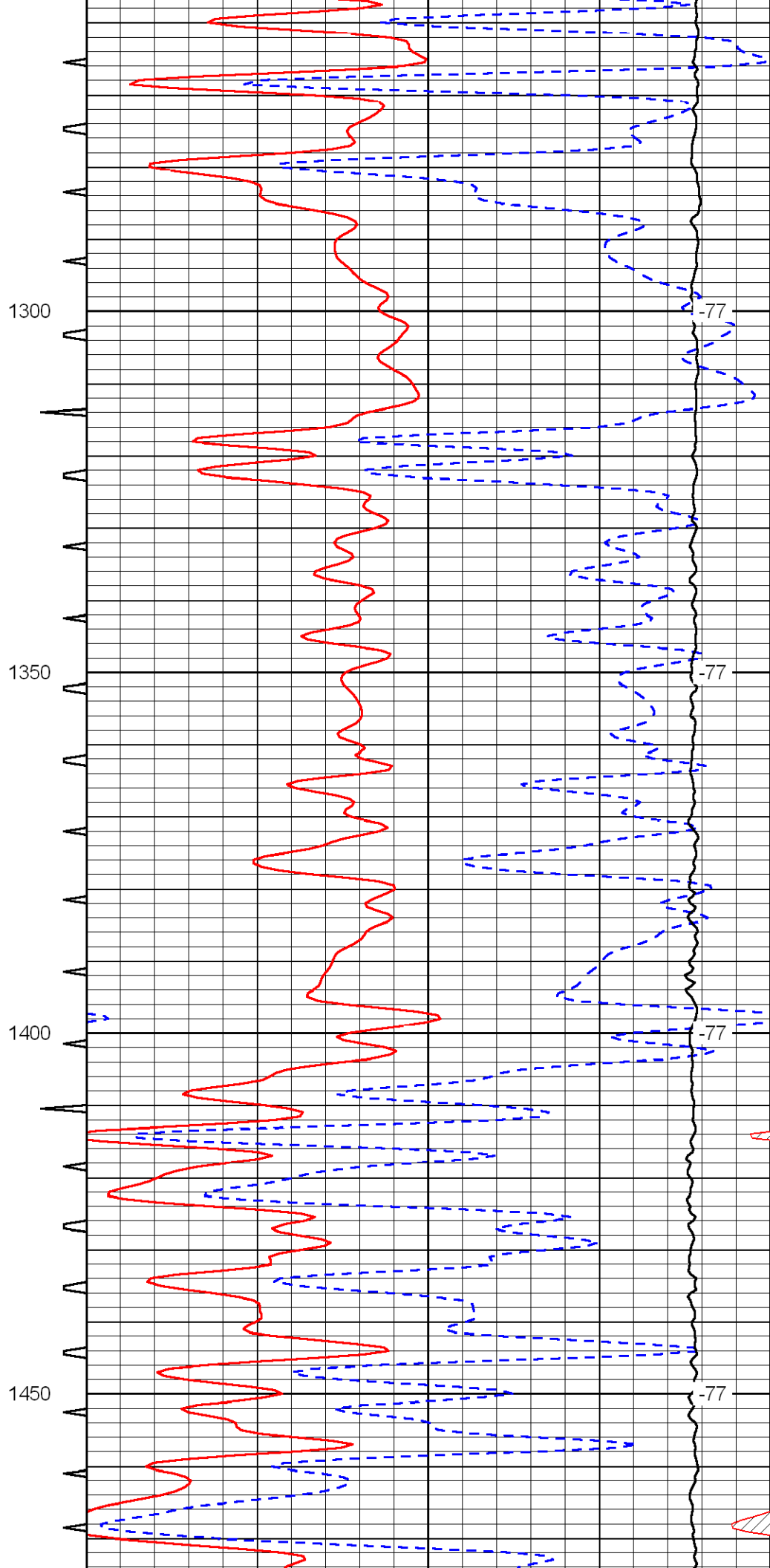
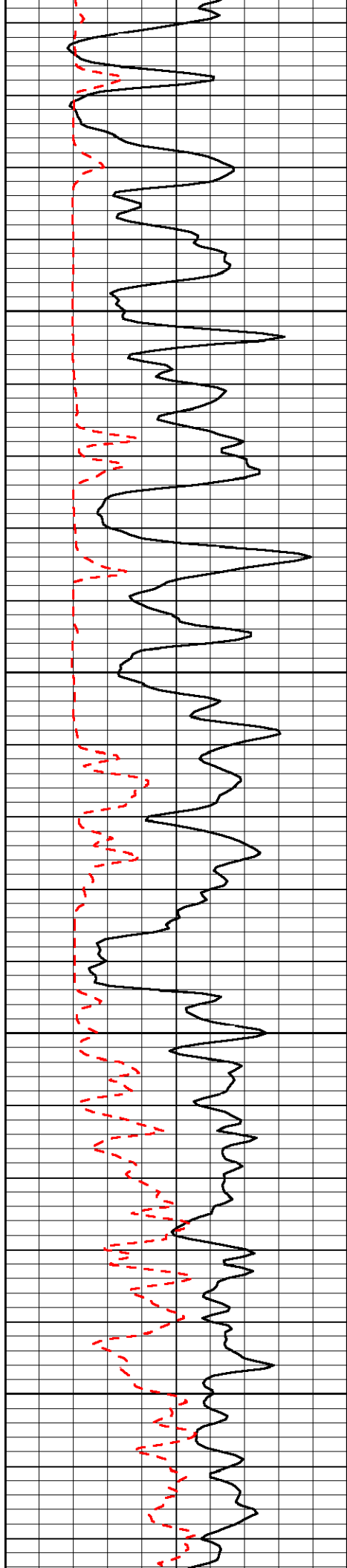
-74

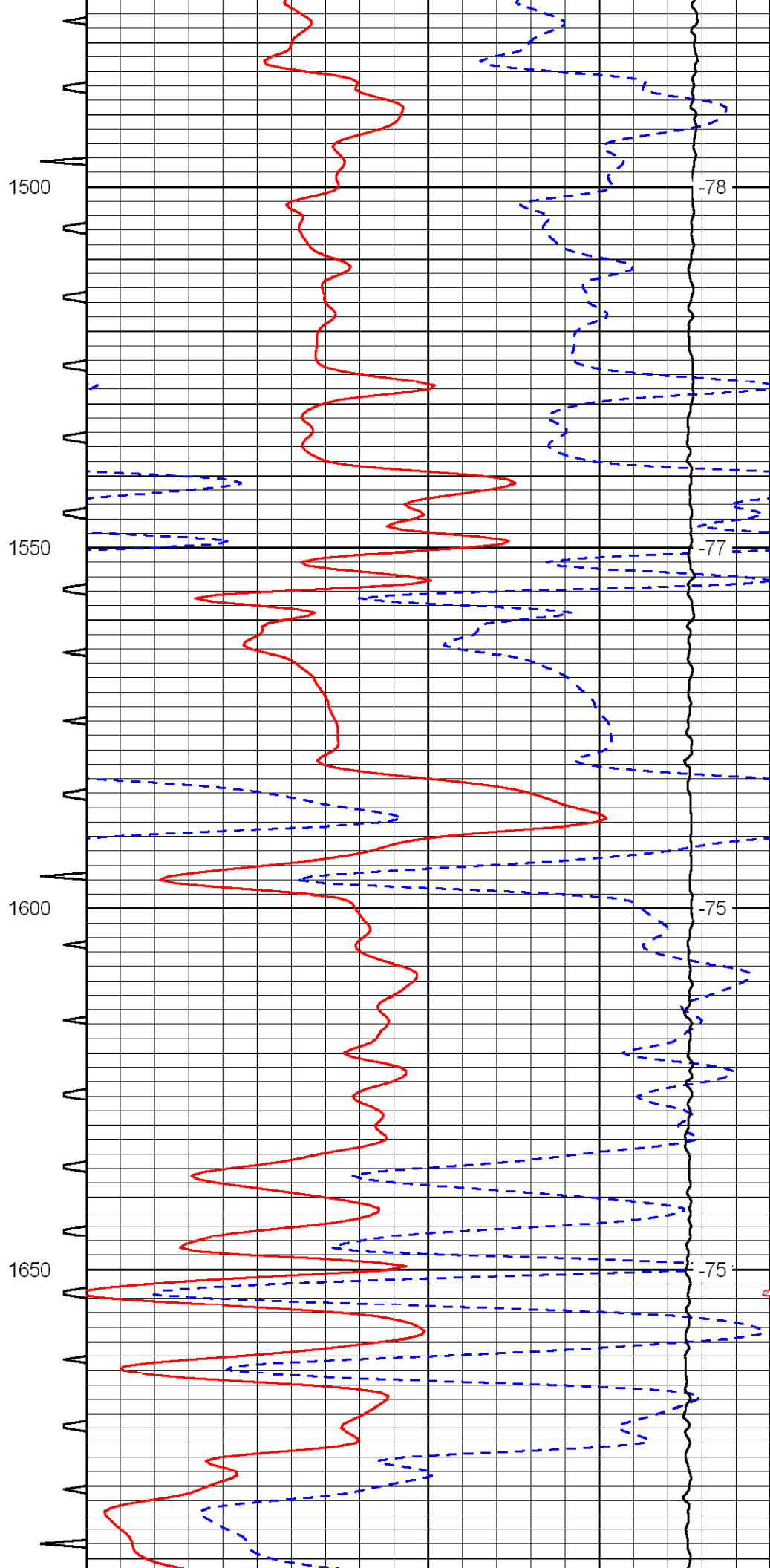
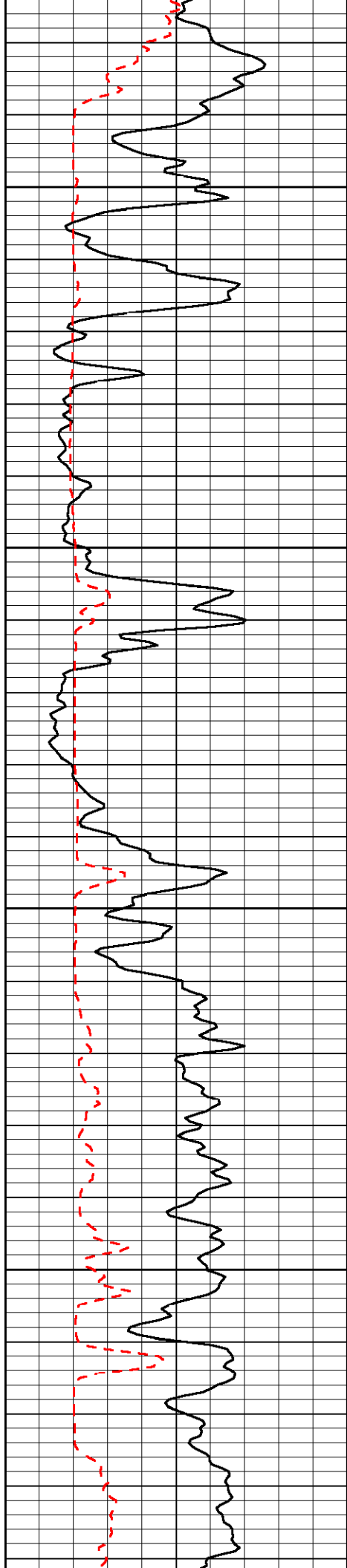
-74

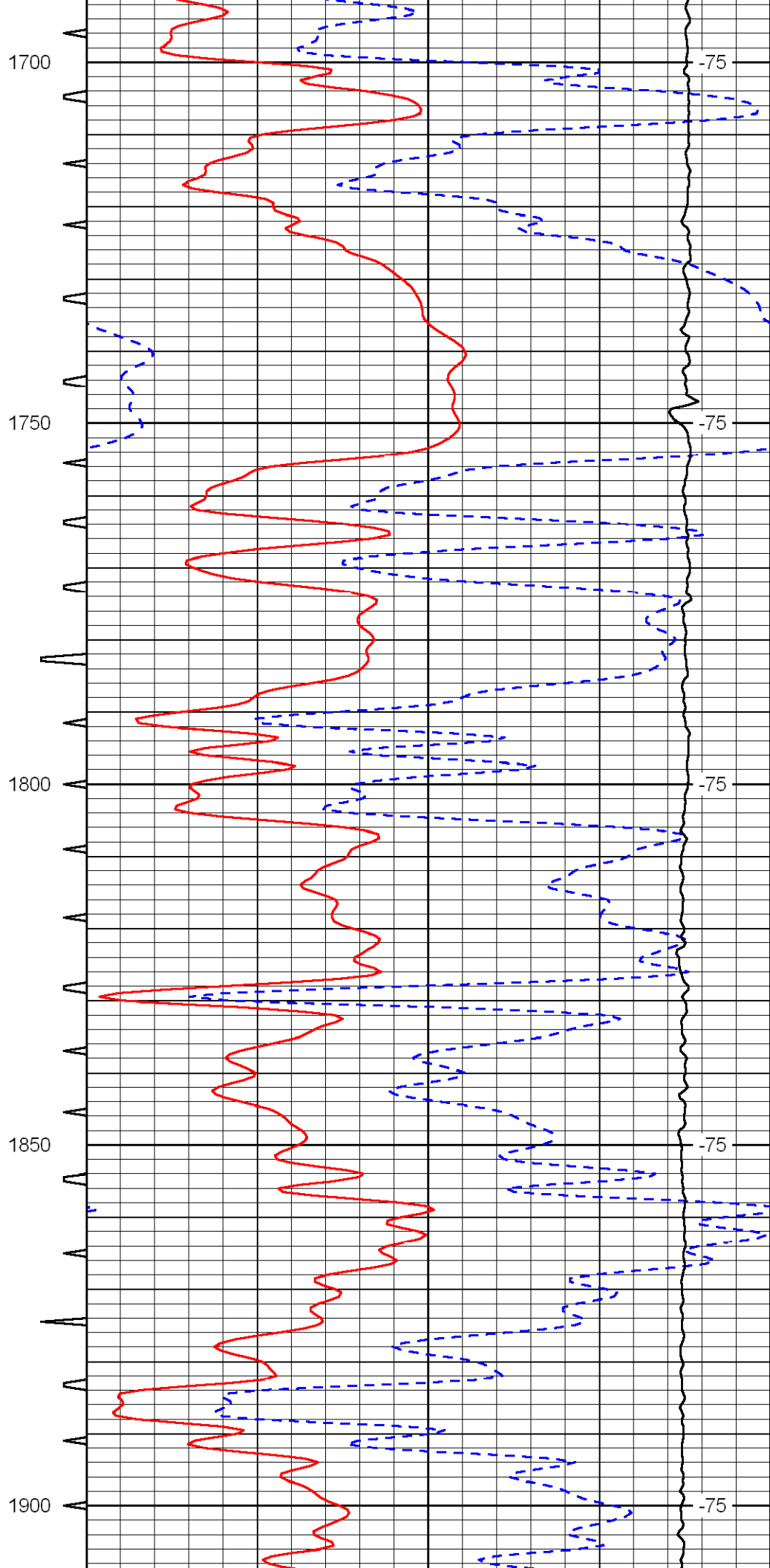
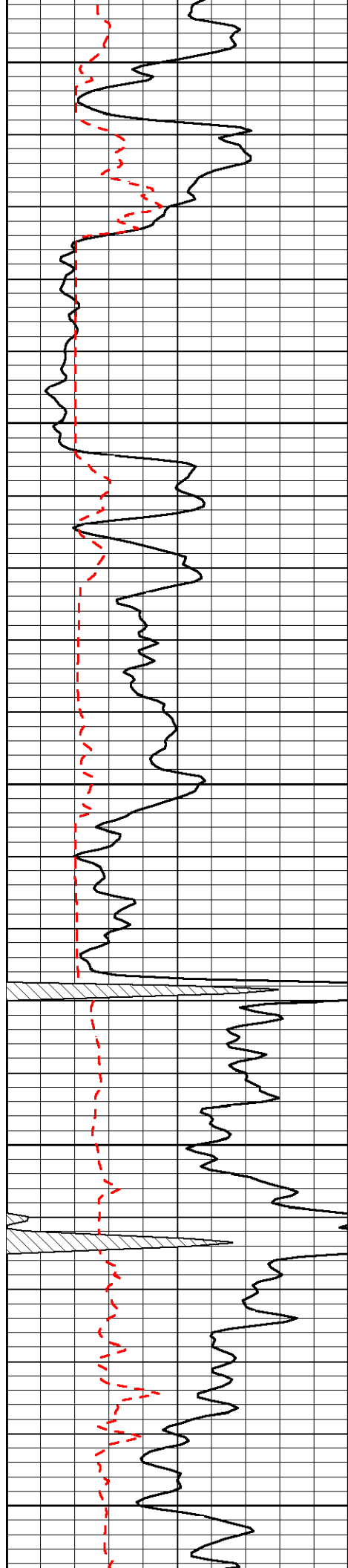


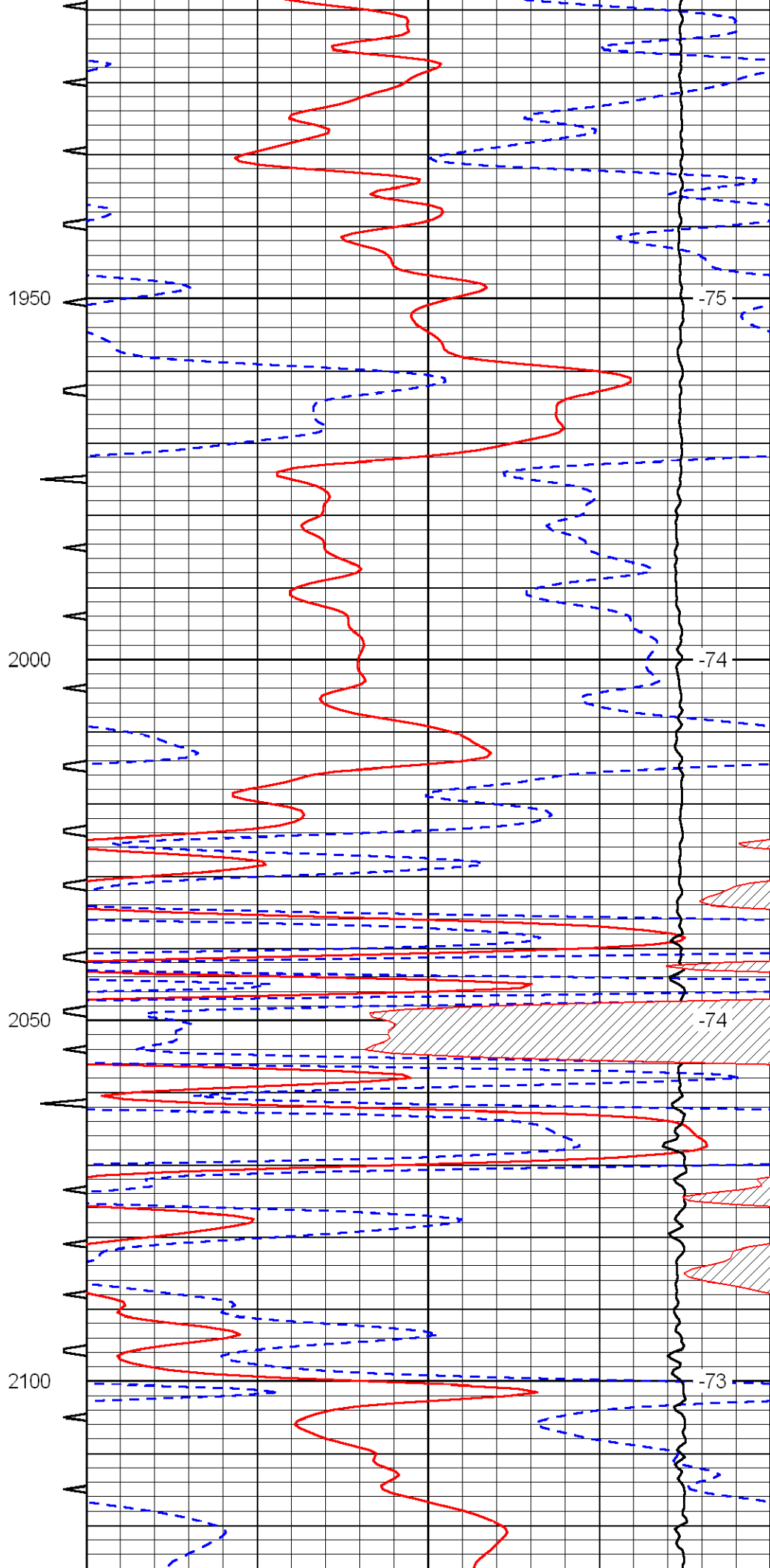
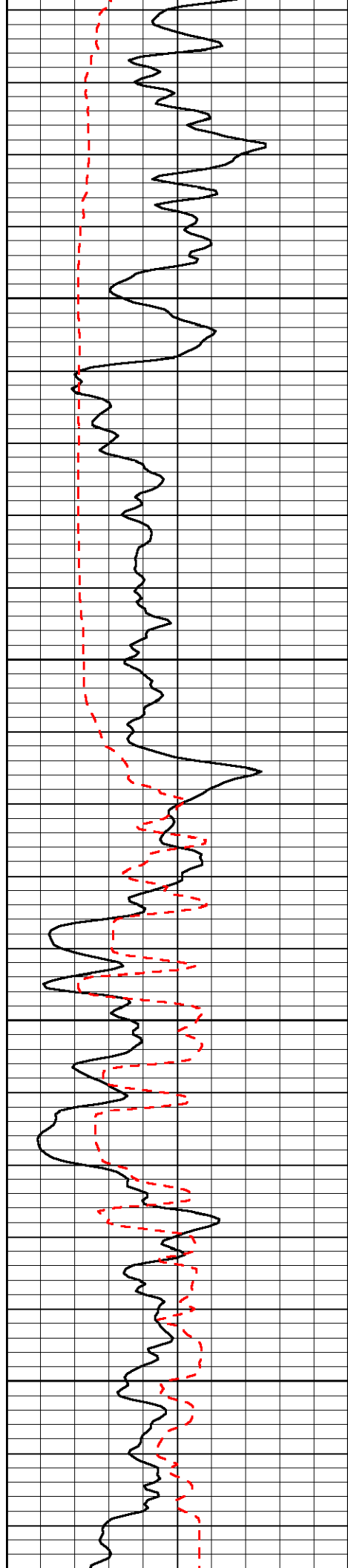


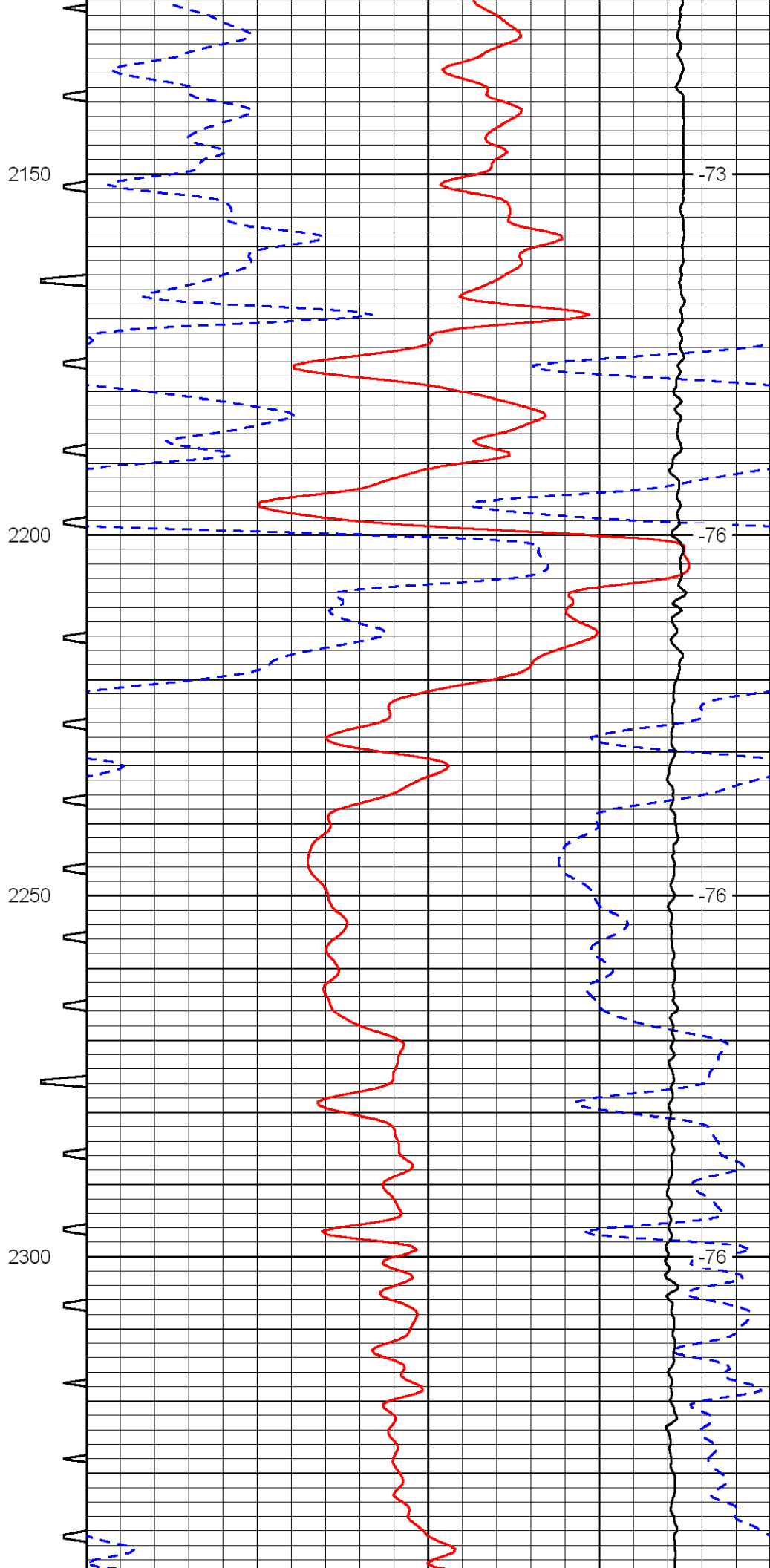
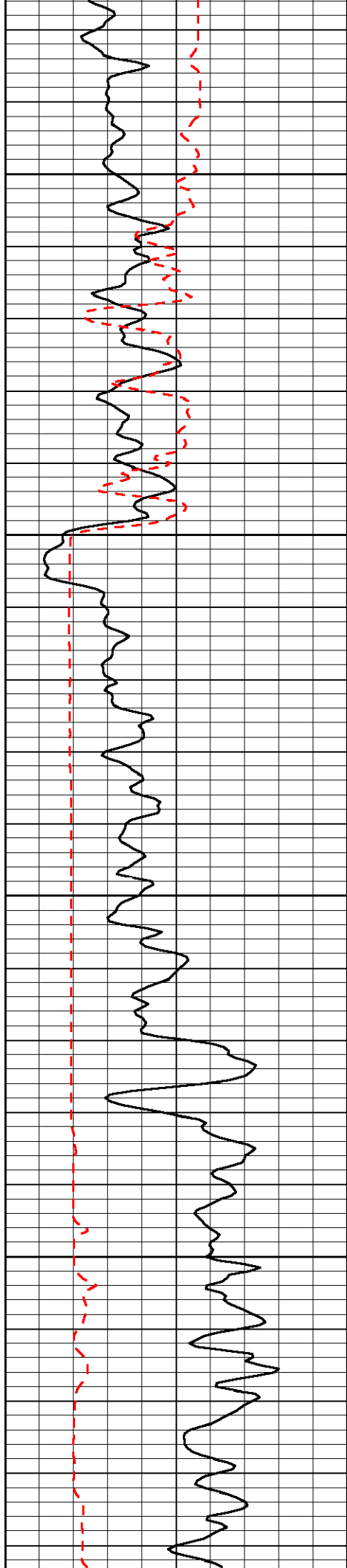


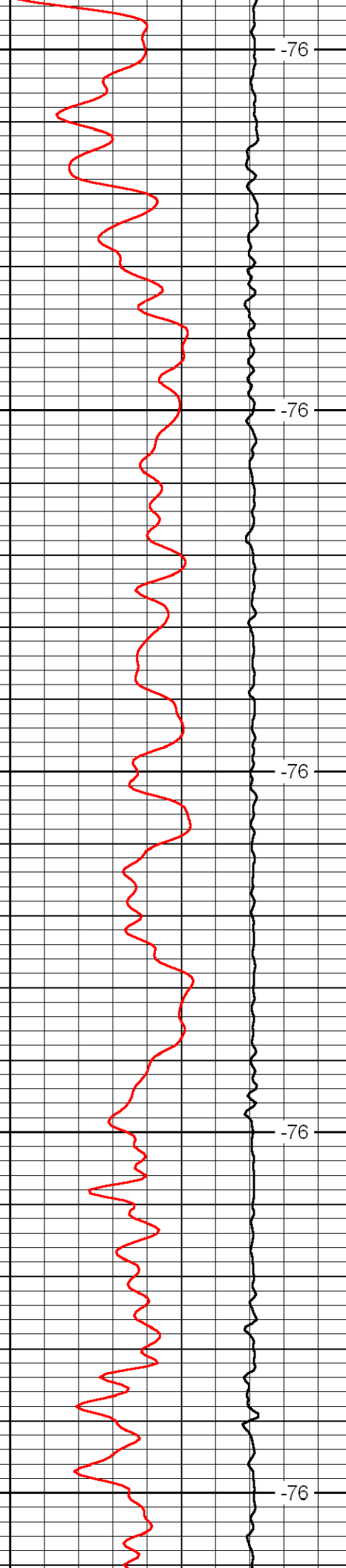
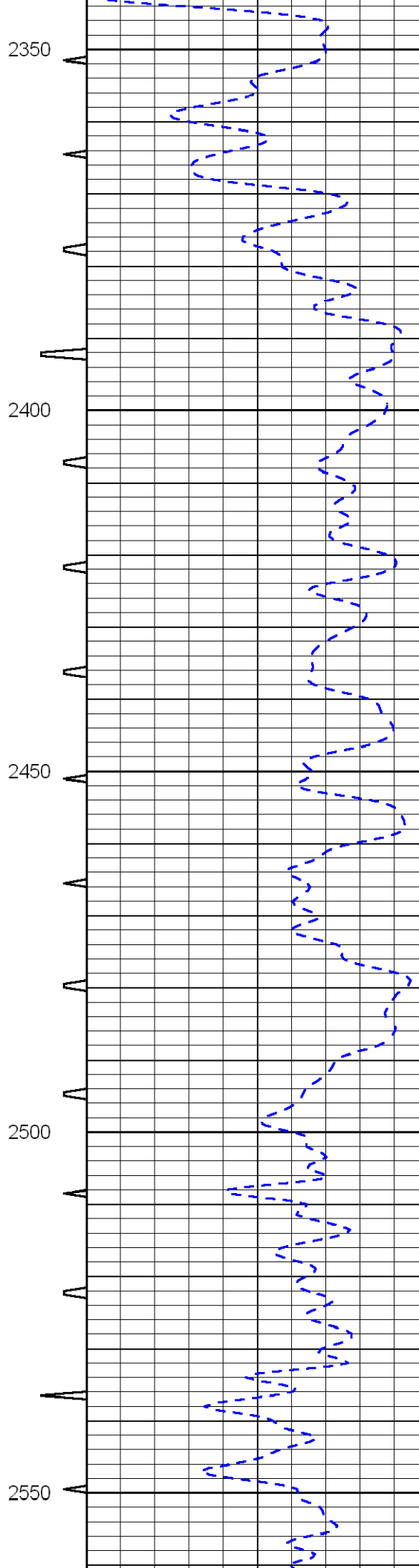
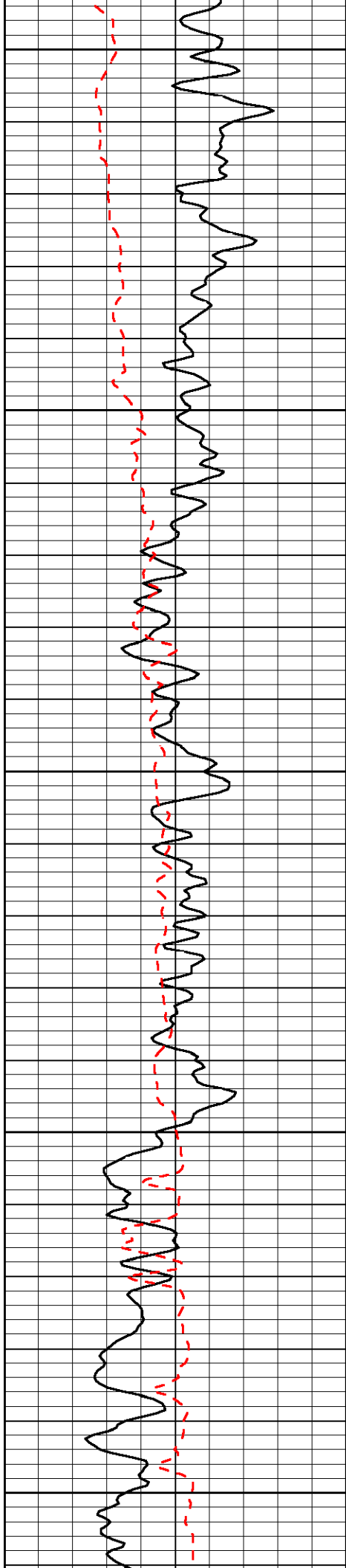












2350

-76

2400

-76

2450

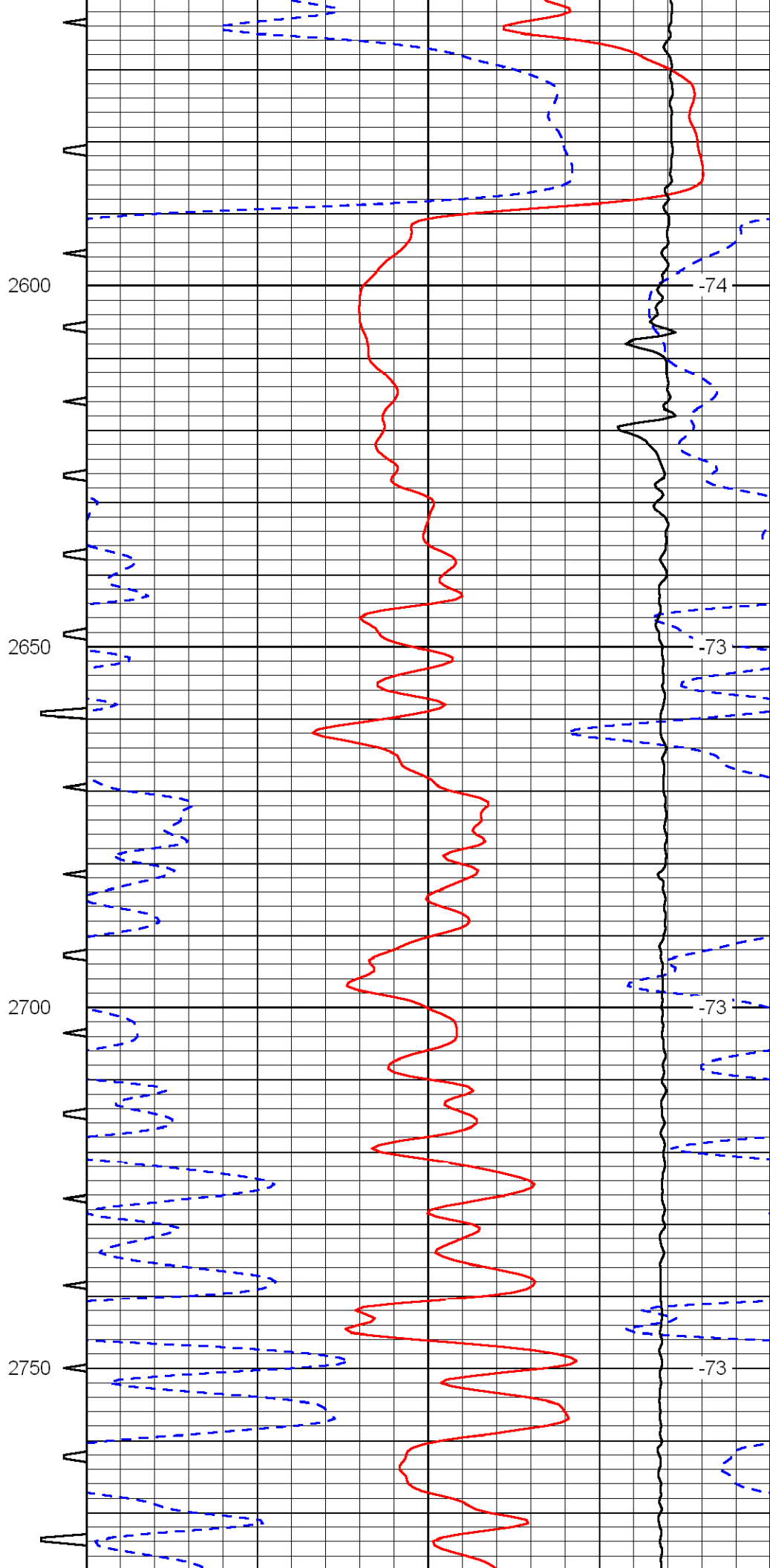
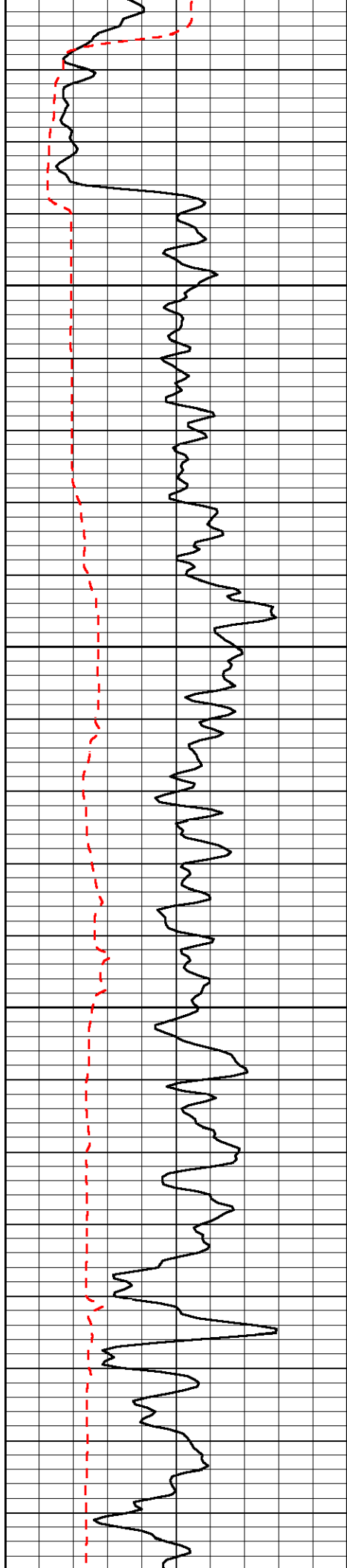
-76

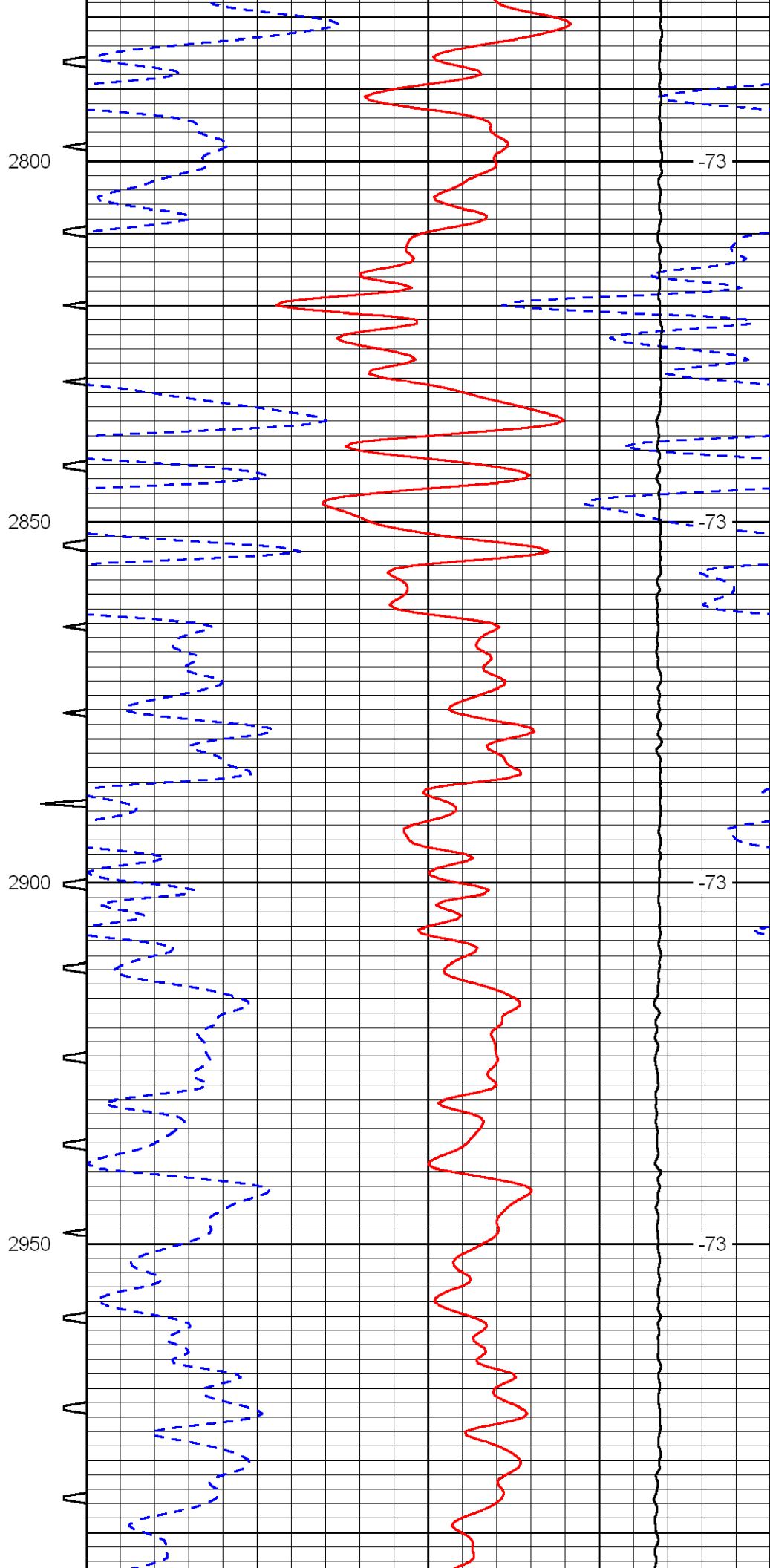
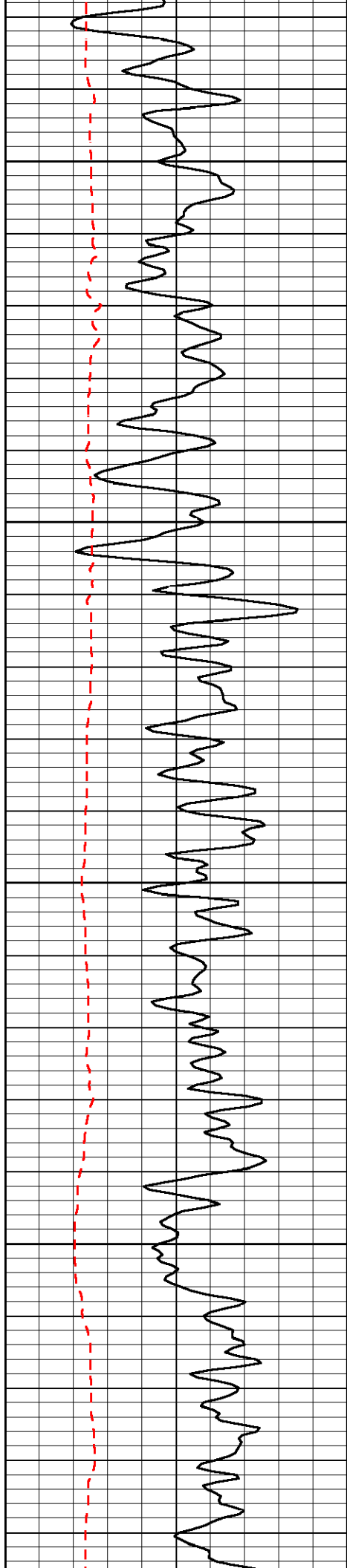
2500

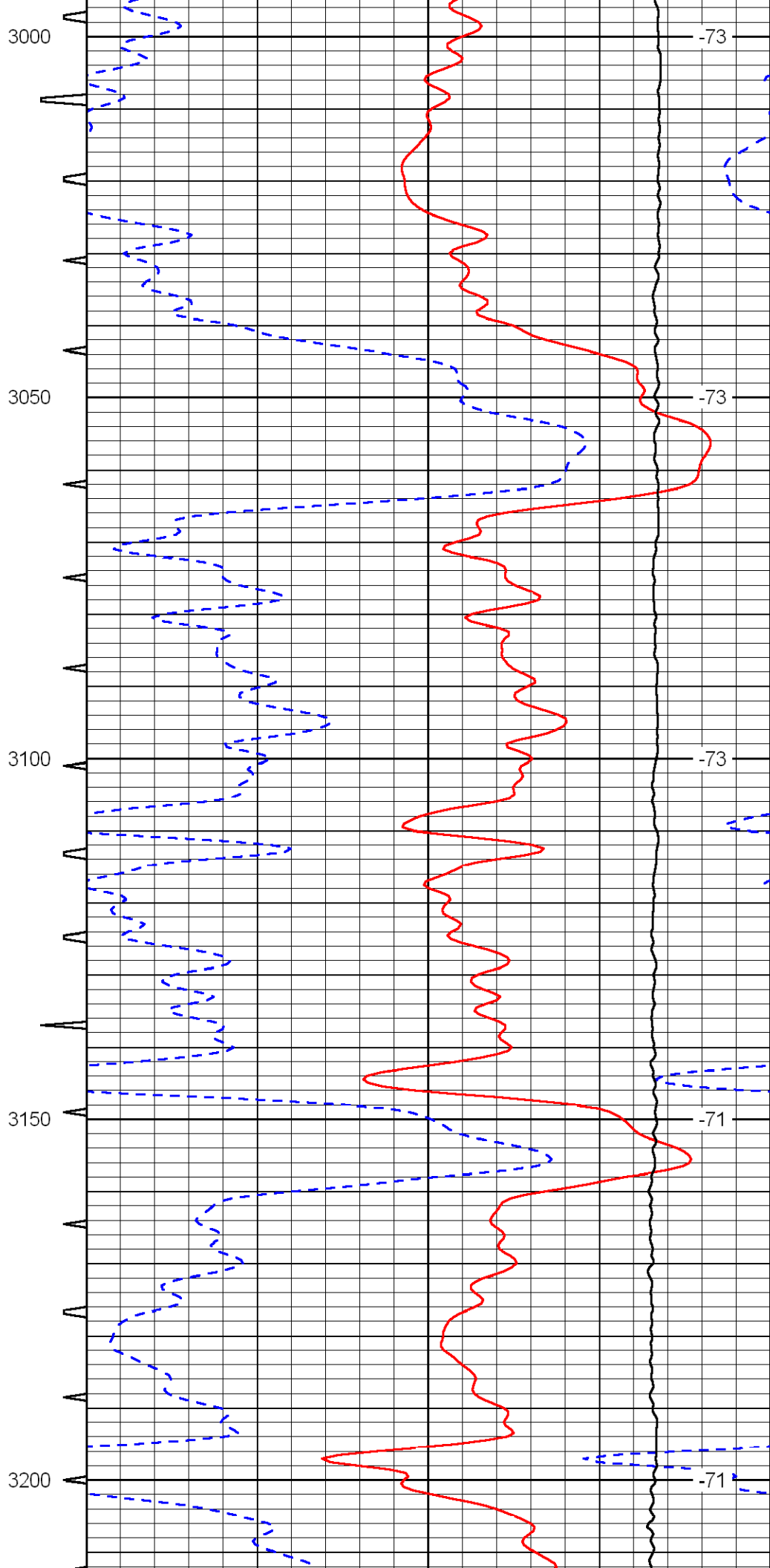
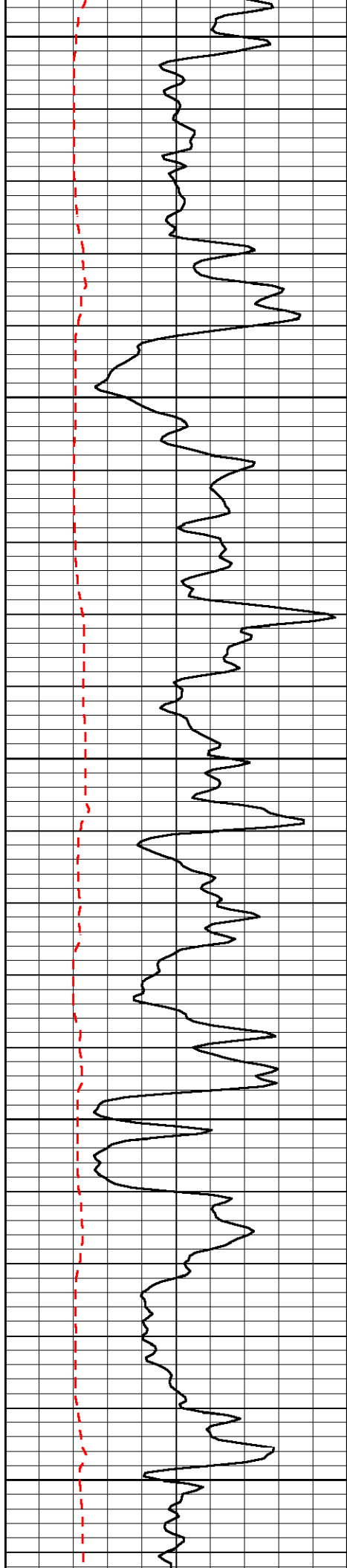
-76

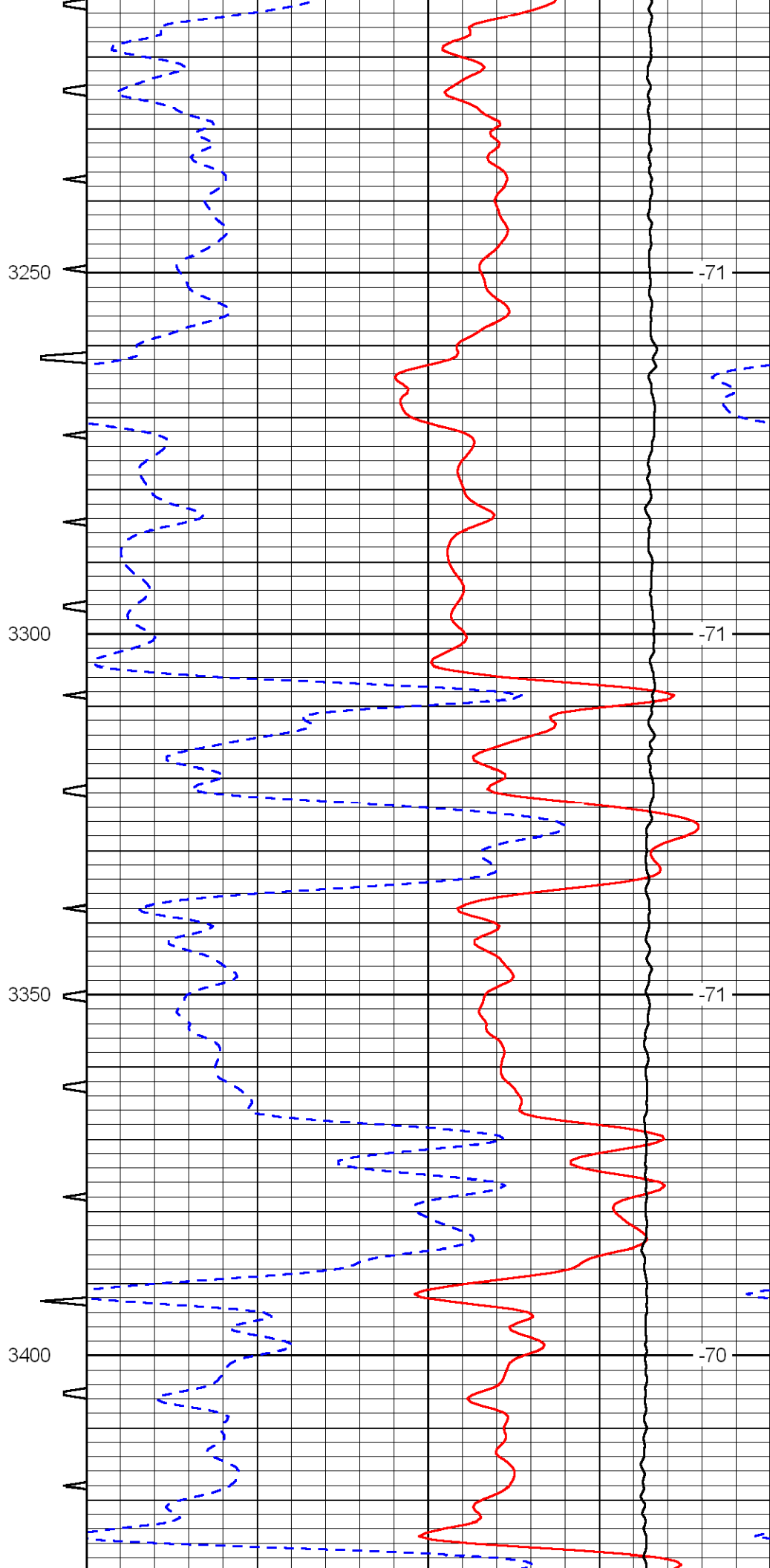
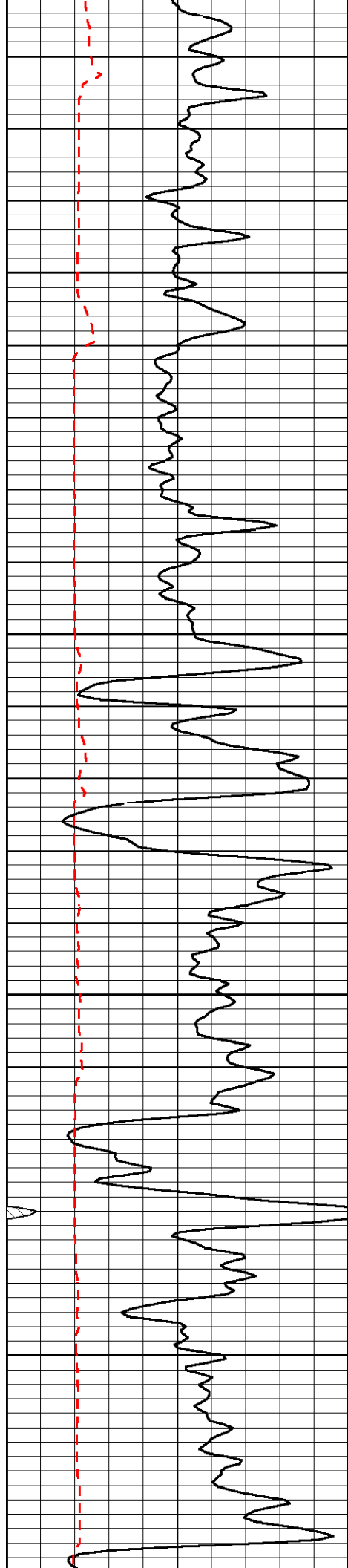
2550

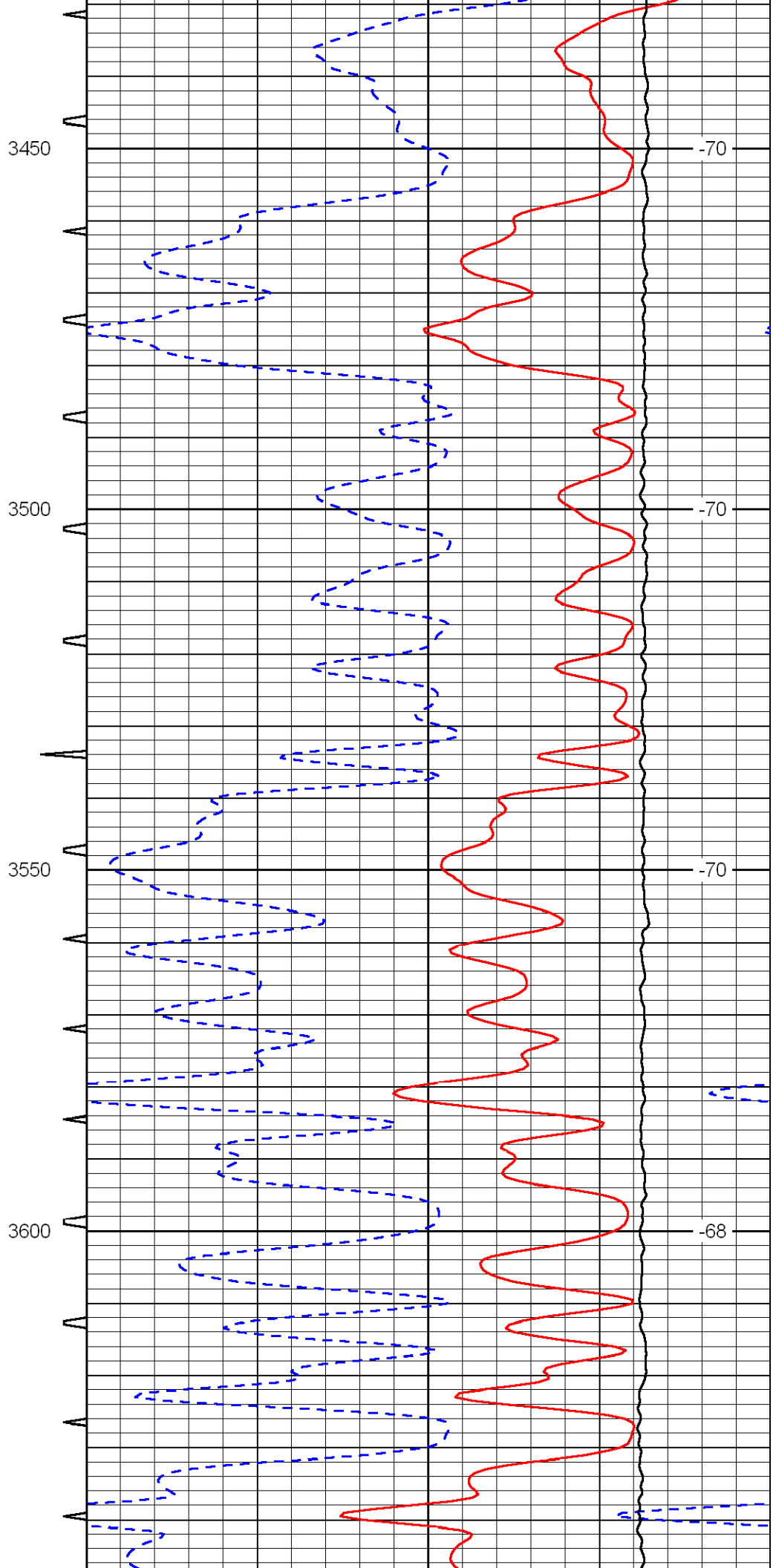
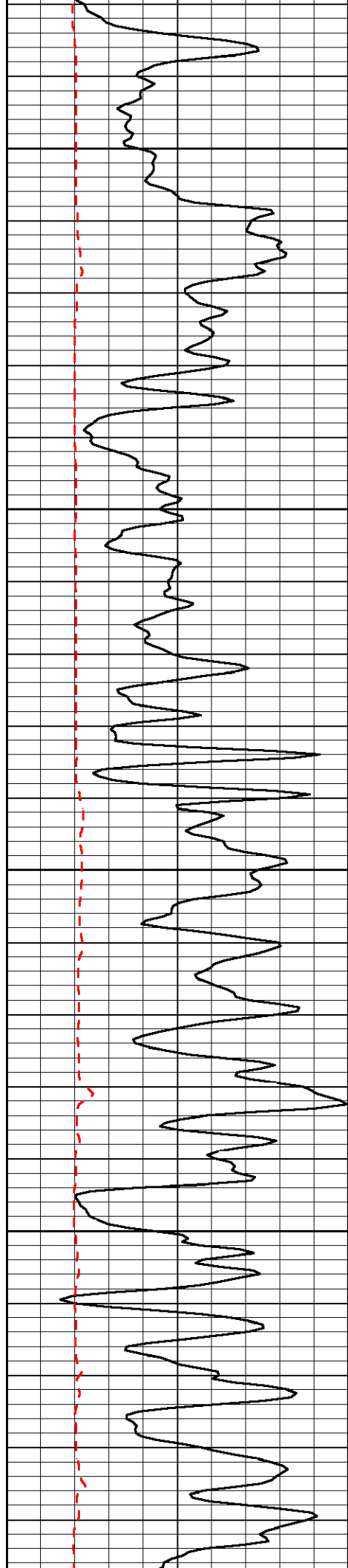
-76

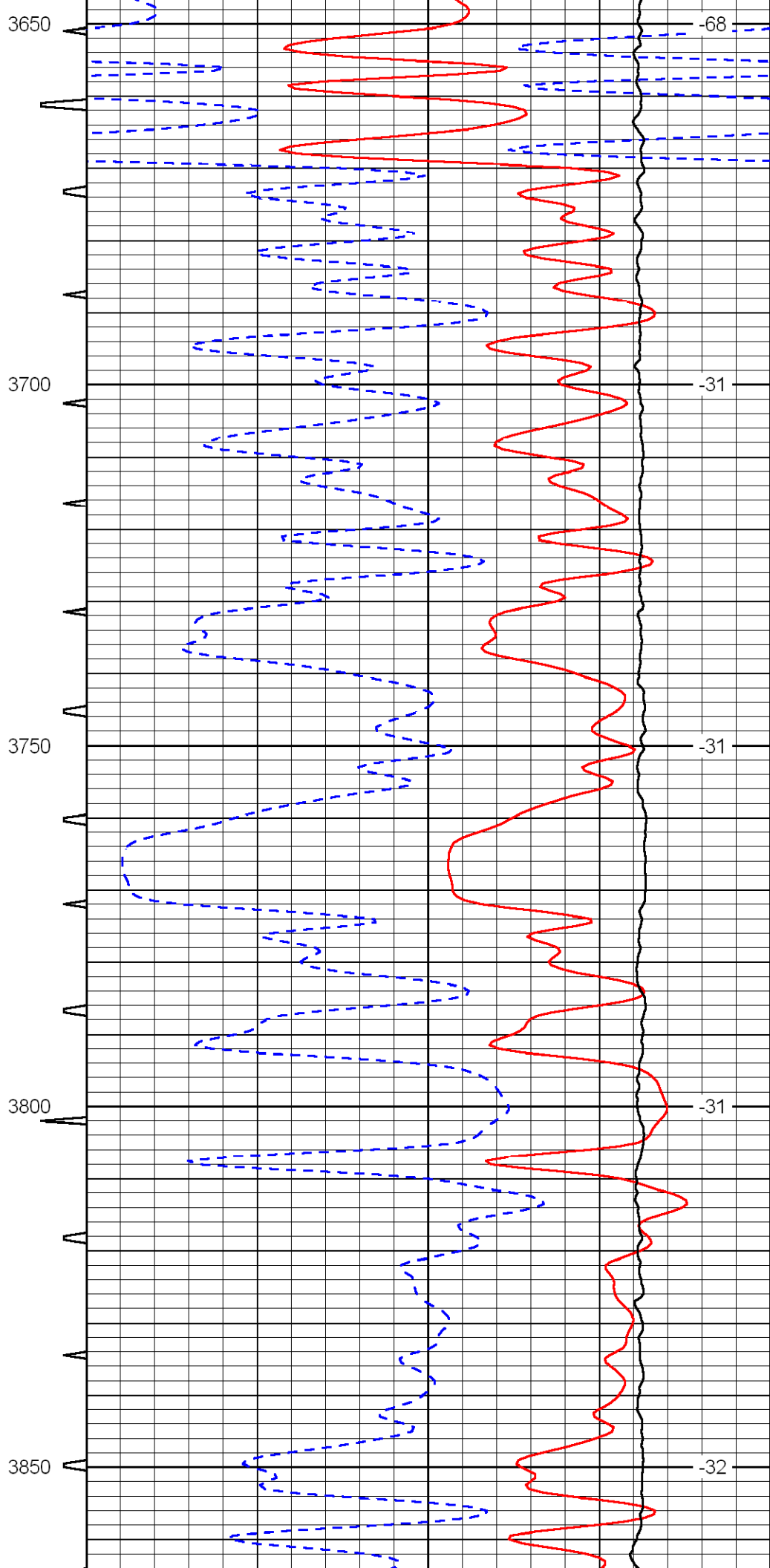
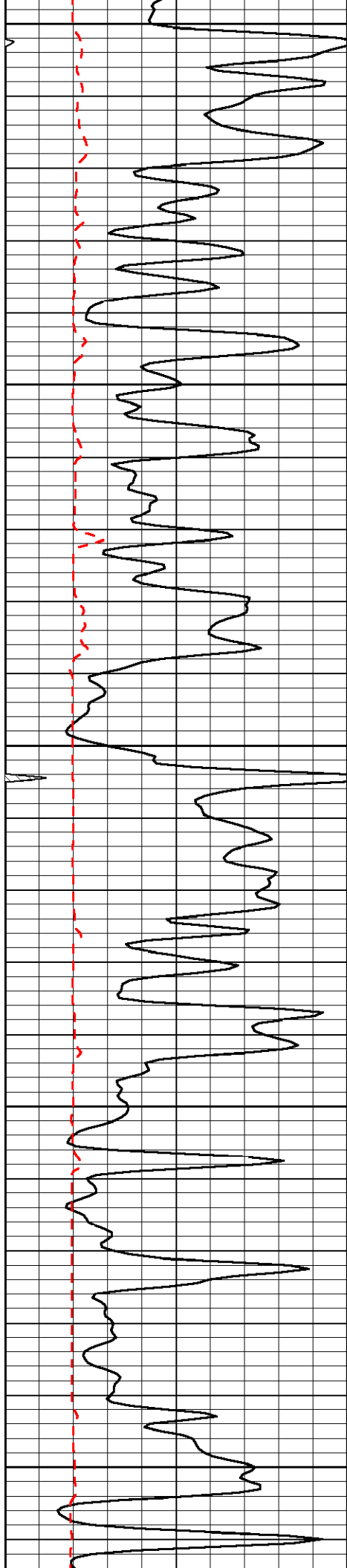


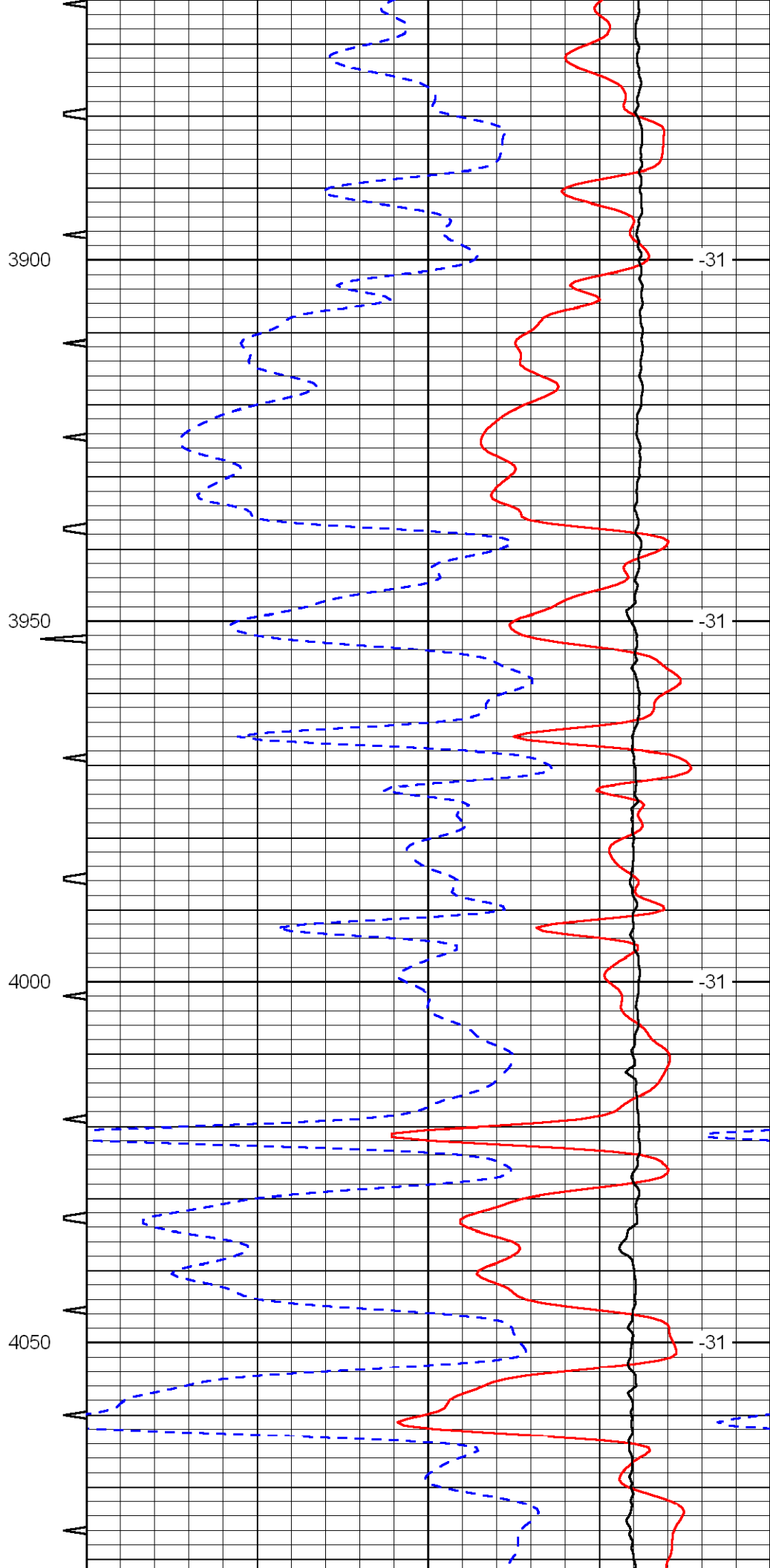
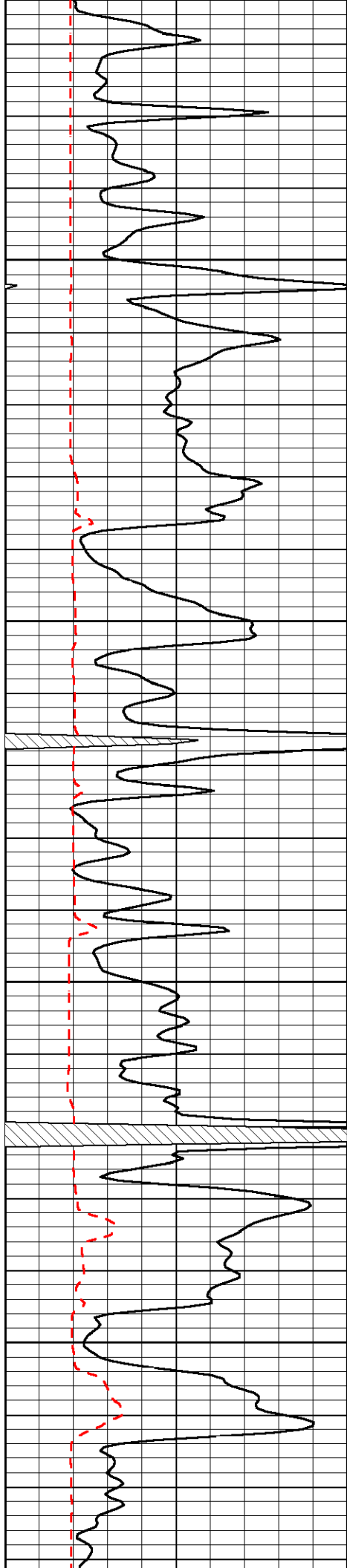


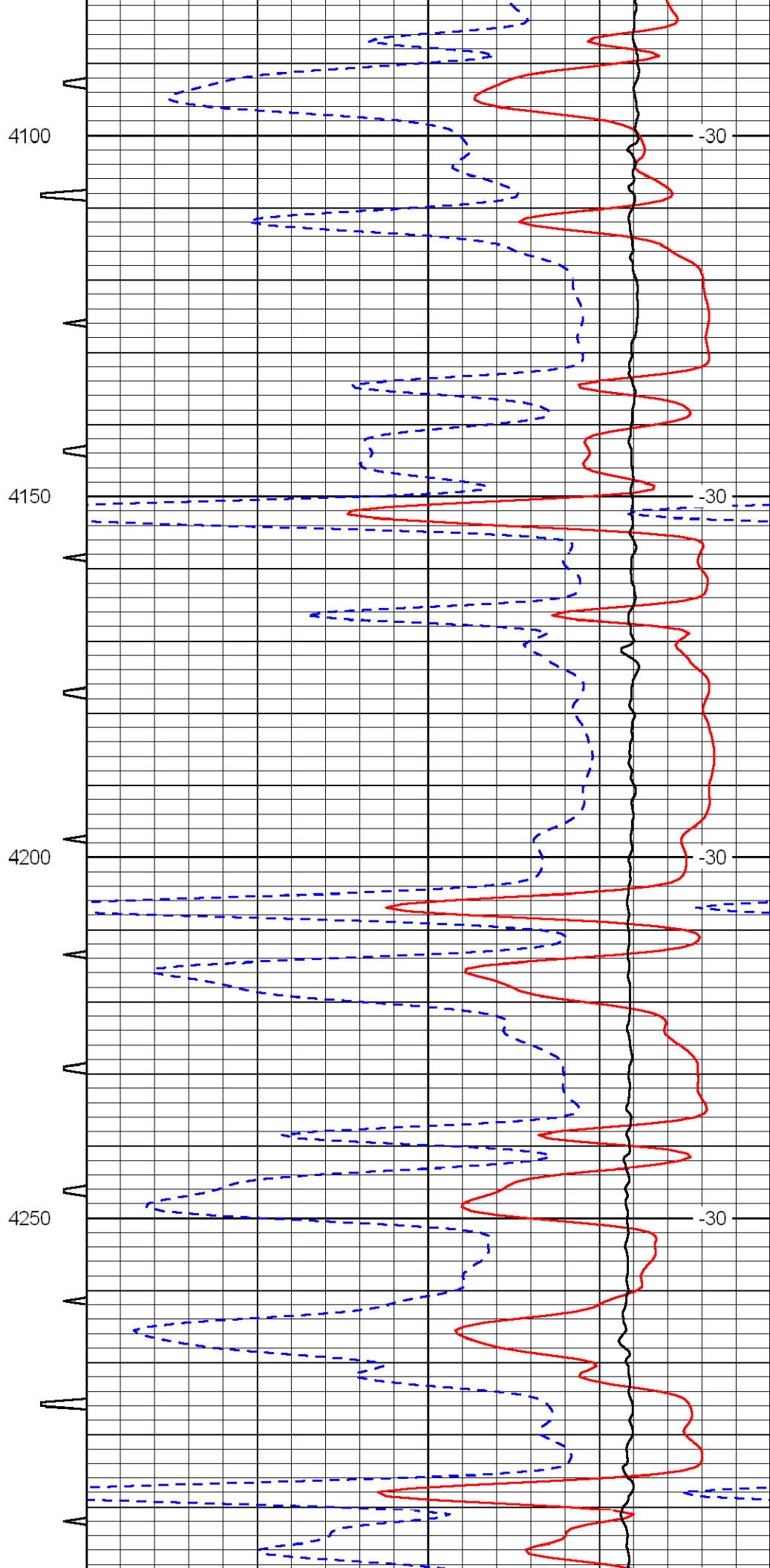
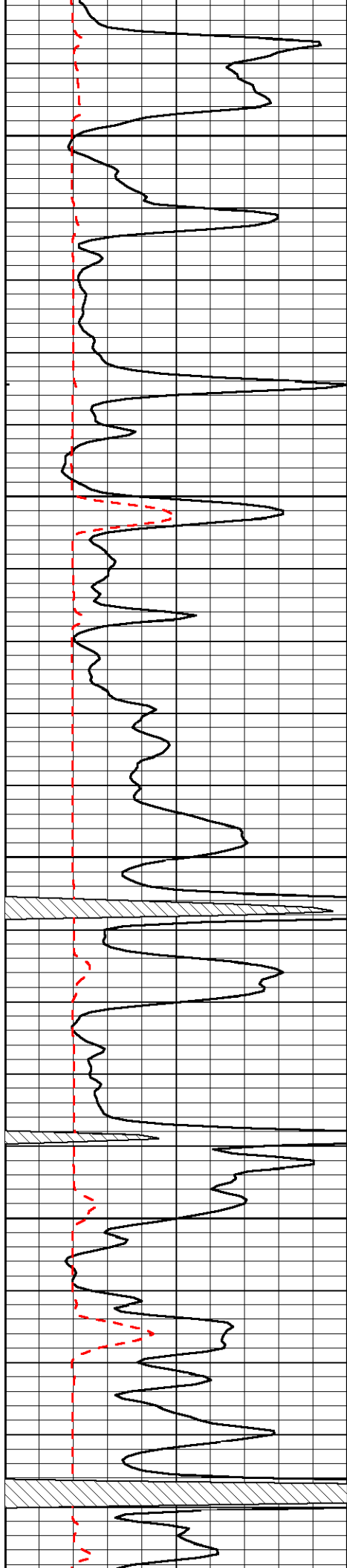


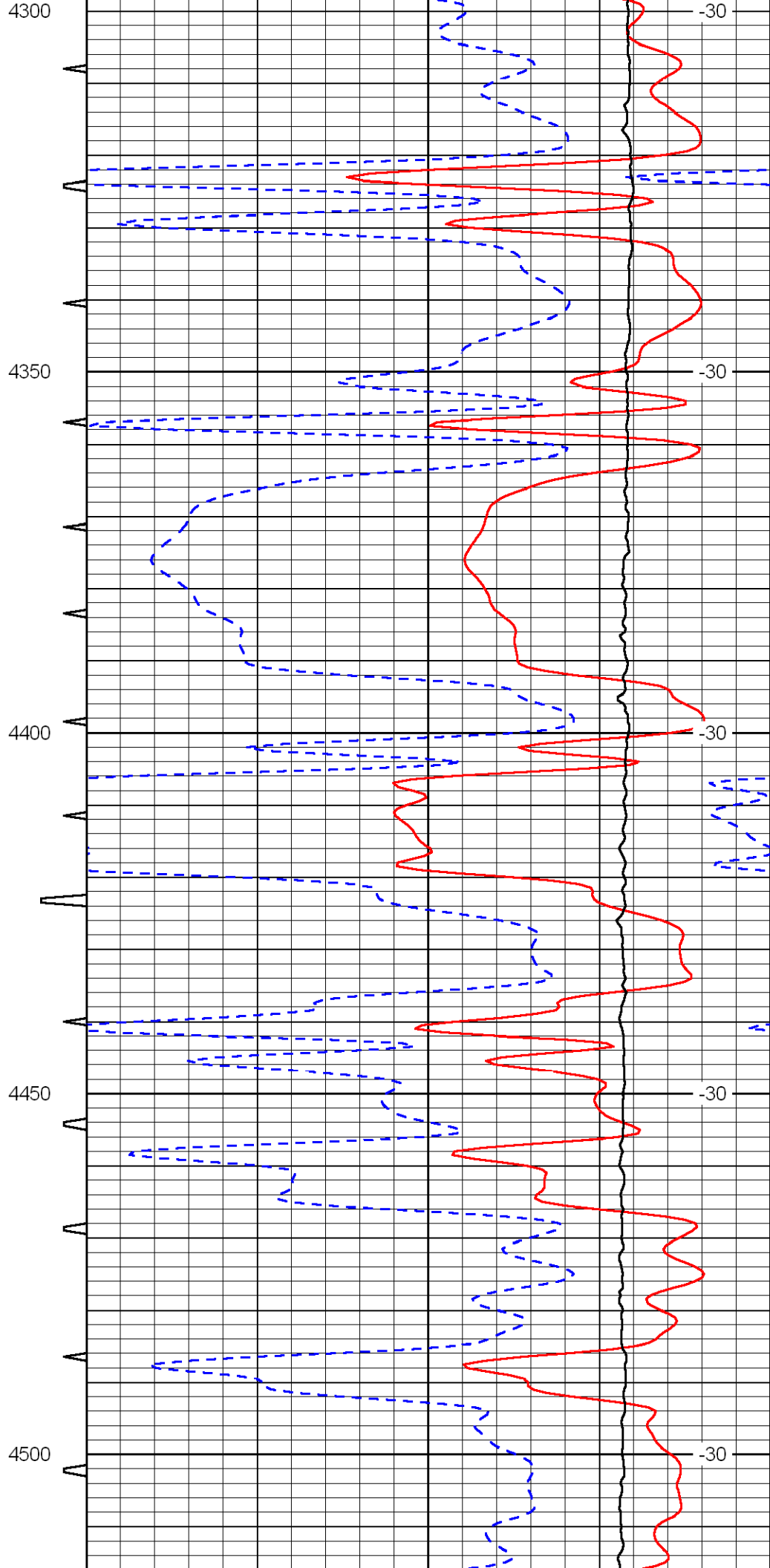
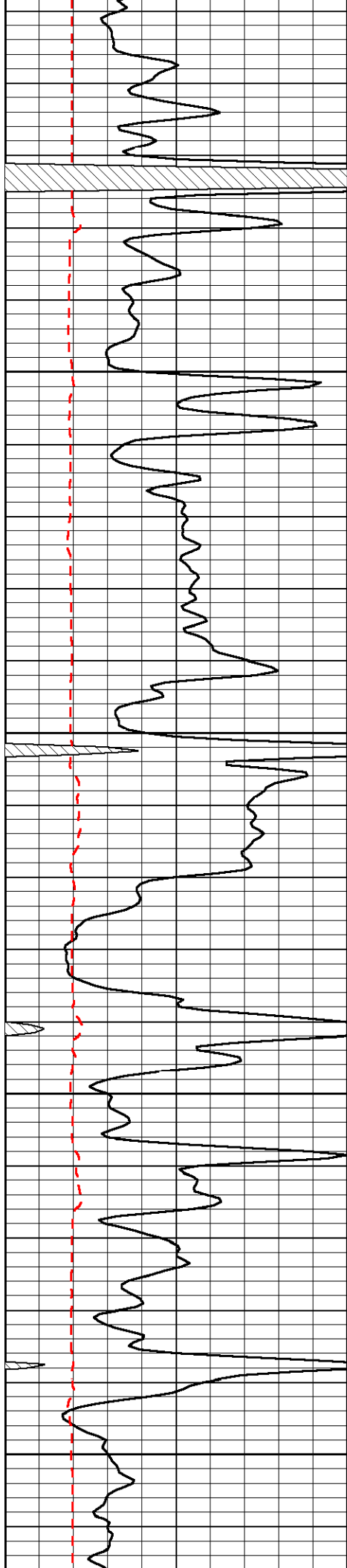


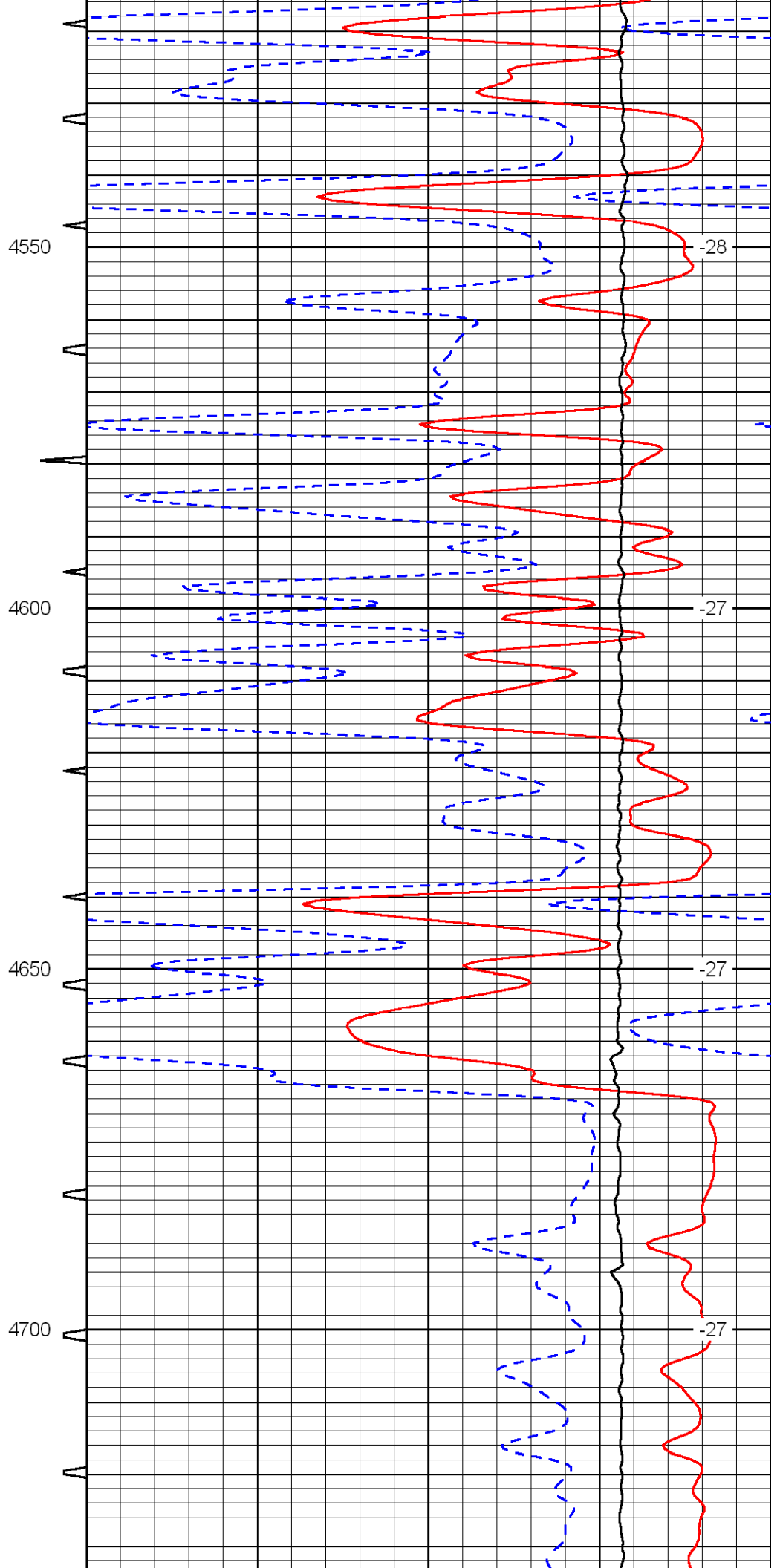
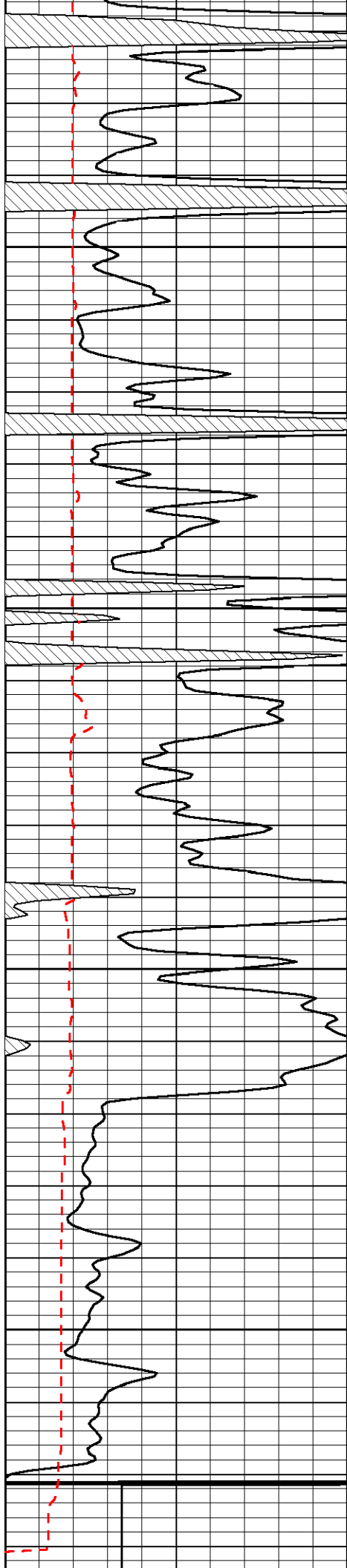


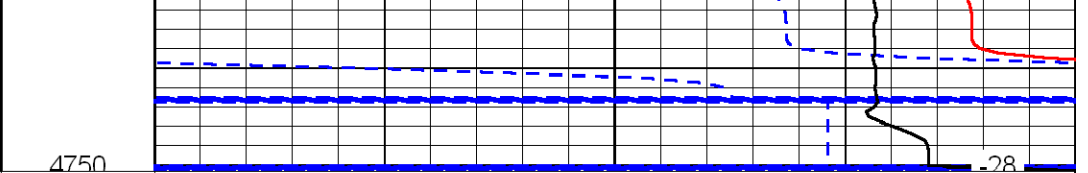
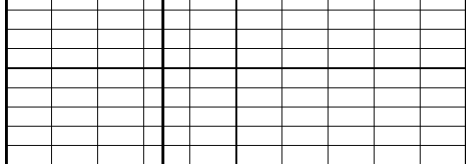












0	Gamma Ray	150	Sonic Int	140	Delta Time (usec/ft) (usec/ft)	40
150	Gamma Ray	300	5 (msec) 0	30	SPOR (pu)	-10
6	Caliper (in)	16		10000	LTEN (lb) (lb)	0
						LSPD (ft/min)