



Dual Compensated  
Porosity Log

DIGITAL LOG (785) 625-3858

API No. 15-109-20,836-00-00

Company: Murfin Drilling Company, Inc.  
Well: KWS No. 1-32  
Field: Wildcat  
County: Logan  
State: Kansas

Location: NW SE SE NW  
2120' FNL & 2020' FWL  
Sec: 32 Twp: 12S Rge: 32W

Other Services: DIL MEL/BHCS

Permanent Datum: Ground Level Elevation 3064  
Log Measured From: Kelly Bushing 10 Ft. Above Perm. Datum  
Drilling Measured From: Kelly Bushing

K.B. 3074  
D.F. G.L. 3064

Date	3/28/2009	
Run Number	One	
Type Log	CNL / CDL	
Depth Driller	4745	
Depth Logger	4745	
Bottom Logged Interval	4724	
Top Logged Interval	3700	
Type Fluid In Hole	Chemical	
Salinity, PPM CL	4,500	
Density	9.1	
Level	Full	
Max. Rec. Temp. F	123	
Operating Rig Time	4 1/2 Hours	
Equipment -- Location	15 Hays	
Recorded By	C. Desaire	
Witnessed By	Tom Funk	

Run No	Bit	Borehole Record		Casing Record	
		From	To	From	To
1	12.25	00	219	8.625	24#
2	7.875	219	4745		

<<< Fold Here >>>

All interpretations are opinions based on inferences from electrical or other measurements and we cannot and do not guarantee the accuracy or correctness of any interpretation, and we shall not, except in the case of gross or willful negligence on our part, be liable or responsible for any loss, costs, damages, or expenses incurred or sustained by anyone resulting from any interpretation made by any of our officers, agents or employees. These interpretations are also subject to our general terms and conditions set out in our current Price Schedule.

Comments

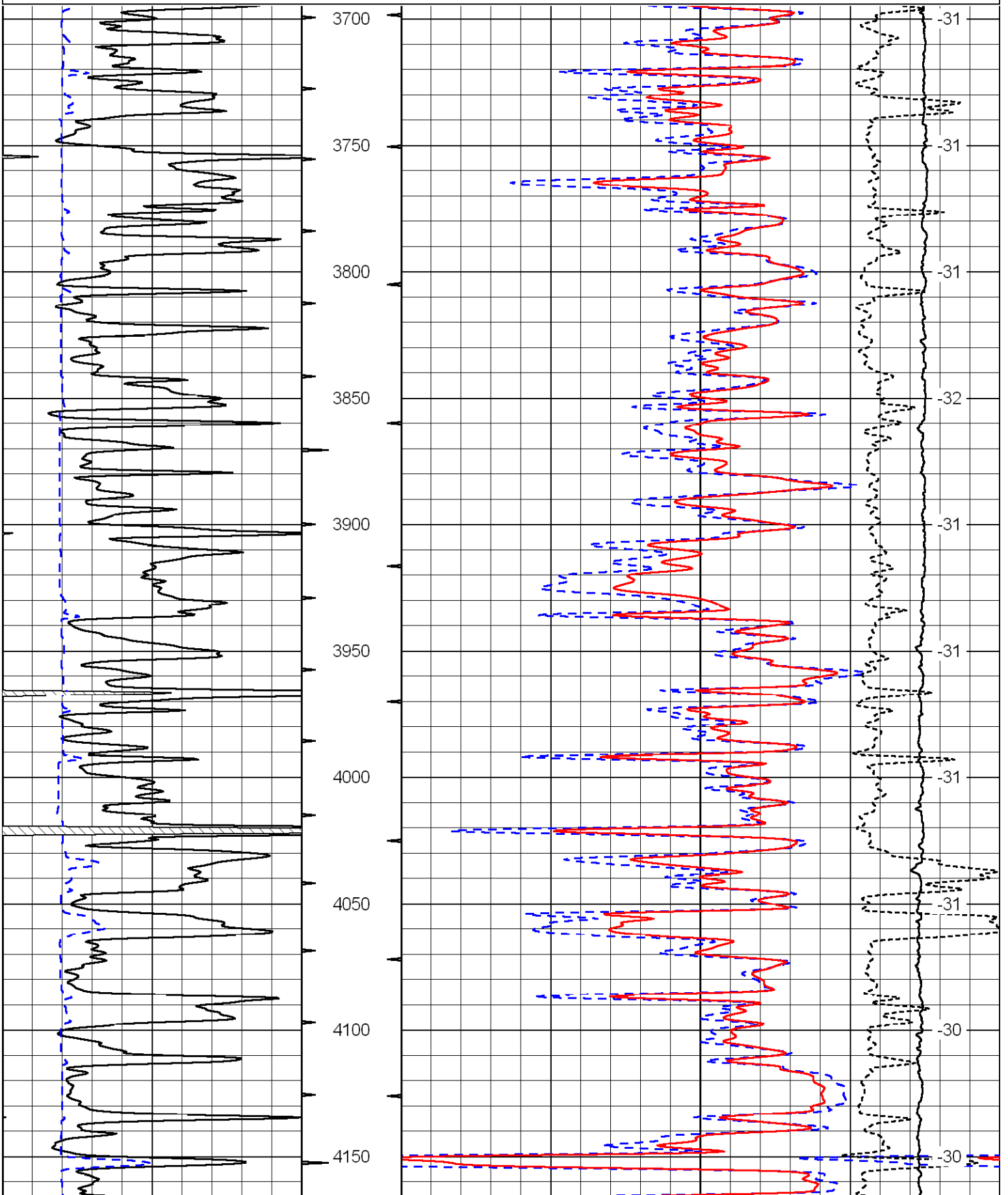
Thank you for using Log-Tech, Inc.  
(785) 625-3858

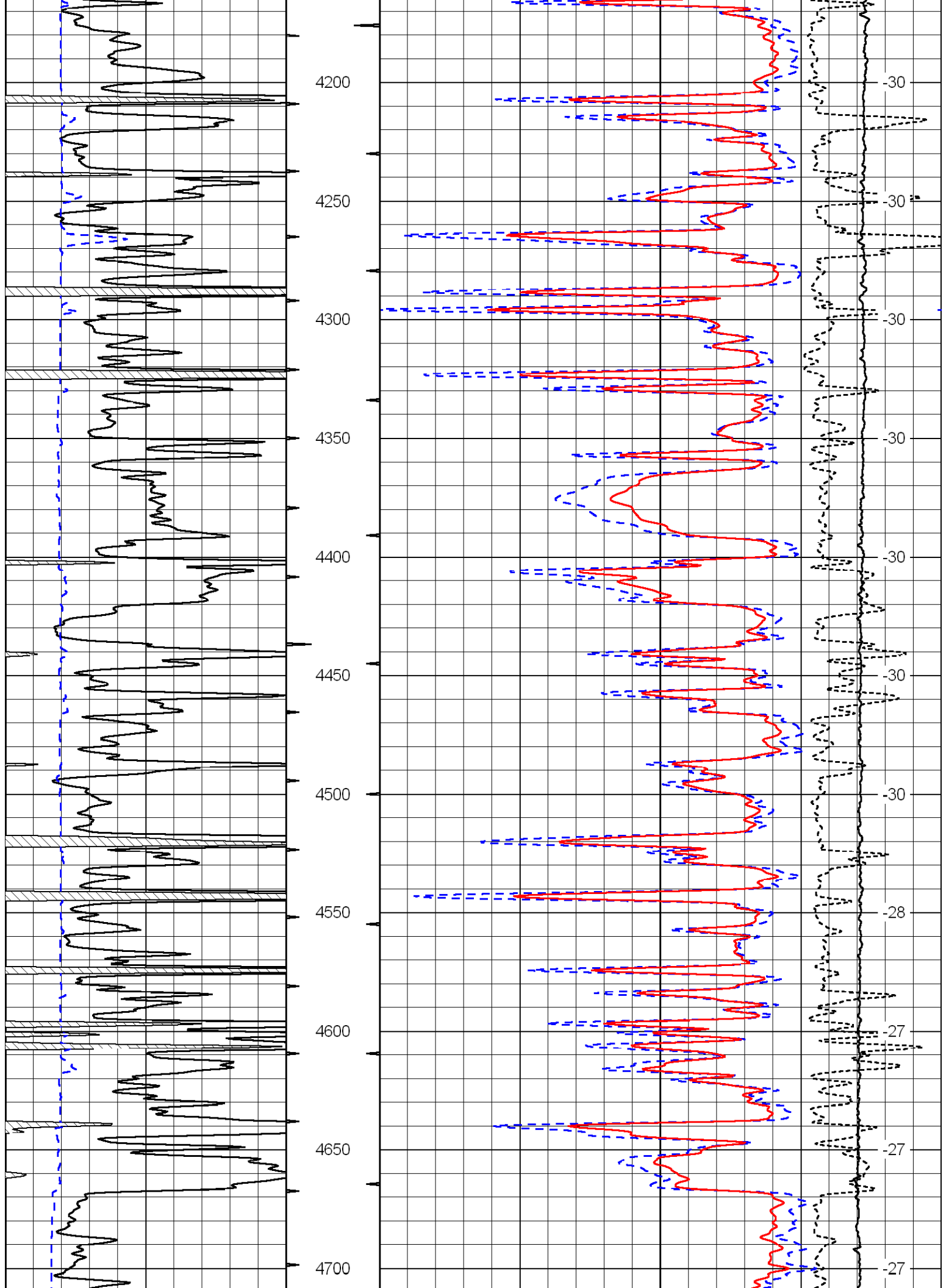
Oakley, S to Gove Rd, 3 W, 3/4 N, E Into

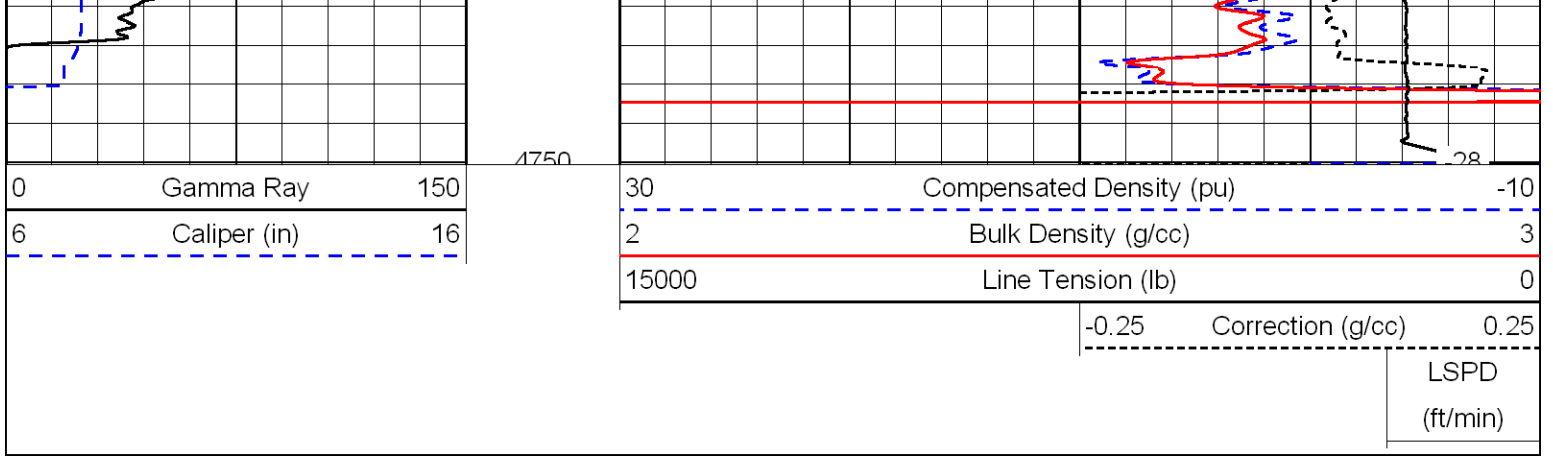
Database File: c:\warrior\data\murfin\_kws no.1-32\mrfnkwsd.db  
 Dataset Pathname: dil/mrfnstk  
 Presentation Format: cdl  
 Dataset Creation: Sun Mar 29 13:17:27 2009  
 Charted by: Depth in Feet scaled 1:600

0	Gamma Ray	150
6	Caliper (in)	16

30	Compensated Density (pu)	-10
2	Bulk Density (g/cc)	3
15000	Line Tension (lb)	0
-0.25	Correction (g/cc)	0.25
		LSPD (ft/min)







Database File: c:\warrior\data\murfin\_kws no.1-32\mrfnkwsd.db  
 Dataset Pathname: dil/mrfnstk  
 Presentation Format: cndlspec  
 Dataset Creation: Sun Mar 29 13:17:27 2009  
 Charted by: Depth in Feet scaled 1:240

