



**SUPERIOR**  
Hays,  
Kansas

**SONIC  
LOG**

Company LOTUS OPERATING COMPANY, LLC.  
Well #1 DUNBAR  
Field PYLE NORTHWEST  
County KIOWA  
State KANSAS

Company LOTUS OPERATING COMPANY, LLC.  
Well #1 DUNBAR  
Field PYLE NORTHWEST  
County KIOWA State KANSAS

Location: API # : 15-097-21693-0000  
2310' FSL & 2310' FEL  
NW - NW - SE  
SEC 1 TWP 29S RGE 16W  
Permanent Datum GROUND LEVEL Elevation 2055  
Log Measured From KELLY BUSHING 9' A.G.L.  
Drilling Measured From KELLY BUSHING  
Other Services  
CDL/CNL/PE  
DIL/MEL  
Elevation  
K.B. 2064  
D.F. 2062  
G.L. 2055

Date	6/1/11		
Run Number	TWO		
Depth Driller	5020		
Depth Logger	5020		
Bottom Logged Interval	5007		
Top Log Interval	200		
Casing Driller	10 3/4"@290'		
Casing Logger	294		
Bit Size	7 7/8"		
Type Fluid in Hole	CHEMICAL MUD	CHLORIDES 5,000 PPM	
Density / Viscosity	9.5/49		
pH / Fluid Loss	9.5/11.2		
Source of Sample	FLOWLINE		
Rm @ Meas. Temp	.500@95F		
Rmt @ Meas. Temp	.375@95F		
Rmc @ Meas. Temp	.600@95F		
Source of Rmf / Rmc	MEASUREMENT		
Rm @ BHT	.360@125F		
Time Circulation Stopped	5 HOURS		
Time Logger on Bottom	1:00 P.M.		
Maximum Recorded Temperature	125F		
Equipment Number	4010		
Location	HAYS, KANSAS		
Recorded By	JEFF LUEBBERS		
Witnessed By	TIM HELLMAN		

<<< Fold Here >>>

All interpretations are opinions based on inferences from electrical or other measurements and we cannot and do not guarantee the accuracy or correctness of any interpretation, and we shall not, except in the case of gross or willful negligence on our part, be liable or responsible for any loss, costs, damages, or expenses incurred or sustained by anyone resulting from any interpretation made by any of our officers, agents or employees. These interpretations are also subject to our general terms and conditions set out in our current Price Schedule.

Comments

THANK YOU FOR USING SUPERIOR WELL SERVICE HAYS, KANSAS (785) 628-6395  
DIRECTIONS  
HAVILAND, KS. E. ON HWY 54 TO "140TH RD." (CROFT BLKTOP) 4 1/2 S. TO "60TH RD.", 1 1/2W., S. INTO

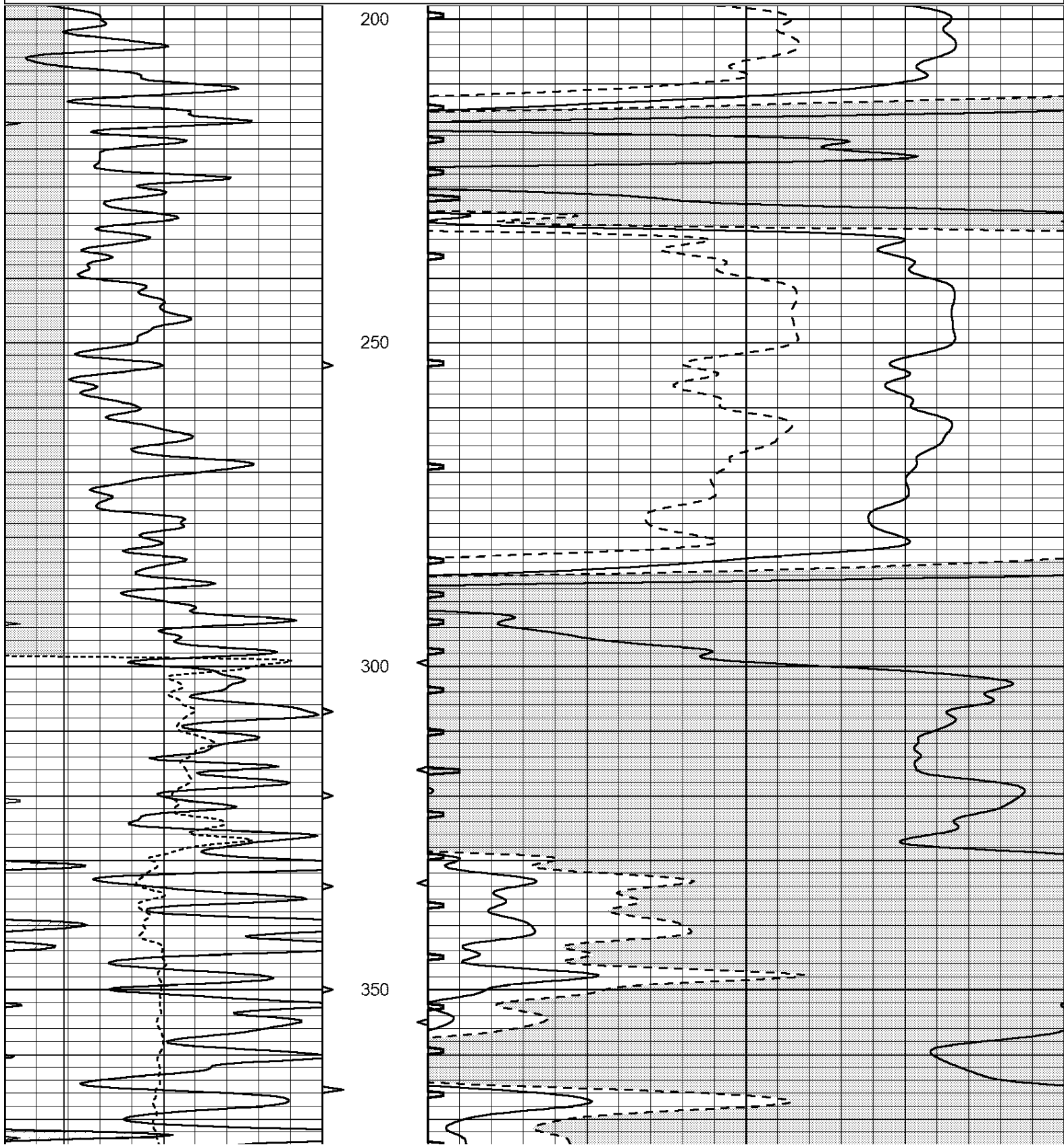


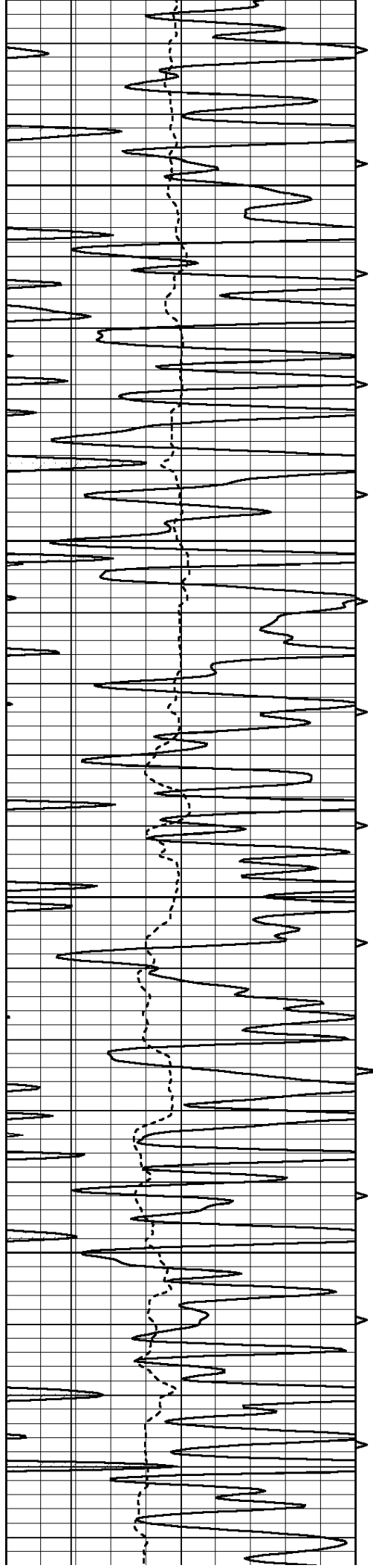
**SUPERIOR**  
Hays,  
Kansas

**MAIN SECTION**

Database File: 006964pe.db  
 Dataset Pathname: pass6.9  
 Presentation Format: slt  
 Dataset Creation: Wed Jun 01 17:12:27 2011  
 Charted by: Depth in Feet scaled 1:240

0	GAMMA RAY (GAPI)	150	ABHV	140	DELTA TIME (usec/ft)	40
6	CALIPER (in)	16	10 (ft3) 0	30	SONIC POROSITY (pu)	-10
0	MINMK	20	TBHV	0	ITT (msec)	20
			0 (ft3) 10			



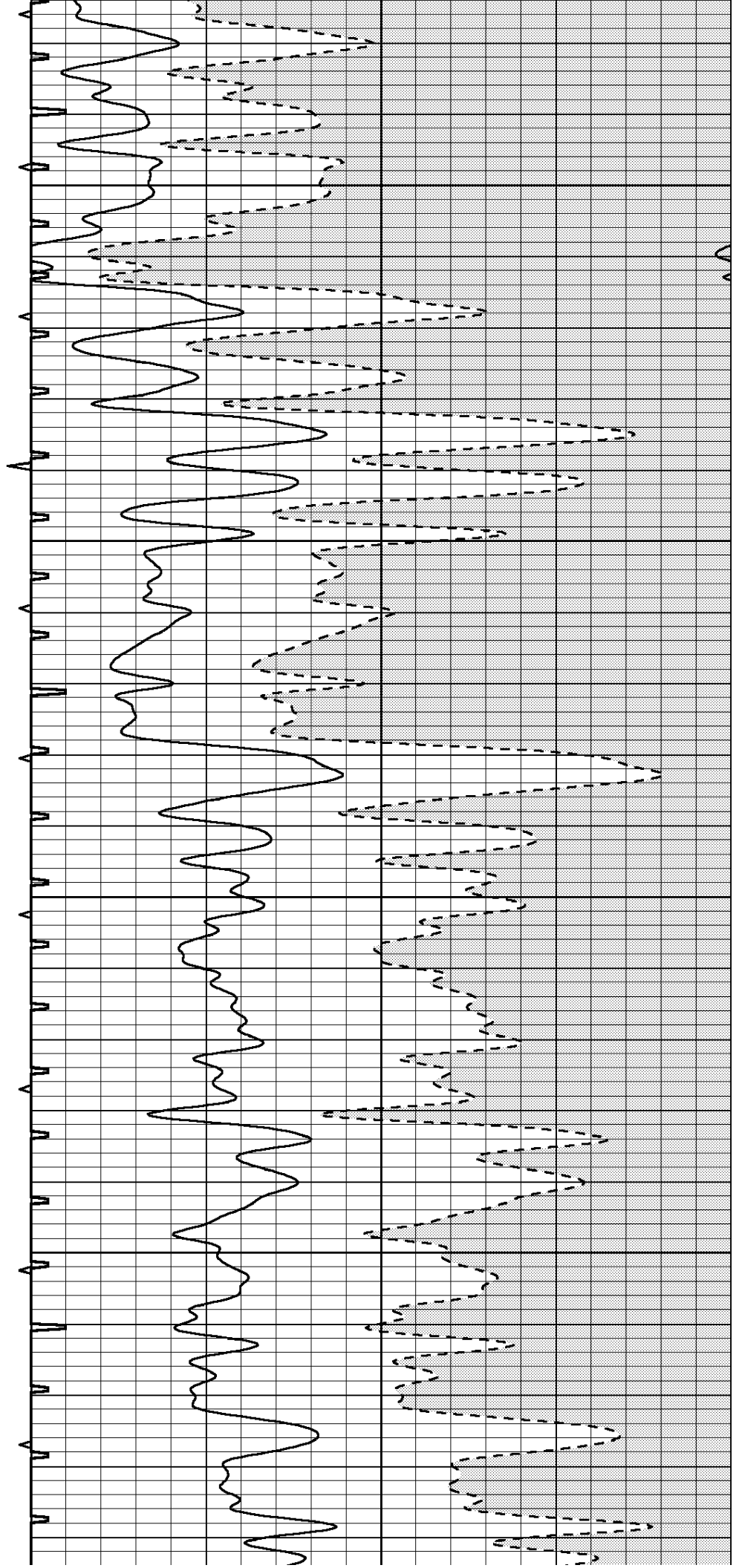


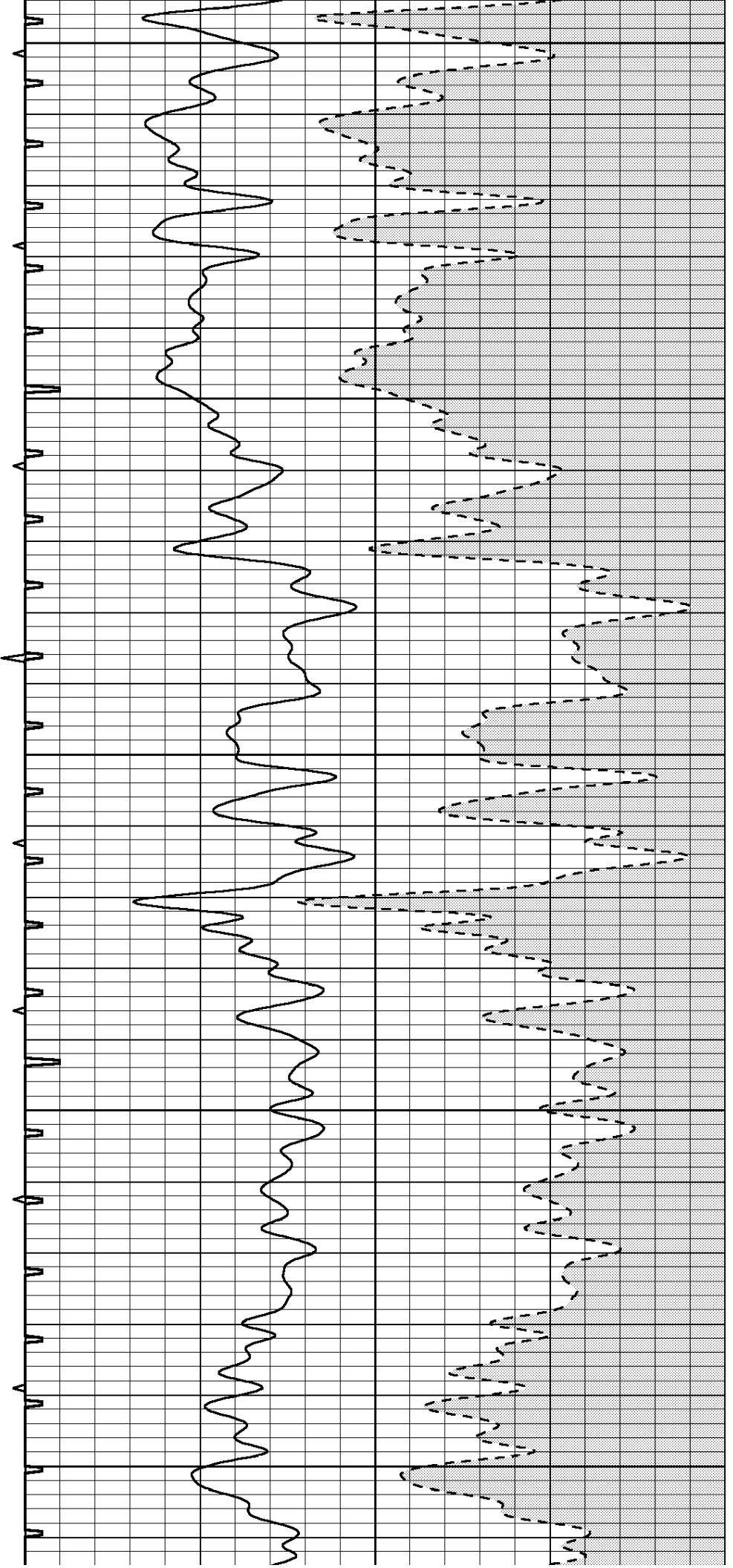
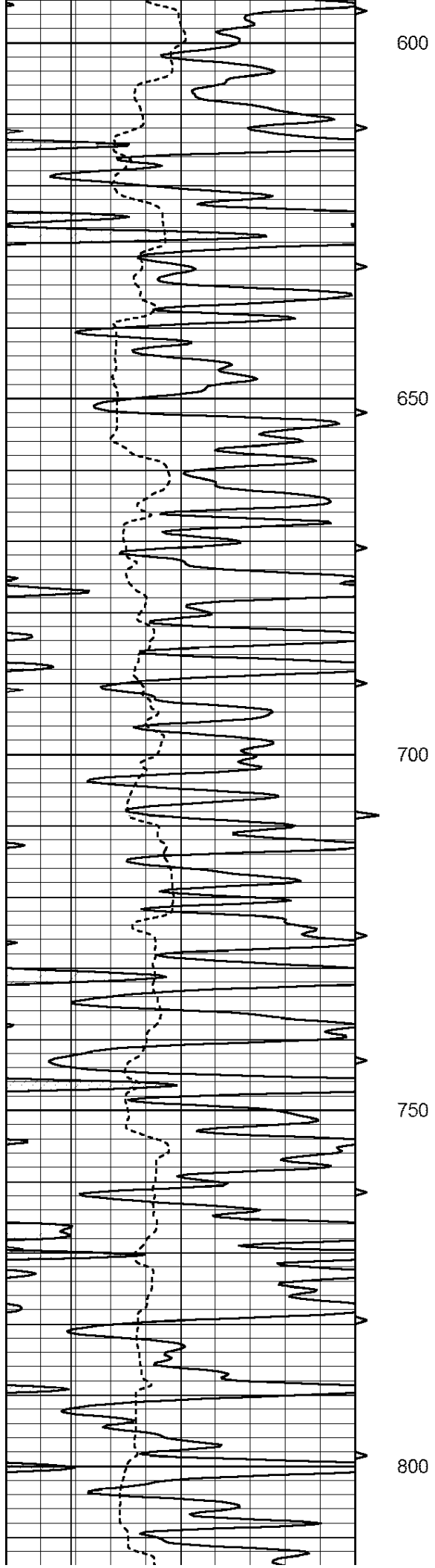
400

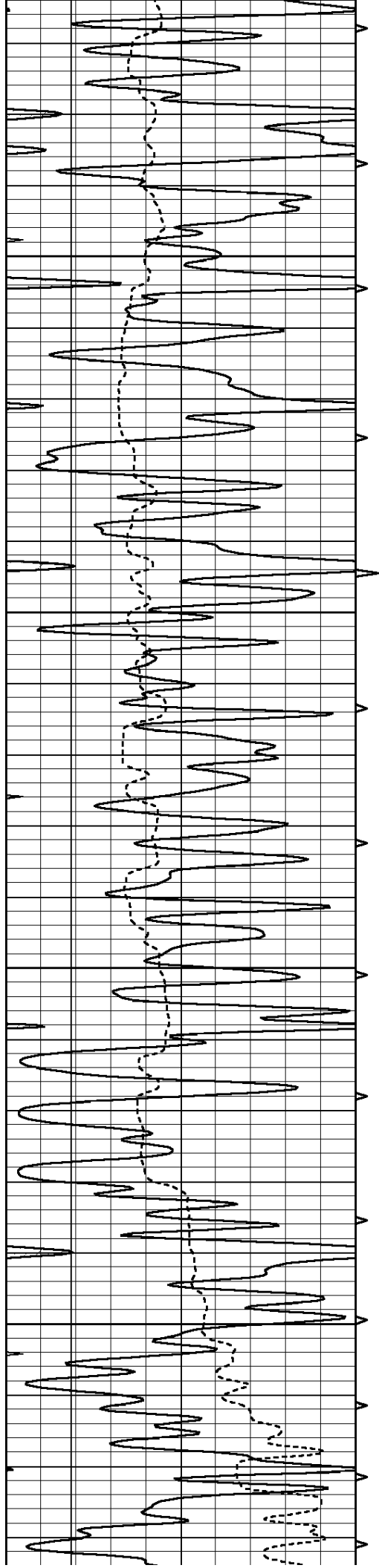
450

500

550





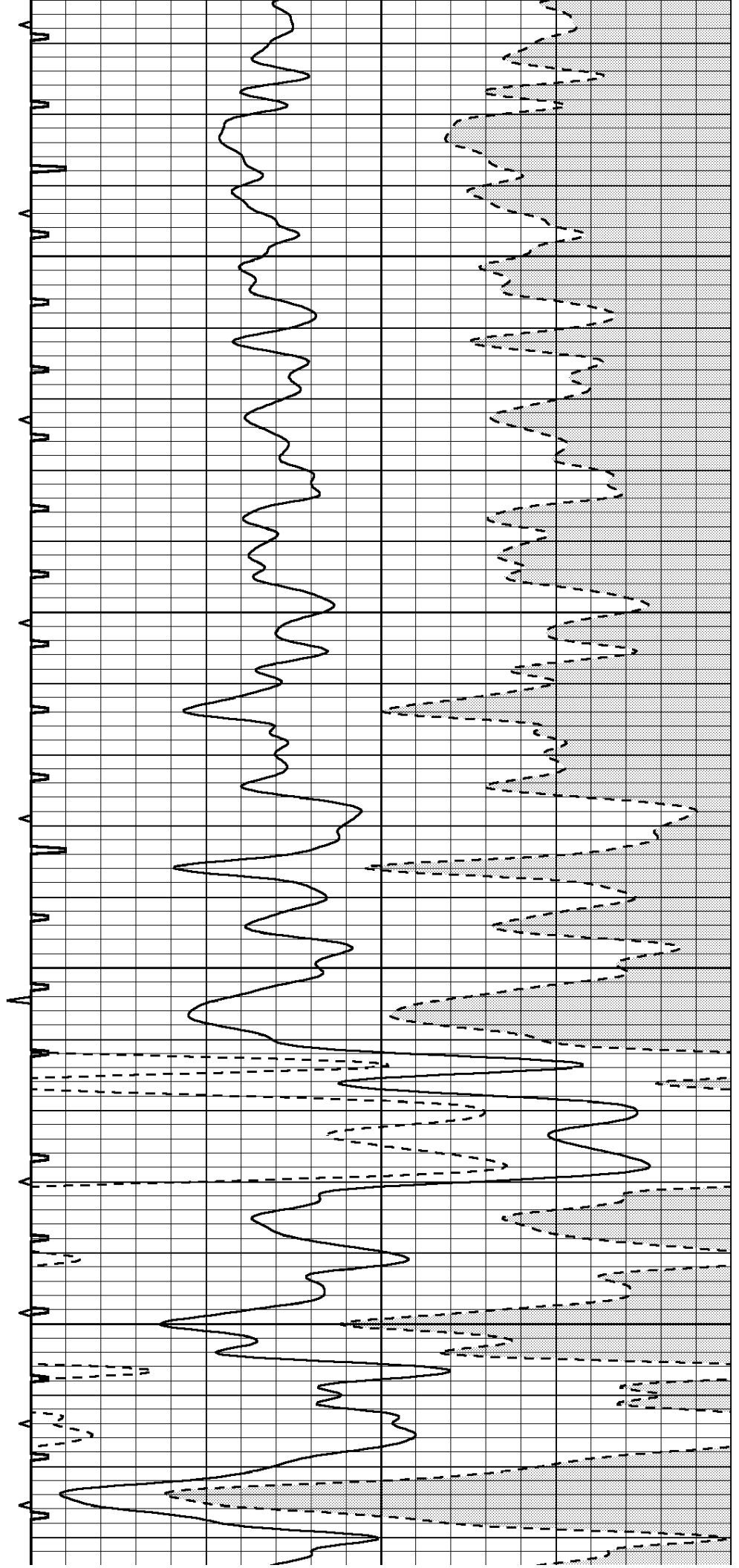


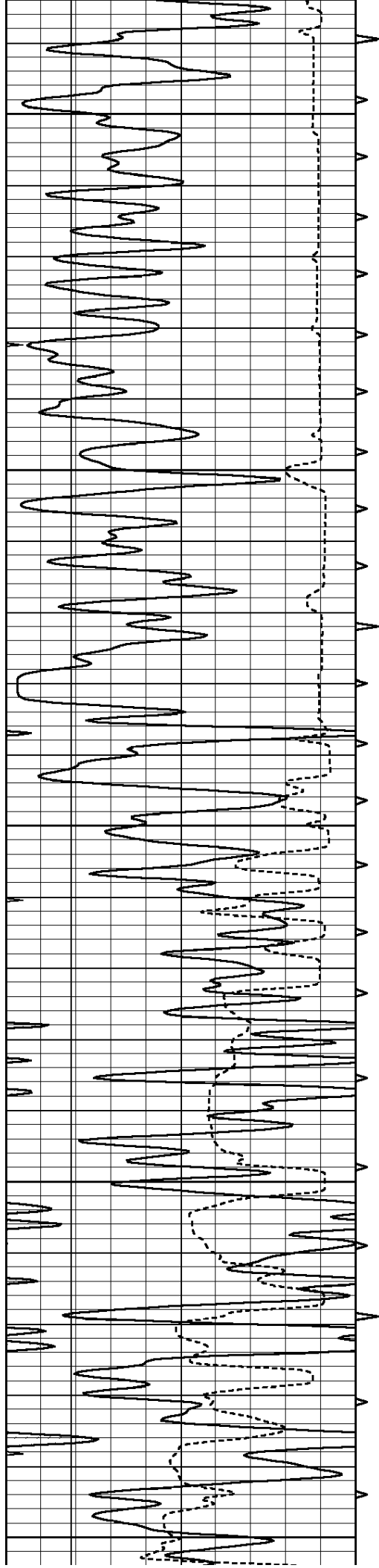
850

900

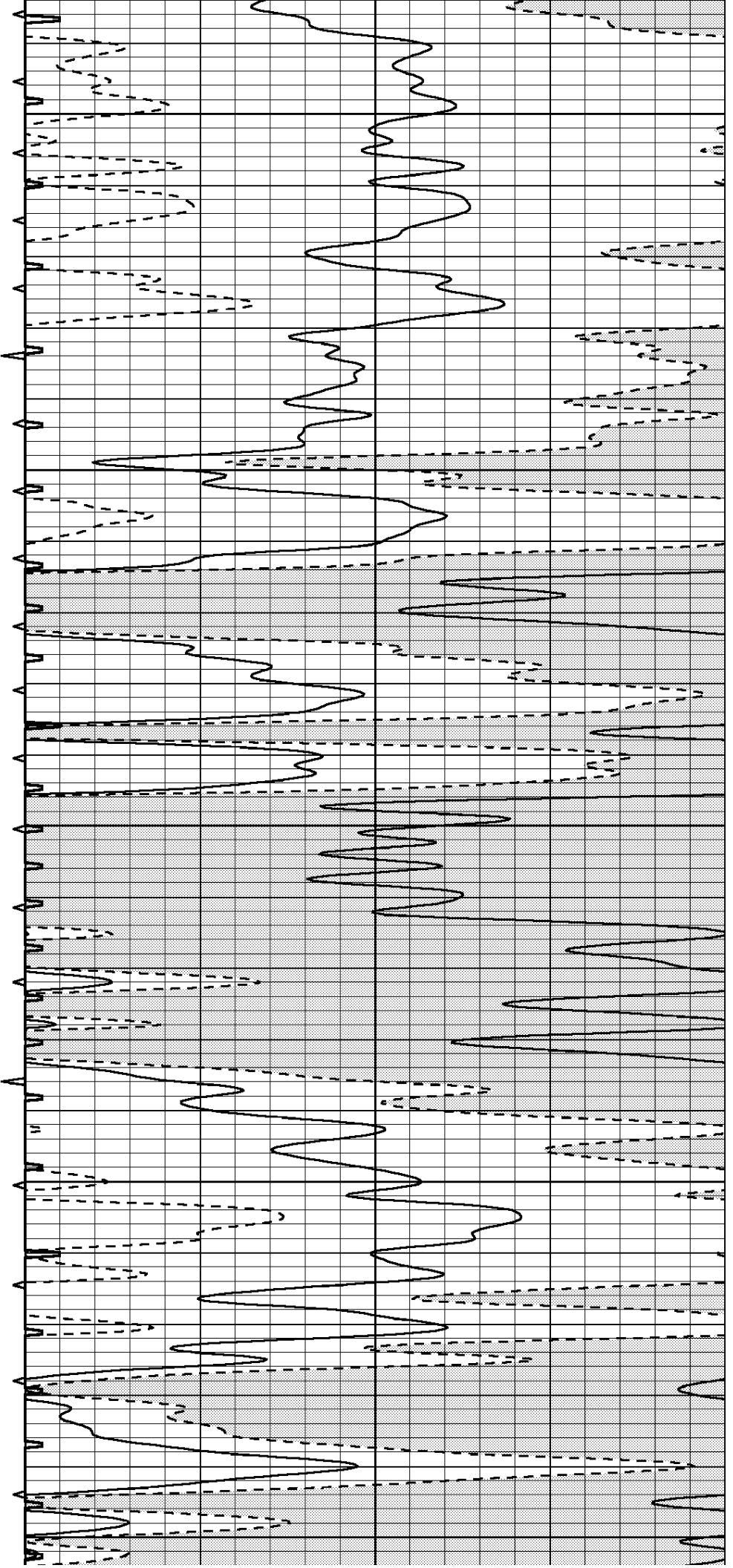
950

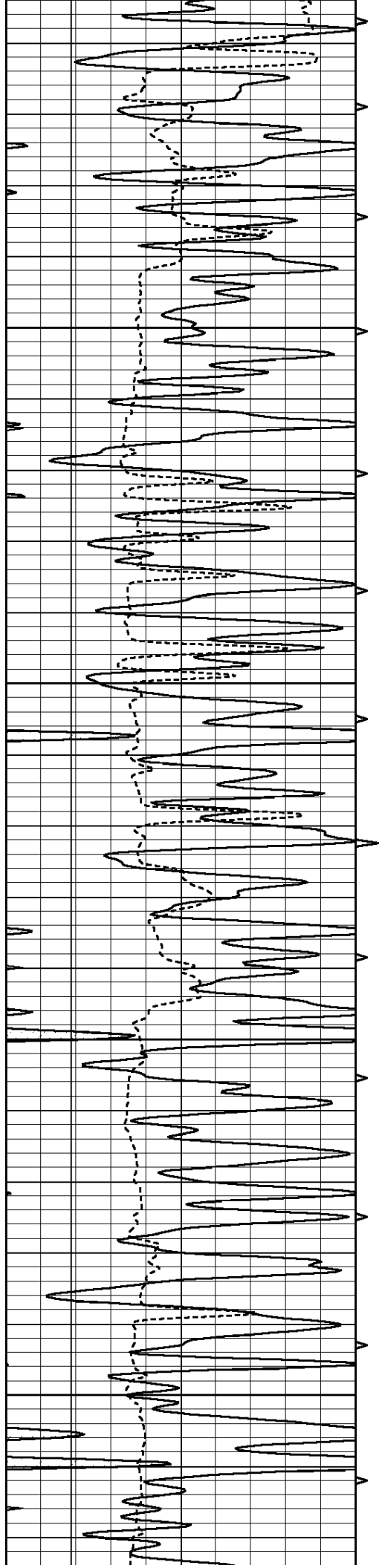
1000





1050  
1100  
1150  
1200  
1250



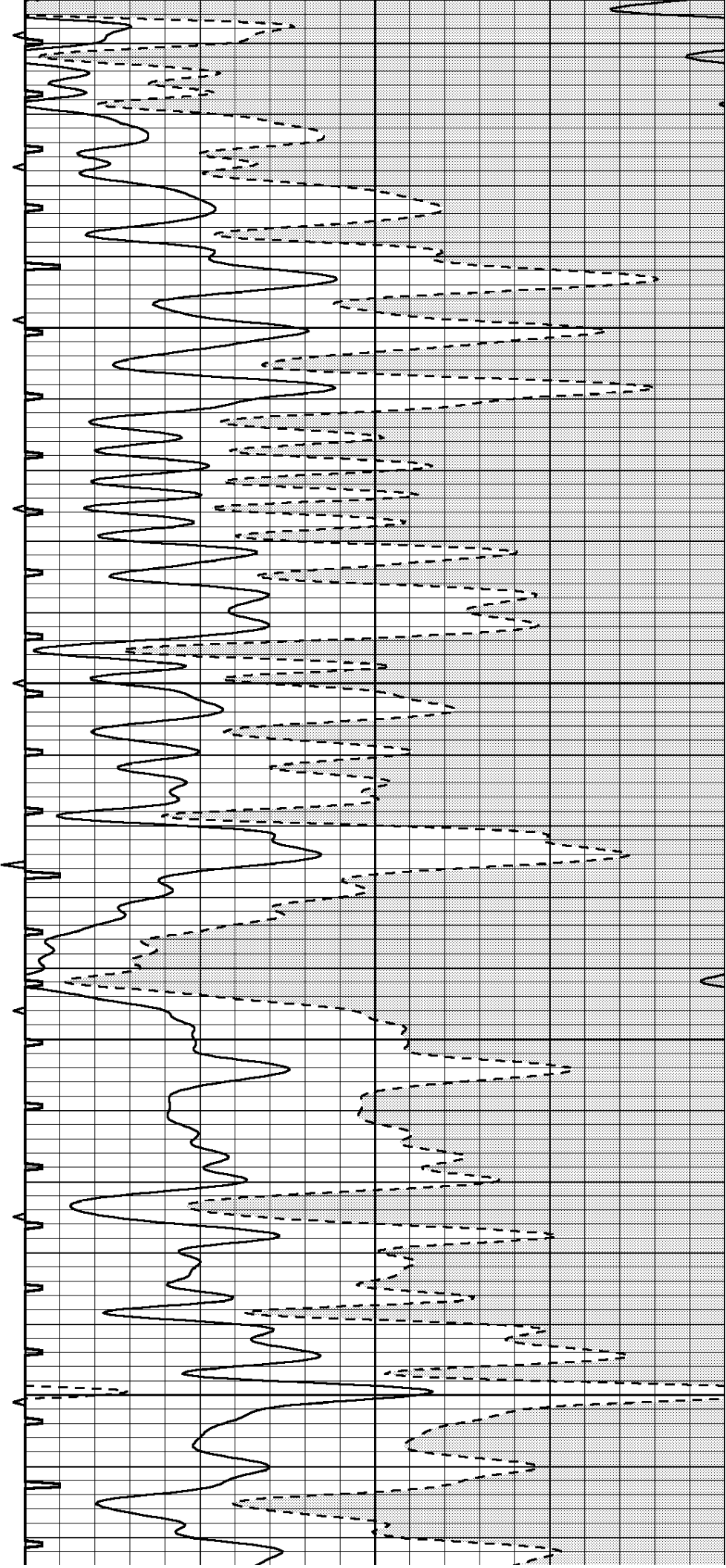


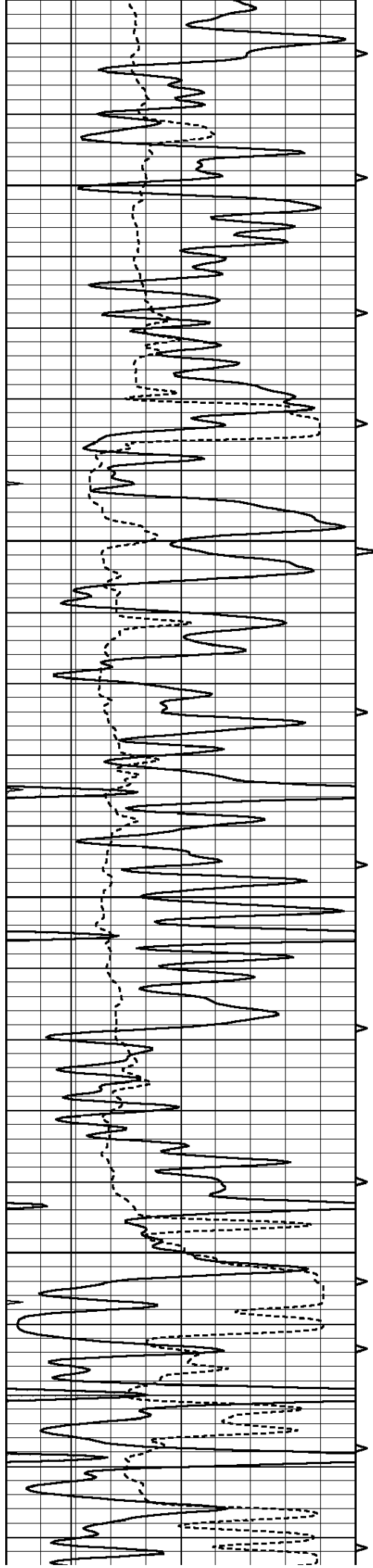
1300

1350

1400

1450



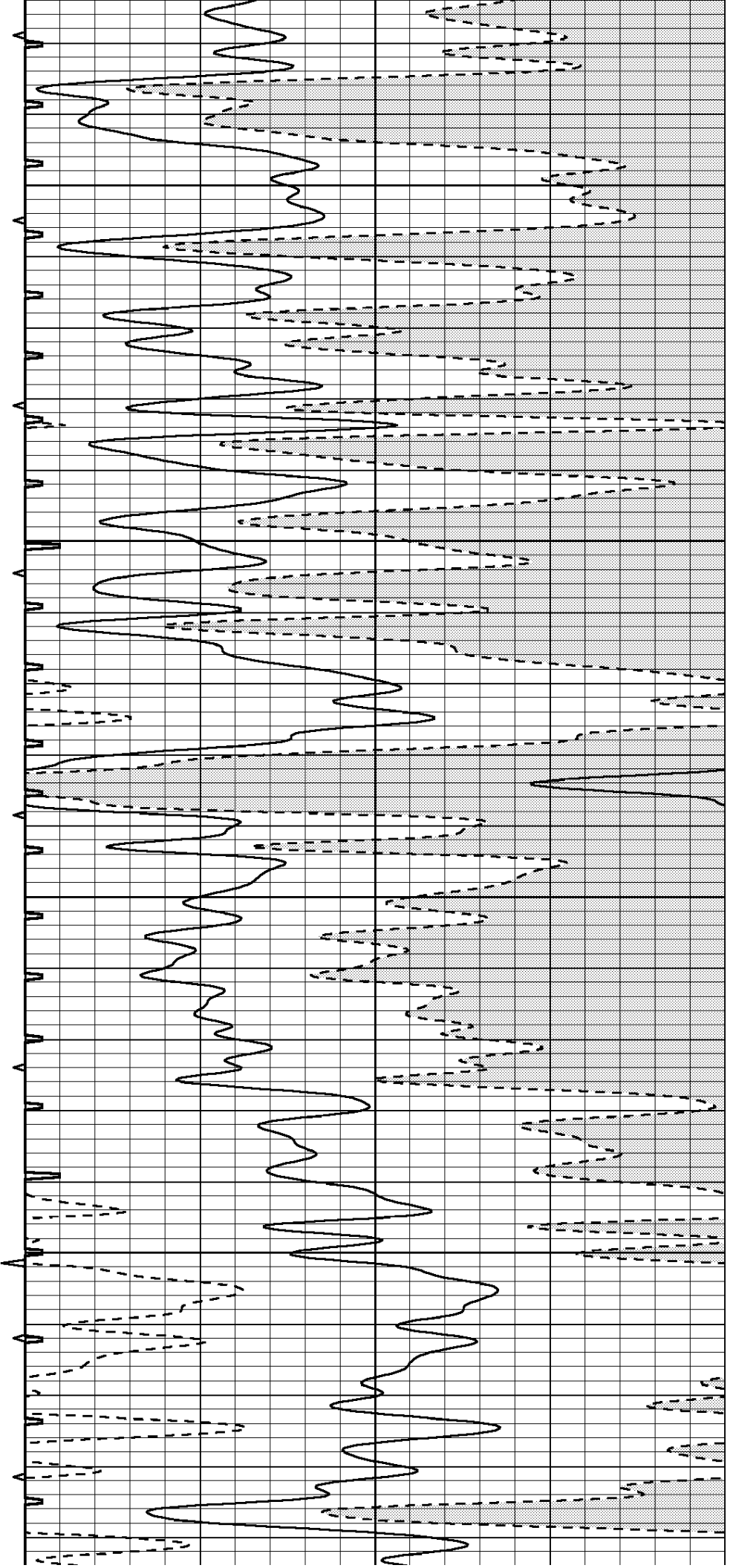


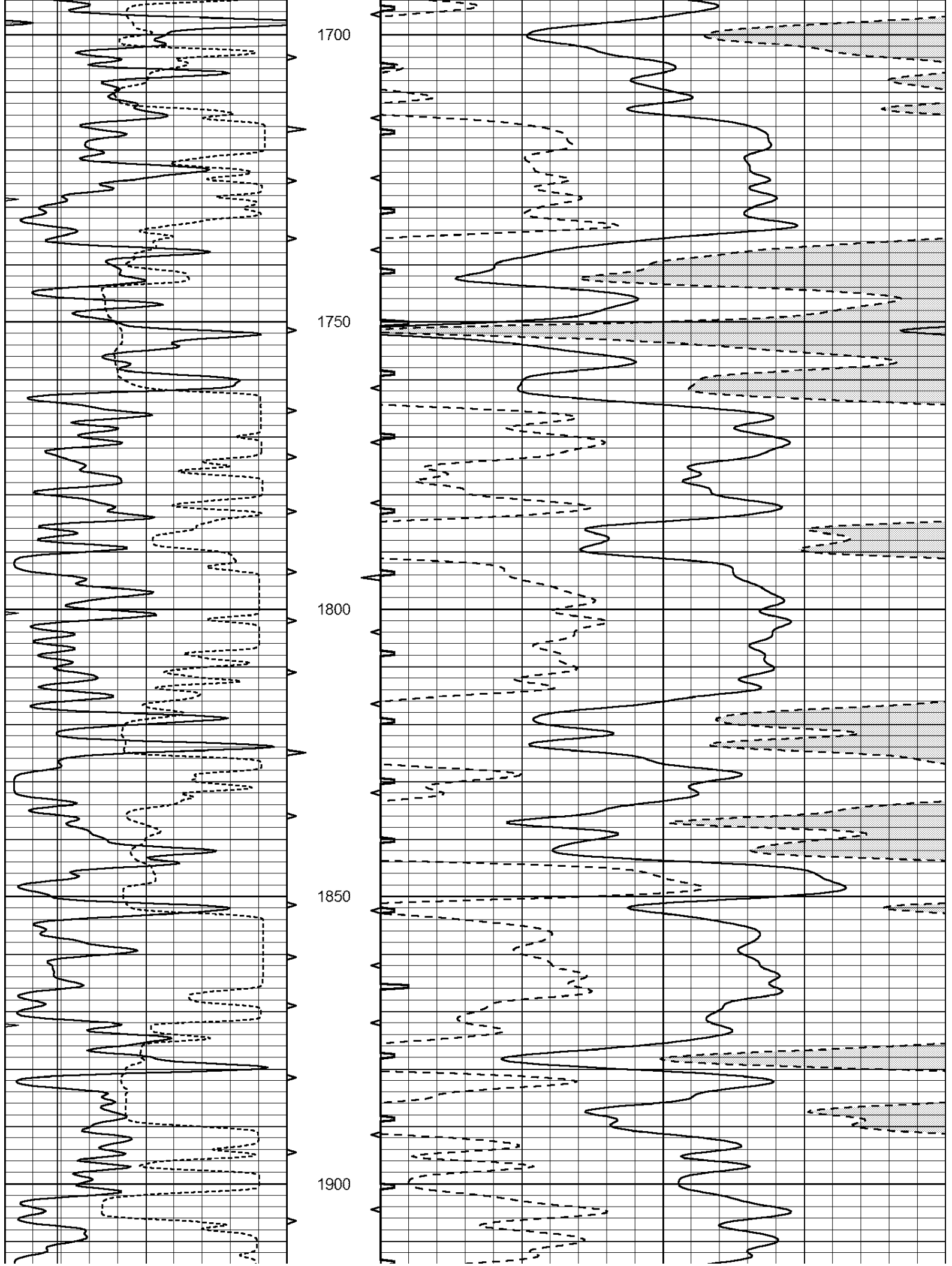
1500

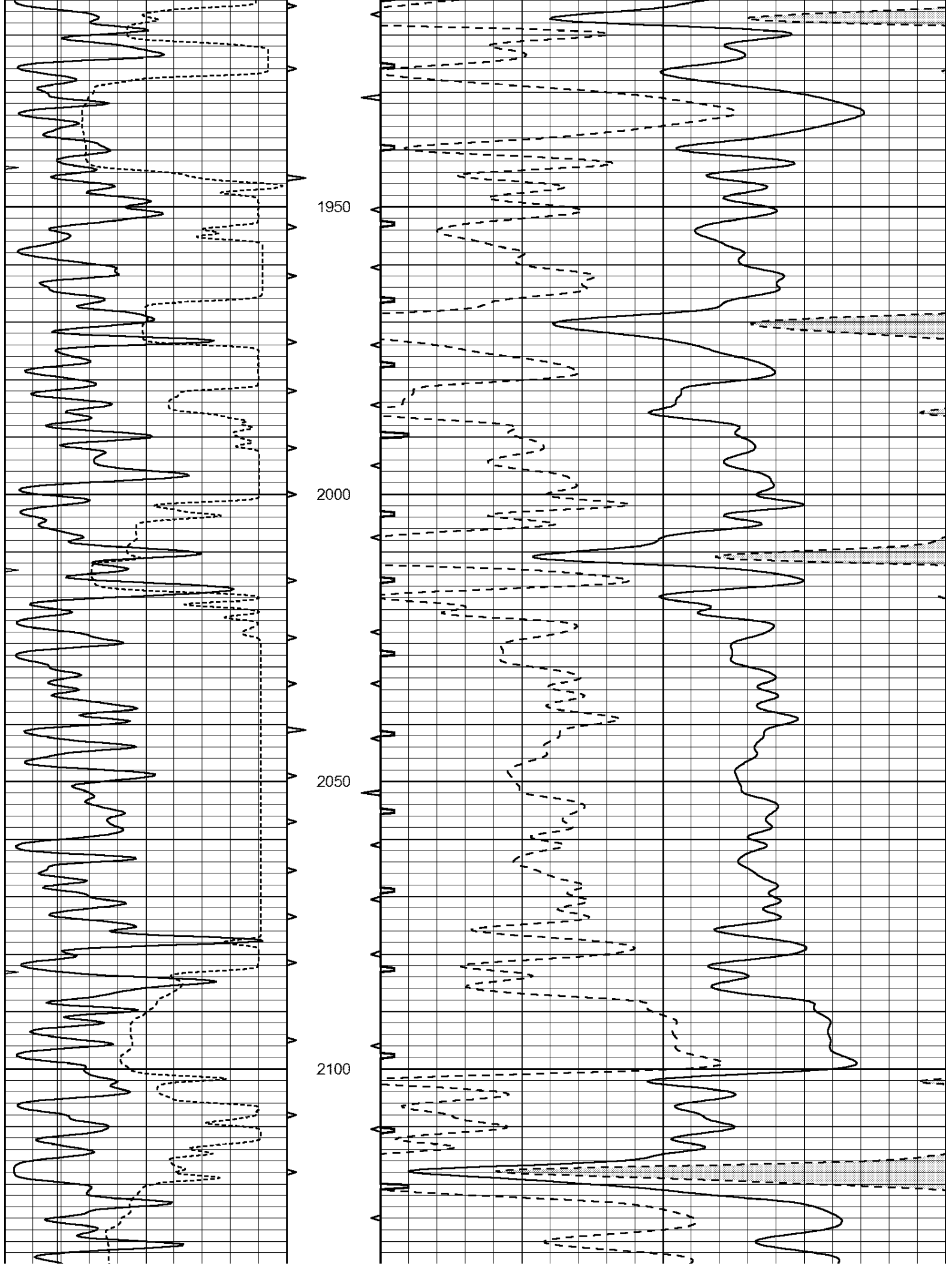
1550

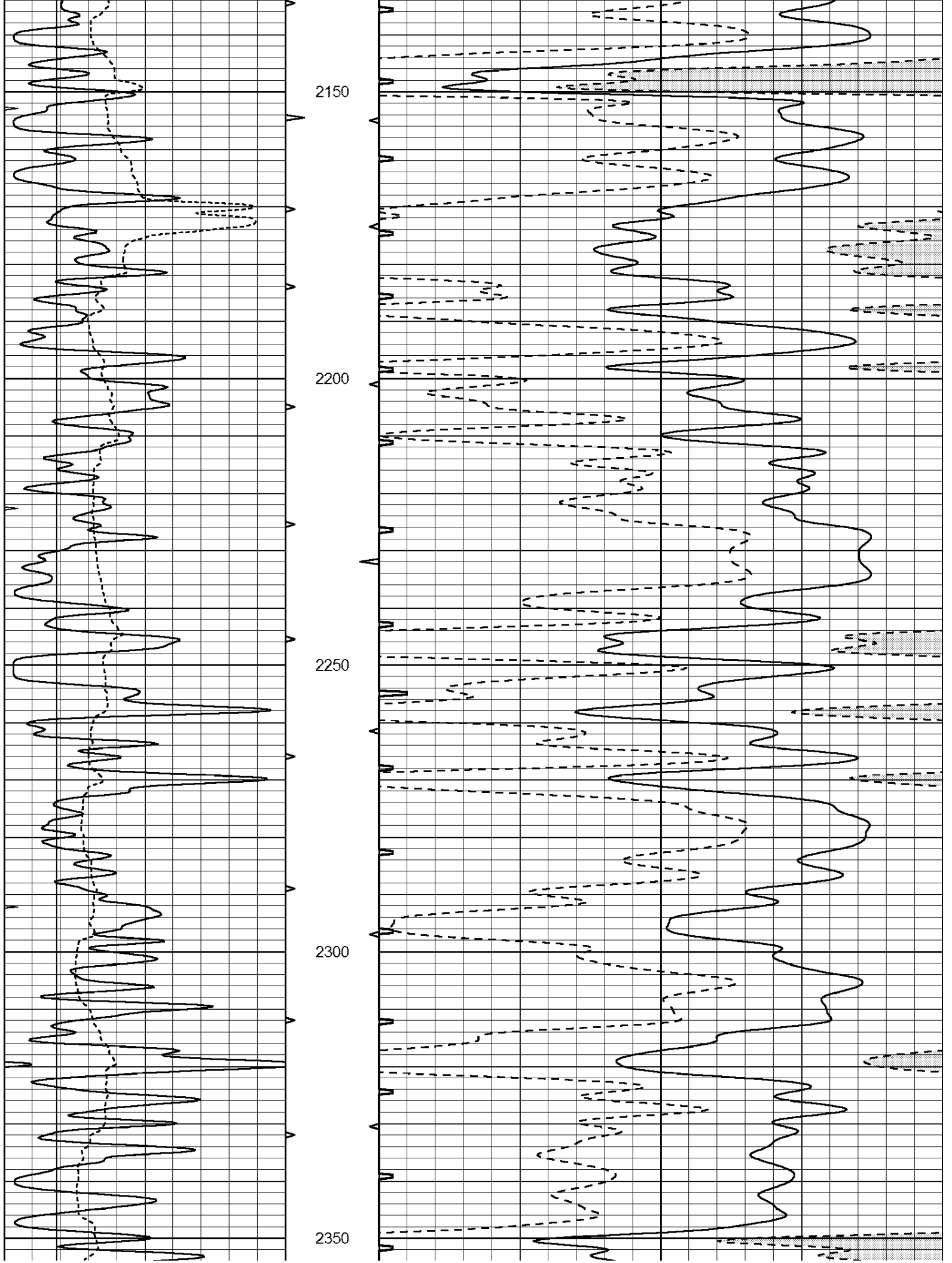
1600

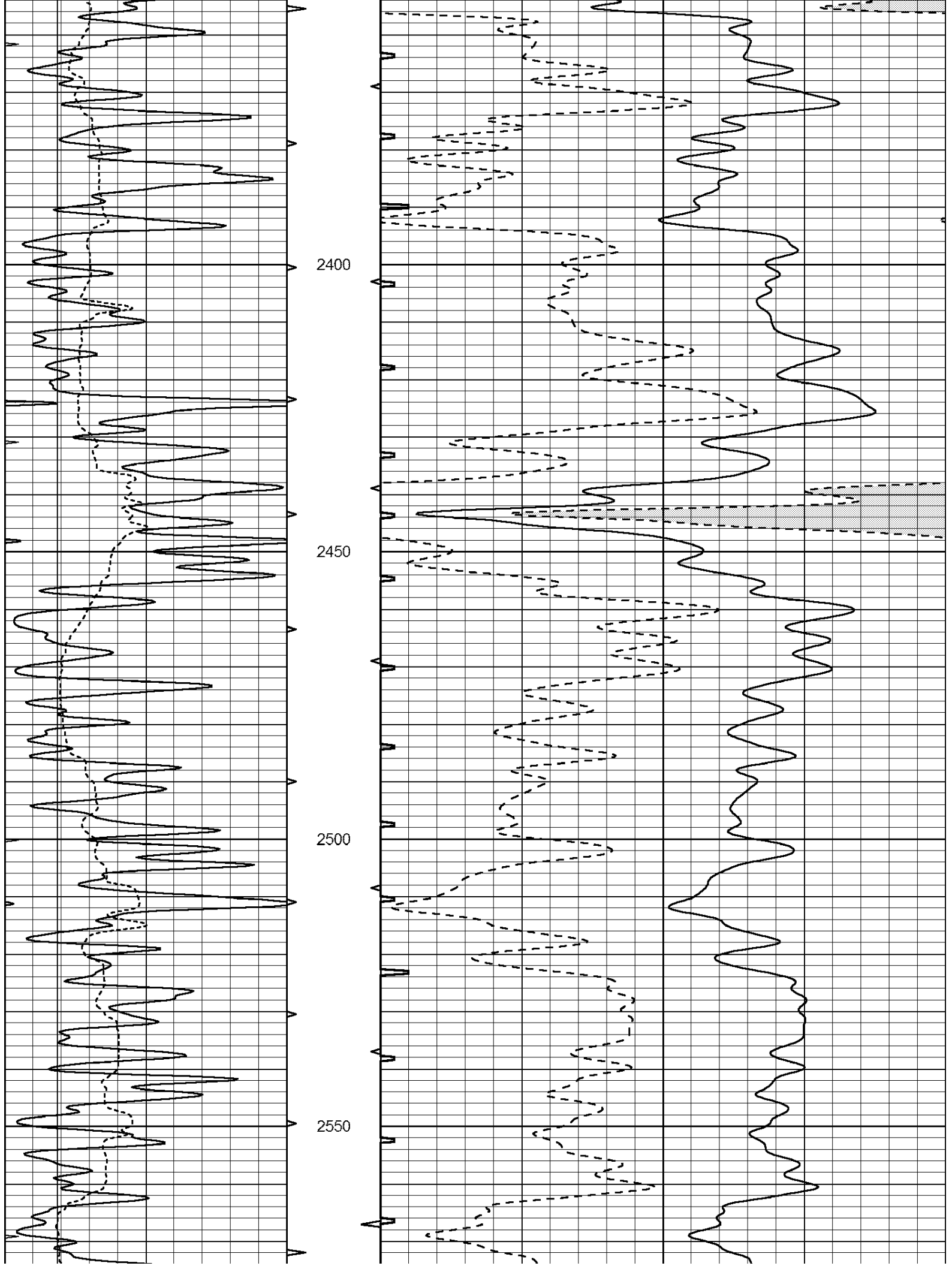
1650

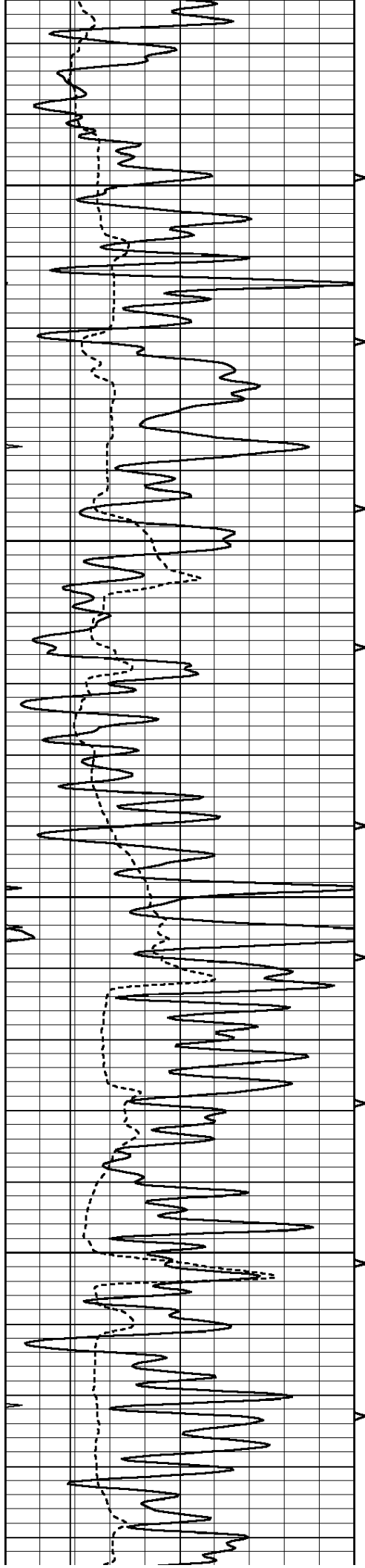










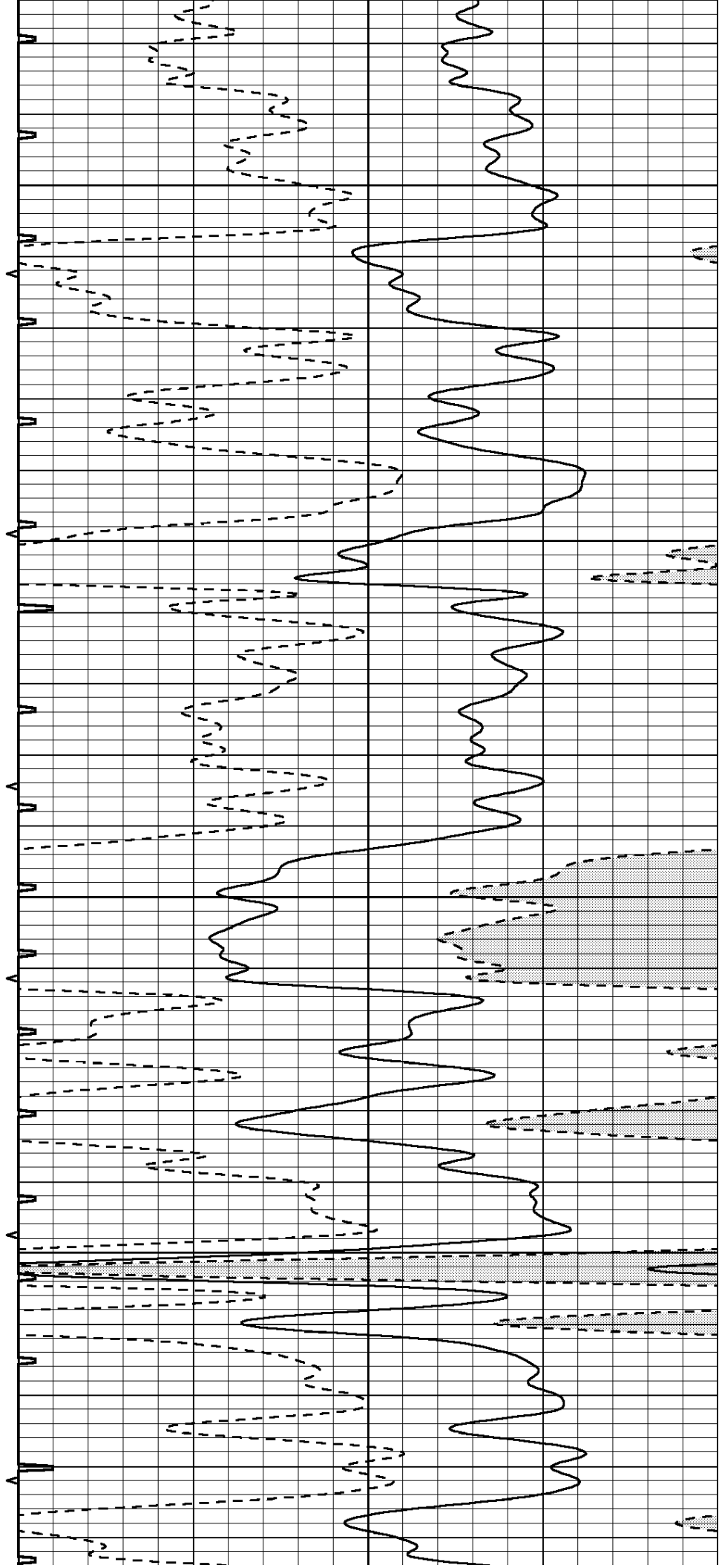


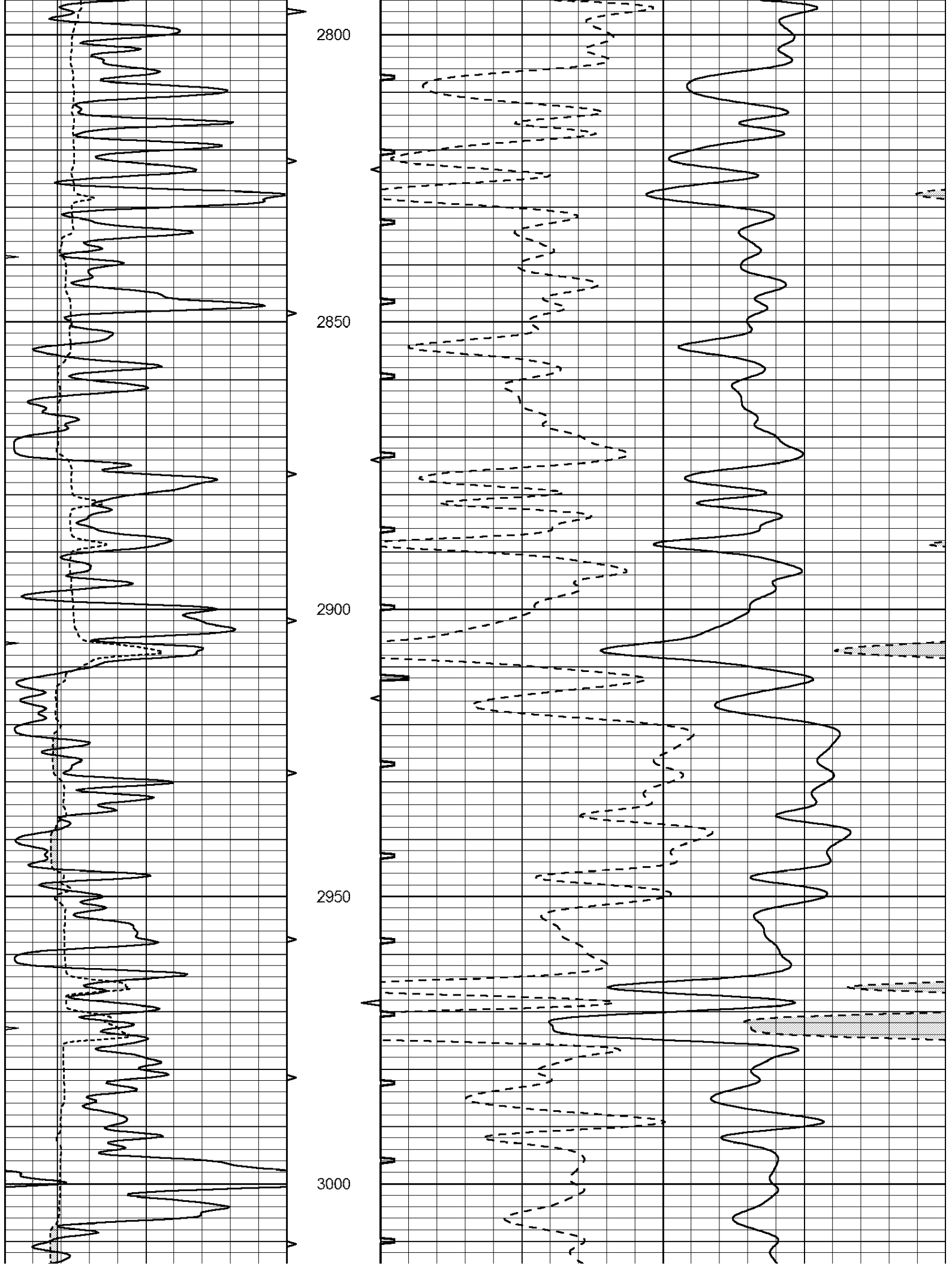
2600

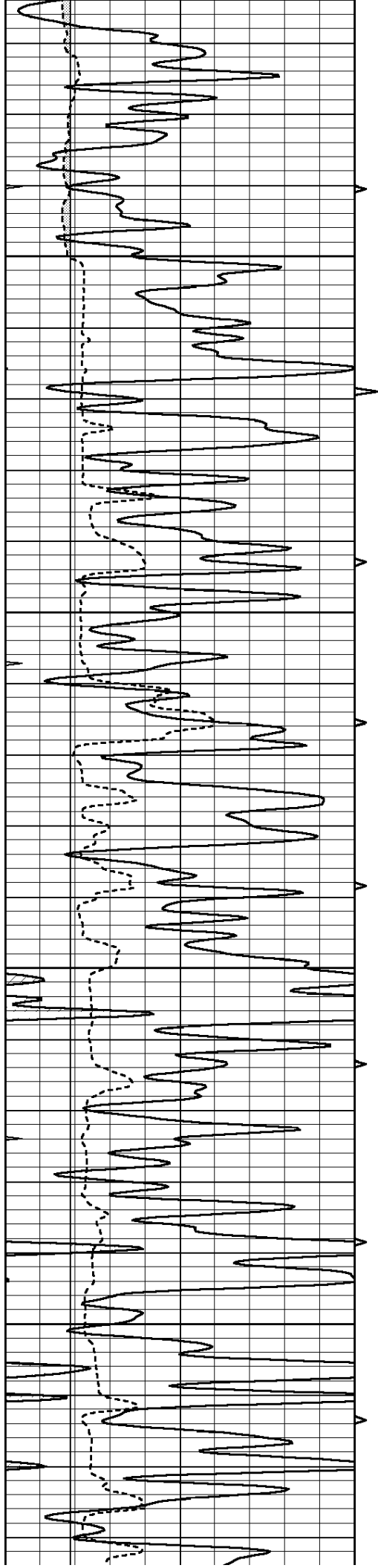
2650

2700

2750





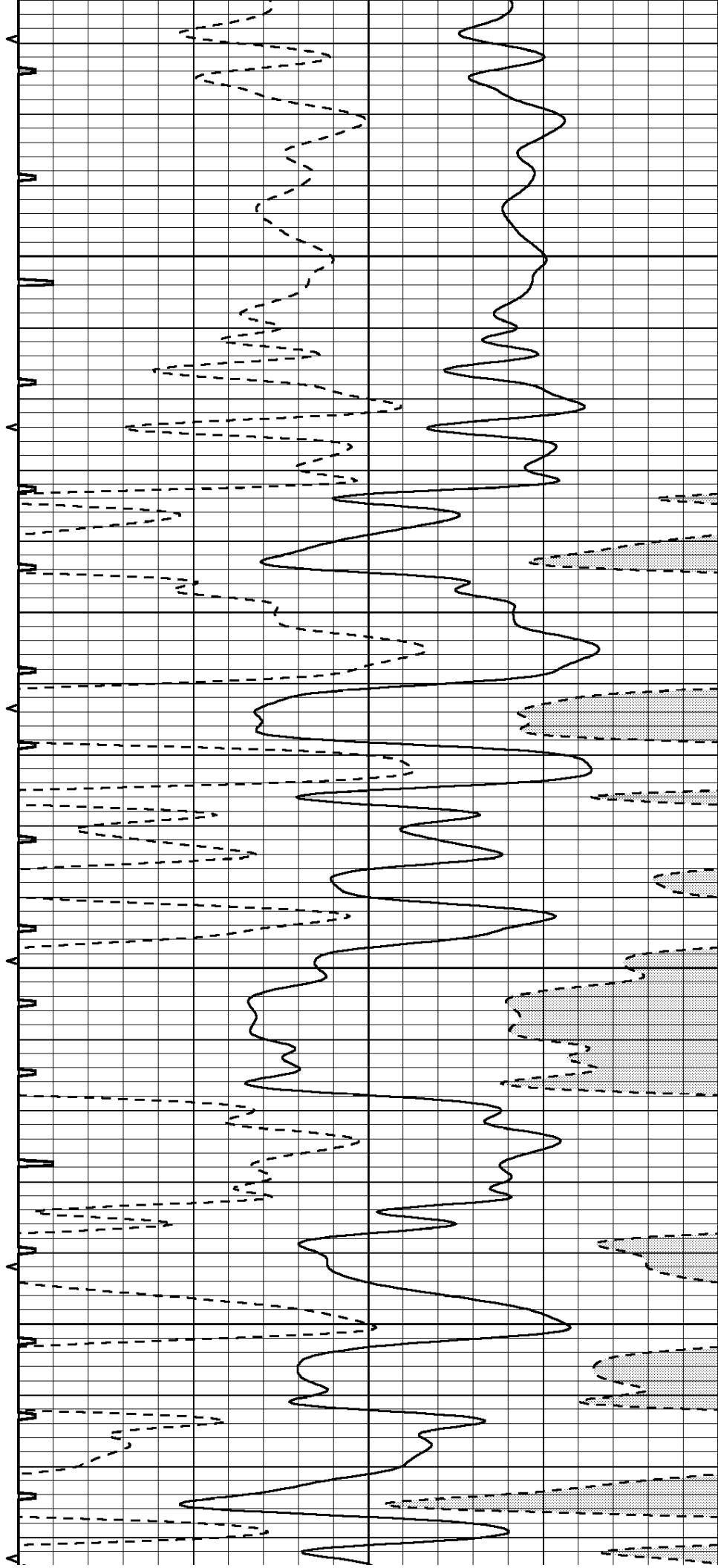


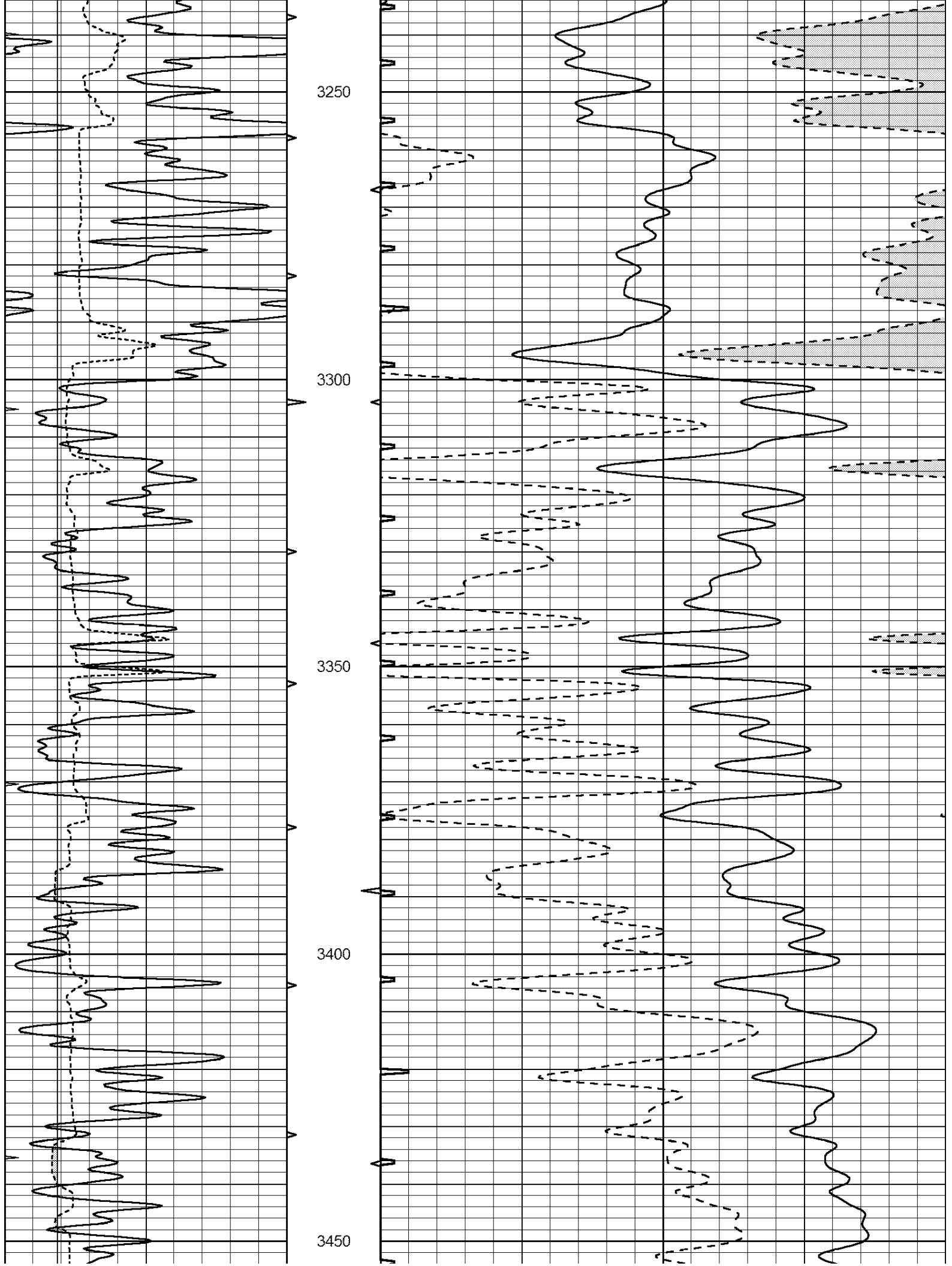
3050

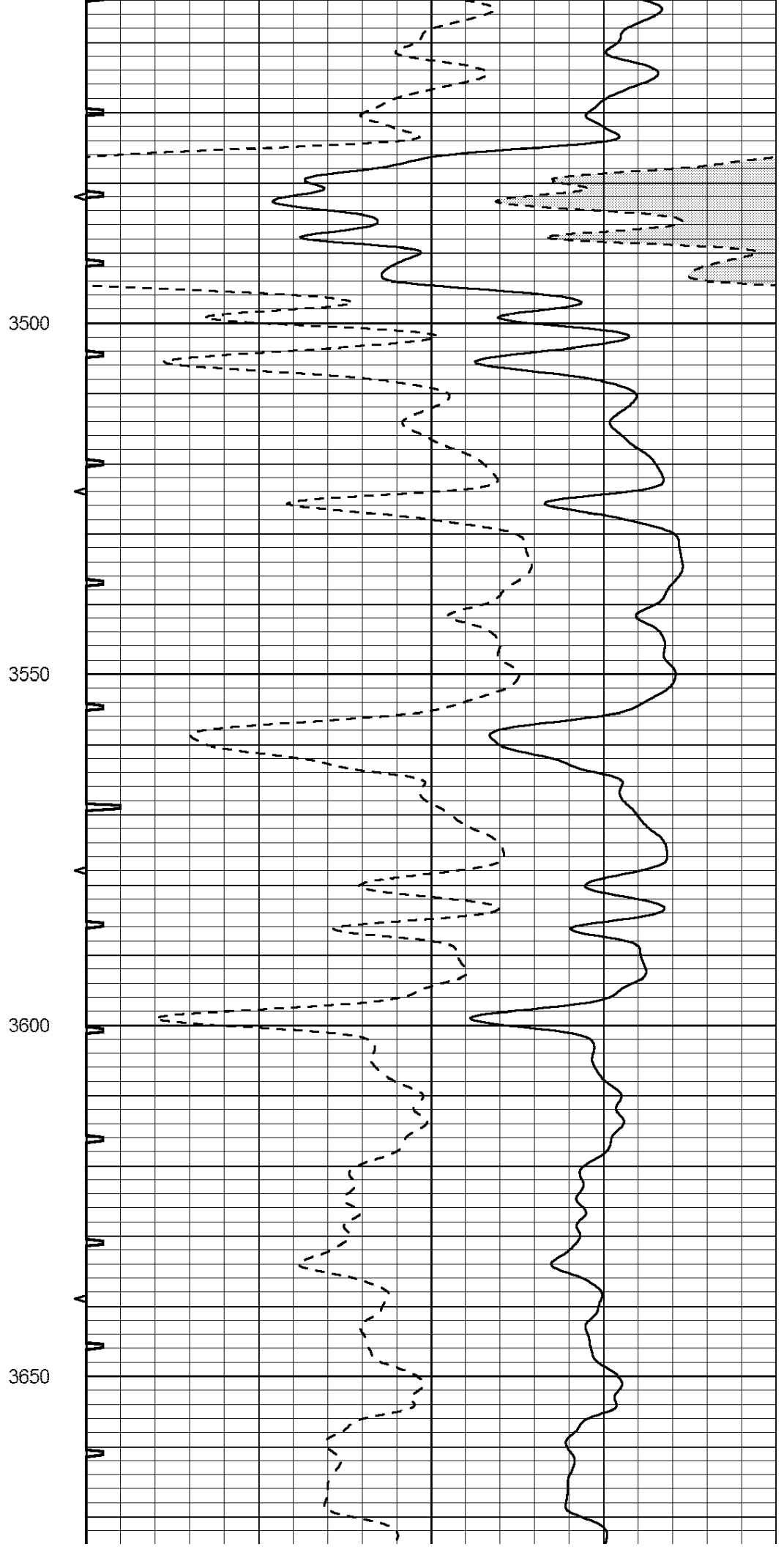
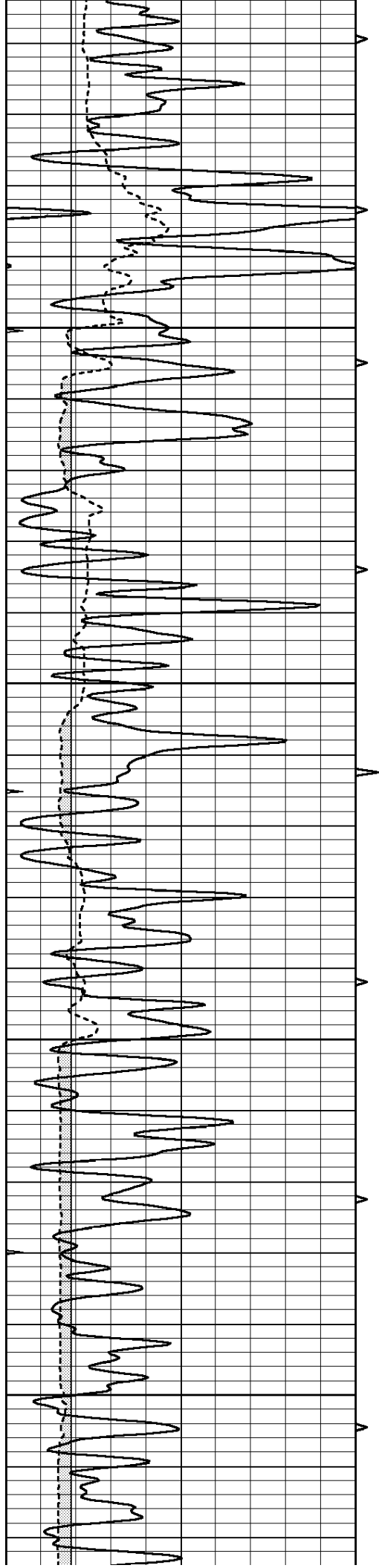
3100

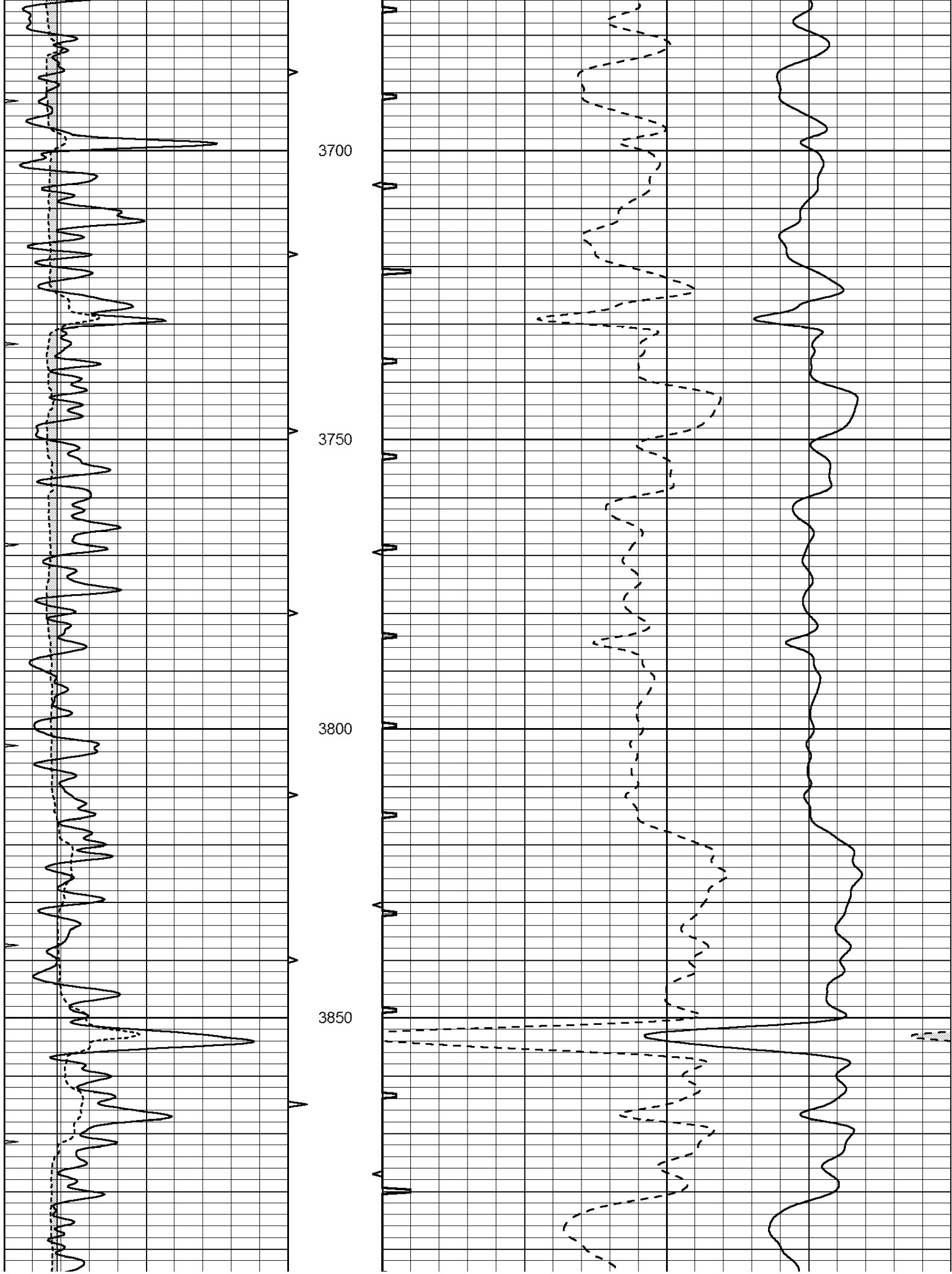
3150

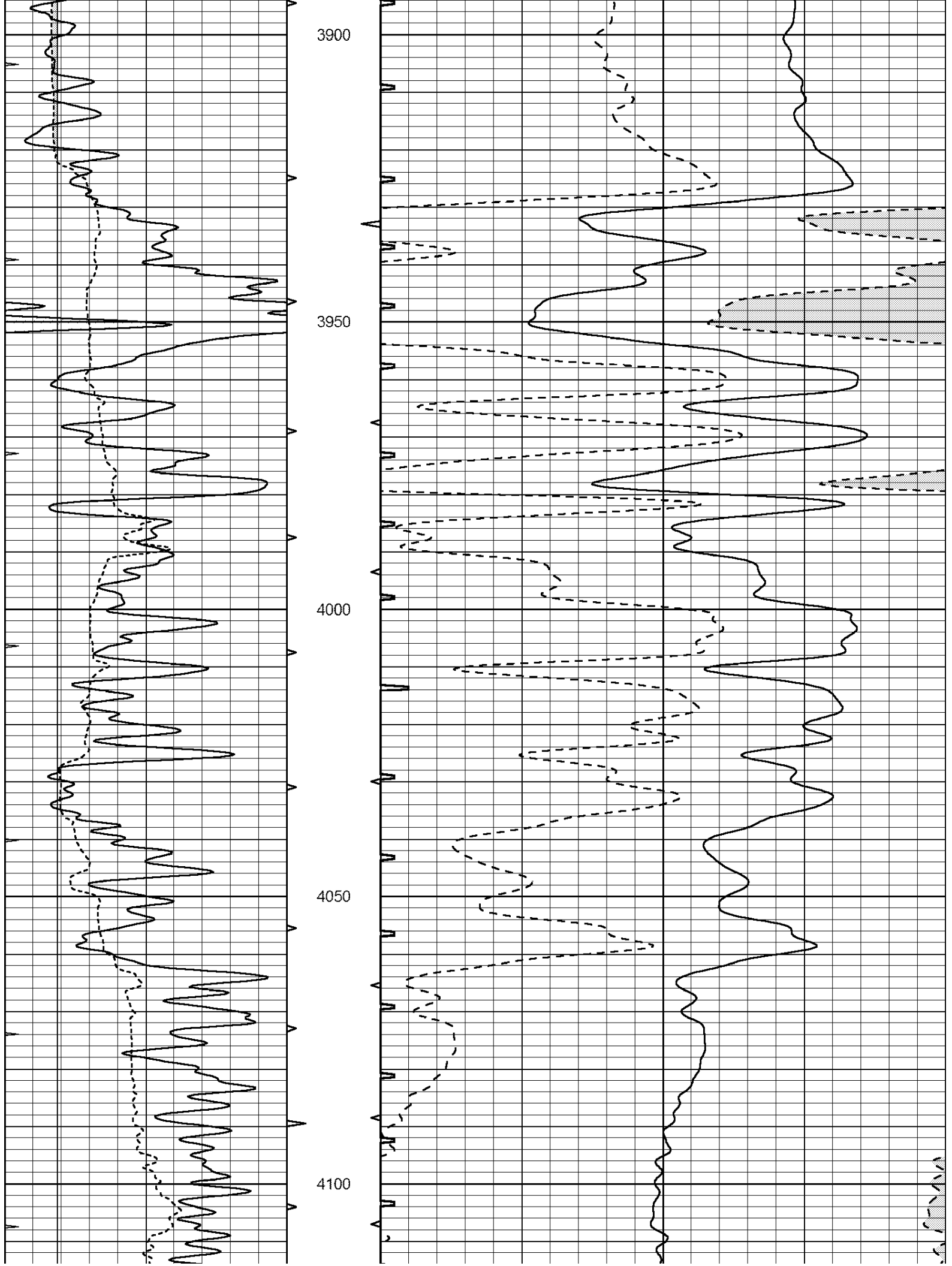
3200

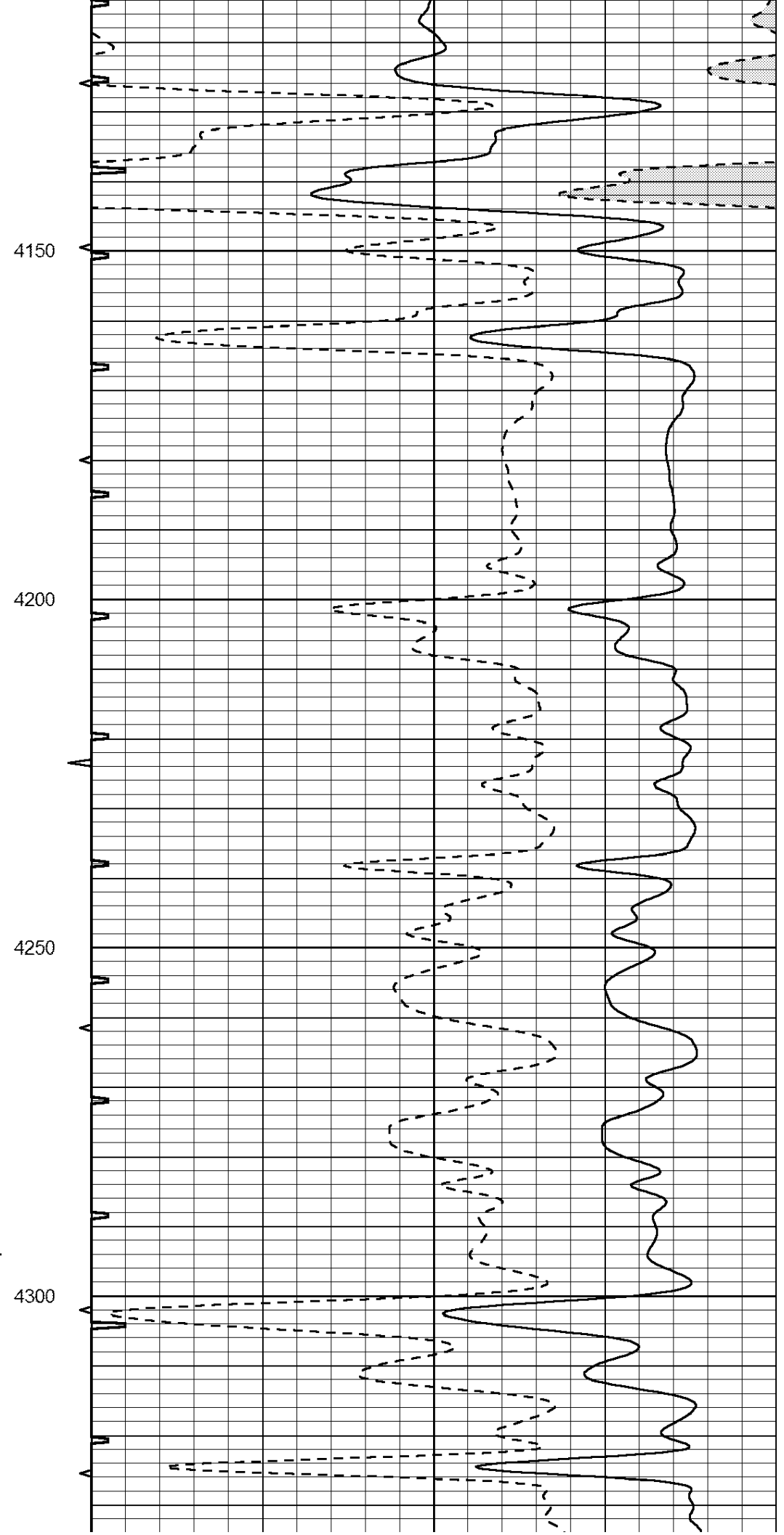
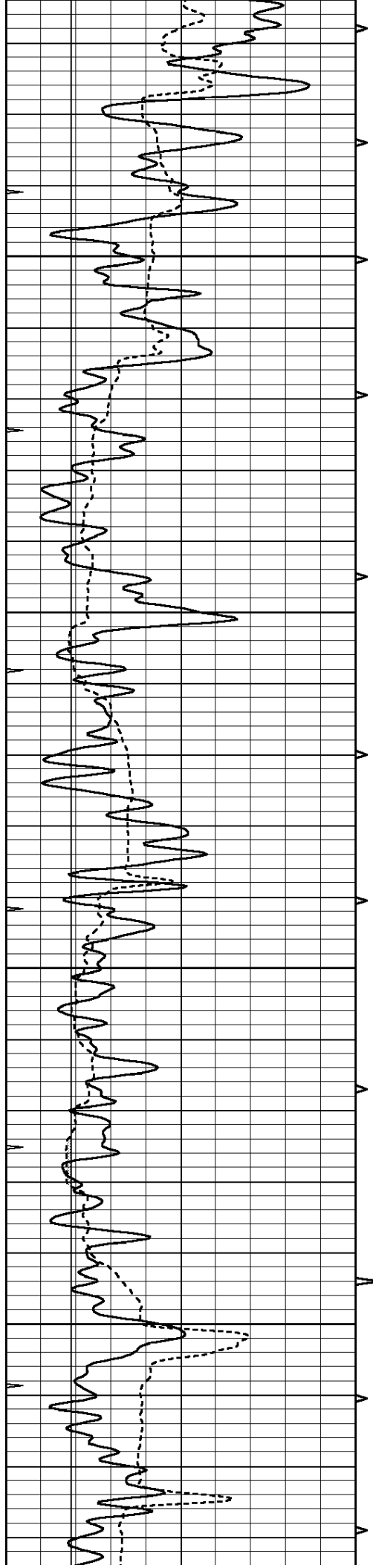


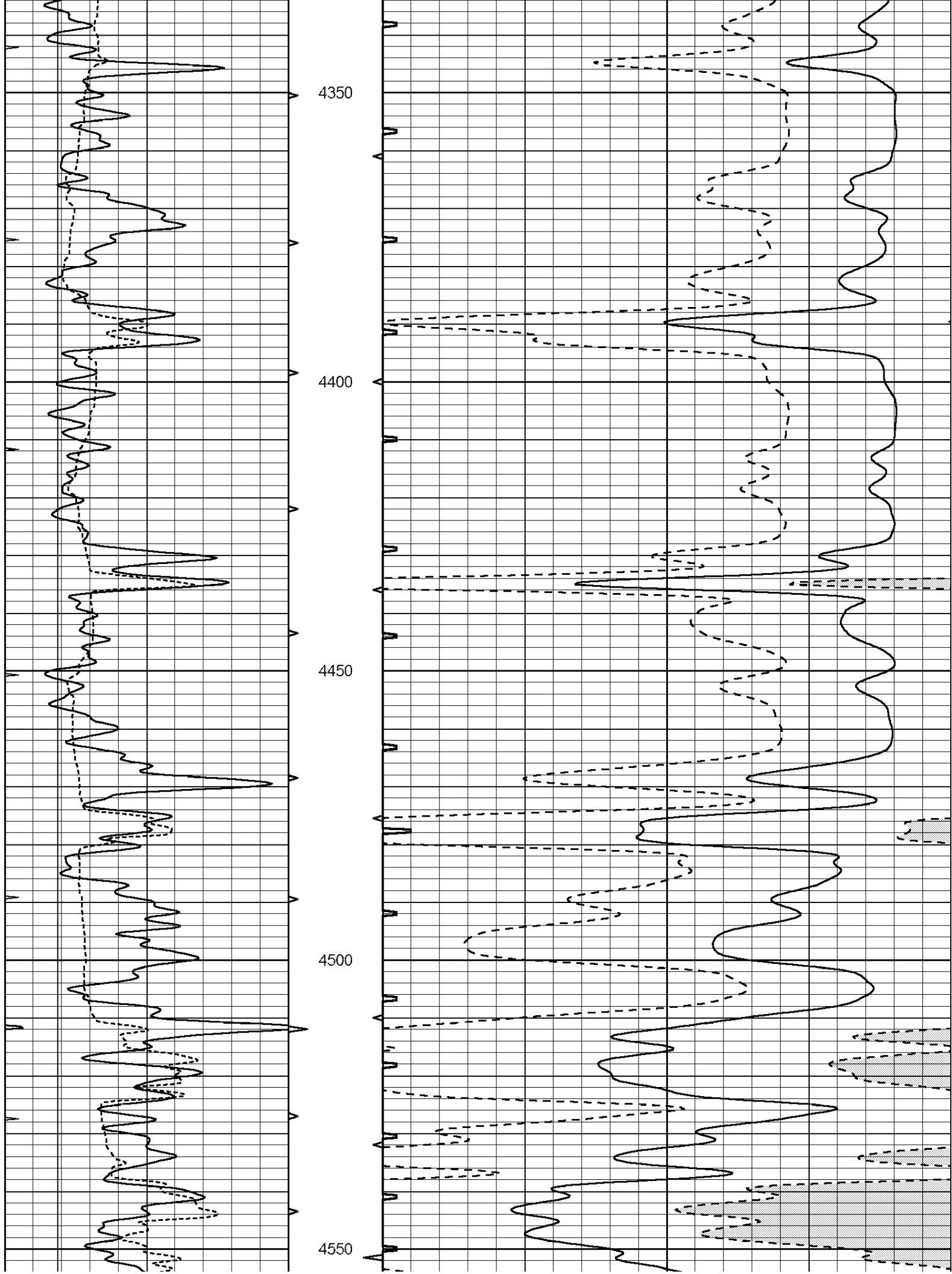


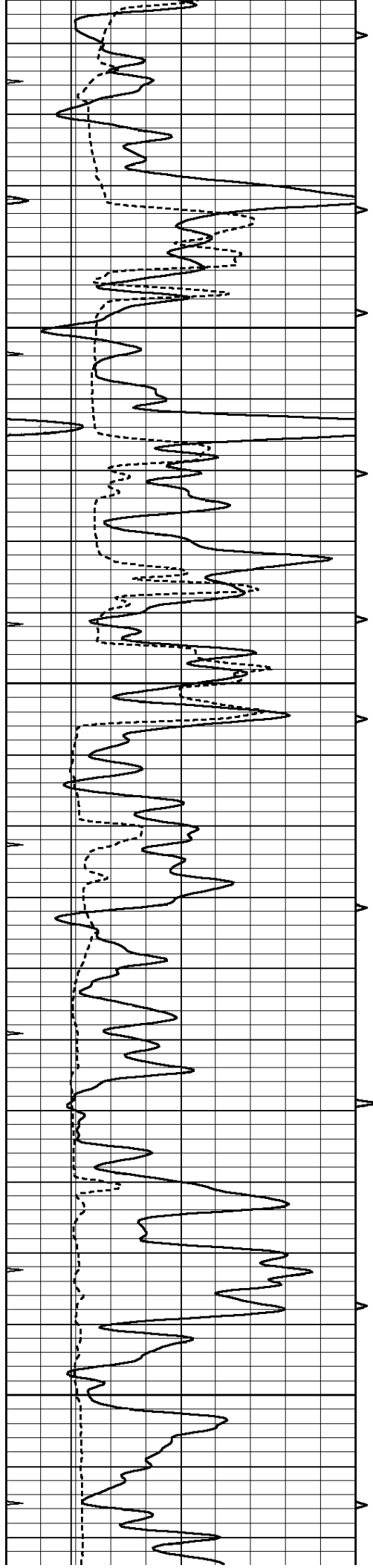










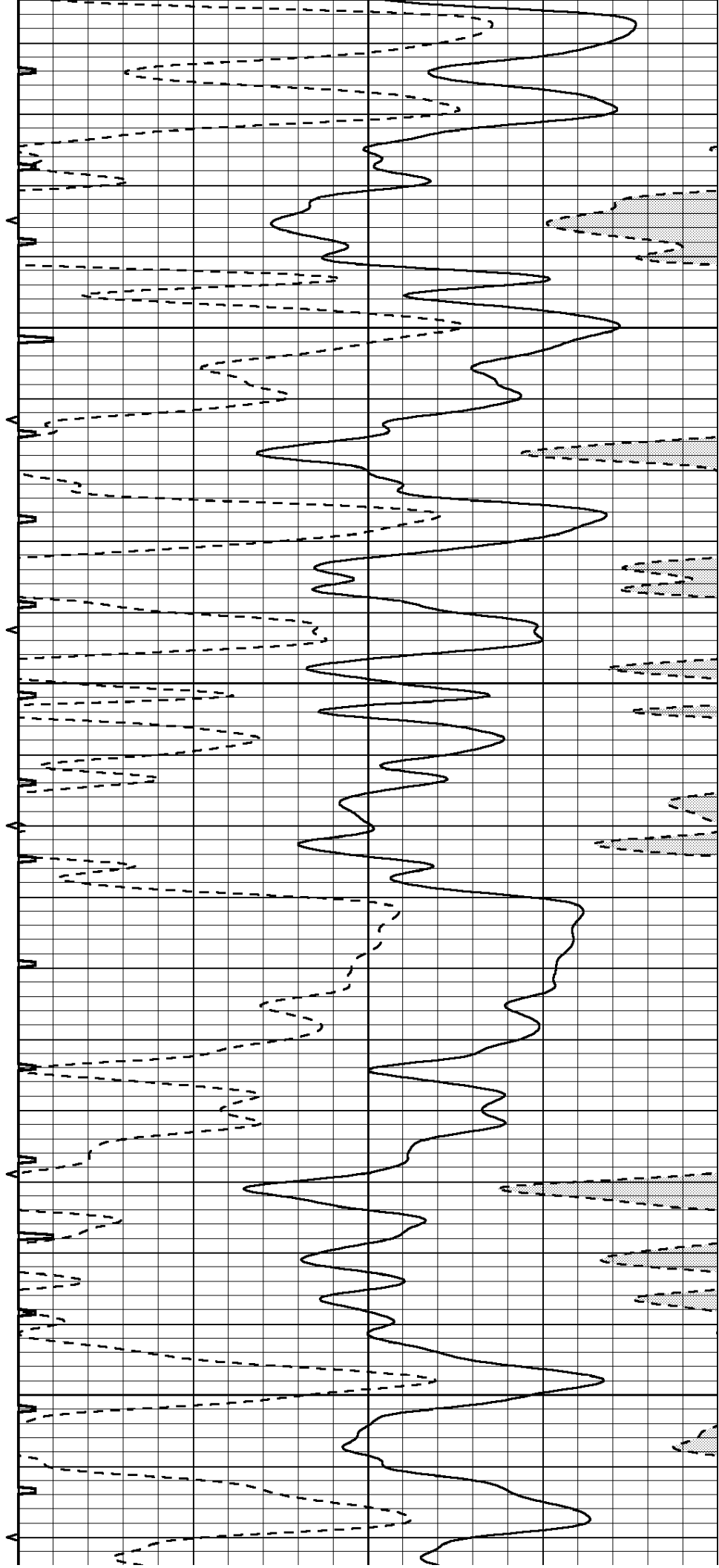


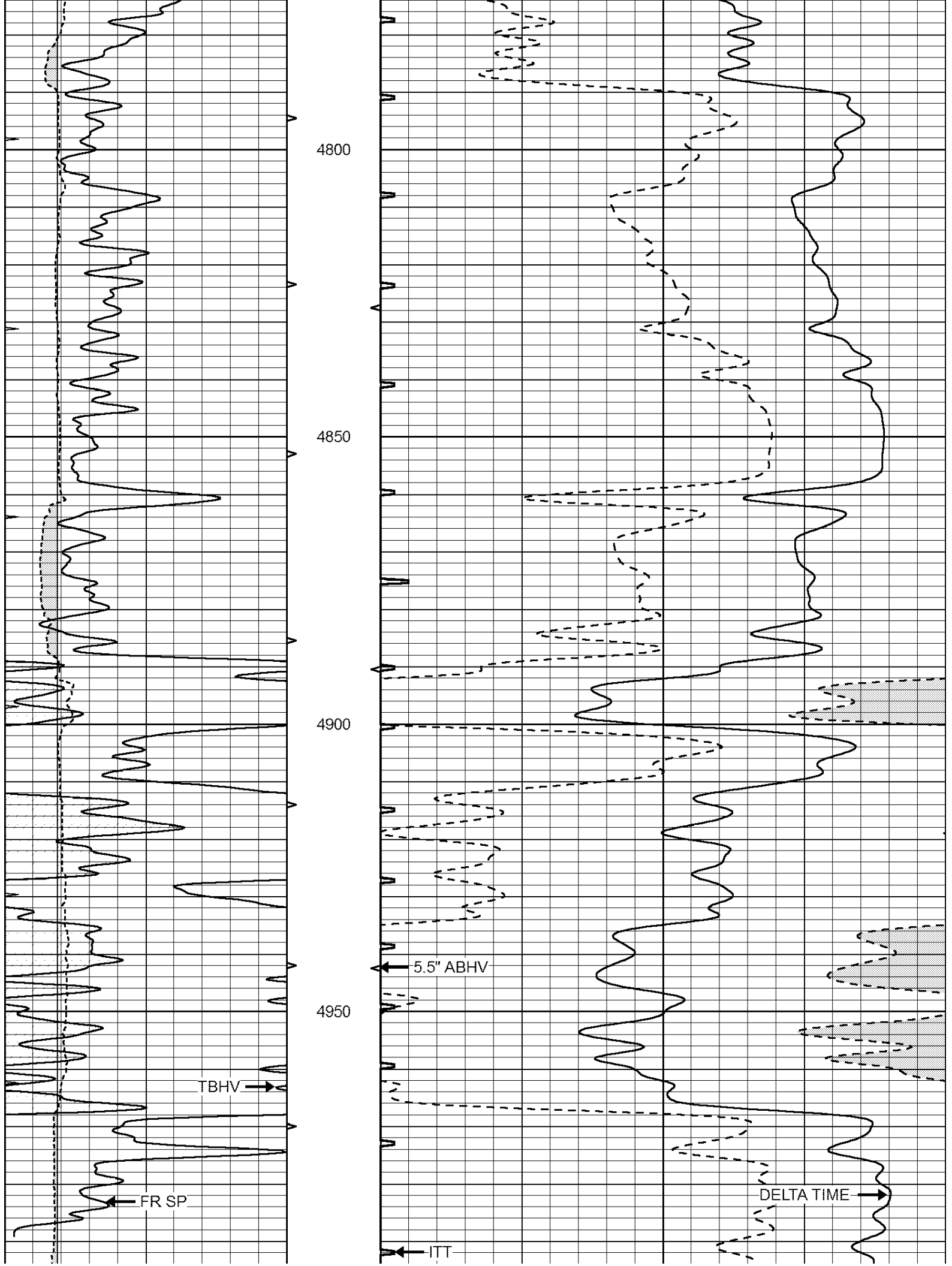
4600

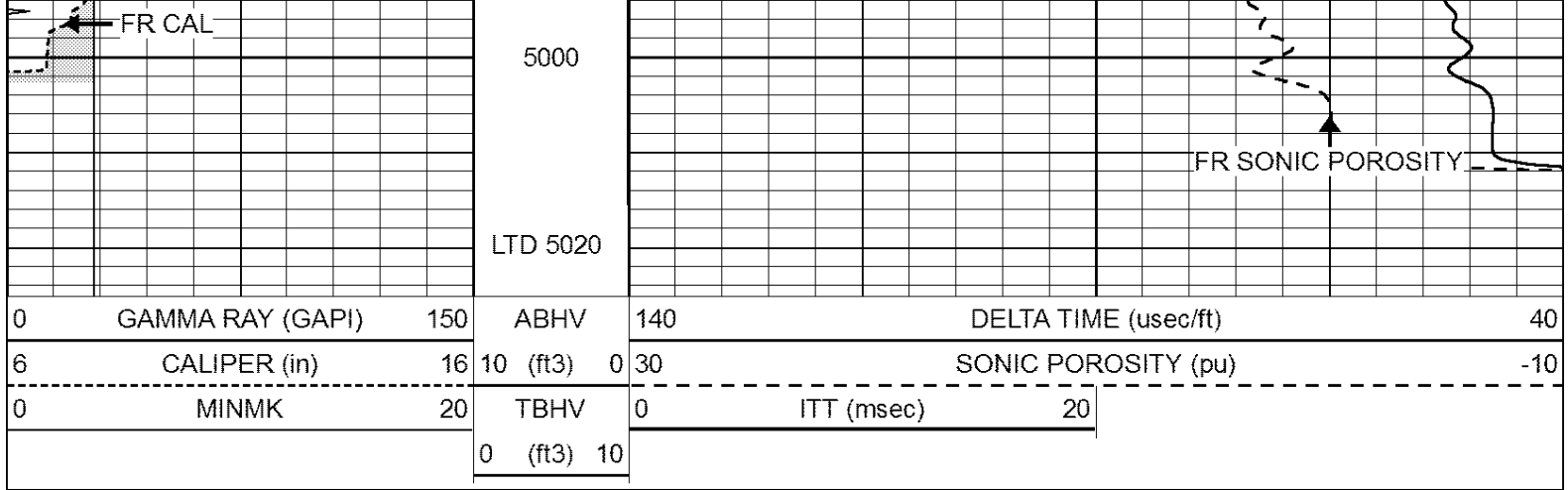
4650

4700

4750



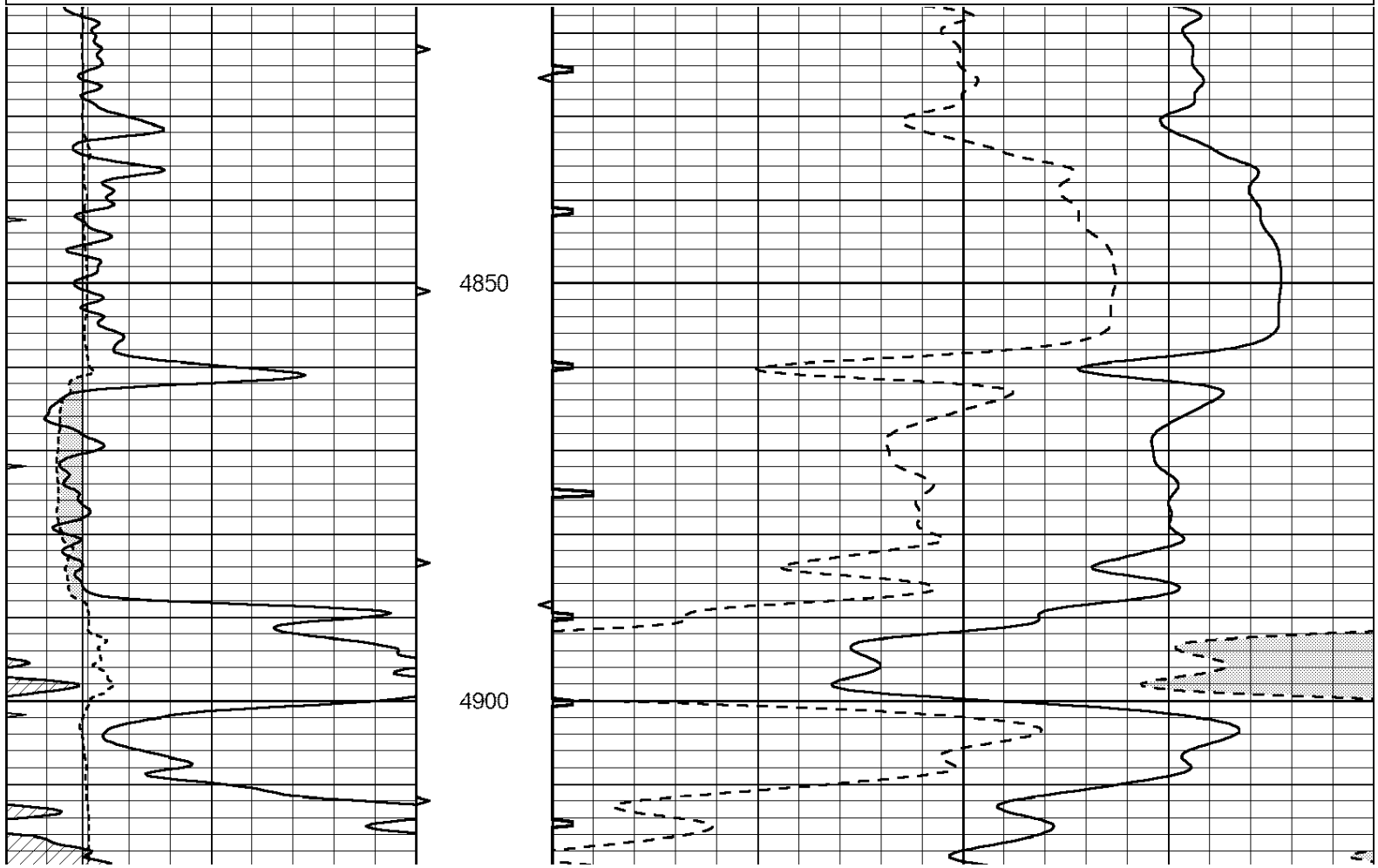
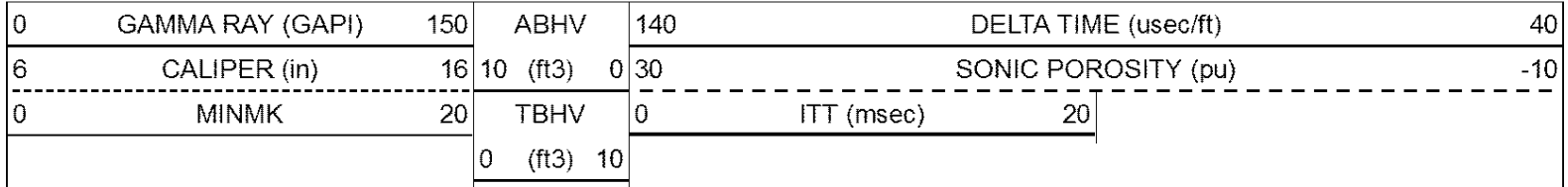


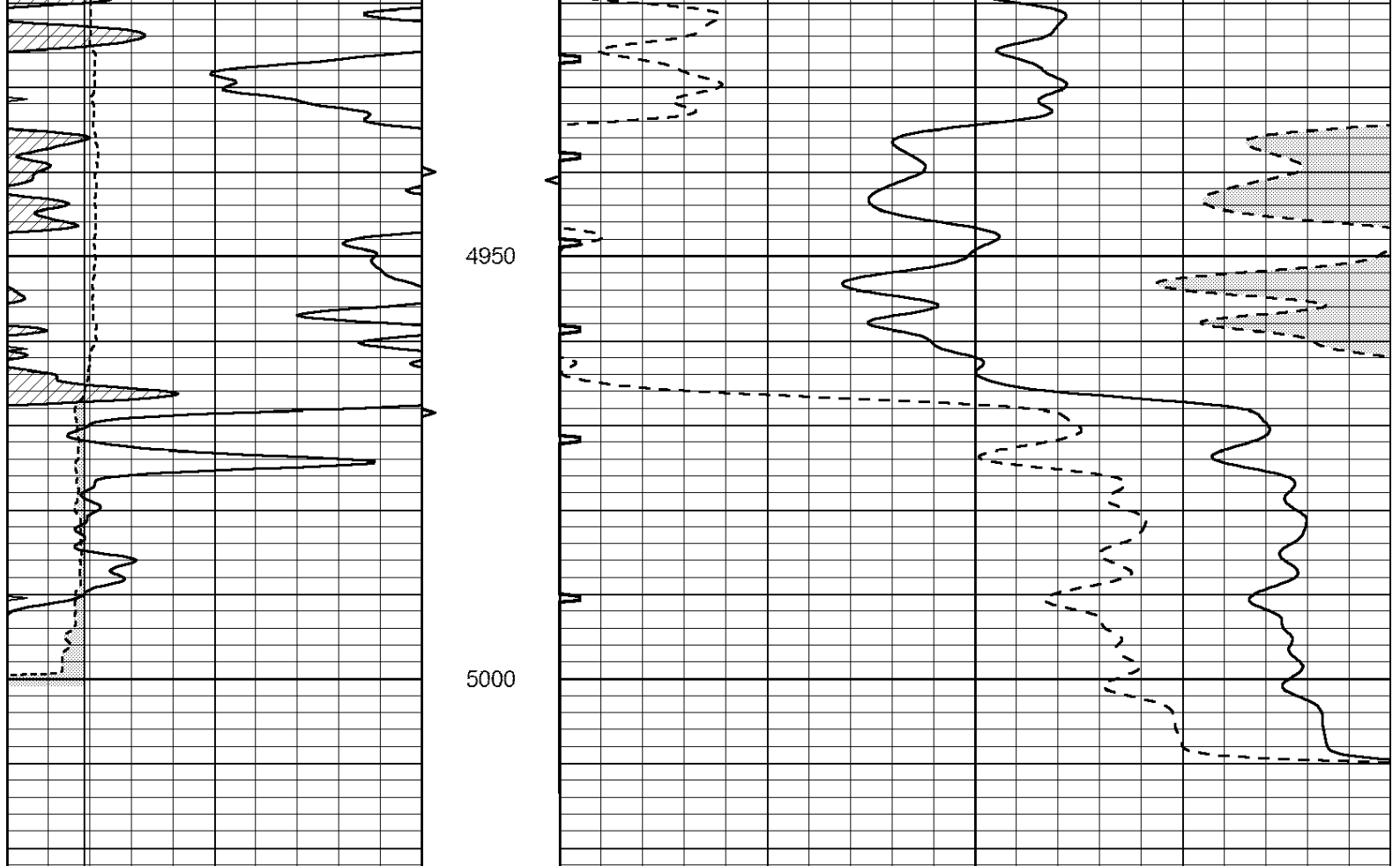


SUPERIOR  
Hays,  
Kansas

# REPEAT SECTION

Database File: 006964pe.db  
 Dataset Pathname: pass5.5  
 Presentation Format: slt  
 Dataset Creation: Wed Jun 01 16:07:56 2011 by Calc Open-Cased 110302  
 Charted by: Depth in Feet scaled 1:240





0	GAMMA RAY (GAPI)	150	ABHV	140	DELTA TIME (usec/ft)	40
6	CALIPER (in)	16	10 (ft3) 0	30	SONIC POROSITY (pu)	-10
0	MINMK	20	TBHV	0	ITT (msec)	20
			0 (ft3) 10			