



SUPERIOR
Hays,
Kansas

MICRO
LOG

Company LOTUS OPERATING COMPANY, LLC.
Well #1 DUNBAR
Field PYLE NORTHWEST
County KIOWA
State KANSAS

Company LOTUS OPERATING COMPANY, LLC.
Well #1 DUNBAR
Field PYLE NORTHWEST
County KIOWA State KANSAS

Location: API # : 15-097-21693-0000
2310' FSL & 2310' FEL
NW - NW - SE
SEC 1 TWP 29S RGE 16W
Permanent Datum GROUND LEVEL Elevation 2055
Log Measured From KELLY BUSHING 9' A.G.L.
Drilling Measured From KELLY BUSHING
Other Services
CDL/CNL/PE
DIL/SONIC
Elevation
K.B. 2064
D.F. 2062
G.L. 2055

Date	6/1/11		
Run Number	TWO		
Depth Driller	5020		
Depth Logger	5020		
Bottom Logged Interval	4997		
Top Log Interval	3800		
Casing Driller	10 3/4"@290'		
Casing Logger	294		
Bit Size	7 7/8"		
Type Fluid in Hole	CHEMICAL MUD	CHLORIDES 5,000 PPM	
Density / Viscosity	9.5/49		
pH / Fluid Loss	9.5/11.2		
Source of Sample	FLOWLINE		
Rm @ Meas. Temp	.500@95F		
Rmt @ Meas. Temp	.375@95F		
Rmc @ Meas. Temp	.600@95F		
Source of Rmf / Rmc	MEASUREMENT		
Rm @ BHT	.360@125F		
Time Circulation Stopped	5 HOURS		
Time Logger on Bottom	1:00 P.M.		
Maximum Recorded Temperature	125F		
Equipment Number	4010		
Location	HAYS, KANSAS		
Recorded By	JEFF LUEBBERS		
Witnessed By	TIM HELLMAN		

<<< Fold Here >>>

All interpretations are opinions based on inferences from electrical or other measurements and we cannot and do not guarantee the accuracy or correctness of any interpretation, and we shall not, except in the case of gross or willful negligence on our part, be liable or responsible for any loss, costs, damages, or expenses incurred or sustained by anyone resulting from any interpretation made by any of our officers, agents or employees. These interpretations are also subject to our general terms and conditions set out in our current Price Schedule.

Comments

THANK YOU FOR USING SUPERIOR WELL SERVICE HAYS, KANSAS (785) 628-6395
DIRECTIONS
HAVILAND, KS. E. ON HWY 54 TO "140TH RD." (CROFT BLKTOP) 4 1/2 S. TO "60TH RD.", 1 1/2W., S. INTO

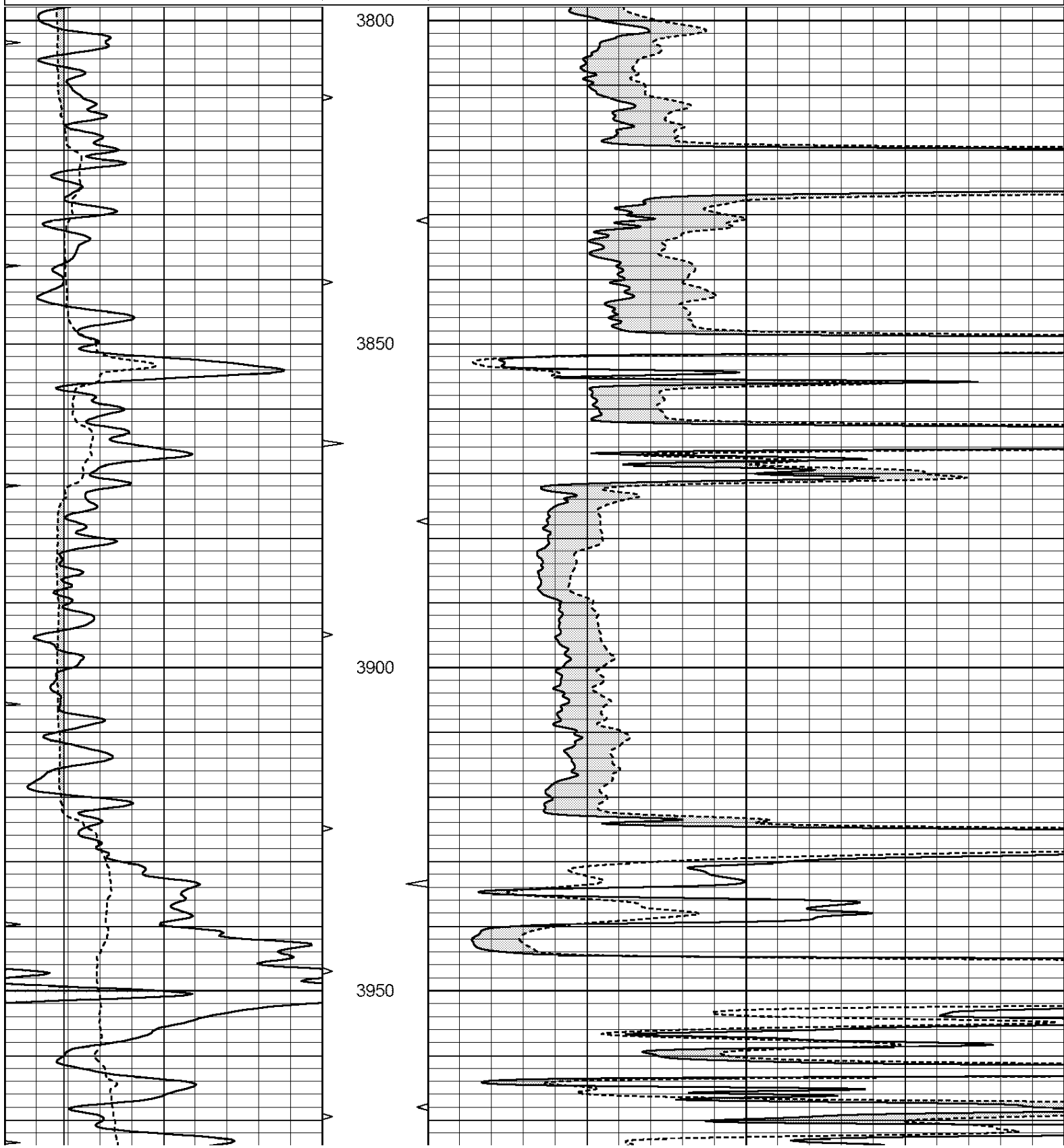


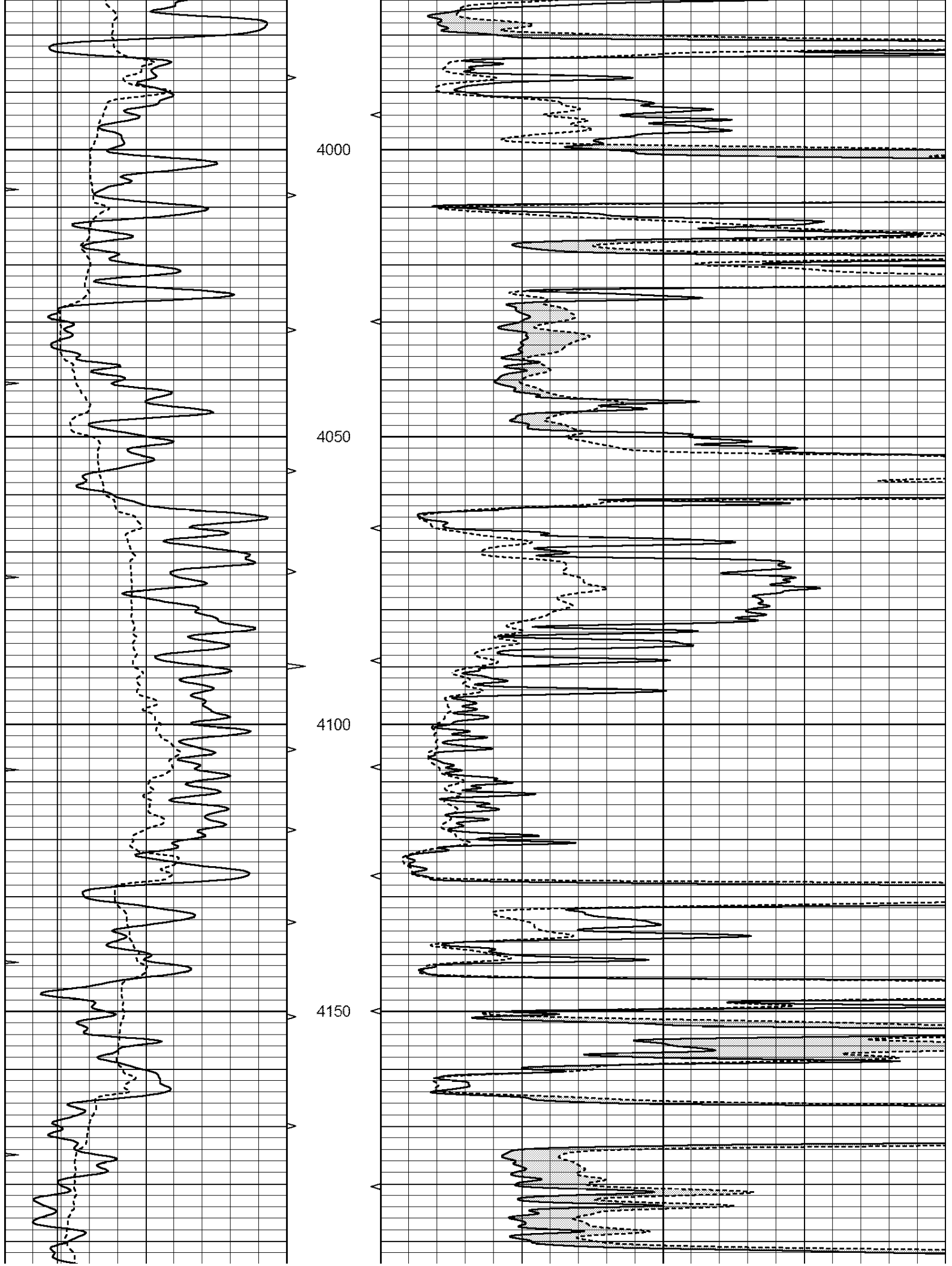
SUPERIOR
Hays,
Kansas

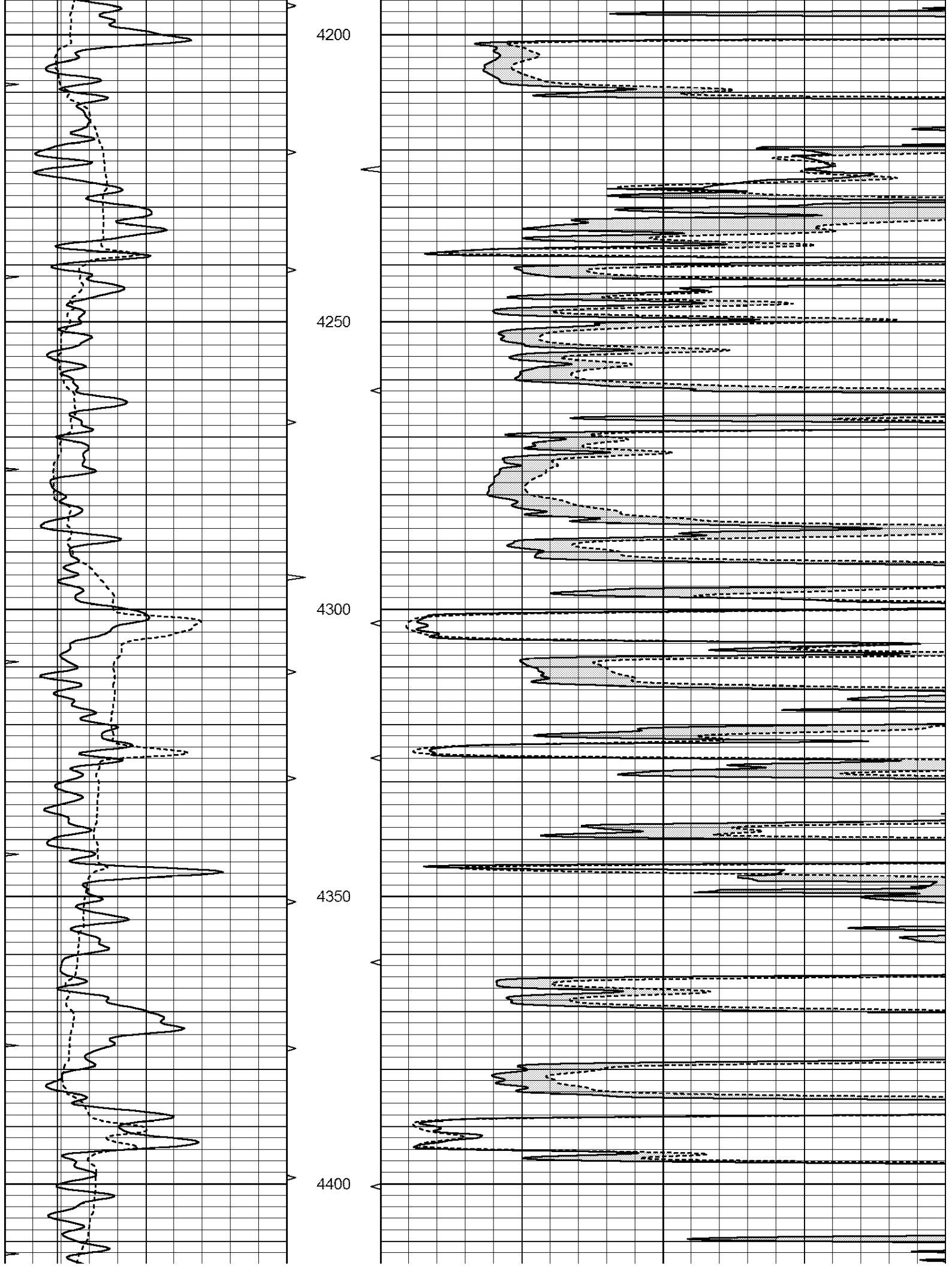
MAIN SECTION

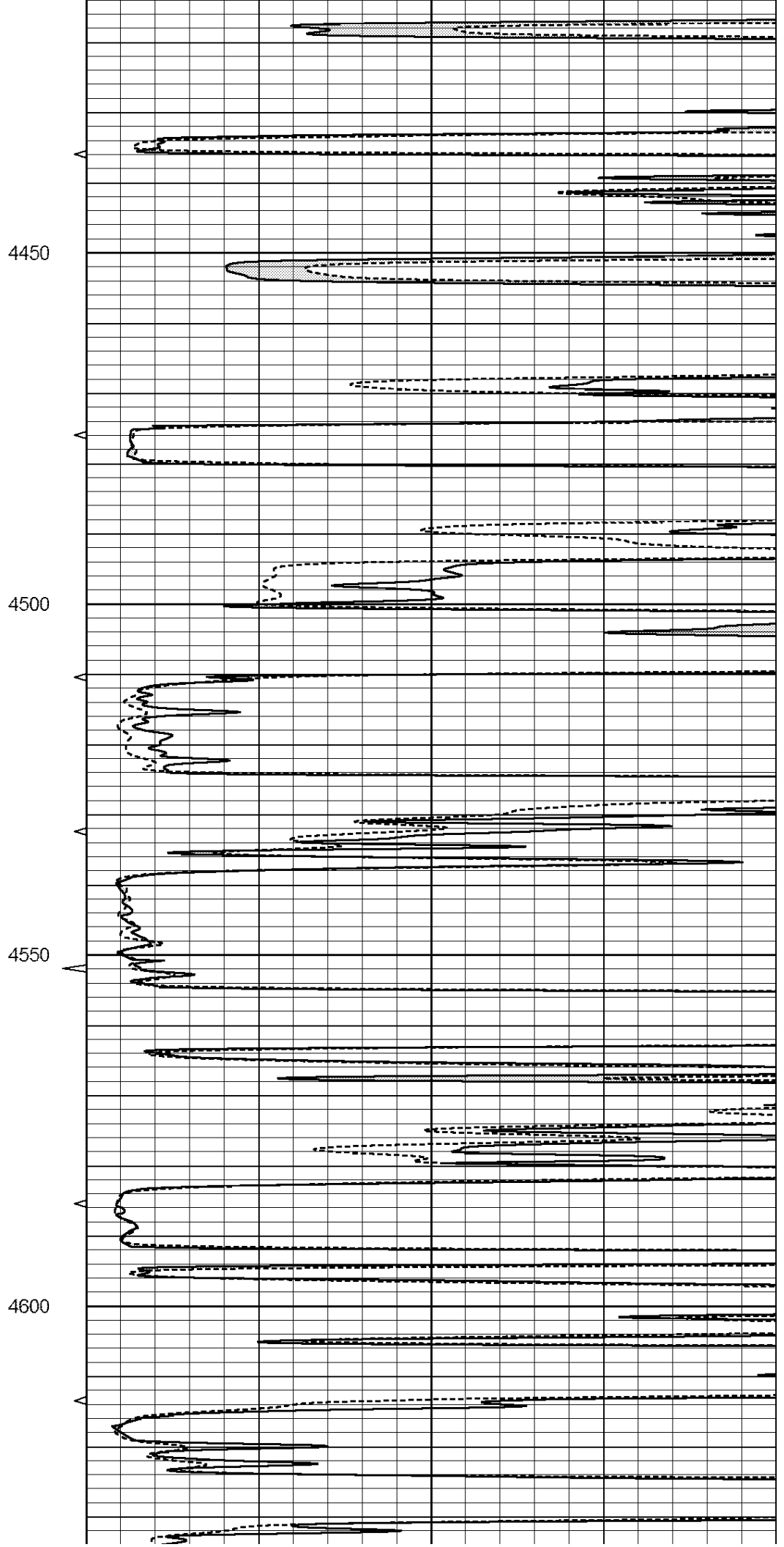
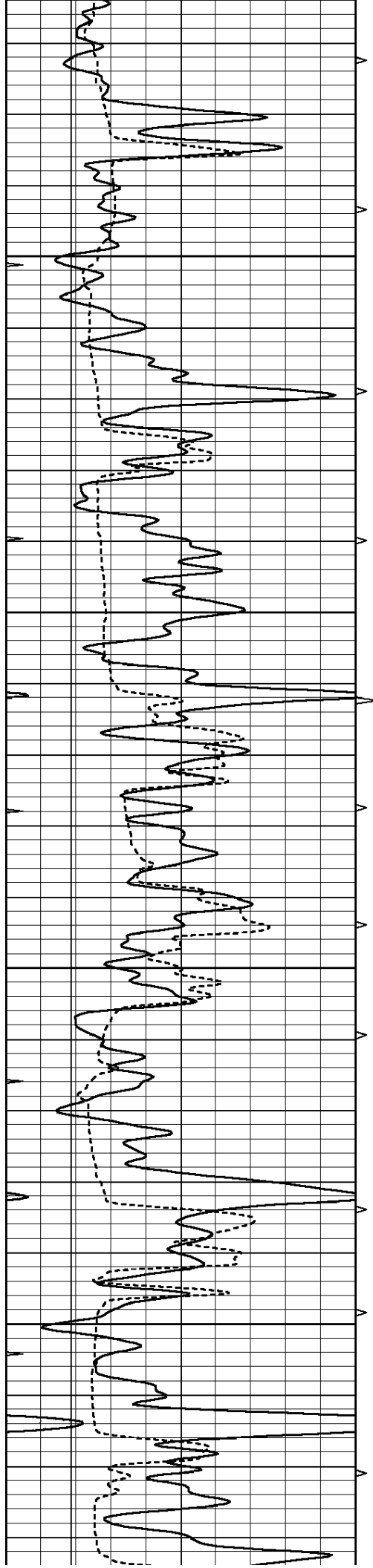
Database File: 006964pe.db
 Dataset Pathname: pass6.7
 Presentation Format: micro
 Dataset Creation: Wed Jun 01 16:46:55 2011
 Charted by: Depth in Feet scaled 1:240

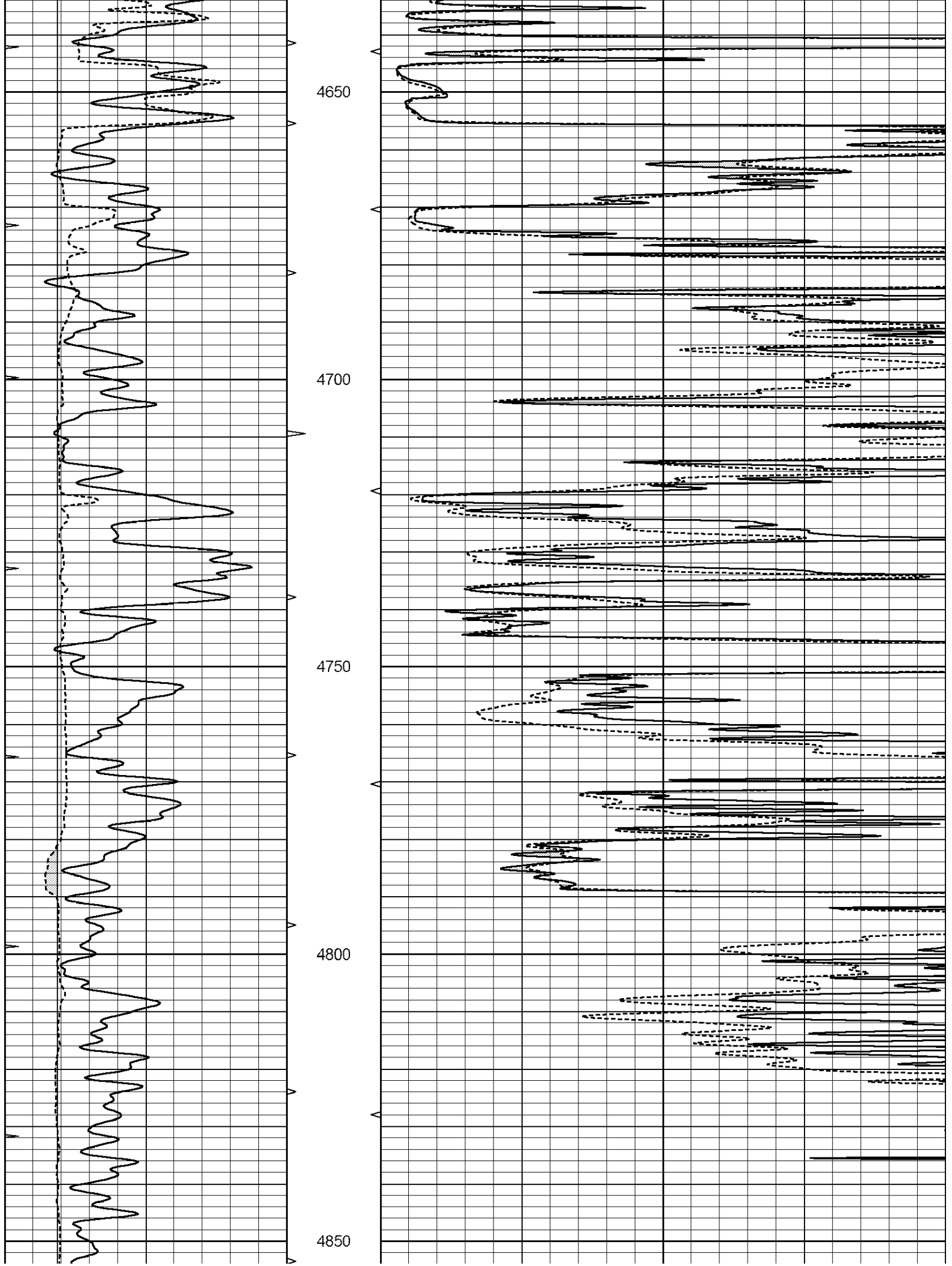
0	GAMMA RAY (GAPI)	150	ABHV	0	MEL1.5 (Ohm-m)	20
6	CALIPER (in)	16	10 (ft3)	0	MEL2.0 (Ohm-m)	20
0	MINMK	20	TBHV			
			0 (ft3)	10		

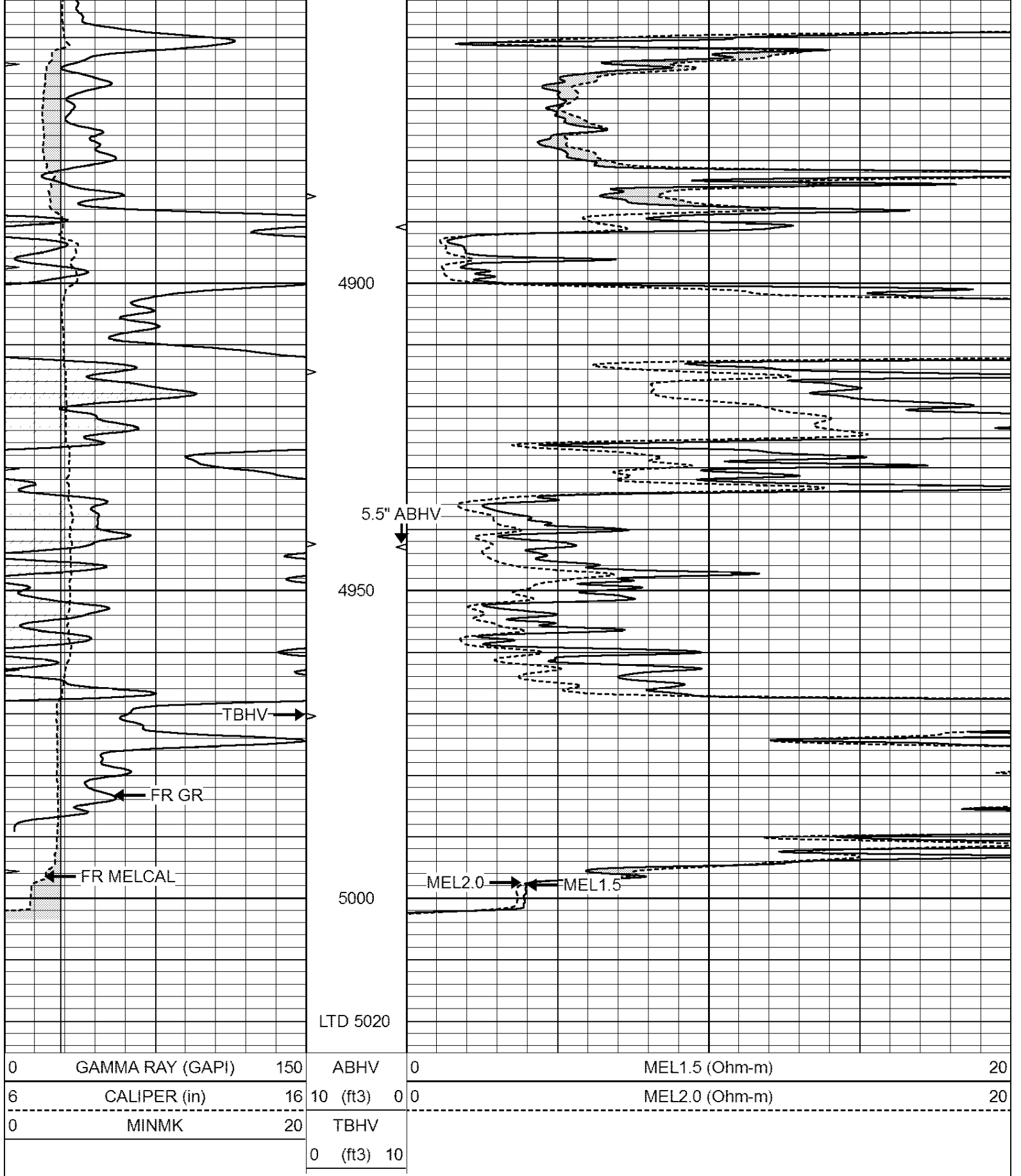












SUPERIOR
Hays,
Kansas

REPEAT SECTION

Database File: 006964pe.dj
 Dataset Pathname: pass5.5
 Presentation Format: micro
 Dataset Creation: Wed Jun 01 16:07:56 2011 by Calc Open-Cased 110302
 Charted by: Depth in Feet scaled 1:240

0	GAMMA RAY (GAPI)	150	ABHV	0	MEL1.5 (Ohm-m)	20
6	CALIPER (in)	16	10 (ft3)	0	MEL2.0 (Ohm-m)	20
0	MINMK	20	TBHV			
			0 (ft3)	10		

