



**Borehole Compensated  
Sonic Log**

**DIGITAL LOG (785) 625-3858**

API No. 15-065-23,658-00-00	Company <b>H &amp; C Oil Operating, Inc.</b>	Location <b>1650' FSL &amp; 1650' FWL</b>	Other Services CNL/CDL MEL/DIL
Well <b>Paintin No. 10-1</b>	County <b>Graham</b>		
Field <b>Wildcat</b>	State <b>Kansas</b>		
Log Measured From Kelly Bushing	Sec: <b>10</b>	Twp: <b>9 S</b>	Rge: <b>25 W</b>
Drilling Measured From Kelly Bushing			Elevation K.B. 2550 D.F. G.L. 2545

Permanent Datum	Ground Level	Elevation 2545
Log Measured From	Kelly Bushing	5 Ft. Above Perm. Datum
Drilling Measured From	Kelly Bushing	
Date	8/12/2010	
Run Number	Two	
Type Log	BHC Sonic	
Depth Driller	4110	
Depth Logger	4113	
Bottom Logged Interval	4102	
Top Logged Interval	250	
Type Fluid In Hole	Chemical	
Salinity, PPM CL	2,200	
Density	9.3	
Level	Full	
Max. Rec. Temp. F	119	
Operating Rig Time	5 Hours	
Equipment -- Location	4 Hays	
Recorded By	K. Bange	
Witnessed By	Clayton Erickson	

Borehole Record				Casing Record			
Run No	Bit	From	To	Size	Wgt.	From	To
One	12.25	00	263	8.625	23#	00	263
Two	7.875	263	TD				

<<< Fold Here >>>

All interpretations are opinions based on inferences from electrical or other measurements and we cannot and do not guarantee the accuracy or correctness of any interpretation, and we shall not, except in the case of gross or willful negligence on our part, be liable or responsible for any loss, costs, damages, or expenses incurred or sustained by anyone resulting from any interpretation made by any of our officers, agents or employees. These interpretations are also subject to our general terms and conditions set out in our current Price Schedule.

**Comments**

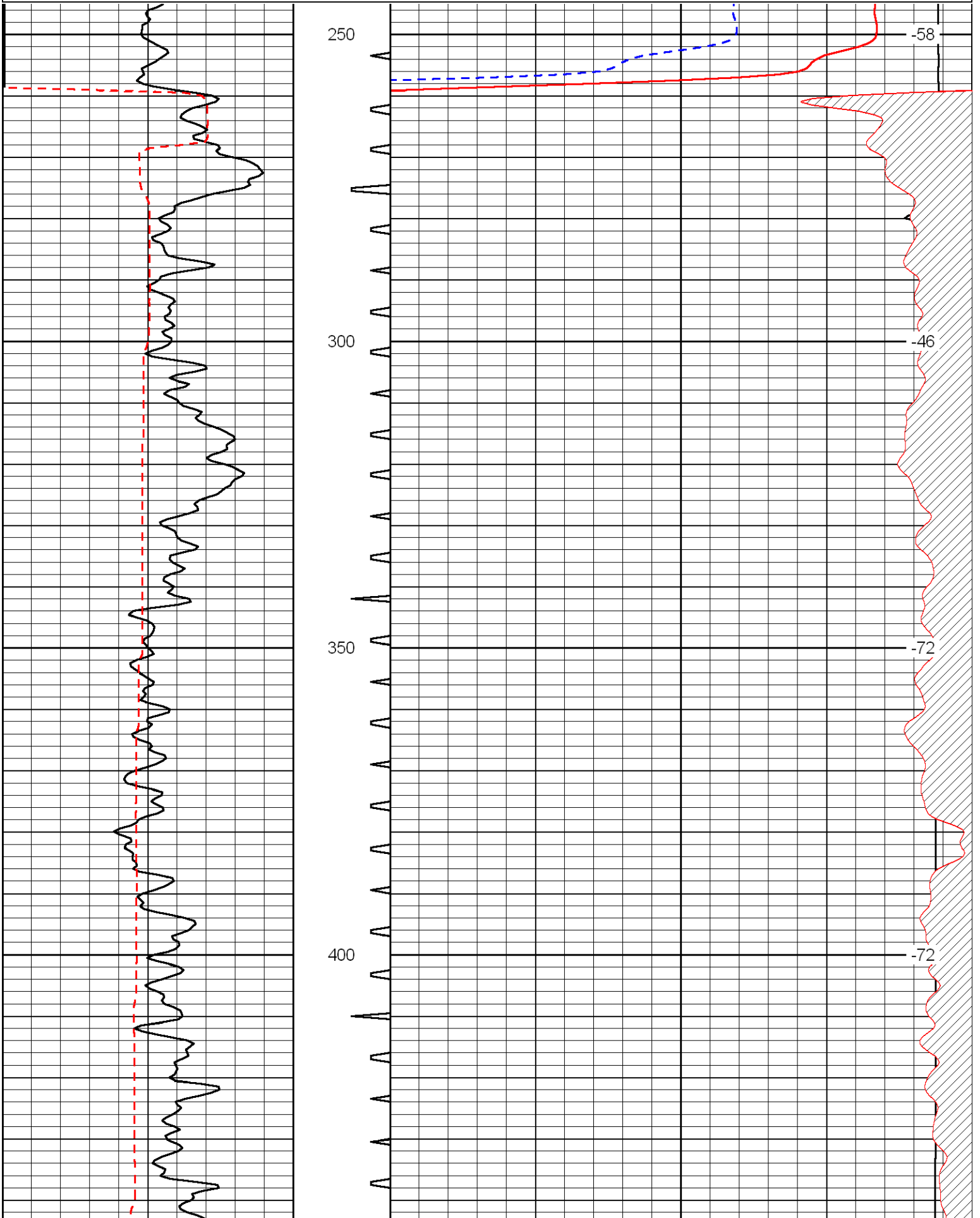
Thank you for using Log-Tech, Inc.  
(785) 625-3858

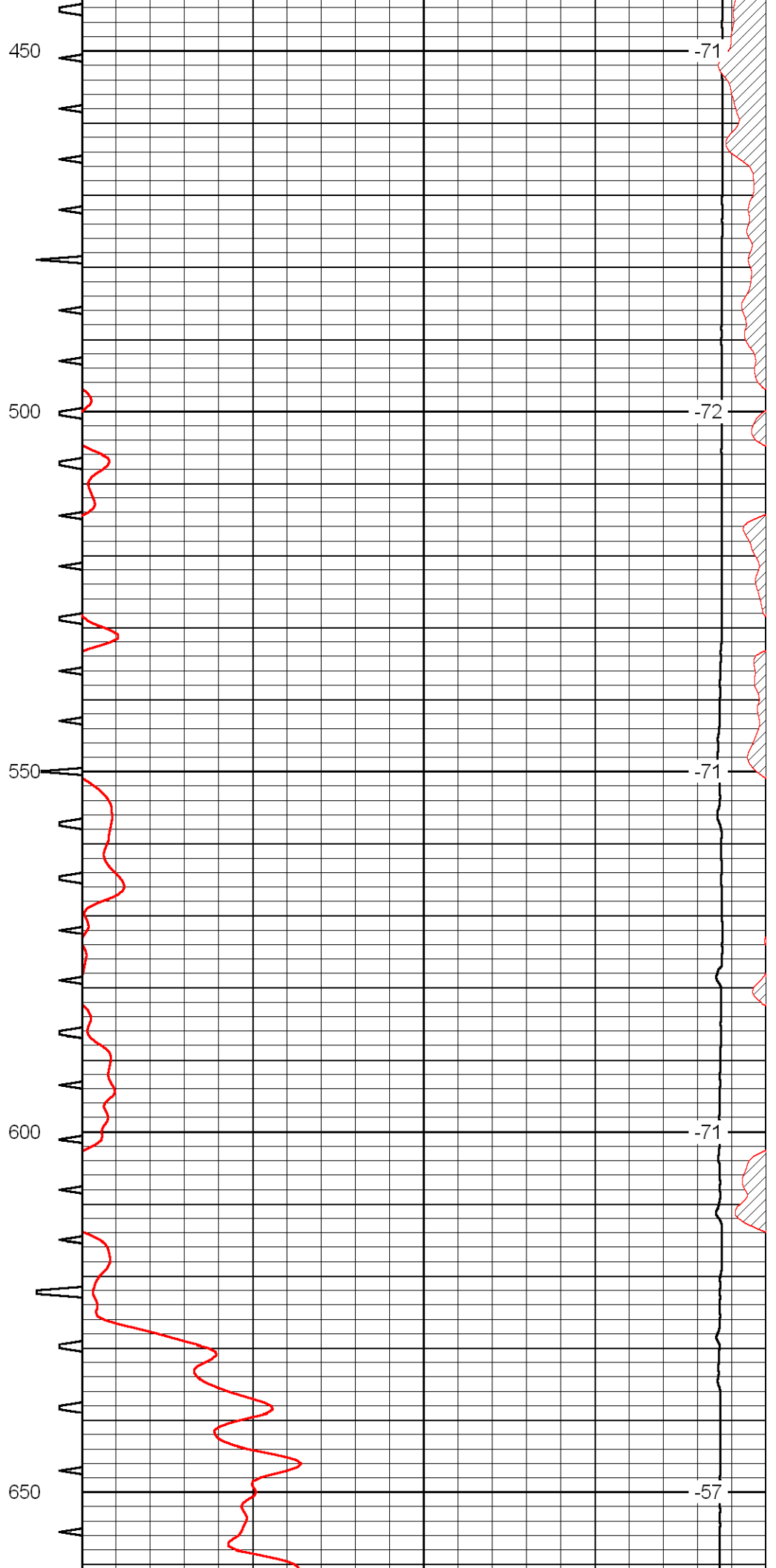
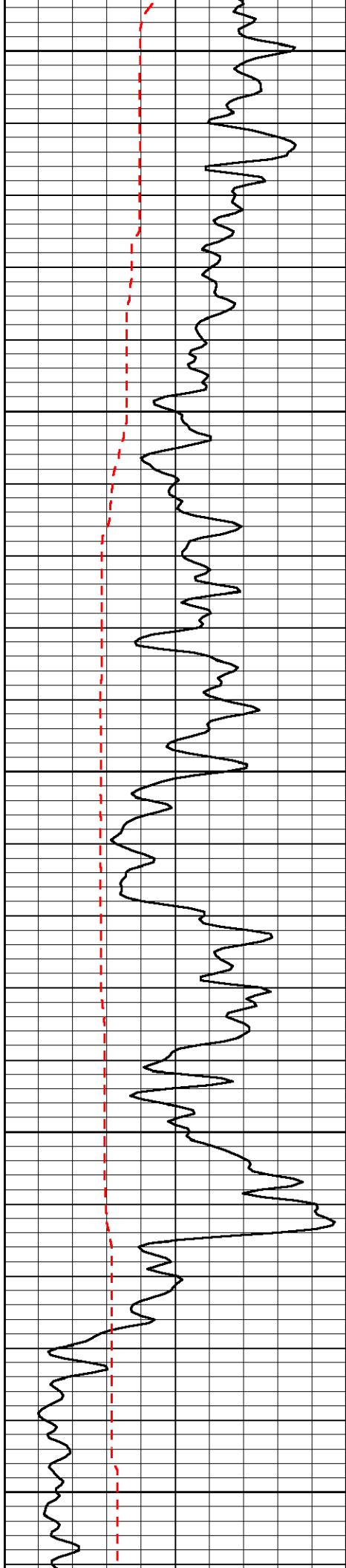
St. Peter, N to K rd, 1/2 W, N into (follow lease rd)

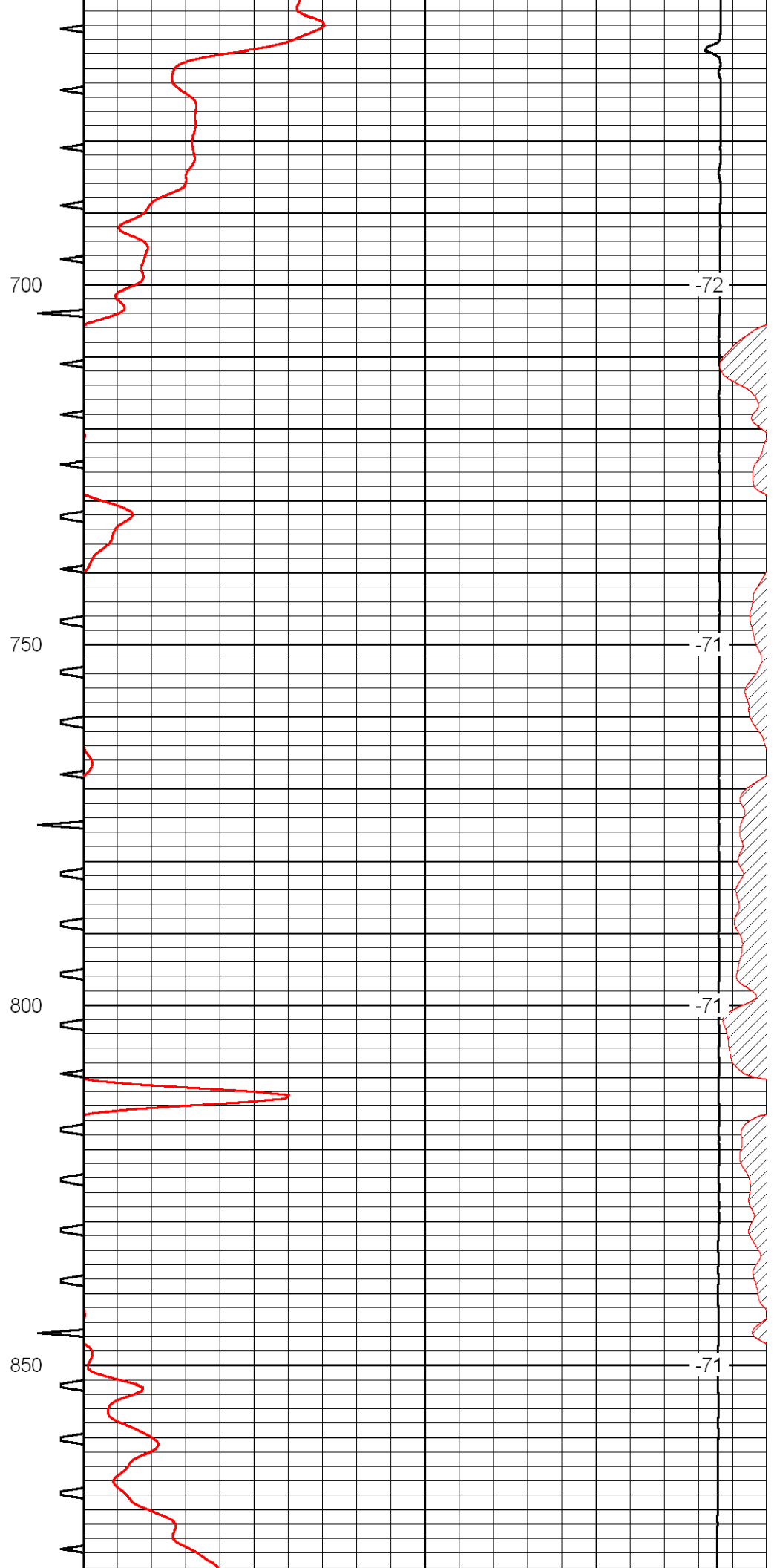
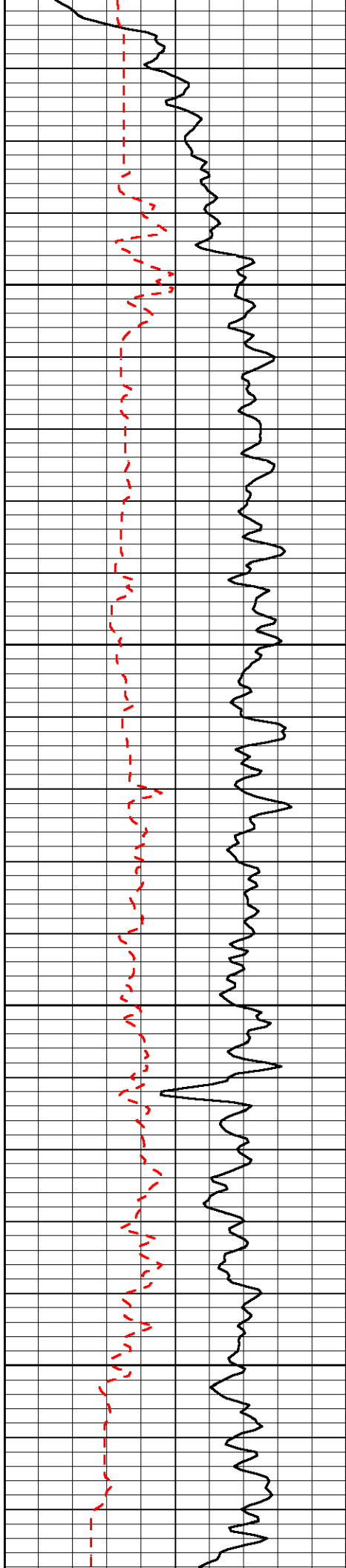
Database File: h\_c081210hd.db  
 Dataset Pathname: dil/h&cstack  
 Presentation Format: sonic  
 Dataset Creation: Thu Aug 12 11:19:31 2010  
 Charted by: Depth in Feet scaled 1:240

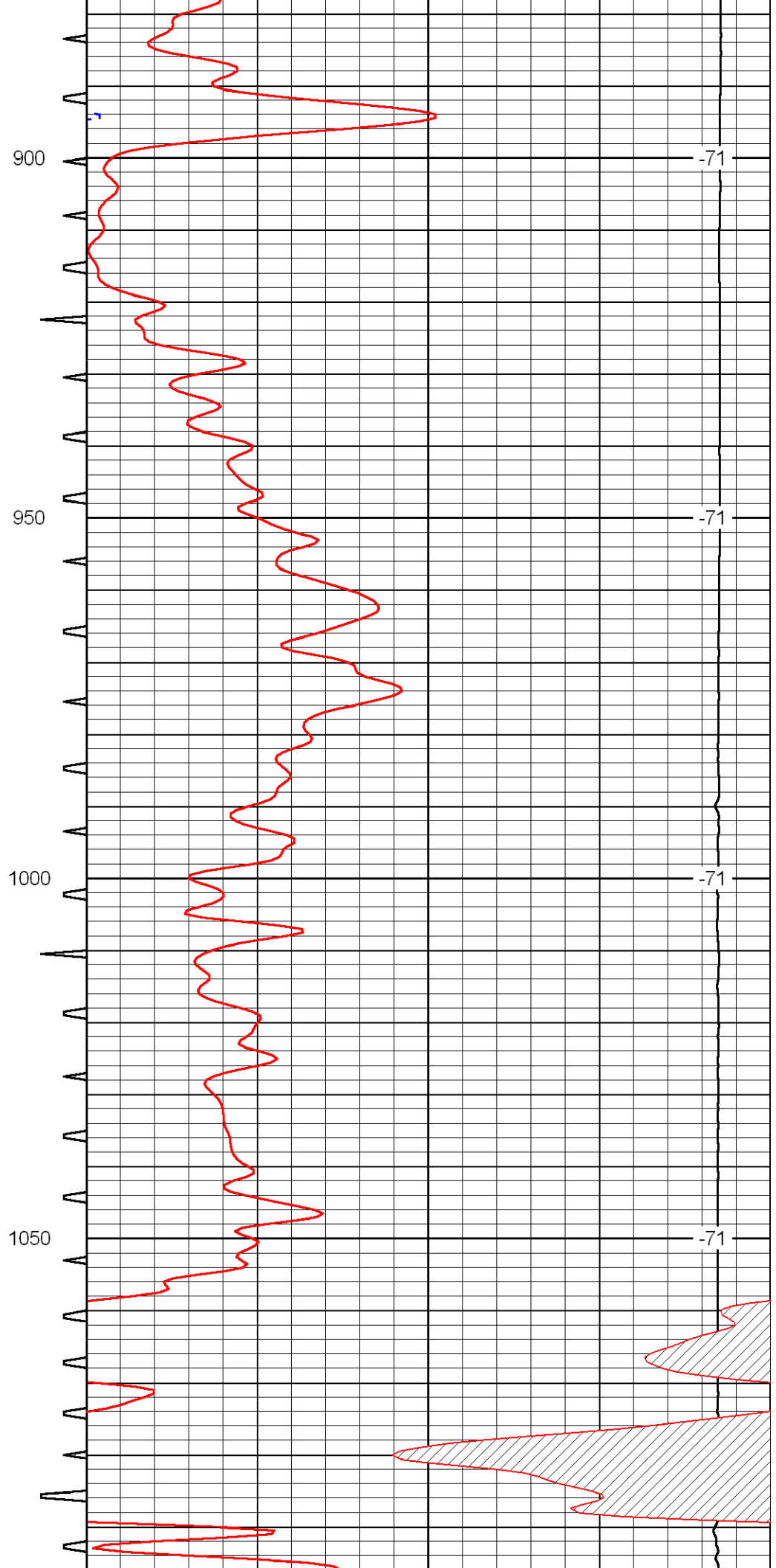
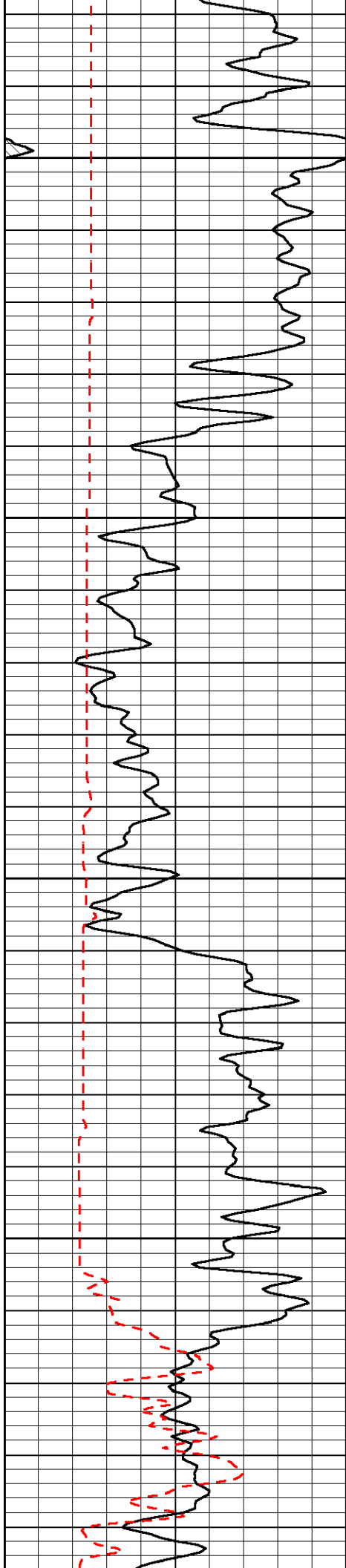
0	Gamma Ray	150	Sonic Int	140	Delta Time (usec/ft)	40
150	Gamma Ray	300	5	0	Sonic Porosity	-10
6	dCAL (GAPI)	16		15000	LTEN (lb)	0

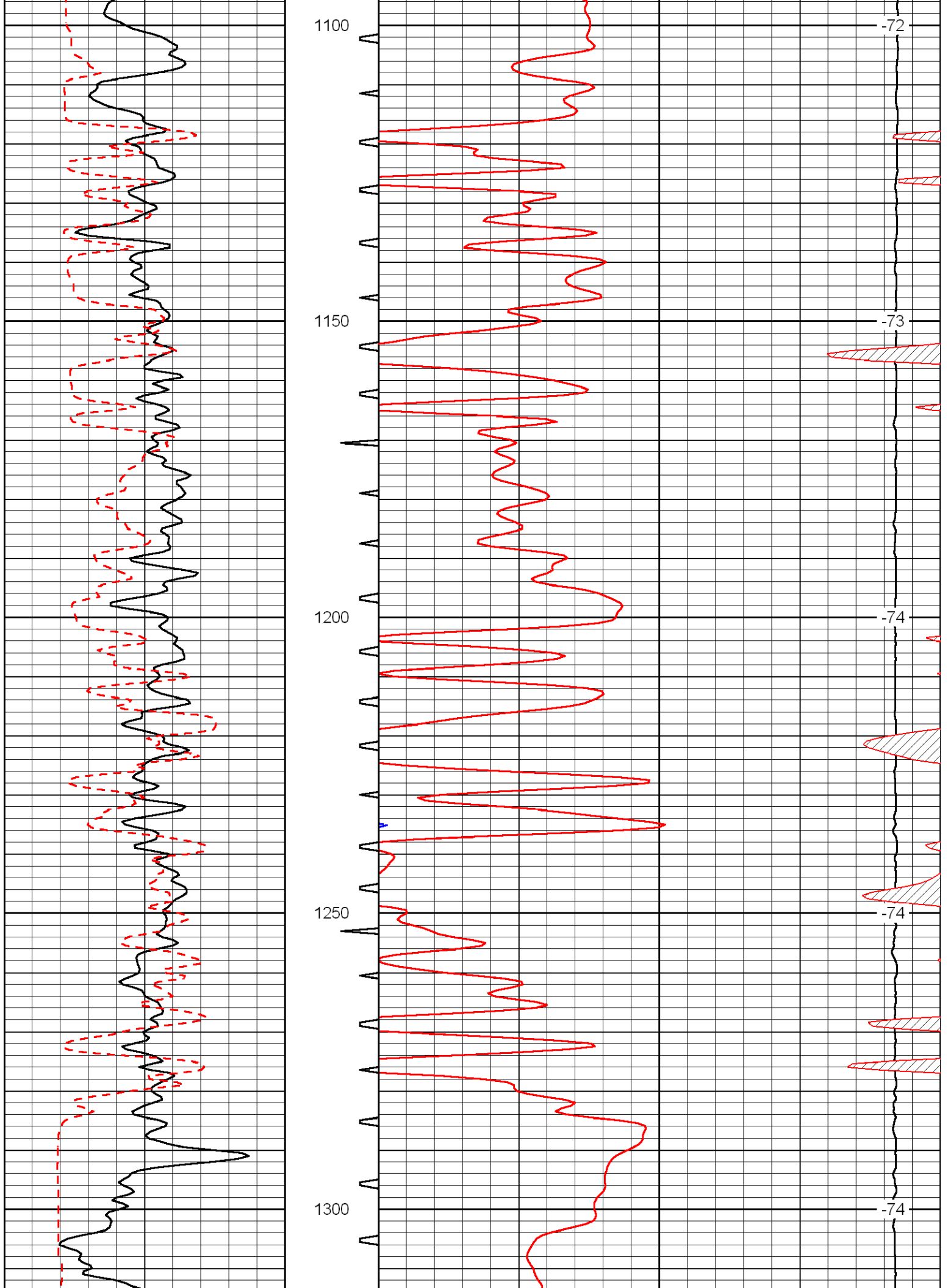
LSPD

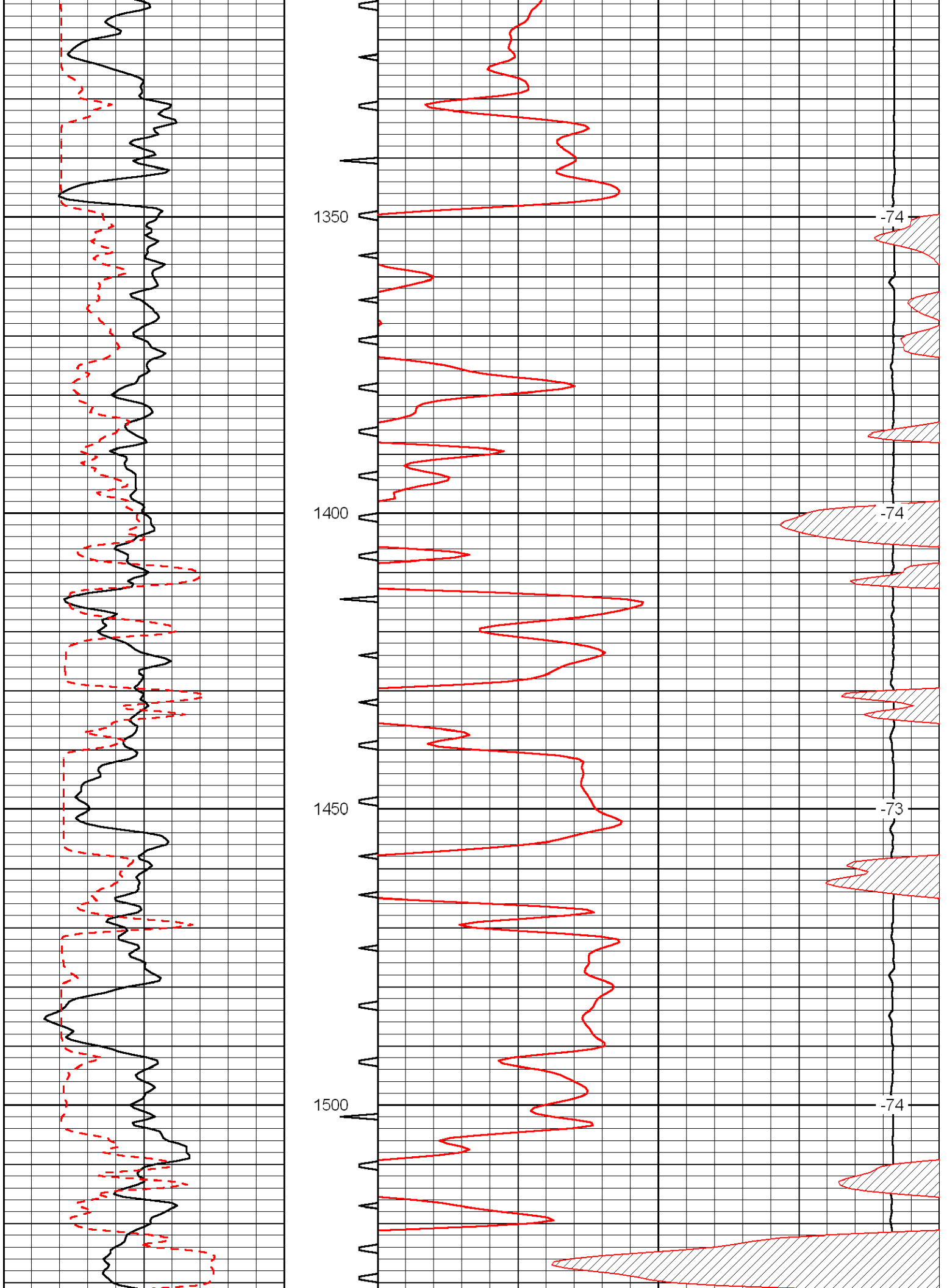


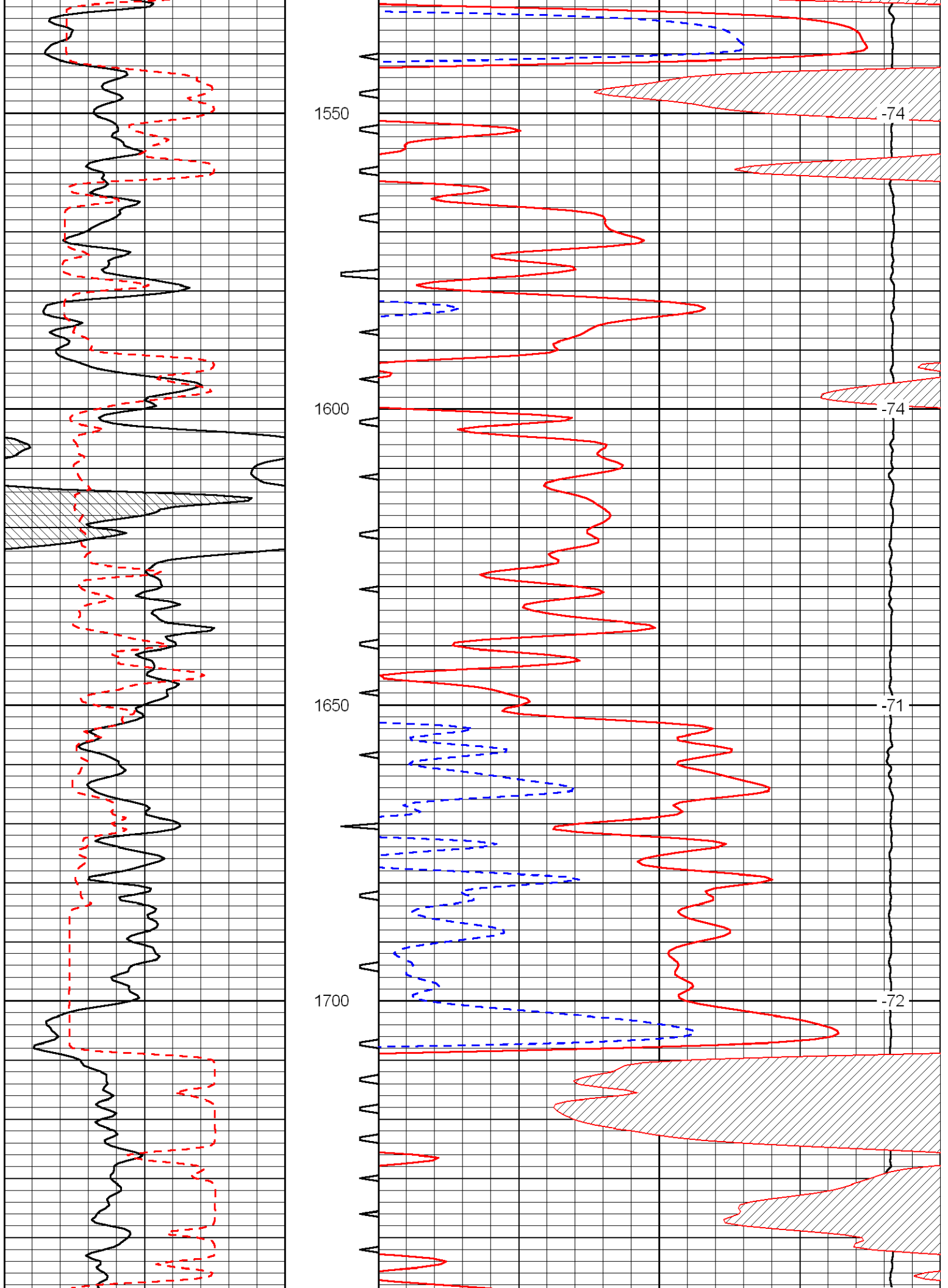


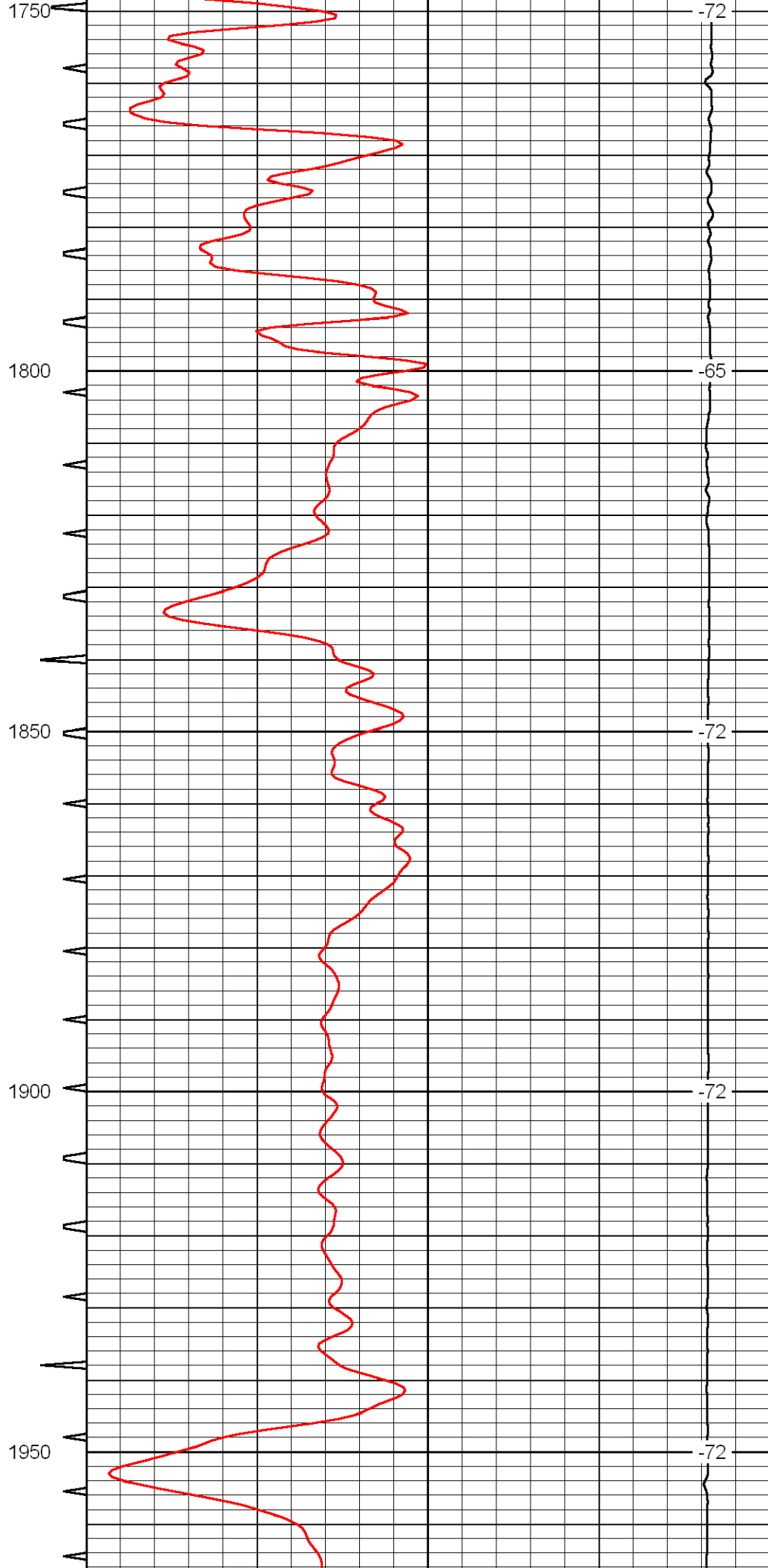
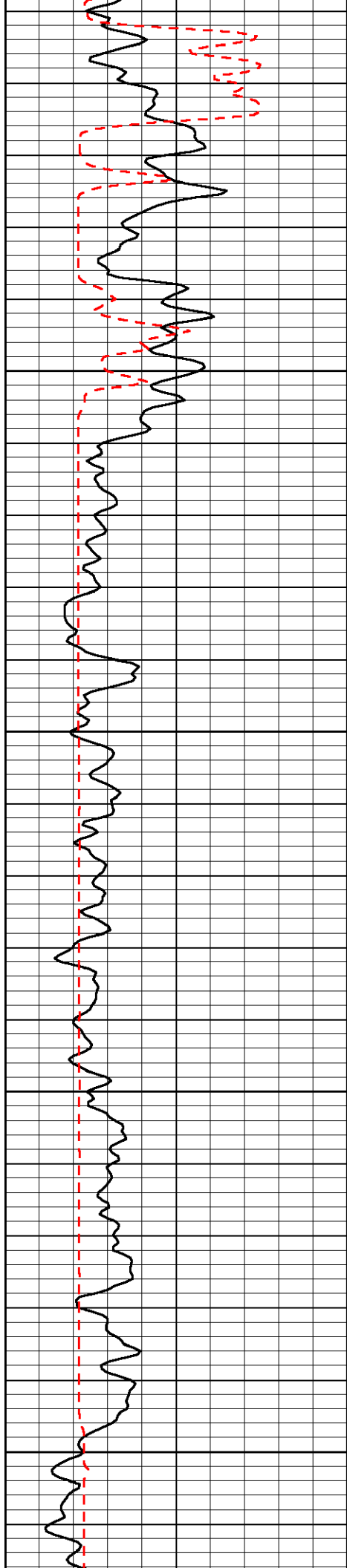


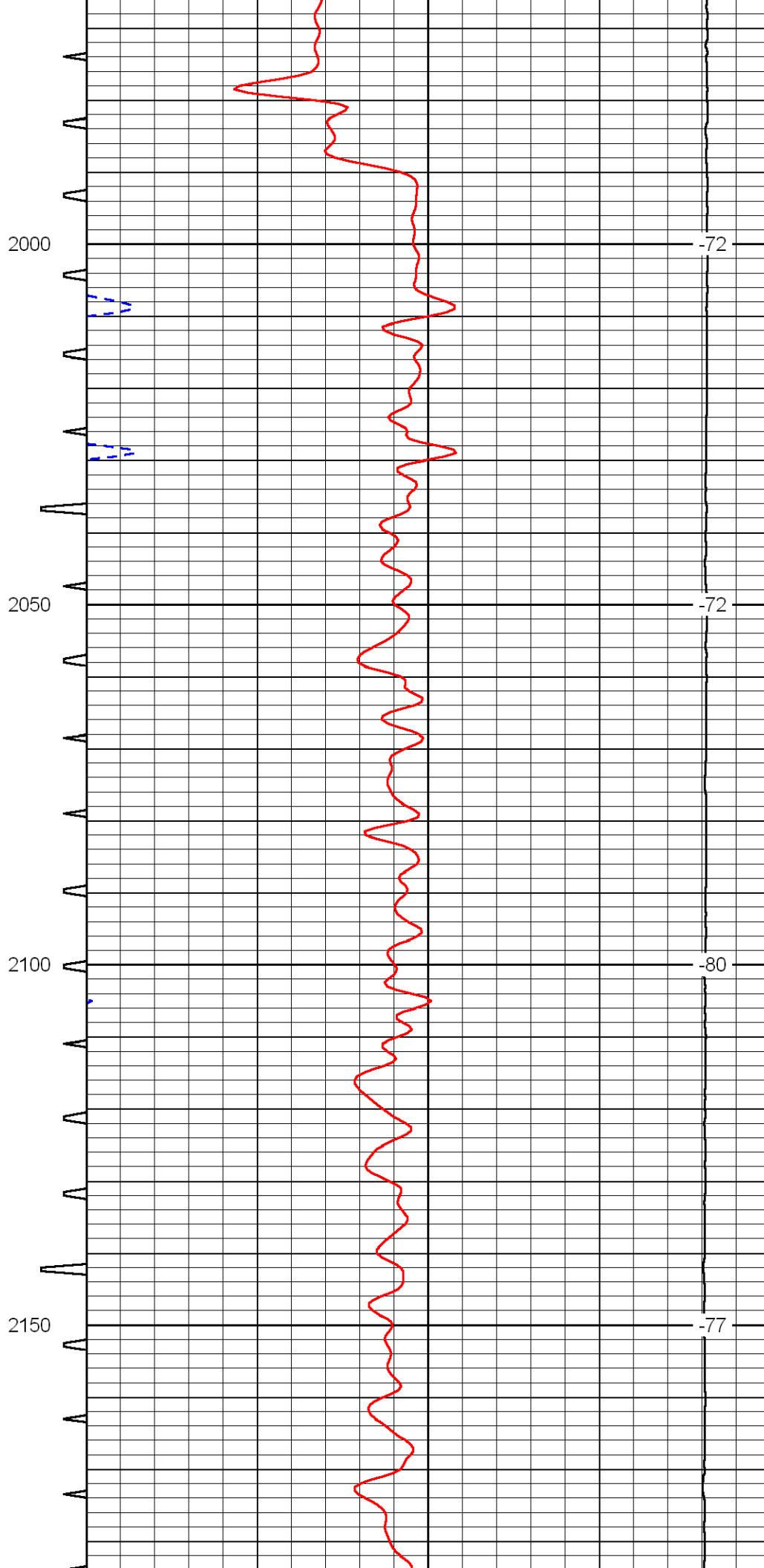
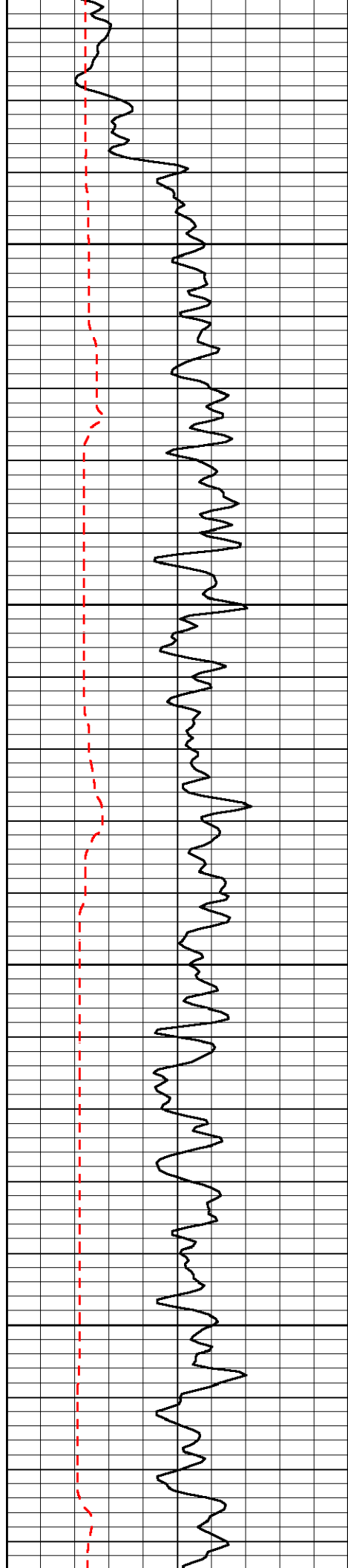


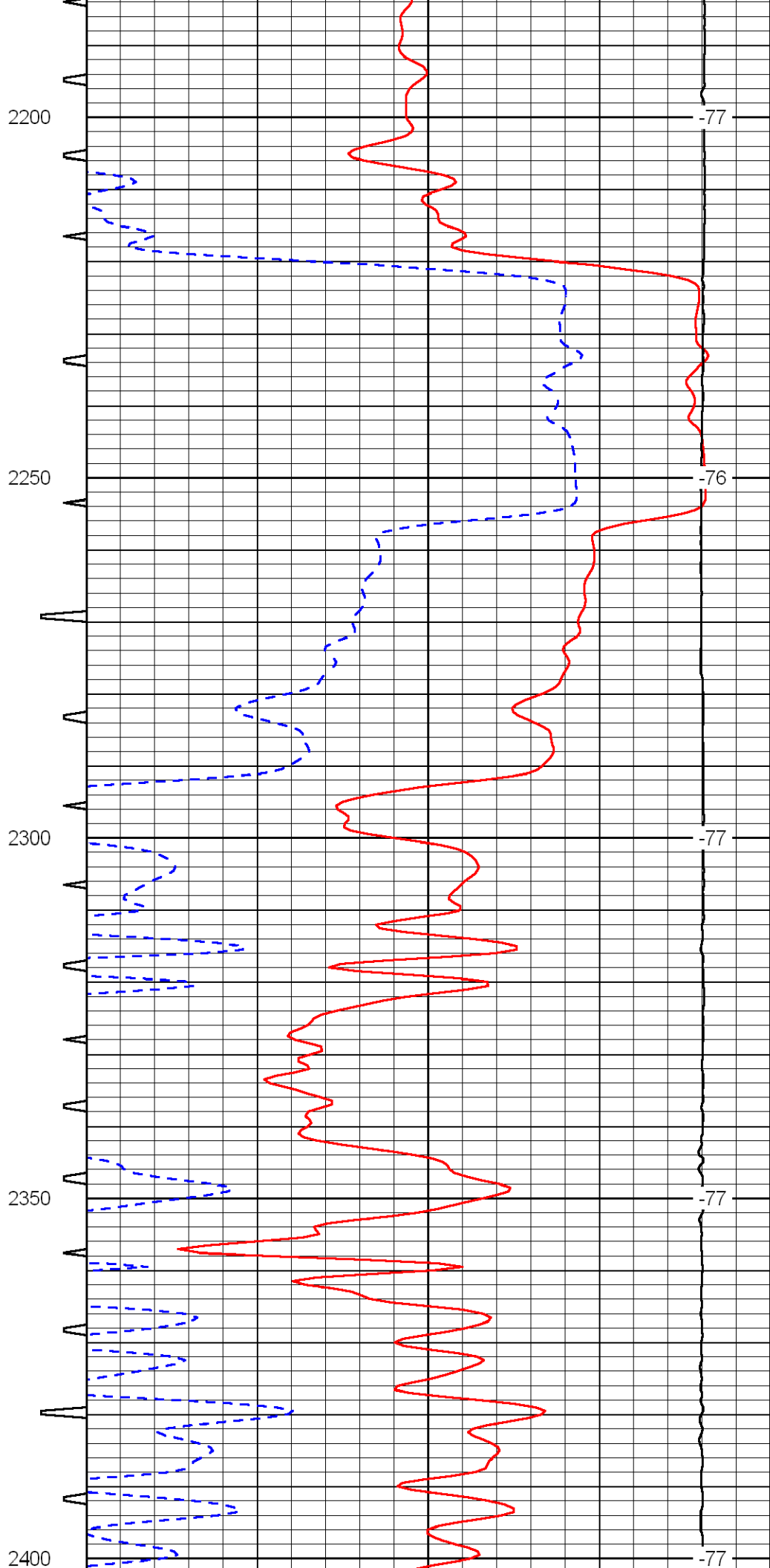
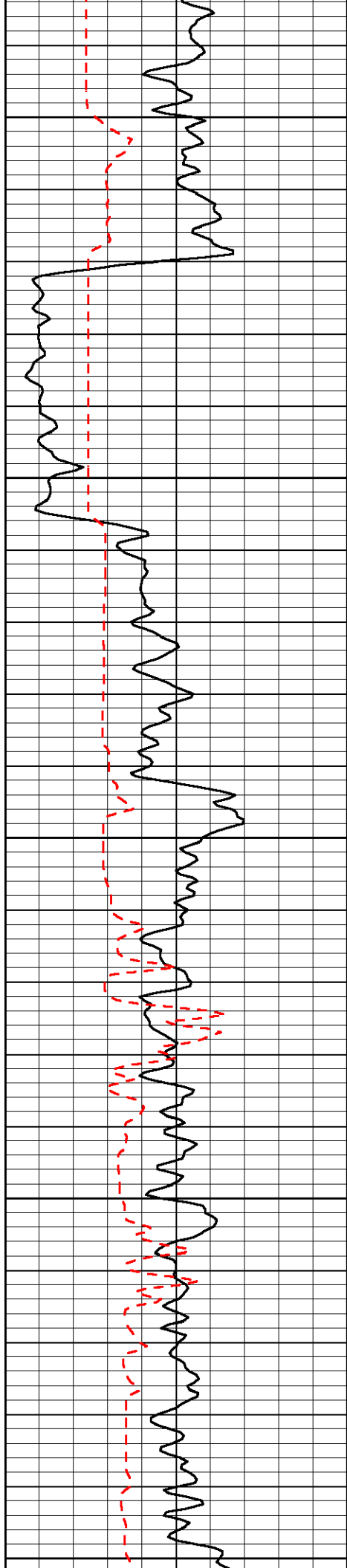


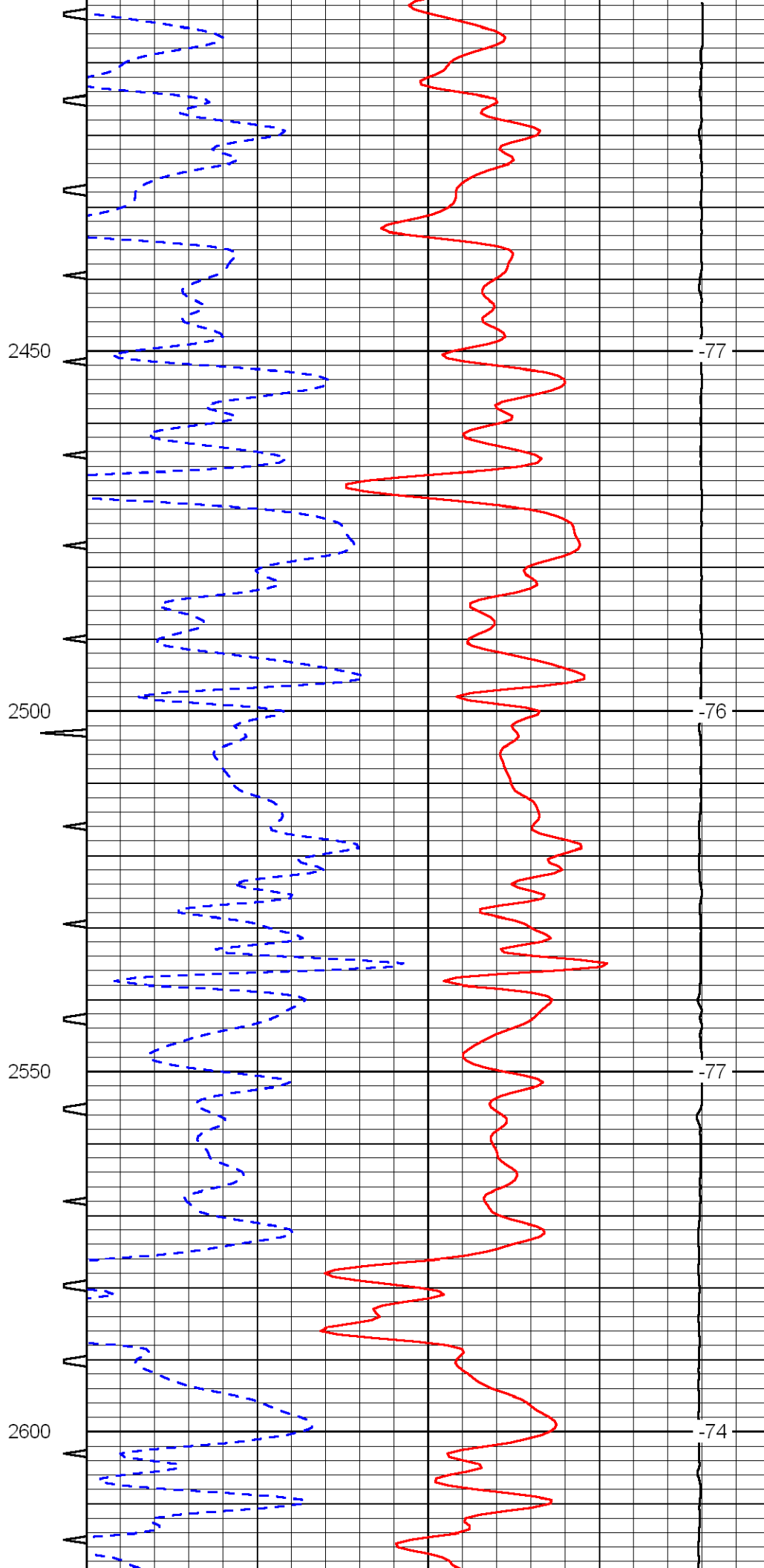
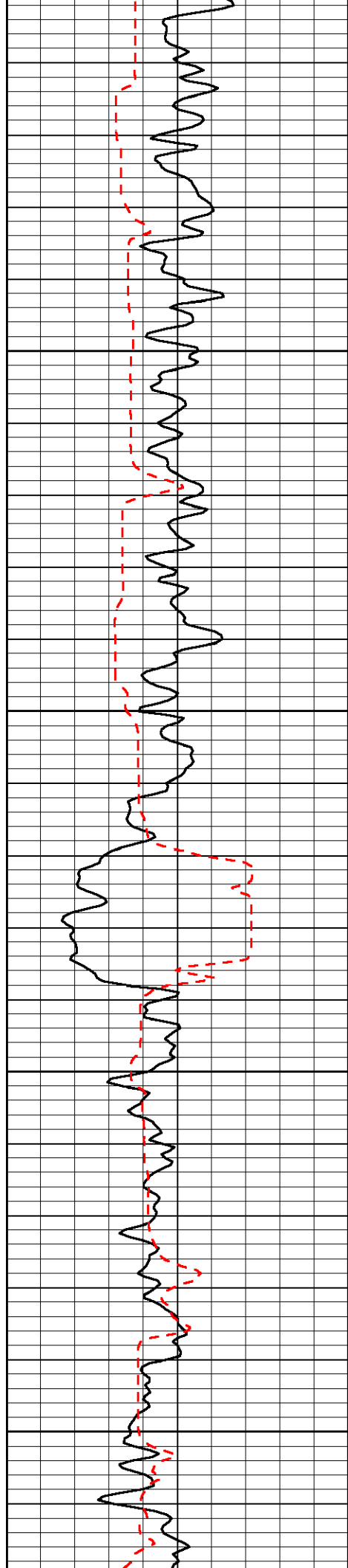


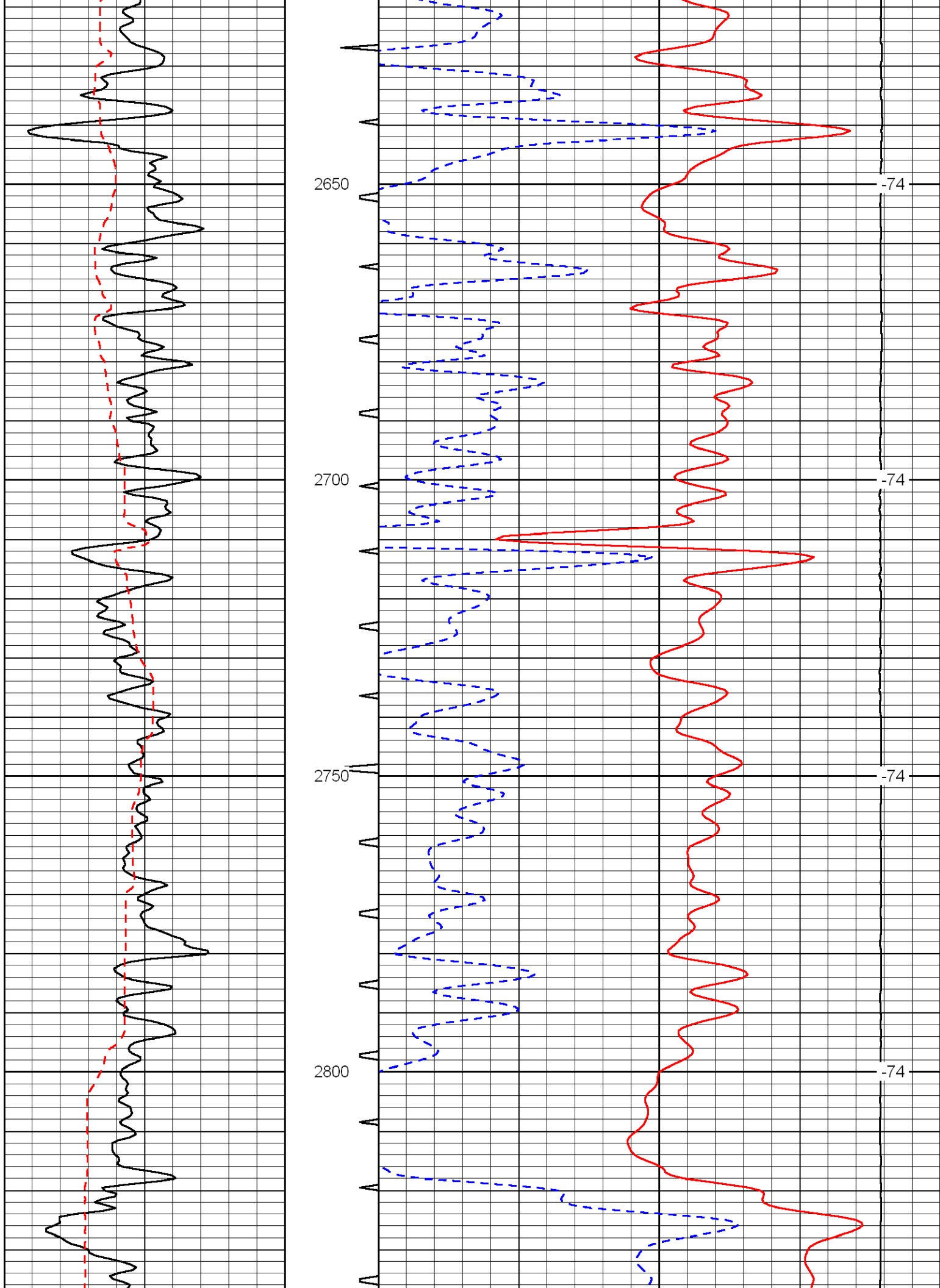


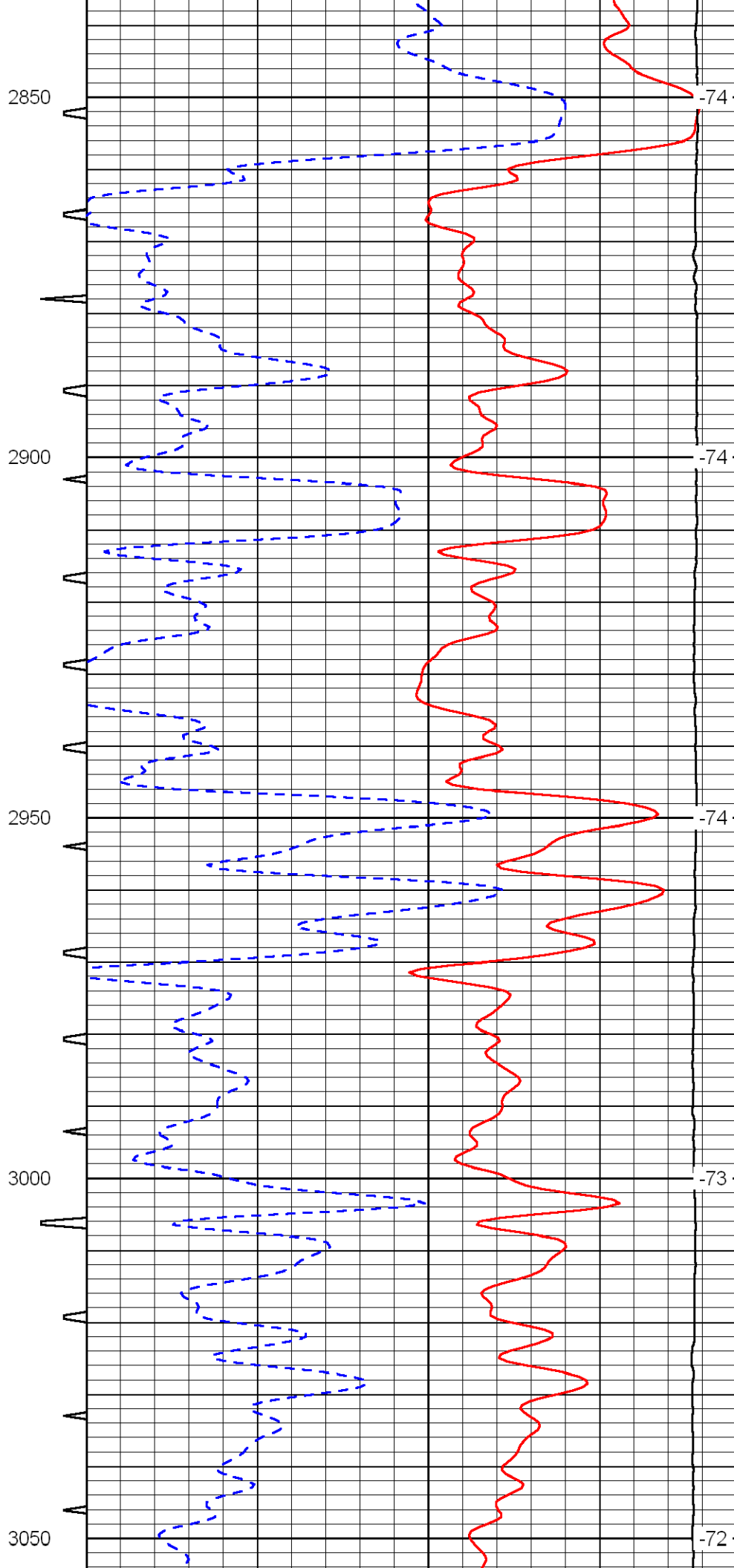
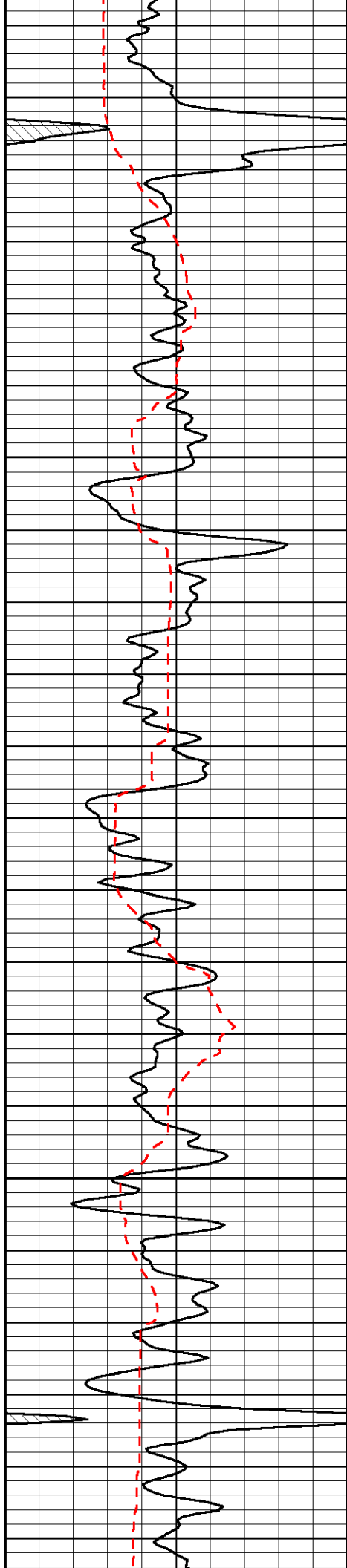


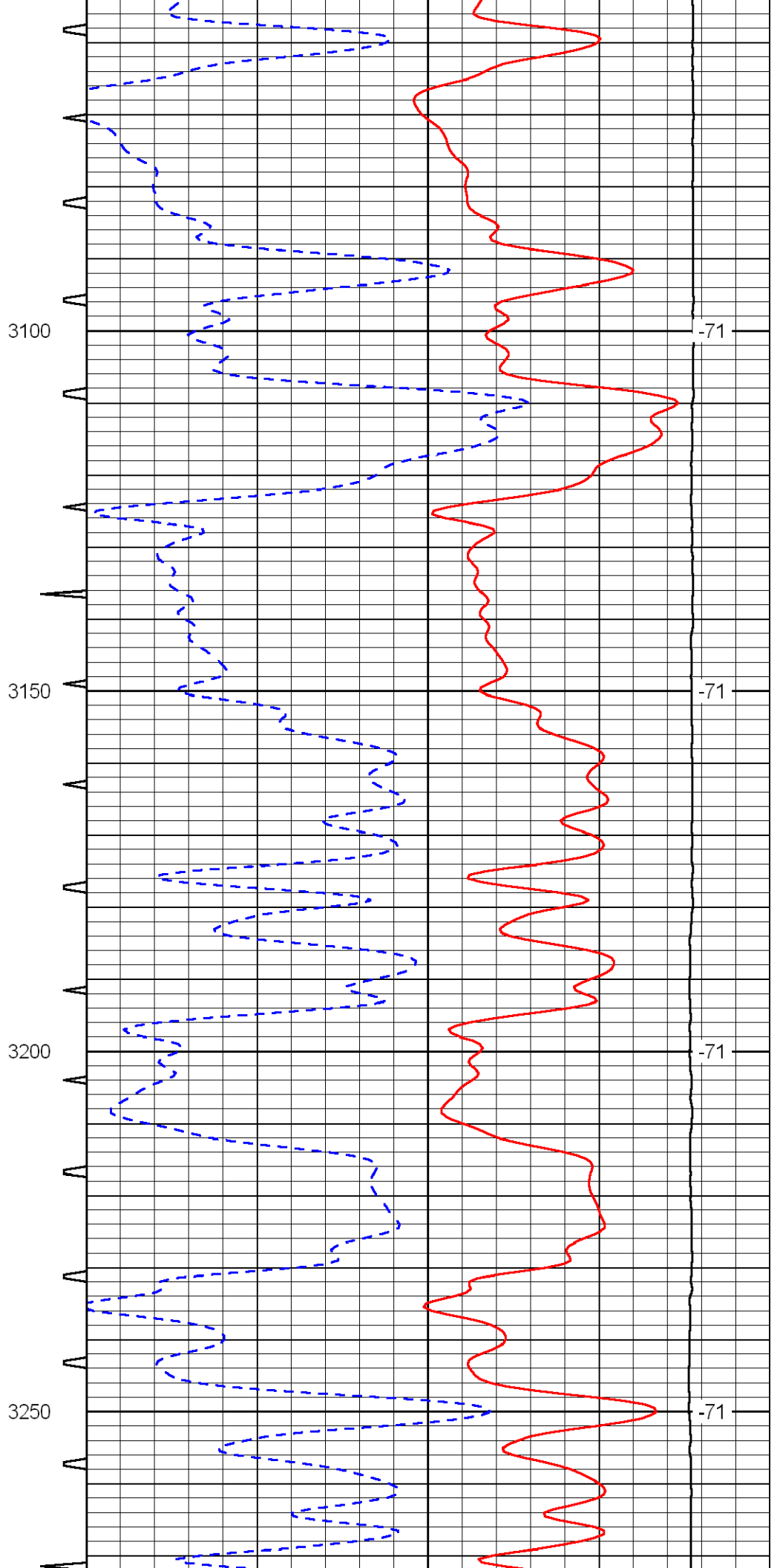
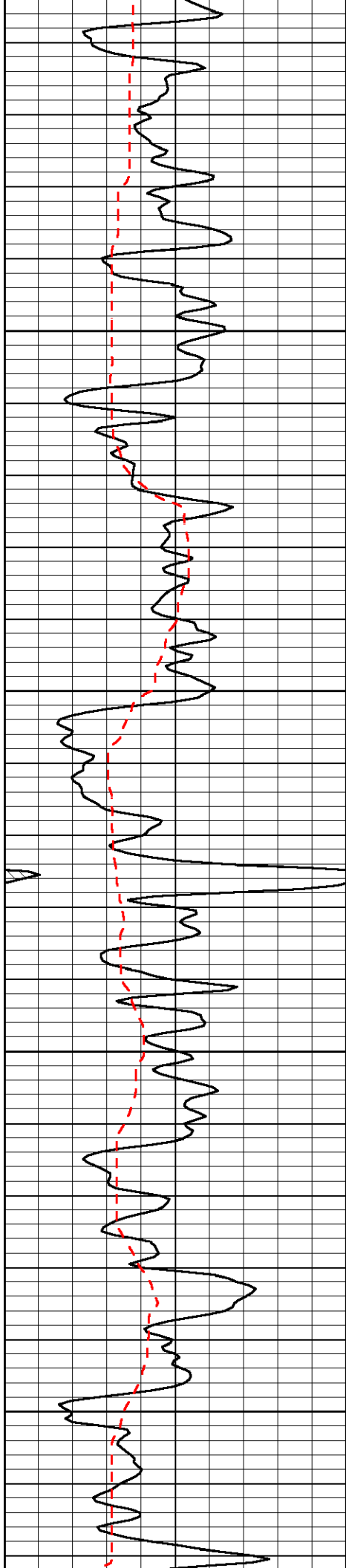


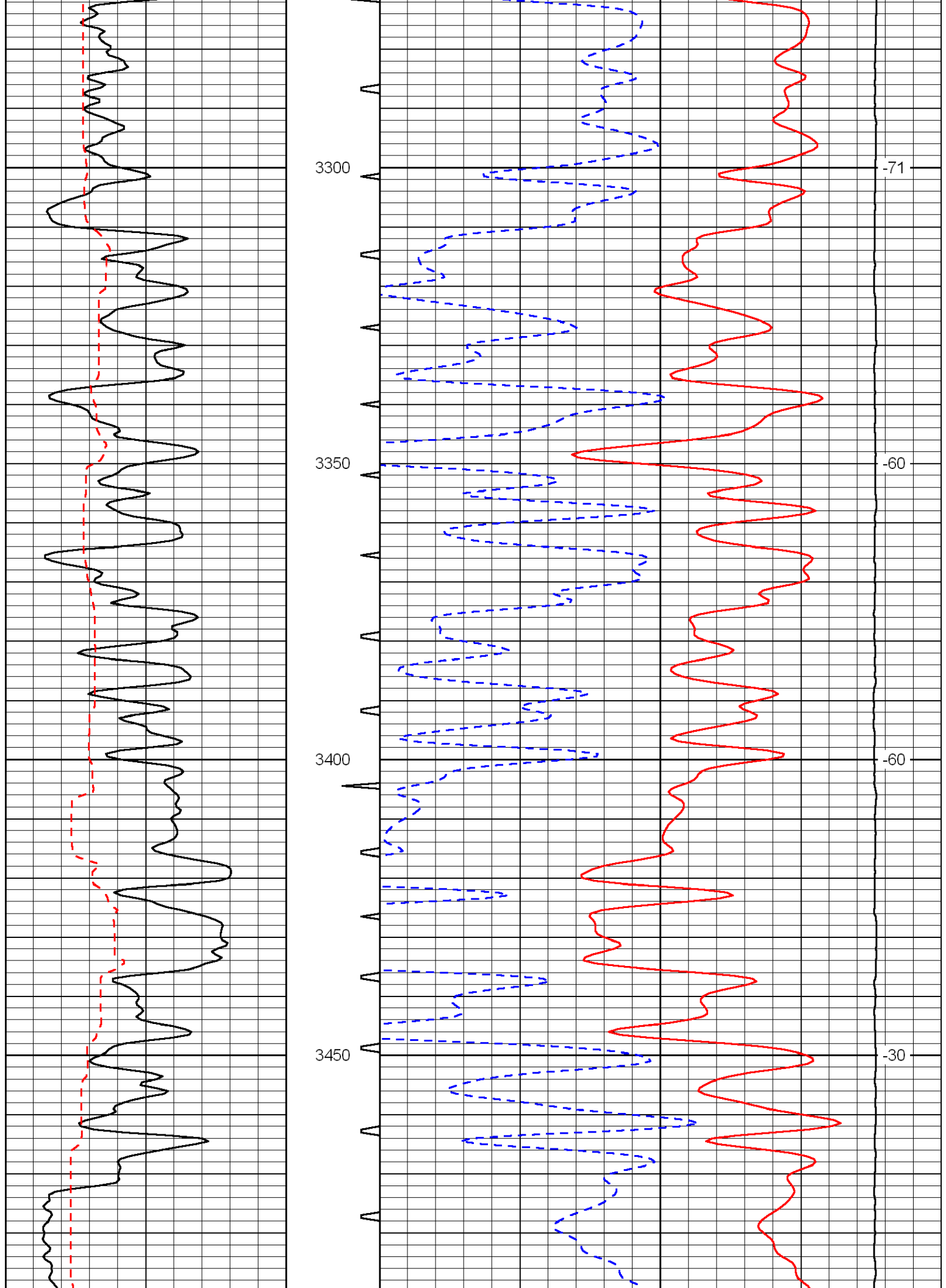


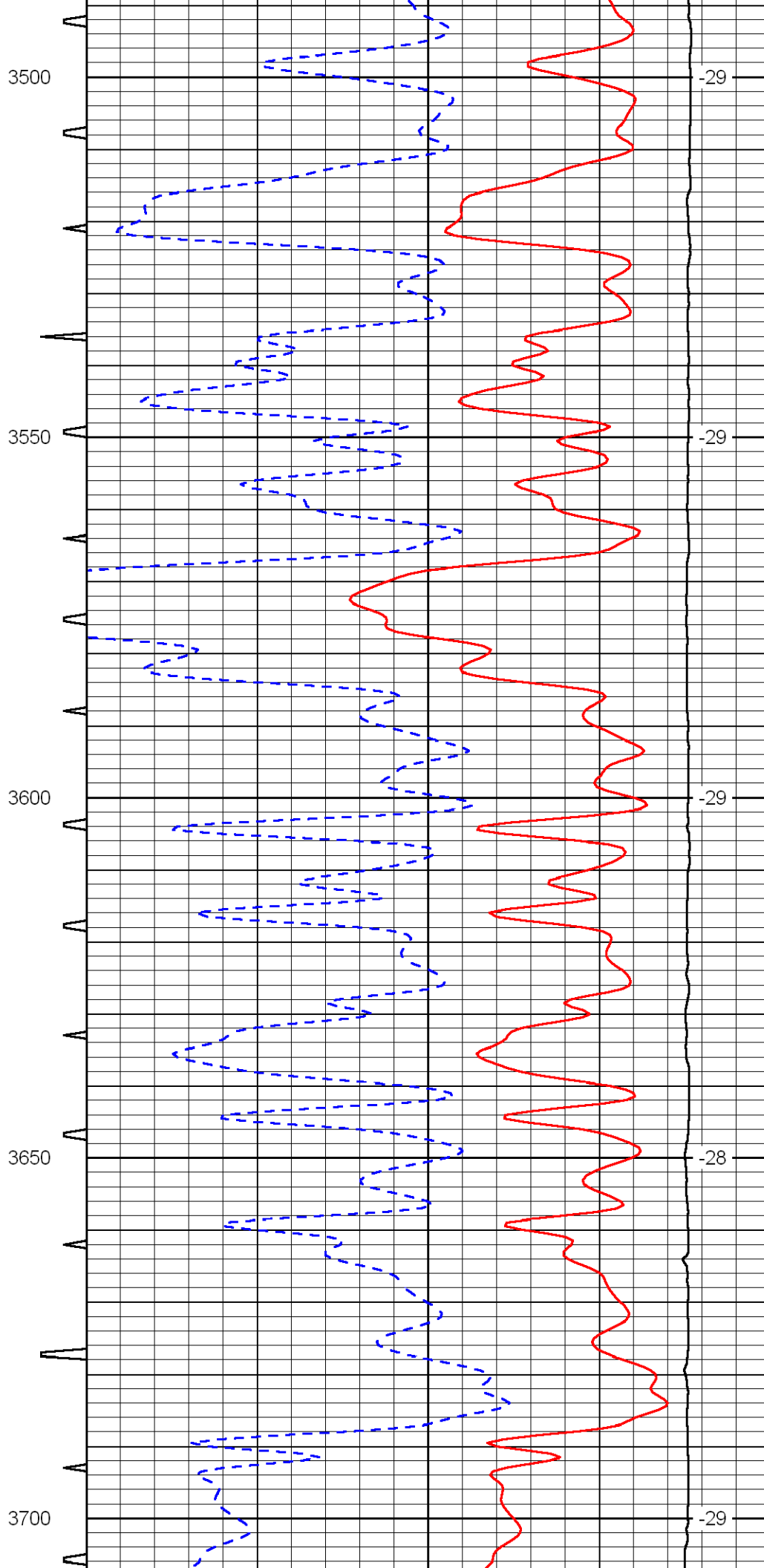
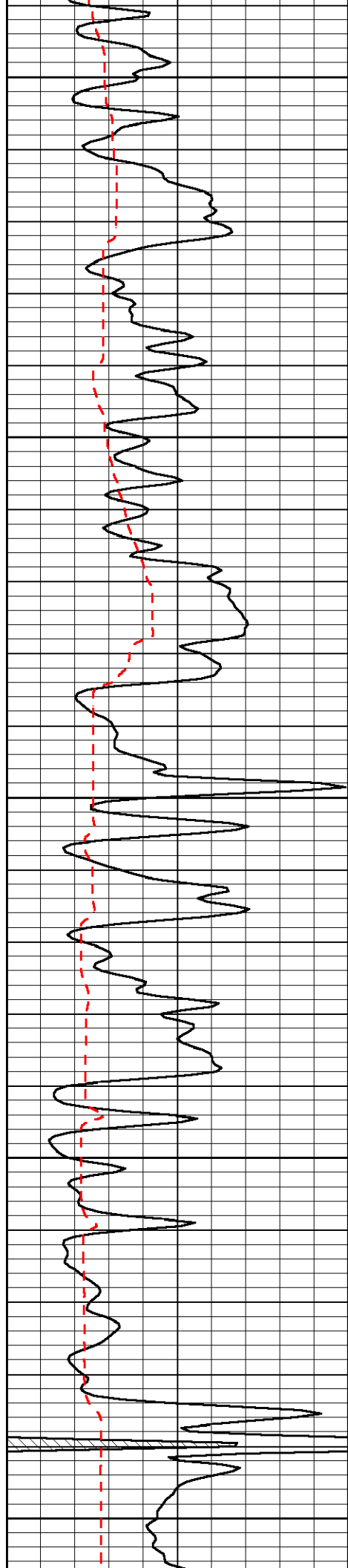


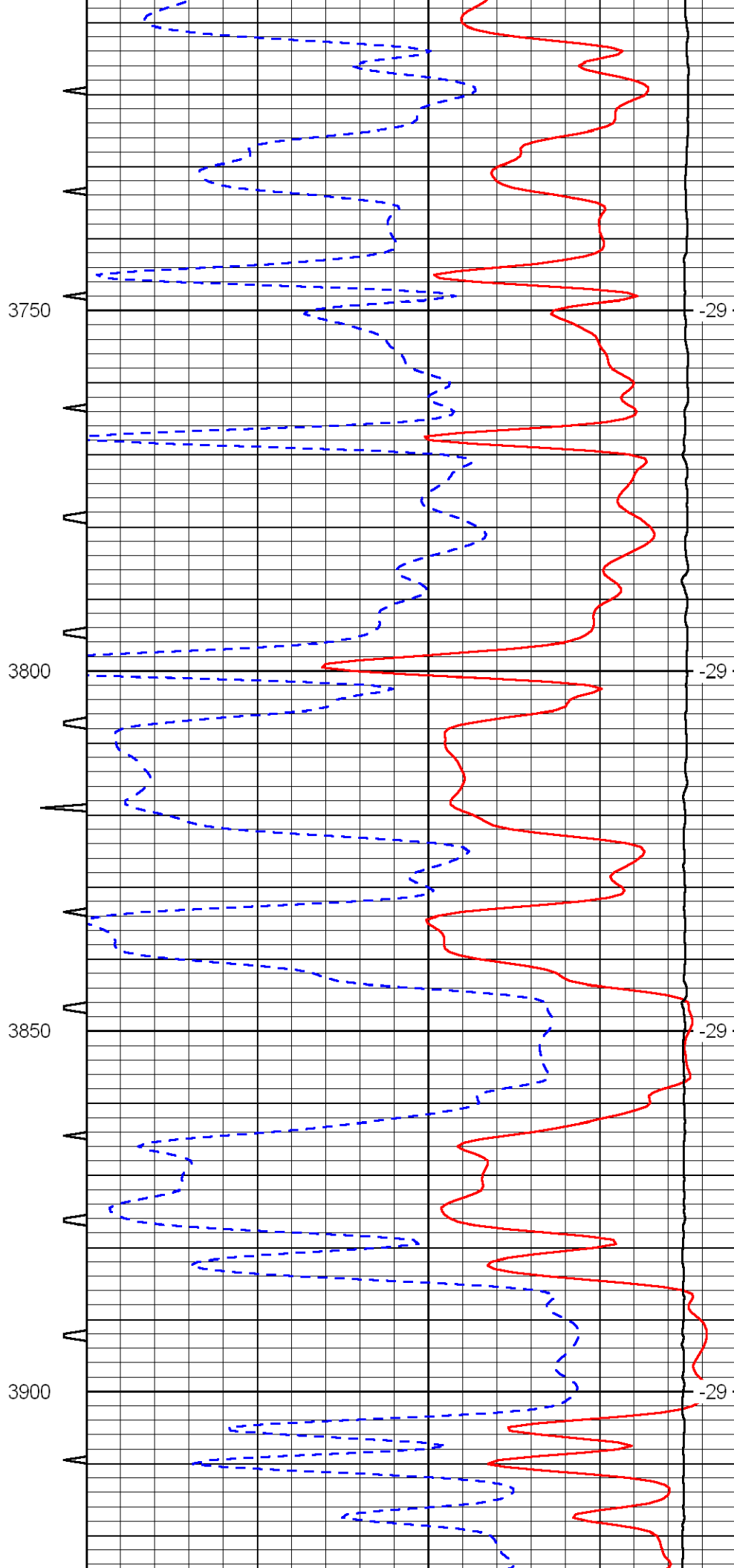
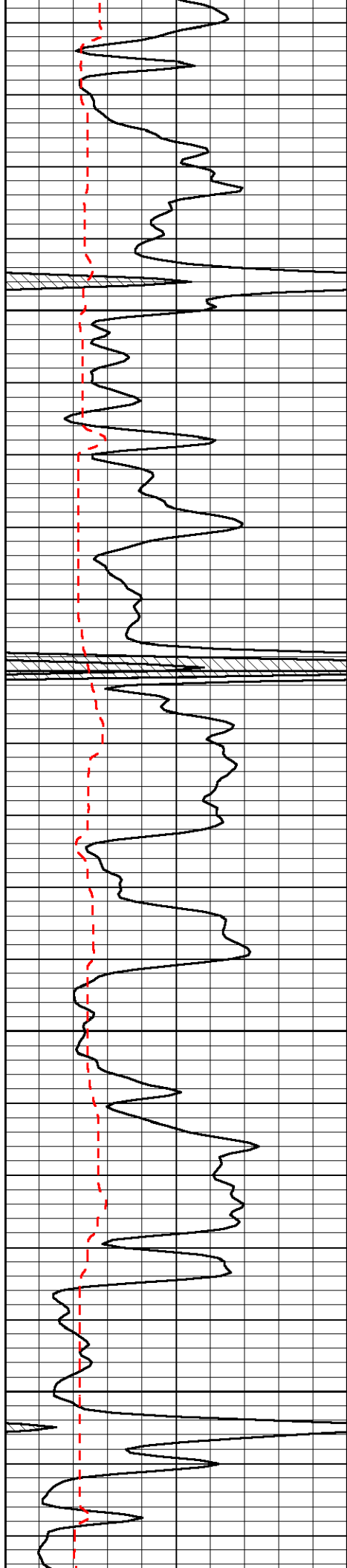


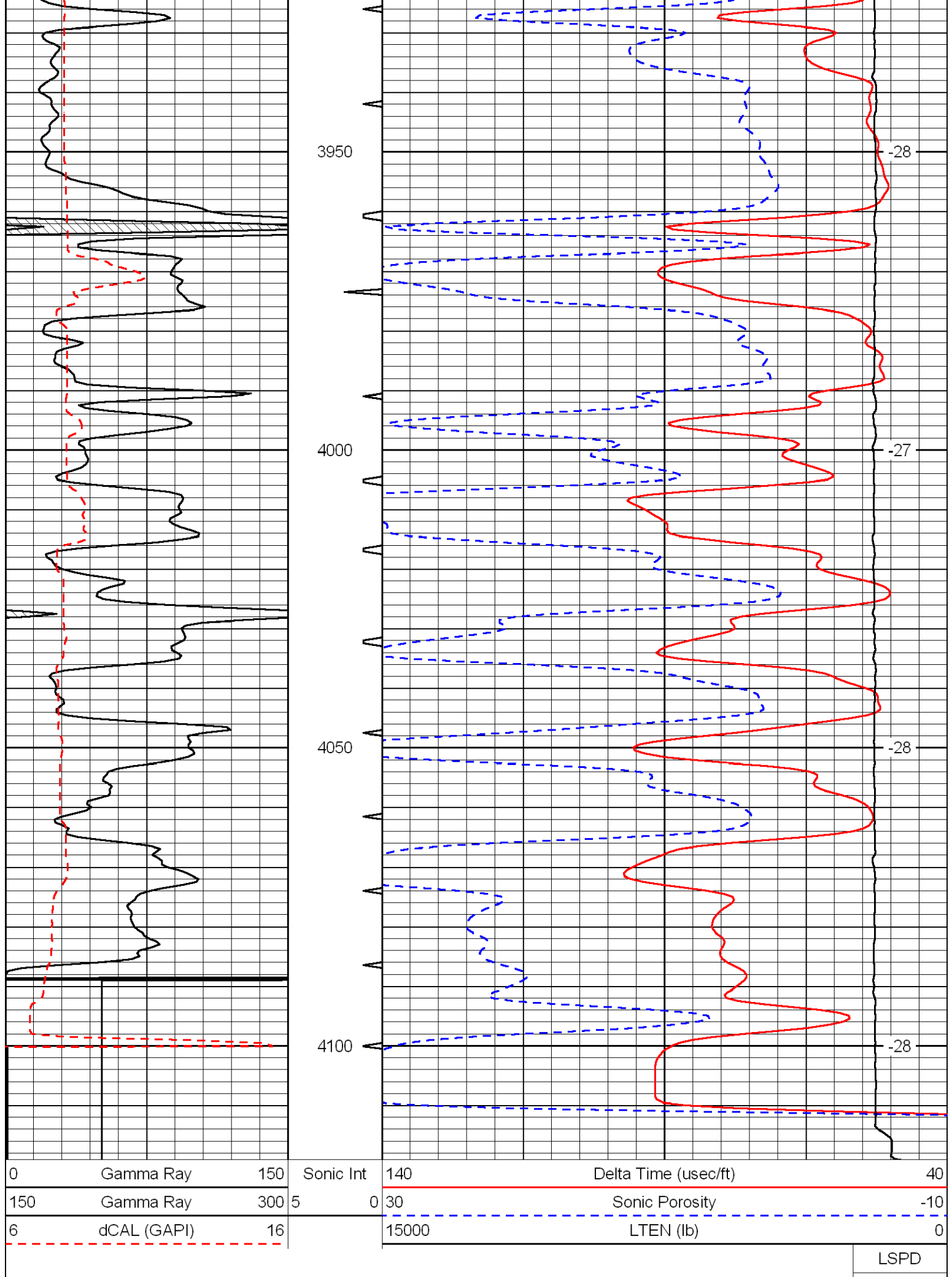












0	Gamma Ray	150	Sonic Int	140	Delta Time (usec/ft)	40
150	Gamma Ray	300	5	0	Sonic Porosity	-10
6	dCAL (GAPI)	16		15000	LTEN (lb)	0

LSPD