



Microresistivity Log

DIGITAL LOG (785) 625-3858

API No.	15-065-23,658-00-00		
Company	H & C Oil Operating, Inc.		
Well	Paintin No. 10-1		
Field	Wildcat		
County	Graham	State	Kansas
Location	1650' FSL & 1650' FWL		
Sec: 10	Twp: 9 S	Rge: 25 W	
Permanent Datum	Ground Level	Elevation 2545	Other Services CNL/CDL DIL/BHCS
Log Measured From	Kelly Bushing	5 Ft. Above Perm. Datum	
Drilling Measured From	Frotkelly Bushing		K.B. 2550 D.F. 2545 G.L. 2545

Date	8/12/2010	
Run Number	Two	
Depth Driller	4110	
Depth Logger	4113	
Bottom Logged Interval	4112	
Top Log Interval	3450	
Casing Driller	8.625 @ 263	
Casing Logger	259	
Bit Size	7.875	
Type Fluid in Hole	Chemical	
Salinity, ppm CL	2,200	
Density / Viscosity	9.3	53
pH / Fluid Loss	10.5	8.4
Source of Sample	Flowline	
Rm @ Meas. Temp	.85 @ 75	
Rmf @ Meas. Temp	.64 @ 75	
Rmc @ Meas. Temp	1.15 @ 75	
Source of Rmf / Rmc	Charts	
Rm @ BHT	.54 @ 119	
Operating Rig Time	5 Hours	
Max Rec. Temp. F	119	
Equipment Number	4	
Location	Havs	
Recorded By	K. Bange	
Witnessed By	Clayton Erickson	

<<< Fold Here >>>

All interpretations are opinions based on inferences from electrical or other measurements and we cannot and do not guarantee the accuracy or correctness of any interpretation, and we shall not, except in the case of gross or willful negligence on our part, be liable or responsible for any loss, costs, damages, or expenses incurred or sustained by anyone resulting from any interpretation made by any of our officers, agents or employees. These interpretations are also subject to our general terms and conditions set out in our current Price Schedule.

Comments

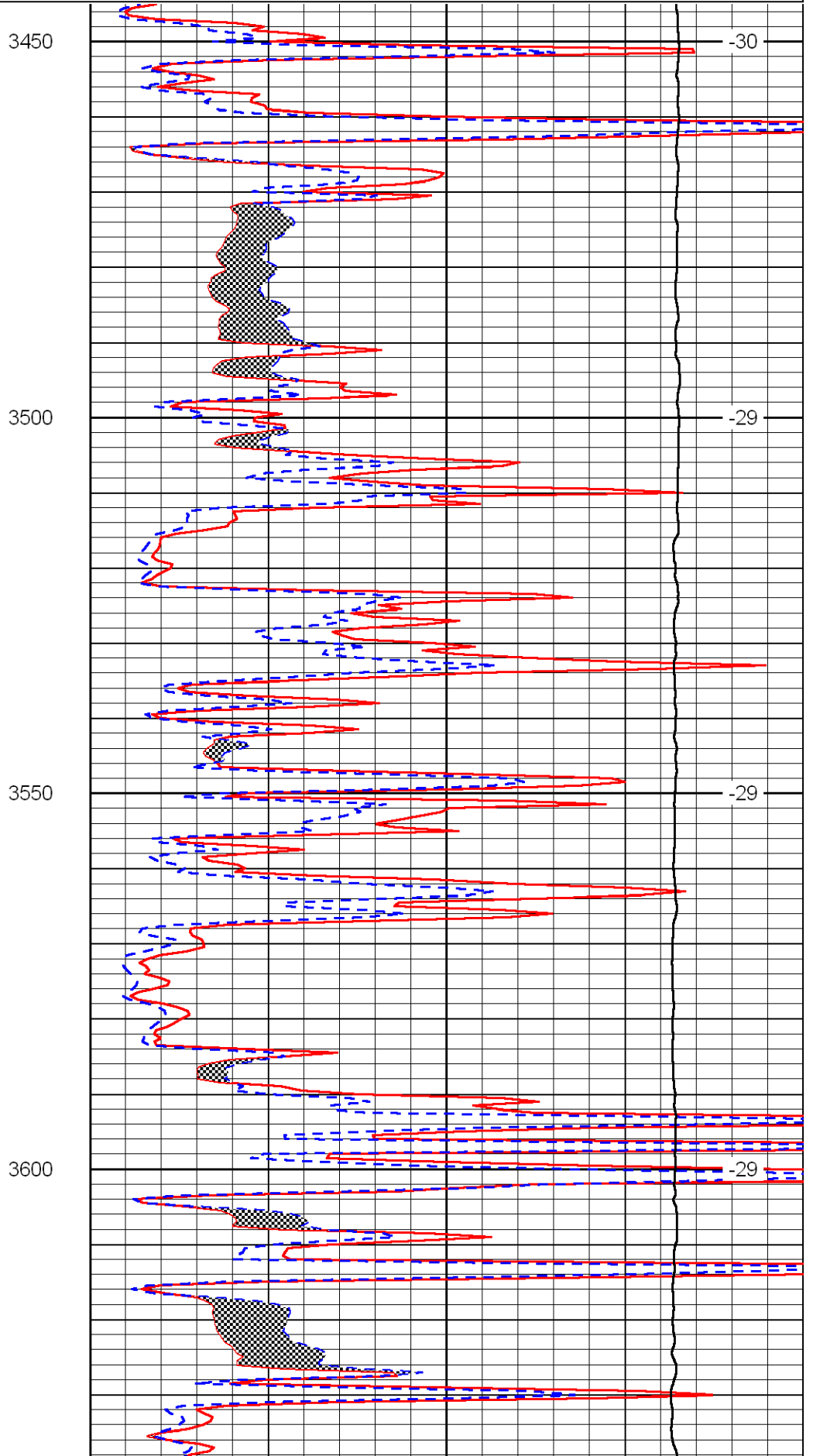
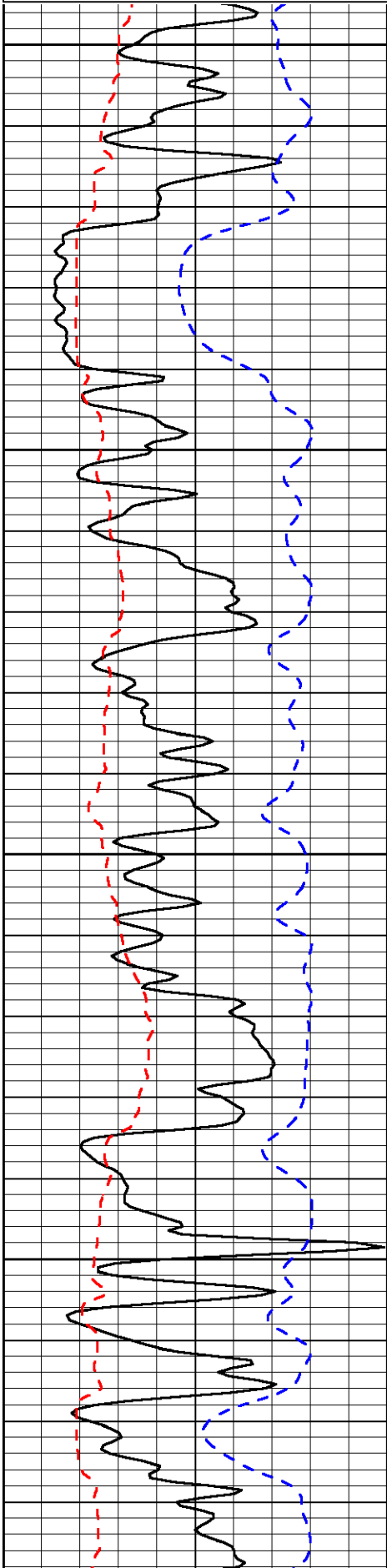
Thank you for using Log-Tech, Inc.
(785) 625-3858

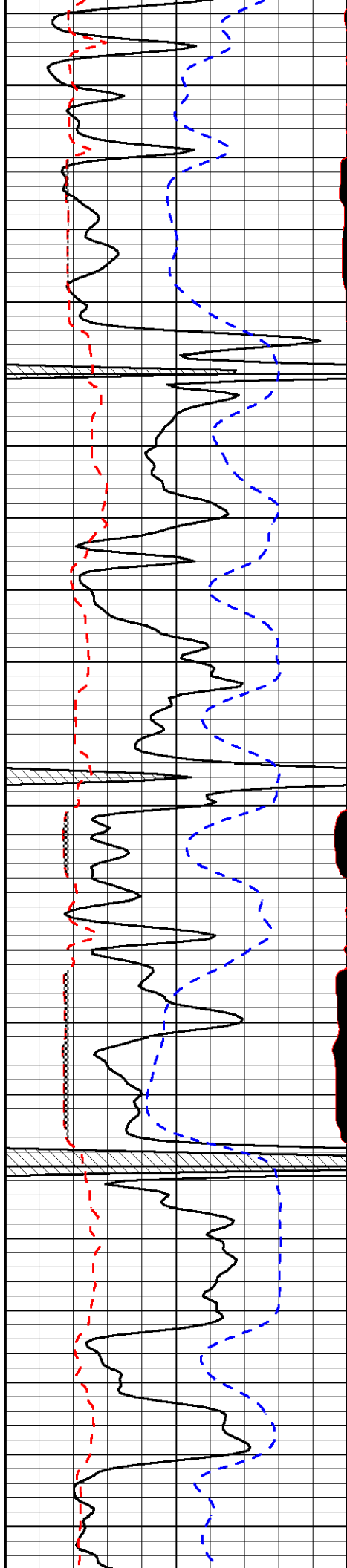
St. Peter, N to K rd, 1/2 W, N into (follow lease rd)

Database File: h_c081210hd.db
 Dataset Pathname: dil/h&cstack
 Presentation Format: micro
 Dataset Creation: Thu Aug 12 11:19:31 2010
 Charted by: Depth in Feet scaled 1:240

0	Gamma Ray	150
6	MCAL (GAPI)	16
2.875	Mud Cake (GAPI)	7.875
-200	SP	0

0	Micro Inverse 1 X 1	40
0	Micro Normal 2"	40
10000	Line Weight	0
		LSPD





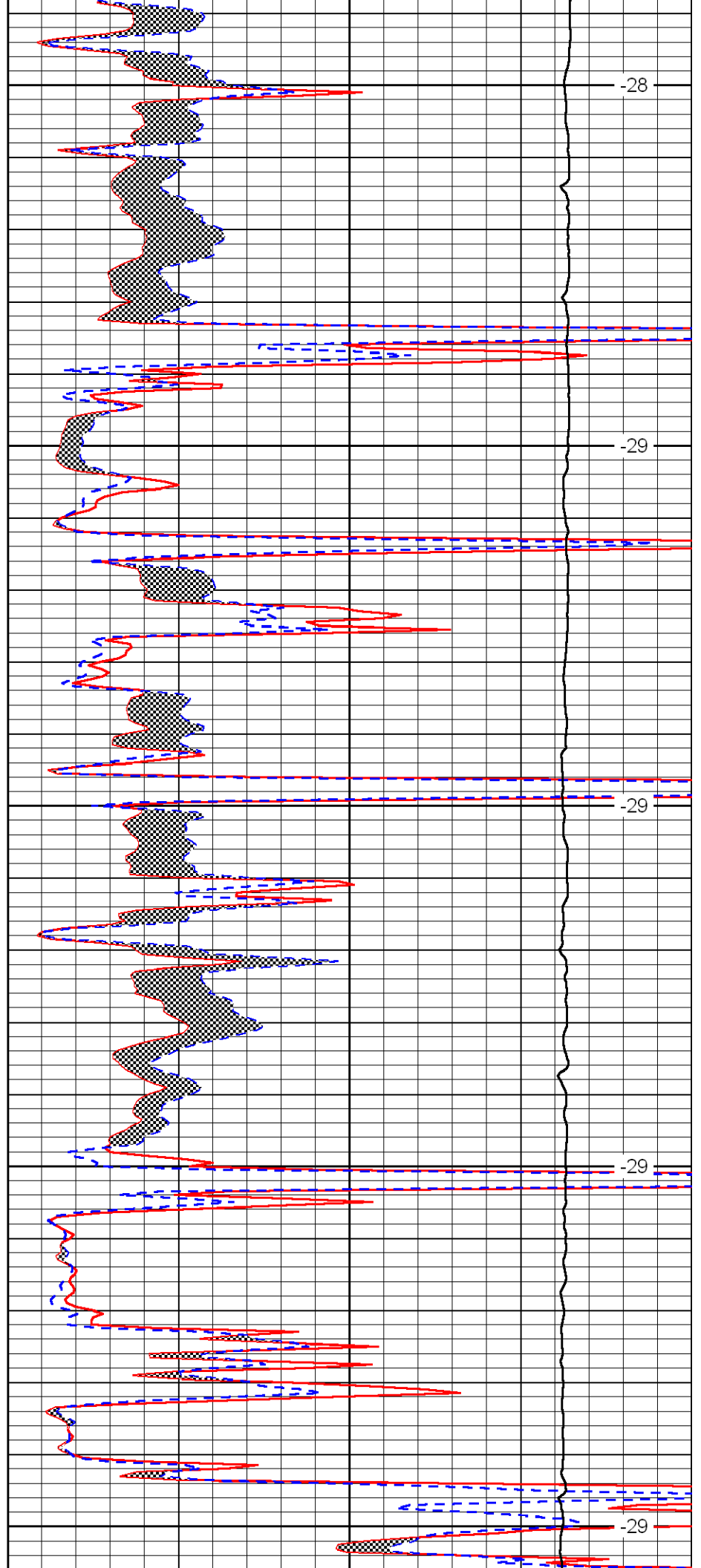
3650

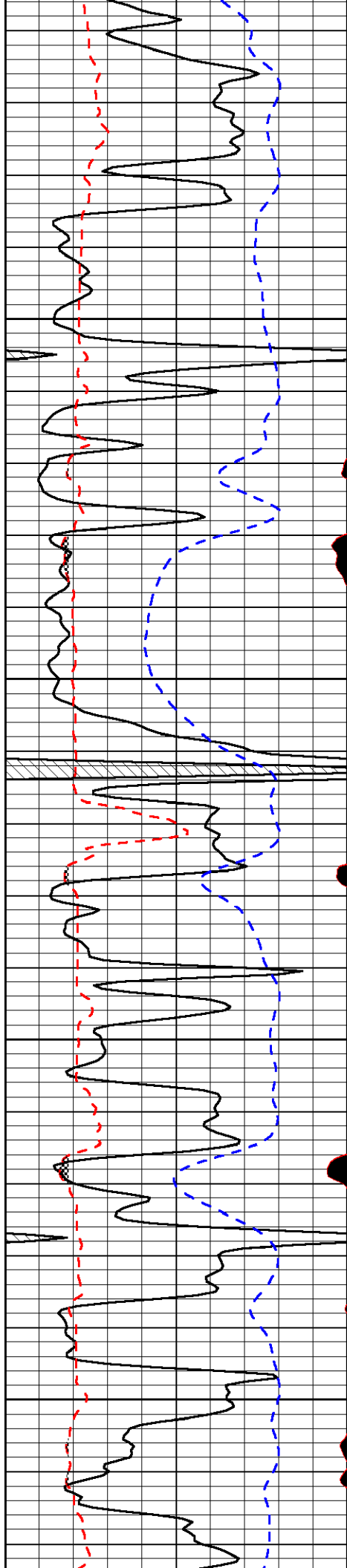
3700

3750

3800

3850



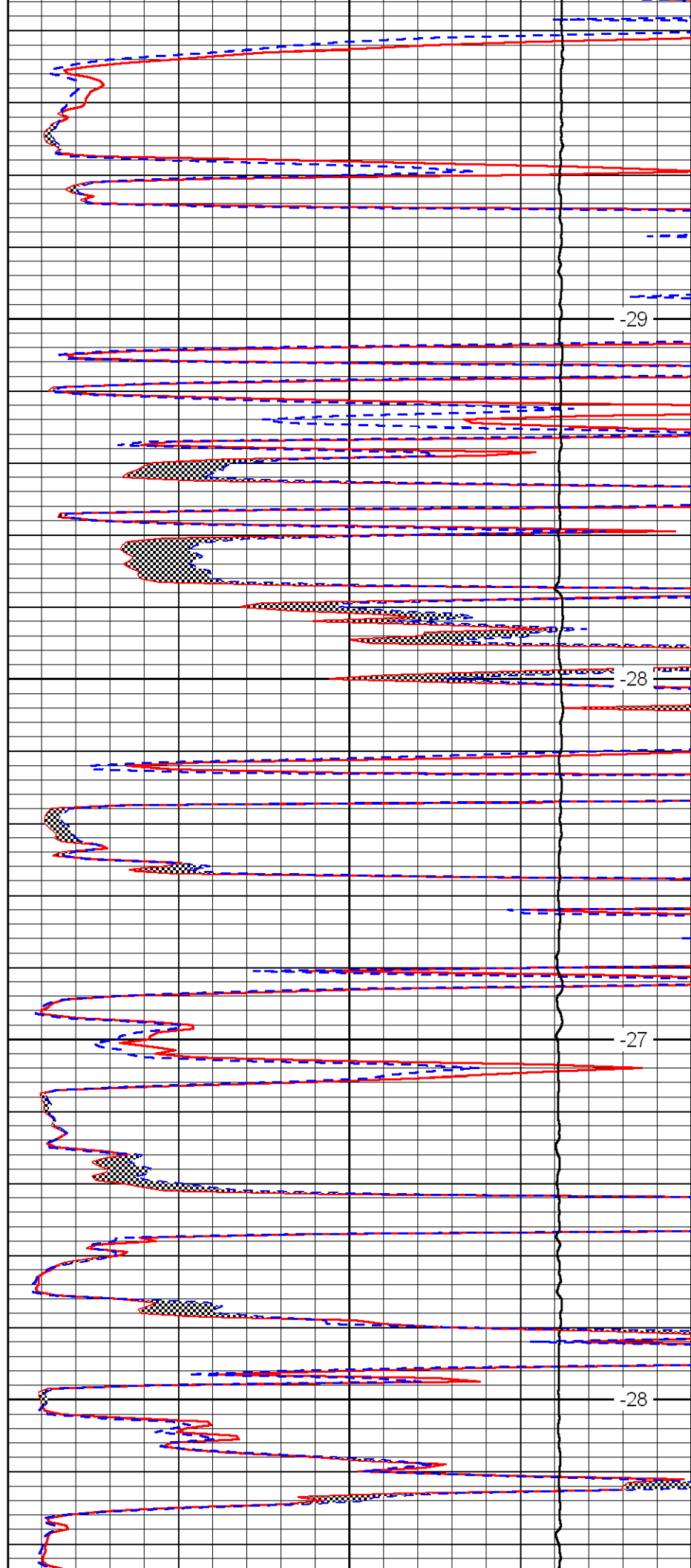


3900

3950

4000

4050

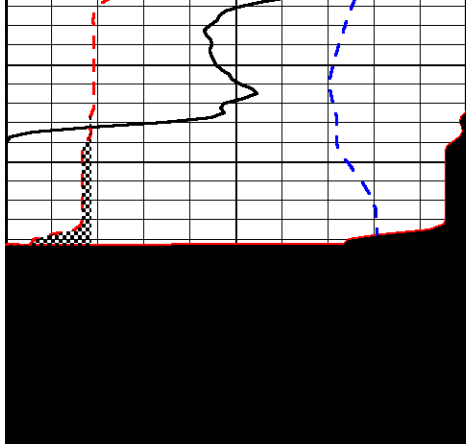


-29

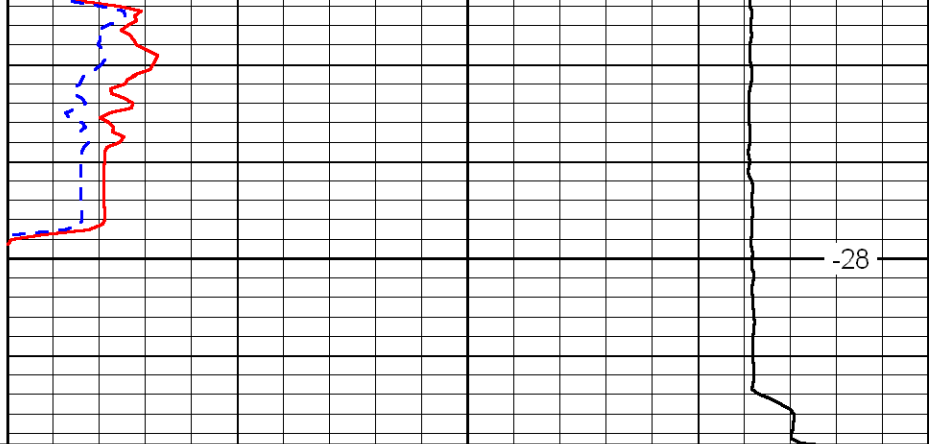
-28

-27

-28



4100



-28

0	Gamma Ray	150
6	MCAL (GAPI)	16
2.875	Mud Cake (GAPI)	7.875
-200	SP	0

0	Micro Inverse 1 X 1	40
0	Micro Normal 2''	40
10000	Line Weight	0

LSPD