



Dual Induction Log

DIGITAL LOG (785) 625-3858

API No.	15-065-23,658-00-00		
Company	H & C Oil Operating, Inc.		
Well	Paintin No. 10-1		
Field	Wildcat		
County	Graham	State	Kansas
Location	1650' FSL & 1650' FWL		
Sec:	10	Twp:	9 S Rge: 25 W
Permanent Datum	Ground Level	Elevation	2545
Log Measured From	Kelly Bushing	5	Ft. Above Perm. Datum
Drilling Measured From	Kelly Bushing		
		K.B.	2550
		D.F.	2545
		G.L.	2545

Date	8/12/2010	
Run Number	One	
Depth Driller	4110	
Depth Logger	4113	
Bottom Logged Interval	4112	
Top Log Interval	250	
Casing Driller	8.625 @ 263	
Casing Logger	259	
Bit Size	7.875	
Type Fluid in Hole	Chemical	
Salinity, ppm CL	2.200	
Density / Viscosity	9.3	53
pH / Fluid Loss	10.5	8.4
Source of Sample	Flowline	
Rm @ Meas. Temp	.85	@ 75
Rmf @ Meas. Temp	.64	@ 75
Rmc @ Meas. Temp	1.15	@ 75
Source of Rmf / Rmc	Charts	
Rm @ BHT	.54	@ 119
Operating Rig Time	5 Hours	
Max Rec. Temp. F	119	
Equipment Number	4	
Location	Havs	
Recorded By	K. Bange	
Witnessed By	Clayton Erickson	

<<< Fold Here >>>

All interpretations are opinions based on inferences from electrical or other measurements and we cannot and do not guarantee the accuracy or correctness of any interpretation, and we shall not, except in the case of gross or willful negligence on our part, be liable or responsible for any loss, costs, damages, or expenses incurred or sustained by anyone resulting from any interpretation made by any of our officers, agents or employees. These interpretations are also subject to our general terms and conditions set out in our current Price Schedule.

Comments

Thank you for using Log-Tech, Inc.
(785) 625-3858

St. Peter, N to K rd, 1/2 W, N into (follow lease rd)

Database File: h_c081210hd.db
 Dataset Pathname: dil/h&cstack
 Presentation Format: dil2in
 Dataset Creation: Thu Aug 12 11:19:31 2010
 Charted by: Depth in Feet scaled 1:600

0 Gamma Ray 150
-200 SP 0

0 Shallow Resistivity 50
0 Deep Resistivity 50

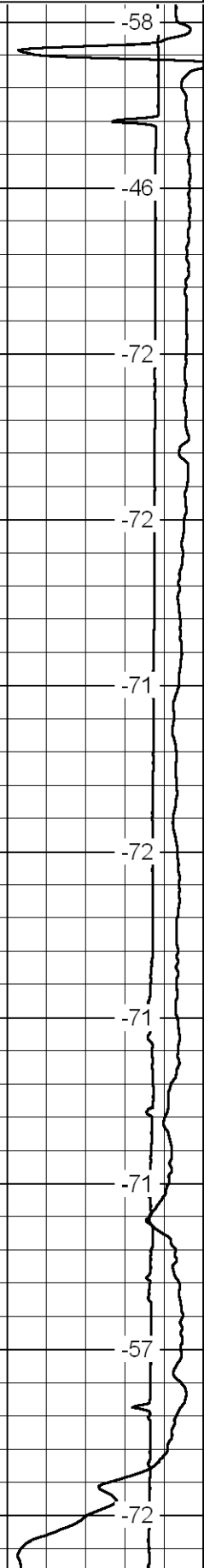
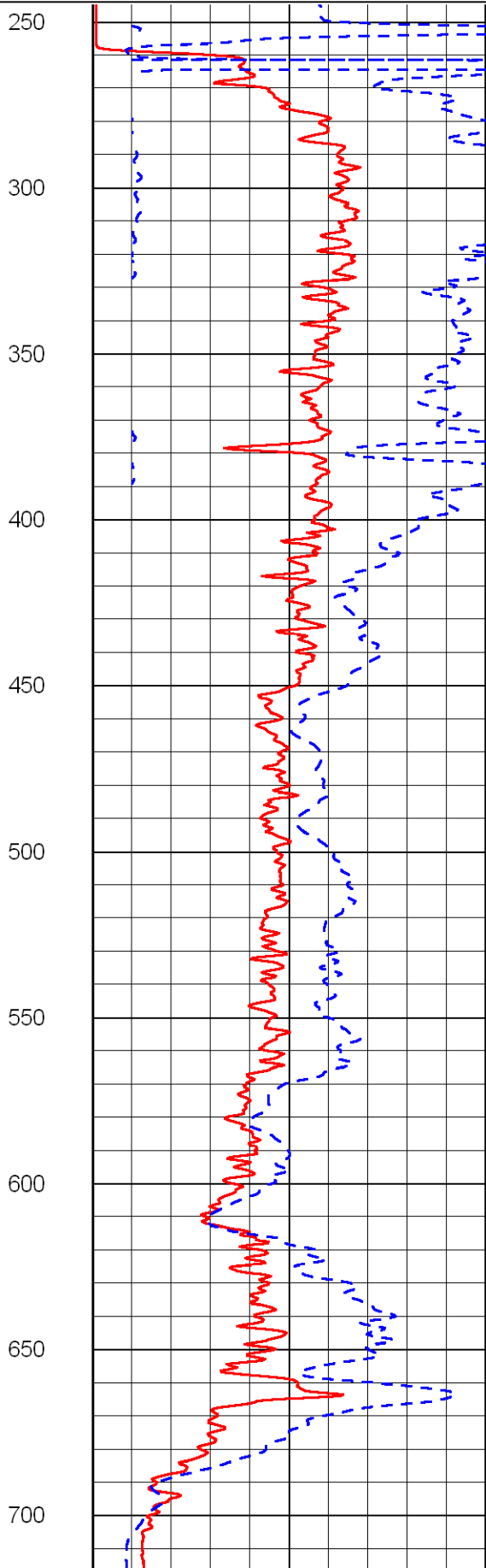
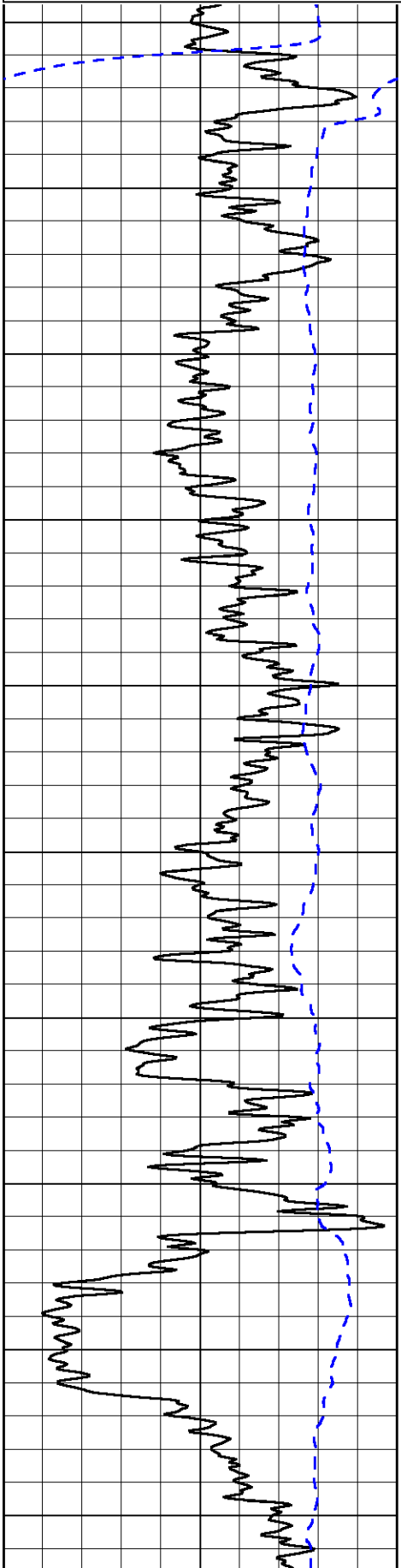
LSPD

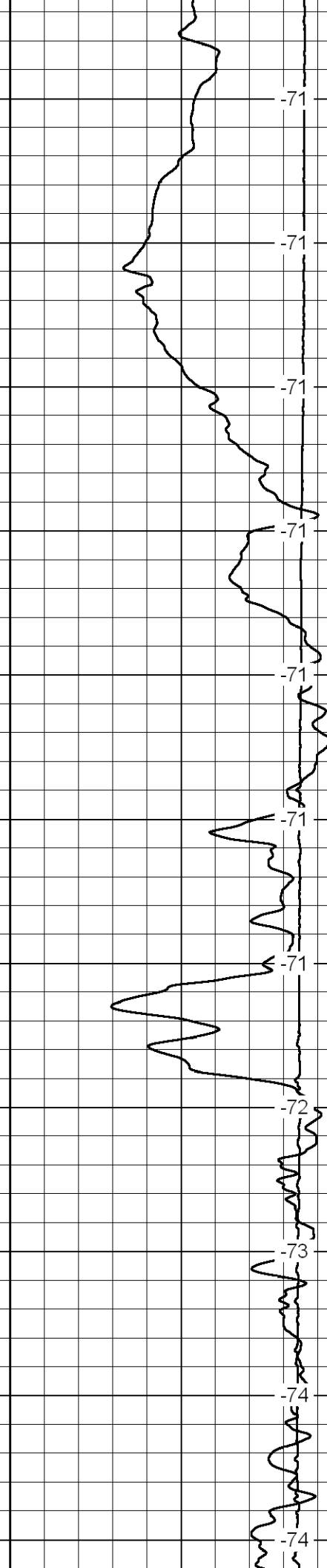
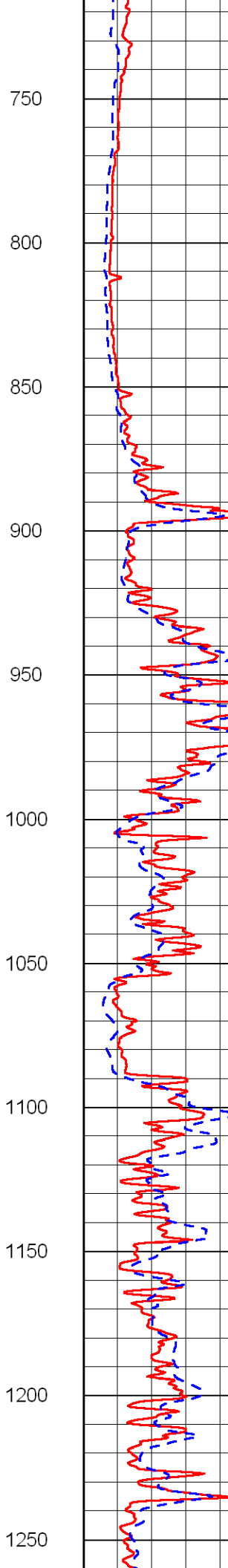
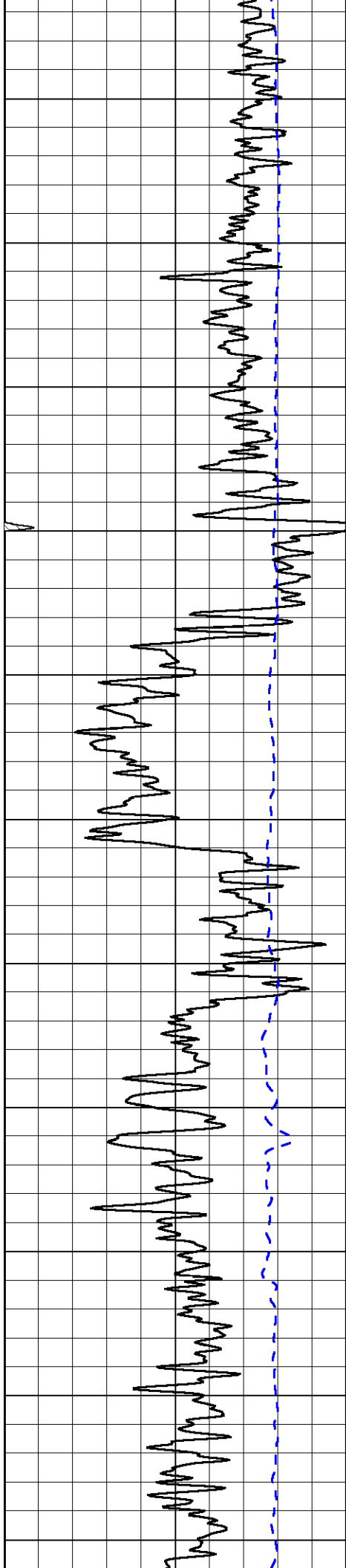
1000 Conductivity 0

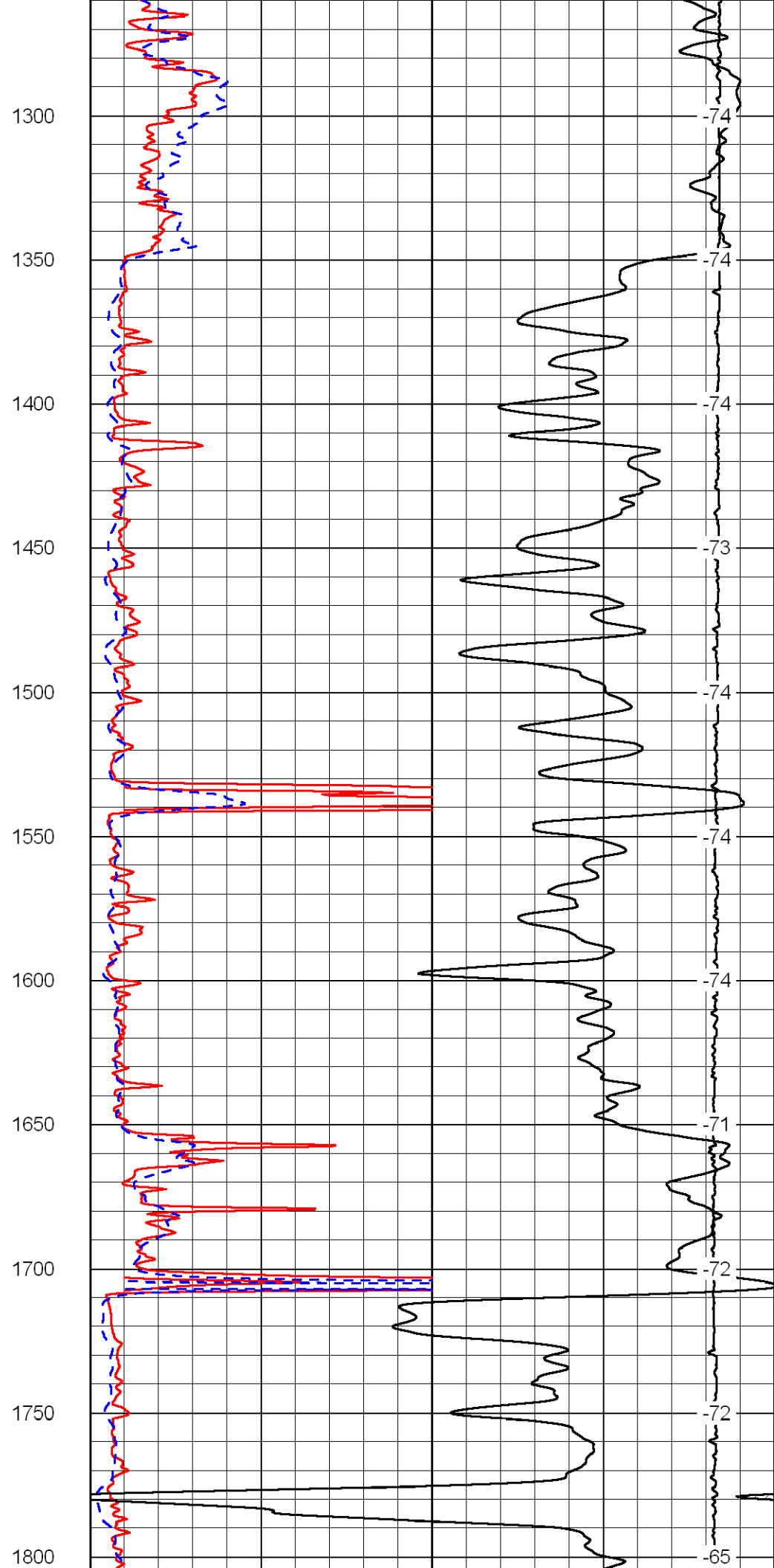
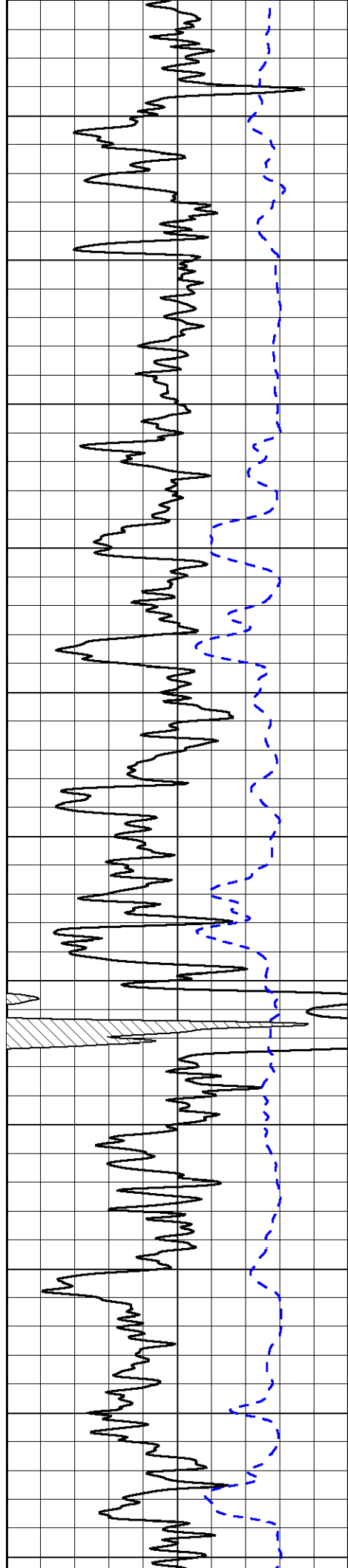
15000 Line Tension 0

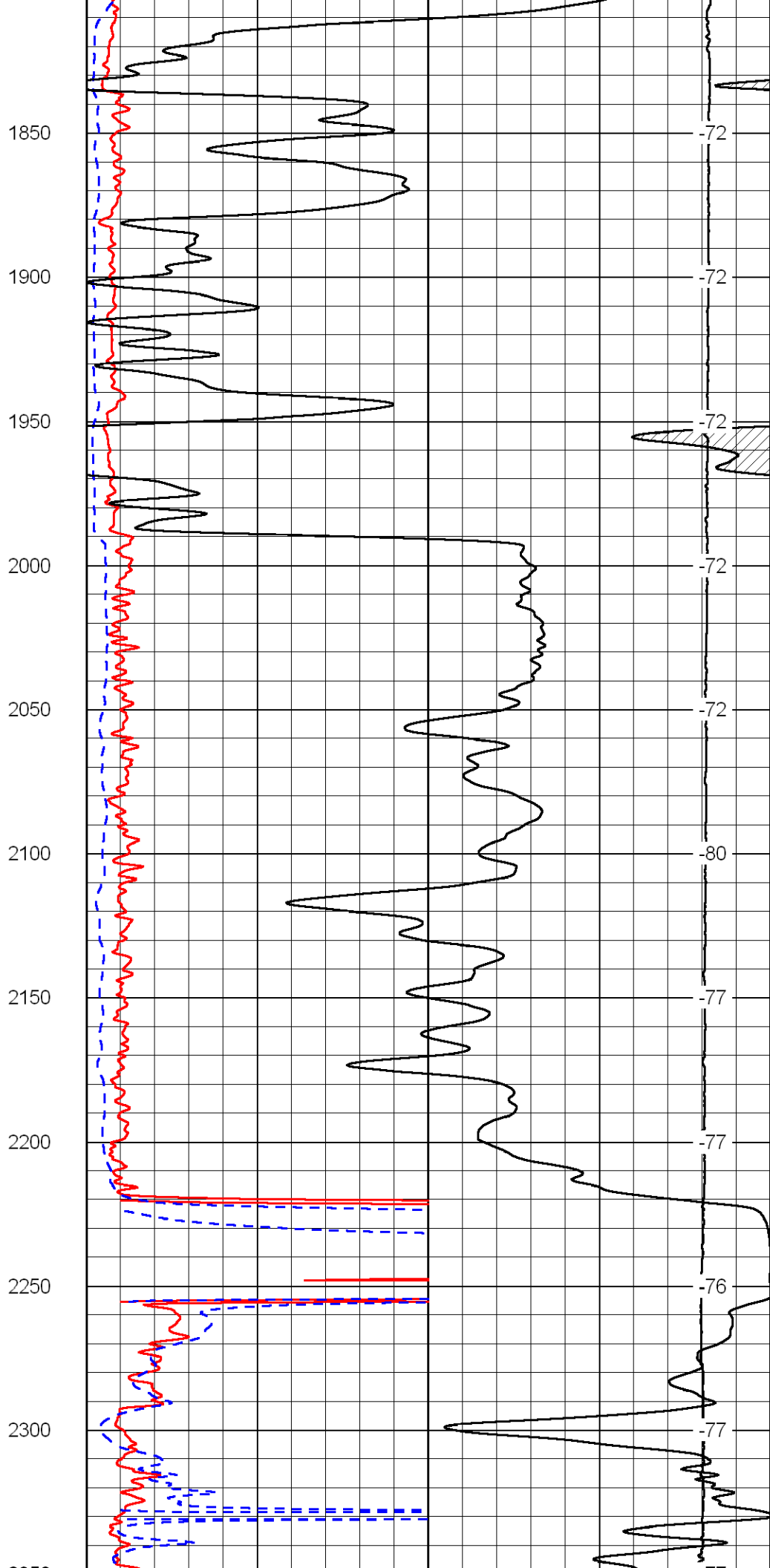
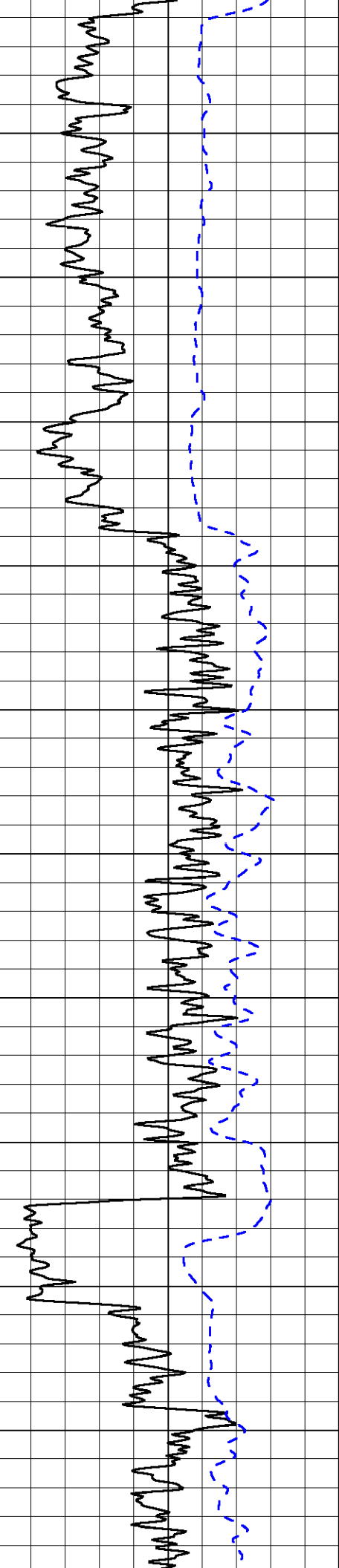
50 Shallow Resistivity 500

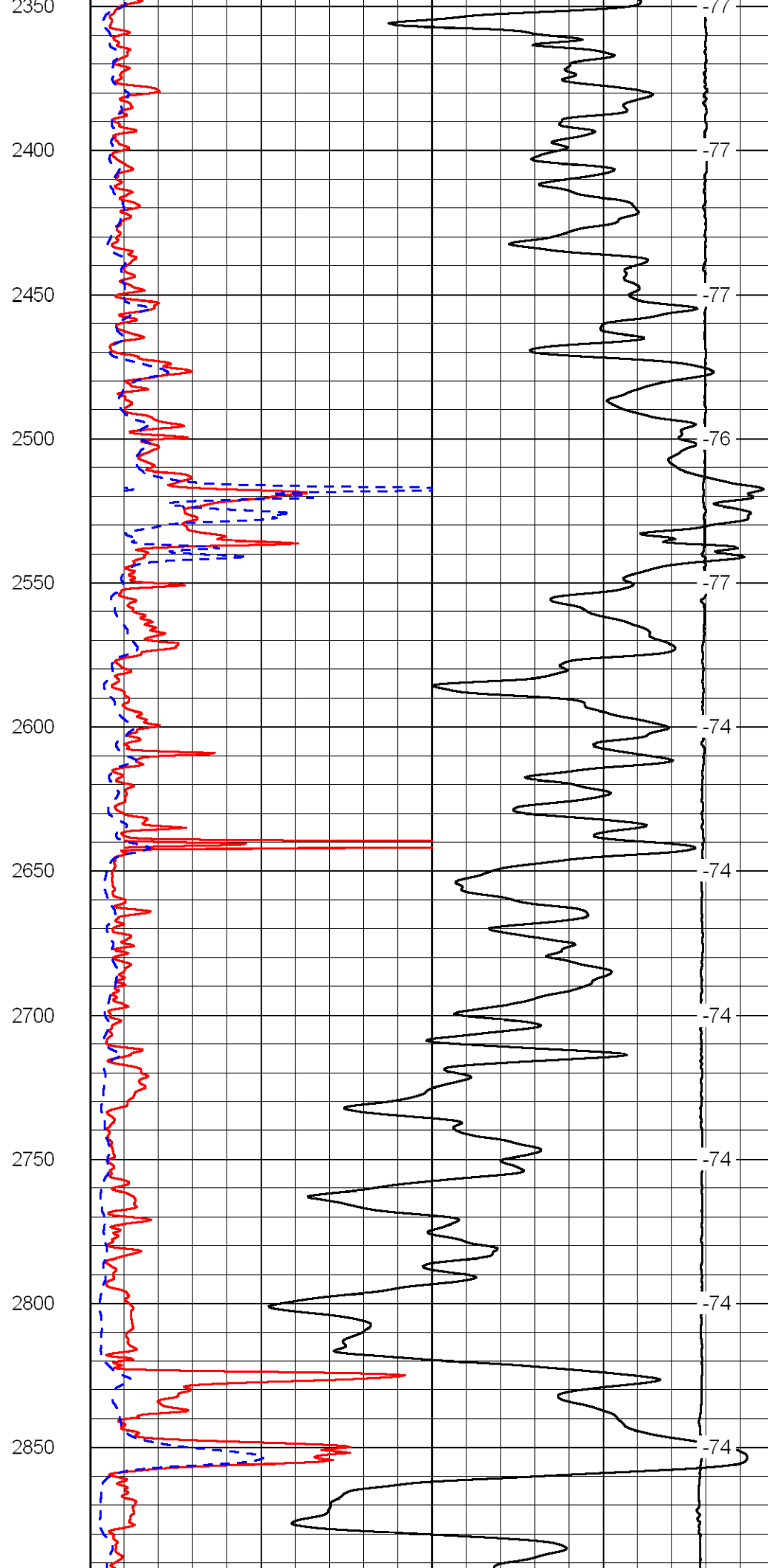
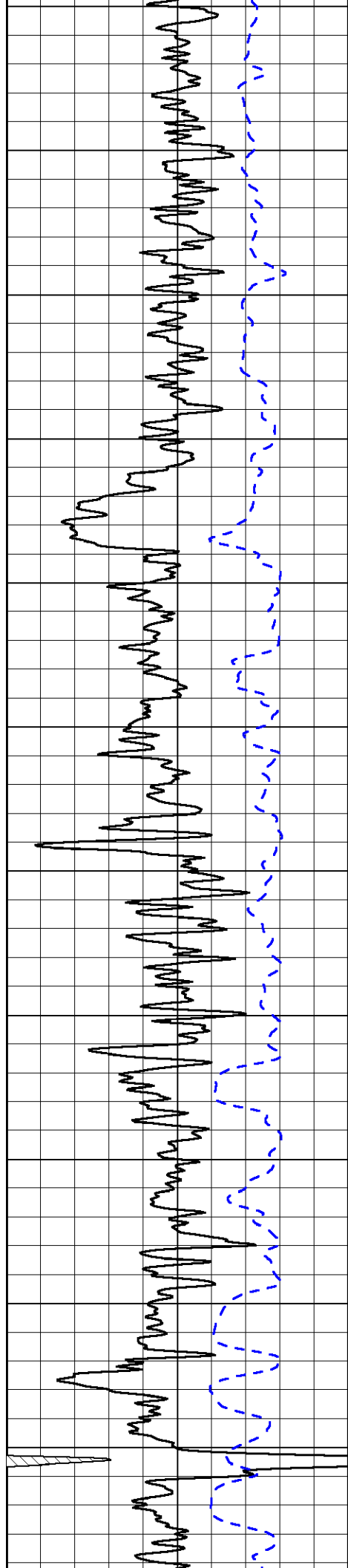
50 Deep Resistivity 500

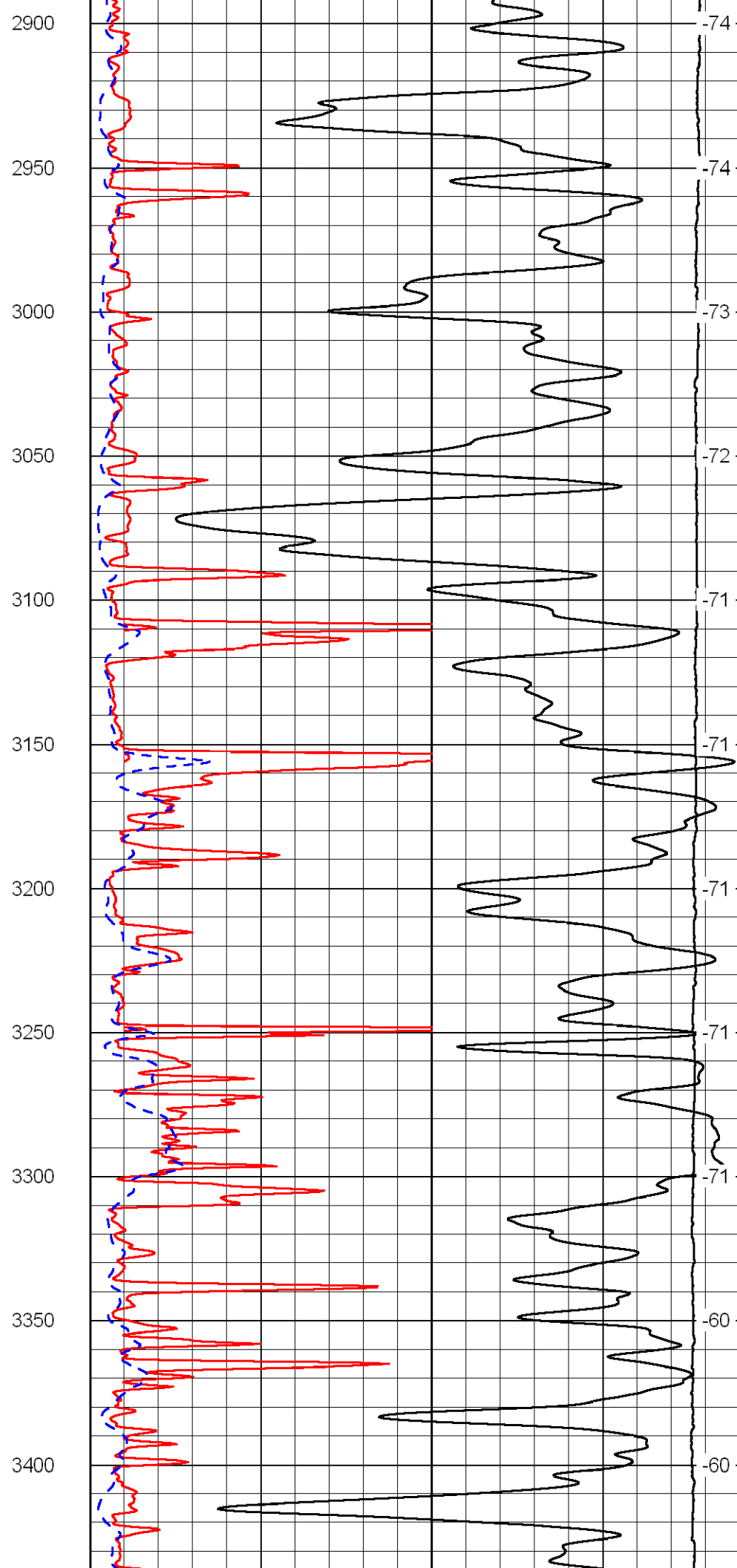
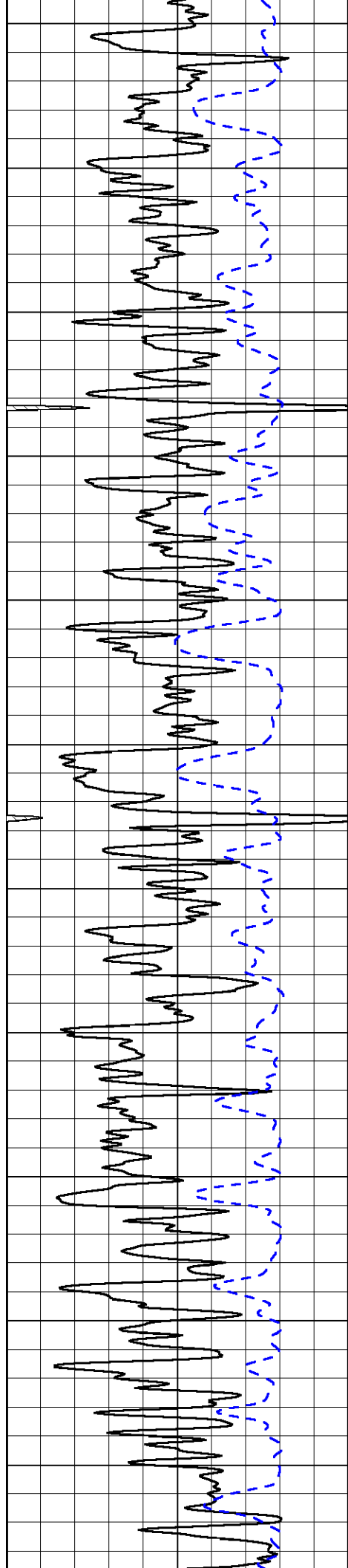


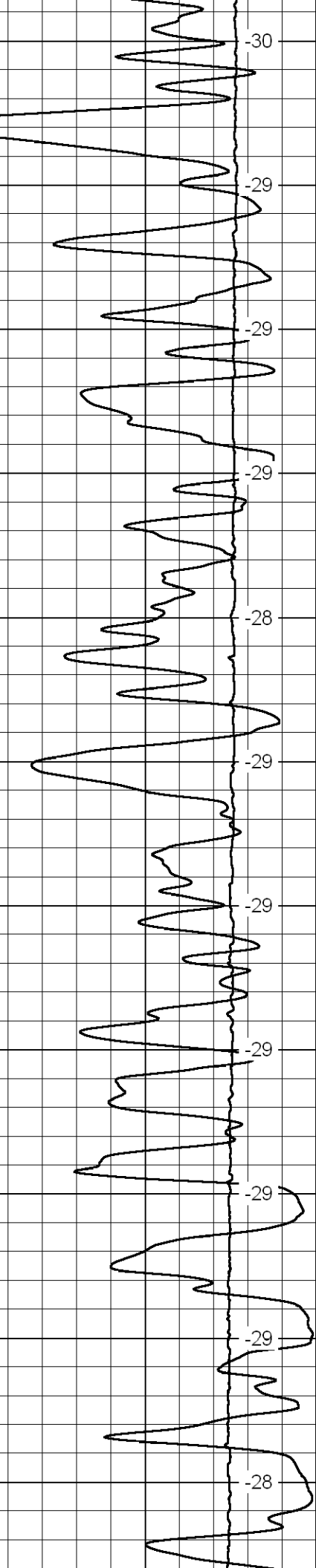
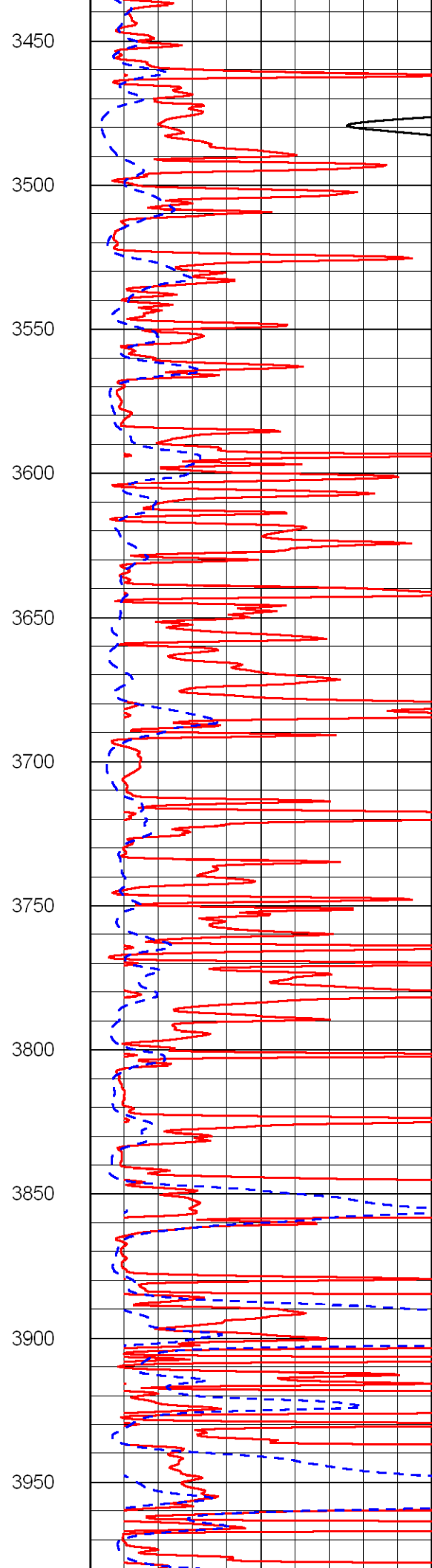
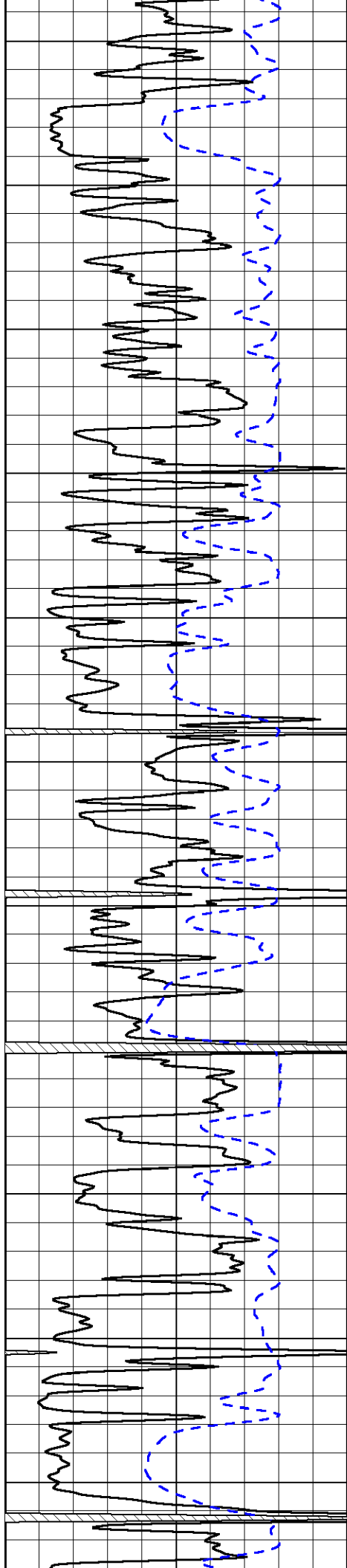


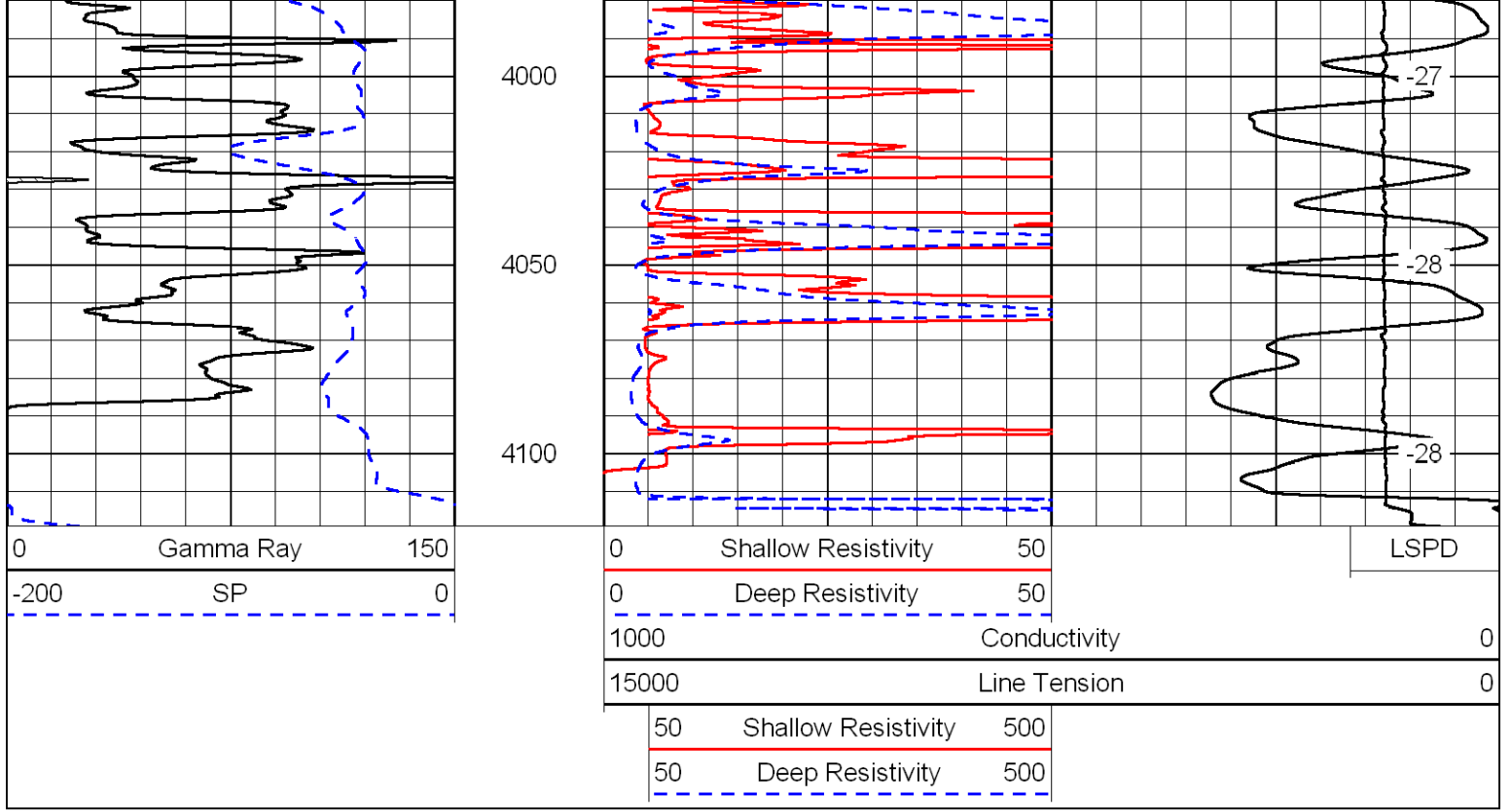




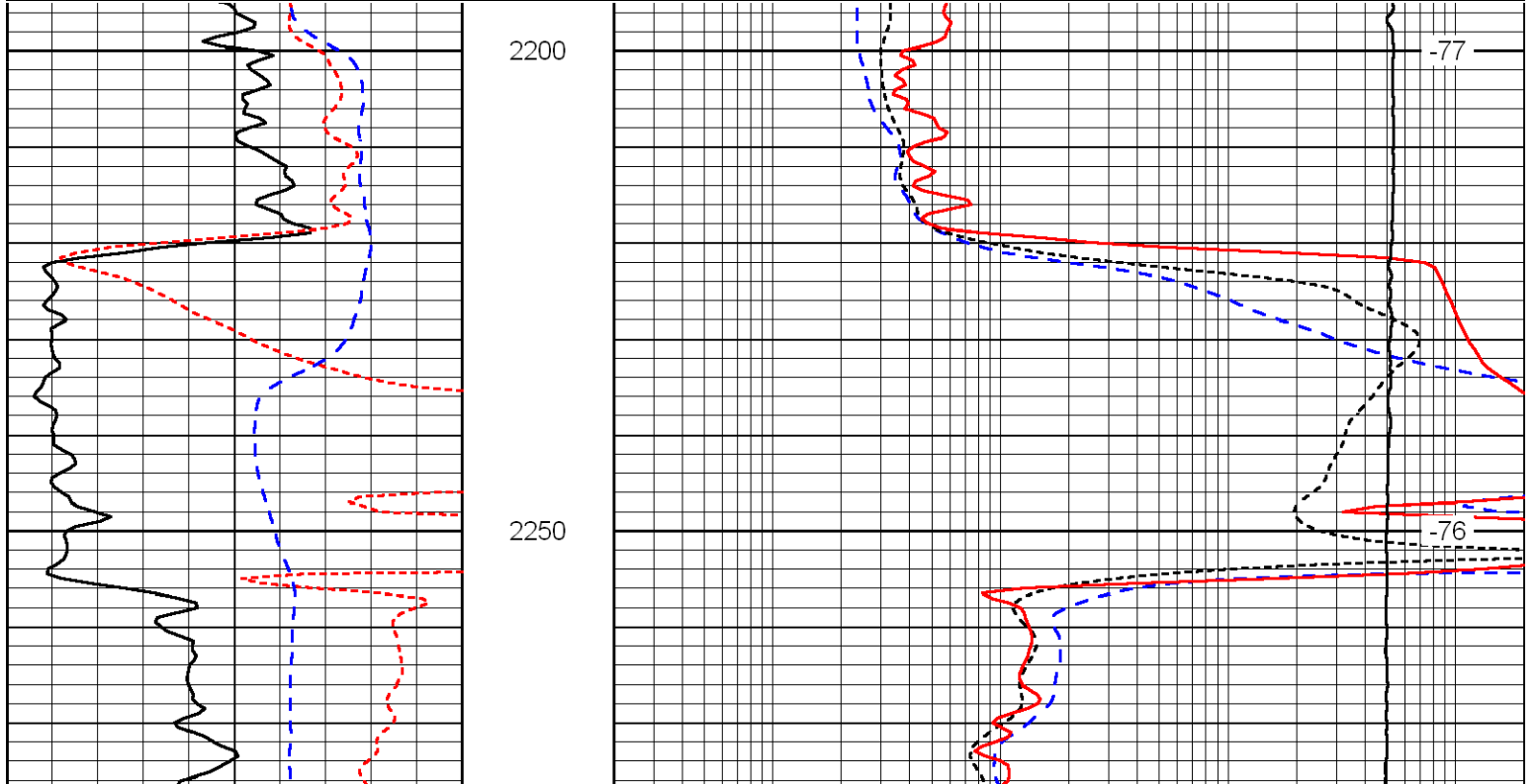
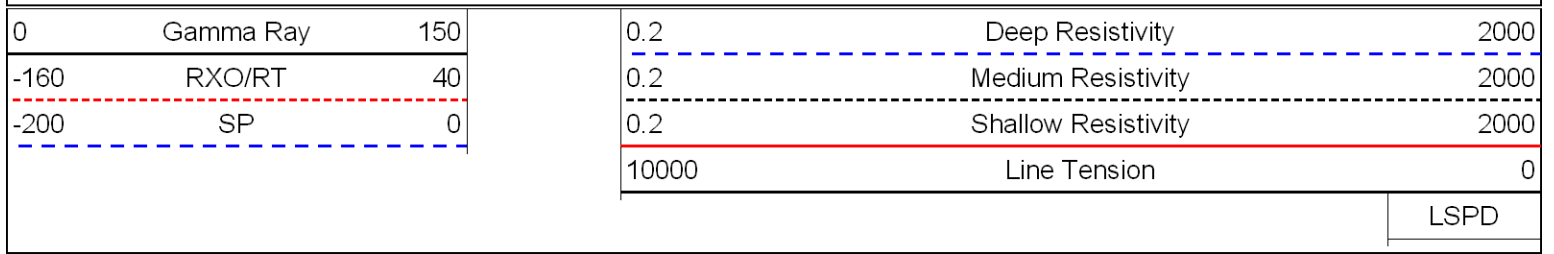


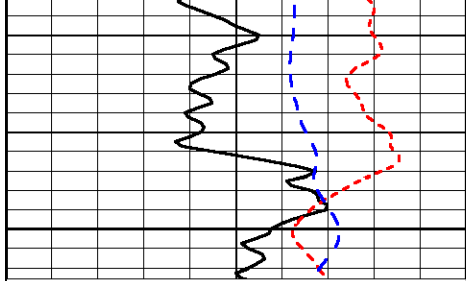




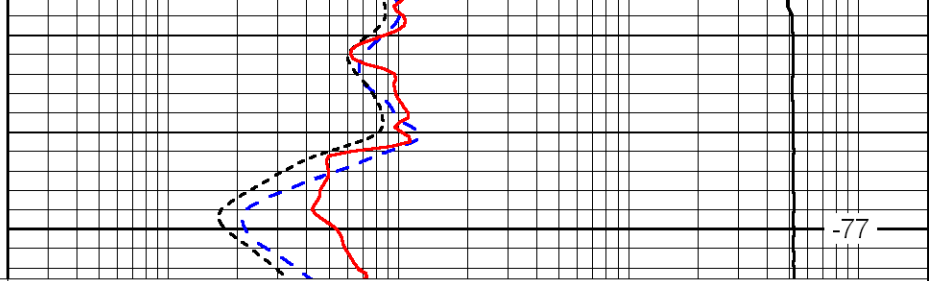


Database File: h_c081210hd.db
 Dataset Pathname: dil/h&cstack
 Presentation Format: dil
 Dataset Creation: Thu Aug 12 11:19:31 2010
 Charted by: Depth in Feet scaled 1:240





2300



0	Gamma Ray	150
-160	RXO/RT	40
-200	SP	0

0.2	Deep Resistivity	2000
0.2	Medium Resistivity	2000
0.2	Shallow Resistivity	2000
10000	Line Tension	0

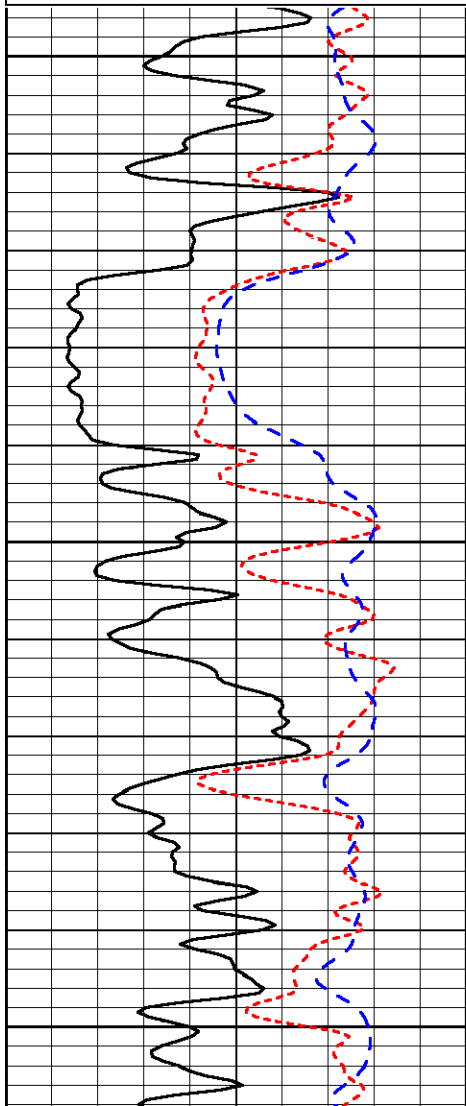
LSPD

Database File: h_c081210hd.db
 Dataset Pathname: dil/h&cstack
 Presentation Format: dil
 Dataset Creation: Thu Aug 12 11:19:31 2010
 Charted by: Depth in Feet scaled 1:240

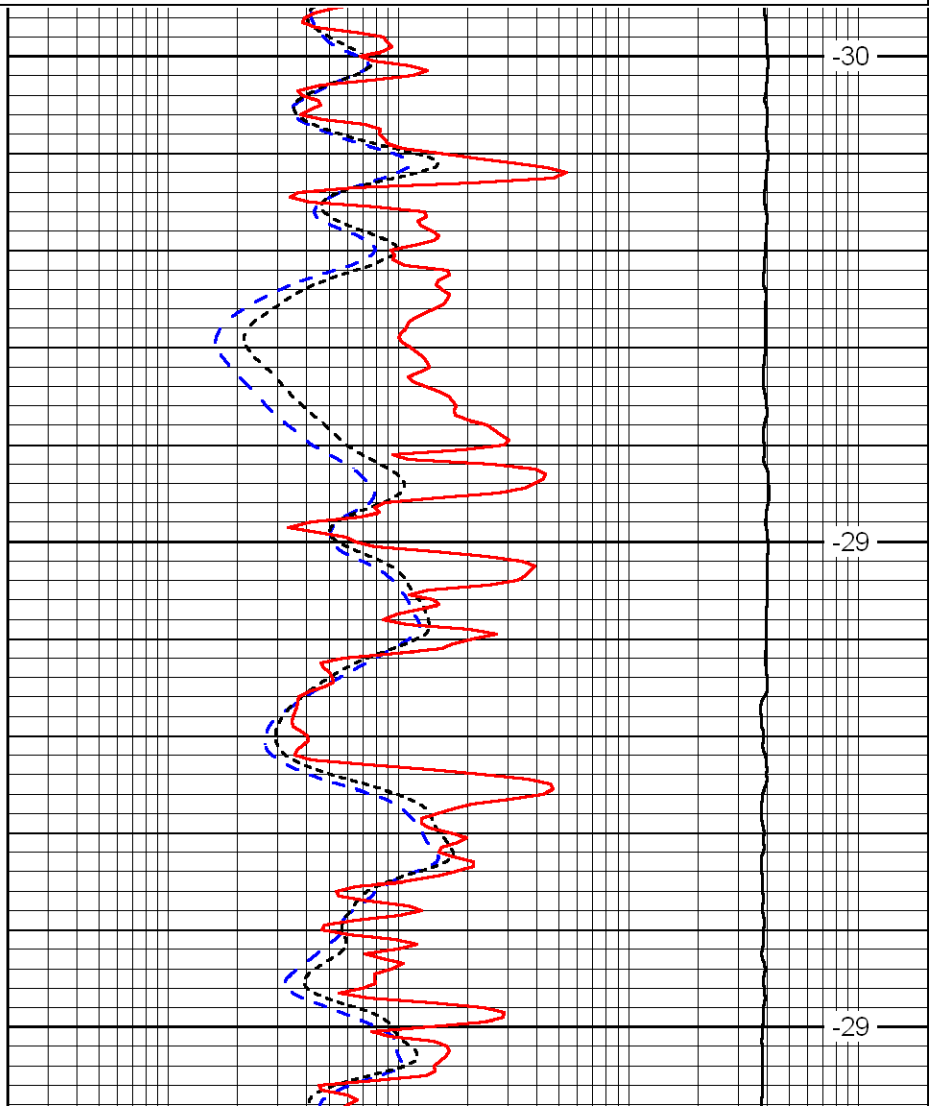
0	Gamma Ray	150
-160	RXO/RT	40
-200	SP	0

0.2	Deep Resistivity	2000
0.2	Medium Resistivity	2000
0.2	Shallow Resistivity	2000
10000	Line Tension	0

LSPD



3450



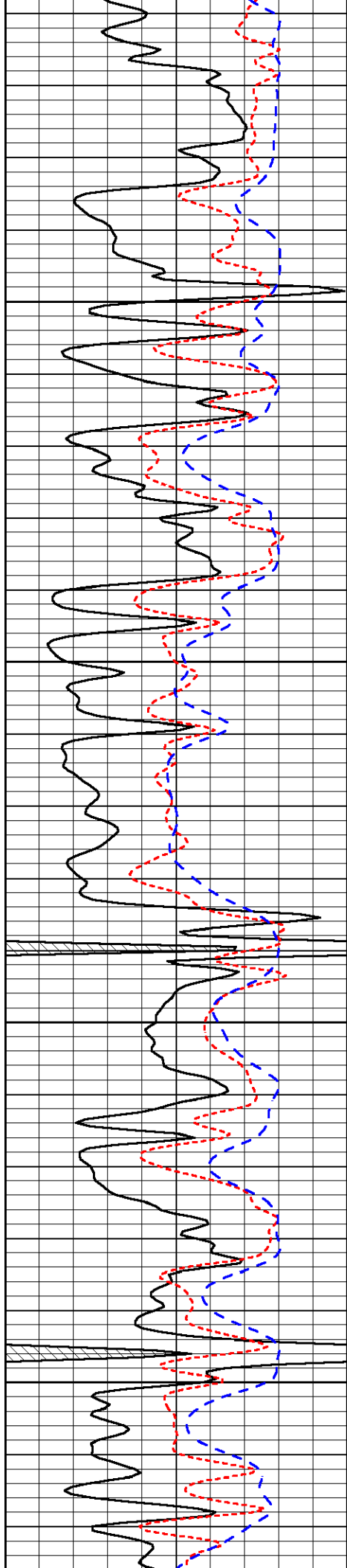
-30

3500

-29

3550

-29

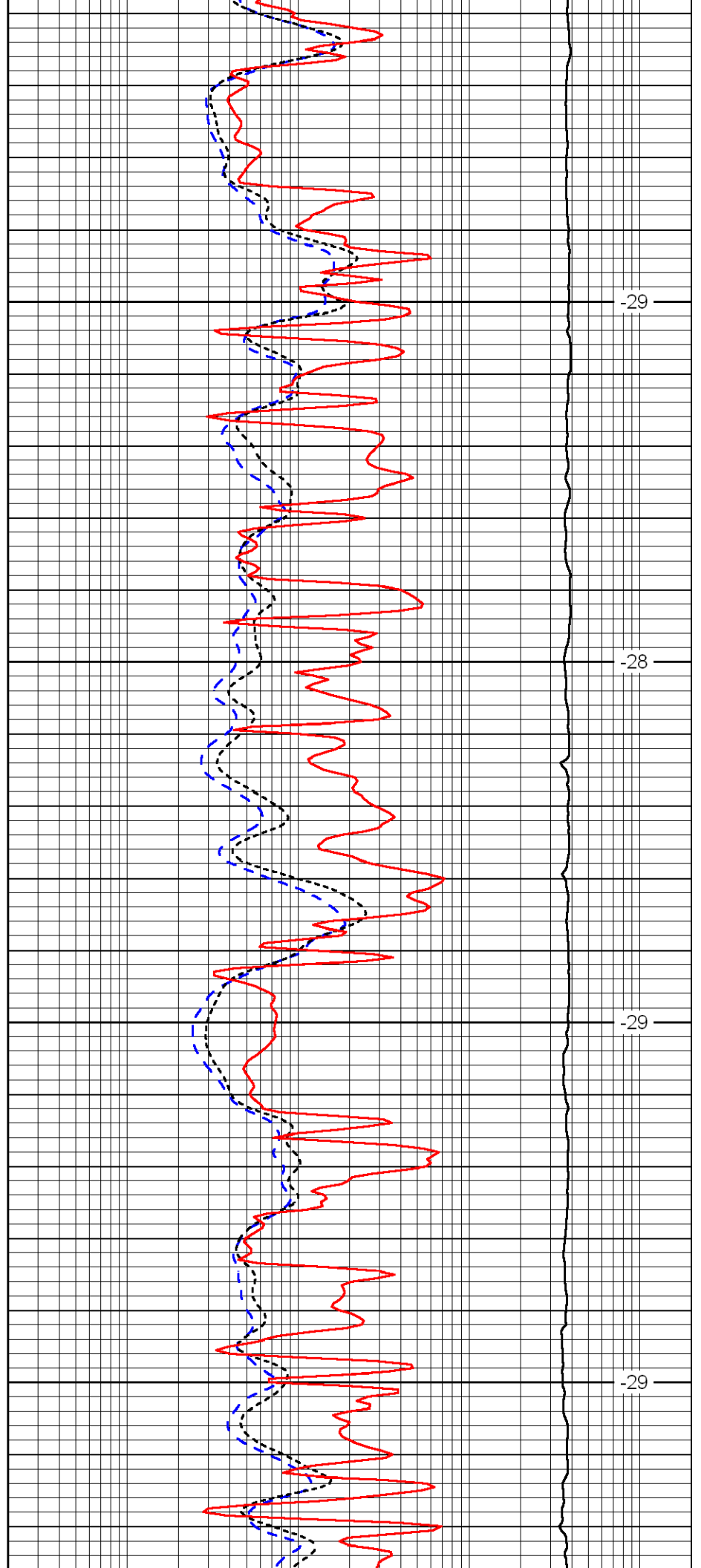


3600

3650

3700

3750

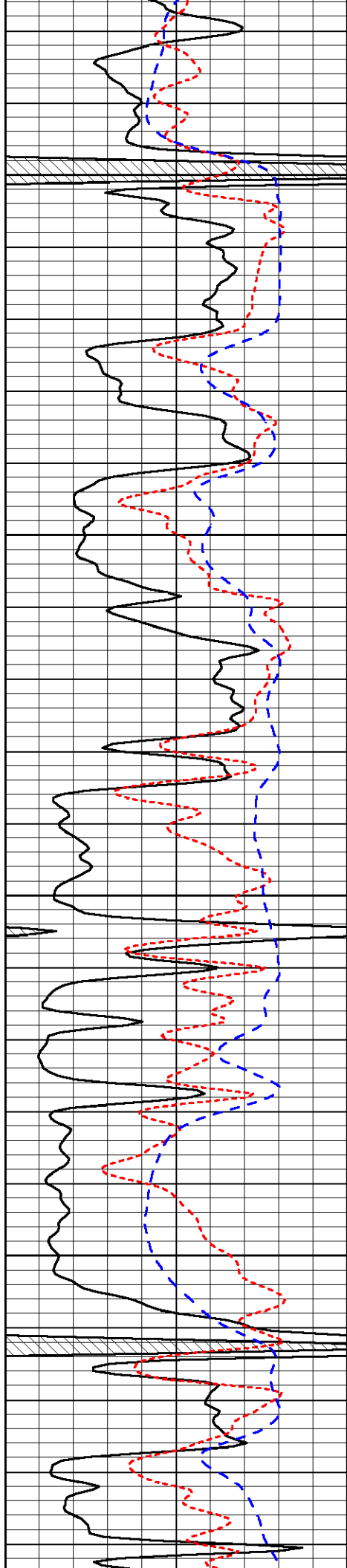


-29

-28

-29

-29

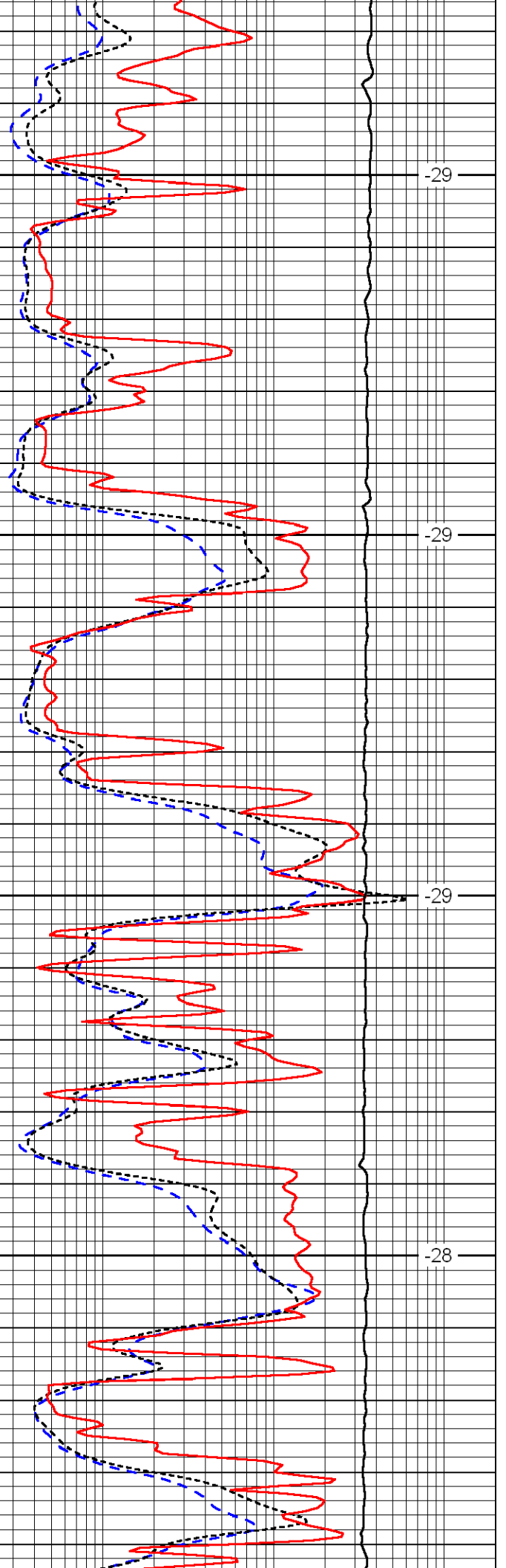


3800

3850

3900

3950

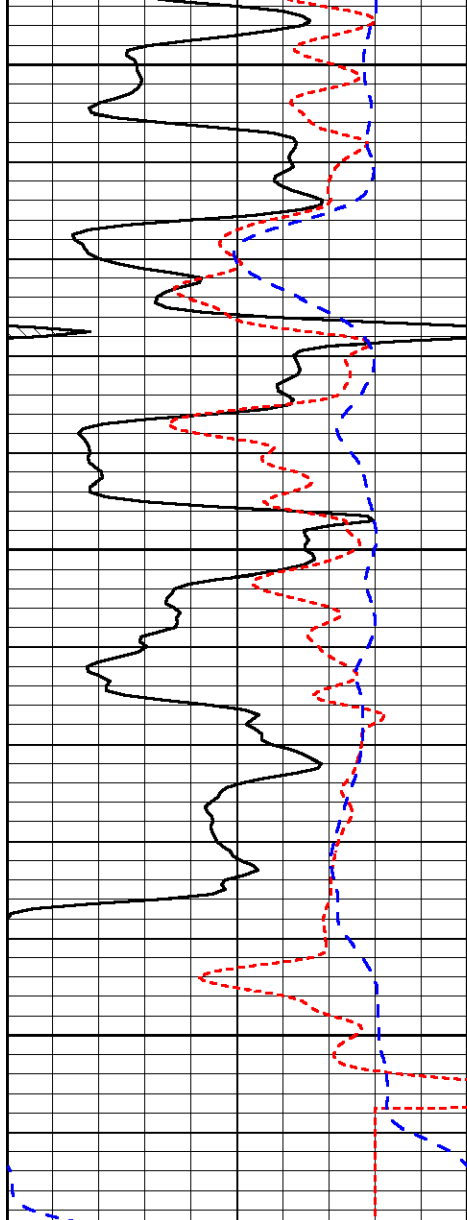


-29

-29

-29

-28

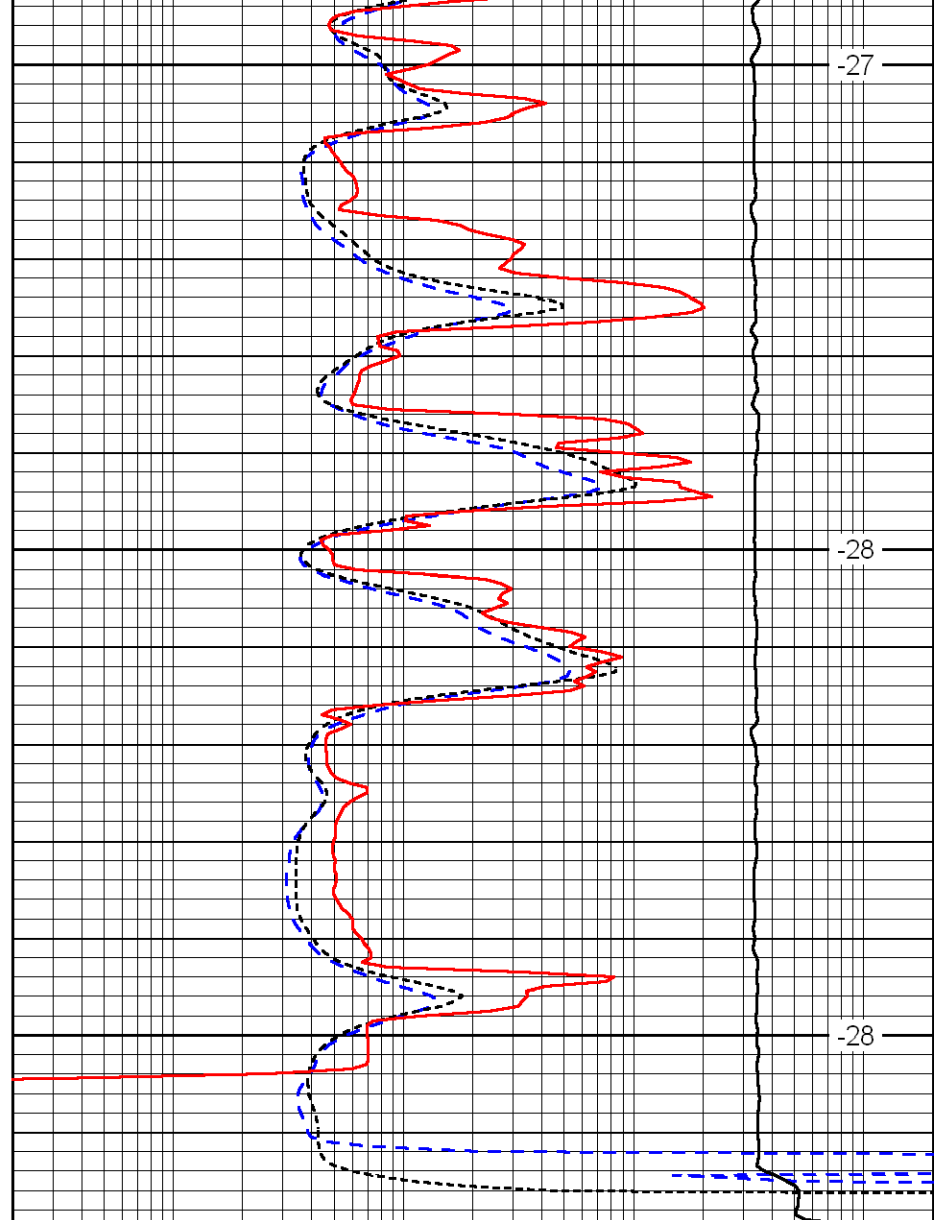


4000

4050

4100

0	Gamma Ray	150
-160	RXO/RT	40
-200	SP	0



-27

-28

-28

0.2	Deep Resistivity	2000
0.2	Medium Resistivity	2000
0.2	Shallow Resistivity	2000
10000	Line Tension	0

LSPD