



Microresistivity Log

DIGITAL LOG (785) 625-3858

API No.	15-109-20,914-00-00		
Company	Brito Oil Company, Inc.		
Well	Fairleigh 'A' No. 1-19		
Field	Wildcat		
County	Logan	State	Kansas
Location	1700' FSL & 540' FEL		
Sec: 19	Twp: 15 S	Rge: 32 W	
Permanent Datum	Ground Level	Elevation	2798
Log Measured From	Kelly Bushing	5	Ft. Above Perm. Datum
Drilling Measured From	Kelly Bushing		
		K.B.	2803
		D.F.	2798
		G.L.	2798

Date	6/09/2010	
Run Number	Two	
Depth Driller	4509	
Depth Logger	4511	
Bottom Logged Interval	4510	
Top Log Interval	3400	
Casing Driller	8.625 @ 220	
Casing Logger	220	
Bit Size	7.875	
Type Fluid in Hole	Chemical	
Salinity, ppm CL	2,300	
Density / Viscosity	8.9	67
pH / Fluid Loss	9.5	8.0
Source of Sample	Flowline	
Rm @ Meas. Temp	.70 @	75
Rmf @ Meas. Temp	.53 @	75
Rmc @ Meas. Temp	.95 @	75
Source of Rmf / Rmc	Charts	
Rm @ BHT	.43 @	123
Operating Rig Time	5 Hours	
Max Rec. Temp. F	123	
Equipment Number	4	
Location	Hays	
Recorded By	K. Bange	
Witnessed By	Paul Gunzelman	

<<< Fold Here >>>

All interpretations are opinions based on inferences from electrical or other measurements and we cannot and do not guarantee the accuracy or correctness of any interpretation, and we shall not, except in the case of gross or willful negligence on our part, be liable or responsible for any loss, costs, damages, or expenses incurred or sustained by anyone resulting from any interpretation made by any of our officers, agents or employees. These interpretations are also subject to our general terms and conditions set out in our current Price Schedule.

Comments

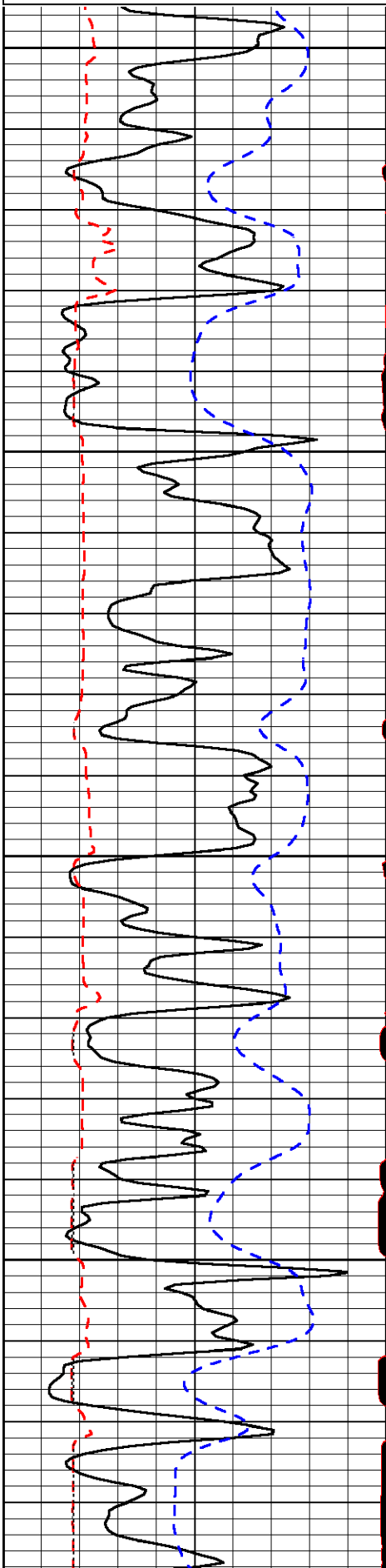
Thank you for using Log-Tech, Inc.
(785) 625-3858

Oakley S to Scott Lake rd, W to 1st right turn (Scott Lake Drive), follow around lake to T (Kansas rd), N 1 1/2 to Bison Rd, Right through gate about 2 mi. to corral, right 1/4, right to rig

Database File: britohd.db
 Dataset Pathname: dil/brito2in
 Presentation Format: micro
 Dataset Creation: Wed Jun 09 12:04:10 2010
 Charted by: Depth in Feet scaled 1:240

0	Gamma Ray	150
6	MCAL (GAPI)	16
2.875	Mud Cake (GAPI)	7.875
-200	SP	0

0	Micro Inverse 1 X 1	40
0	Micro Normal 2"	40
10000	Line Weight	0
		LSPD

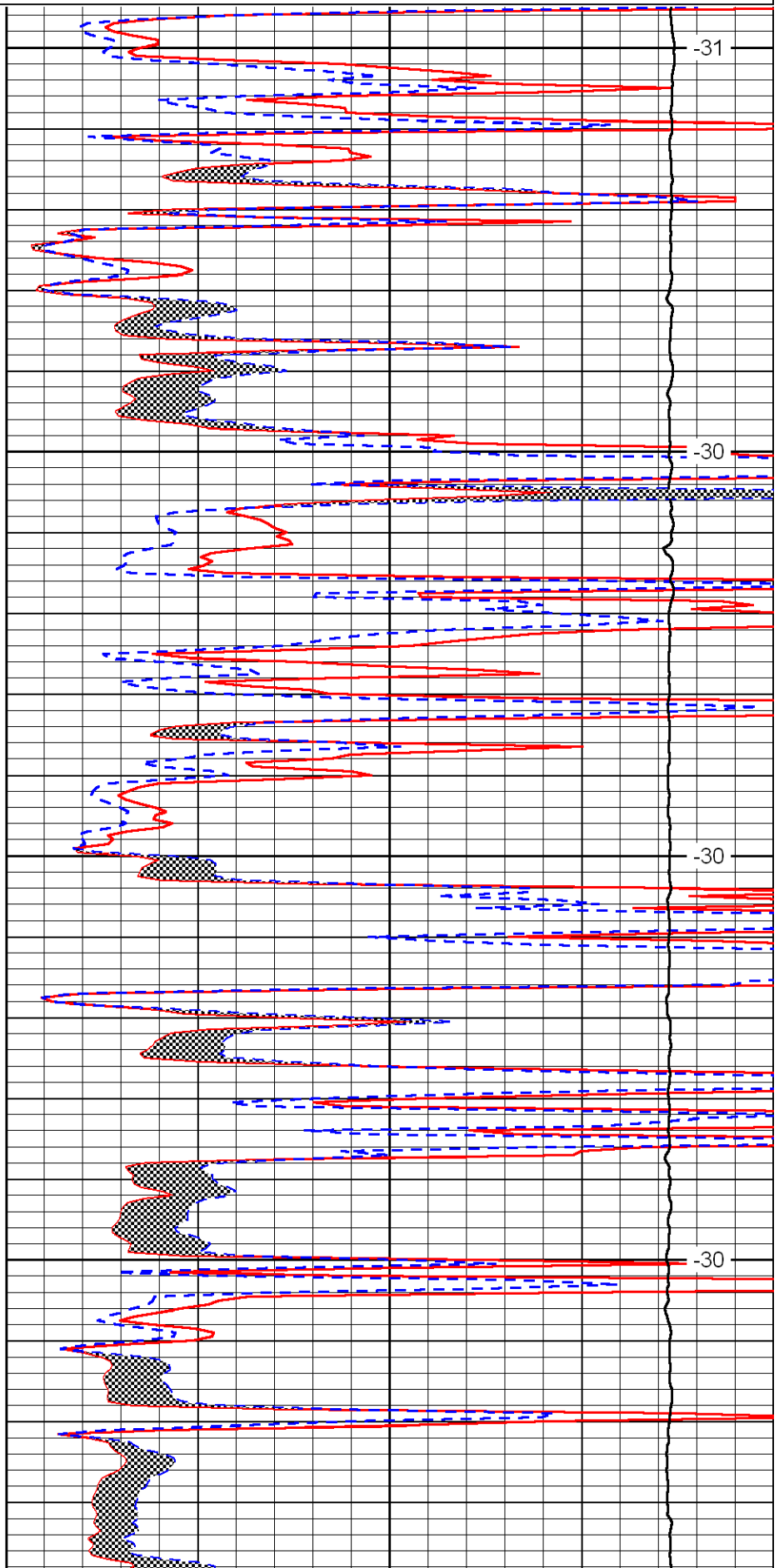


3400

3450

3500

3550

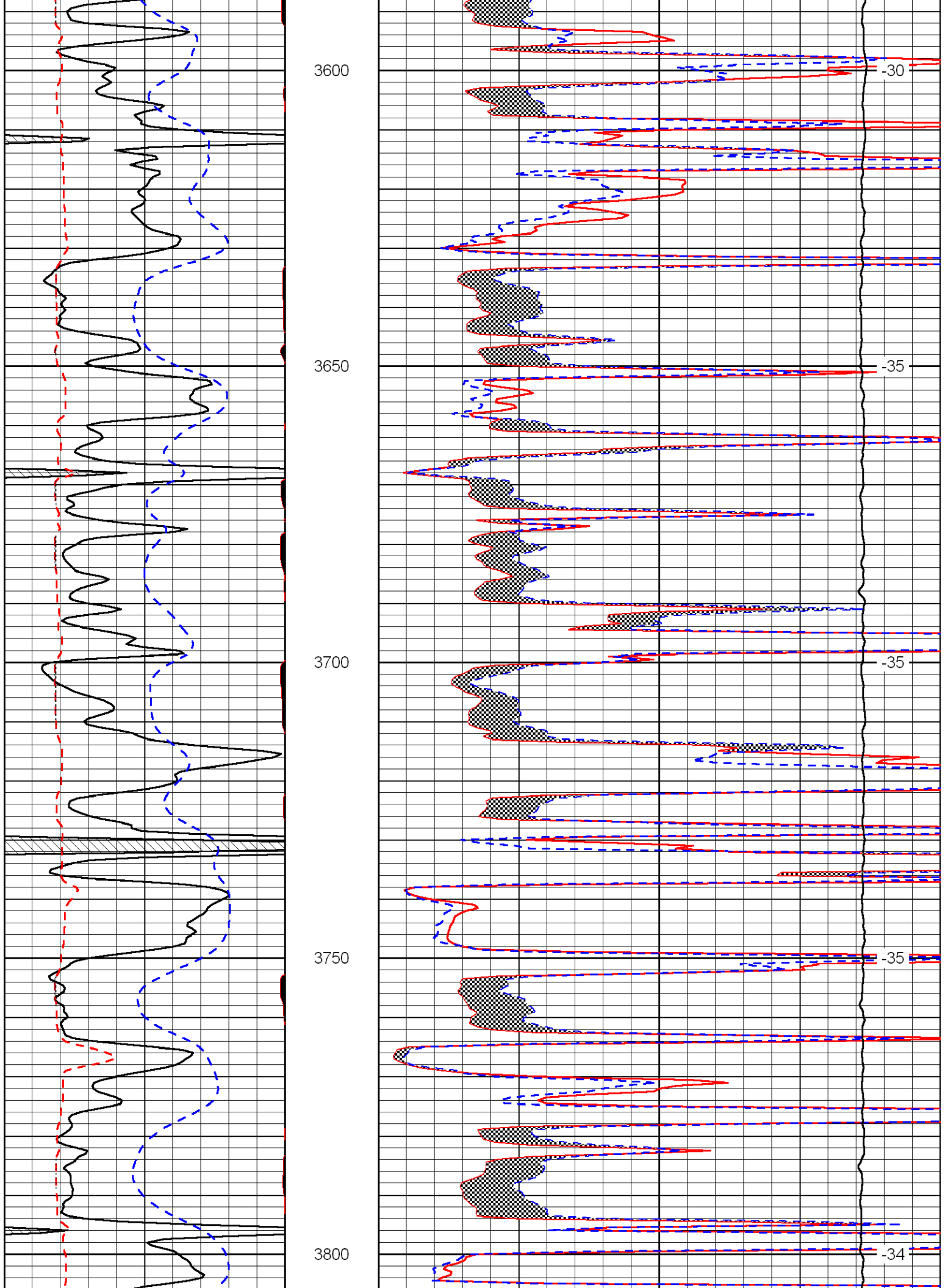


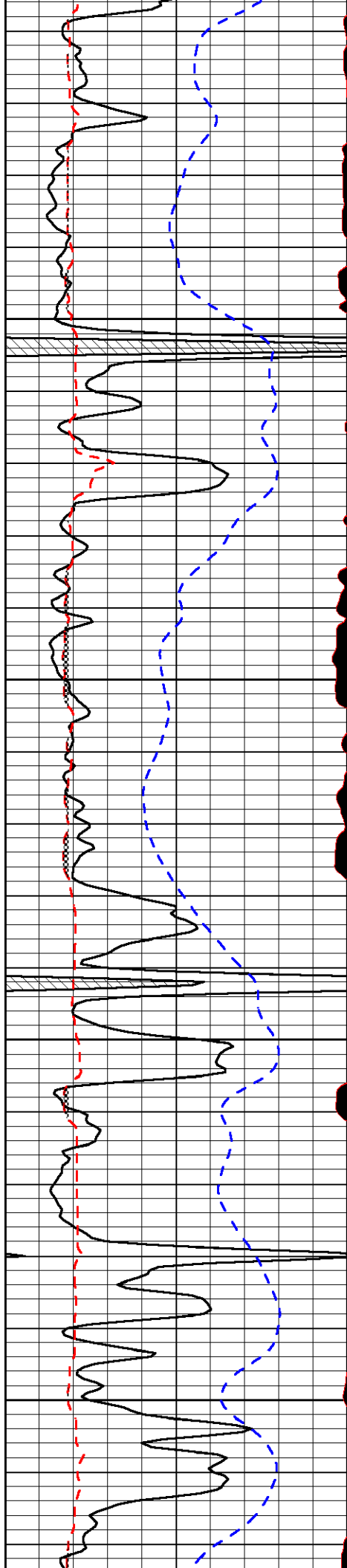
-31

-30

-30

-30



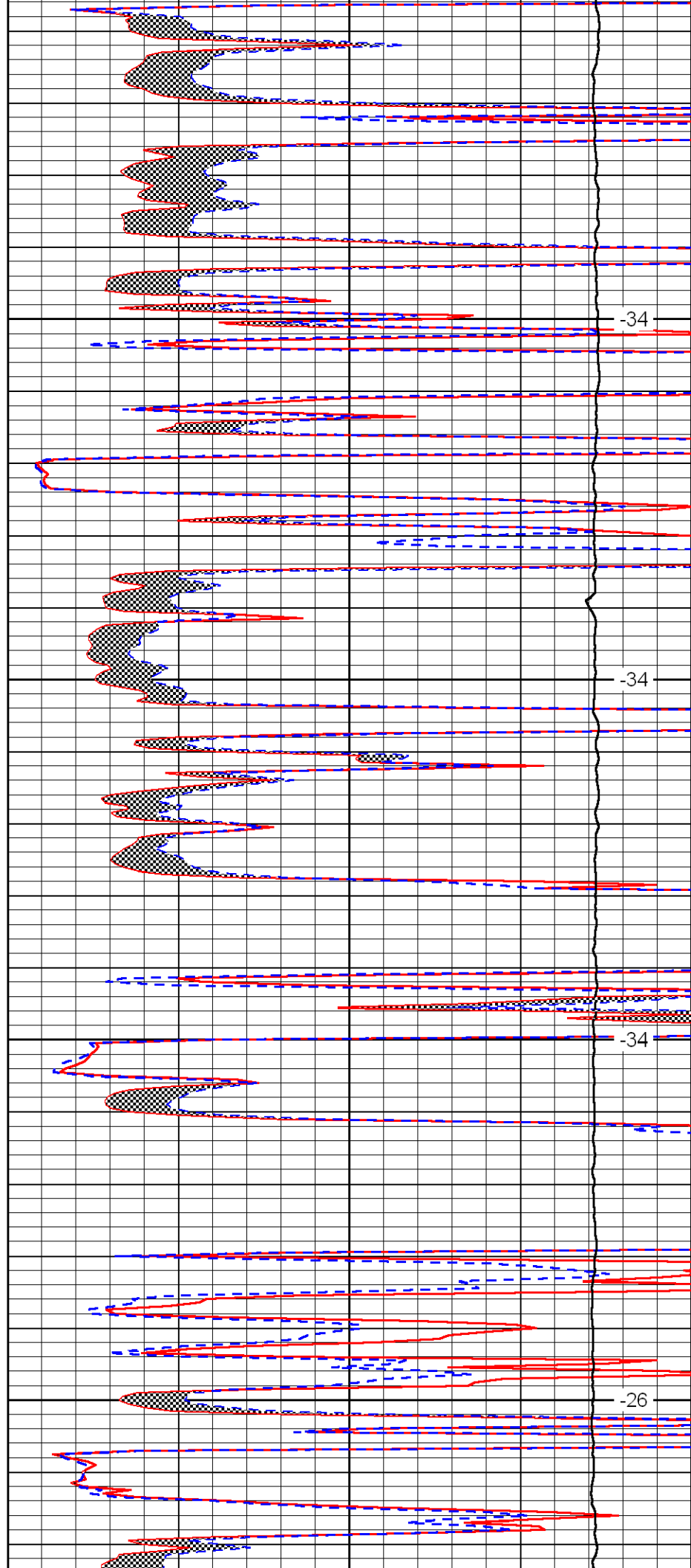


3850

3900

3950

4000

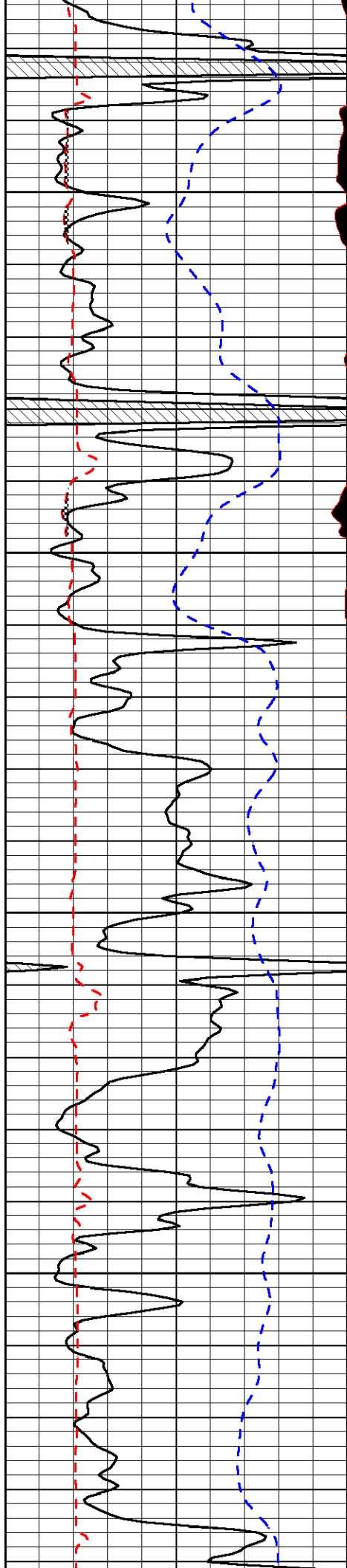


-34

-34

-34

-26

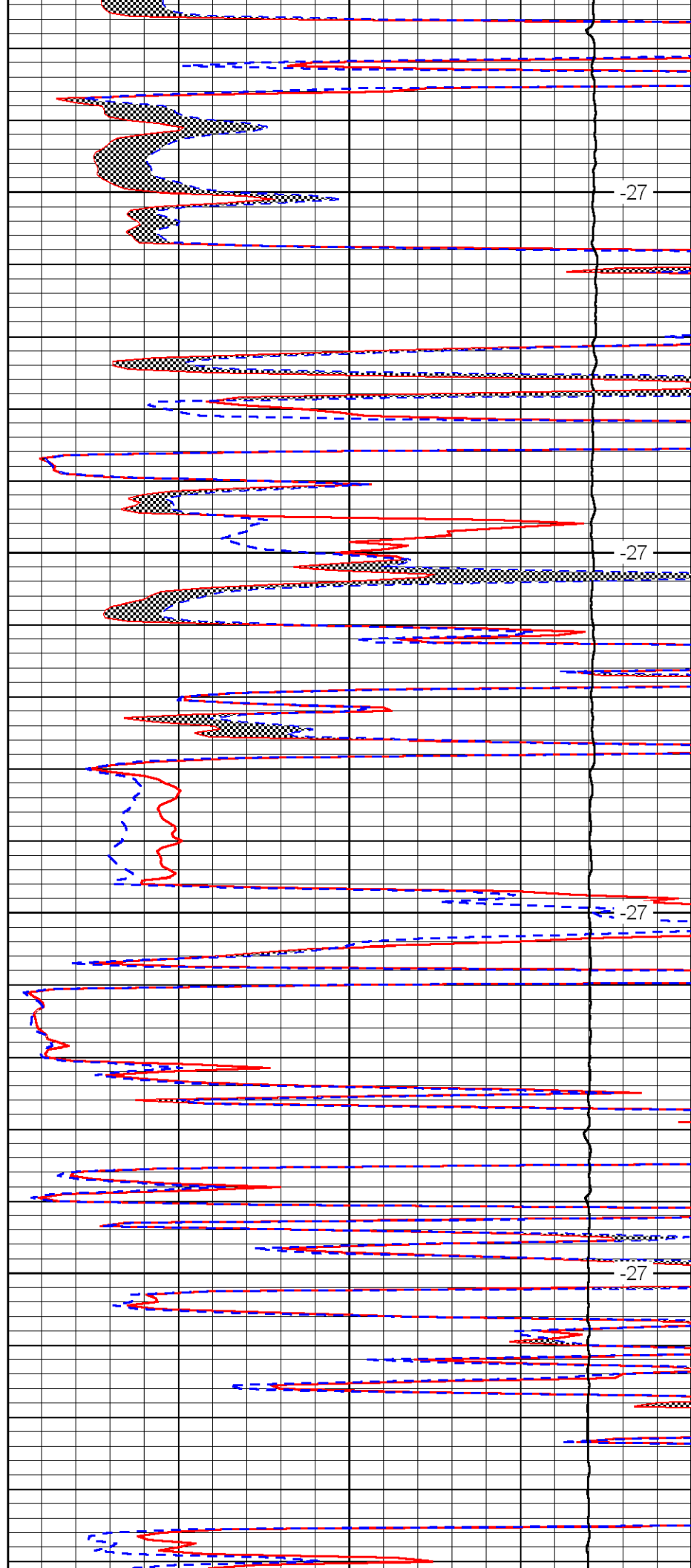


4050

4100

4150

4200

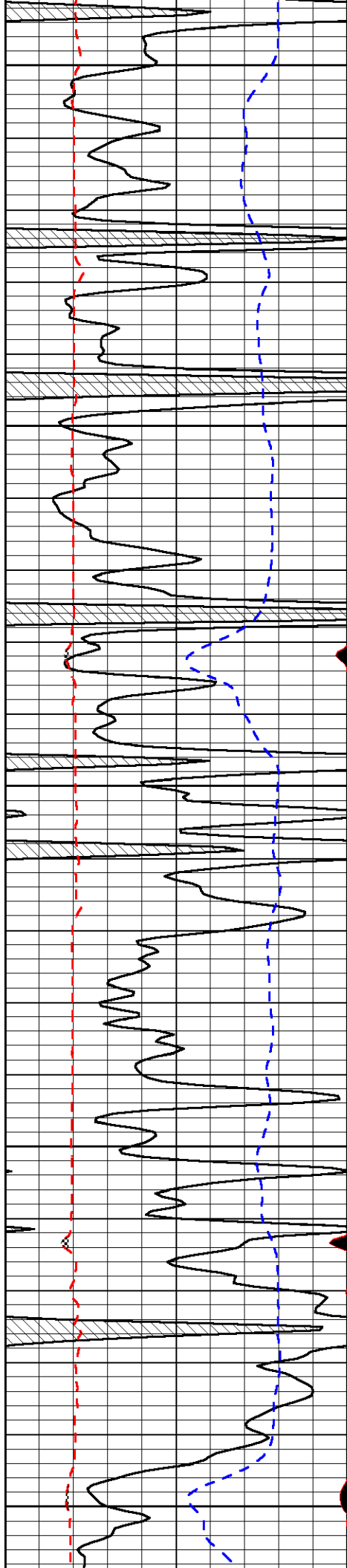


-27

-27

-27

-27



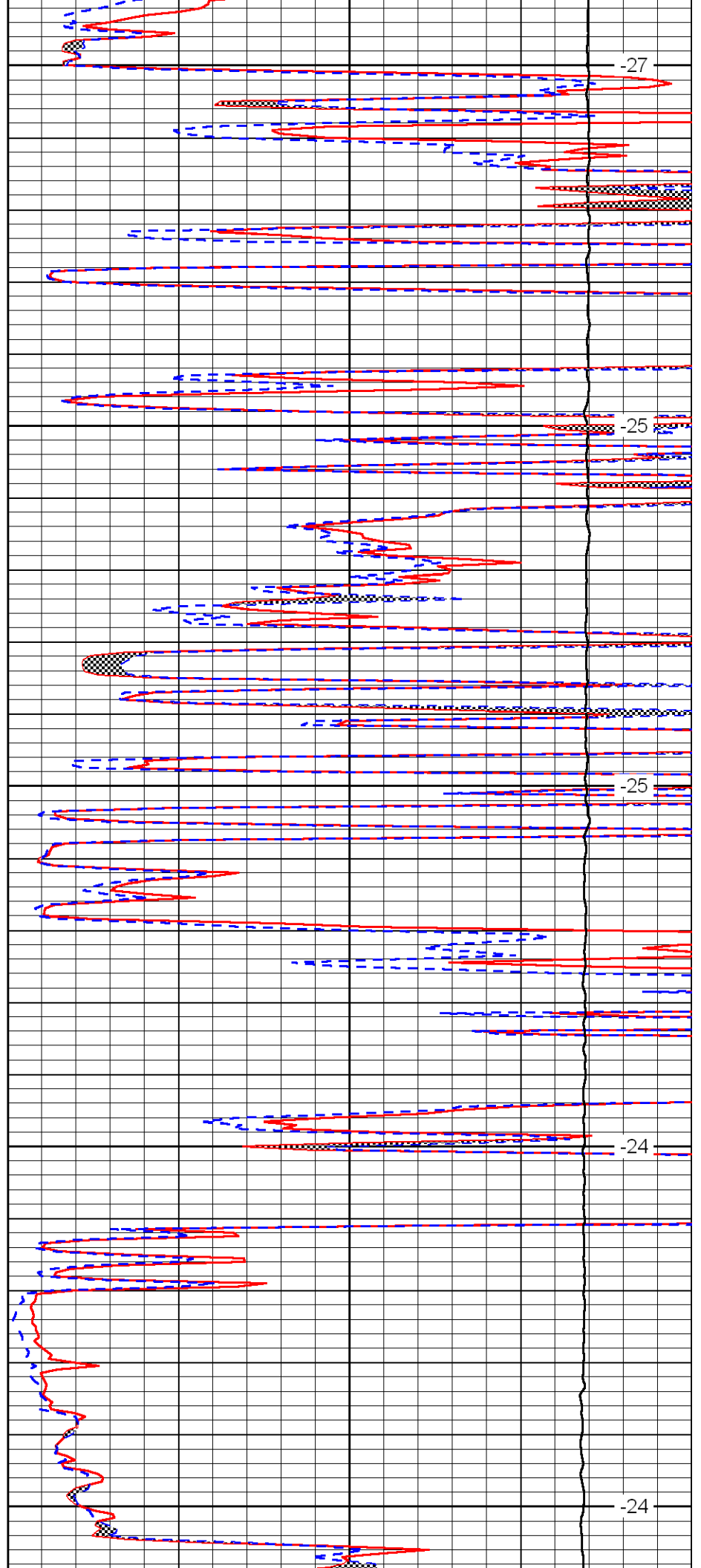
4250

4300

4350

4400

4450



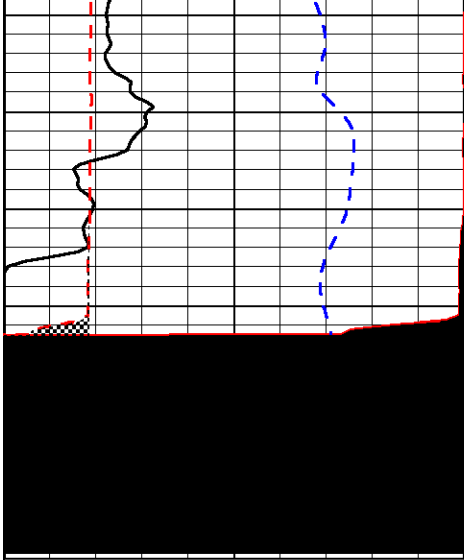
-27

-25

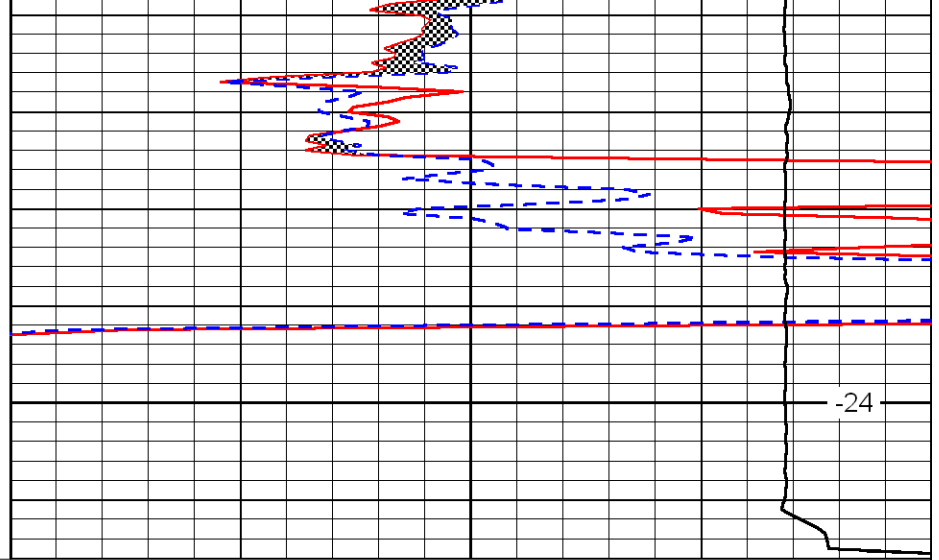
-25

-24

-24



4500



-24

0	Gamma Ray	150
6	MCAL (GAPI)	16
2.875	Mud Cake (GAPI)	7.875
-200	SP	0

0	Micro Inverse 1 X 1	40
0	Micro Normal 2''	40
10000	Line Weight	0

LSPD