



Dual Induction Log

DIGITAL LOG (785) 625-3858

API No.	15-109-20,914-00-00	
Company	Brito Oil Company, Inc.	
Well	Fairleigh 'A' No. 1-19	
Field	Wildcat	
County	Logan	State Kansas
Location	1700' FSL & 540' FEL	
Sec: 19	Twp: 15 S	Rge: 32 W
Permanent Datum	Ground Level	Elevation 2798
Log Measured From	Kelly Bushing	5 Ft. Above Perm. Datum
Drilling Measured From	Kelly Bushing	K.B. 2803
		D.F. 2798
		G.L. 2798

Date	6/09/2010
Run Number	One
Depth Driller	4509
Depth Logger	4511
Bottom Logged Interval	4510
Top Log Interval	200
Casing Driller	8.625 @ 220
Casing Logger	220
Bit Size	7.875
Type Fluid in Hole	Chemical
Salinity, ppm CL	2,300
Density / Viscosity	8.9 67
pH / Fluid Loss	9.5 8.0
Source of Sample	Flowline
Rm @ Meas. Temp	.70 @ 75
Rmf @ Meas. Temp	.53 @ 75
Rmc @ Meas. Temp	.95 @ 75
Source of Rmf / Rmc	Charts
Rm @ BHT	.43 @ 123
Operating Rig Time	5 Hours
Max Rec. Temp. F	123
Equipment Number	4
Location	Hays
Recorded By	K. Bange
Witnessed By	Paul Gunzelman

<<< Fold Here >>>

All interpretations are opinions based on inferences from electrical or other measurements and we cannot and do not guarantee the accuracy or correctness of any interpretation, and we shall not, except in the case of gross or willful negligence on our part, be liable or responsible for any loss, costs, damages, or expenses incurred or sustained by anyone resulting from any interpretation made by any of our officers, agents or employees. These interpretations are also subject to our general terms and conditions set out in our current Price Schedule.

Comments

Thank you for using Log-Tech, Inc.
(785) 625-3858

Oakley S to Scott Lake rd, W to 1st right turn (Scott Lake Drive), follow around lake to T (Kansas rd), N 1 1/2 to Bison Rd, Right through gate about 2 mi. to corral, right 1/4, right to rig

Database File: britohd.db
 Dataset Pathname: dil/brito2in
 Presentation Format: dil2in
 Dataset Creation: Wed Jun 09 12:04:10 2010
 Charted by: Depth in Feet scaled 1:600

0 Gamma Ray 150
-200 SP 0

0 Shallow Resistivity 50
0 Deep Resistivity 50

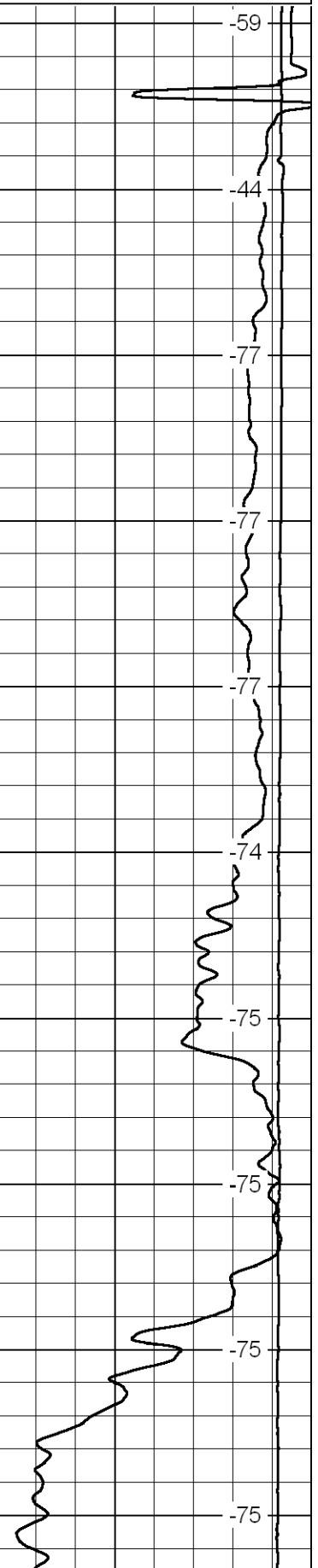
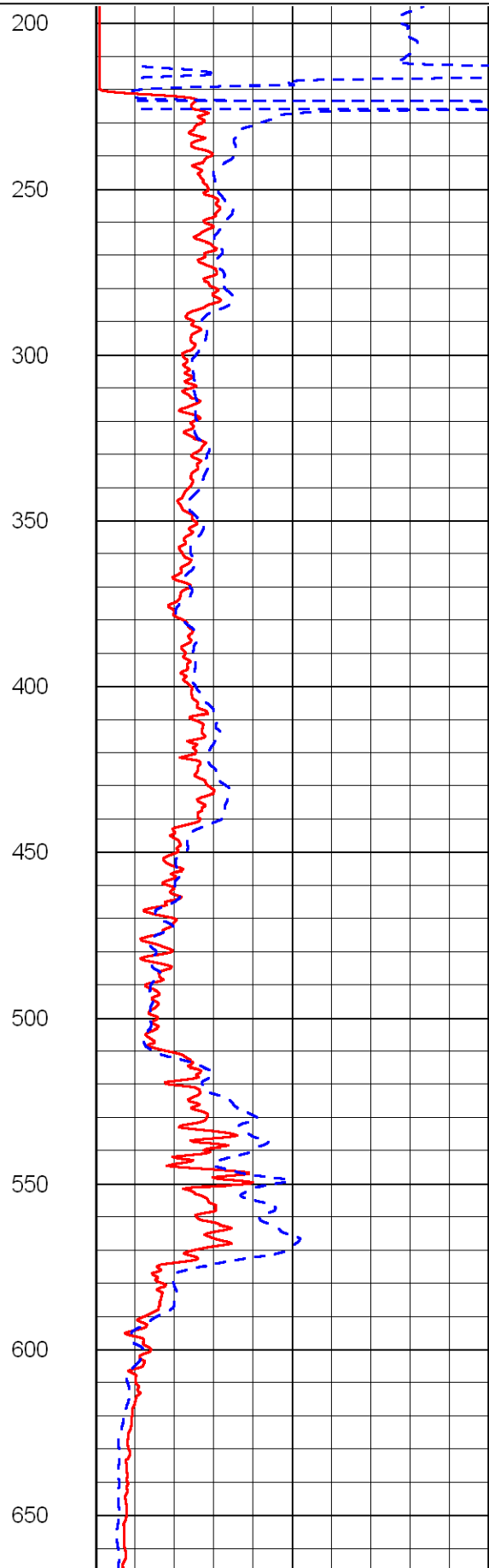
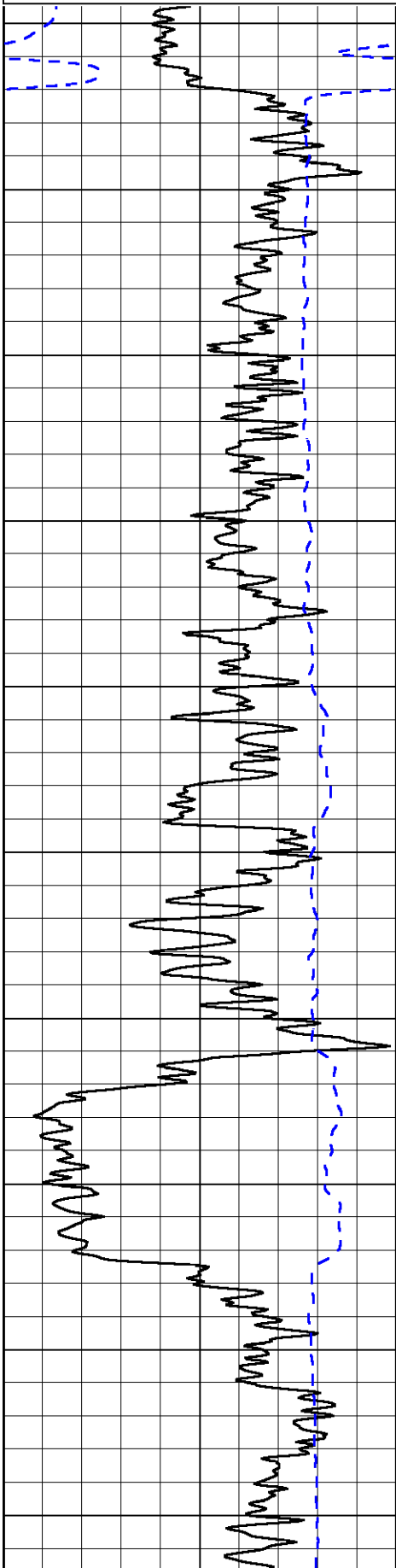
LSPD

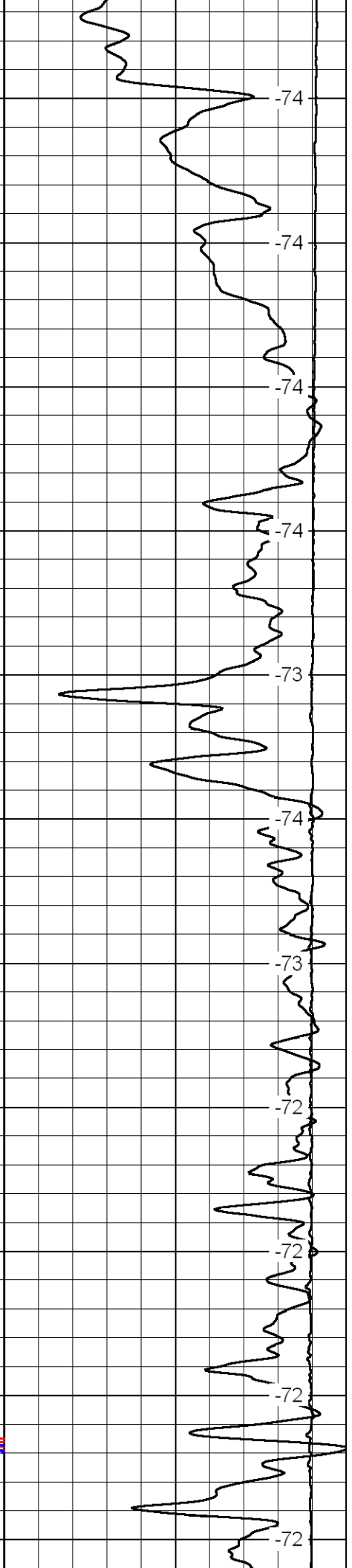
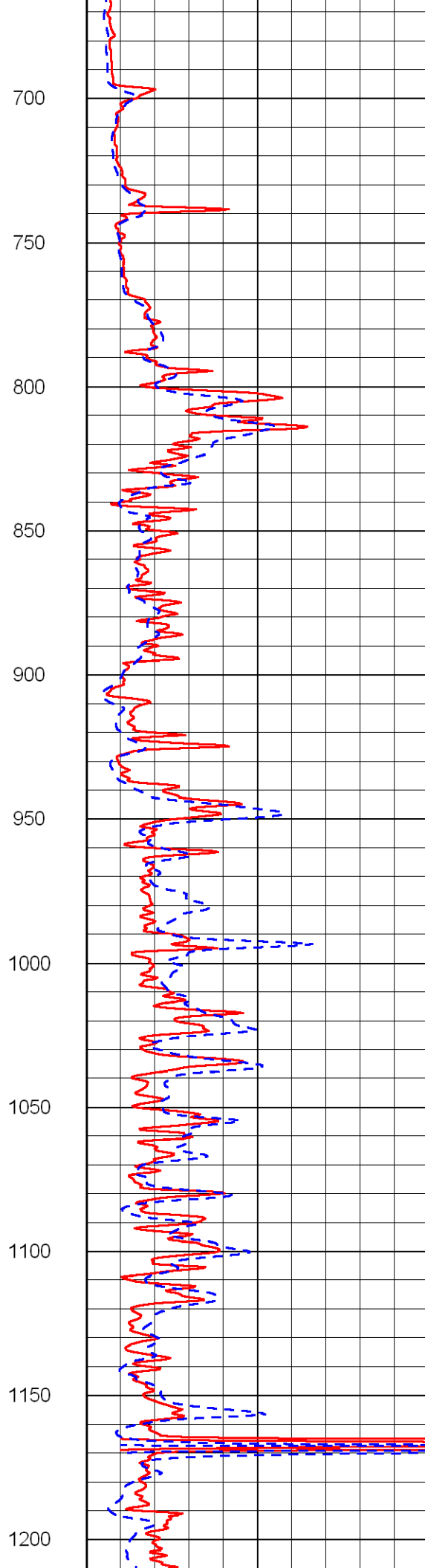
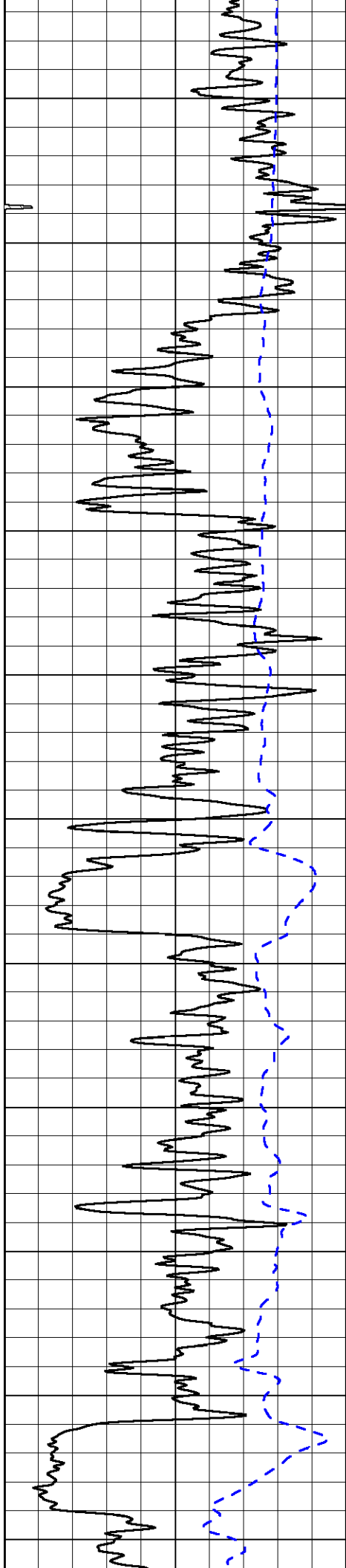
1000 Conductivity 0

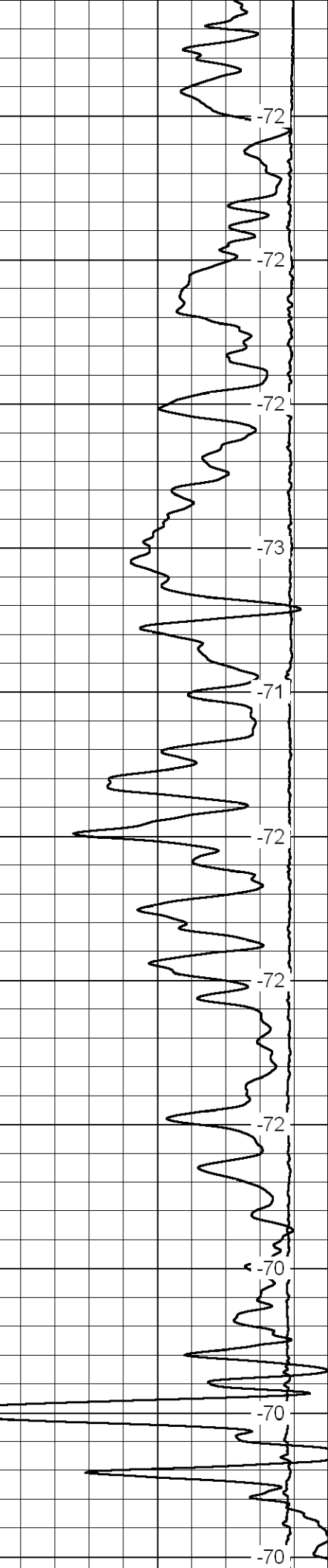
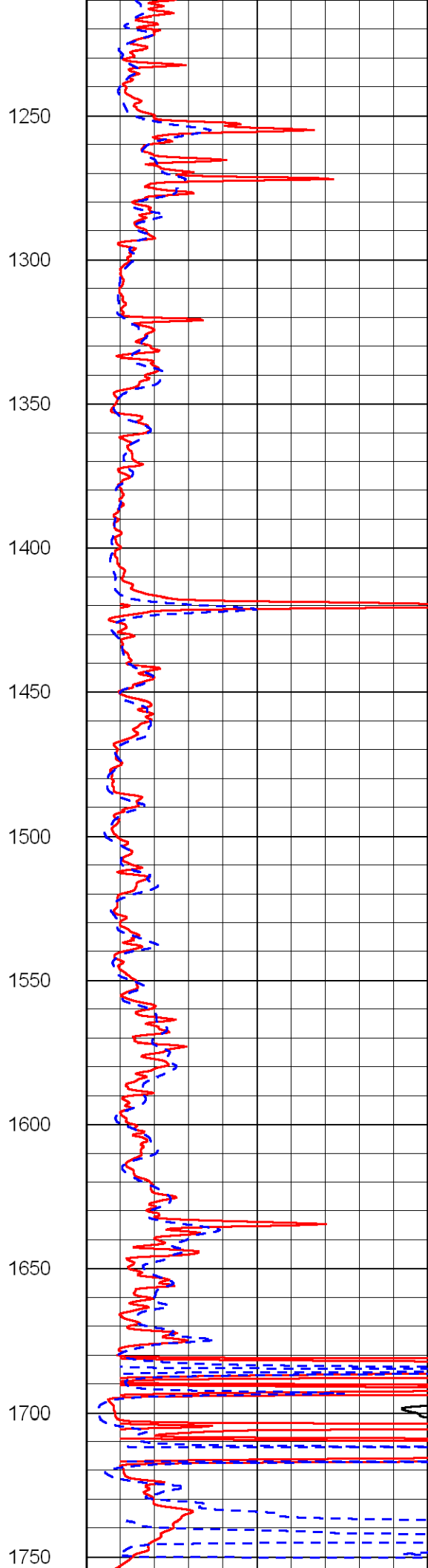
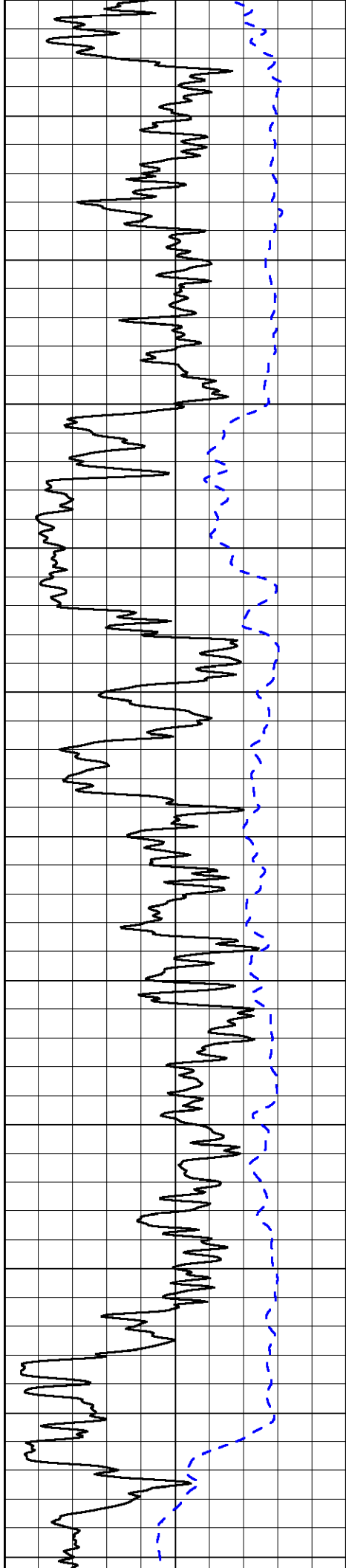
15000 Line Tension 0

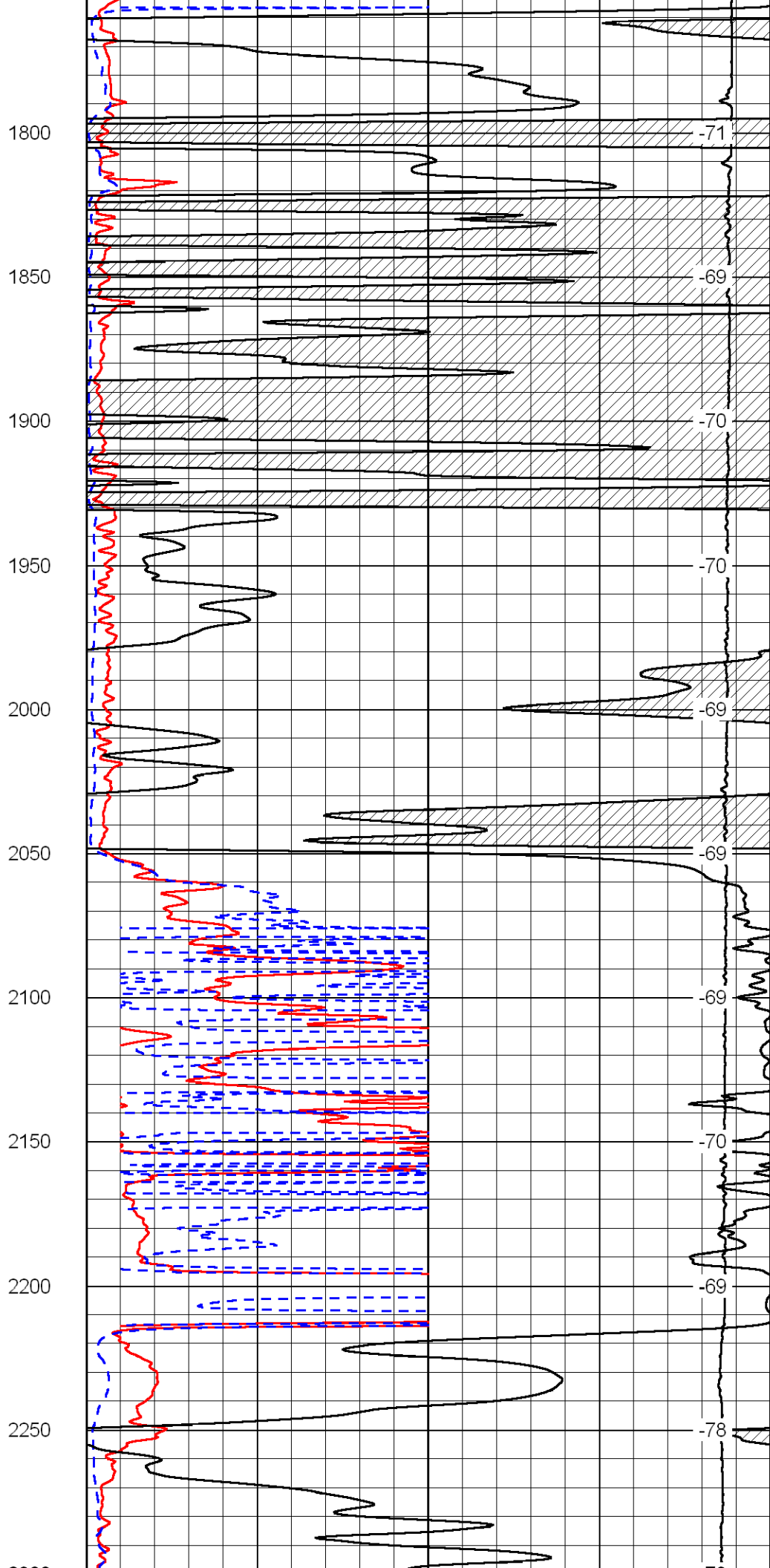
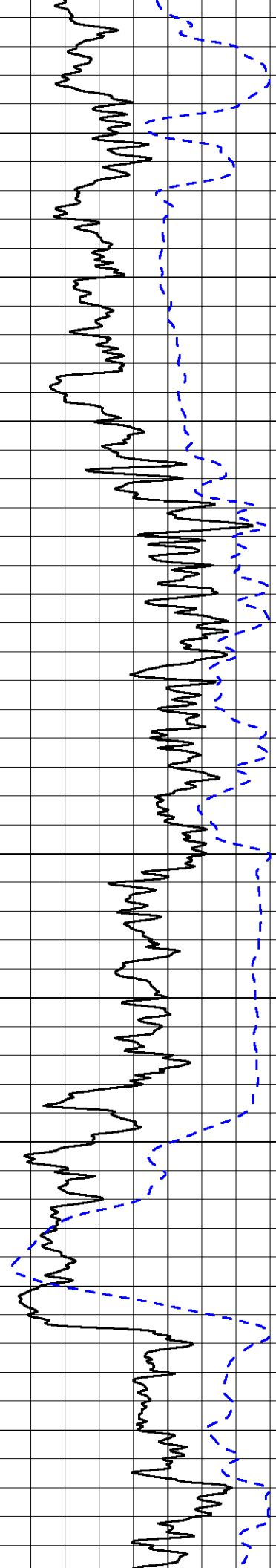
50 Shallow Resistivity 500

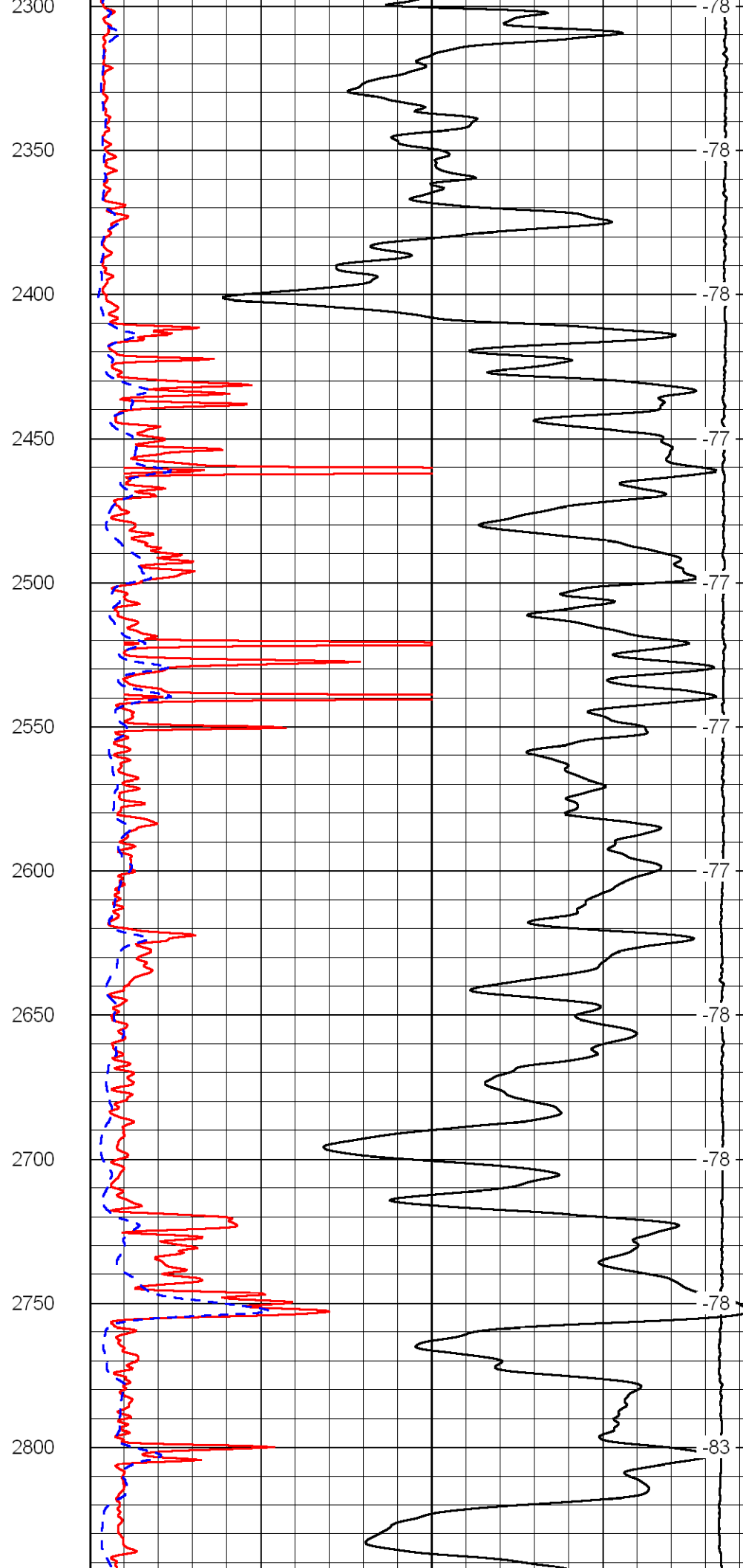
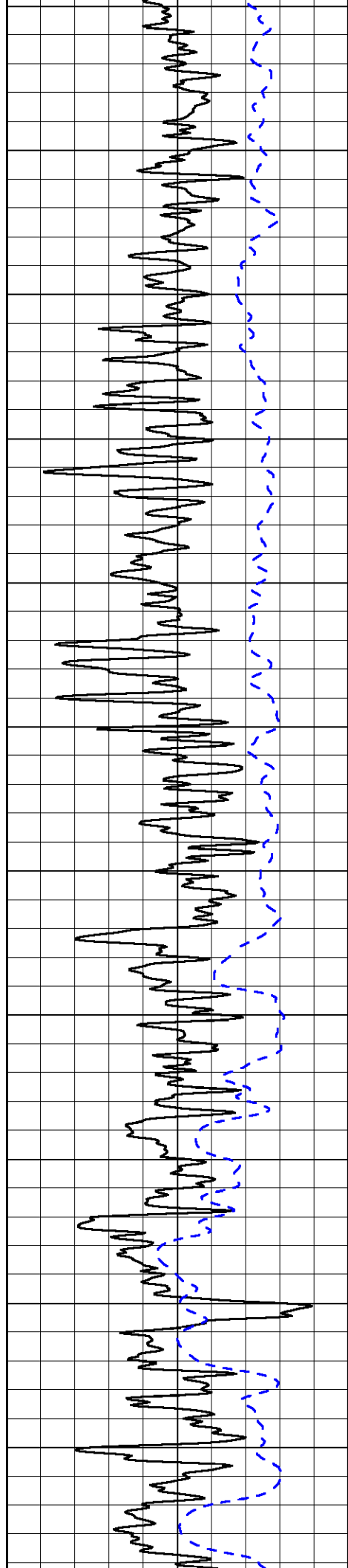
50 Deep Resistivity 500

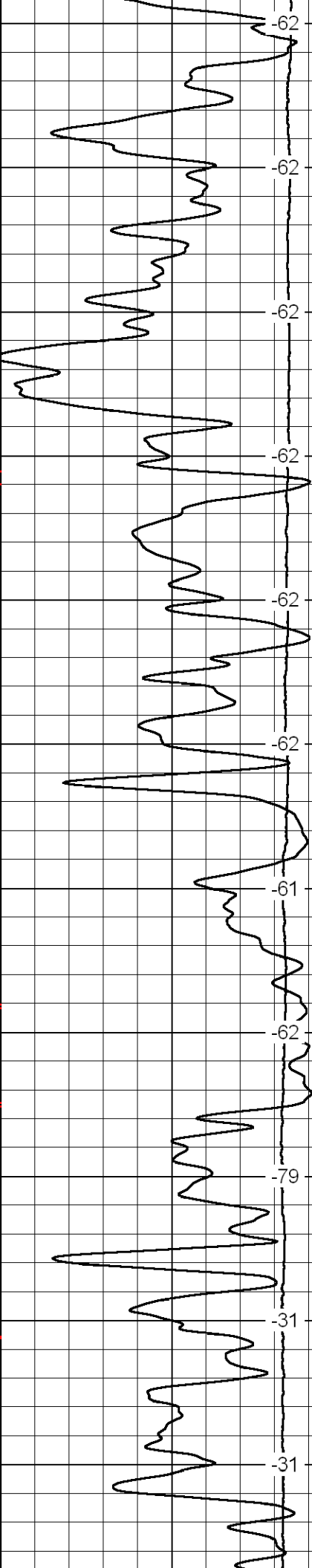
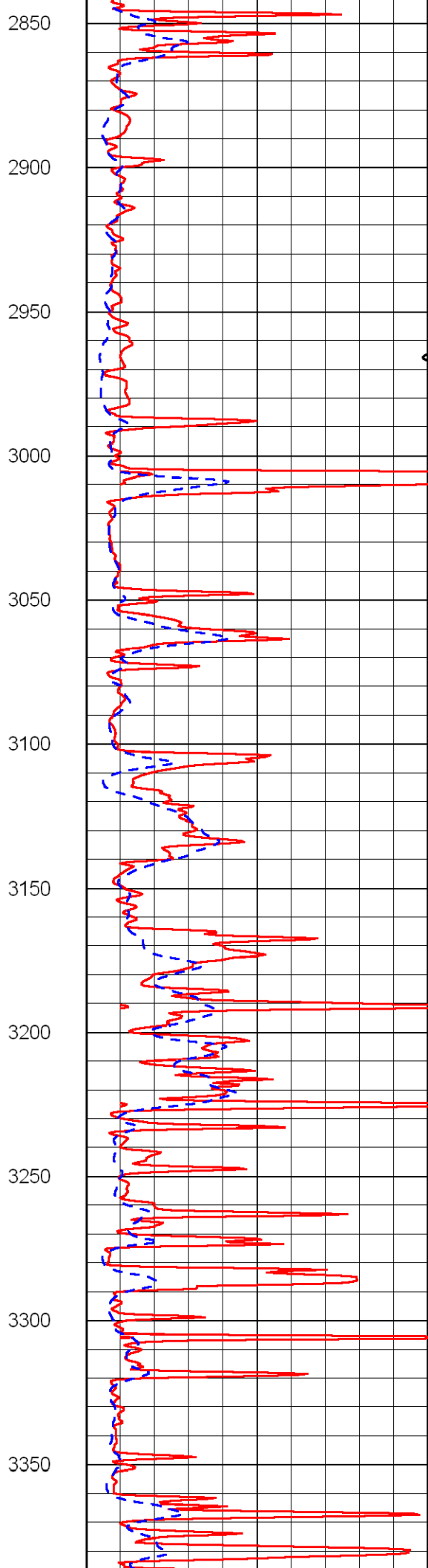
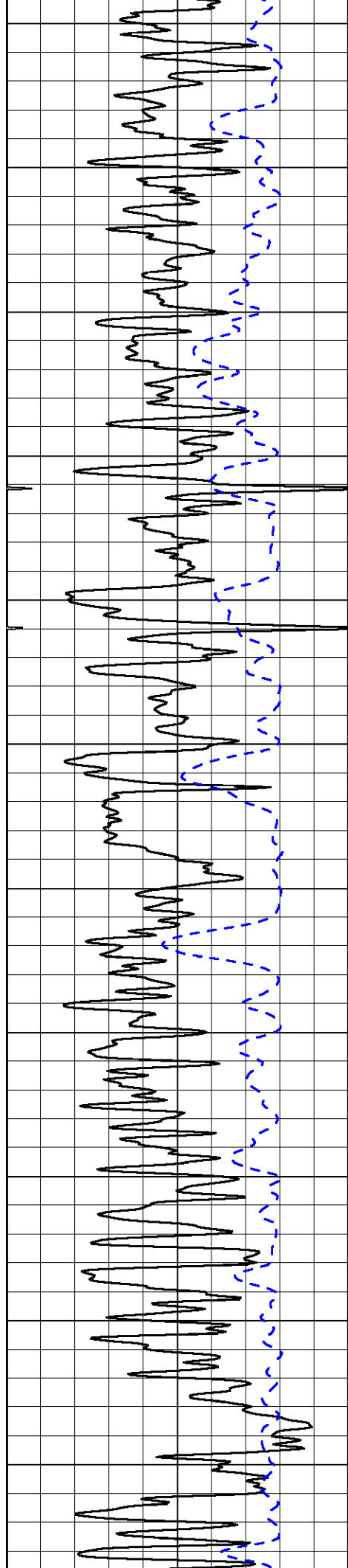


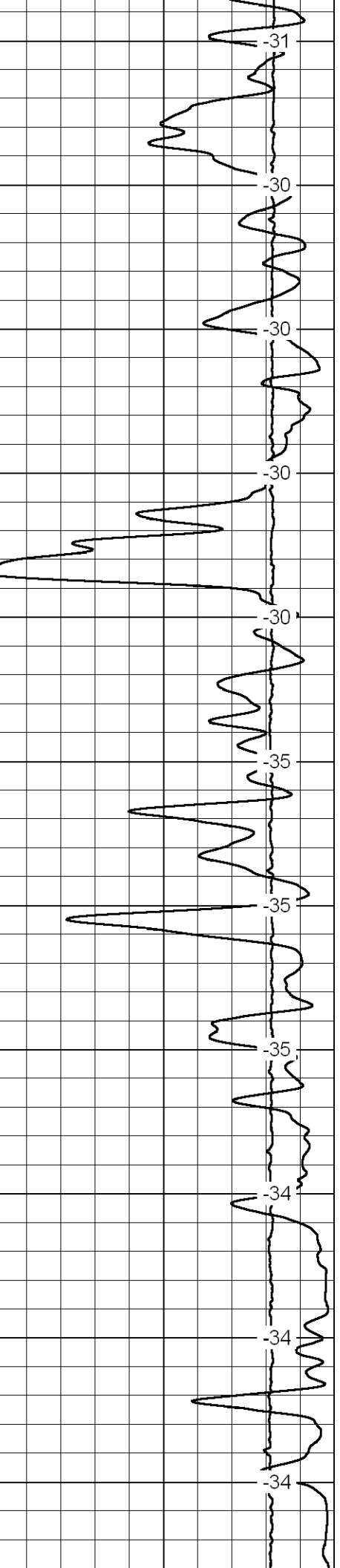
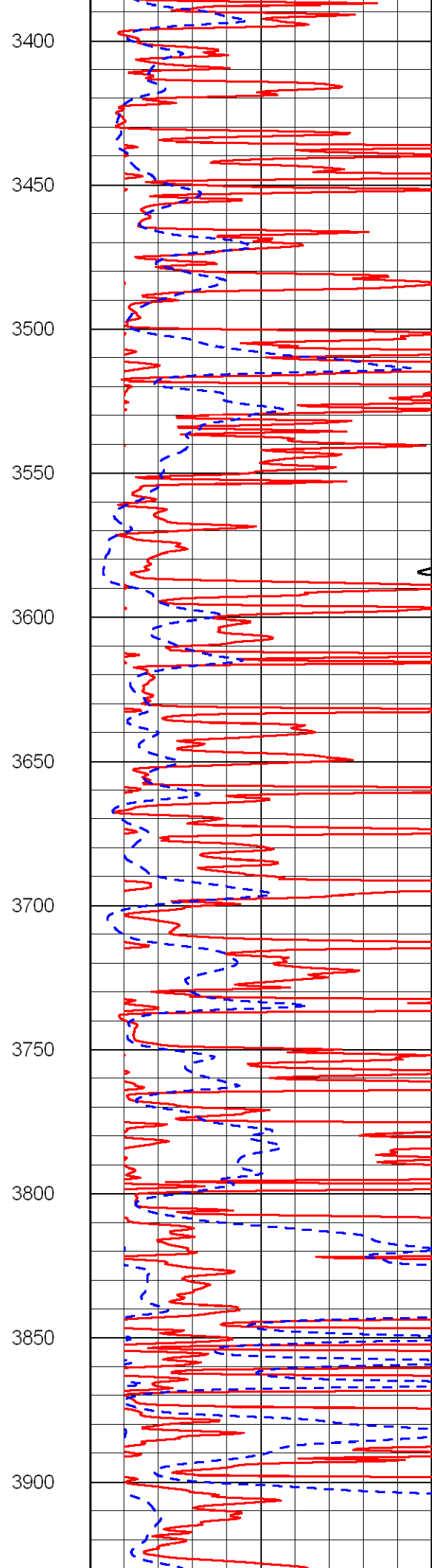
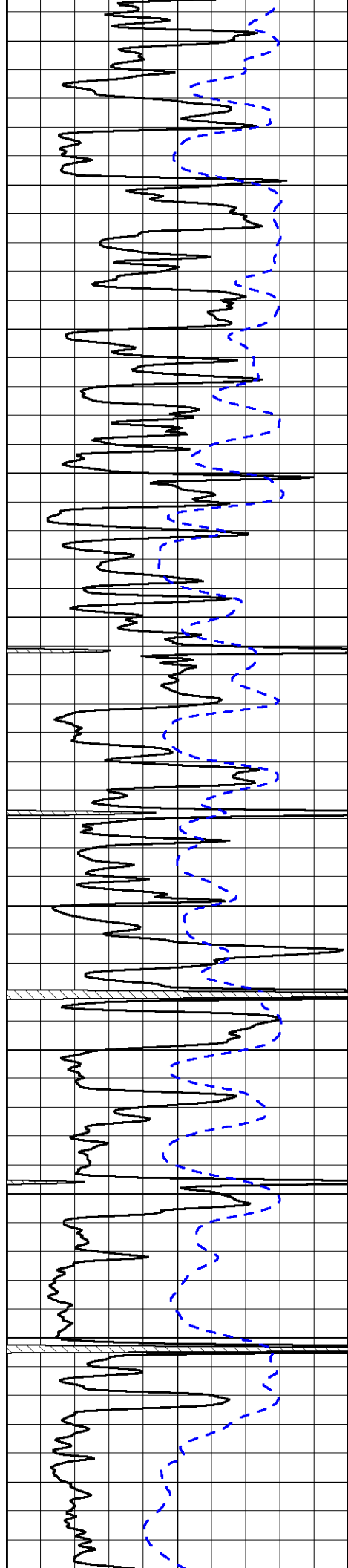


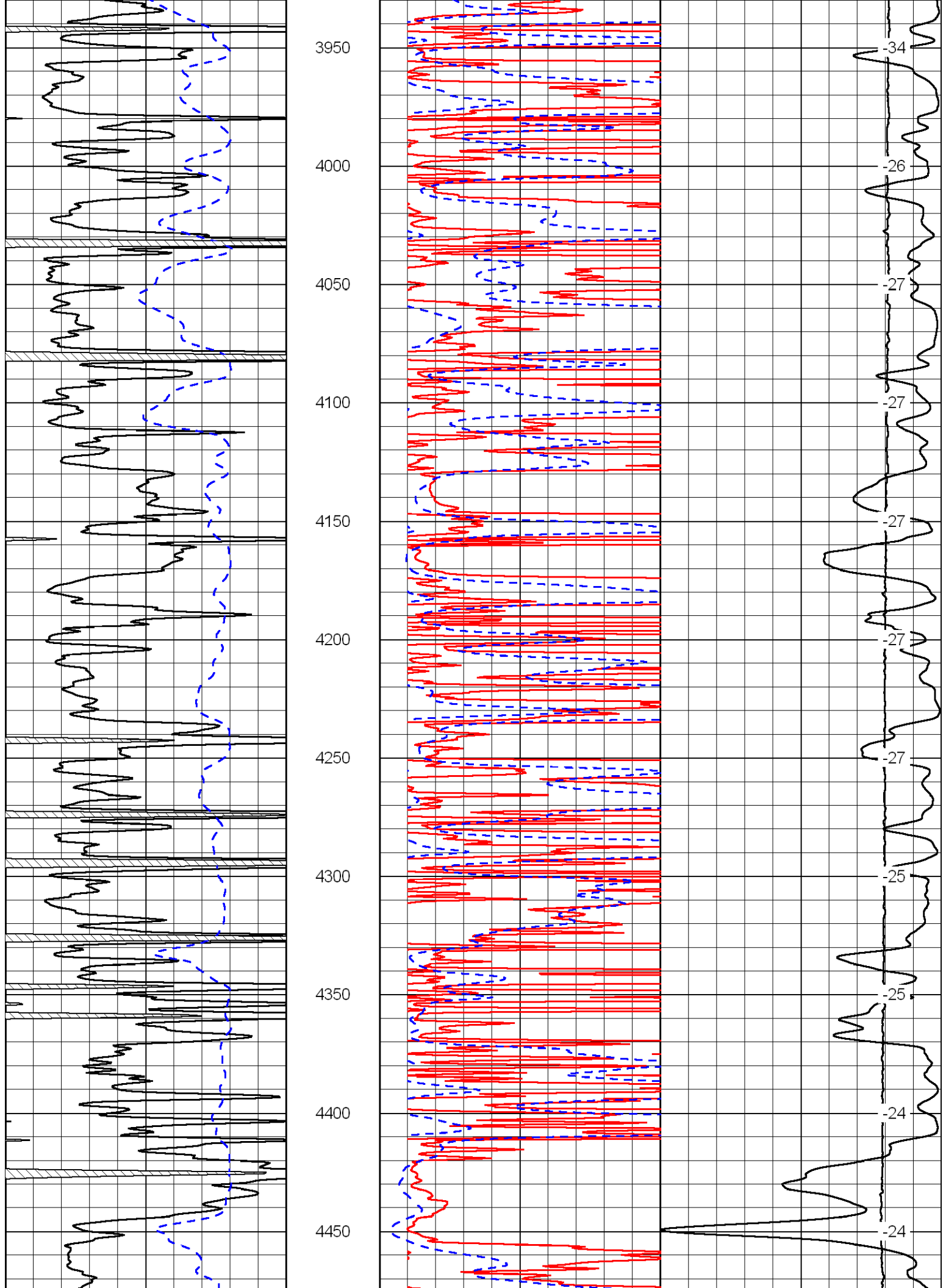


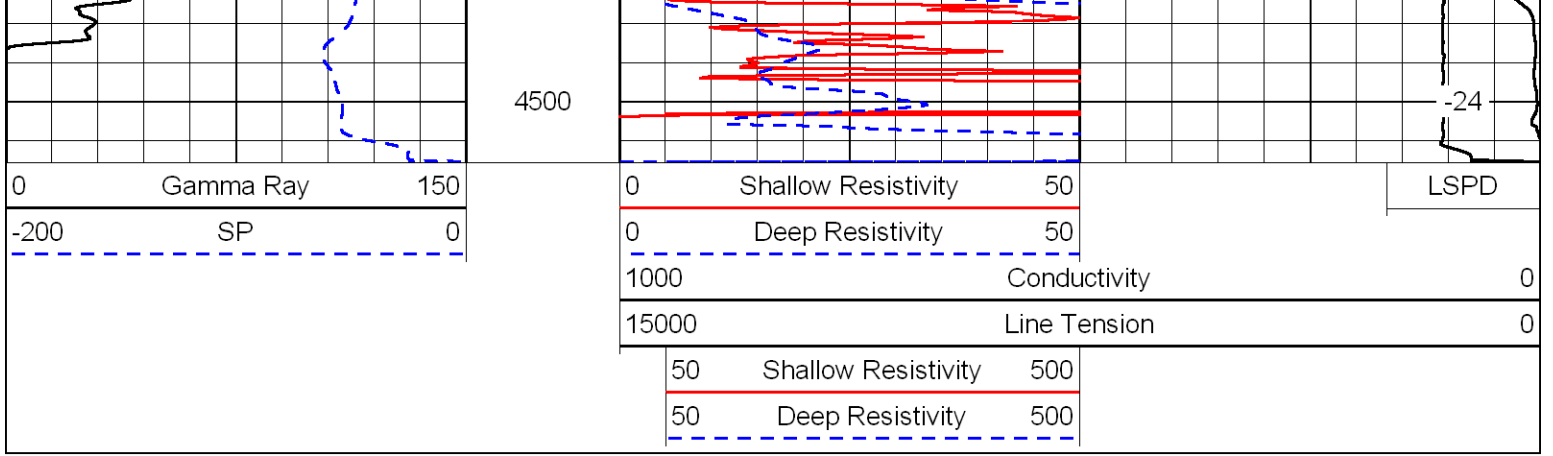




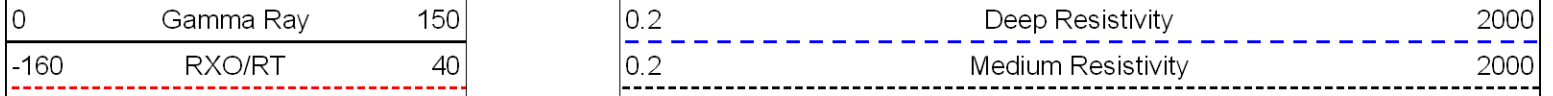
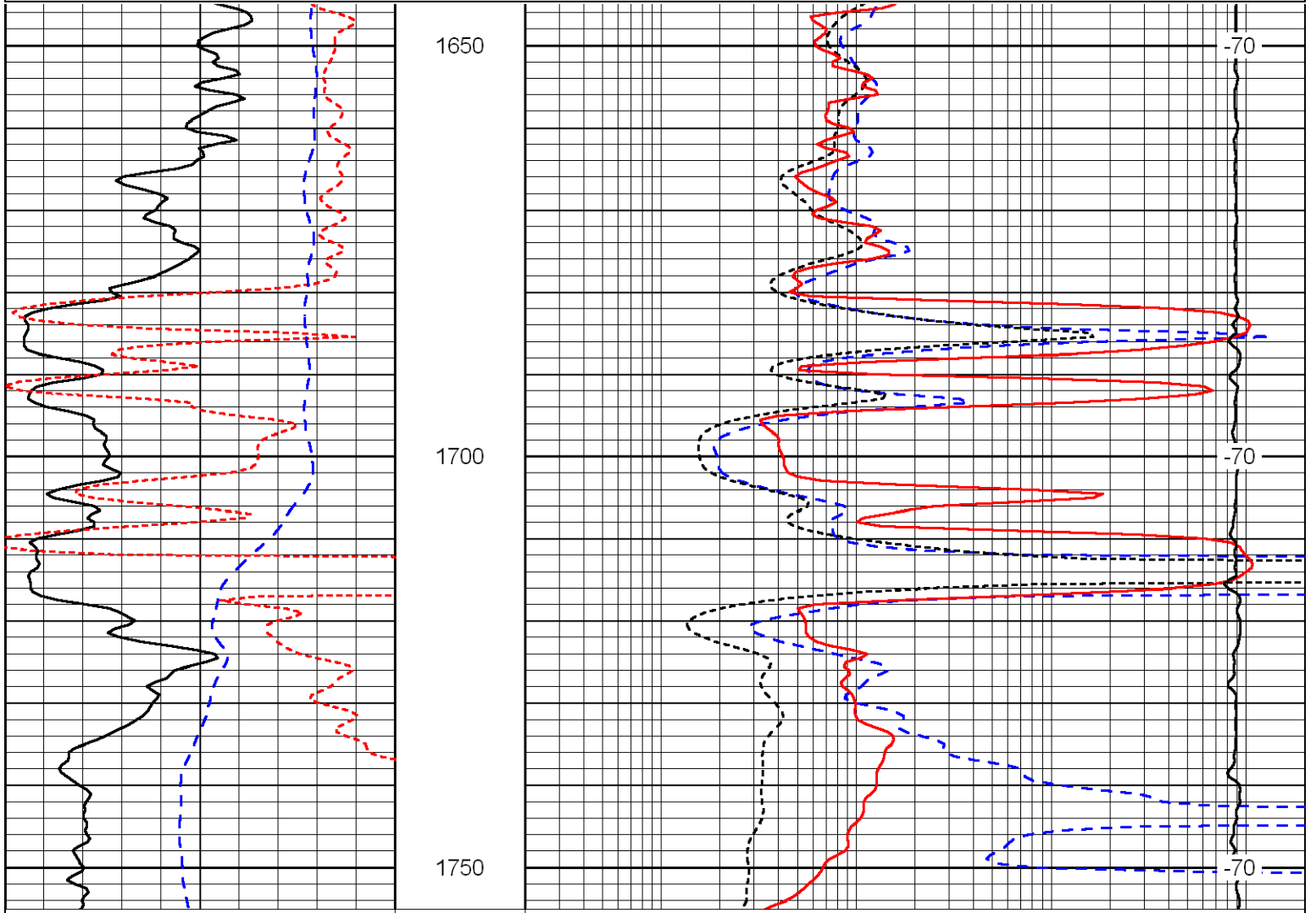
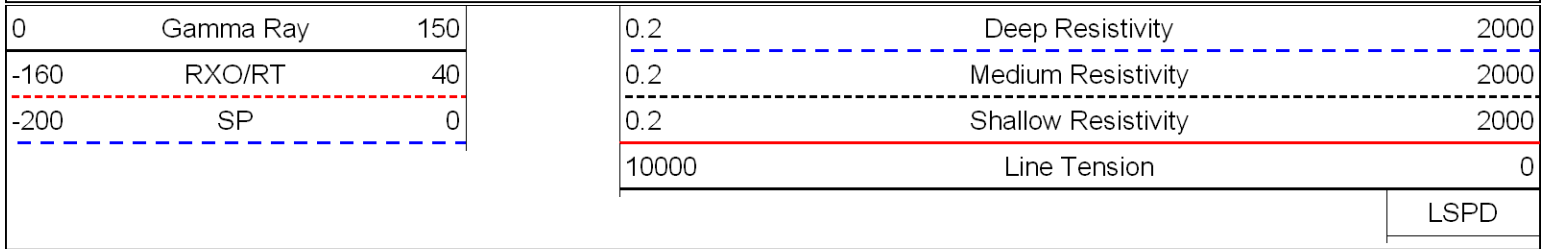








Database File: britohd.db
 Dataset Pathname: dil/brito2in
 Presentation Format: dil
 Dataset Creation: Wed Jun 09 12:04:10 2010
 Charted by: Depth in Feet scaled 1:240



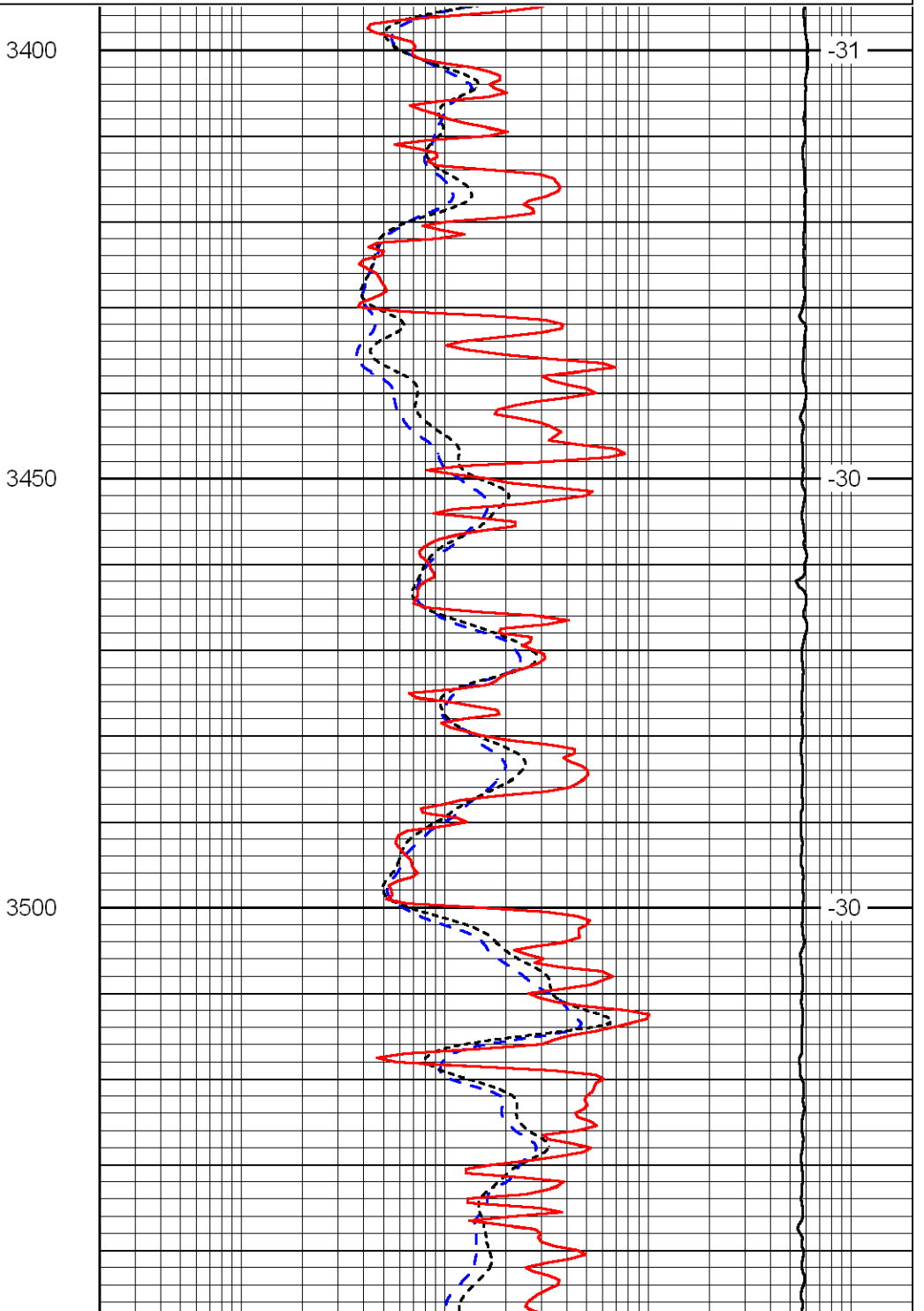
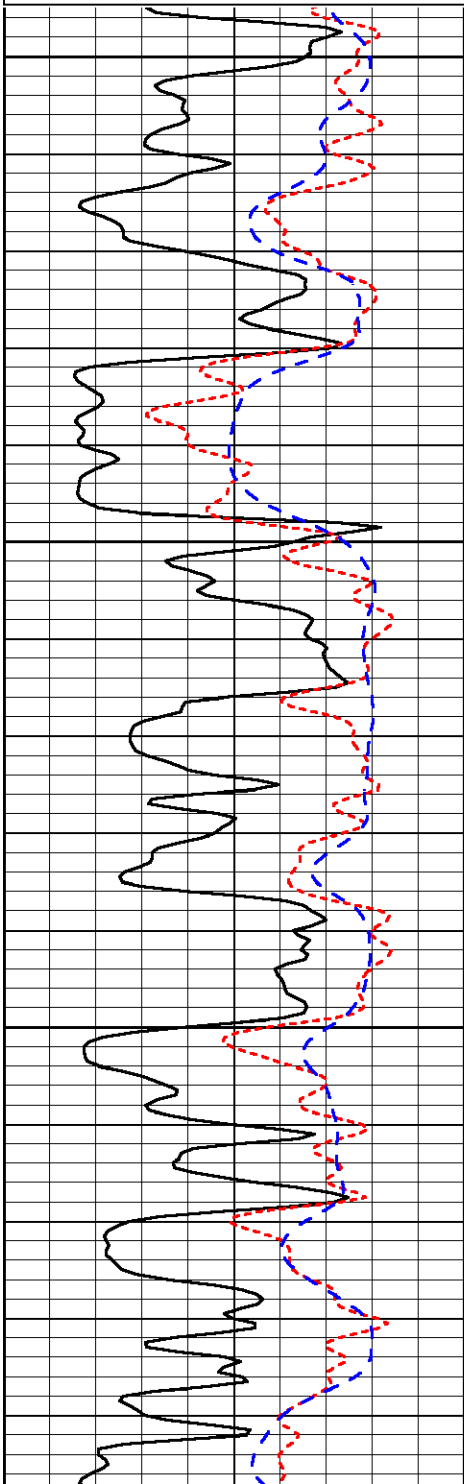
-200	SP	0
------	----	---

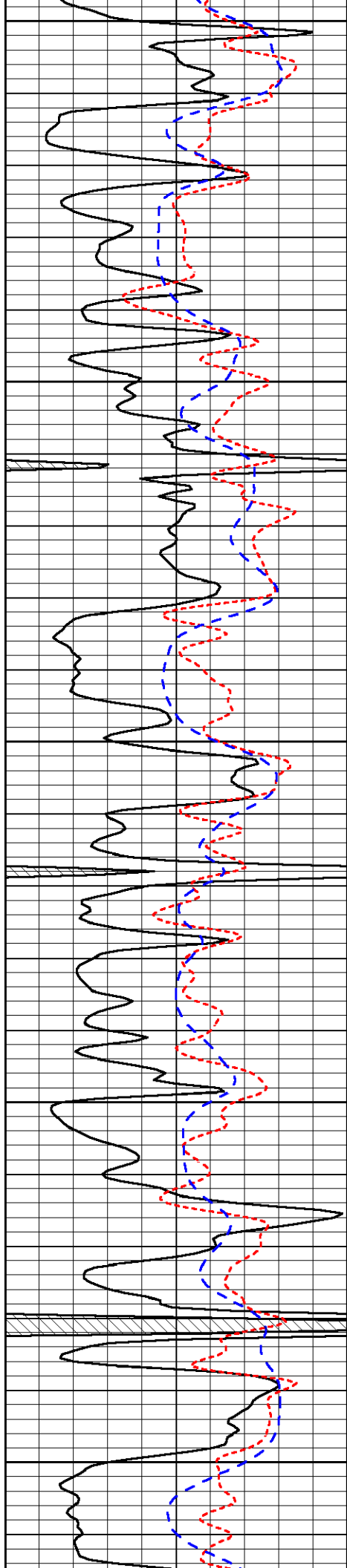
0.2	Shallow Resistivity	2000
10000	Line Tension	0
		LSPD

Database File: britohd.db
 Dataset Pathname: dil/brito2in
 Presentation Format: dil
 Dataset Creation: Wed Jun 09 12:04:10 2010
 Charted by: Depth in Feet scaled 1:240

0	Gamma Ray	150
-160	RXO/RT	40
-200	SP	0

0.2	Deep Resistivity	2000
0.2	Medium Resistivity	2000
0.2	Shallow Resistivity	2000
10000	Line Tension	0
		LSPD





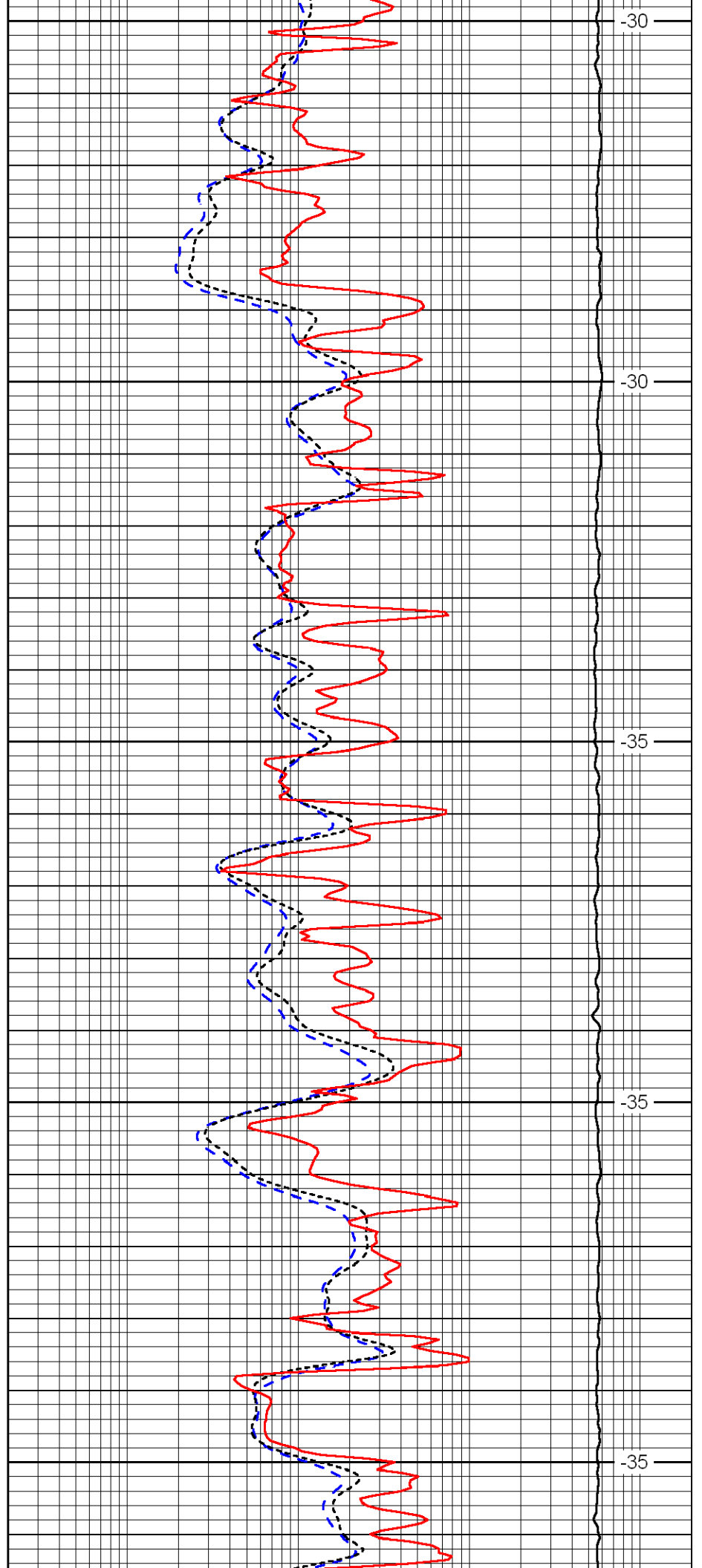
3550

3600

3650

3700

3750



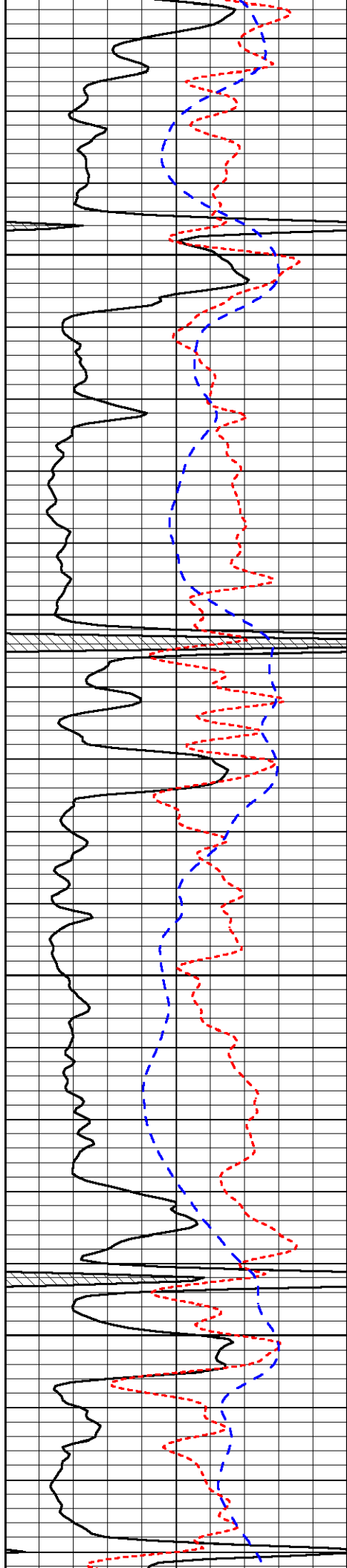
-30

-30

-35

-35

-35

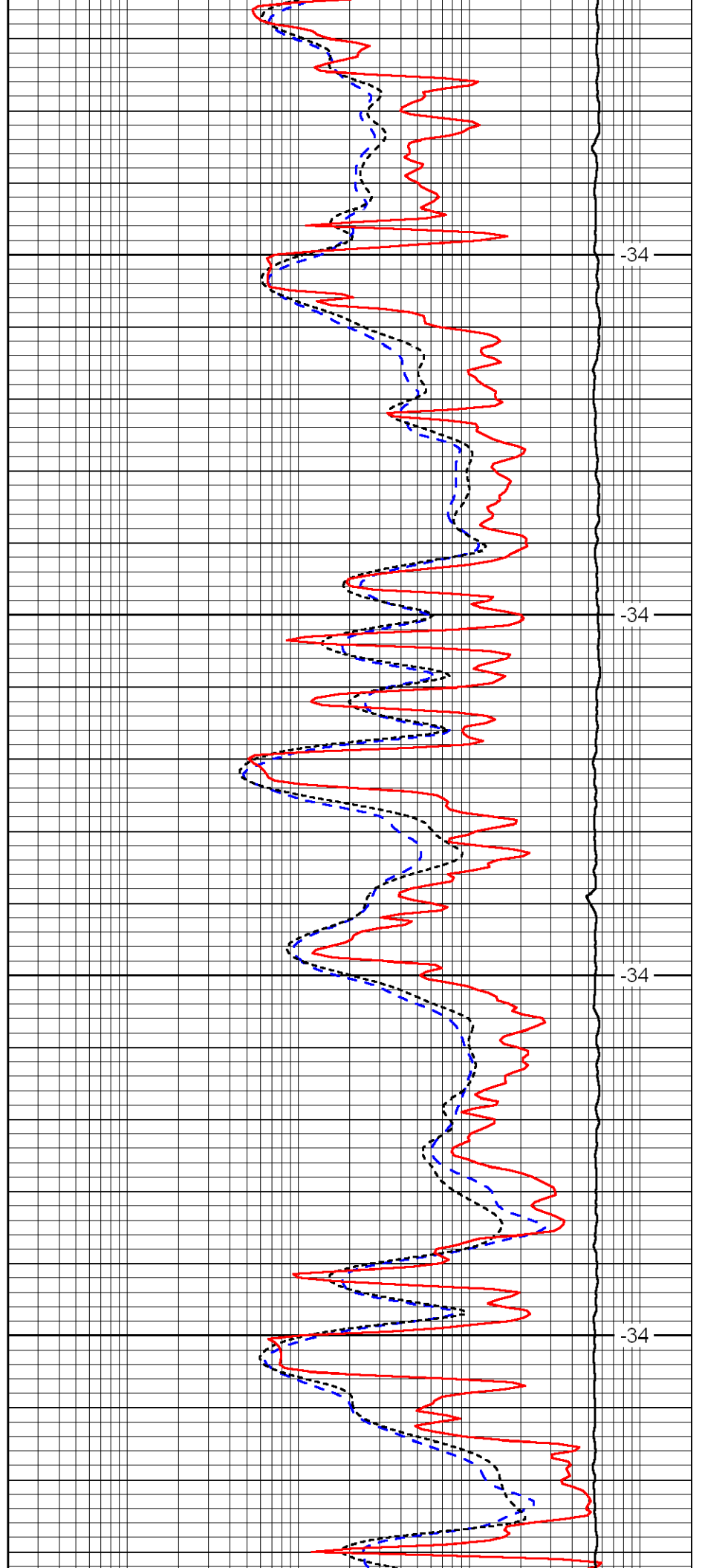


3800

3850

3900

3950

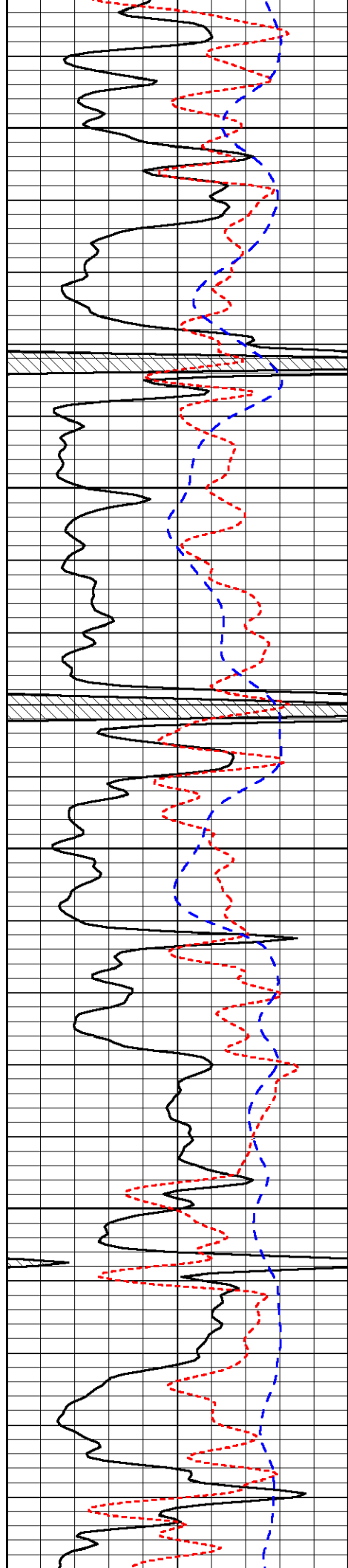


-34

-34

-34

-34



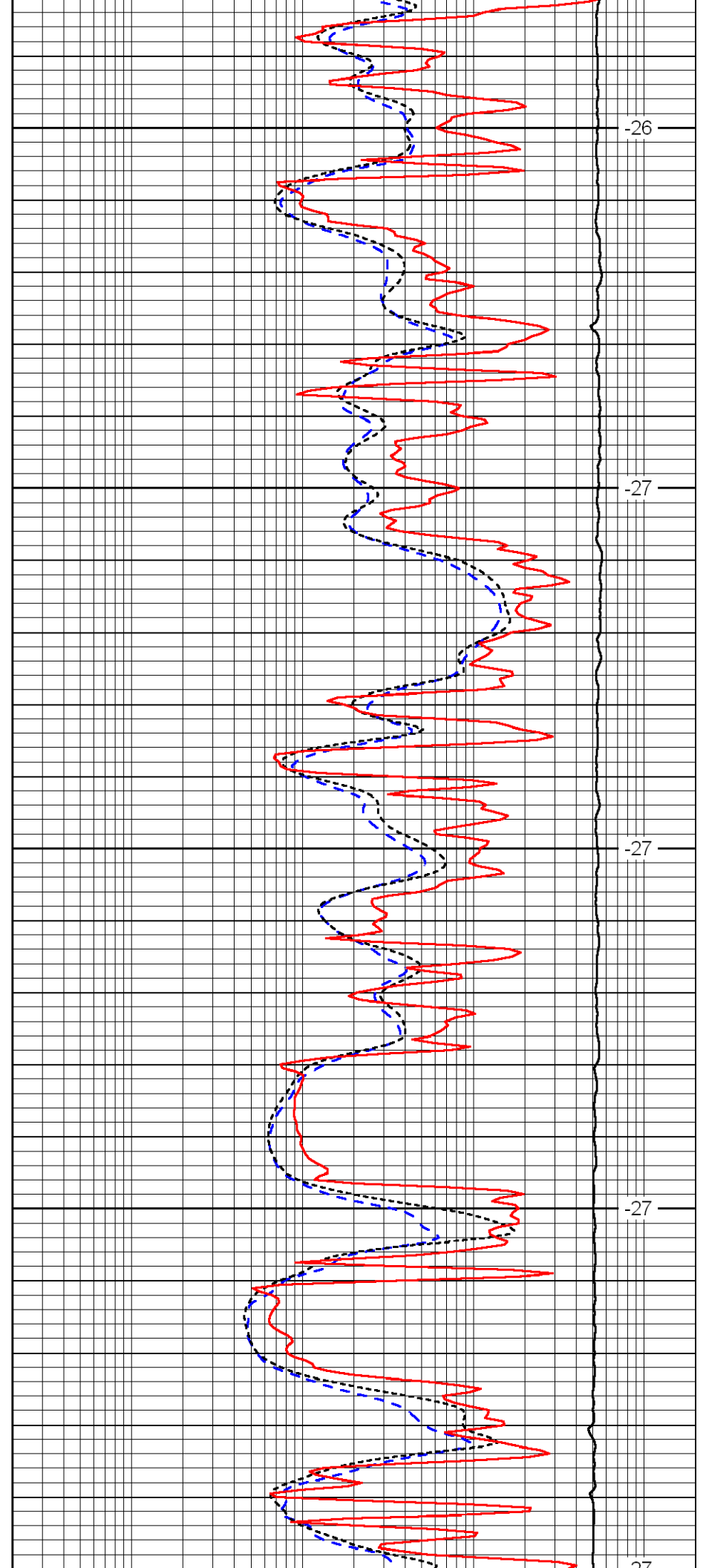
4000

4050

4100

4150

4200



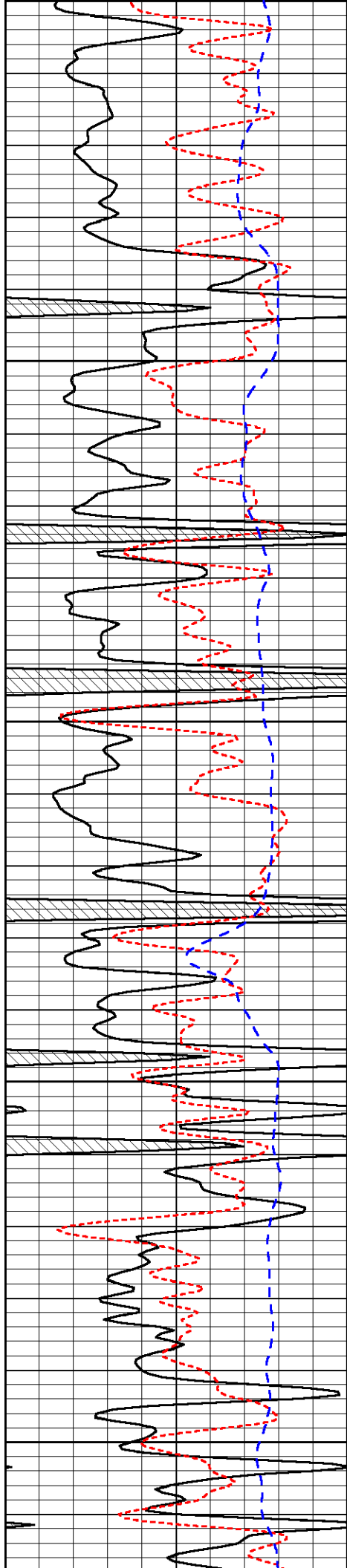
-26

-27

-27

-27

-27



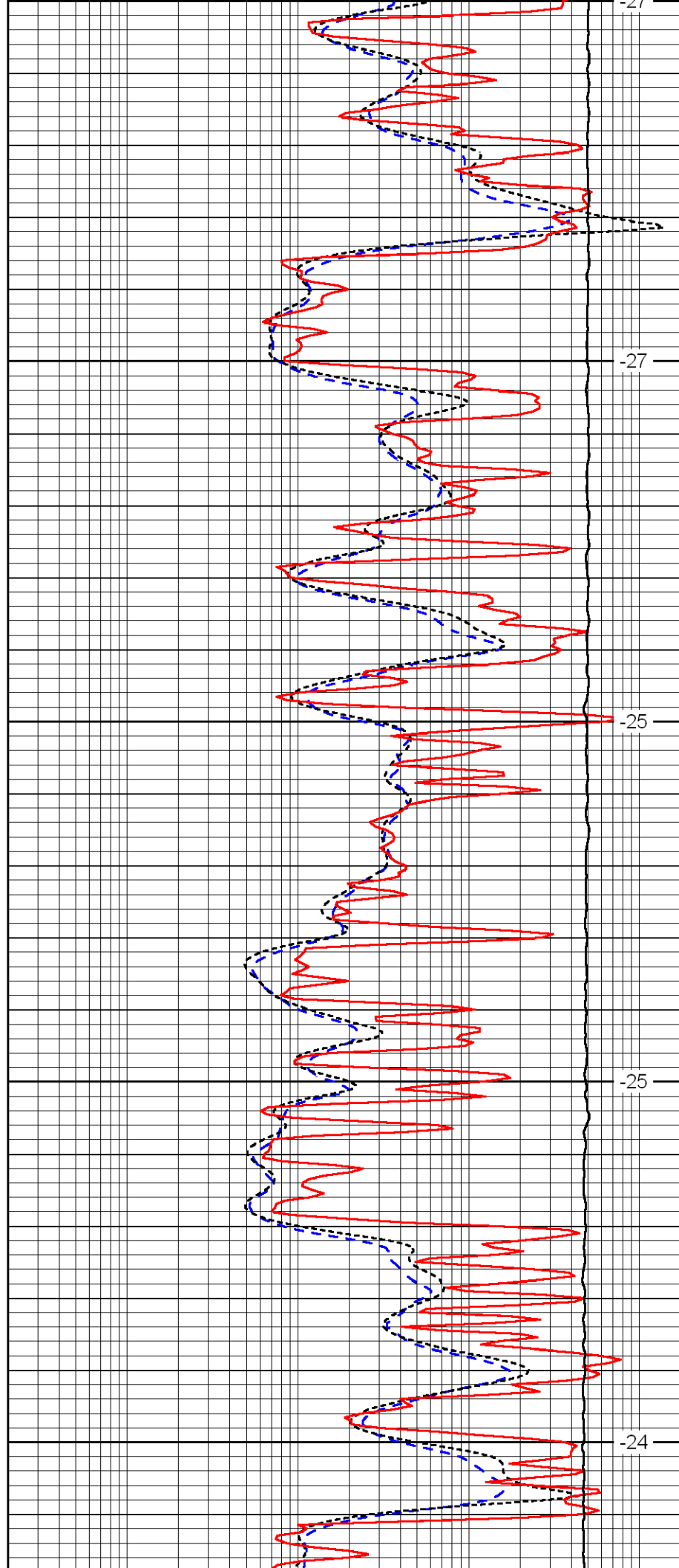
4200

4250

4300

4350

4400



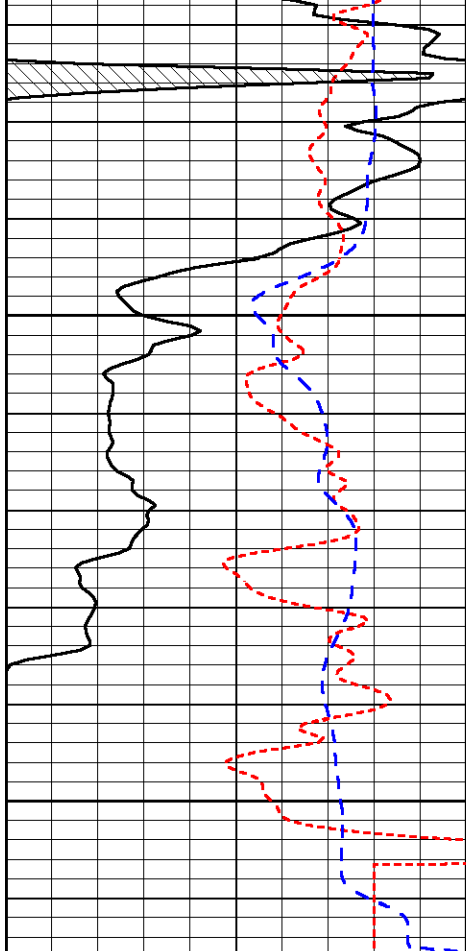
-27

-27

-25

-25

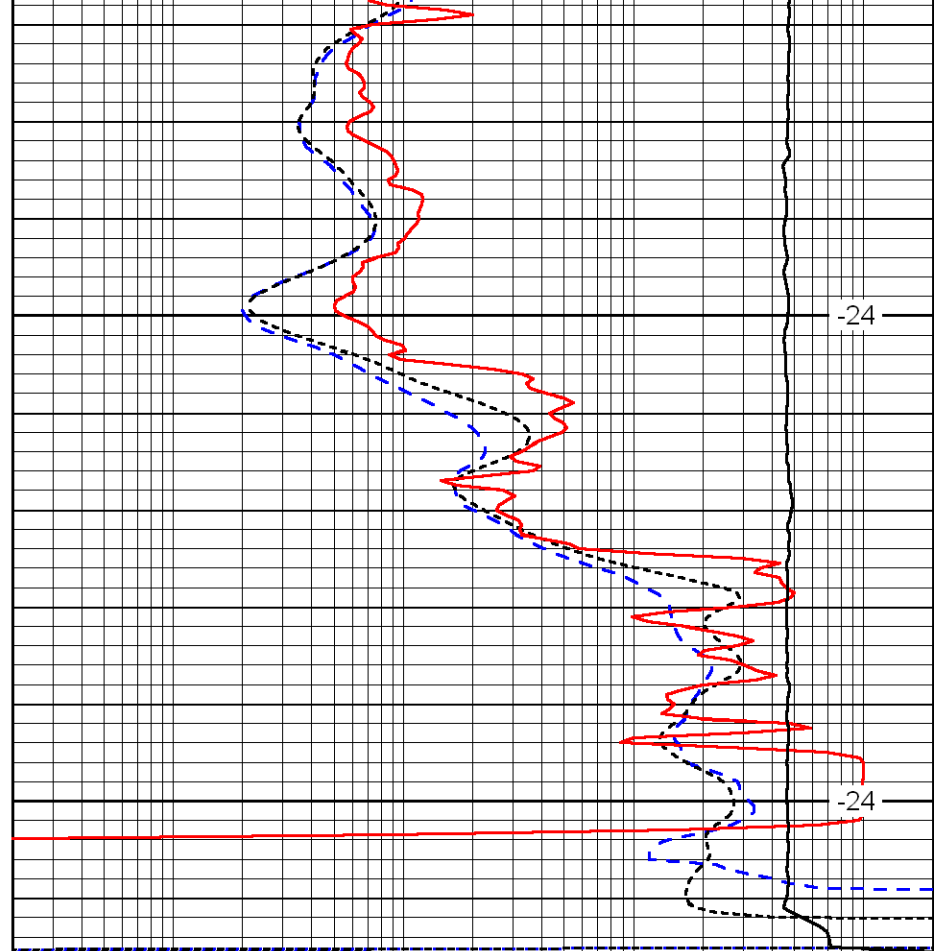
-24



4450

4500

0	Gamma Ray	150
-160	RXO/RT	40
-200	SP	0



-24

-24

0.2	Deep Resistivity	2000
0.2	Medium Resistivity	2000
0.2	Shallow Resistivity	2000
10000	Line Tension	0

LSPD