



Dual Induction Log

DIGITAL LOG (785) 625-3858

API No.	15-109-20,899-00-00	
Company	Brito Oil Co., Inc.	
Well	Fairleigh No. 1-12	
Field	Wildcat	
County	Logan	State Kansas
Location	1590' FSL & 425' FEL	
Sec: 12	Twp: 15 S	Rge: 33 W
Permanent Datum	Ground Level	Elevation 2793
Log Measured From	Kelly Bushing	5 Ft. Above Perm. Datum
Drilling Measured From	Kelly Bushing	K.B. 2798
		D.F. 2793
		G.L. 2793

Date	5/12/2010	
Run Number	One	
Depth Driller	4490	
Depth Logger	4490	
Bottom Logged Interval	4489	
Top Log Interval	200	
Casing Driller	8.625 @ 220	
Casing Logger	218	
Bit Size	7.875	
Type Fluid in Hole	Chemical	
Salinity, ppm CL	4.400	
Density / Viscosity	9.2	54
pH / Fluid Loss	10.5	8.0
Source of Sample	Flowline	
Rm @ Meas. Temp	.75 @	60
Rmf @ Meas. Temp	.56 @	60
Rmc @ Meas. Temp	1.01 @	60
Source of Rmf / Rmc	Charts	
Rm @ BHT	.37 @	123
Operating Rig Time	4 Hours	
Max Rec. Temp. F	123	
Equipment Number	7	
Location	Havs	
Recorded By	K. Bange	
Witnessed By	Jeff Christian	

<<< Fold Here >>>

All interpretations are opinions based on inferences from electrical or other measurements and we cannot and do not guarantee the accuracy or correctness of any interpretation, and we shall not, except in the case of gross or willful negligence on our part, be liable or responsible for any loss, costs, damages, or expenses incurred or sustained by anyone resulting from any interpretation made by any of our officers, agents or employees. These interpretations are also subject to our general terms and conditions set out in our current Price Schedule.

Comments

Thank you for using Log-Tech, Inc.
 (785) 625-3858

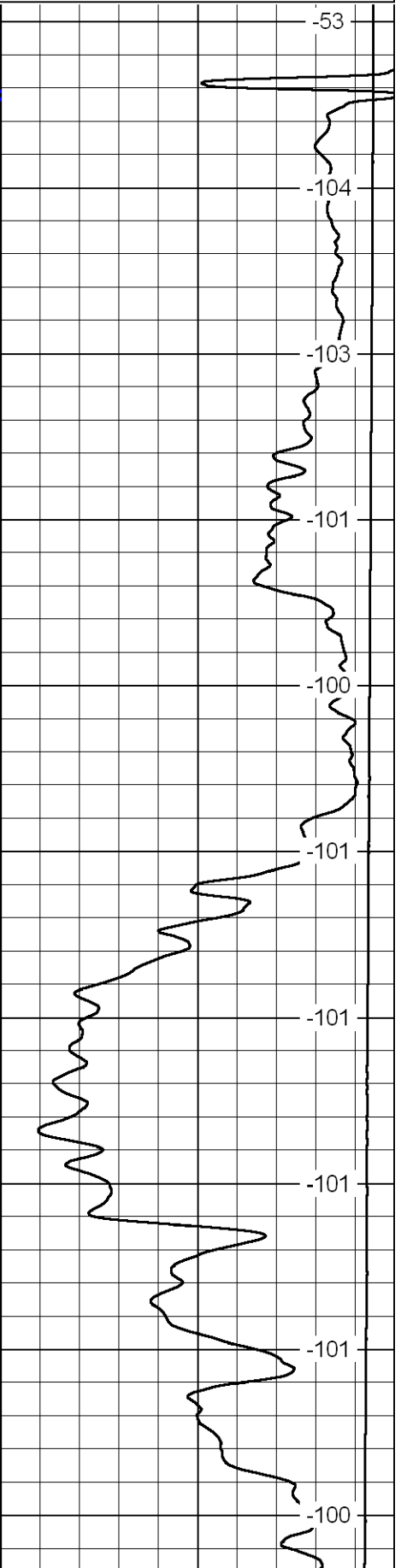
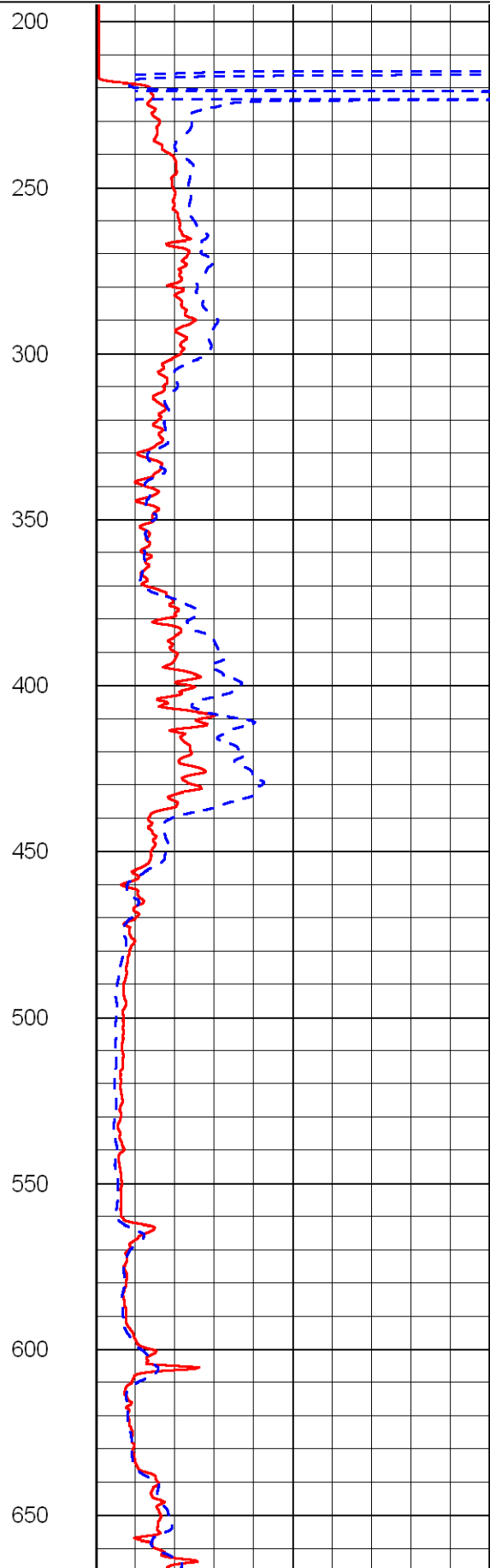
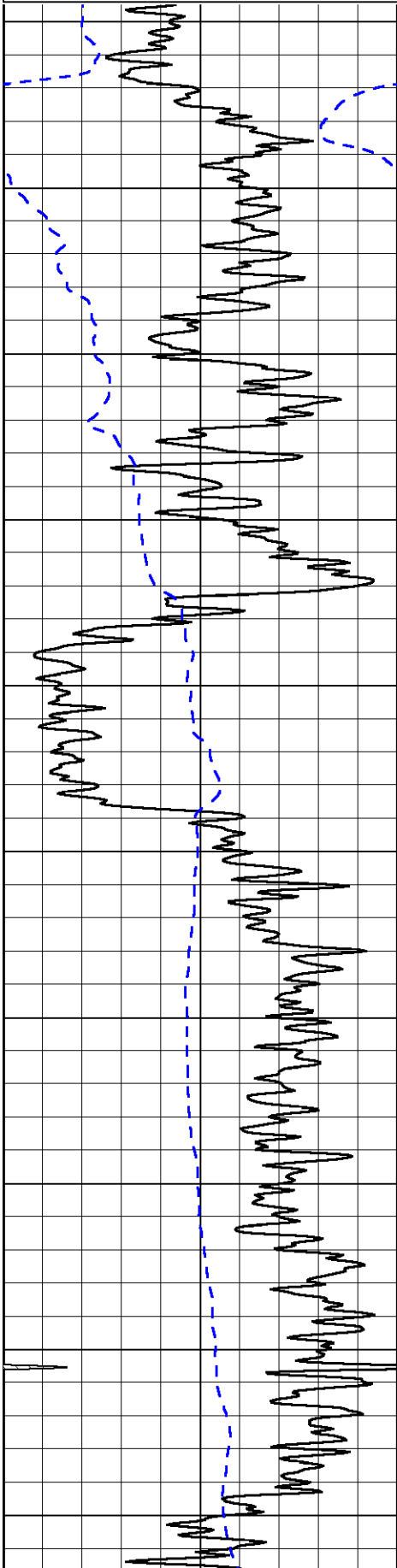
Oakley, S 24 to 474 rd. (across river), 5 W to T, 2 S, E into (follow lease road)

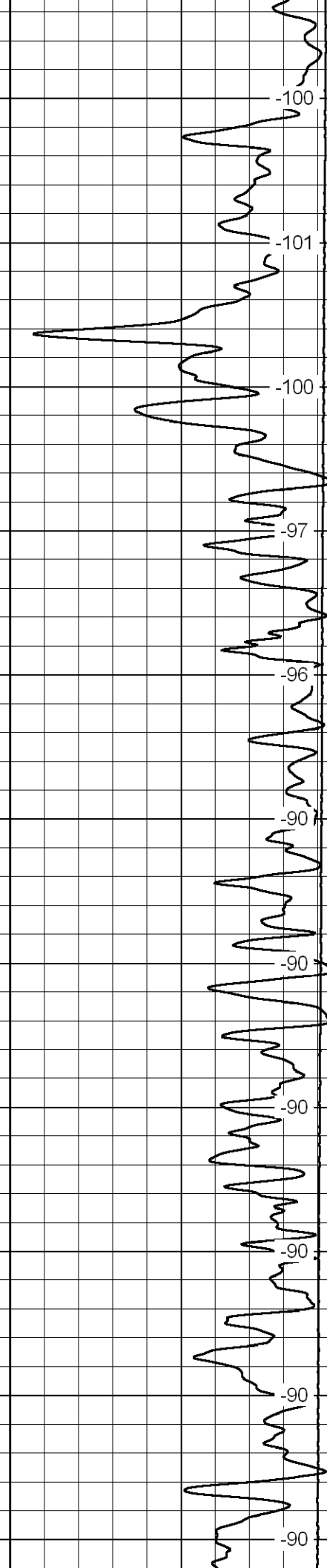
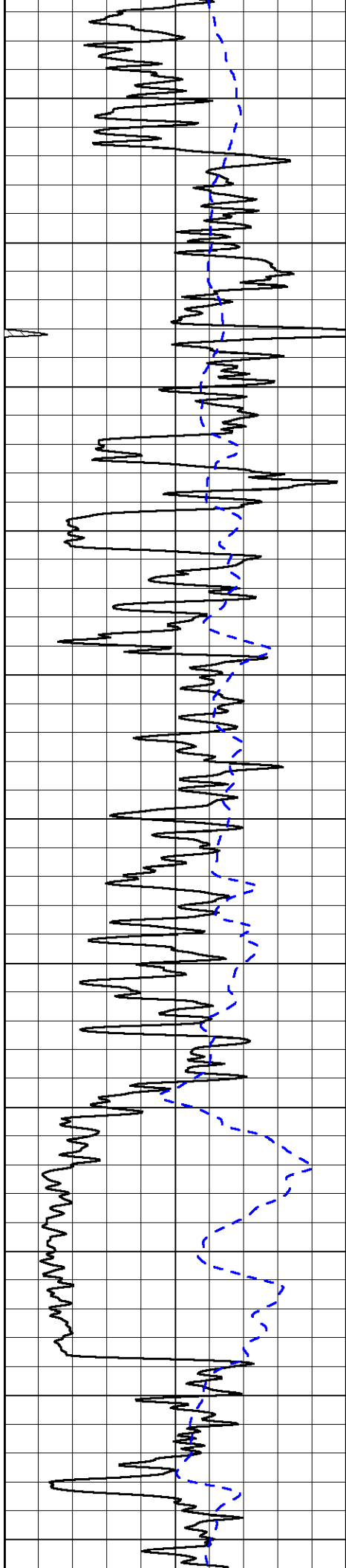
Database File: britohd.db
 Dataset Pathname: dil/brito2in
 Presentation Format: dil2in
 Dataset Creation: Wed May 12 04:23:45 2010
 Charted by: Depth in Feet scaled 1:600

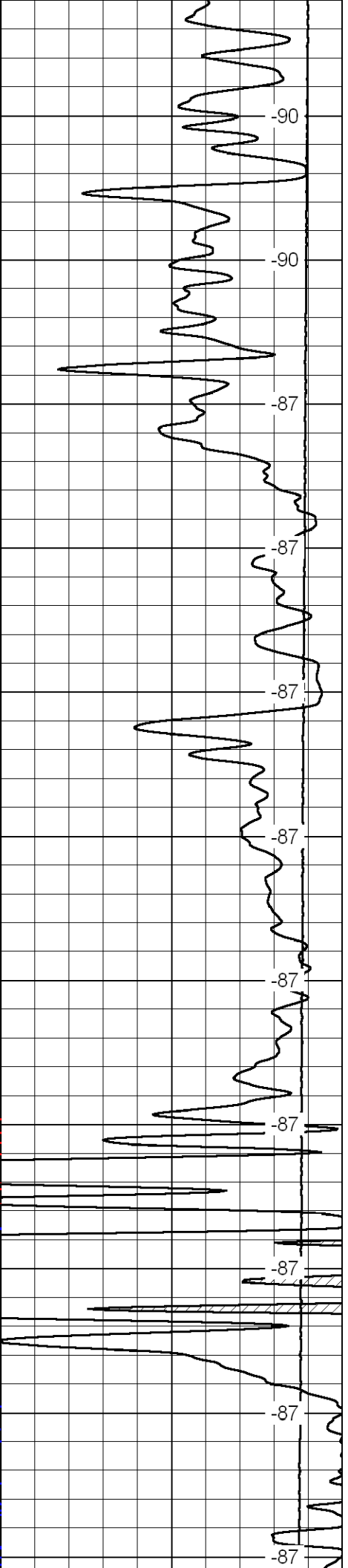
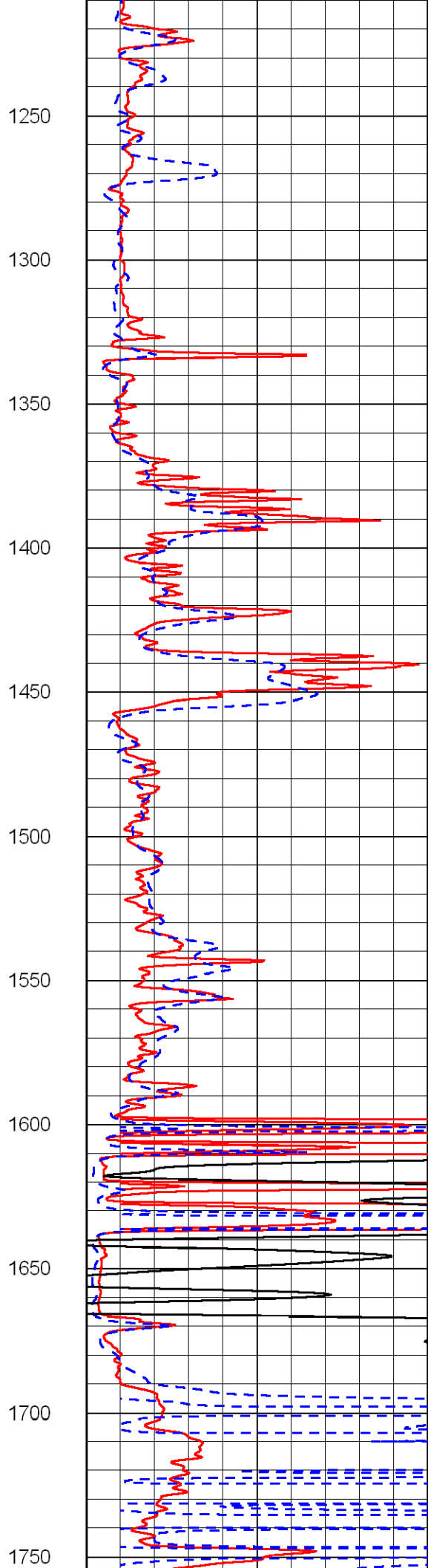
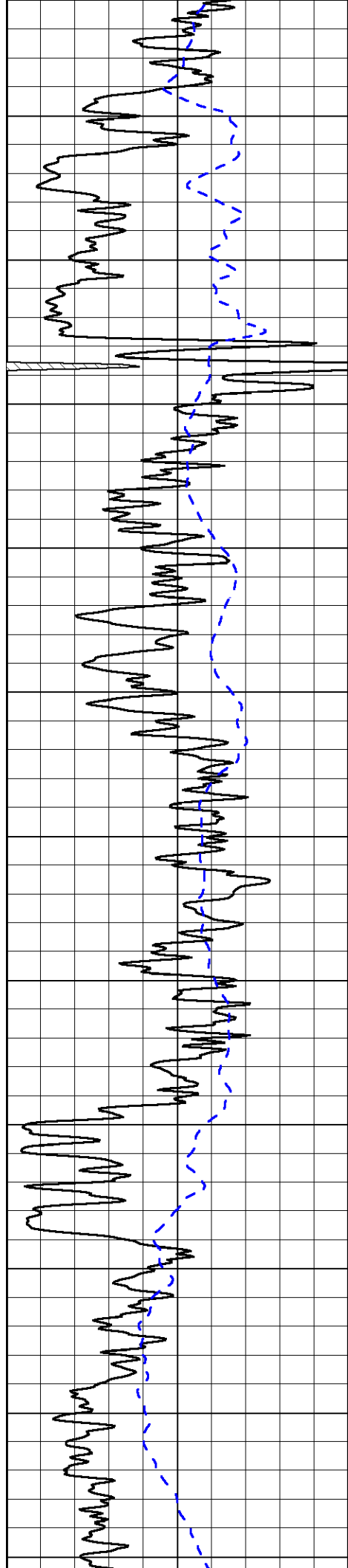
0	Gamma Ray	150
-200	SP	0

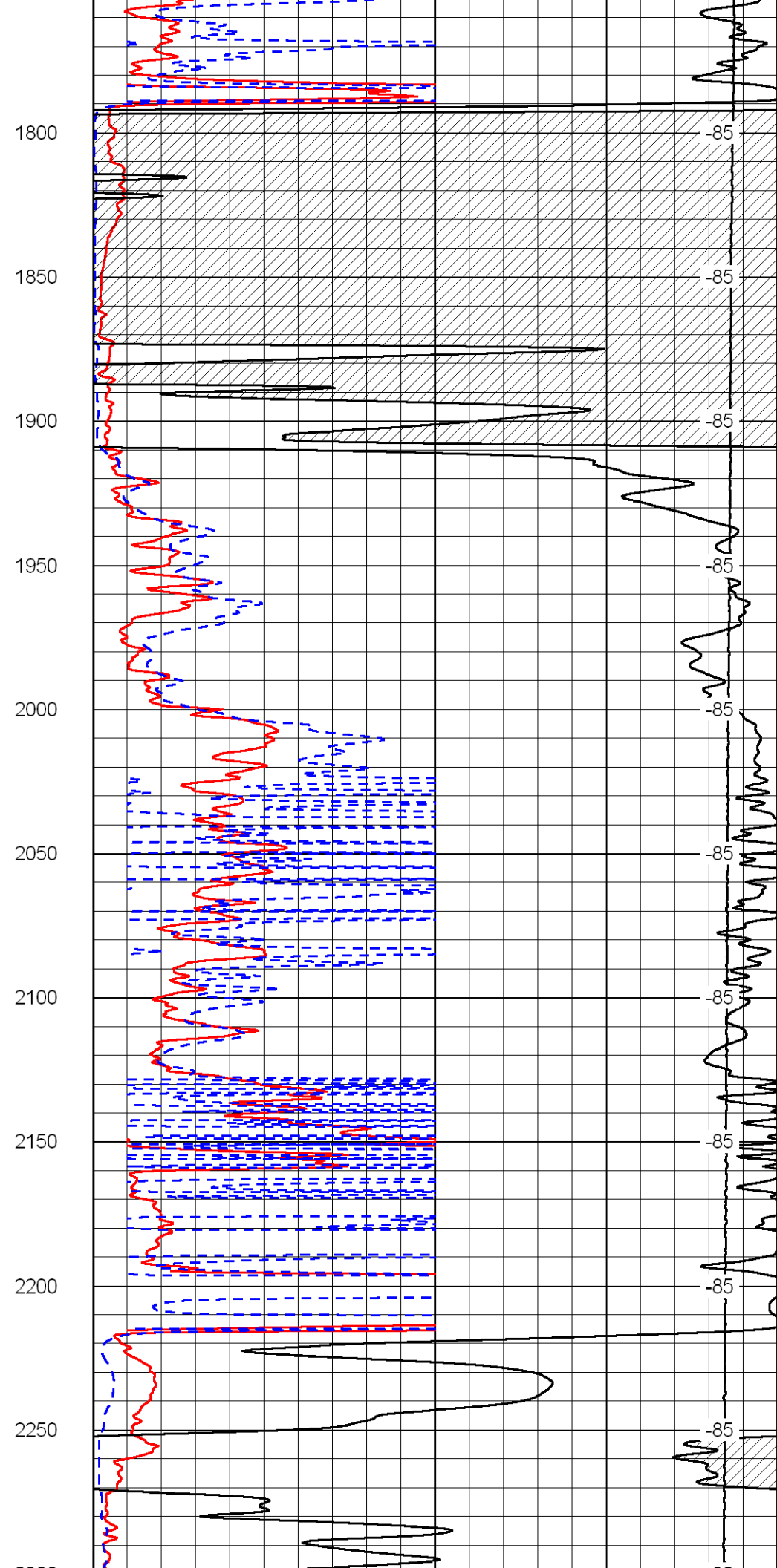
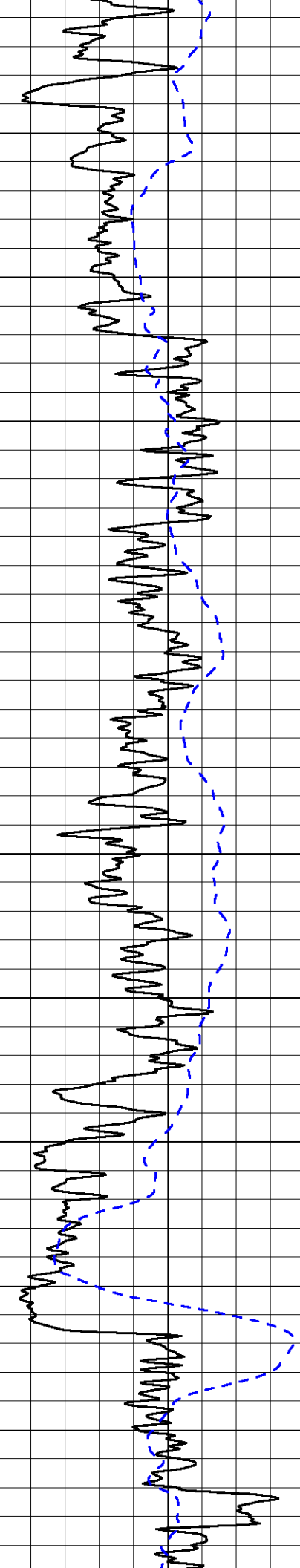
0	Shallow Resistivity	50
0	Deep Resistivity	50
1000	Conductivity	0
15000	Line Tension	0

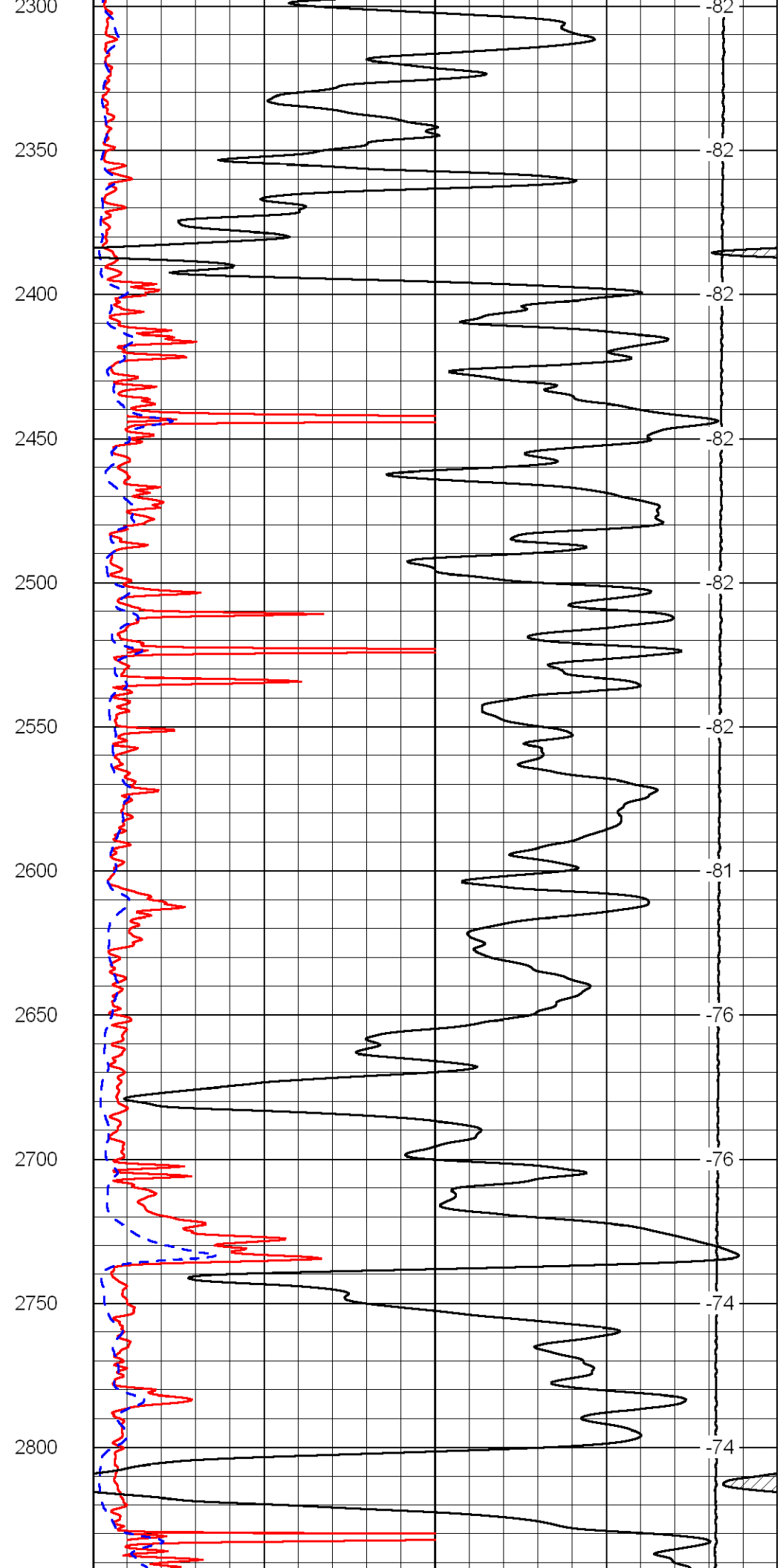
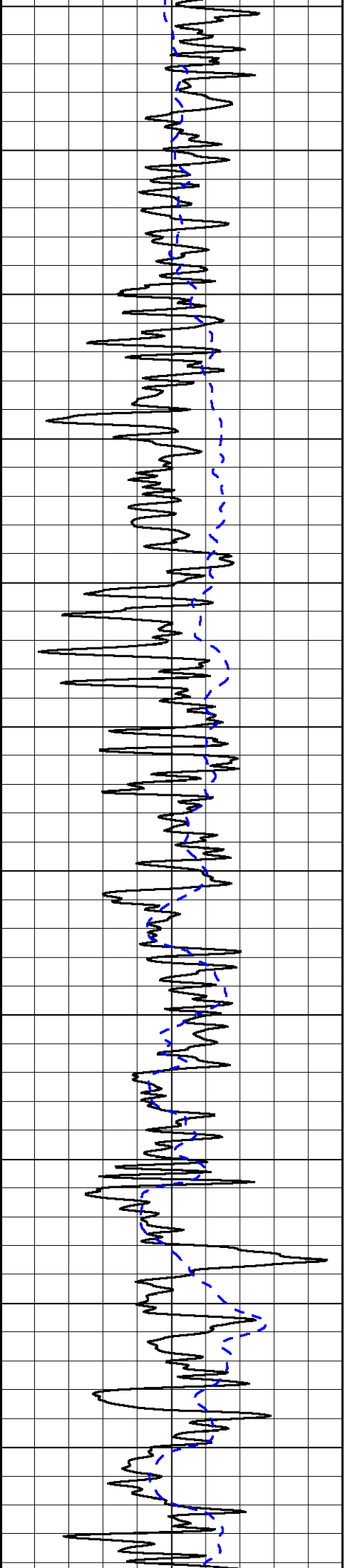
LSPD	0
------	---

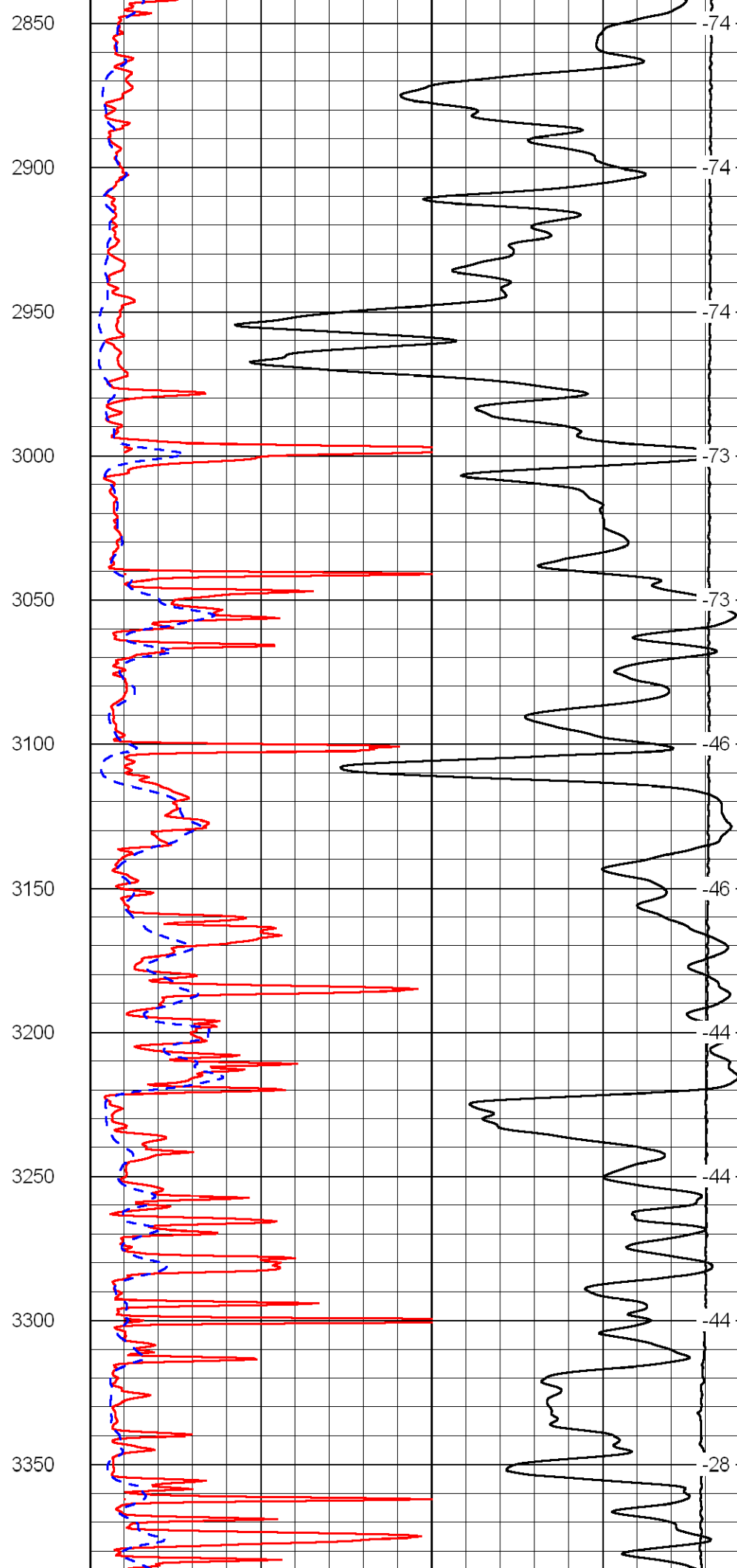
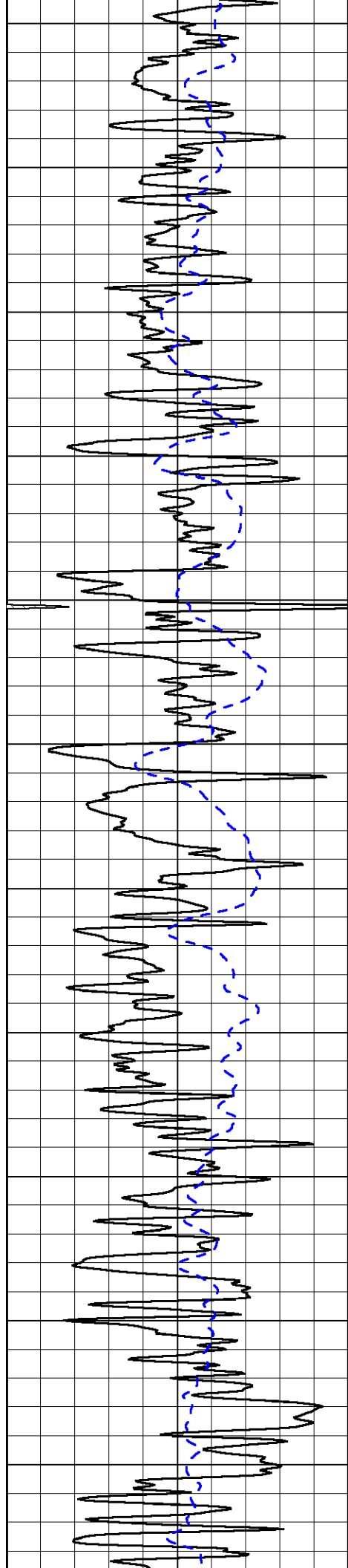


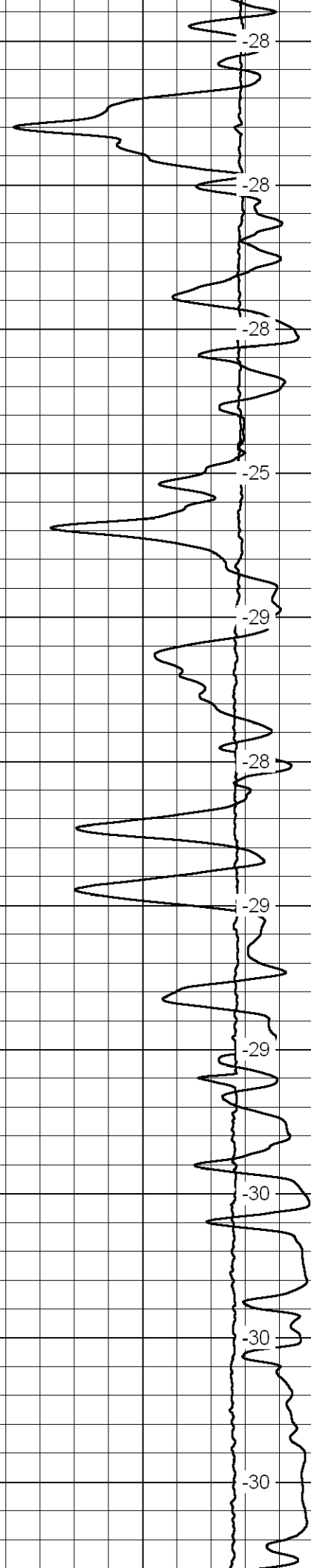
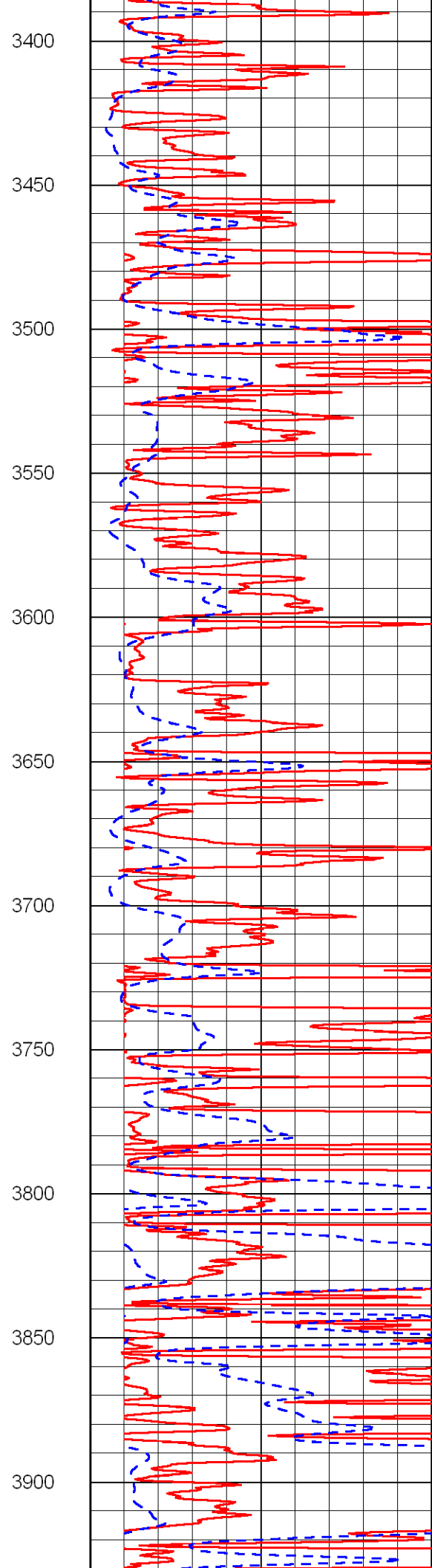
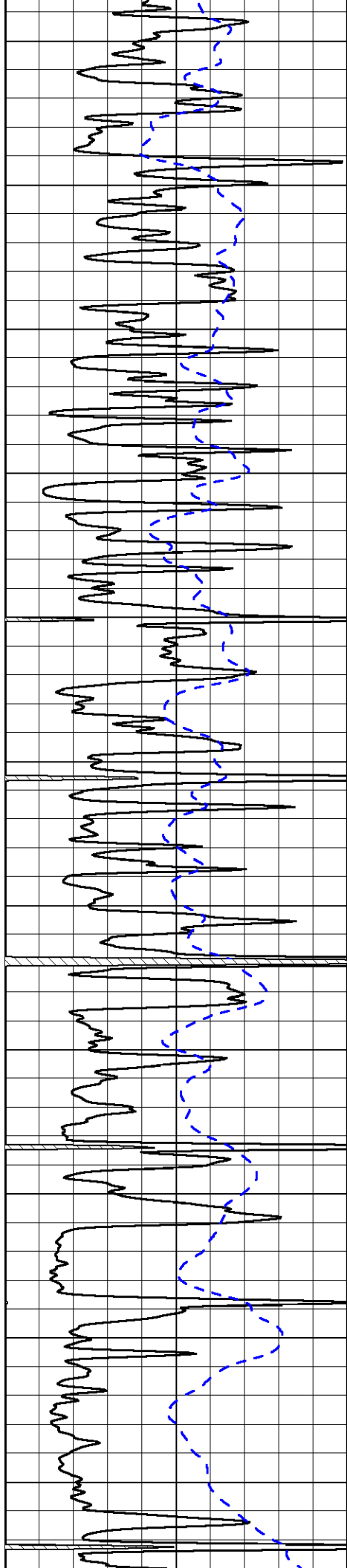


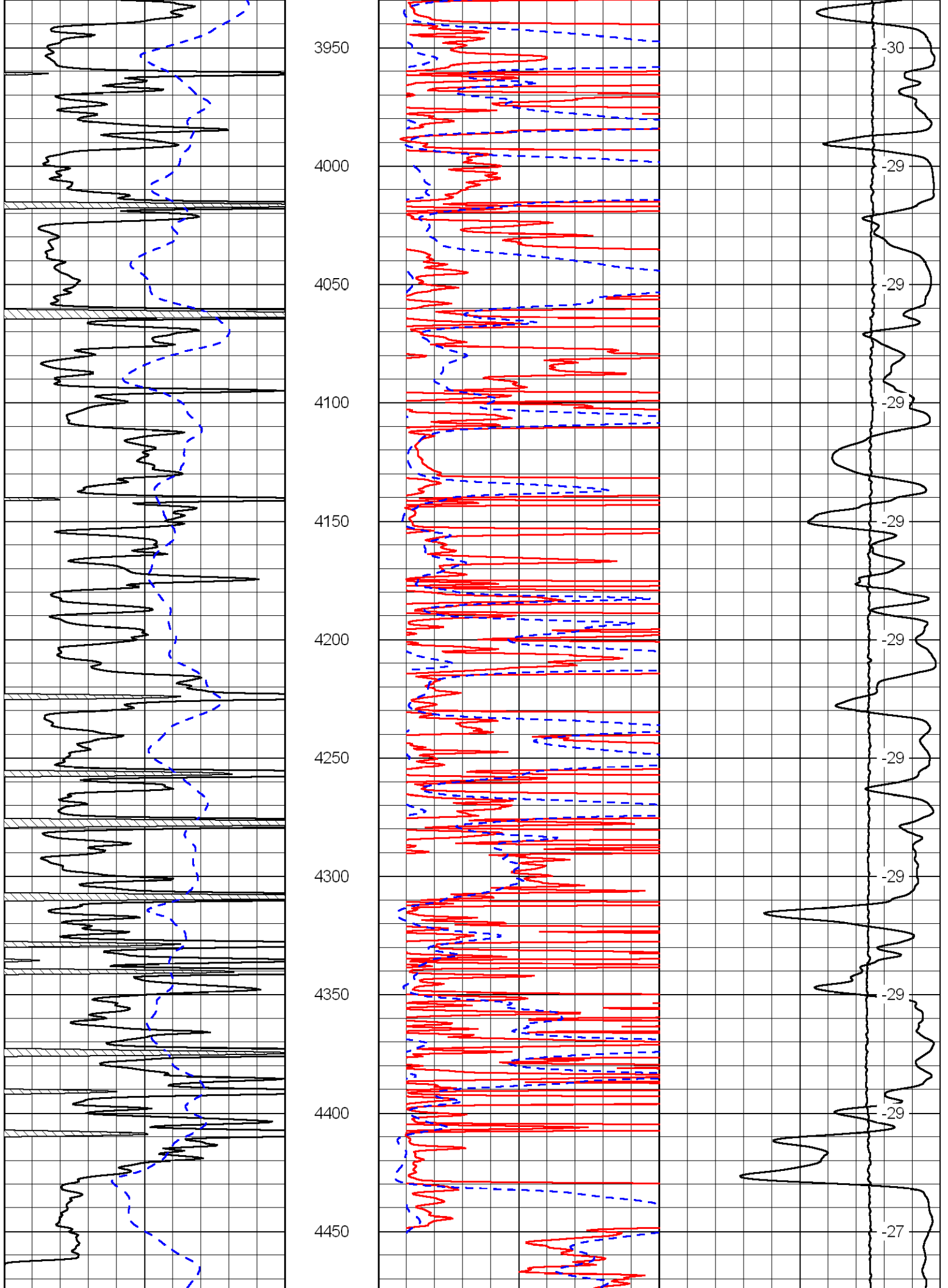


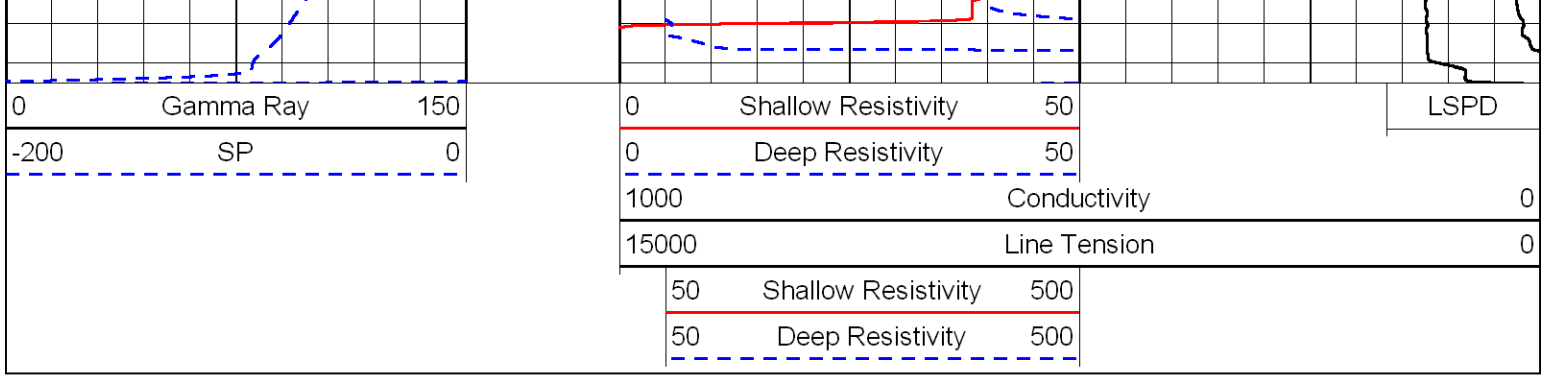




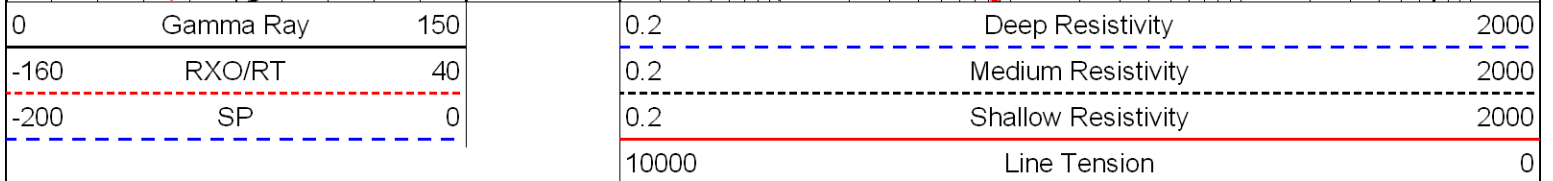
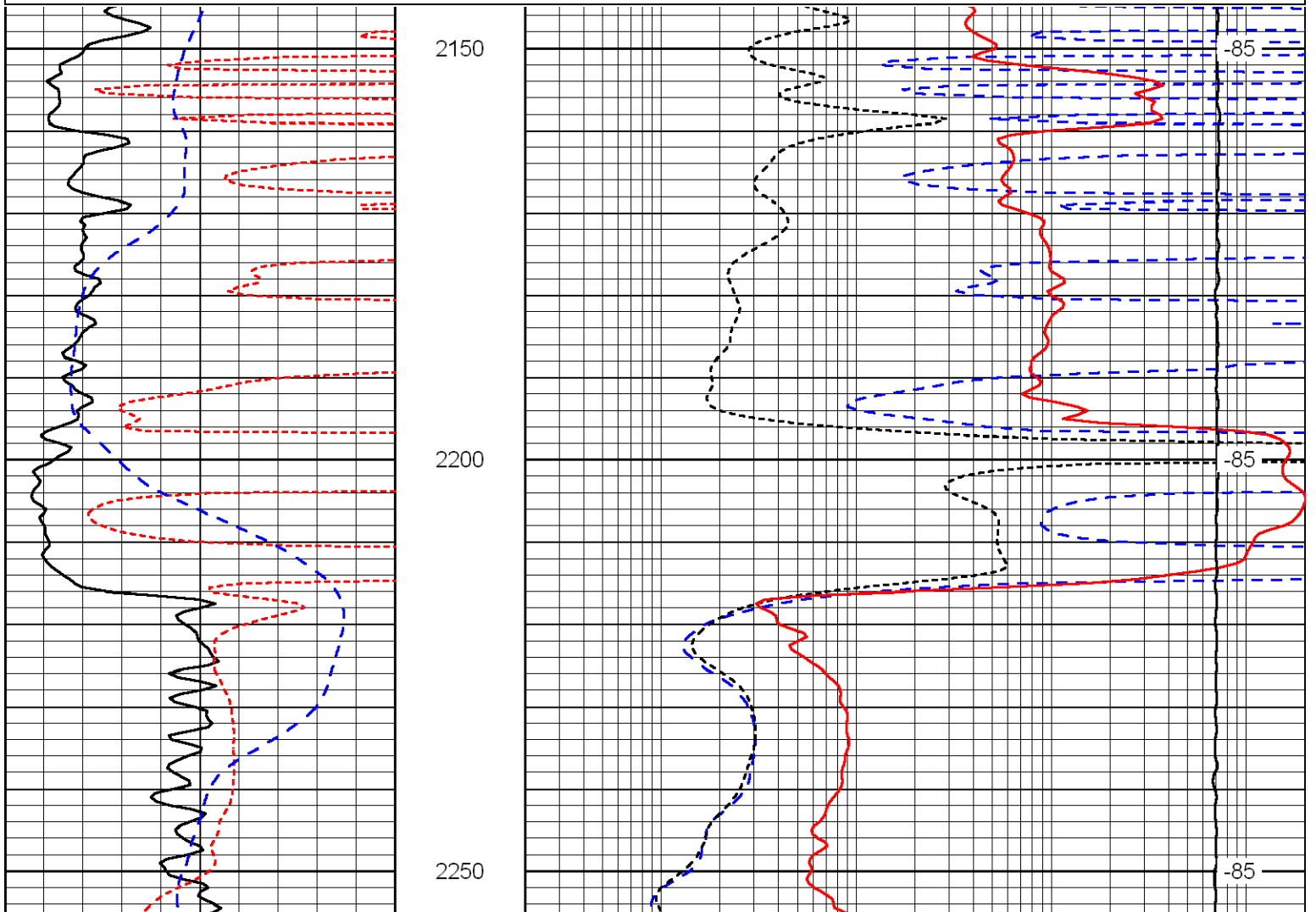
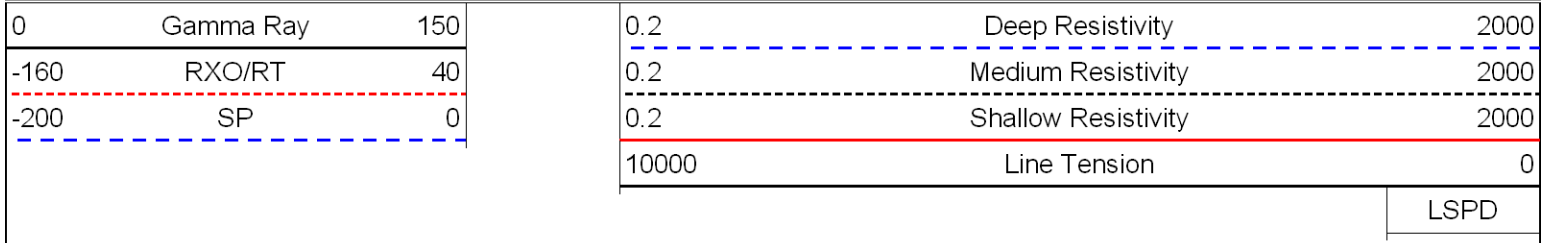








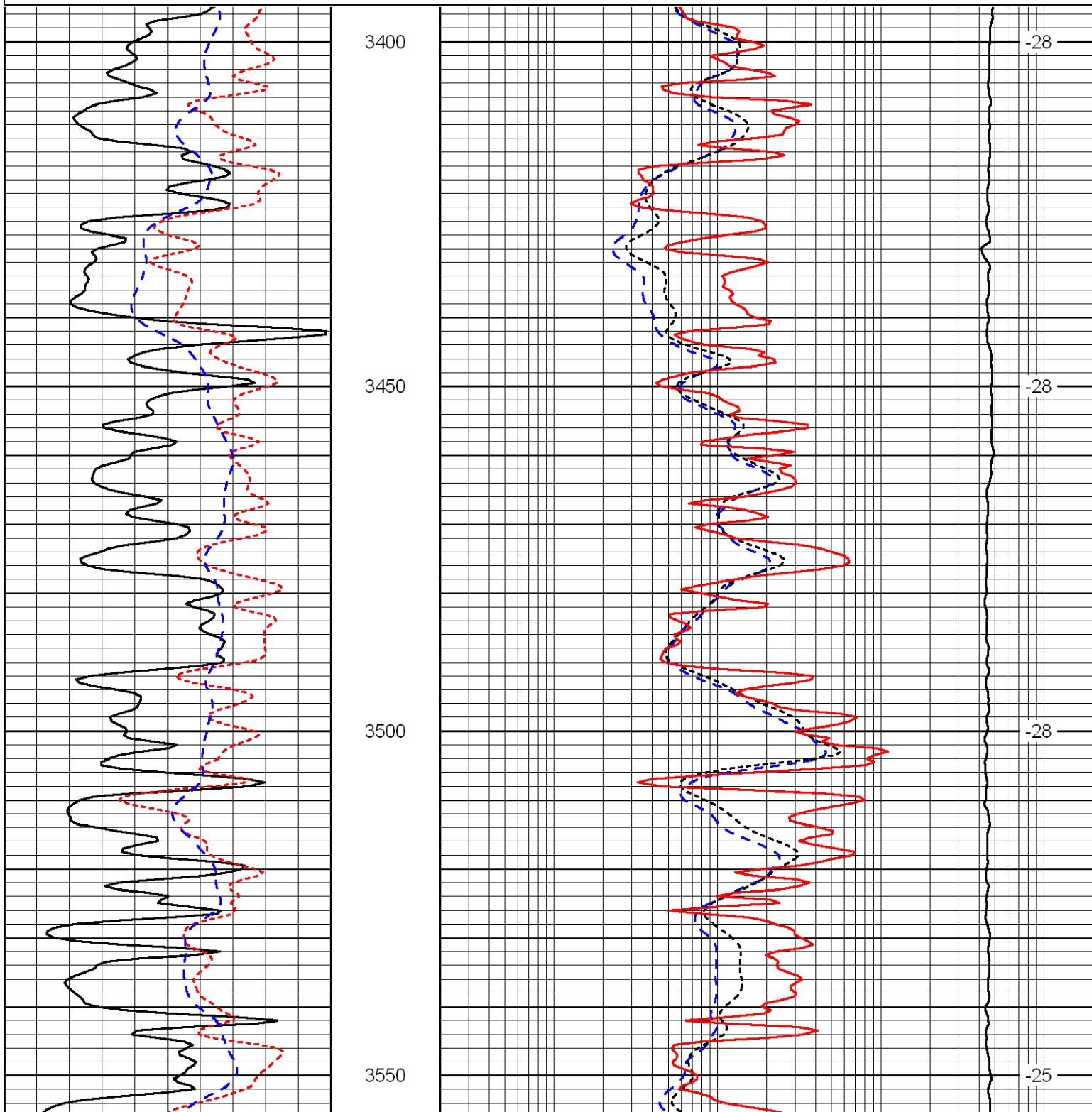
Database File: britohd.db
 Dataset Pathname: dil/brito2in
 Presentation Format: dil
 Dataset Creation: Wed May 12 04:23:45 2010
 Charted by: Depth in Feet scaled 1:240

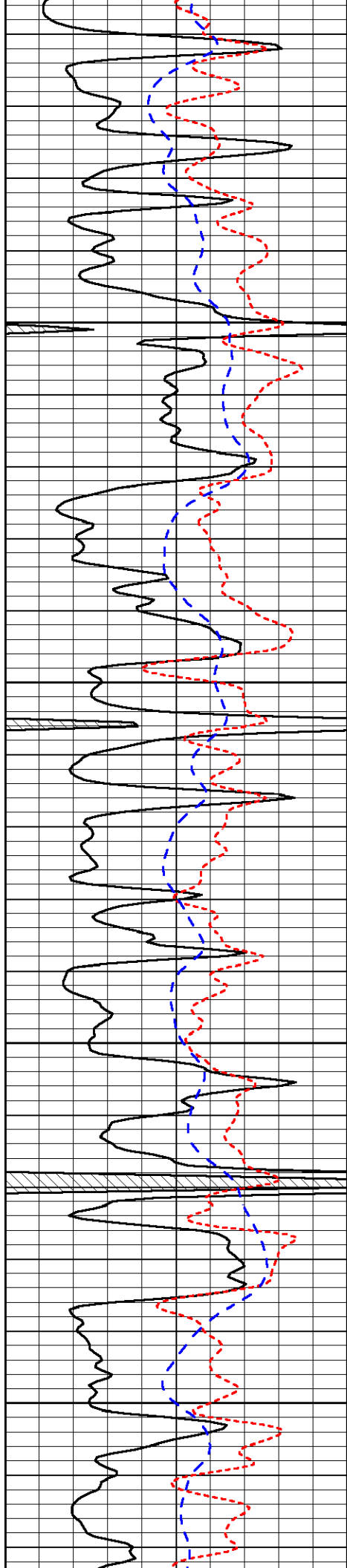


Database File: britohd.db
Dataset Pathname: dil/brito2in
Presentation Format: dil
Dataset Creation: Wed May 12 04:23:45 2010
Charted by: Depth in Feet scaled 1:240

0	Gamma Ray	150
-160	RXO/RT	40
-200	SP	0

0.2	Deep Resistivity	2000
0.2	Medium Resistivity	2000
0.2	Shallow Resistivity	2000
10000	Line Tension	0



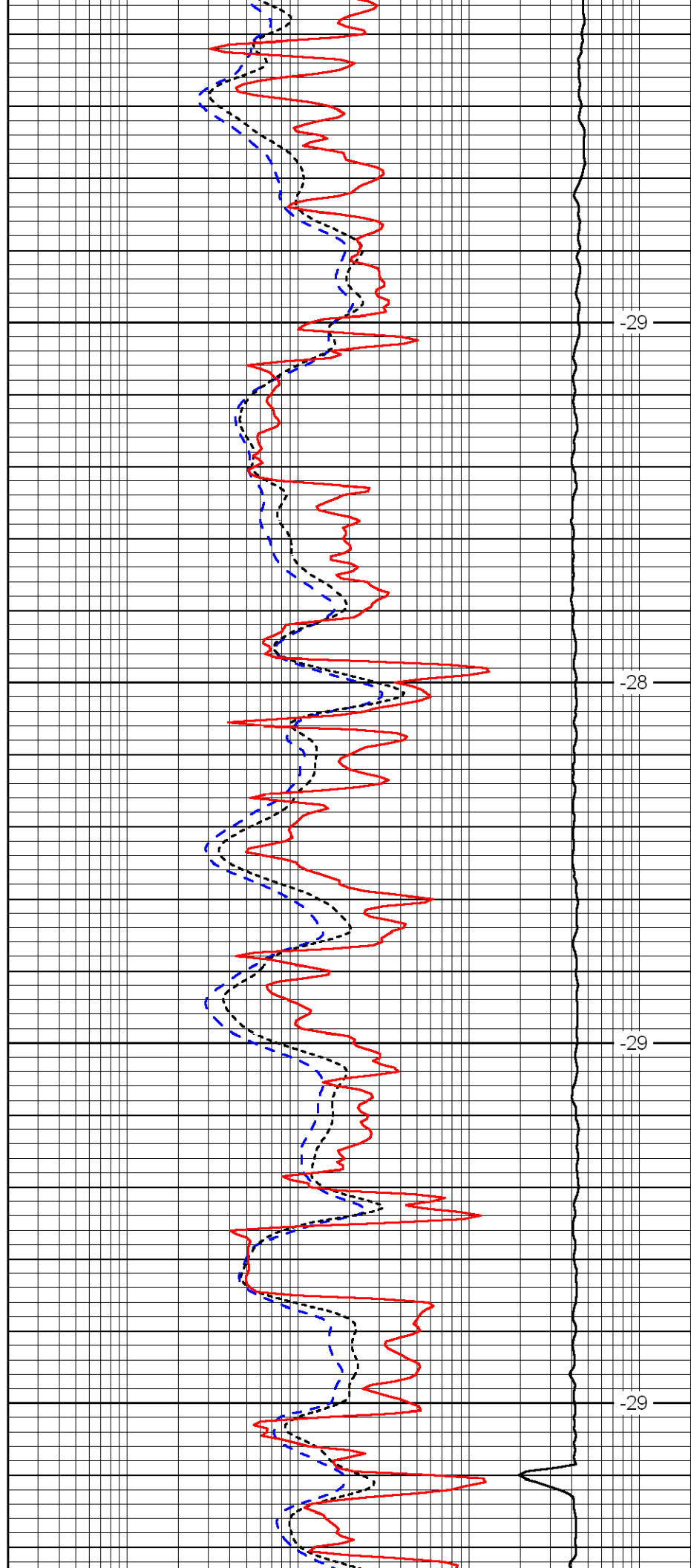


3600

3650

3700

3750

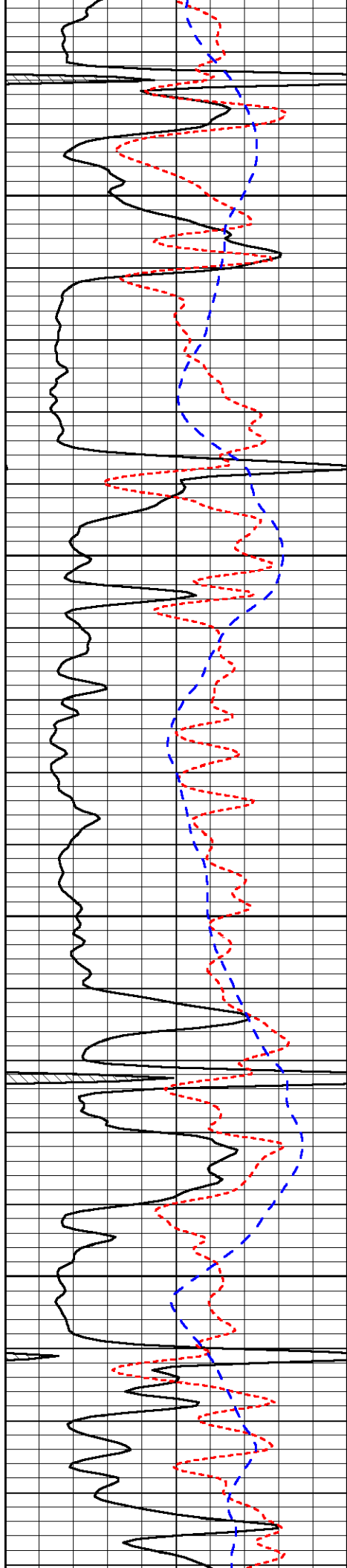


-29

-28

-29

-29

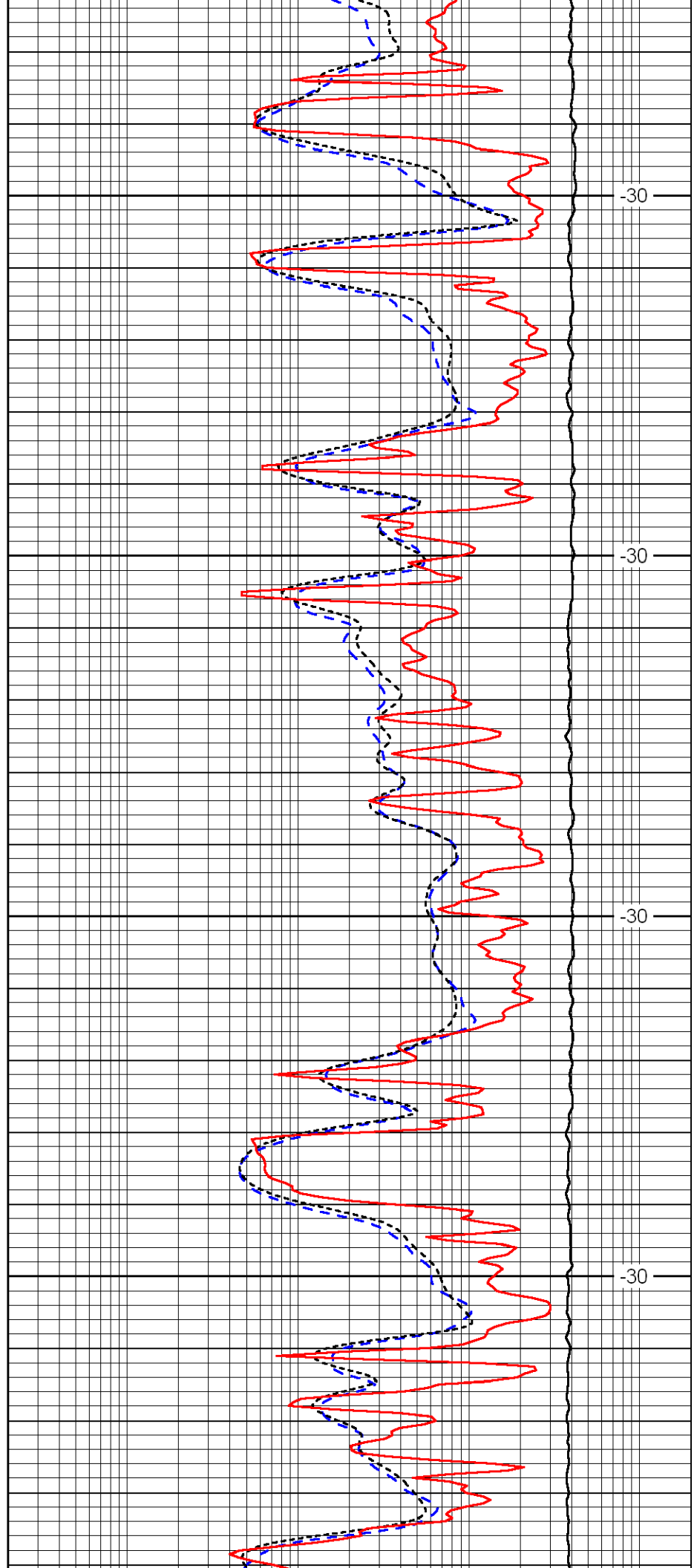


3800

3850

3900

3950

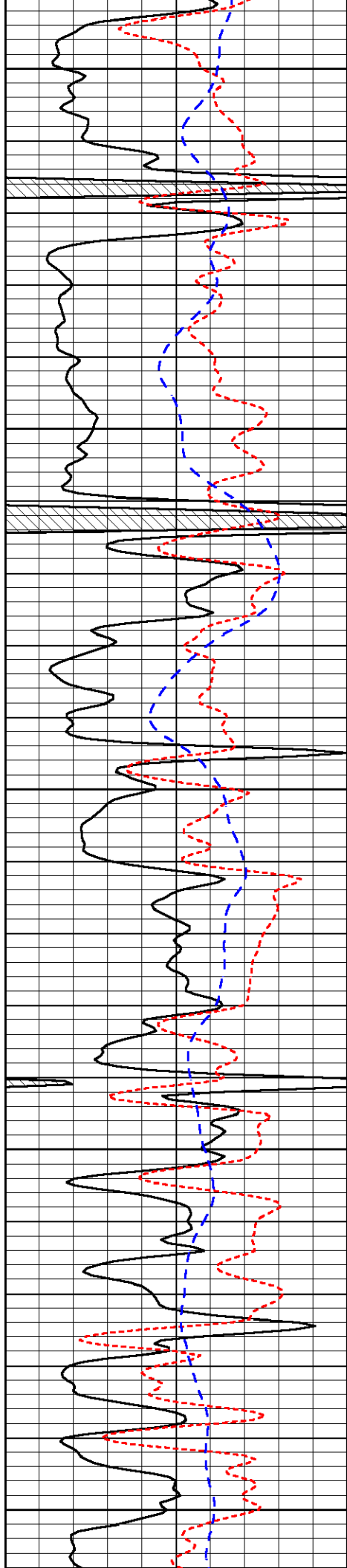


-30

-30

-30

-30



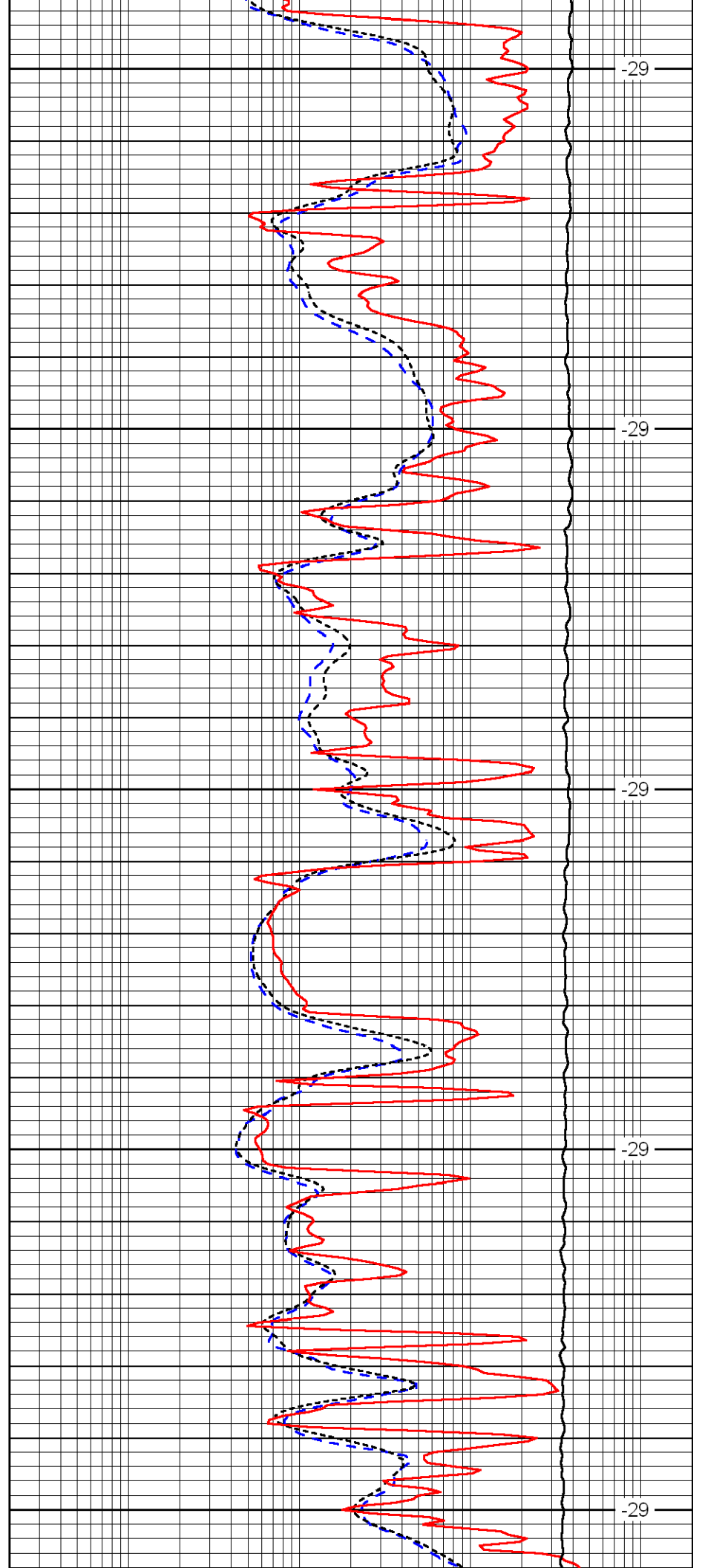
4000

4050

4100

4150

4200



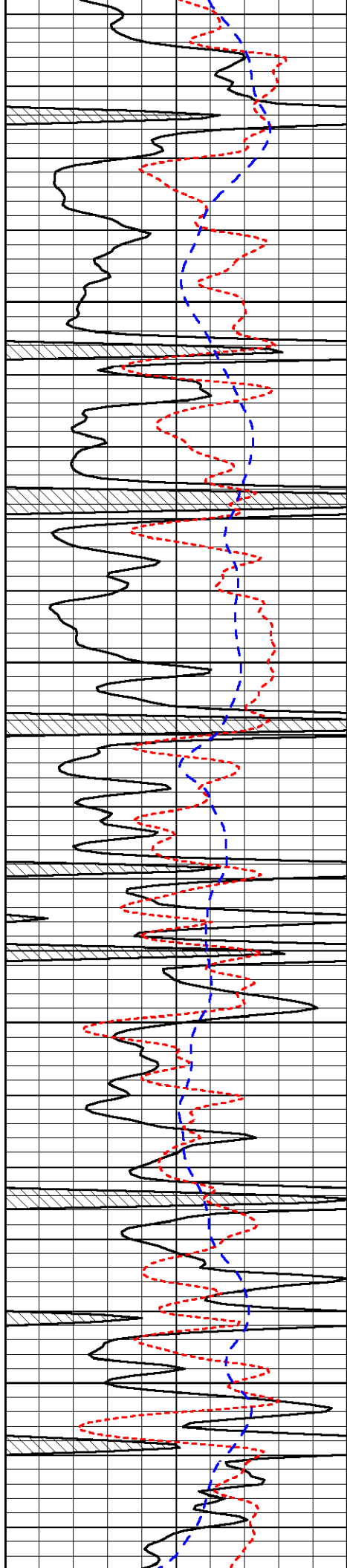
-29

-29

-29

-29

-29

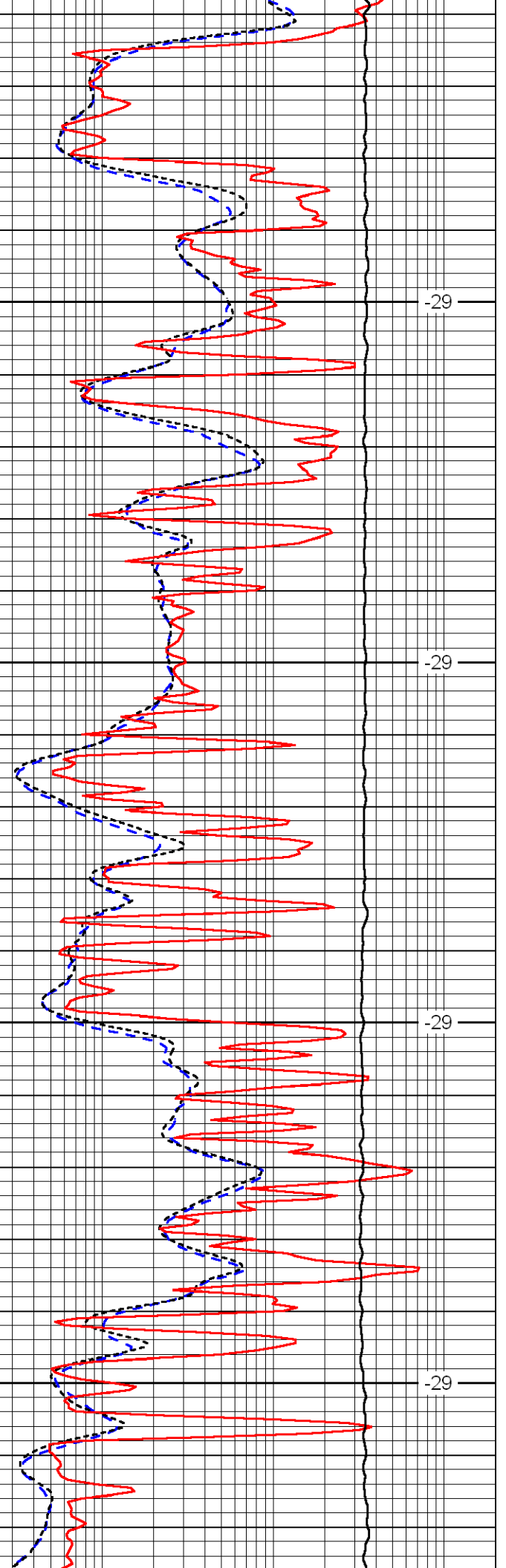


4250

4300

4350

4400

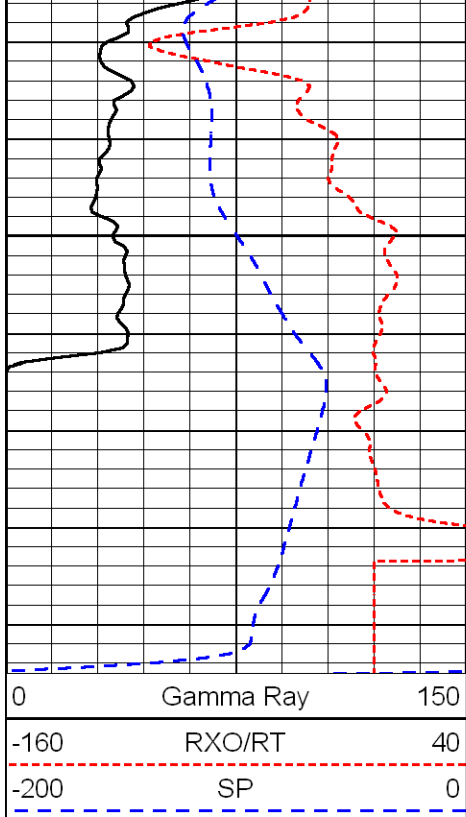


-29

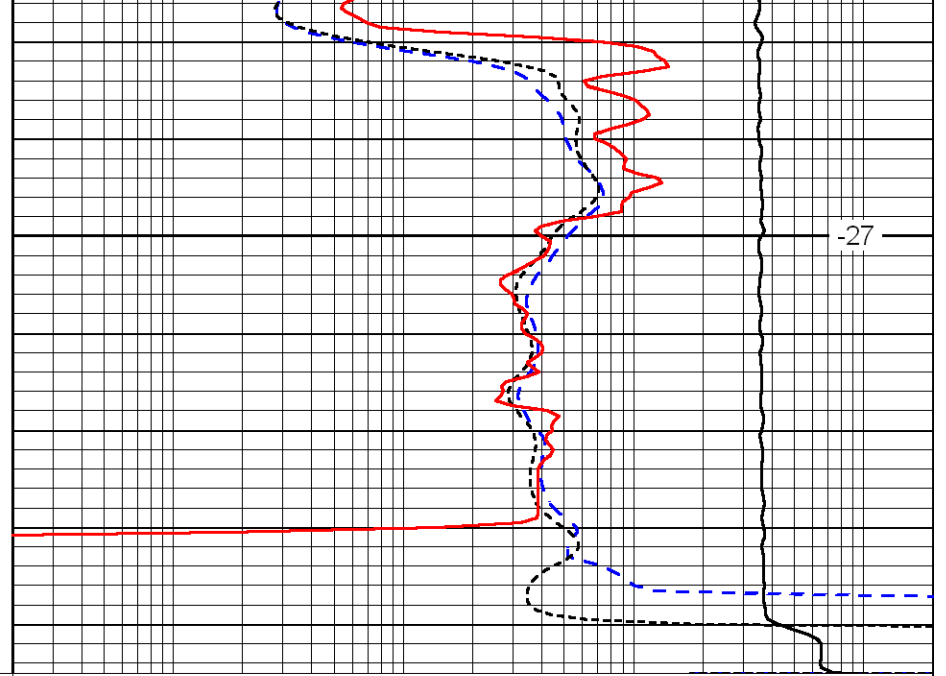
-29

-29

-29



4450



-27

0.2	Deep Resistivity	2000
0.2	Medium Resistivity	2000
0.2	Shallow Resistivity	2000
10000	Line Tension	0

LSPD