



## Dual Compensated Porosity Log

**DIGITAL LOG** (785) 625-3858

API No.	15-109-20,899-00-00		
Company	Brito Oil Co., Inc.		
Well	Fairleigh No. 1-12		
Field	Wildcat		
County	Logan		State Kansas
Location	1590' FSL & 425' FEL		
Sec: 12	Twp: 15 S	Rge: 33 W	
Permanent Datum	Ground Level	Elevation 2793	
Log Measured From	Kelly Bushing	5	Ft. Above Perm. Datum
Drilling Measured From	Kelly Bushing		
		K.B.	2798
		D.F.	
		G.L.	2793
		Elevation	
		DIL / MEL	

Date	5/12/2010		
Run Number	One		
Type Log	CNL / CDL		
Depth Driller	4490		
Depth Logger	4490		
Bottom Logged Interval	4469		
Top Logged Interval	3400		
Type Fluid In Hole	Chemical		
Salinity, PPM CL	4,400		
Density	9.2		
Level	Full		
Max. Rec. Temp. F	123		
Operating Rig Time	4 Hours		
Equipment -- Location	7 Hays		
Recorded By	K. Bange		
Witnessed By	Jeff Christian		

Borehole Record				Casing Record			
Run No	Bit	From	To	Size	Wgt.	From	To
One	12.25	00	220	8.625	23#	00	220
Two	7.875	220	TD				

<<< Fold Here >>>

All interpretations are opinions based on inferences from electrical or other measurements and we cannot and do not guarantee the accuracy or correctness of any interpretation, and we shall not, except in the case of gross or willful negligence on our part, be liable or responsible for any loss, costs, damages, or expenses incurred or sustained by anyone resulting from any interpretation made by any of our officers, agents or employees. These interpretations are also subject to our general terms and conditions set out in our current Price Schedule.

### Comments

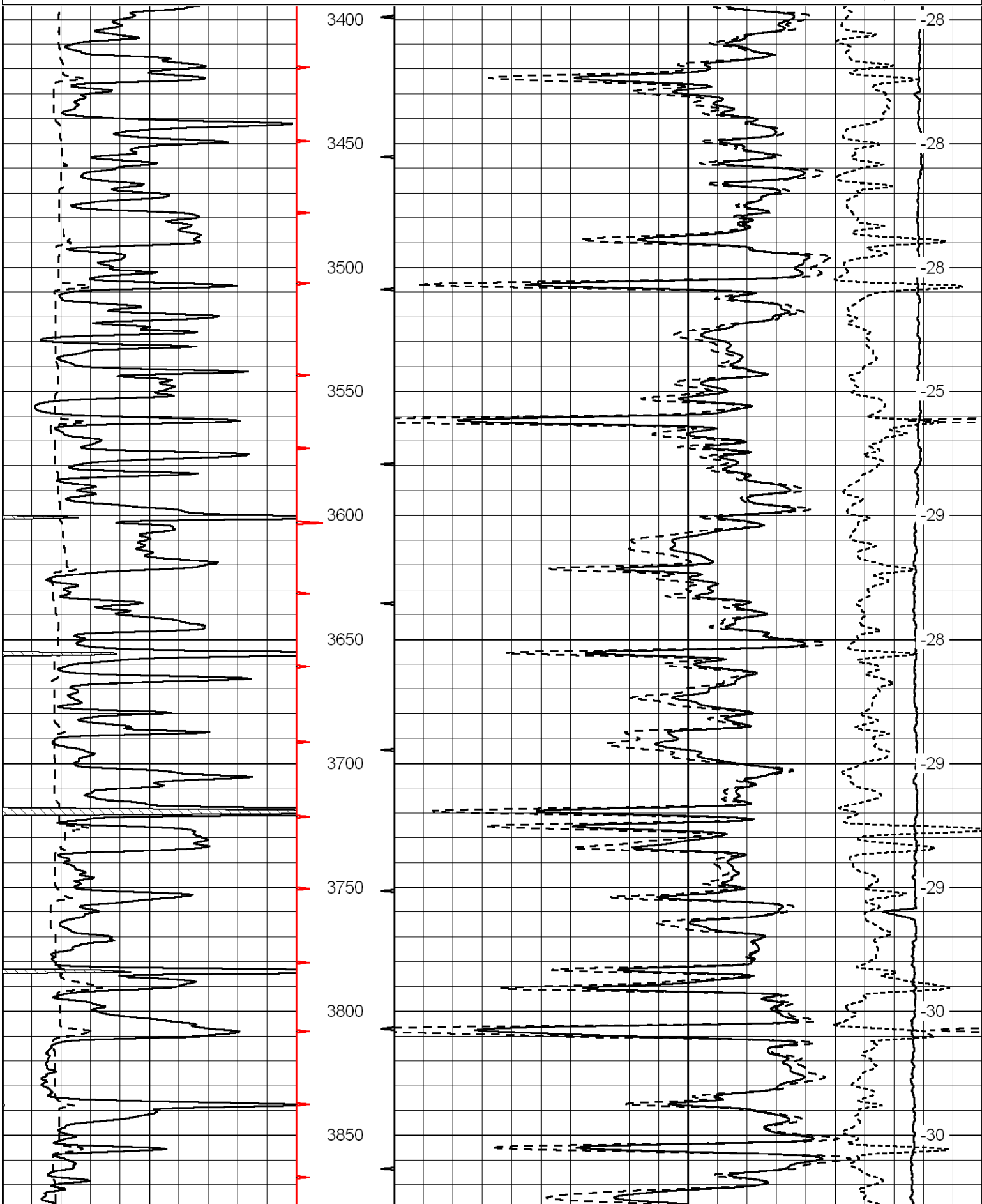
Thank you for using Log-Tech, Inc.  
(785) 625-3858

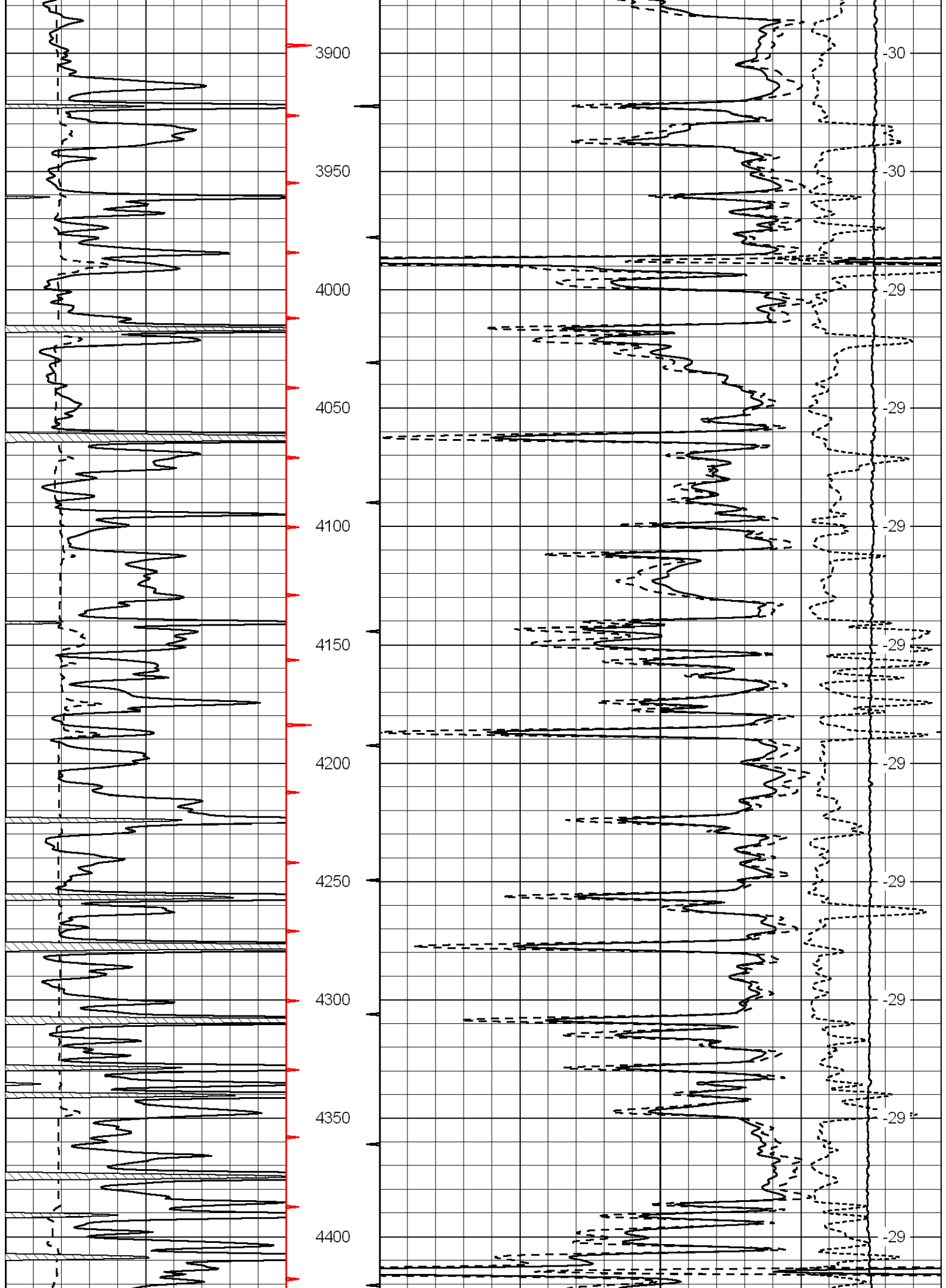
Oakley, S 24 to 474 rd. (across river), 5 W to T, 2 S, E into (follow lease road)

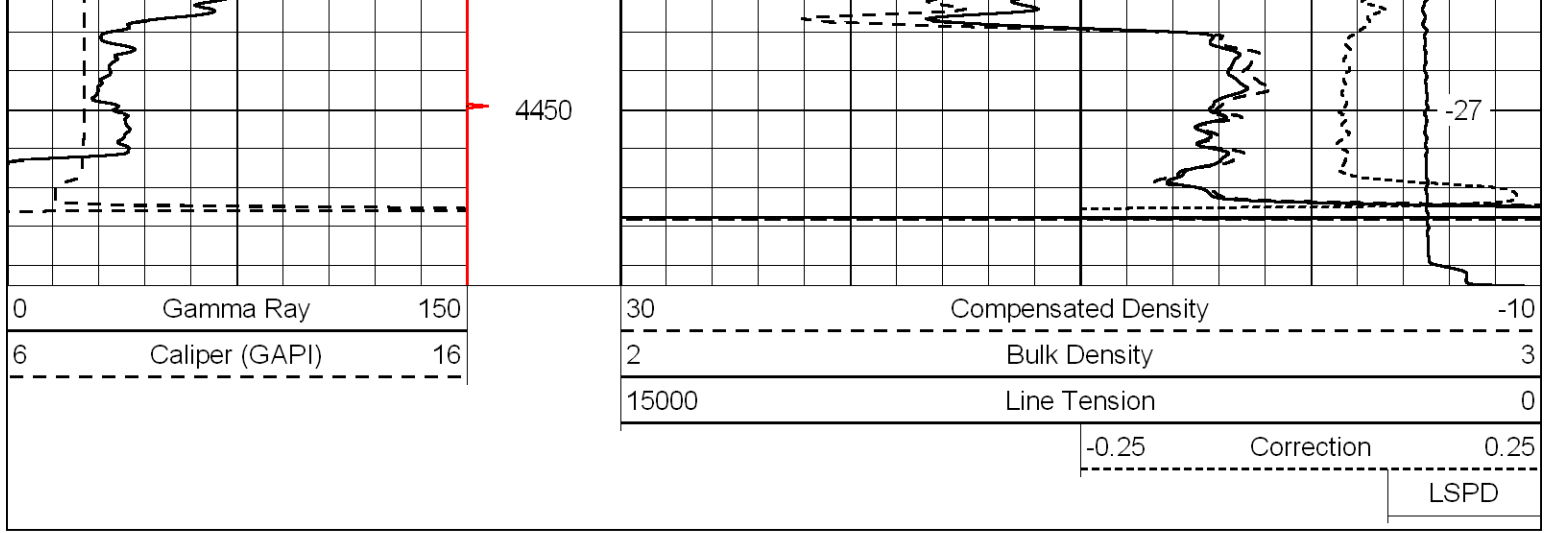
Database File: britohd.db  
 Dataset Pathname: dil/brito2in  
 Presentation Format: cdl  
 Dataset Creation: Wed May 12 04:23:45 2010  
 Charted by: Depth in Feet scaled 1:600

0	Gamma Ray	150
6	Caliper (GAPI)	16

30	Compensated Density	-10
2	Bulk Density	3
15000	Line Tension	0
	-0.25	0.25
	Correction	
		LSPD







Database File:      britohd.db  
 Dataset Pathname:    dil/brito2in  
 Presentation Format:    cndlspec  
 Dataset Creation:    Wed May 12 04:23:45 2010  
 Charted by:          Depth in Feet scaled 1:240

