



Microresistivity Log

DIGITAL LOG (785) 625-3858

API No. 15-109-20,899-00-00	Company Brito Oil Co., Inc.	Other Services CNL/CDL DIL
	Well Fairleigh No. 1-12	
	Field Wildcat	
	County Logan	State Kansas
	Location 1590' FSL & 425' FEL	
	Sec: 12	Twp: 15 S Rge: 33 W
Permanent Datum Log Measured From Drilling Measured From	Ground Level Kelly Bushing Frotkelly Bushing	Elevation 2793 5 Ft. Above Perm. Datum K.B. 2798 D.F. 2793 G.L. 2793

Date	5/12/2010
Run Number	Two
Depth Driller	4490
Depth Logger	4490
Bottom Logged Interval	4489
Top Log Interval	3400
Casing Driller	8.625 @ 220
Casing Logger	218
Bit Size	7.875
Type Fluid in Hole	Chemical
Salinity, ppm CL	4.400
Density / Viscosity	9.2 54
pH / Fluid Loss	10.5 8.0
Source of Sample	Flowline
Rm @ Meas. Temp	.75 @ 60
Rmf @ Meas. Temp	.56 @ 60
Rmc @ Meas. Temp	1.01 @ 60
Source of Rmf / Rmc	Charts
Rm @ BHT	.37 @ 123
Operating Rig Time	4 Hours
Max Rec. Temp. F	123
Equipment Number	7
Location	Havs
Recorded By	K. Bange
Witnessed By	Jeff Christian

<<< Fold Here >>>

All interpretations are opinions based on inferences from electrical or other measurements and we cannot and do not guarantee the accuracy or correctness of any interpretation, and we shall not, except in the case of gross or willful negligence on our part, be liable or responsible for any loss, costs, damages, or expenses incurred or sustained by anyone resulting from any interpretation made by any of our officers, agents or employees. These interpretations are also subject to our general terms and conditions set out in our current Price Schedule.

Comments

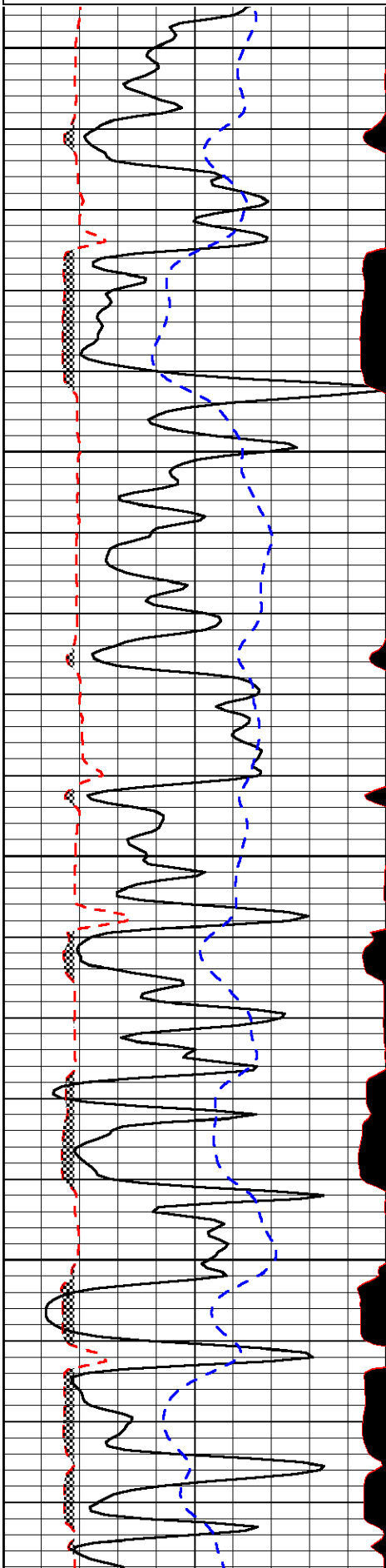
Thank you for using Log-Tech, Inc.
(785) 625-3858

Oakley, S 24 to 474 rd. (across river), 5 W to T, 2 S, E into (follow lease road)

Database File: britohd.db
 Dataset Pathname: dil/brito2in
 Presentation Format: micro
 Dataset Creation: Wed May 12 04:23:45 2010
 Charted by: Depth in Feet scaled 1:240

0	Gamma Ray	150
6	MCAL (GAPI)	16
2.875	Mud Cake (GAPI)	7.875
-200	SP	0

0	Micro Inverse 1 X 1	40
0	Micro Normal 2"	40
10000	Line Weight	0
	LSPD	

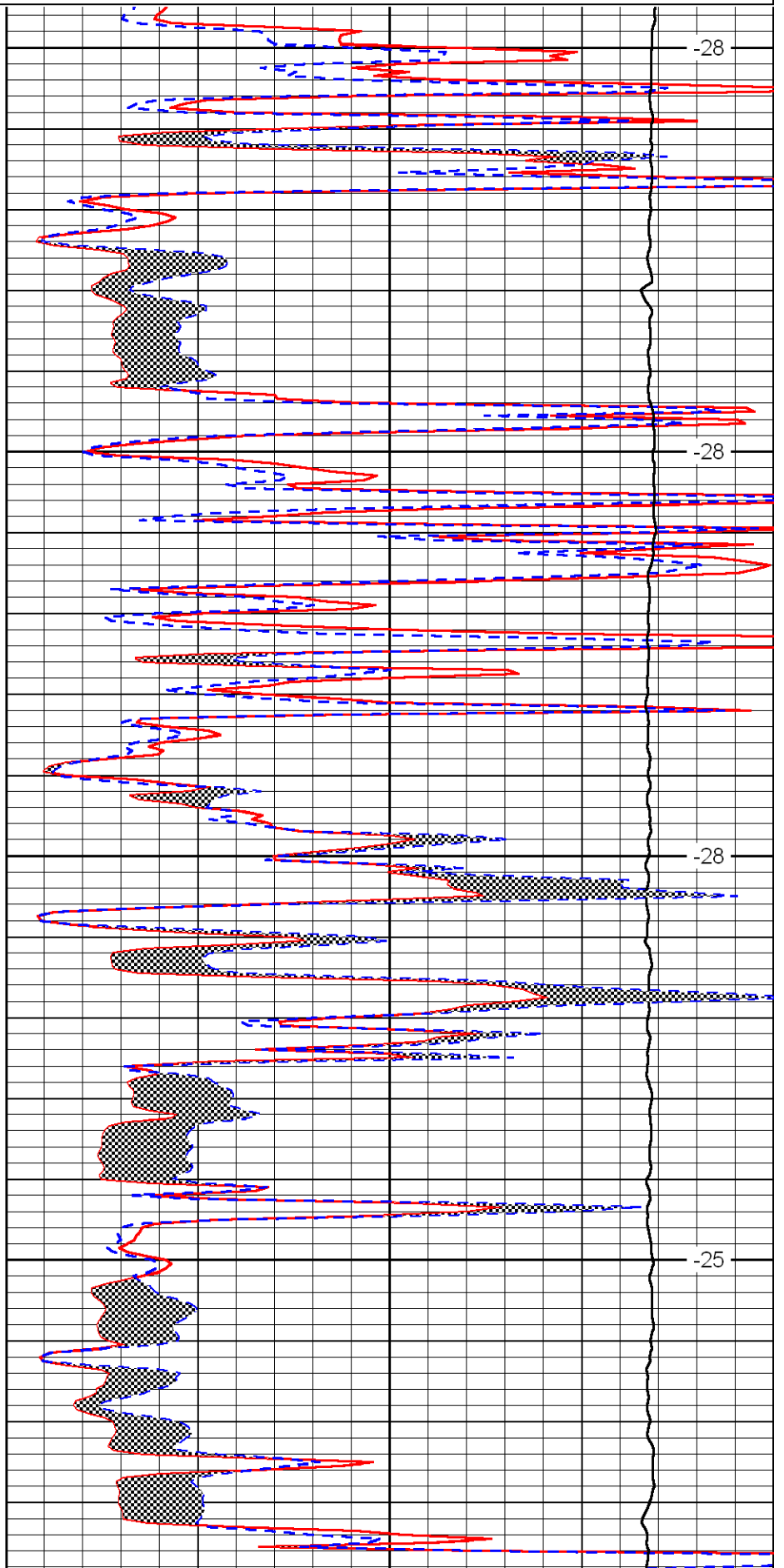


3400

3450

3500

3550

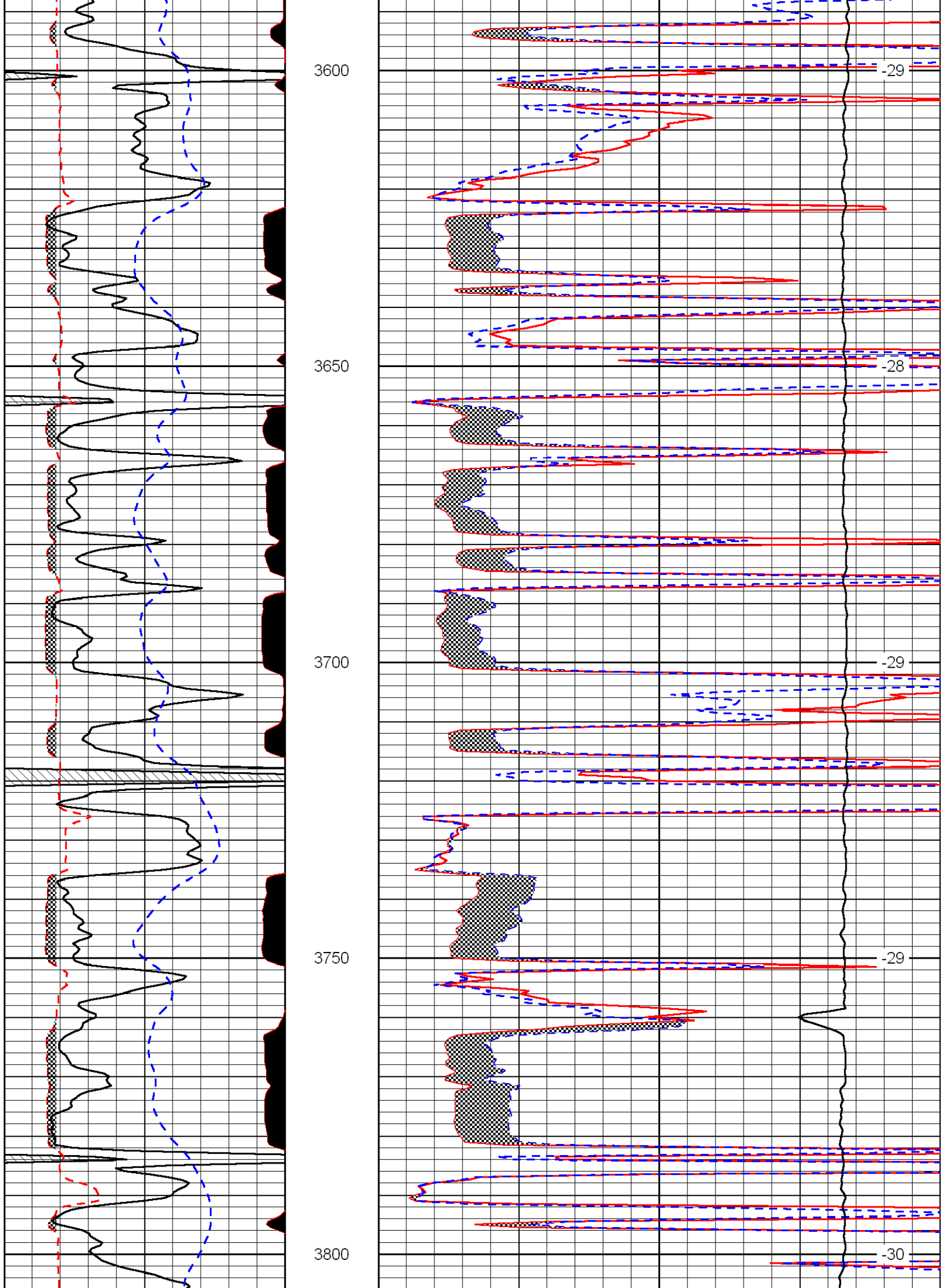


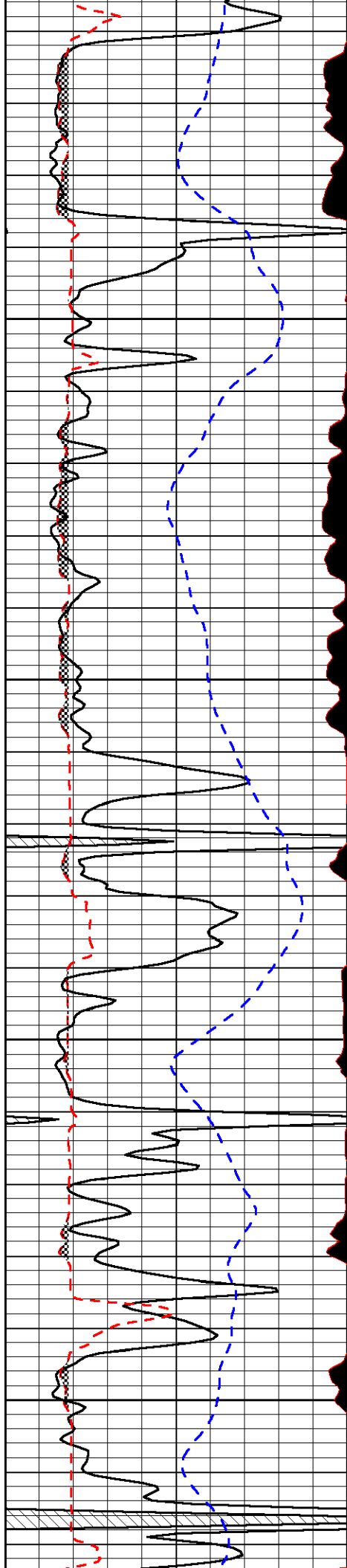
-28

-28

-28

-25



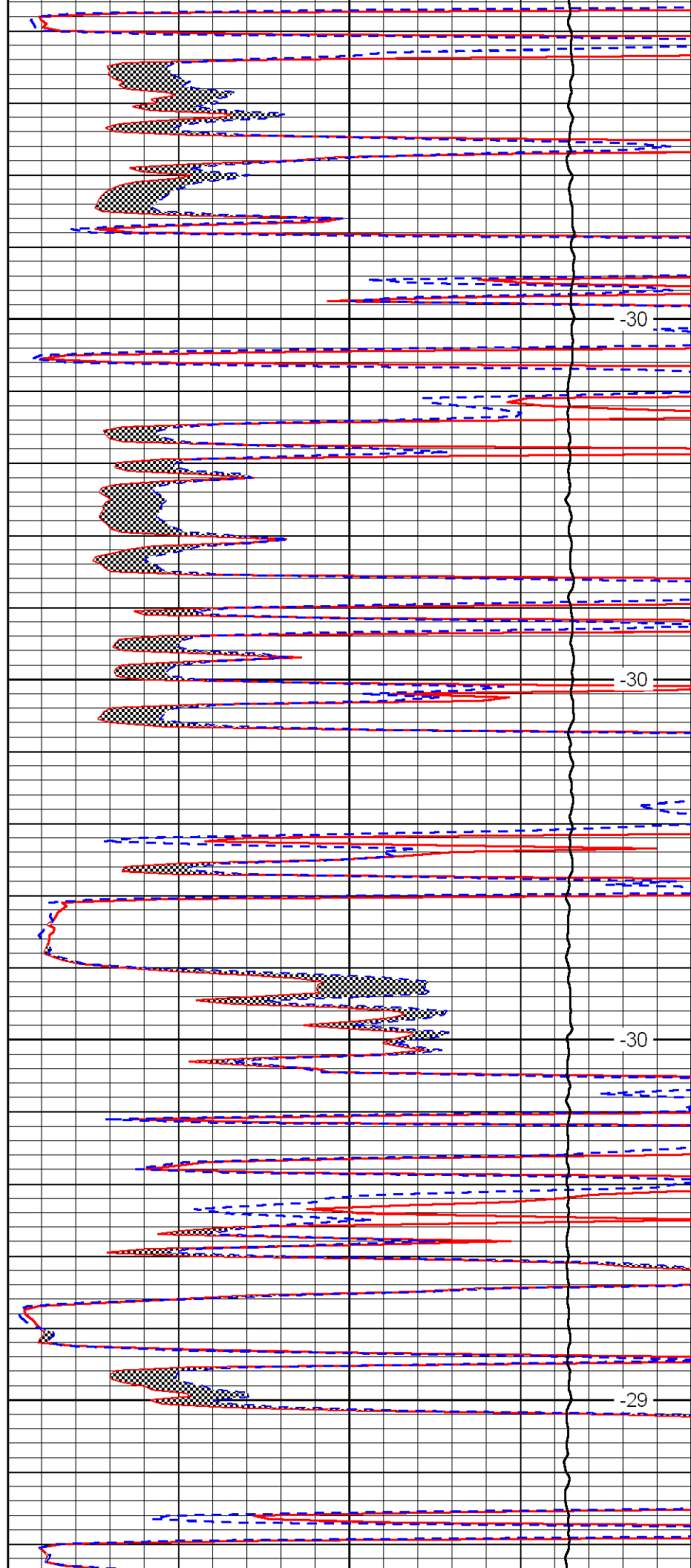


3850

3900

3950

4000

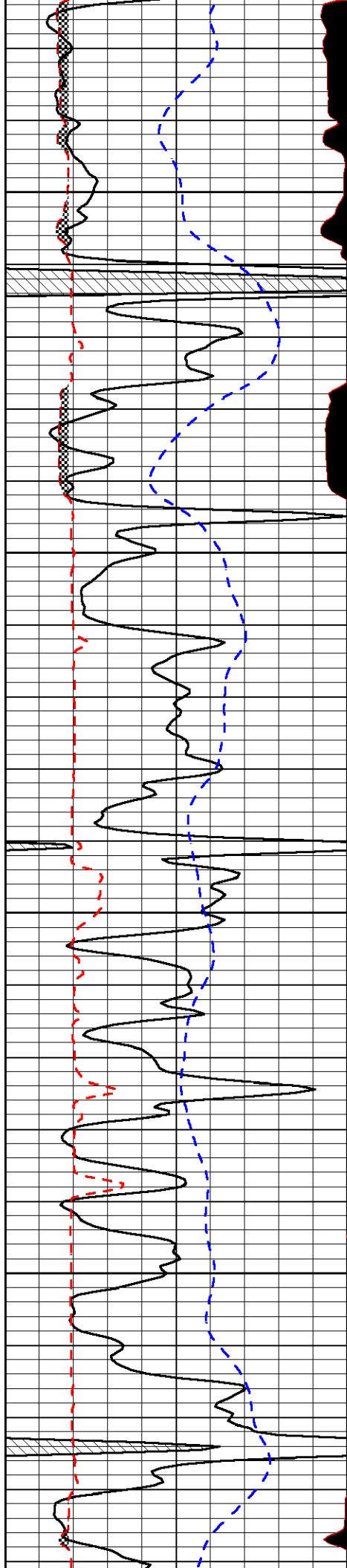


-30

-30

-30

-29

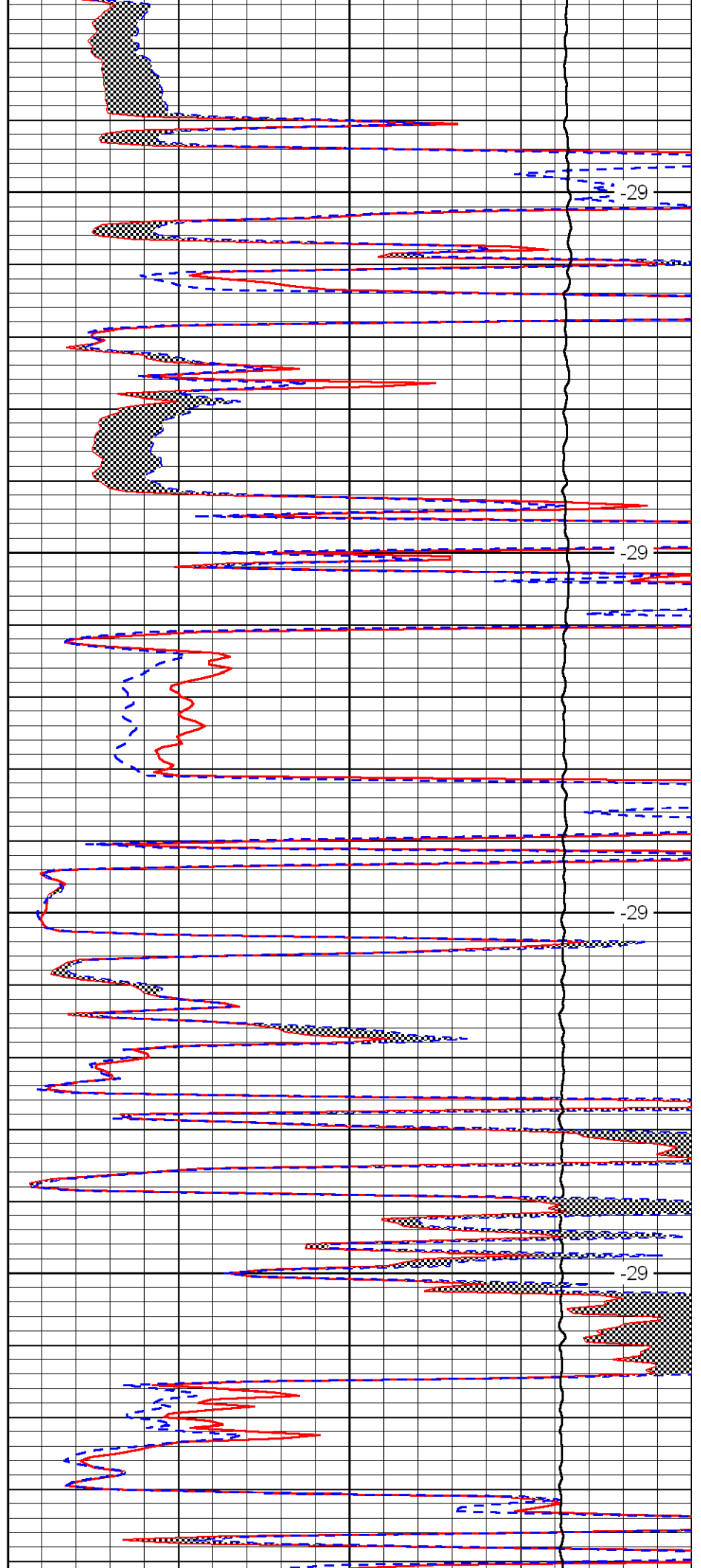


4050

4100

4150

4200

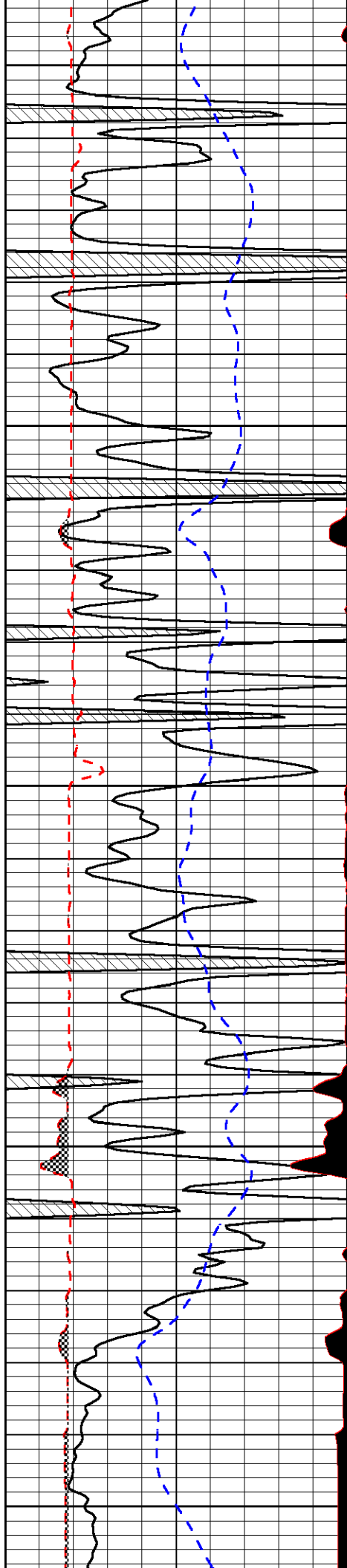


-29

-29

-29

-29



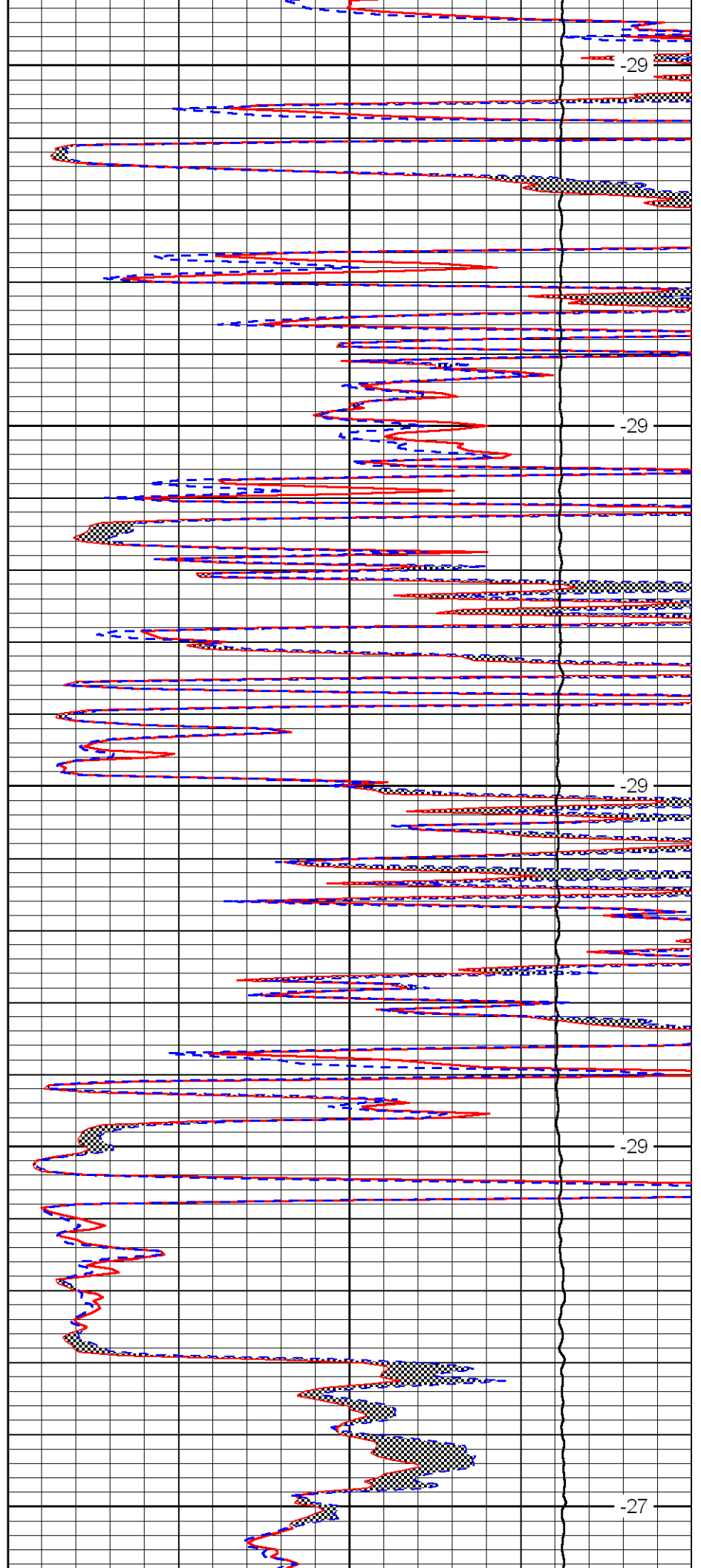
4250

4300

4350

4400

4450



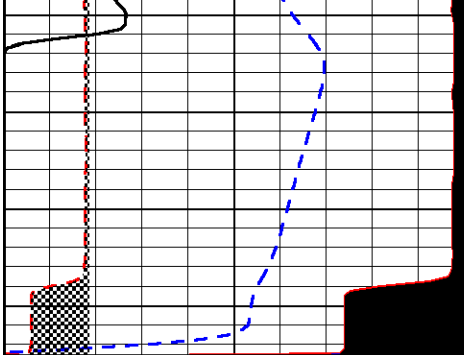
-29

-29

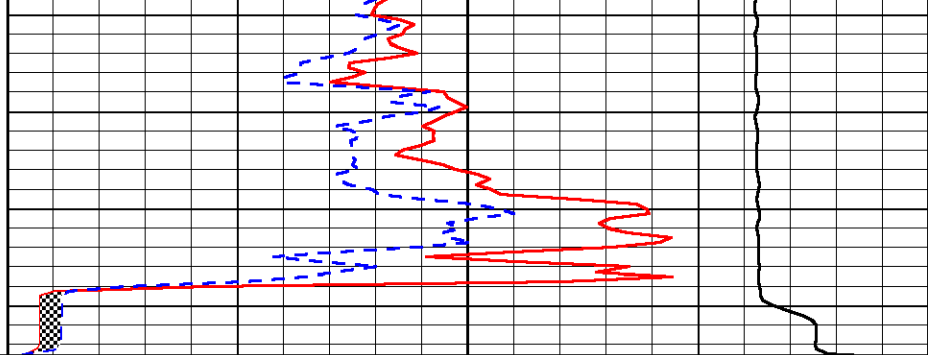
-29

-29

-27



0	Gamma Ray	150
6	MCAL (GAPI)	16
2.875	Mud Cake (GAPI)	7.875
-200	SP	0



0	Micro Inverse 1 X 1	40
0	Micro Normal 2''	40
10000	Line Weight	0

LSPD