



Microresistivity Log

DIGITAL LOG (785) 625-3858

API No. 15-093-21,855-00-00	Company Lebsack Oil Production	Well Van Doren No. 14-4	Field Christabelle
	County Kearny	State Kansas	
	Location 1320' FSL & 500' FEL		Other Services CNL/CDL DIL
	Sec: 14	Twp: 21S	Rge: 35W
Permanent Datum Log Measured From Drilling Measured From	Ground Level Kelly Bushing From Kelly Bushing	Elevation 3088 12 Ft. Above Perm. Datum	K.B. 3100 D.F. 3088 G.L. 3088

Date	04/11/2010
Run Number	Two
Depth Driller	5000
Depth Logger	5004
Bottom Logged Interval	5003
Top Log Interval	2600
Casing Driller	8.625 @ 431
Casing Logger	432
Bit Size	7.875
Type Fluid in Hole	Chemical
Salinity, ppm CL	3,300
Density / Viscosity	9.2 62
pH / Fluid Loss	9.5 8.0
Source of Sample	Flowline
Rm @ Meas. Temp	1.3 @ 78
Rmf @ Meas. Temp	.98 @ 78
Rmc @ Meas. Temp	1.76 @ 78
Source of Rmf / Rmc	Charts
Rm @ BHT	.79 @ 128
Operating Rig Time	4 Hours
Max Rec. Temp. F	128
Equipment Number	17
Location	Hays
Recorded By	Mike Garrison
Witnessed By	Wayne Lebsack

<<< Fold Here >>>

All interpretations are opinions based on inferences from electrical or other measurements and we cannot and do not guarantee the accuracy or correctness of any interpretation, and we shall not, except in the case of gross or willful negligence on our part, be liable or responsible for any loss, costs, damages, or expenses incurred or sustained by anyone resulting from any interpretation made by any of our officers, agents or employees. These interpretations are also subject to our general terms and conditions set out in our current Price Schedule.

Comments

Thank you for using Log-Tech, Inc.
(785) 625-3858

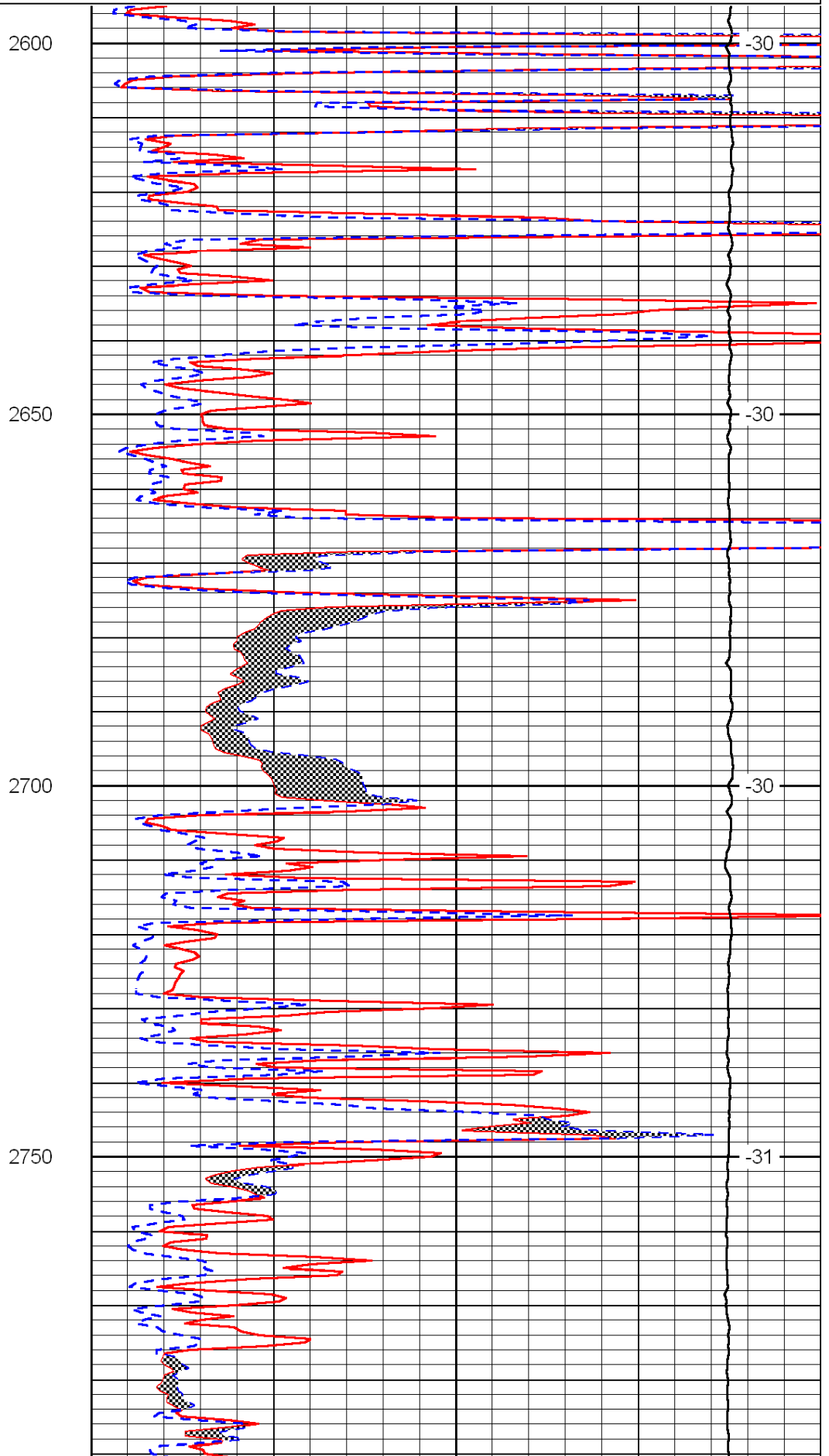
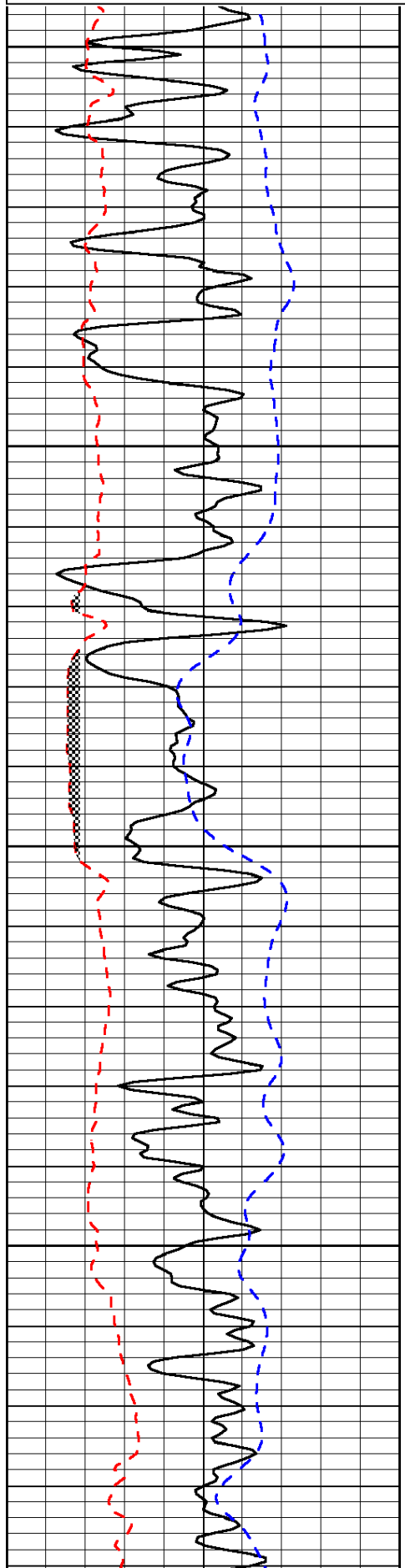
Scott City, South to the county Line, 11 West, 2 South, 1/4 South, East Into

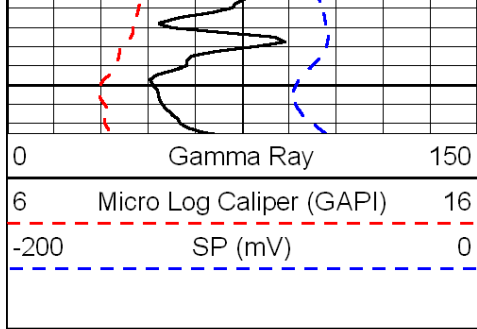
Database File: c:\warrior\data\lebsack_van doren no. 14-4\lebsack.db
 Dataset Pathname: dil/lebstck
 Presentation Format: micro
 Dataset Creation: Sun Apr 11 20:24:20 2010
 Charted by: Depth in Feet scaled 1:240

0	Gamma Ray	150
6	Micro Log Caliper (GAPI)	16
-200	SP (mV)	0

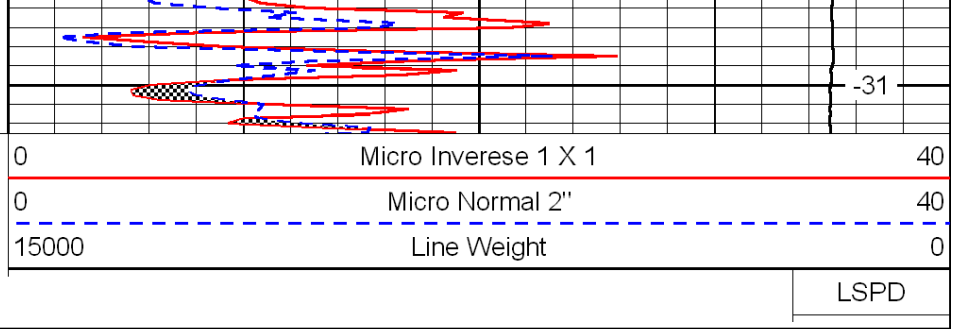
0	Micro Inverse 1 X 1	40
0	Micro Normal 2"	40
15000	Line Weight	0

LSPD

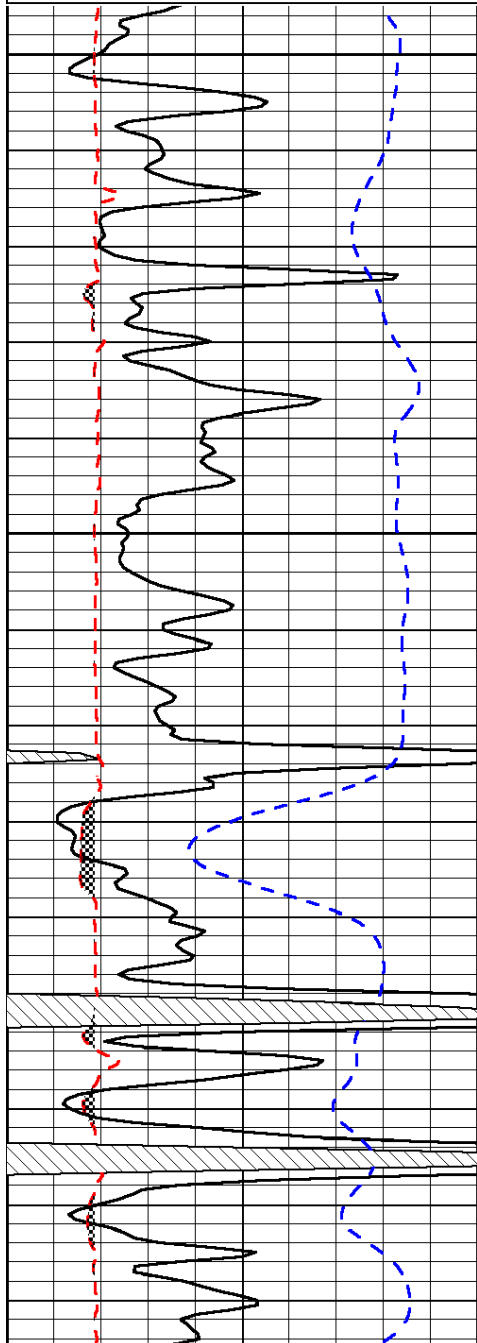
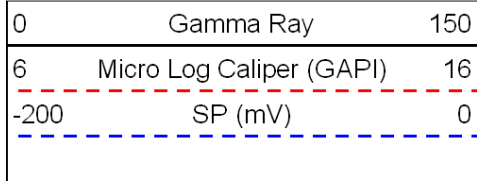




2800



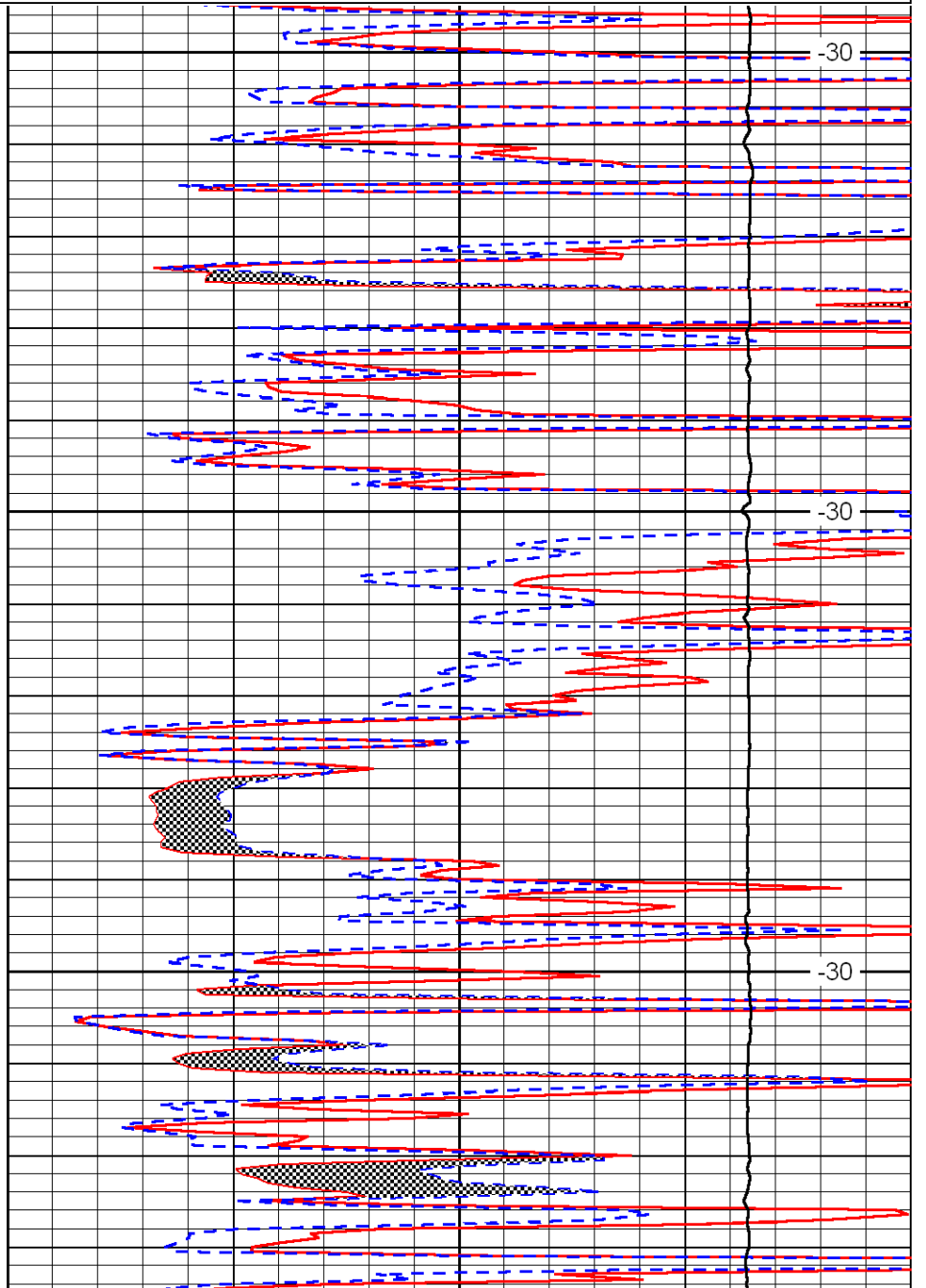
Database File: c:\warrior\data\lebsack_van doren no. 14-4\lebsack.db
 Dataset Pathname: dil/lebstck
 Presentation Format: micro
 Dataset Creation: Sun Apr 11 20:24:20 2010
 Charted by: Depth in Feet scaled 1:240



4500

4550

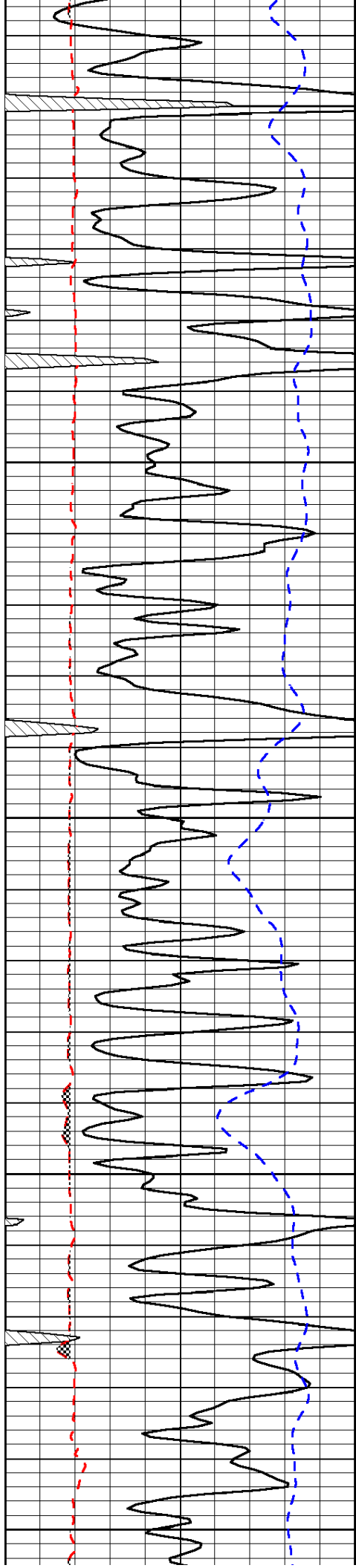
4600



-30

-30

-30



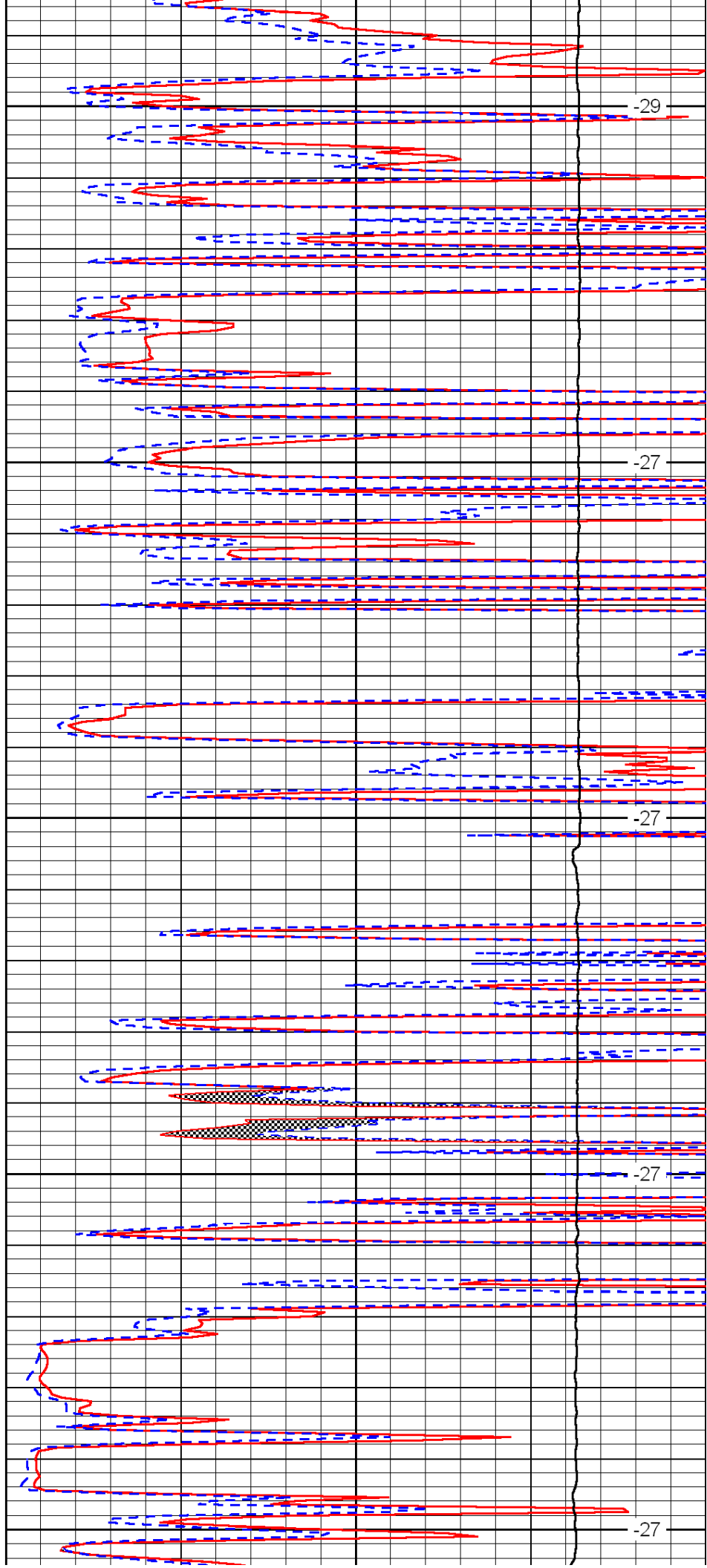
4650

4700

4750

4800

4850



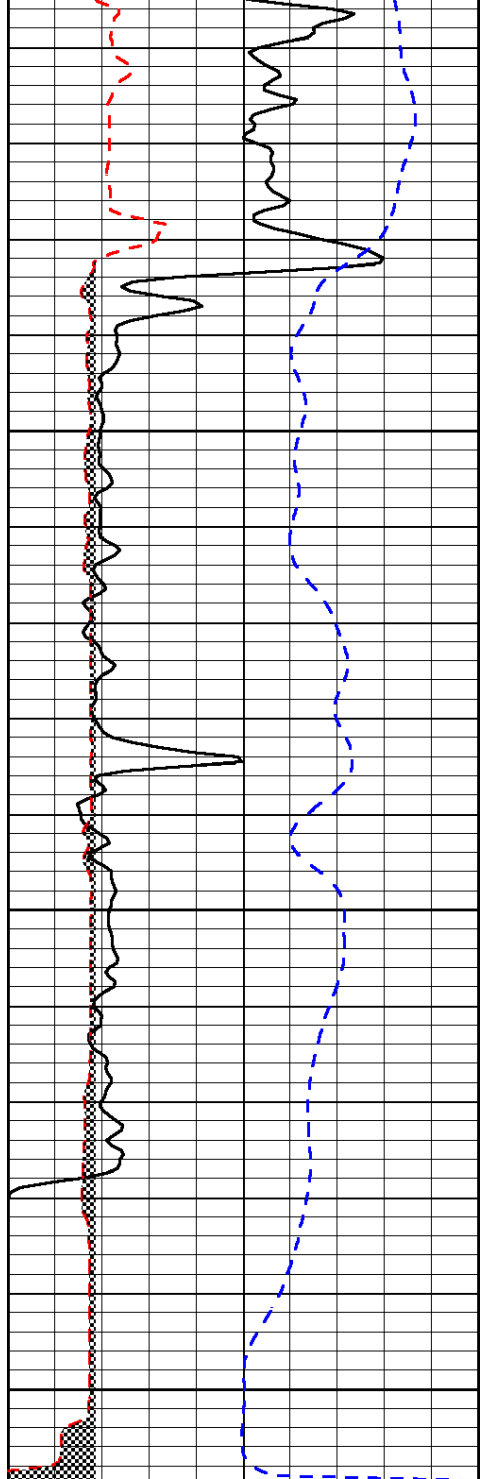
-29

-27

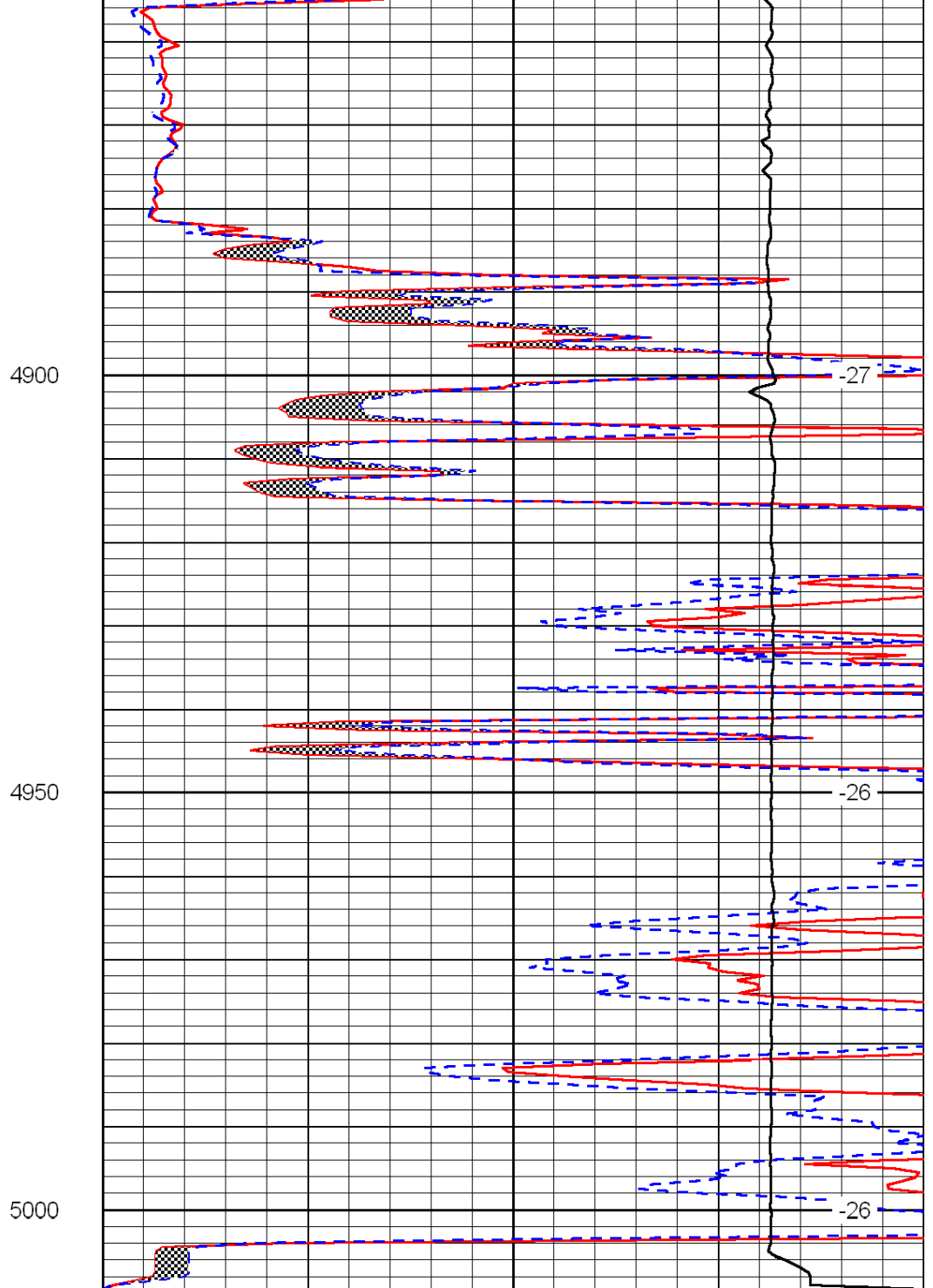
-27

-27

-27



0	Gamma Ray	150
6	Micro Log Caliper (GAPI)	16
-200	SP (mV)	0



0	Micro Inverse 1 X 1	40
0	Micro Normal 2''	40
15000	Line Weight	0

LSPD