



**SUPERIOR  
Hays,  
Kansas**

**MICRO  
LOG**

Company PIONEER EXPLORATION, IIC.  
Well GREEN #2  
Field SPIVEY-GRABS BASIL  
County HARPER  
State KANSAS

Company PIONEER EXPLORATION, LLC.  
Well GREEN #2  
Field SPIVEY-GRABS BASIL  
County HARPER State KANSAS

Location: API #: 15-077-21678  
890' FSL & 1650' FEL  
SEC 29 TWP 31S RGE 9W  
Permanent Datum GROUND LEVEL Elevation 1660'  
Log Measured From KELLY BUSHING 10' A.G.L.  
Drilling Measured From KELLY BUSHING  
Other Services  
CDL/CNL  
DIL  
Elevation  
K.B. 1670  
D.F.  
G.L. 1660

Date	4-5-10
Run Number	TWO
Depth Driller	4600
Depth Logger	4600
Bottom Logged Interval	4598
Top Log Interval	2400
Casing Driller	225
Casing Logger	NA
Bit Size	7.875
Type Fluid in Hole	CHEMICAL MUD
Density / Viscosity	9.4 / 50
pH / Fluid Loss	9.0 / 12.0
Source of Sample	FLOWLINE
Rim @ Meas. Temp	0.65 @ 94F
Rmf @ Meas. Temp	0.49 @ 94F
Rmc @ Meas. Temp	0.78 @ 94F
Source of Rmf / Rmc	MEASURED
Rm @ BHT	.500 @ 121F
Time Circulation Stopped	3 HOURS
Time Logger on Bottom	8:30 A.M.
Maximum Recorded Temperature	121F
Equipment Number	860
Location	HAYS, KS.
Recorded By	RUPP
Witnessed By	PAT DEENIHAN

<<< Fold Here >>>

All interpretations are opinions based on inferences from electrical or other measurements and we cannot and do not guarantee the accuracy or correctness of any interpretation, and we shall not, except in the case of gross or willful negligence on our part, be liable or responsible for any loss, costs, damages, or expenses incurred or sustained by anyone resulting from any interpretation made by any of our officers, agents or employees. These interpretations are also subject to our general terms and conditions set out in our current Price Schedule.

Comments

SUPERIOR WELL SERVICES  
785-628-6395  
THANK YOU FOR YOUR BUSINESS  
DIRECTIONS: SHARON, EAST TO C.L., 2E TO RD. #150, 4 1/2N, W INTO.

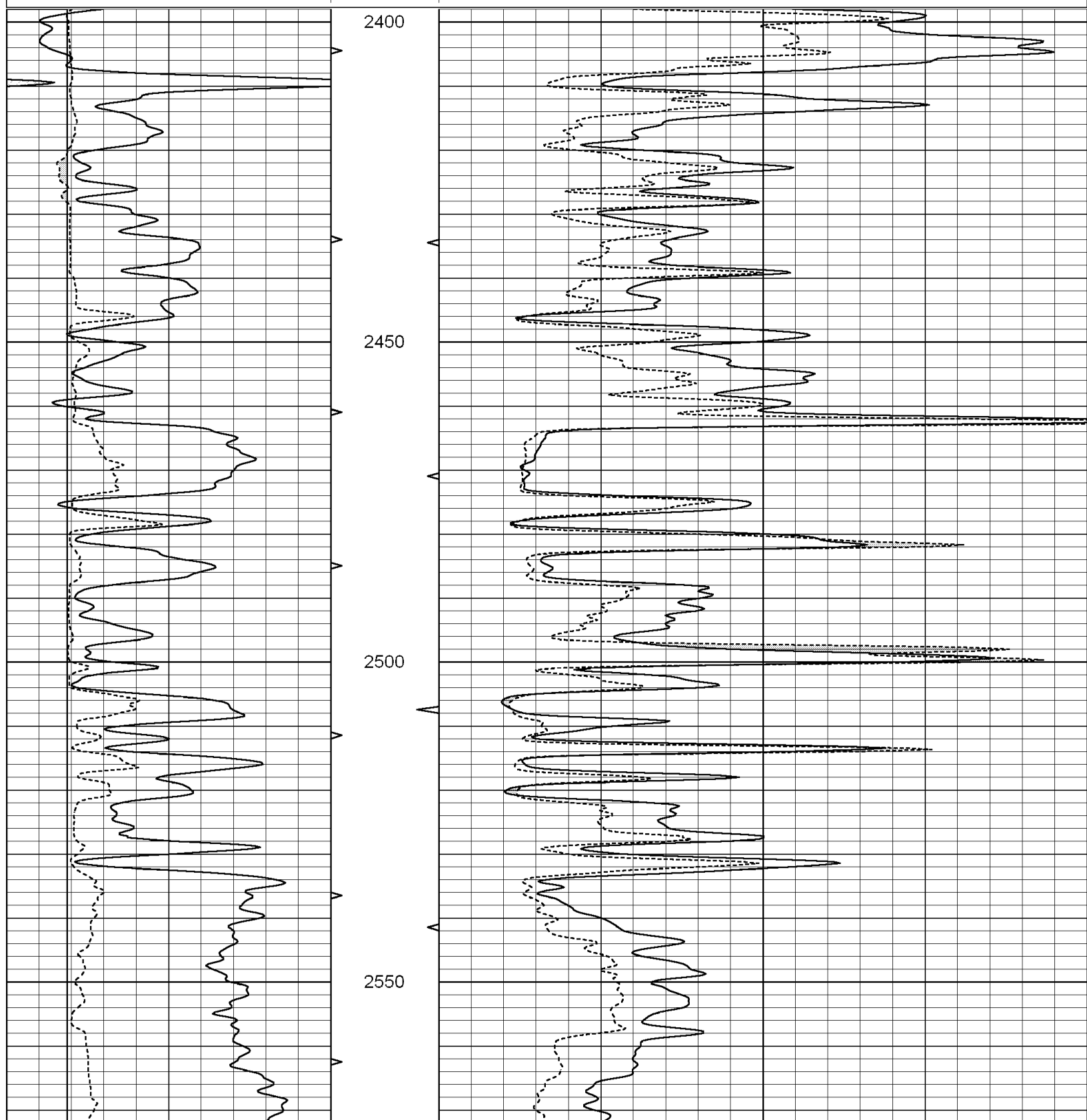


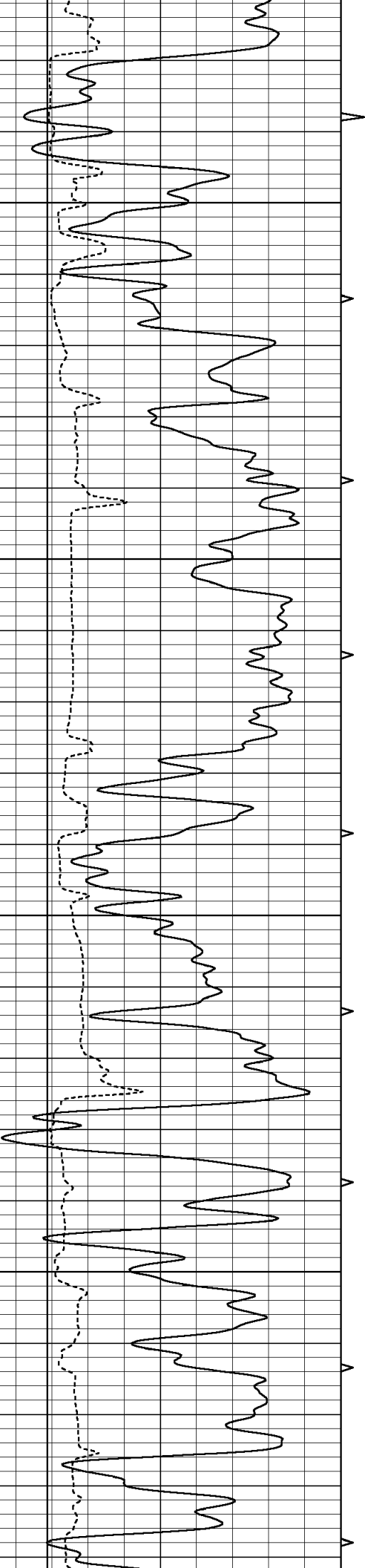
SUPERIOR  
Hays,  
Kansas

**MAIN SECTION**

Database File: 004624ddn.db  
 Dataset Pathname: pass6A  
 Presentation Format: micro  
 Dataset Creation: Mon Apr 05 13:28:09 2010  
 Charted by: Depth in Feet scaled 1:240

0	GAMMA RAY (GAPI)	150	ABHV	0	MEL1.5 (Ohm-m)	20
6	CALIPER (in)	16	10 (ft3)	0	MEL2.0 (Ohm-m)	20
			TBHV			
			0 (ft3)	10		



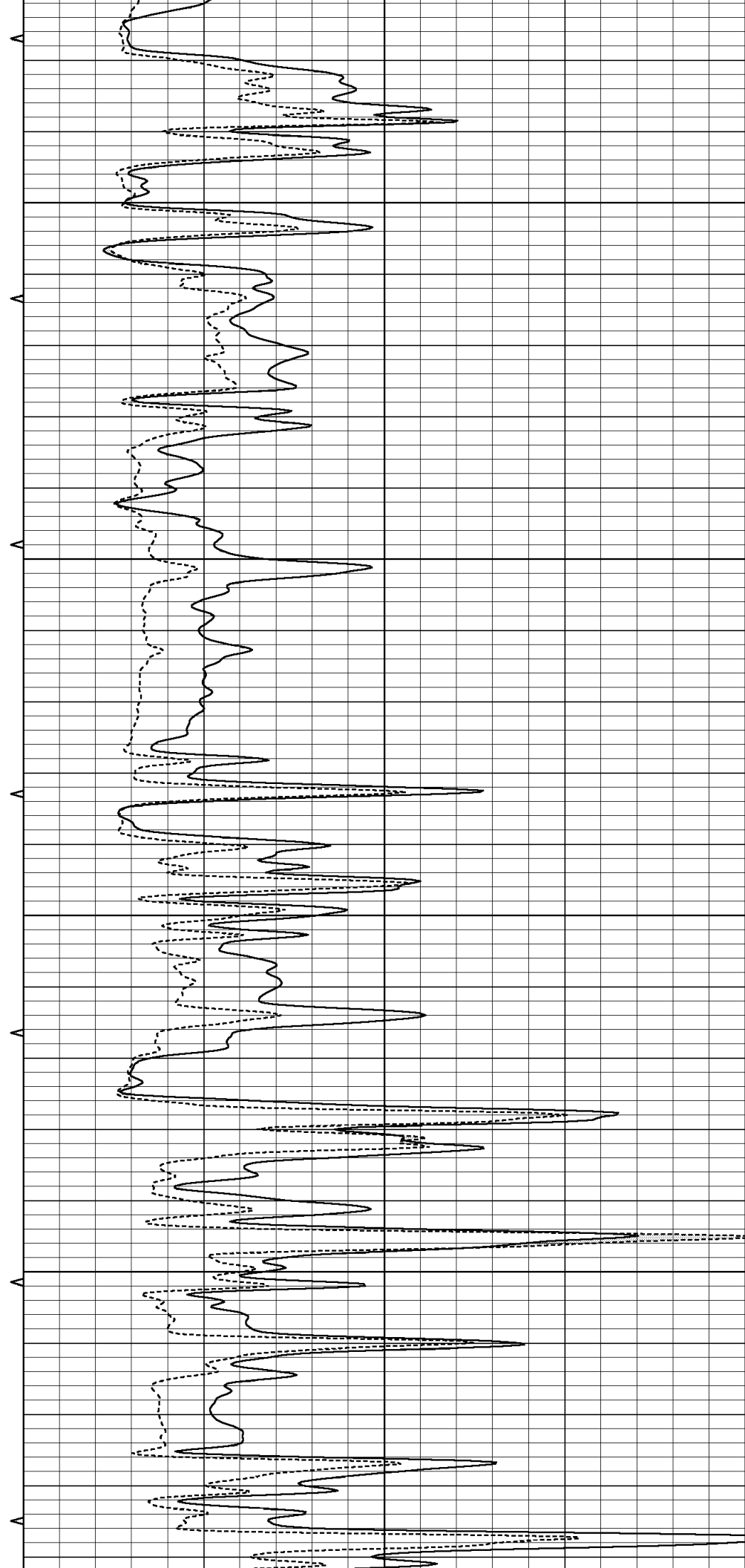


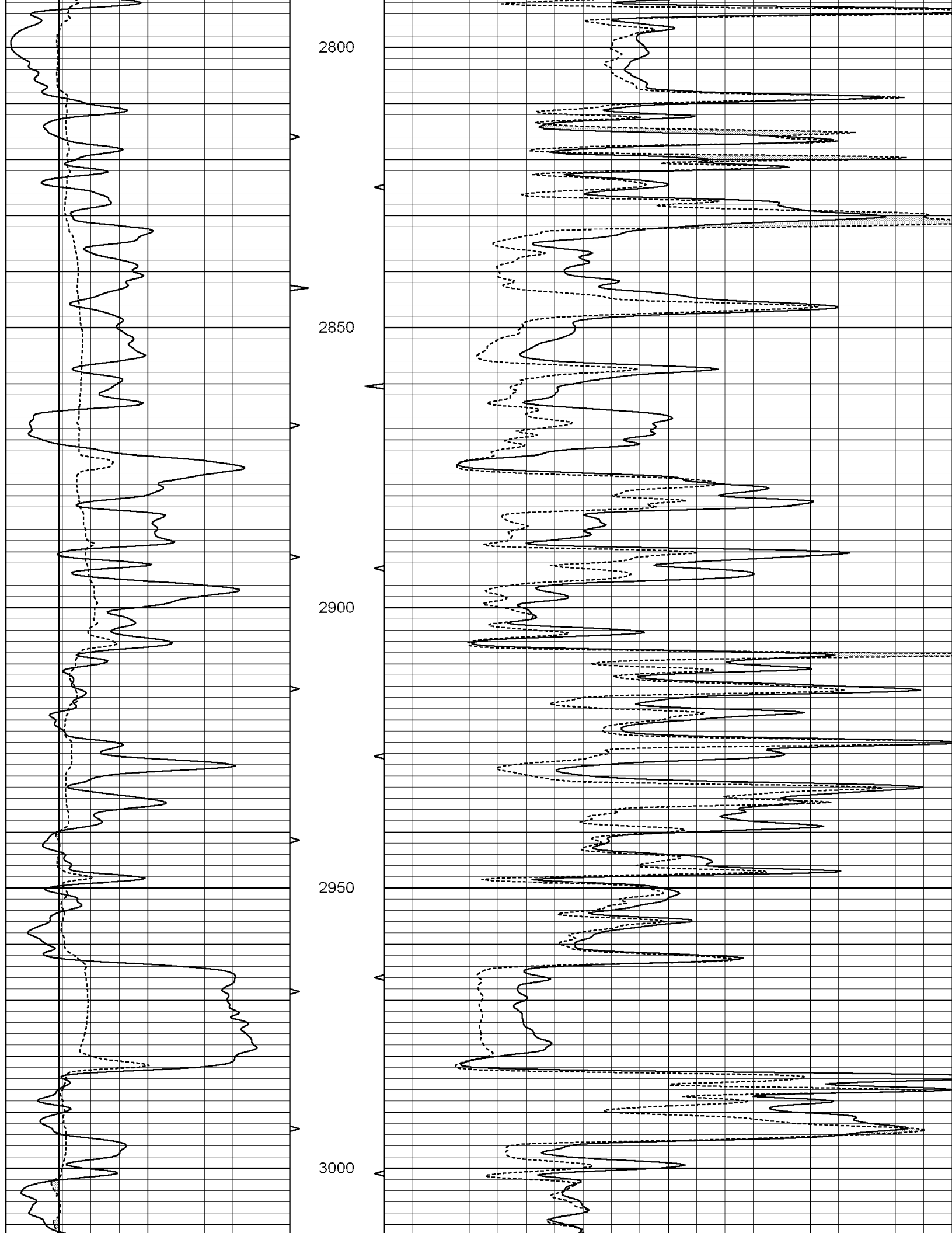
2600

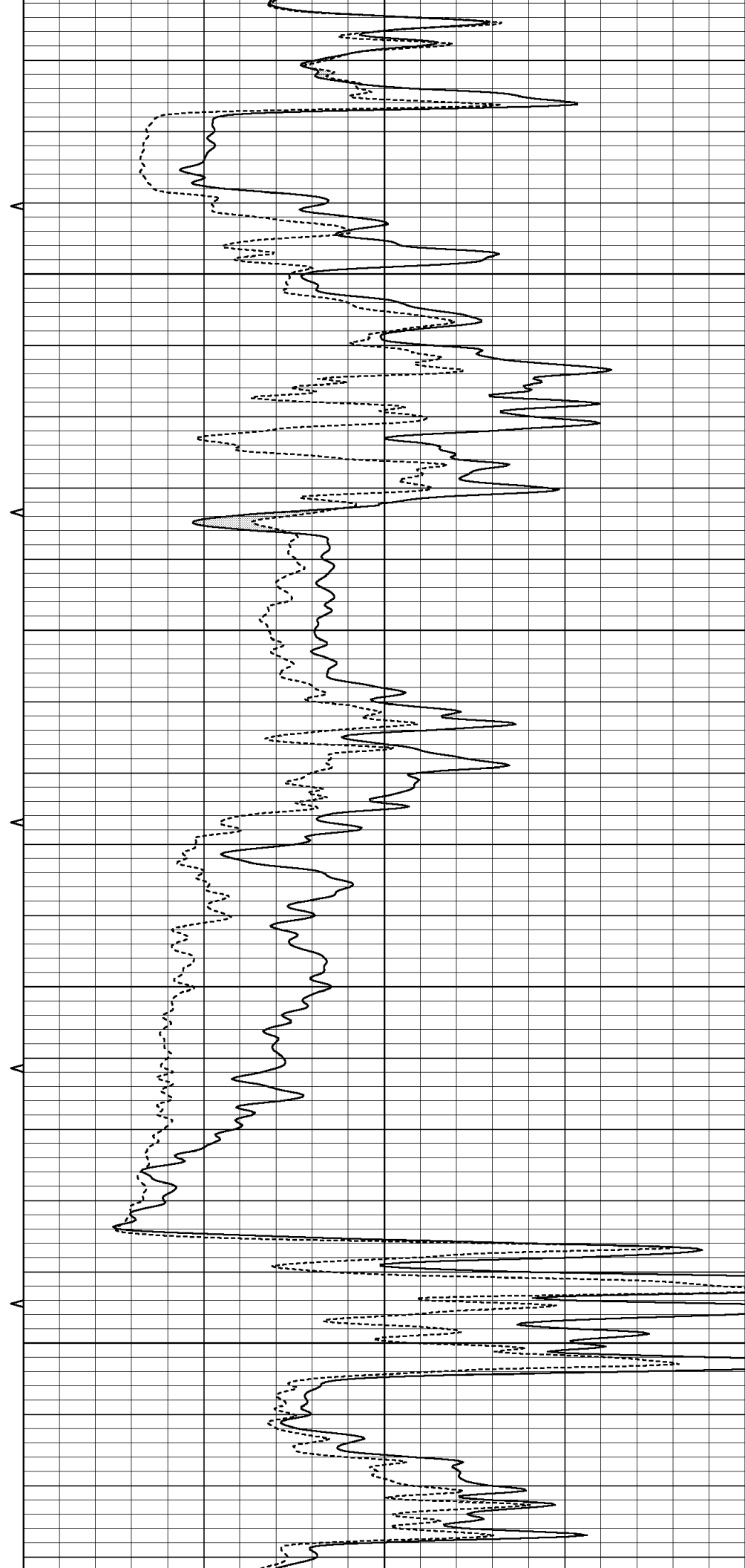
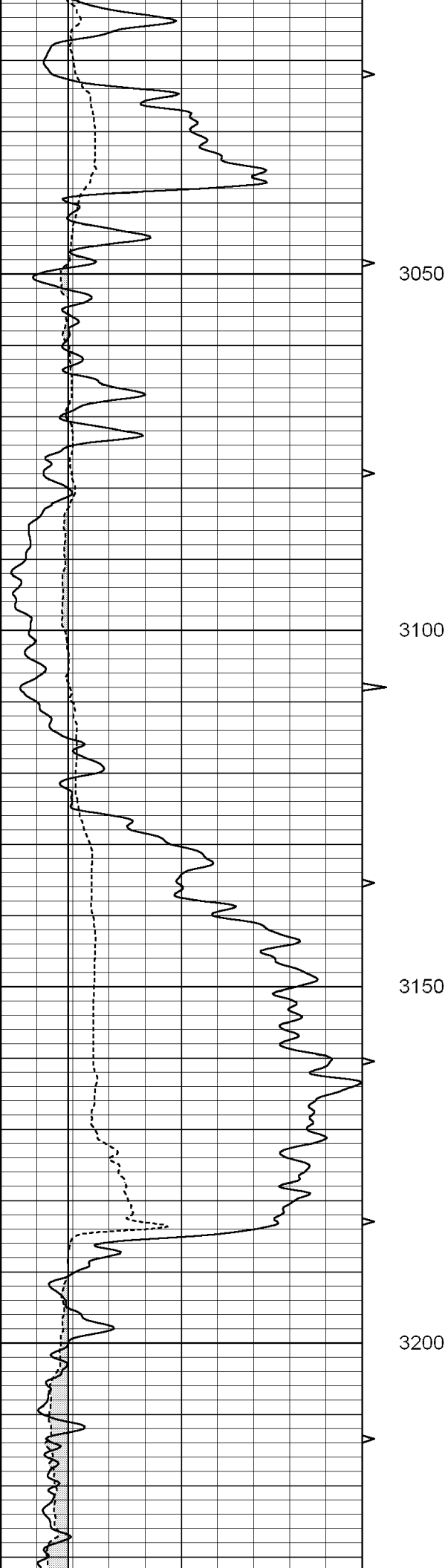
2650

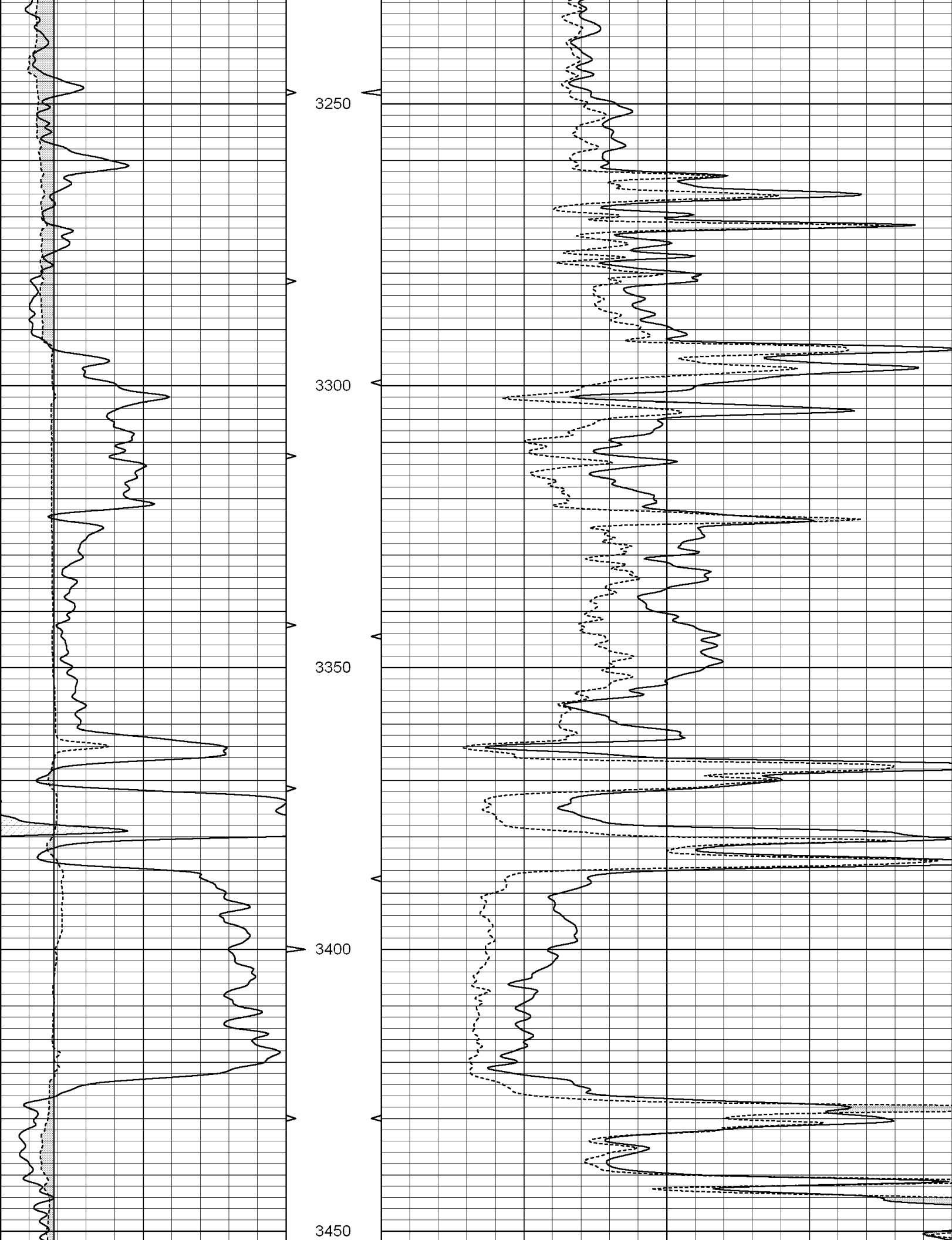
2700

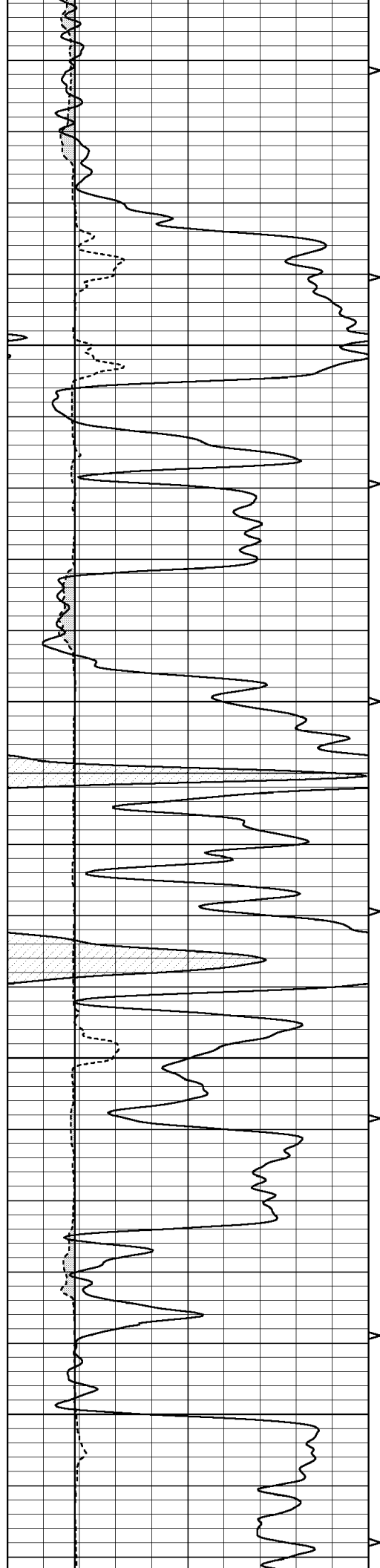
2750









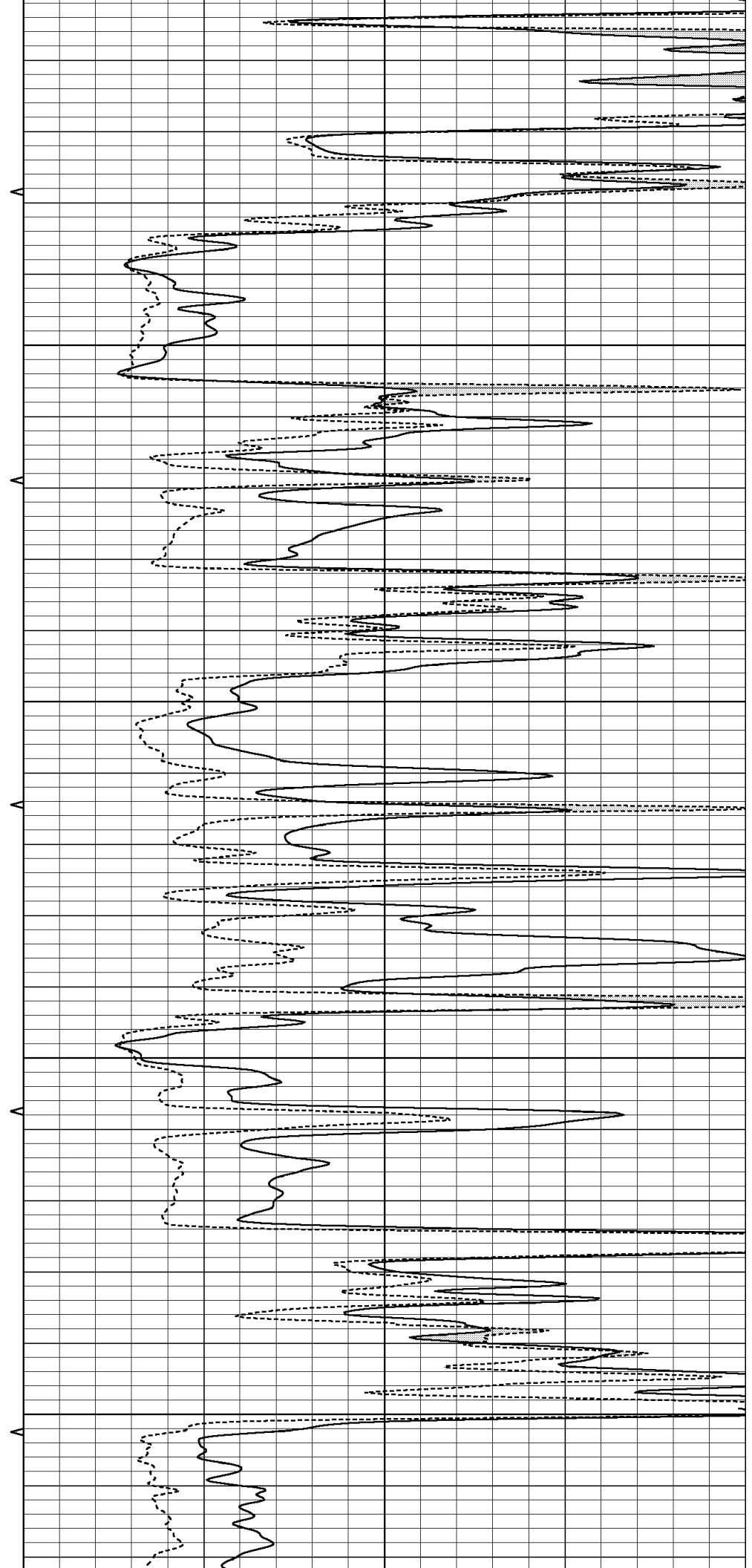


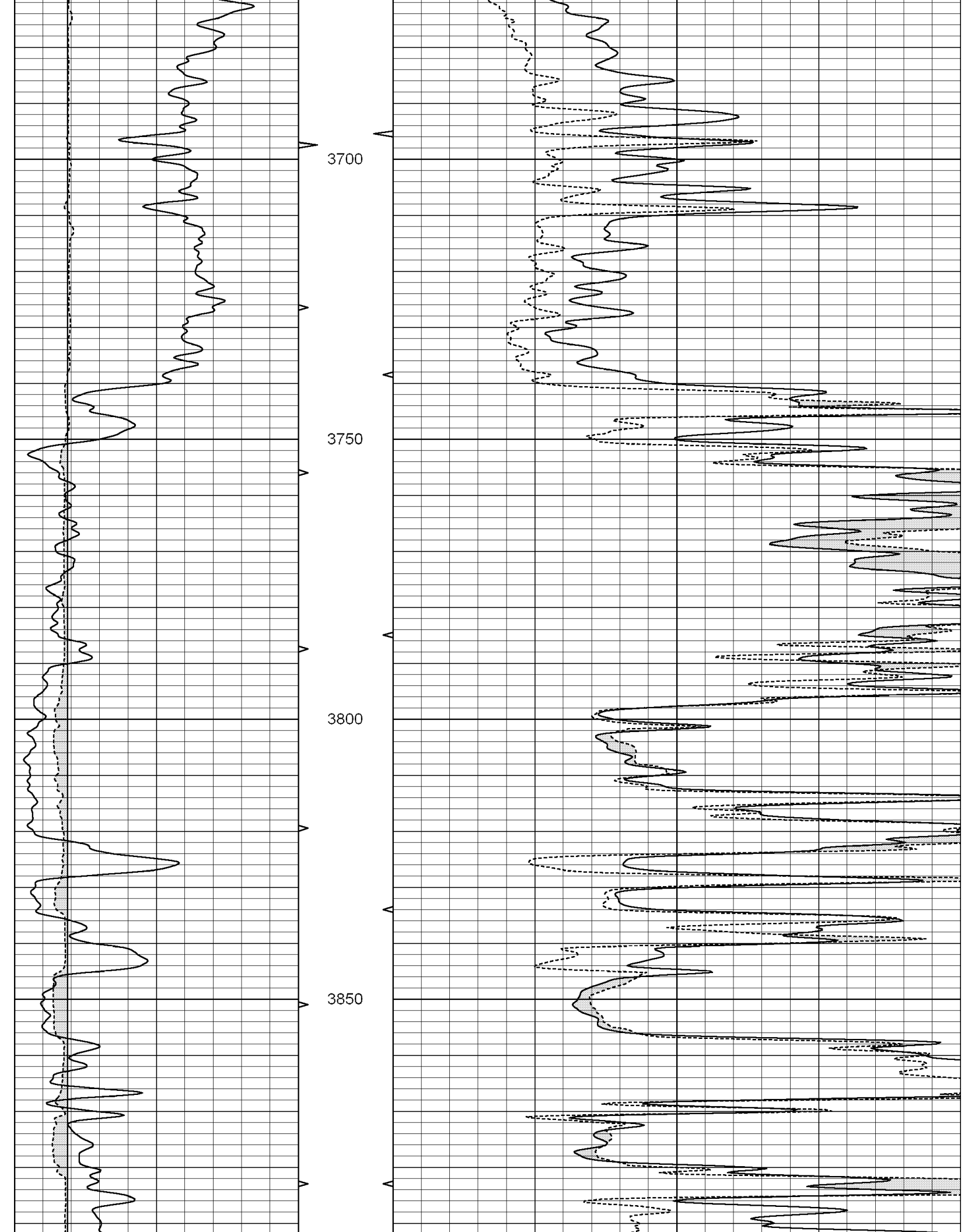
3500

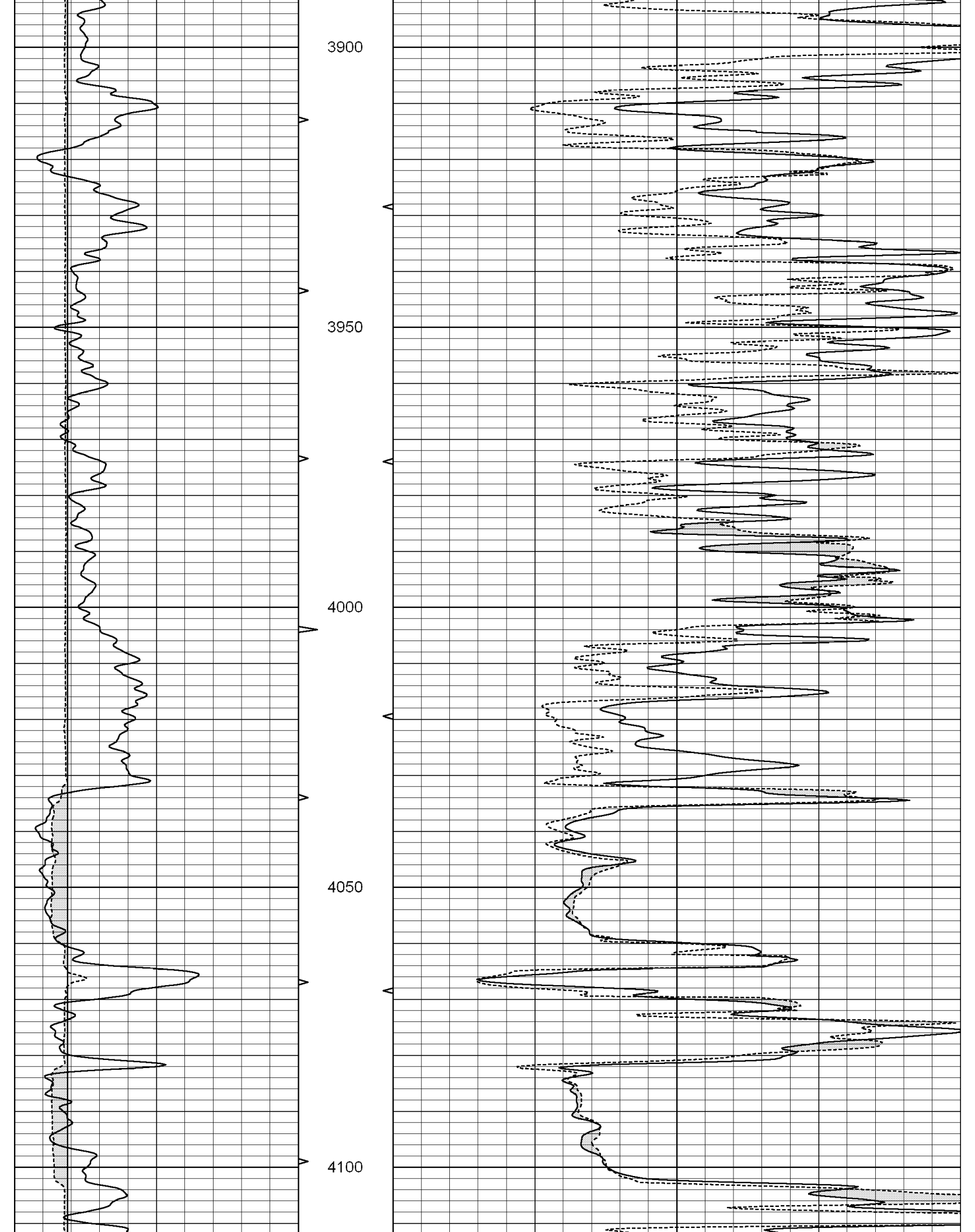
3550

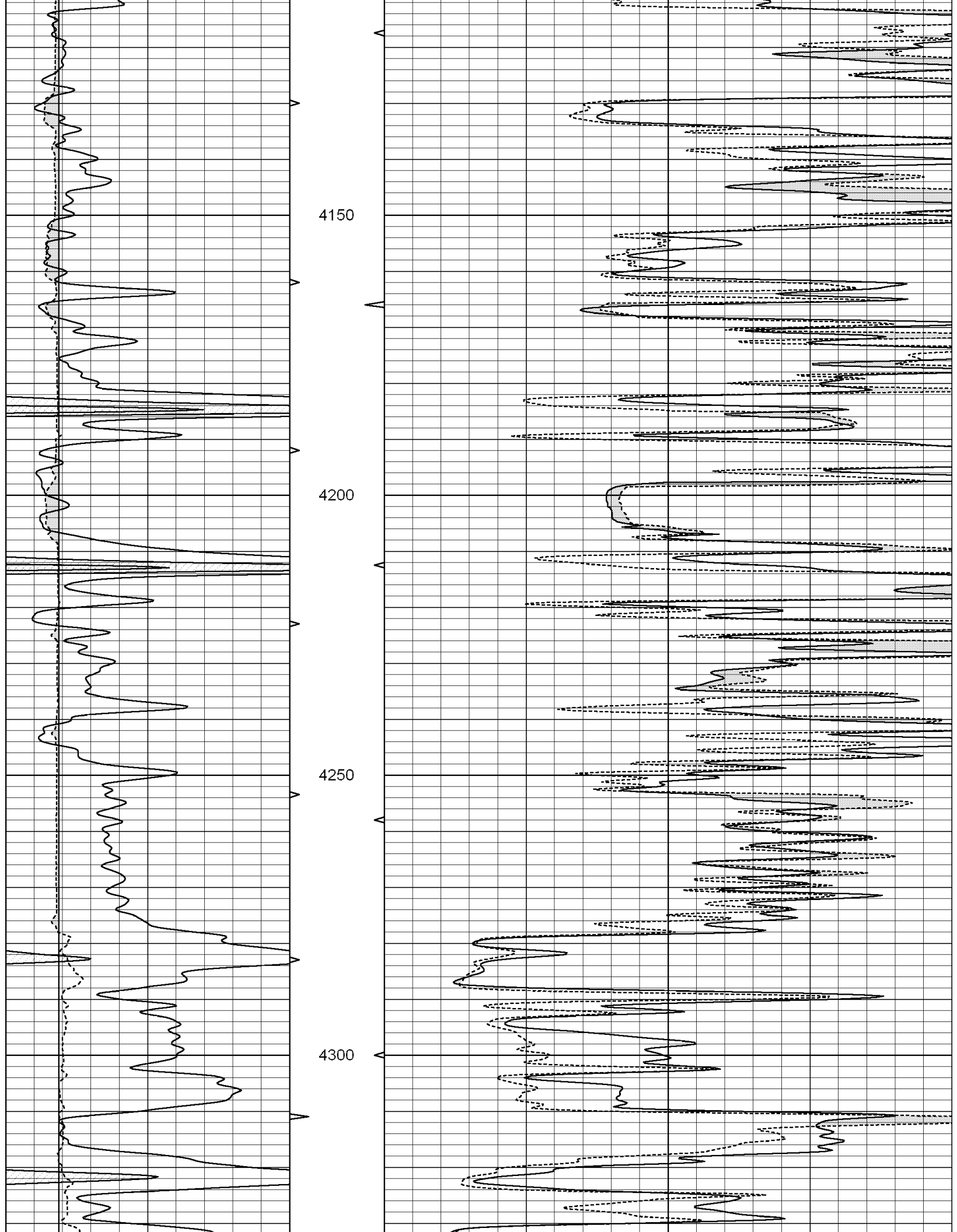
3600

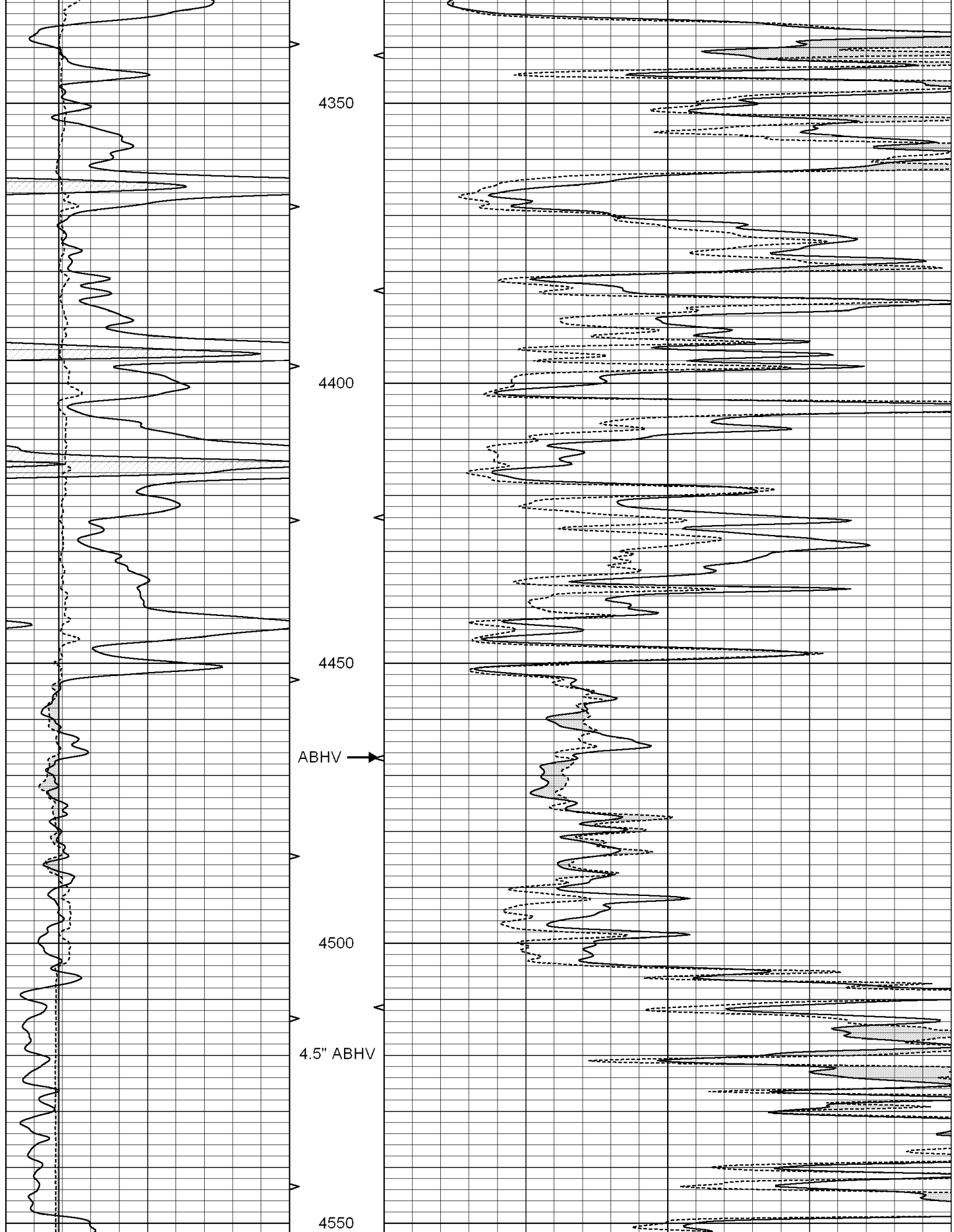
3650

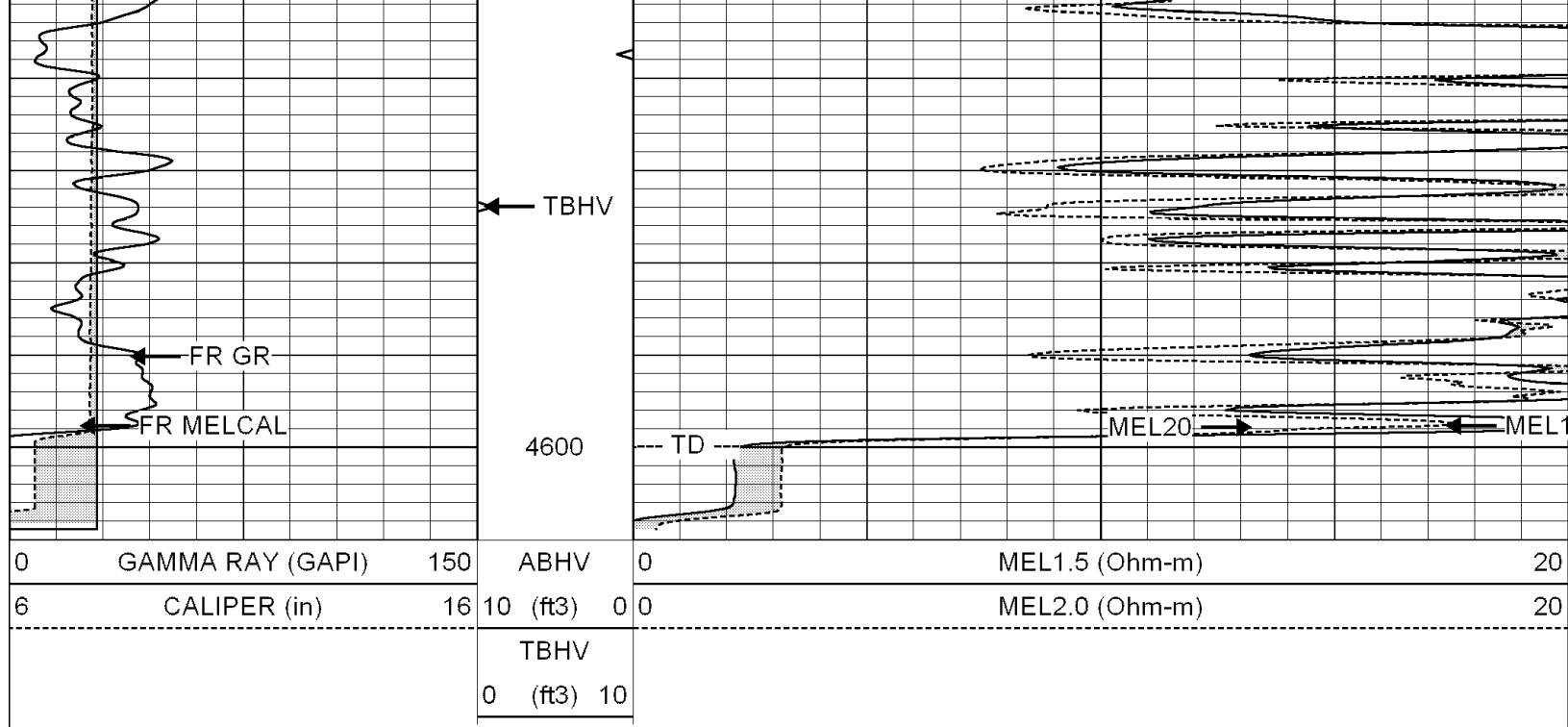










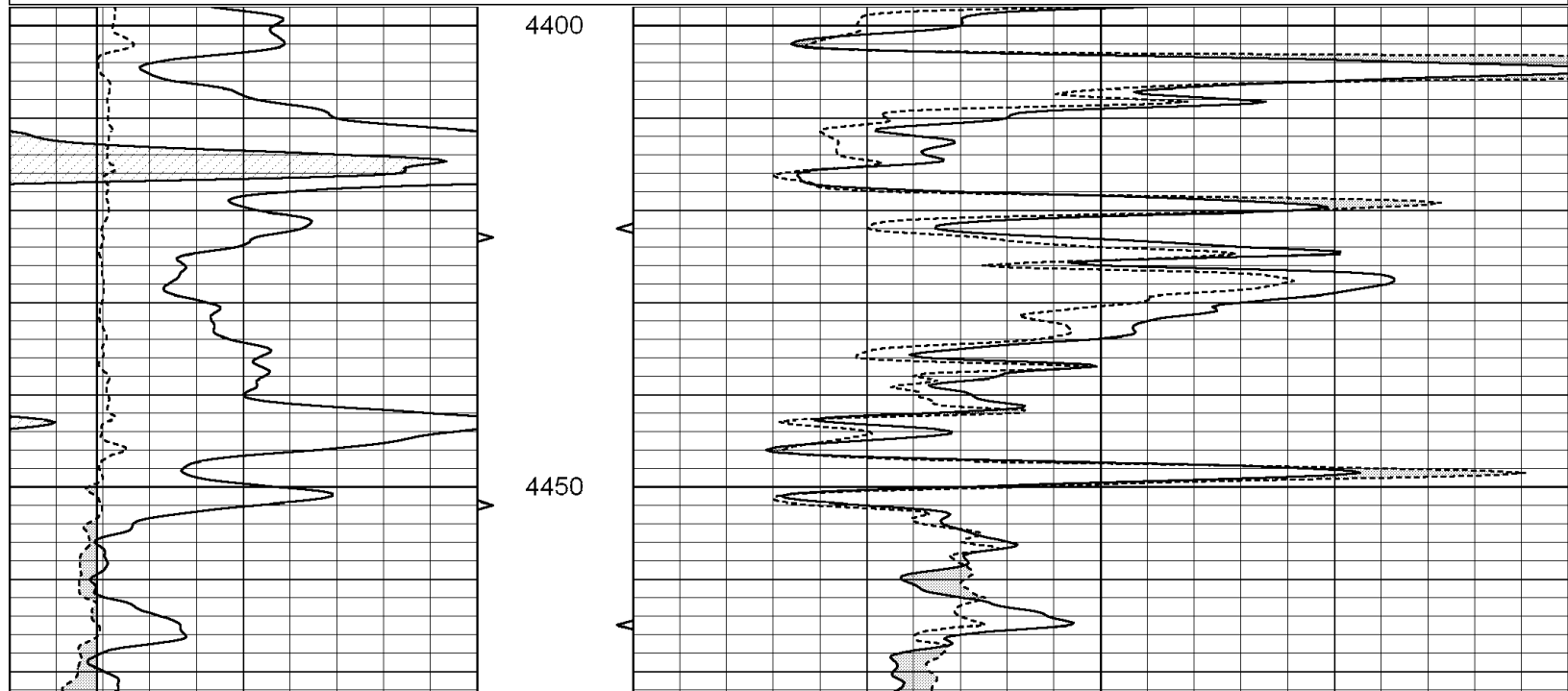


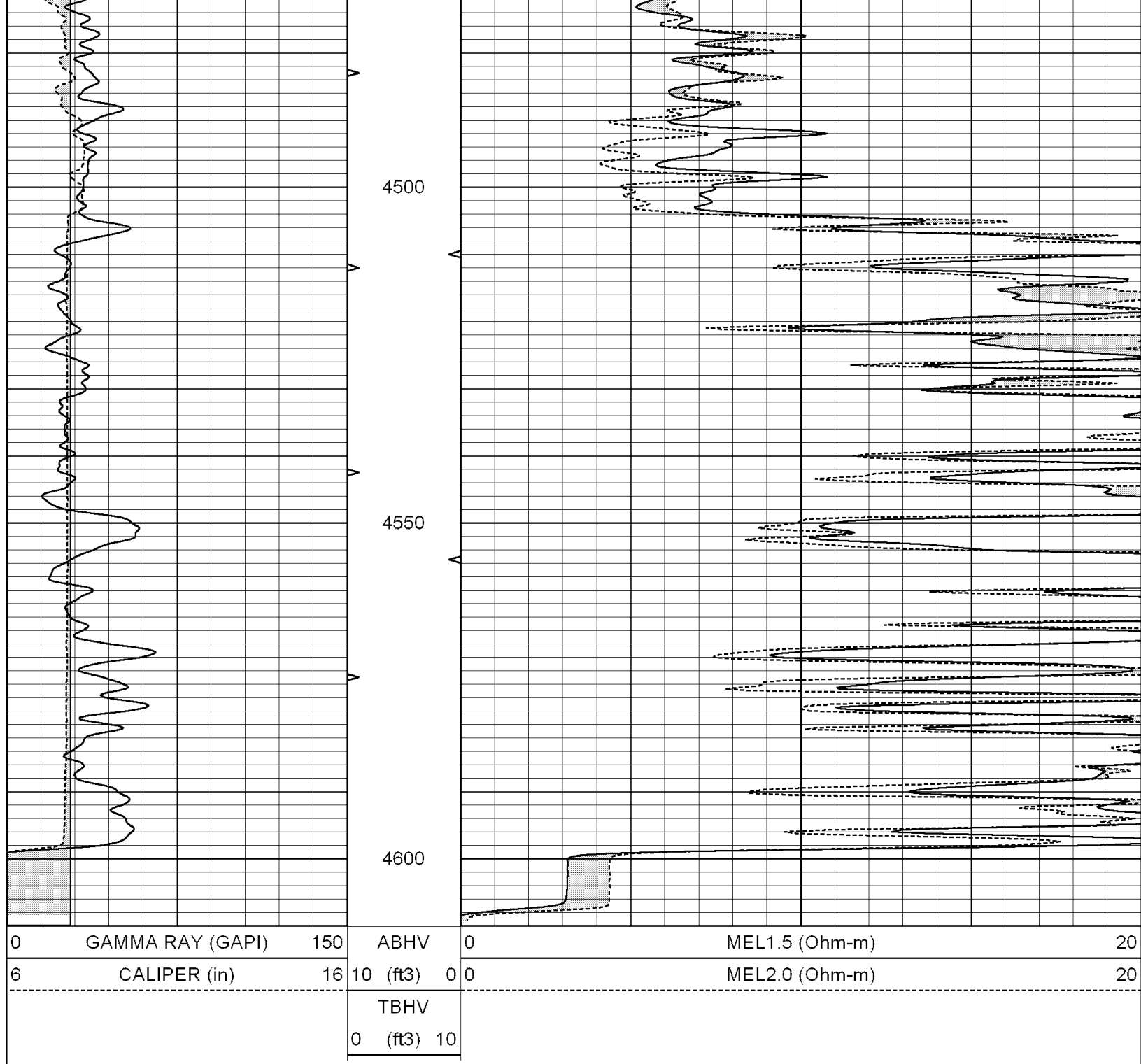
SUPERIOR  
Hays,  
Kansas

# REPEAT SECTION

Database File: 004624ddn.db  
 Dataset Pathname: pass4.2  
 Presentation Format: micro  
 Dataset Creation: Mon Apr 05 13:35:43 2010  
 Charted by: Depth in Feet scaled 1:240

0	GAMMA RAY (GAPI)	150	ABHV	0	MEL1.5 (Ohm-m)	20
6	CALIPER (in)	16	10 (ft3)	0 0	MEL2.0 (Ohm-m)	20
			TBHV			
			0 (ft3)	10		





### Calibration Report

Database File: 004624ddn.db  
 Dataset Pathname: pass6.A  
 Dataset Creation: Mon Apr 05 13:00:45 2010

### MICRO Calibration Report

Serial Number: Micro1  
 Tool Model: ProbeL  
 Performed: Mon Apr 05 10:49:58 2010

Caliper Calibration: Gain=3.622      Offset=-2.386

References	Low Cal	High Cal
Readings	7.400	14.000
	2.702	4.525

1.5" Calibration: Gain=75.000 Offset=-0.300

References	Low Cal	High Cal
Readings	0.000	20.000
	0.007	0.653

2" Calibration: Gain=35.000 Offset=0.500

References	Low Cal	High Cal
Readings	0.000	20.000
	0.021	0.757

### Gamma Ray Calibration Report

Serial Number:	GR5
Tool Model:	OPEN
Performed:	Mon Apr 05 10:58:39 2010

Calibrator Value:	1.0	GAPI
-------------------	-----	------

Background Reading:	0.0	cps
Calibrator Reading:	1.0	cps

Sensitivity:	0.6000	GAPI/cps
--------------	--------	----------