



**SUPERIOR**  
Hays,  
Kansas

**DUAL  
INDUCTION  
LOG**

Company PIONEER EXPLORATION, IIC.  
Well GREEN #2  
Field SPIVEY-GRABS BASIL  
County HARPER  
State KANSAS

Company PIONEER EXPLORATION, LLC.  
Well GREEN #2  
Field SPIVEY-GRABS BASIL  
County HARPER State KANSAS

Location: API #: 15-077-21678  
890' FSL & 1650' FEL  
SEC 29 TWP 31S RGE 9W  
Permanent Datum GROUND LEVEL Elevation 1660'  
Log Measured From KELLY BUSHING 10' A.G.L.  
Drilling Measured From KELLY BUSHING  
Other Services  
CDL/CNL  
MICRO  
Elevation  
K.B. 1670  
D.F.  
G.L. 1660

Date	4-5-10
Run Number	ONE
Depth Driller	4600
Depth Logger	4600
Bottom Logged Interval	4598
Top Log Interval	00
Casing Driller	225
Casing Logger	222
Bit Size	7.875
Type Fluid in Hole	CHEMICAL MUD
Density / Viscosity	9.4 / 50
pH / Fluid Loss	9.0 / 12.0
Source of Sample	FLOWLINE
Rim @ Meas. Temp	0.65 @ 94F
Rmf @ Meas. Temp	0.49 @ 94F
Rmc @ Meas. Temp	0.78 @ 94F
Source of Rmf / Rmc	MEASURED
Rm @ BHT	.500 @ 121F
Time Circulation Stopped	3 HOURS
Time Logger on Bottom	8:30 A.M.
Maximum Recorded Temperature	121F
Equipment Number	860
Location	HAYS, KS.
Recorded By	RUPP
Witnessed By	PAT DEENIHAN

<<< Fold Here >>>

All interpretations are opinions based on inferences from electrical or other measurements and we cannot and do not guarantee the accuracy or correctness of any interpretation, and we shall not, except in the case of gross or willful negligence on our part, be liable or responsible for any loss, costs, damages, or expenses incurred or sustained by anyone resulting from any interpretation made by any of our officers, agents or employees. These interpretations are also subject to our general terms and conditions set out in our current Price Schedule.

Comments

SUPERIOR WELL SERVICES  
785-628-6395  
THANK YOU FOR YOUR BUSINESS  
DIRECTIONS: SHARON, EAST TO C.L., 2E TO RD. #150, 4 1/2N, W INTO.

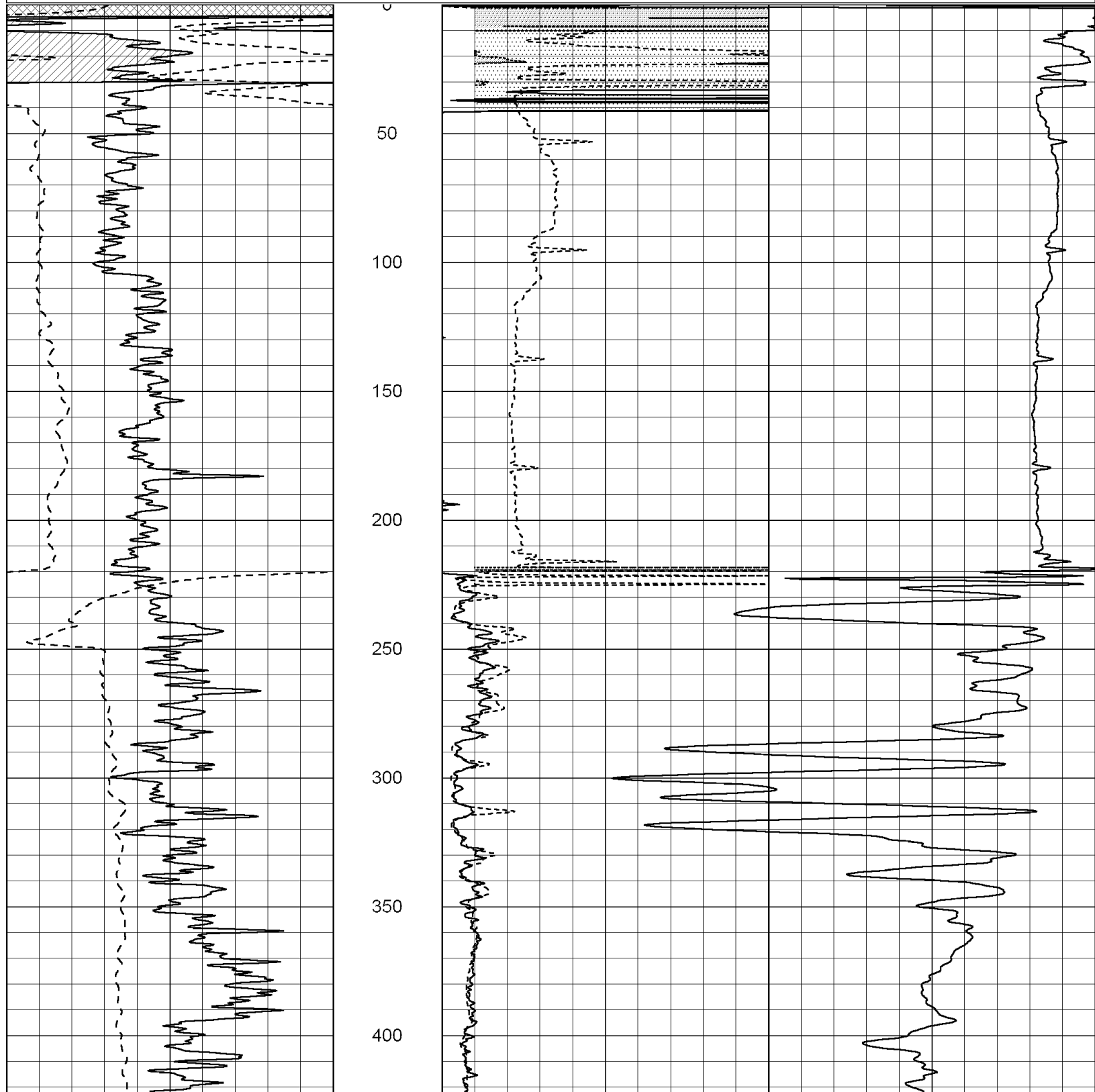


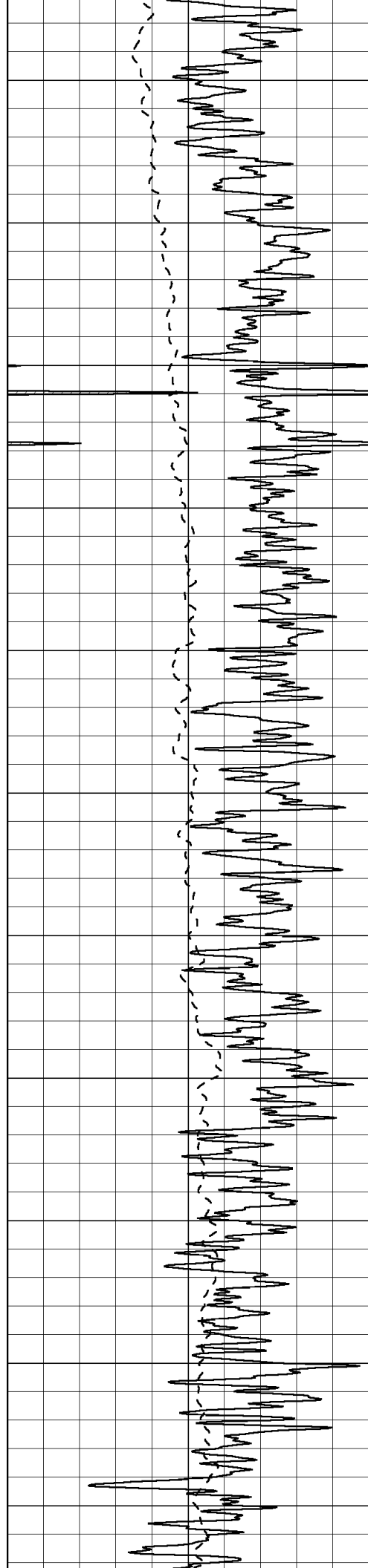
SUPERIOR  
Hays,  
Kansas

**MAIN SECTION**

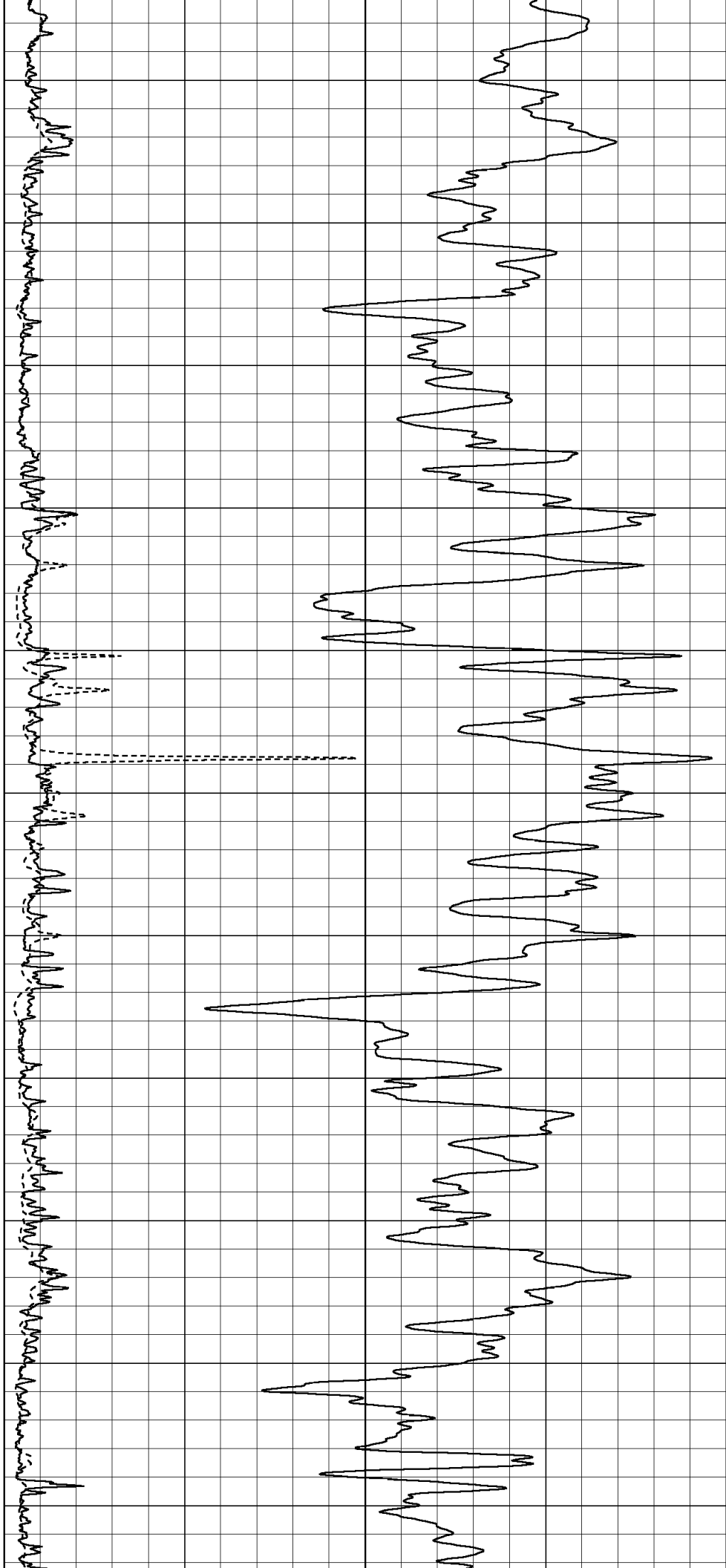
Database File: 004624ddn.db  
 Dataset Pathname: pass3.1A  
 Presentation Format: dil2  
 Dataset Creation: Mon Apr 05 10:30:47 2010  
 Charted by: Depth in Feet scaled 1:600

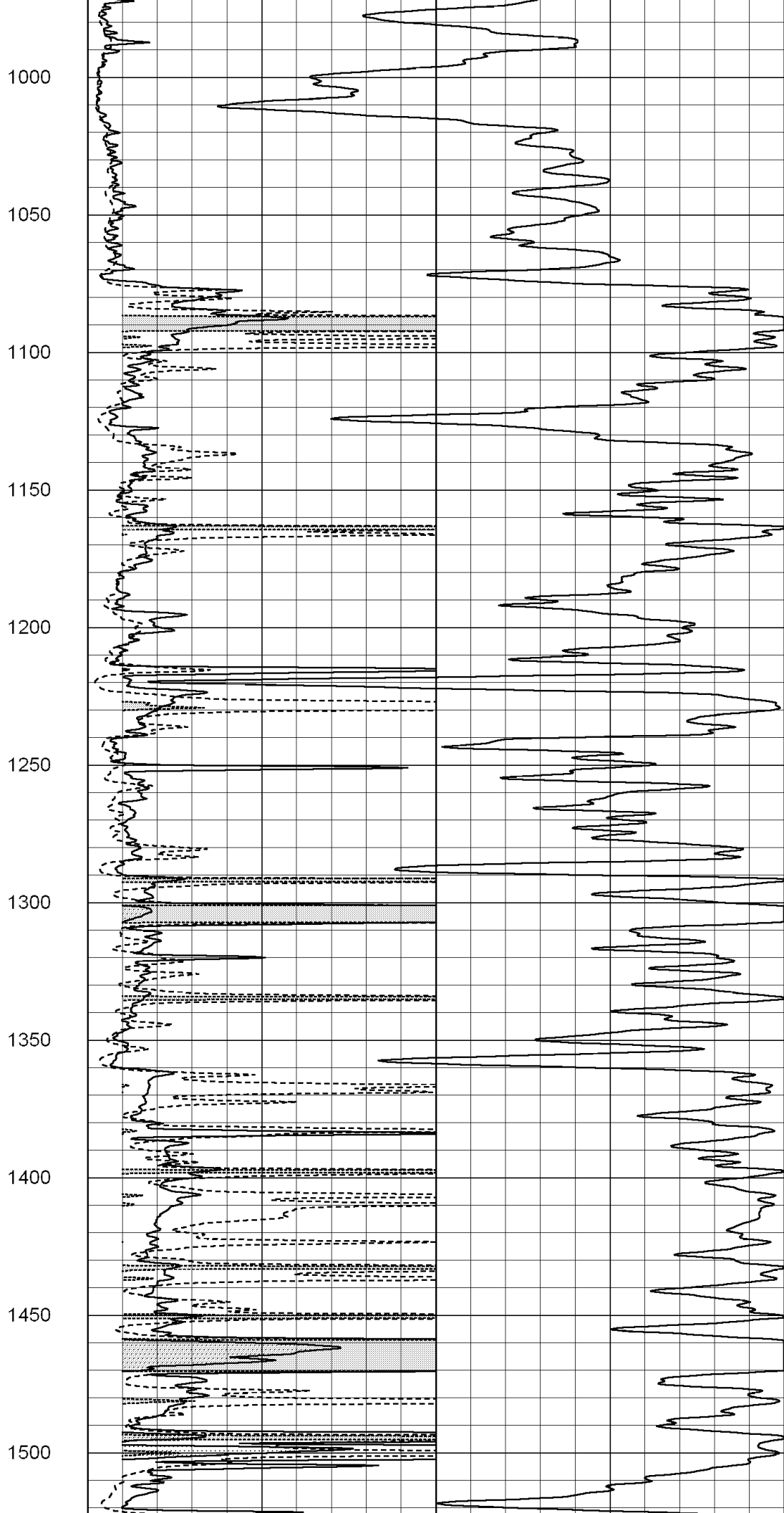
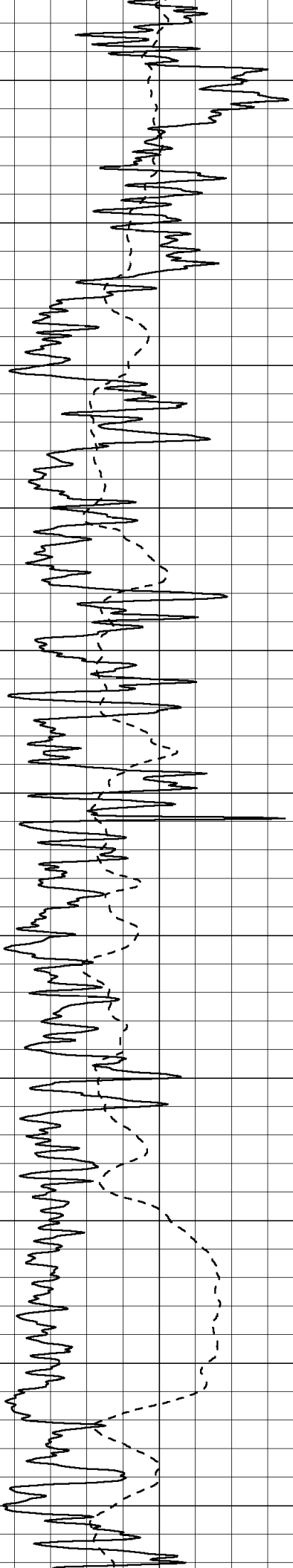
0	Gamma Ray (GAPI)	150	0	RLL3 (Ohm-m)	50
-100	SP (mV)	100	0	Deep Induction (Ohm-m)	50
-----			1000	CILD (mmho/m)	0
			50	RILD X10 (Ohm-m)	500
			50	RLL3 X10 (Ohm-m)	500

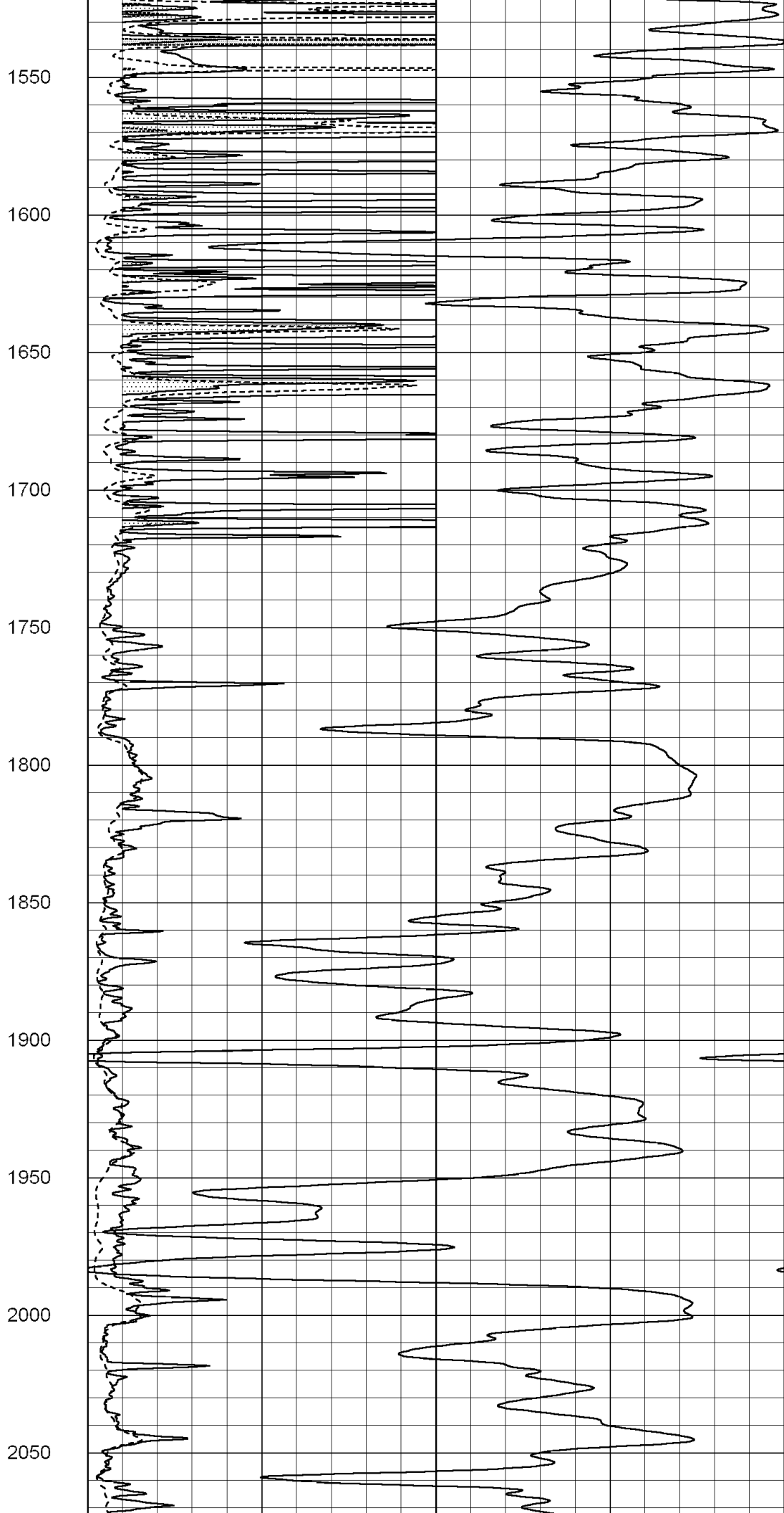
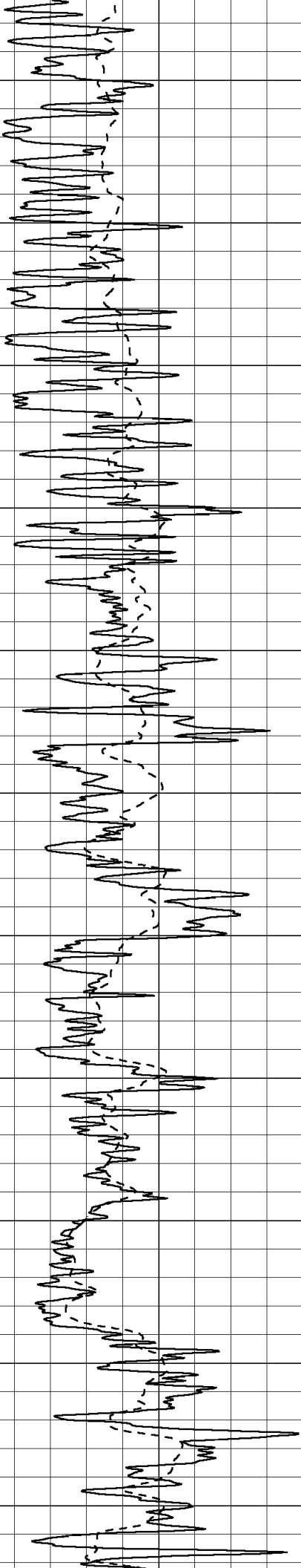


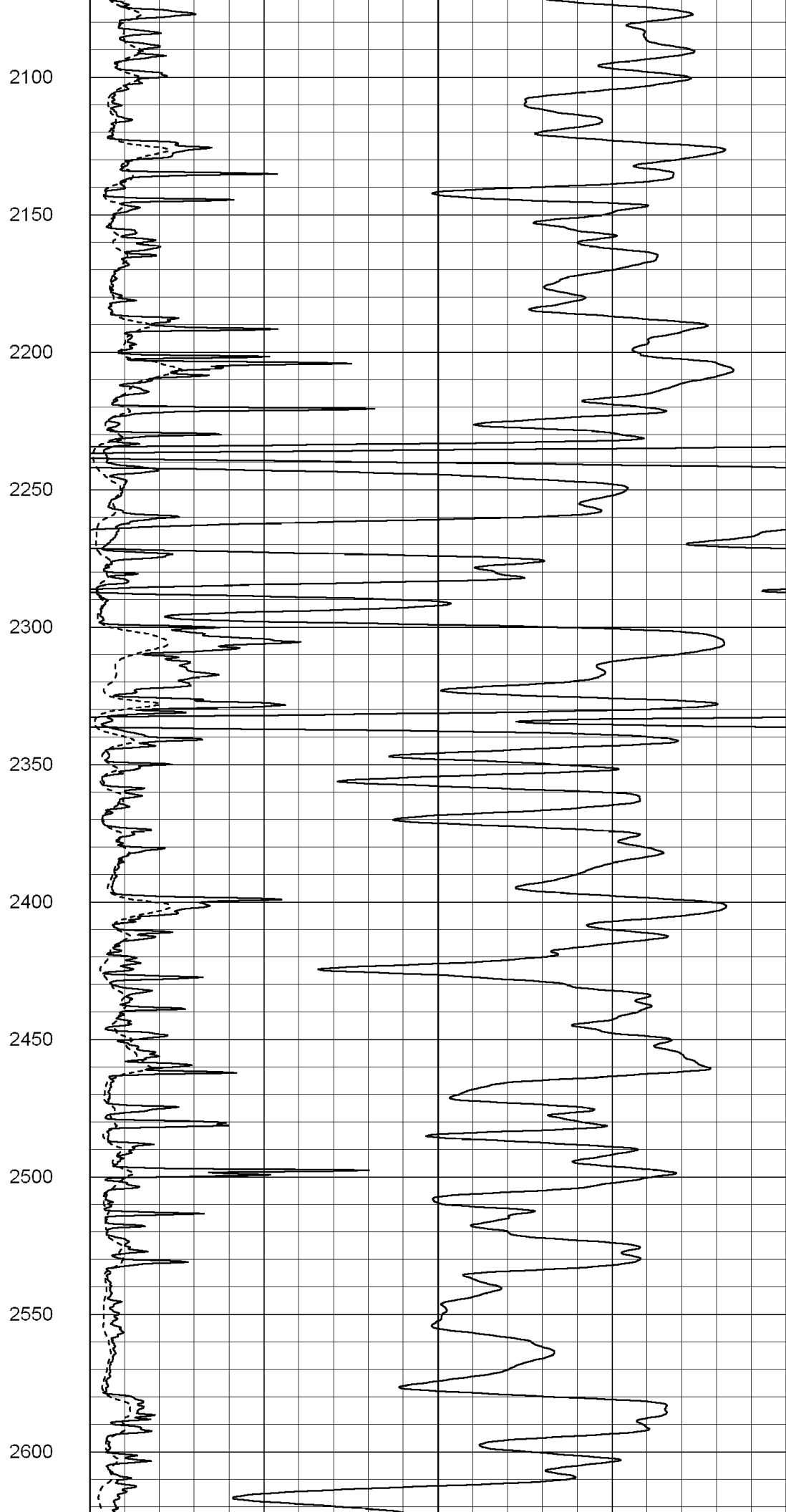
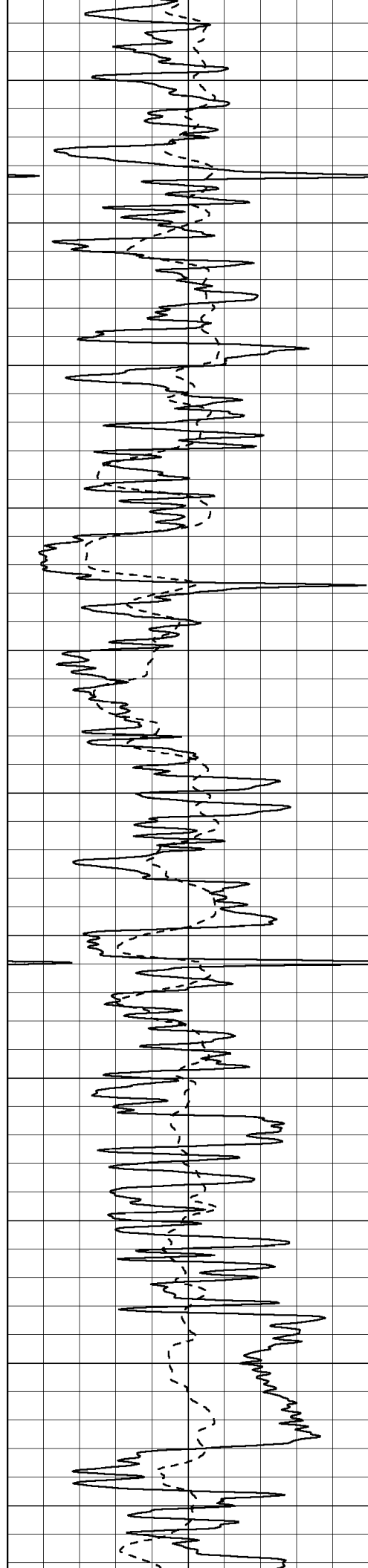


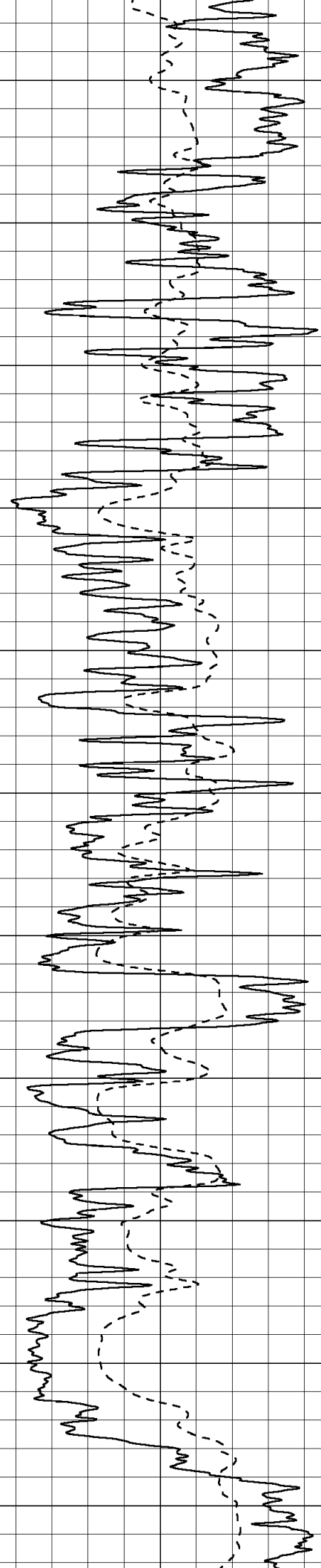
450  
500  
550  
600  
650  
700  
750  
800  
850  
900  
950











2650

2700

2750

2800

2850

2900

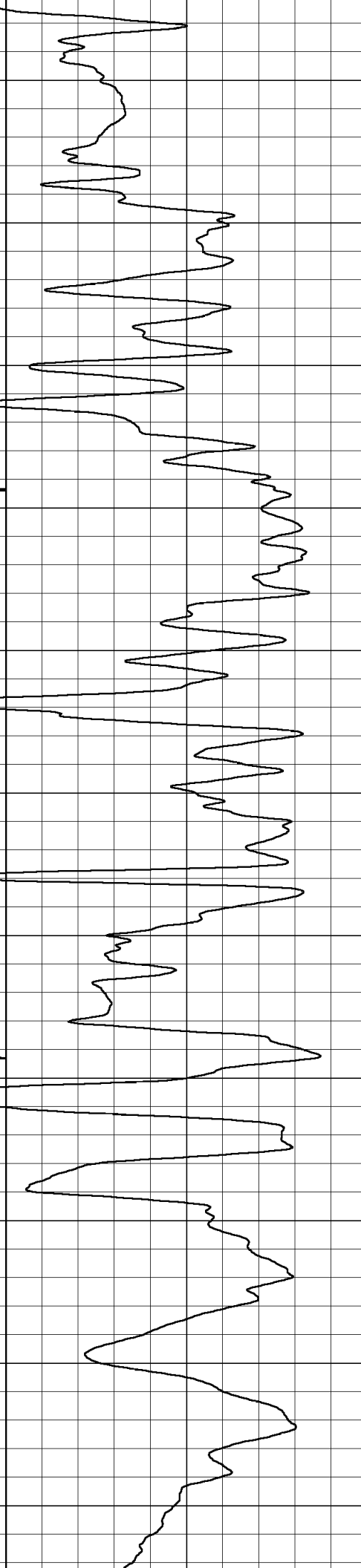
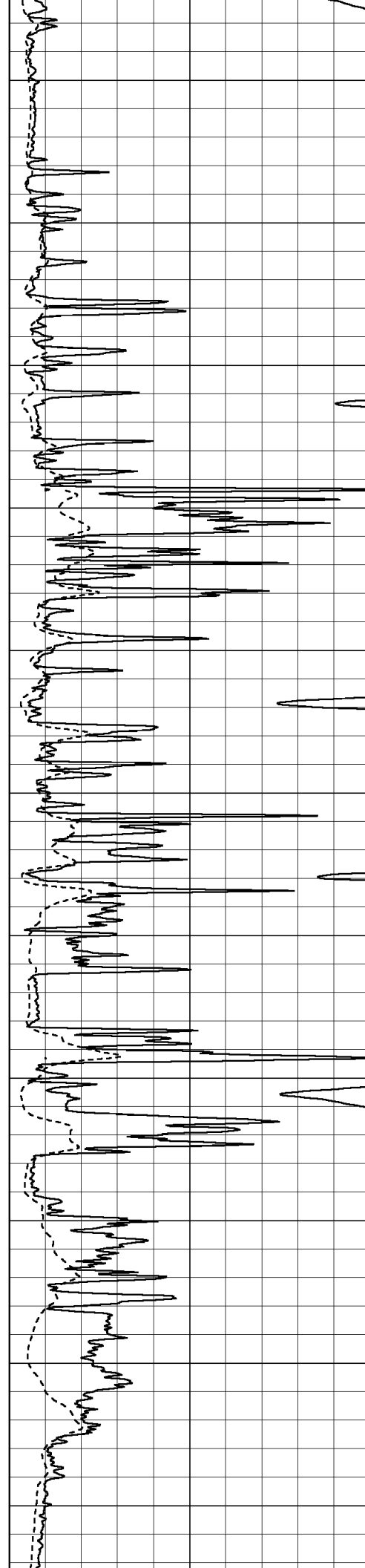
2950

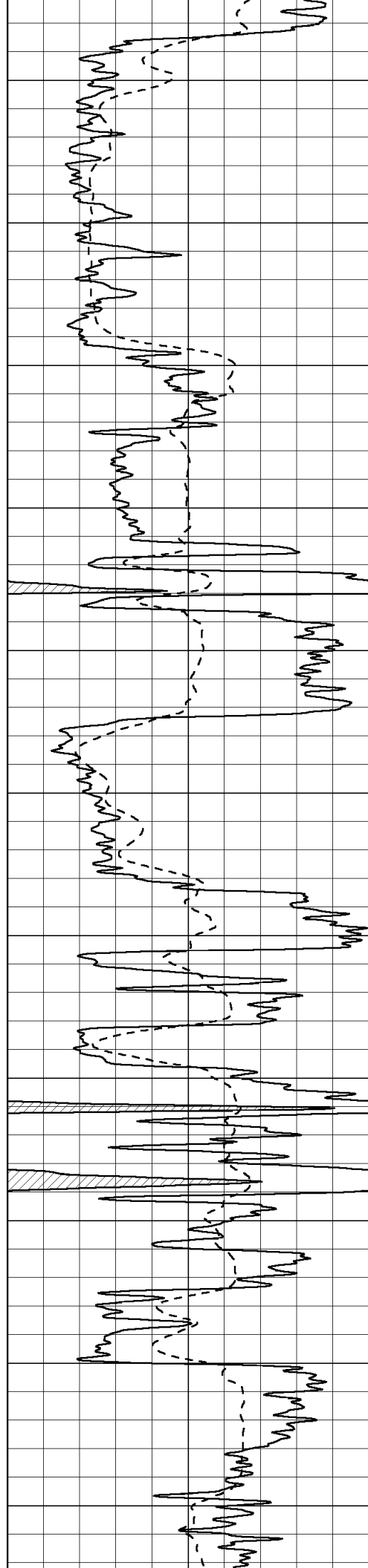
3000

3050

3100

3150





3200

3250

3300

3350

3400

3450

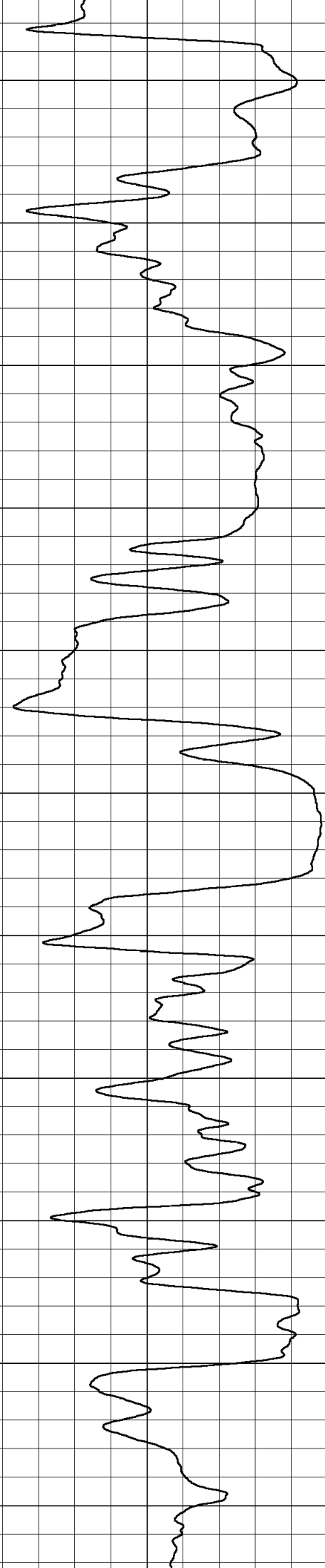
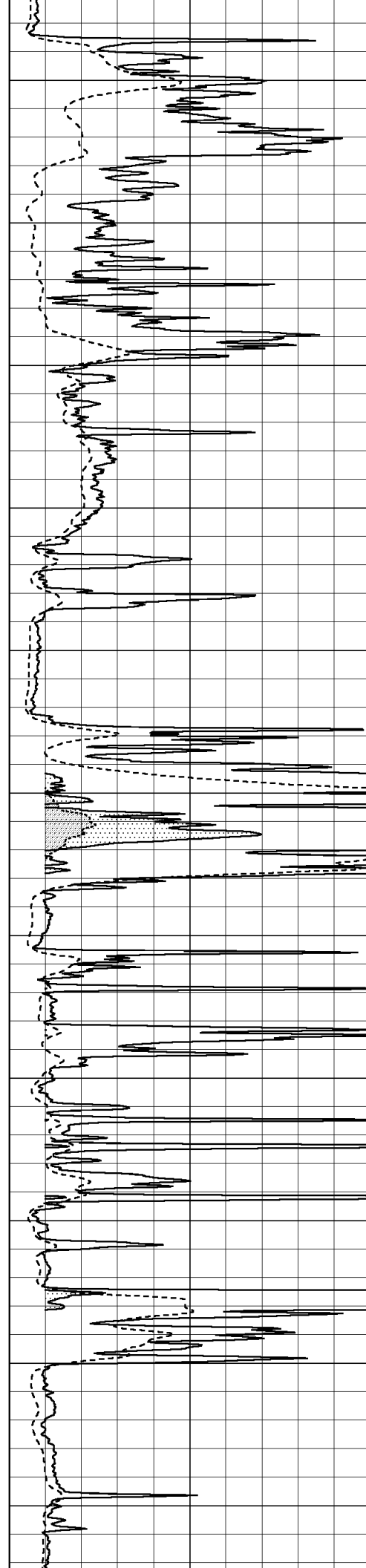
3500

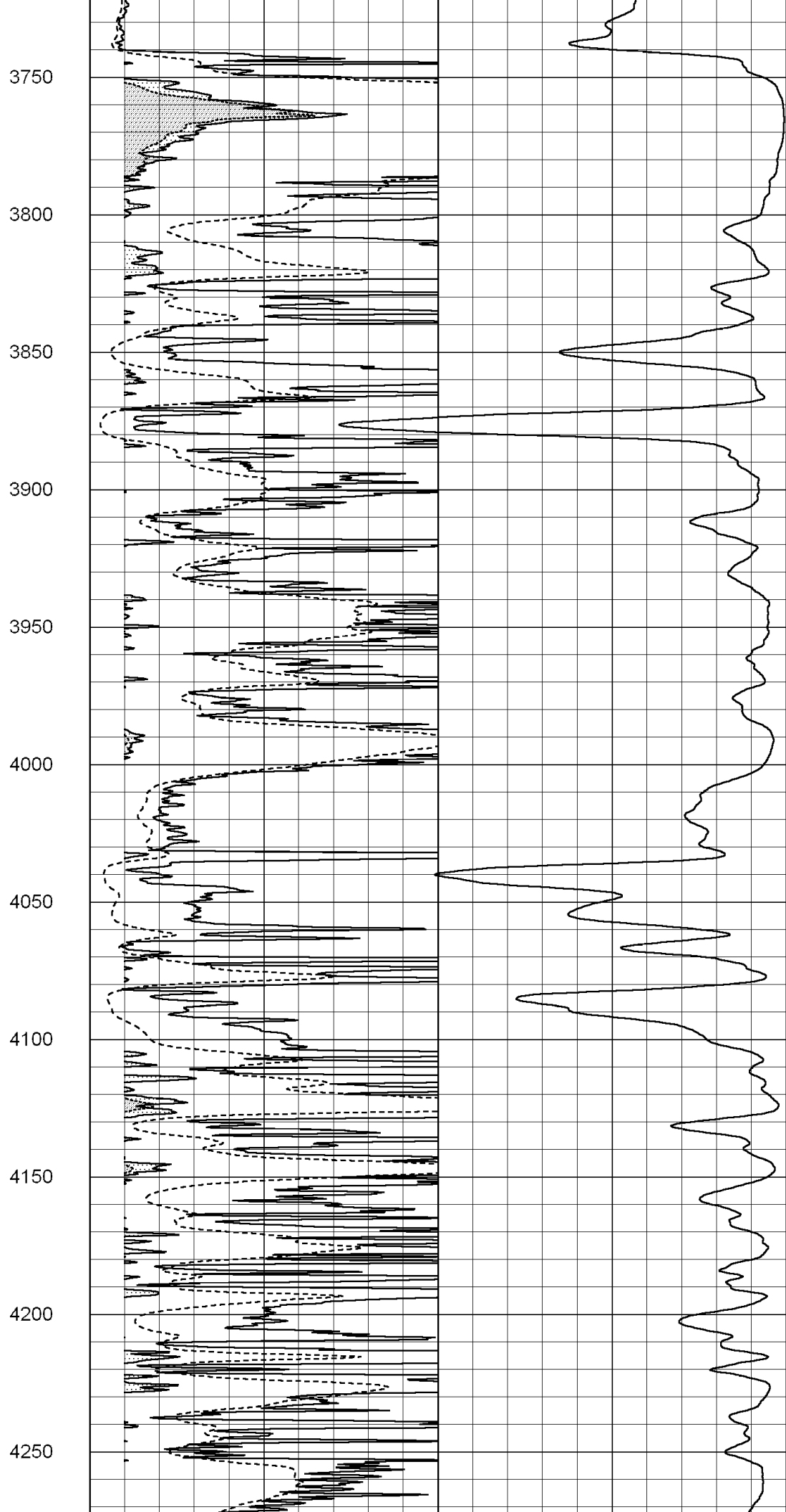
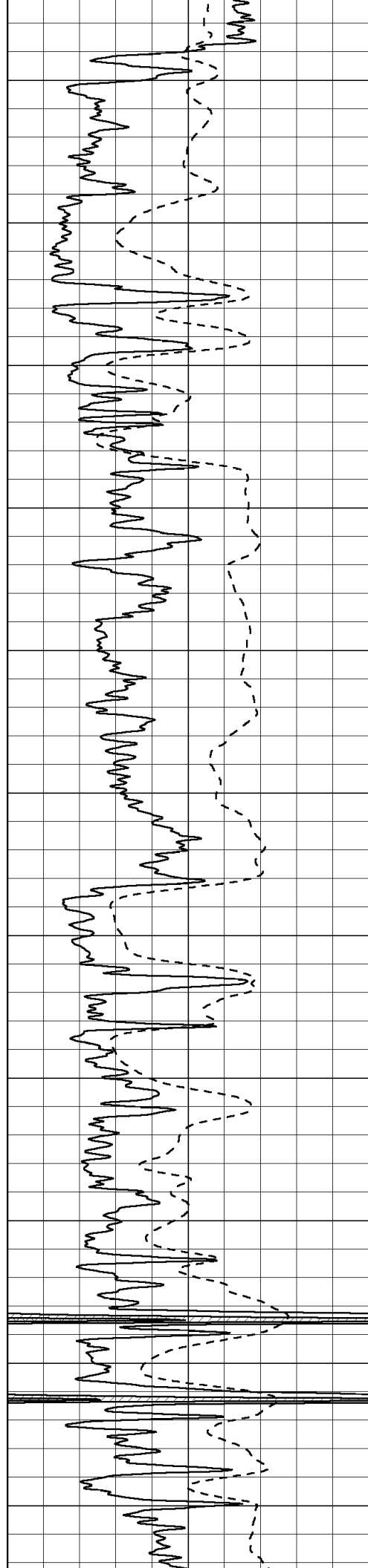
3550

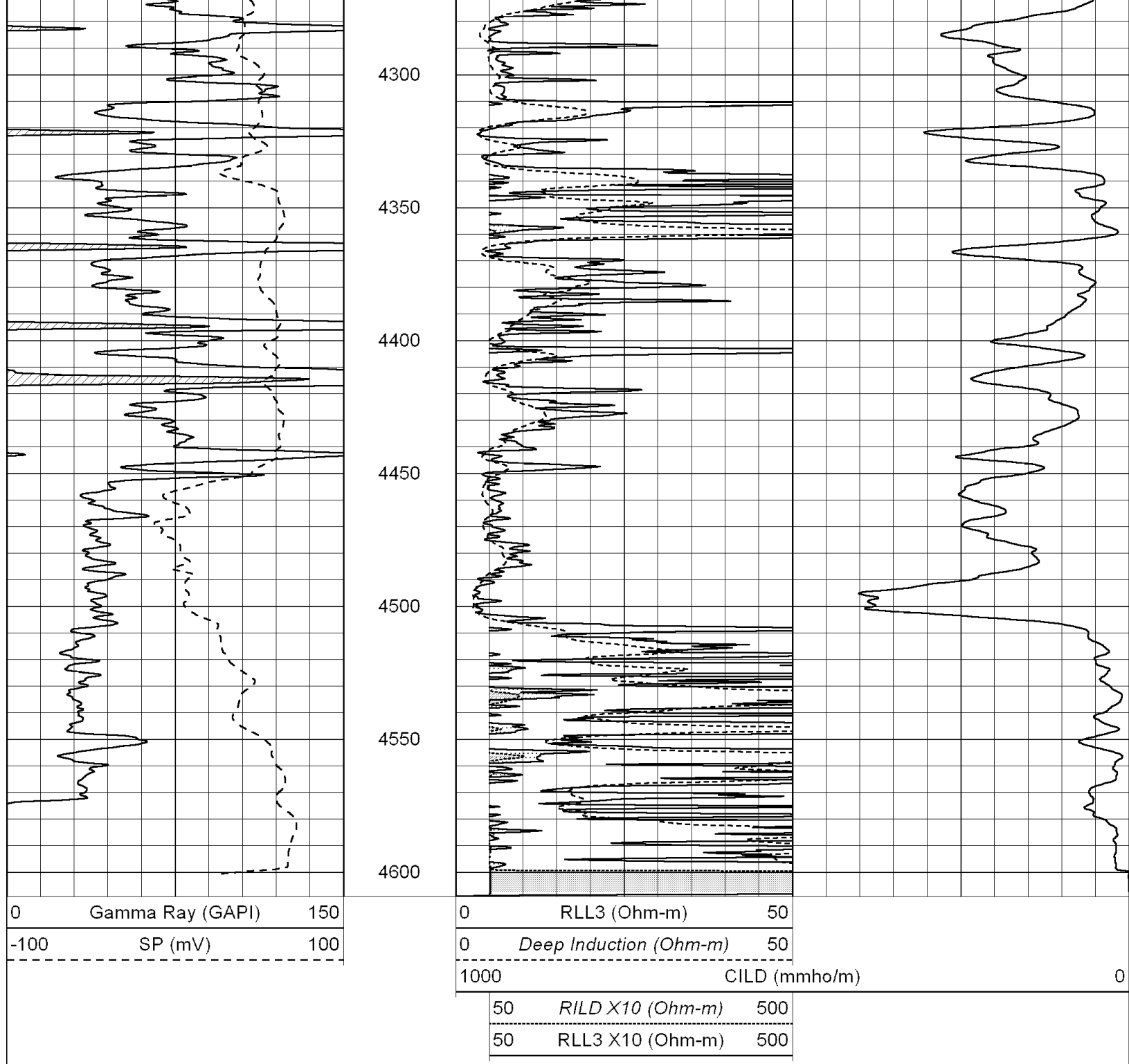
3600

3650

3700





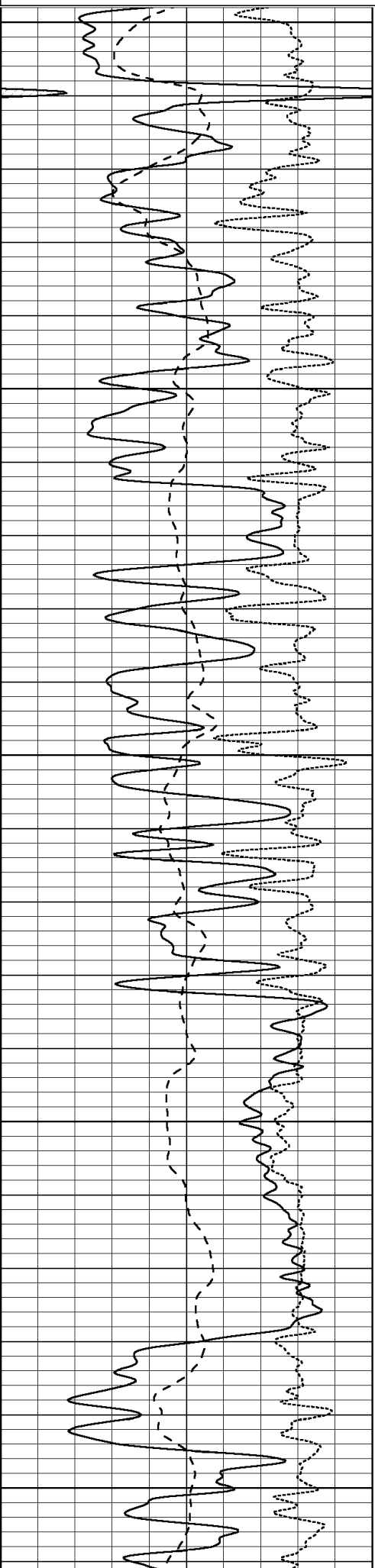


SUPERIOR  
Hays,  
Kansas

# MAIN SECTION

Database File: 004624ddn.db  
 Dataset Pathname: pass3.1A  
 Presentation Format: dil  
 Dataset Creation: Mon Apr 05 10:30:47 2010  
 Charted by: Depth in Feet scaled 1:240

0	GAMMA RAY (GAPI)	150	0.2	RLL3 (Ohm-m)	2000
-100	SP (mV)	100	0.2	DEEP INDUCTION (Ohm-m)	2000
-250	RxoRt	50	0.2	MEDIUM INDUCTION (Ohm-m)	2000



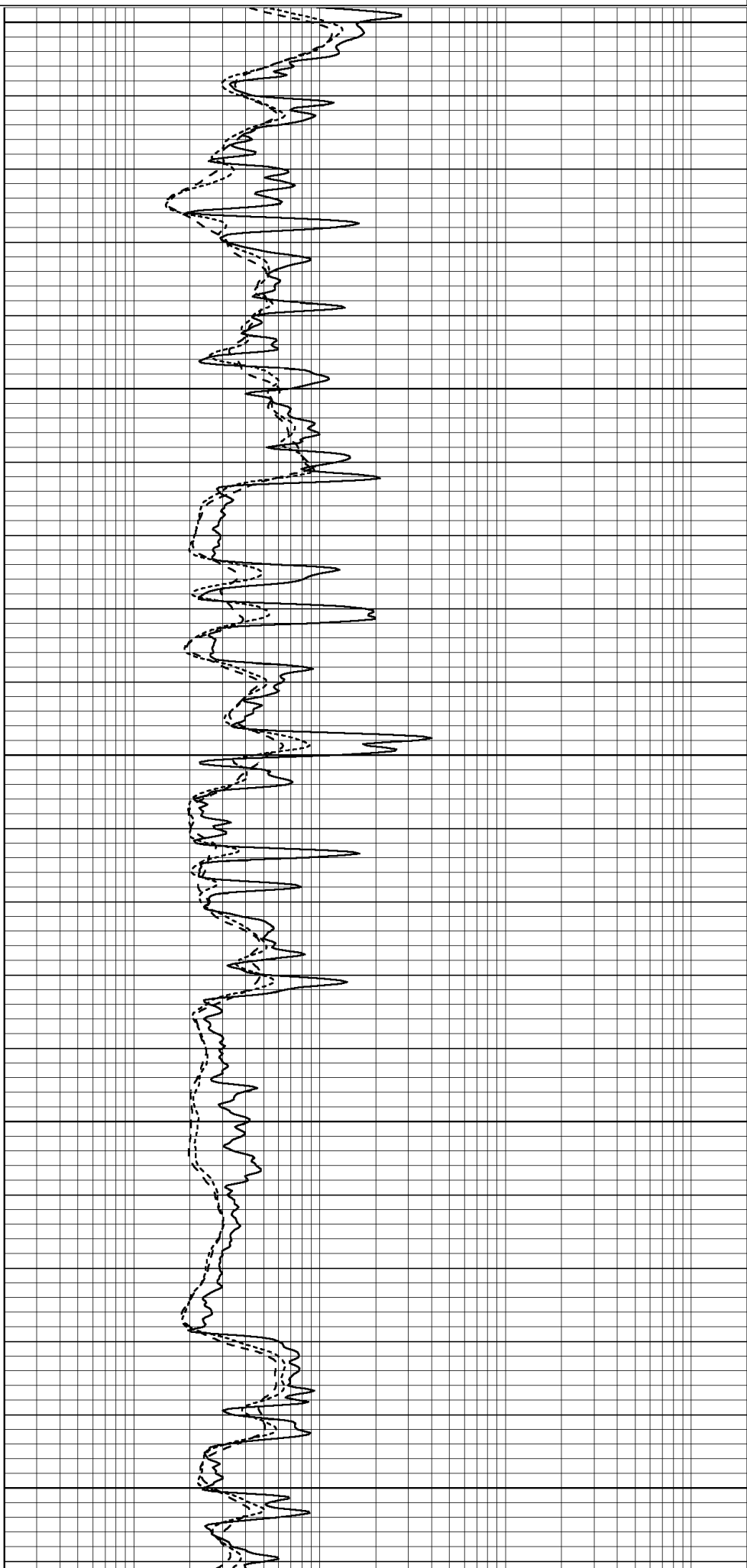
2400

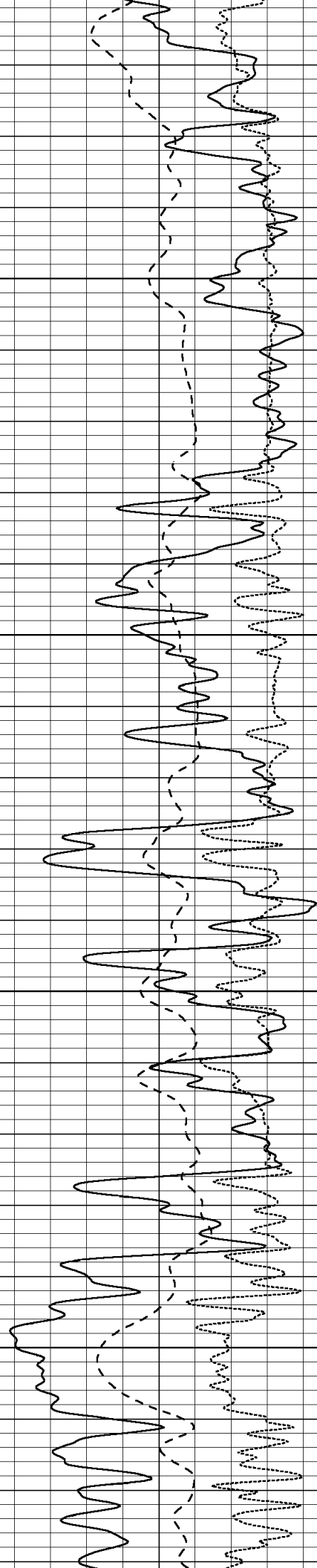
2450

2500

2550

2600



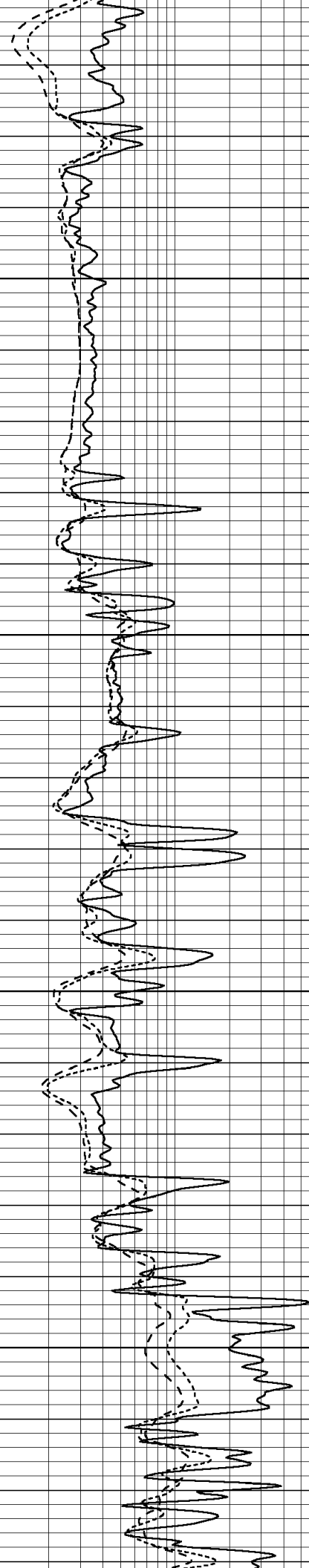


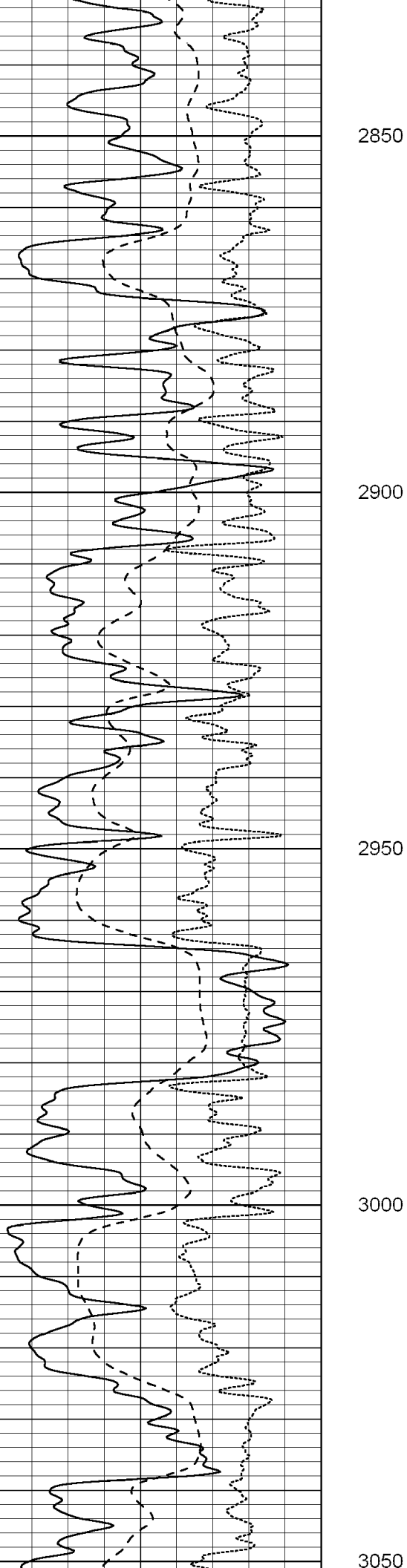
2650

2700

2750

2800





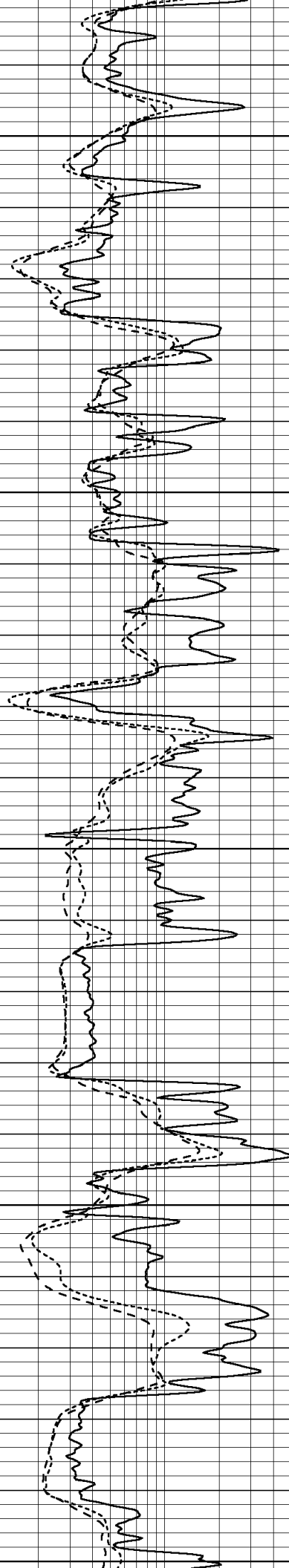
2850

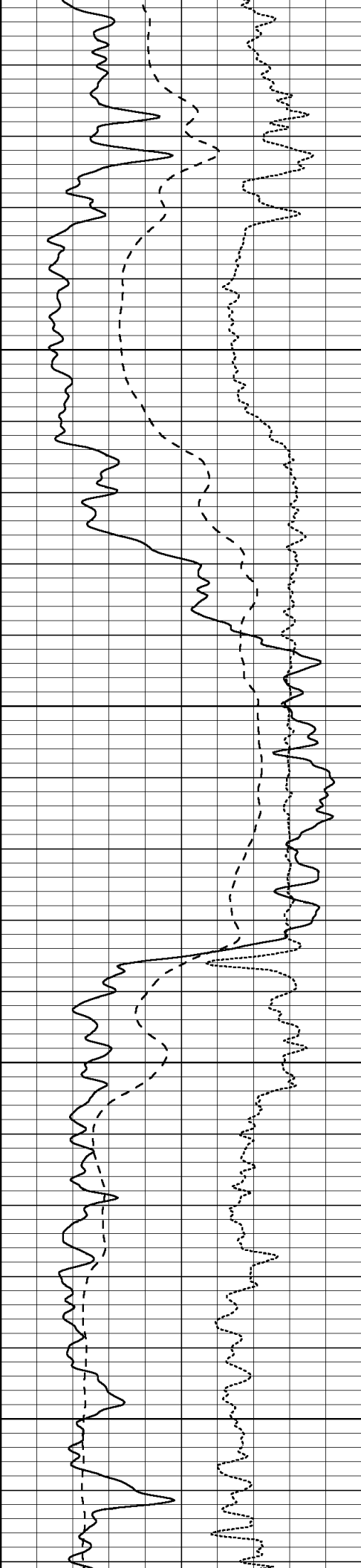
2900

2950

3000

3050



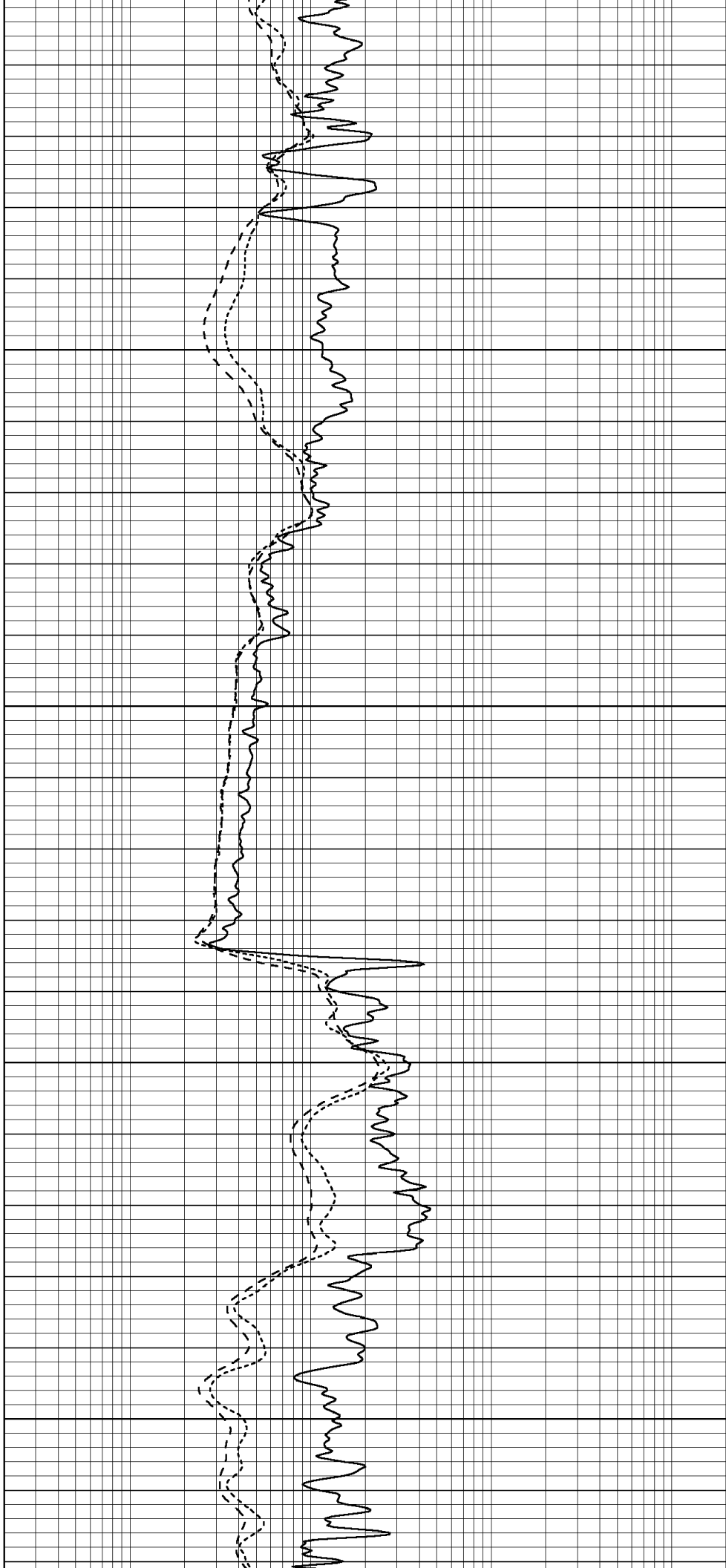


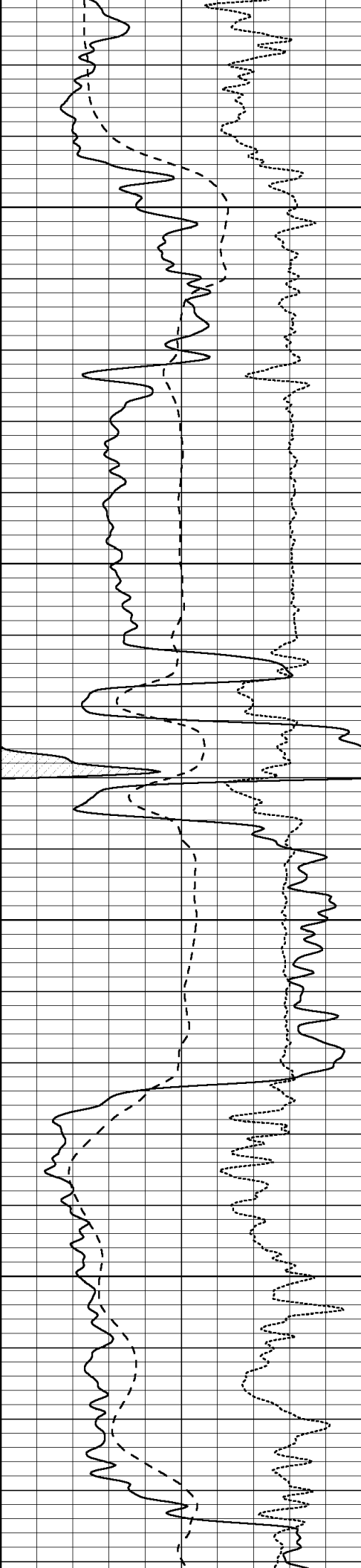
3100

3150

3200

3250



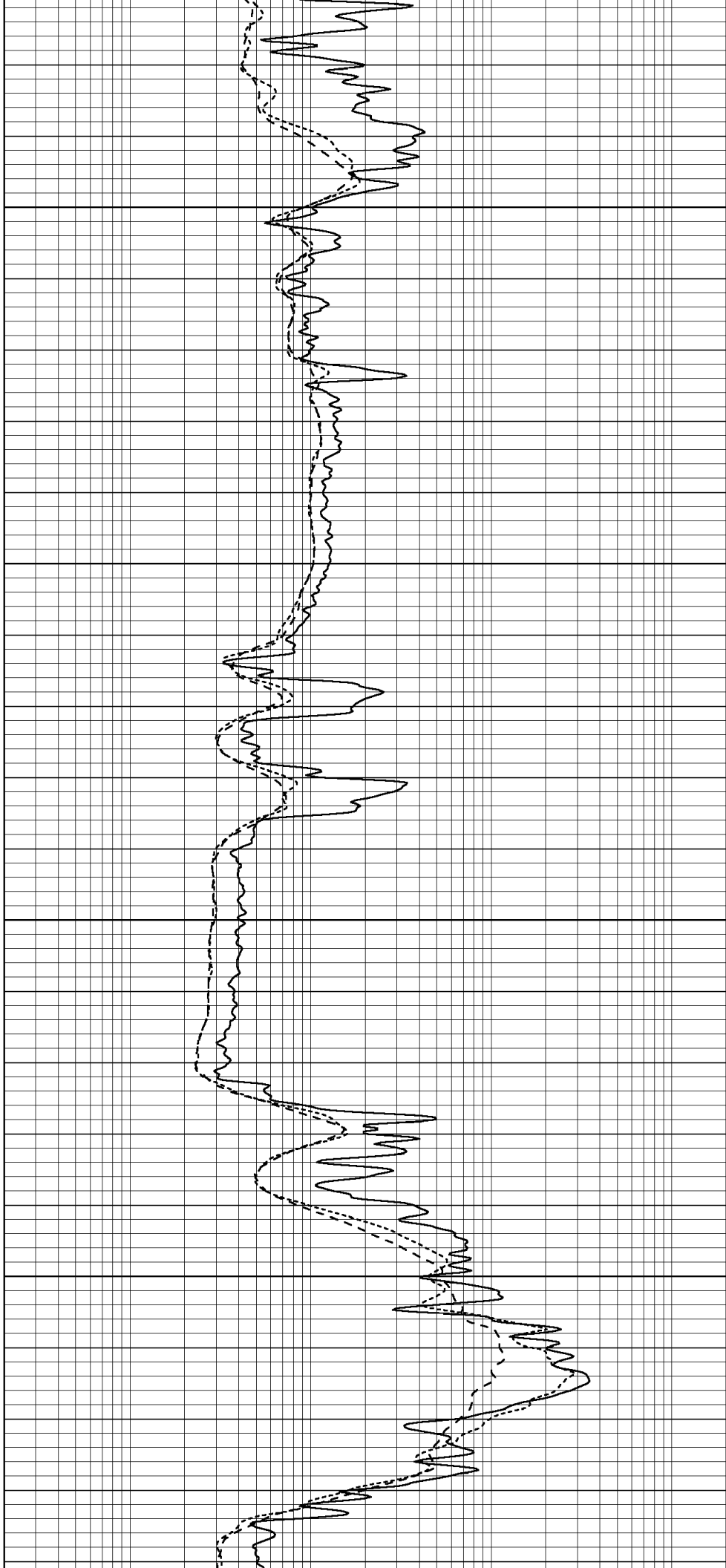


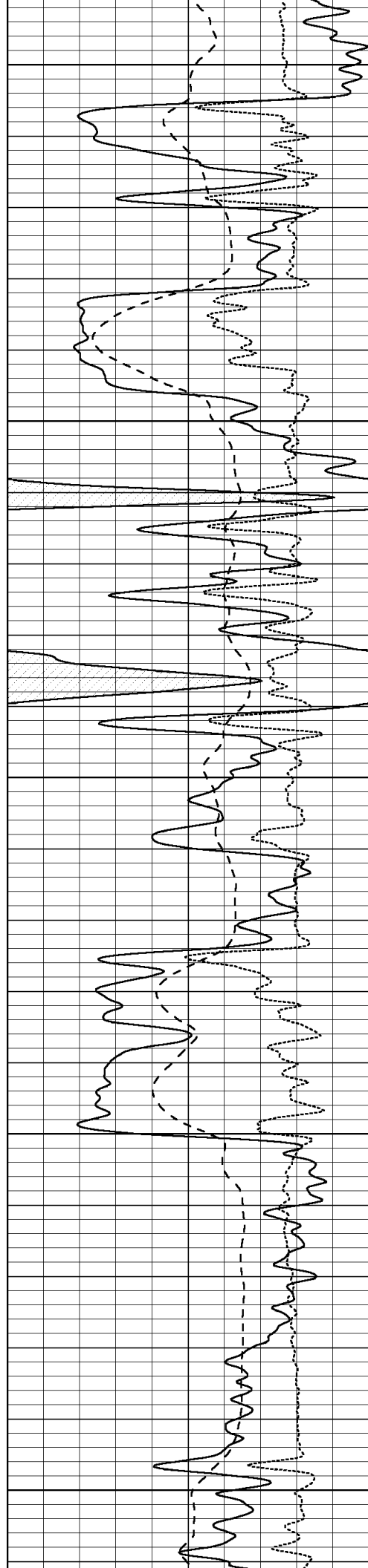
3300

3350

3400

3450





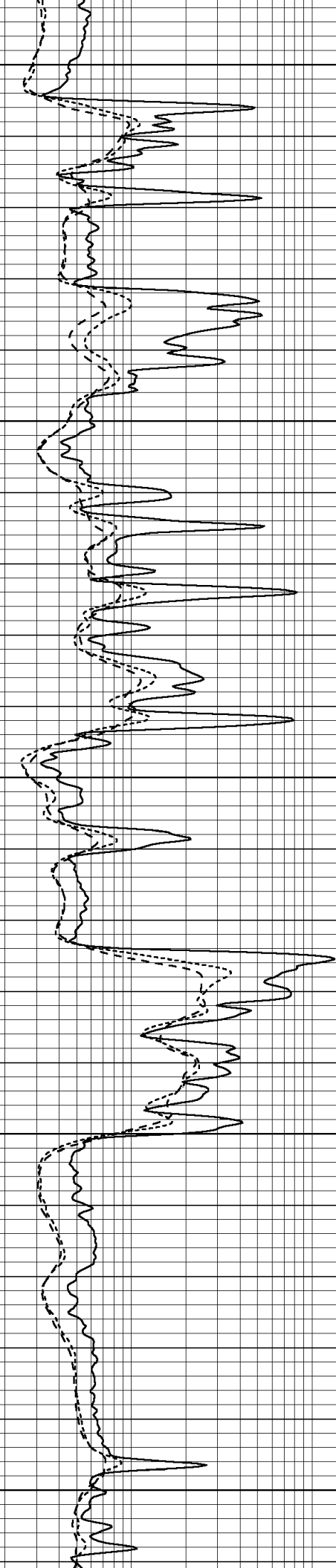
3500

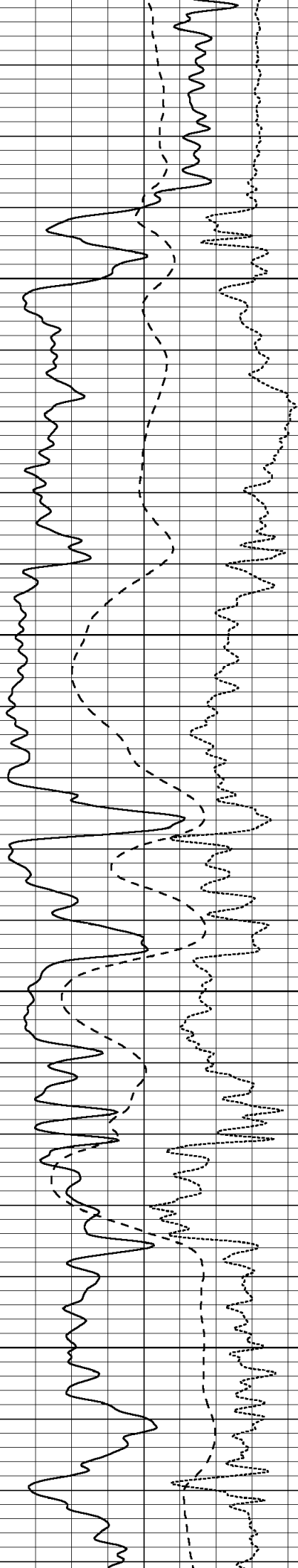
3550

3600

3650

3700



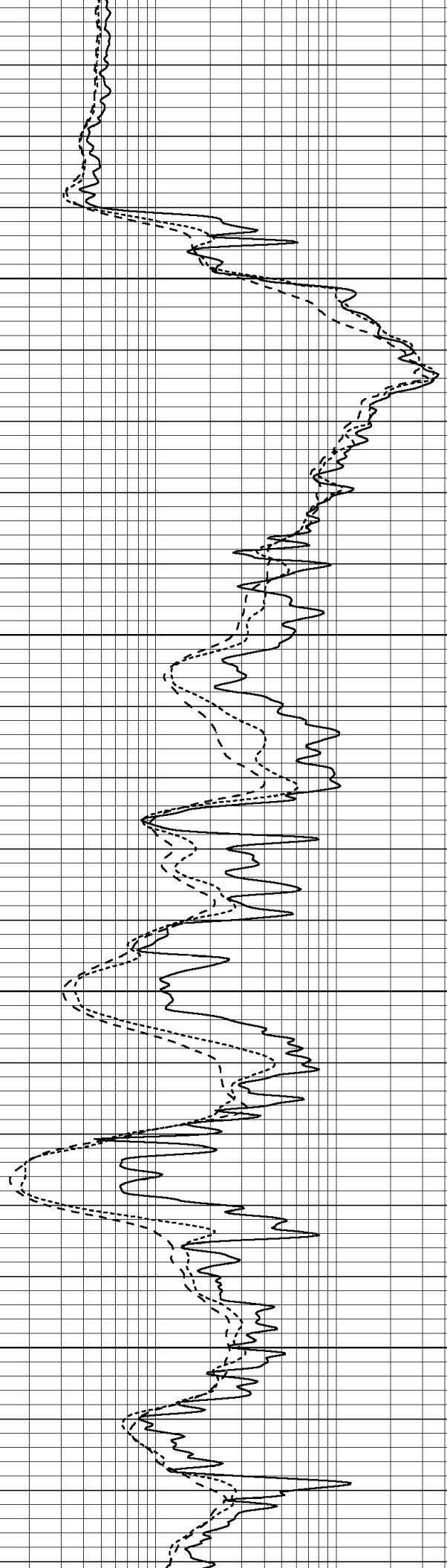


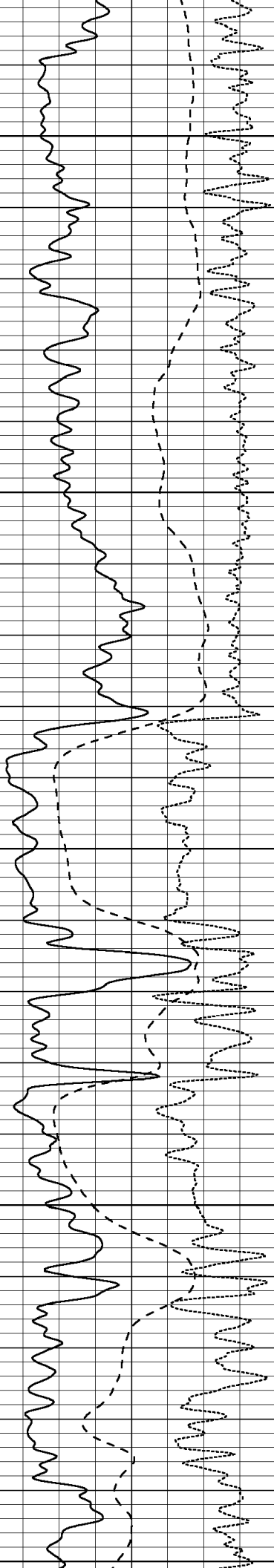
3750

3800

3850

3900





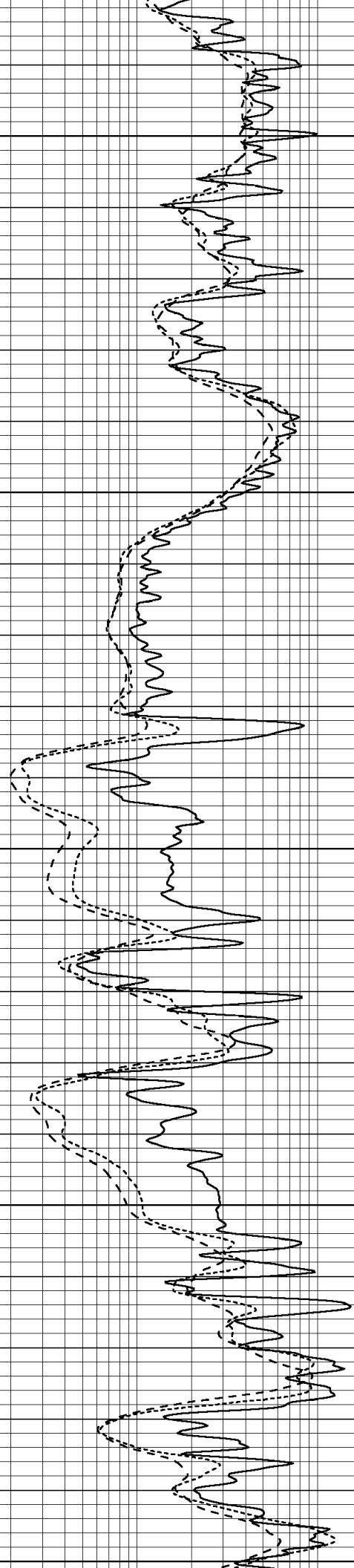
3950

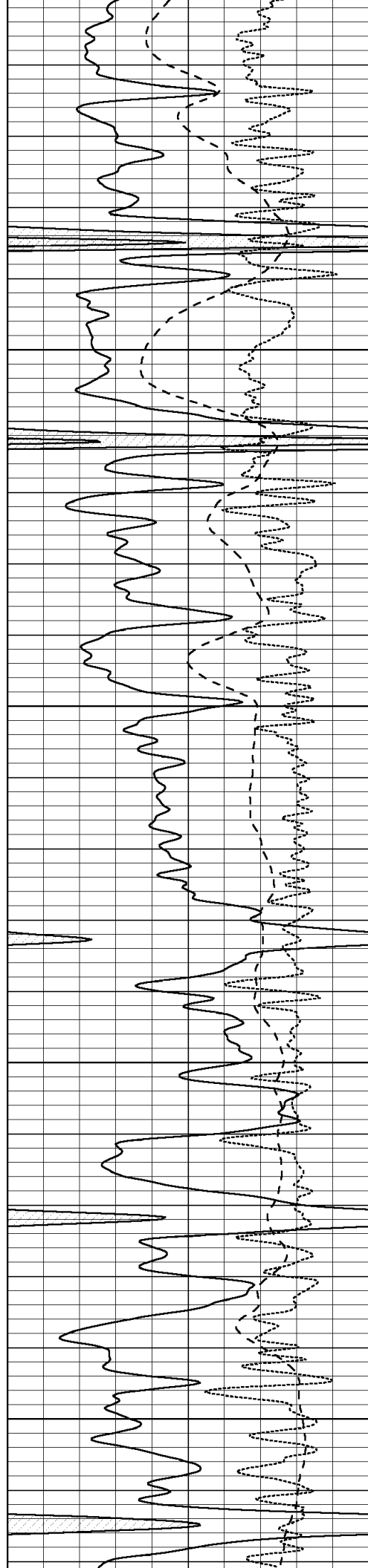
4000

4050

4100

4150



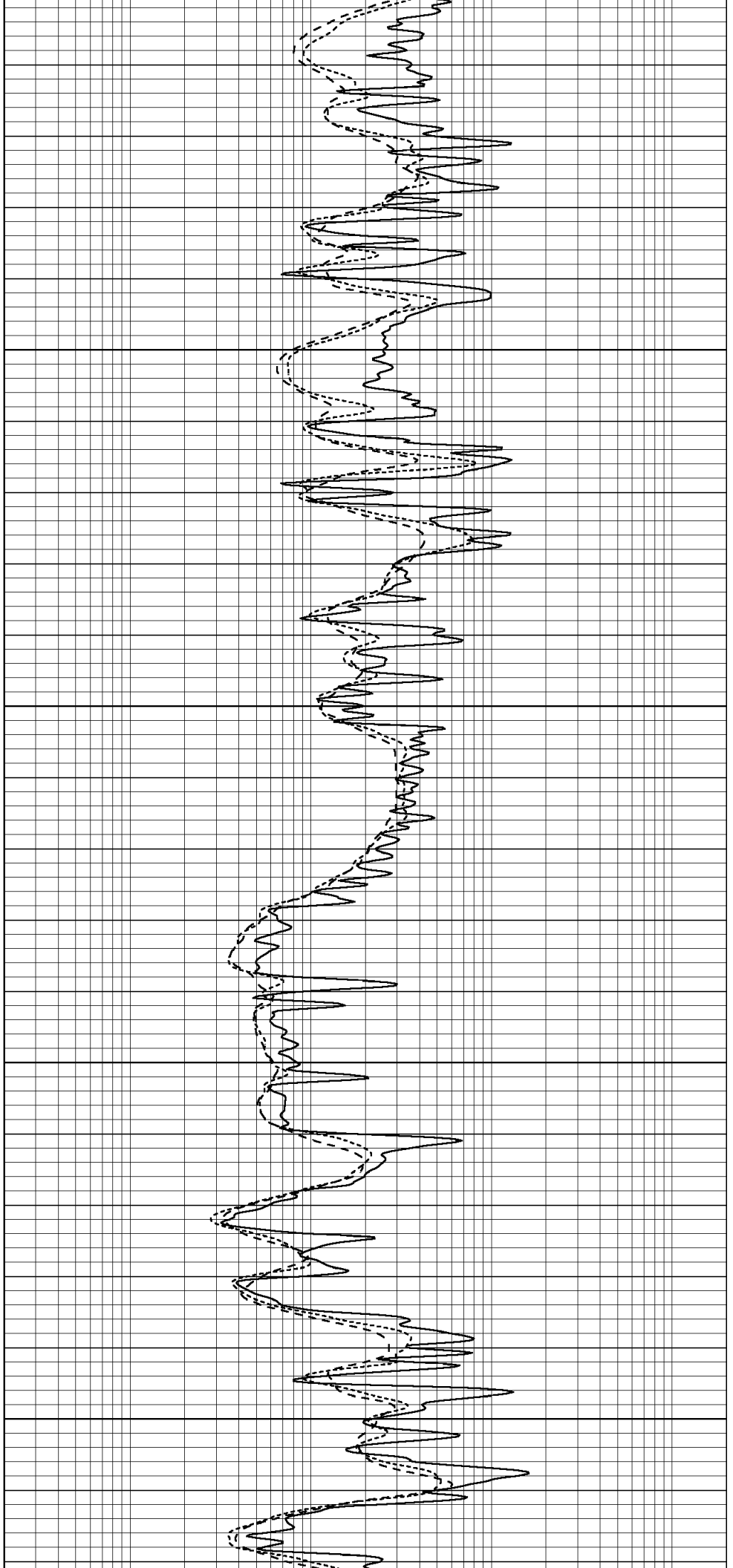


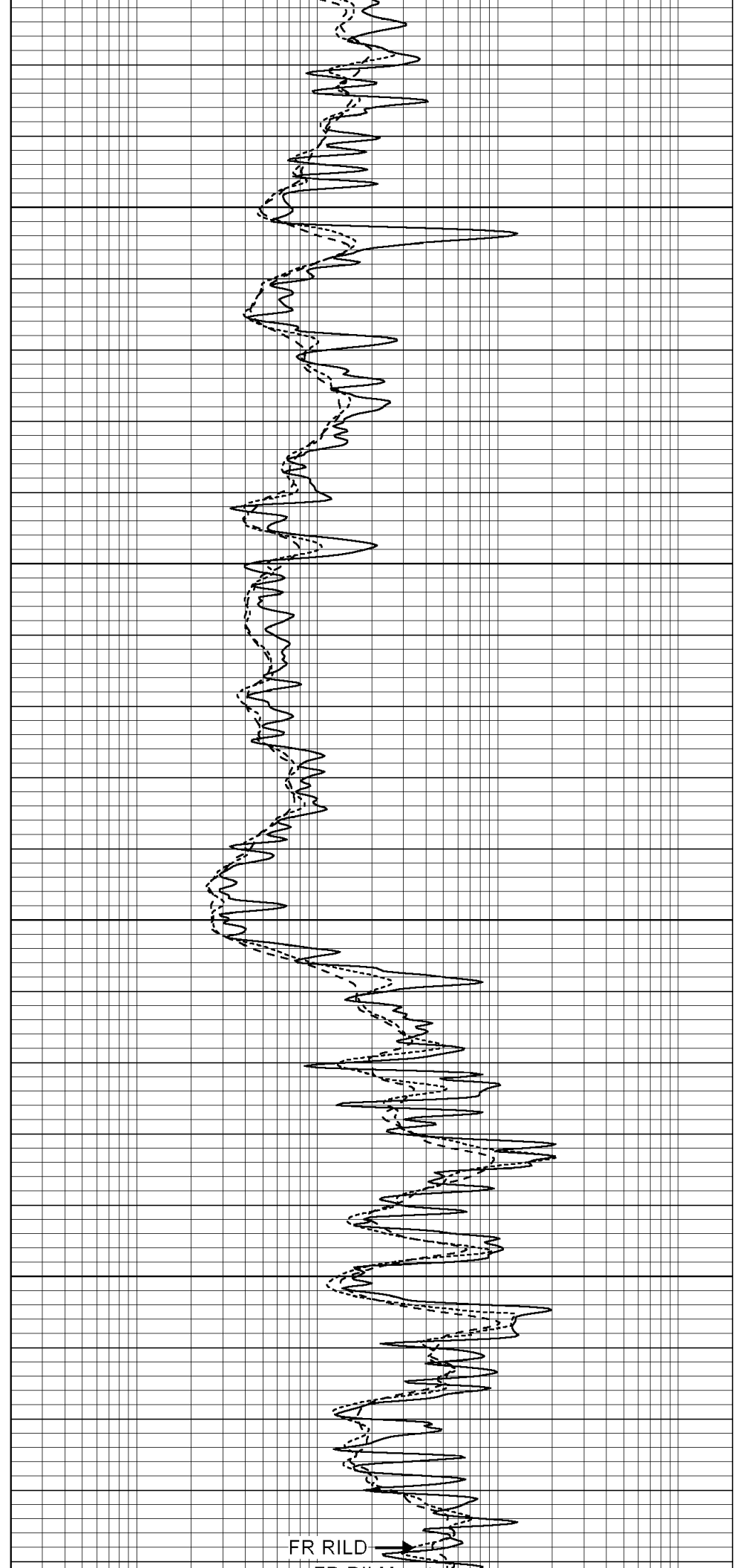
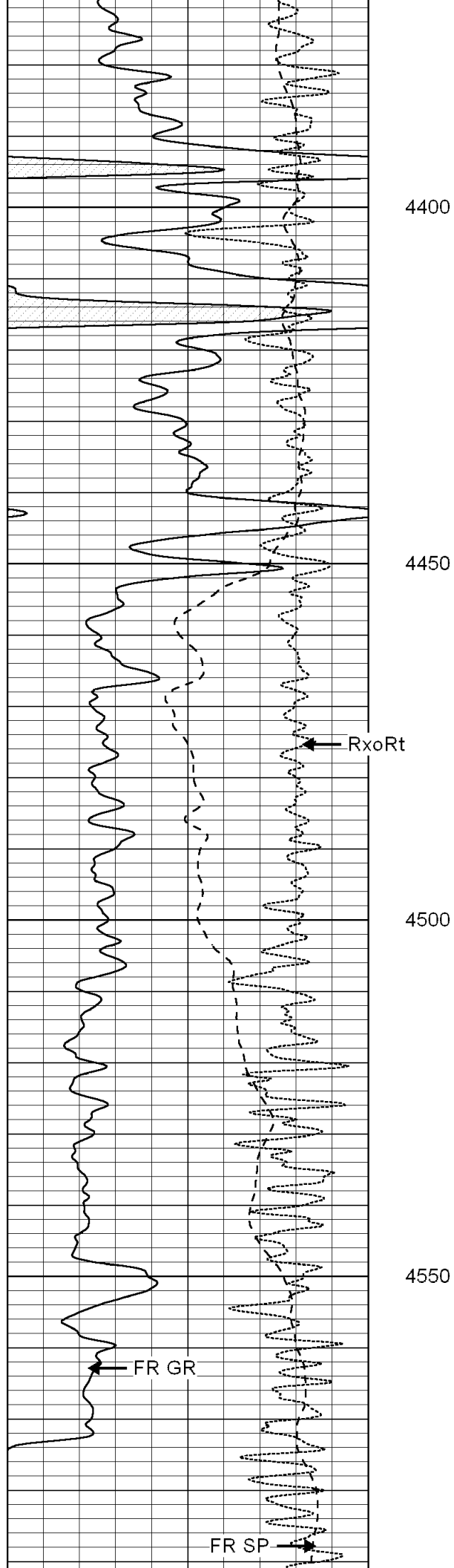
4200

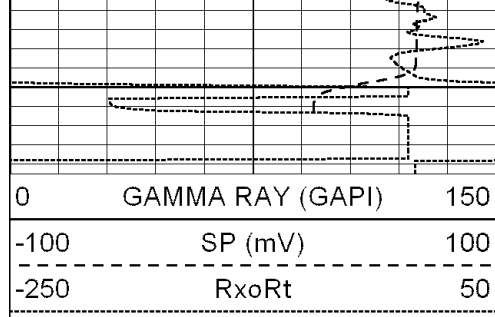
4250

4300

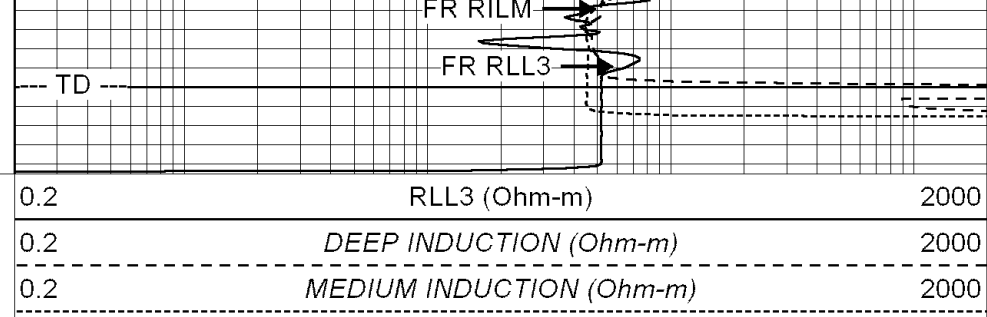
4350







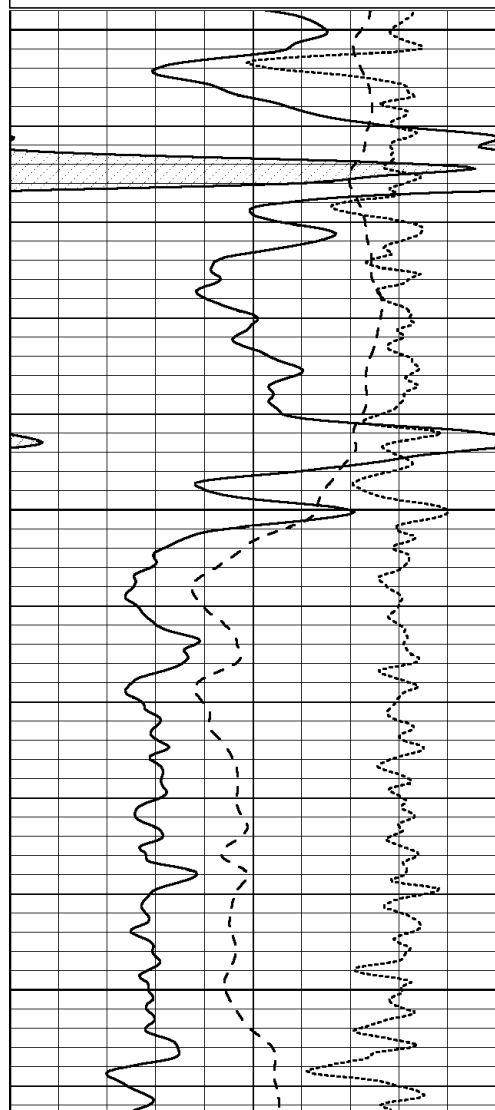
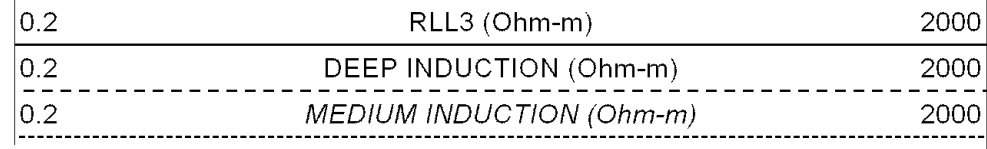
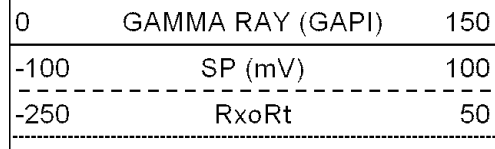
4600



SUPERIOR  
Hays,  
Kansas

# REPEAT SECTION

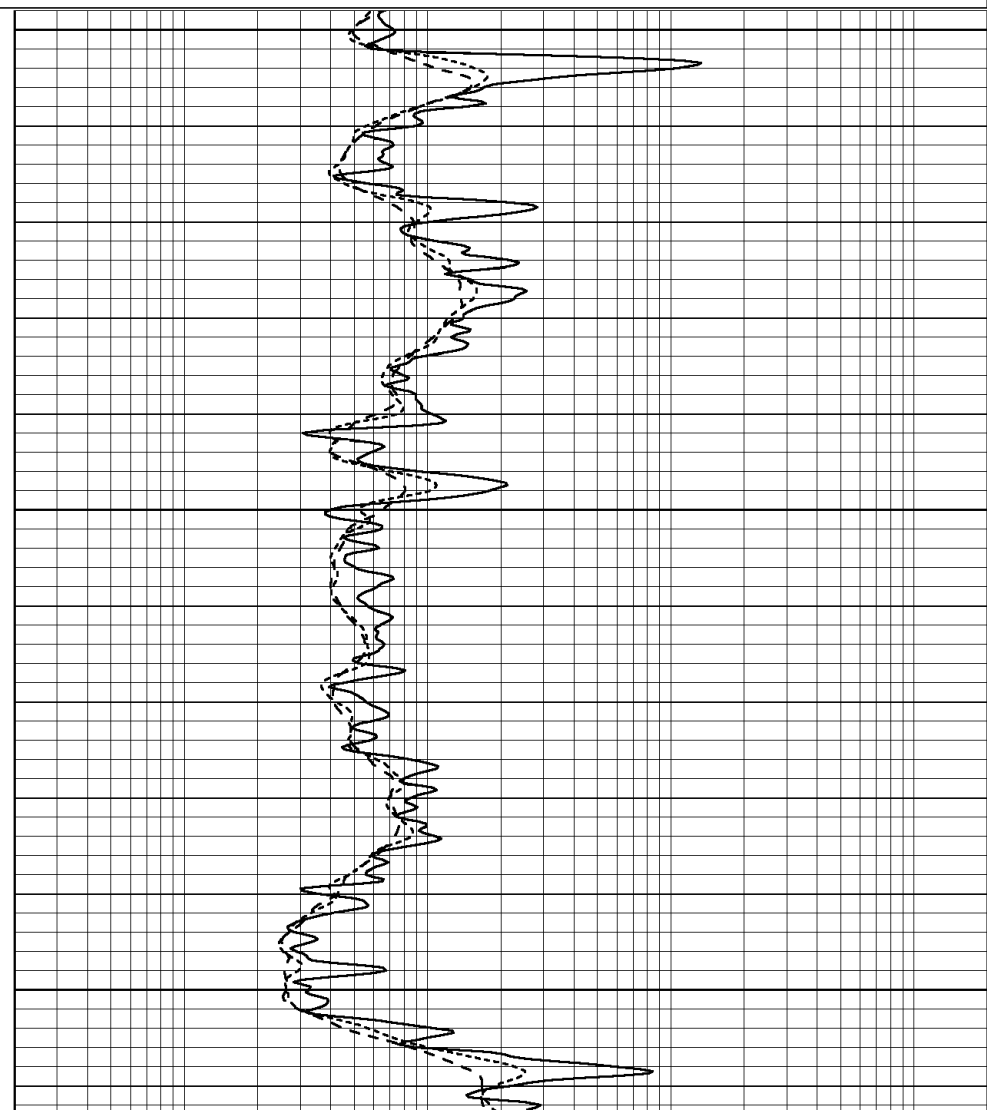
Database File: 004624ddn.db  
 Dataset Pathname: pass2.1  
 Presentation Format: dil  
 Dataset Creation: Mon Apr 05 08:36:17 2010 by Calc Open-Cased 090629  
 Charted by: Depth in Feet scaled 1:240

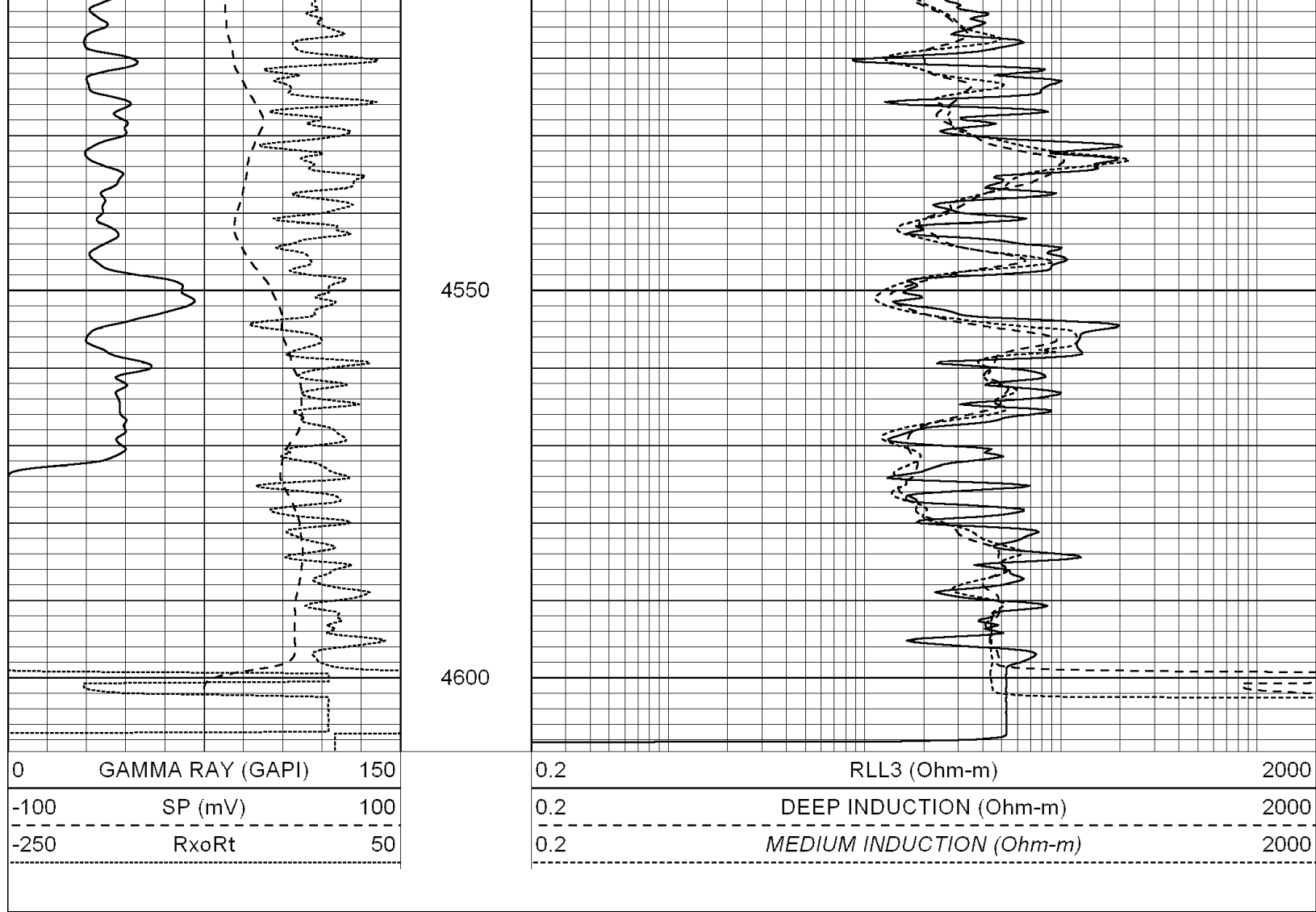


4400

4450

4500





### Calibration Report

Database File: 004624ddn.db  
 Dataset Pathname: pass3.1A  
 Dataset Creation: Mon Apr 05 10:30:47 2010

### Dual Induction Calibration Report

Serial-Model: DIL5-GEAR  
 Performed: Mon Apr 05 08:22:13 2010

Loop:	Readings			References			Results	
	Air	Loop	V	Air	Loop	mmho/m	m	b
Deep	0.004	0.654	V	0.000	400.000	mmho/m	550.000	-10.000
Medium	-0.005	0.737	V	0.000	462.500	mmho/m	520.000	-14.000
Internal:	Zero	Cal		Zero	Cal		m	b
Deep	0.006	0.655	V	0.000	400.000	mmho/m	615.668	-3.483
Medium	0.010	0.747	V	0.000	462.500	mmho/m	627.607	-6.064

### Compensated Density Calibration Report

Serial-Model: GEAR1-GEARHART  
 Source / Verifier: 147 / 147  
 Master Calibration Performed: Mon Apr 05 08:09:25 2010

Master Calibration

	Density		Far Detector		Near Detector	
Magnesium	1.710	g/cc	1243.76		629.14	cps
Aluminum	2.580	g/cc	282.16		435.01	cps
Spine Angle = 76.03			Density/Spine Ratio = 0.569			
	Size		Reading			
Small Ring	8.50	in	3.68		V	
Large Ring	14.00	in	6.06		V	

### Compensated Neutron Calibration Report

Serial Number: NEU\_11  
Tool Model: G

#### CALIBRATION

Detector	Readings		Target		Normalization
Short Space	1.00	cps	1.00	cps	1.0000
Long Space	1.00	cps	1.00	cps	1.0000

### Gamma Ray Calibration Report

Serial Number: GR5  
Tool Model: OPEN  
Performed: Mon Apr 05 09:12:31 2010

Calibrator Value: 1.0 GAPI

Background Reading: 0.0 cps  
Calibrator Reading: 1.0 cps

Sensitivity: 0.6000 GAPI/cps