

LOG-TECH



Dual Induction Log

DIGITAL LOG

(785) 625-3858

API No.

15-163-23,817-00-00

Company John O. Farmer, Inc.

Well Vohs C #1

Field Wildcat

County Rooks State

Kansas

Location 1650' FNL & 1860' FWL

Other Services
CNL/CDL
MEL

Sec: 19 Twp: 10S Rge: 19W

Elevation

Permanent Datum

Ground Level

Elevation 2066

Log Measured From

Kelly Bushing 5 Ft. Above Perm. Datum

Drilling Measured From

Frotkelly Bushing

K.B. 2071
D.F. 2066
G.L.

Date 8/18/2009

Run Number One

Depth Driller 3725

Depth Logger 3725

Bottom Logged Interval 3724

Top Log Interval Surface Csg.

Casing Driller 8.625 @ 219

Casing Logger 218

Bit Size 7.875

Type Fluid in Hole Chemical

Salinity, ppm CL 4.000

Density / Viscosity 9.2 59

pH / Fluid Loss 10.5 9.2

Source of Sample Flowline

Rm @ Meas. Temp .6 @ 74

Rmf @ Meas. Temp .45 @ 74

Rmc @ Meas. Temp .81 @ 74

Source of Rmf / Rmc Charts

Rm @ BHT .38 @ 115

Operating Rig Time 4 Hours

Max Rec. Temp. F 115

Equipment Number 10

Location Hays

Recorded By C. McLaughlin

Witnessed By Steven Murphy

<<< Fold Here >>>

All interpretations are opinions based on inferences from electrical or other measurements and we cannot and do not guarantee the accuracy or correctness of any interpretation, and we shall not, except in the case of gross or willful negligence on our part, be liable or responsible for any loss, costs, damages, or expenses incurred or sustained by anyone resulting from any interpretation made by any of our officers, agents or employees. These interpretations are also subject to our general terms and conditions set out in our current Price Schedule.

Comments

Thank you for using Log-Tech, Inc.
(785) 625-3858

N of Hays to Co. line, 2N to CC Rd, 3.5W to 14 Rd
1N, W into

Database File: farmrhd.db
Dataset Pathname: dil/frmdet
Presentation Format: dil2in
Dataset Creation: Tue Aug 18 17:29:18 2009
Charted by: Depth in Feet scaled 1:600

0	Gamma Ray	150
-200	SP	0

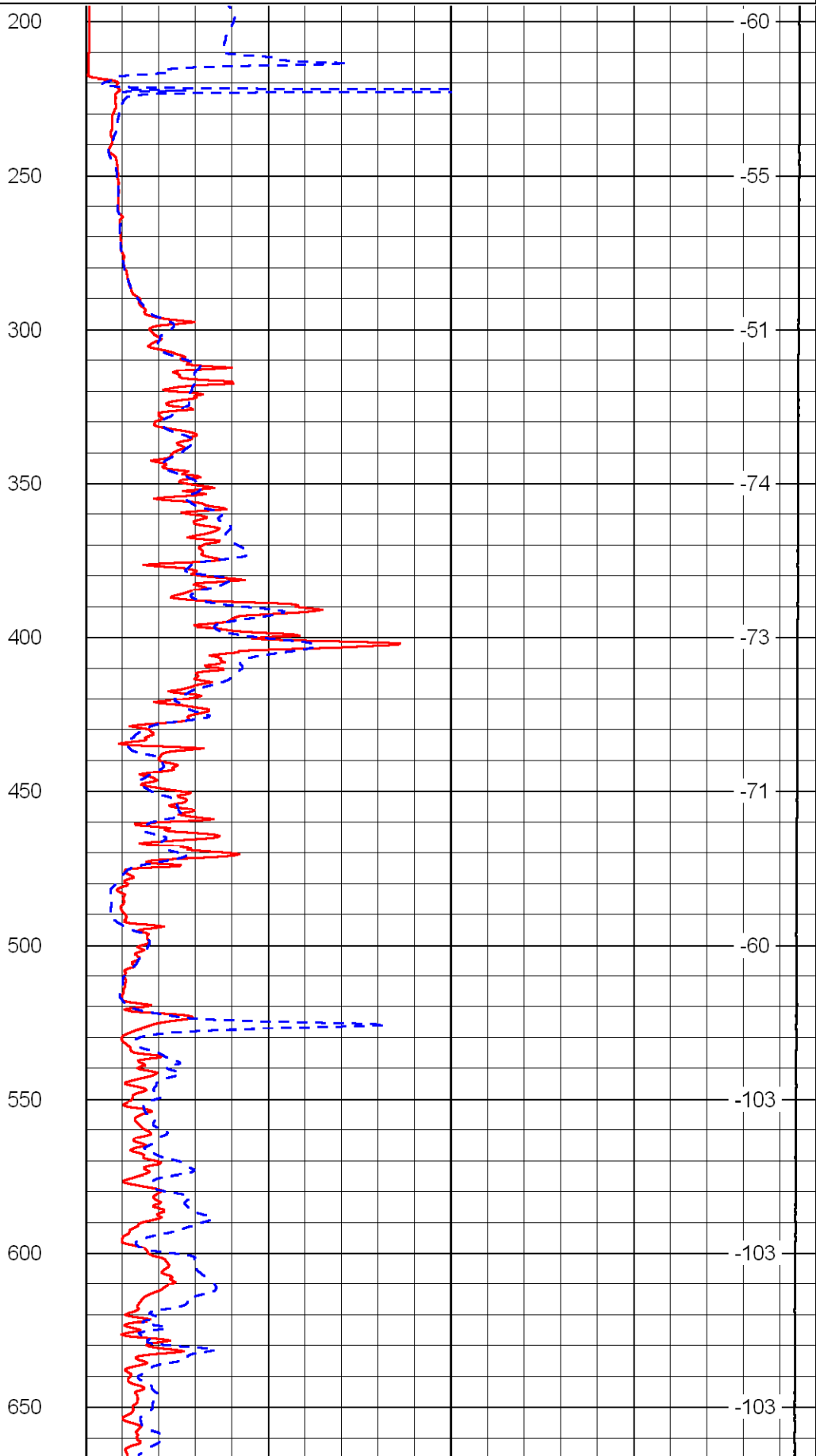
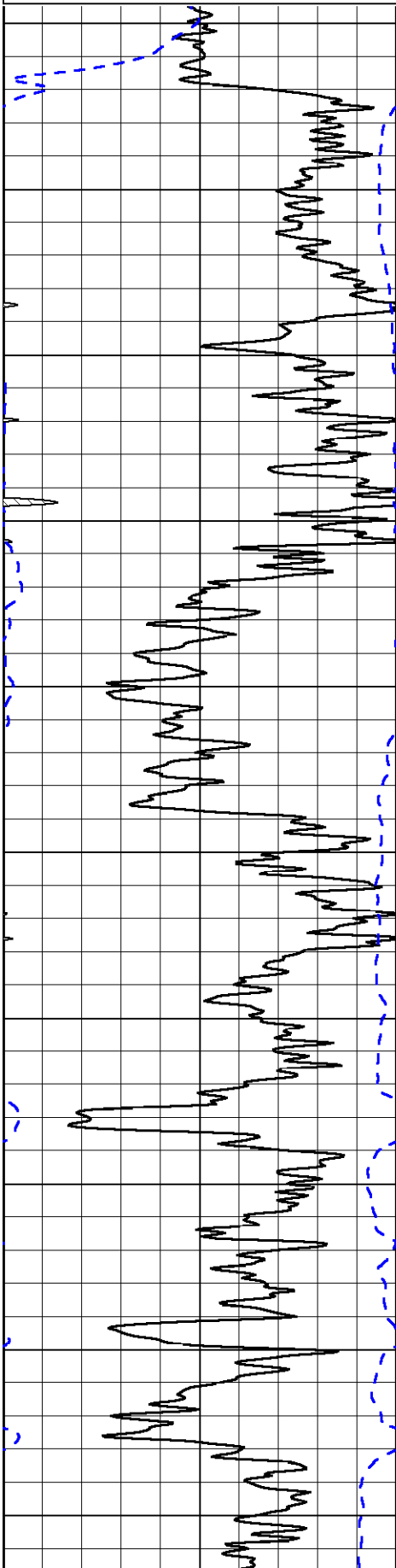
0	Shallow Resistivity	50
0	Deep Resistivity	50

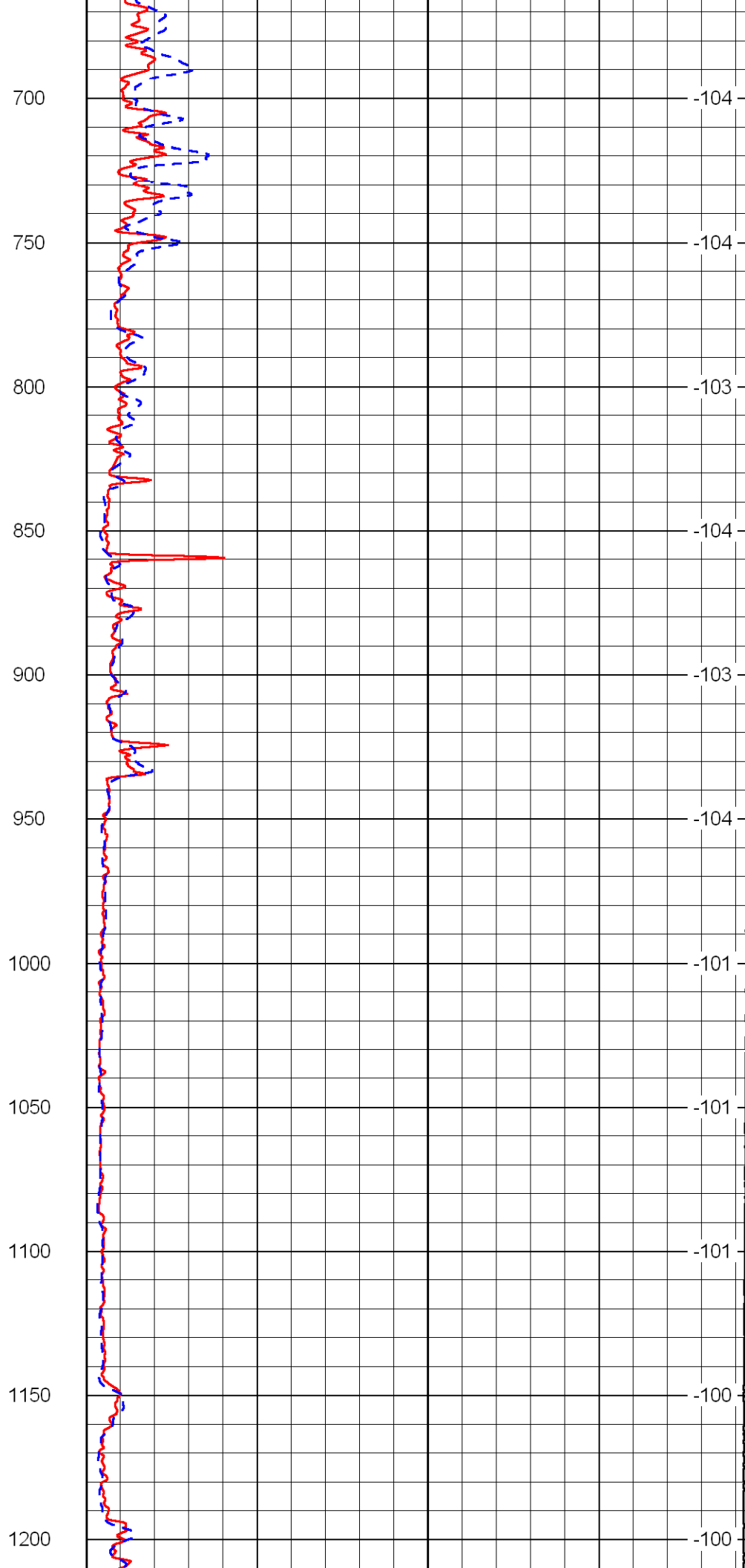
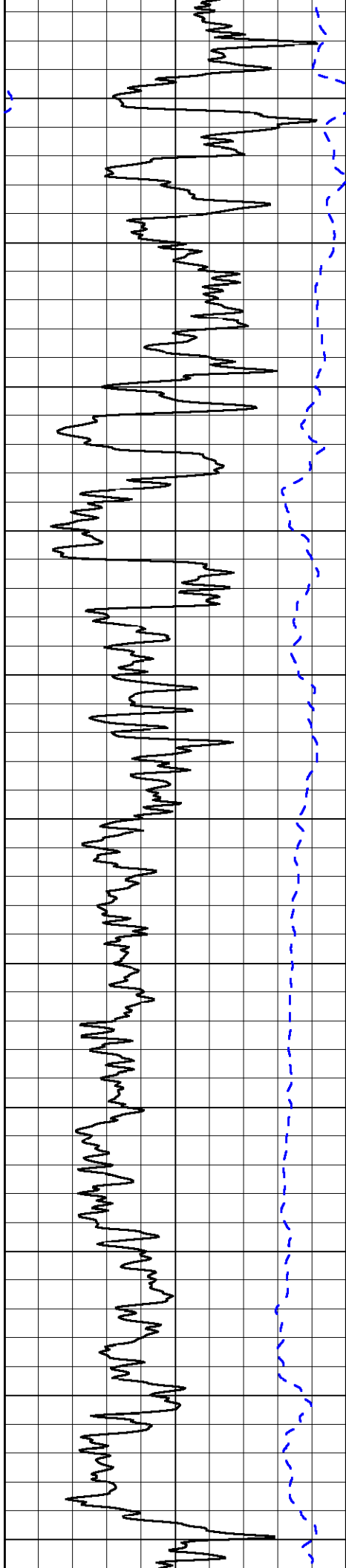
LSPD

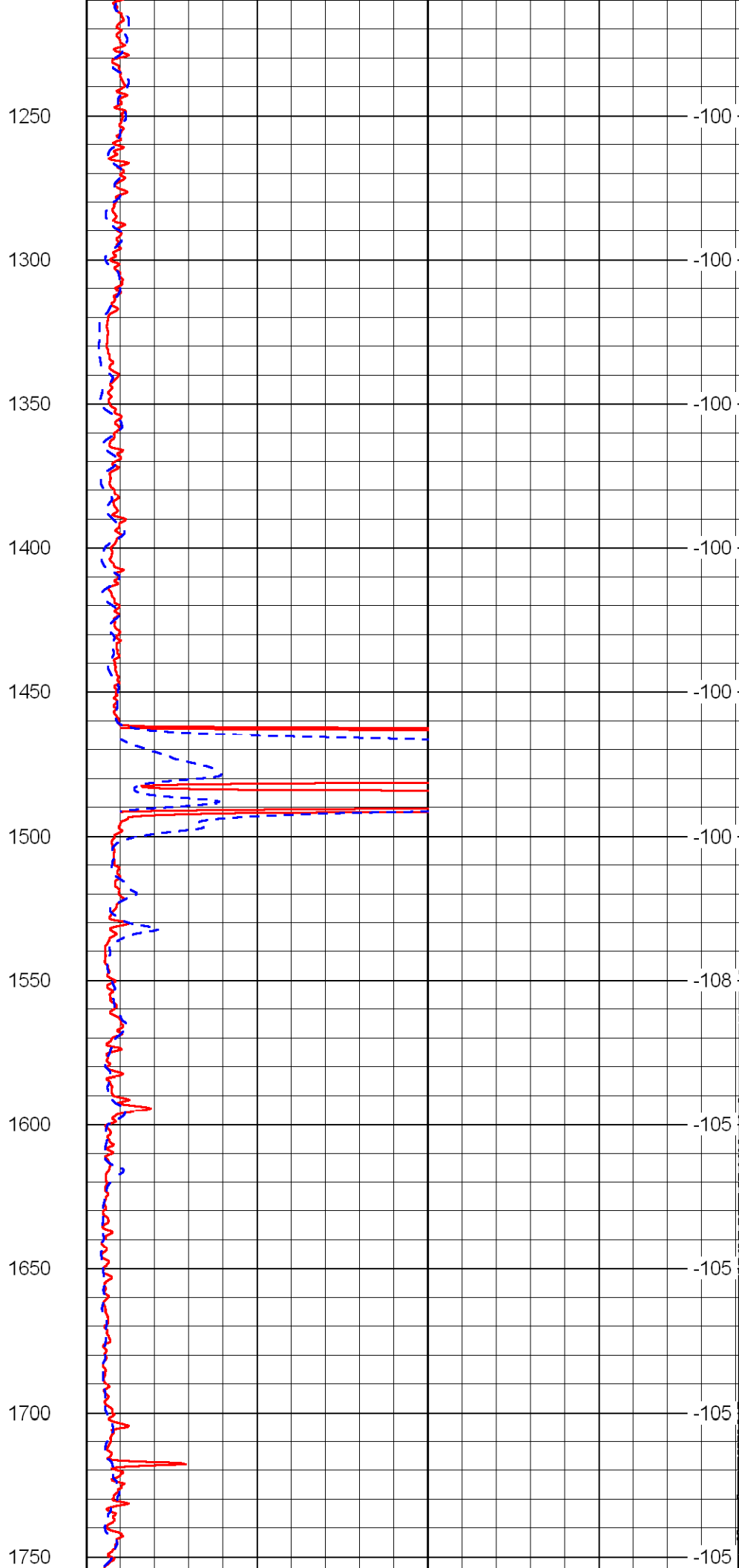
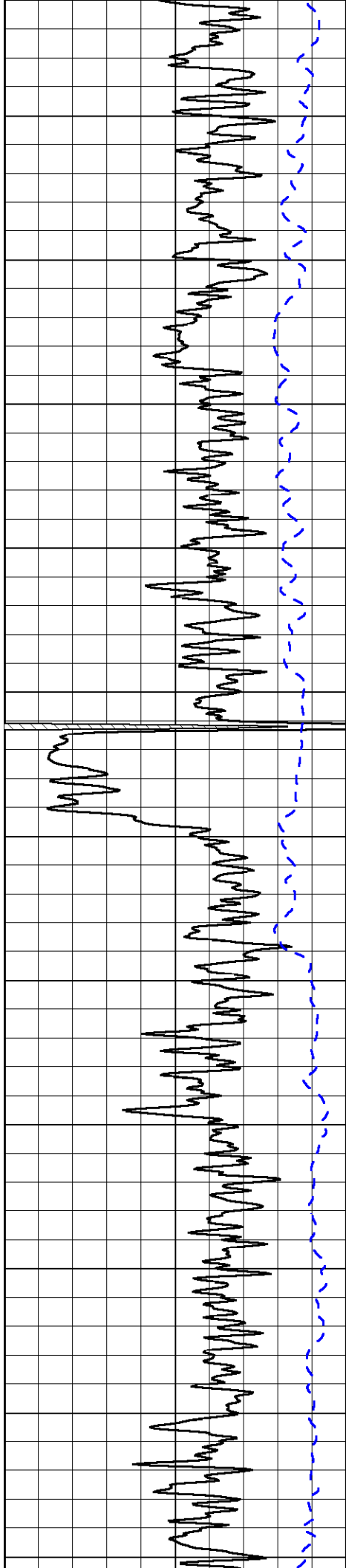
1000	Conductivity	0
------	--------------	---

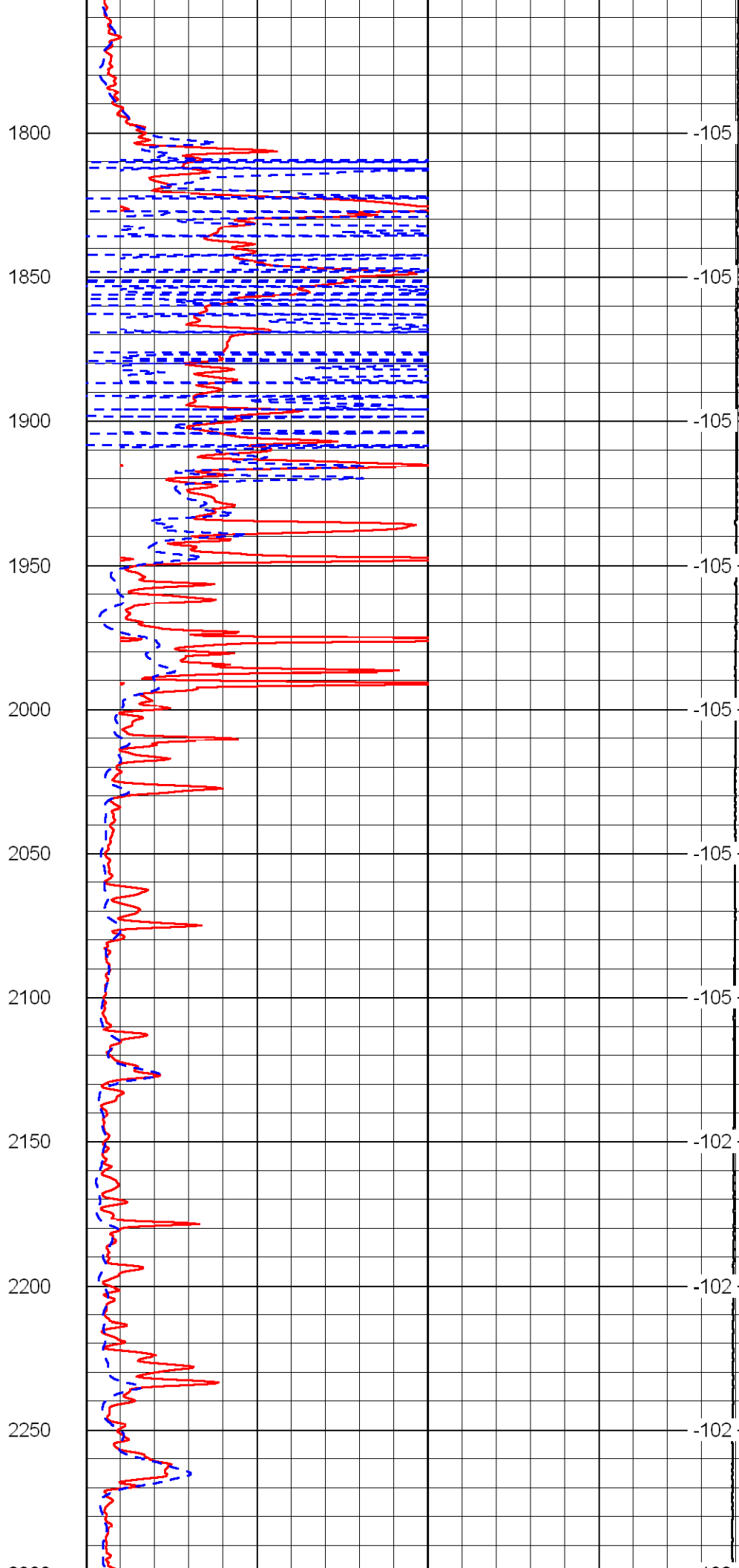
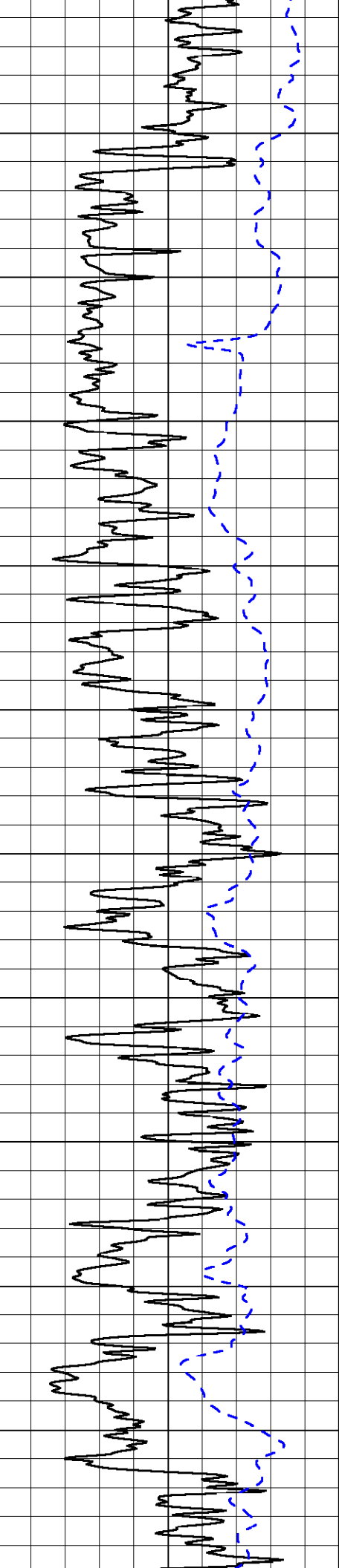
15000	Line Tension	0
-------	--------------	---

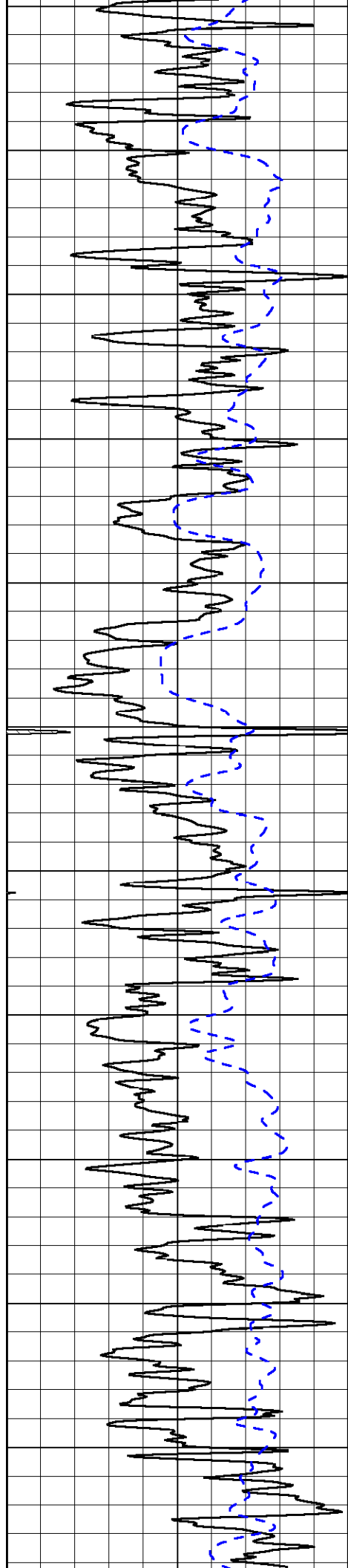
50	Shallow Resistivity	500
50	Deep Resistivity	500



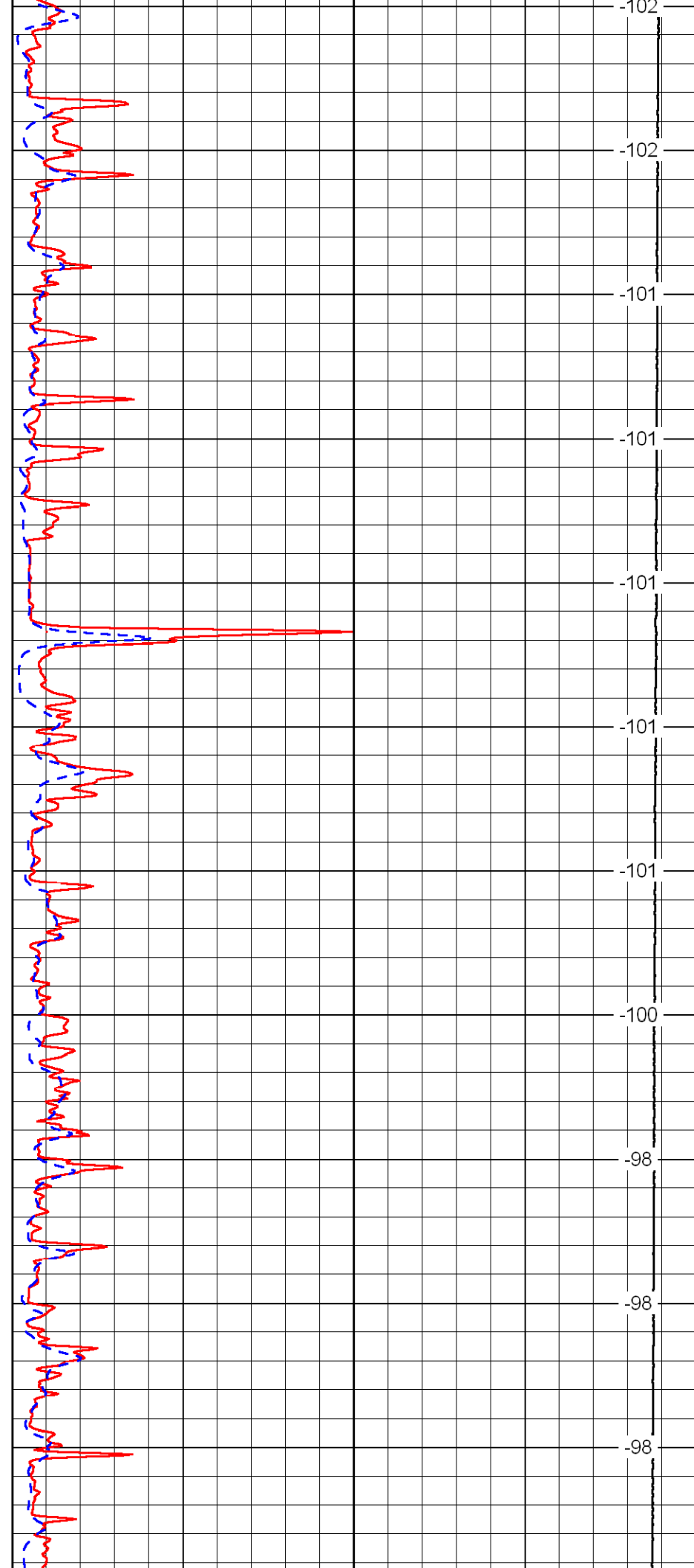




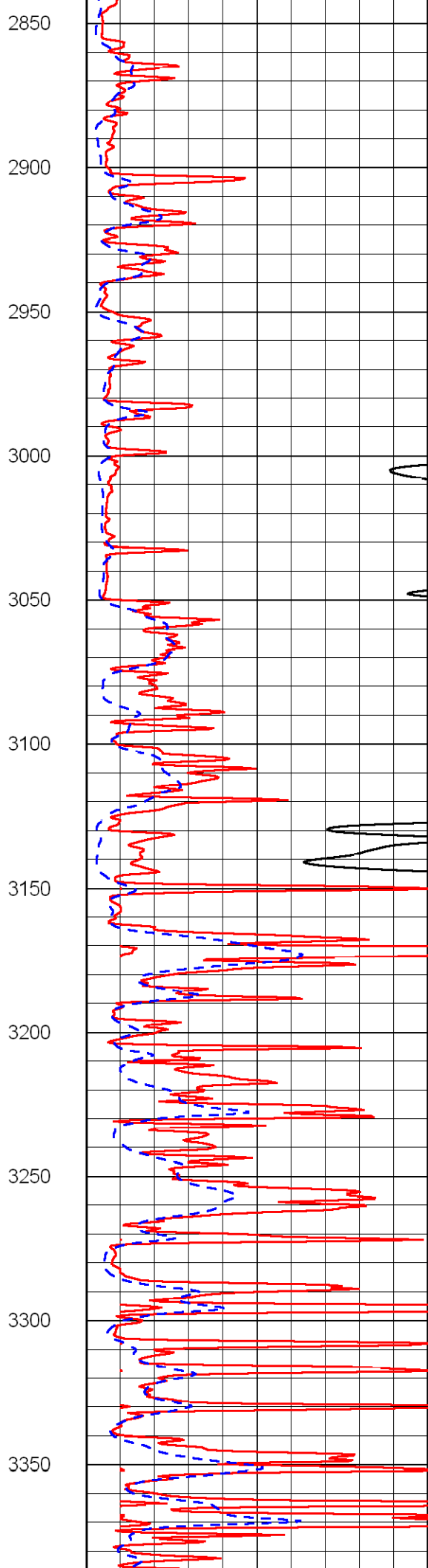
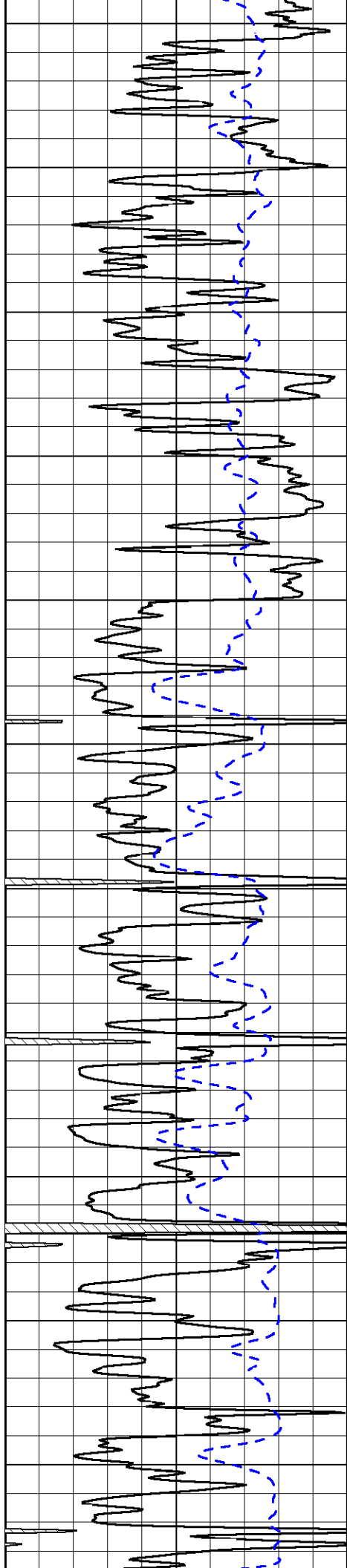


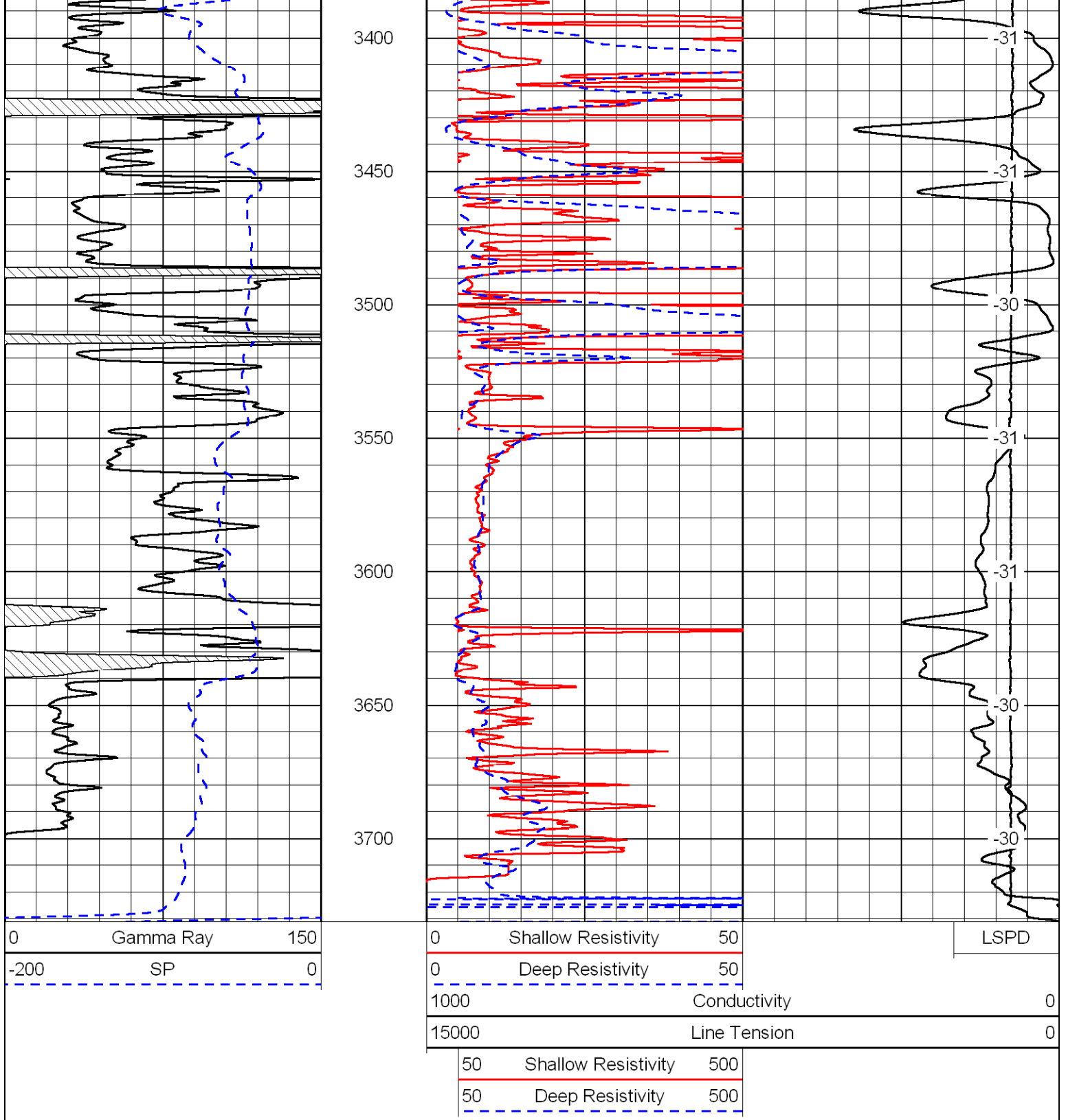


2300
2350
2400
2450
2500
2550
2600
2650
2700
2750
2800

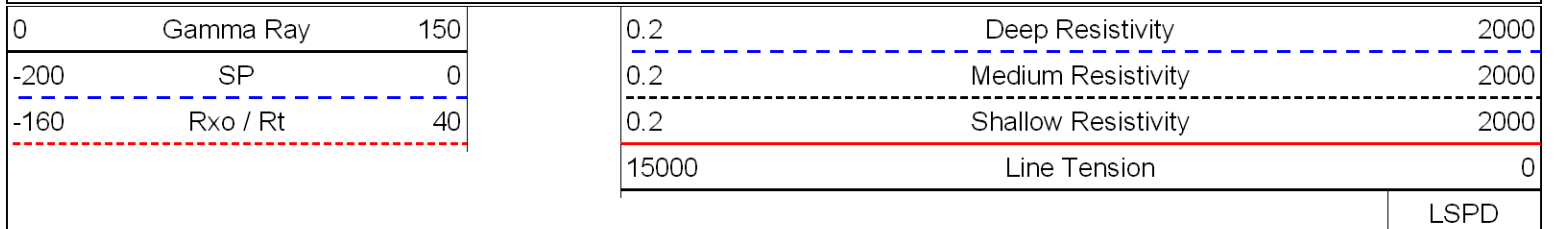


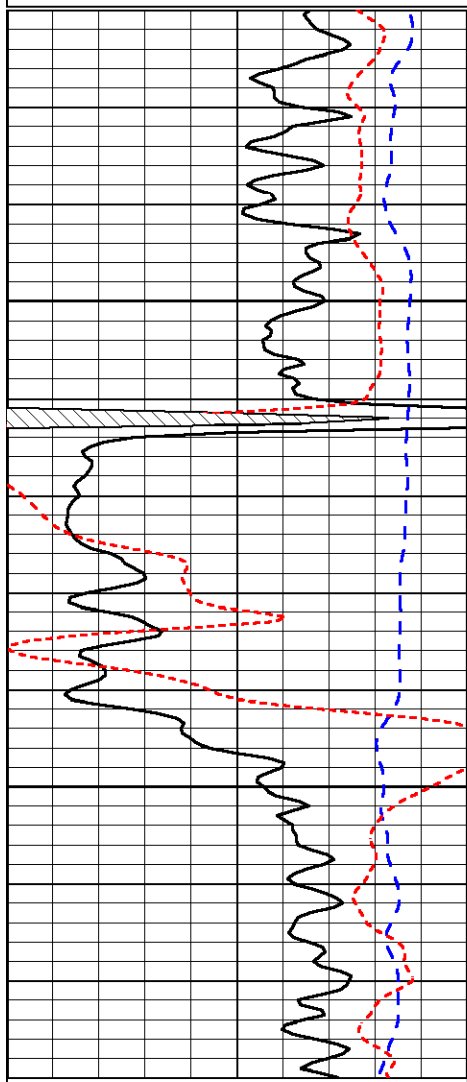
-102
-102
-101
-101
-101
-101
-101
-101
-100
-98
-98
-98





Database File: farmrhd.db
 Dataset Pathname: dil/frmdet
 Presentation Format: dil
 Dataset Creation: Tue Aug 18 17:29:18 2009
 Charted by: Depth in Feet scaled 1:240

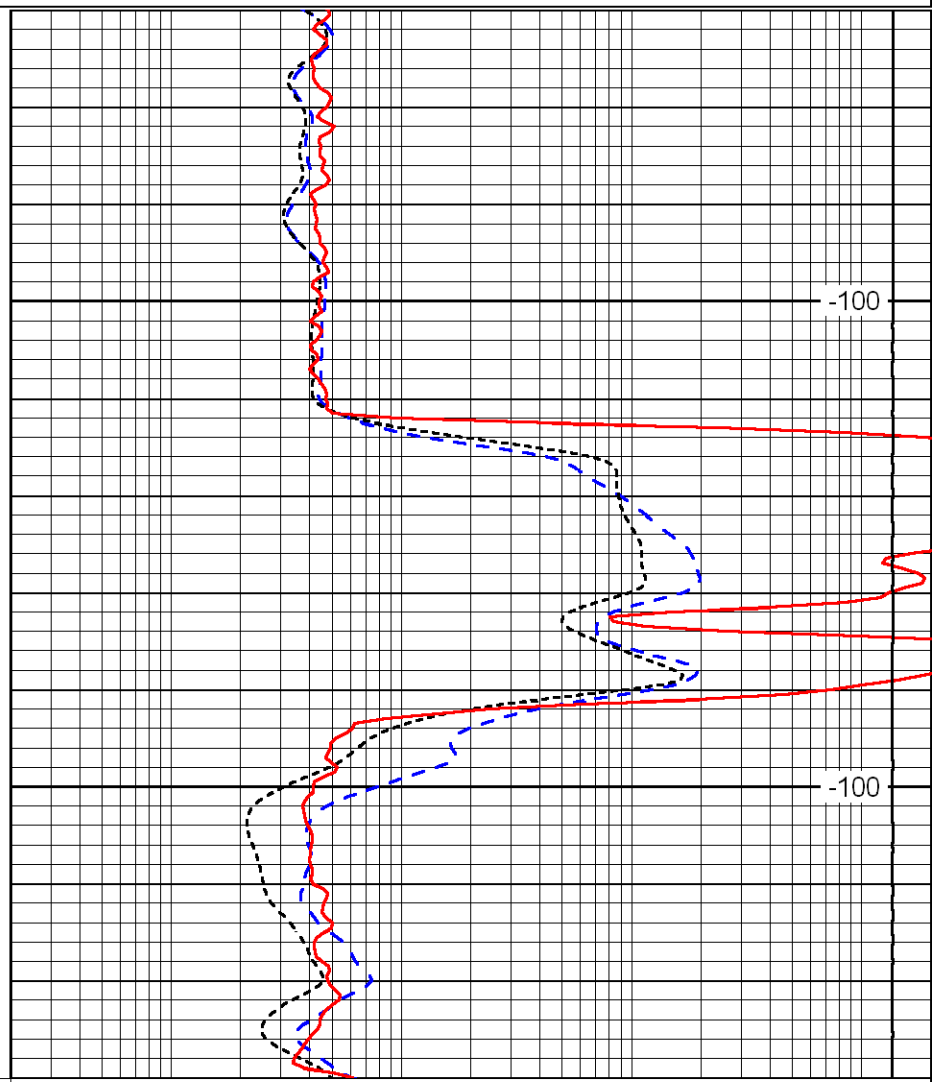




0	Gamma Ray	150
-200	SP	0
-160	Rxo / Rt	40

1450

1500



0.2	Deep Resistivity	2000
0.2	Medium Resistivity	2000
0.2	Shallow Resistivity	2000
15000	Line Tension	0

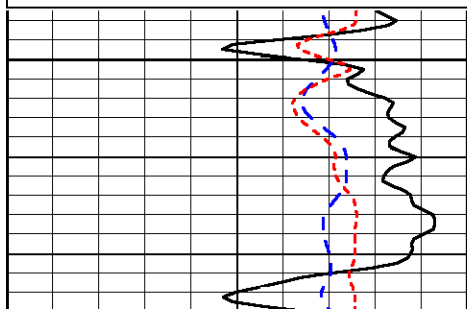
LSPD

Database File: farmrhd.db
 Dataset Pathname: dil/frmdet
 Presentation Format: dil
 Dataset Creation: Tue Aug 18 17:29:18 2009
 Charted by: Depth in Feet scaled 1:240

0	Gamma Ray	150
-200	SP	0
-160	Rxo / Rt	40

0.2	Deep Resistivity	2000
0.2	Medium Resistivity	2000
0.2	Shallow Resistivity	2000
15000	Line Tension	0

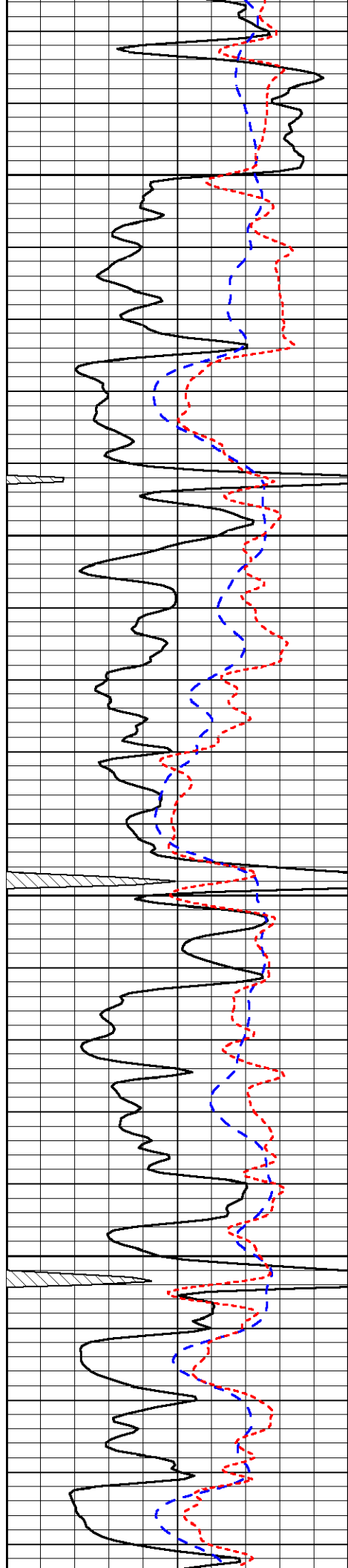
LSPD



3000



-32

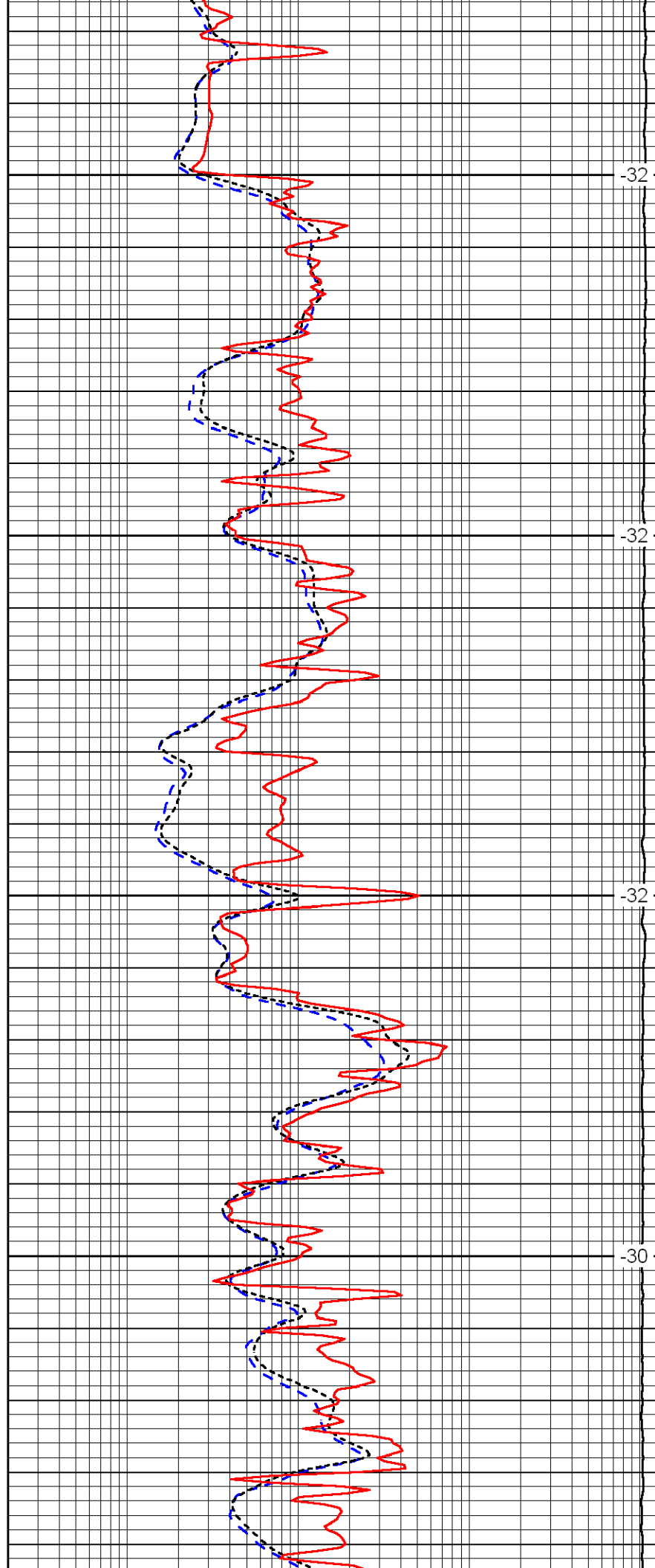


3050

3100

3150

3200

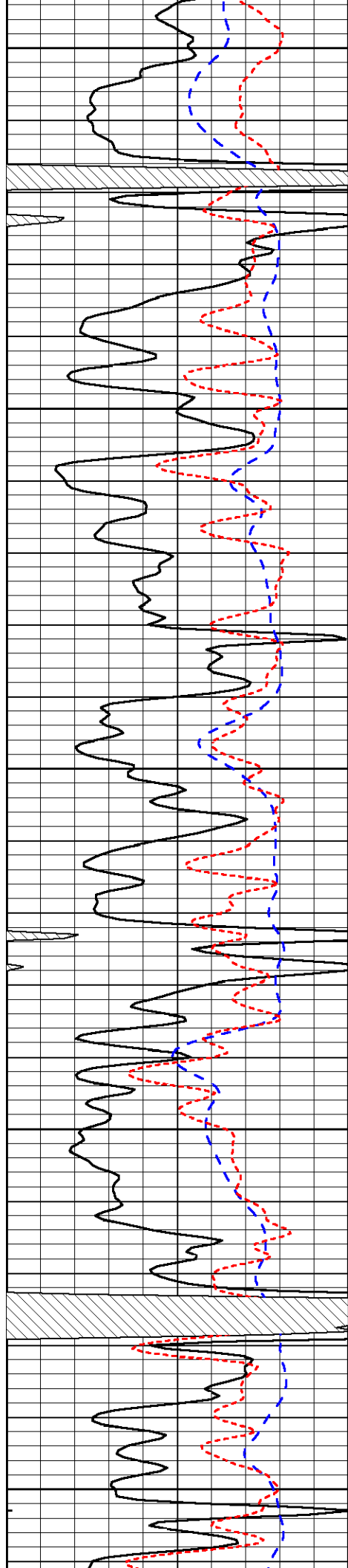


-32

-32

-32

-30



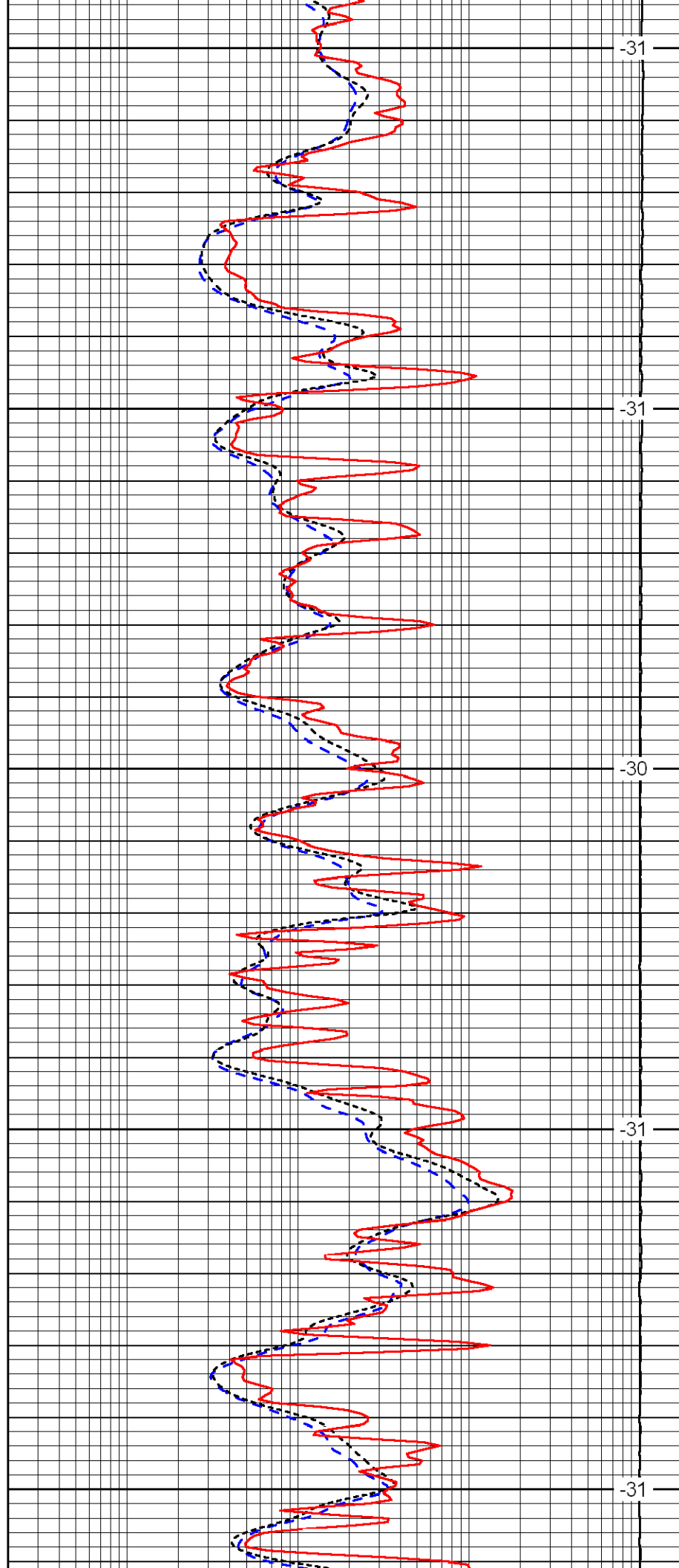
3250

3300

3350

3400

3450



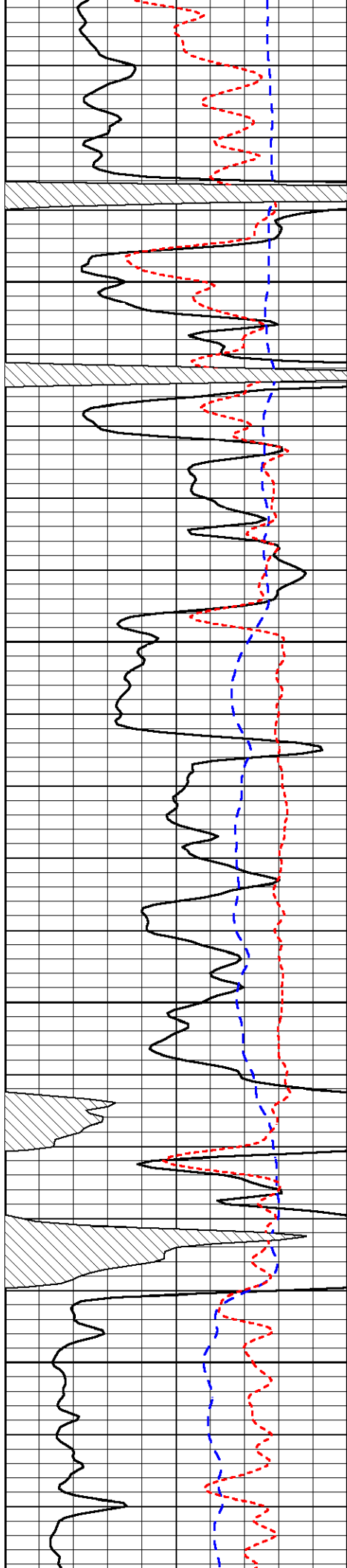
-31

-31

-30

-31

-31

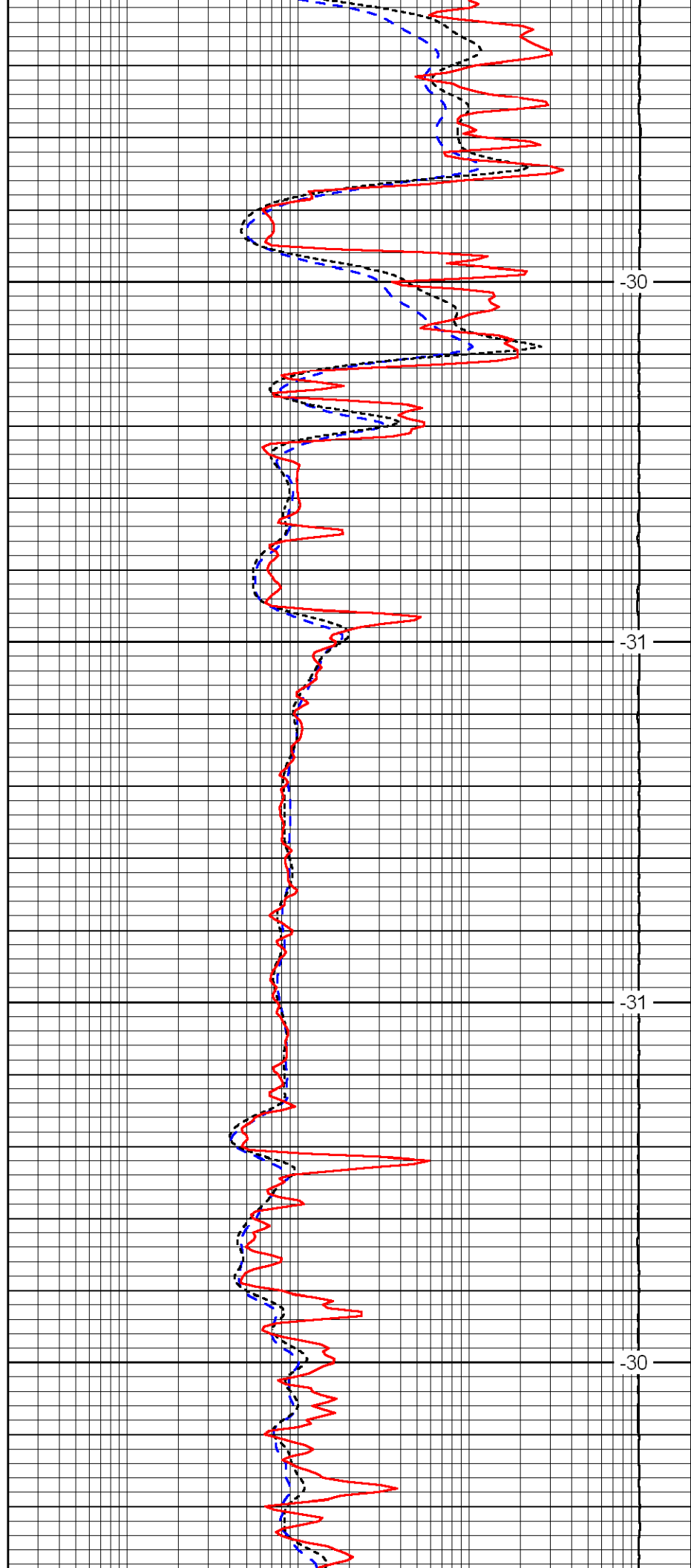


3500

3550

3600

3650

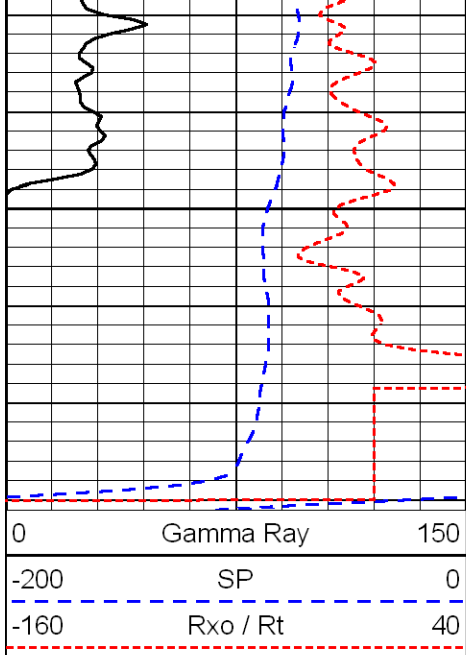


-30

-31

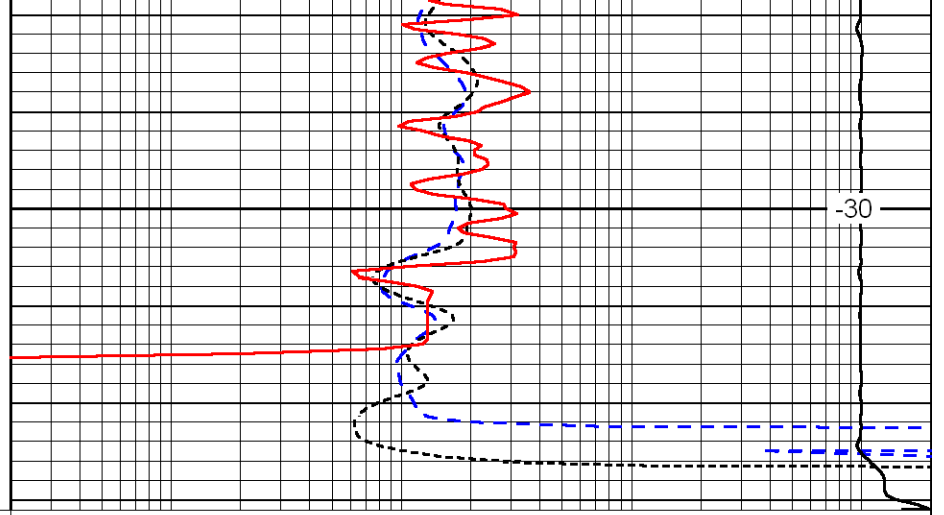
-31

-30



3700

0	Gamma Ray	150
-200	SP	0
-160	Rxo / Rt	40



-30

0.2	Deep Resistivity	2000
0.2	Medium Resistivity	2000
0.2	Shallow Resistivity	2000
15000	Line Tension	0

LSPD