



# Microresistivity Log

**DIGITAL LOG** (785) 625-3858

|                        |                       |                         |                                     |
|------------------------|-----------------------|-------------------------|-------------------------------------|
| API No.                | 15-163-23,817-00-00   |                         |                                     |
| Company                | John O. Farmer, Inc.  |                         |                                     |
| Well                   | Vohs C #1             |                         |                                     |
| Field                  | Wildcat               |                         |                                     |
| County                 | Rooks                 | State                   | Kansas                              |
| Location               | 1650' FNL & 1860' FWL |                         |                                     |
| Sec:                   | 19                    | Twp:                    | 10S Rge: 19W                        |
| Permanent Datum        | Ground Level          | Elevation               | 2066                                |
| Log Measured From      | Kelly Bushing         | 5 Ft. Above Perm. Datum |                                     |
| Drilling Measured From | Kelly Bushing         |                         |                                     |
|                        |                       | Other Services          | CNL/CDL<br>DIL                      |
|                        |                       | Elevation               | K.B. 2071<br>D.F. 2066<br>G.L. 2066 |

|                        |               |     |
|------------------------|---------------|-----|
| Date                   | 8/18/2009     |     |
| Run Number             | Two           |     |
| Depth Driller          | 3725          |     |
| Depth Logger           | 3725          |     |
| Bottom Logged Interval | 3724          |     |
| Top Log Interval       | 3000          |     |
| Casing Driller         | 8.625 @ 219   |     |
| Casing Logger          | 219           |     |
| Bit Size               | 7.875         |     |
| Type Fluid in Hole     | Chemical      |     |
| Salinity, ppm CL       | 4.000         |     |
| Density / Viscosity    | 9.2           | 59  |
| pH / Fluid Loss        | 10.5          | 9.2 |
| Source of Sample       | Flowline      |     |
| Rm @ Meas. Temp        | .6 @ 74       |     |
| Rmf @ Meas. Temp       | .45 @ 74      |     |
| Rmc @ Meas. Temp       | .81 @ 74      |     |
| Source of Rmf / Rmc    | Charts        |     |
| Rm @ BHT               | .38 @ 115     |     |
| Operating Rig Time     | 4 Hours       |     |
| Max Rec. Temp. F       | 115           |     |
| Equipment Number       | 10            |     |
| Location               | Hays          |     |
| Recorded By            | C. McLaughlin |     |
| Witnessed By           | Steven Murphy |     |

<<< Fold Here >>>

All interpretations are opinions based on inferences from electrical or other measurements and we cannot and do not guarantee the accuracy or correctness of any interpretation, and we shall not, except in the case of gross or willful negligence on our part, be liable or responsible for any loss, costs, damages, or expenses incurred or sustained by anyone resulting from any interpretation made by any of our officers, agents or employees. These interpretations are also subject to our general terms and conditions set out in our current Price Schedule.

### Comments

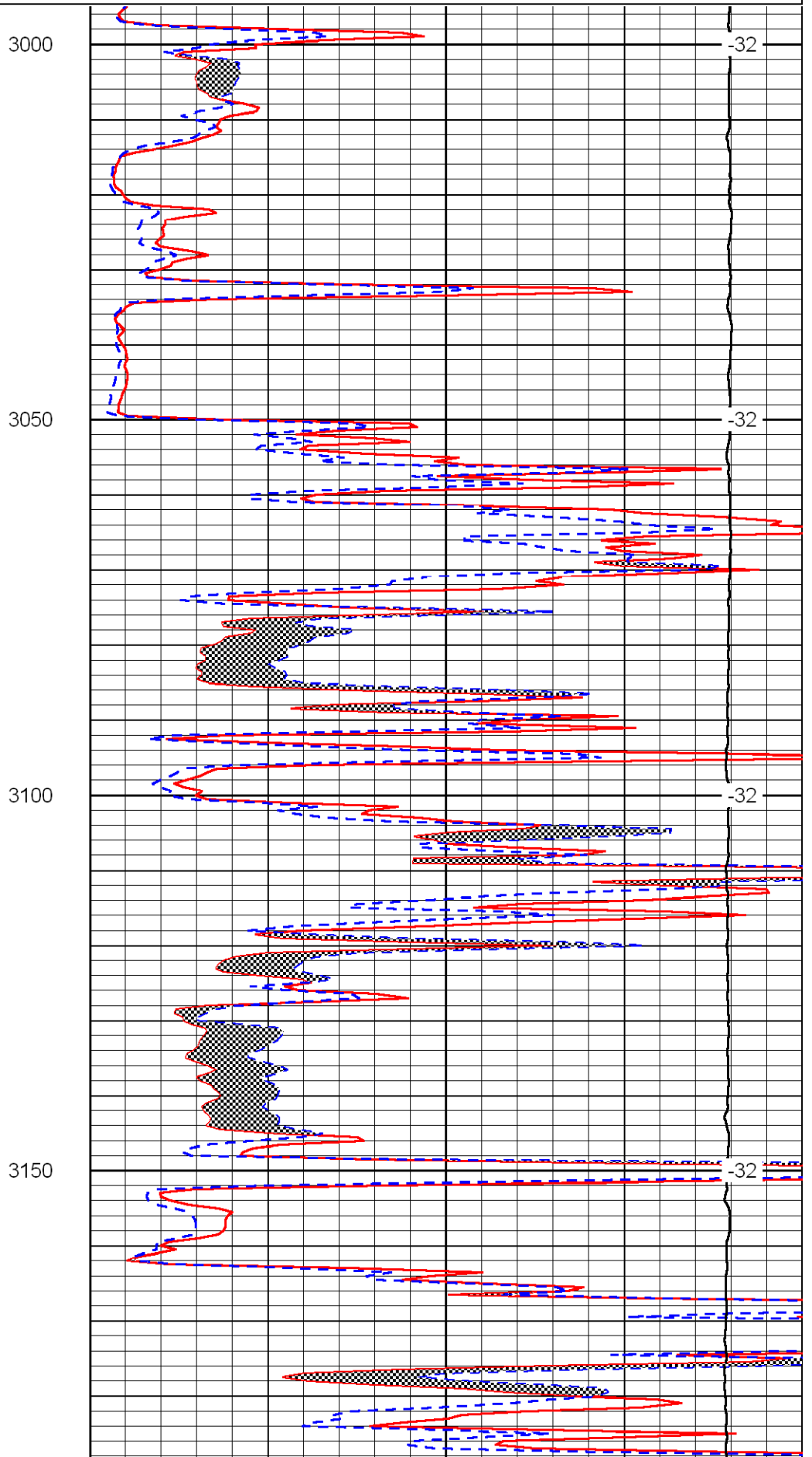
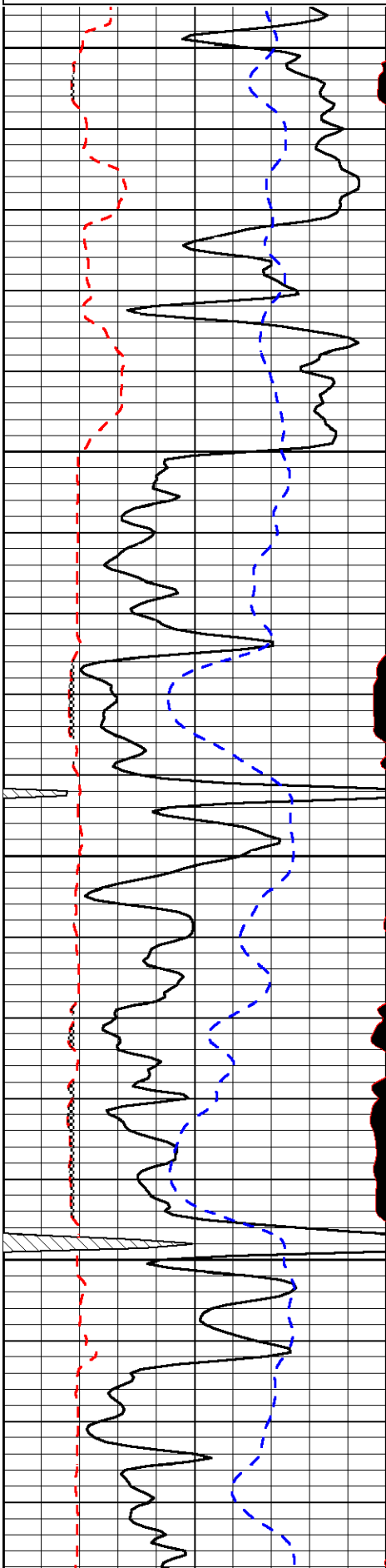
Thank you for using Log-Tech, Inc.  
(785) 625-3858

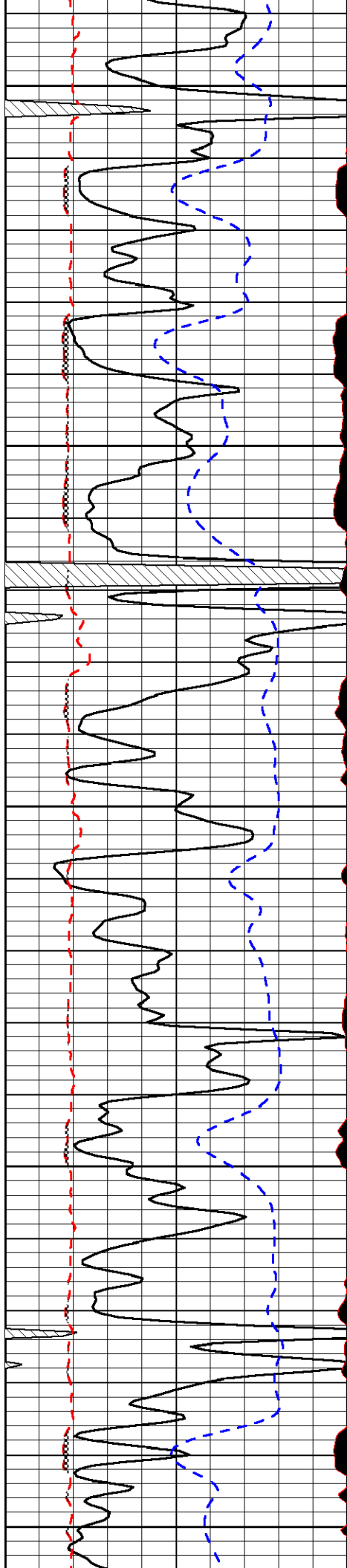
N of Hays to Co. line, 2N to CC Rd, 3.5W to 14 Rd  
1N, W into

|                      |                            |
|----------------------|----------------------------|
| Database File:       | farmrhd.db                 |
| Dataset Pathname:    | dil/frmdet                 |
| Presentation Format: | micro                      |
| Dataset Creation:    | Tue Aug 18 17:29:18 2009   |
| Charted by:          | Depth in Feet scaled 1:240 |

|       |                          |       |
|-------|--------------------------|-------|
| 0     | Gamma Ray                | 150   |
| 6     | Micro Log Caliper (GAPI) | 16    |
| 2.875 | mcal (GAPI)              | 7.875 |
| -200  | SP                       | 0     |

|       |                     |      |
|-------|---------------------|------|
| 0     | Micro Inverse 1 X 1 | 40   |
| 0     | Micro Normal 2"     | 40   |
| 10000 | Line Weight         | 0    |
|       |                     | LSPD |





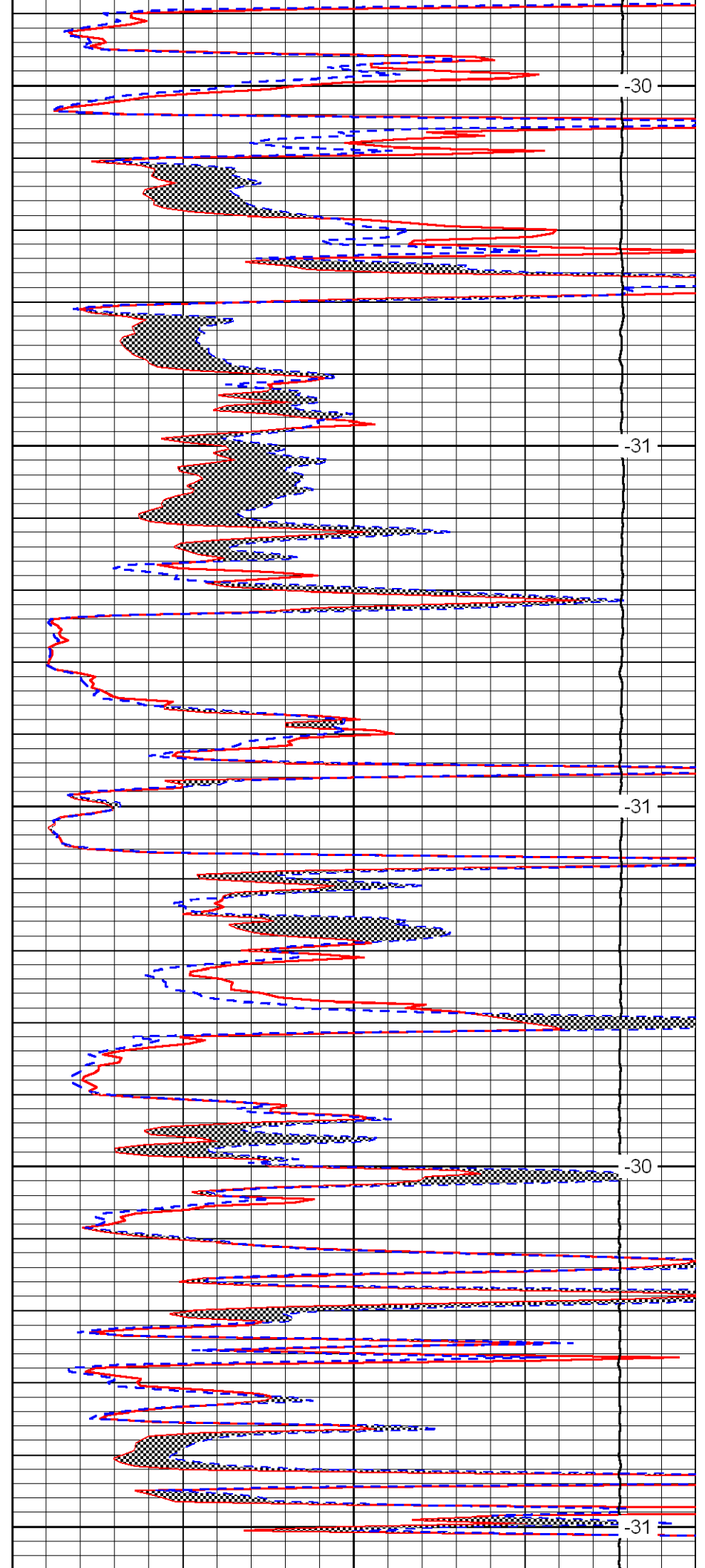
3200

3250

3300

3350

3400



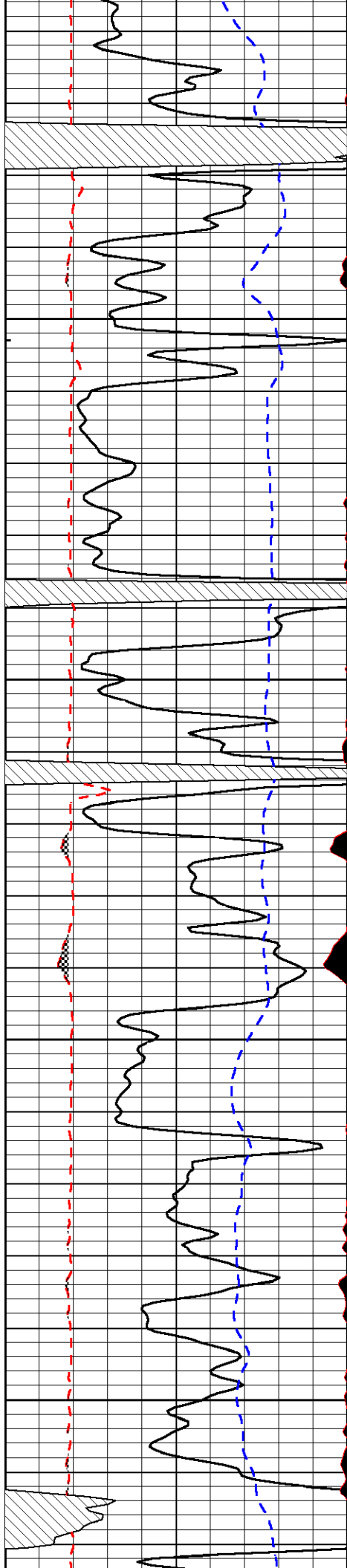
-30

-31

-31

-30

-31

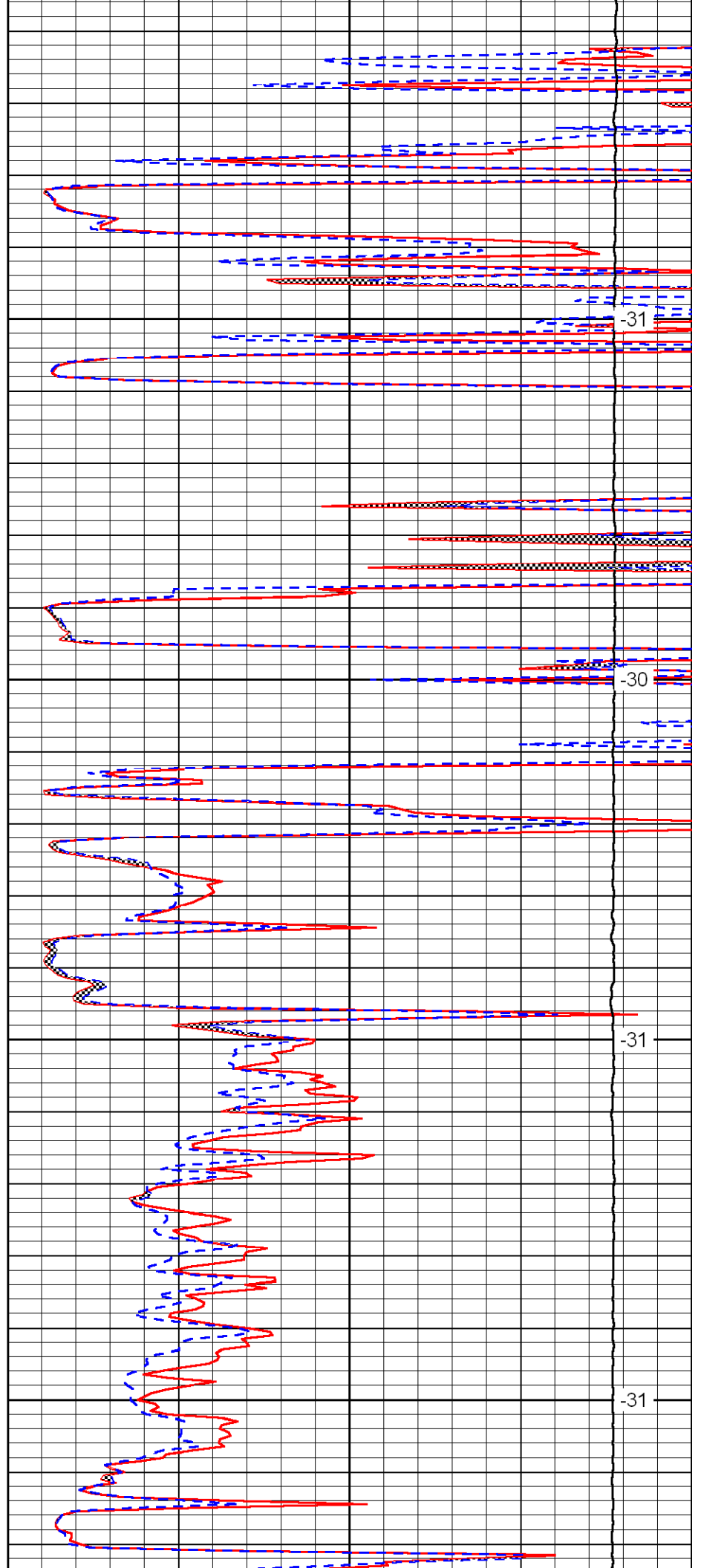


3450

3500

3550

3600

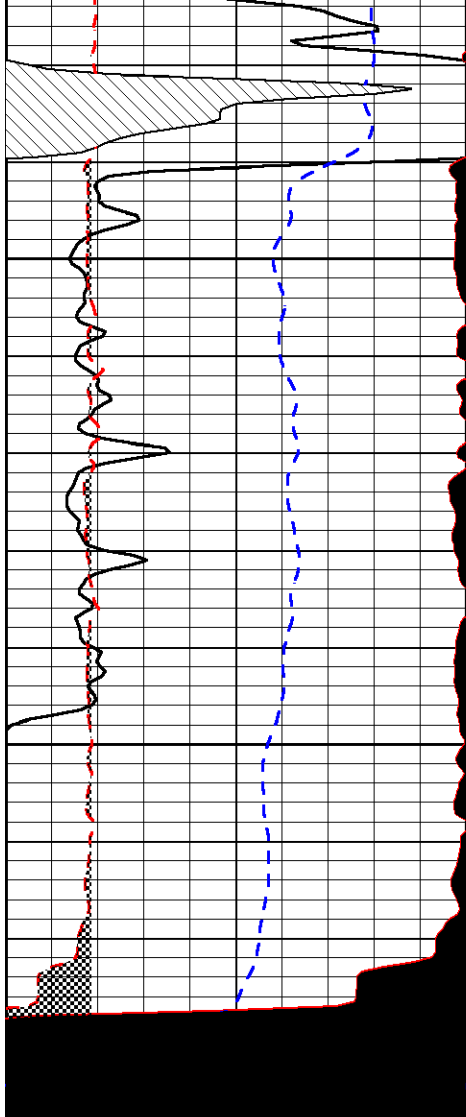


-31

-30

-31

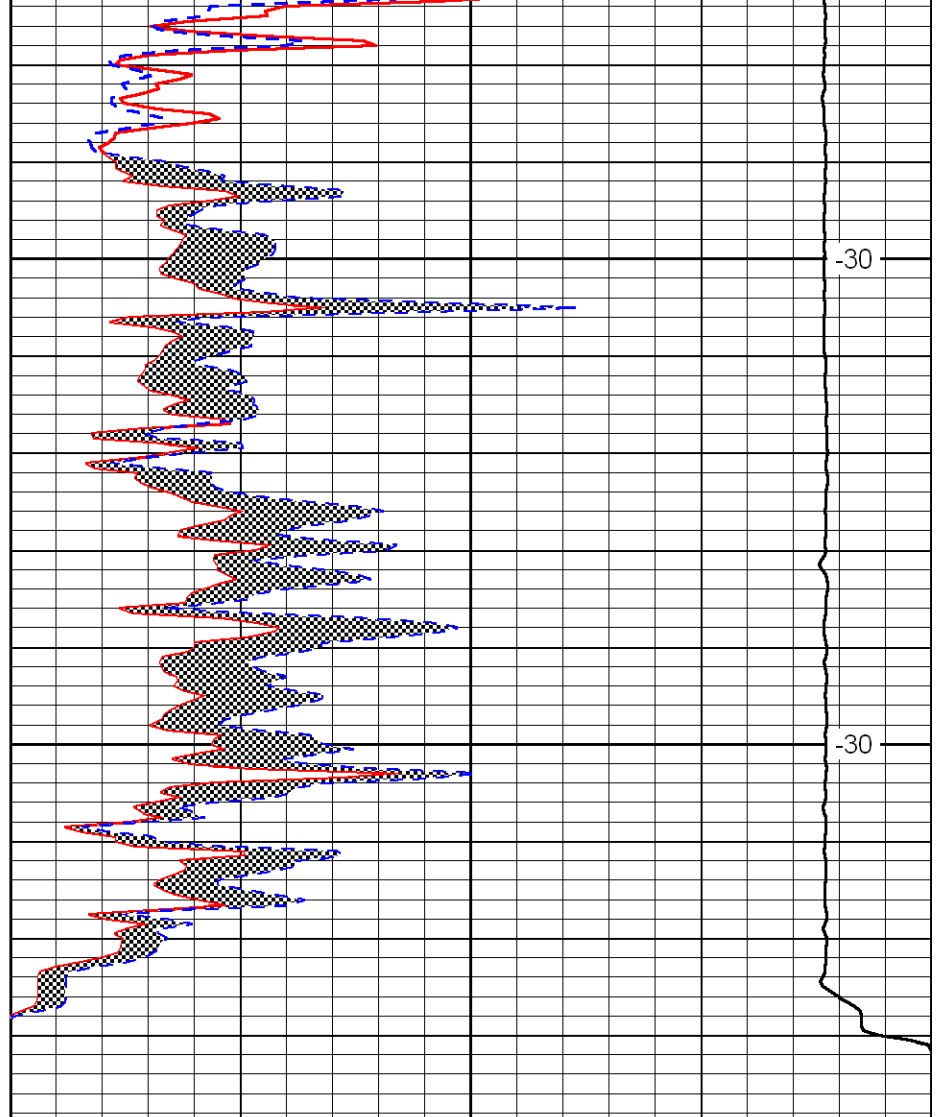
-31



3650

3700

|       |                          |       |
|-------|--------------------------|-------|
| 0     | Gamma Ray                | 150   |
| 6     | Micro Log Caliper (GAPI) | 16    |
| 2.875 | mcal (GAPI)              | 7.875 |
| -200  | SP                       | 0     |



-30

-30

|       |                     |    |
|-------|---------------------|----|
| 0     | Micro Inverse 1 X 1 | 40 |
| 0     | Micro Normal 2''    | 40 |
| 10000 | Line Weight         | 0  |

LSPD