



**SUPERIOR**  
Hays,  
Kansas

**DUAL INDUCTION  
LOG**

Company: VINCENT OIL CORPORATION  
Well: PERKINS #1-33  
Field: WILDCAT  
County: FORD  
State: KANSAS

Company: VINCENT OIL CORPORATION  
Well: PERKINS #1-33  
Field: WILDCAT  
County: FORD  
State: KANSAS

Location: 410' FNL & 700' FEL  
API #: 15-057-20635-0000  
SEC 33 TWP 28S RGE 23W  
Permanent Datum: GROUND LEVEL Elevation: 2514  
Log Measured From: KELLY BUSHING 12' A.G.L.  
Drilling Measured From: KELLY BUSHING  
Other Services: CDL/CNL/PE MEL/SONIC  
Elevation: K.B. 2526 D.F. 2524 G.L. 2514

Date	6/16/09
Run Number	ONE
Depth Driller	5370
Depth Logger	5373
Bottom Logged Interval	5371
Top Log Interval	00
Casing Driller	8 5/8" @ 568'
Casing Logger	570
Bit Size	7 7/8
Type Fluid In Hole	CHEMICAL MUD
Density / Viscosity	9.1/51
pH / Fluid Loss	10.0/11.2
Source of Sample	FLOWLINE
Rm @ Meas. Temp	1.2 @ 79F
Rmf @ Meas. Temp	.900 @ 79F
Rmc @ Meas. Temp	1.44 @ 79F
Source of Rmf / Rmc	MEASUREMENT
Rm @ BHT	.741 @ 128F
Time Circulation Stopped	6 HOURS
Time Logger on Bottom	9:15 A.M.
Maximum Recorded Temperature	128F
Equipment Number	0836
Location	HAYS, KANSAS
Recorded By	JEFF LUEBBERS
Witnessed By	KEN LEBLANC

<<< Fold Here >>>

All interpretations are opinions based on inferences from electrical or other measurements and we cannot and do not guarantee the accuracy or correctness of any interpretation, and we shall not, except in the case of gross or willful negligence on our part, be liable or responsible for any loss, costs, damages, or expenses incurred or sustained by anyone resulting from any interpretation made by any of our officers, agents or employees. These interpretations are also subject to our general terms and conditions set out in our current Price Schedule.

**Comments**

THANK YOU FOR USING SUPERIOR WELL SERVICE HAYS, KANSAS (785) 628-6395  
DIRECTIONS  
(KINGSDOWN, KS. & HWY 54) 2N. TO WILBURN RD., 4W. TO RD. #121, 1 1/2N., W. INTO



**SUPERIOR**  
Hays,  
Kansas

**MAIN SECTION**

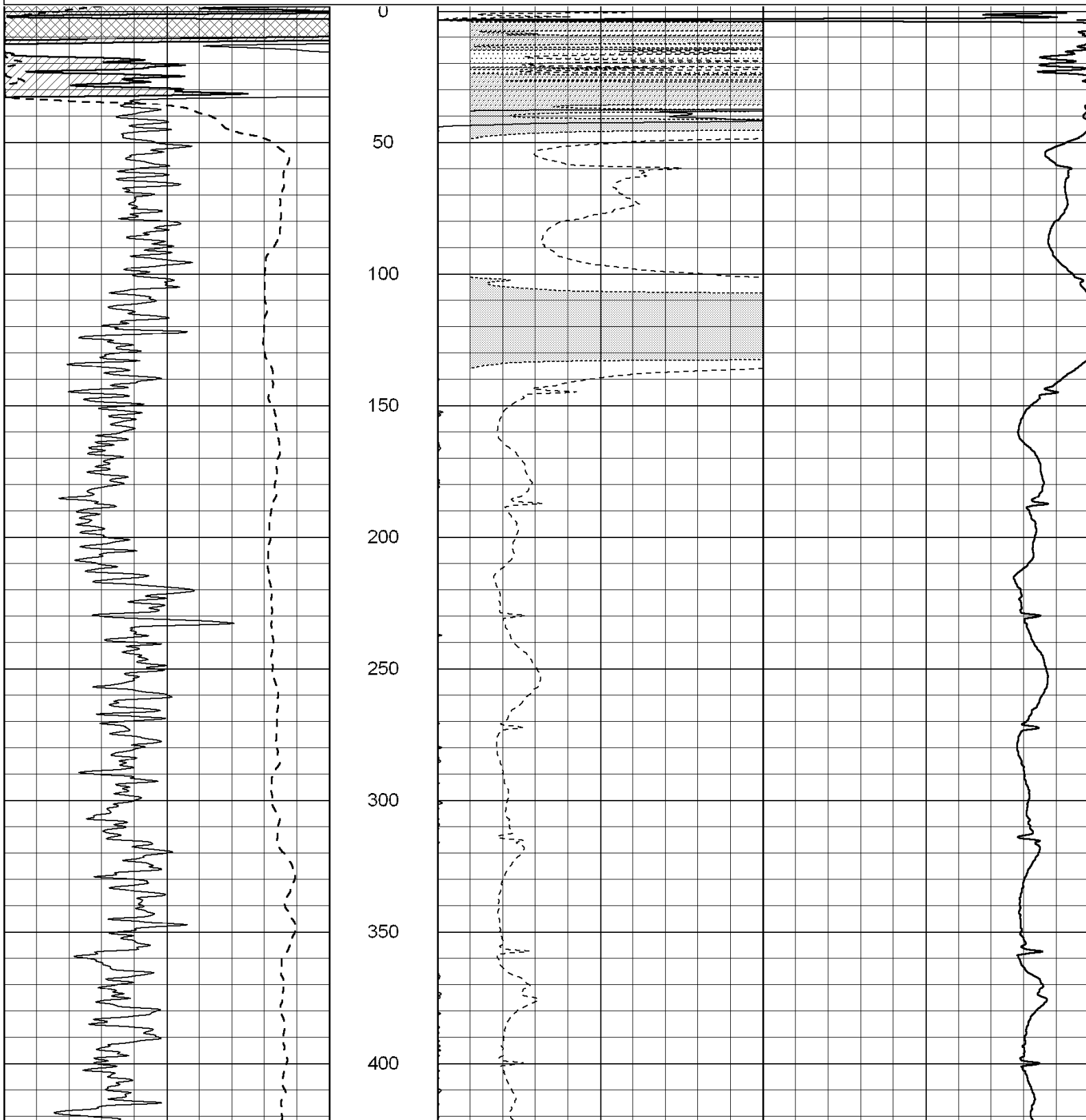
Database File: 003275pe.db  
 Dataset Pathname: pass3.4  
 Presentation Format: dil2  
 Dataset Creation: Tue Jun 16 11:02:27 2009 by Calc Open-Cased 060407  
 Charted by: Depth in Feet scaled 1:600

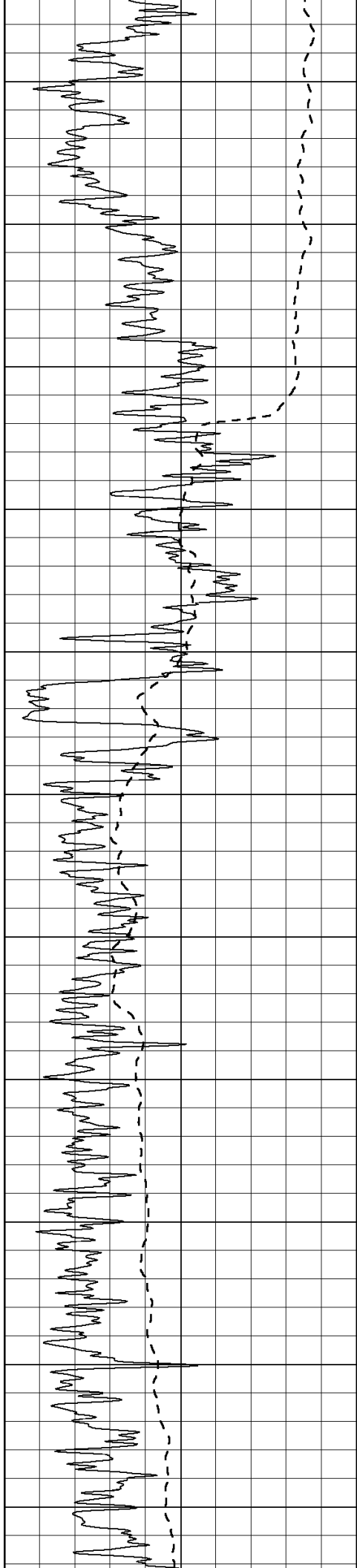
0	Gamma Ray (GAPI)	150
-100	SP (mV)	100

0	RLL3 (Ohm-m)	50
0	RILD (Ohm-m)	50

1000	CILD (mmho-m)	0
------	---------------	---

50	RILD X10 (Ohm-m)	500
50	RLL3 X10 (Ohm-m)	500





450

500

550

600

650

700

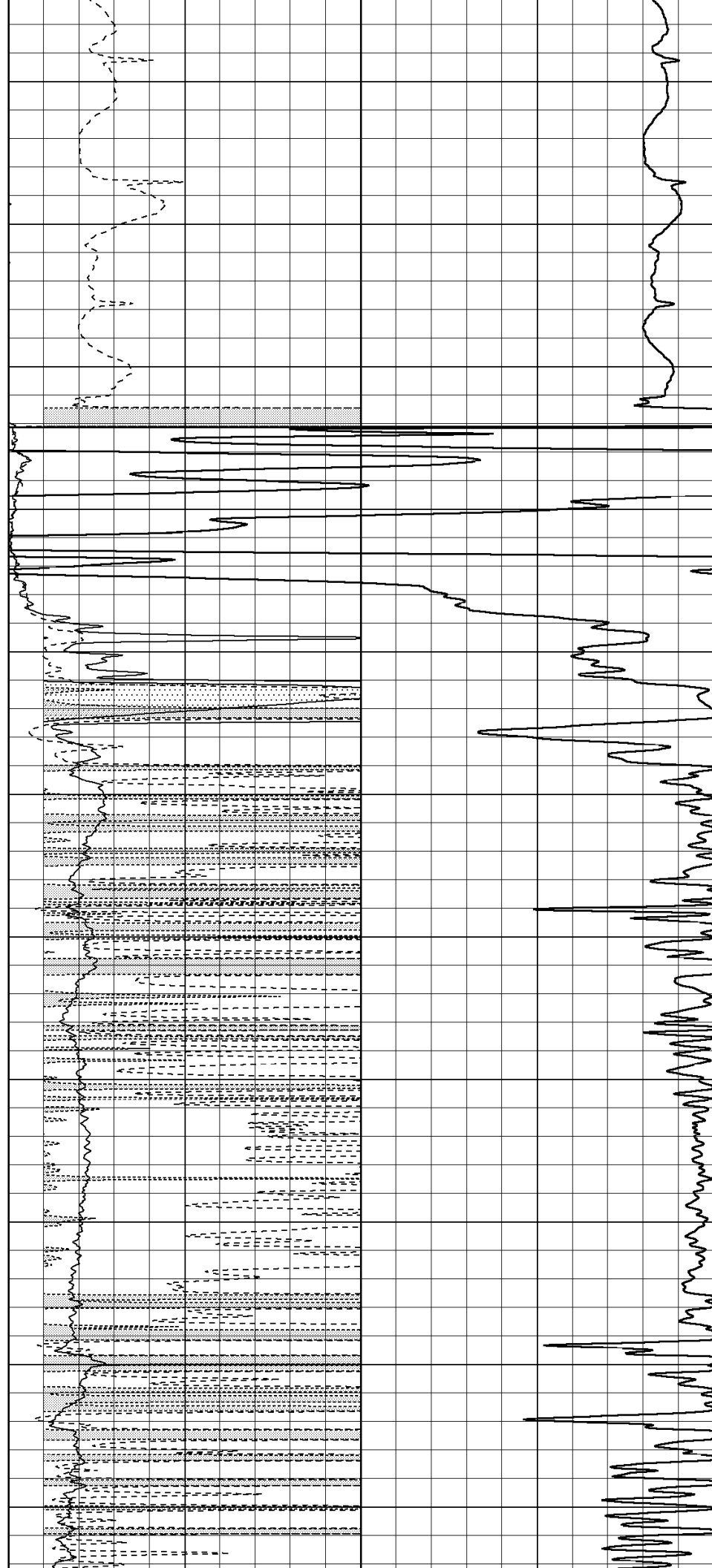
750

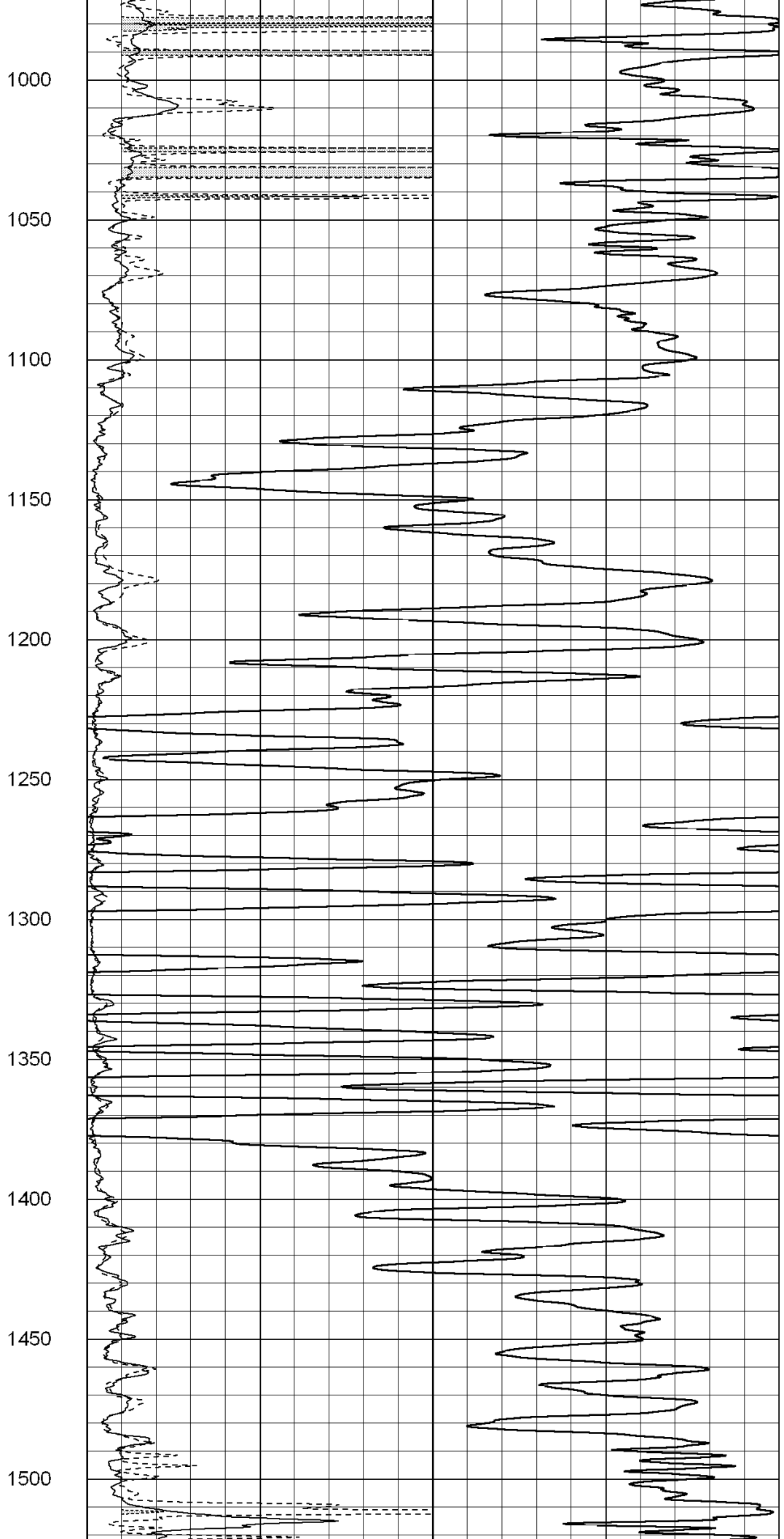
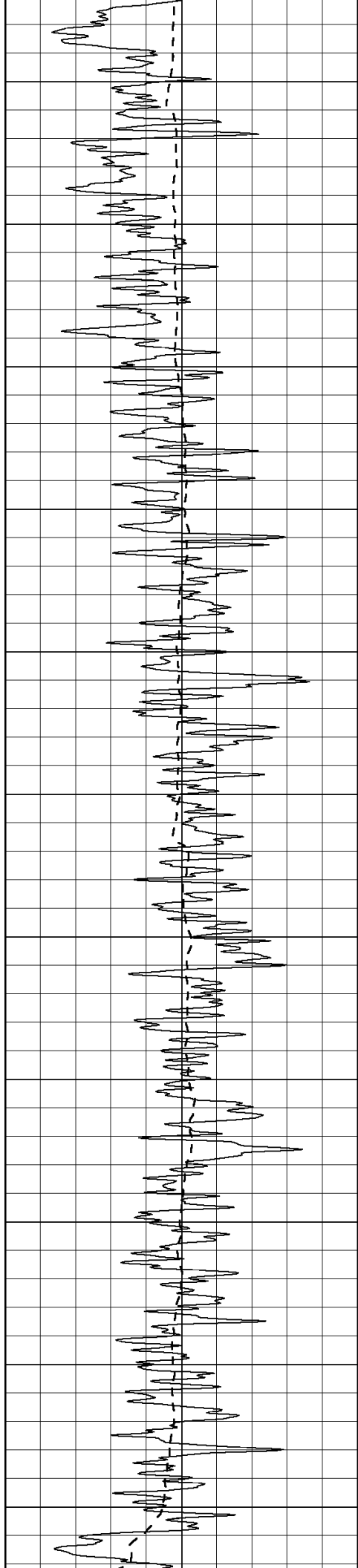
800

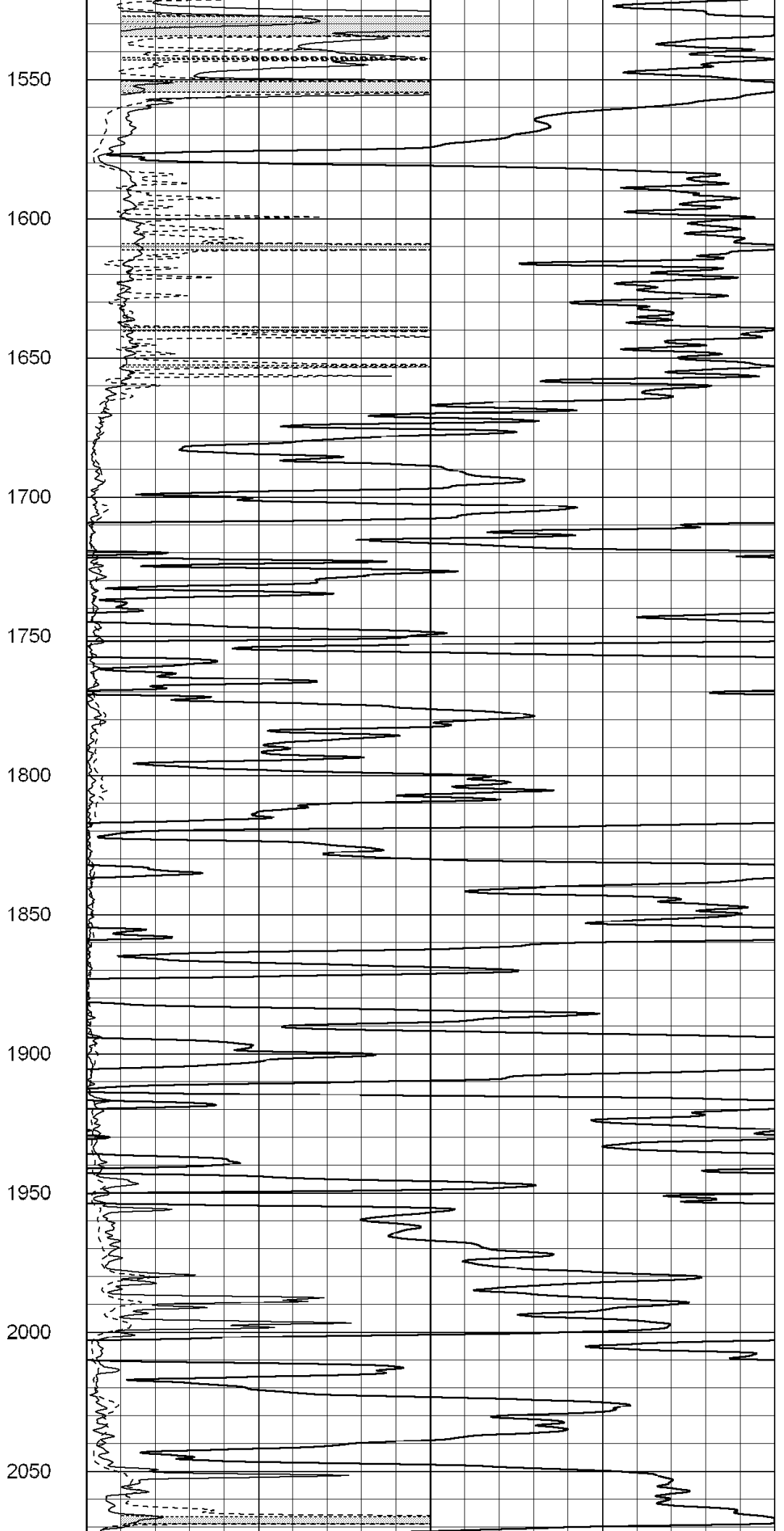
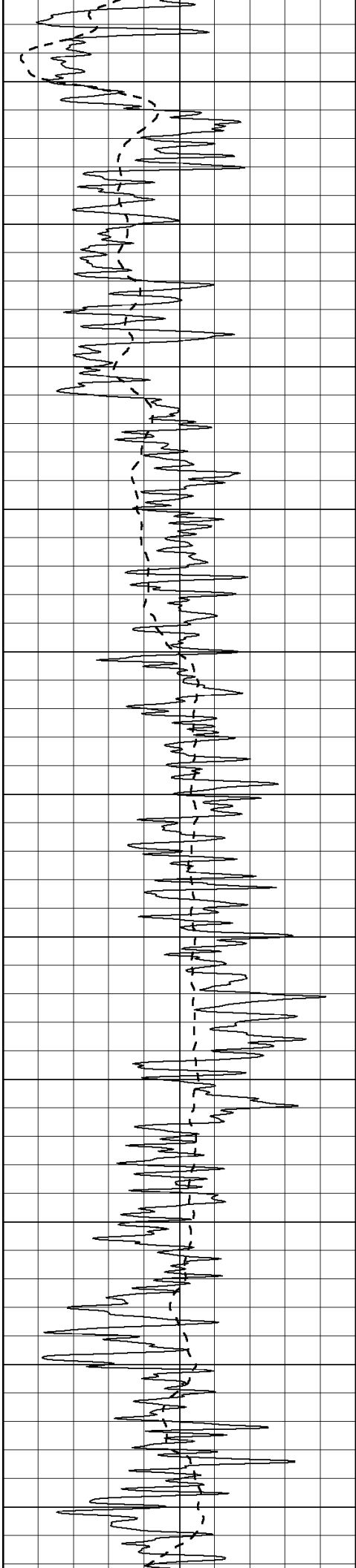
850

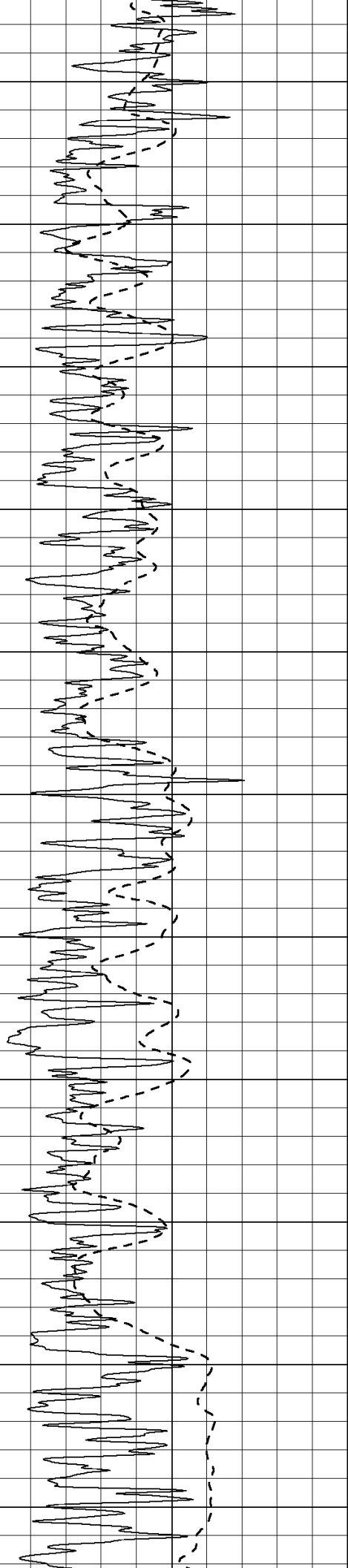
900

950









2100

2150

2200

2250

2300

2350

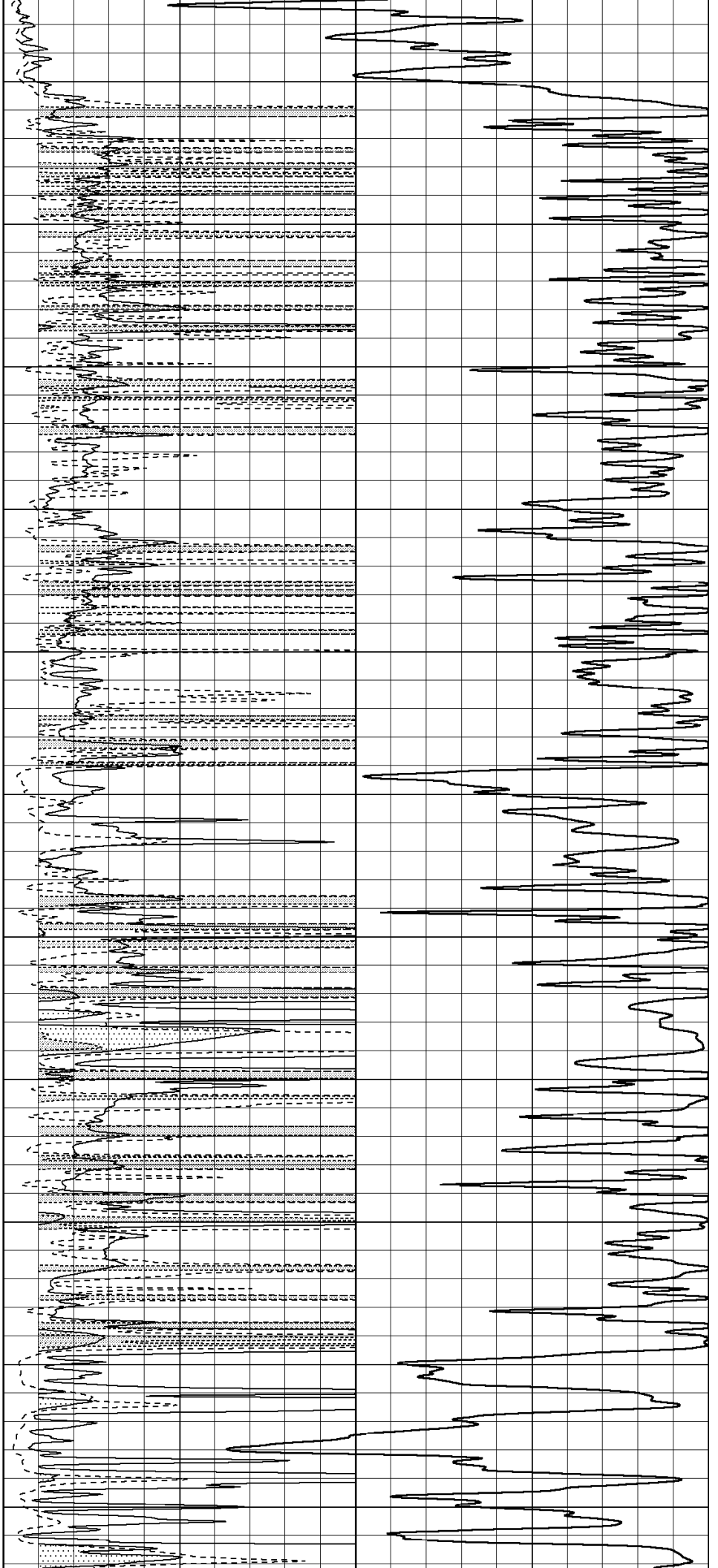
2400

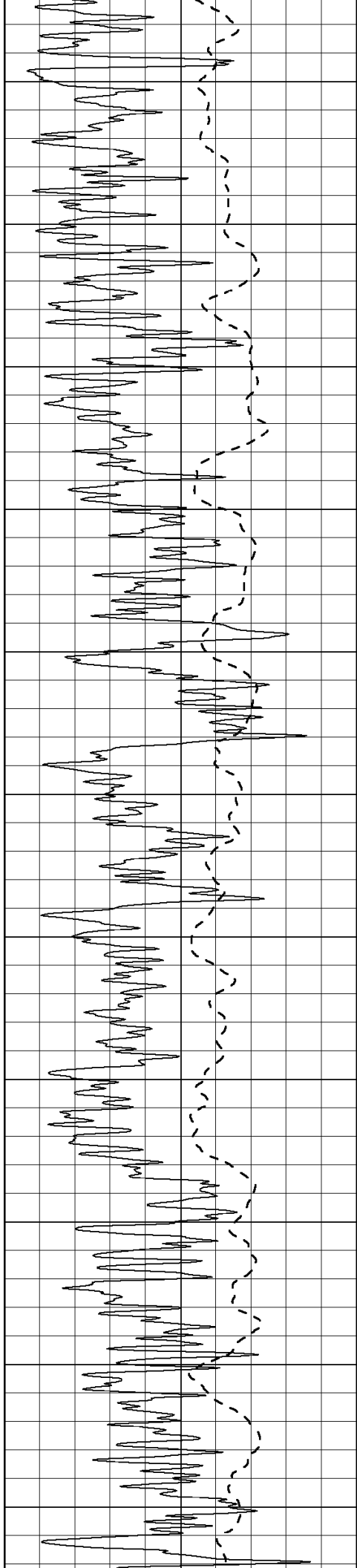
2450

2500

2550

2600





2650

2700

2750

2800

2850

2900

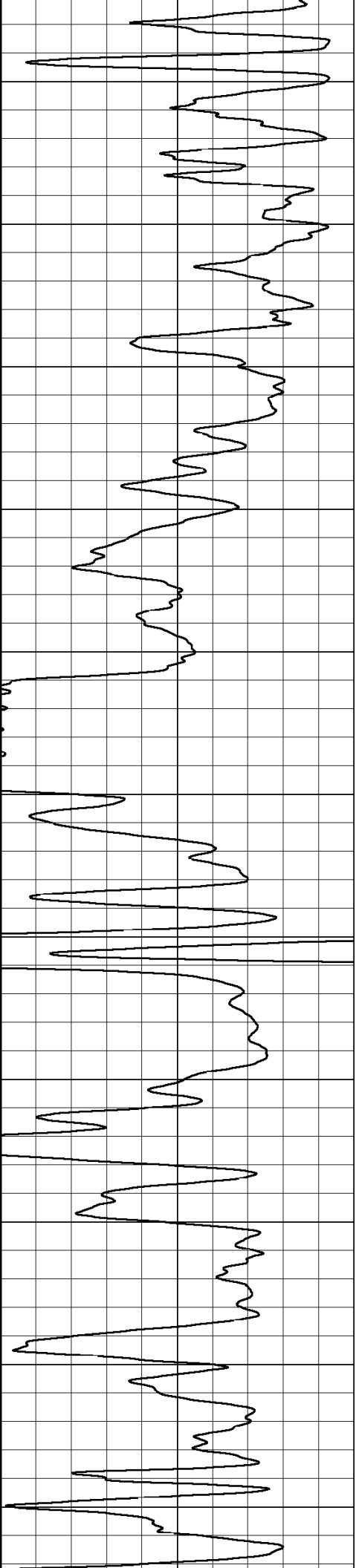
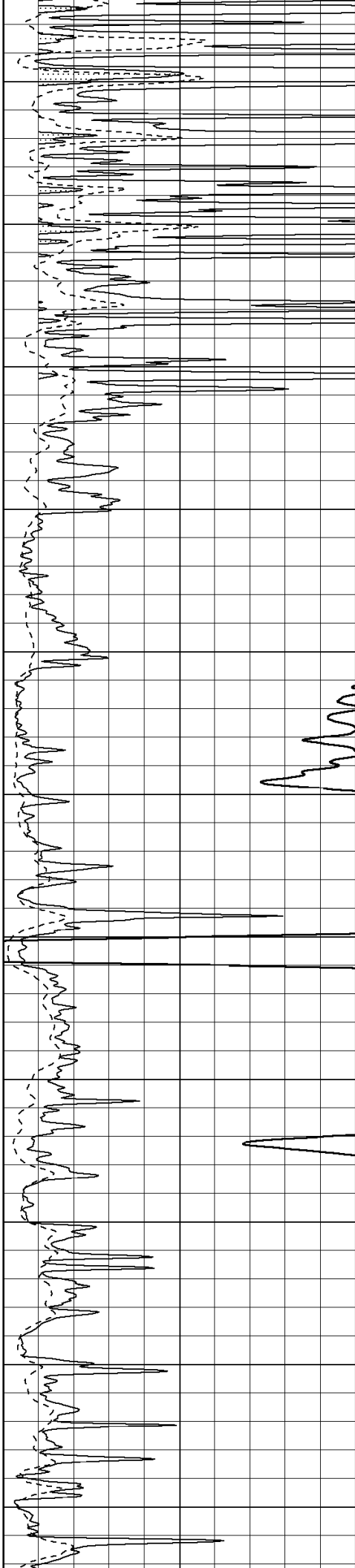
2950

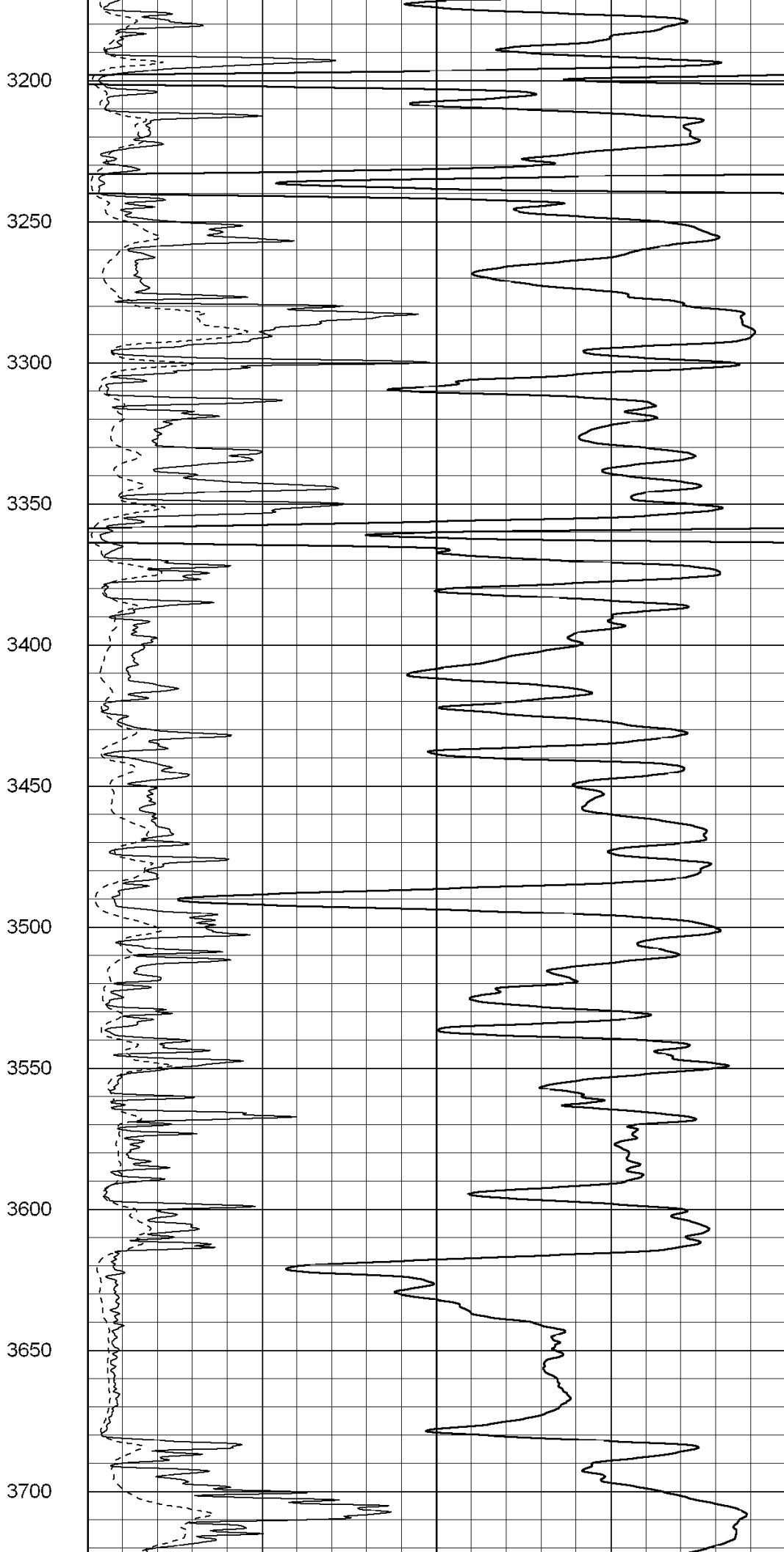
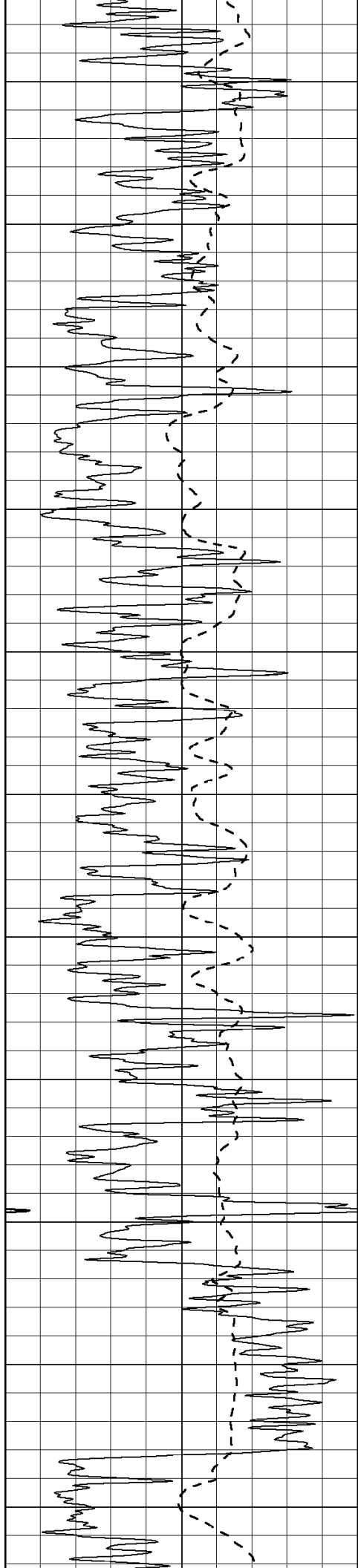
3000

3050

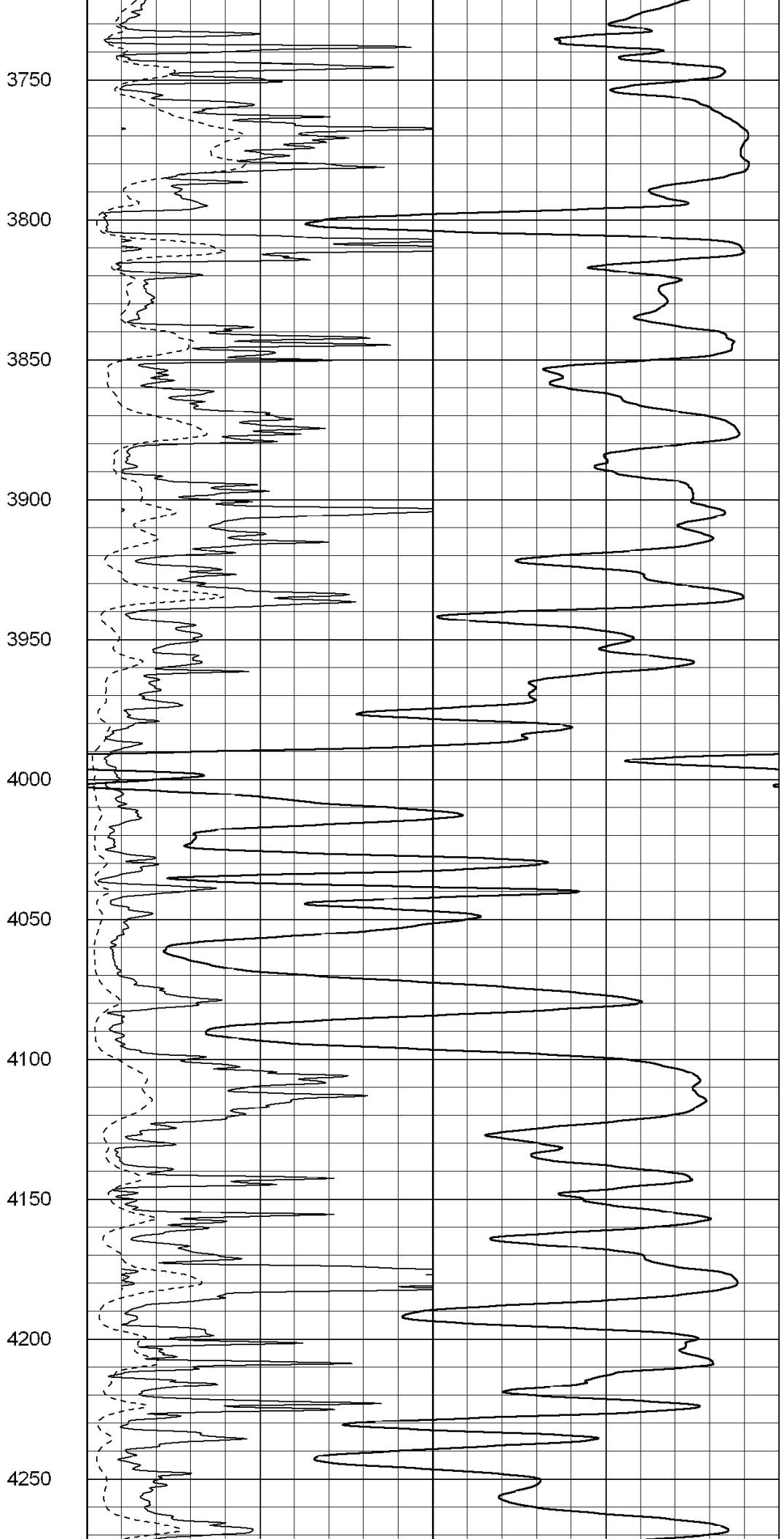
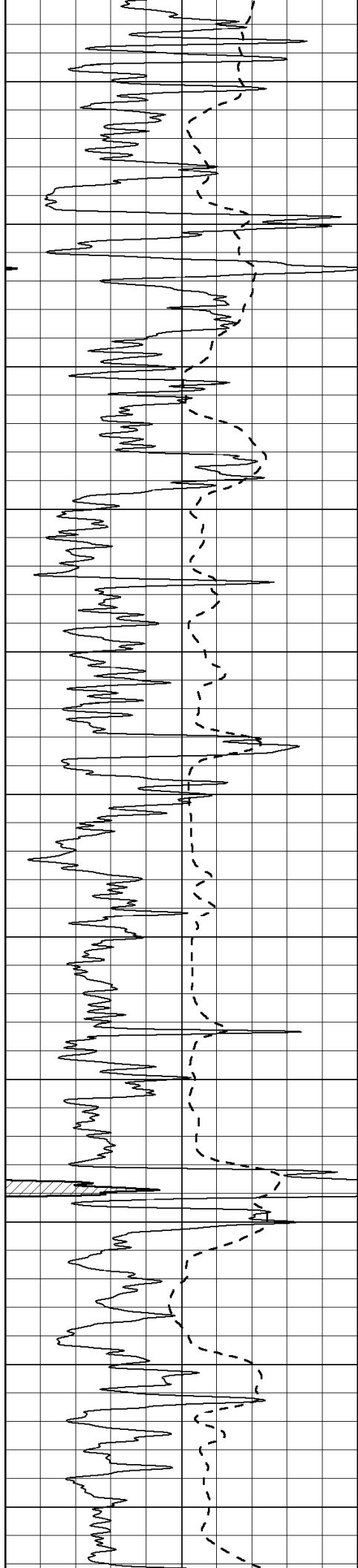
3100

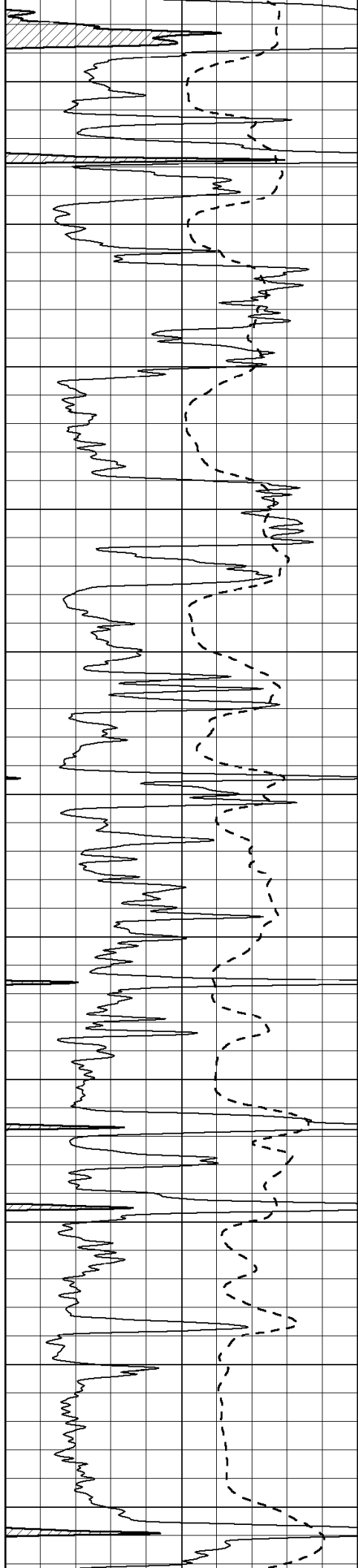
3150











4300

4350

4400

4450

4500

4550

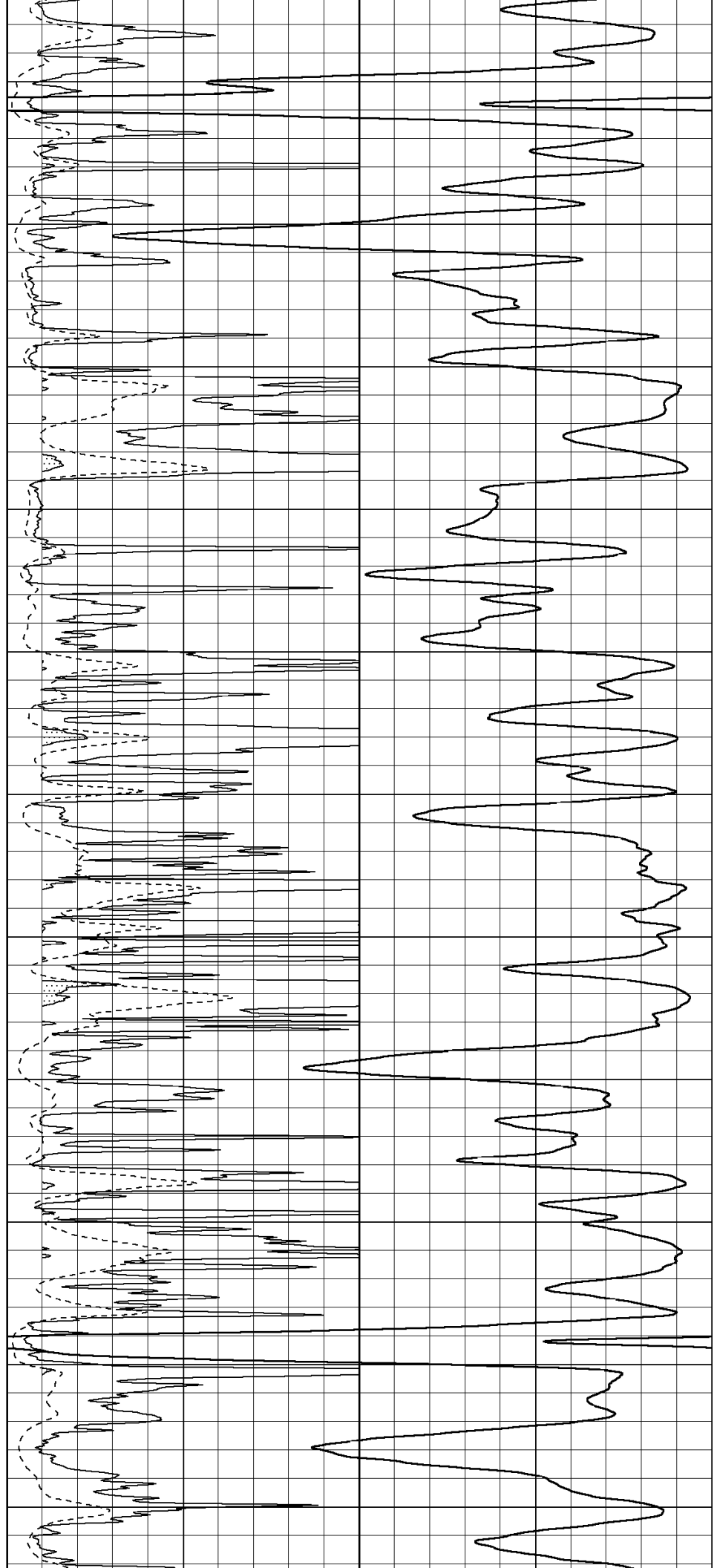
4600

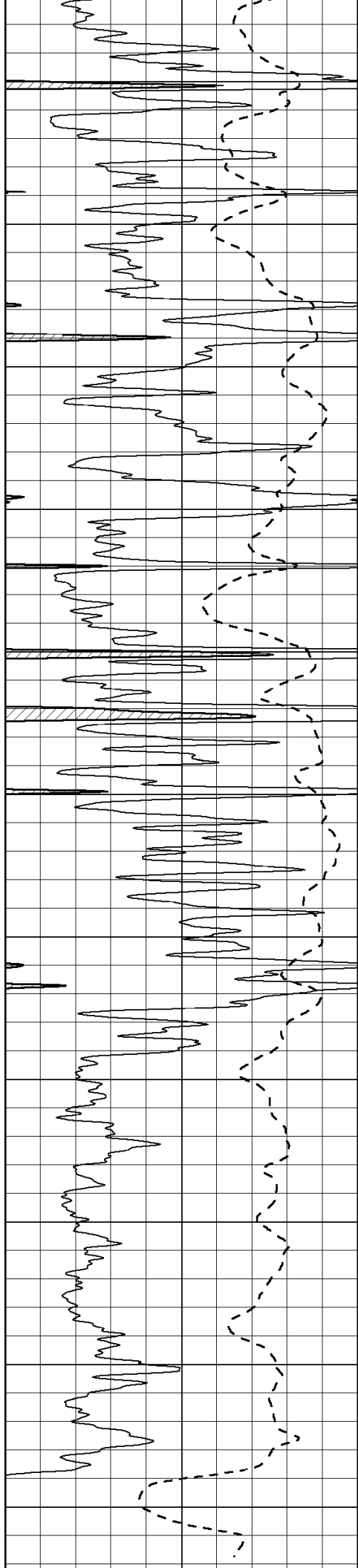
4650

4700

4750

4800





4850

4900

4950

5000

5050

5100

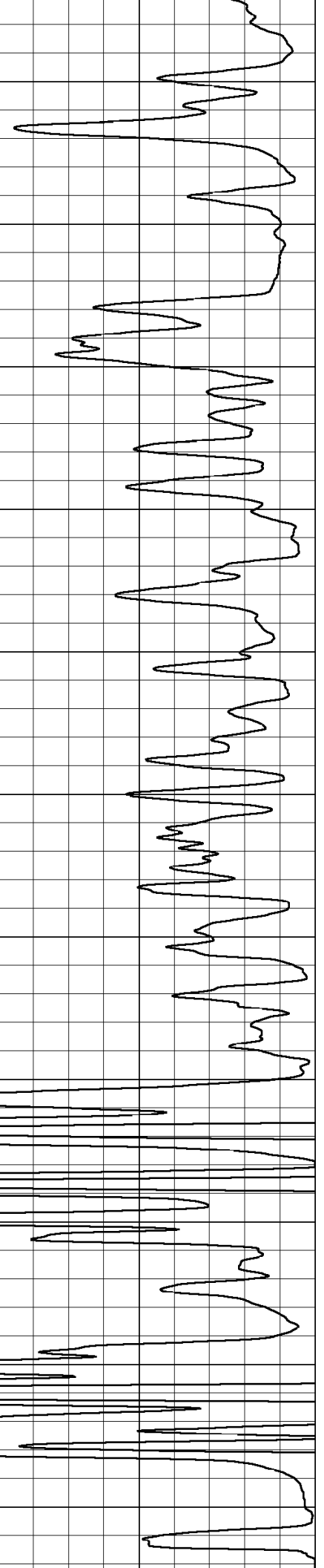
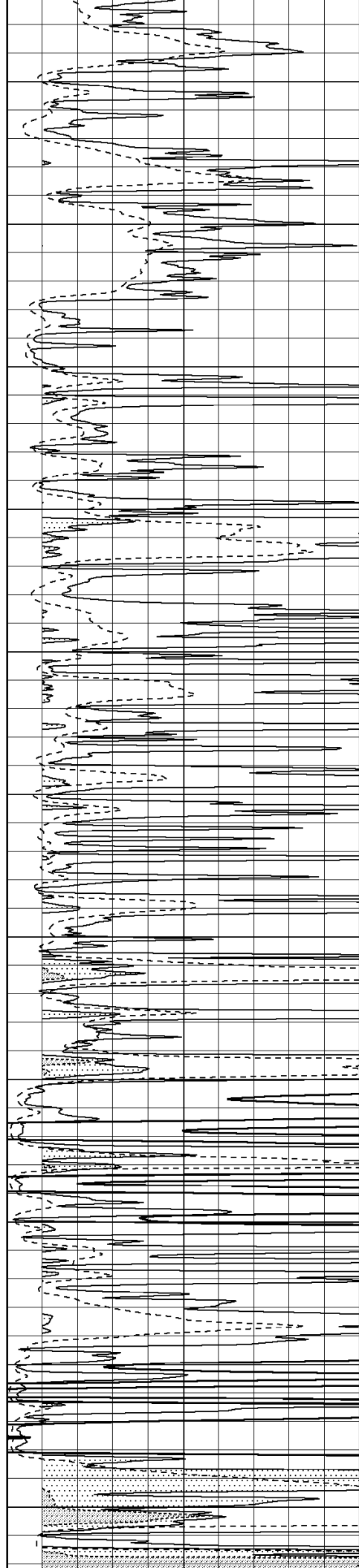
5150

5200

5250

5300

5350



0	Gamma Ray (GAPI)	150
-100	SP (mV)	100

0	RLL3 (Ohm-m)	50
0	RILD (Ohm-m)	50

1000	CILD (mmho-m)	0
------	---------------	---

50	RILD X10 (Ohm-m)	500
----	------------------	-----

50	RLL3 X10 (Ohm-m)	500
----	------------------	-----



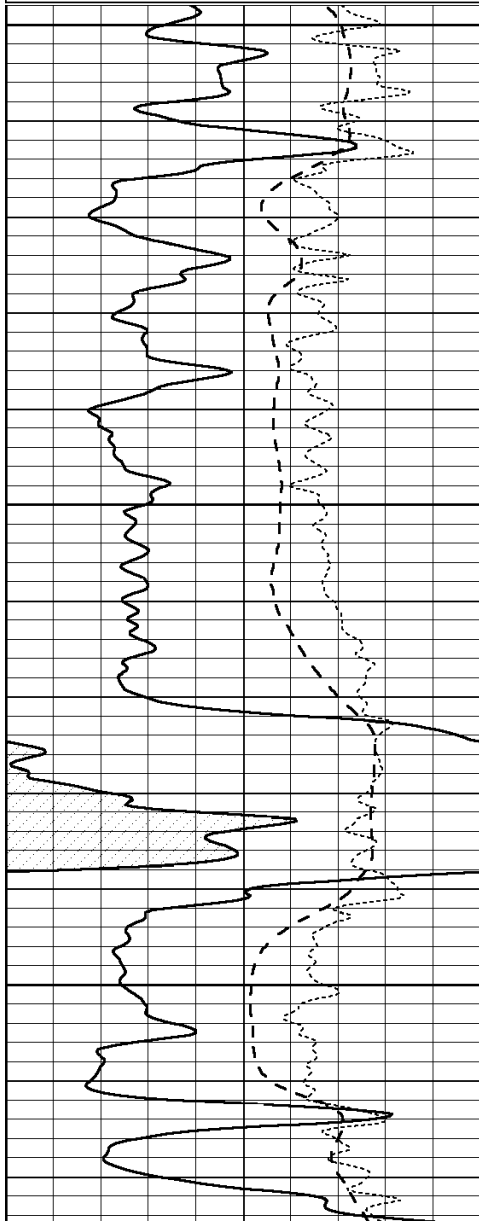
SUPERIOR  
Hays,  
Kansas

# MAIN SECTION

Database File: 003275pe.db  
 Dataset Pathname: pass3.4  
 Presentation Format: dil  
 Dataset Creation: Tue Jun 16 11:02:27 2009 by Calc Open-Cased 060407  
 Charted by: Depth in Feet scaled 1:240

0	GAMMA RAY (GAPI)	150
-100	SP (mV)	100
-250	Rxo/Rt	50

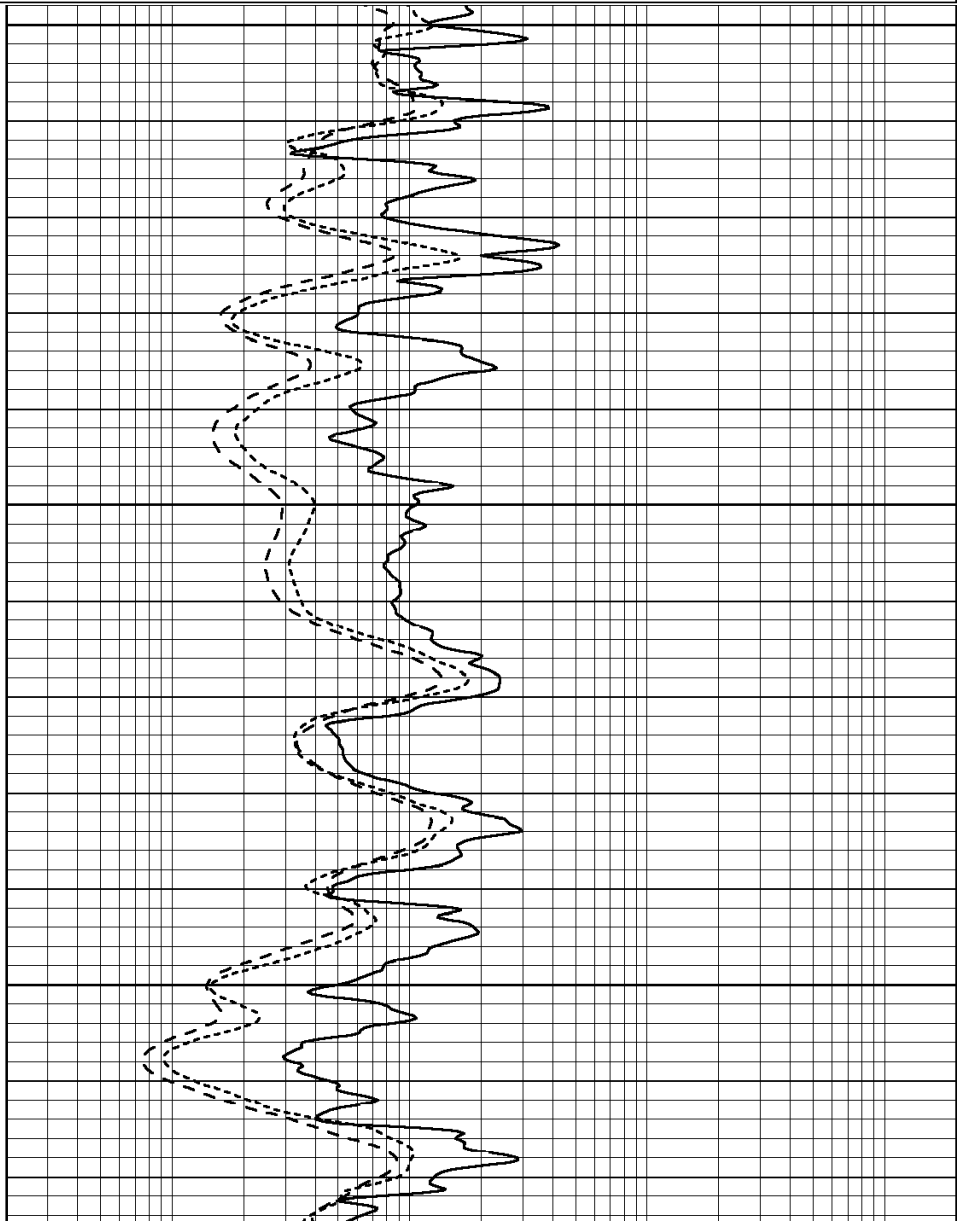
0.2	SHALLOW GUARD (Ohm-m)	2000
0.2	DEEP INDUCTION (Ohm-m)	2000
0.2	MEDIUM INDUCTION (Ohm-m)	2000

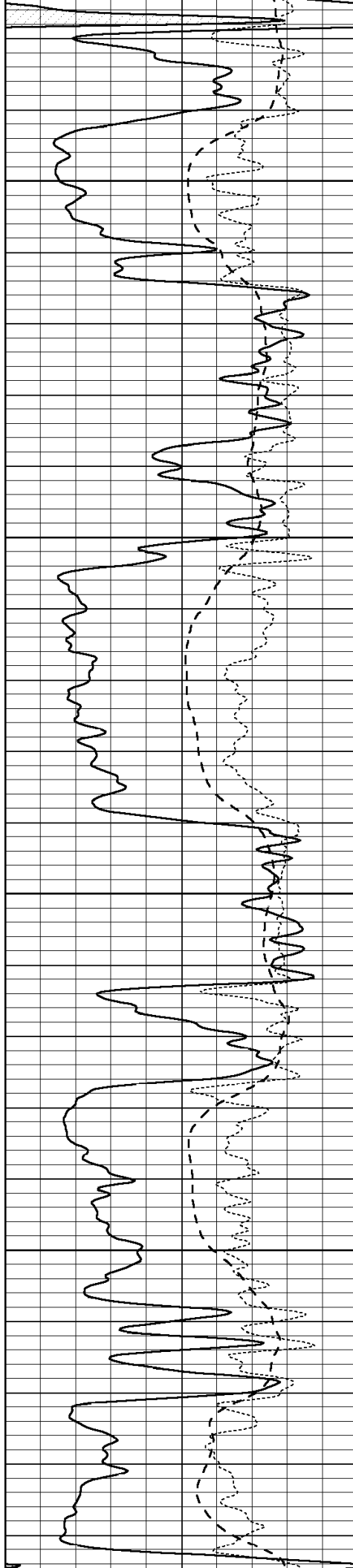


4200

4250

4300



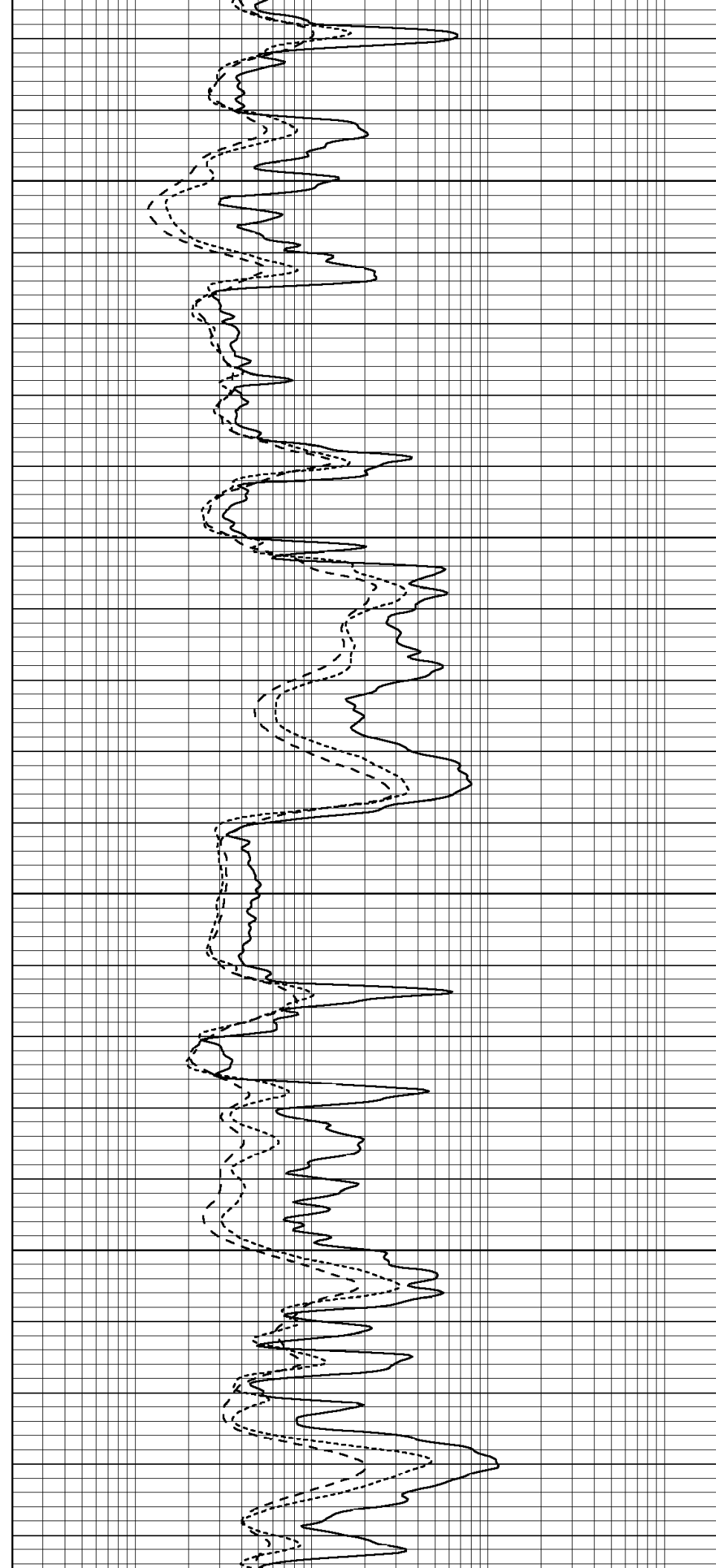


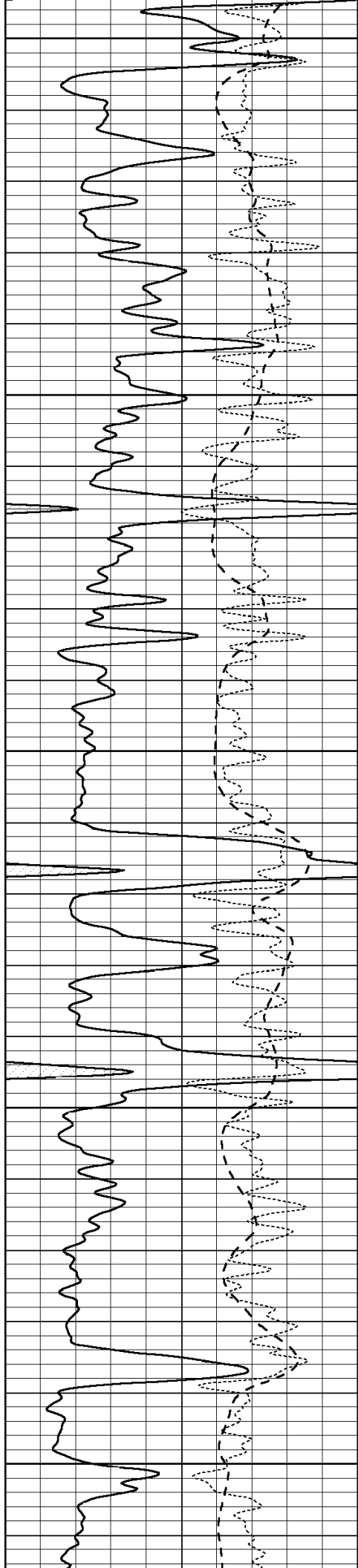
4350

4400

4450

4500





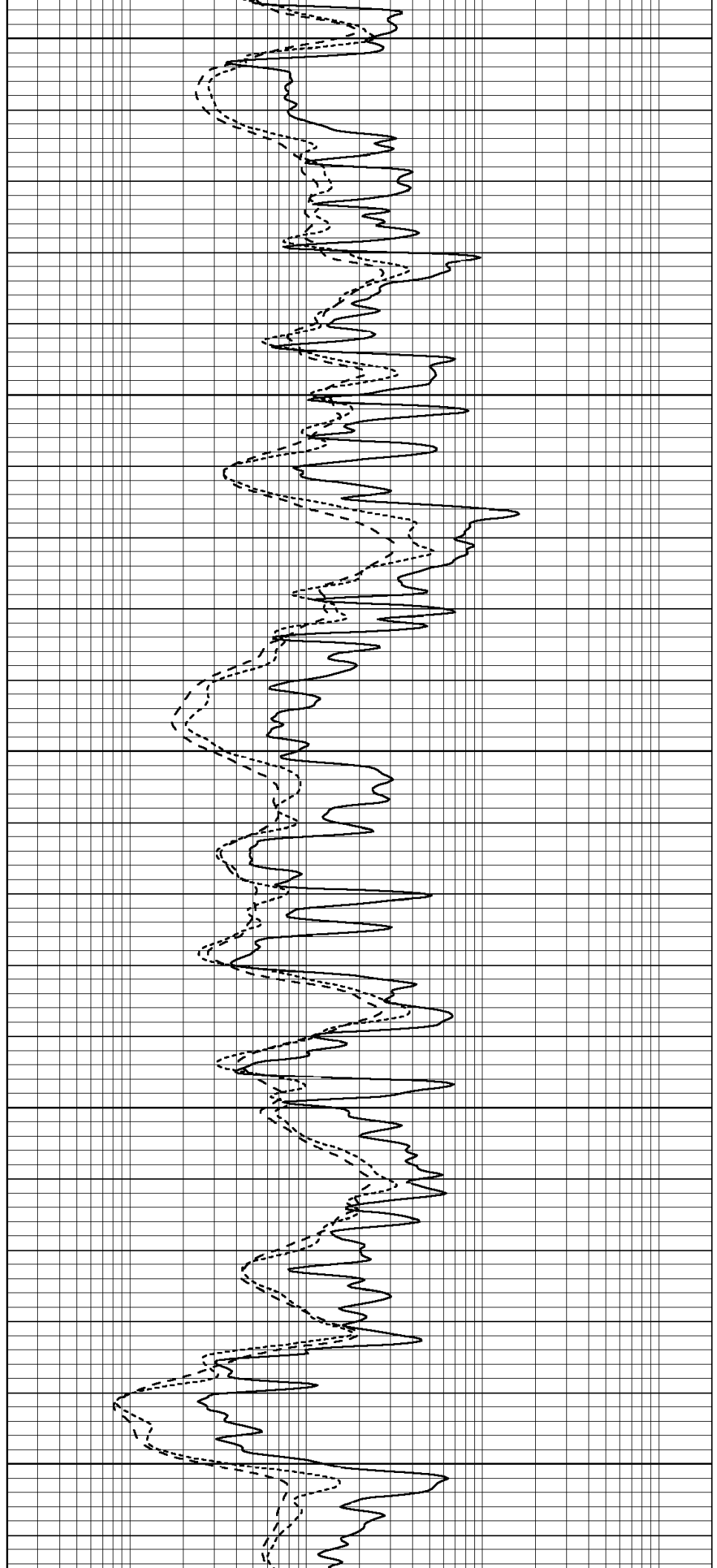
4550

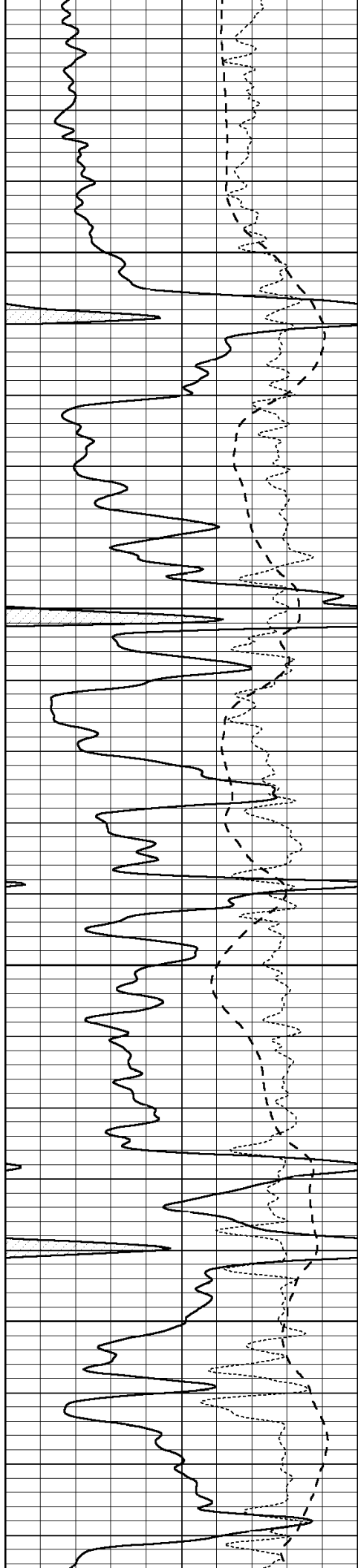
4600

4650

4700

4750



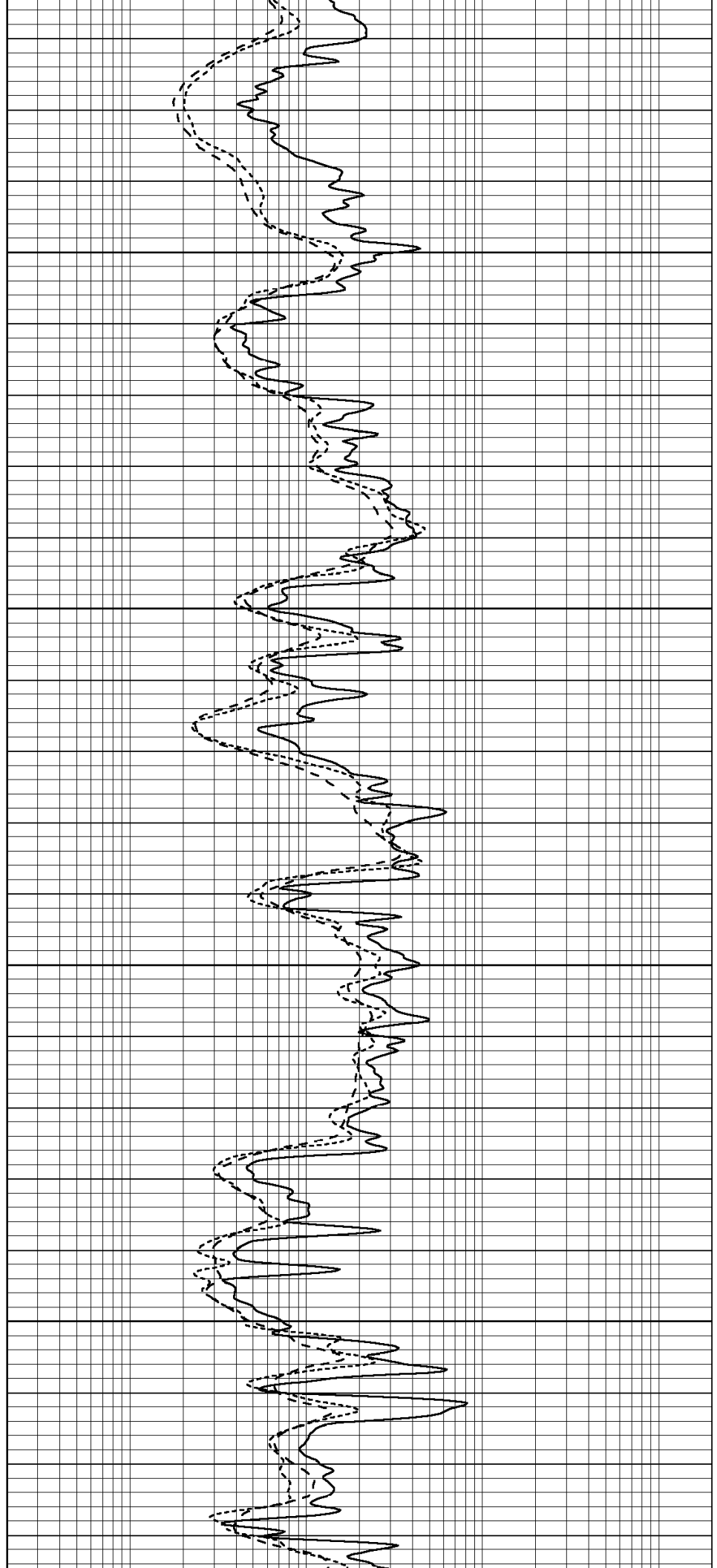


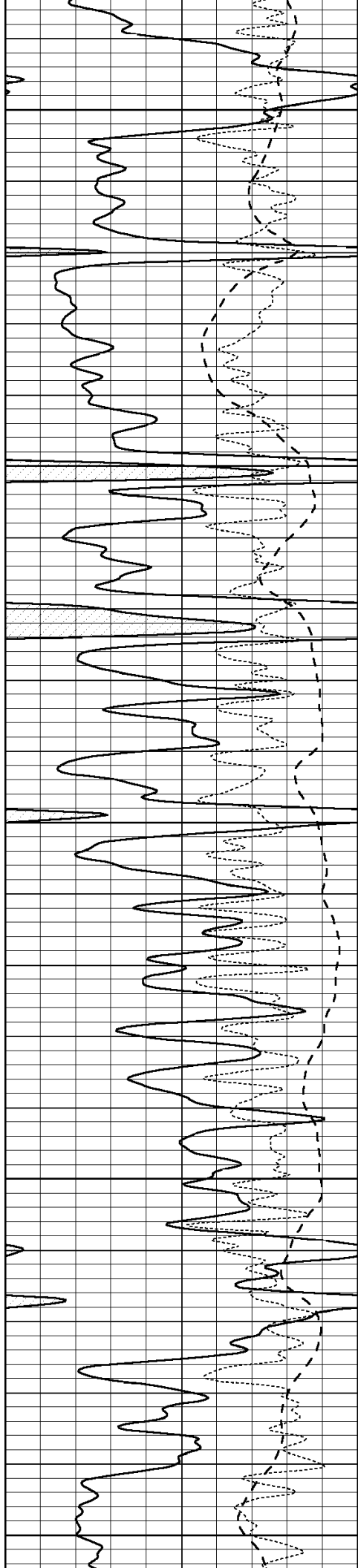
4800

4850

4900

4950





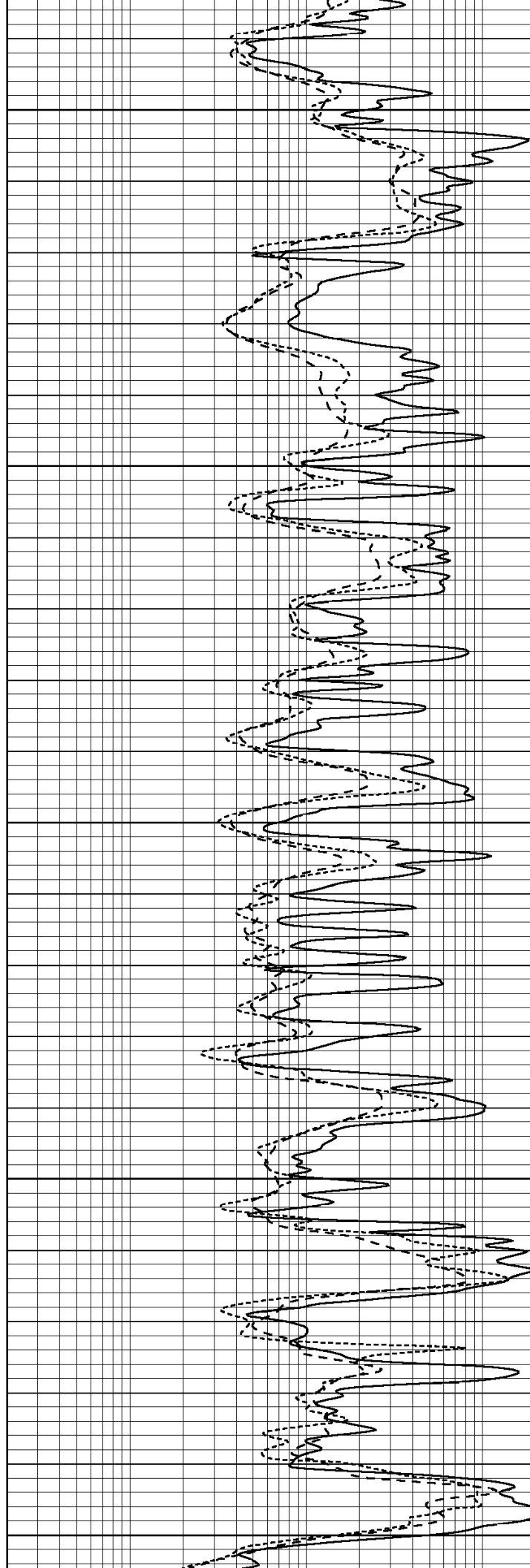
5000

5050

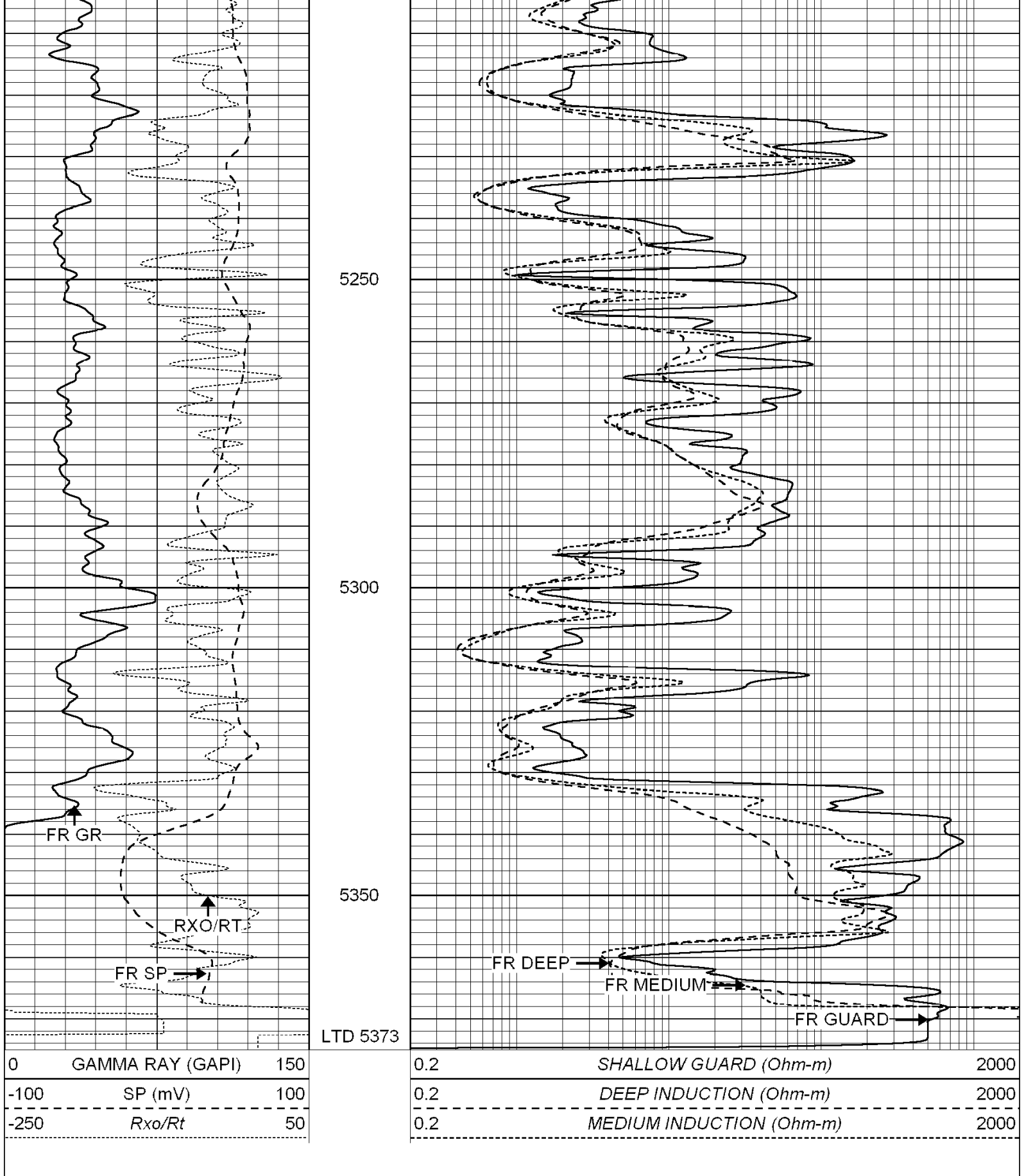
5100

5150

5200







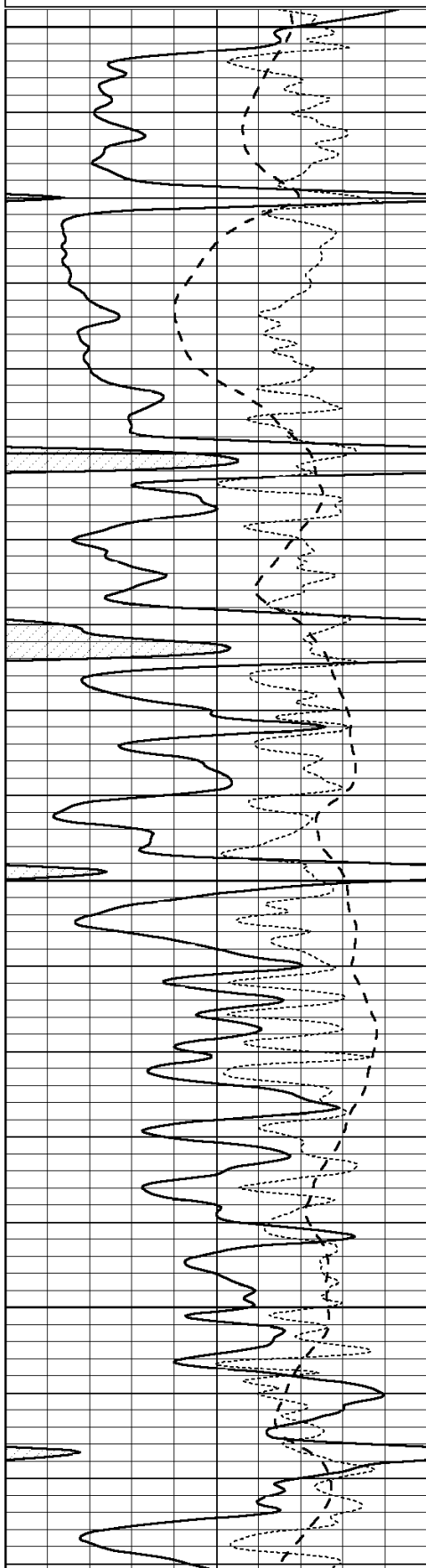
SUPERIOR  
Hays,  
Kansas

# REPEAT SECTION

Database File: 00527 Spe.dtl  
 Dataset Pathname: pass2.3  
 Presentation Format: dil  
 Dataset Creation: Tue Jun 16 09:43:00 2009 by Calc Open-Cased 060407  
 Charted by: Depth in Feet scaled 1:240

0	GAMMA RAY (GAPI)	150
-100	SP (mV)	100
-250	Rxo/Rt	50

0.2	SHALLOW GUARD (Ohm-m)	2000
0.2	DEEP INDUCTION (Ohm-m)	2000
0.2	MEDIUM INDUCTION (Ohm-m)	2000

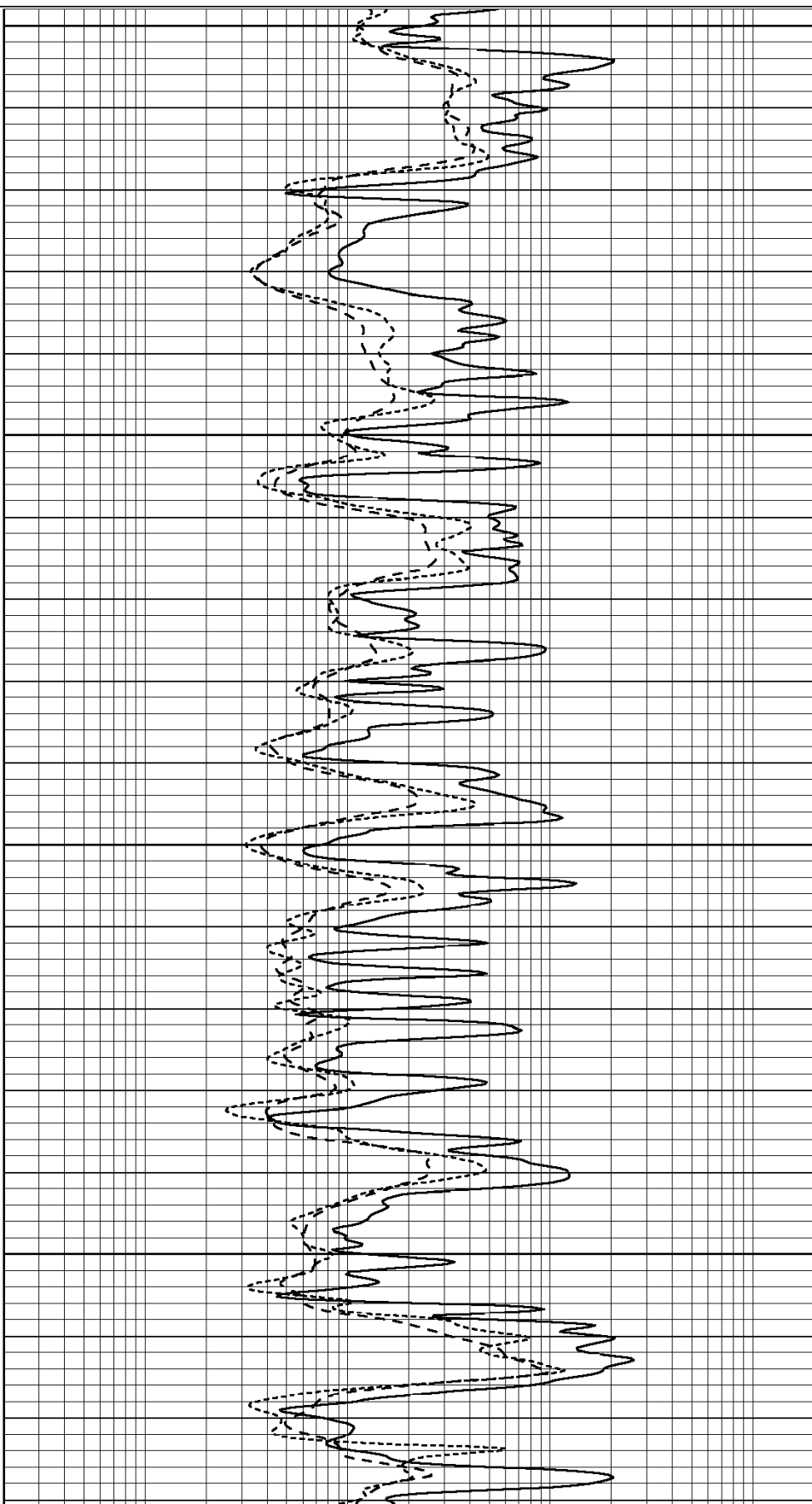


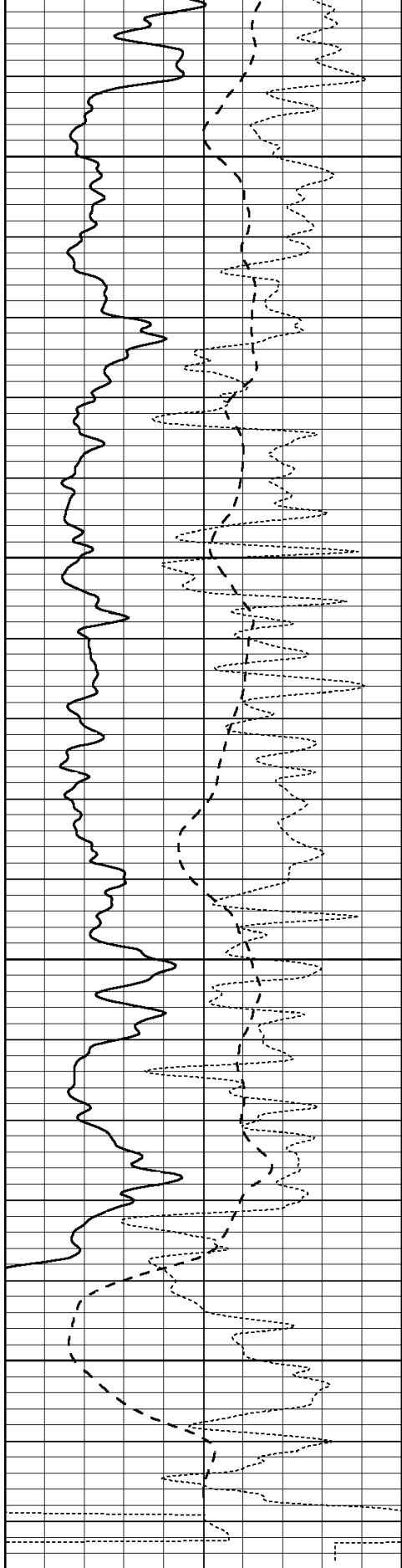
5000

5050

5100

5150





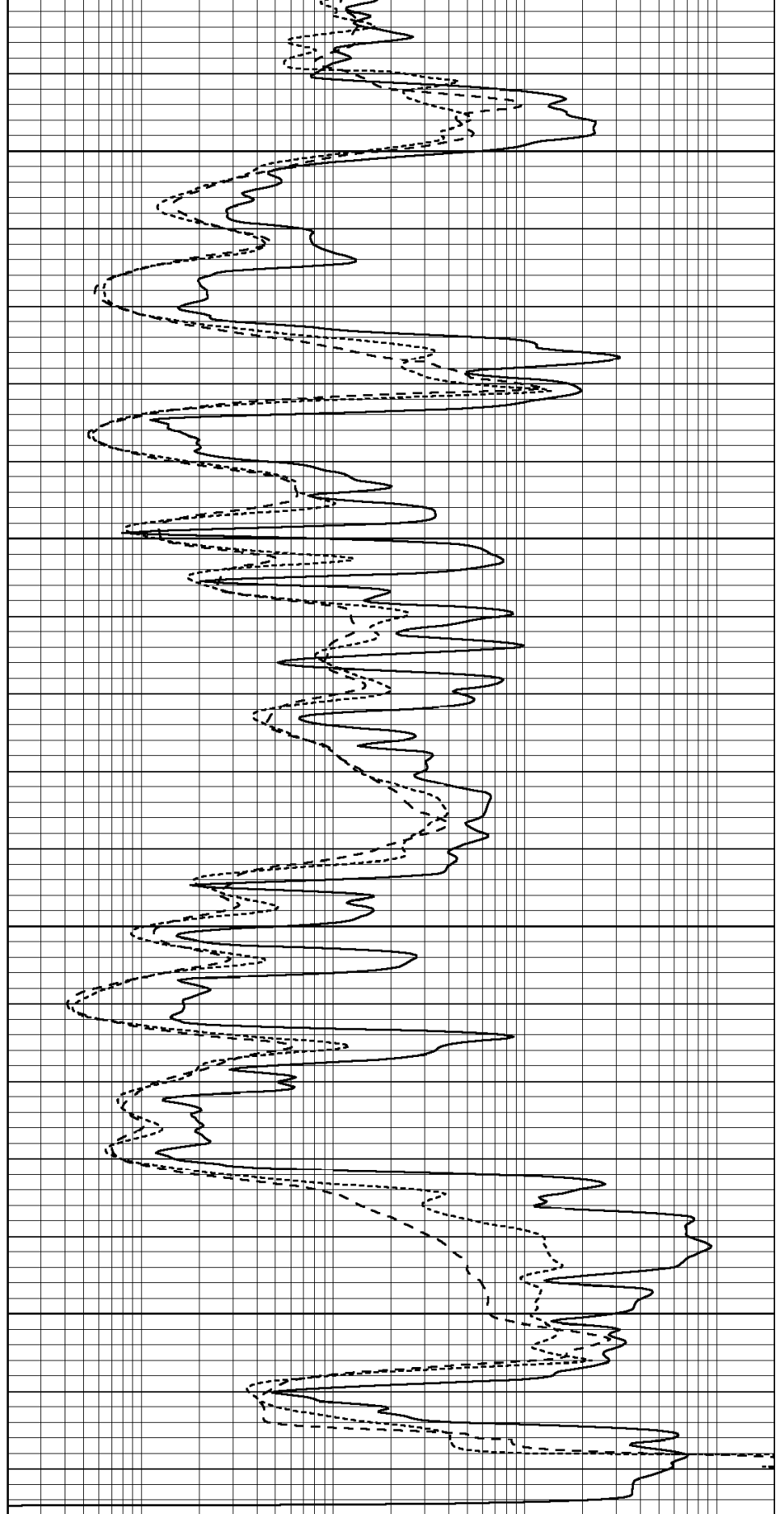
5200

5250

5300

5350

0	GAMMA RAY (GAPI)	150
-100	SP (mV)	100
-250	Rxo/Rt	50



0.2	SHALLOW GUARD (Ohm-m)	2000
0.2	DEEP INDUCTION (Ohm-m)	2000
0.2	MEDIUM INDUCTION (Ohm-m)	2000

**Calibration Report**

Database File: 003275pe.db  
 Dataset Pathname: pass3.4  
 Dataset Creation: Tue Jun 16 11:02:27 2009 by Calc Open-Cased 060407

**Dual Induction Calibration Report**

Serial-Model: DIL2-GEAR  
 Performed: Tue Jun 16 09:41:16 2009

Loop:	Readings			References			Results	
	Air	Loop		Air	Loop		m	b
Deep	0.002	0.667	V	0.000	400.000	mmho-m	650.000	6.000
Medium	-0.003	0.739	V	0.000	462.500	mmho-m	750.000	-16.000
Internal:	Zero	Cal		Zero	Cal		m	b
Deep	0.001	0.658	V	0.000	400.000	mmho-m	609.010	-0.700
Medium	0.015	0.761	V	0.000	462.500	mmho-m	620.392	-9.326

**Litho Density Calibration Report**  
 Serial: 003N Model: PRB  
 Performed Mon Jun 08 10:53:05 2009

**Litho Density Calibration**

	Background	Magnesium	Aluminum	Sandstone	
Window 1	2028.8	12047.1	4181.3	13199.9	cps
Window 2	1822.8	9337.8	3431.4	10000.3	cps
Window 3	1564.8	5811.2	2442.8	6095.5	cps
Window 4	469.1	474.6	468.9	469.9	cps
Long Space	0.0	7514.9	1608.6	8177.4	cps
Short Space	1.9	2397.2	1539.5	2522.0	cps
Rho		1.7100	2.5900	1.3800	g/cc
Pe			2.5700	1.5500	
Rib Angle	: 44.0	Rib Slope	: 0.965	Density/Spine Ratio	: 0.549
Spine Angle	: 74.0	Spine Slope	: 3.481	Spine Intercept	: -18.2

**Caliper**

	Readings	Reference	
Low Ref	2.1	6.6	
High Ref	4.4	14.0	
Gain: 3.1			Offset: 0.1

**Compensated Neutron Calibration Report**

Serial Number: NEU\_3I  
 Tool Model: G

**CALIBRATION**

Detector	Readings	Target	Normalization
Short Space	997.00 cps	1000.00 cps	1.0000
Long Space	986.00 cps	1000.00 cps	1.0000

**Gamma Ray Calibration Report**

Serial Number: GR3  
 Tool Model: OPEN  
 Performed: Tue Jun 16 09:40:44 2009

Calibrator Value: 200.0      GAPI

Calibrator value:	200.0	GAPI
Background Reading:	3.0	cps
Calibrator Reading:	186.0	cps
Sensitivity:	0.4500	GAPI/cps