



Microresistivity Log

DIGITAL LOG (785) 625-3858

API No. 15-109-20,839-00-00	Company Murfin Drilling Company, Inc.	Other Services CNL/CDL DIL/BHCS
	Well KWS No. 2 - 32	
	Field Unknown	
	County Logan	State Kansas
	Location 1780' FNL & 1140' FWL	
	Sec: 32	Twp: 12 S Rge: 32 W
Permanent Datum Log Measured From Drilling Measured From	Ground Level Kelly Bushing Frotkelly Bushing	Elevation 3070 10 Ft. Above Perm. Datum K.B. 3080 D.F. 3070 G.L. 3070

Date	5/16/2009
Run Number	Two
Depth Driller	4730
Depth Logger	4729
Bottom Logged Interval	4728
Top Log Interval	3700
Casing Driller	8.625 @ 216
Casing Logger	213
Bit Size	7.875
Type Fluid in Hole	Chemical
Salinity, ppm CL	7.900
Density / Viscosity	9.2 62
pH / Fluid Loss	11.5 6.8
Source of Sample	Flowline
Rm @ Meas. Temp	0.98 @ 75
Rmf @ Meas. Temp	0.74 @ 75
Rmc @ Meas. Temp	1.32 @ 75
Source of Rmf / Rmc	Charts
Rm @ BHT	0.60 @ 123
Operating Rig Time	5 Hours
Max Rec. Temp. F	123
Equipment Number	15
Location	Havs
Recorded By	B. Becker
Witnessed By	Jeff Christian

<<< Fold Here >>>

All interpretations are opinions based on inferences from electrical or other measurements and we cannot and do not guarantee the accuracy or correctness of any interpretation, and we shall not, except in the case of gross or willful negligence on our part, be liable or responsible for any loss, costs, damages, or expenses incurred or sustained by anyone resulting from any interpretation made by any of our officers, agents or employees. These interpretations are also subject to our general terms and conditions set out in our current Price Schedule.

Comments

Thank you for using Log-Tech, Inc.
(785) 625-3858

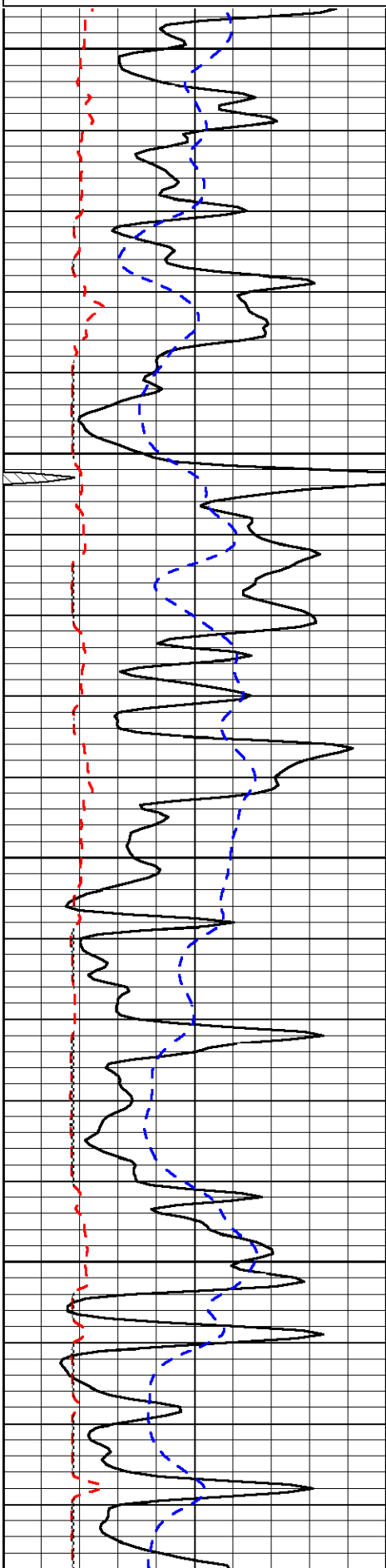
Oakley, Ks; 11 South; 3 West; 1/2 North; East into

Database File: c:\warrior\data\murfin_kws no. 2 - 32\murfinhd.db
 Dataset Pathname: DIL/murfstk
 Presentation Format: micro
 Dataset Creation: Sat May 16 10:25:39 2009
 Charted by: Depth in Feet scaled 1:240

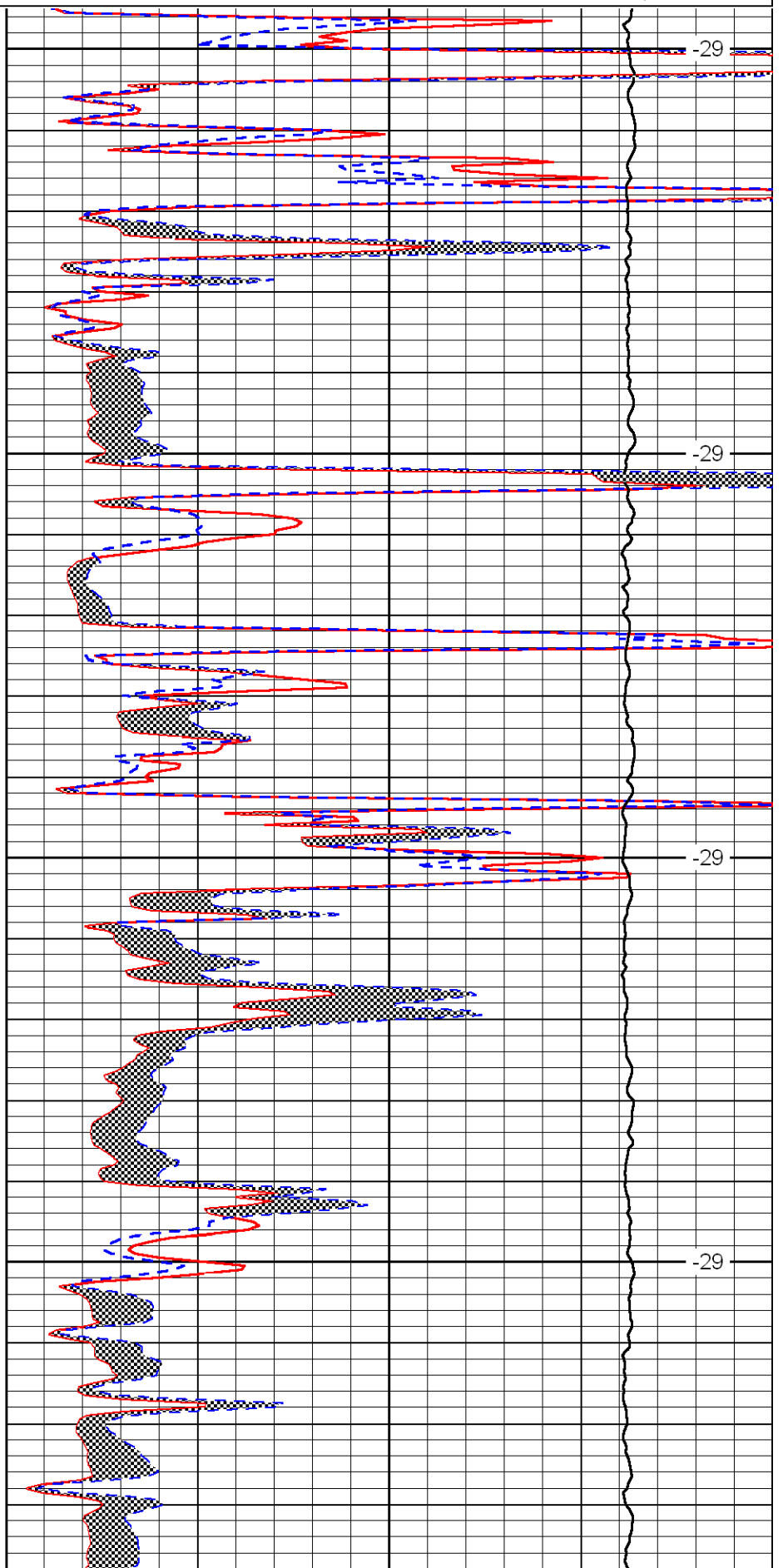
0	Gamma Ray	150
6	Micro Log Caliper (in)	16
-200	SP (MV)	0

0	Micro Inverse 1 X 1 (Ohm-m)	40
0	Micro Normal 2" (Ohm-m)	40
10000	Line Weight (lb)	0

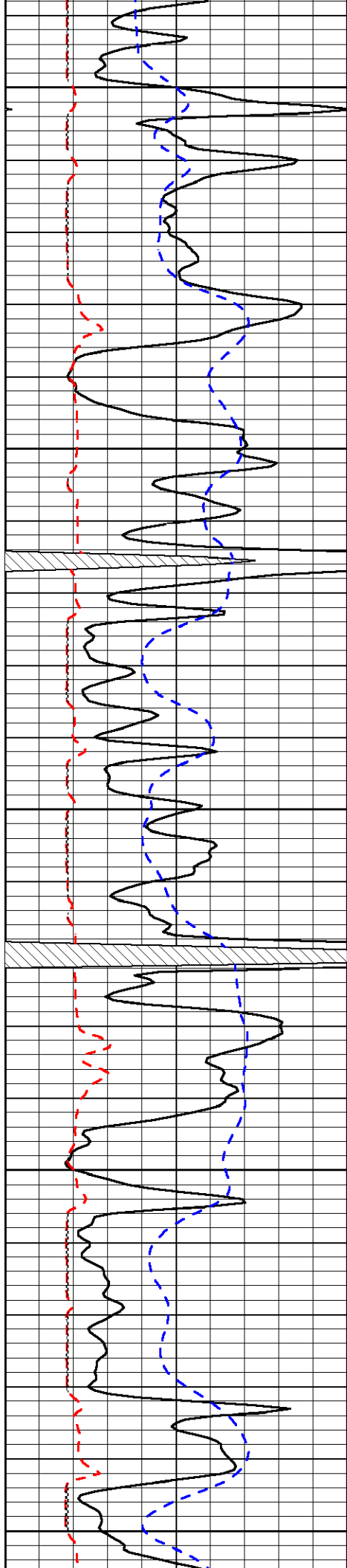
LSPD
(ft/min)



3700
3750
3800
3850



-29
-29
-29
-29



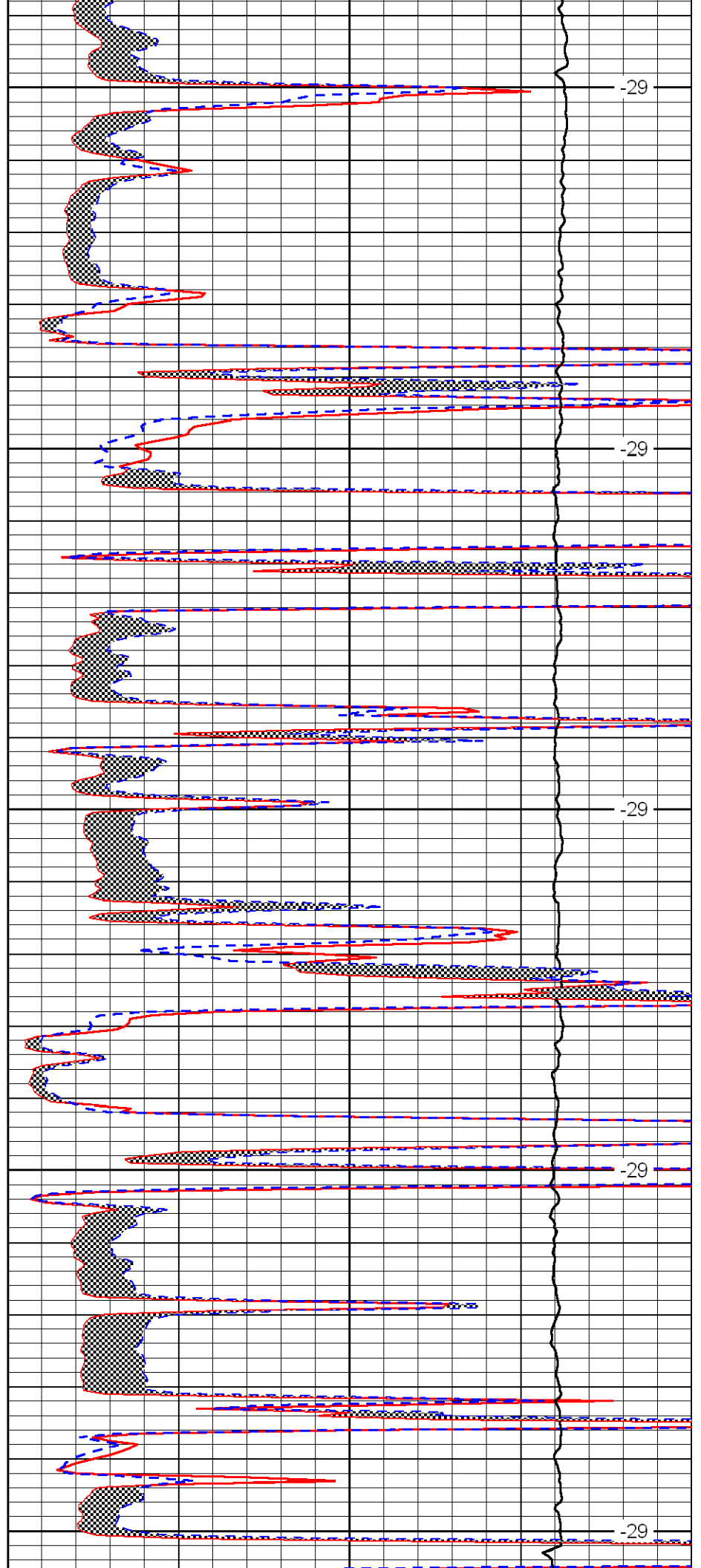
3900

3950

4000

4050

4100



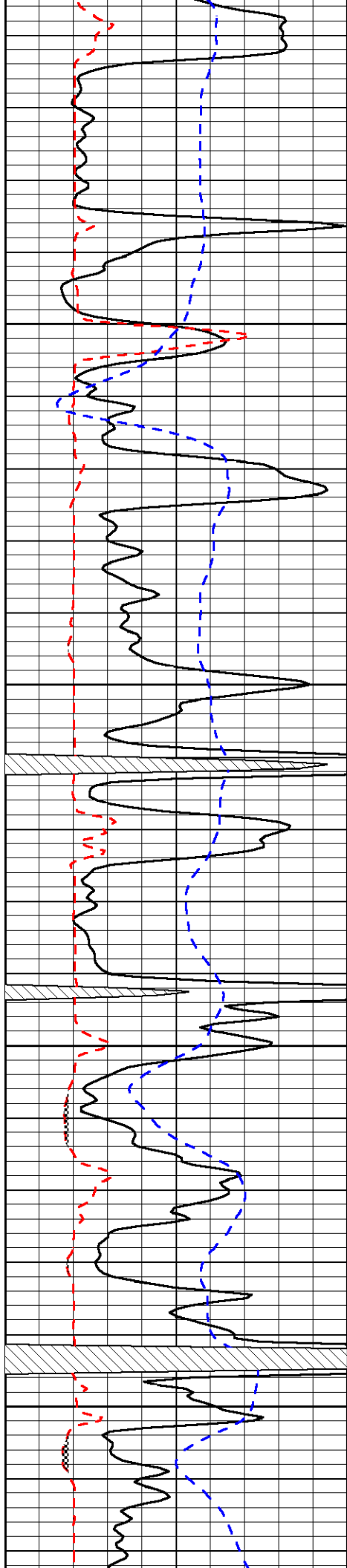
-29

-29

-29

-29

-29

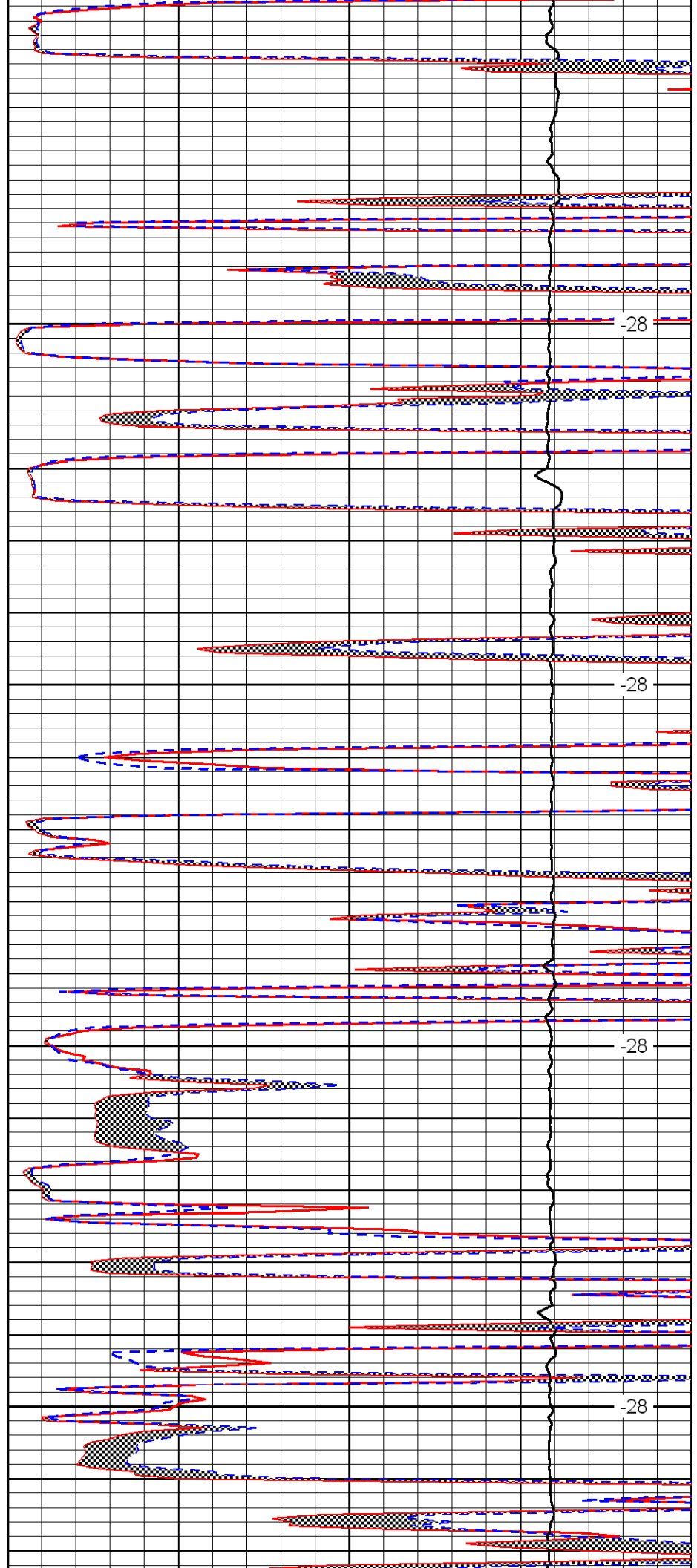


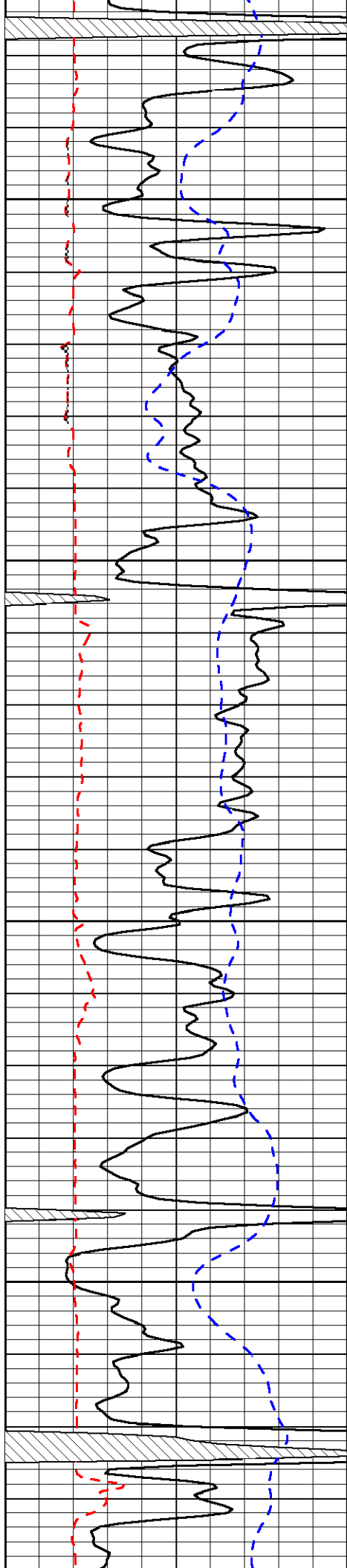
4150

4200

4250

4300



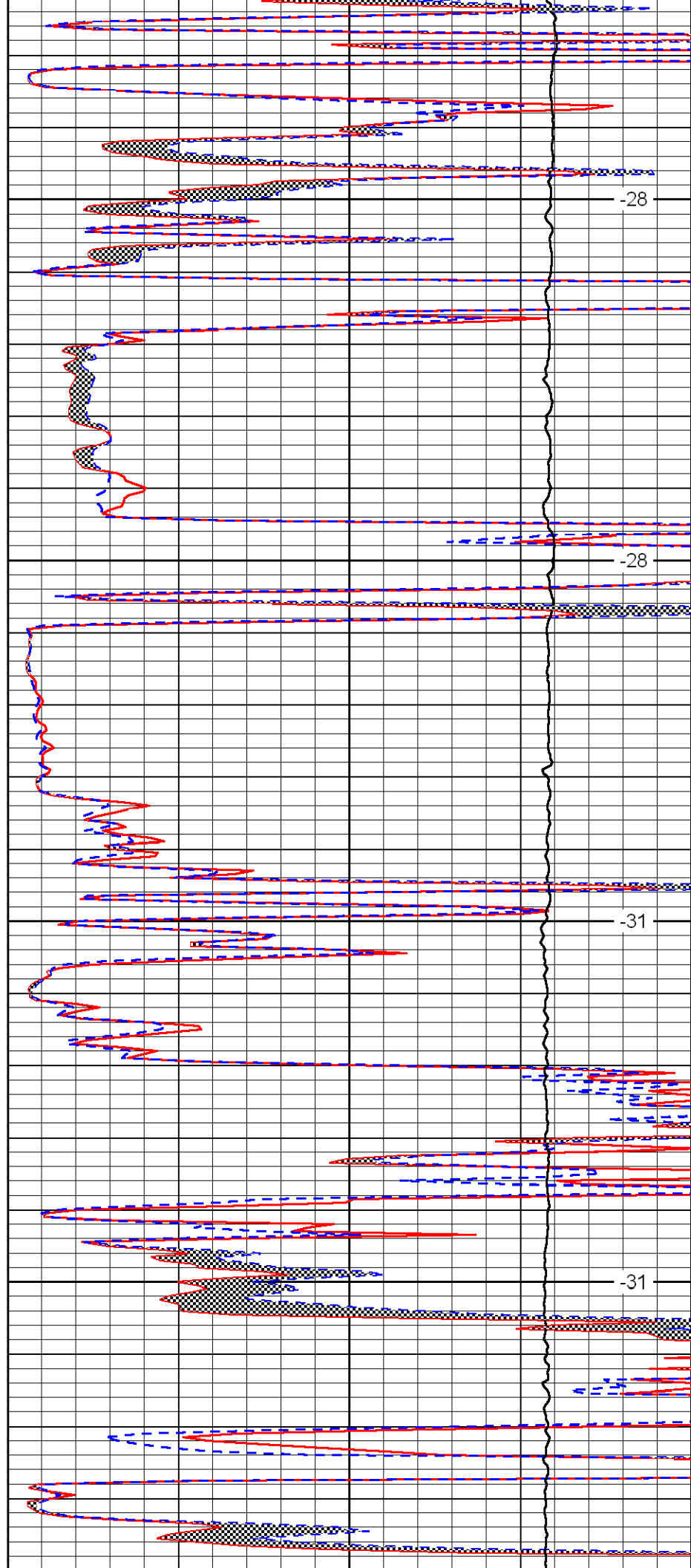


4350

4400

4450

4500

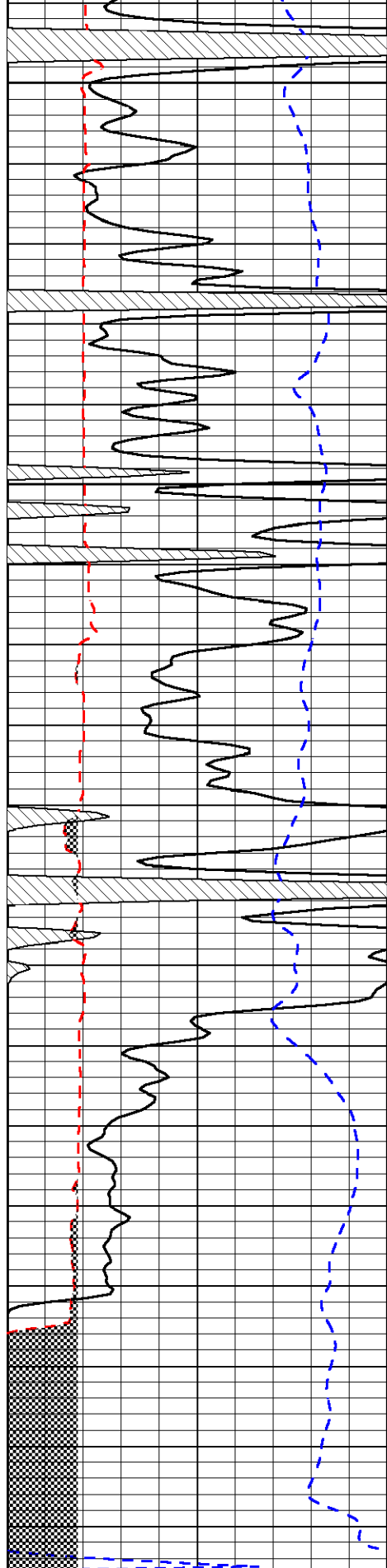


-28

-28

-31

-31



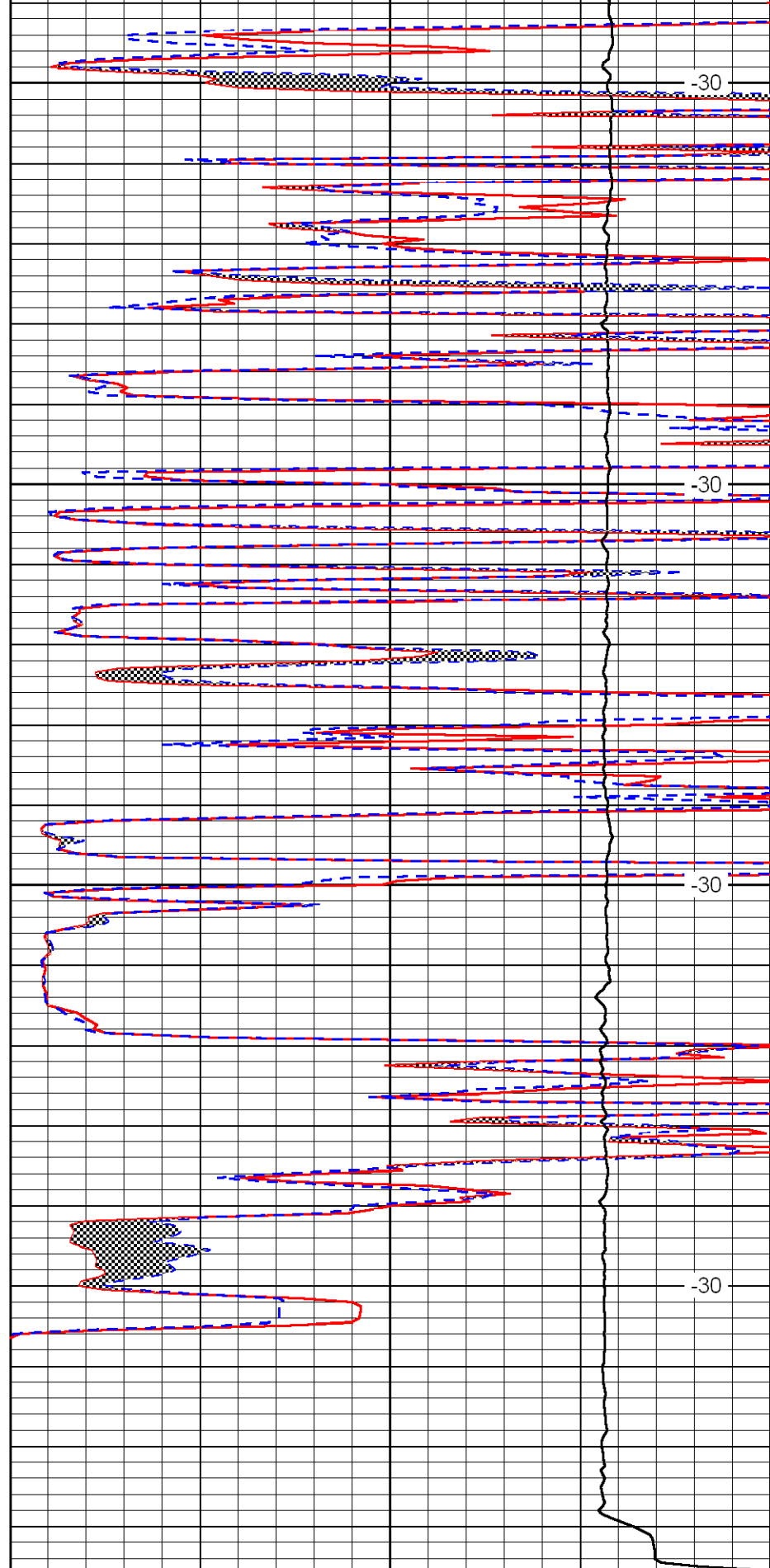
4550

4600

4650

4700

0	Gamma Ray	150
6	Micro Log Caliper (in)	16
-200	SP (MV)	0



-30

-30

-30

-30

0	Micro Inverse 1 X 1 (Ohm-m)	40
0	Micro Normal 2' (Ohm-m)	40
10000	Line Weight (lb)	0

LSPD
(ft/min)

