



**Borehole Compensated
Sonic Log**

DIGITAL LOG (785) 625-3858

API No. 15-109-20,839-00-00	Company Murfin Drilling Company, Inc.	Location 1780' FNL & 1140' FWL	Other Services CNL/CDL MEL/DIL
Well KWS No. 2 - 32	County Logan		
Field Unknown	State Kansas		
Sec: 32	Twp: 12 S	Rge: 32 W	Elevation K.B. 3080 D.F. 3070 G.L. 3070
Permanent Datum Log Measured From Drilling Measured From	Ground Level Kelly Bushing Kelly Bushing	Elevation 3070 10 Ft. Above Perm. Datum	

Date	5/16/2009
Run Number	Two
Type Log	BHC Sonic
Depth Driller	4730
Depth Logger	4729
Bottom Logged Interval	4718
Top Logged Interval	200
Type Fluid In Hole	Chemical
Salinity, PPM CL	7,900
Density	9.2
Level	Full
Max. Rec. Temp. F	123
Operating Rig Time	5 Hours
Equipment -- Location	15 Hays
Recorded By	B. Becker
Witnessed By	Jeff Christian

Run No	Bit	Borehole Record		Casing Record	
		From	To	From	To
1	12.25	00	216	8.625	24#
2	7.875	216	4730		

<<< Fold Here >>>

All interpretations are opinions based on inferences from electrical or other measurements and we cannot and do not guarantee the accuracy or correctness of any interpretation, and we shall not, except in the case of gross or willful negligence on our part, be liable or responsible for any loss, costs, damages, or expenses incurred or sustained by anyone resulting from any interpretation made by any of our officers, agents or employees. These interpretations are also subject to our general terms and conditions set out in our current Price Schedule.

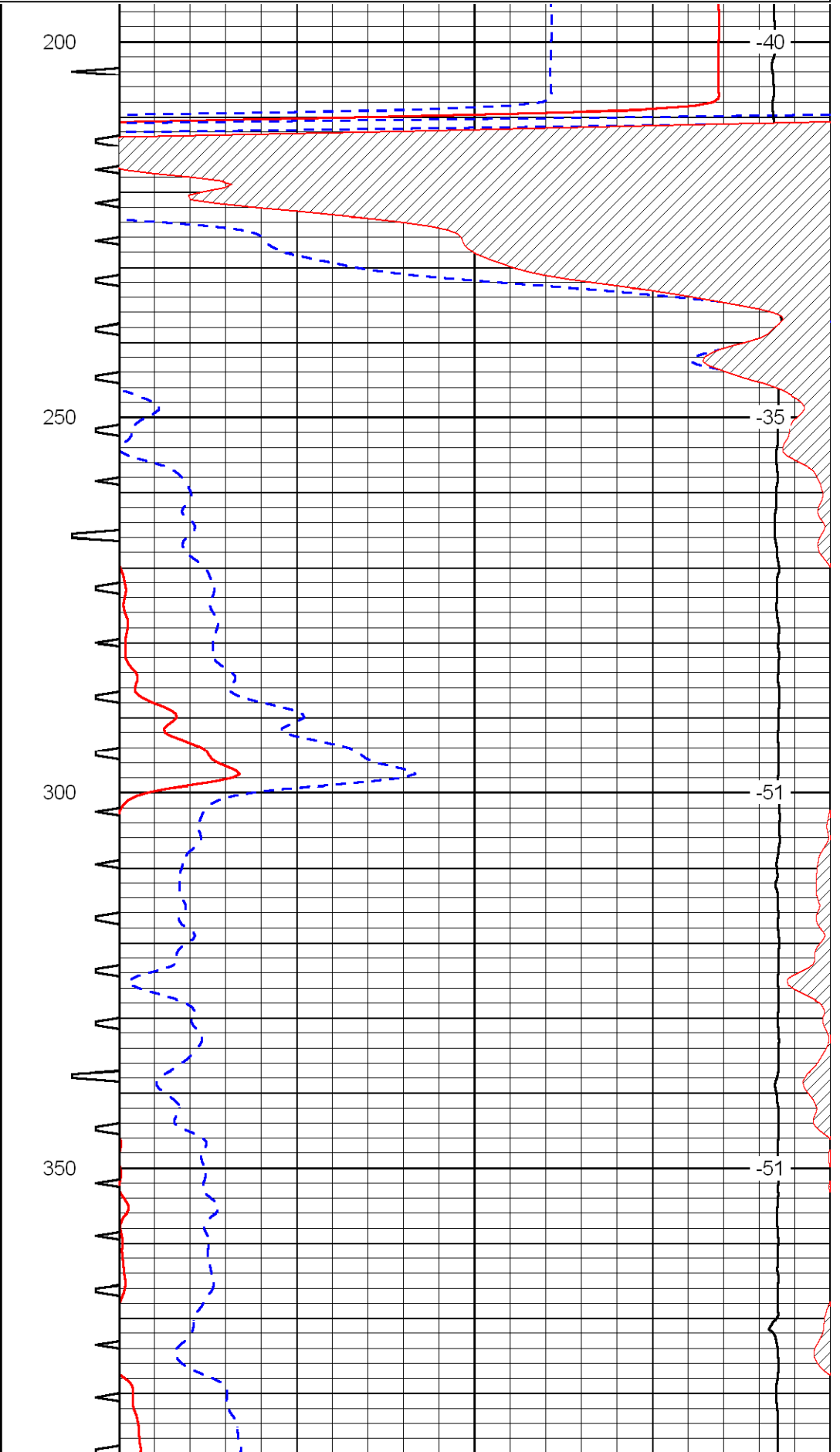
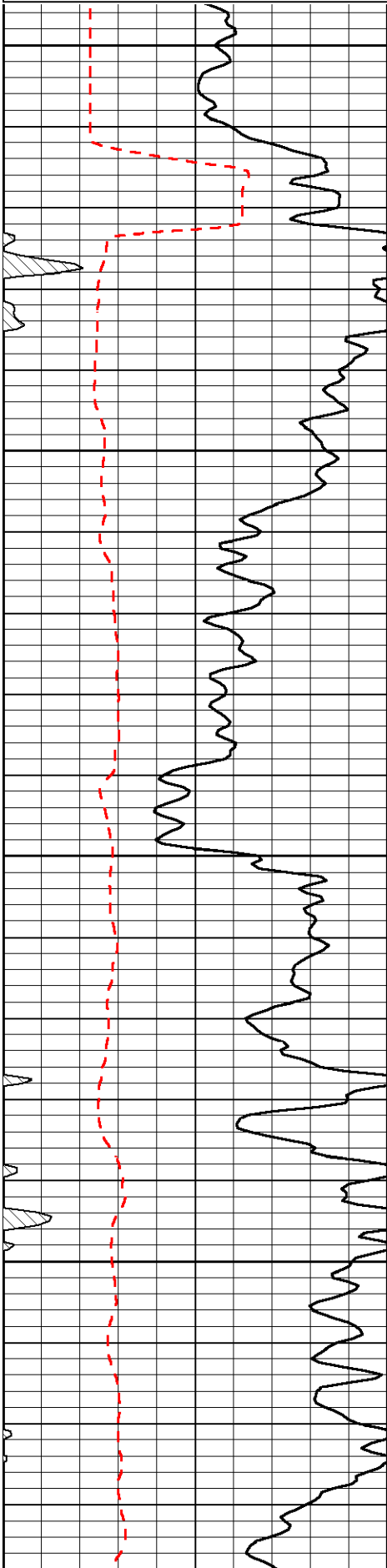
Comments

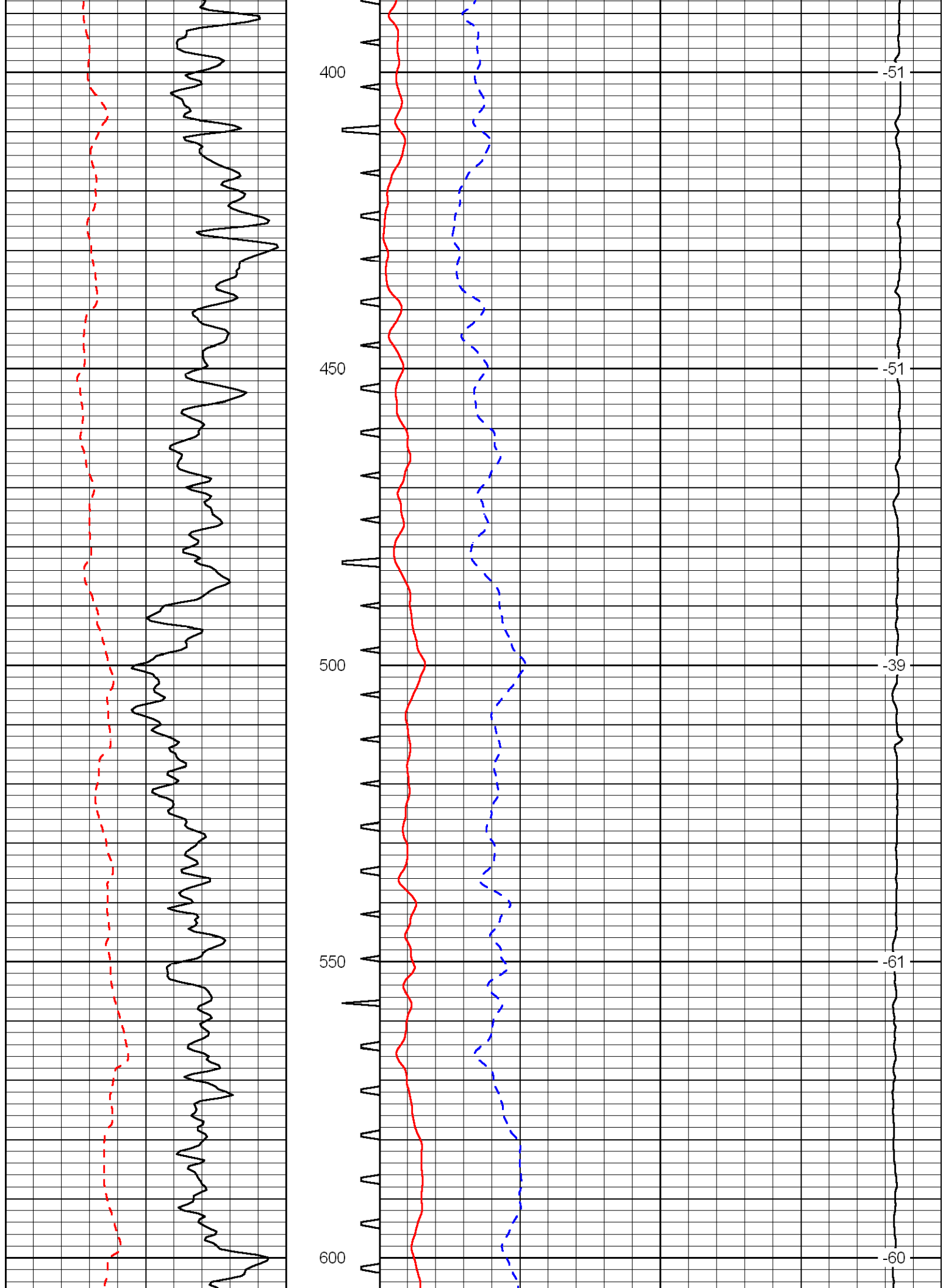
Thank you for using Log-Tech, Inc.
(785) 625-3858

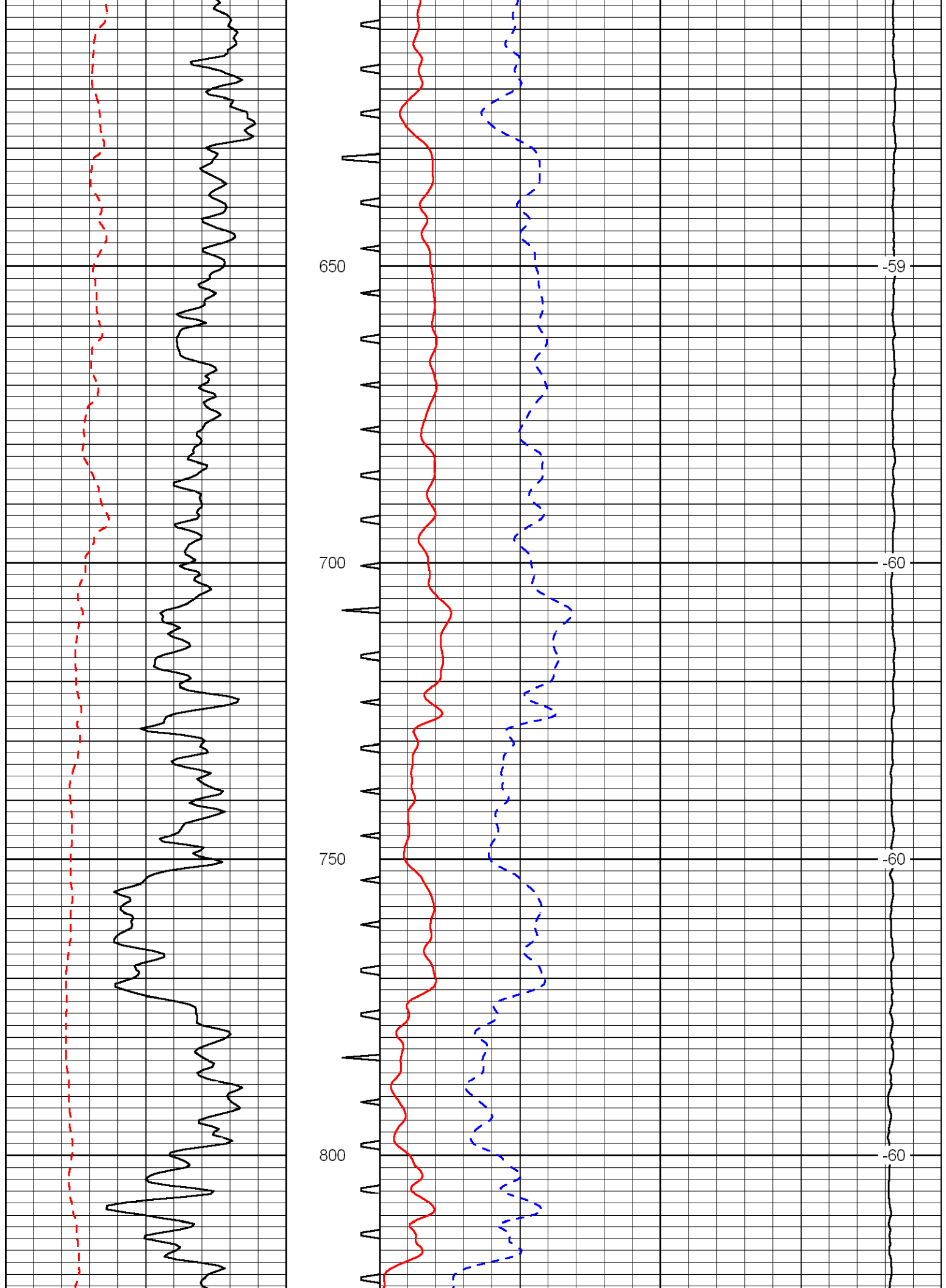
Oakley, Ks; 11 South; 3 West; 1/2 North; East into

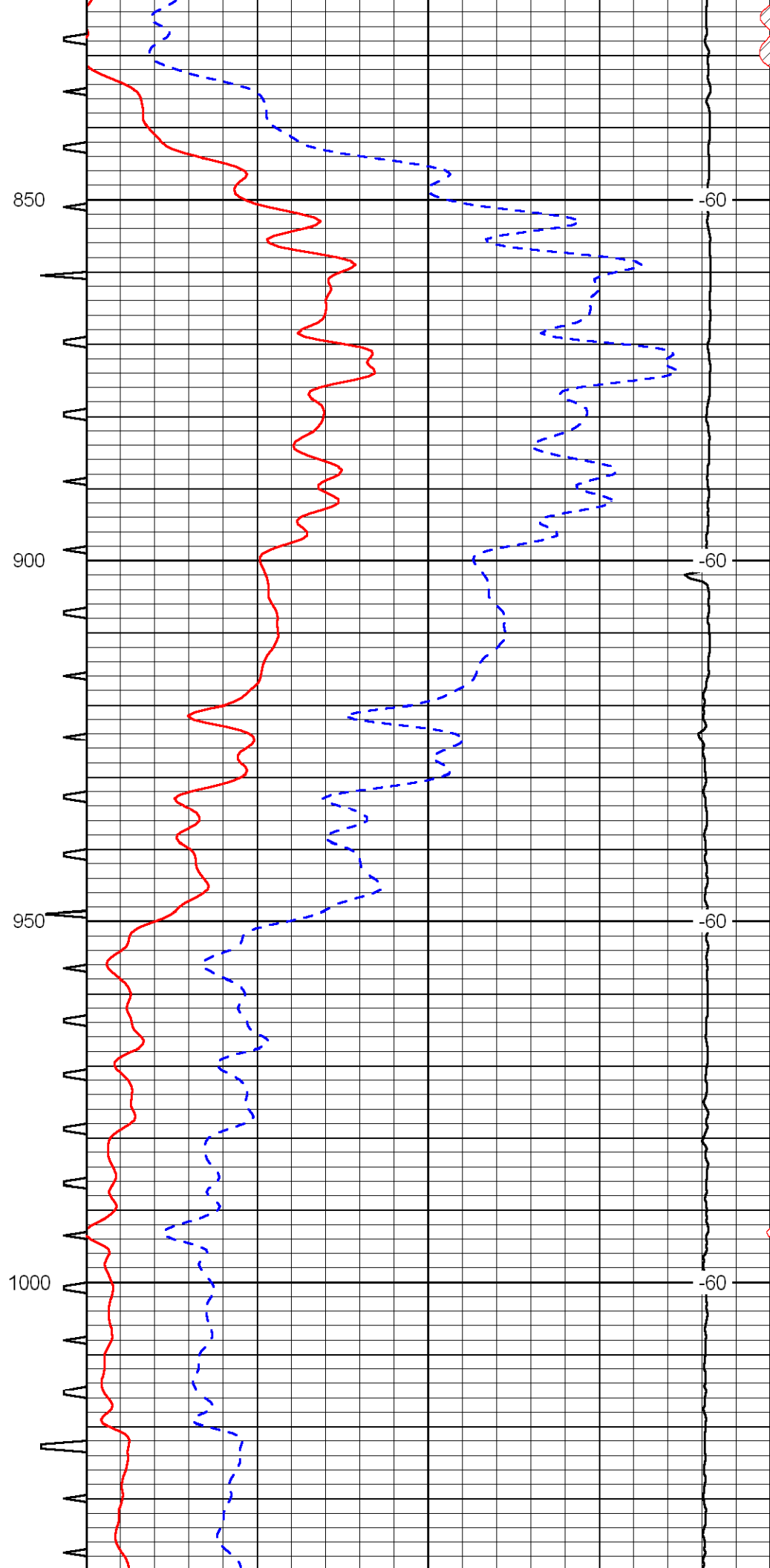
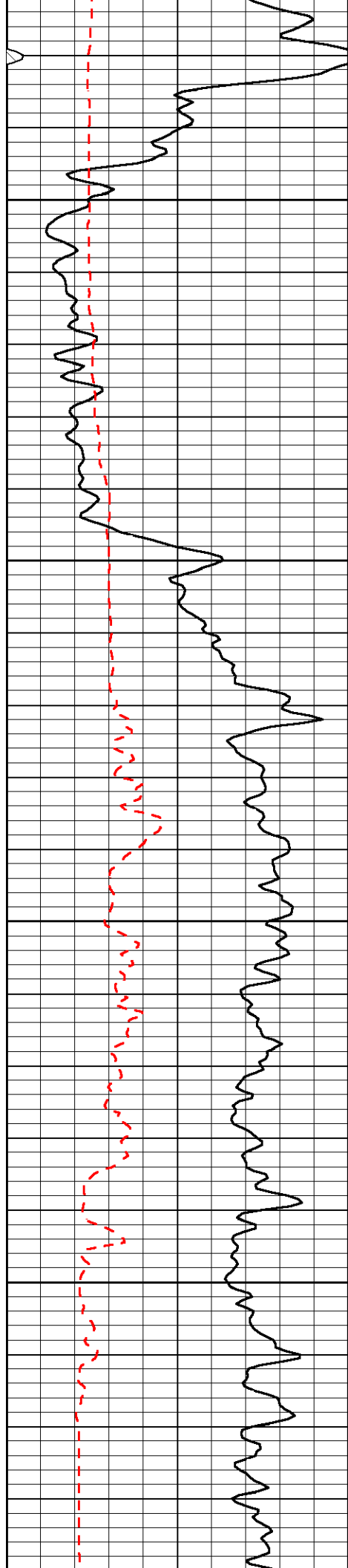
Database File:	c:\warrior\data\murfin_kws no. 2 - 32\murfinhd.db
Dataset Pathname:	DIL/murfstk
Presentation Format:	sonic
Dataset Creation:	Sat May 16 10:25:39 2009
Charted by:	Depth in Feet scaled 1:240

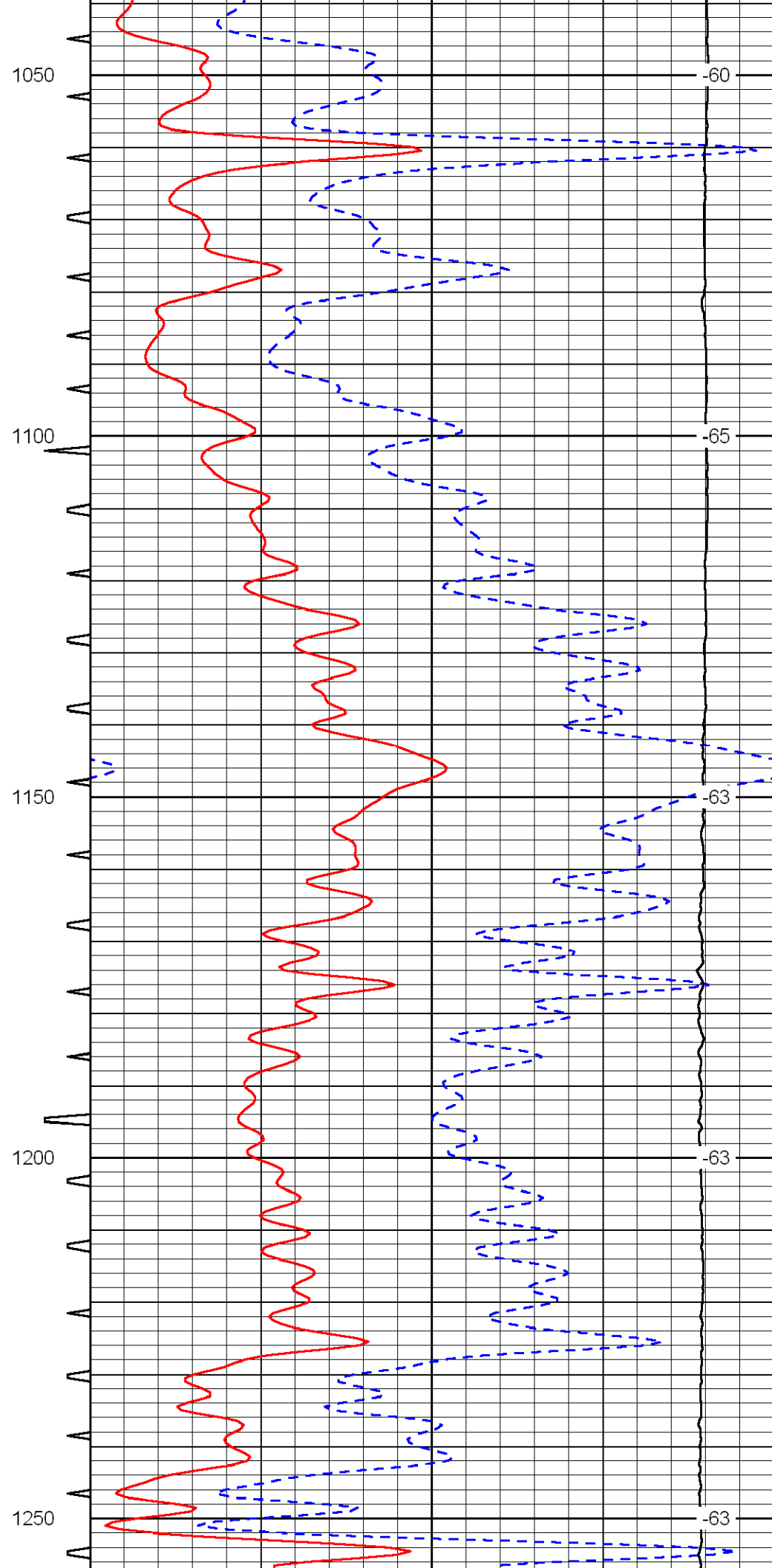
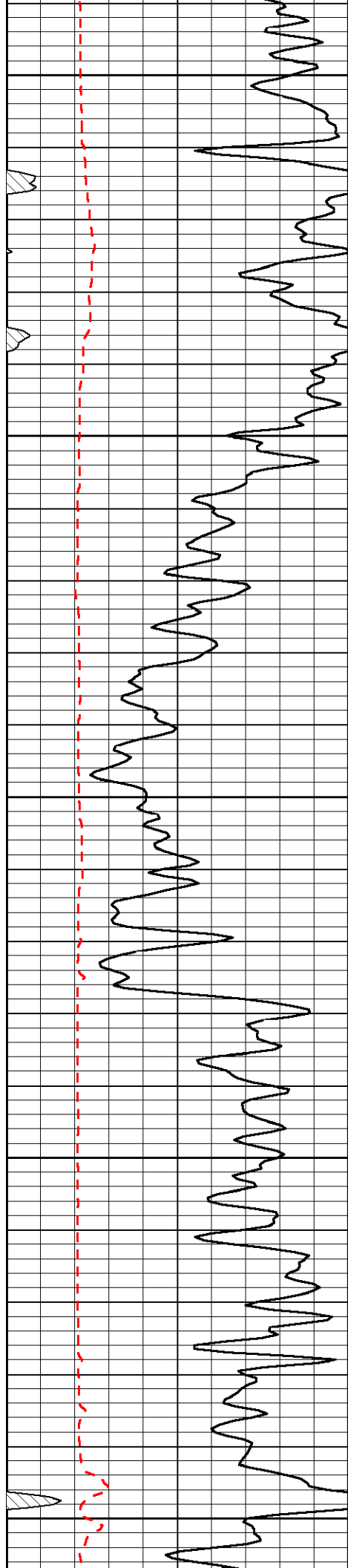
0	Gamma Ray	150	Sonic Int	140	Delta Time (usec/ft) (usec/ft)	40
150	Gamma Ray	300	5 (msec)	0	SPOR (pu)	-10
6	Caliper (in)	16		10000	LTEN (lb) (lb)	0
						LSPD (ft/min)

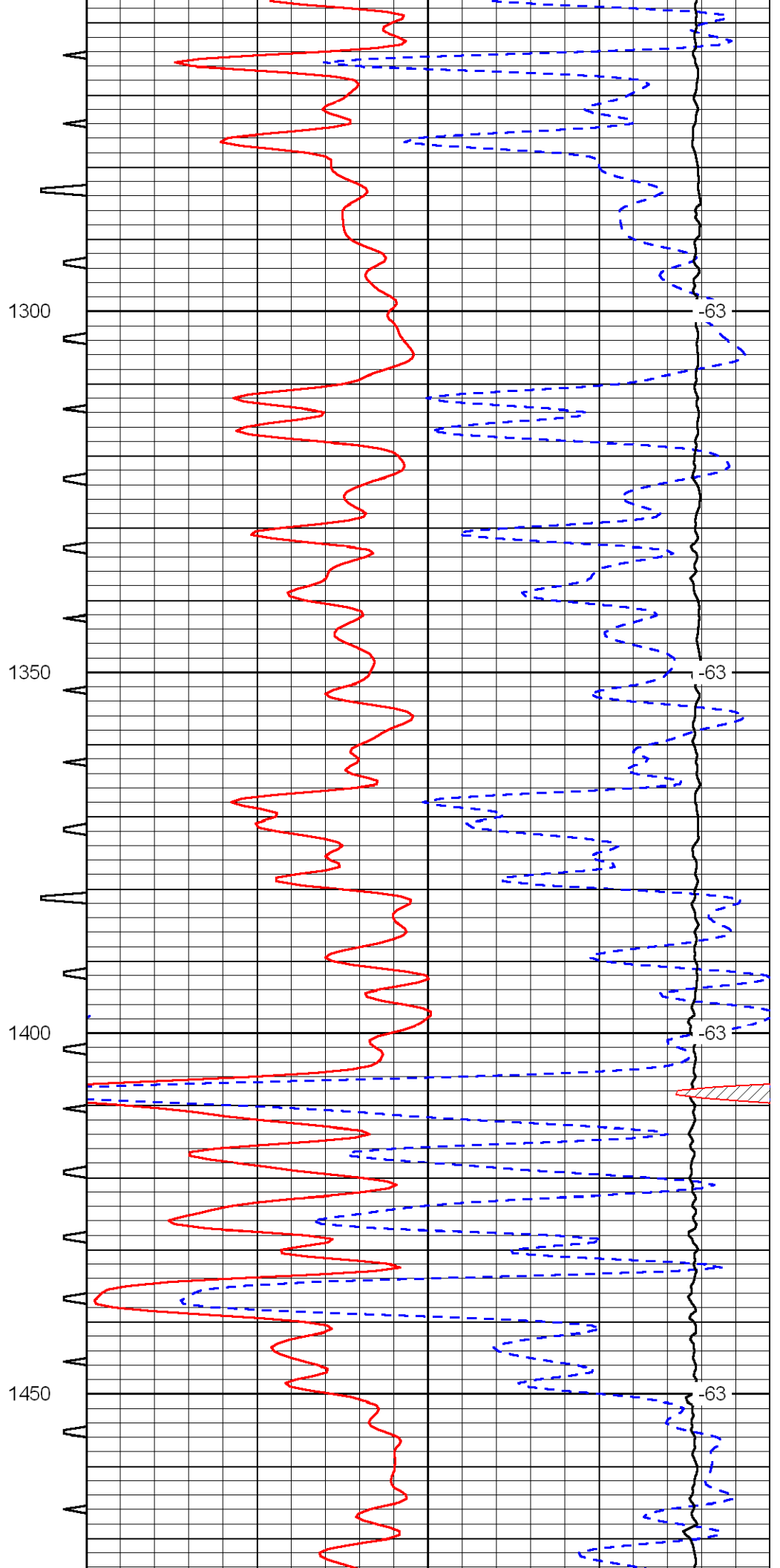
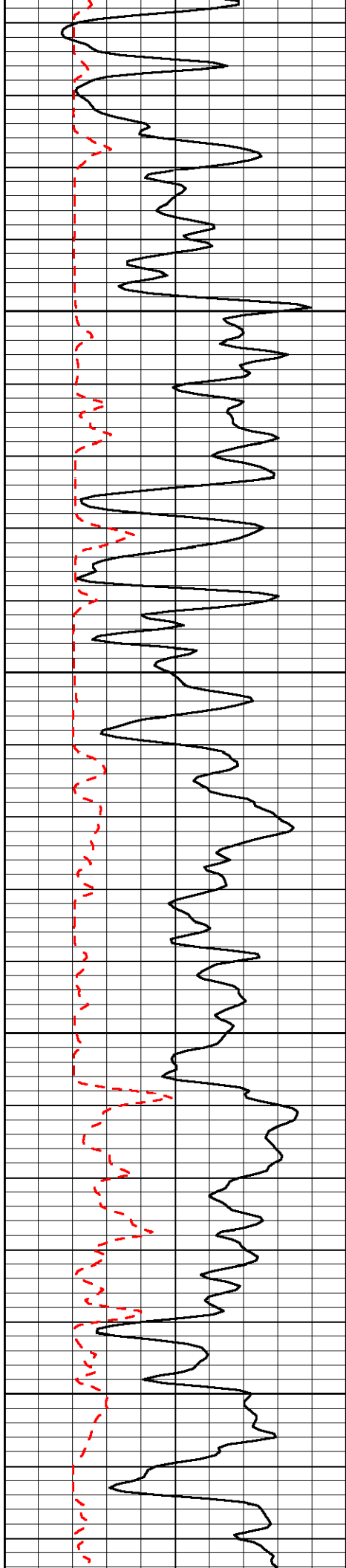


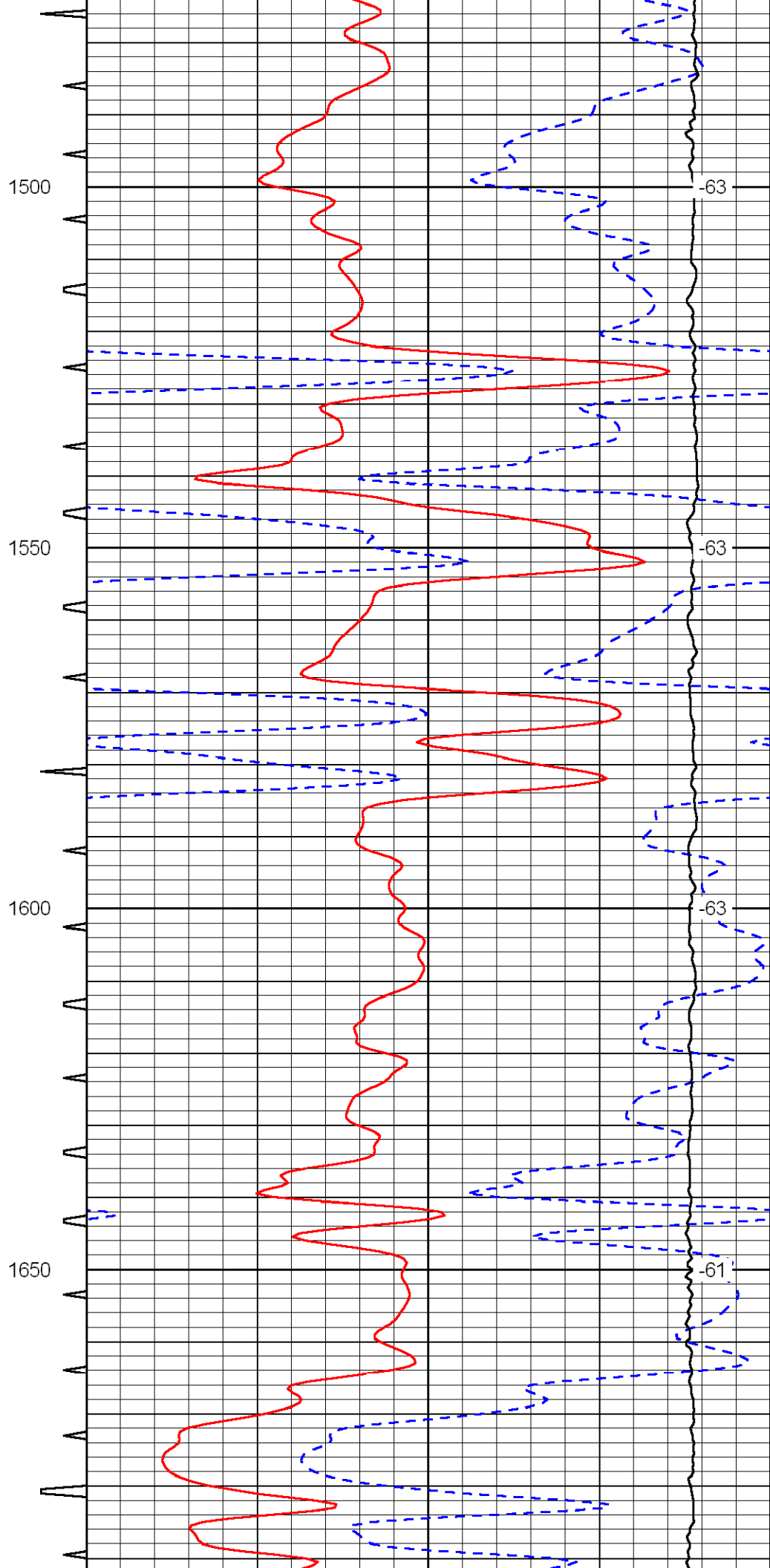
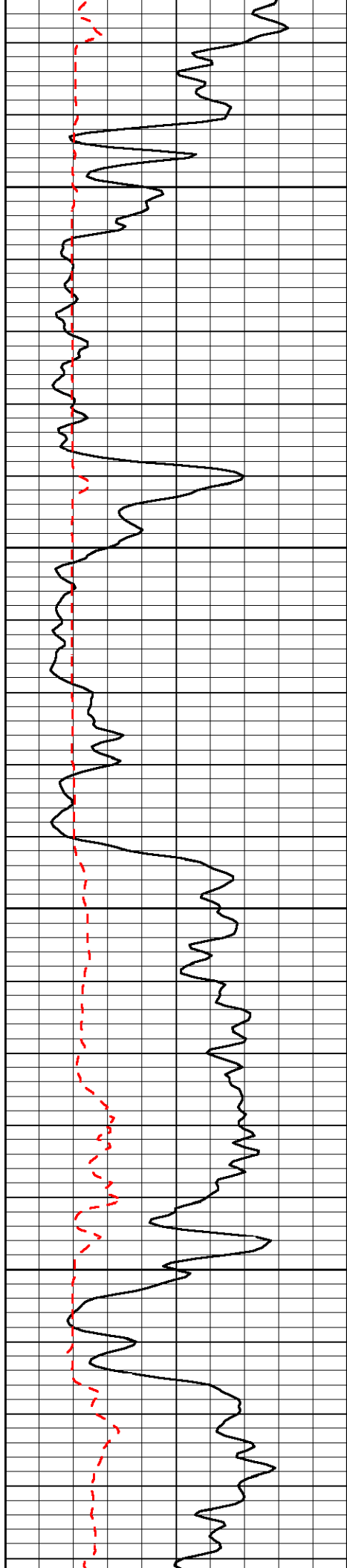


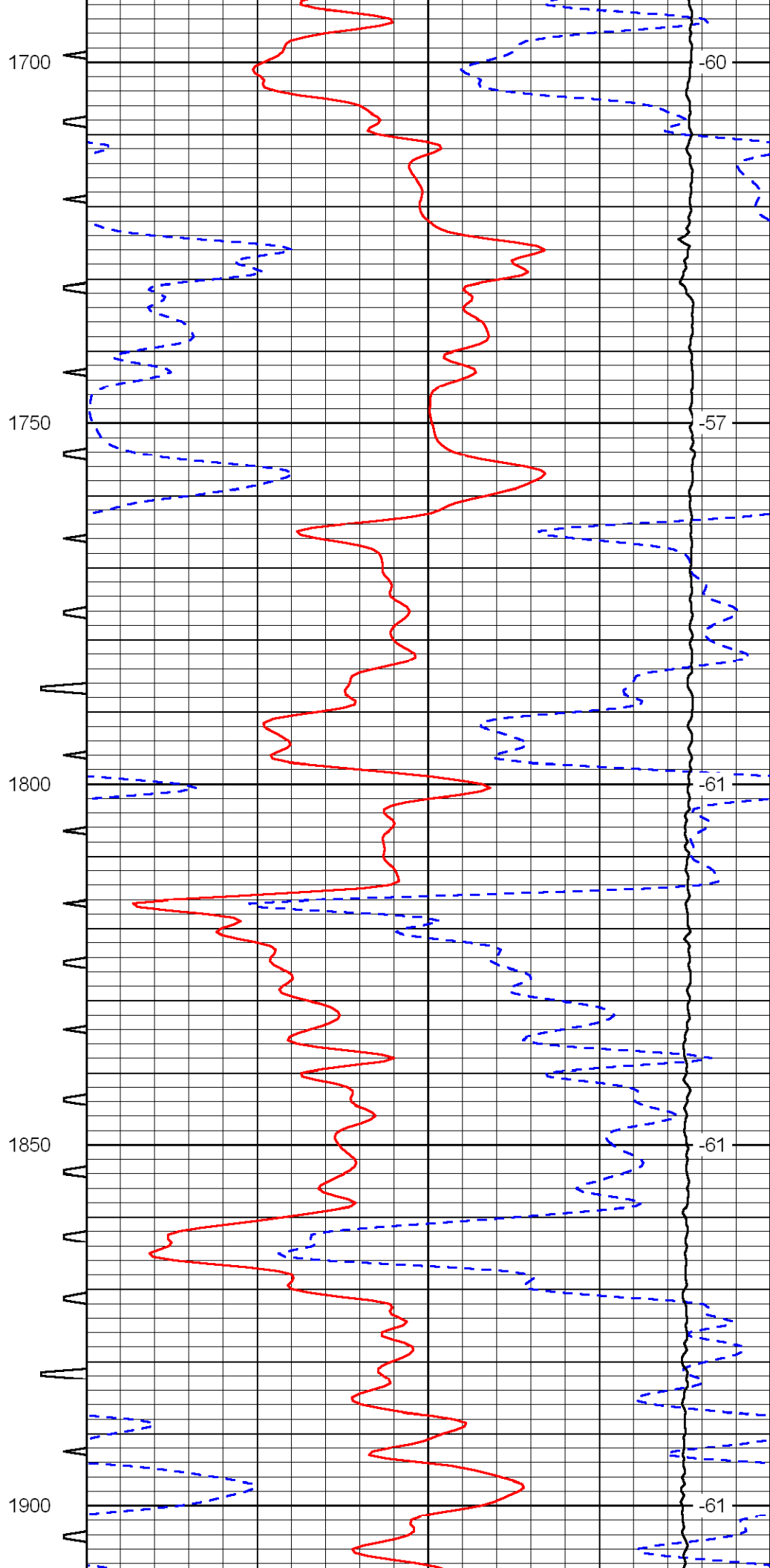
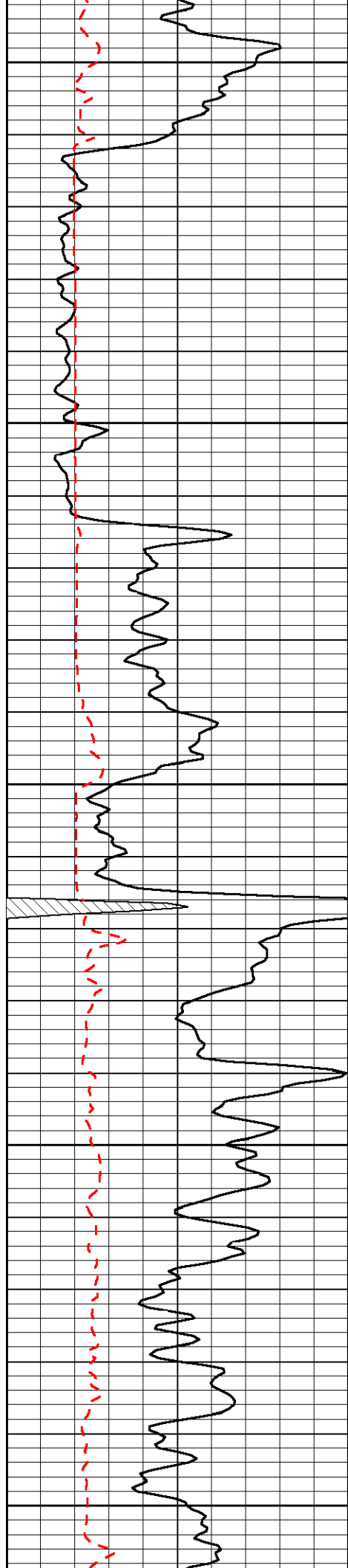


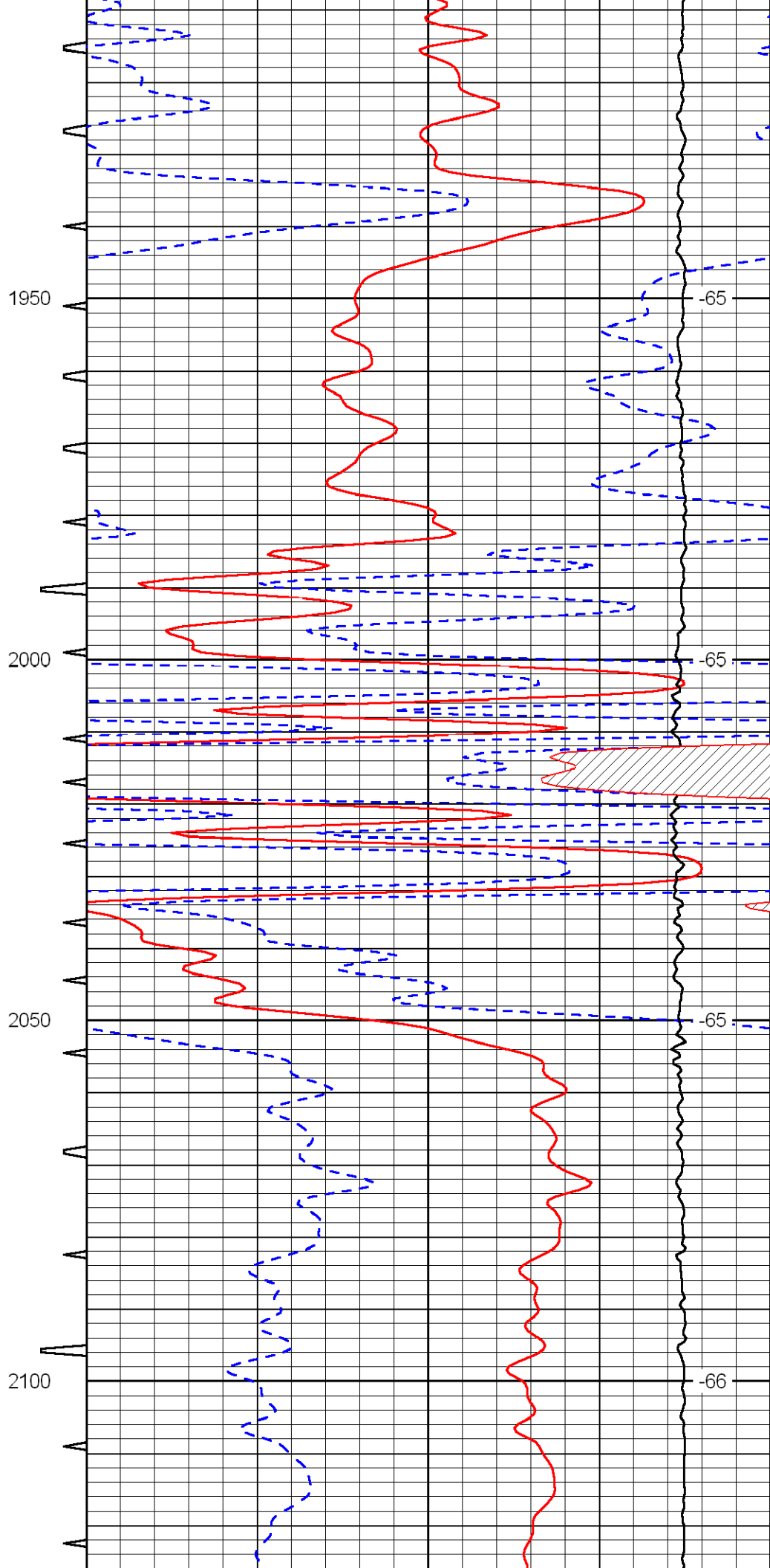
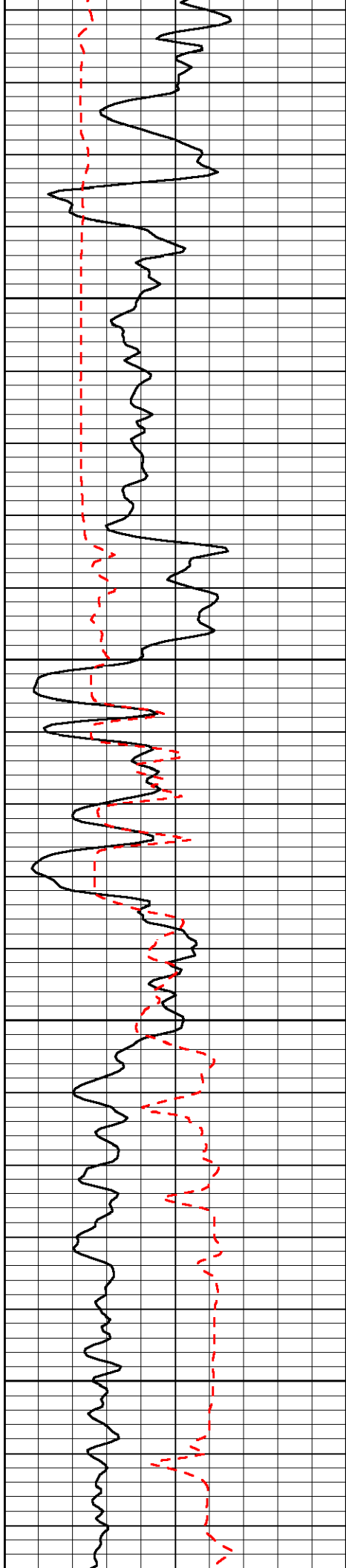


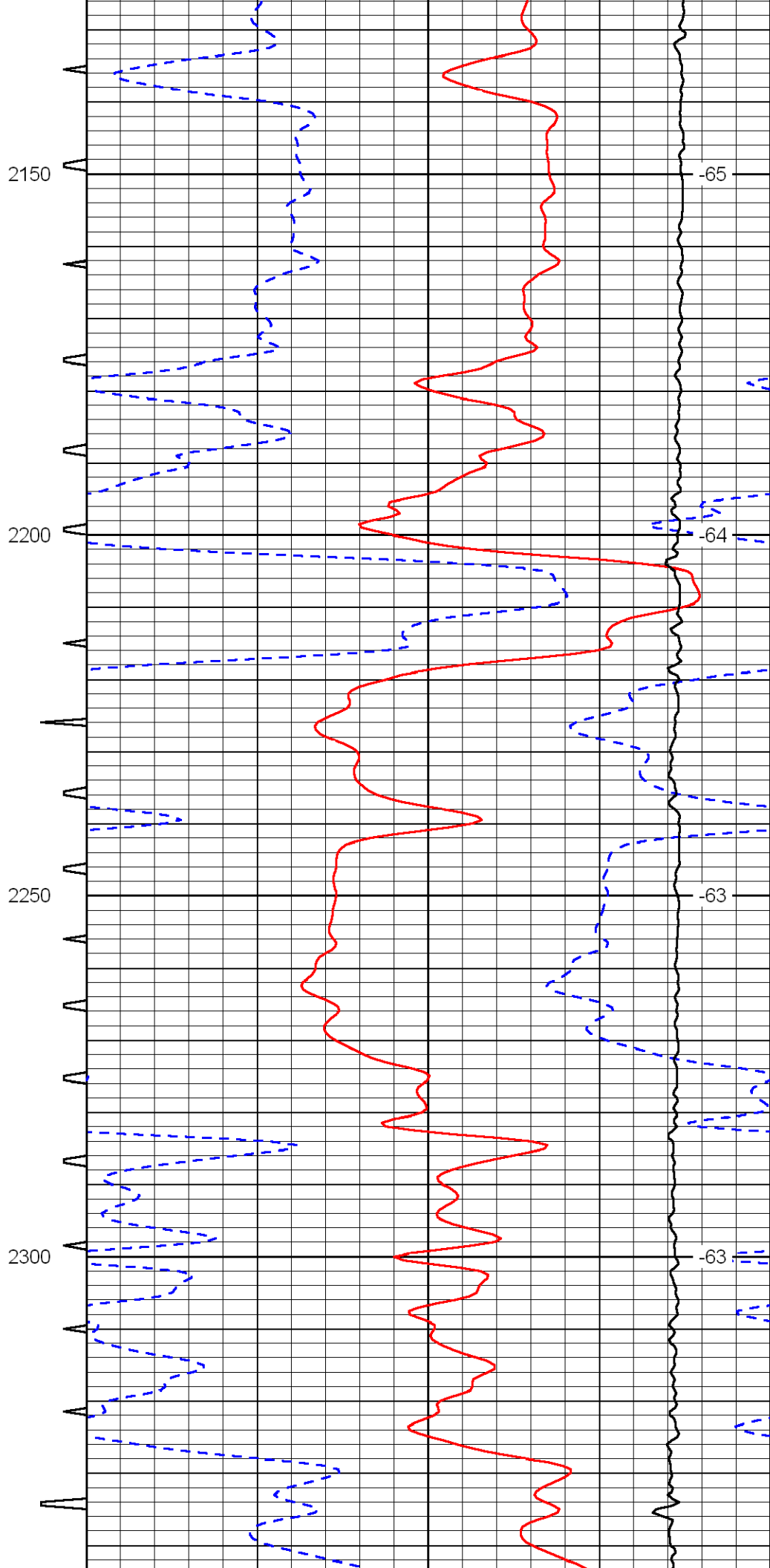
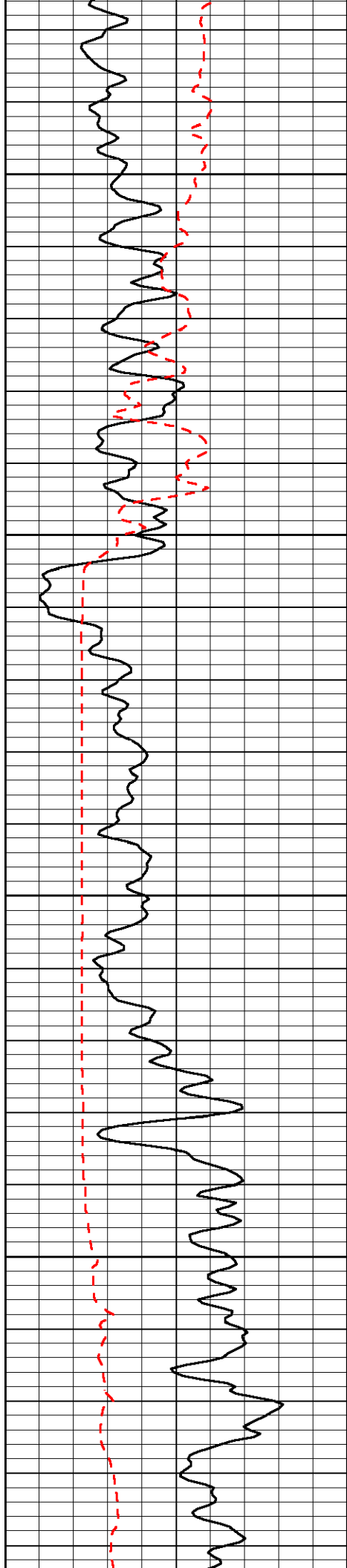


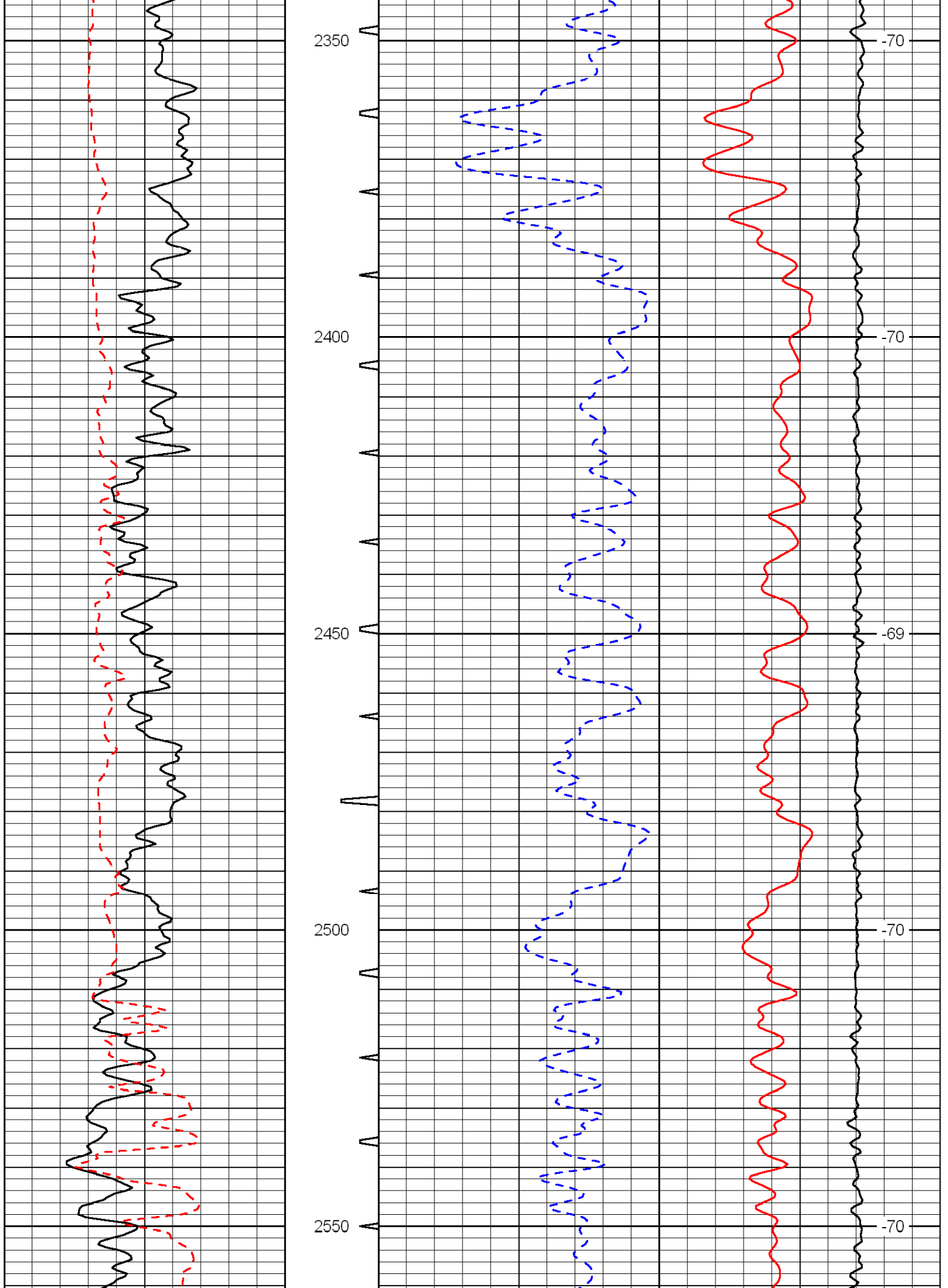


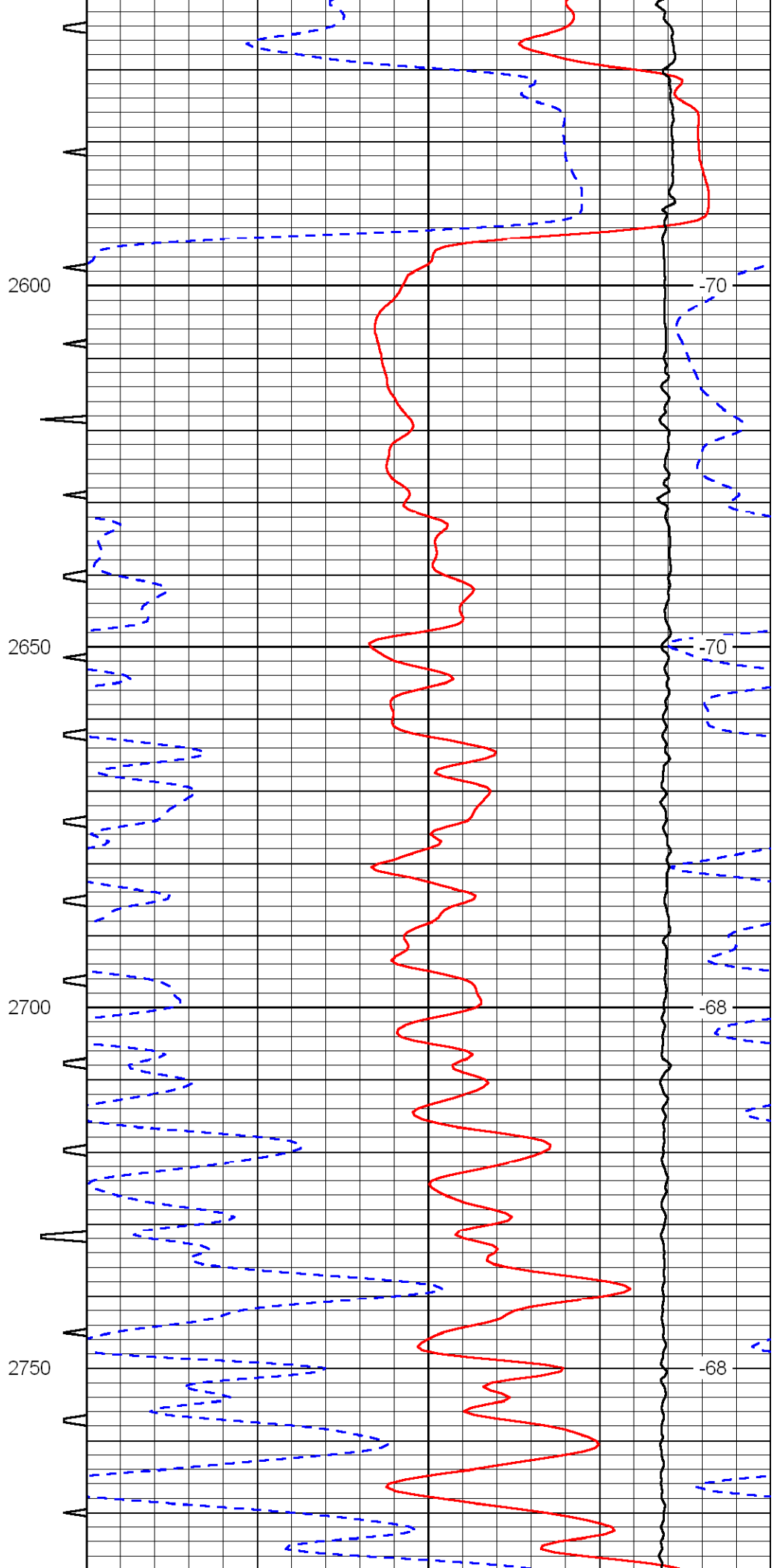
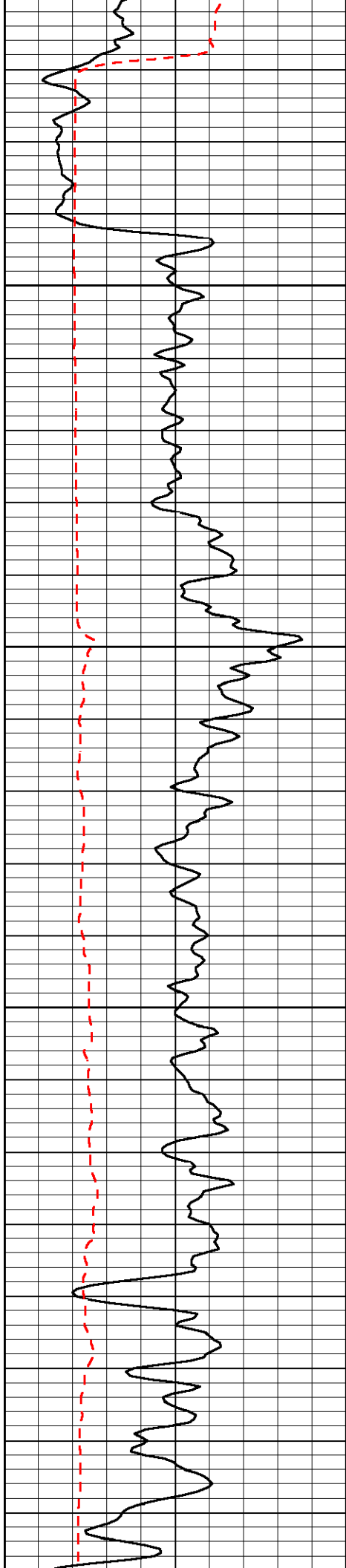


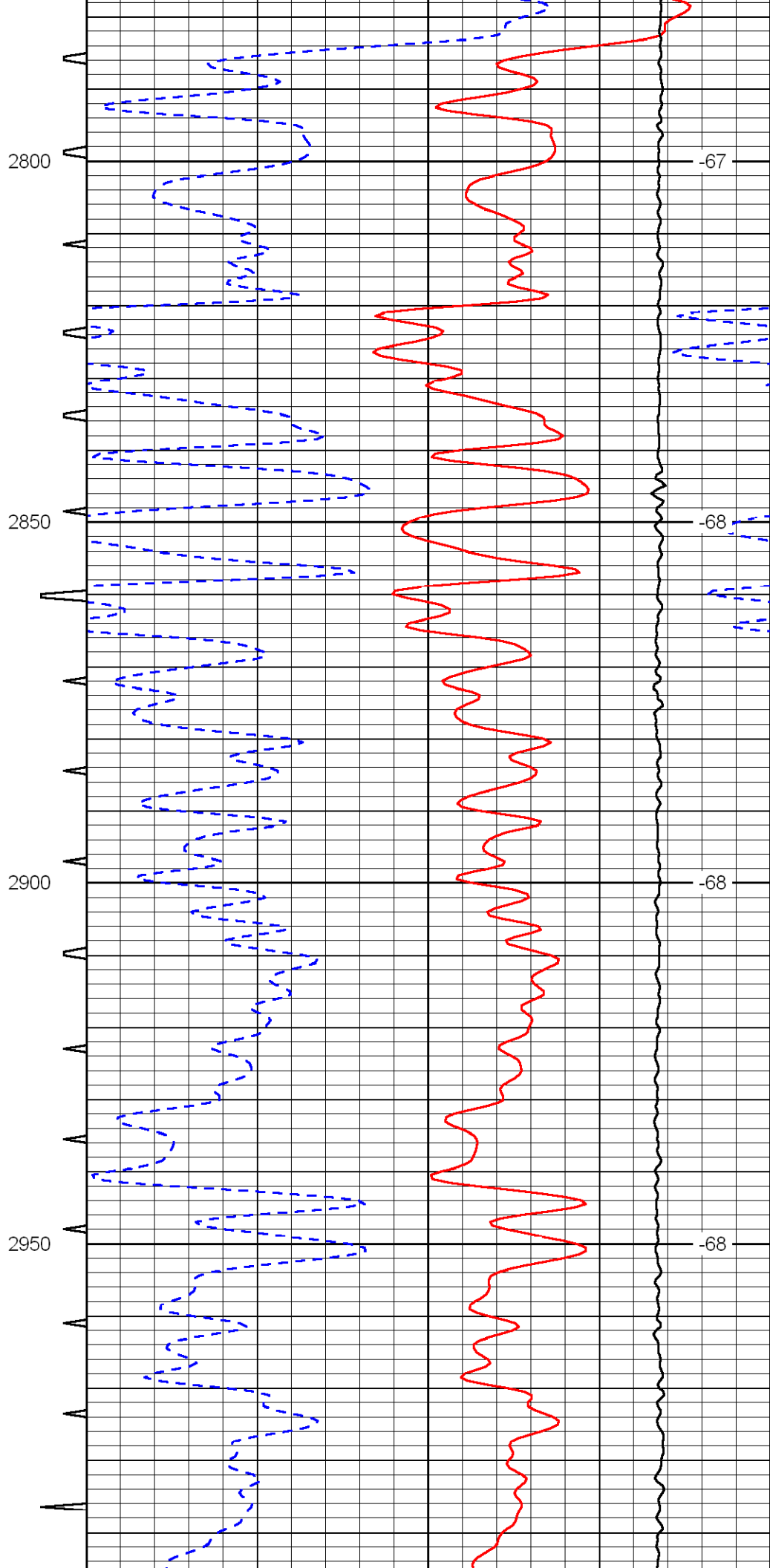
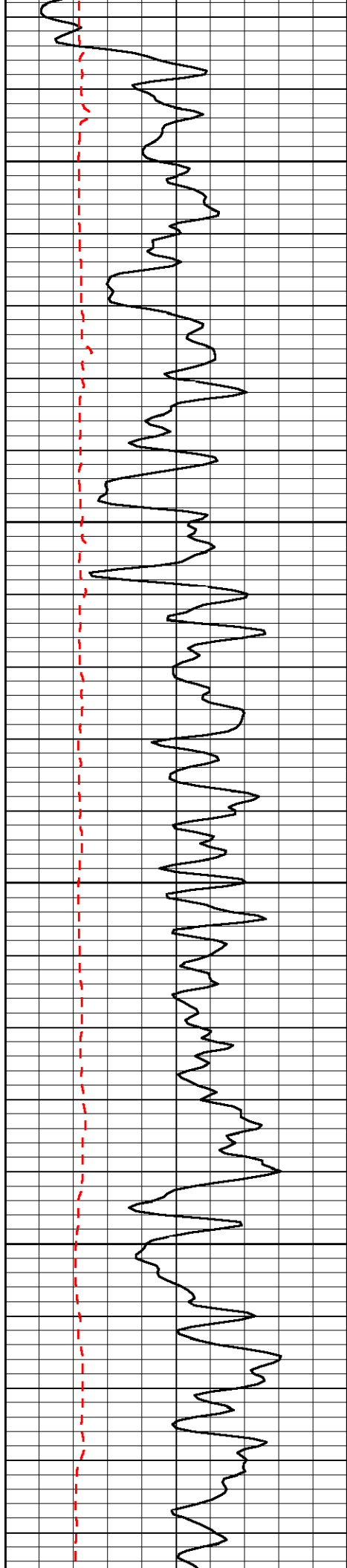


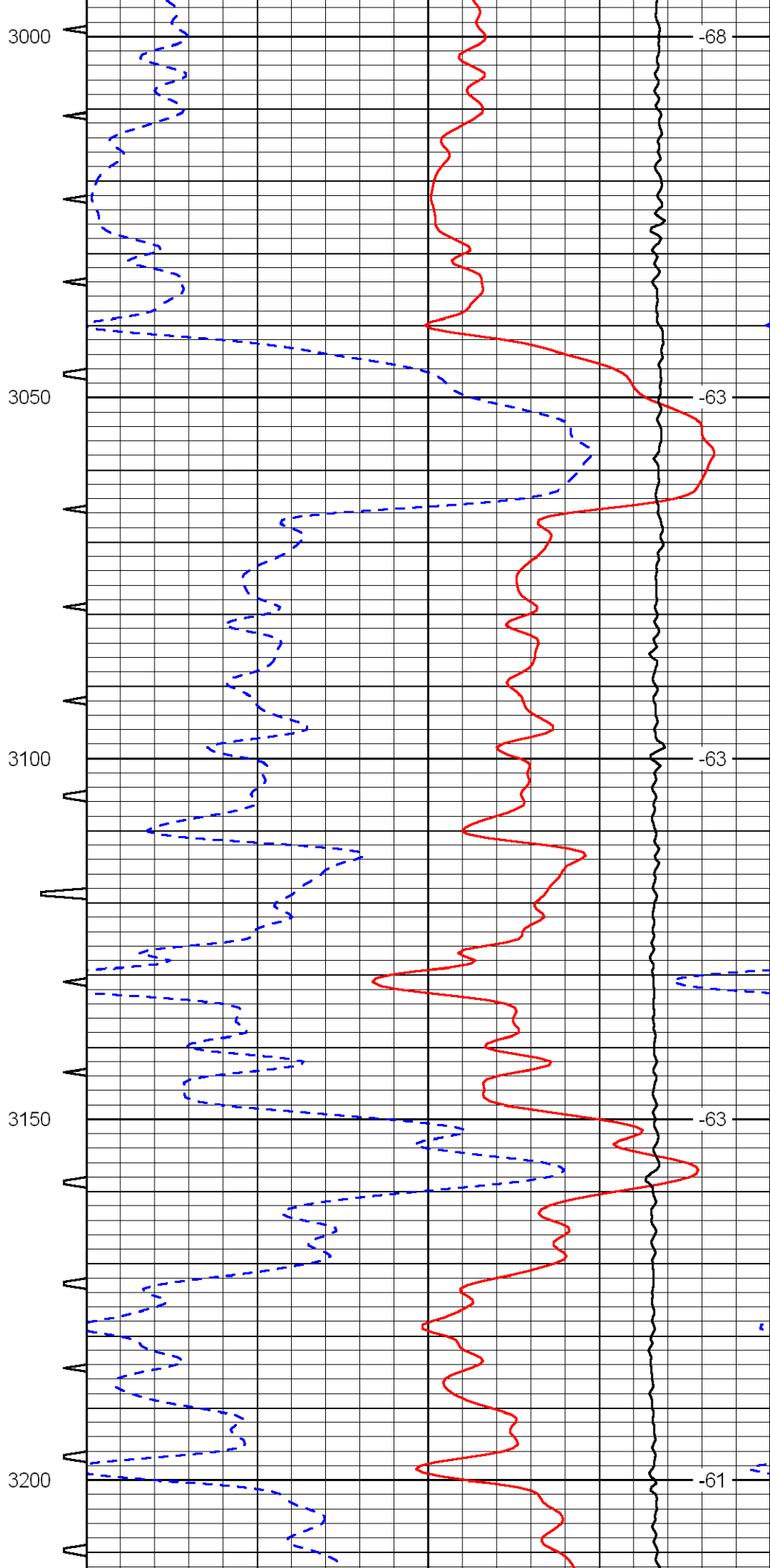
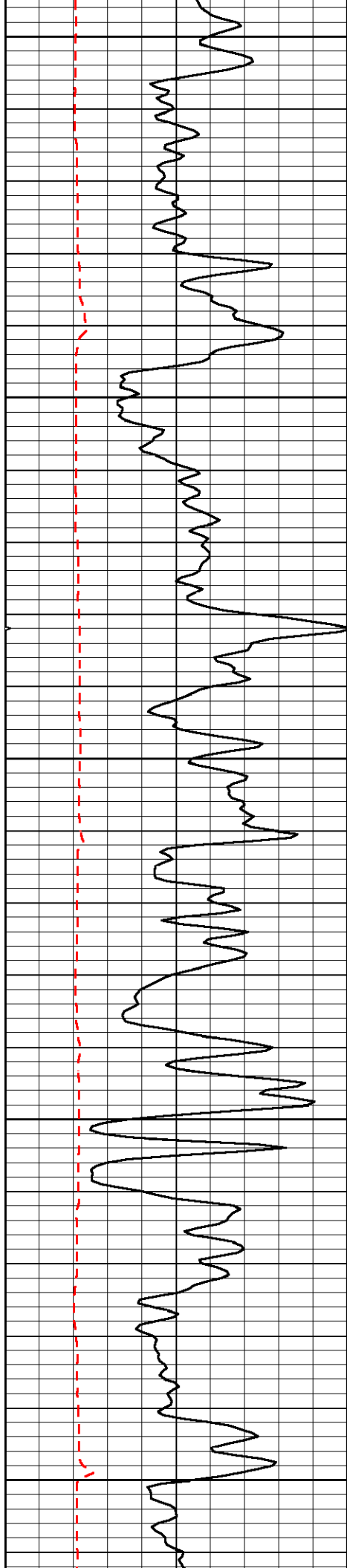


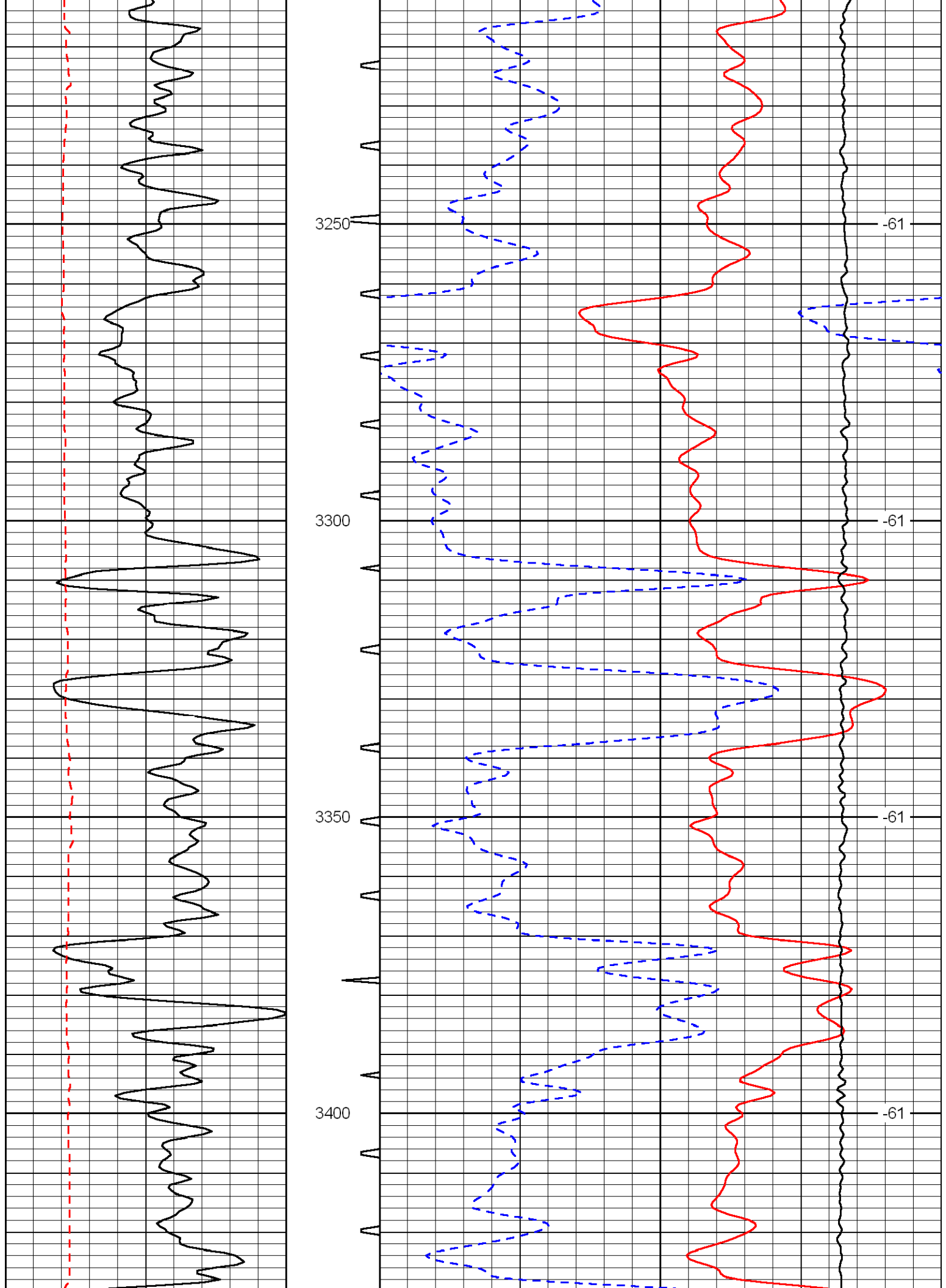


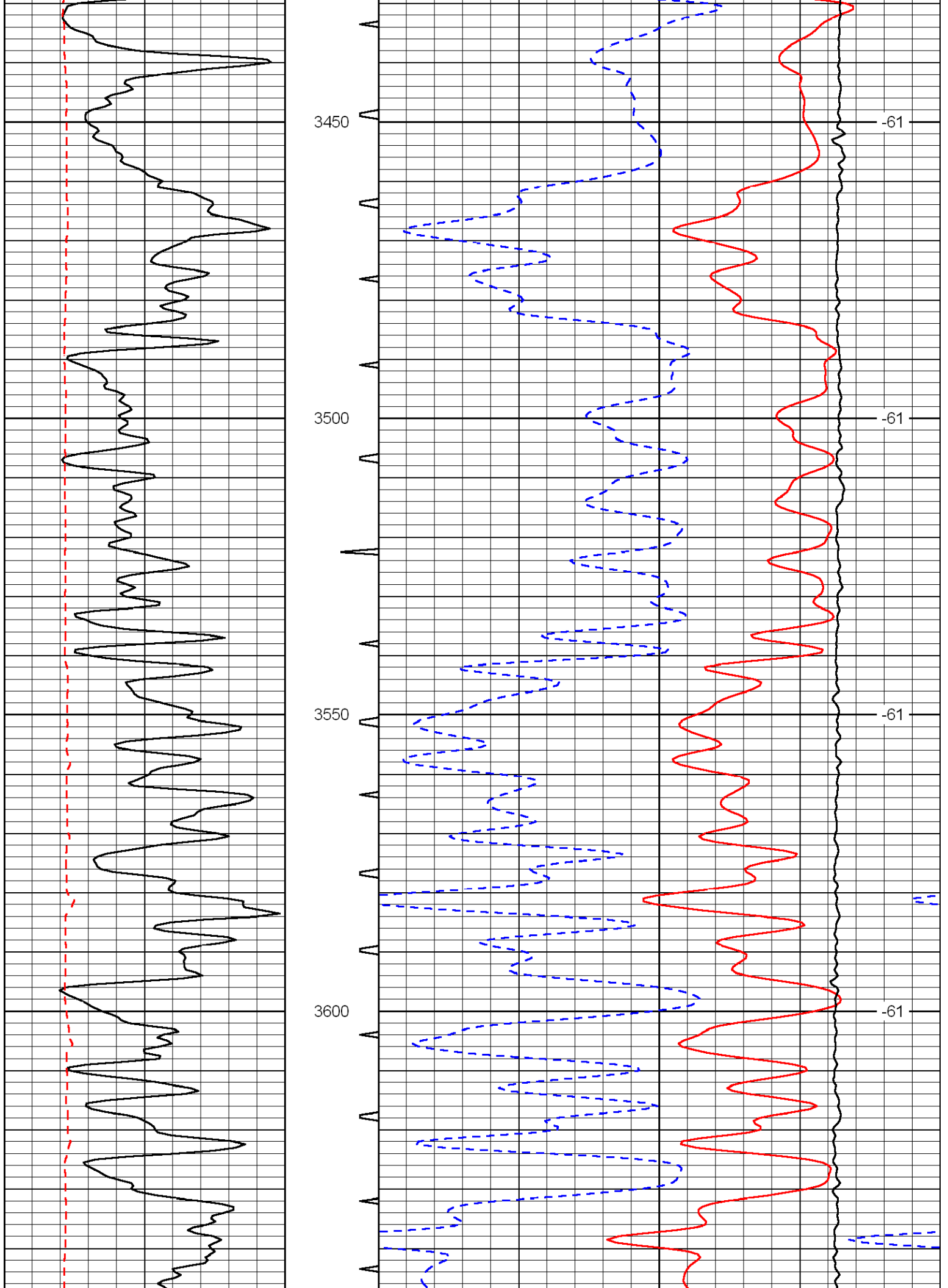


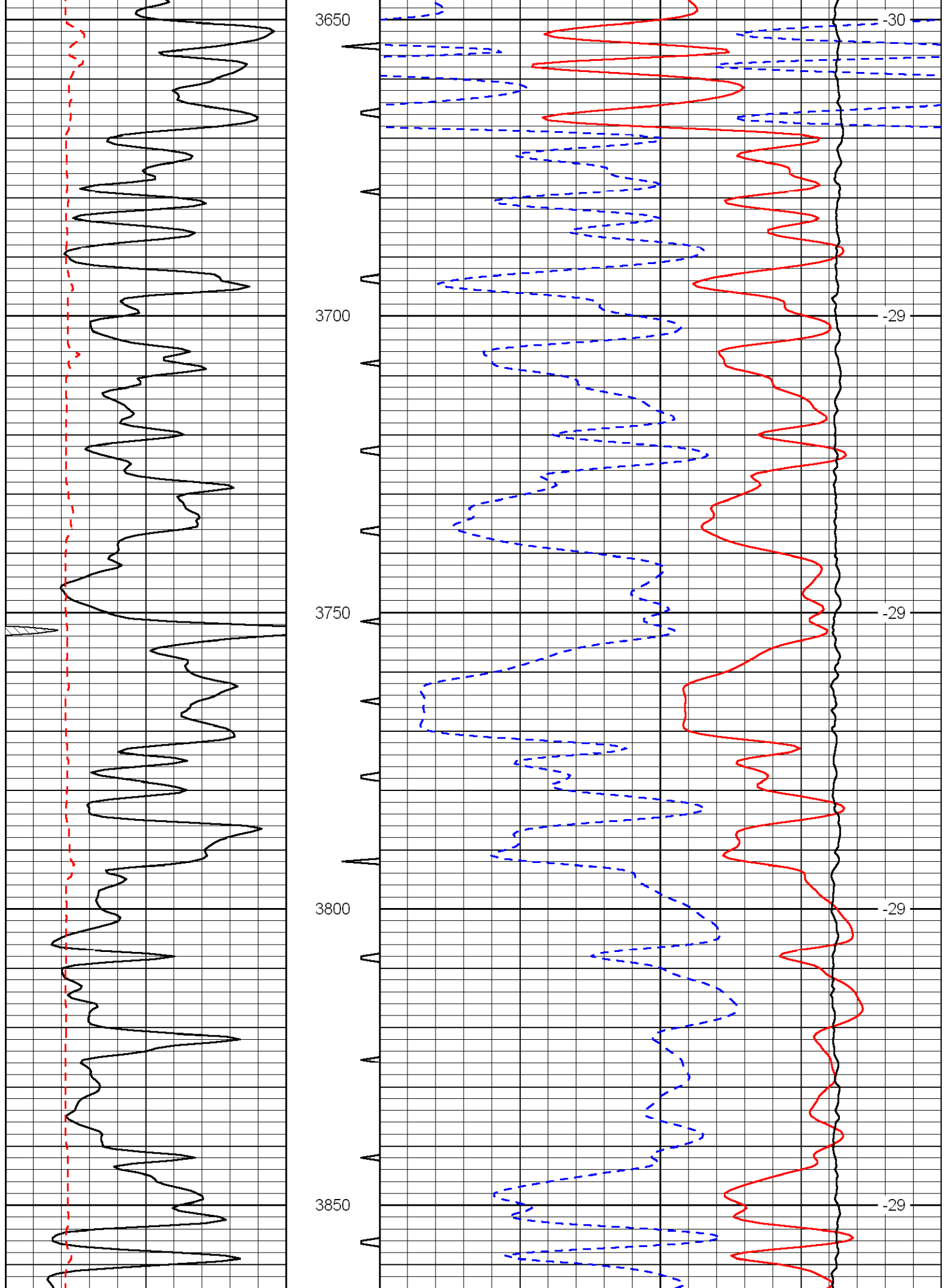


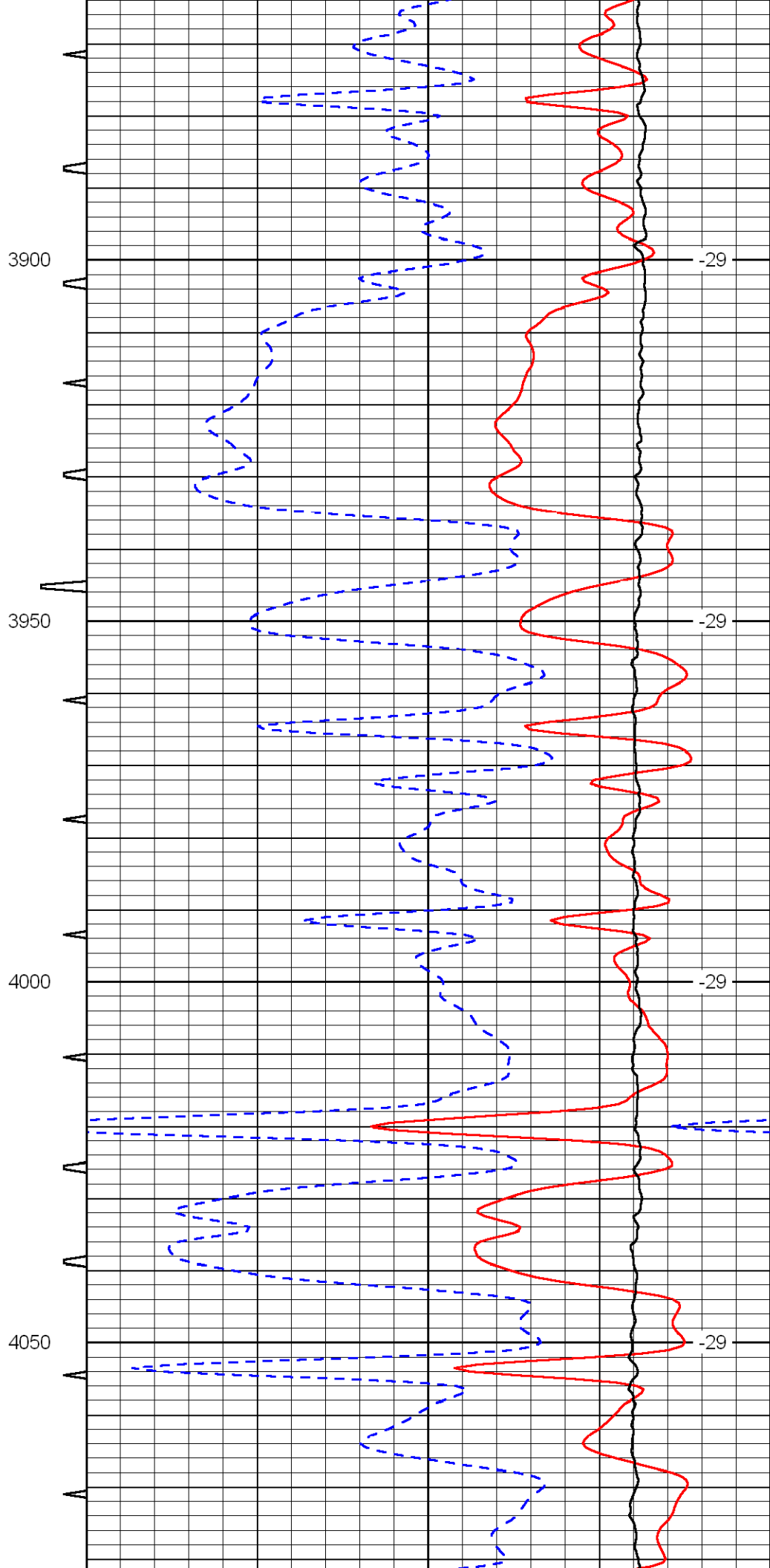
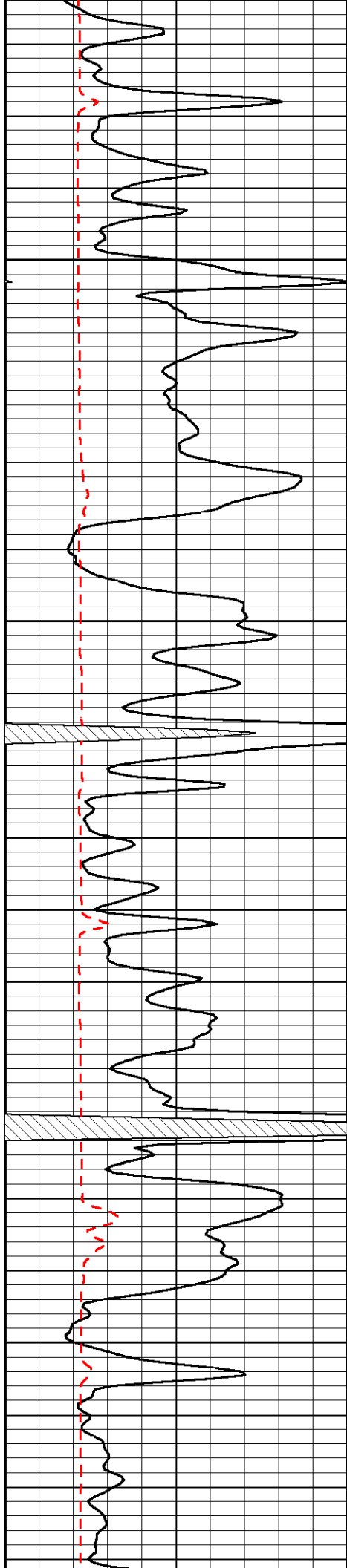


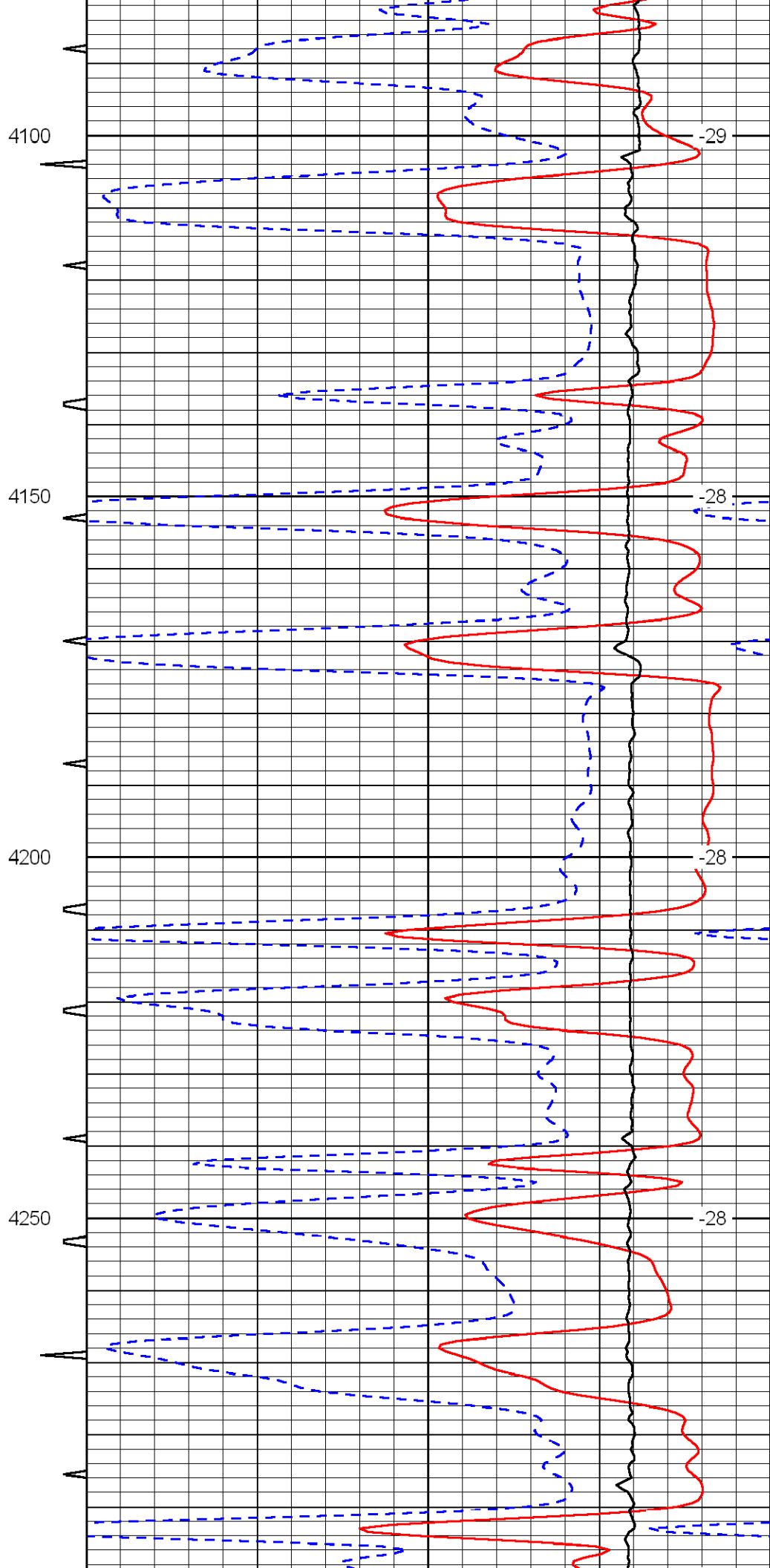
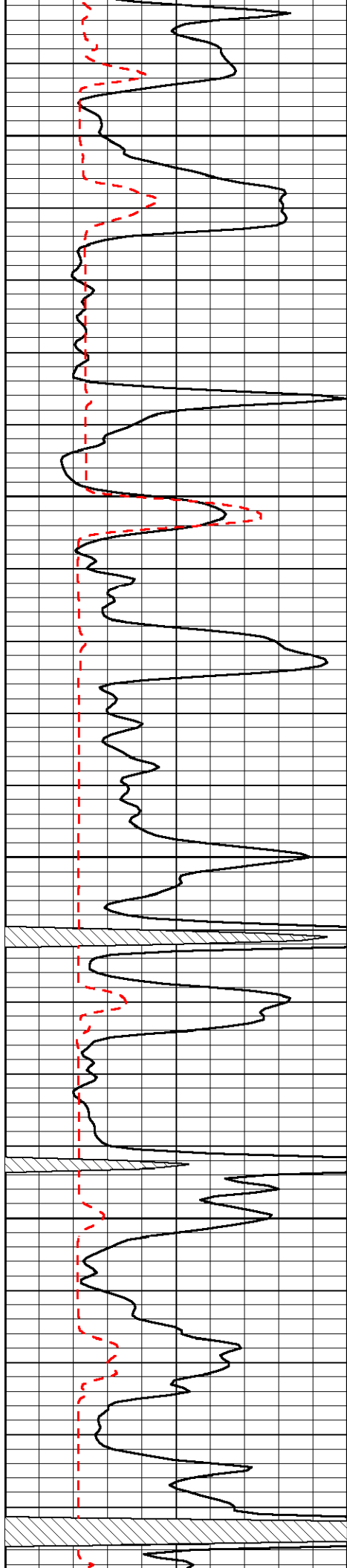


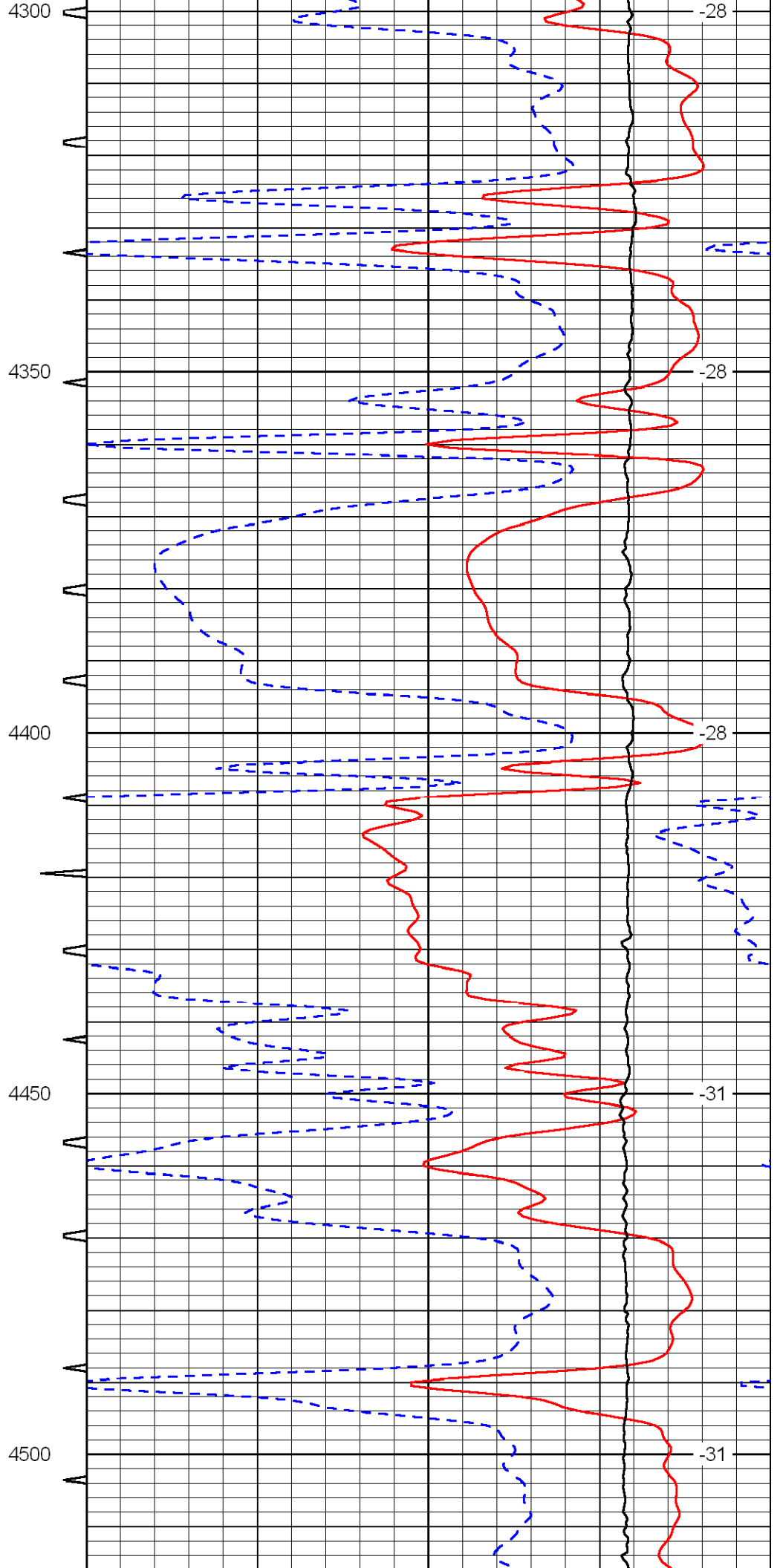
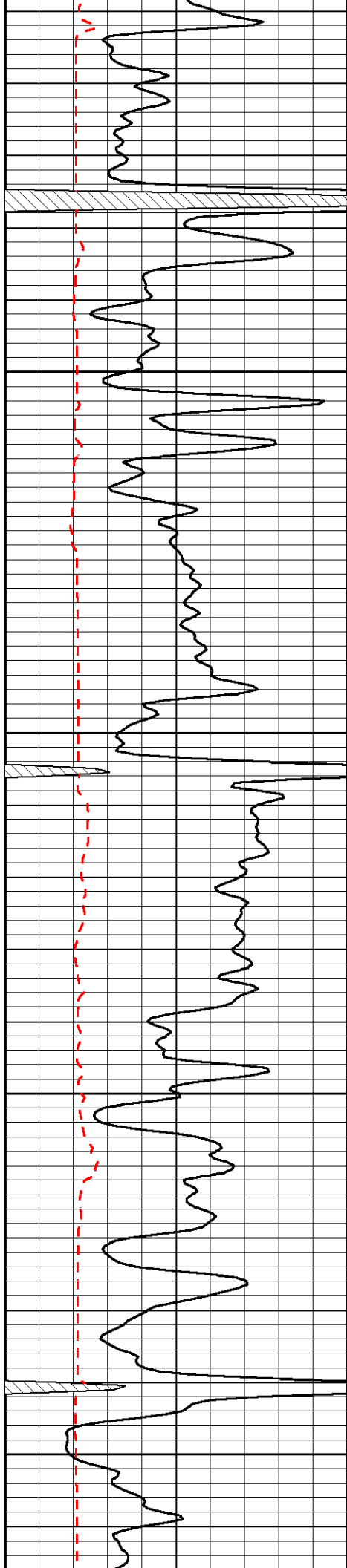


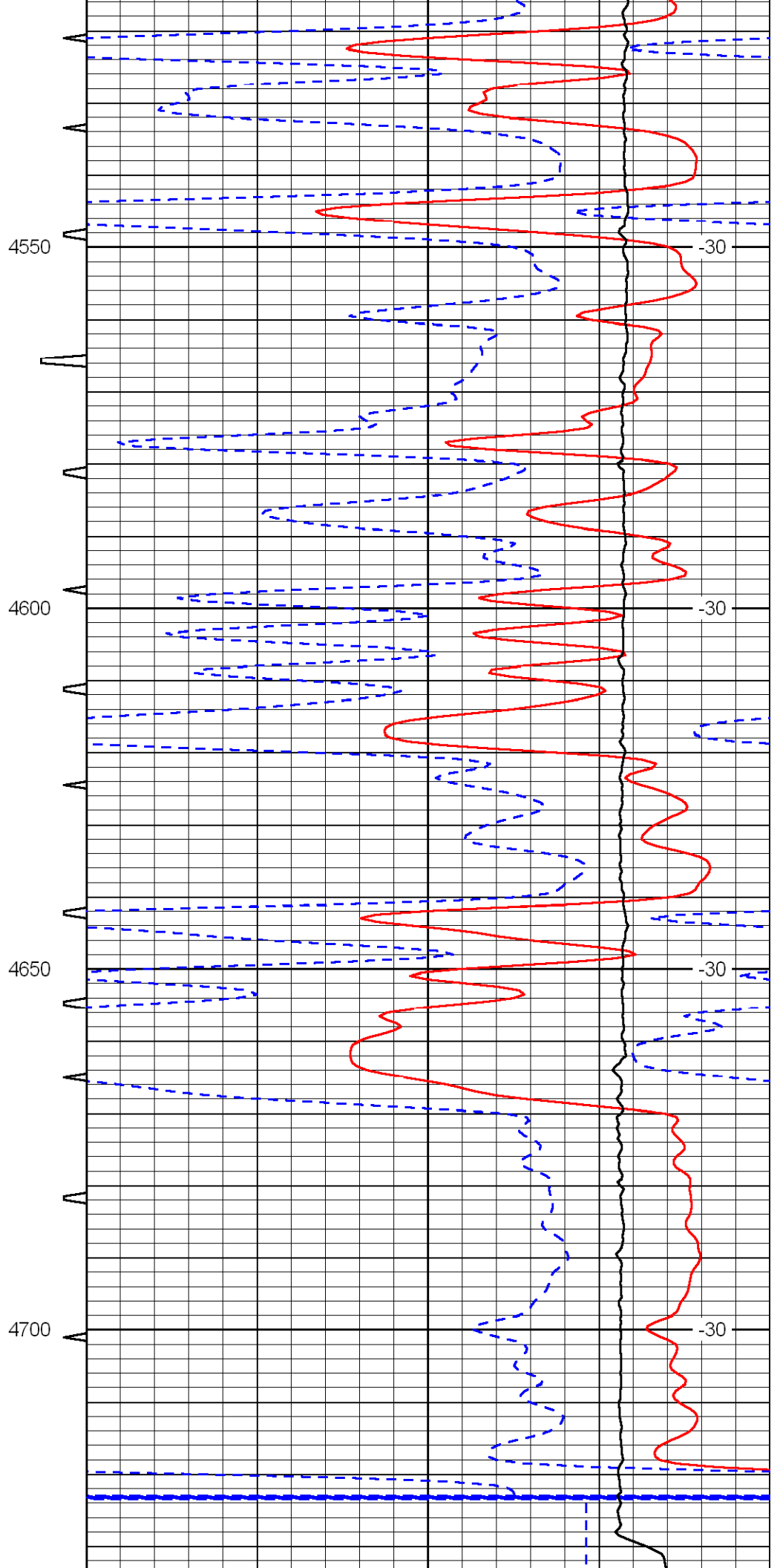
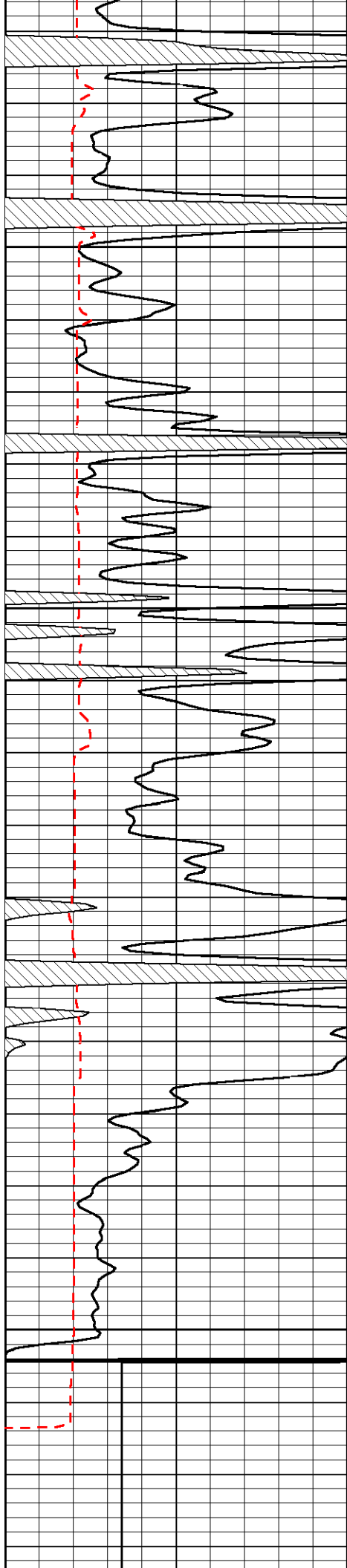












0	Gamma Ray	150	Sonic Int	140	Delta Time (usec/ft) (usec/ft)	40
150	Gamma Ray	300	5 (msec) 0	30	SPOR (pu)	-10
6	Caliper (in)	16		10000	LTEN (lb) (lb)	0
						LSPD (ft/min)