



Dual Compensated
Porosity Log

DIGITAL LOG (785) 625-3858

API No. 15-109-20,839-00-00

Company Murfin Drilling Company, Inc.
Well KWS No. 2 - 32
Field Unknown
County Logan
State Kansas

Location 1780' FNL & 1140' FWL

Sec: 32 Twp: 12 S Rge: 32 W

Other Services
DIL
MEL/BHCS

Permanent Datum Ground Level Elevation 3070
Log Measured From Kelly Bushing 10 Ft. Above Perm. Datum
Drilling Measured From Kelly Bushing

Elevation
K.B. 3080
D.F.
G.L. 3070

Date 5/16/2009

Run Number One

Type Log CNL / CDL

Depth Driller 4730

Depth Logger 4729

Bottom Logged Interval 4708

Top Logged Interval 3700

Type Fluid In Hole Chemical

Salinity, PPM CL 7,900

Density 9.2

Level Full

Max. Rec. Temp. F 123

Operating Rig Time 5 Hours

Equipment -- Location 15 Hays

Recorded By B. Becker

Witnessed By Jeff Christian

Run No	Bit	Borehole Record		Casing Record	
		From	To	From	To
1	12.25	00	216	8.625	24#
2	7.875	216	4730		

<<< Fold Here >>>

All interpretations are opinions based on inferences from electrical or other measurements and we cannot and do not guarantee the accuracy or correctness of any interpretation, and we shall not, except in the case of gross or willful negligence on our part, be liable or responsible for any loss, costs, damages, or expenses incurred or sustained by anyone resulting from any interpretation made by any of our officers, agents or employees. These interpretations are also subject to our general terms and conditions set out in our current Price Schedule.

Comments

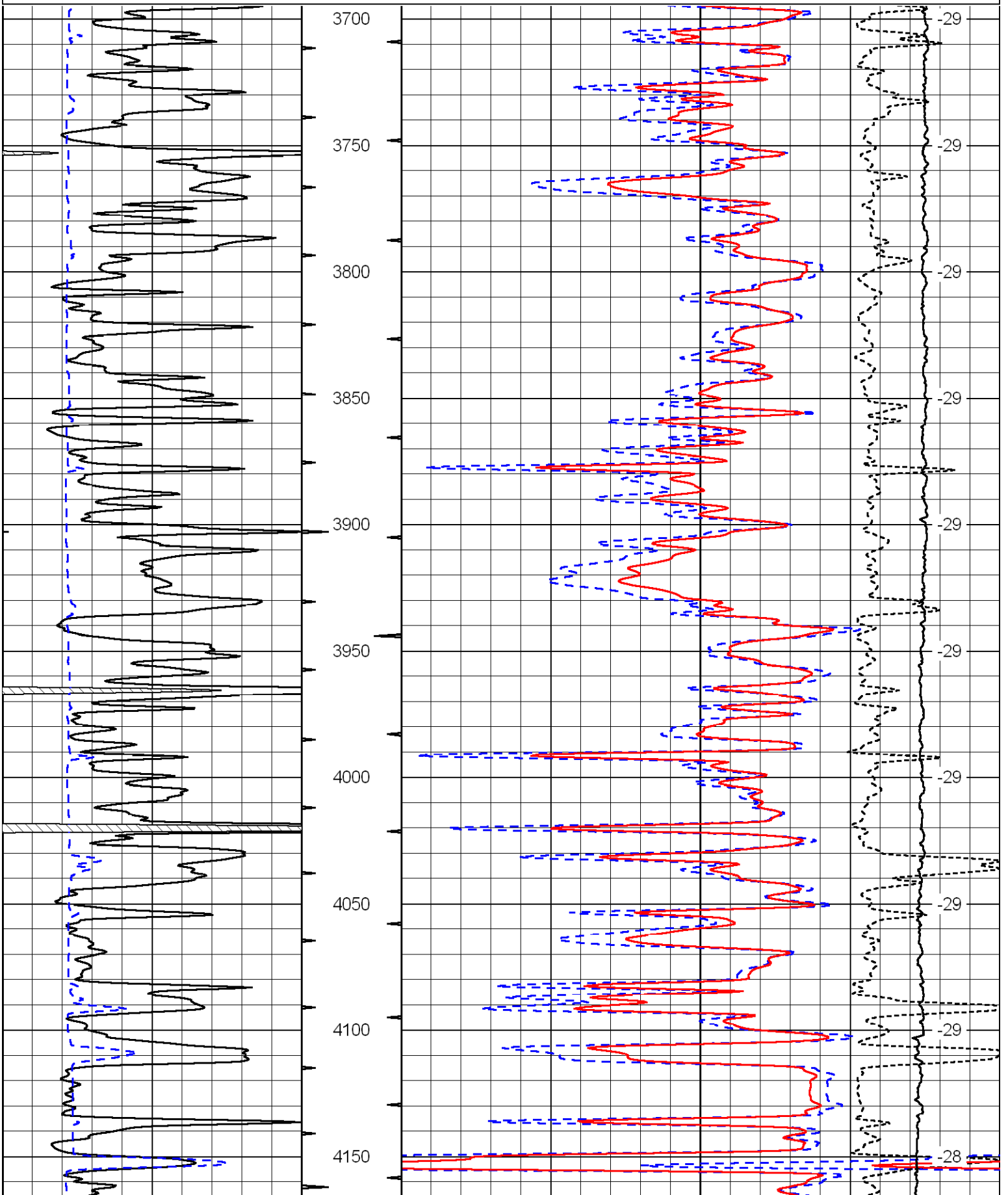
Thank you for using Log-Tech, Inc.
(785) 625-3858

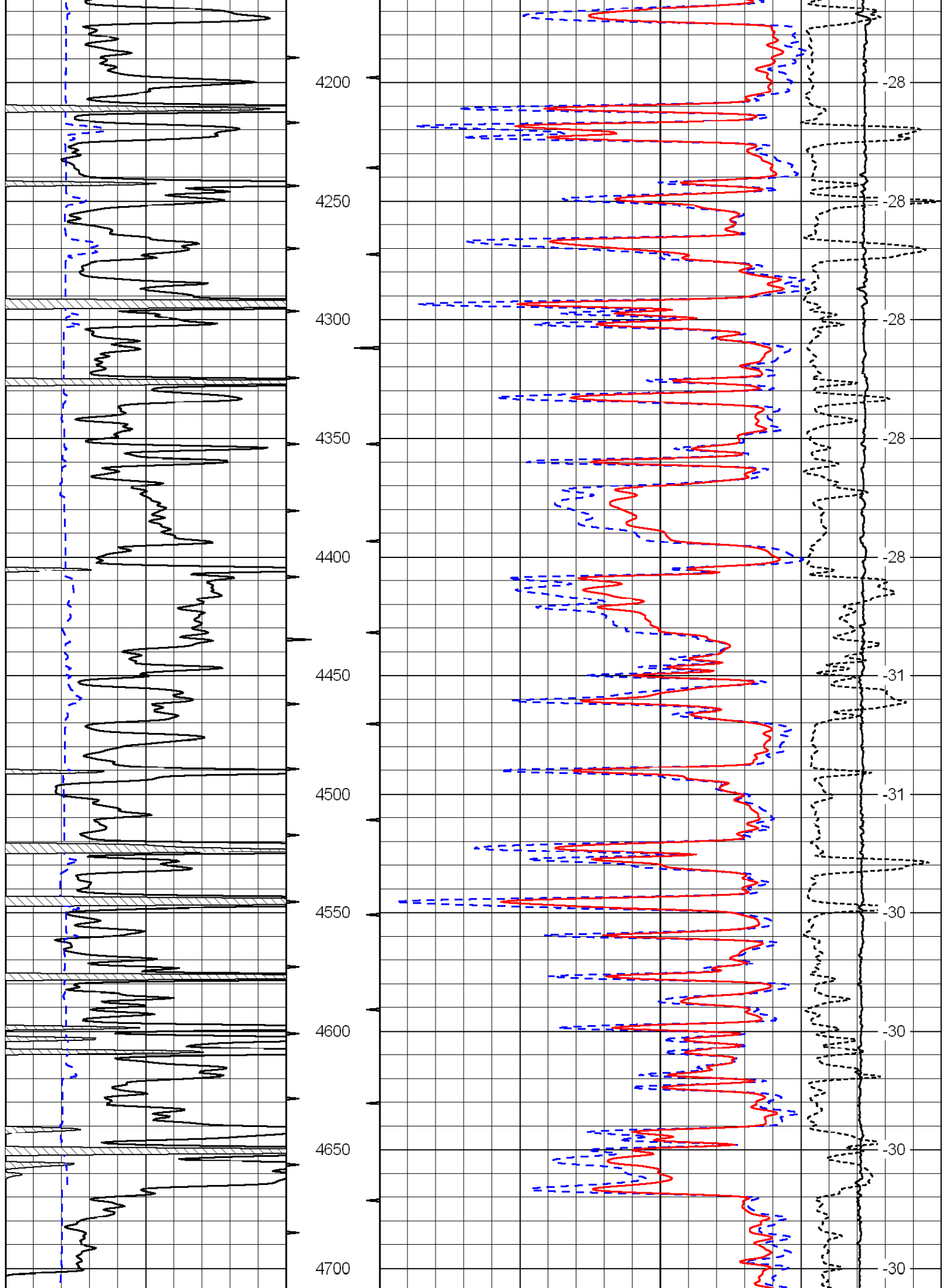
Oakley, Ks; 11 South; 3 West; 1/2 North; East into

Database File: c:\warrior\data\murfin_kws no. 2 - 32\murfinhd.db
 Dataset Pathname: DIL\murfstk
 Presentation Format: cdl
 Dataset Creation: Sat May 16 10:25:39 2009
 Charted by: Depth in Feet scaled 1:600

0	Gamma Ray	150
6	Caliper (in)	16

30	Compensated Density (pu)	-10
2	Bulk Density (g/cc)	3
15000	Line Tension (lb)	0
-0.25	Correction (g/cc)	0.25
		LSPD (ft/min)





0	Gamma Ray	150
6	Caliper (in)	16

30	Compensated Density (pu)	-10
2	Bulk Density (g/cc)	3
15000	Line Tension (lb)	0
-0.25	Correction (g/cc)	0.25
		LSPD (ft/min)

Database File: c:\warrior\data\murfin_kws no. 2 - 32\murfinhd.db
 Dataset Pathname: DIL/murfstk
 Presentation Format: cndlspec
 Dataset Creation: Sat May 16 10:25:39 2009
 Charted by: Depth in Feet scaled 1:240

0	Gamma Ray	150
6	Caliper (in)	16

30	Compensated Neutron (Limestone) (pu)	-10
30	Compensated Density (2.71 ma) (pu)	-10
15000	Line Tension (lb)	0
-0.25	Correction (g/cc)	0.25
		LSPD (ft/min)

