



**SUPERIOR**  
**Hays,**  
**Kansas**

**COMPENSATED**  
**DENSITY/NEUTRON**  
**LOG**

Company RAYMOND OIL CO, INC.  
 Well #1 KNOPP  
 Field WILDCAT  
 County LOGAN  
 State KANSAS

Company RAYMOND OIL COMPANY, INC.  
 Well #1 KNOPP  
 Field WILDCAT  
 County LOGAN State KANSAS

Location: API # : 15-109-21013-0000  
 330' FNL & 1108' FEL  
 SEC 34 TWP 14S RGE 33W  
 Permanent Datum GROUND LEVEL Elevation 2877  
 Log Measured From KELLY BUSHING 5' A.G.L.  
 Drilling Measured From KELLY BUSHING  
 Other Services DIL  
 Elevation K.B. 2882  
 D.F. 2880  
 G.L. 2877

Date	6/23/11		
Run Number	ONE		
Depth Driller	4735		
Depth Logger	4728		
Bottom Logged Interval	4704		
Top Log Interval	3300		
Casing Driller	8 5/8" @ 261		
Casing Logger			
Bit Size	7 7/8		
Type Fluid in Hole	CHEMICAL MUD	CHLORIDES 7400 PPM	
Density / Viscosity	9.3/55		
pH / Fluid Loss	9.0/11.2		
Source of Sample	FLOWLINE		
Rim @ Meas. Temp	.35 @ 91F		
Rmf @ Meas. Temp	.26 @ 91F		
Rmc @ Meas. Temp	.42 @ 91F		
Source of Rmf / Rmc	MEASURED		
Rim @ BHT	.26 @ 122F		
Time Circulation Stopped	2 HOURS		
Time Logger on Bottom			
Maximum Recorded Temperature	122F		
Equipment Number	680		
Location	HAYS, KS.		
Recorded By	JASON CAPPELLUCCI		
Witnessed By	KIM SHOEMAKER		

<<< Fold Here >>>

All interpretations are opinions based on inferences from electrical or other measurements and we cannot and do not guarantee the accuracy or correctness of any interpretation, and we shall not, except in the case of gross or willful negligence on our part, be liable or responsible for any loss, costs, damages, or expenses incurred or sustained by anyone resulting from any interpretation made by any of our officers, agents or employees. These interpretations are also subject to our general terms and conditions set out in our current Price Schedule.

Comments

THANK YOU FOR USING SUPERIOR WELL SERVICE (785) 628-6395  
 DIRECTIONS  
 OAKLEY KS. - 23 S. TO GOLD RD. - 6 W. & N. - W. INTO

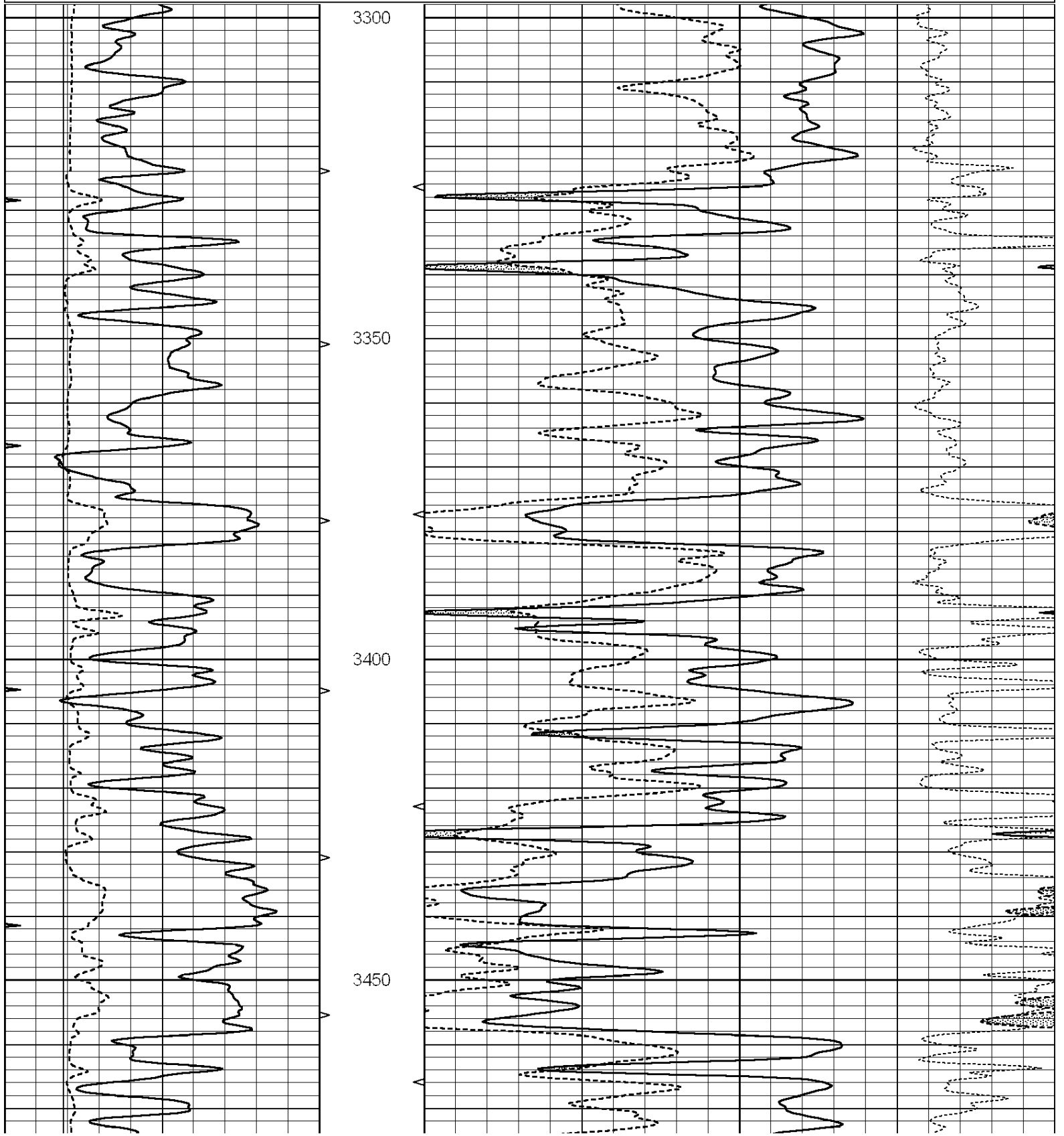


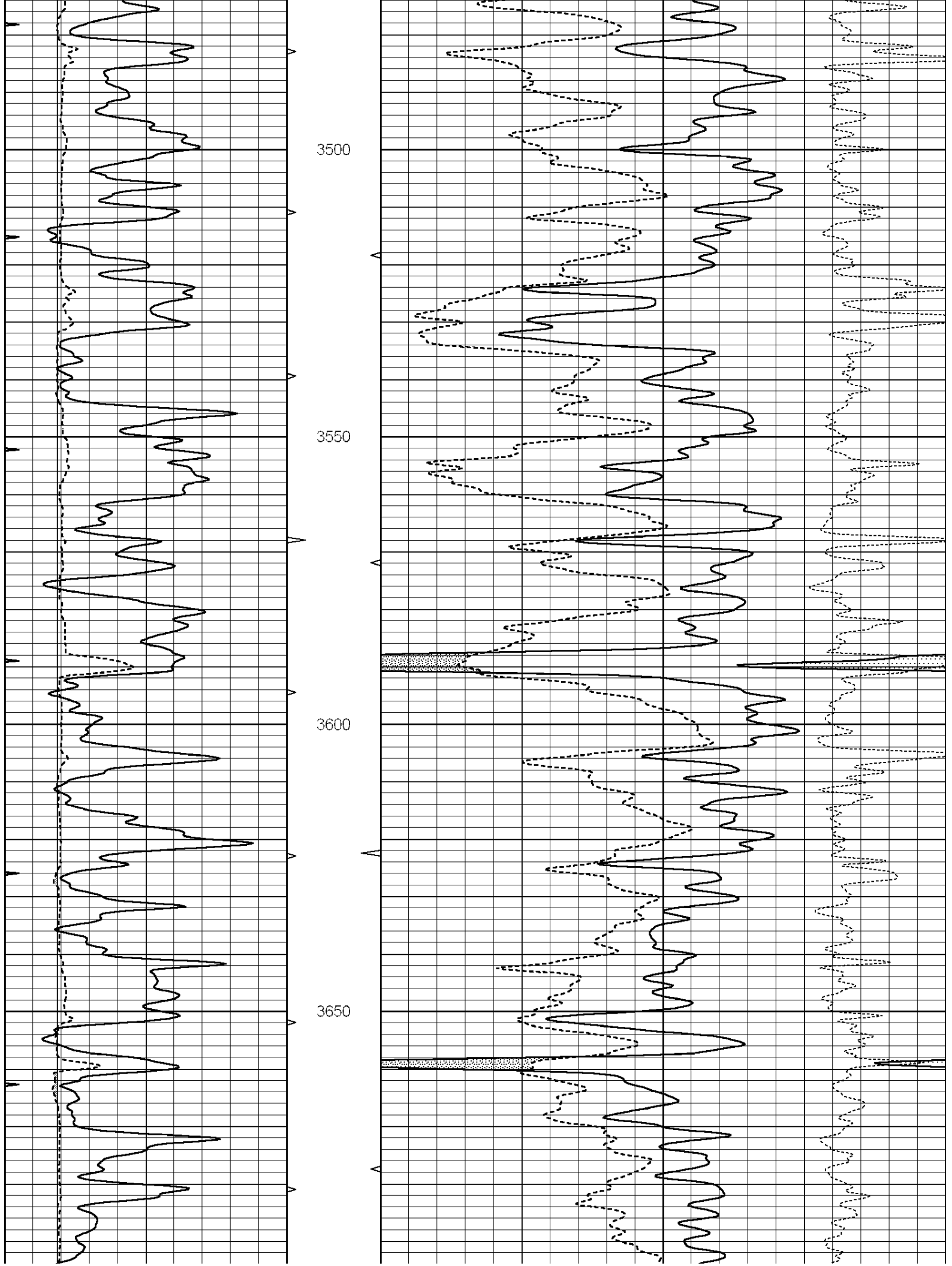
**SUPERIOR**  
**Hays,**  
**Kansas**

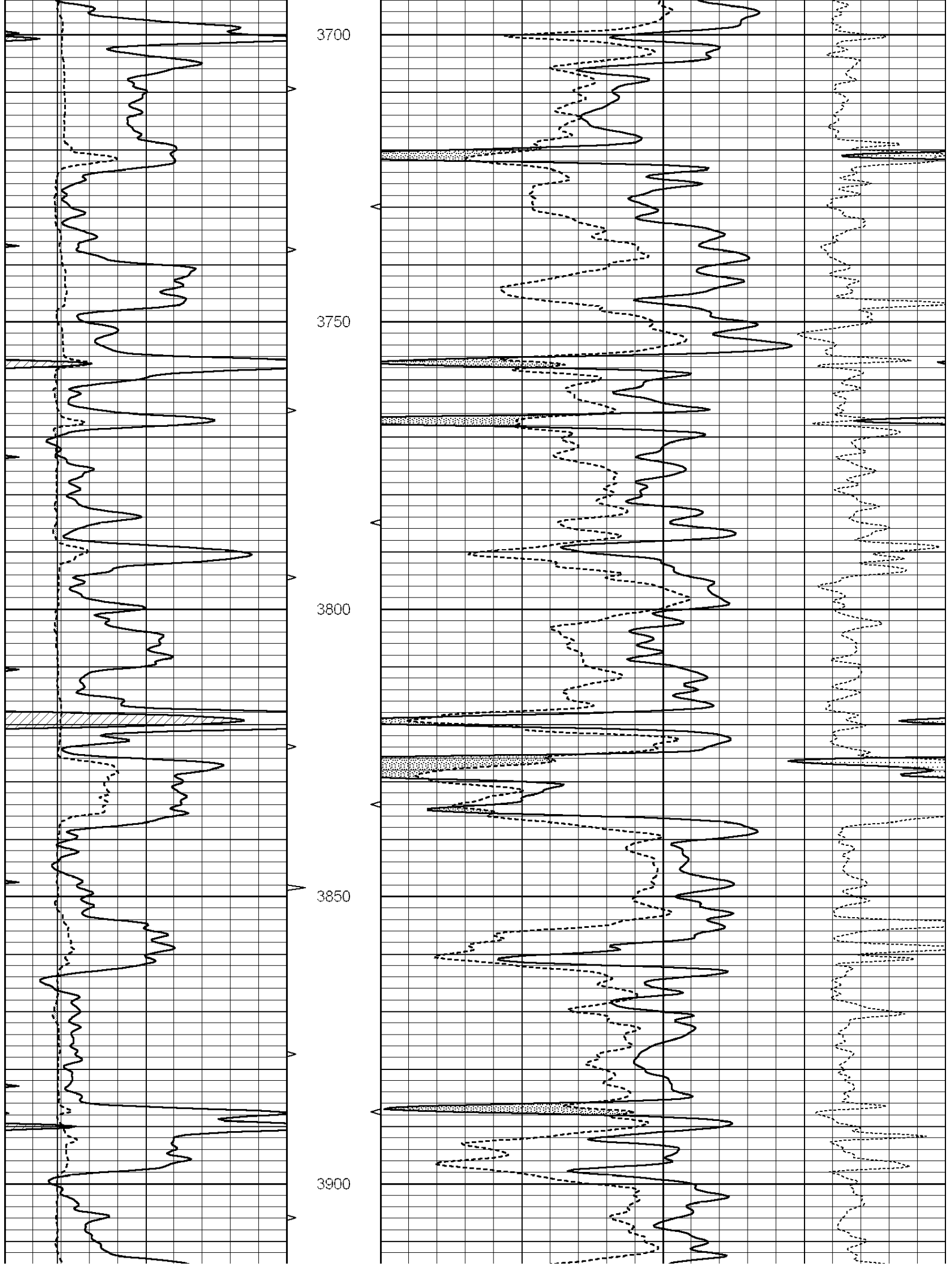
**MAIN SECTION**

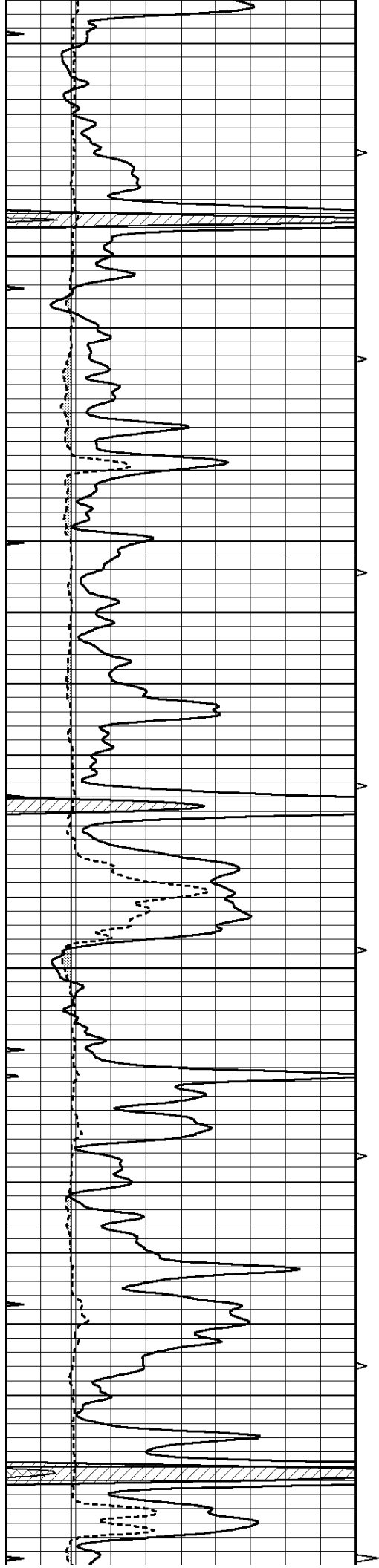
Database File: 007145ddn.db  
 Dataset Pathname: pass3.1  
 Presentation Format: \_den\_neu  
 Dataset Creation: Tue Jun 28 12:23:40 2011 by Calc Open-Cased 090629  
 Charted by: Depth in Feet scaled 1:240

0	GAMMA RAY (GAPI)	150	AVTX	30	COMPENSATED DENSITY (pu)	-10
6	CALIPER (in)	16	10 (ft3)	0 30	COMPENSATED NEUTRON (pu)	-10
0	MINMK	20	BVTX		-0.25 CORRECTION (g/cc)	0.25
			0 (ft3)	10		







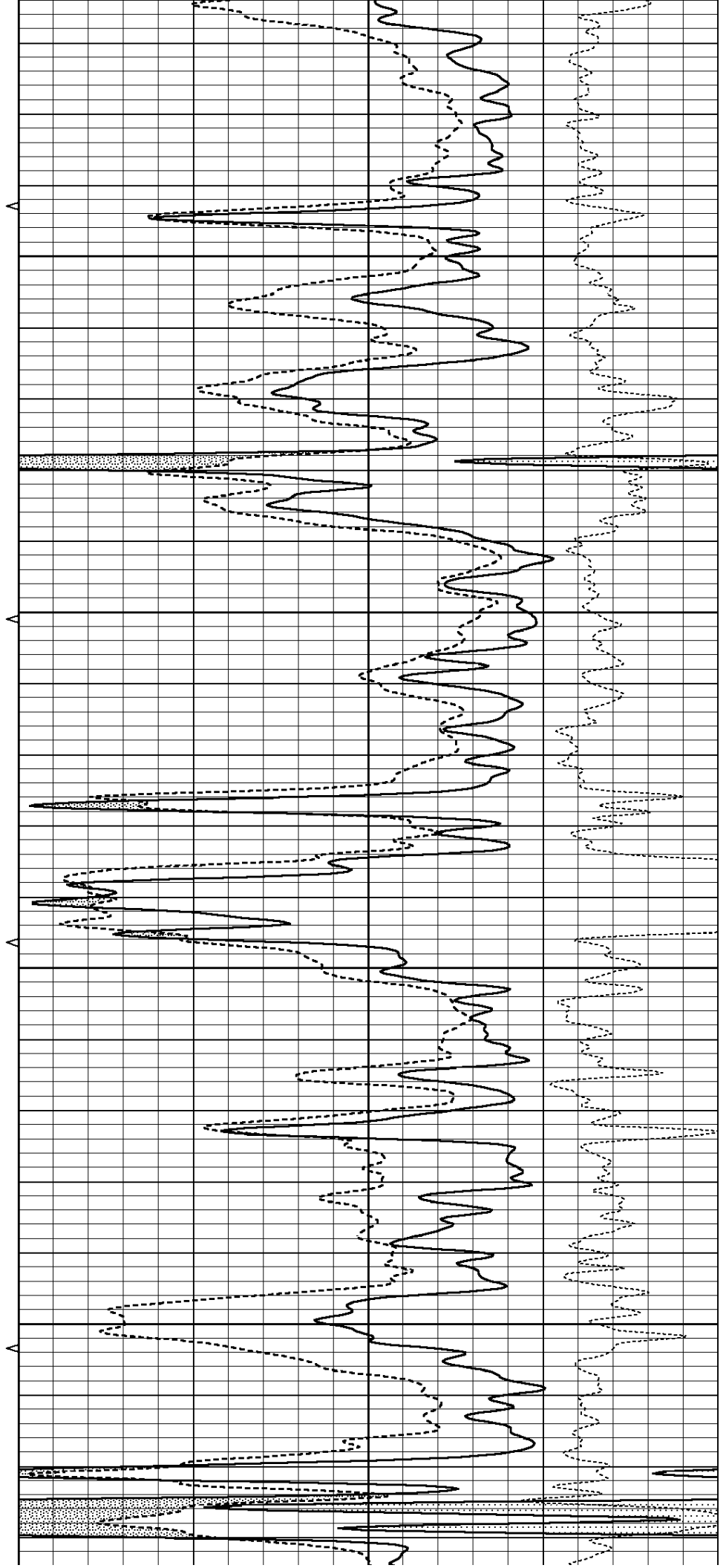


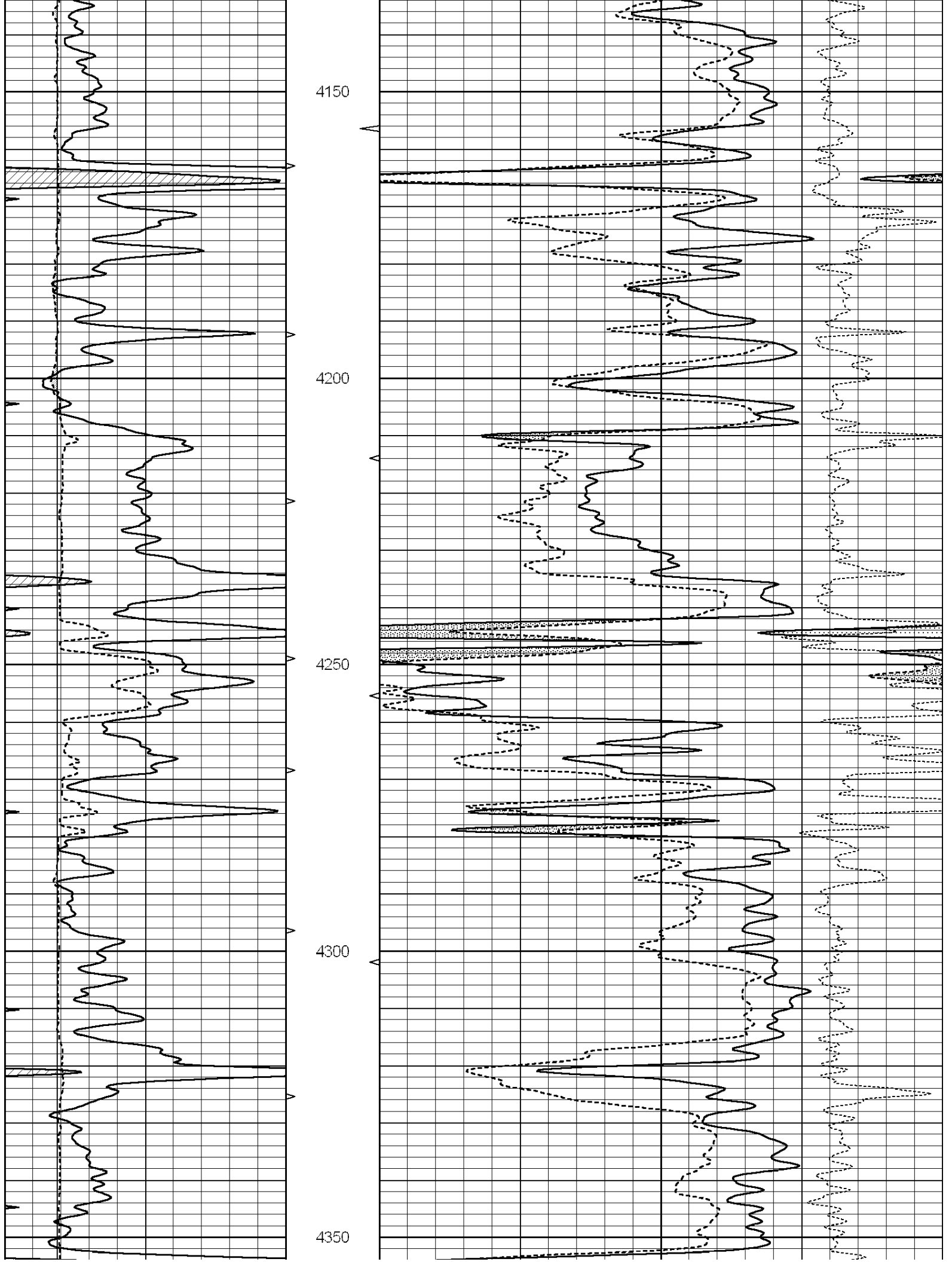
3950

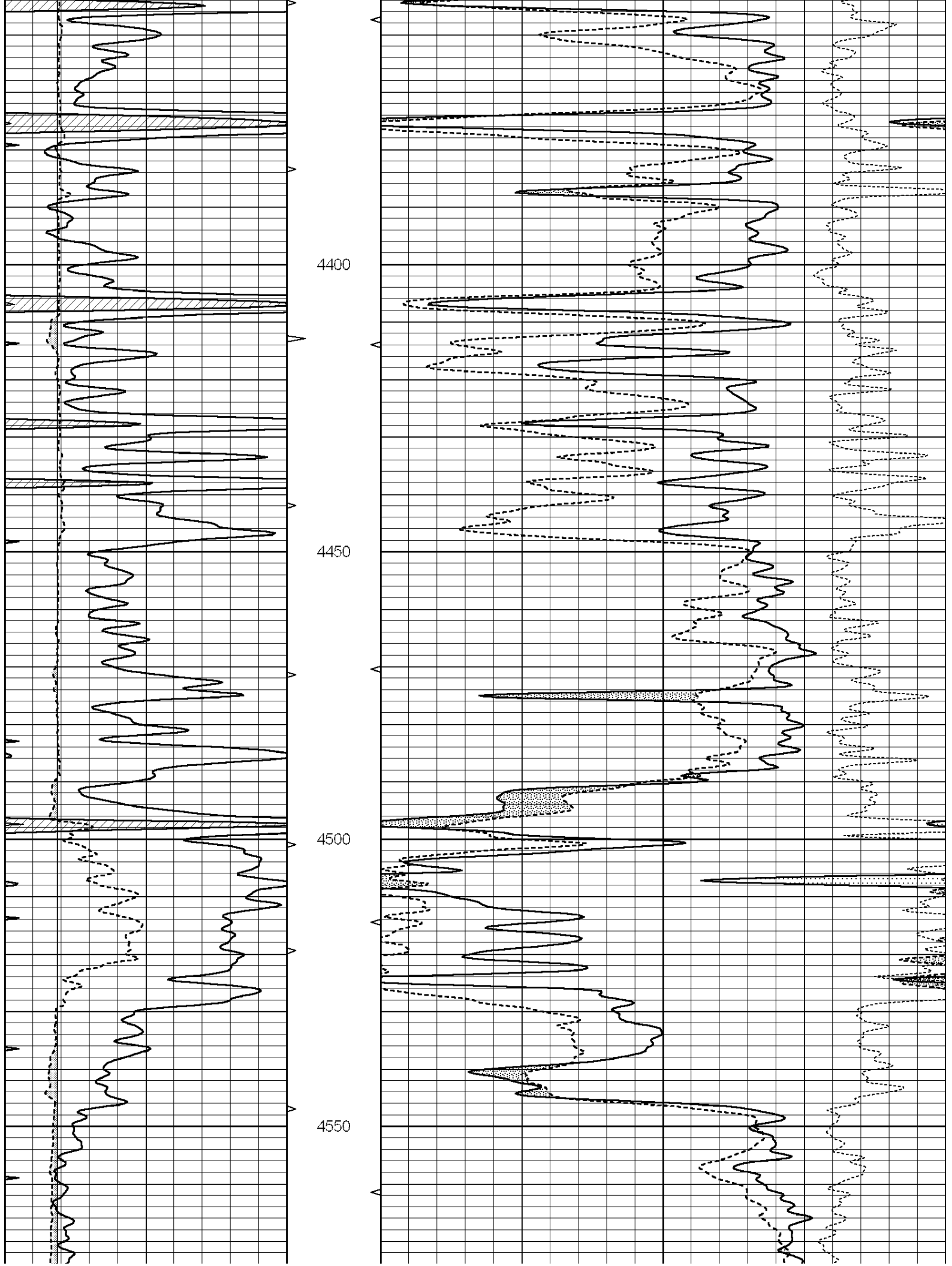
4000

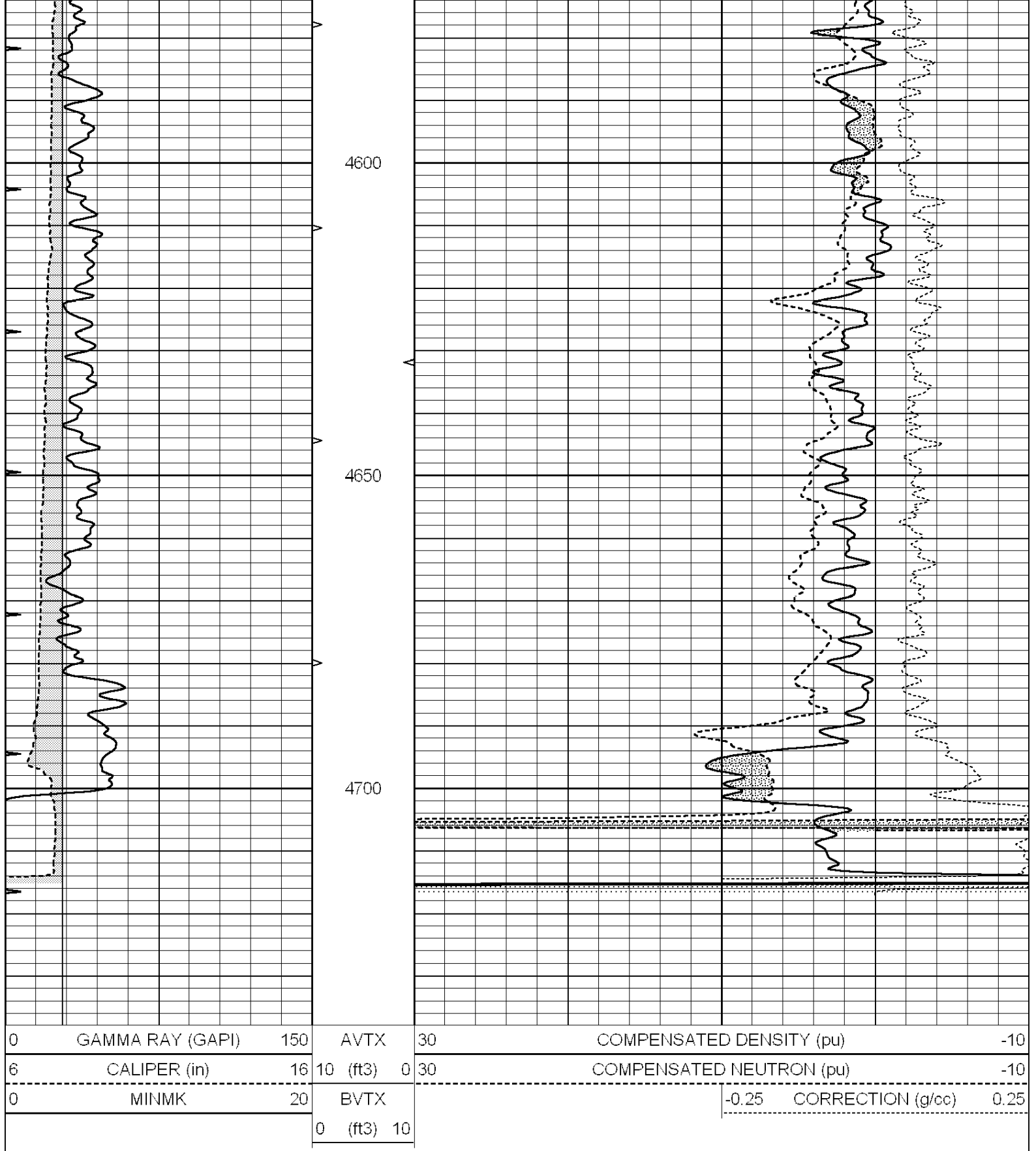
4050

4100









0	GAMMA RAY (GAPI)	150	AVTX	30	COMPENSATED DENSITY (pu)	-10		
6	CALIPER (in)	16	10 (ft3)	0	30	COMPENSATED NEUTRON (pu)	-10	
0	MINMK	20	BVTX			-0.25	CORRECTION (g/cc)	0.25
			0 (ft3)	10				