



SUPERIOR
Hays,
Kansas

**DUAL
INDUCTION
LOG**

Company RAYMOND OIL CO, INC.
Well #1 KNOPP
Field WILDCAT
County LOGAN
State KANSAS

Company RAYMOND OIL COMPANY, INC.
Well #1 KNOPP
Field WILDCAT
County LOGAN State KANSAS

Location: API # : 15-109-21013-0000
330' FNL & 1108' FEL
SEC 34 TWP 14S RGE 33W
Permanent Datum GROUND LEVEL Elevation 2877
Log Measured From KELLY BUSHING 5' A.G.L.
Drilling Measured From KELLY BUSHING
Other Services
CDL/CNL
Elevation
K.B. 2882
D.F. 2880
G.L. 2877

Date	6/23/11
Run Number	ONE
Depth Driller	4735
Depth Logger	4728
Bottom Logged Interval	4726
Top Log Interval	00
Casing Driller	8 5/8" @ 261
Casing Logger	
Bit Size	7 7/8
Type Fluid in Hole	CHEMICAL MUD
Density / Viscosity	9.3/55
pH / Fluid Loss	9.0/11.2
Source of Sample	FLOWLINE
Rim @ Meas. Temp	.35 @ 91F
Rmf @ Meas. Temp	.26 @ 91F
Rmc @ Meas. Temp	.42 @ 91F
Source of Rmf / Rmc	MEASURED
Rim @ BHT	.26 @ 122F
Time Circulation Stopped	2 HOURS
Time Logger on Bottom	
Maximum Recorded Temperature	122F
Equipment Number	680
Location	HAYS, KS.
Recorded By	JASON CAPPELLUCCI
Witnessed By	KIM SHOEMAKER

<<< Fold Here >>>

All interpretations are opinions based on inferences from electrical or other measurements and we cannot and do not guarantee the accuracy or correctness of any interpretation, and we shall not, except in the case of gross or willful negligence on our part, be liable or responsible for any loss, costs, damages, or expenses incurred or sustained by anyone resulting from any interpretation made by any of our officers, agents or employees. These interpretations are also subject to our general terms and conditions set out in our current Price Schedule.

Comments

THANK YOU FOR USING SUPERIOR WELL SERVICE (785) 628-6395
DIRECTIONS
OAKLEY KS. - 23 S. TO GOLD RD. - 6 W. & N. - W. INTO



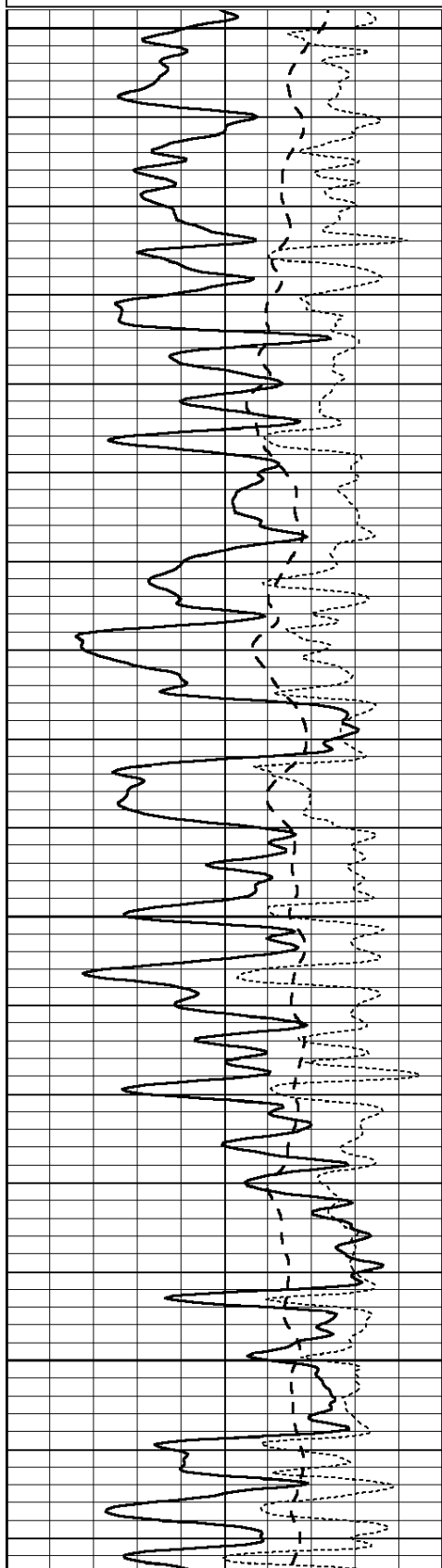
SUPERIOR
Hays,
Kansas

MAIN SECTION

Database File: 007145ddn.db
 Dataset Pathname: pass3.1
 Presentation Format: _dil
 Dataset Creation: Tue Jun 28 12:23:40 2011 by Calc Open-Cased 090629
 Charted by: Depth in Feet scaled 1:240

0	GAMMA RAY (GAPI)	150
-100	SP (mV)	100
-250	Rxo/Rt	50

0.2	SHALLOW GUARD (Ohm-m)	2000
0.2	MEDIUM INDUCTION (Ohm-m)	2000
0.2	DEEP INDUCTION (Ohm-m)	2000

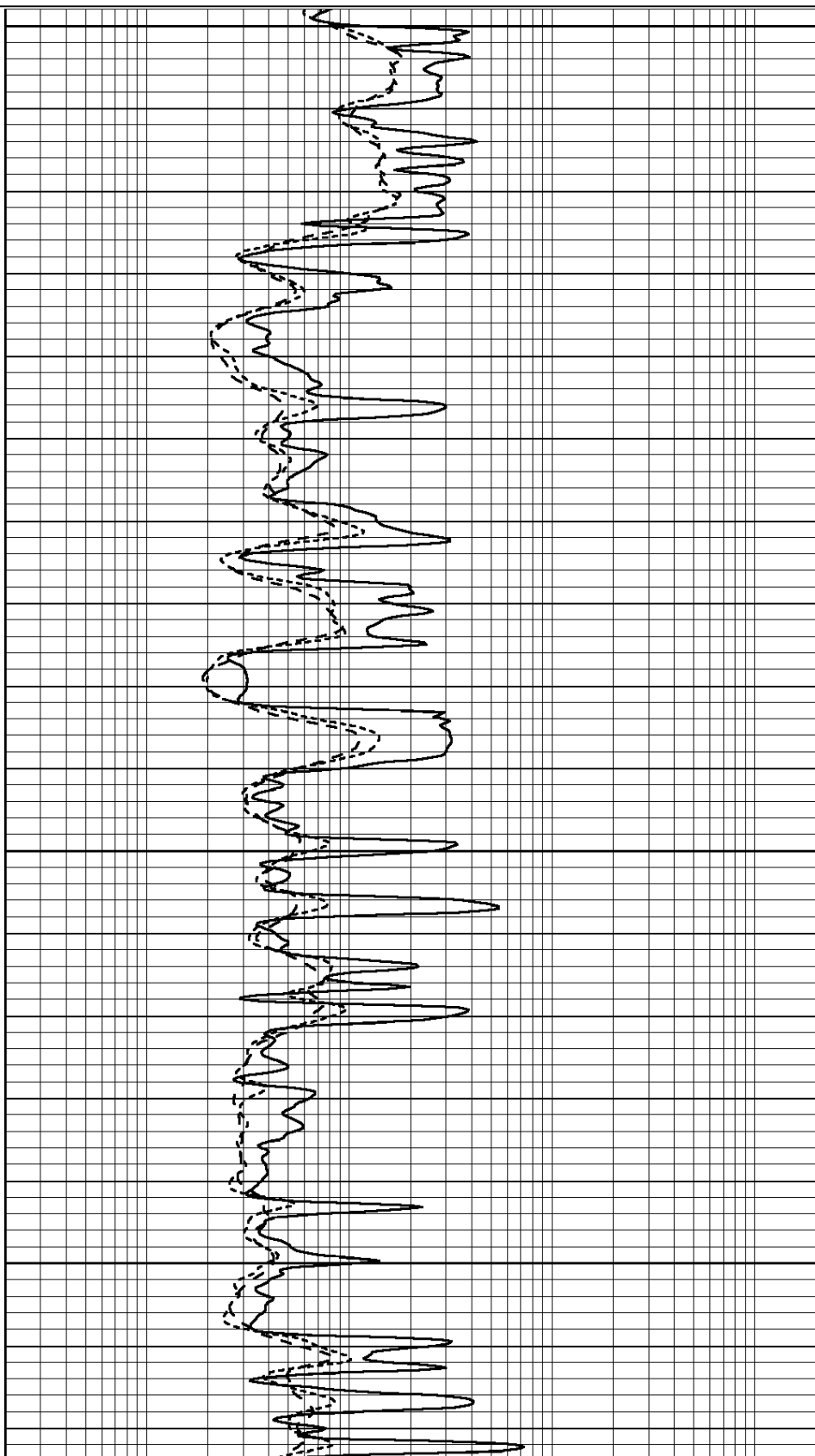


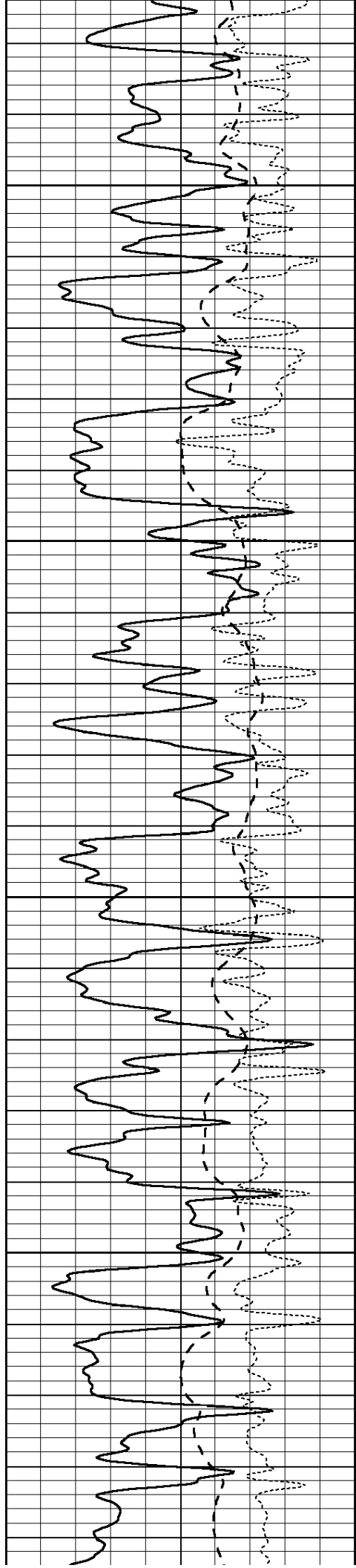
3300

3350

3400

3450



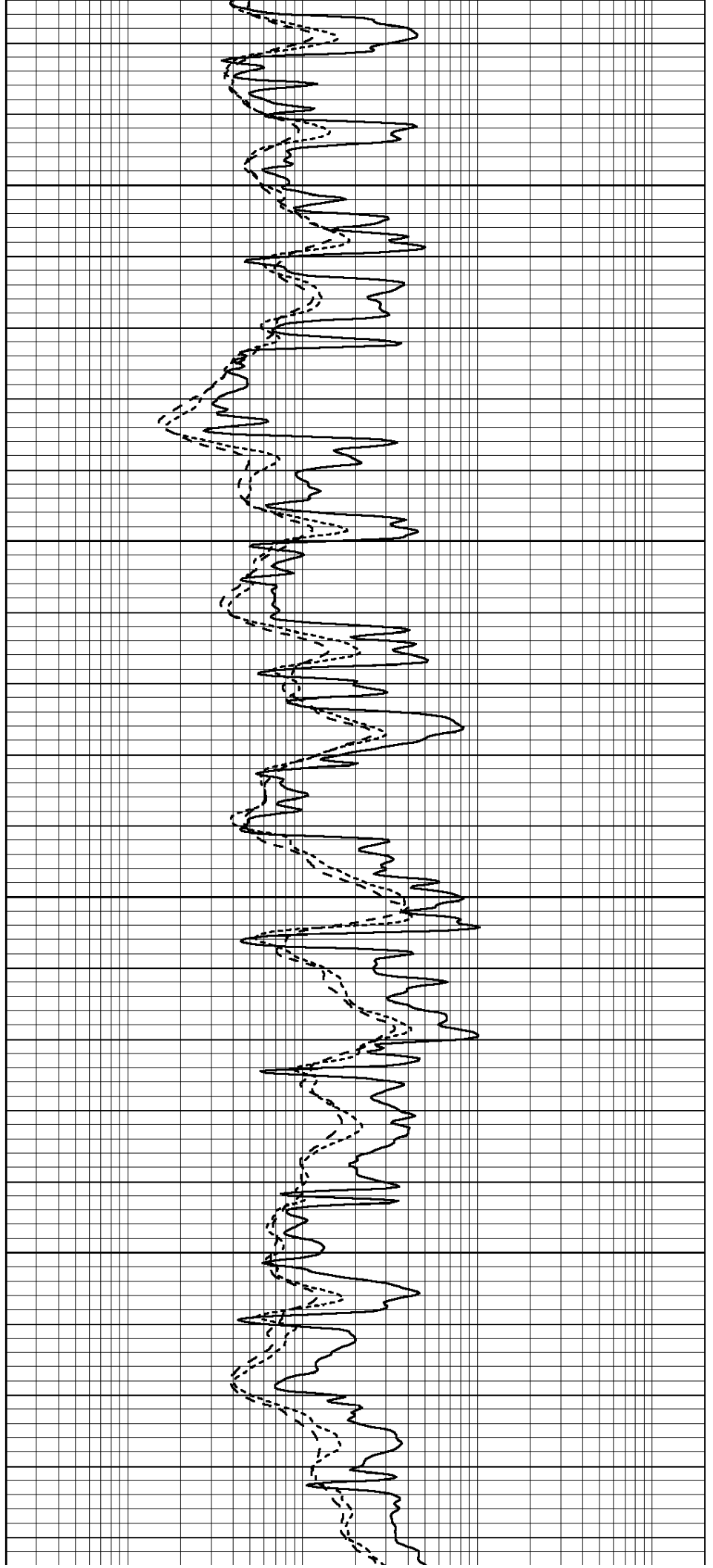


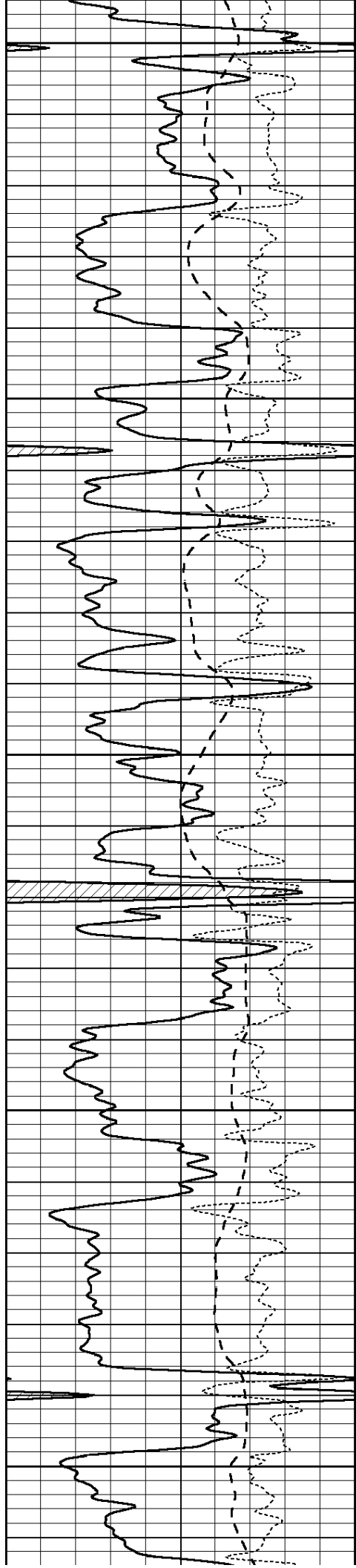
3500

3550

3600

3650





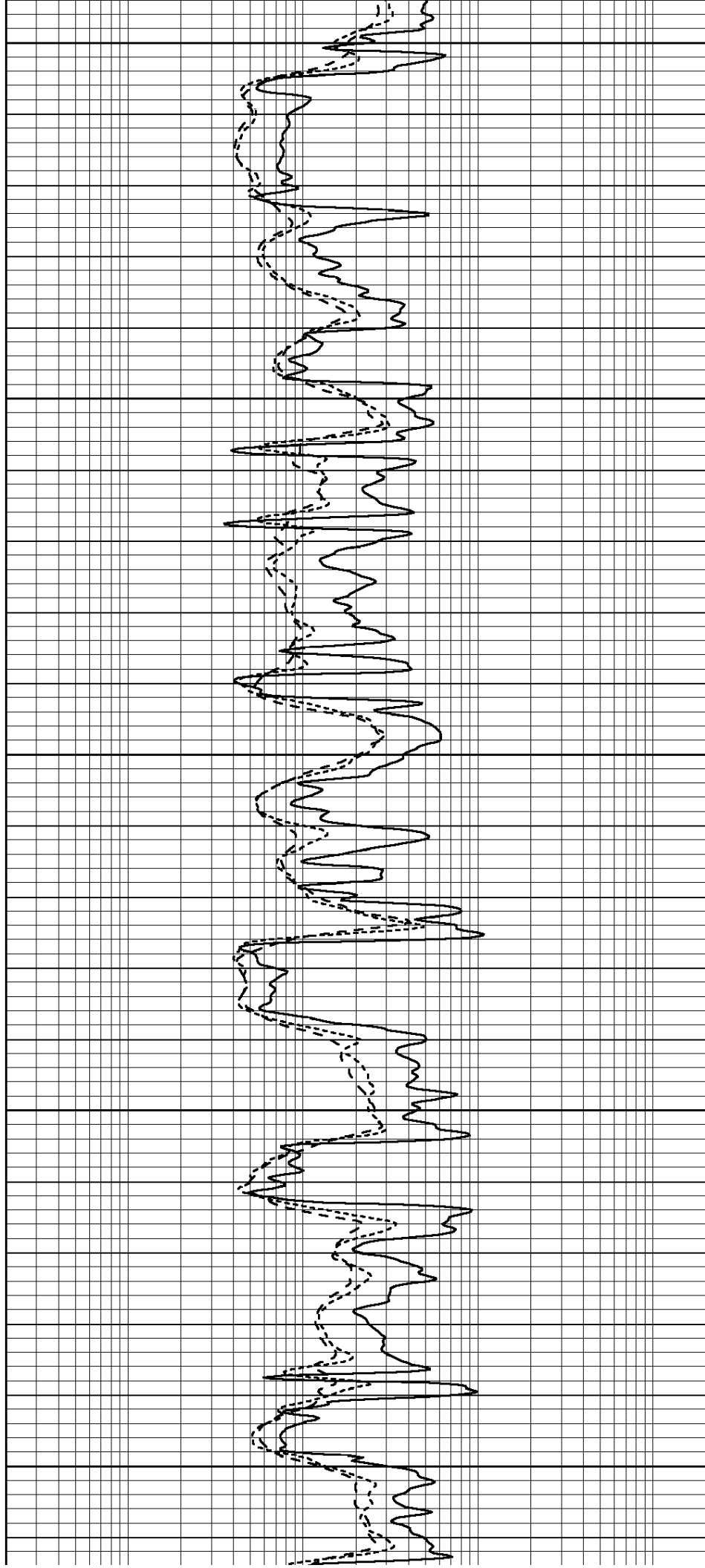
3700

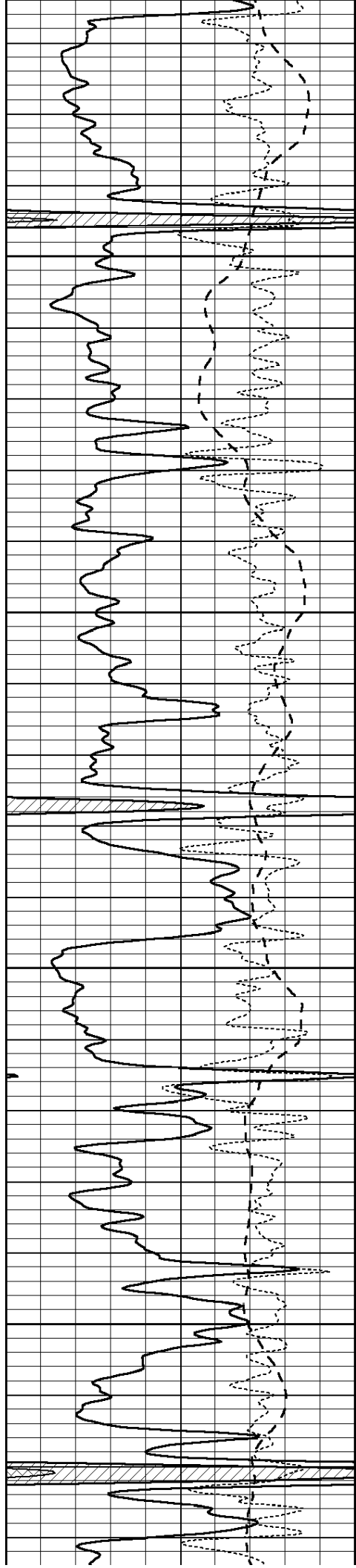
3750

3800

3850

3900



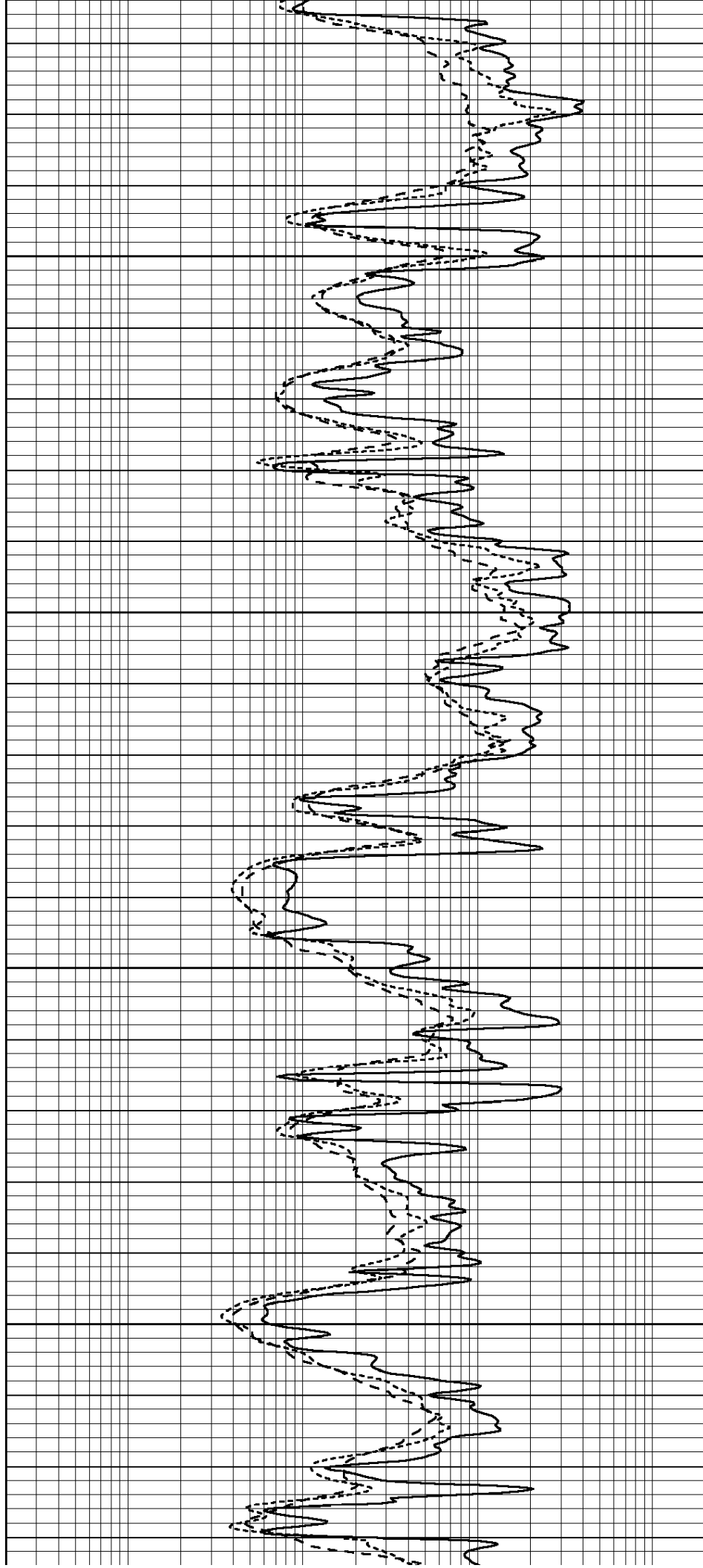


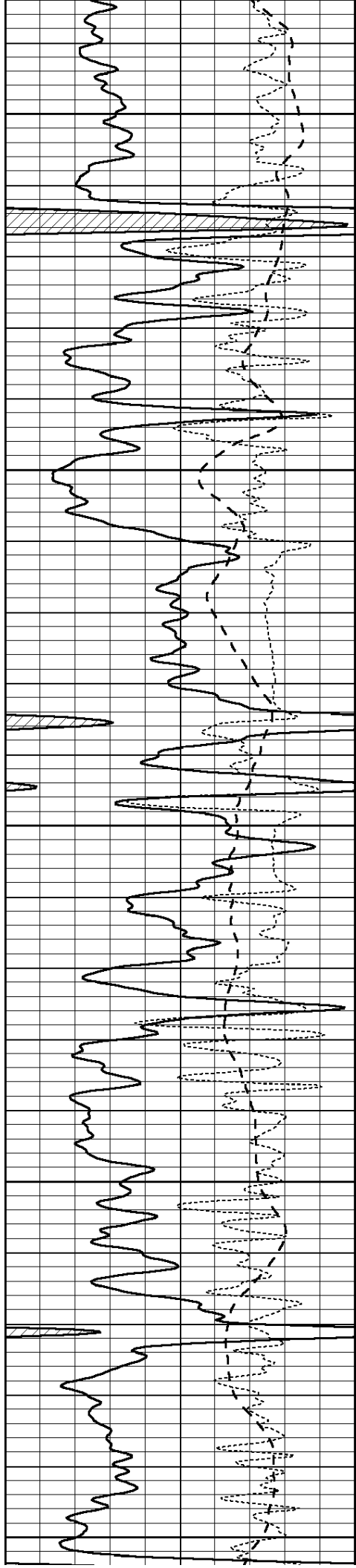
3950

4000

4050

4100





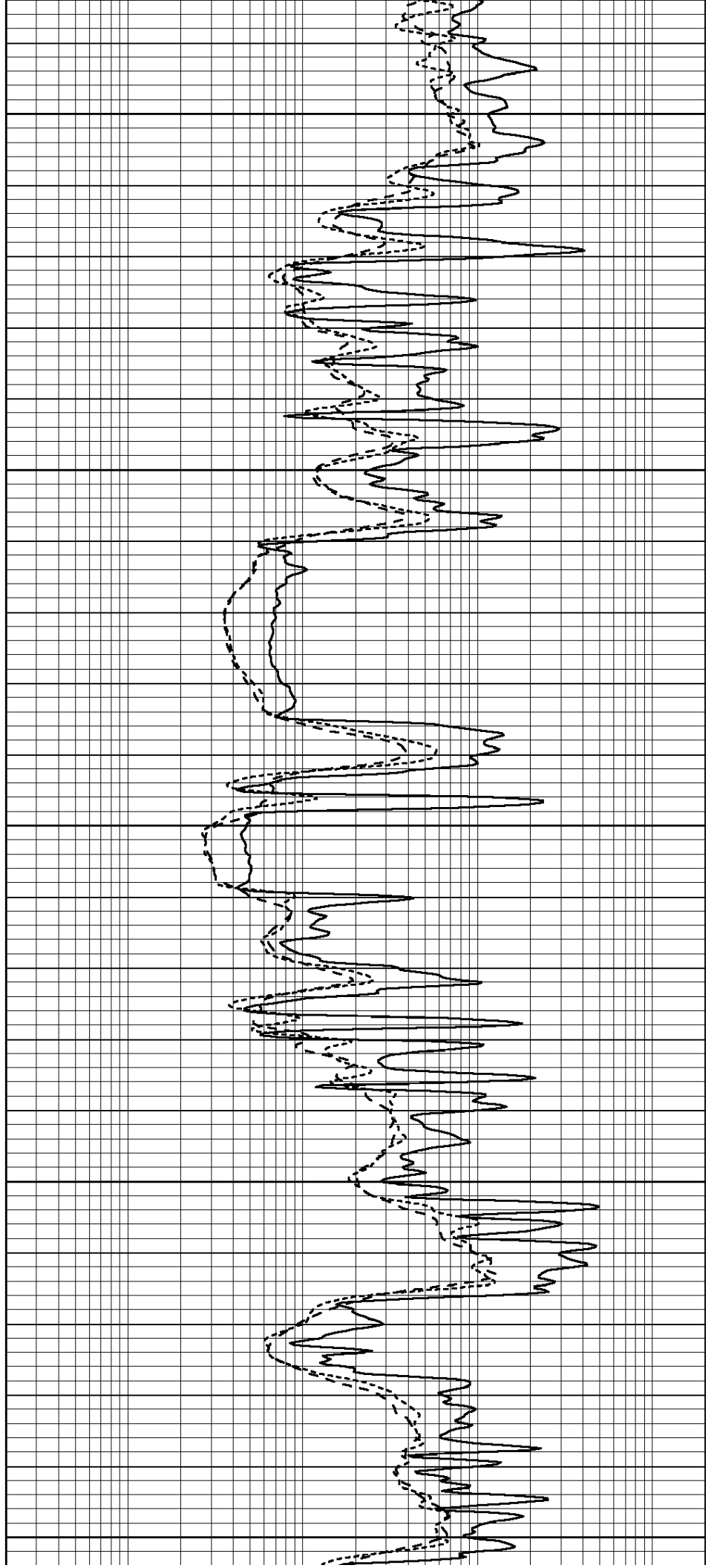
4150

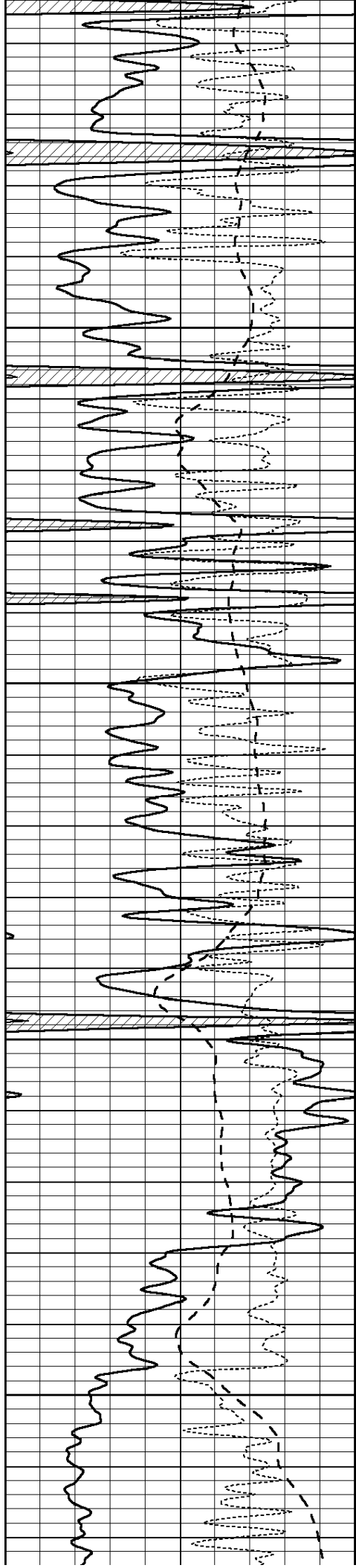
4200

4250

4300

4350



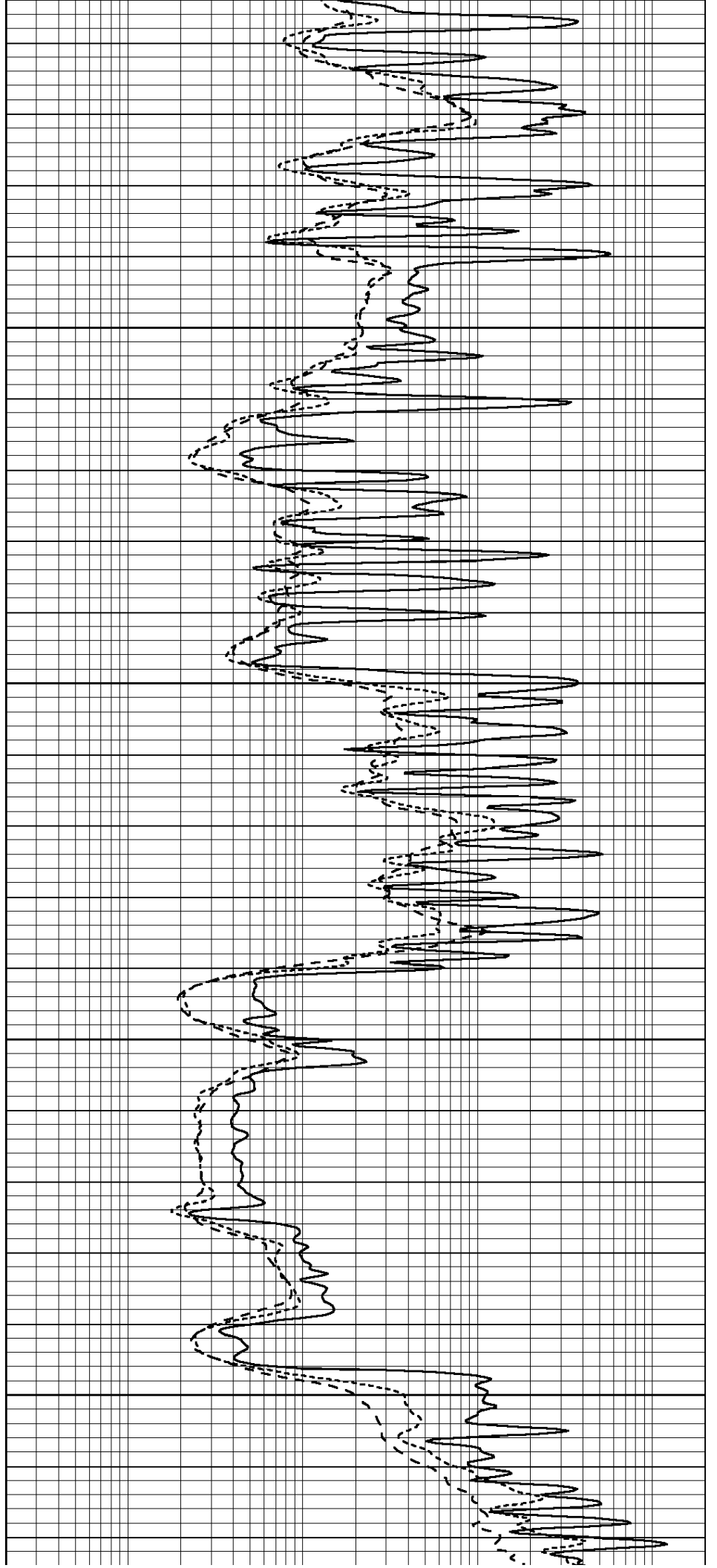


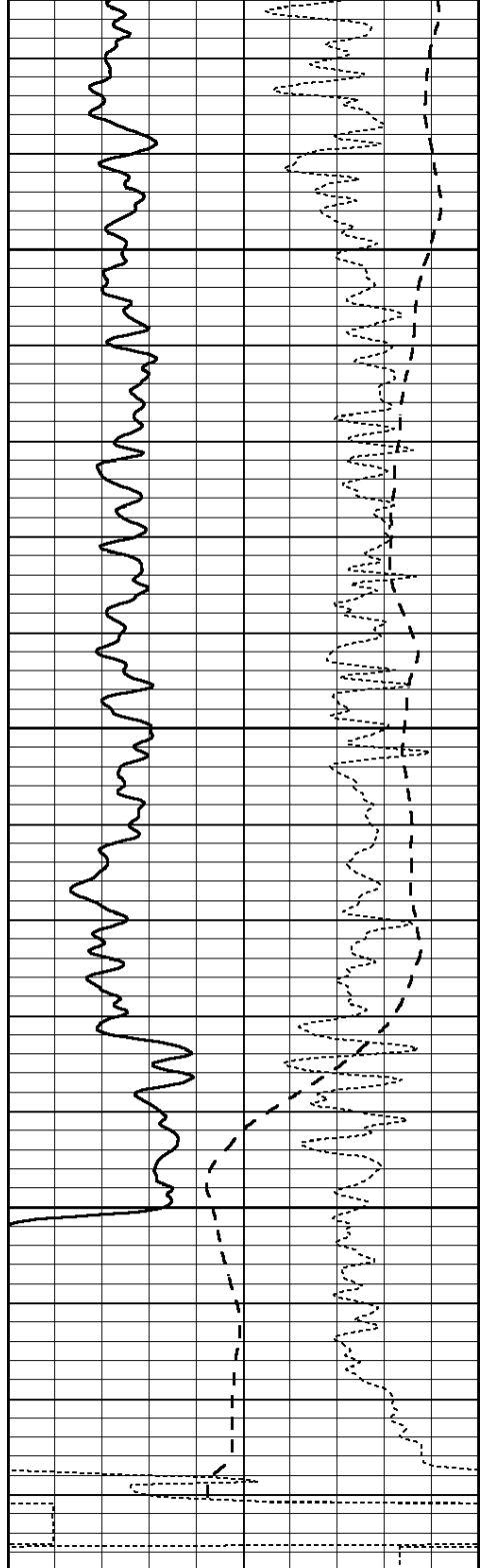
4400

4450

4500

4550



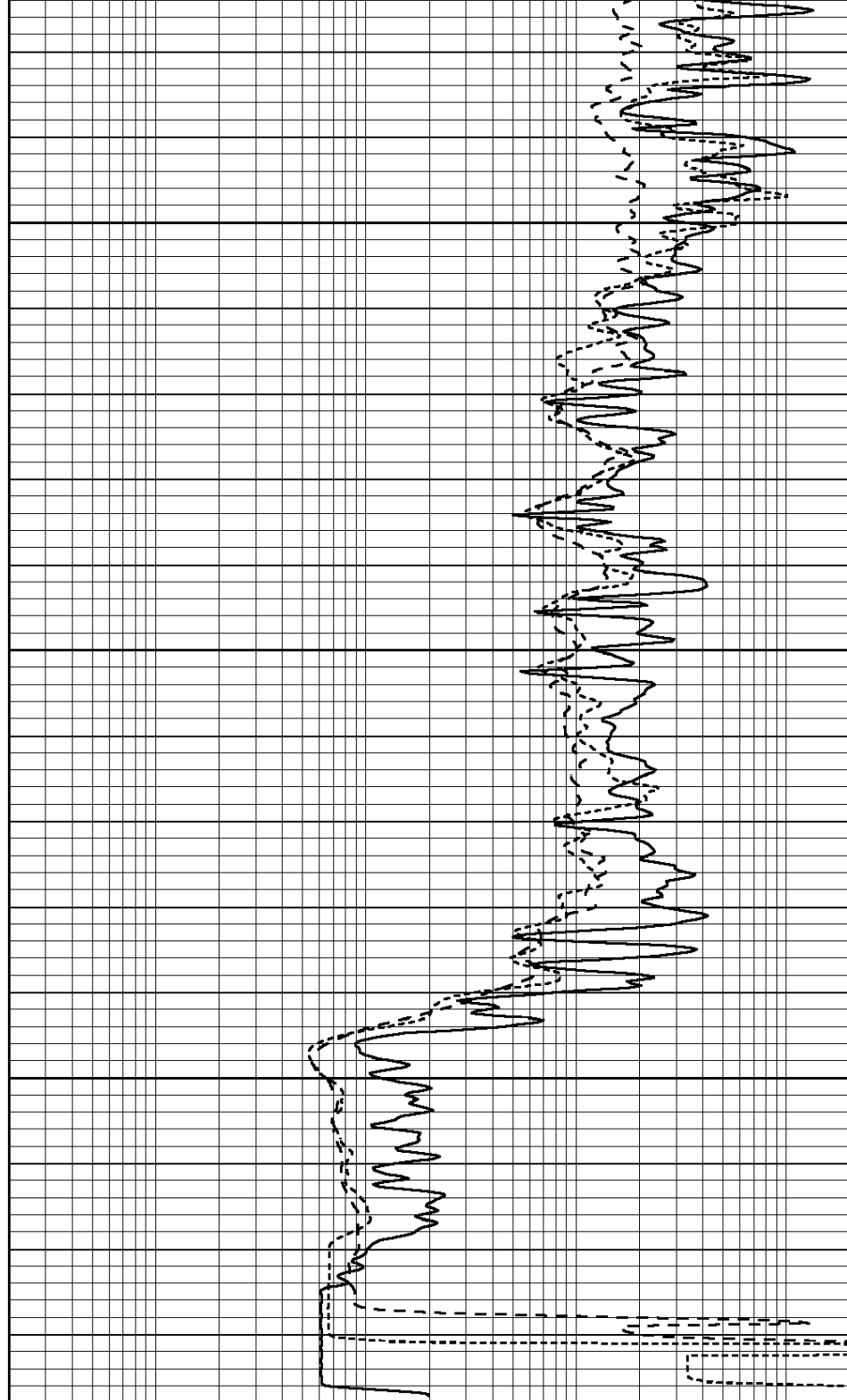


0	GAMMA RAY (GAPI)	150
-100	SP (mV)	100
-250	Rxo/Rt	50

4600

4650

4700



0.2	SHALLOW GUARD (Ohm-m)	2000
0.2	MEDIUM INDUCTION (Ohm-m)	2000
0.2	DEEP INDUCTION (Ohm-m)	2000