



Microresistivity Log

DIGITAL LOG (785) 625-3858

| | | | |
|--|--|--|----------------------------------|
| API No. 15-035-24,427-00-00 | Company Future Petroleum Company LLC | Location SE NE SE NE 3570' FSL & 85' FEL | Other Services CNL/CDL DIL |
| | Well West Maddix Unit No.3 WI | | |
| | Field Maddix North | | |
| | County Cowley | State Kansas | |
| | | Sec: 10 | Twp: 33S |
| | | | Rge: 5E |
| Permanent Datum Log Measured From Drilling Measured From | Ground Level Kelly Bushing Kelly Bushing | Elevation 1267 10 Ft. Above Perm. Datum | K.B. 1277 D.F. G.L. 1267 |

| | |
|------------------------|--------------|
| Date | 7/1/2011 |
| Run Number | Two |
| Depth Driller | 3202 |
| Depth Logger | 3203 |
| Bottom Logged Interval | 3202 |
| Top Log Interval | 200 |
| Casing Driller | 8.625 @ 213 |
| Casing Logger | 213 |
| Bit Size | 7.875 |
| Type Fluid in Hole | Chemical |
| Salinity, ppm CL | 1.100 |
| Density / Viscosity | 9.2 40 |
| pH / Fluid Loss | 9.0 10.8 |
| Source of Sample | Flowline |
| Rm @ Meas. Temp | 2.1 @ 91 |
| Rmf @ Meas. Temp | 1.58 @ 91 |
| Rmc @ Meas. Temp | 2.84 @ 91 |
| Source of Rmf / Rmc | Charts |
| Rm @ BHT | 1.74 @ 110 |
| Operating Rig Time | 5 Hours |
| Max Rec. Temp. F | 110 |
| Equipment Number | 17 |
| Location | Hays |
| Recorded By | C. Desaire |
| Witnessed By | Terry Madden |

<<< Fold Here >>>

All interpretations are opinions based on inferences from electrical or other measurements and we cannot and do not guarantee the accuracy or correctness of any interpretation, and we shall not, except in the case of gross or willful negligence on our part, be liable or responsible for any loss, costs, damages, or expenses incurred or sustained by anyone resulting from any interpretation made by any of our officers, agents or employees. These interpretations are also subject to our general terms and conditions set out in our current Price Schedule.

Comments

Thank you for using Log-Tech, Inc.
 (785) 625-3858

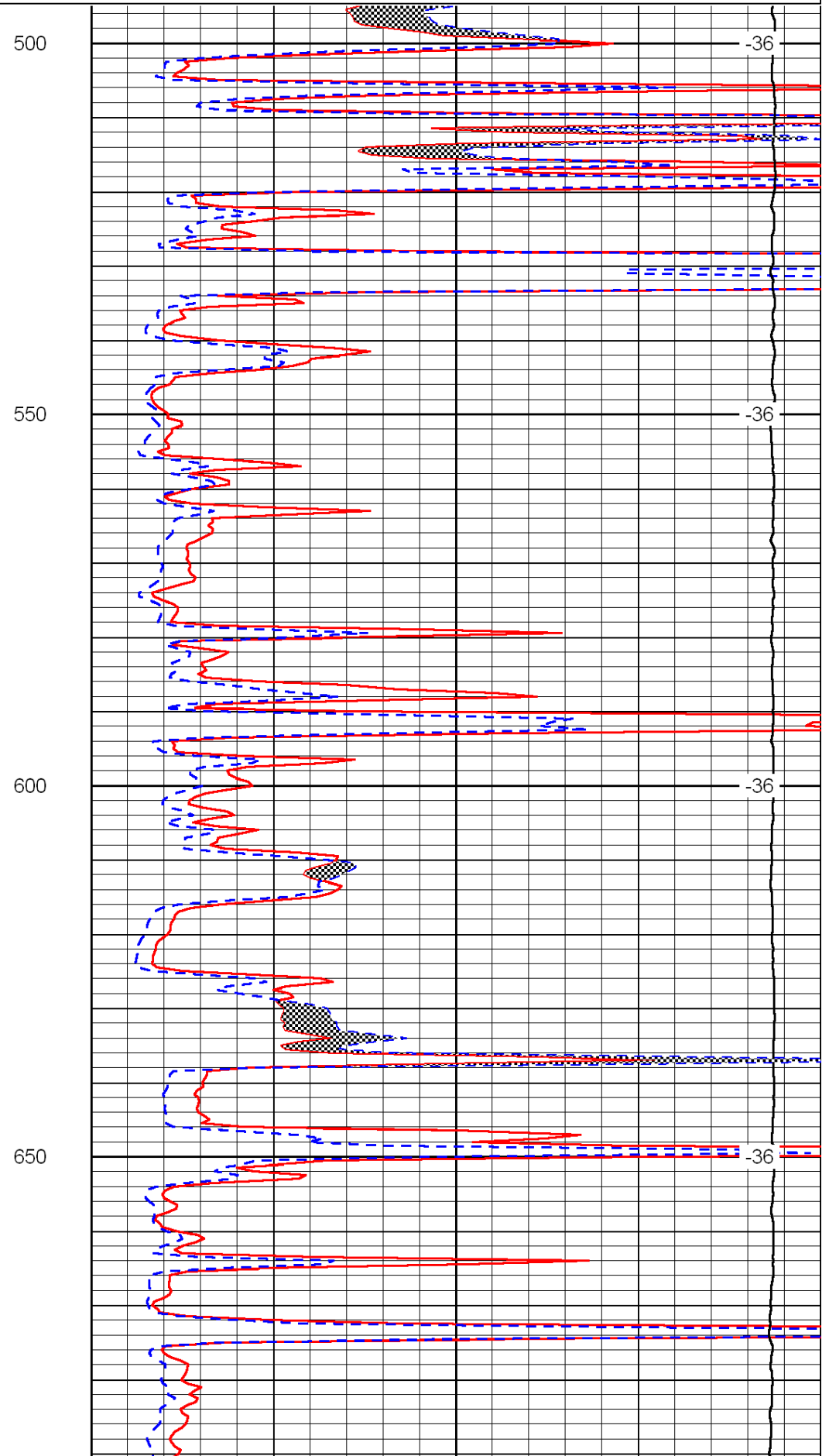
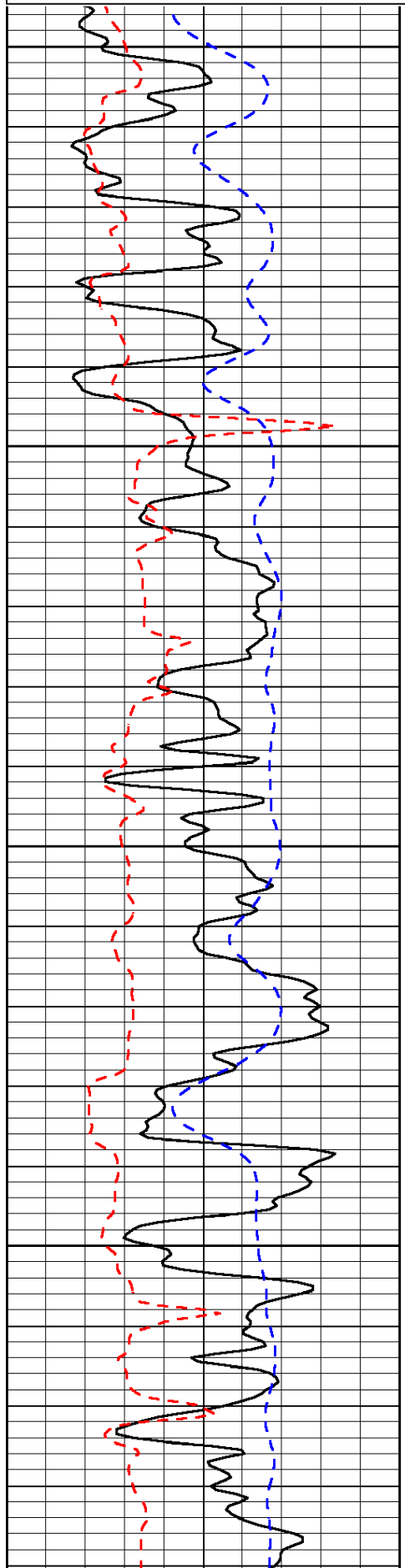
 Winfield KS,
 E to 151st Rd,
 3 S, 1 E, 1/2 S, W Into

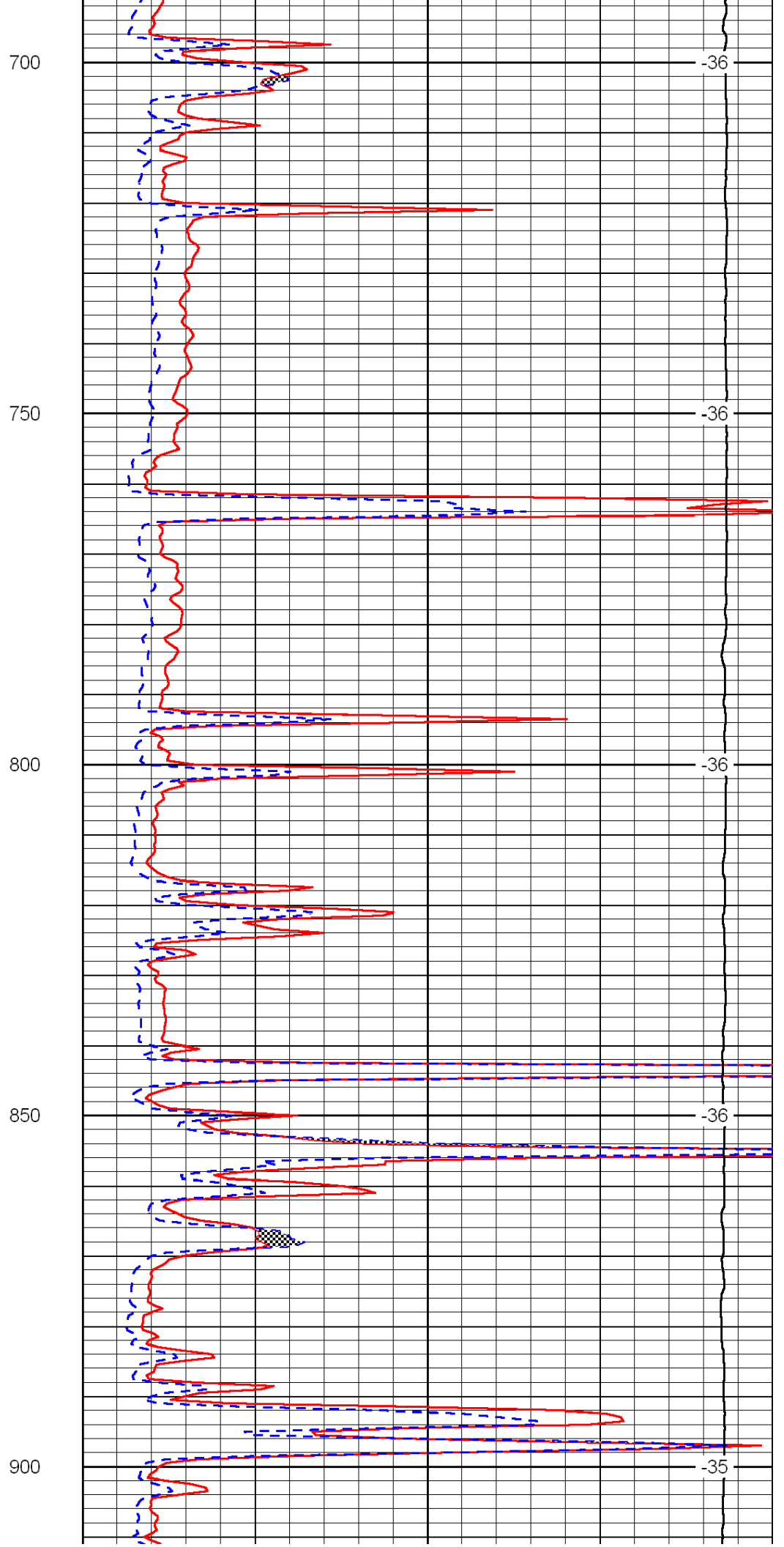
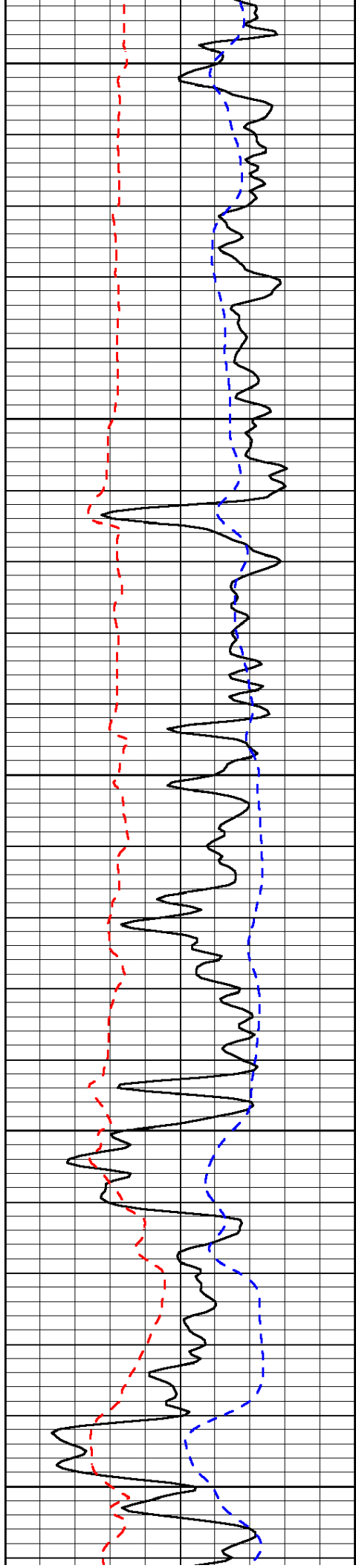
Database File: c:\warrior\data\future petroleum_west maddix unit no.3 wi\futurehd.db
 Dataset Pathname: dil\futrstk
 Presentation Format: micro
 Dataset Creation: Fri Jul 01 14:31:10 2011
 Charted by: Depth in Feet scaled 1:240

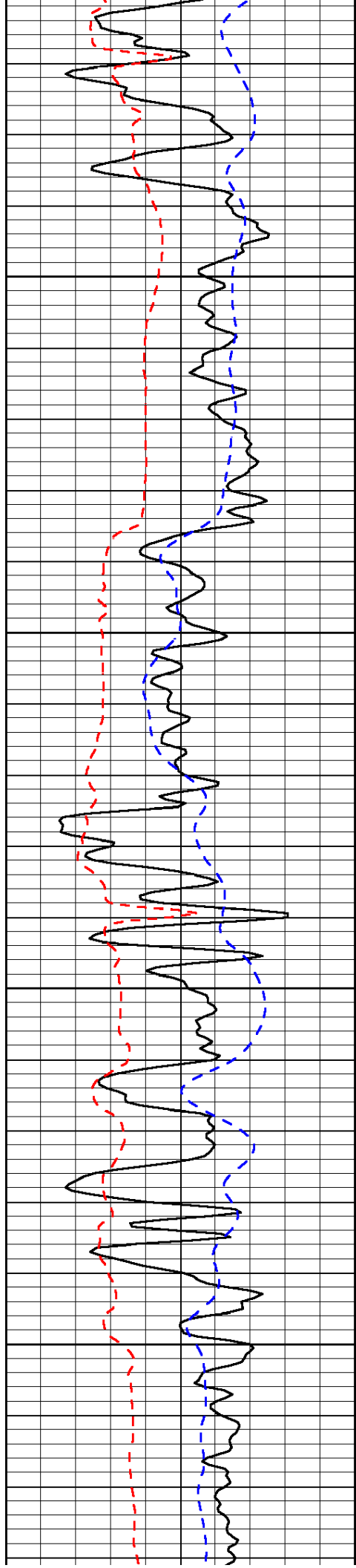
| | | |
|------|--------------------------|-----|
| 0 | Gamma Ray | 150 |
| 6 | Micro Log Caliper (GAPI) | 16 |
| -200 | SP (mV) | 0 |

| | | |
|-------|---------------------|----|
| 0 | Micro Inverse 1 X 1 | 40 |
| 0 | Micro Normal 2" | 40 |
| 15000 | Line Weight | 0 |

LSPD





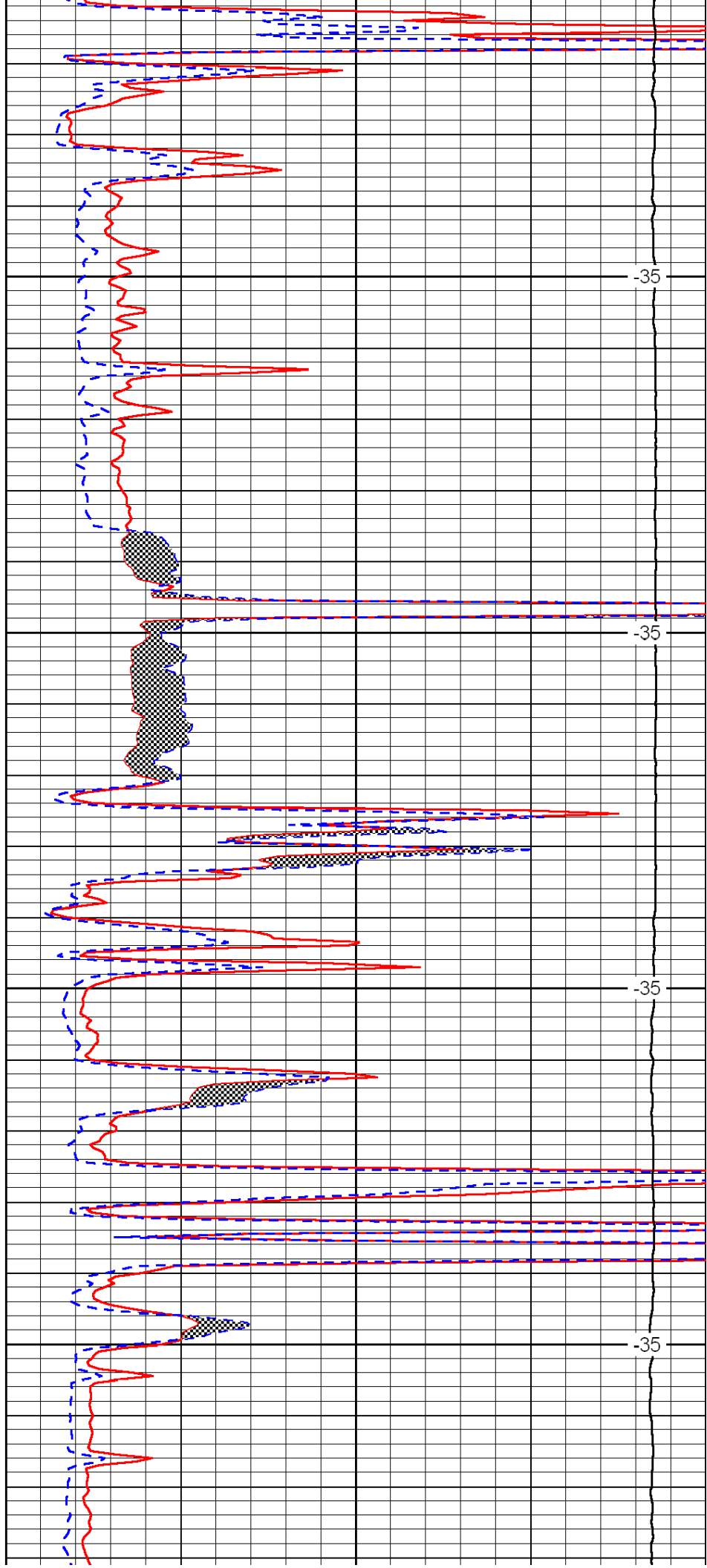


950

1000

1050

1100

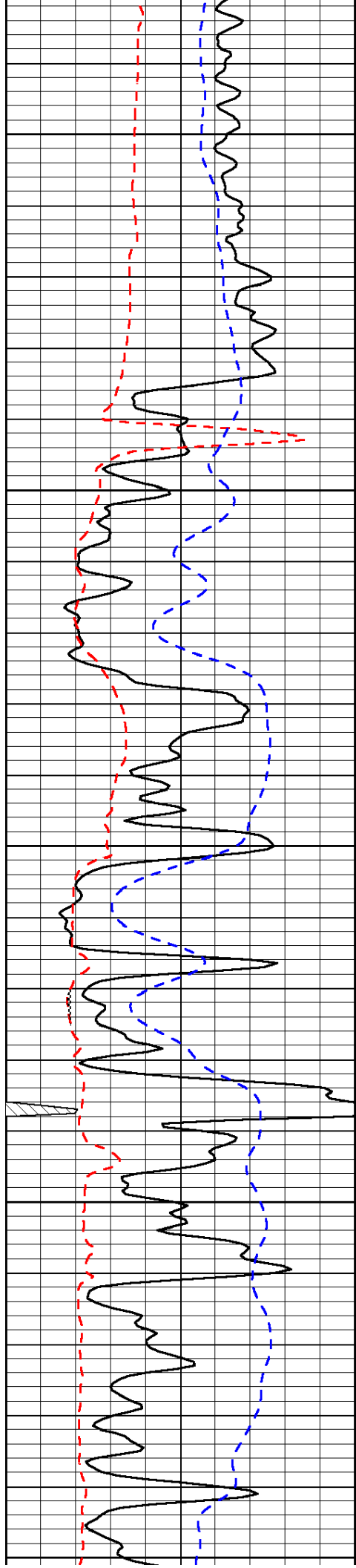


-35

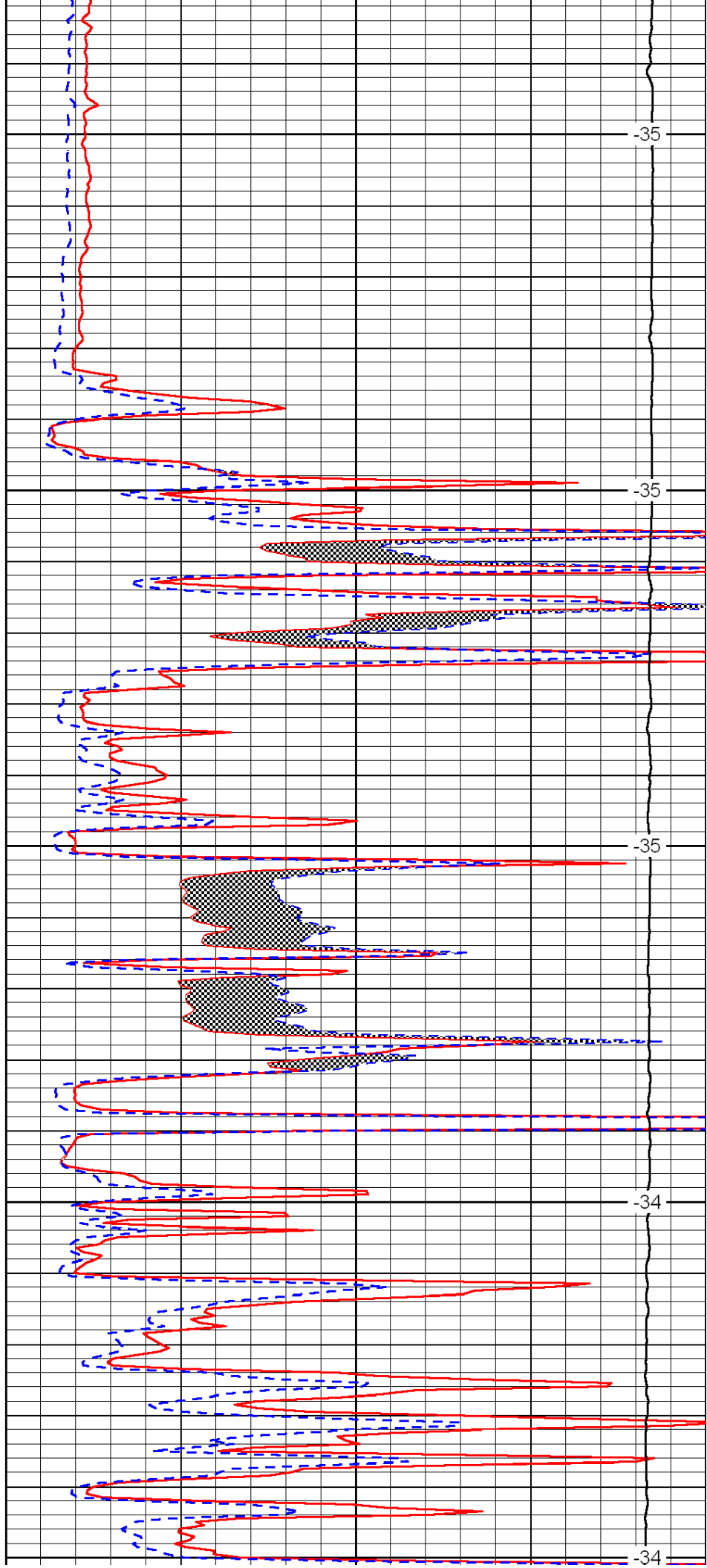
-35

-35

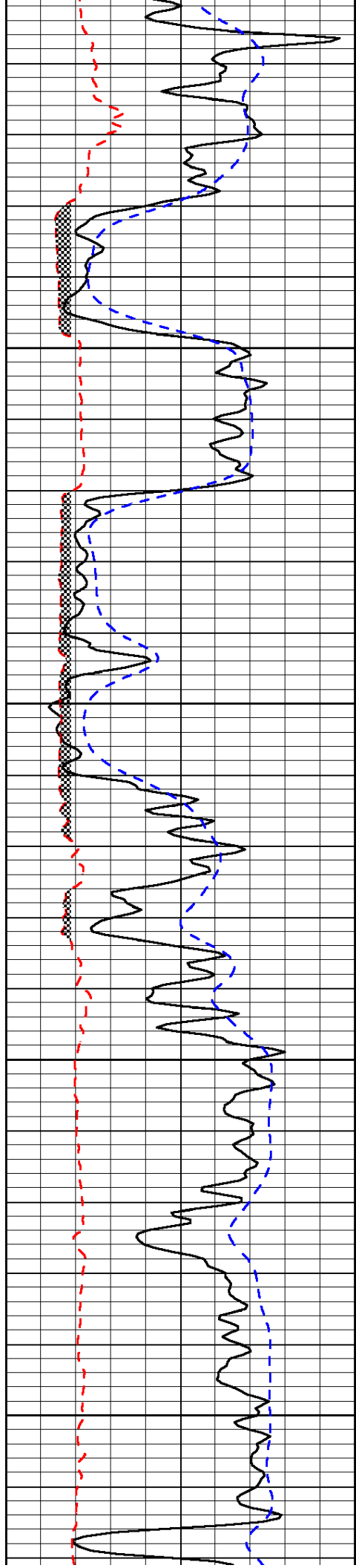
-35



1150
1200
1250
1300
1350



-35
-35
-35
-34
-34

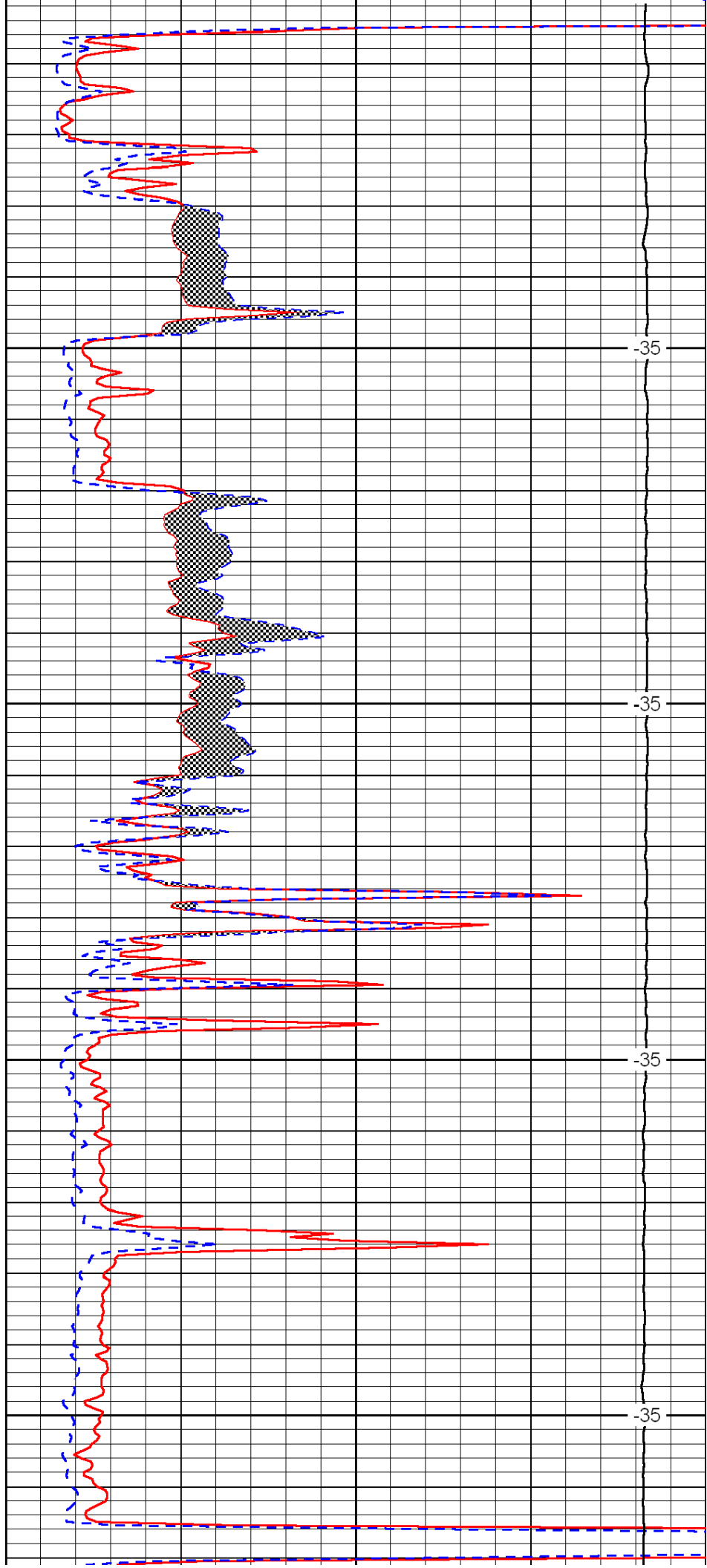


1400

1450

1500

1550

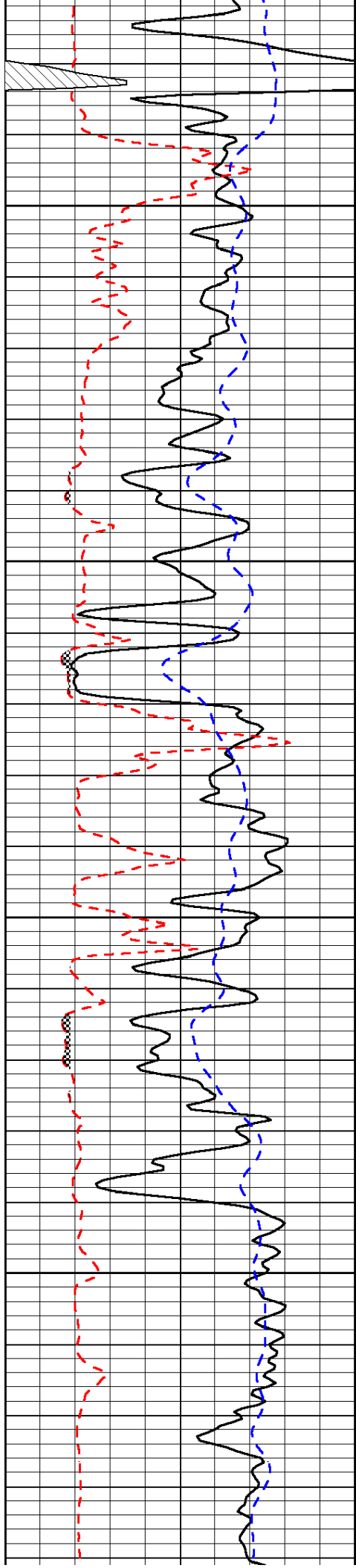


-35

-35

-35

-35

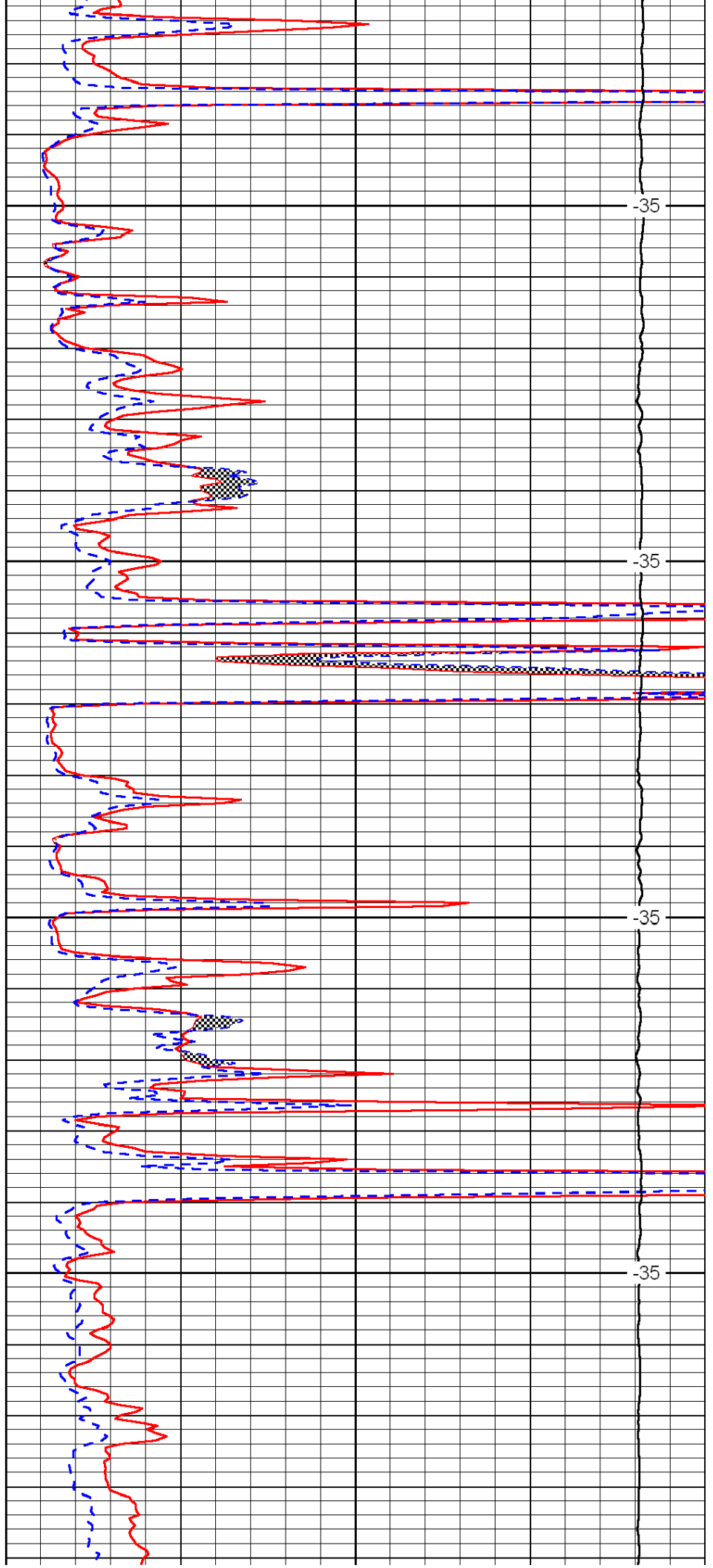


1600

1650

1700

1750

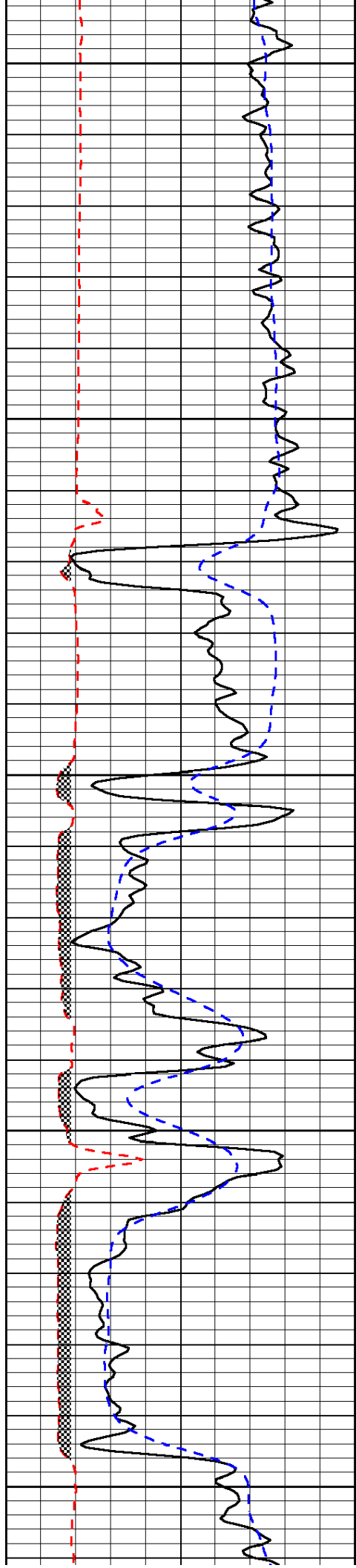


-35

-35

-35

-35



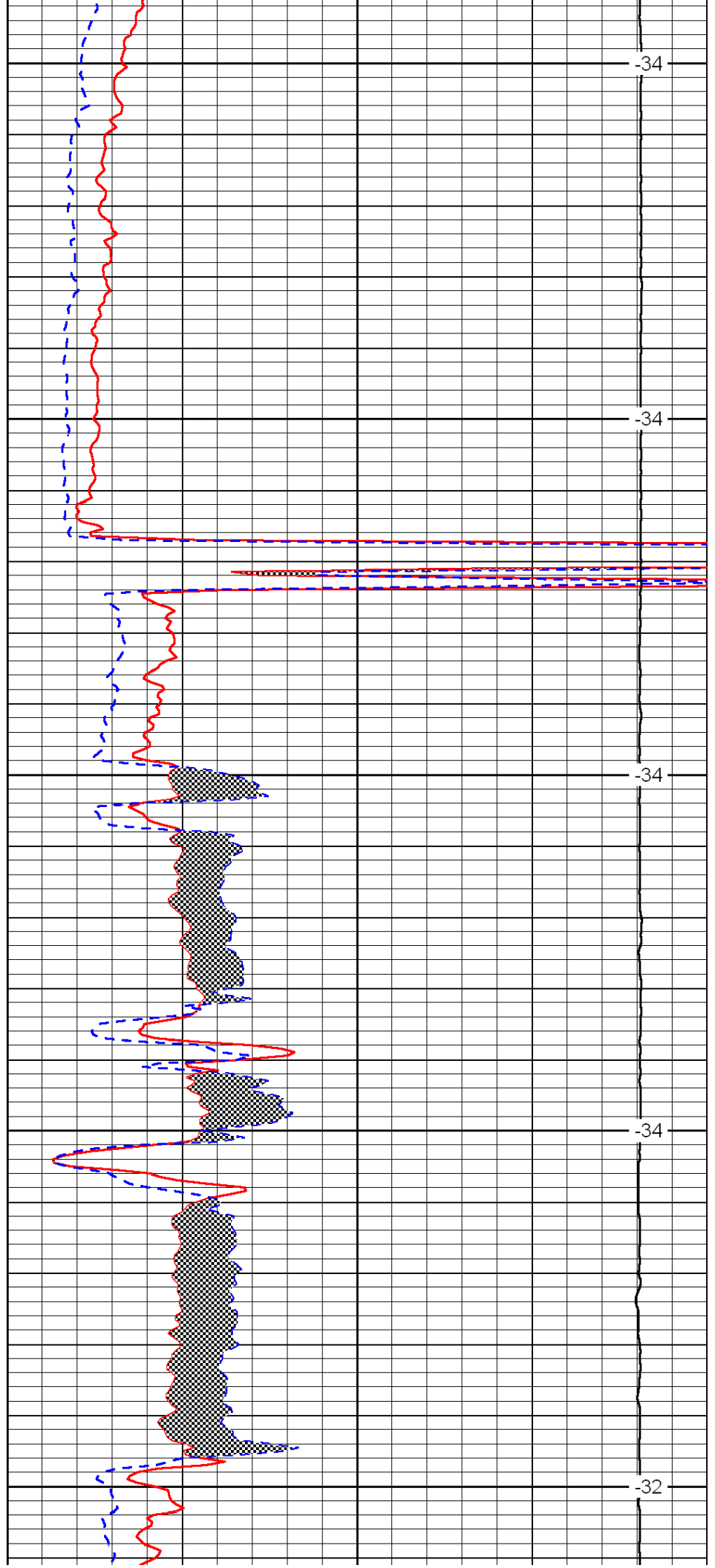
1800

1850

1900

1950

2000



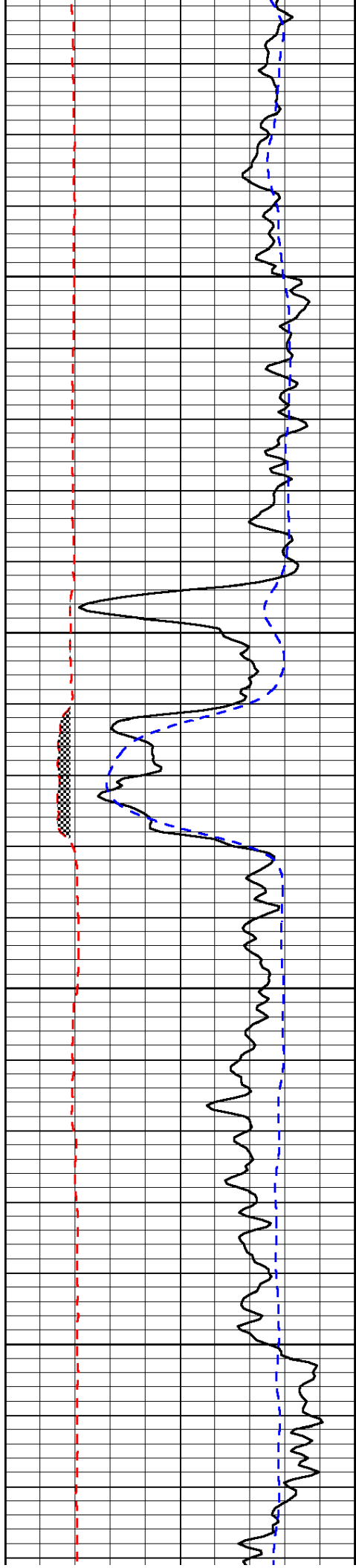
-34

-34

-34

-34

-32

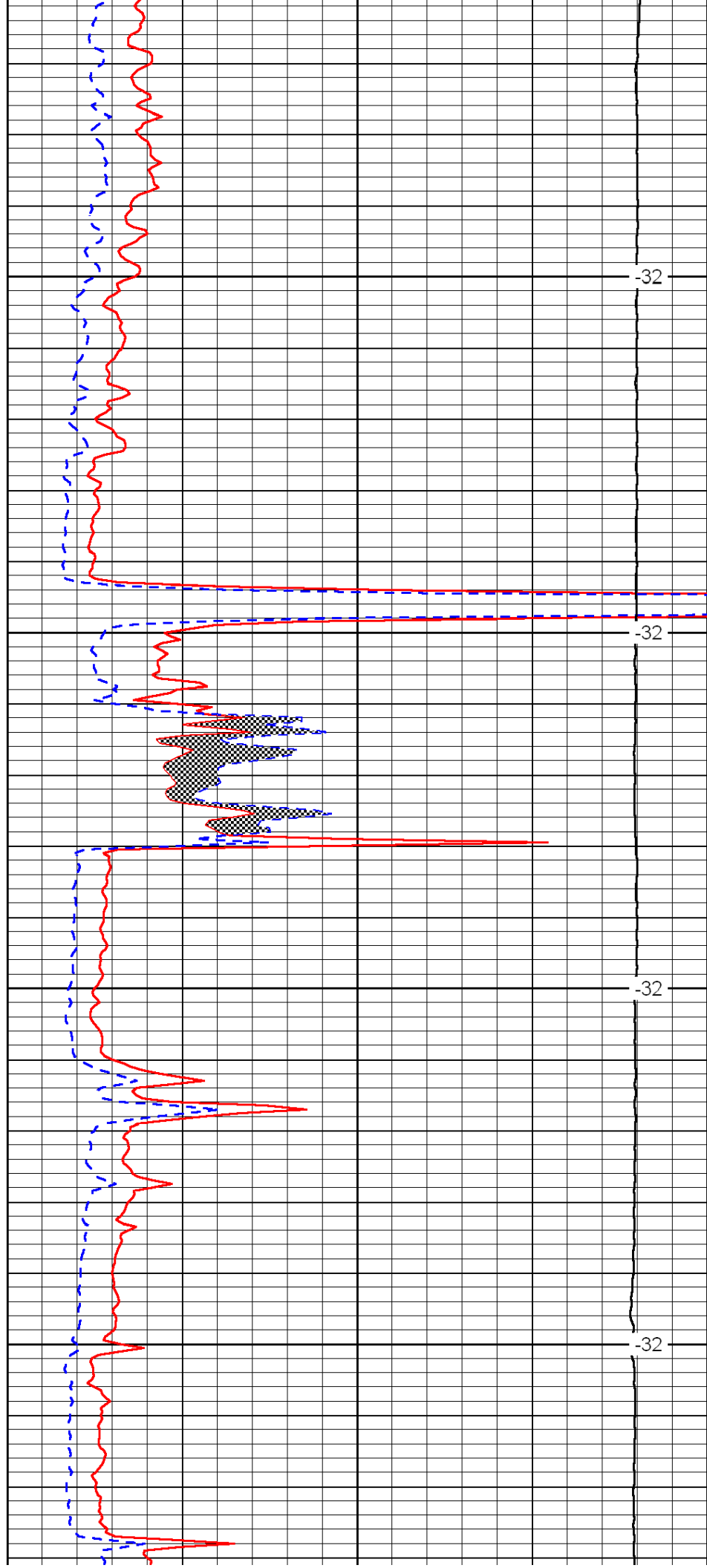


2050

2100

2150

2200

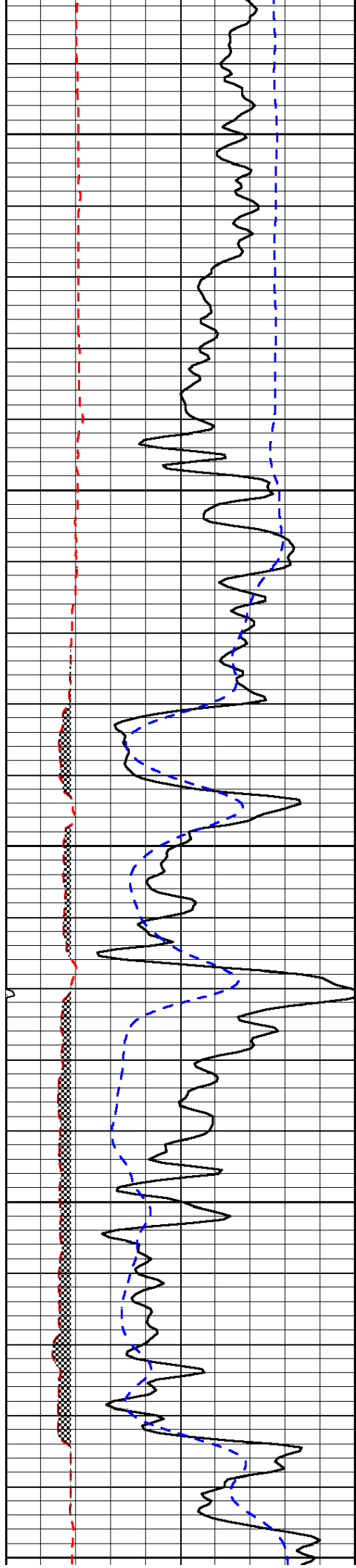


-32

-32

-32

-32



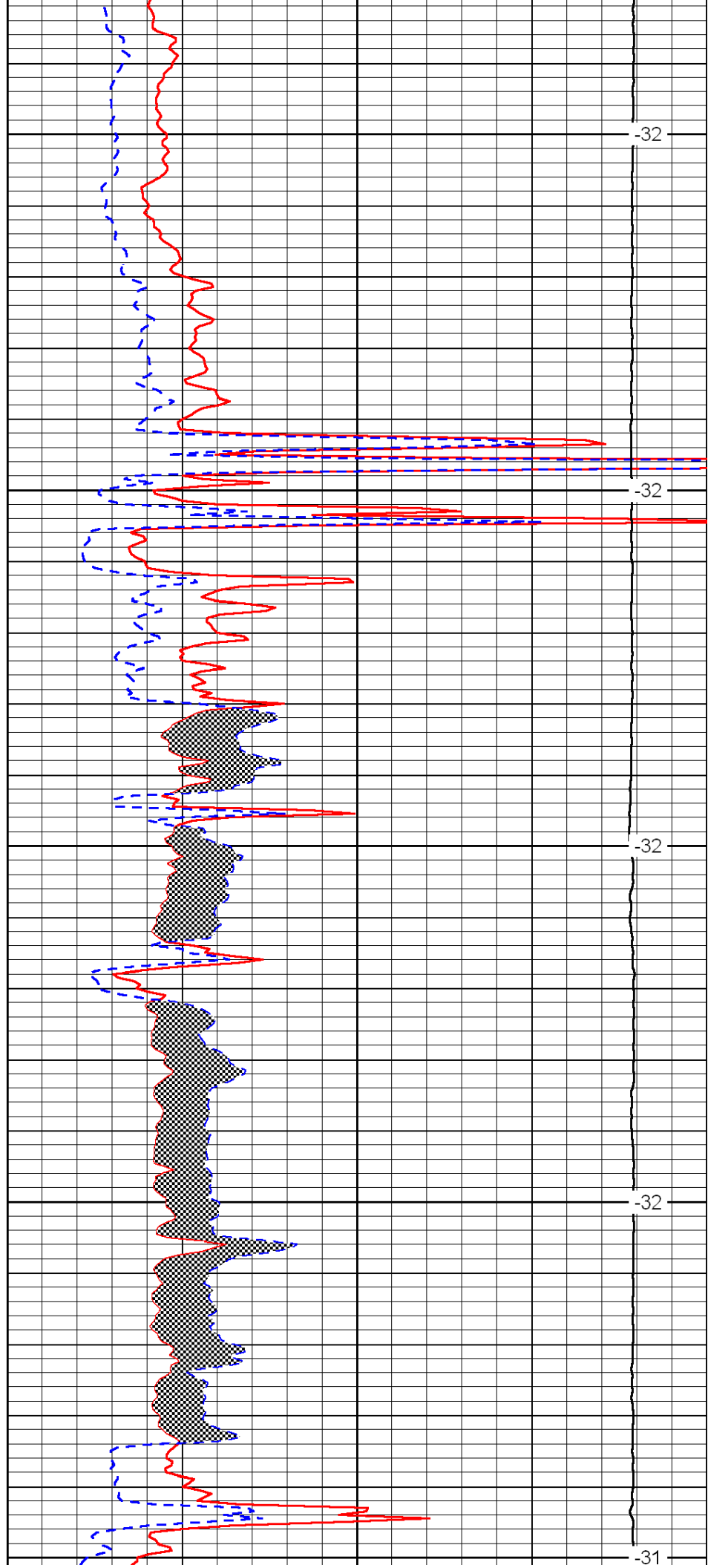
2250

2300

2350

2400

2450



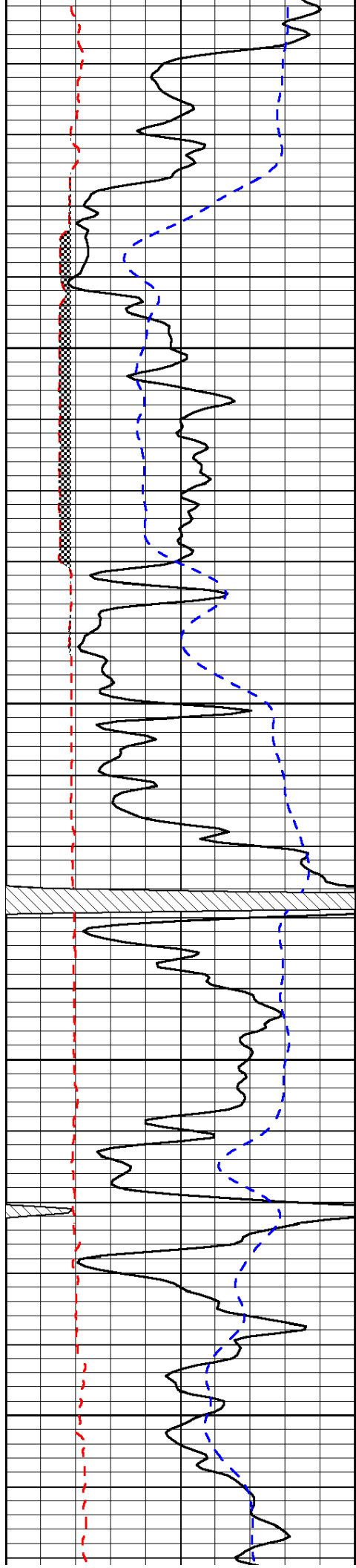
-32

-32

-32

-32

-31

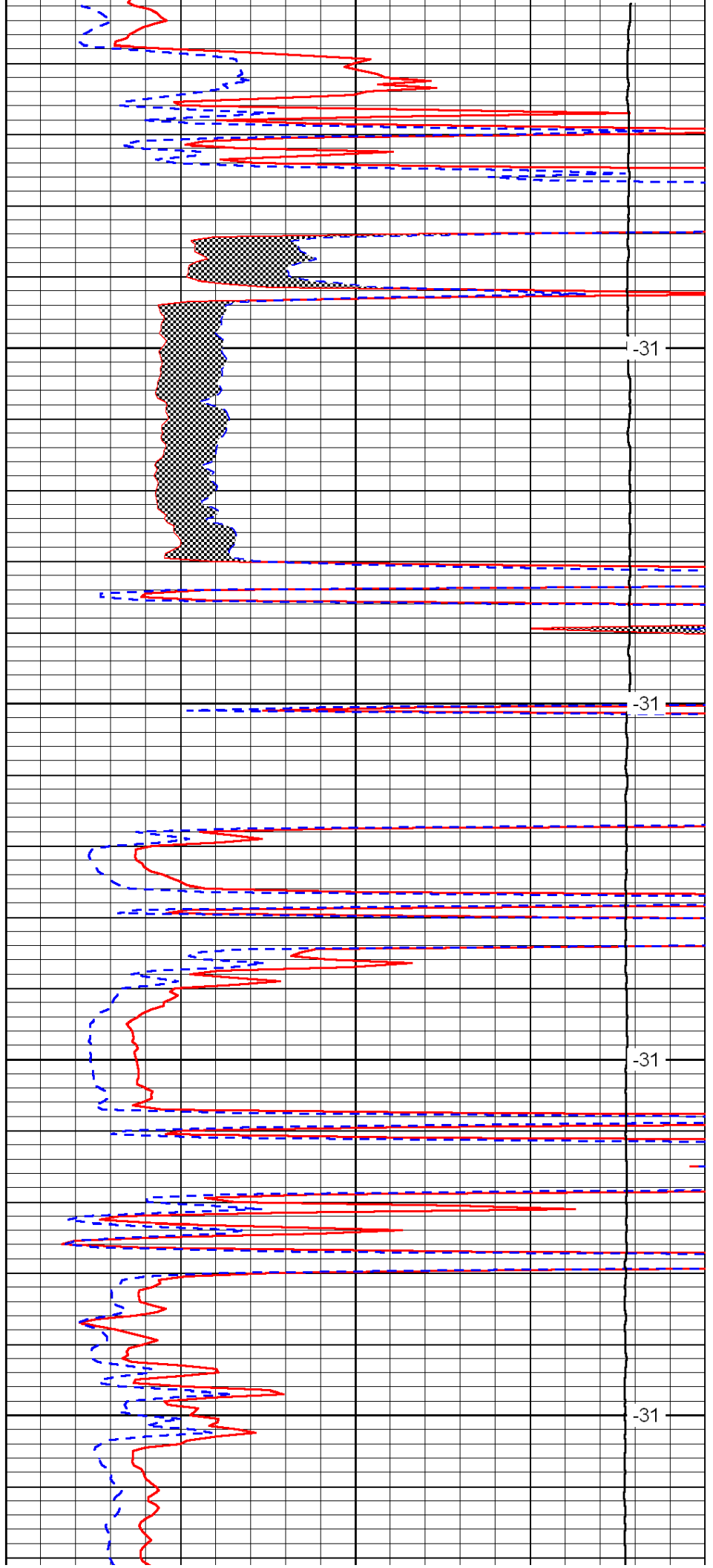


2500

2550

2600

2650

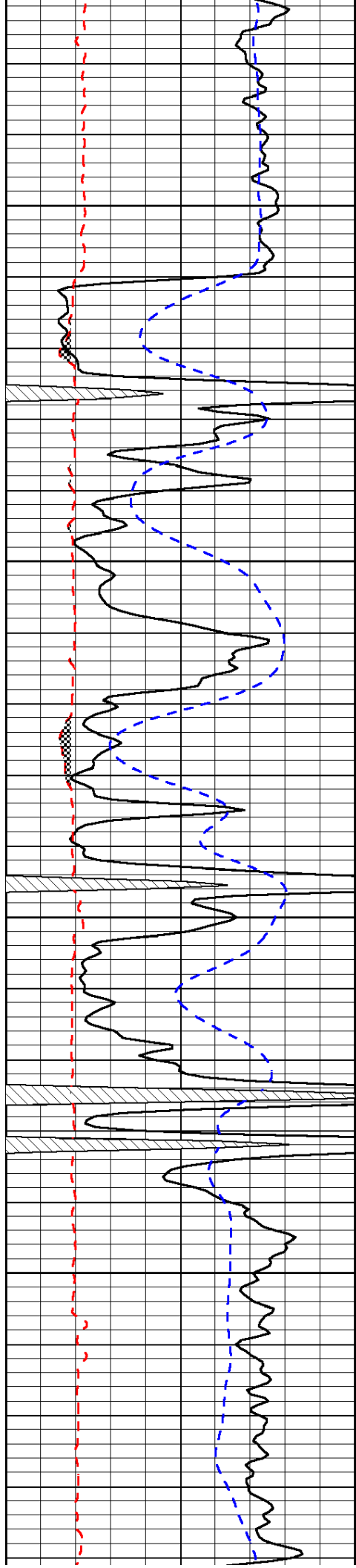


-31

-31

-31

-31

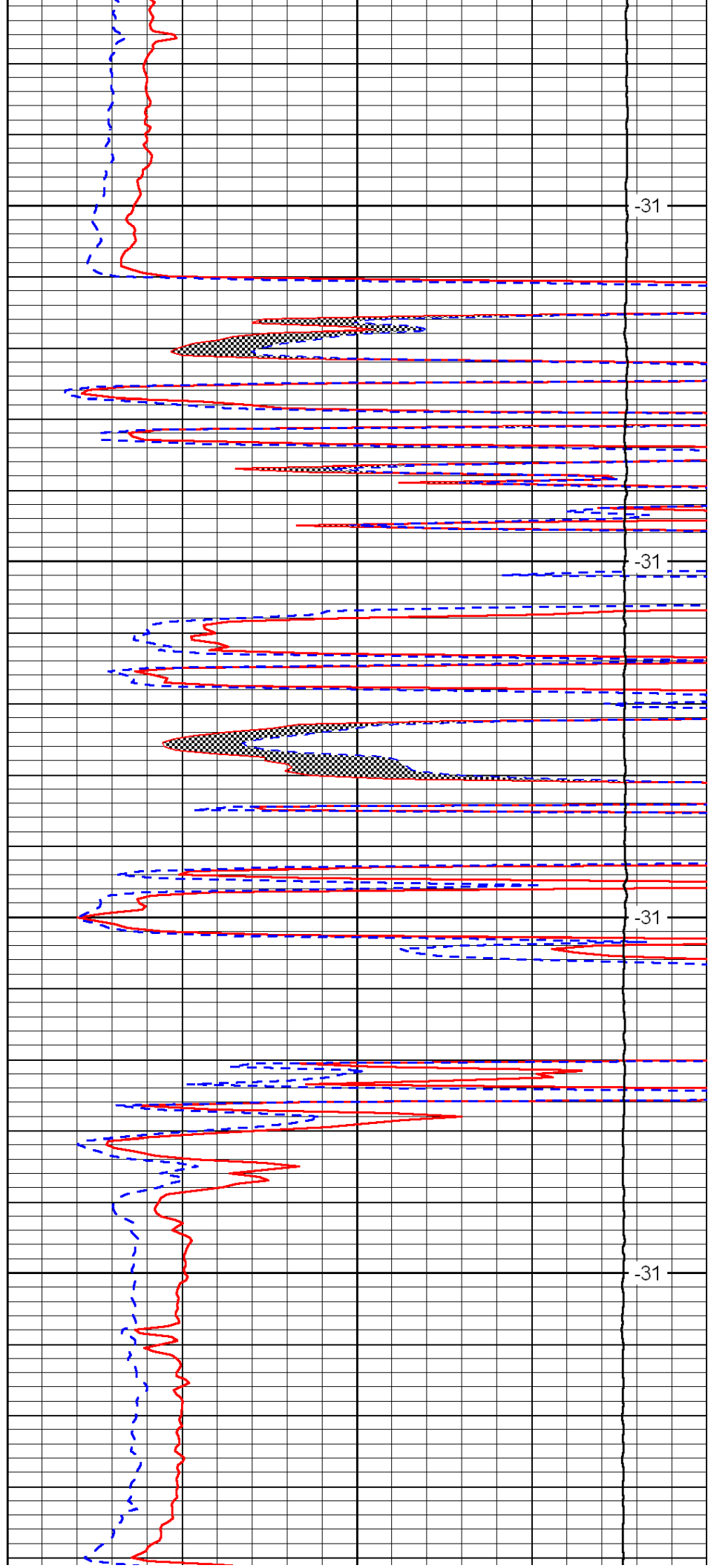


2700

2750

2800

2850

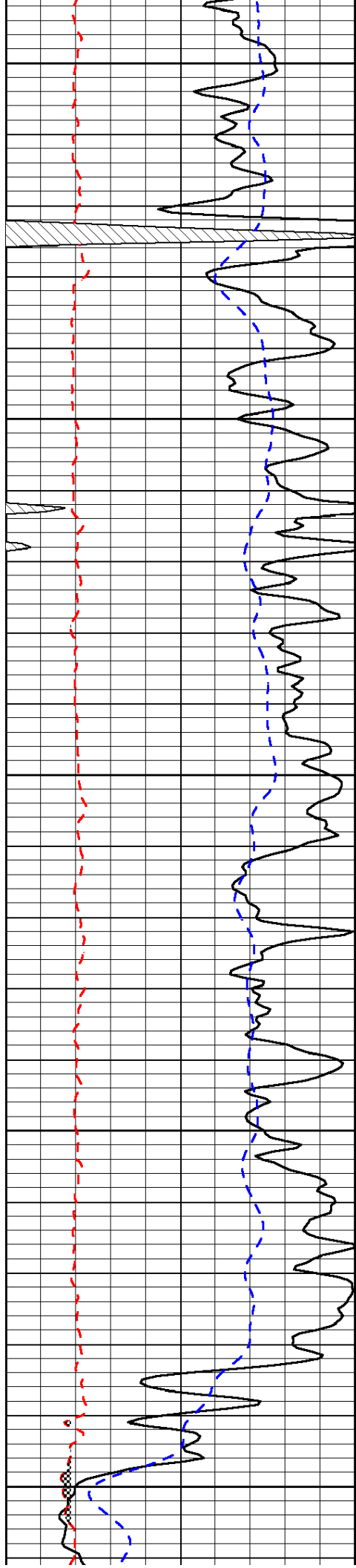


-31

-31

-31

-31



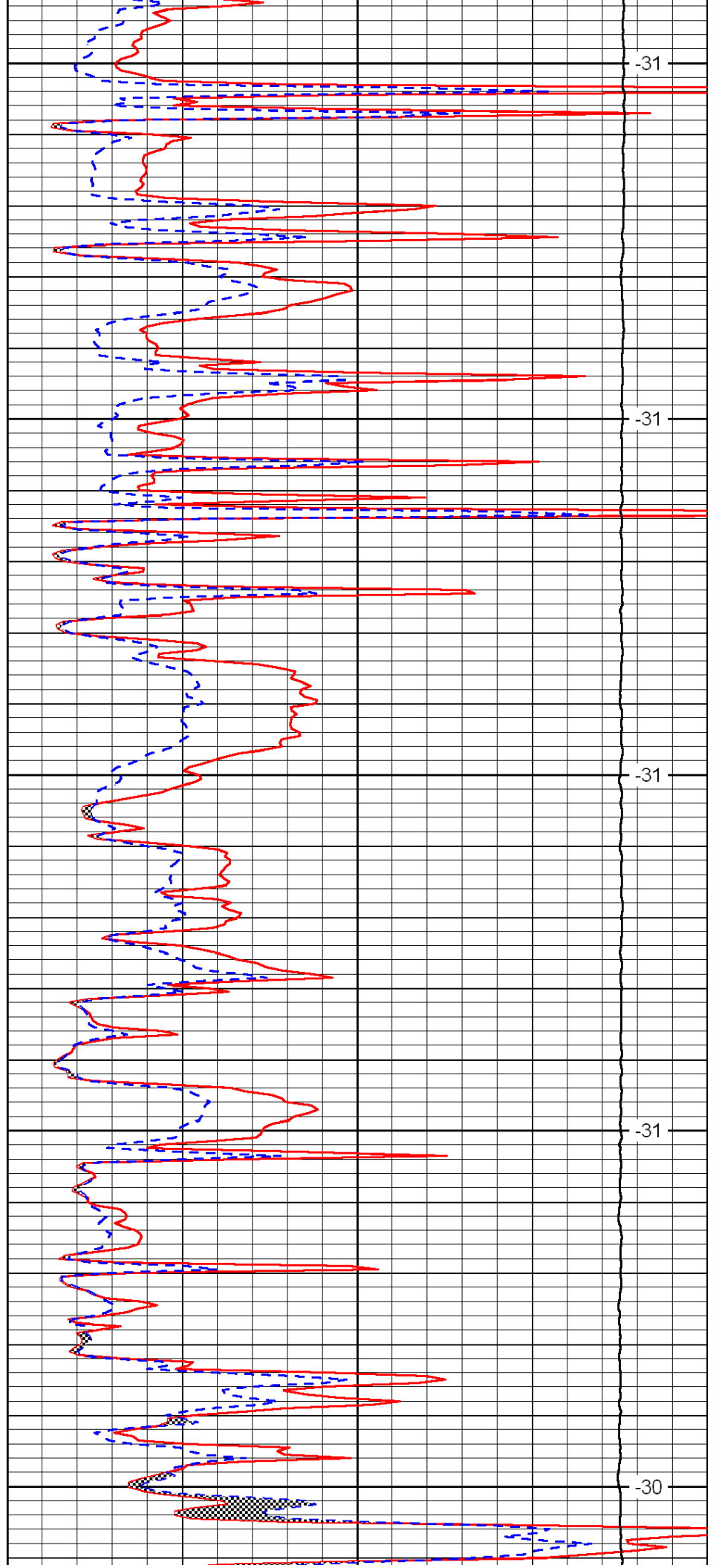
2900

2950

3000

3050

3100



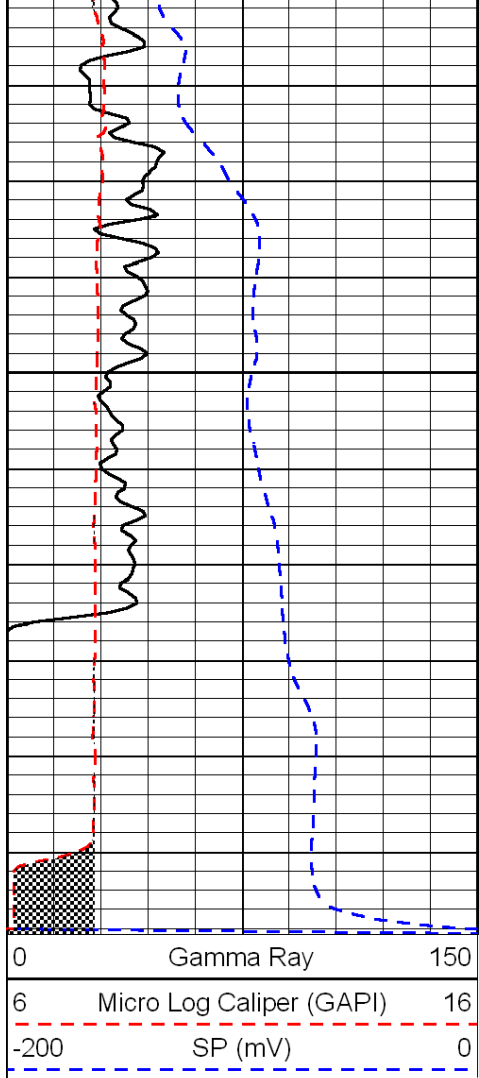
-31

-31

-31

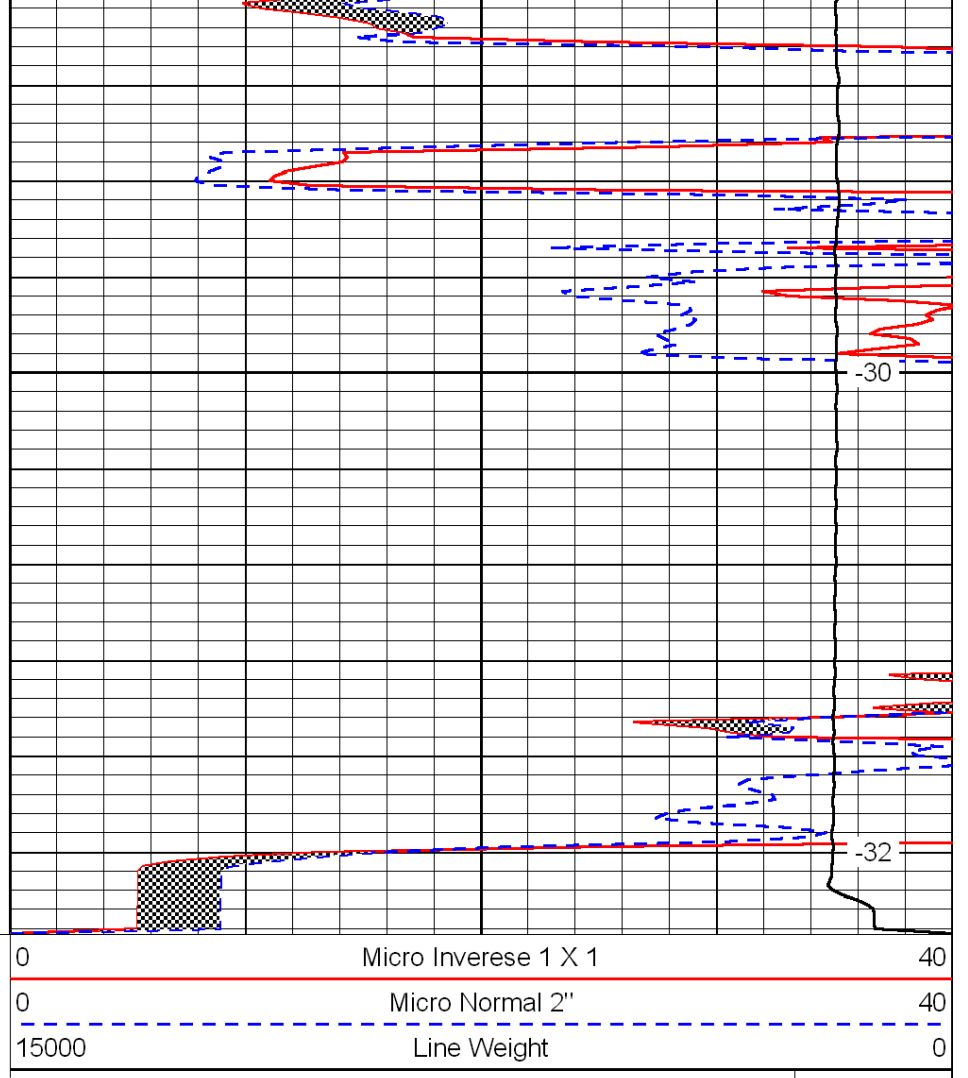
-31

-30



3150

3200



-30

-32

LSPD