



SUPERIOR
Hays,
Kansas

MICRO
LOG

Company MULL DRILLING COMPANY, INC.
Well #1-32 MURPHY-SCHROEDER UNIT
Field
County THOMAS
State KANSAS

Company MULL DRILLING COMPANY, INC.
Well #1-32 MURPHY-SCHROEDER UNIT
Field
County THOMAS State KANSAS

Location: API #: 15-193-20767
2595' FWL & 335' FSL
SEC 32 TWP 8S RGE 31W
Permanent Datum GROUND LEVEL Elevation 3033
Log Measured From KELLY BUSHING 5' A.G.L.
Drilling Measured From KELLY BUSHING
Other Services
CDL/CNL
DIL/SONIC
Elevation
K.B. 3038
D.F.
G.L. 3033

Date	7-31-09
Run Number	TWO
Depth Driller	4700
Depth Logger	4698
Bottom Logged Interval	4680
Top Log Interval	3700
Casing Driller	312
Casing Logger	NA
Bit Size	7.875
Type Fluid in Hole	CHEMICAL MUD
Density / Viscosity	9.3 / 54
pH / Fluid Loss	8.5 / 8.8
Source of Sample	FLOWLINE
Rim @ Meas. Temp	1.20 @ 90F
Rinf @ Meas. Temp	0.90 @ 90F
Rimc @ Meas. Temp	1.44 @ 90F
Source of Rinf / Rimc	MEASURED
Rim @ BHT	.890 @ 122F
Time Circulation Stopped	3 HOURS
Time Logger on Bottom	
Maximum Recorded Temperature	122F
Equipment Number	860
Location	HAYS, KS.
Recorded By	RUPP
Witnessed By	KEVIN KESSLER

<<< Fold Here >>>

All interpretations are opinions based on inferences from electrical or other measurements and we cannot and do not guarantee the accuracy or correctness of any interpretation, and we shall not, except in the case of gross or willful negligence on our part, be liable or responsible for any loss, costs, damages, or expenses incurred or sustained by anyone resulting from any interpretation made by any of our officers, agents or employees. These interpretations are also subject to our general terms and conditions set out in our current Price Schedule.

Comments

SUPERIOR WELL SERVICES
785-628-6395
THANK YOU FOR YOUR BUSINESS
DIRECTIONS: OAKLEY, TO WEST EXIT, 9N TO RD. "M", 3E, N INTO.

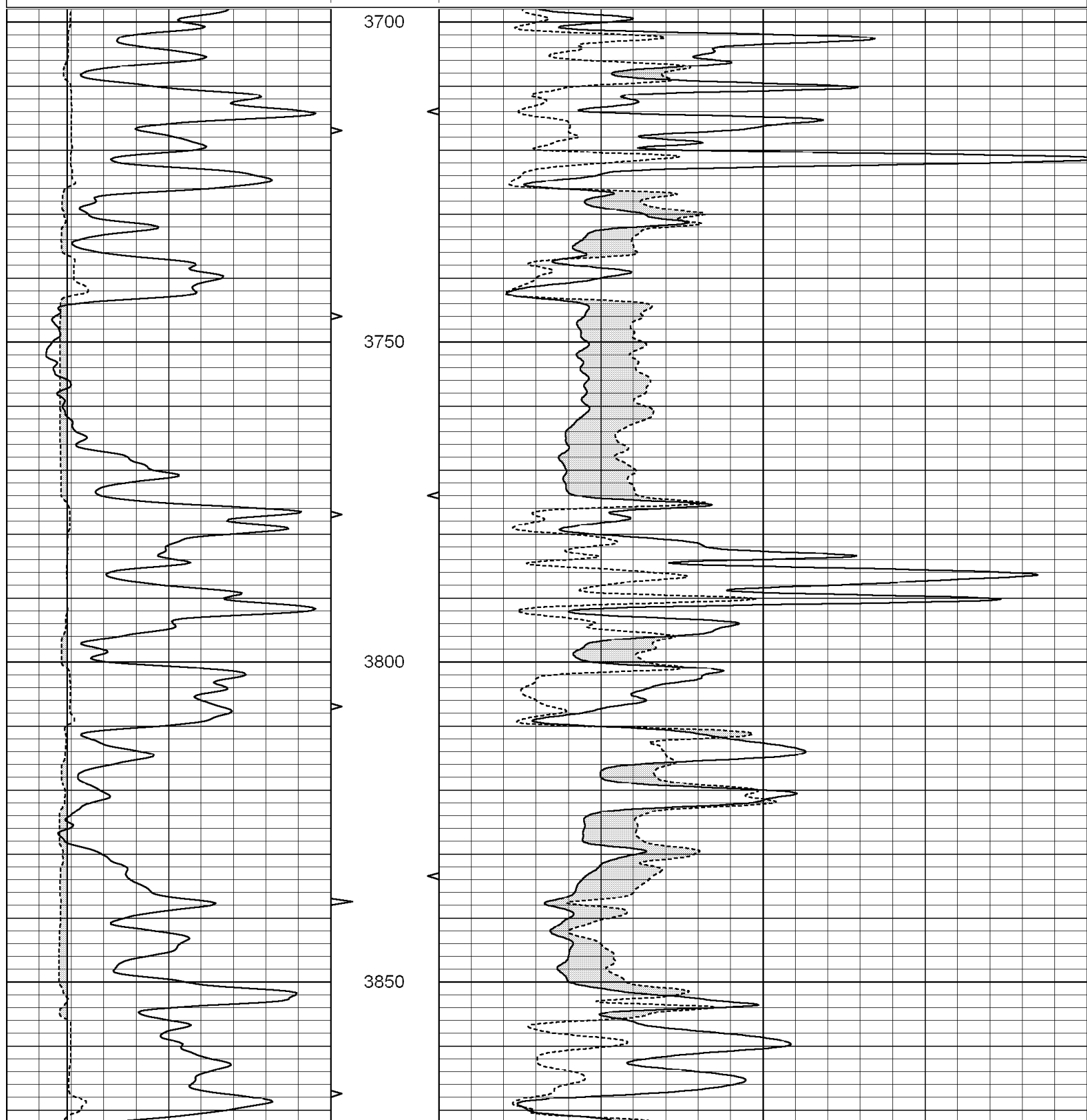


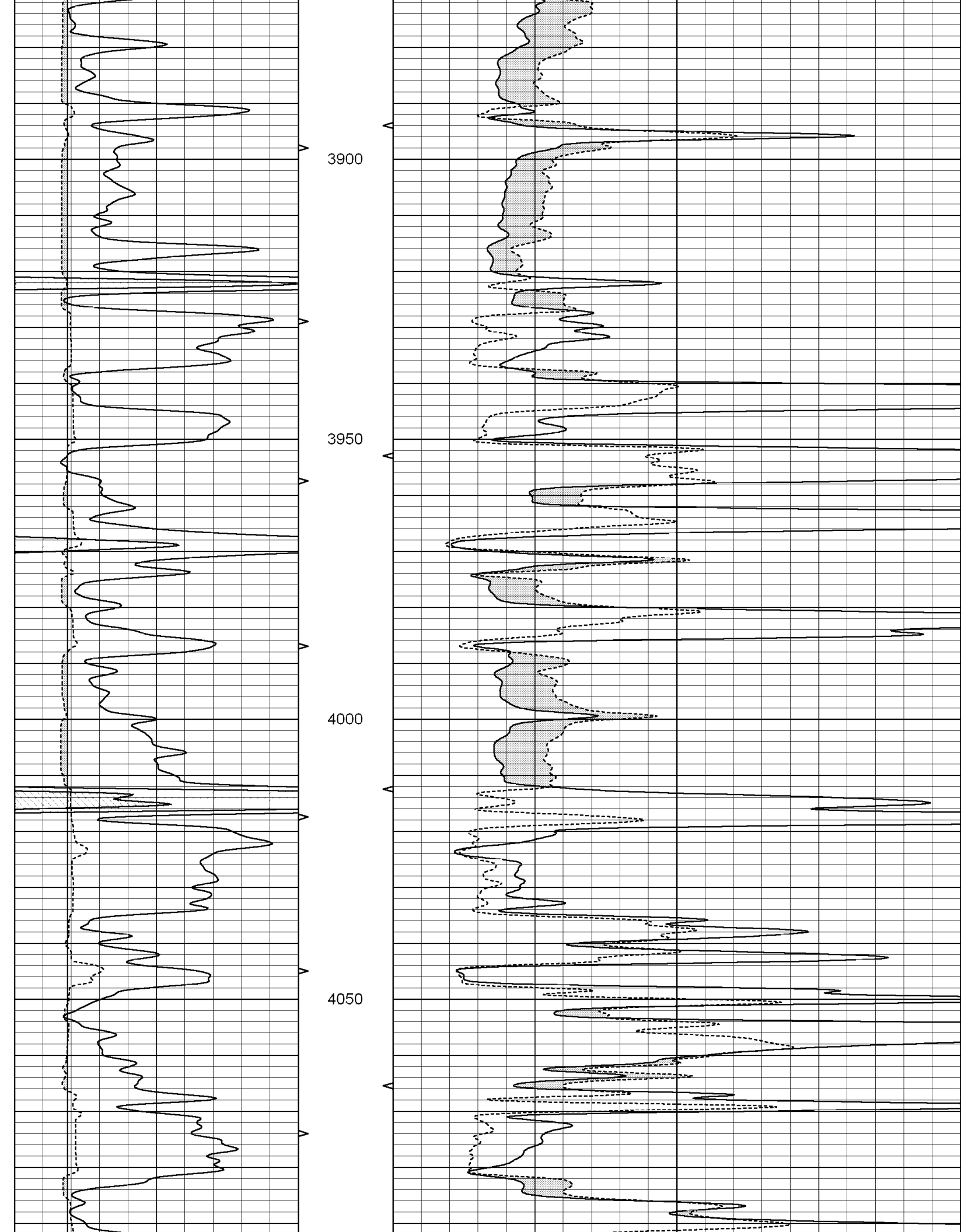
SUPERIOR
Hays,
Kansas

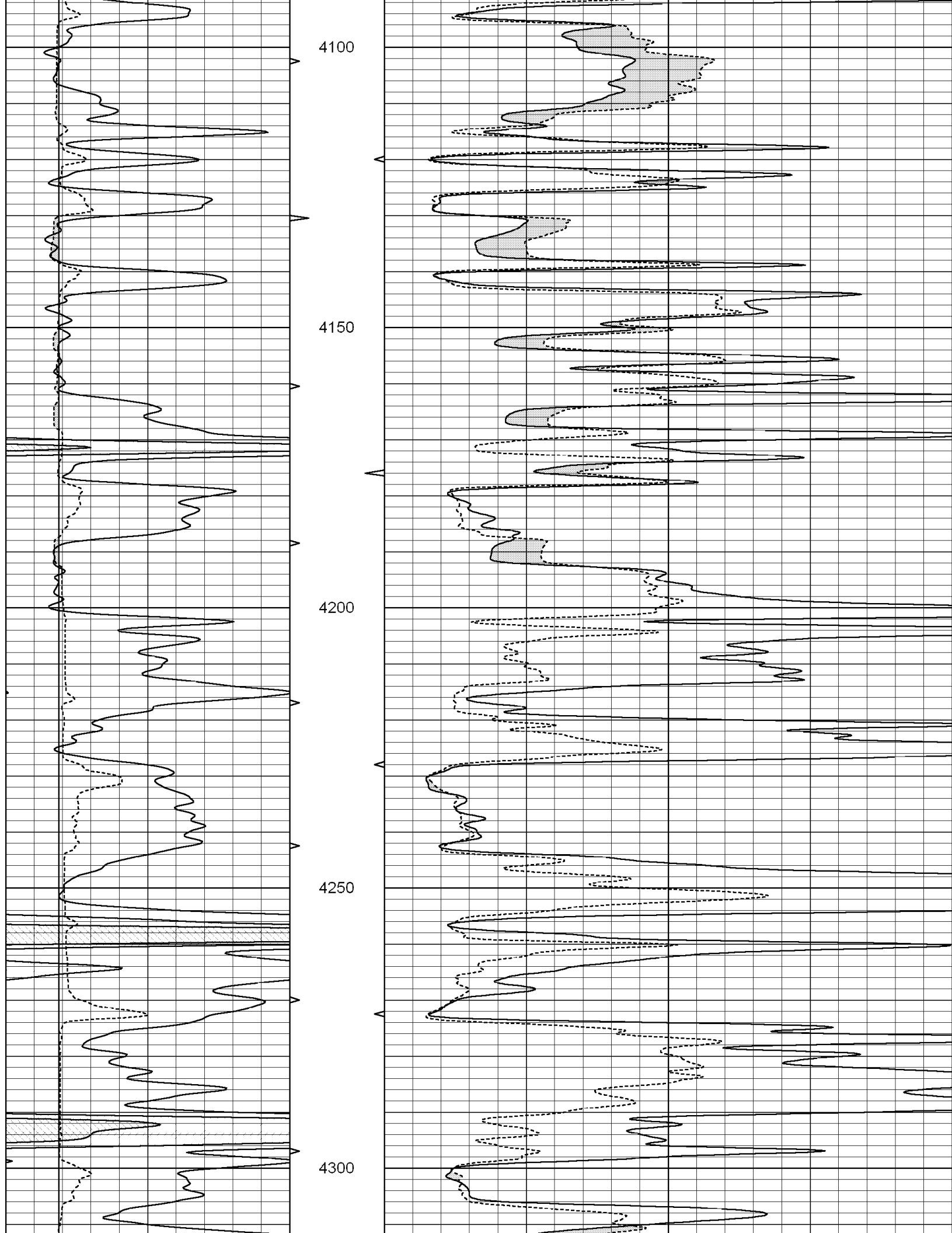
MAIN SECTION

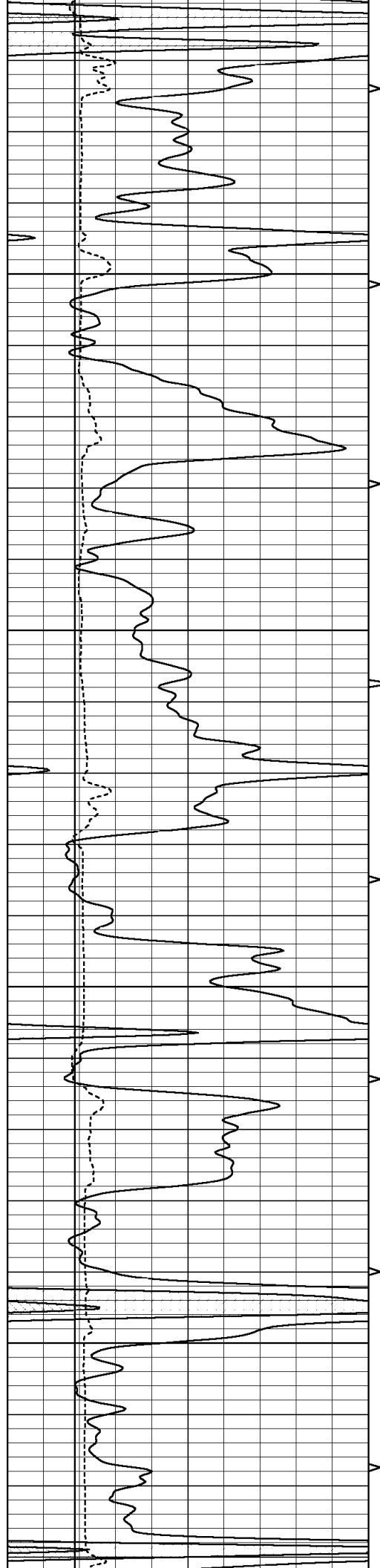
Database File: 000712ddn.db
 Dataset Pathname: pass8.1A
 Presentation Format: micro
 Dataset Creation: Fri Jul 31 11:05:55 2009 by Calc Open-Cased 051020
 Charted by: Depth in Feet scaled 1:240

0	GAMMA RAY (GAPI)	150	ABHV	0	MEL1.5 (Ohm-m)	20
6	CALIPER (in)	16	10 (ft3)	0	MEL2.0 (Ohm-m)	20
			TBHV			
			0 (ft3)	10		







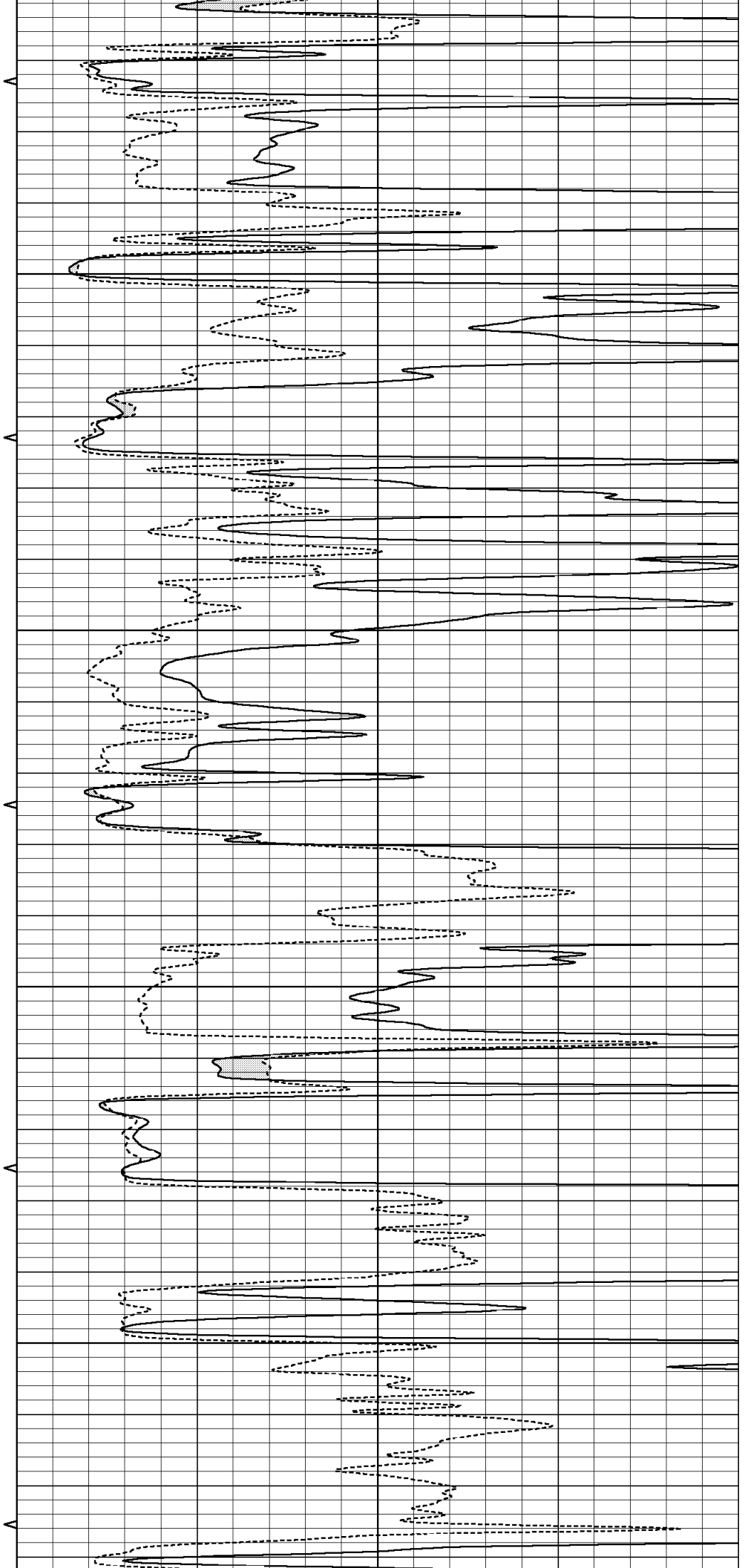


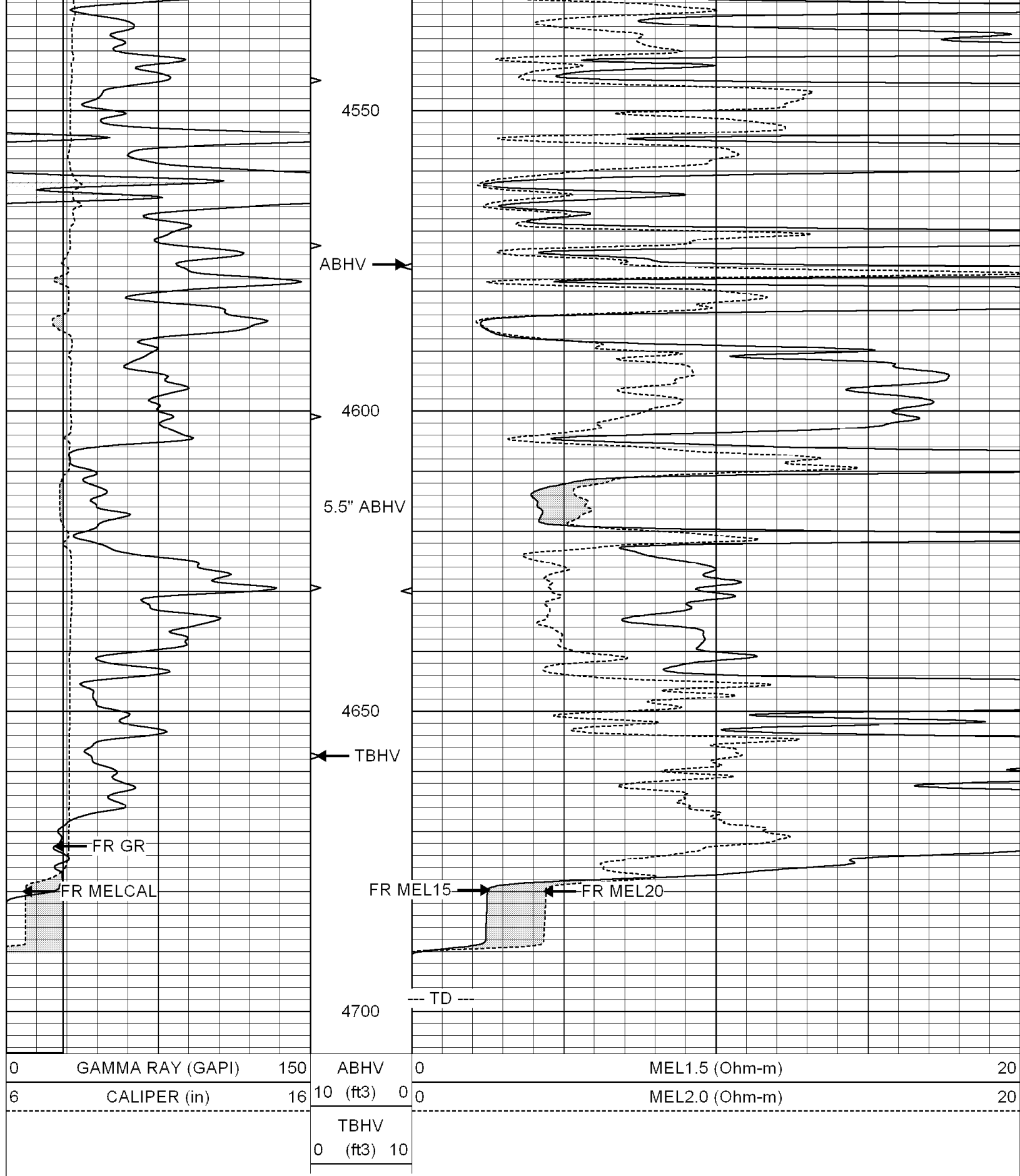
4350

4400

4450

4500



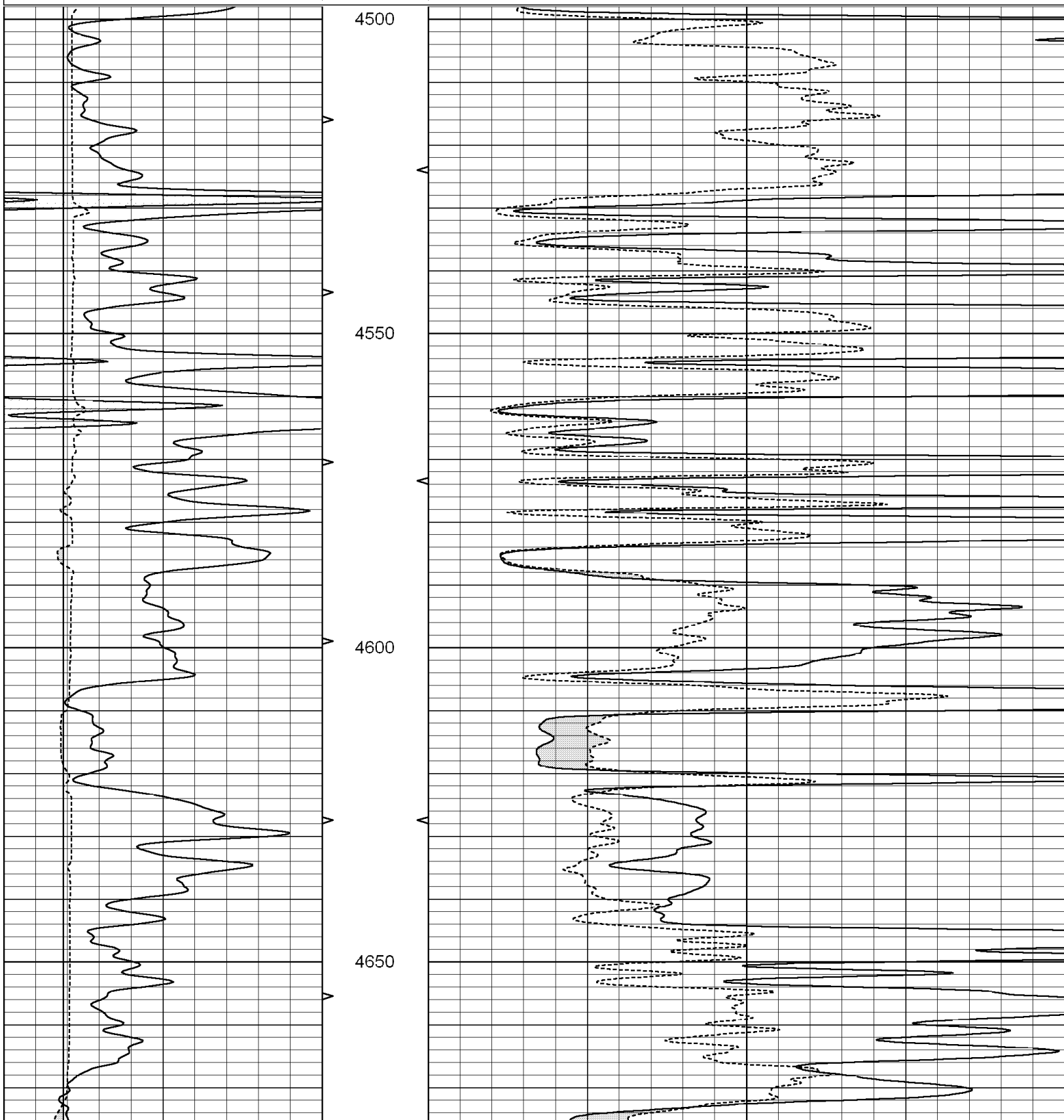


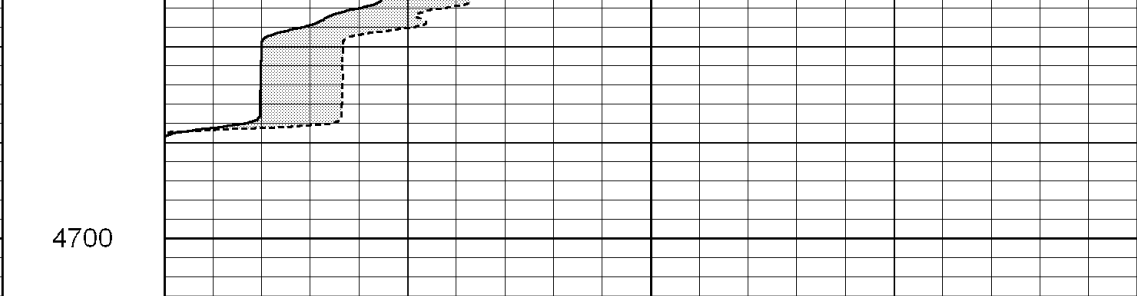
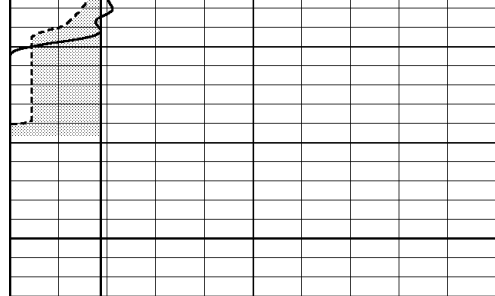
SUPERIOR
Hays,
Kansas

REPEAT SECTION

Database File: 000712ddn.db
 Dataset Pathname: pass7.1
 Presentation Format: micro
 Dataset Creation: Fri Jul 31 11:13:43 2009 by Calc Open-Cased 051020
 Charted by: Depth in Feet scaled 1:240

0	GAMMA RAY (GAPI)	150	ABHV	0	MEL1.5 (Ohm-m)	20
6	CALIPER (in)	16	10 (ft3)	0	MEL2.0 (Ohm-m)	20
			TBHV			
			0 (ft3)	10		





4700

0	GAMMA RAY (GAPI)	150	ABHV	0	MEL1.5 (Ohm-m)	20
6	CALIPER (in)	16	10 (ft3) 0	0	MEL2.0 (Ohm-m)	20
			TBHV			
			0 (ft3) 10			