



**SUPERIOR**  
Hays,  
Kansas

**MICRO**  
LOG

Company MULL DRILLING COMPANY, INC.  
Well #1-13 GARVEY UNIT  
Field WILDCAT  
County GOVE  
State KANSAS

Company MULL DRILLING COMPANY, INC.  
Well #1-13 GARVEY UNIT  
Field WILDCAT  
County GOVE State KANSAS

Location: API #: 15-063-21779-0000  
1811' FSL & 231' FEL  
SEC 13 TWP 15S RGE 27W  
Permanent Datum GROUND LEVEL Elevation 2458  
Log Measured From KELLY BUSHING 9' A.G.L.  
Drilling Measured From KELLY BUSHING  
Other Services  
CDL/CNL  
DIL/SONIC  
Elevation  
K.B. 2467  
D.F. 2465  
G.L. 2458

Date	7/8/09
Run Number	TWO
Depth Driller	4425
Depth Logger	4426
Bottom Logged Interval	4403
Top Log Interval	3500
Casing Driller	8 5/8"@210'
Casing Logger	209
Bit Size	7 7/8
Type Fluid In Hole	CHEMICAL MUD
Density / Viscosity	9.1/52
pH / Fluid Loss	10.0/8.4
Source of Sample	FLOWLINE
Rm @ Meas. Temp	.700@96F
Rmf @ Meas. Temp	.525@96F
Rmc @ Meas. Temp	.840@96F
Source of Rmf / Rmc	MEASUREMENT
Rm @ BHT	.560@120F
Time Circulation Stopped	4.5 HOURS
Time Logger on Bottom	7:30 P.M.
Maximum Recorded Temperature	120F
Equipment Number	0836
Location	HAYS, KANSAS
Recorded By	JEFF LUEBBERS
Witnessed By	KEVIN KESSLER

<<< Fold Here >>>

All interpretations are opinions based on inferences from electrical or other measurements and we cannot and do not guarantee the accuracy or correctness of any interpretation, and we shall not, except in the case of gross or willful negligence on our part, be liable or responsible for any loss, costs, damages, or expenses incurred or sustained by anyone resulting from any interpretation made by any of our officers, agents or employees. These interpretations are also subject to our general terms and conditions set out in our current Price Schedule.

**Comments**

THANK YOU FOR USING SUPERIOR WELL SERVICE HAYS, KANSAS (785) 628-6395  
DIRECTIONS  
UTICA, KS. 3W. ON HWY 4 TO CASTLE ROCK RD., 6 1/2N. TO GOVE COUNTY RD. "C", 2E. & N. ON CURVY RD. TO OLD FARMSTEAD. TURN E. BETWEEN LIMESTONE HOUSE & METAL SHED TO PASTURE BEHIND TREES

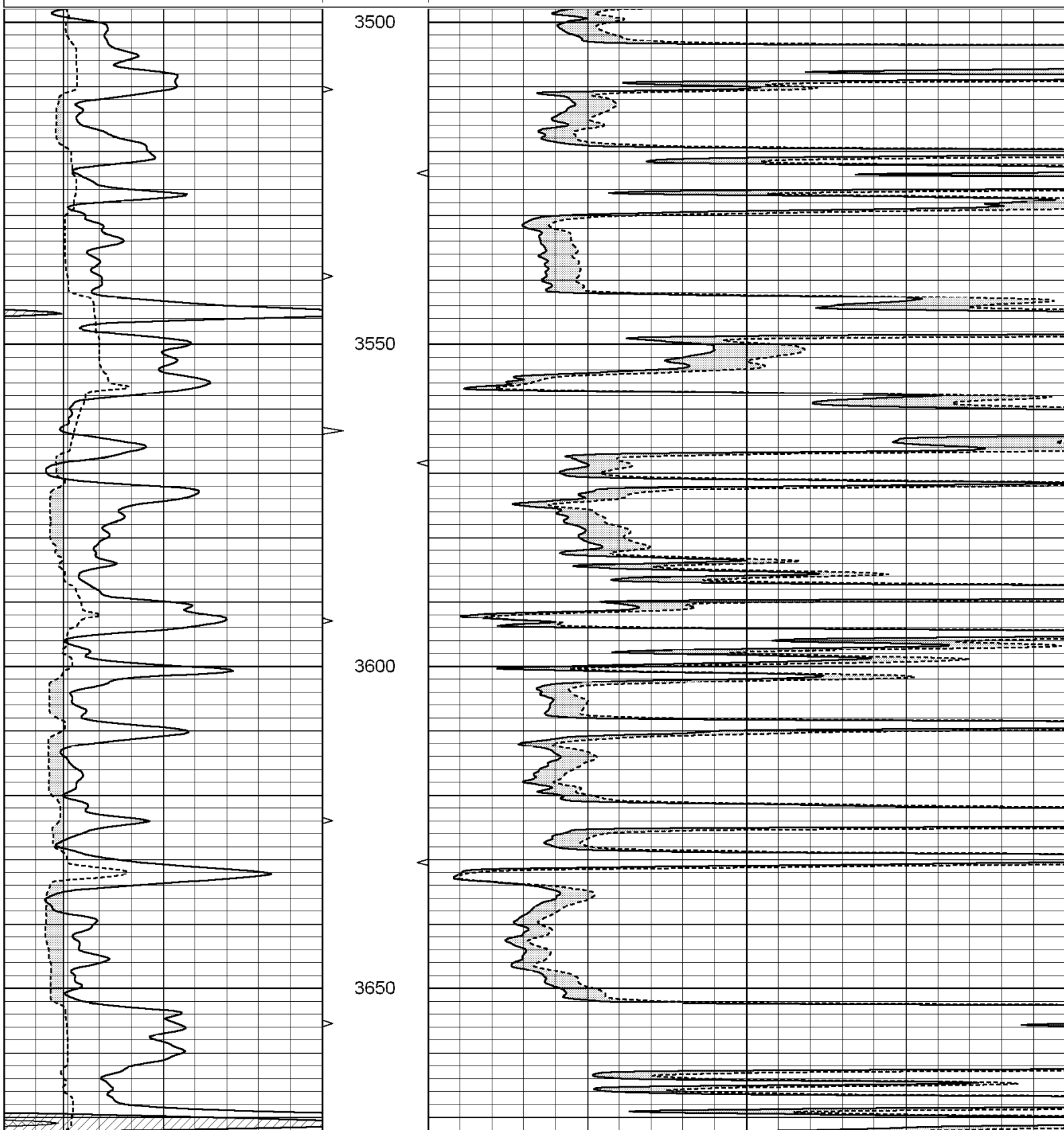


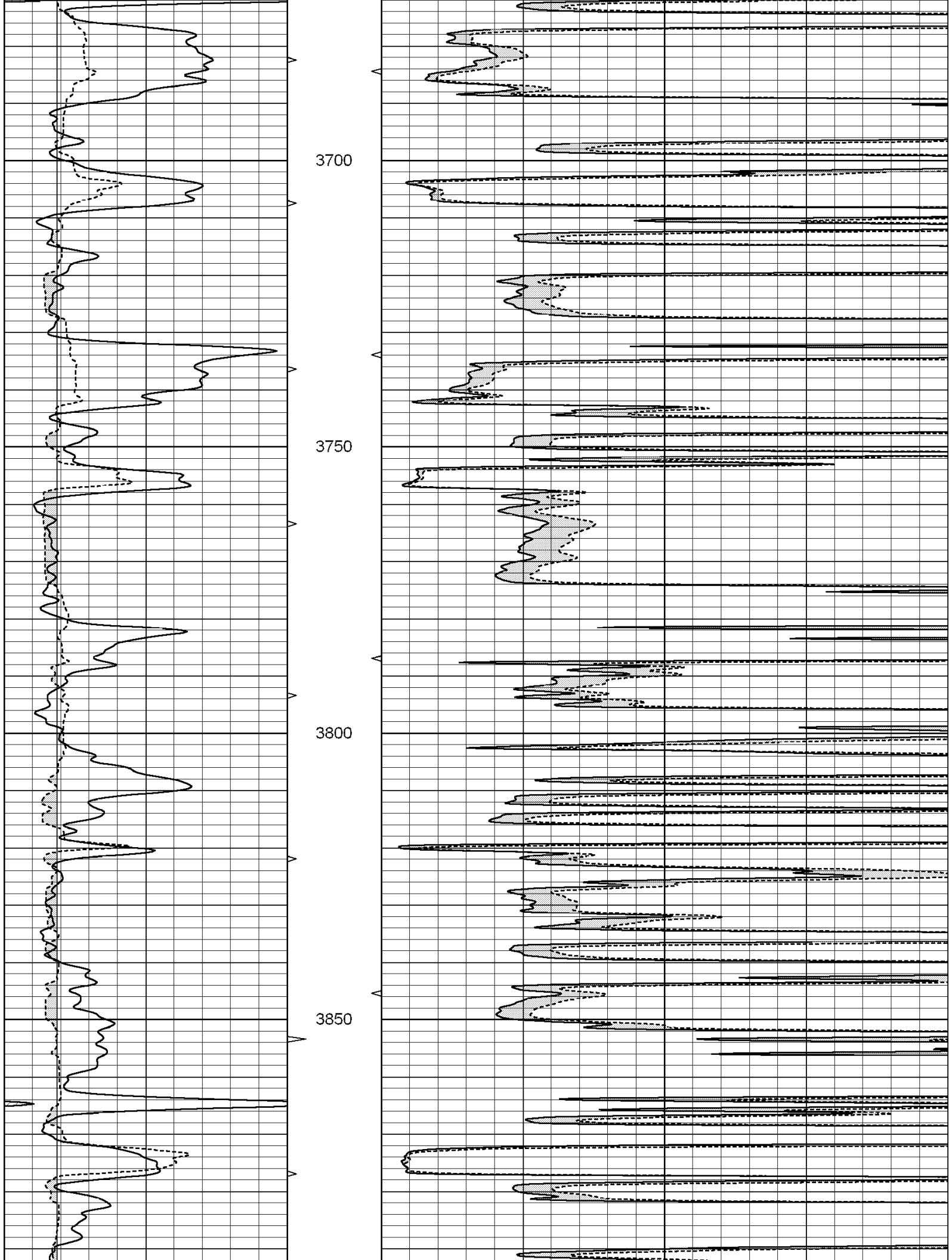
**SUPERIOR**  
Hays,  
Kansas

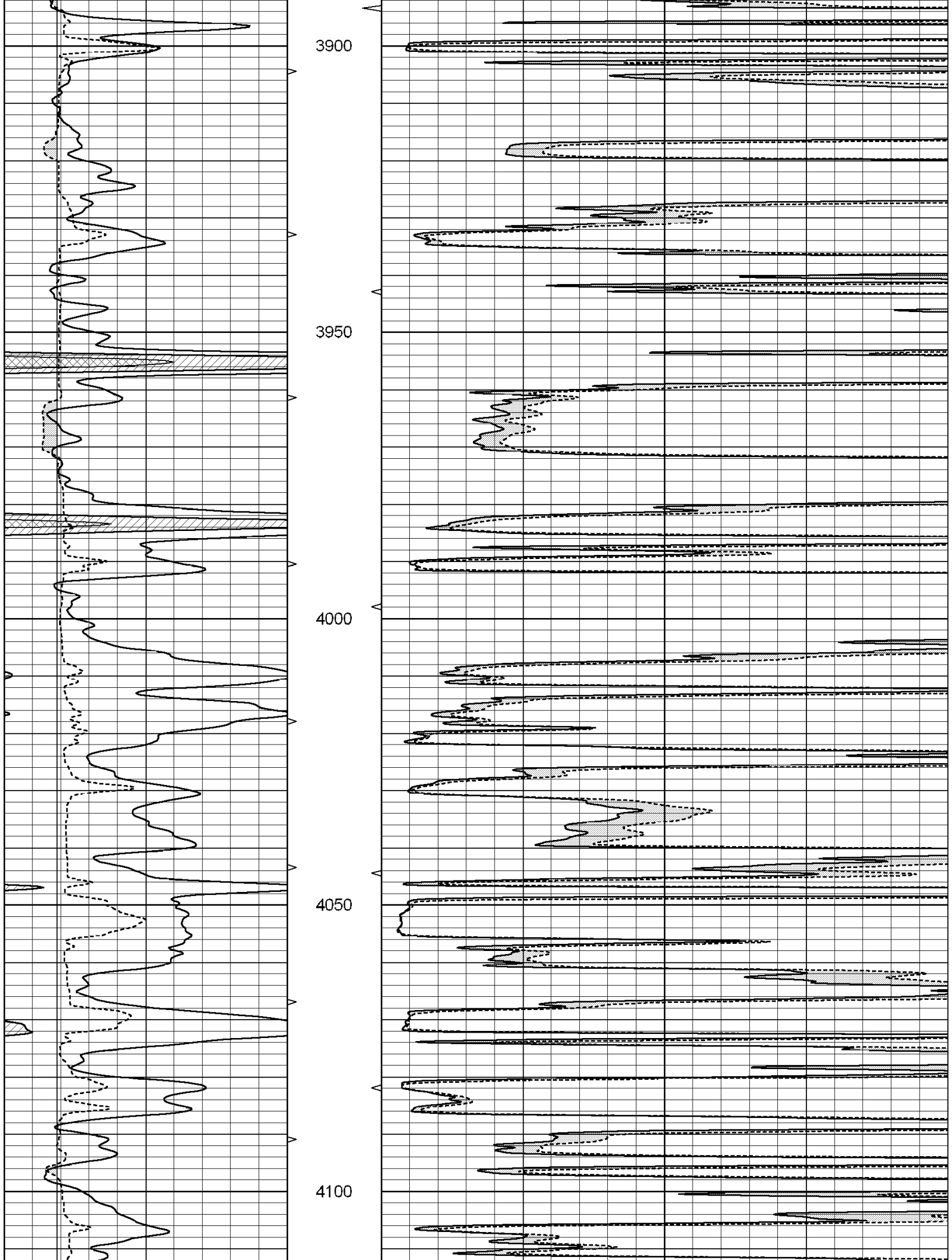
**MAIN SECTION**

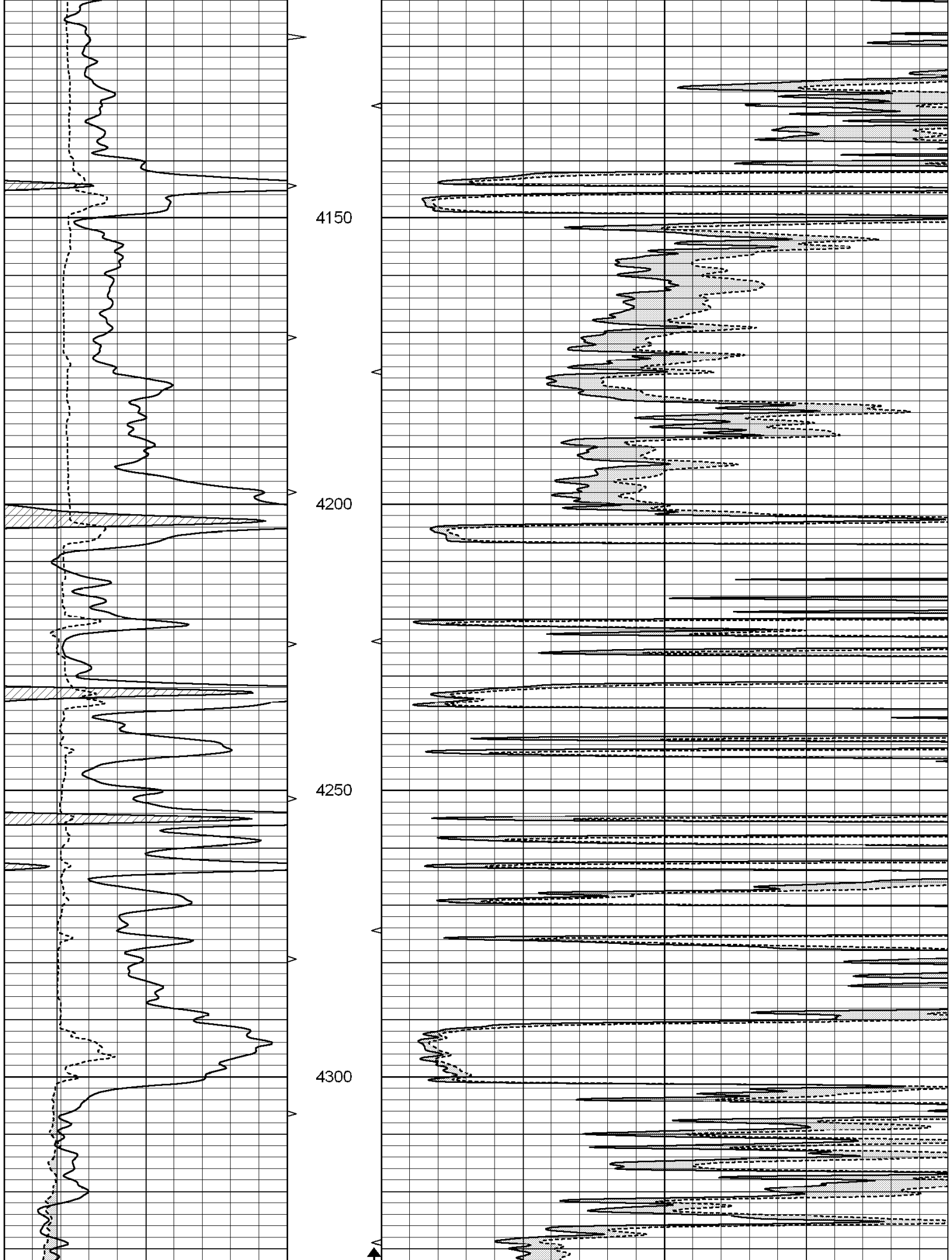
Database File: 003538ddn.db  
 Dataset Pathname: pass6.2  
 Presentation Format: micro  
 Dataset Creation: Wed Jul 08 22:17:35 2009 by Calc Open-Cased 060407  
 Charted by: Depth in Feet scaled 1:240

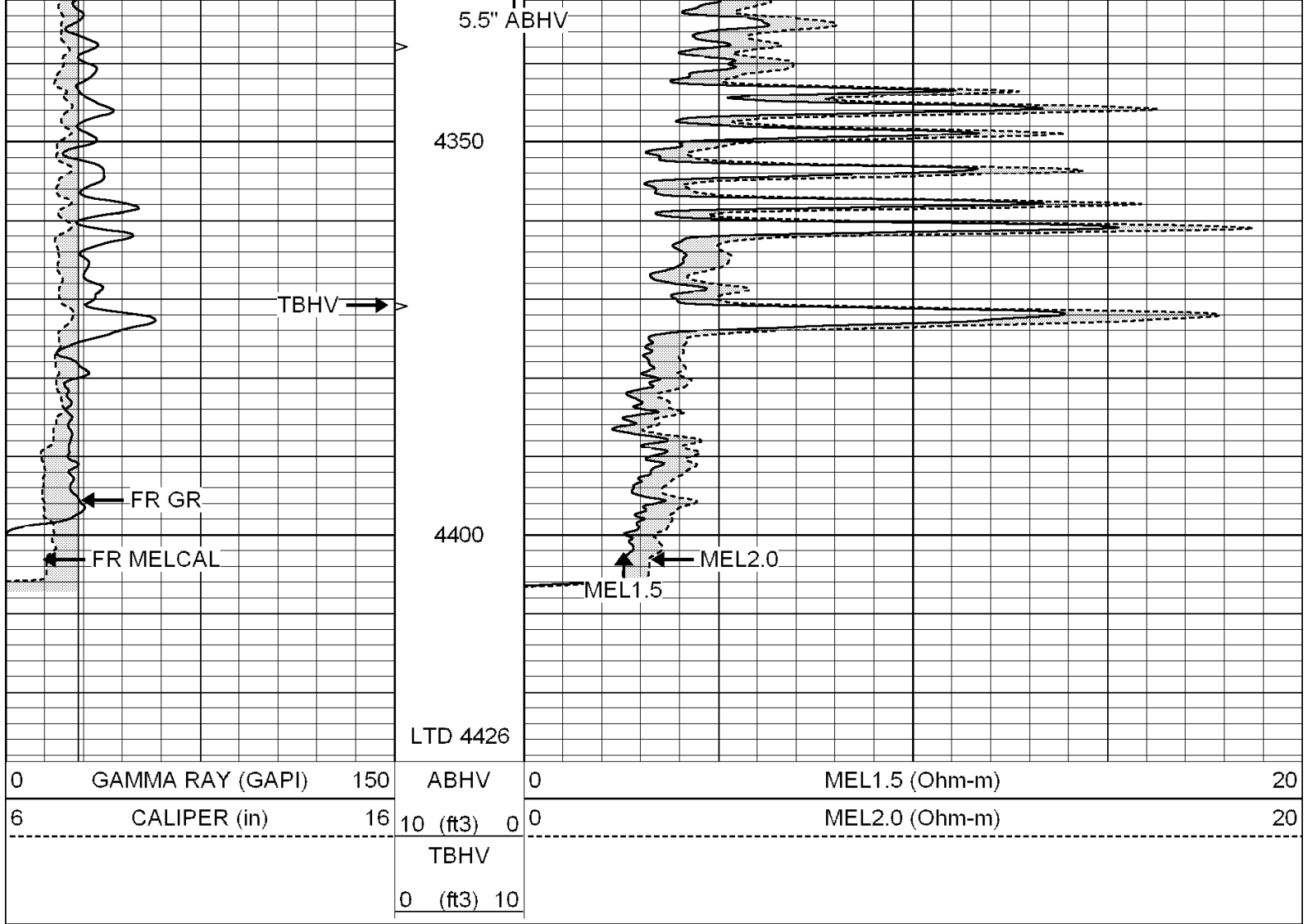
0	GAMMA RAY (GAPI)	150	ABHV	0	MEL1.5 (Ohm-m)	20
6	CALIPER (in)	16	10 (ft3) 0	0	MEL2.0 (Ohm-m)	20
			TBHV			
			0 (ft3) 10			









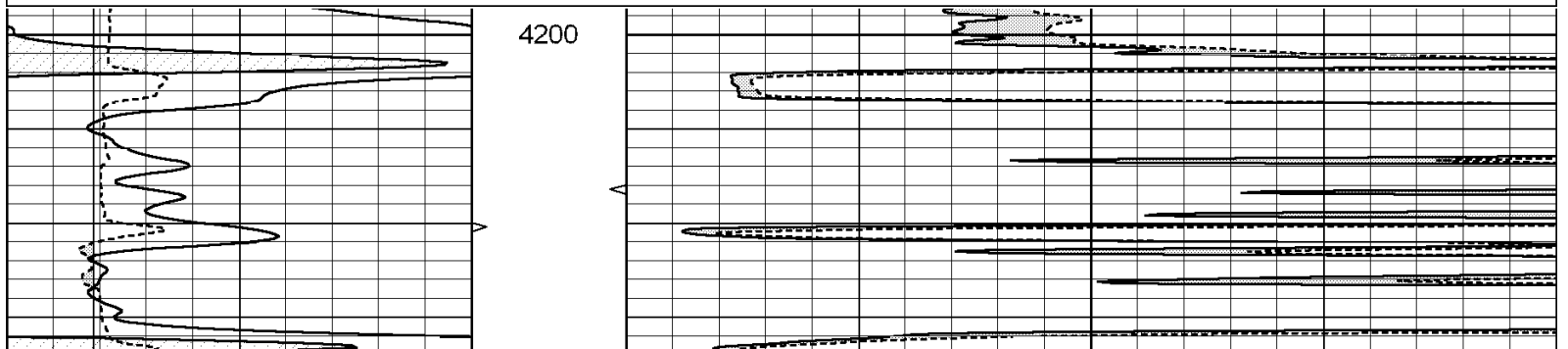


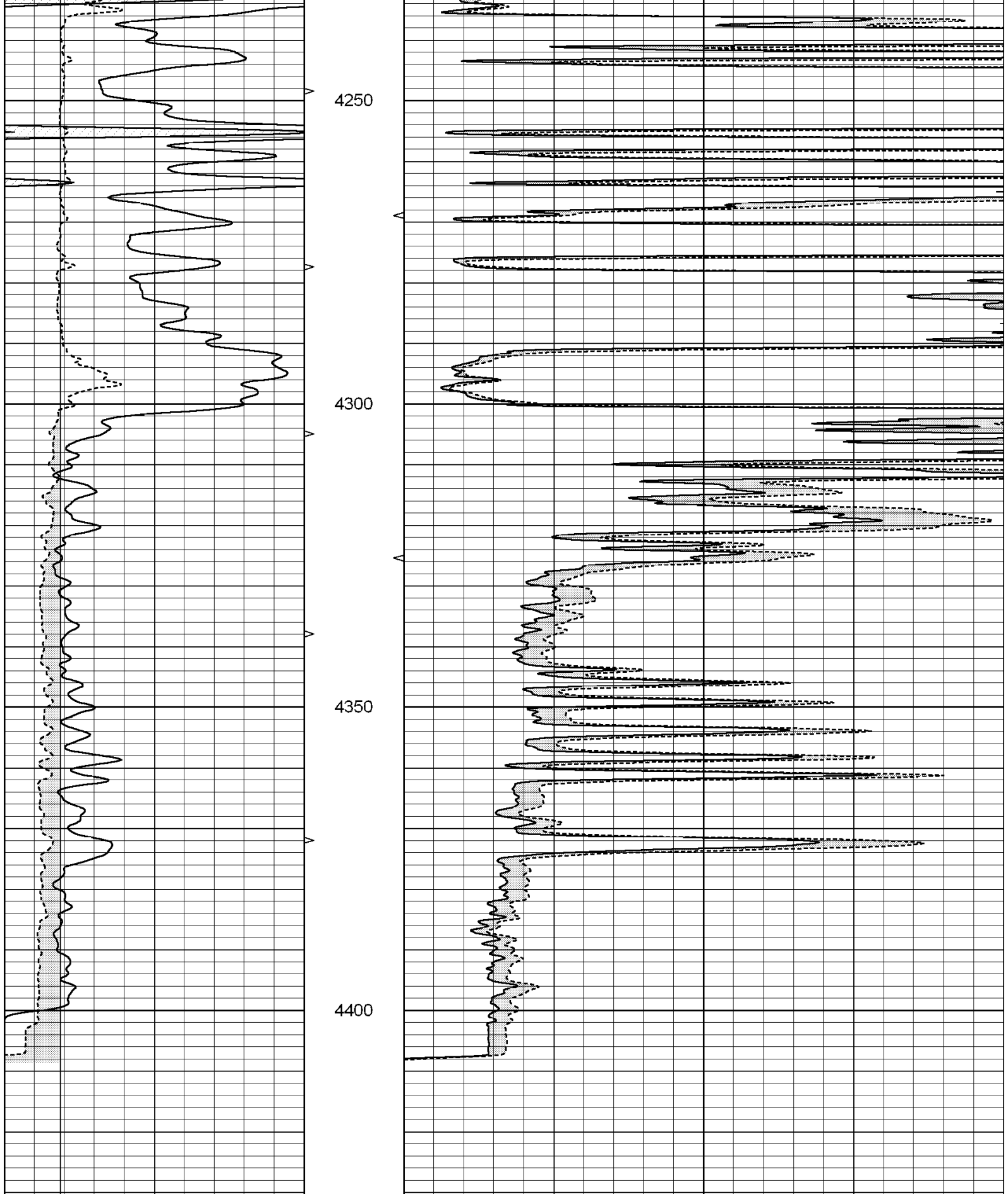
SUPERIOR  
Hays,  
Kansas

# REPEAT SECTION

Database File: 003538ddn.db  
 Dataset Pathname: pass5.3  
 Presentation Format: micro  
 Dataset Creation: Wed Jul 08 22:04:19 2009 by Calc Open-Cased 060407  
 Charted by: Depth in Feet scaled 1:240

0	GAMMA RAY (GAPI)	150	ABHV	0	MEL1.5 (Ohm-m)	20
6	CALIPER (in)	16	10 (ft3)	0	MEL2.0 (Ohm-m)	20
			TBHV			
			0 (ft3)	10		





0	GAMMA RAY (GAPI)	150	ABHV	0	MEL1.5 (Ohm-m)	20
6	CALIPER (in)	16	10 (ft3)	0	MEL2.0 (Ohm-m)	20
			TBHV			
			0 (ft3)	10		

Calibration Report

Database File: 003538ddn.db  
 Dataset Pathname: pass6.2  
 Dataset Creation: Wed Jul 08 22:17:35 2009 by Calc Open-Cased 060407

MICRO Calibration Report

Serial Number:	MICRO5	
Tool Model:	PROBE	
Performed:	Wed Jul 08 21:00:05 2009	
Caliper Calibration:	Gain=3.757	Offset=-6.497
	Low Cal	High Cal
References	6.400	15.000
Readings	3.433	5.721
1.5" Calibration:	Gain=30.000	Offset=-1.400
	Low Cal	High Cal
References	0.000	20.000
Readings	0.025	0.991
2" Calibration:	Gain=42.000	Offset=-1.700
	Low Cal	High Cal
References	0.000	20.000
Readings	0.018	0.809

Gamma Ray Calibration Report

Serial Number:	GR3	
Tool Model:	OPEN	
Performed:	Wed Jul 08 21:00:01 2009	
Calibrator Value:	200.0	GAPI
Background Reading:	3.0	cps
Calibrator Reading:	186.0	cps
Sensitivity:	0.8000	GAPI/cps