



SUPERIOR
Hays,
Kansas

SONIC
LOG

Company MULL DRILLING COMPANY, INC.
Well #1-13 GARVEY UNIT
Field WILDCAT
County GOVE
State KANSAS

Company MULL DRILLING COMPANY, INC.
Well #1-13 GARVEY UNIT
Field WILDCAT
County GOVE State KANSAS

Location: API #: 15-063-21779-0000
1811' FSL & 231' FEL
SEC 13 TWP 15S RGE 27W
Permanent Datum GROUND LEVEL Elevation 2458
Log Measured From KELLY BUSHING 9' A.G.L.
Drilling Measured From KELLY BUSHING
Other Services
CDL/CNL
DIL/MEL
Elevation
K.B. 2467
D.F. 2465
G.L. 2458

Date	7/8/09
Run Number	TWO
Depth Driller	4425
Depth Logger	4426
Bottom Logged Interval	4413
Top Log Interval	200
Casing Driller	8 5/8"@210'
Casing Logger	209
Bit Size	7 7/8
Type Fluid In Hole	CHEMICAL MUD
Density / Viscosity	9.1/52
pH / Fluid Loss	10.0/8.4
Source of Sample	FLOWLINE
Rm @ Meas. Temp	.700@96F
Rmf @ Meas. Temp	.525@96F
Rmc @ Meas. Temp	.840@96F
Source of Rmf / Rmc	MEASUREMENT
Rm @ BHT	.560@120F
Time Circulation Stopped	4.5 HOURS
Time Logger on Bottom	7:30 P.M.
Maximum Recorded Temperature	120F
Equipment Number	0836
Location	HAYS, KANSAS
Recorded By	JEFF LUEBBERS
Witnessed By	KEVIN KESSLER

<<< Fold Here >>>

All interpretations are opinions based on inferences from electrical or other measurements and we cannot and do not guarantee the accuracy or correctness of any interpretation, and we shall not, except in the case of gross or willful negligence on our part, be liable or responsible for any loss, costs, damages, or expenses incurred or sustained by anyone resulting from any interpretation made by any of our officers, agents or employees. These interpretations are also subject to our general terms and conditions set out in our current Price Schedule.

Comments

THANK YOU FOR USING SUPERIOR WELL SERVICE HAYS, KANSAS (785) 628-6395
DIRECTIONS
UTICA, KS. 3W. ON HWY 4 TO CASTLE ROCK RD., 6 1/2N. TO GOVE COUNTY RD. "C", 2E. & N. ON CURVY RD. TO OLD FARMSTEAD. TURN E. BETWEEN LIMESTONE HOUSE & METAL SHED TO PASTURE BEHIND TREES

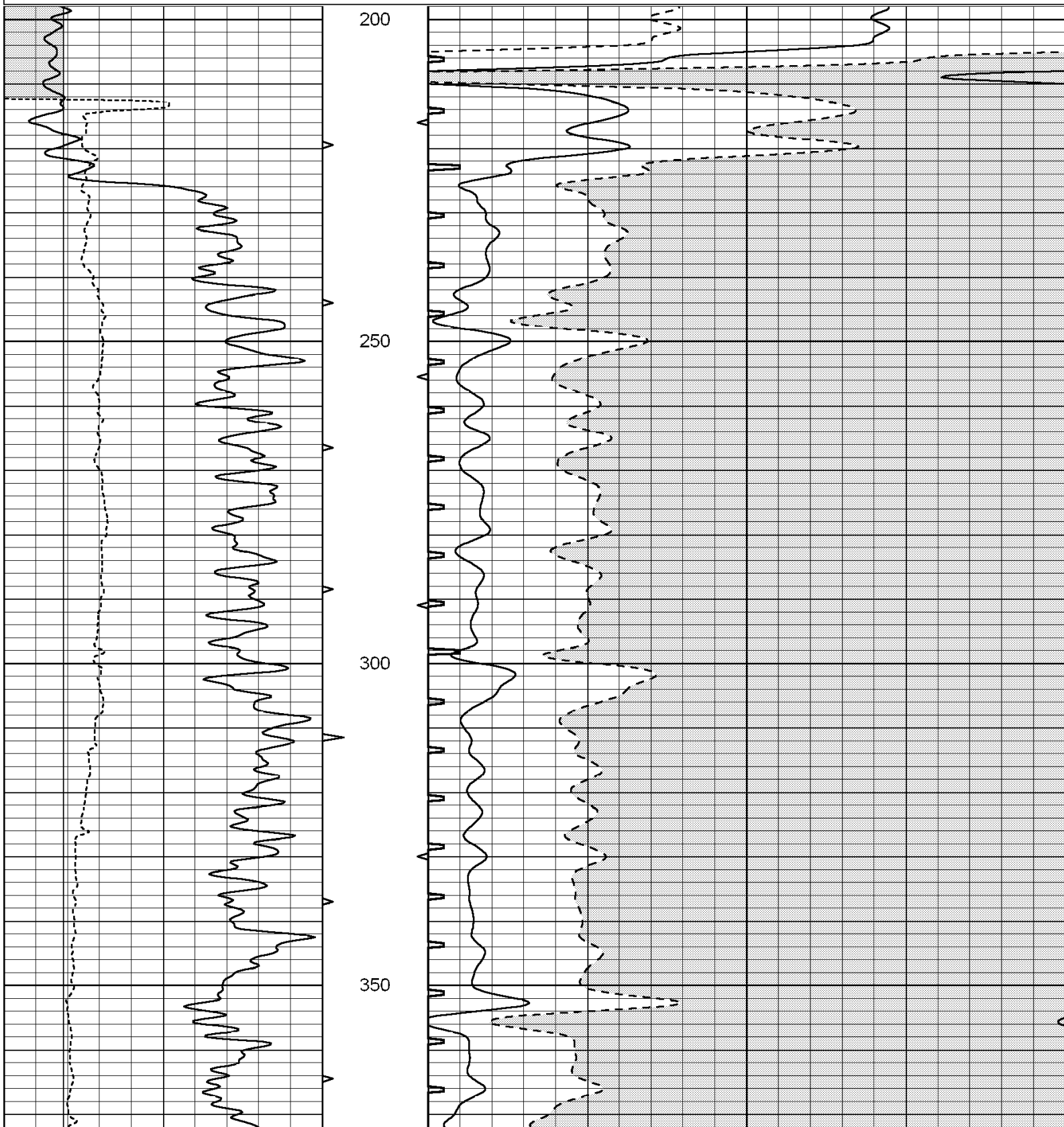


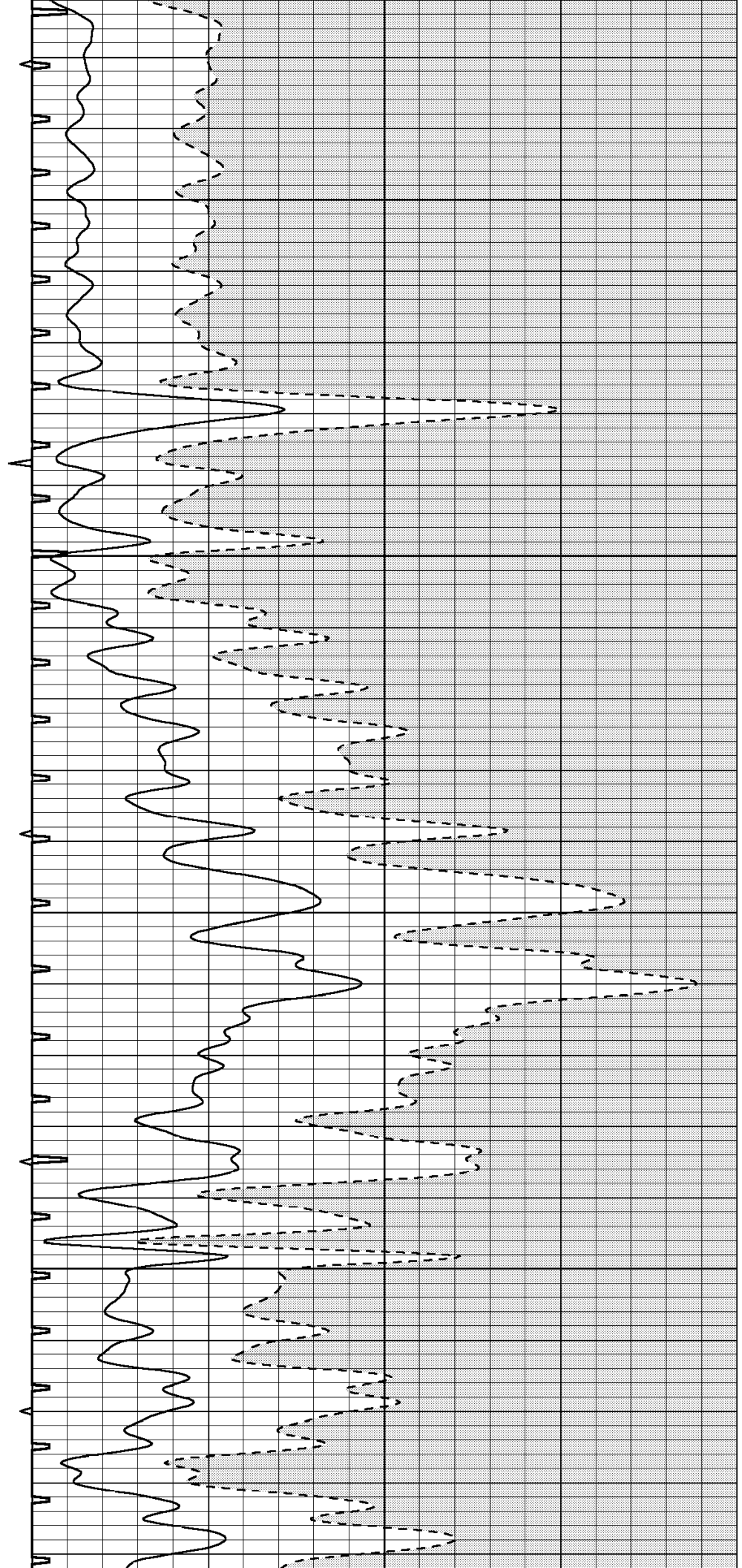
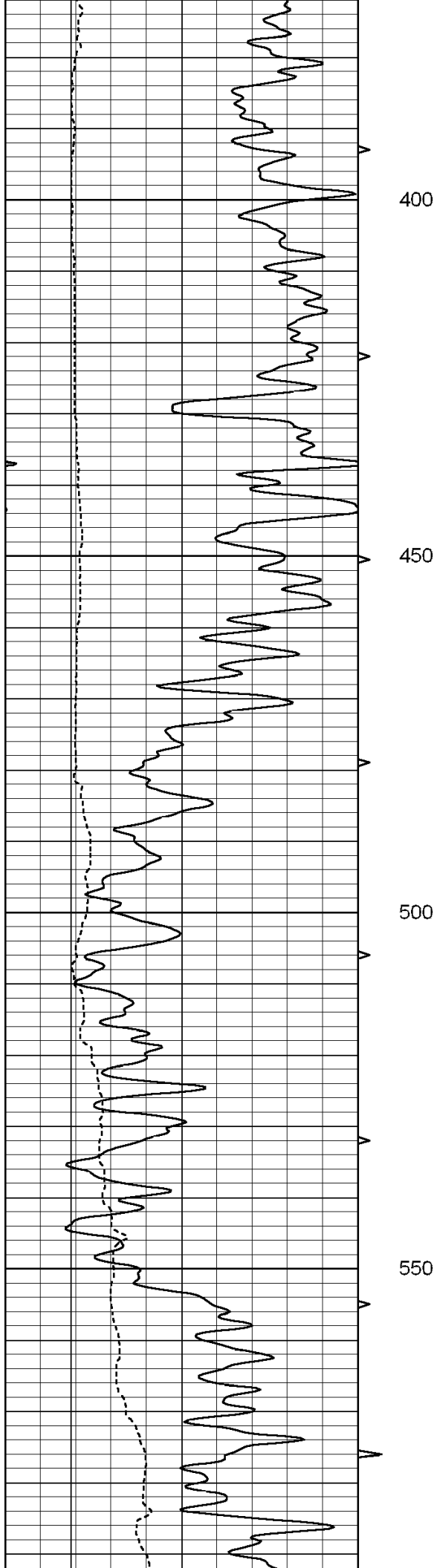
SUPERIOR
Hays,
Kansas

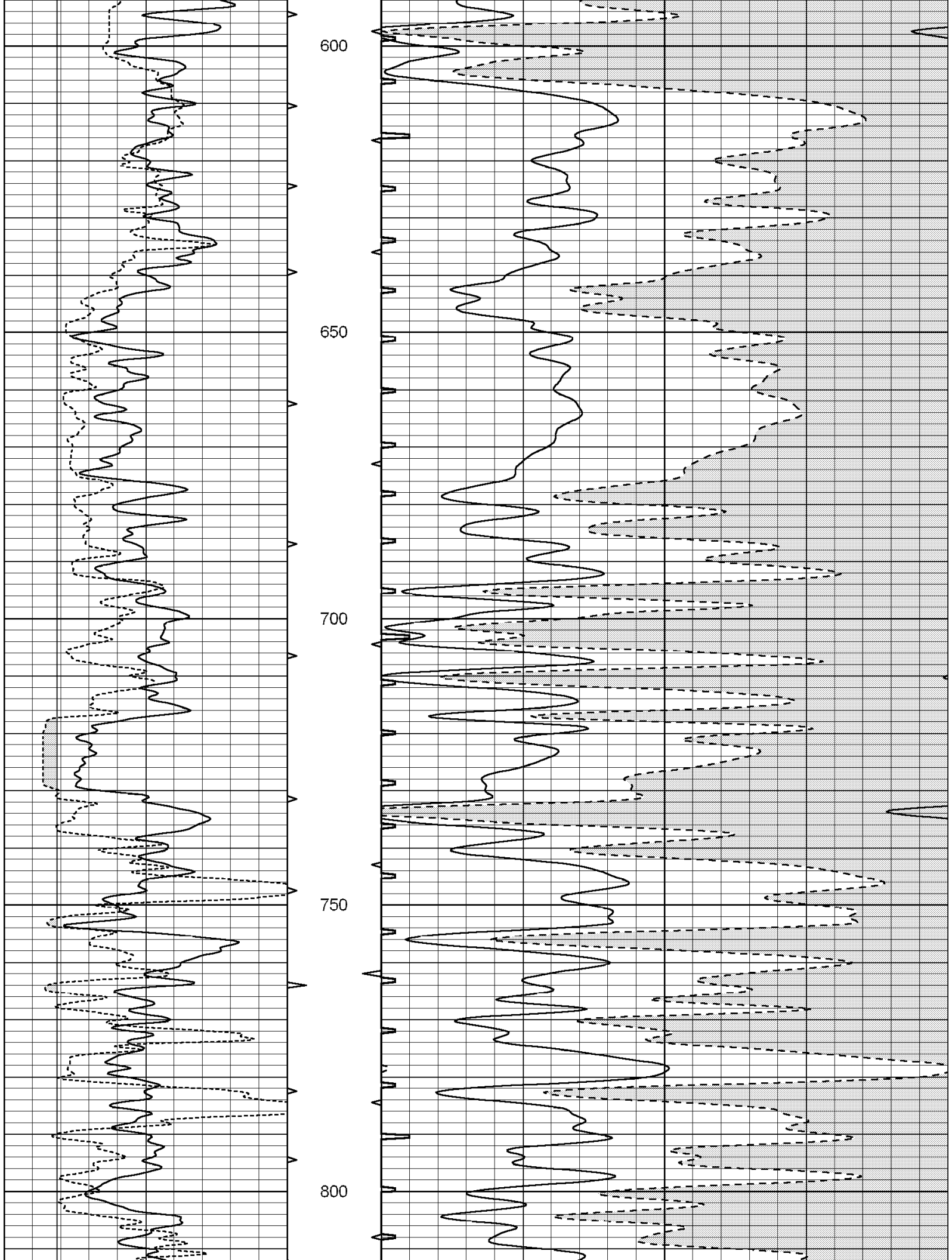
MAIN SECTION

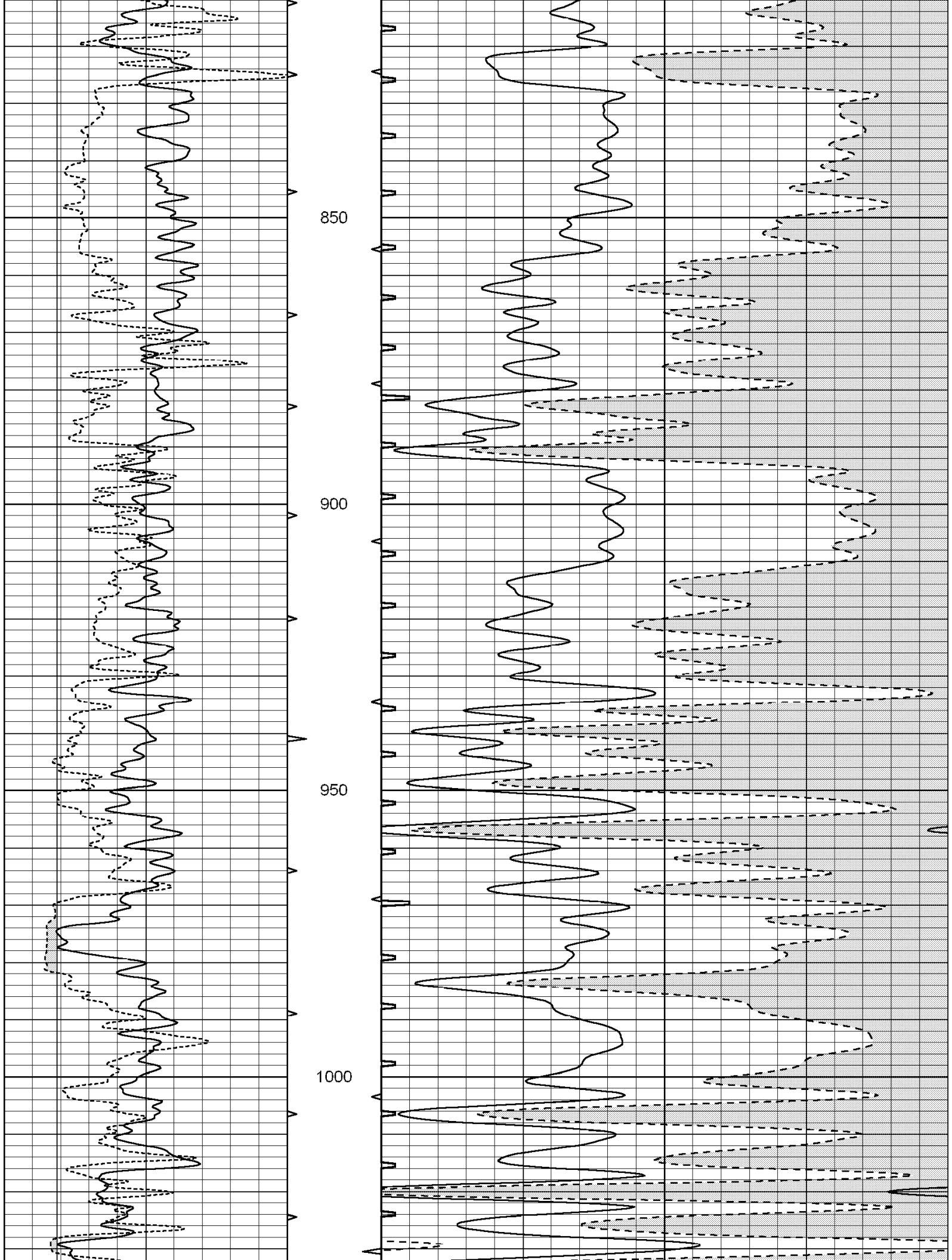
Database File: 003538ddn.db
 Dataset Pathname: pass6.3
 Presentation Format: slt
 Dataset Creation: Wed Jul 08 23:06:15 2009 by Calc Open-Cased 060407
 Charted by: Depth in Feet scaled 1:240

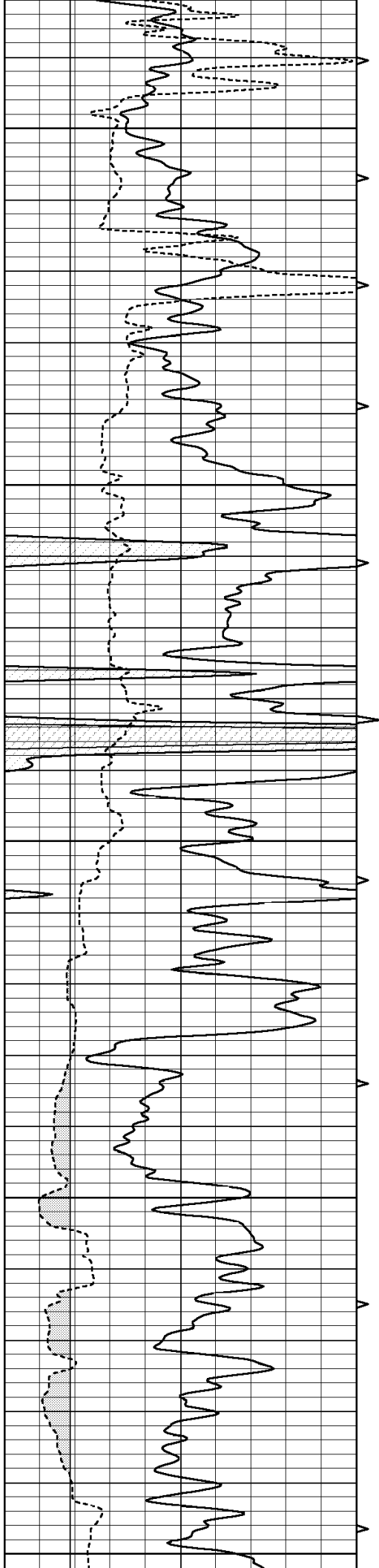
0	GAMMA RAY (GAPI)	150	ABHV	140	DELTA TIME (usec/ft)	40
6	CALIPER (in)	16	10 (ft3) 0	30	SONIC POROSITY (pu)	-10
			TBHV	0	ITT (msec)	20
			0 (ft3) 10			











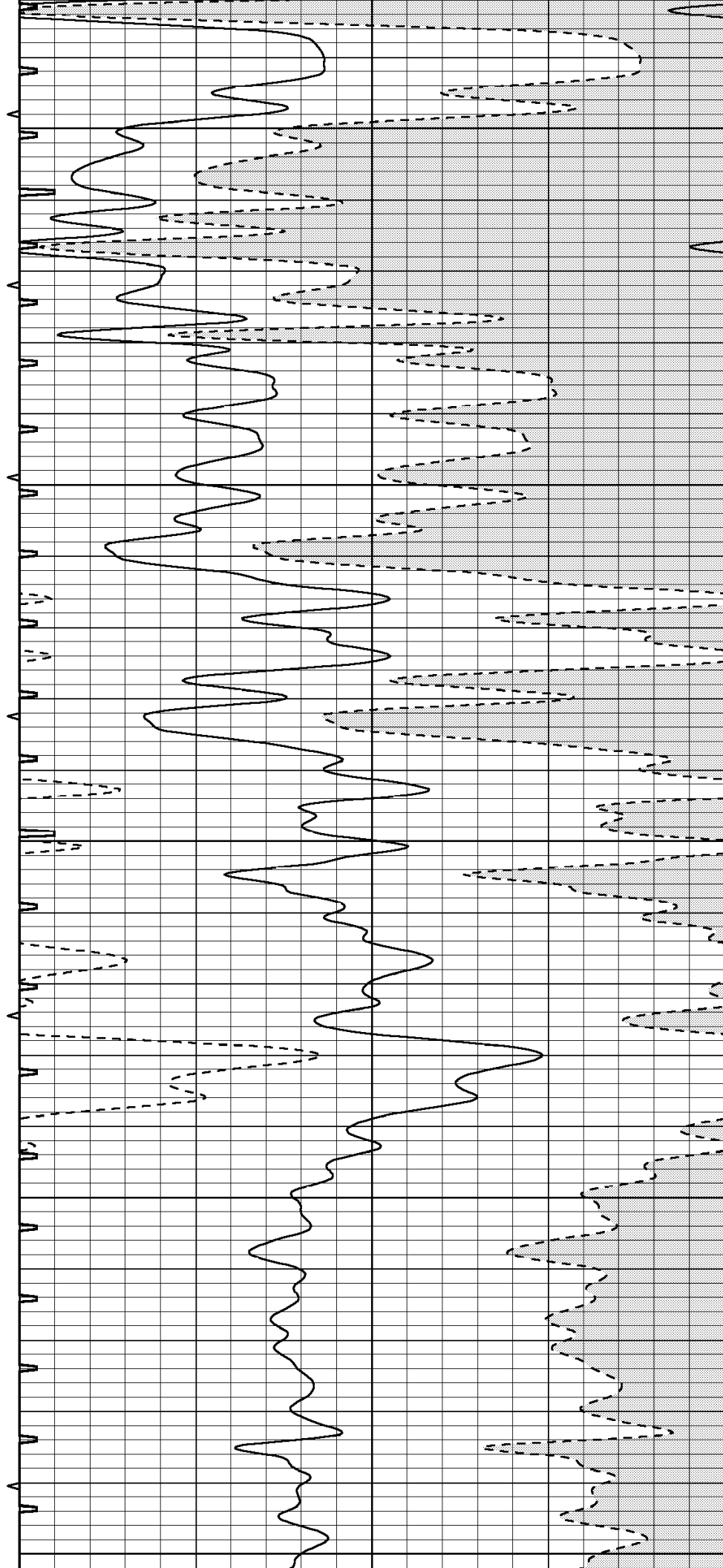
1050

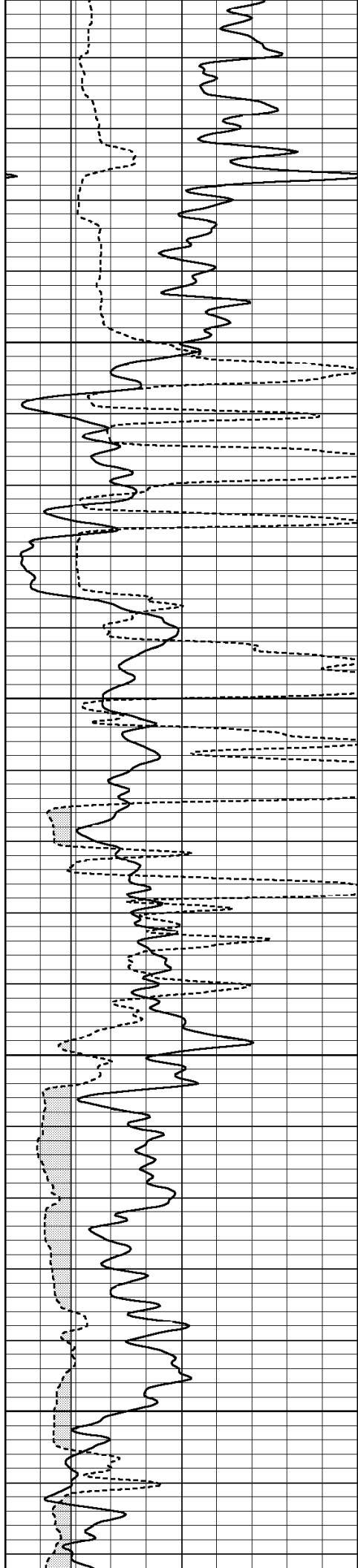
1100

1150

1200

1250



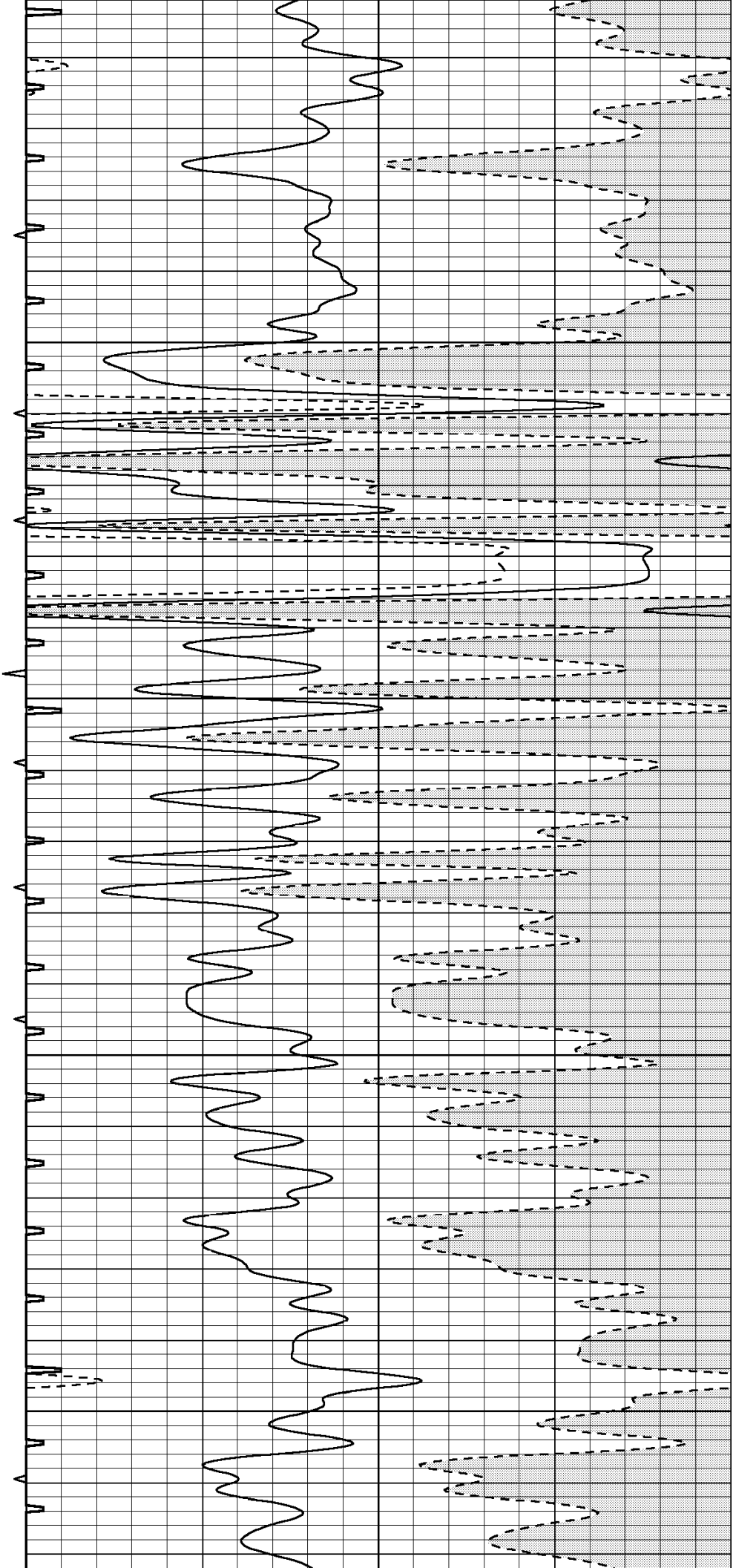


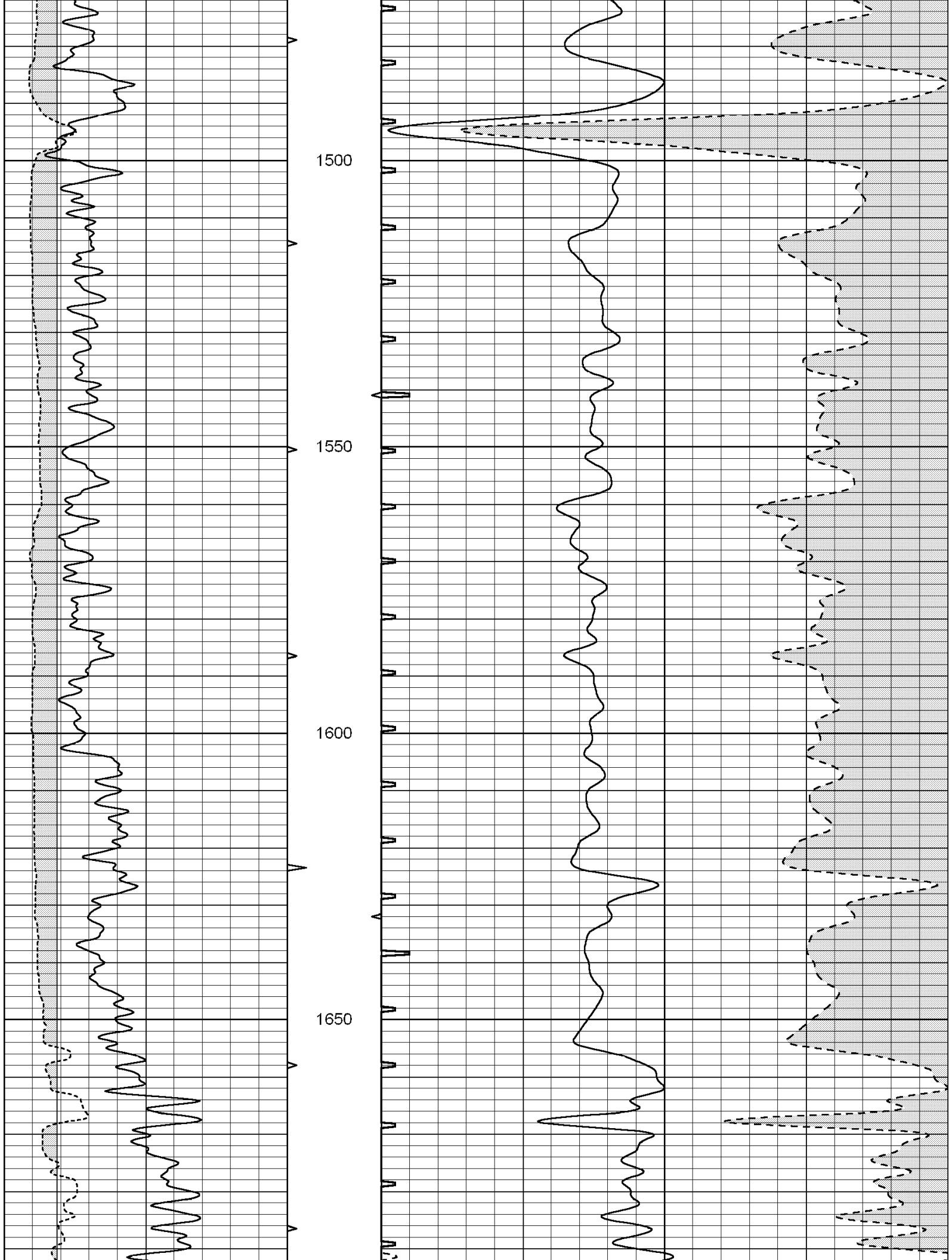
1300

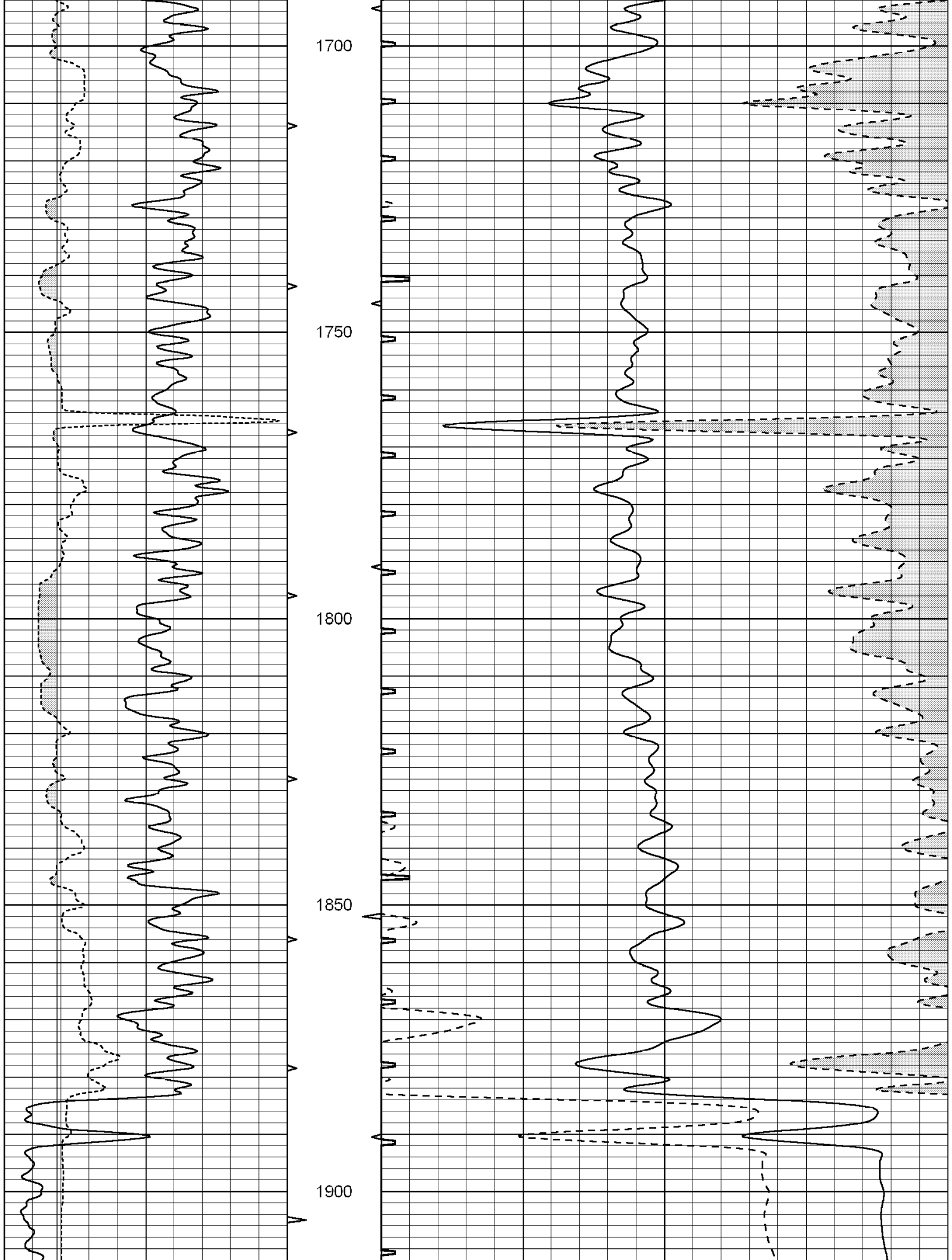
1350

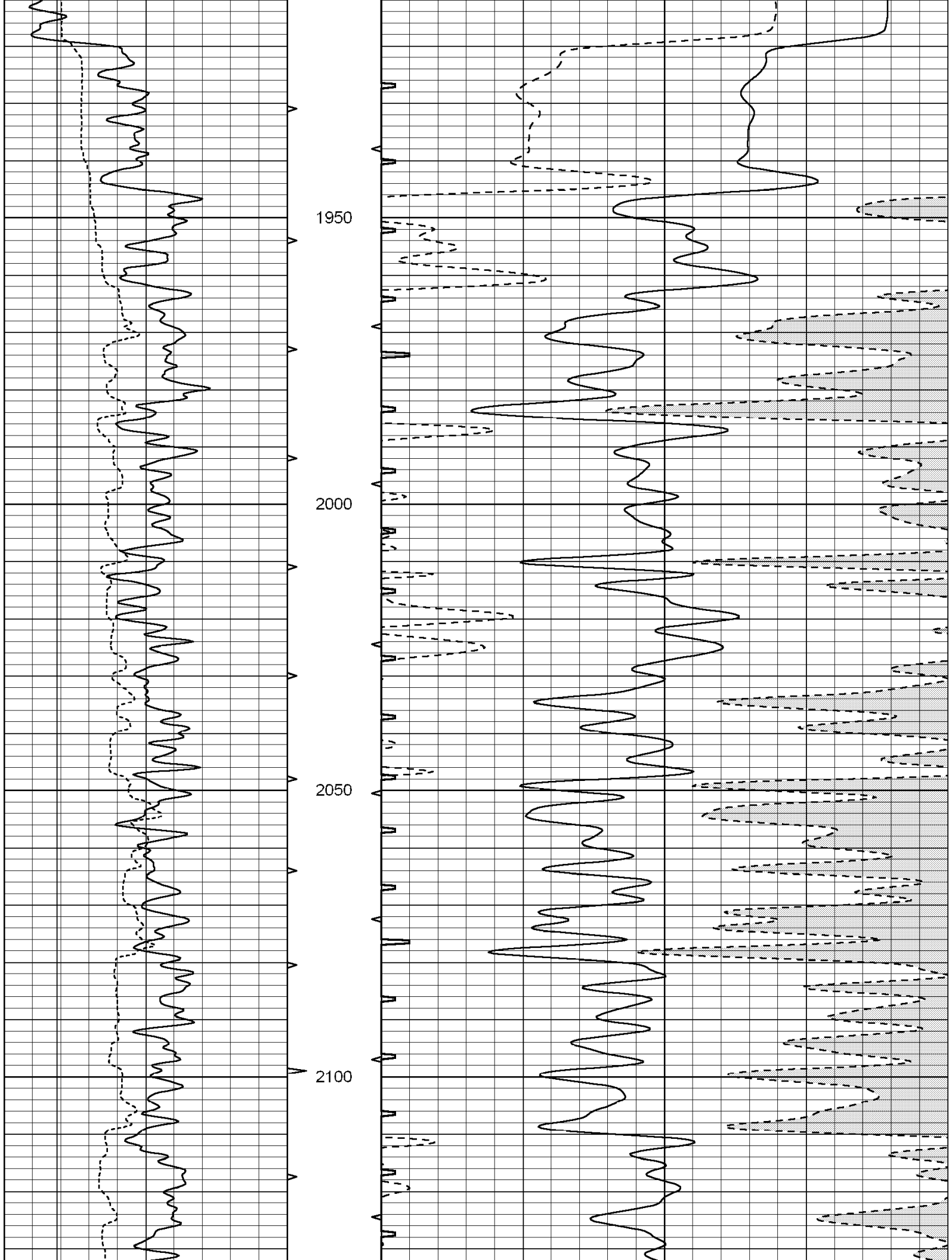
1400

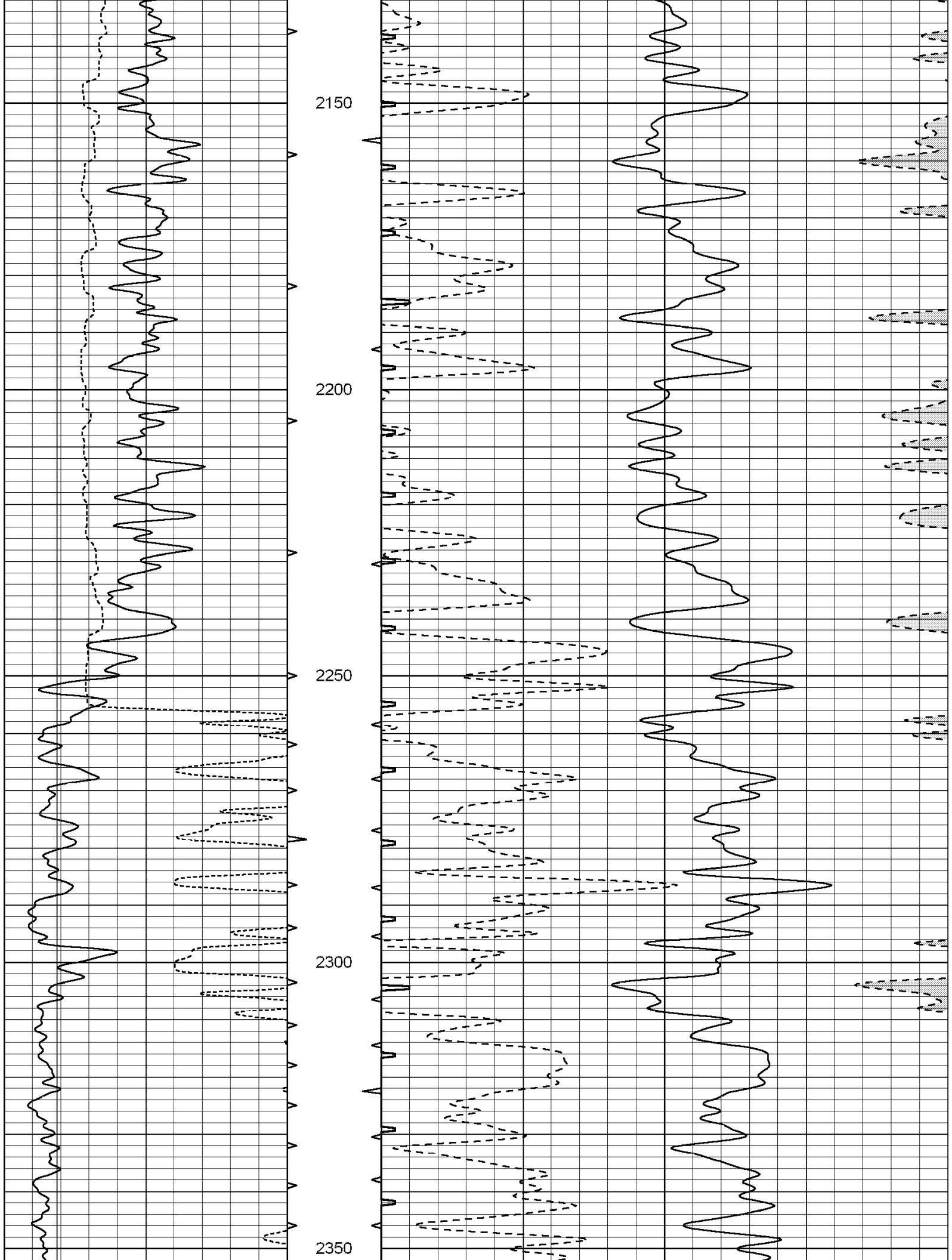
1450

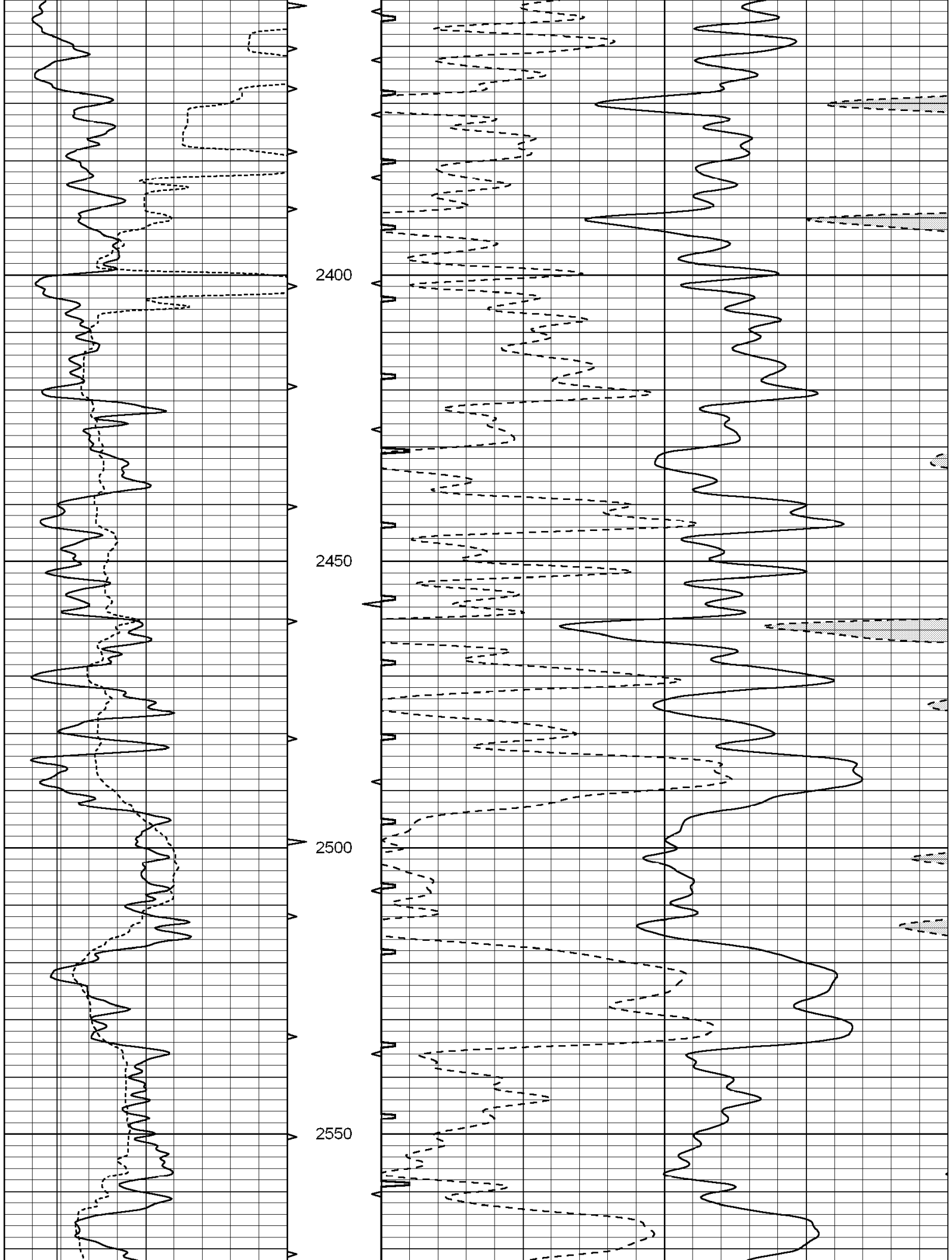


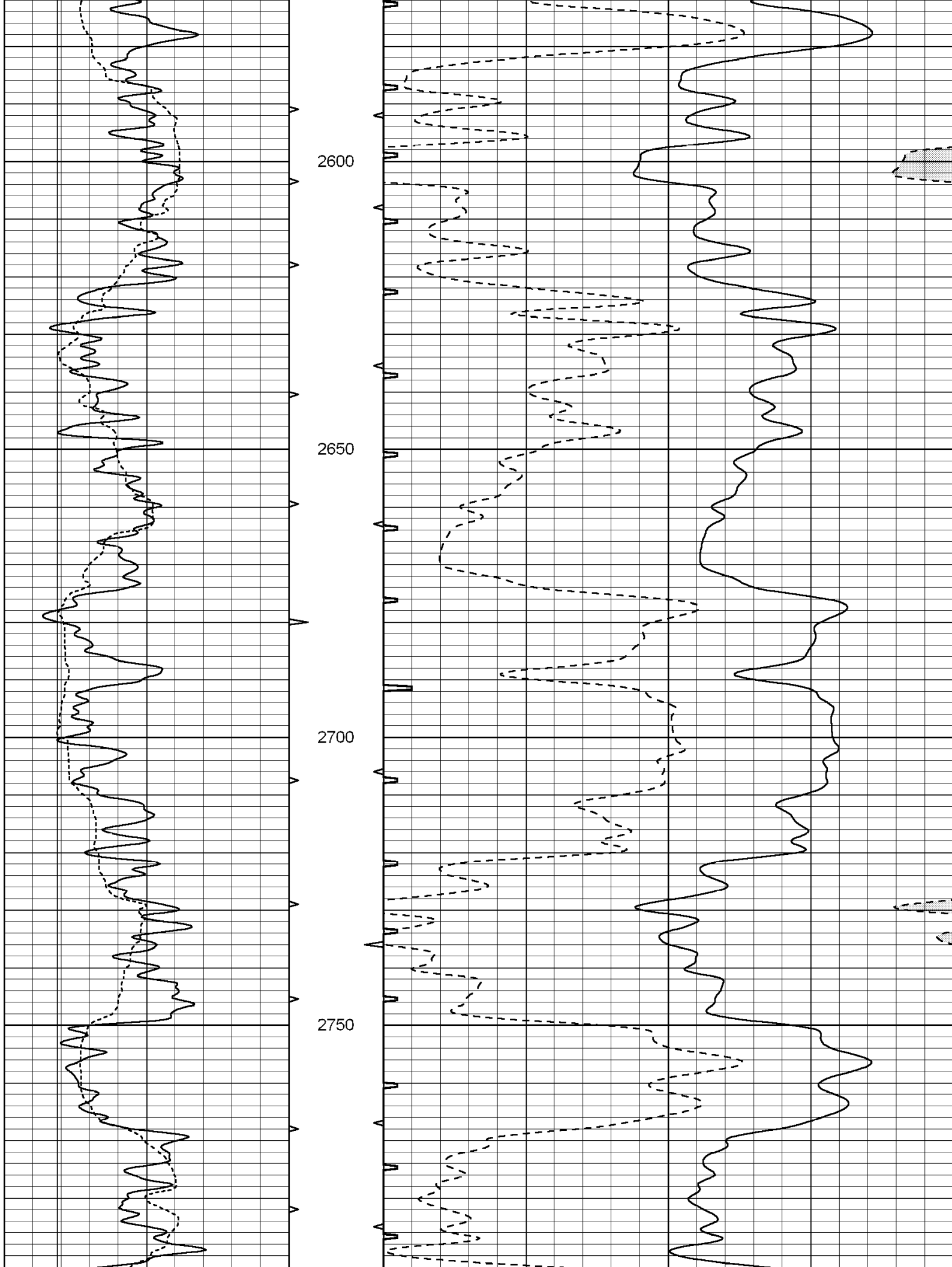


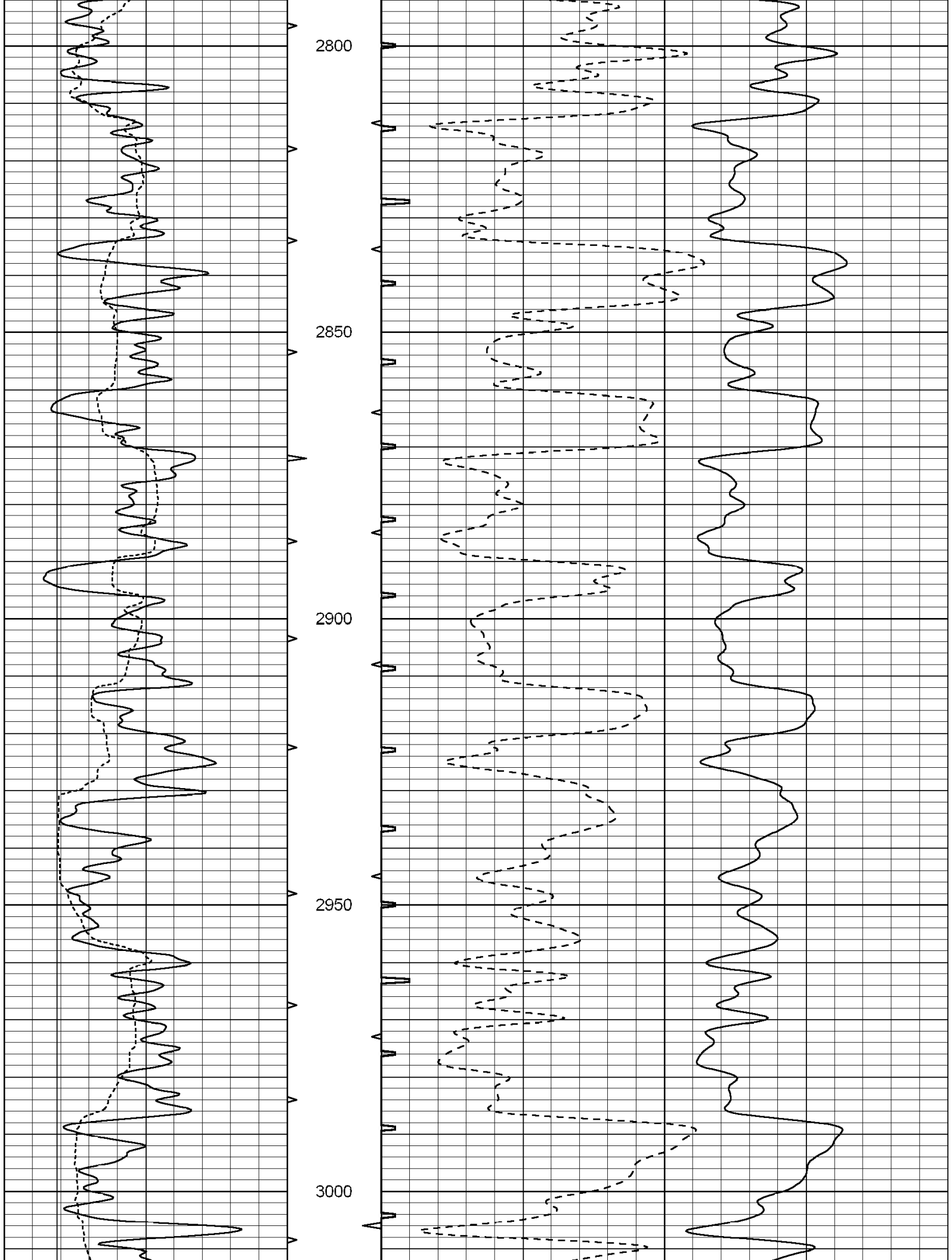


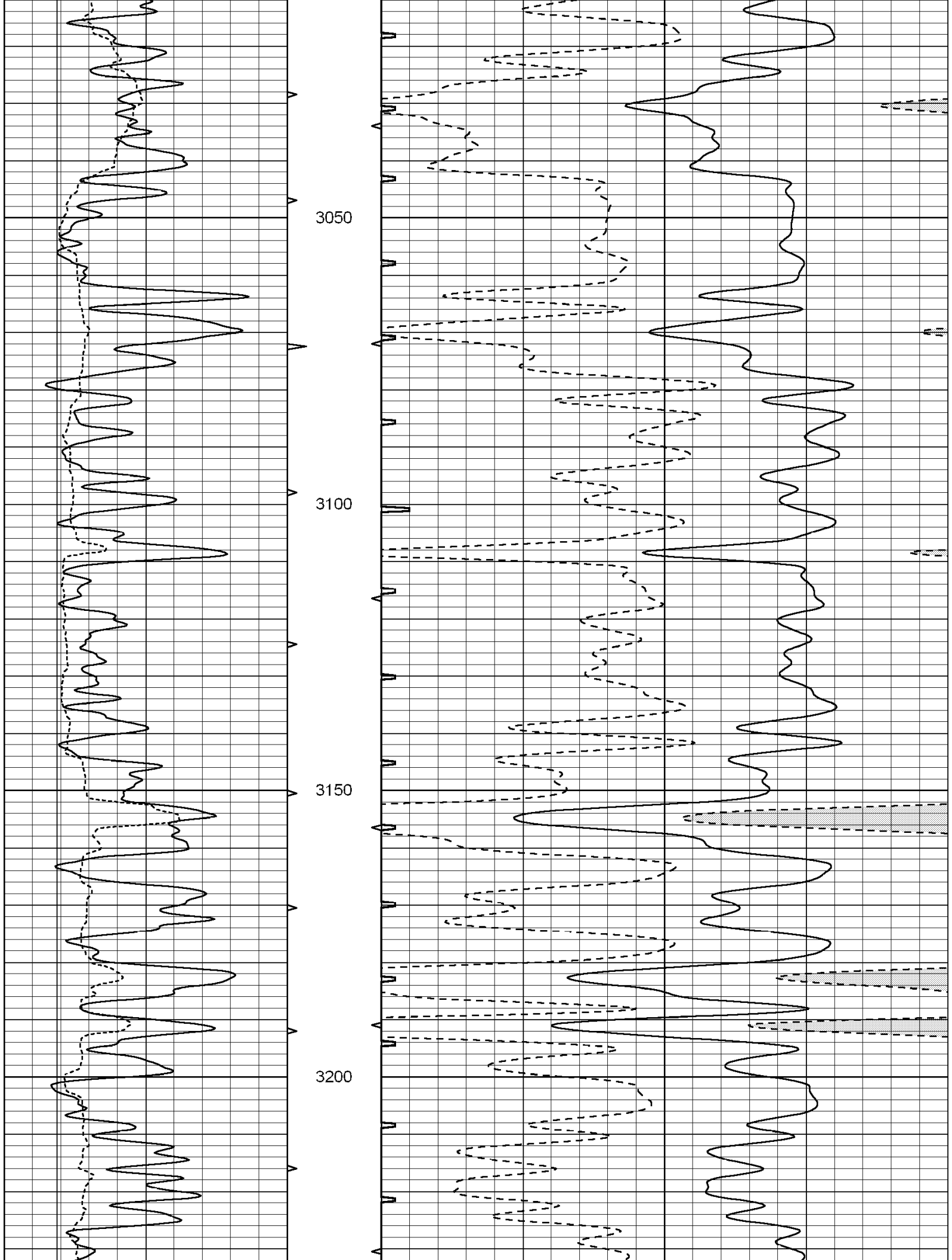


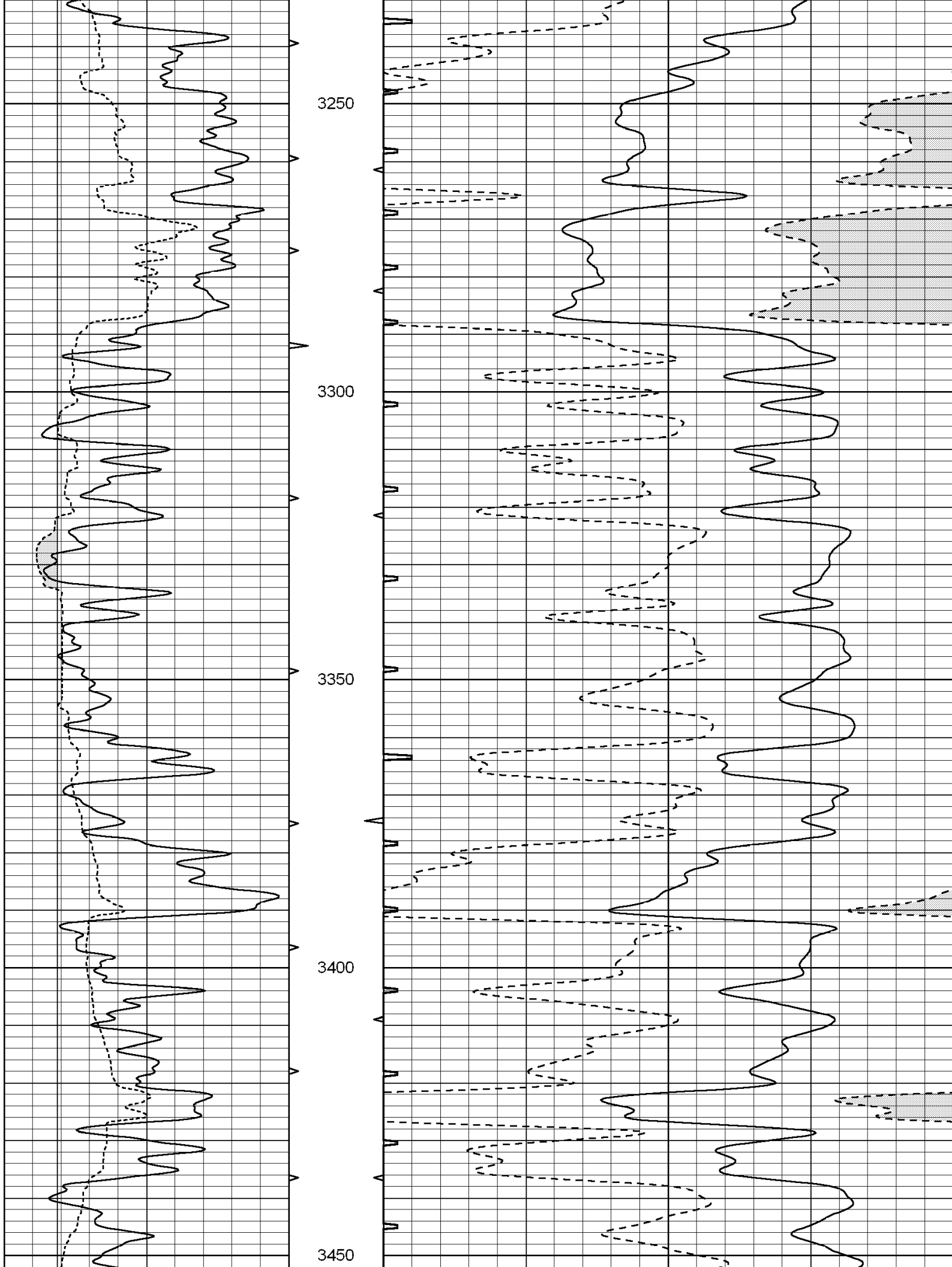


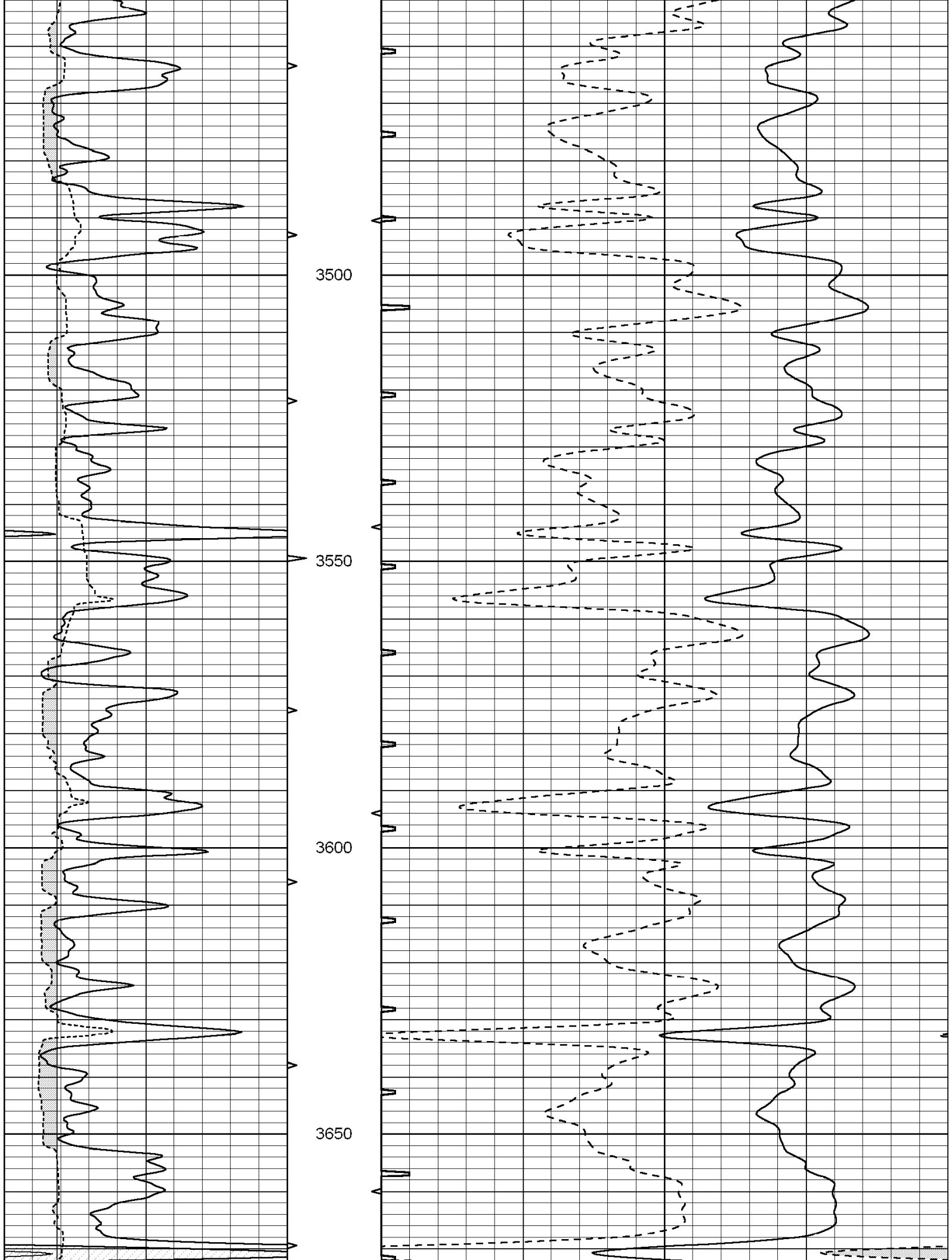


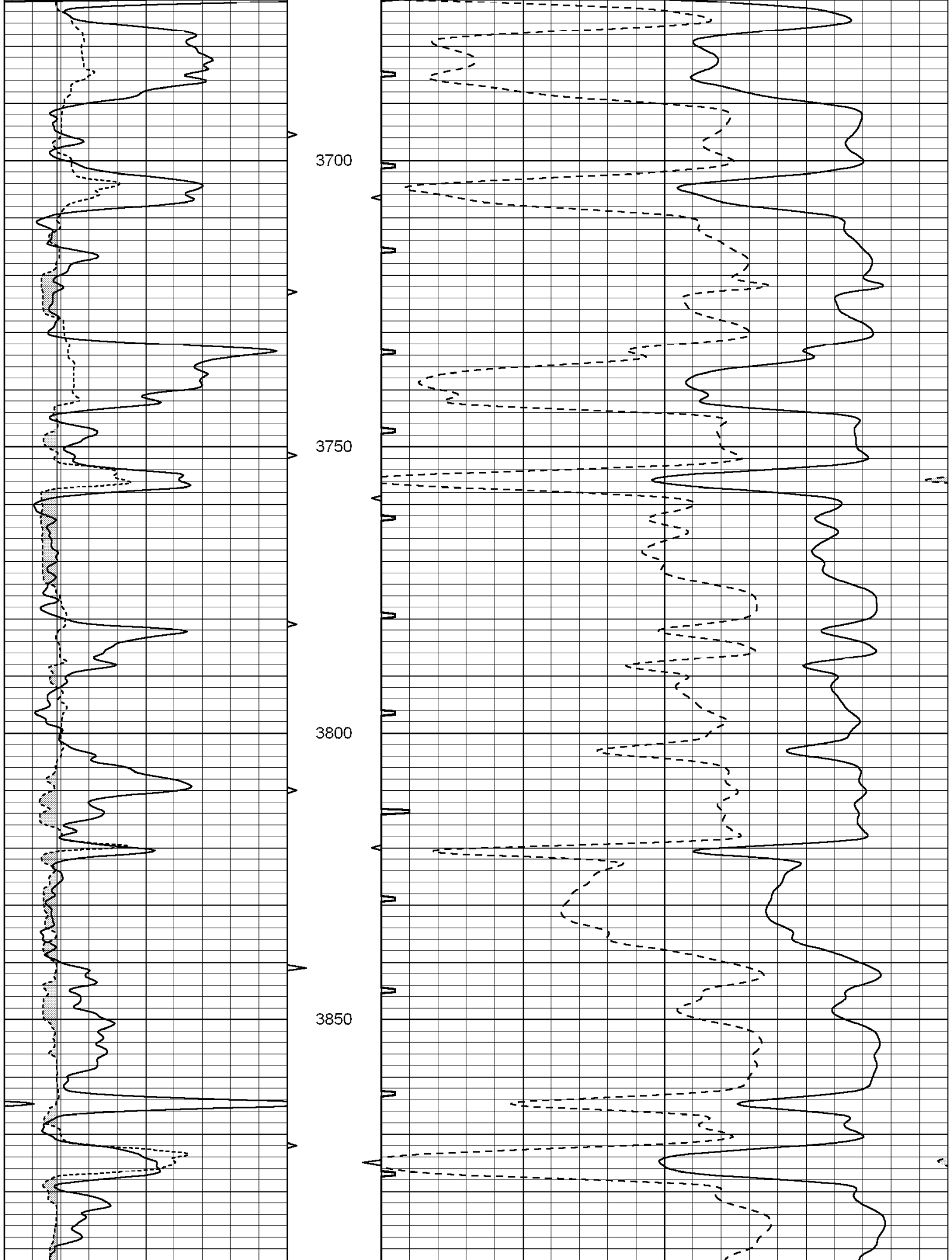


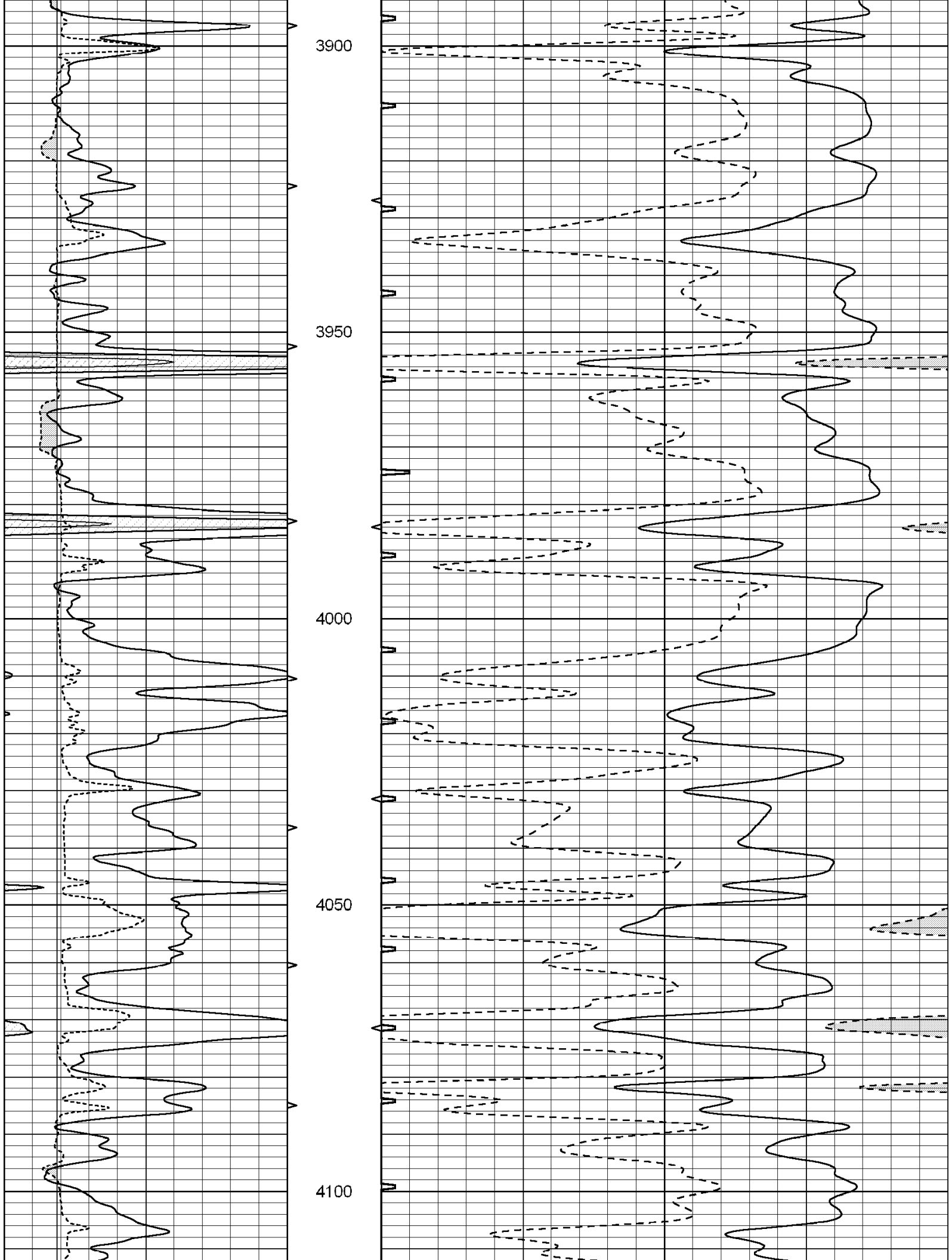


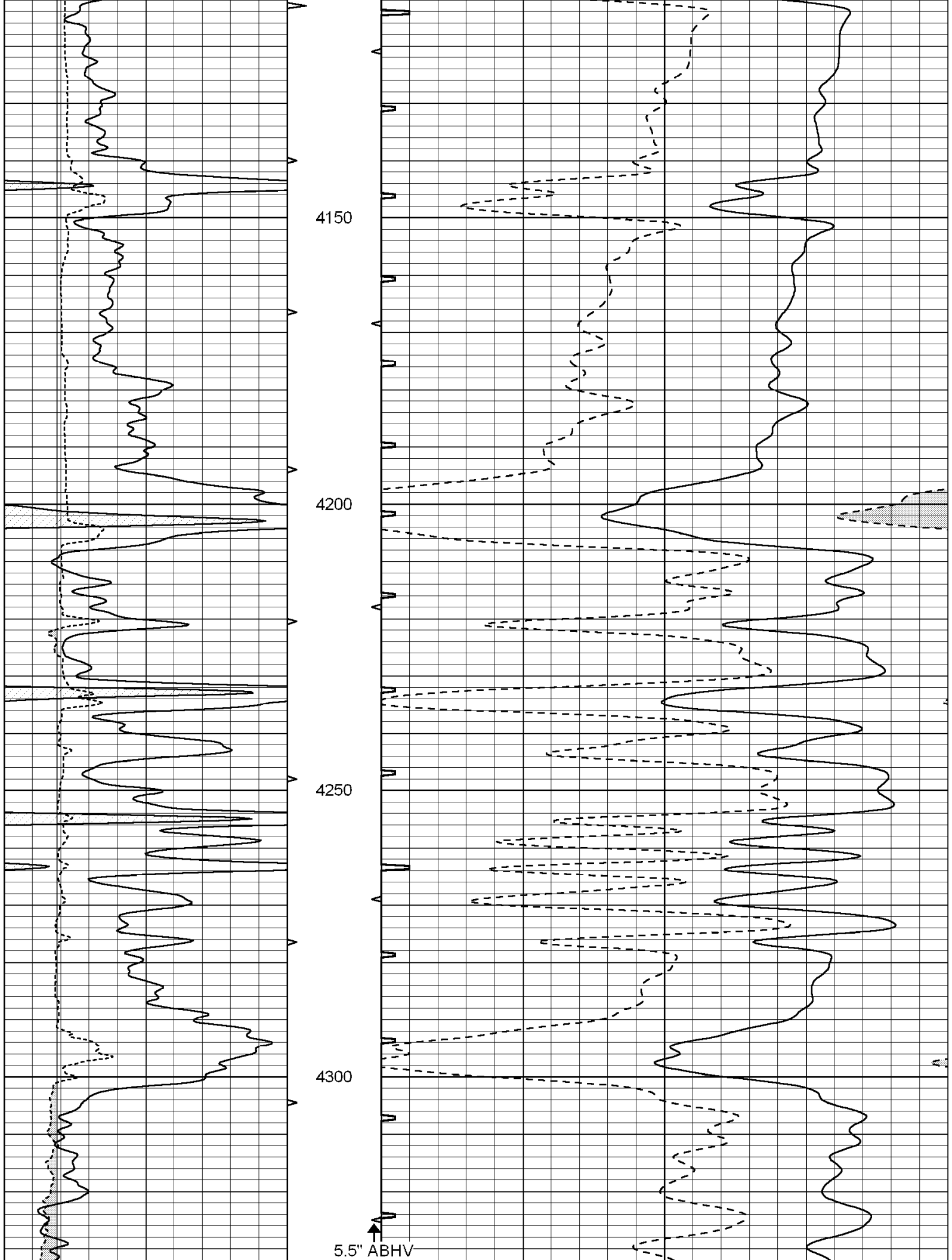


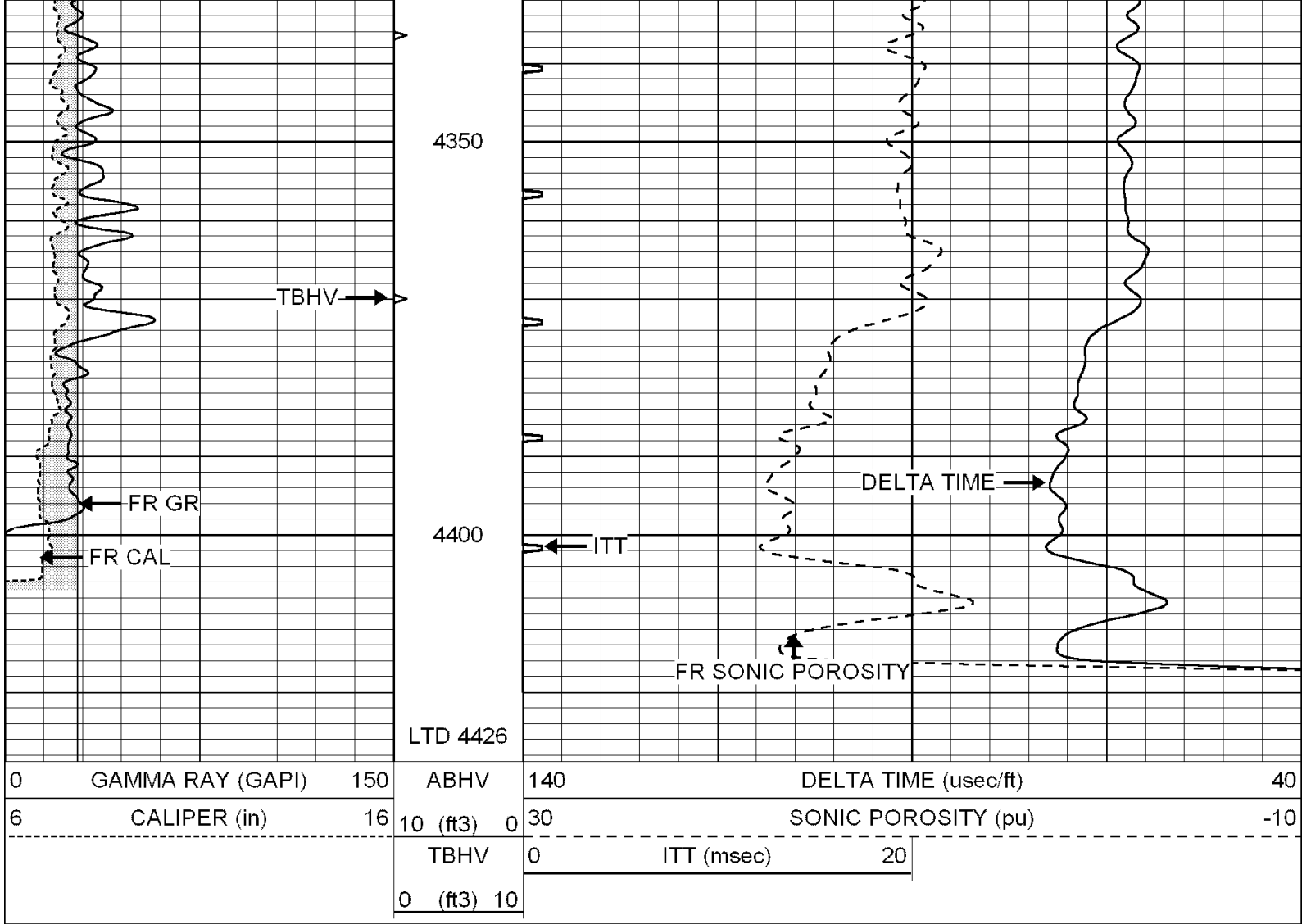








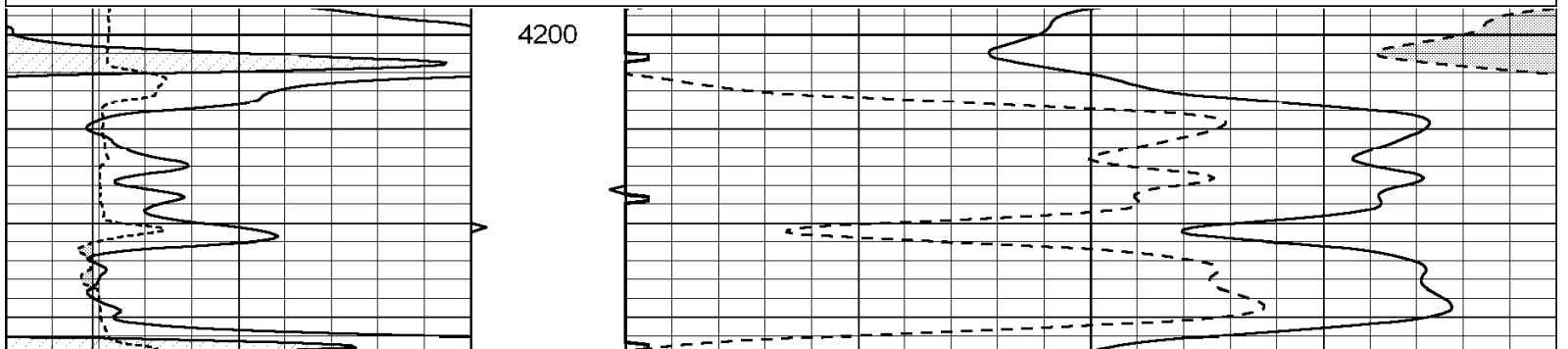
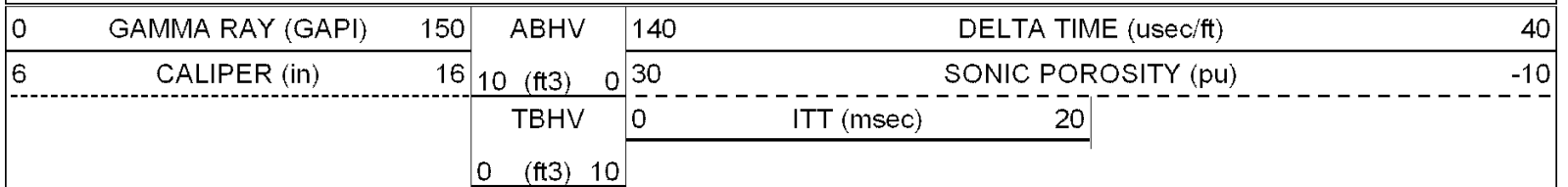


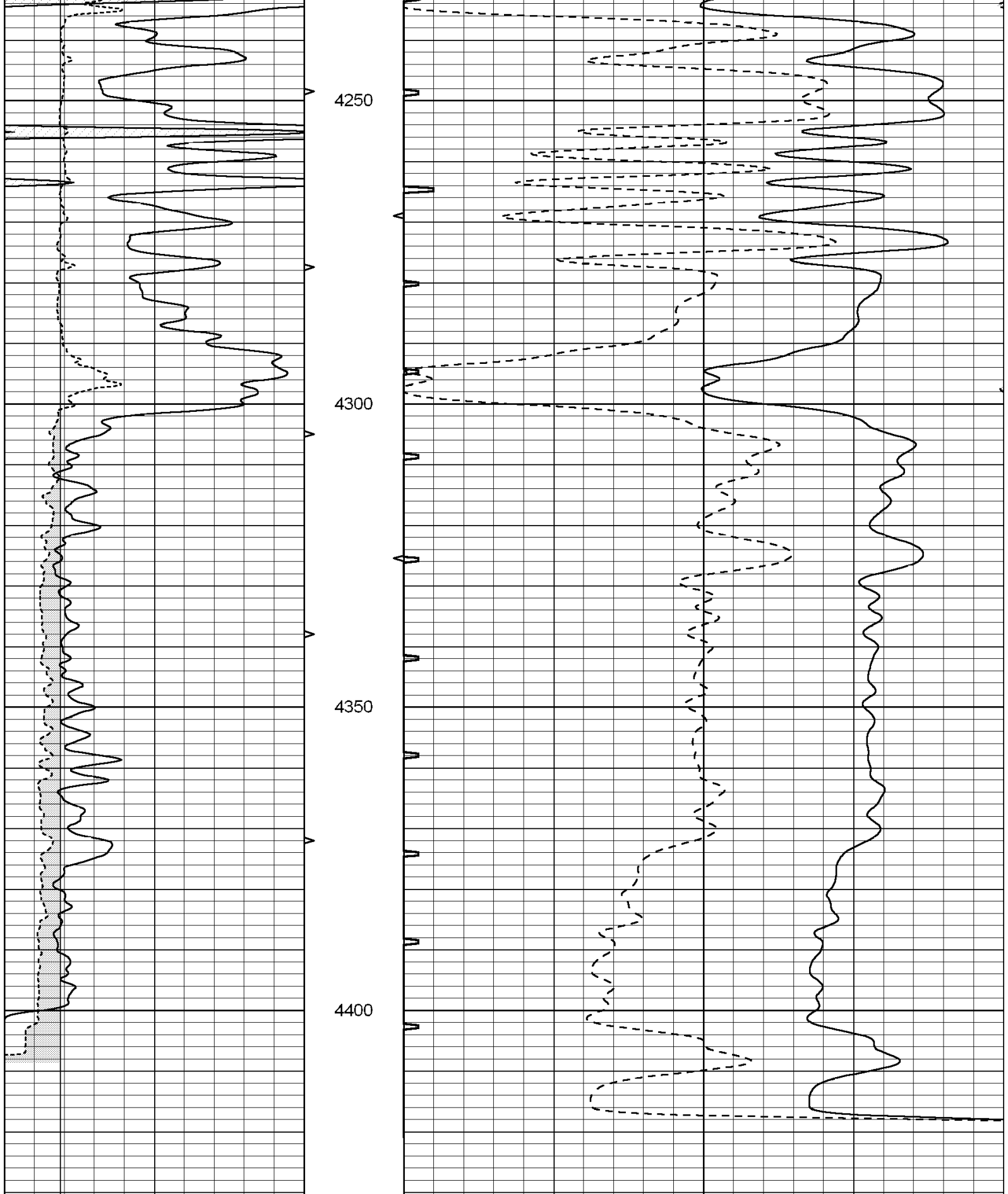


SUPERIOR
Hays,
Kansas

REPEAT SECTION

Database File: 003538ddn.db
 Dataset Pathname: pass5.3
 Presentation Format: slt
 Dataset Creation: Wed Jul 08 22:04:19 2009 by Calc Open-Cased 060407
 Charted by: Depth in Feet scaled 1:240





0	GAMMA RAY (GAPI)	150	ABHV	140	DELTA TIME (usec/ft)	40	
6	CALIPER (in)	16	10 (ft3)	0	30	SONIC POROSITY (pu)	-10
			TBHV	0	ITT (msec)	20	
			0 (ft3)	10			