

LOG-TECH



Microresistivity Log

DIGITAL LOG

(785) 625-3858

API No.

15-193-20,765-00-00

Company **Murfin Drilling Company, Inc.**

Well **TFE Unit No. 1-21**

Field **Wildcat**

County **Thomas**

State

Kansas

Location

2550' FSL & 2270' FWL

Other Services
CNL/CDL
DIL/BHCS

Sec: **21**

Twp: **10S**

Rge: **34W**

Elevation

Elevation **3201**

K.B. **3206**

D.F. **3201**

G.L. **3201**

Permanent Datum **Ground Level**

Log Measured From **Kelly Bushing**

Drilling Measured From **Frotkelly Bushing**

5 Ft. Above Perm. Datum

Elevation

K.B. **3206**

D.F. **3201**

G.L. **3201**

Top Log Interval **3800**

Casing Driller **8.625 @ 249**

Casing Logger **245**

Bit Size **7.875**

Type Fluid in Hole **Chemical**

Salinity, ppm CL **9.700**

Density / Viscosity **9.0 55**

pH / Fluid Loss **11.5 6.8**

Source of Sample **Flowline**

Rm @ Meas. Temp **.58 @ 75**

Rmf @ Meas. Temp **.43 @ 75**

Rmc @ Meas. Temp **.78 @ 75**

Source of Rmf / Rmc **Charts**

Rm @ BHT **.34 @ 126**

Operating Rig Time **5 Hours**

Max Rec. Temp. F **126**

Equipment Number **10**

Location **Hays**

Recorded By **Jason Wellbrock**

Witnessed By **Paul Gunzelman**

Date **06/19/2009**

Run Number **Two**

Depth Driller **4815**

Depth Logger **4813**

Bottom Logged Interval **4812**

Top Log Interval **3800**

Casing Driller **8.625 @ 249**

Casing Logger **245**

Bit Size **7.875**

Type Fluid in Hole **Chemical**

Salinity, ppm CL **9.700**

Density / Viscosity **9.0 55**

pH / Fluid Loss **11.5 6.8**

Source of Sample **Flowline**

<<< Fold Here >>>

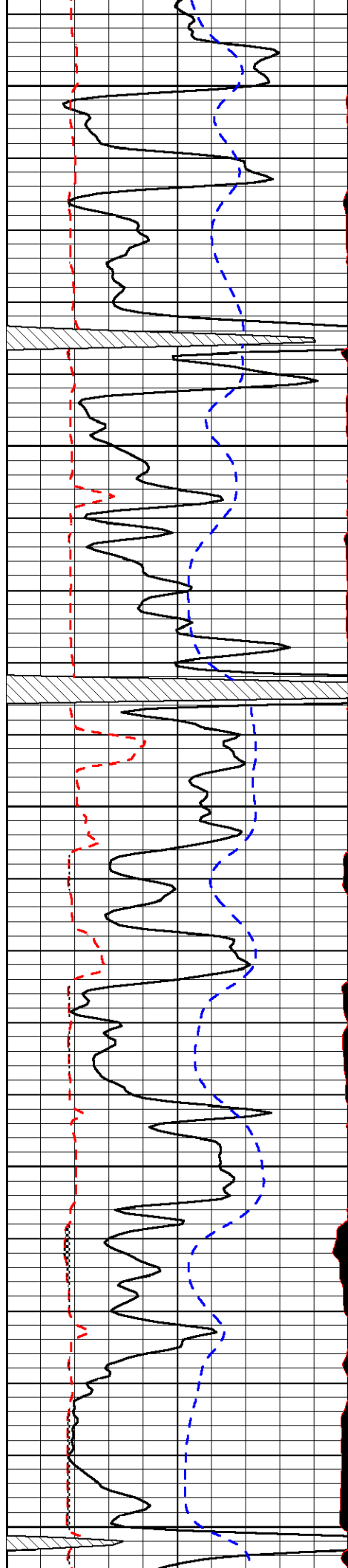
All interpretations are opinions based on inferences from electrical or other measurements and we cannot and do not guarantee the accuracy or correctness of any interpretation, and we shall not, except in the case of gross or willful negligence on our part, be liable or responsible for any loss, costs, damages, or expenses incurred or sustained by anyone resulting from any interpretation made by any of our officers, agents or employees. These interpretations are also subject to our general terms and conditions set out in our current Price Schedule.

Comments

Thank you for using Log-Tech, Inc.
(785) 625-3858

Oakley W to Highway 25, 6 N to D rd, 3 W, 1/2 S, E Into

Database File: murfhd.db
Dataset Pathname: dil/murf2in
Presentation Format: micro
Dataset Creation: Fri Jun 19 07:29:30 2009
Charted by: Depth in Feet scaled 1:240



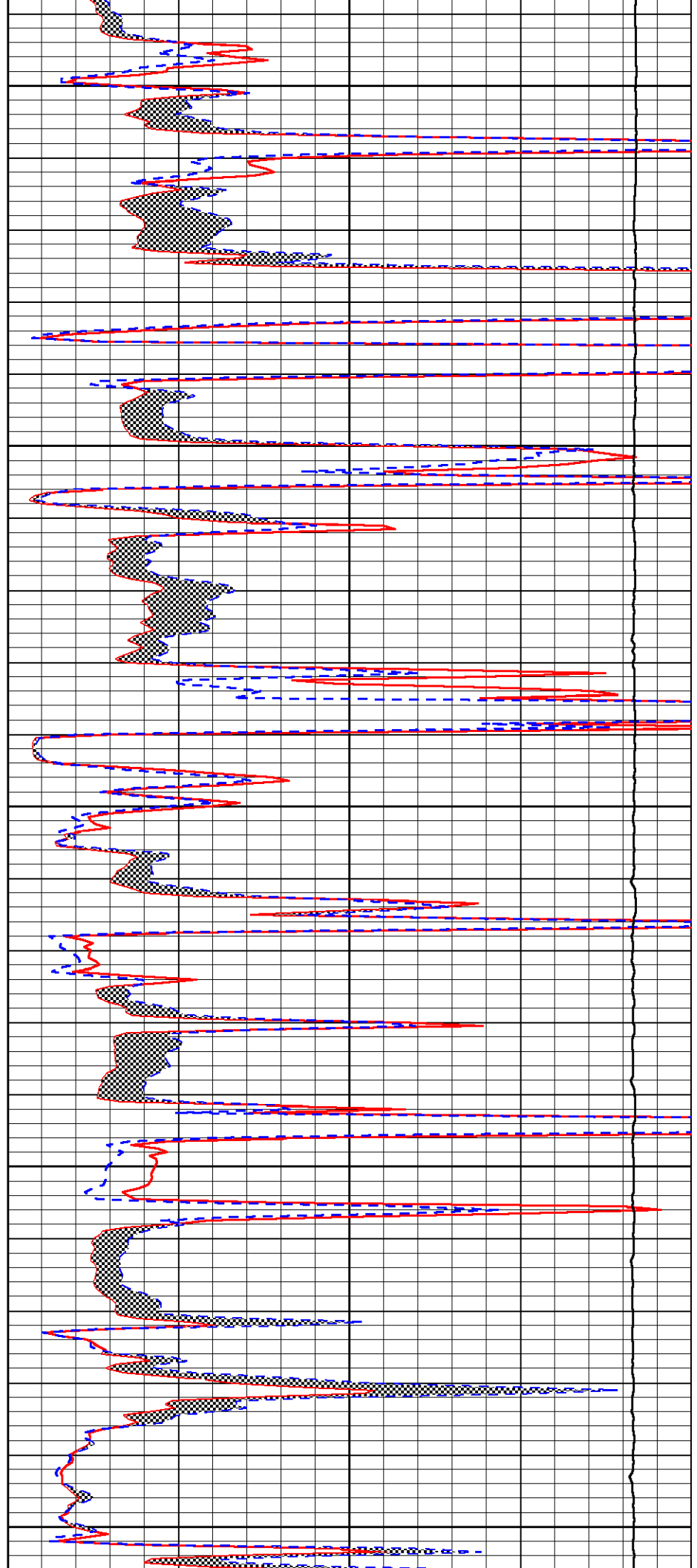
4000

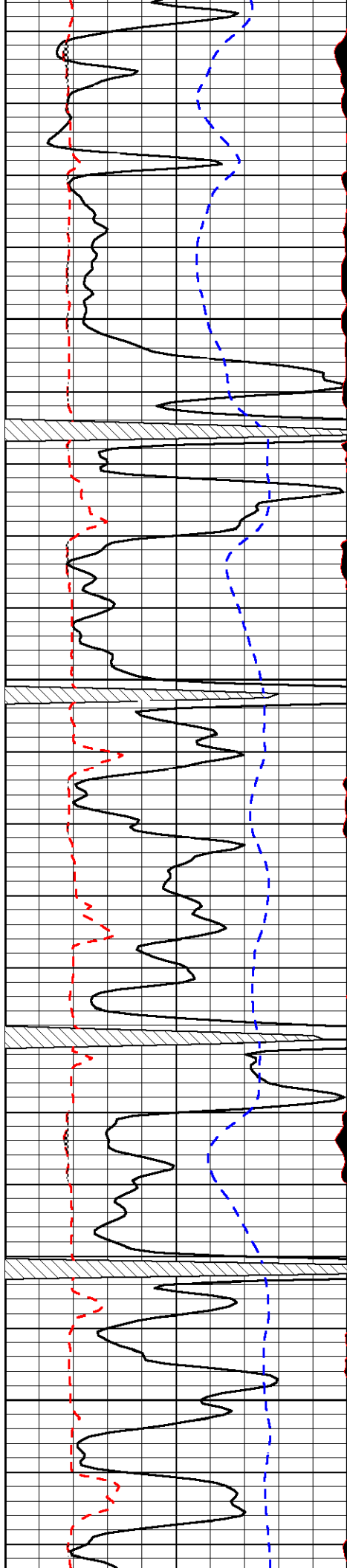
4050

4100

4150

4200



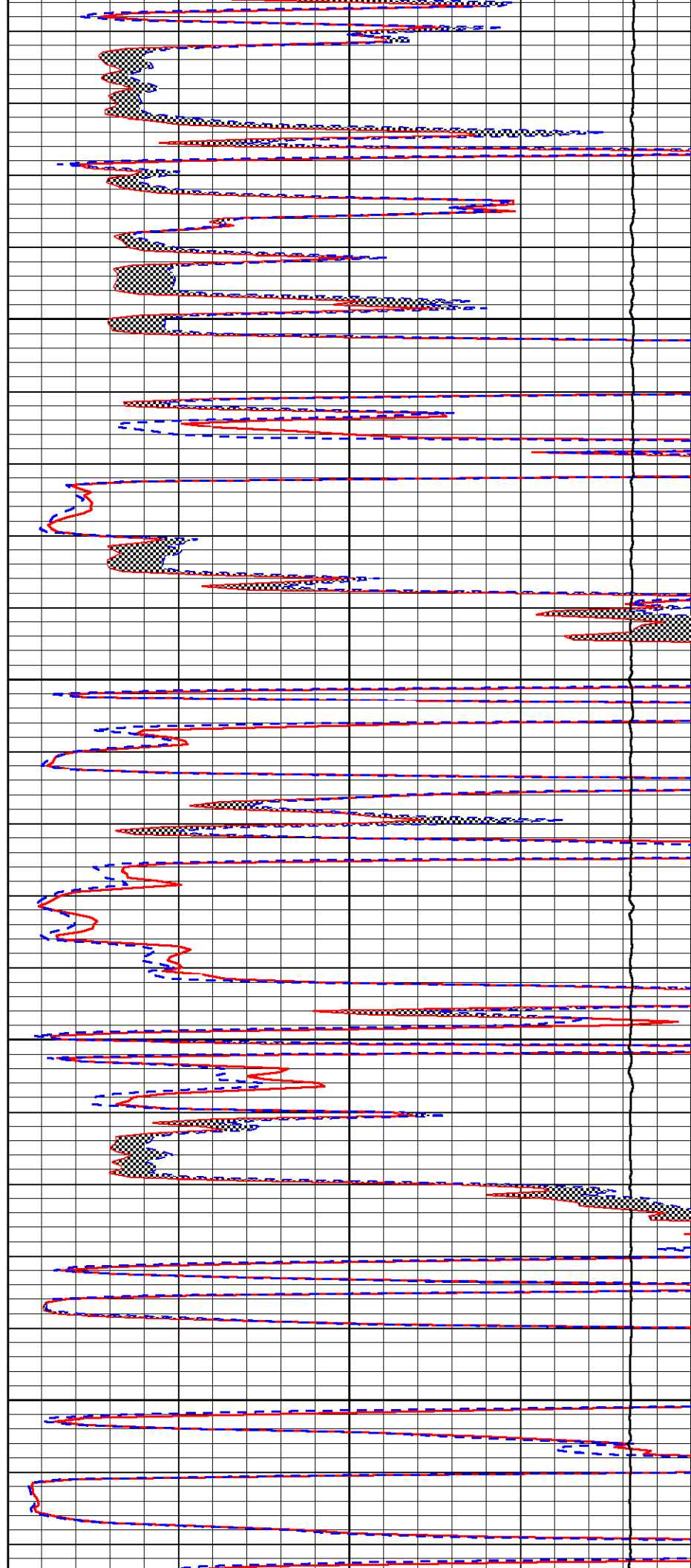


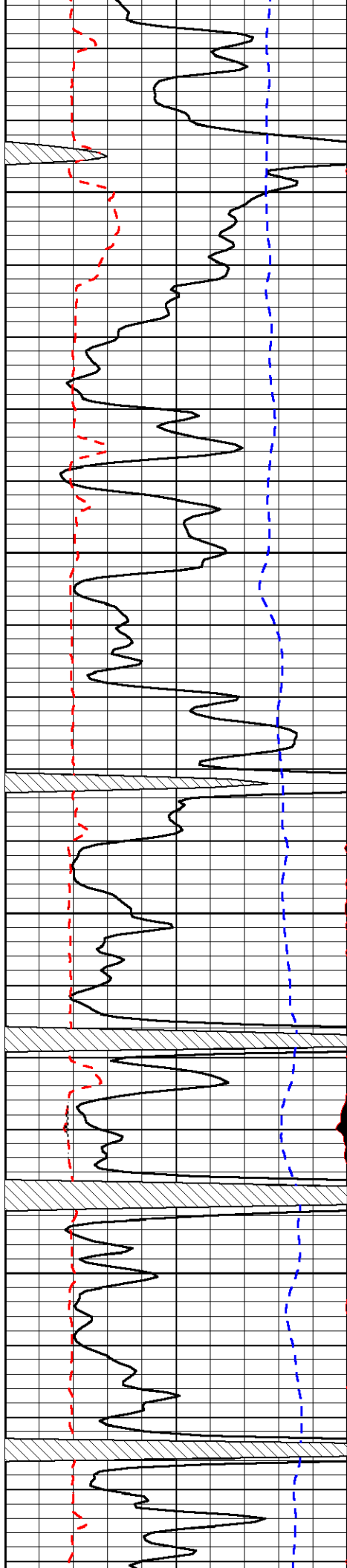
4250

4300

4350

4400



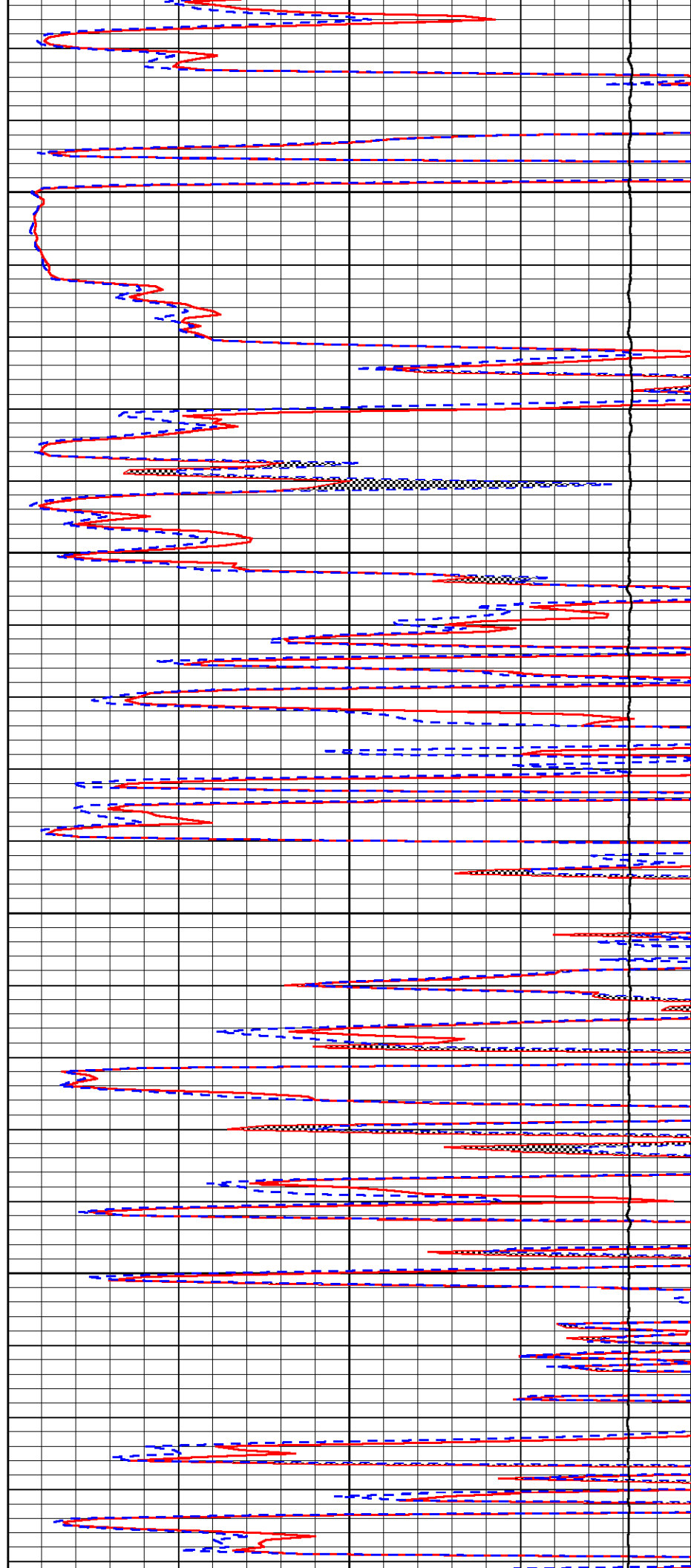


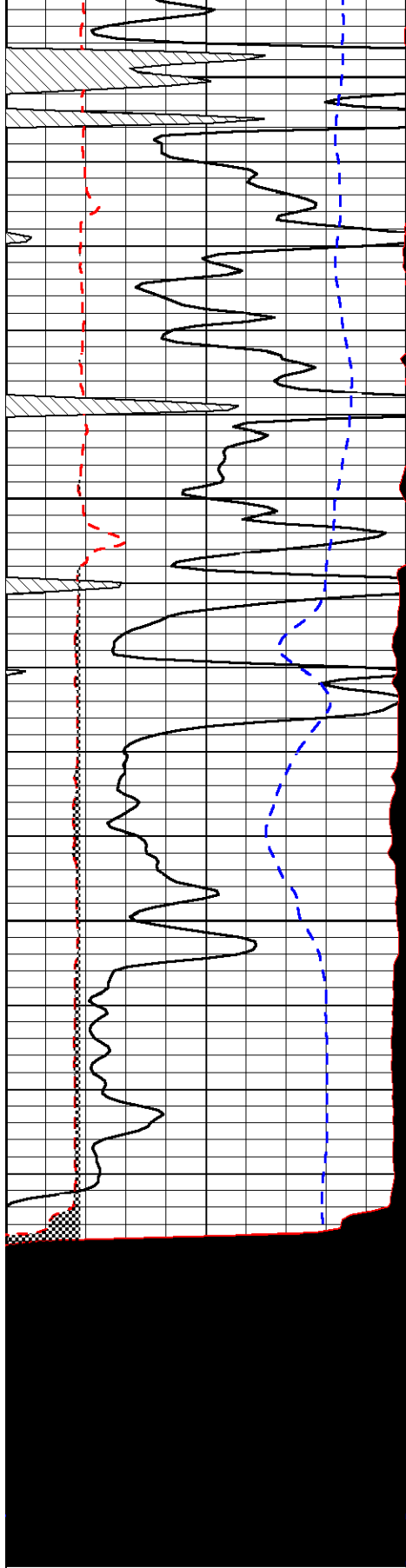
4450

4500

4550

4600





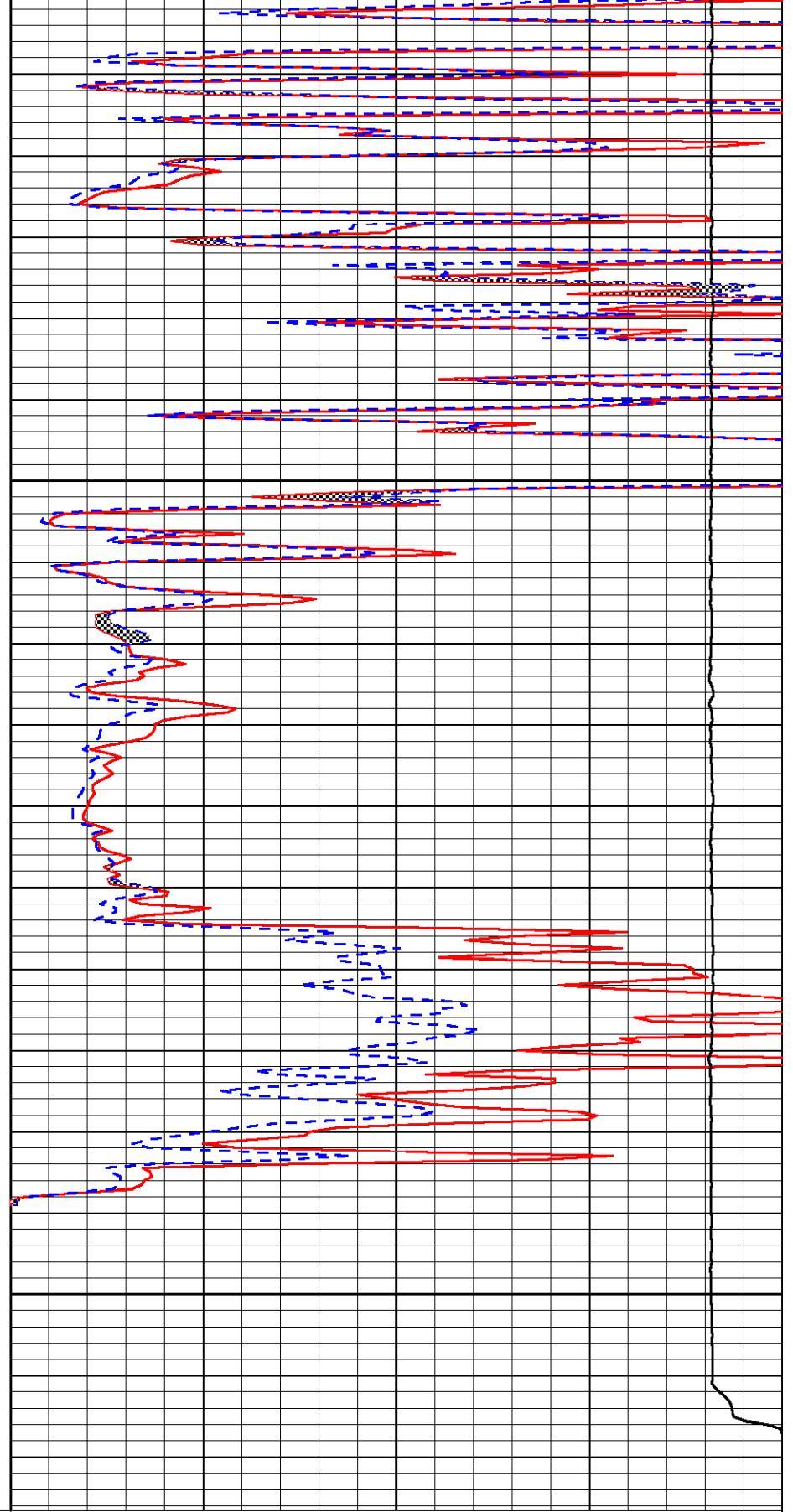
4650

4700

4750

4800

0	Gamma Ray	150
6	Micro Log Caliper (GAPI)	16
2.875	mcal (GAPI)	7.875
-200	SP	0



0	Micro Inverse 1 X 1	40
0	Micro Normal 2''	40
15000	Line Weight	0