



**Borehole Compensated
Sonic Log**

DIGITAL LOG (785) 625-3858

API No. 15-193-20,765-00-00	Company Murfin Drilling Company, Inc.	Well TFE Unit No. 1-21	Field Wildcat	County Thomas	State Kansas
Location 2550' FSL & 2270' FWL	Sec: 21	Twp: 10S	Rge: 34W	Other Services CNL/CDL DIL/MEL	
Permanent Datum Log Measured From Drilling Measured From	Ground Level Kelly Bushing Kelly Bushing	Elevation 3201 5 Ft. Above Perm. Datum	Elevation K.B. 3206 D.F. G.L. 3201		

Date	06/19/2009
Run Number	Two
Type Log	BHC Sonic
Depth Driller	4815
Depth Logger	4813
Bottom Logged Interval	4801
Top Logged Interval	230
Type Fluid In Hole	Chemical
Salinity, PPM CL	9,700
Density	9.0
Level	Full
Max. Rec. Temp. F	126
Operating Rig Time	5 Hours
Equipment -- Location	10 Hays
Recorded By	Jason Wellbrock
Witnessed By	Paul Gunzelman

Borehole Record				Casing Record			
Run No	Bit	From	To	Size	Wgt.	From	To
One	12.25	0	249	8.625	24#	0	249
Two	7.875	249	TD				

<<< Fold Here >>>

All interpretations are opinions based on inferences from electrical or other measurements and we cannot and do not guarantee the accuracy or correctness of any interpretation, and we shall not, except in the case of gross or willful negligence on our part, be liable or responsible for any loss, costs, damages, or expenses incurred or sustained by anyone resulting from any interpretation made by any of our officers, agents or employees. These interpretations are also subject to our general terms and conditions set out in our current Price Schedule.

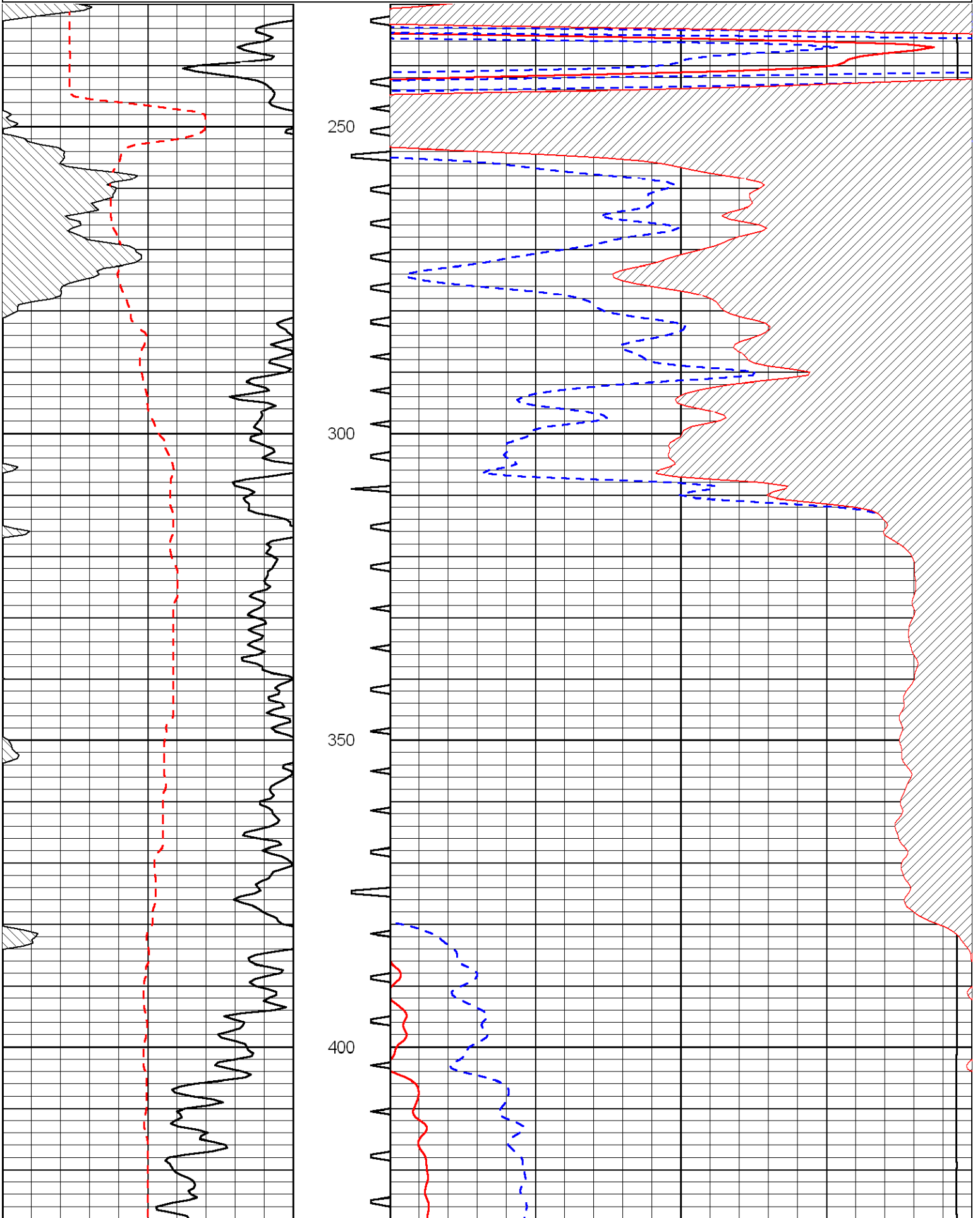
Comments

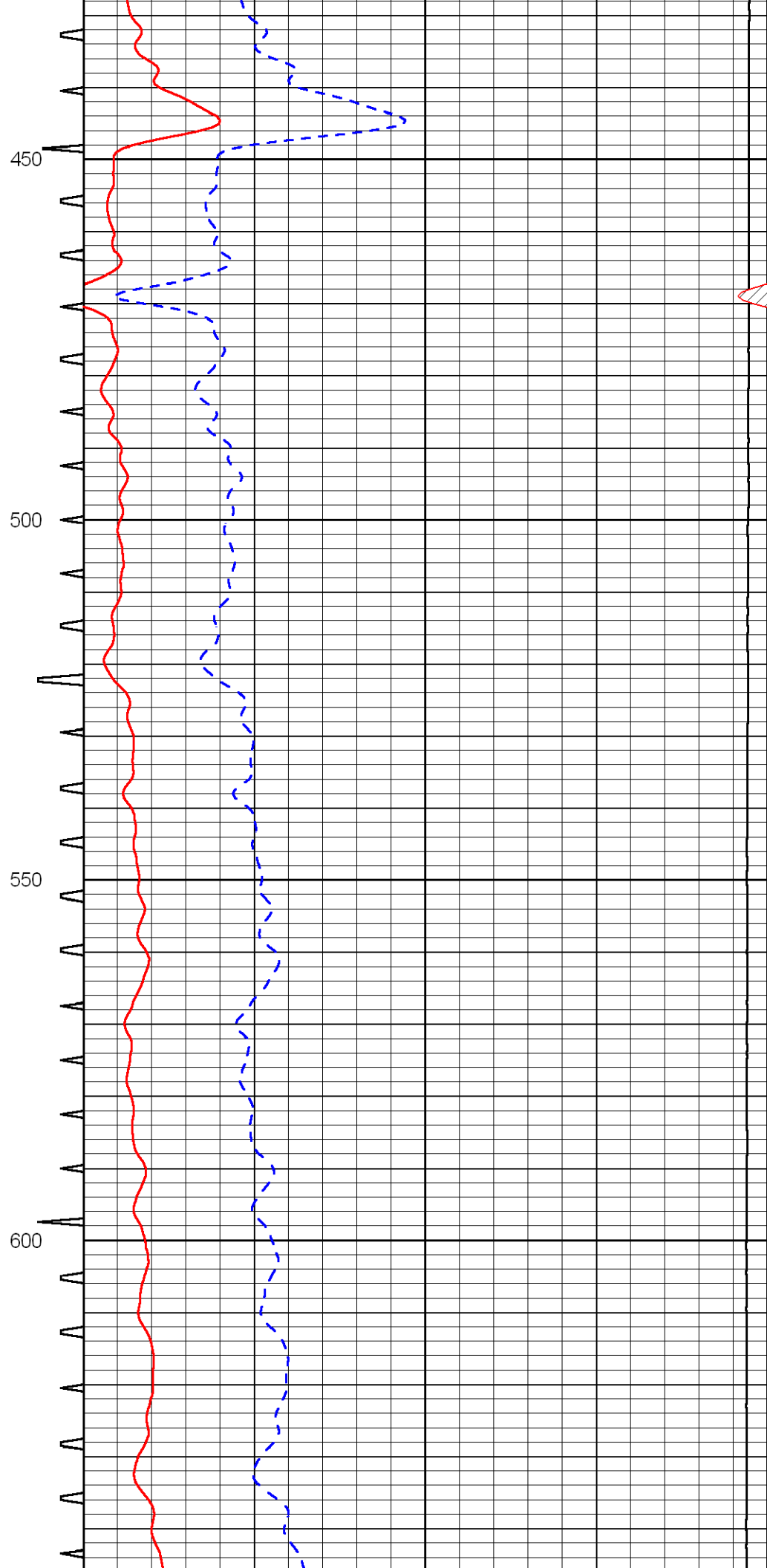
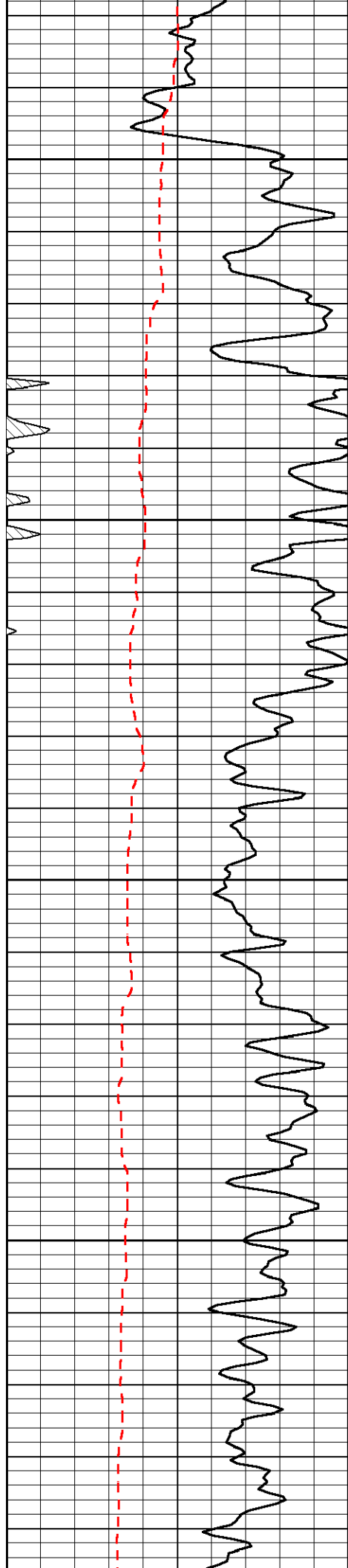
Thank you for using Log-Tech, Inc.
(785) 625-3858

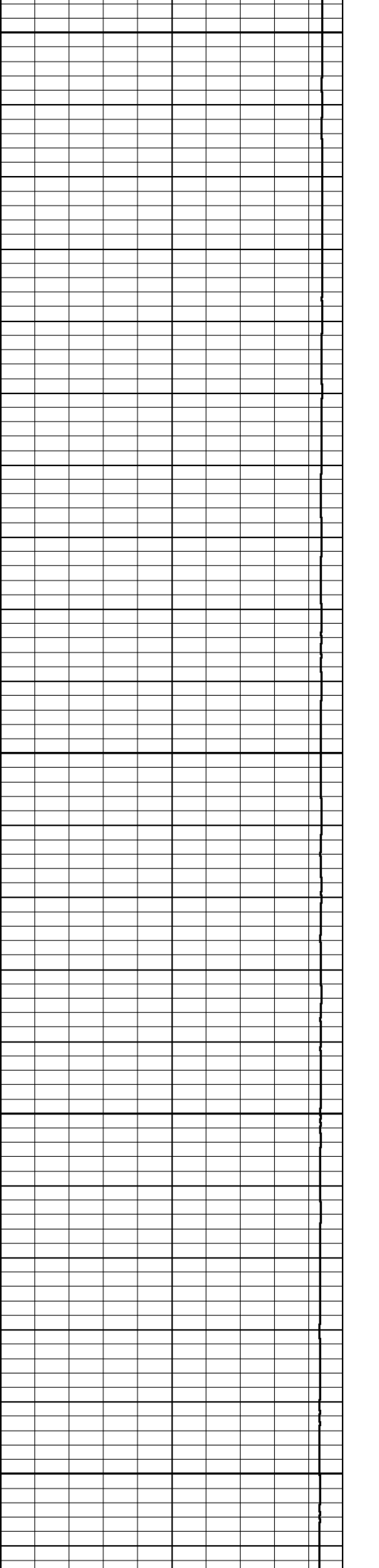
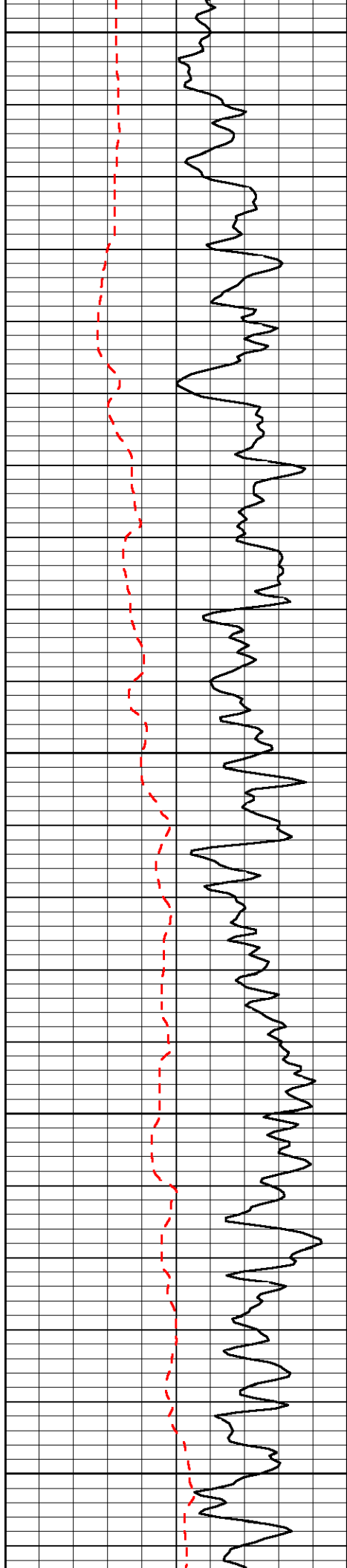
Oakley W to Highway 25, 6 N to D rd, 3 W, 1/2 S, E Into

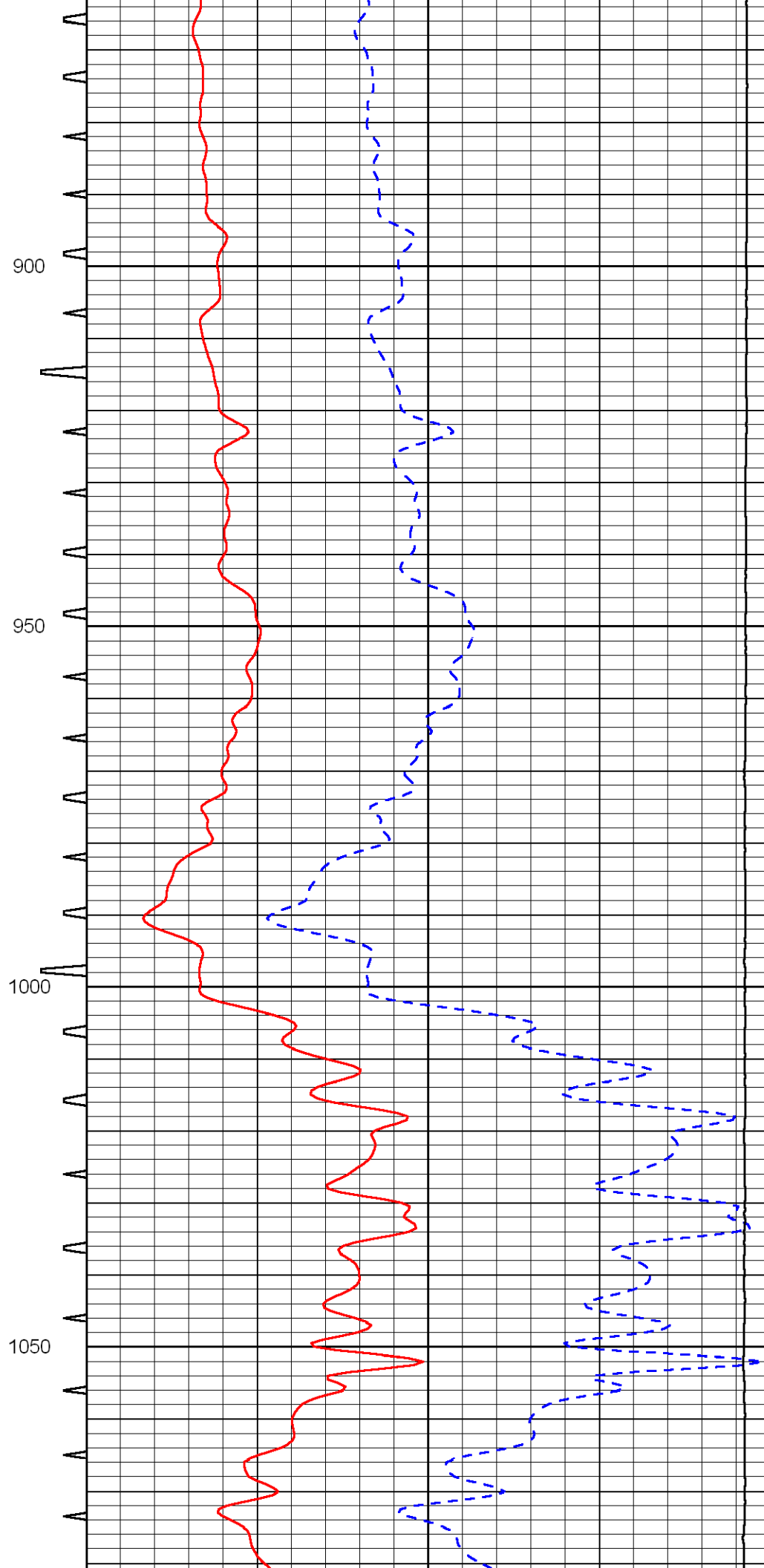
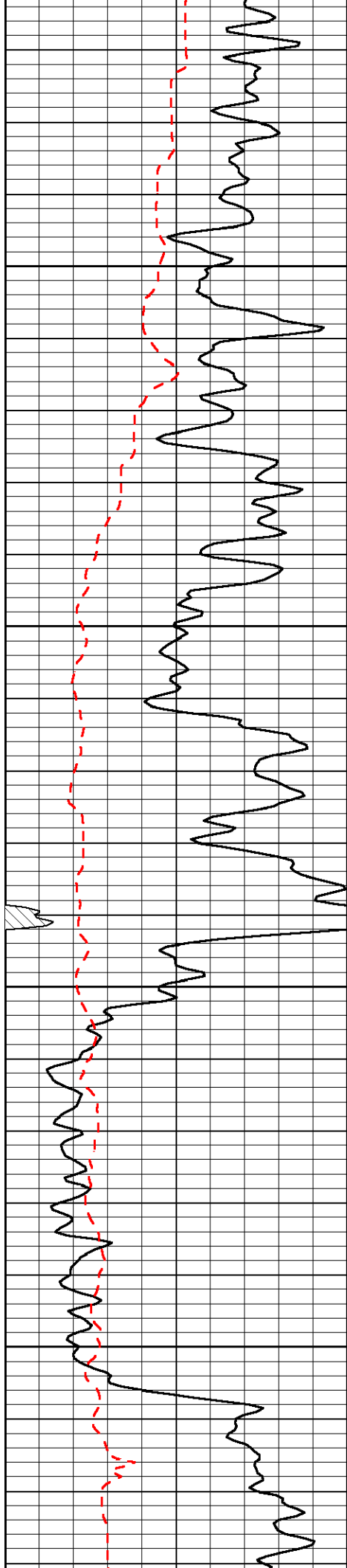
Database File: murfhd.db
 Dataset Pathname: dil/murf2in
 Presentation Format: sonic
 Dataset Creation: Fri Jun 19 07:29:30 2009
 Charted by: Depth in Feet scaled 1:240

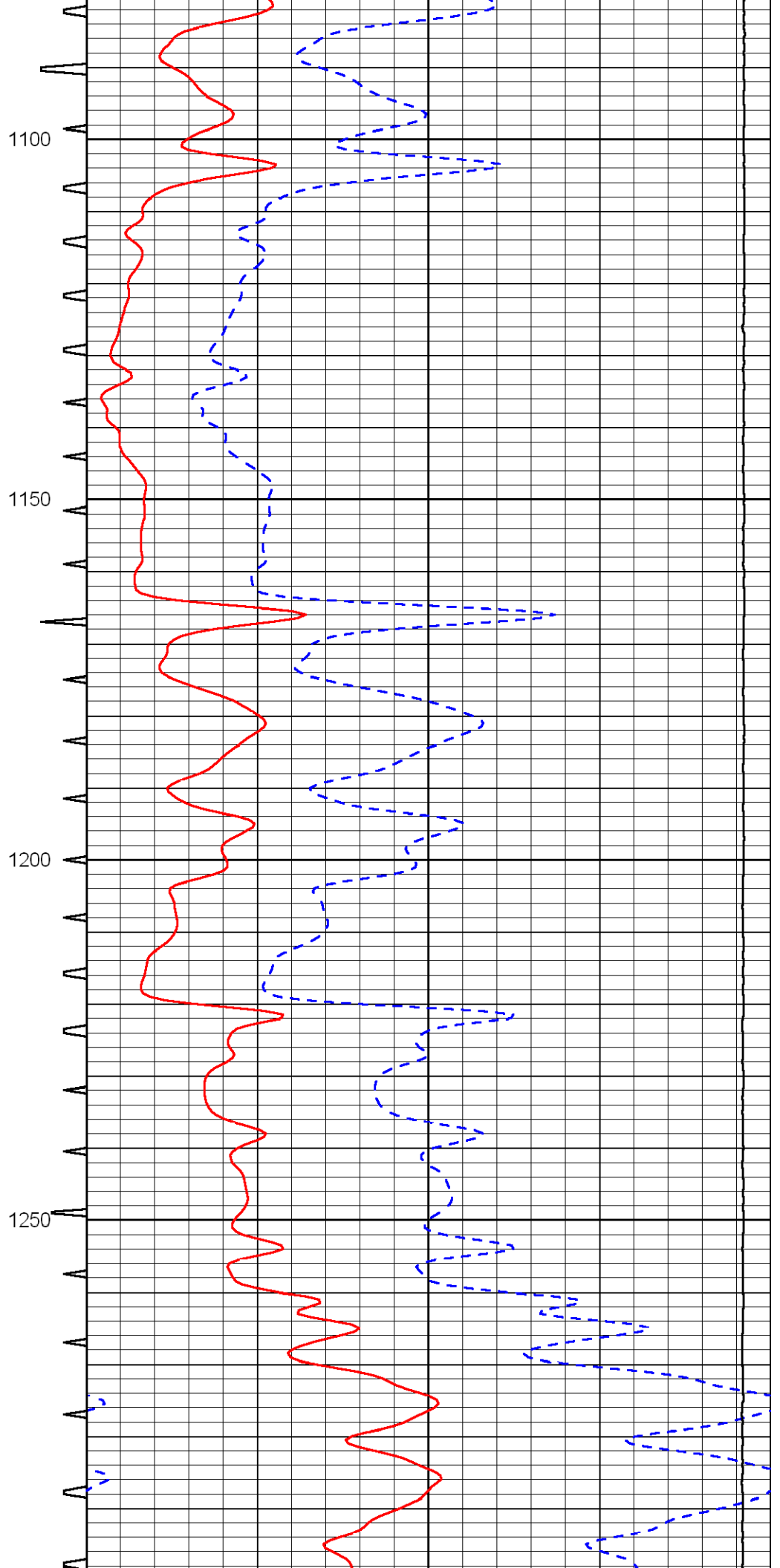
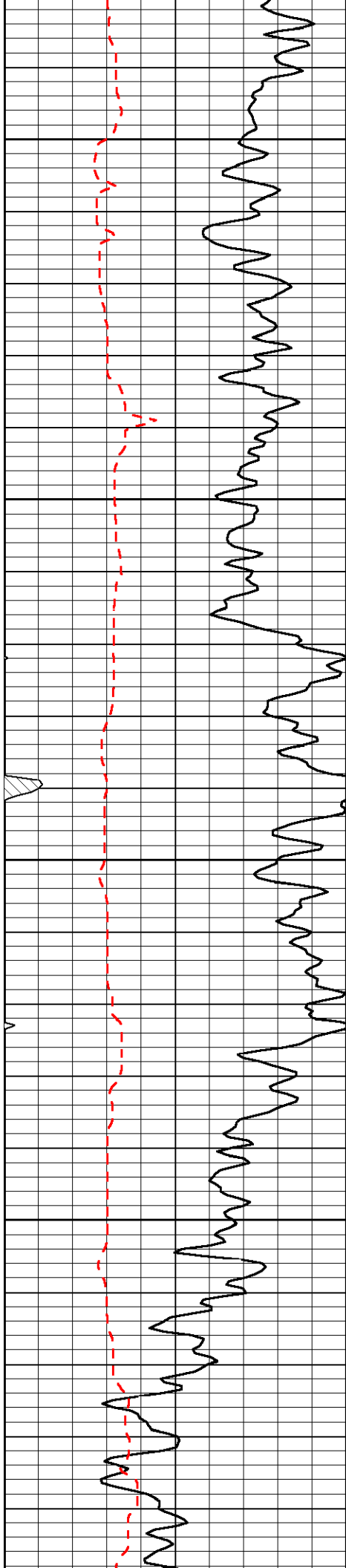
0	Gamma Ray	150	Sonic Int	140	DT	40
150	Gamma Ray	300	5	0	Sonic Porosity (Limestone)	-10
6	Caliper (GAPI)	16		15000	LTEN (lb)	0

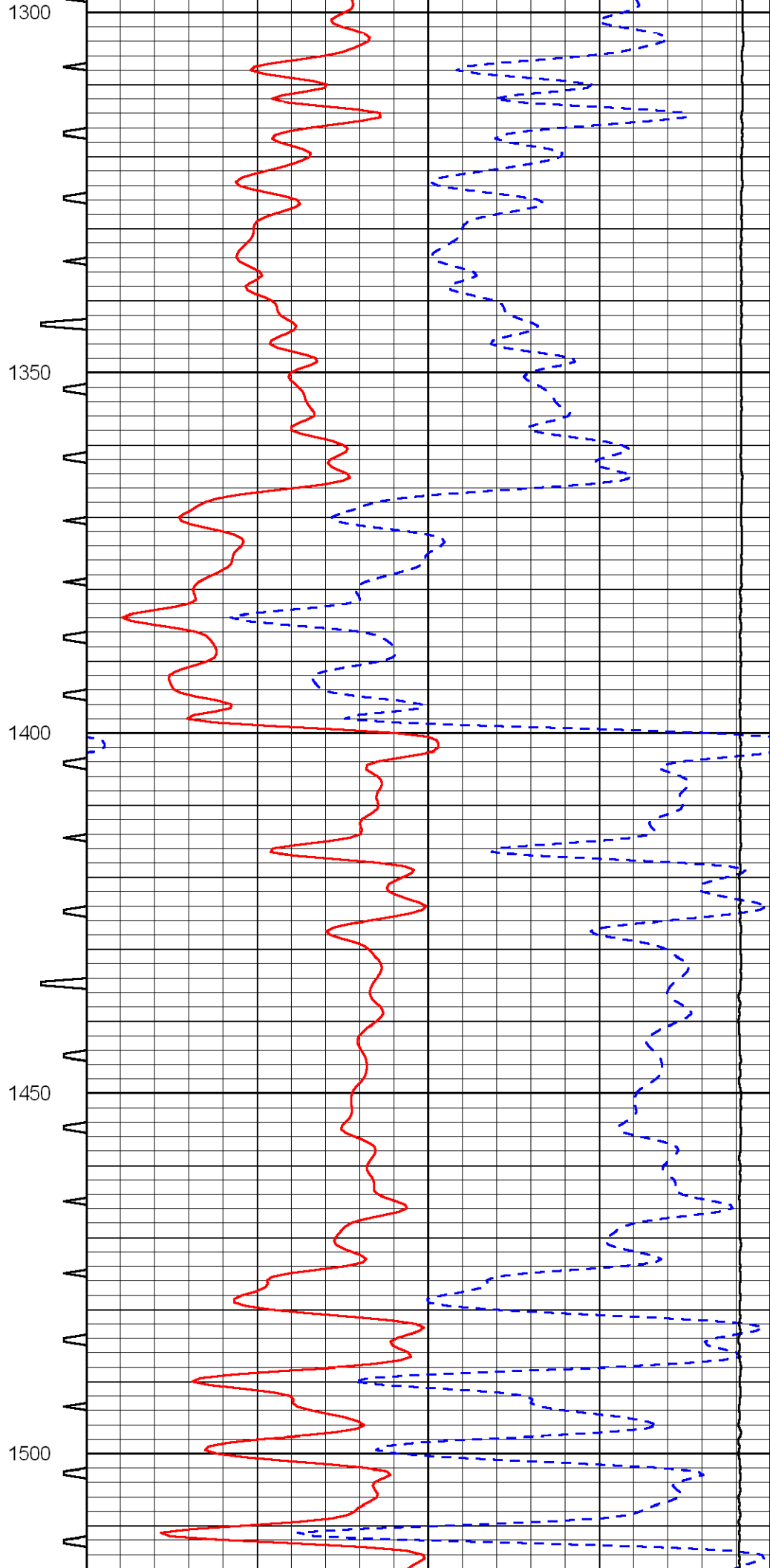
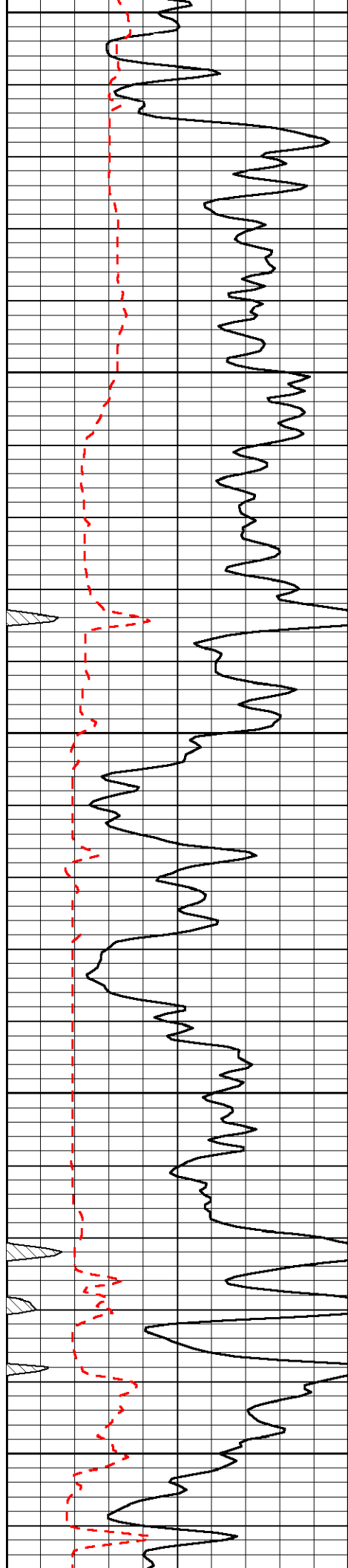


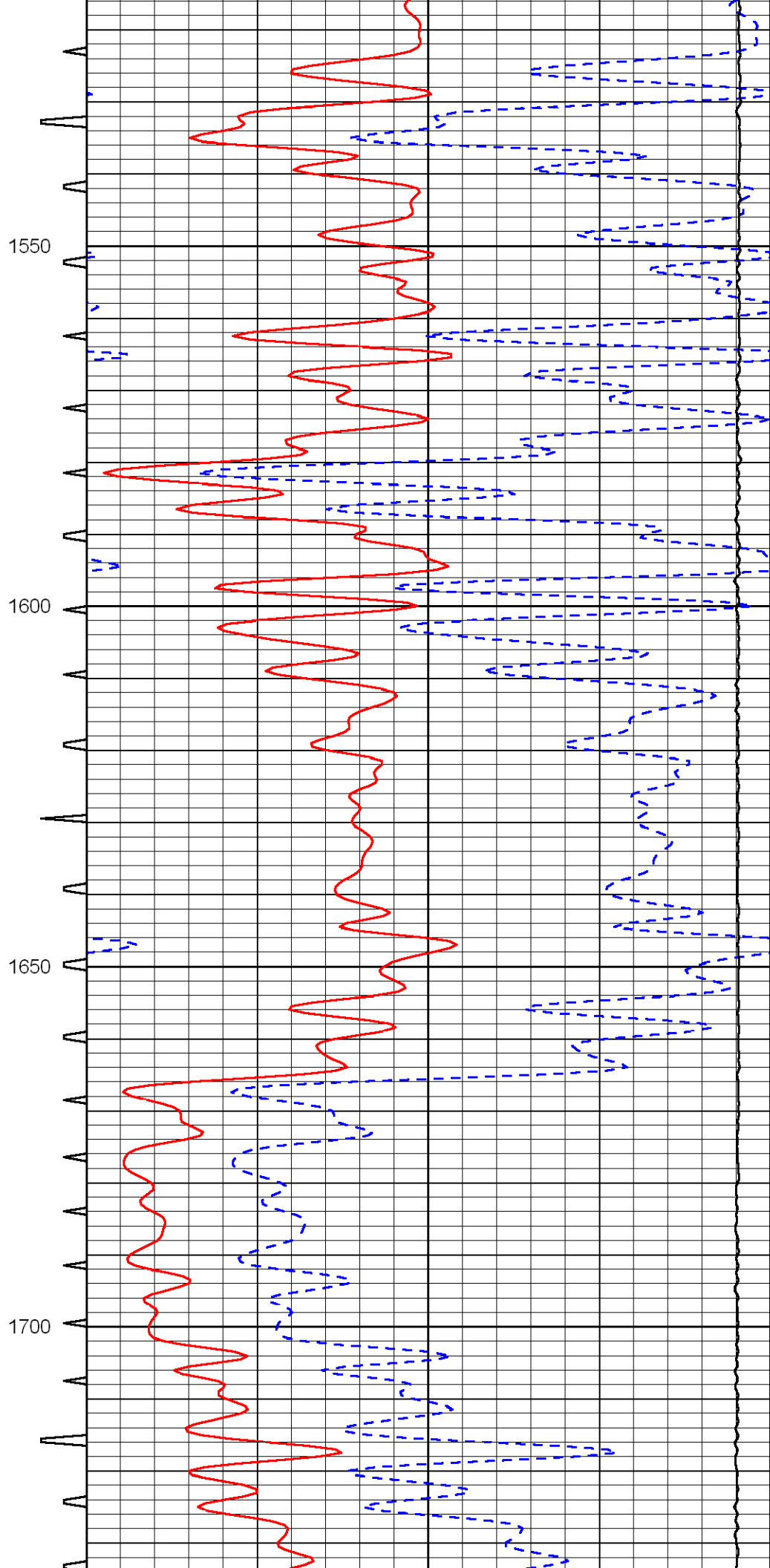
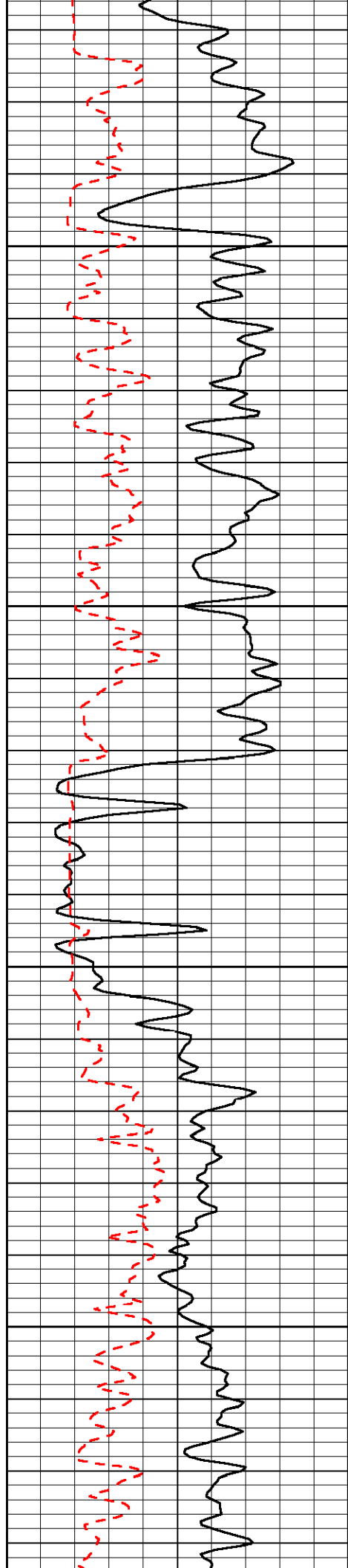


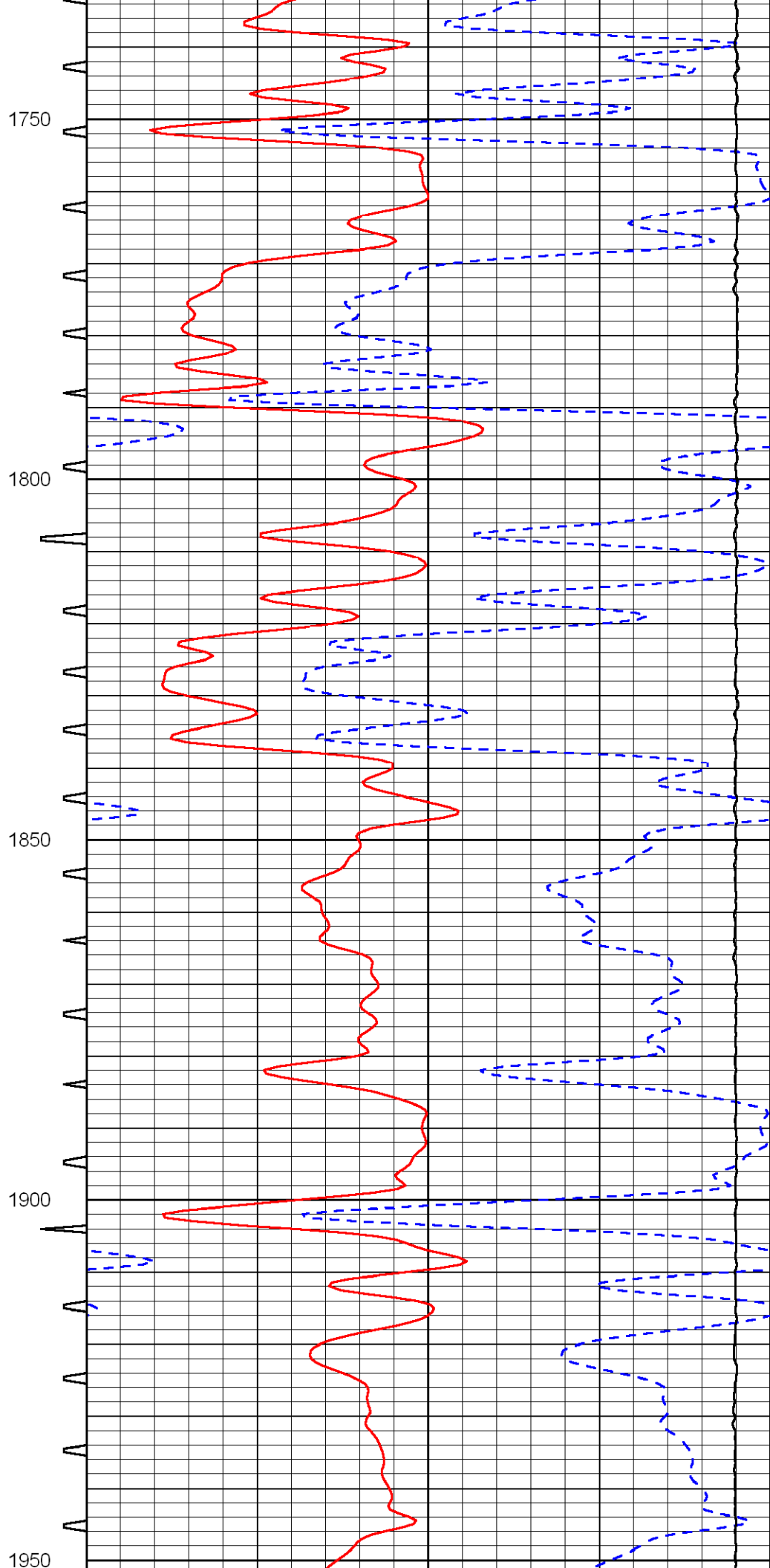
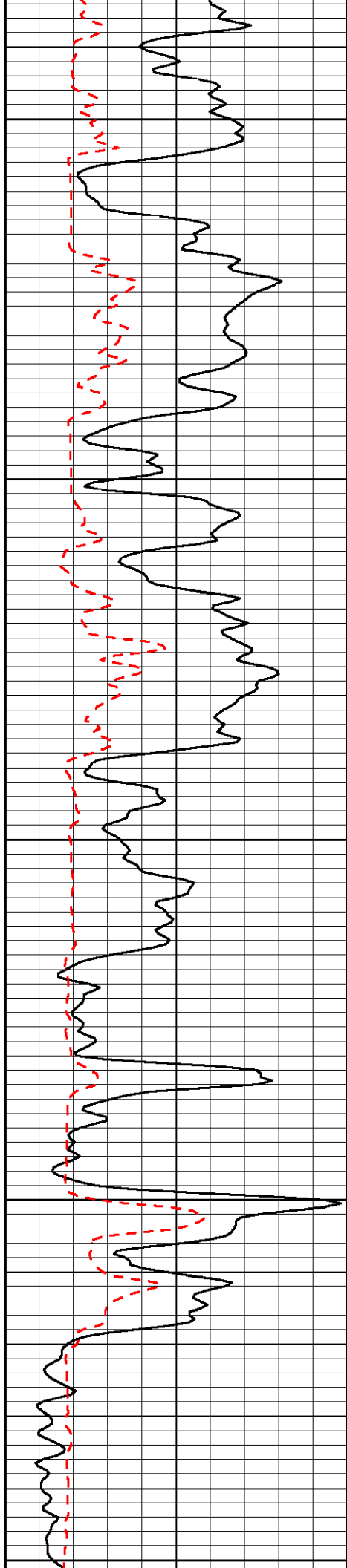


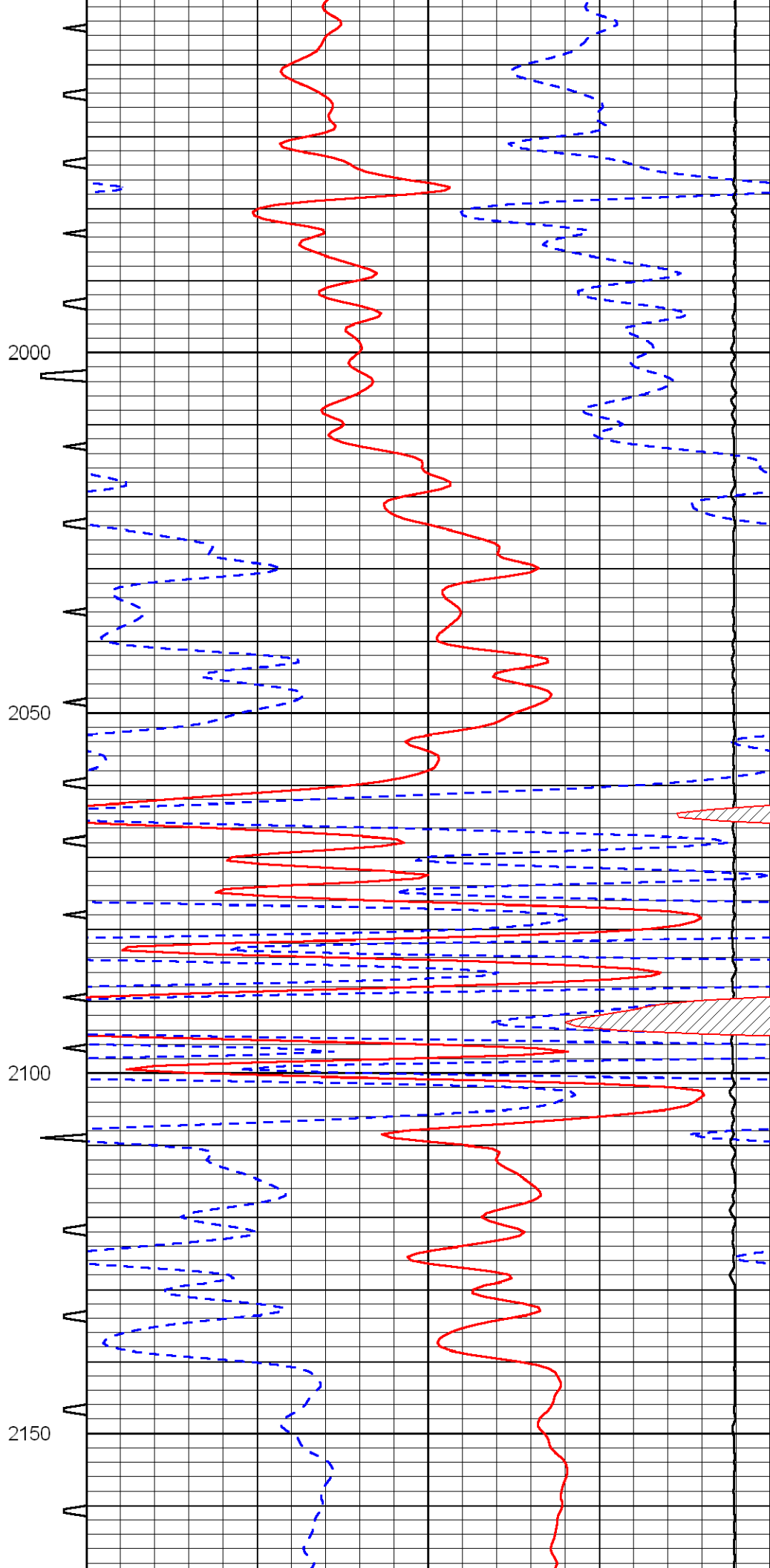
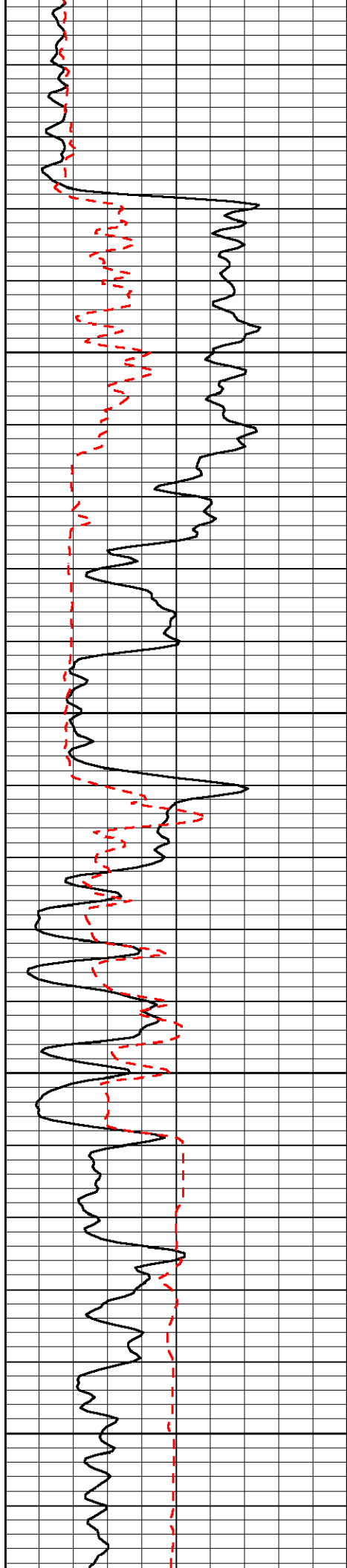


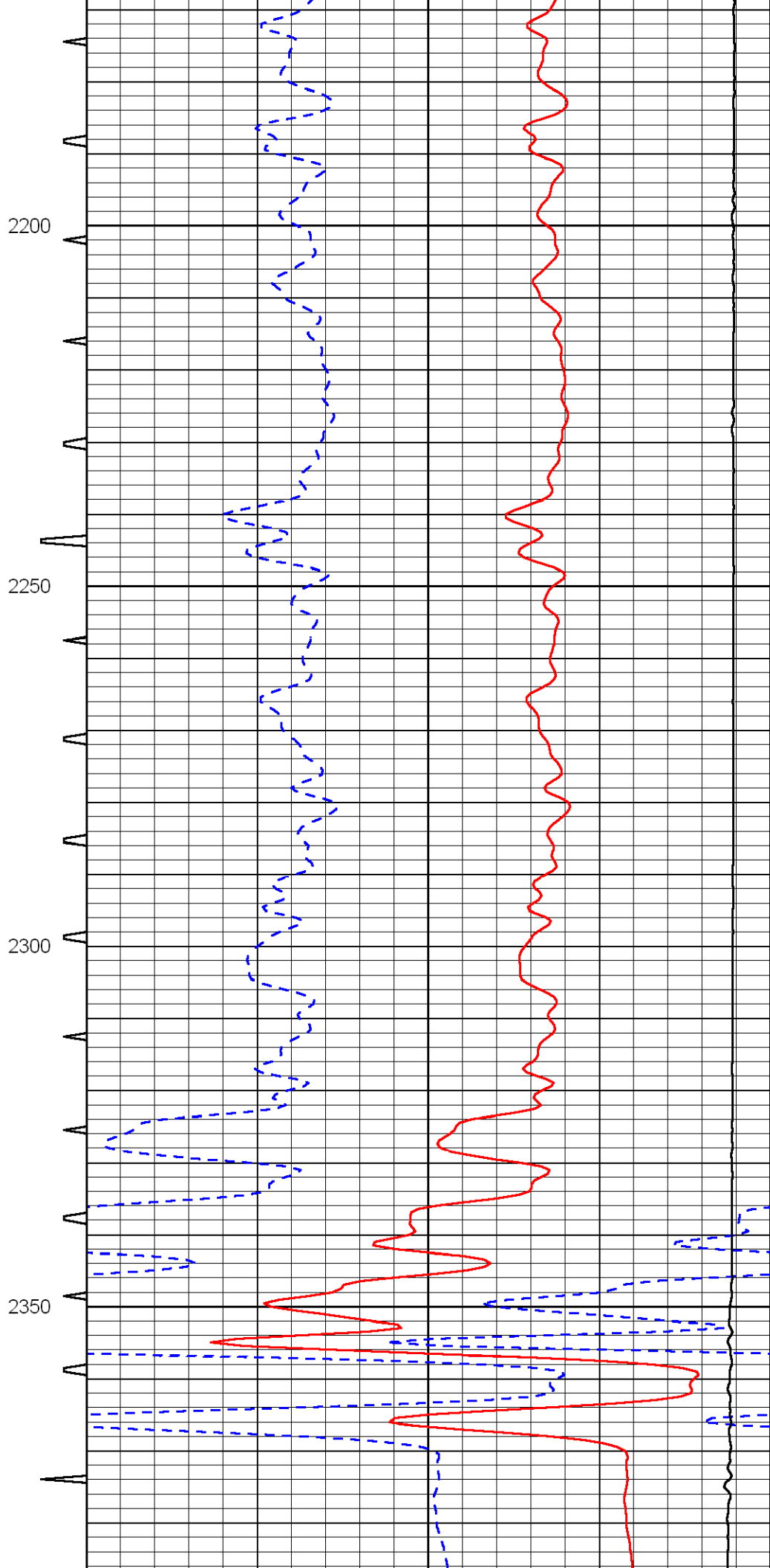
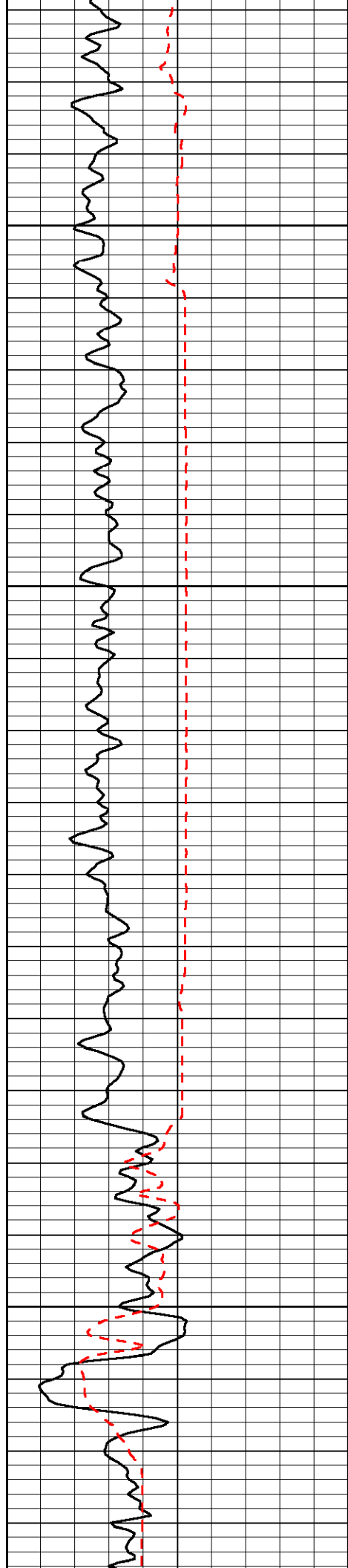


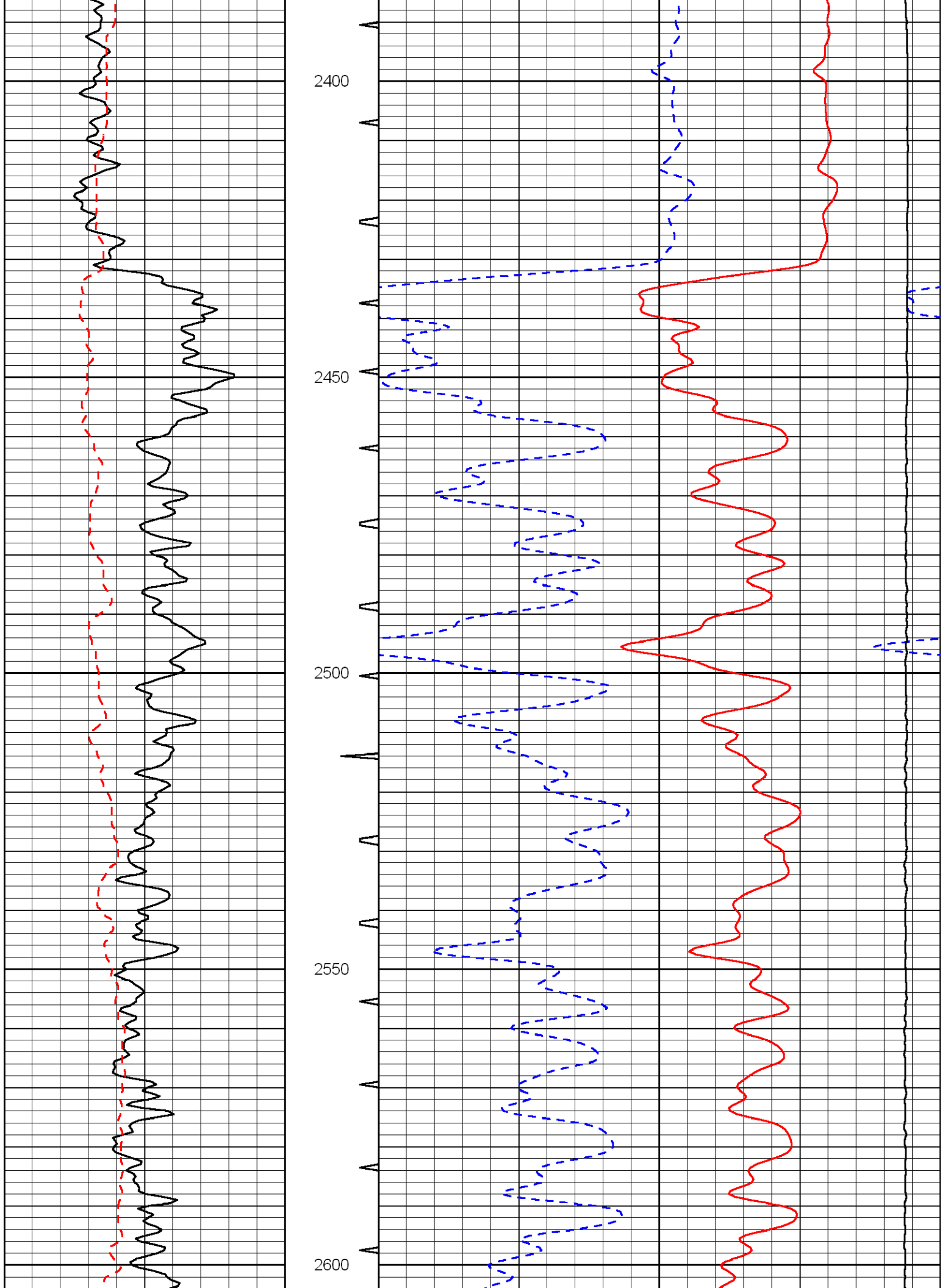


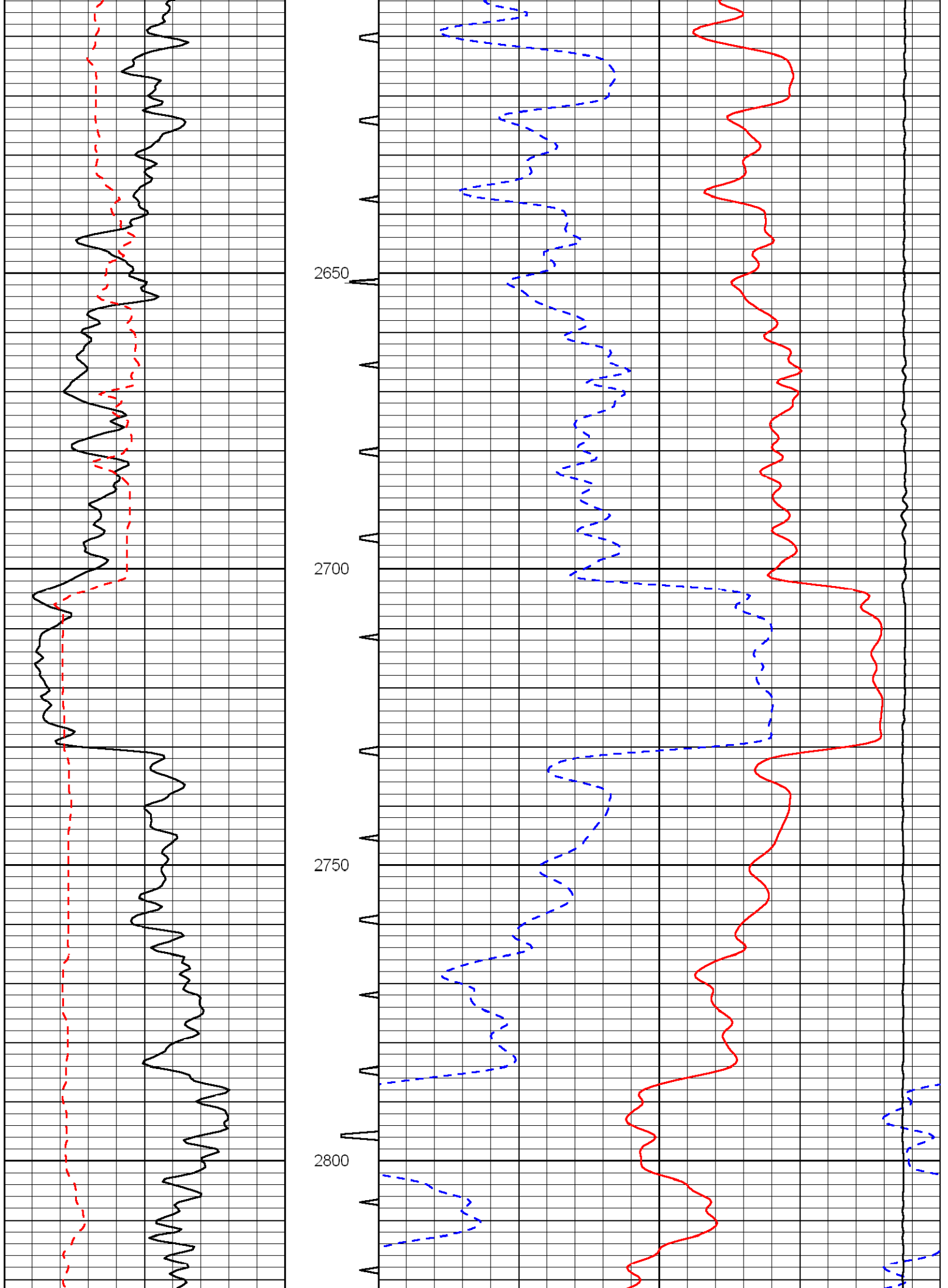


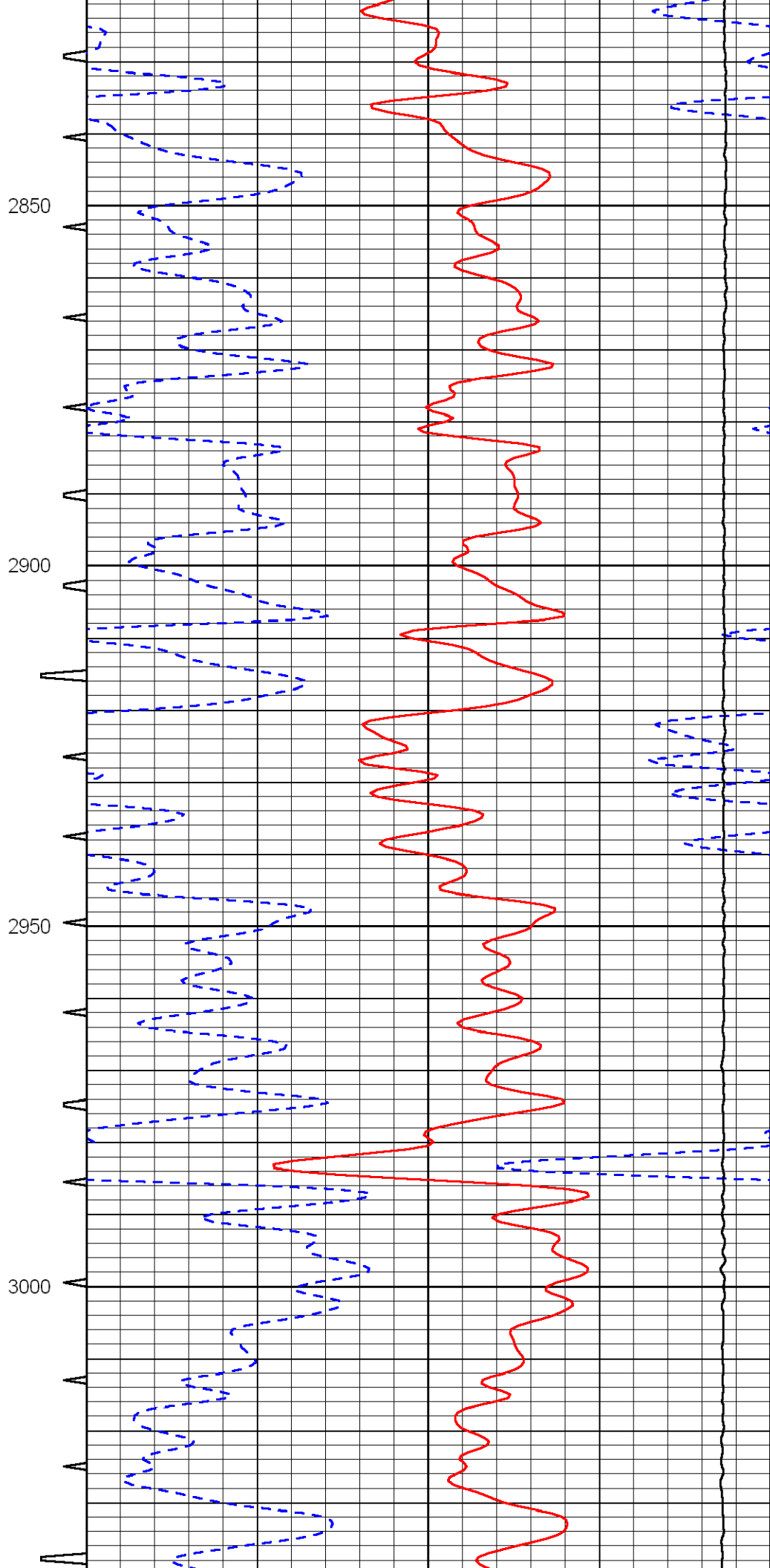
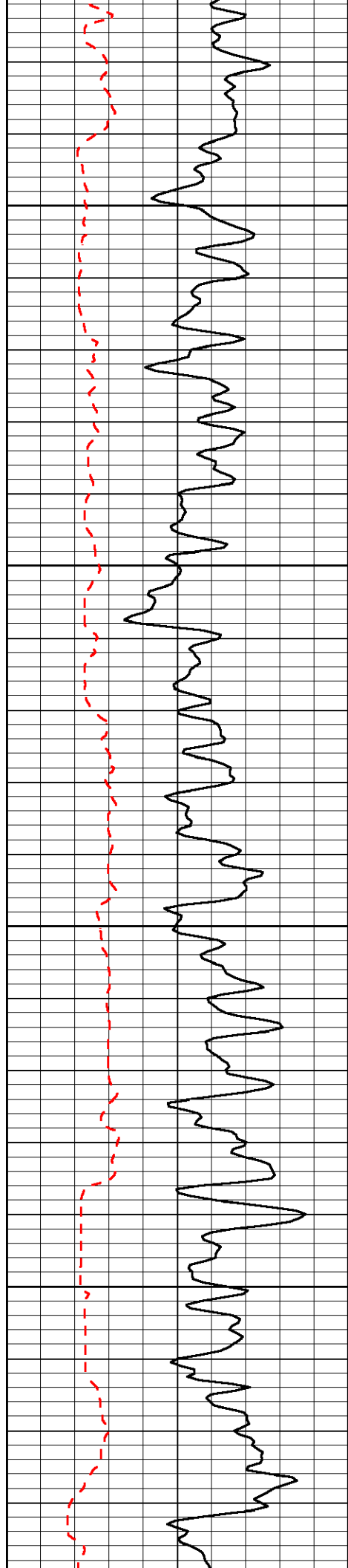


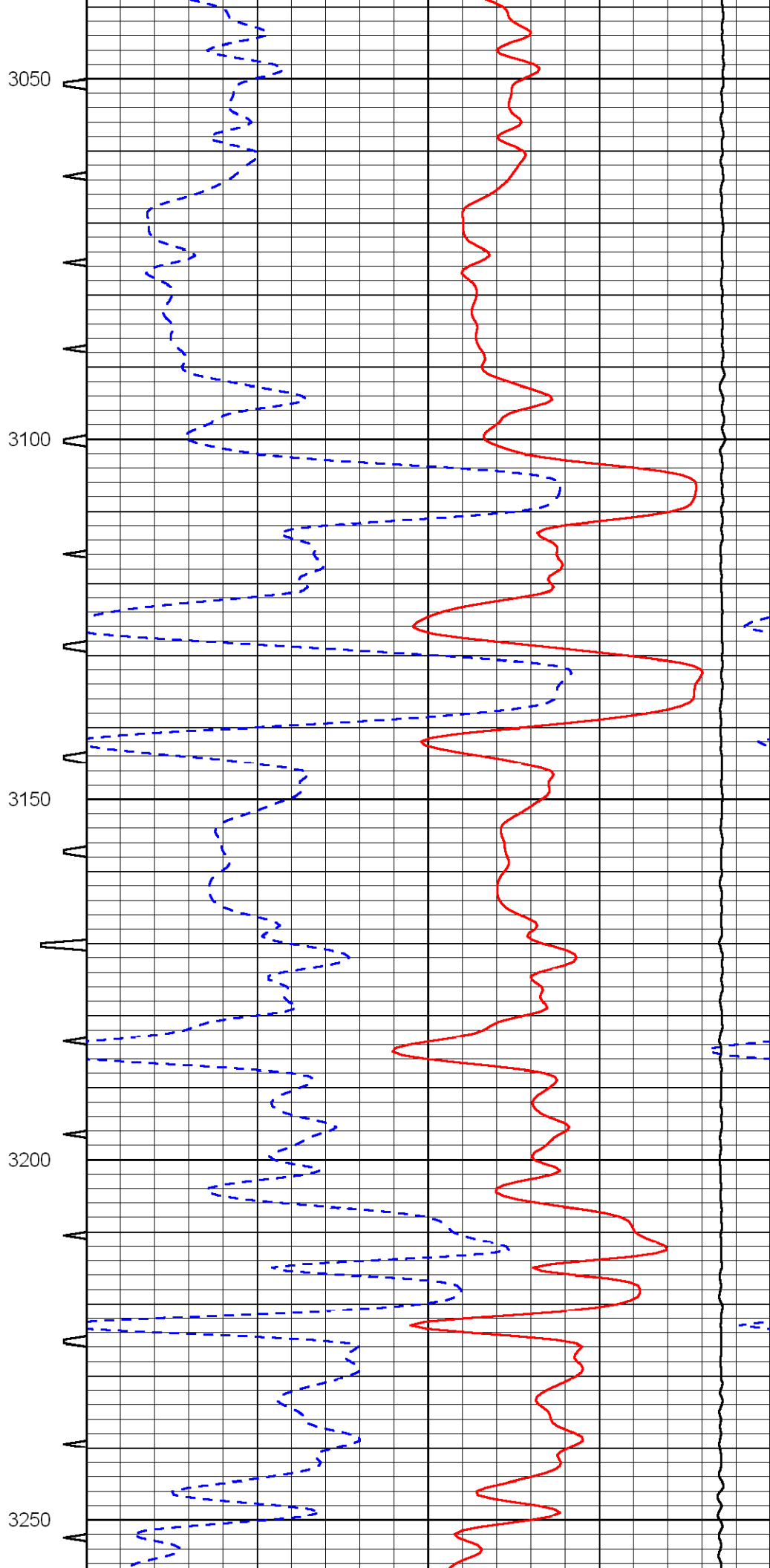
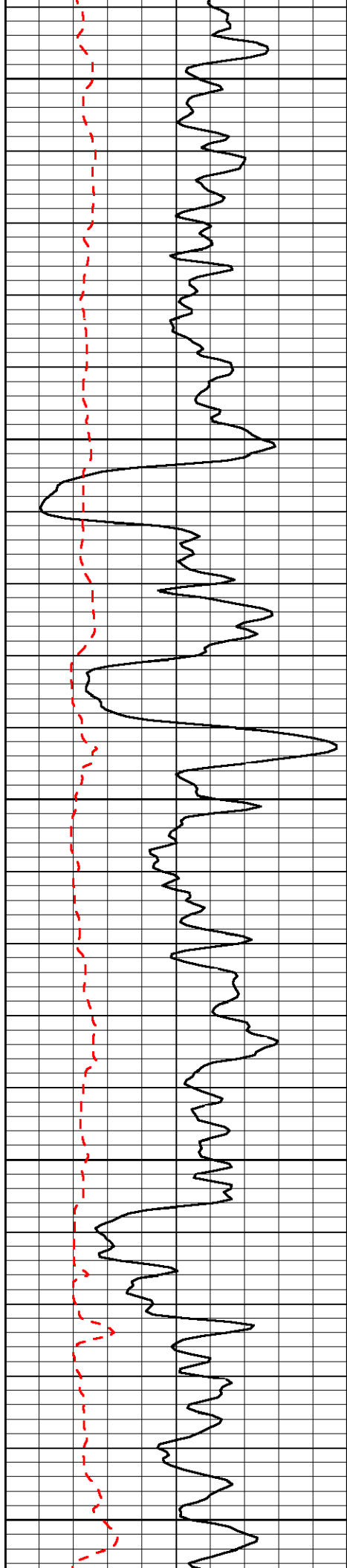


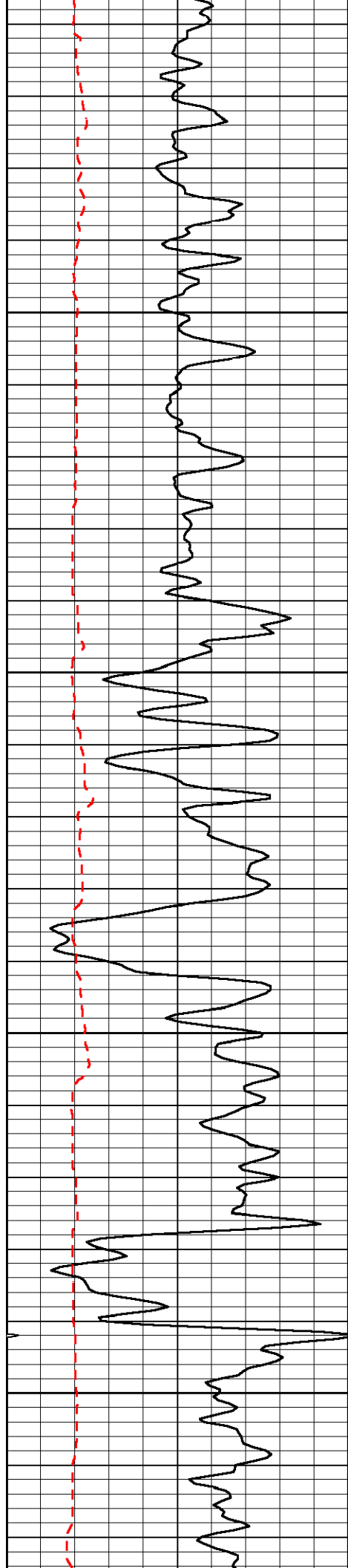










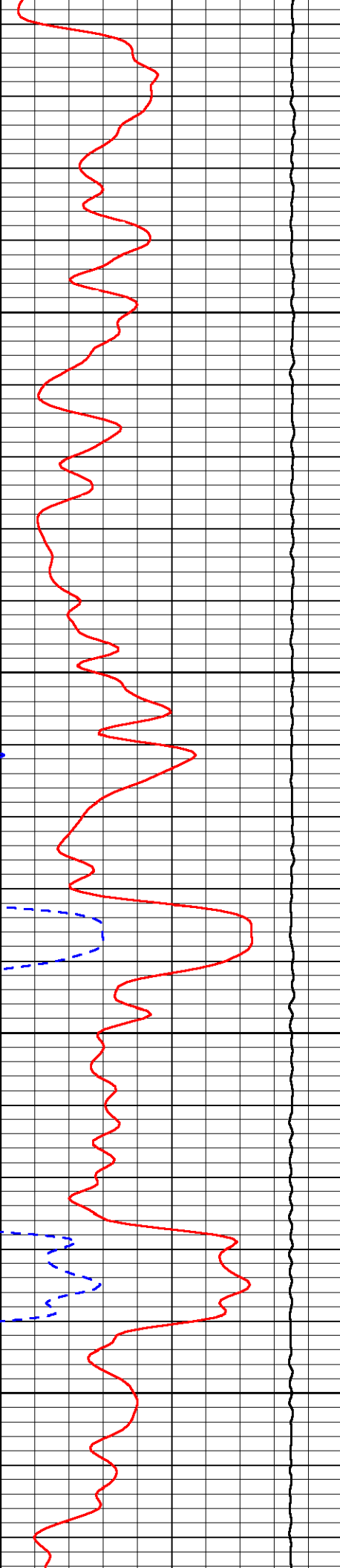
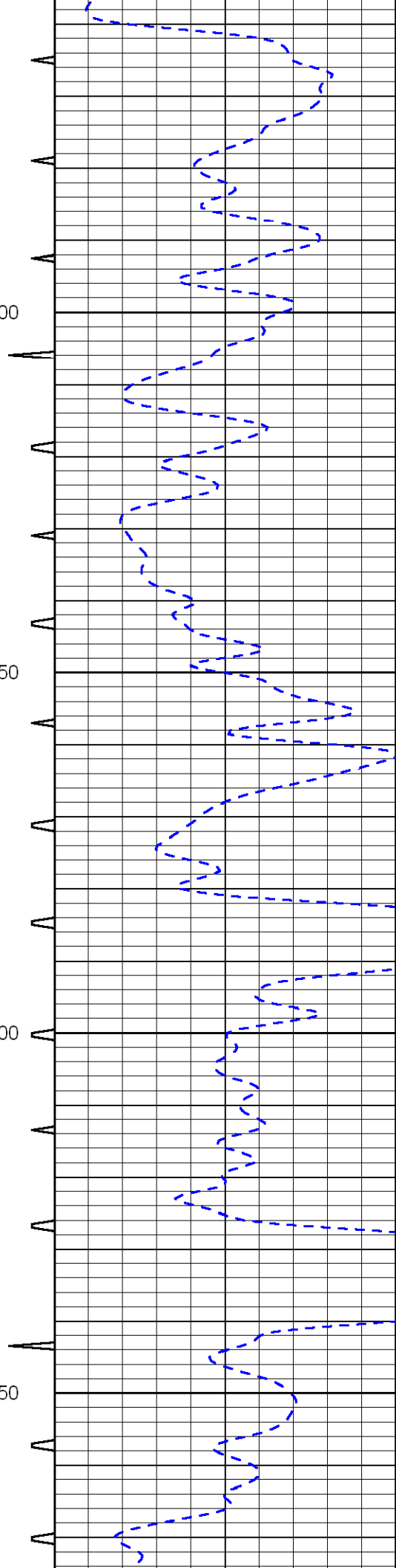


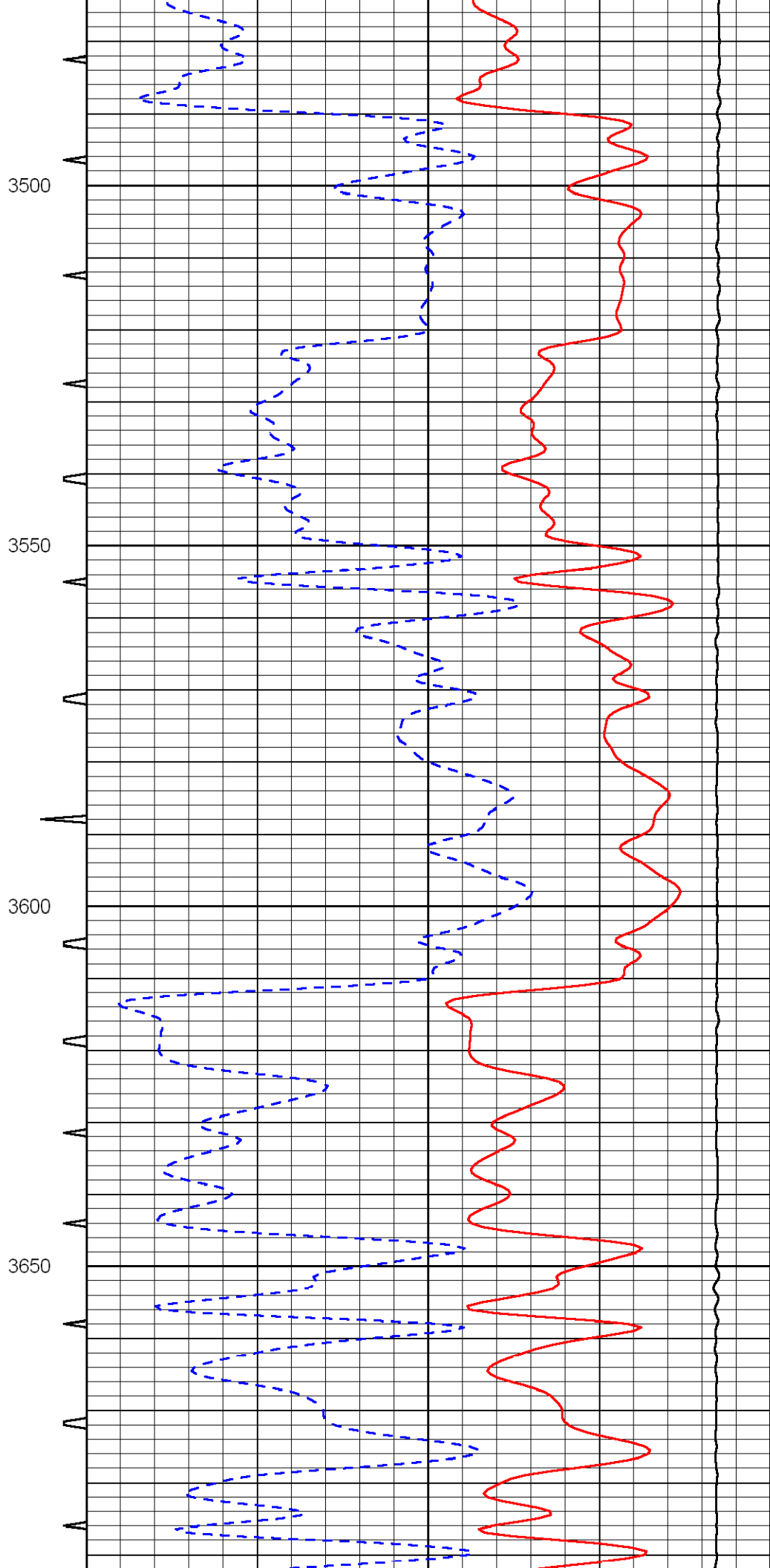
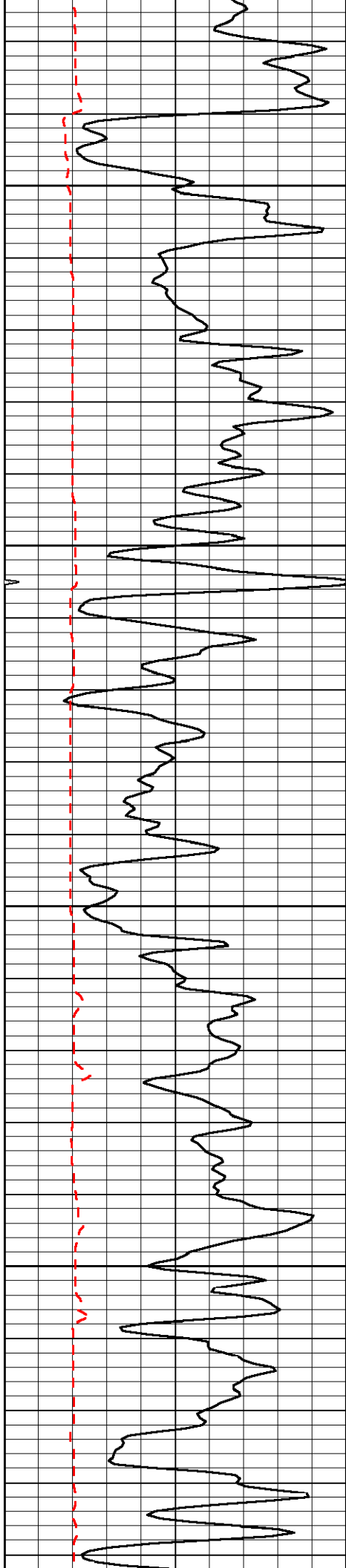
3300

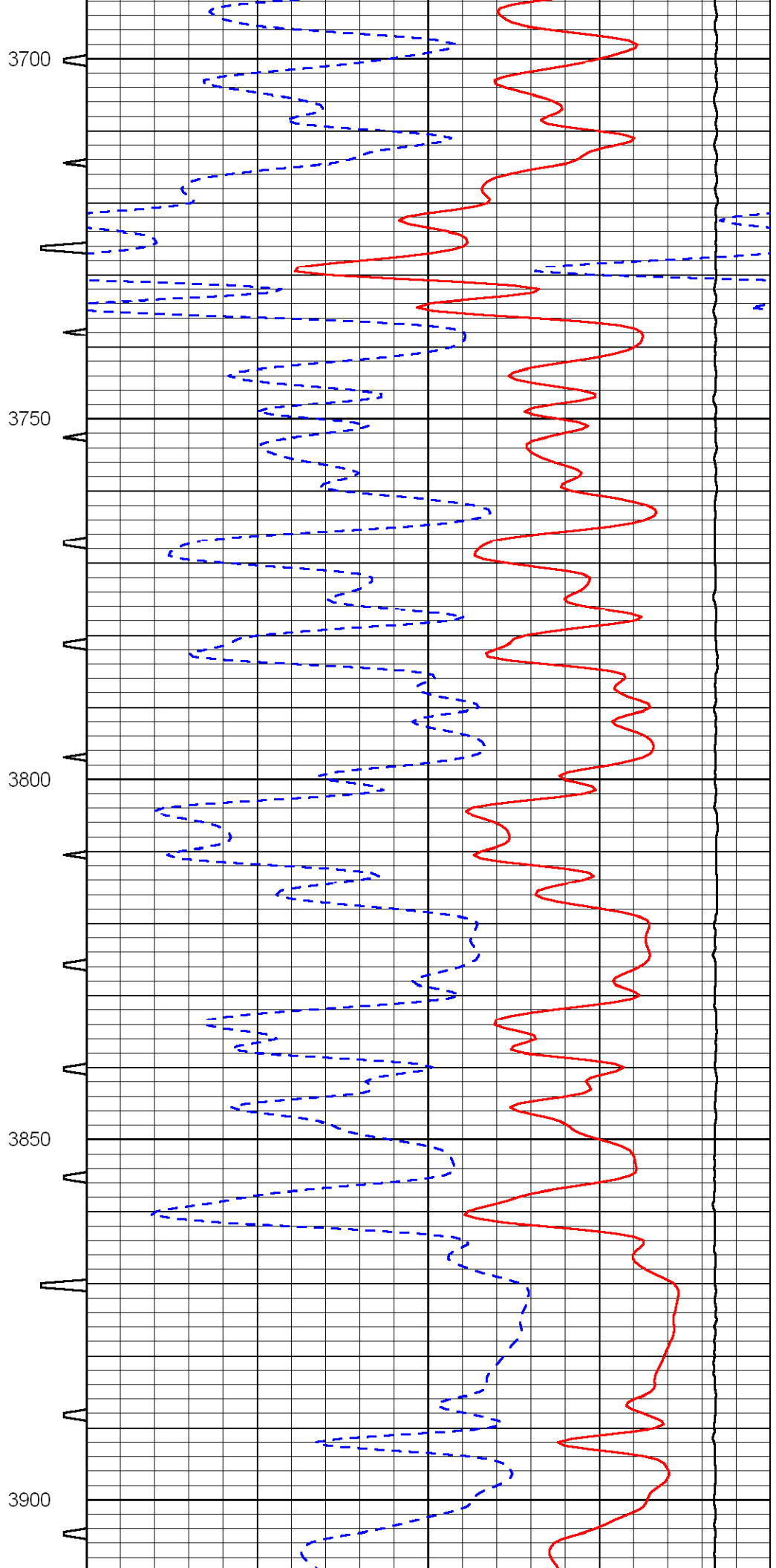
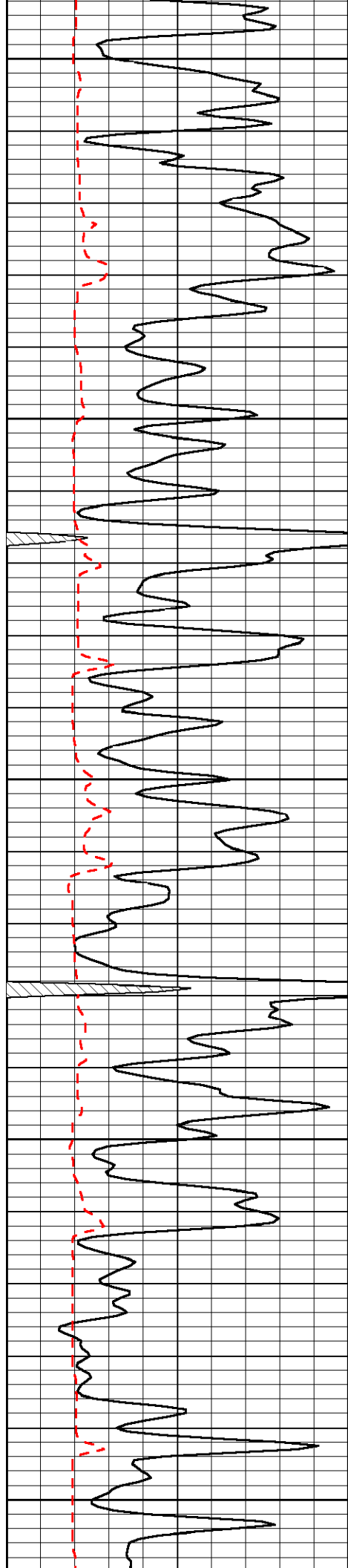
3350

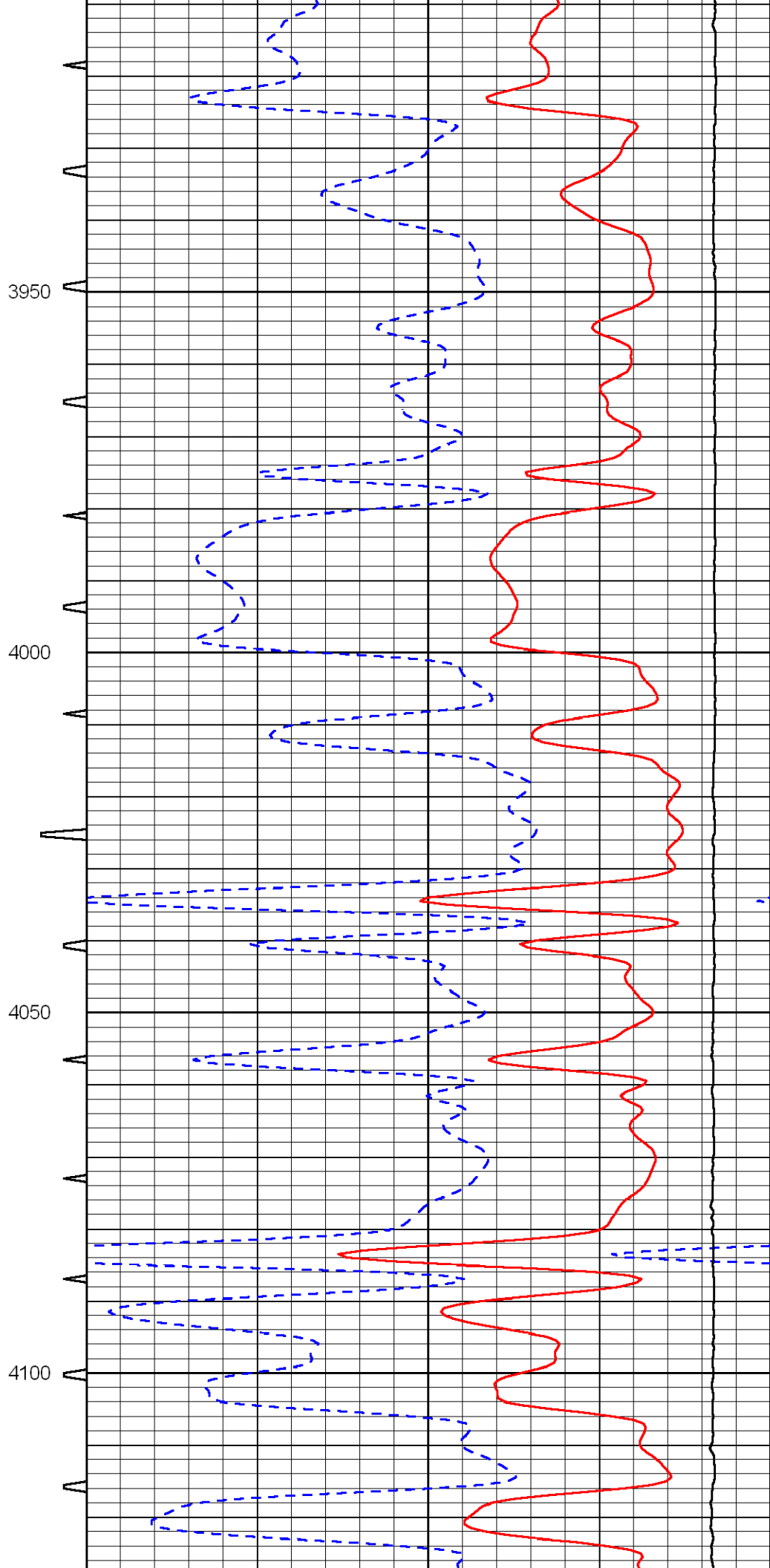
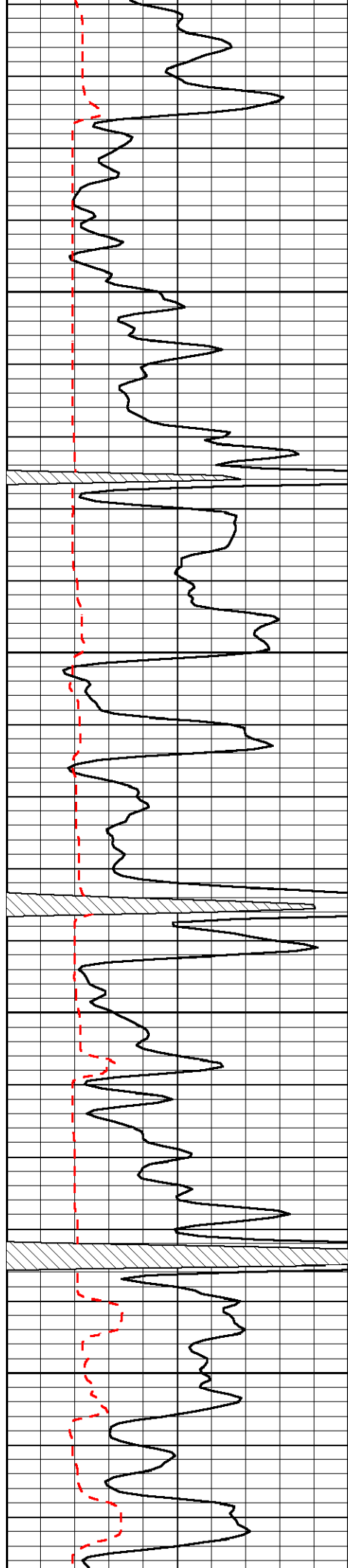
3400

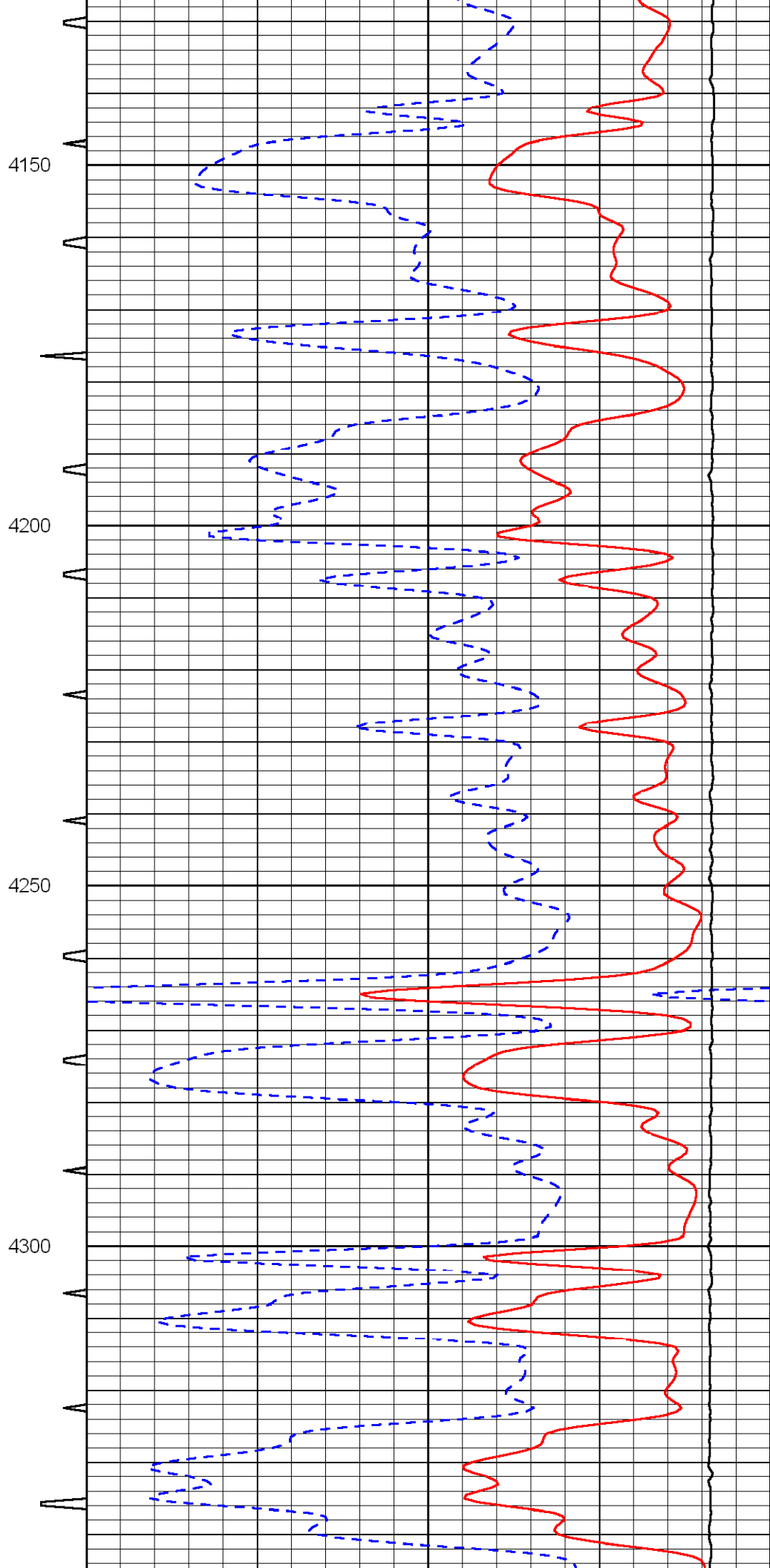
3450

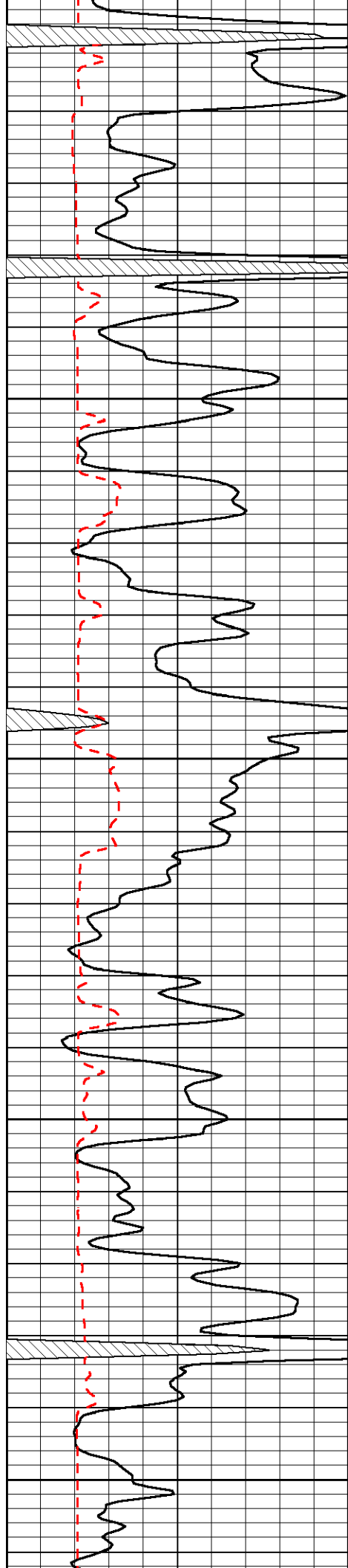












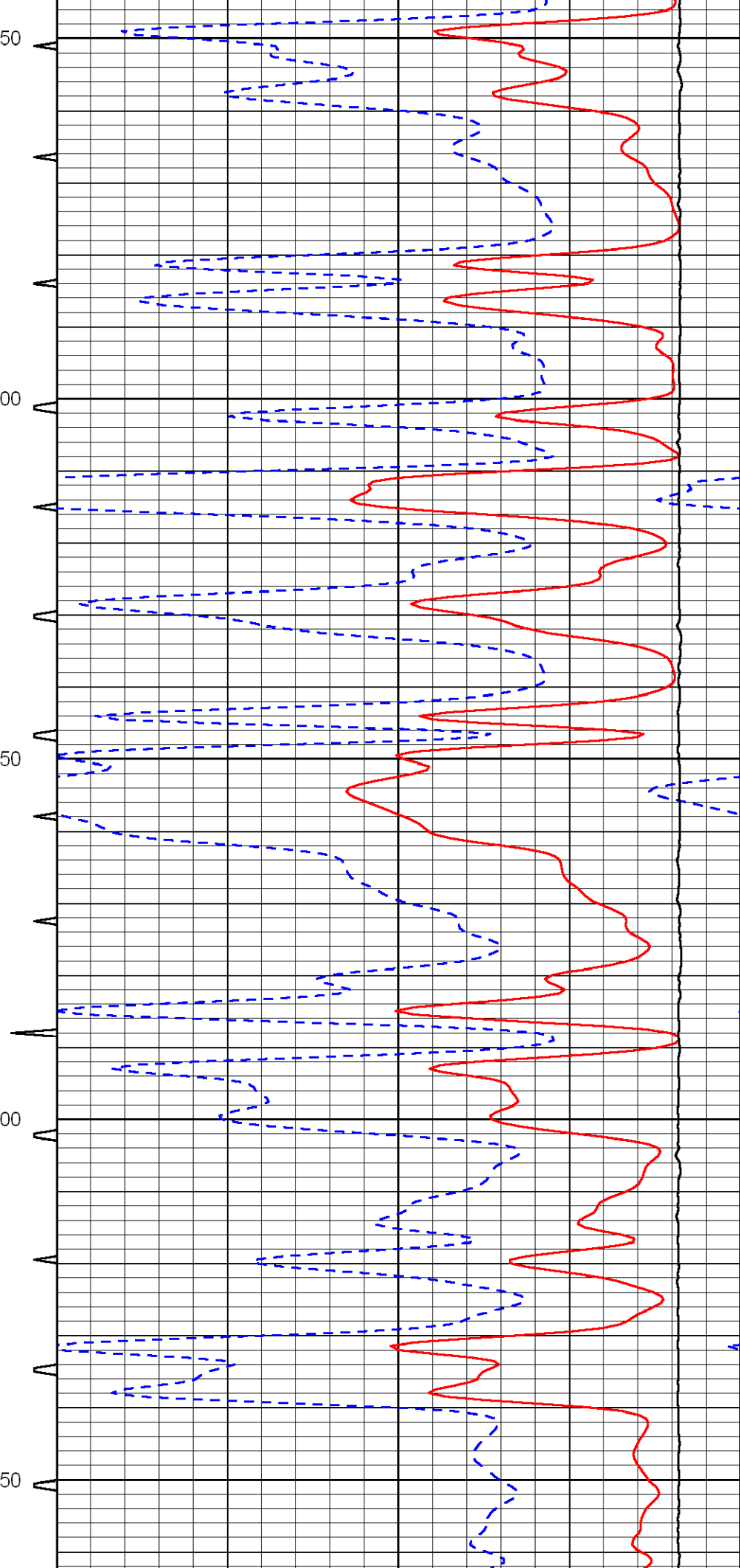
4350

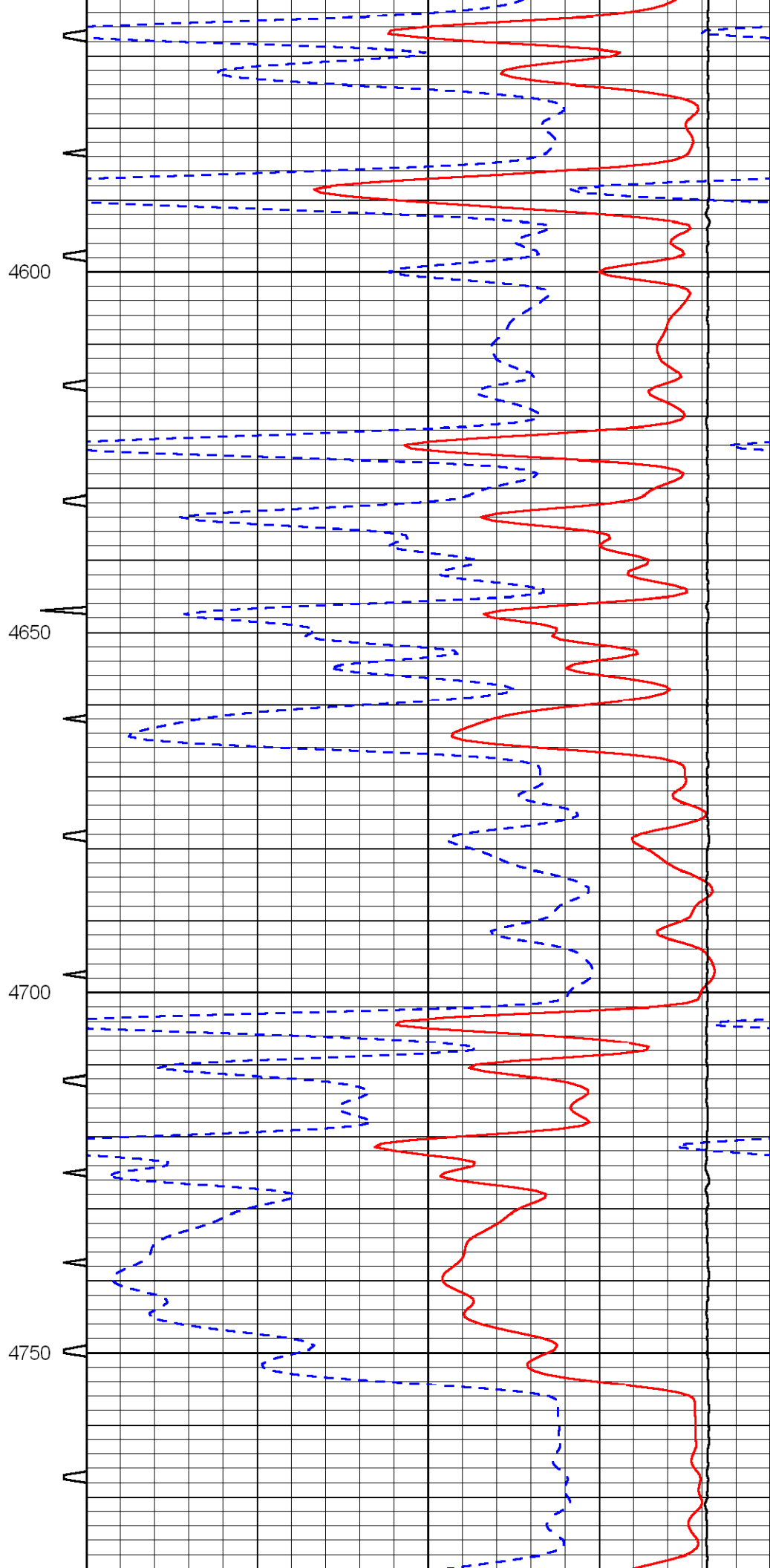
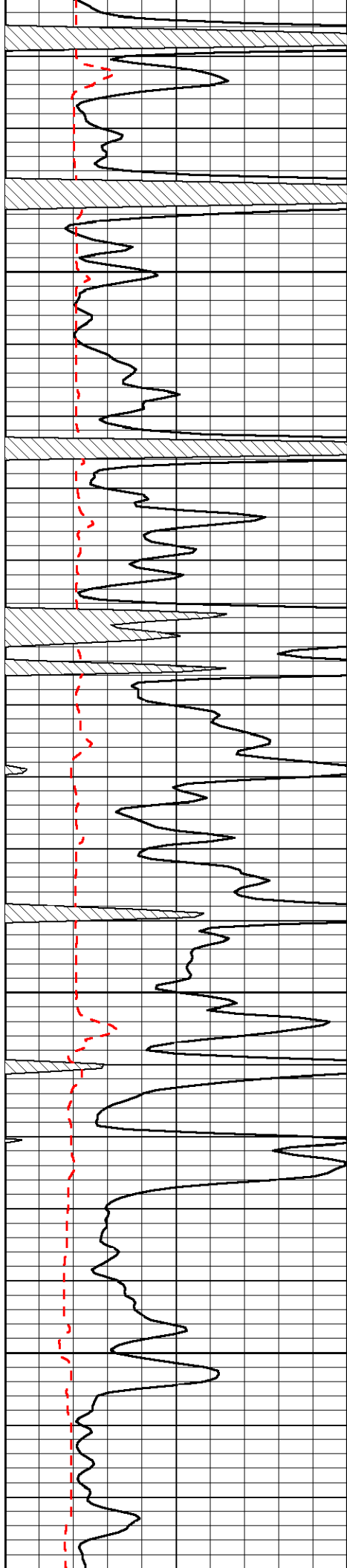
4400

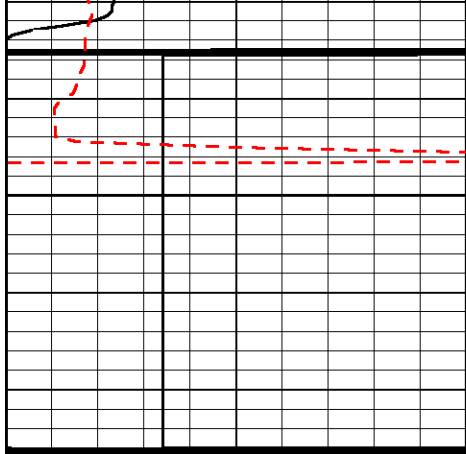
4450

4500

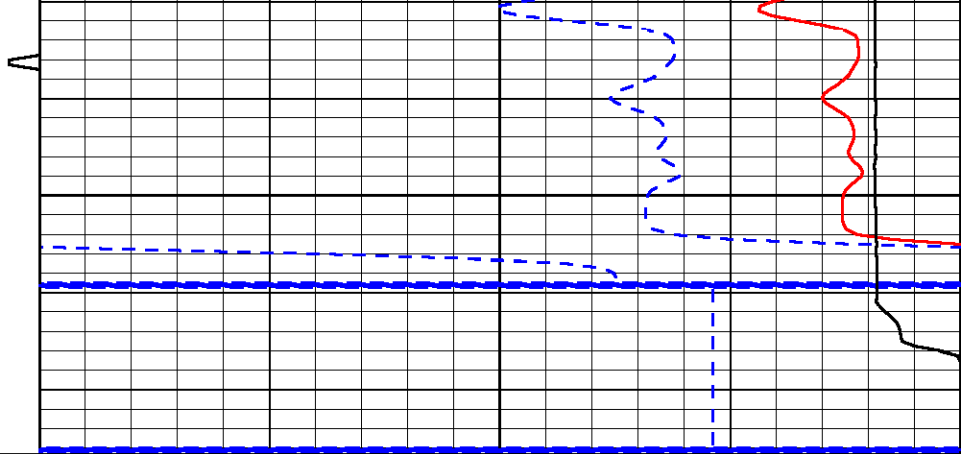
4550







4800



0	Gamma Ray	150	Sonic Int	140	DT	40
150	Gamma Ray	300	5	0	Sonic Porosity (Limestone)	-10
6	Caliper (GAPI)	16		15000	LTEN (lb)	0