



Dual Induction Log

DIGITAL LOG (785) 625-3858

API No.	15-163-23,772-00-00		
Company	Bowman Oil Company		
Well	Lunney / Schuck SW No. 1		
Field	Solobow Southeast		
County	Rooks	State	Kansas
Location	1877' FSL & 558' FWL		
Sec: 31	Twp: 6S	Rge: 20W	Other Services CNL/CDL MEL
Permanent Datum	Ground Level	Elevation 2231	Elevation
Log Measured From	Kelly Bushing	5 Ft. Above Perm. Datum	K.B. 2236
Drilling Measured From	Froth Kelly Bushing		D.F. 2231
			G.L. 2231

Date	09/05/2009	
Run Number	One	
Depth Driller	3720	
Depth Logger	3722	
Bottom Logged Interval	3721	
Top Log Interval	200	
Casing Driller	8.625 @ 215	
Casing Logger	213	
Bit Size	7.875	
Type Fluid in Hole	Chemical	
Salinity, ppm CL	800	
Density / Viscosity	9.1	49
pH / Fluid Loss	11.5	8.8
Source of Sample	Flowline	
Rm @ Meas. Temp	1.2 @ 65	
Rmf @ Meas. Temp	.9 @ 65	
Rmc @ Meas. Temp	1.62 @ 65	
Source of Rmf / Rmc	Charts	
Rm @ BHT	.68 @ 115	
Operating Rig Time	3 Hours	
Max Rec. Temp. F	115	
Equipment Number	10	
Location	Hays	
Recorded By	Jason Wellbrock	
Witnessed By	Ed Glassman	

<<< Fold Here >>>

All interpretations are opinions based on inferences from electrical or other measurements and we cannot and do not guarantee the accuracy or correctness of any interpretation, and we shall not, except in the case of gross or willful negligence on our part, be liable or responsible for any loss, costs, damages, or expenses incurred or sustained by anyone resulting from any interpretation made by any of our officers, agents or employees. These interpretations are also subject to our general terms and conditions set out in our current Price Schedule.

Comments

Thank you for using Log-Tech, Inc.
 (785) 625-3858

Damar Curve 11N, 1 W, 1/2 N, E Into

Database File: bowmanhd.db
 Dataset Pathname: dil/bow2in
 Presentation Format: dil2in
 Dataset Creation: Sat Sep 05 09:27:07 2009
 Charted by: Depth in Feet scaled 1:600

0 Gamma Ray 150
-200 SP 0

0 Shallow Resistivity 50
0 Deep Resistivity 50

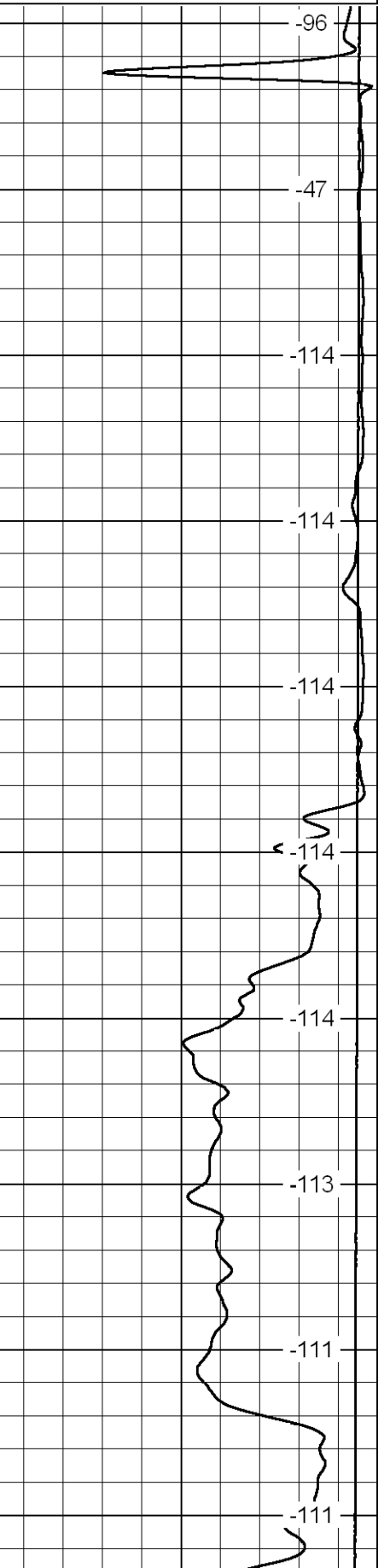
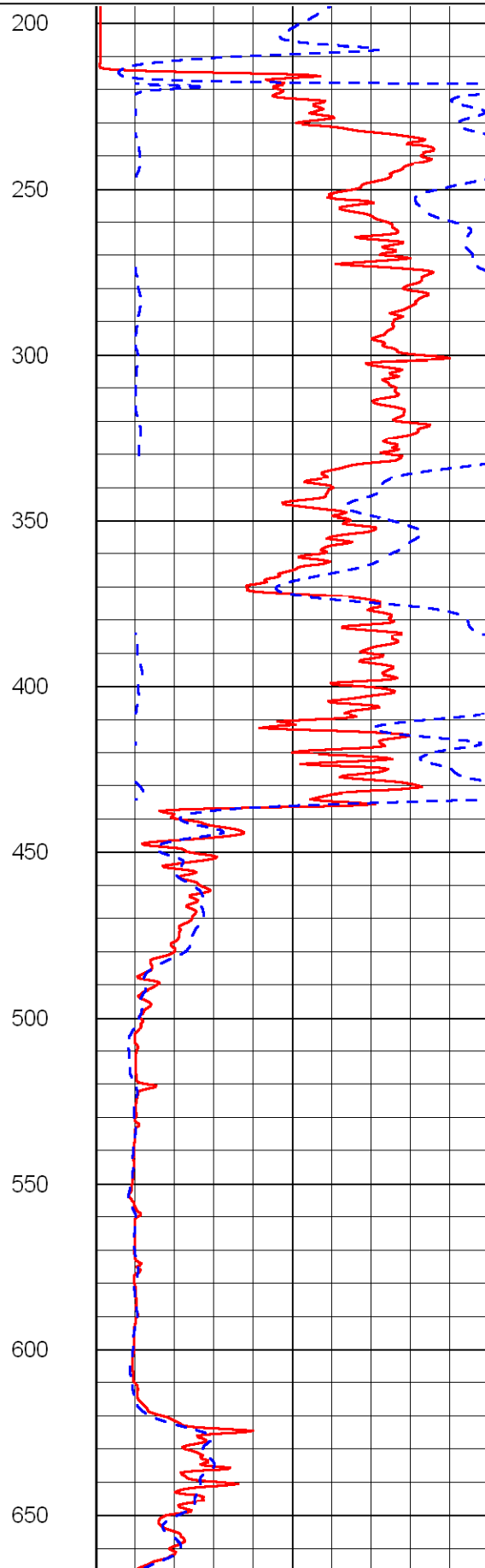
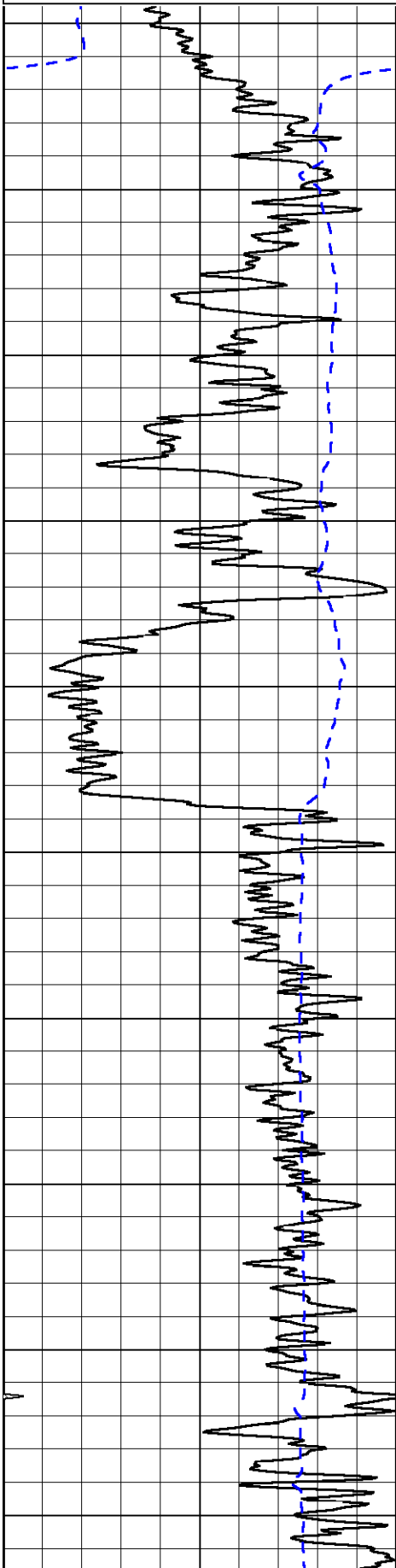
LSPD

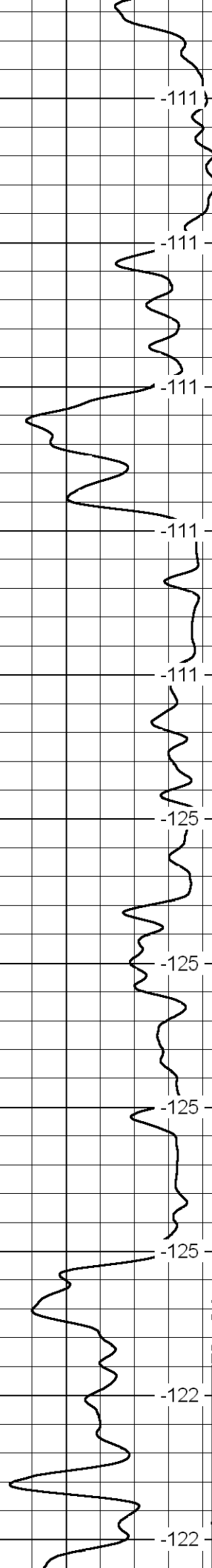
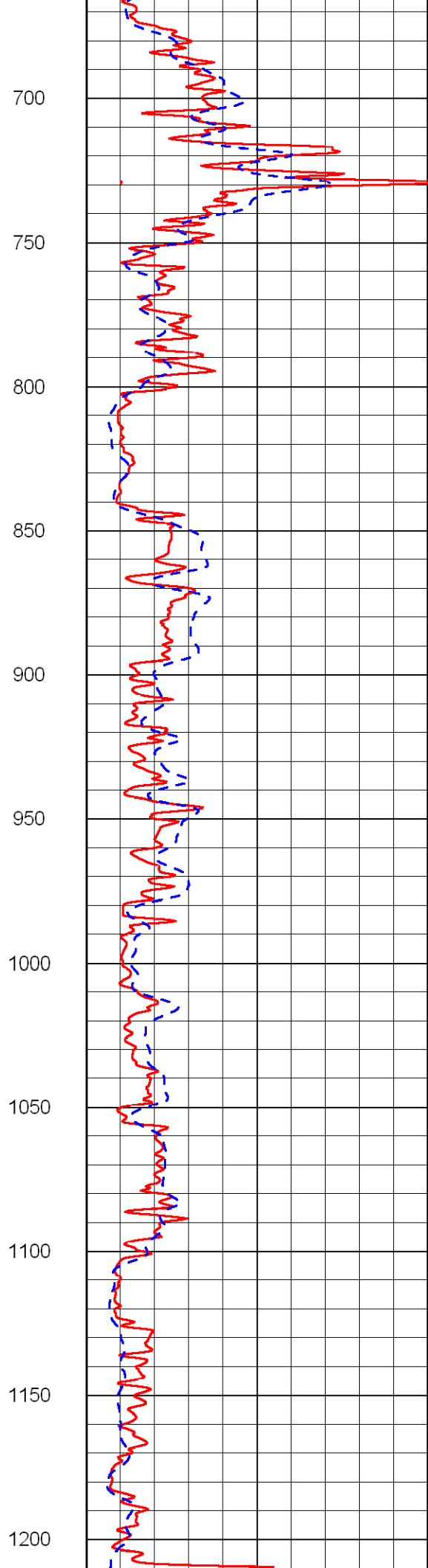
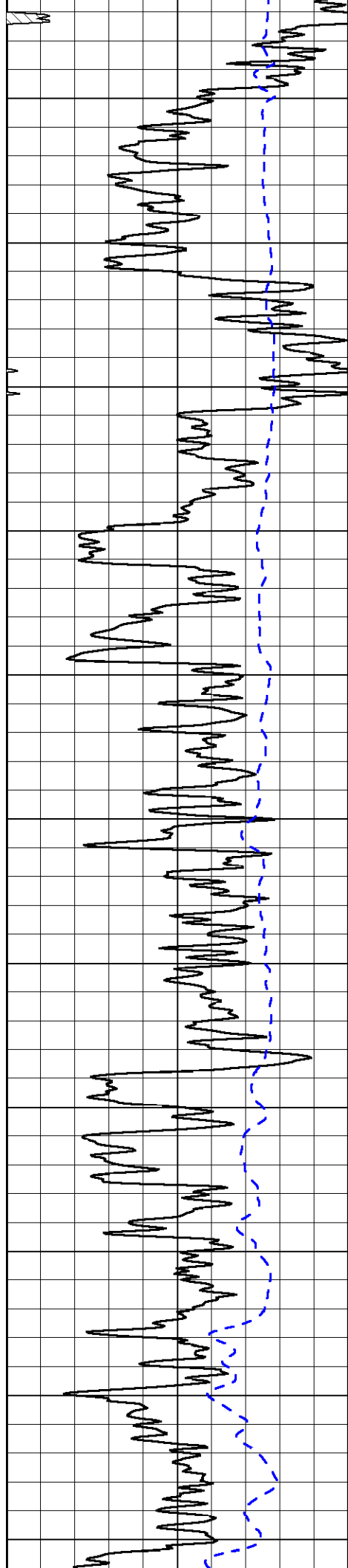
1000 Conductivity 0

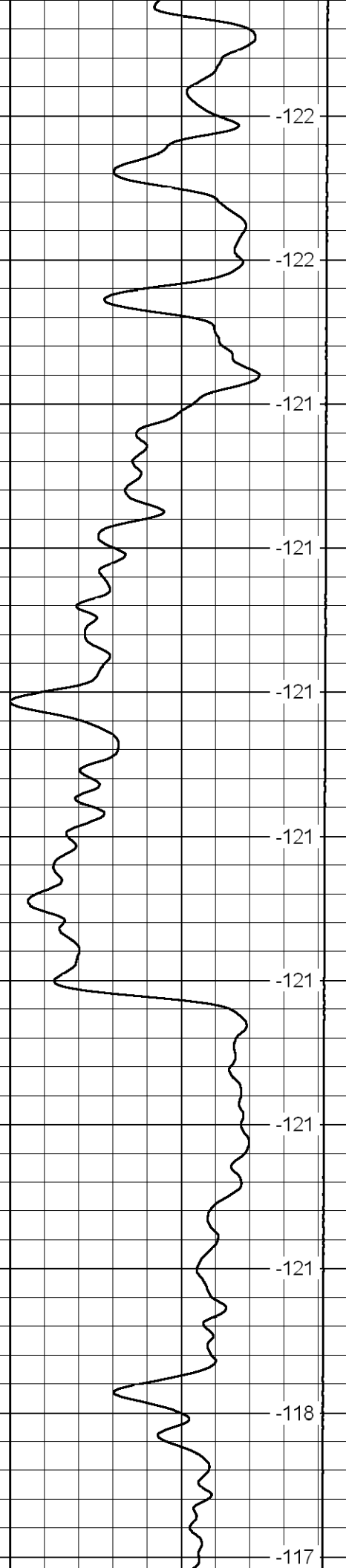
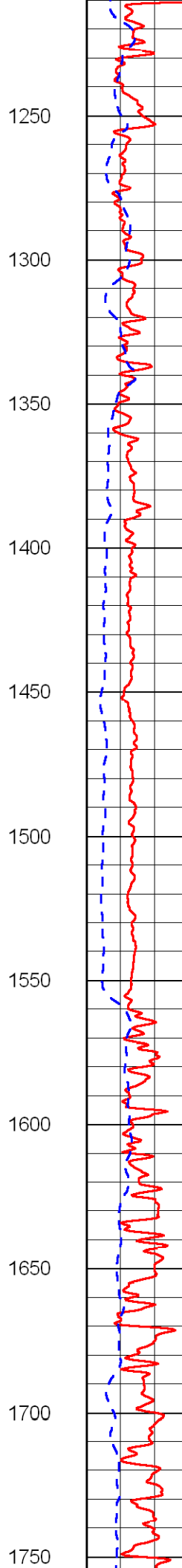
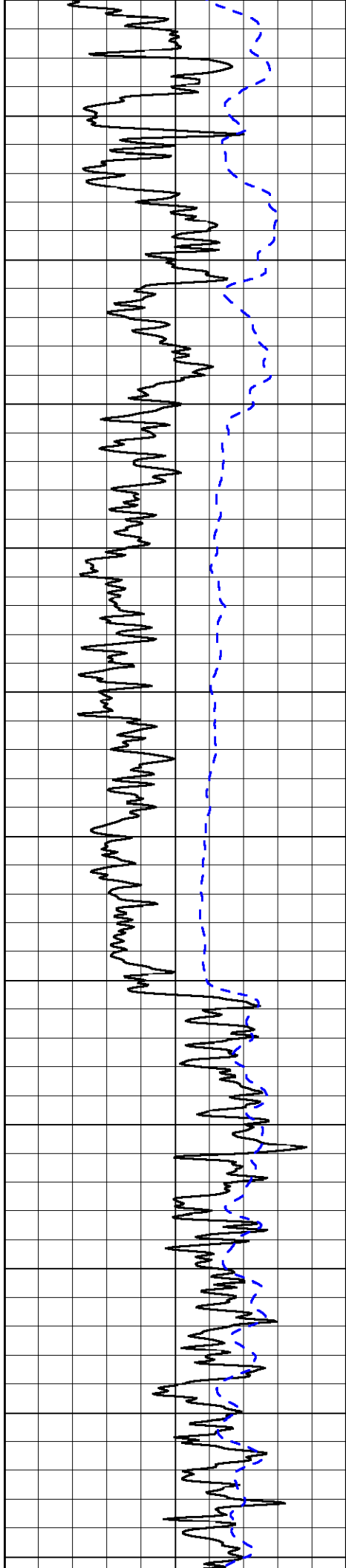
15000 Line Tension 0

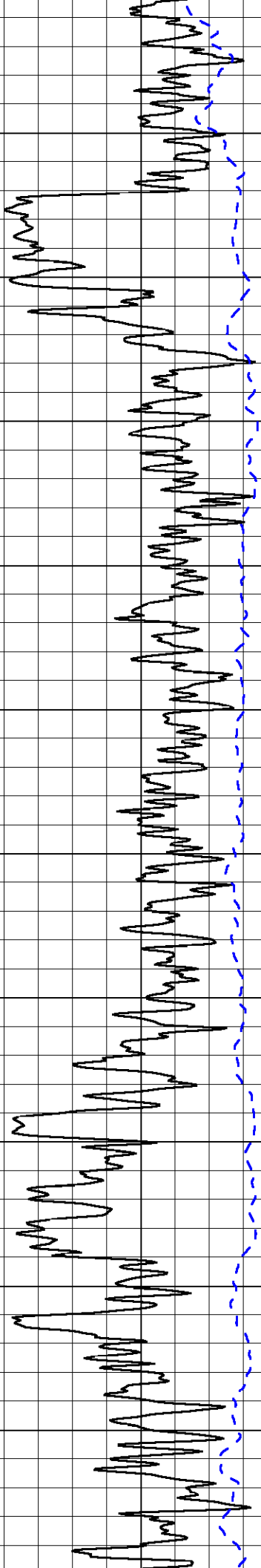
50 Shallow Resistivity 500

50 Deep Resistivity 500

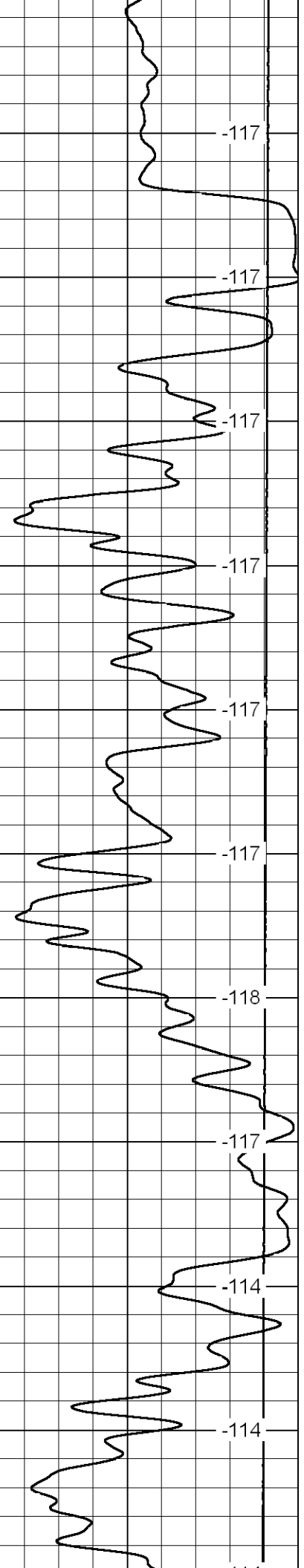
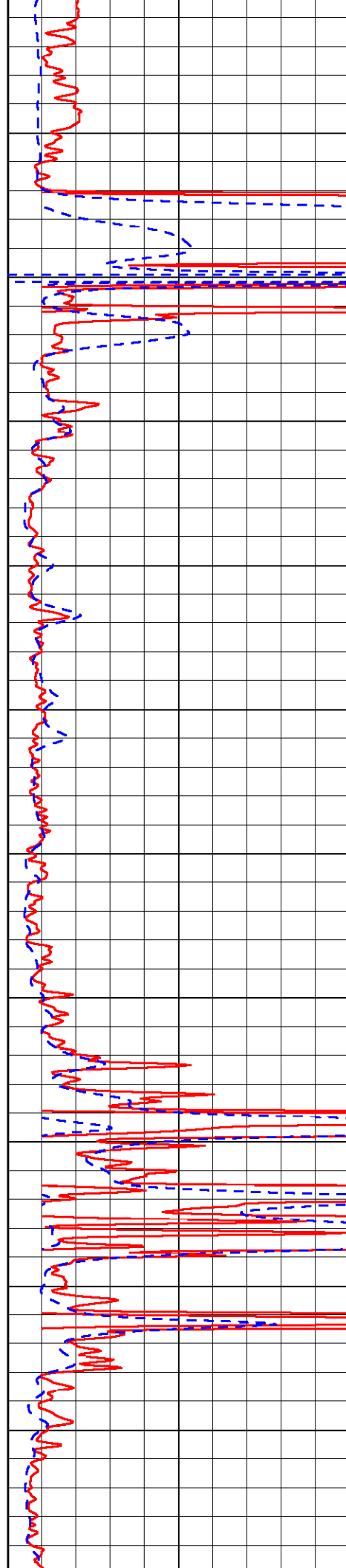




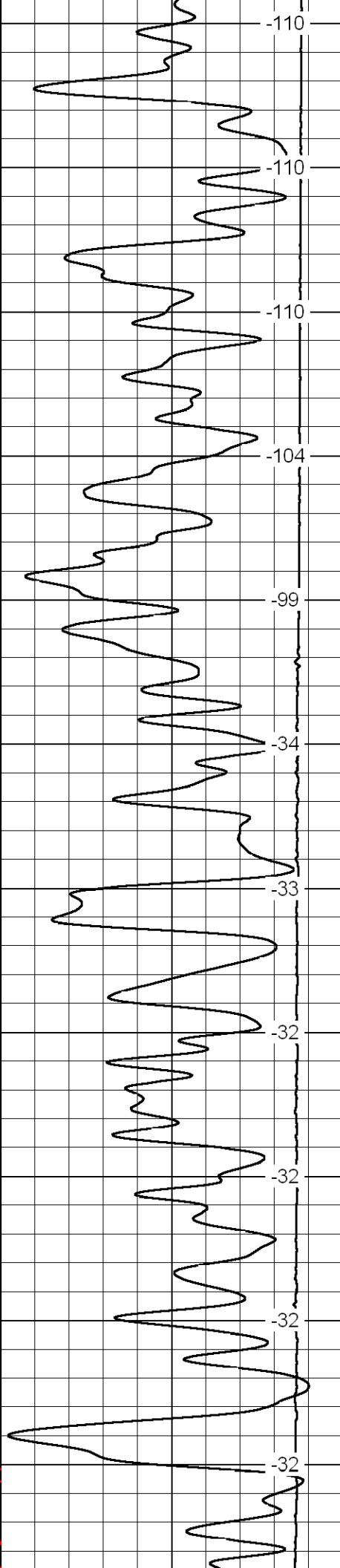
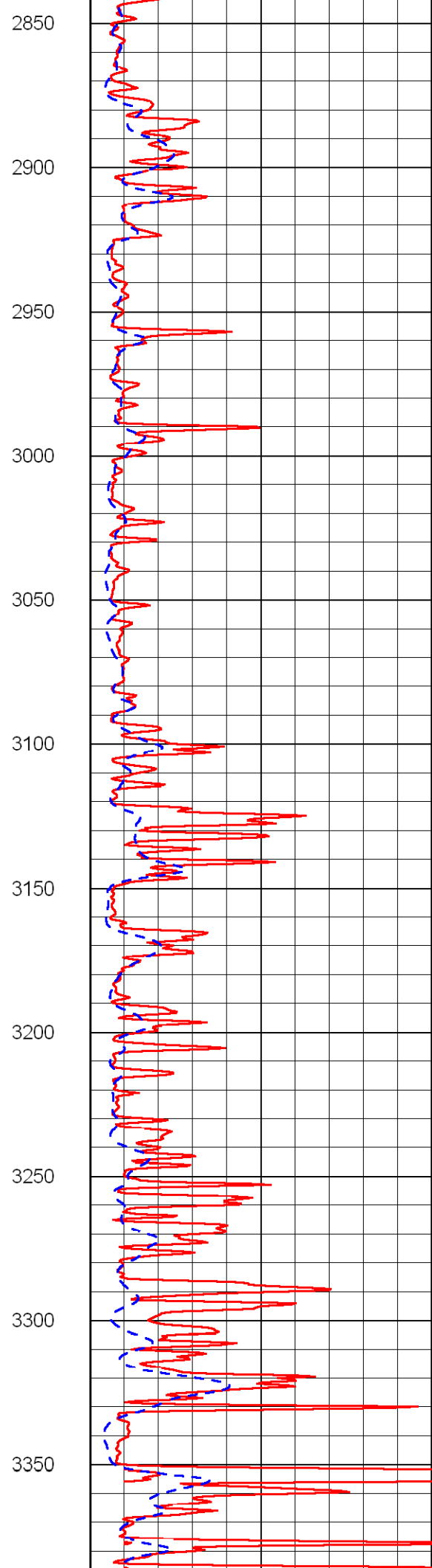
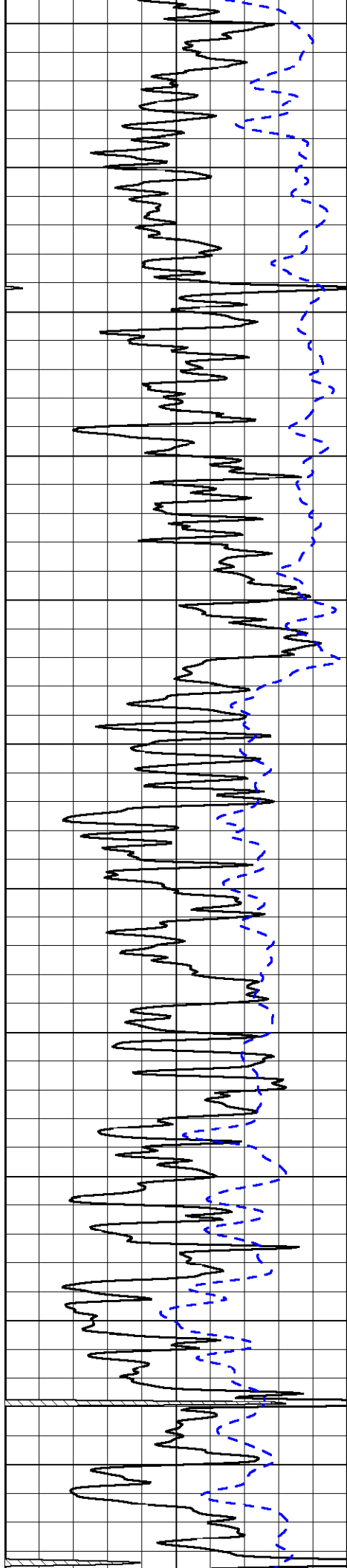


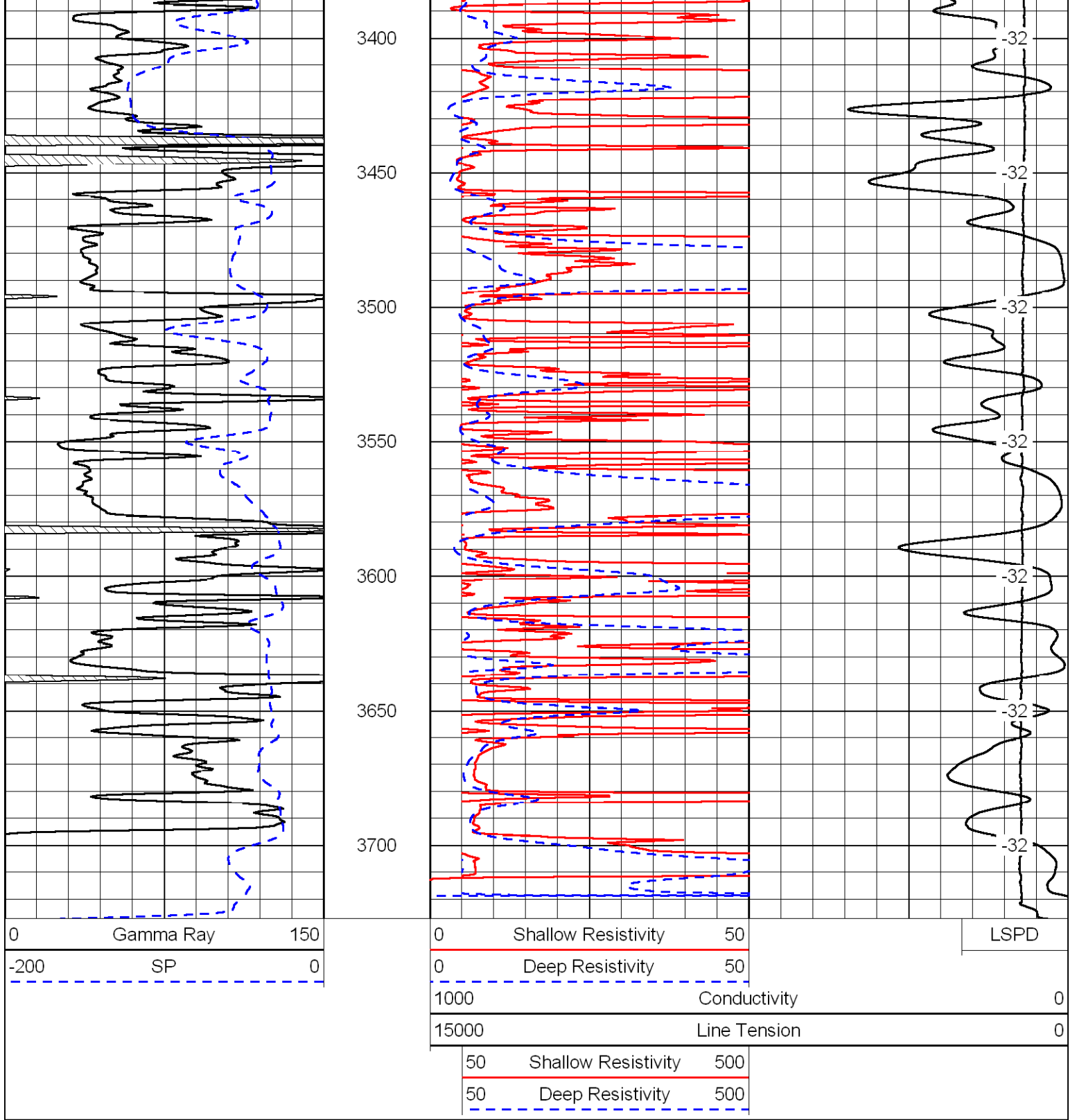


1800
1850
1900
1950
2000
2050
2100
2150
2200
2250

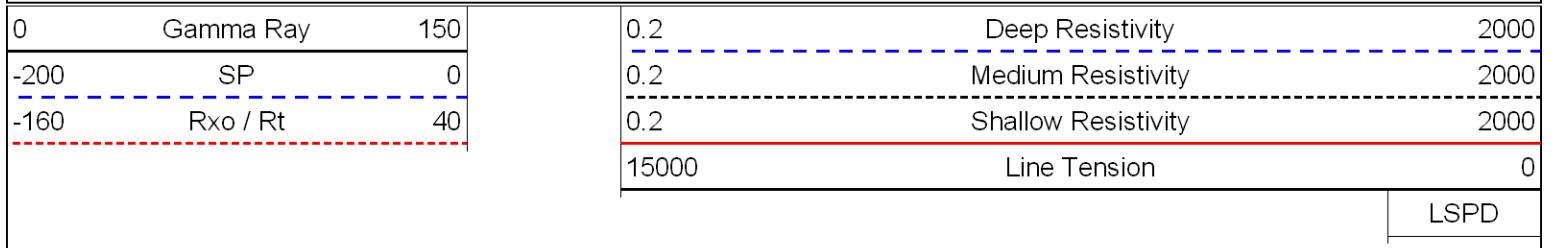


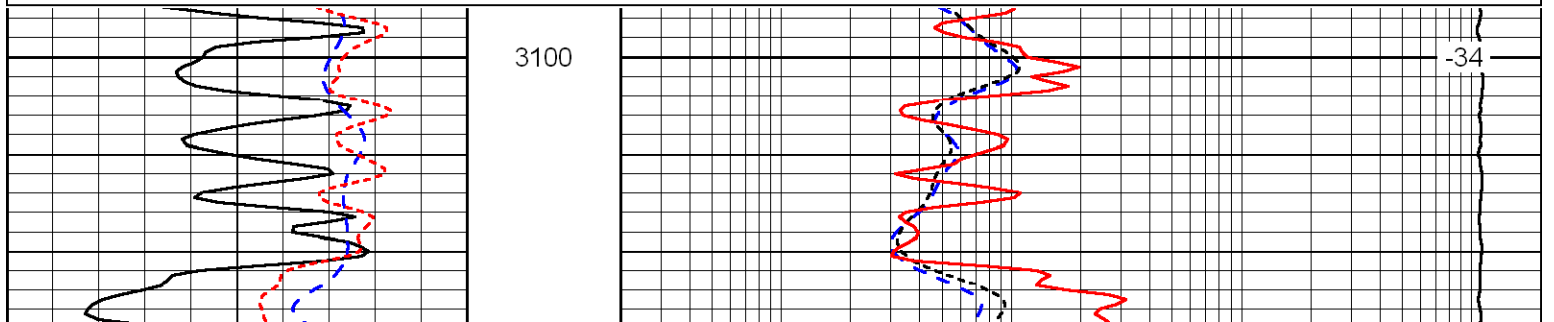
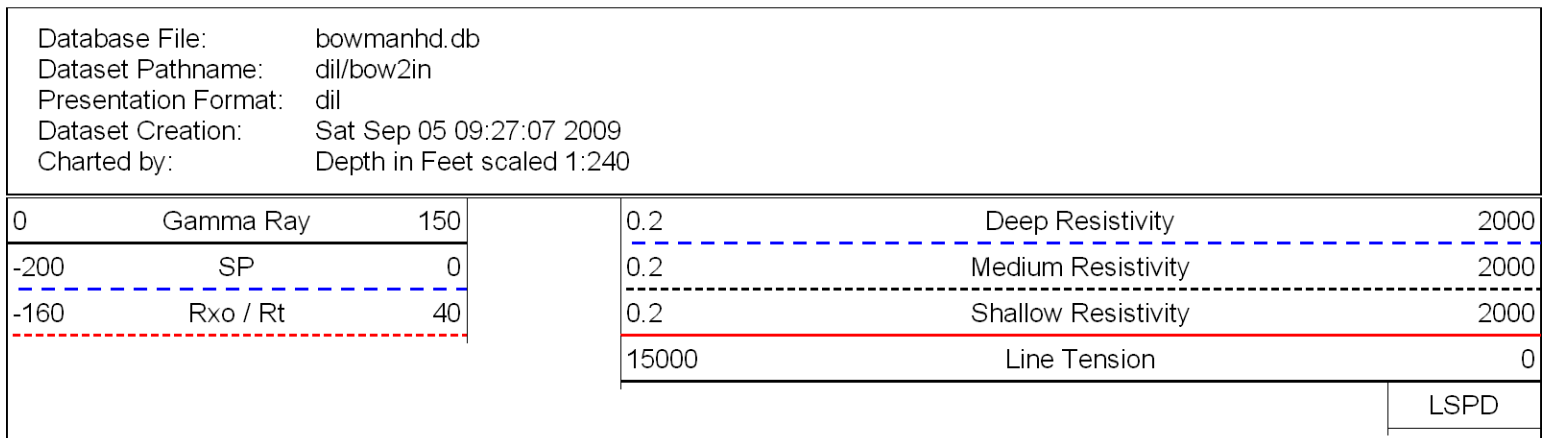
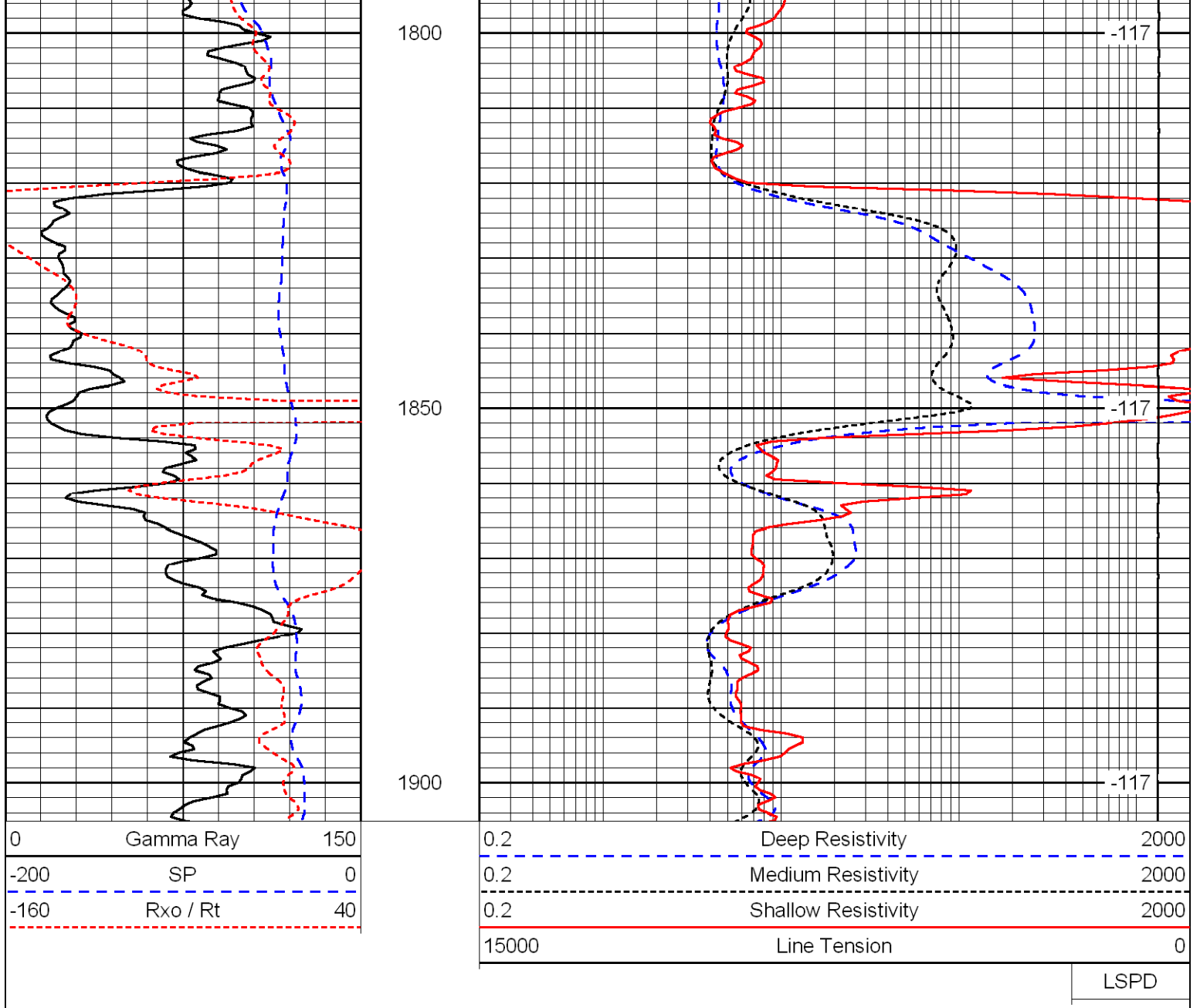
-117
-117
-117
-117
-117
-117
-118
-117
-114
-114

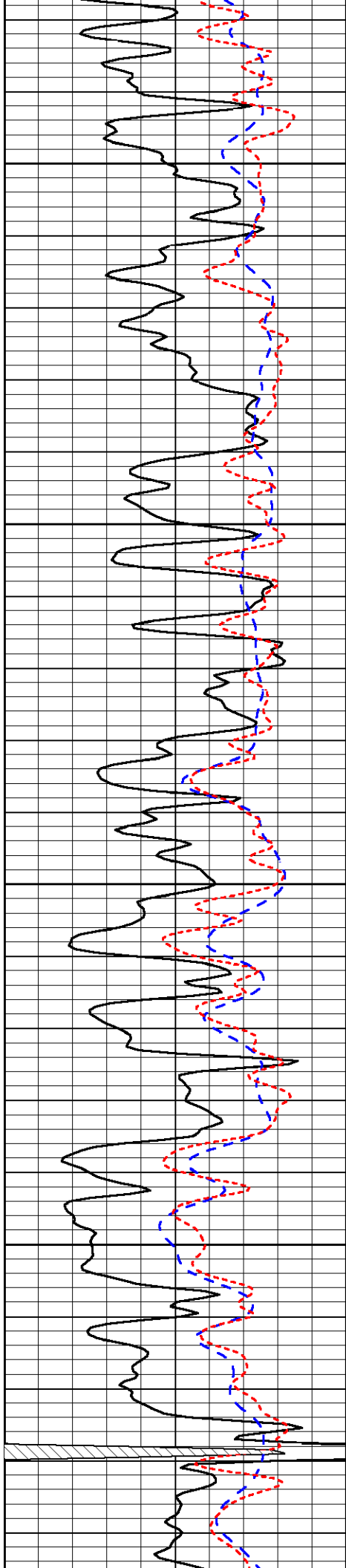




Database File: bowmanhd.db
 Dataset Pathname: dil/bow2in
 Presentation Format: dil
 Dataset Creation: Sat Sep 05 09:27:07 2009
 Charted by: Depth in Feet scaled 1:240





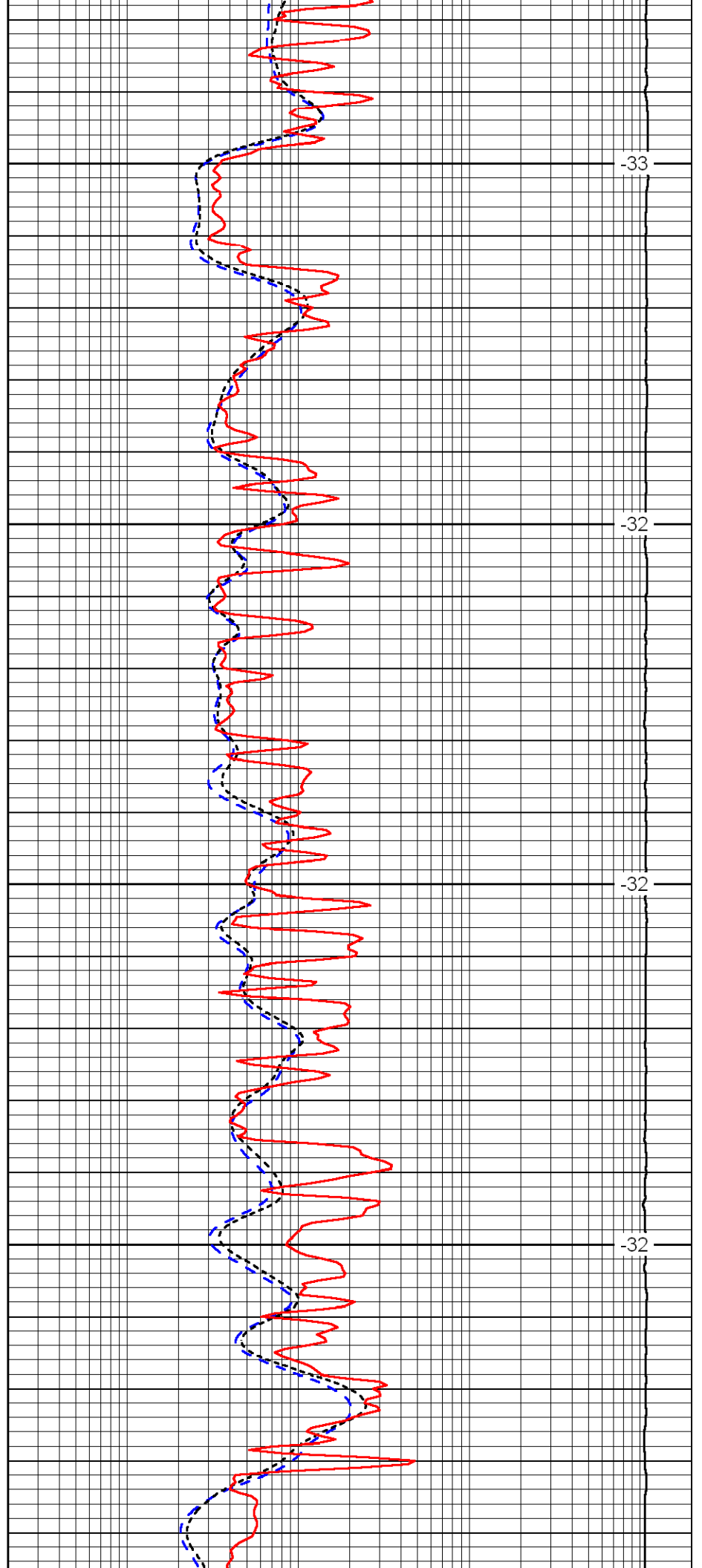


3150

3200

3250

3300

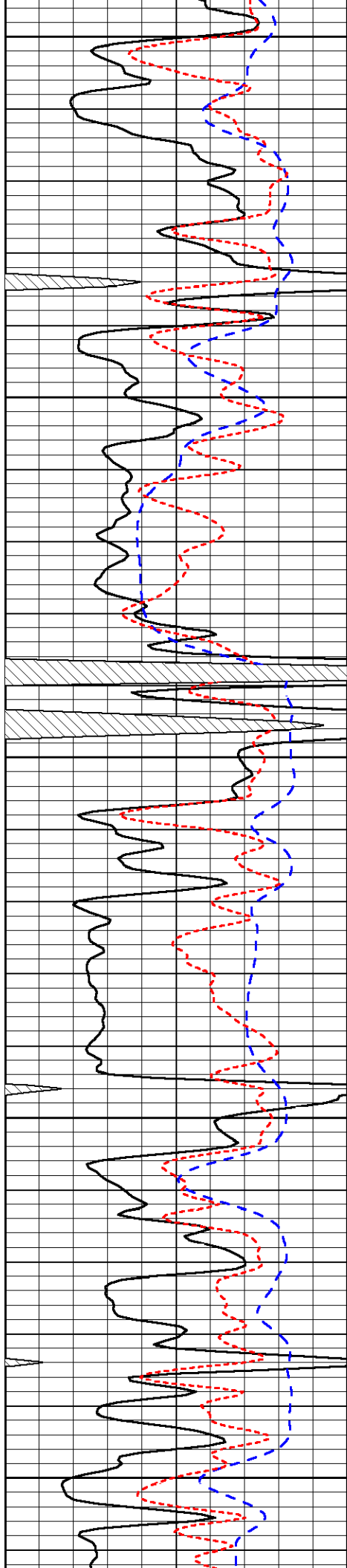


-33

-32

-32

-32



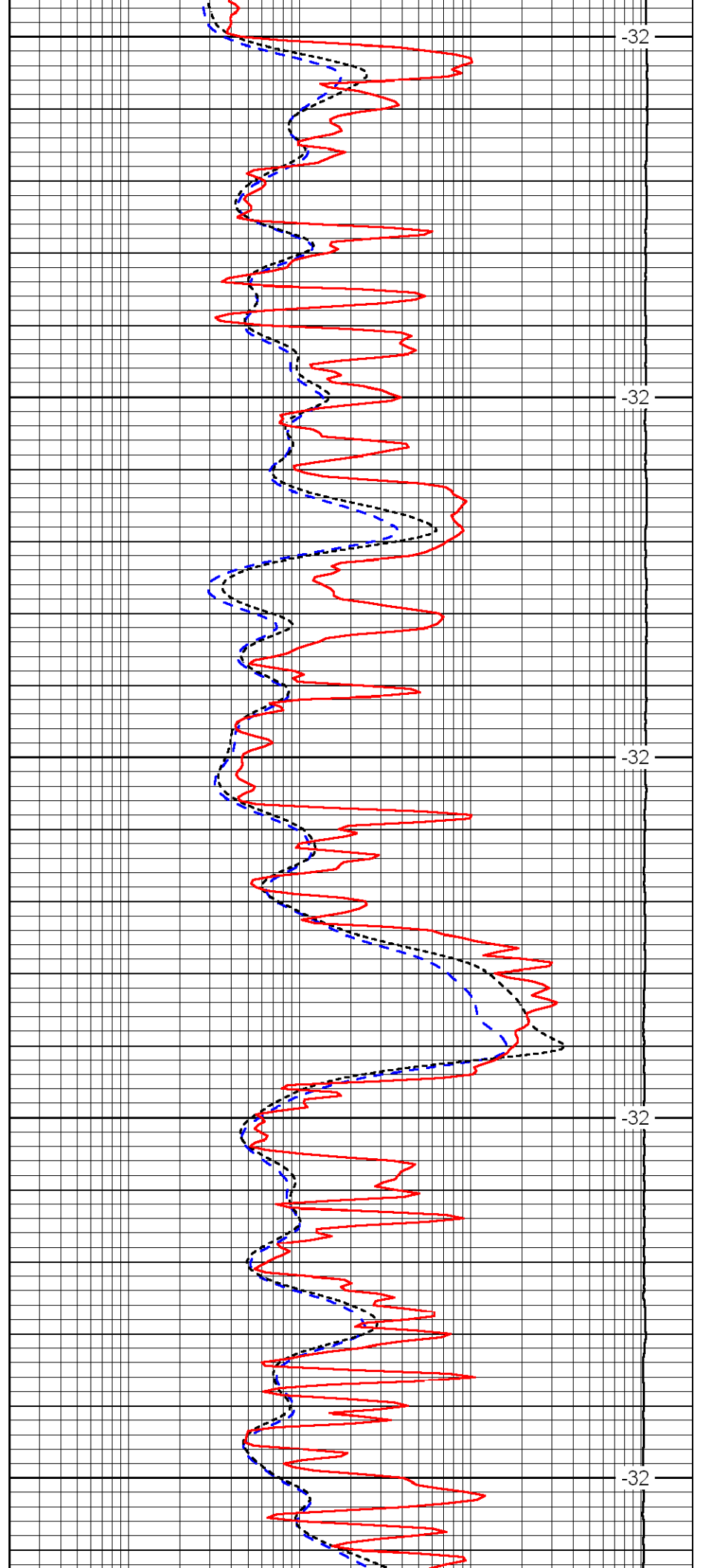
3350

3400

3450

3500

3550



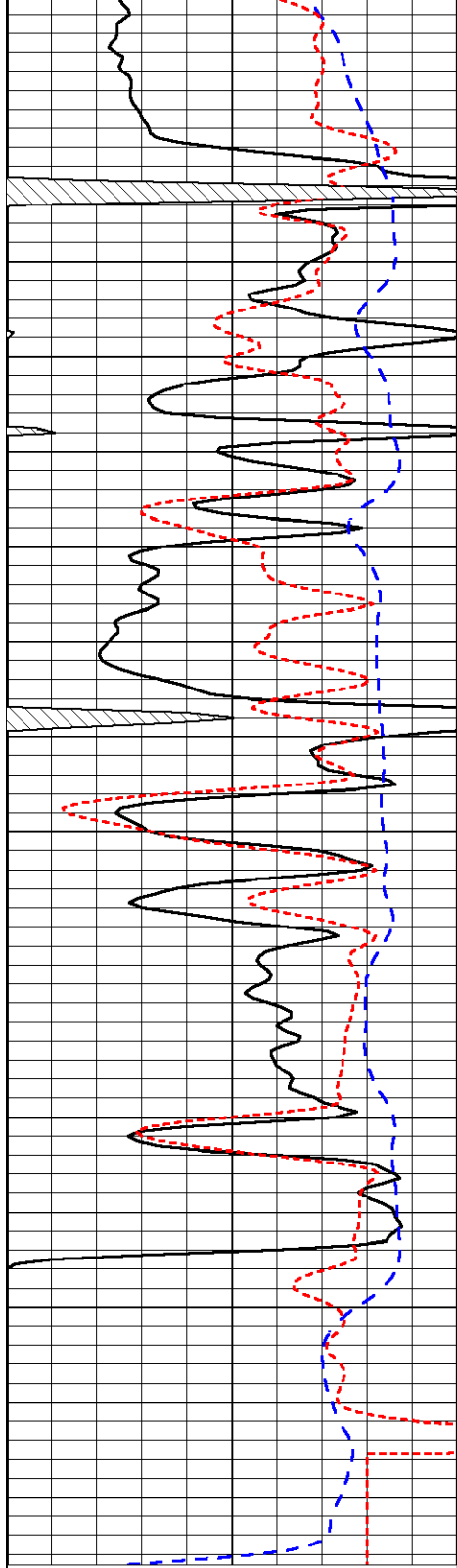
-32

-32

-32

-32

-32

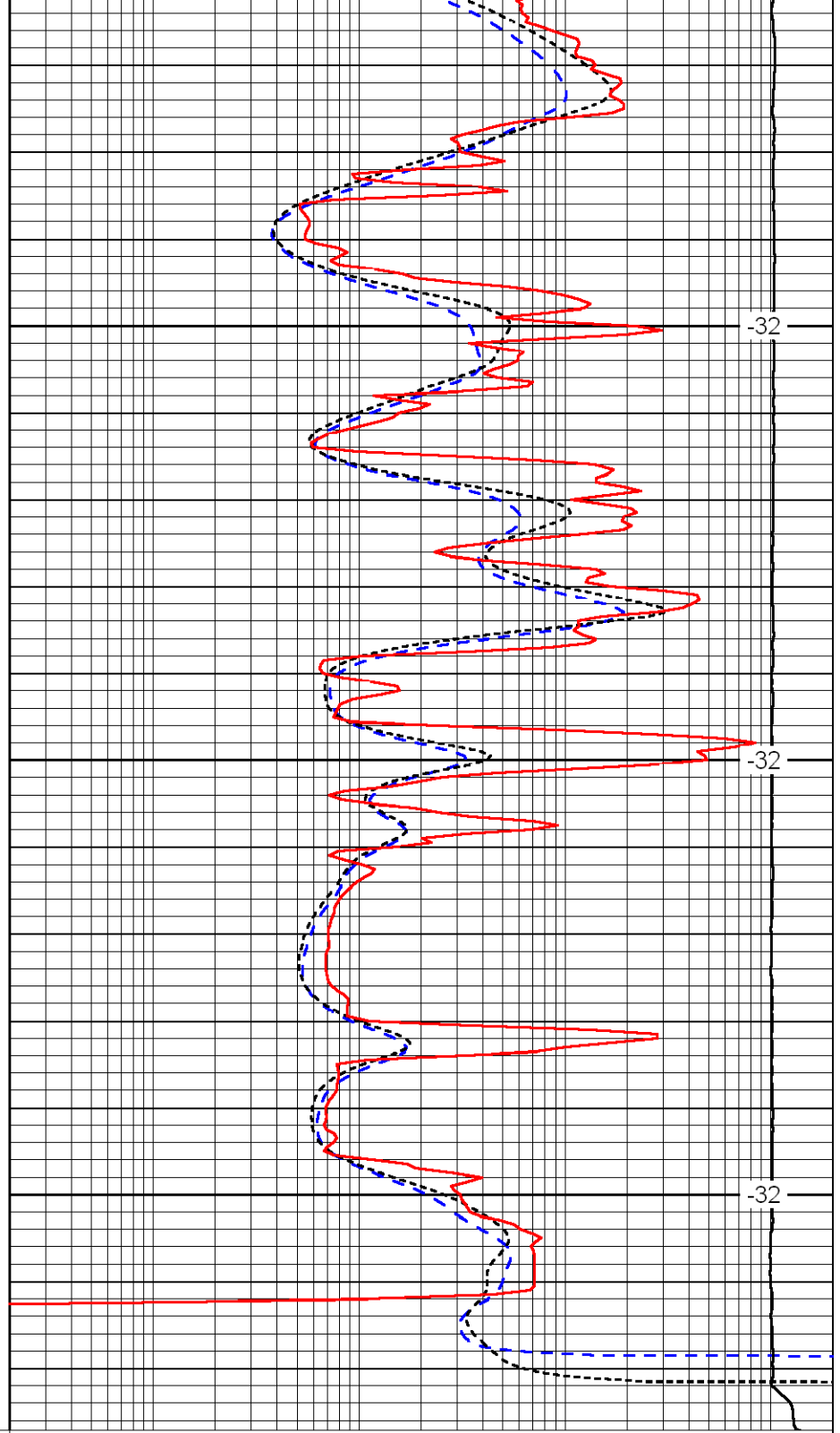


3600

3650

3700

0	Gamma Ray	150
-200	SP	0
-160	Rxo / Rt	40



-32

-32

-32

0.2	Deep Resistivity	2000
0.2	Medium Resistivity	2000
0.2	Shallow Resistivity	2000
15000	Line Tension	0

LSPD