



# Microresistivity Log

**DIGITAL LOG** (785) 625-3858

API No.	15-163-23,772-00-00		
Company	Bowman Oil Company		
Well	Lunney / Schuck SW No. 1		
Field	Solobow Southeast		
County	Rooks	State	Kansas
Location	1877' FSL & 558' FWL		
Sec: 31	Twp: 6S	Rge: 20W	Elevation CNL/CDL DIL
Permament Datum	Ground Level	Elevation 2231	K.B. 2236
Log Measured From	Kelly Bushing	5 Ft. Above Perm. Datum	D.F. 2231
Drilling Measured From	Kelly Bushing		G.L. 2231

Date	09/05/2009	
Run Number	Two	
Depth Driller	3720	
Depth Logger	3722	
Bottom Logged Interval	3721	
Top Log Interval	3100	
Casing Driller	8.625 @ 215	
Casing Logger	213	
Bit Size	7.875	
Type Fluid in Hole	Chemical	
Salinity, ppm CL	800	
Density / Viscosity	9.1	49
pH / Fluid Loss	11.5	8.8
Source of Sample	Flowline	
Rm @ Meas. Temp	1.2 @ 65	
Rmf @ Meas. Temp	.9 @ 65	
Rmc @ Meas. Temp	1.62 @ 65	
Source of Rmf / Rmc	Charts	
Rm @ BHT	.68 @ 115	
Operating Rig Time	3 Hours	
Max Rec. Temp. F	115	
Equipment Number	10	
Location	Hays	
Recorded By	Jason Wellbrock	
Witnessed By	Ed Glassman	

<<< Fold Here >>>

All interpretations are opinions based on inferences from electrical or other measurements and we cannot and do not guarantee the accuracy or correctness of any interpretation, and we shall not, except in the case of gross or willful negligence on our part, be liable or responsible for any loss, costs, damages, or expenses incurred or sustained by anyone resulting from any interpretation made by any of our officers, agents or employees. These interpretations are also subject to our general terms and conditions set out in our current Price Schedule.

### Comments

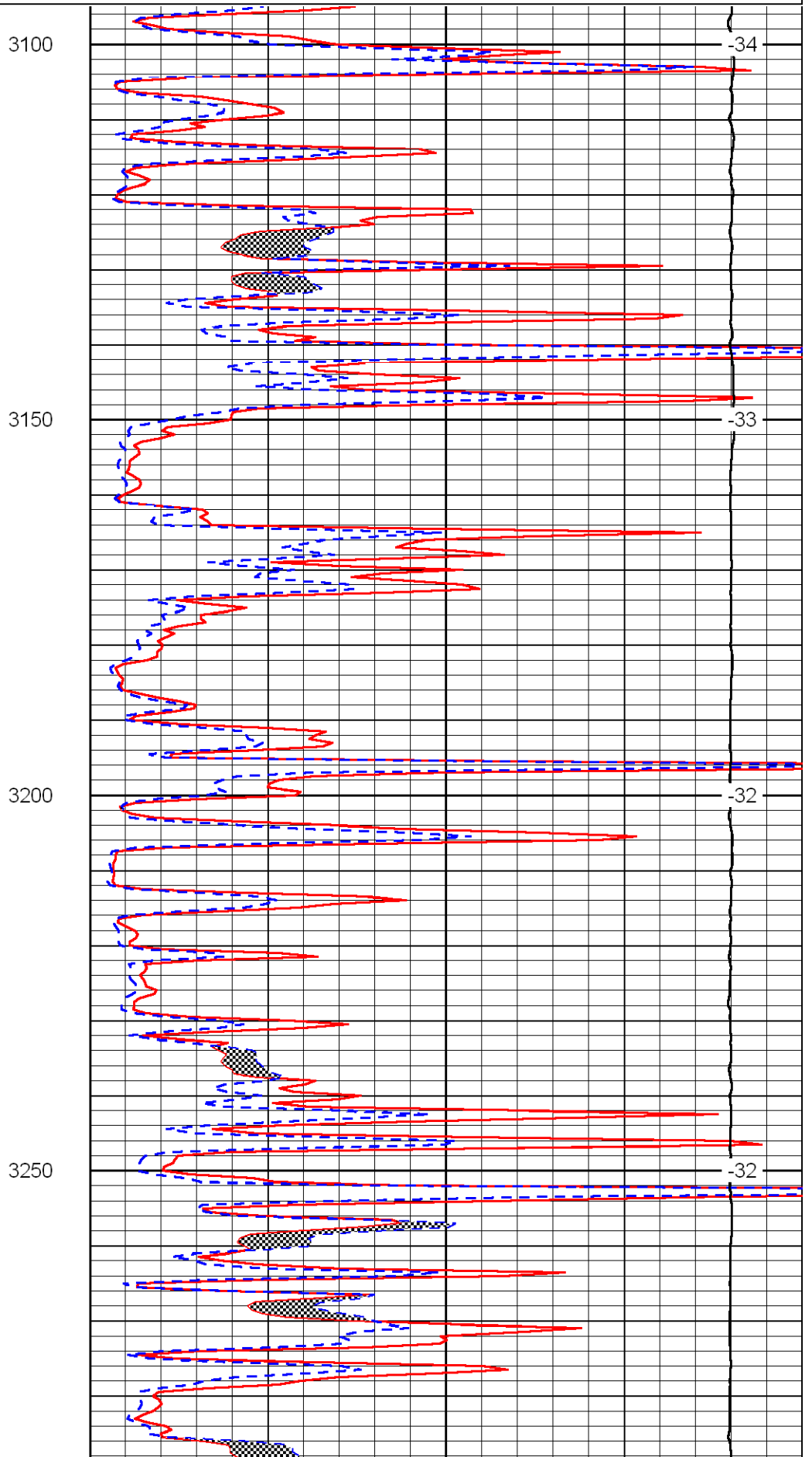
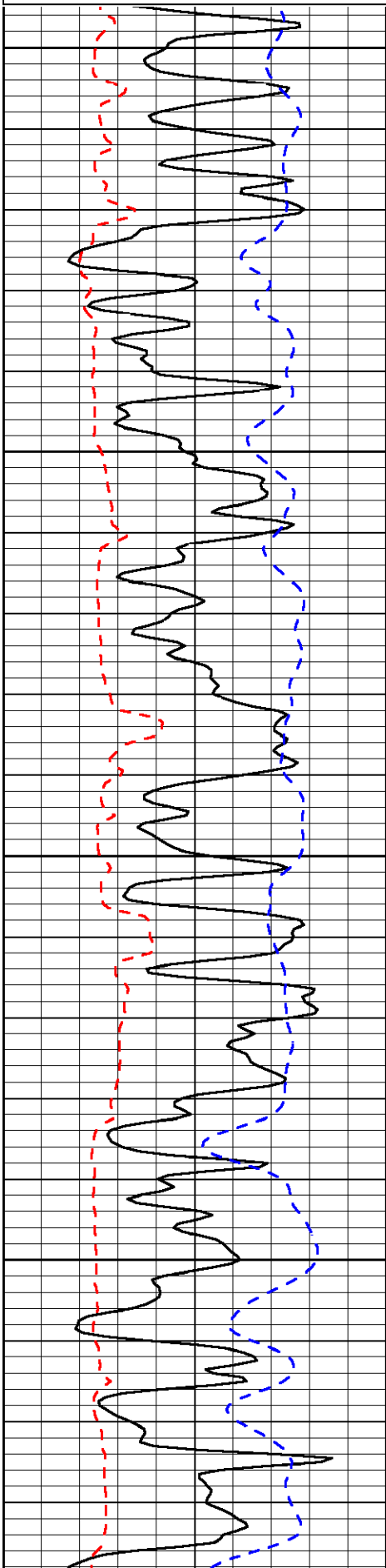
Thank you for using Log-Tech, Inc.  
(785) 625-3858

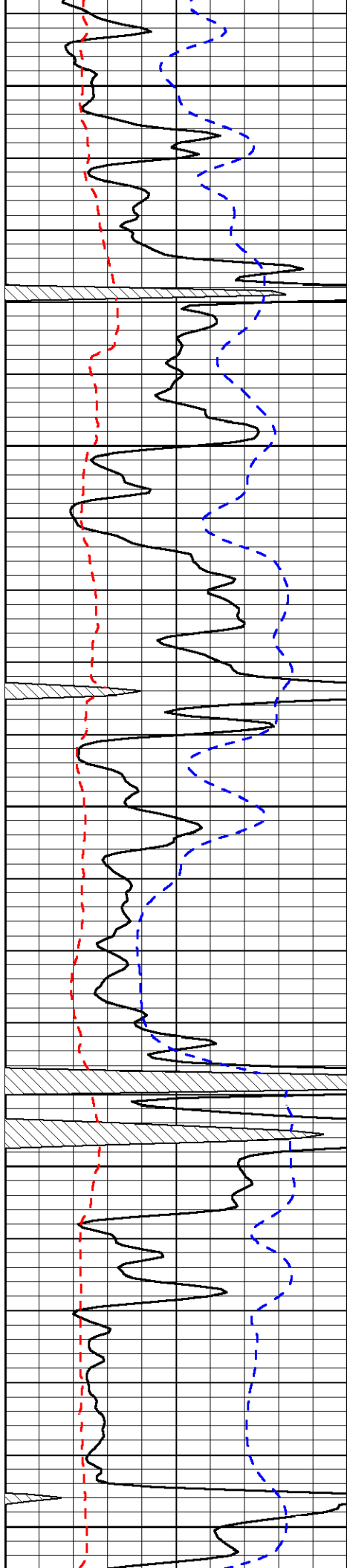
Damar Curve 11N, 1 W, 1/2 N, E Into

Database File:	bowmanhd.db
Dataset Pathname:	dil/bow2in
Presentation Format:	micro
Dataset Creation:	Sat Sep 05 09:27:07 2009
Charted by:	Depth in Feet scaled 1:240

0	Gamma Ray	150
6	Micro Log Caliper (GAPI)	16
2.875	mcal (GAPI)	7.875
-200	SP	0

0	Micro Inverse 1 X 1	40
0	Micro Normal 2"	40
10000	Line Weight	0
		LSPD





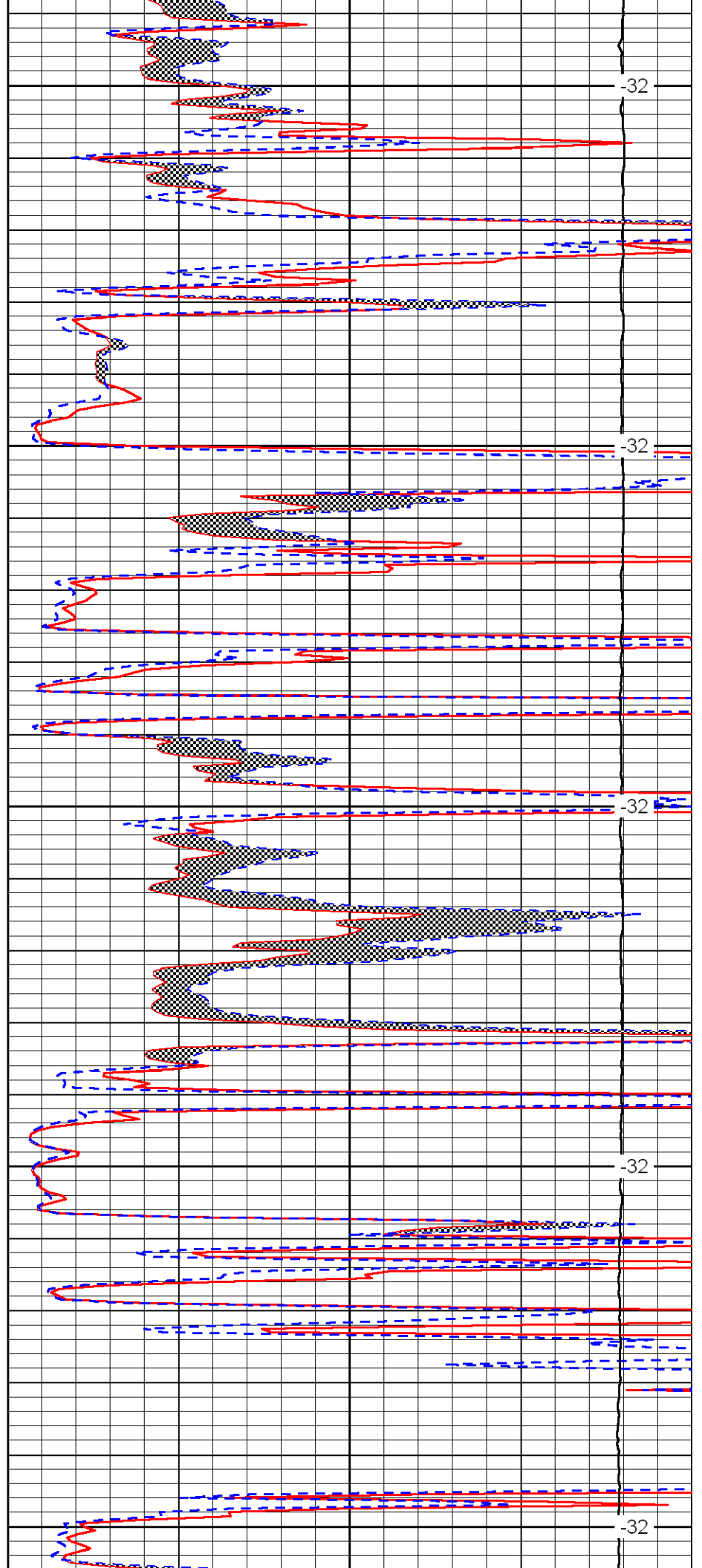
3300

3350

3400

3450

3500



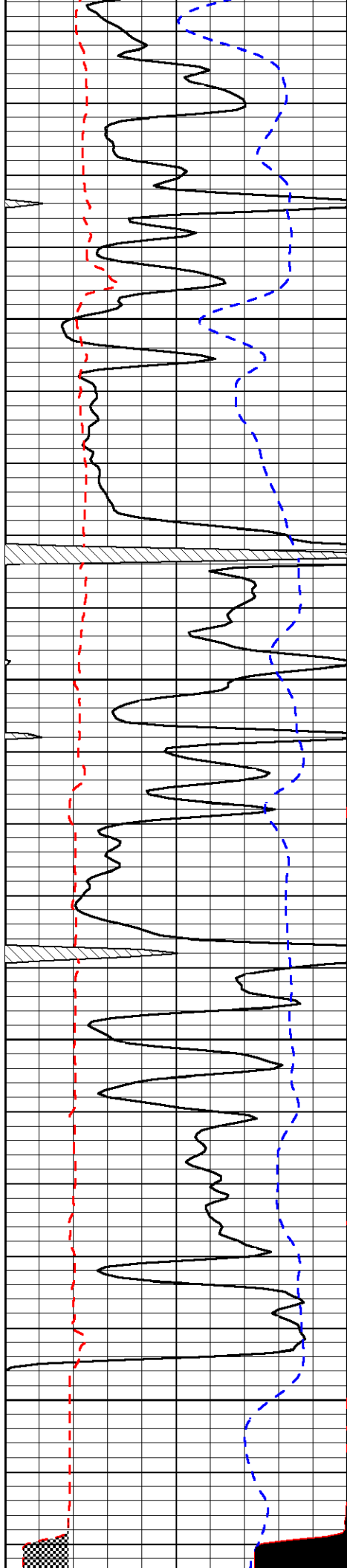
-32

-32

-32

-32

-32

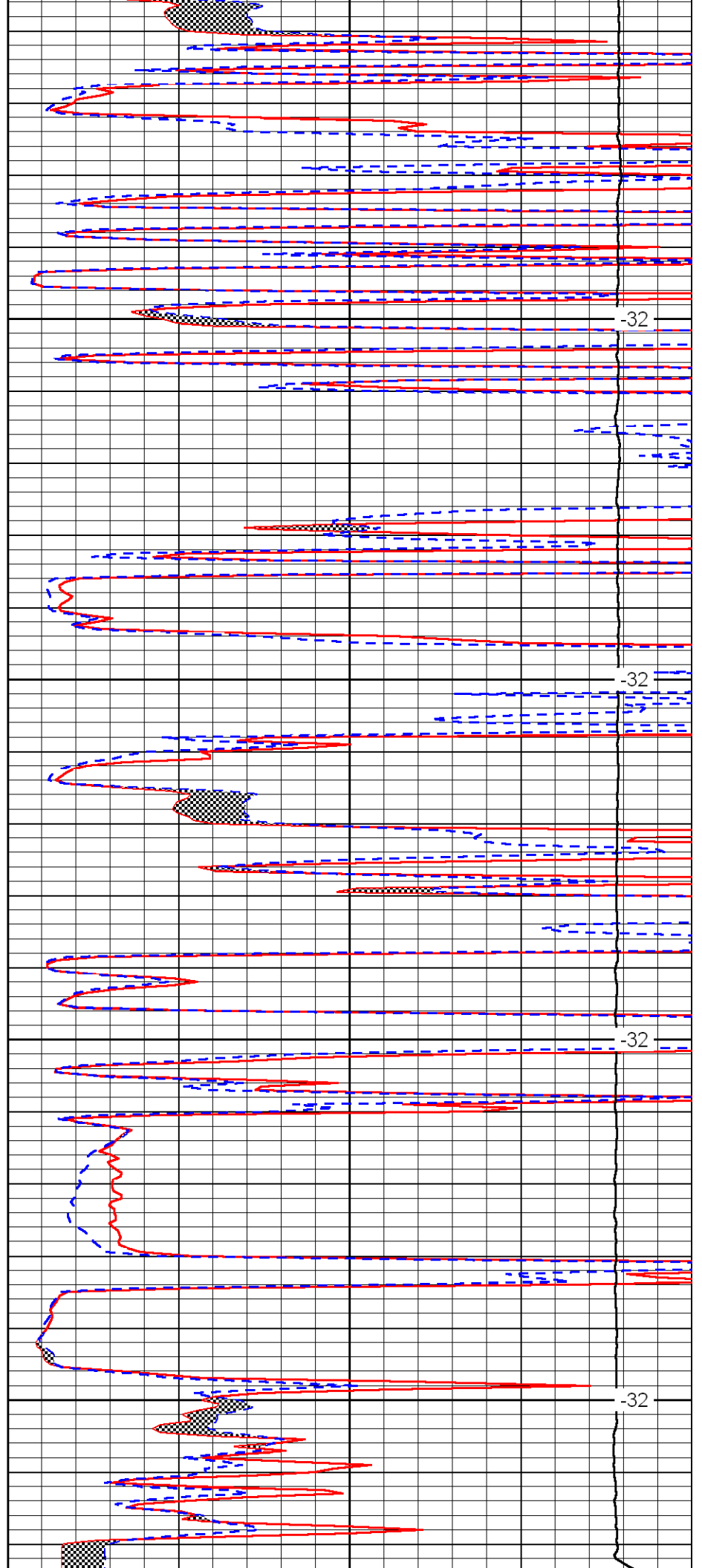


3550

3600

3650

3700



-32

-32

-32

-32

0	Gamma Ray	150
6	Micro Log Caliper (GAPI)	16
2.875	mcal (GAPI)	7.875
-200	SP	0

0	Micro Inverse 1 X 1	40
0	Micro Normal 2"	40
10000	Line Weight	0
		LSPD