



# Microresistivity Log

DIGITAL LOG (785) 625-3858

API No.	15-009-25,337-00-00	
Company	F G Holl Company, L.L.C	
Well	Romine No. 1-1	
Field	Clarence	
County	Barton	State Kansas
Location	1577' FSL & 833' FEL	
Sec: 1	Twp: 20S	Rge: 15W
Permanent Datum	Ground Level	Elevation 1952
Log Measured From	Kelly Bushing	8 Ft. Above Perm. Datum
Drilling Measured From	Kelly Bushing	
		Other Services CNL/CDL DIL/BHCS
		Elevation K.B. 1960 D.F. 1952 G.L. 1952

Date	09/01/2009
Run Number	Two
Depth Driller	3700
Depth Logger	3702
Bottom Logged Interval	3701
Top Log Interval	1700
Casing Driller	8.625 @ 865
Casing Logger	856
Bit Size	7.875
Type Fluid in Hole	Chemical
Salinity, ppm CL	6.800
Density / Viscosity	9.4 53
pH / Fluid Loss	10.0 NA
Source of Sample	Flowline
Rm @ Meas. Temp	.45 @ 75
Rmf @ Meas. Temp	.33 @ 75
Rmc @ Meas. Temp	.60 @ 75
Source of Rmf / Rmc	Charts
Rm @ BHT	.29 @ 115
Operating Rig Time	6 Hours
Max Rec. Temp. F	115
Equipment Number	10
Location	Hays
Recorded By	Jason Wellbrock
Witnessed By	Renea Husted

<<< Fold Here >>>

All interpretations are opinions based on inferences from electrical or other measurements and we cannot and do not guarantee the accuracy or correctness of any interpretation, and we shall not, except in the case of gross or willful negligence on our part, be liable or responsible for any loss, costs, damages, or expenses incurred or sustained by anyone resulting from any interpretation made by any of our officers, agents or employees. These interpretations are also subject to our general terms and conditions set out in our current Price Schedule.

### Comments

Thank you for using Log-Tech, Inc.  
(785) 625-3858

Heizer S to Stop Sign, W 2, 2 S, 1/2 W, N Into



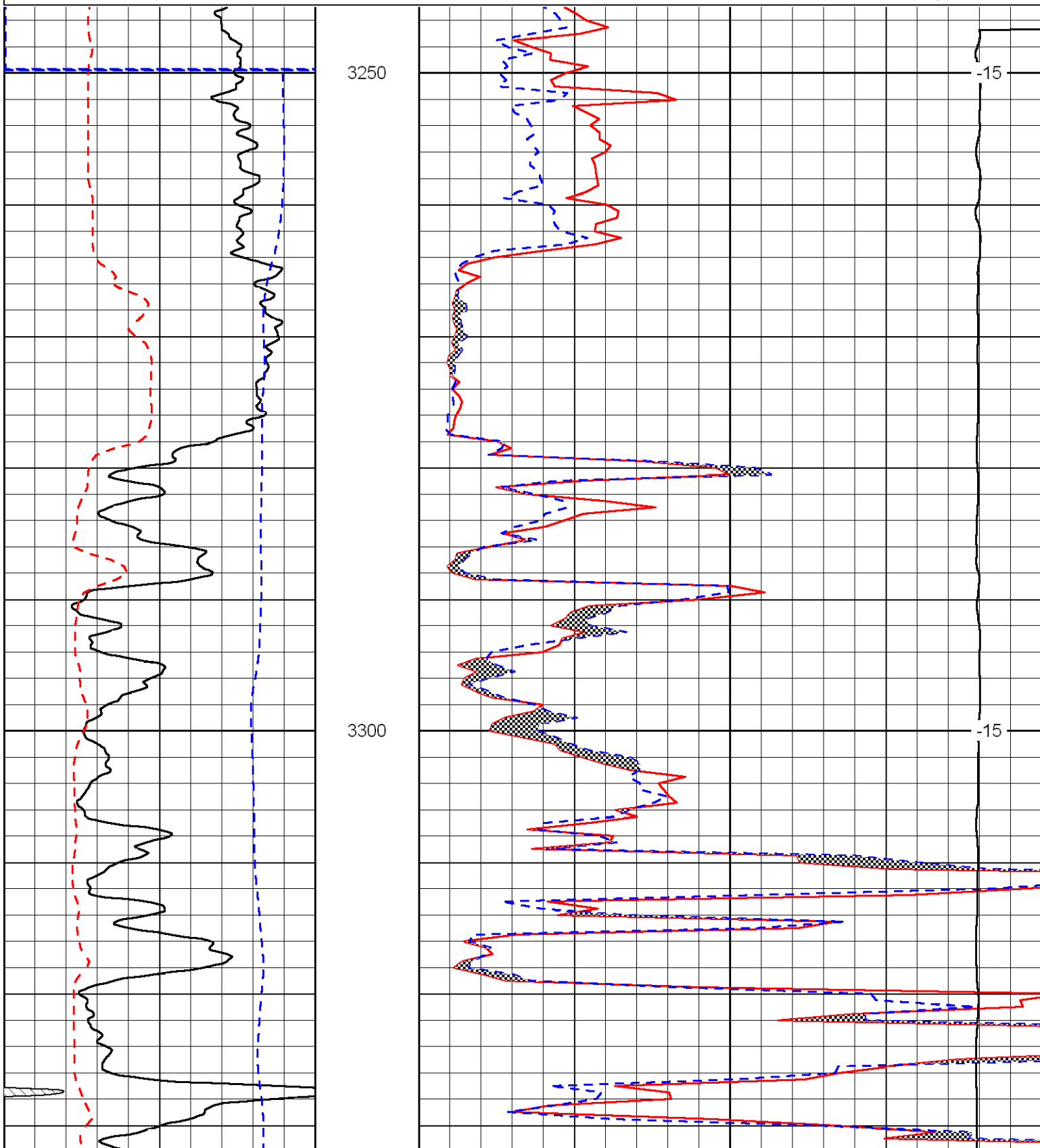
# High Resolution

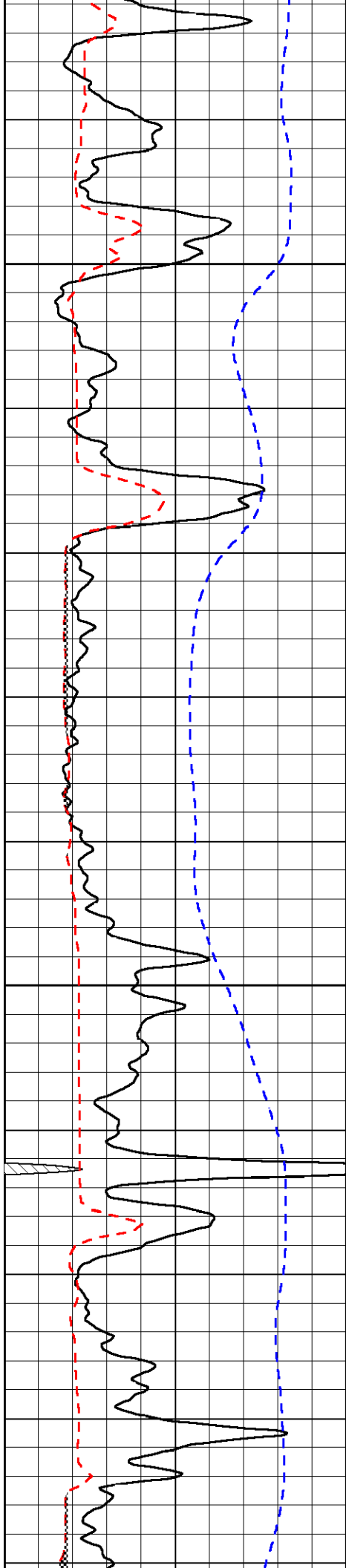
Database File: c:\warrior\data\fg holl\_romine no. 1-1\fghollhd2.db  
 Dataset Pathname: dil/highres  
 Presentation Format: micro  
 Dataset Creation: Tue Sep 01 23:02:28 2009  
 Charted by: Depth in Feet scaled 1:120

0	Gamma Ray	150
6	Micro Log Caliper (in)	16
-200	SP (MV)	0

0	Micro Inverse 1 X 1 (Ohm-m)	40
0	Micro Normal 2' (Ohm-m)	40
10000	Line Weight (lb)	0

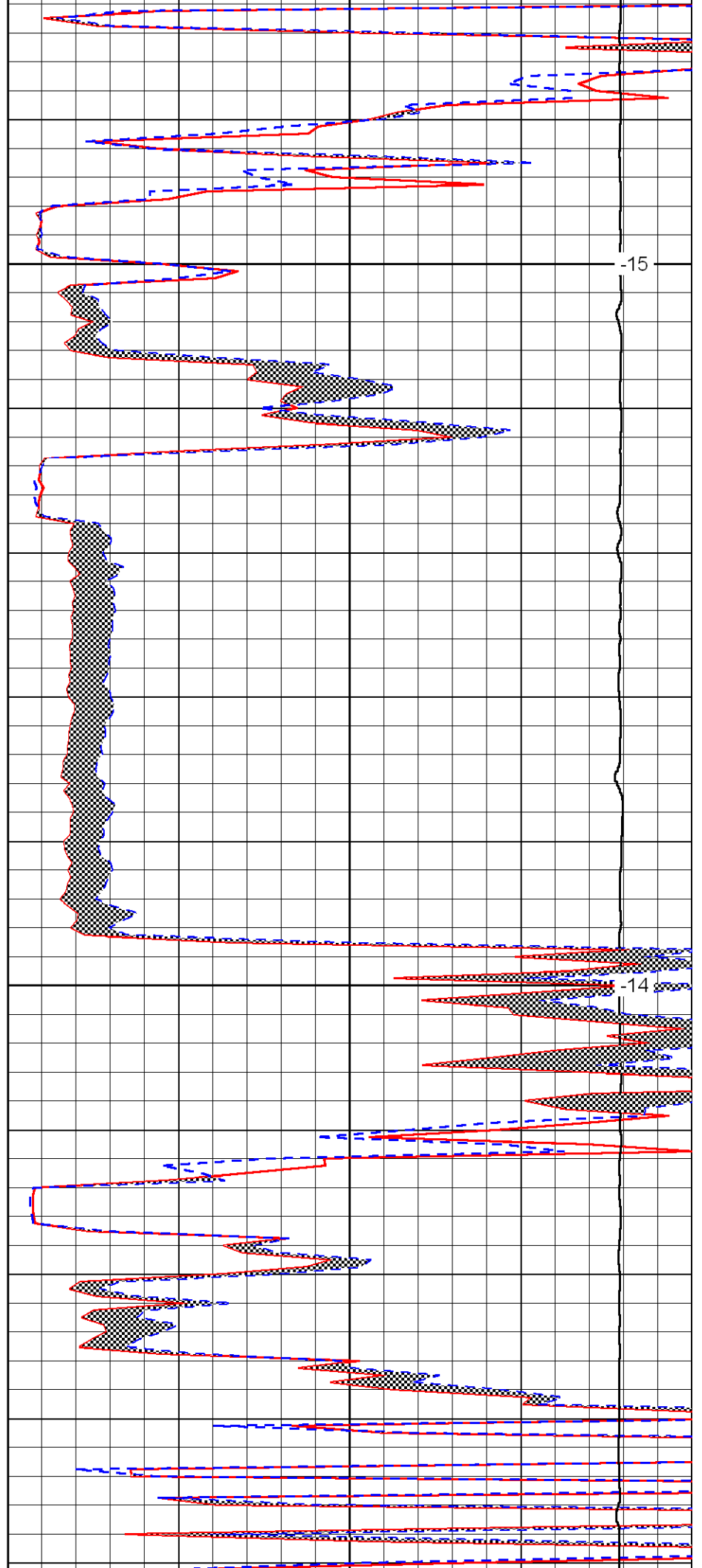
LSPD  
(ft/min)





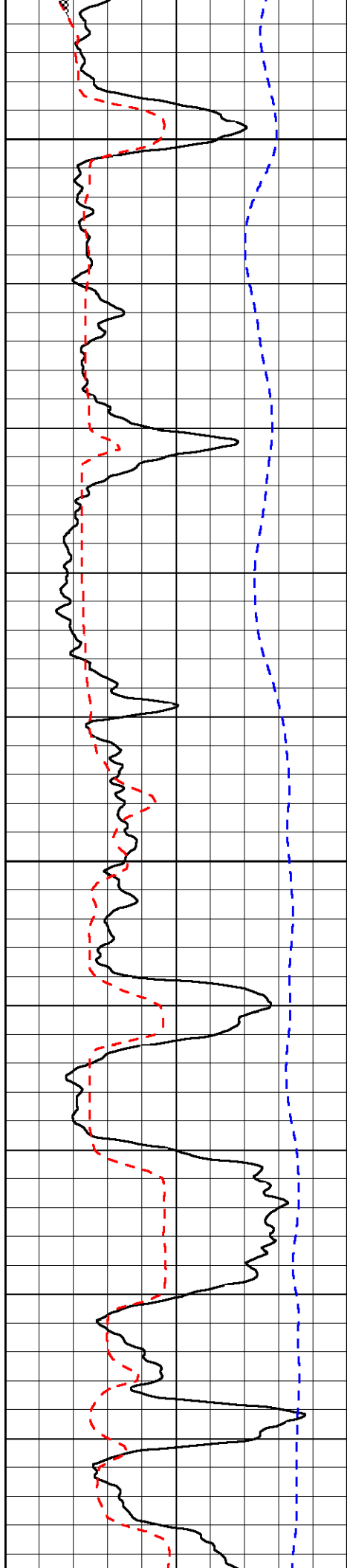
3350

3400



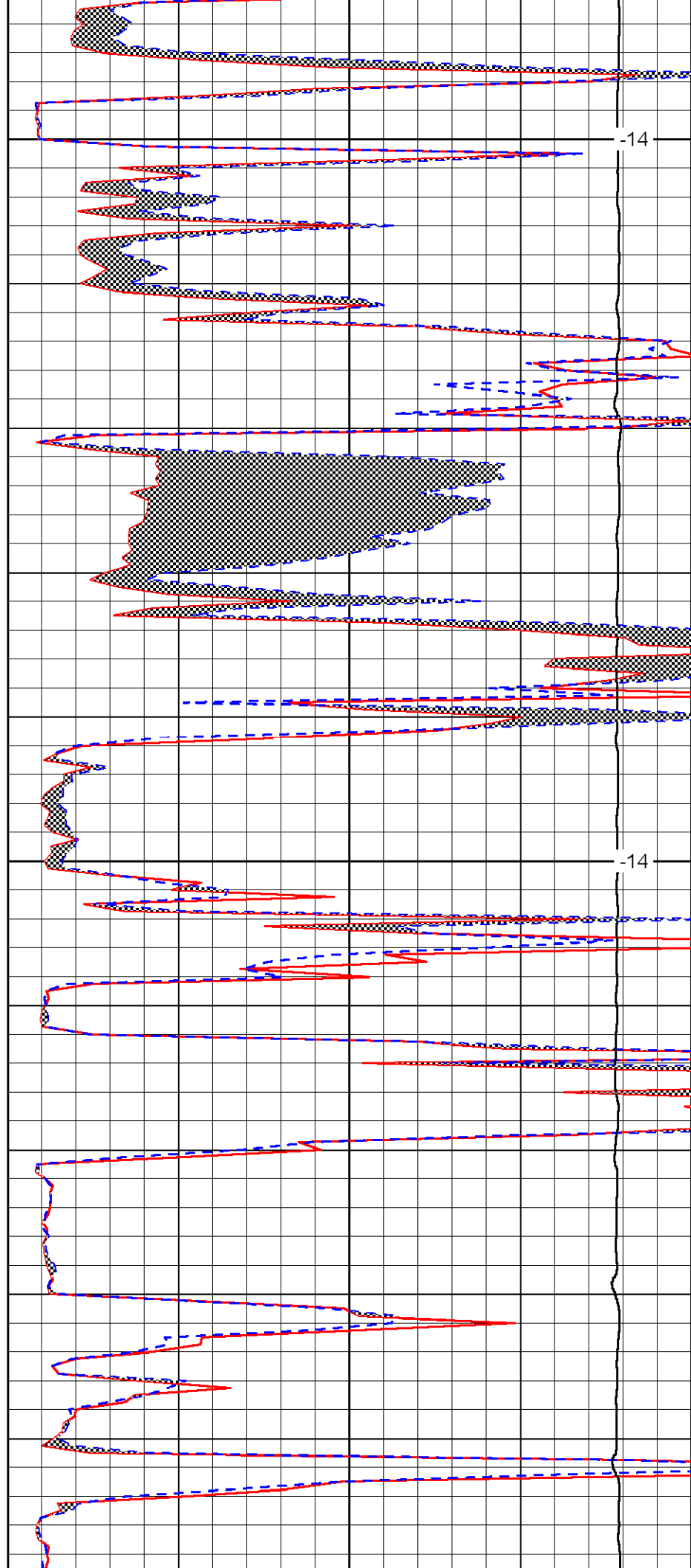
-15

-14



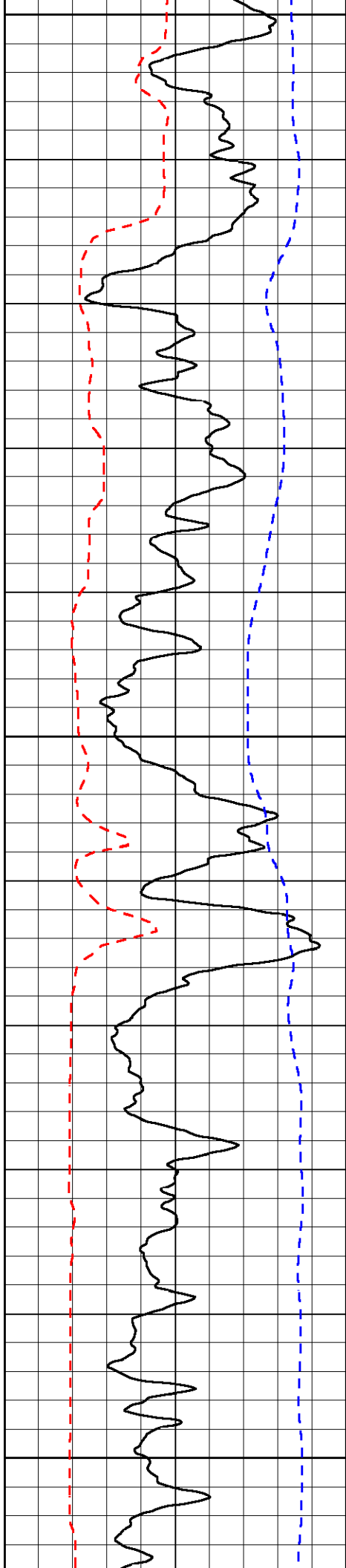
3450

3500



-14

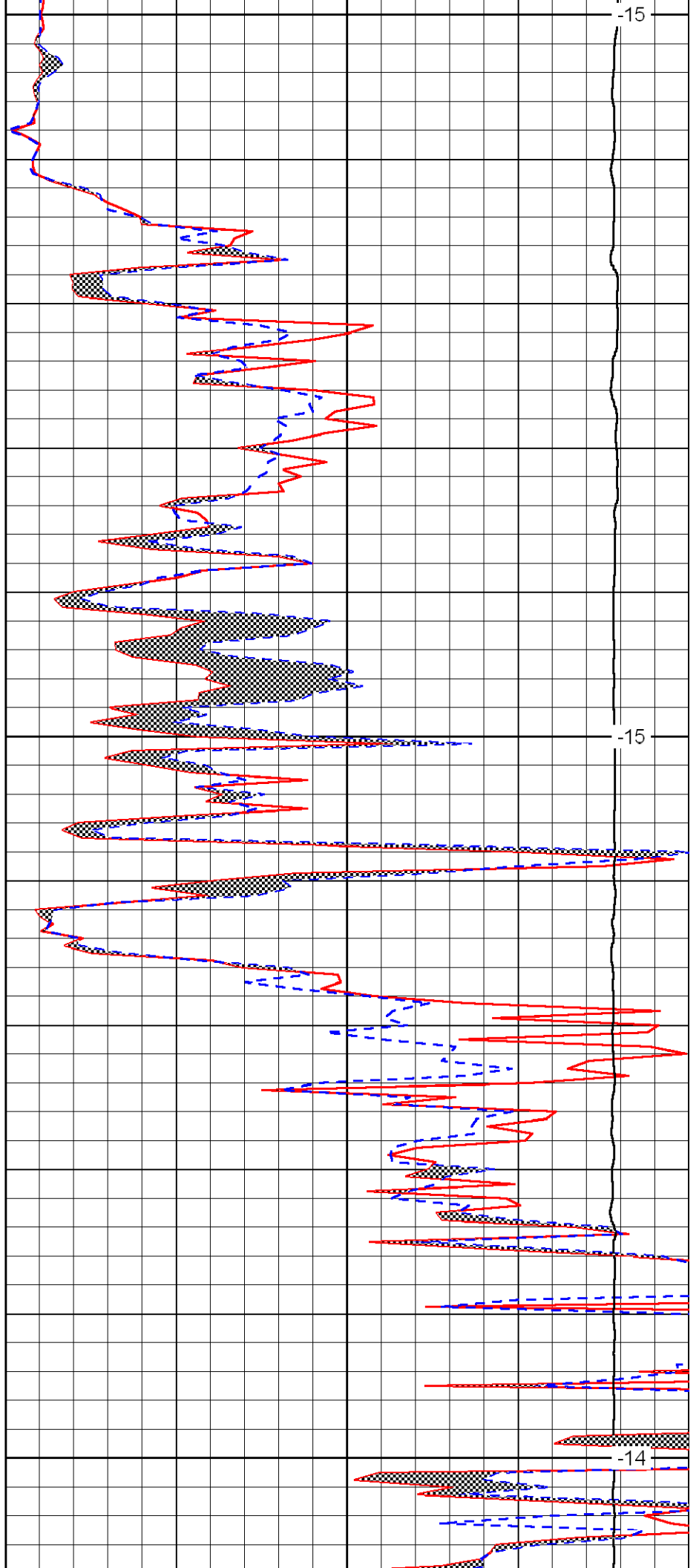
-14



3550

3600

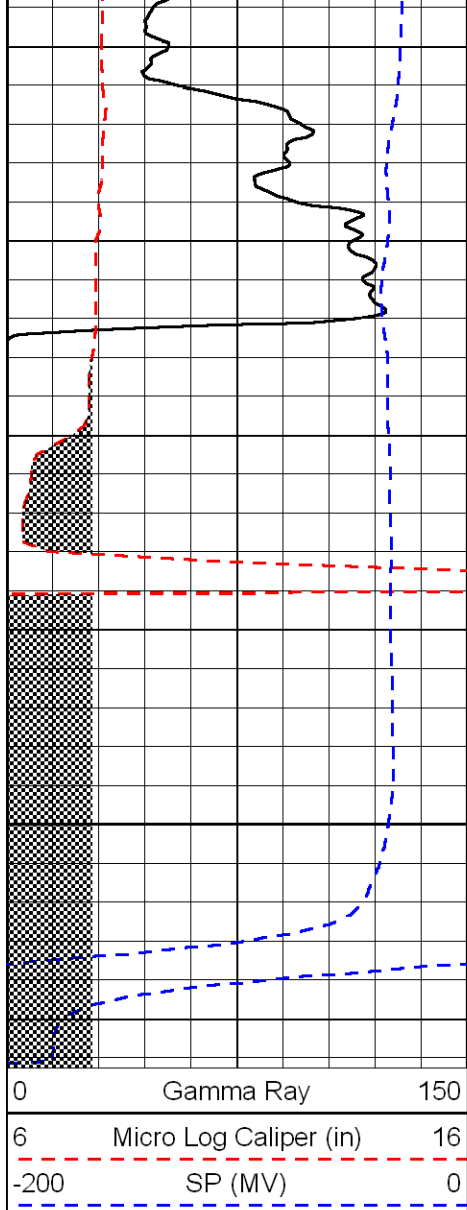
3650



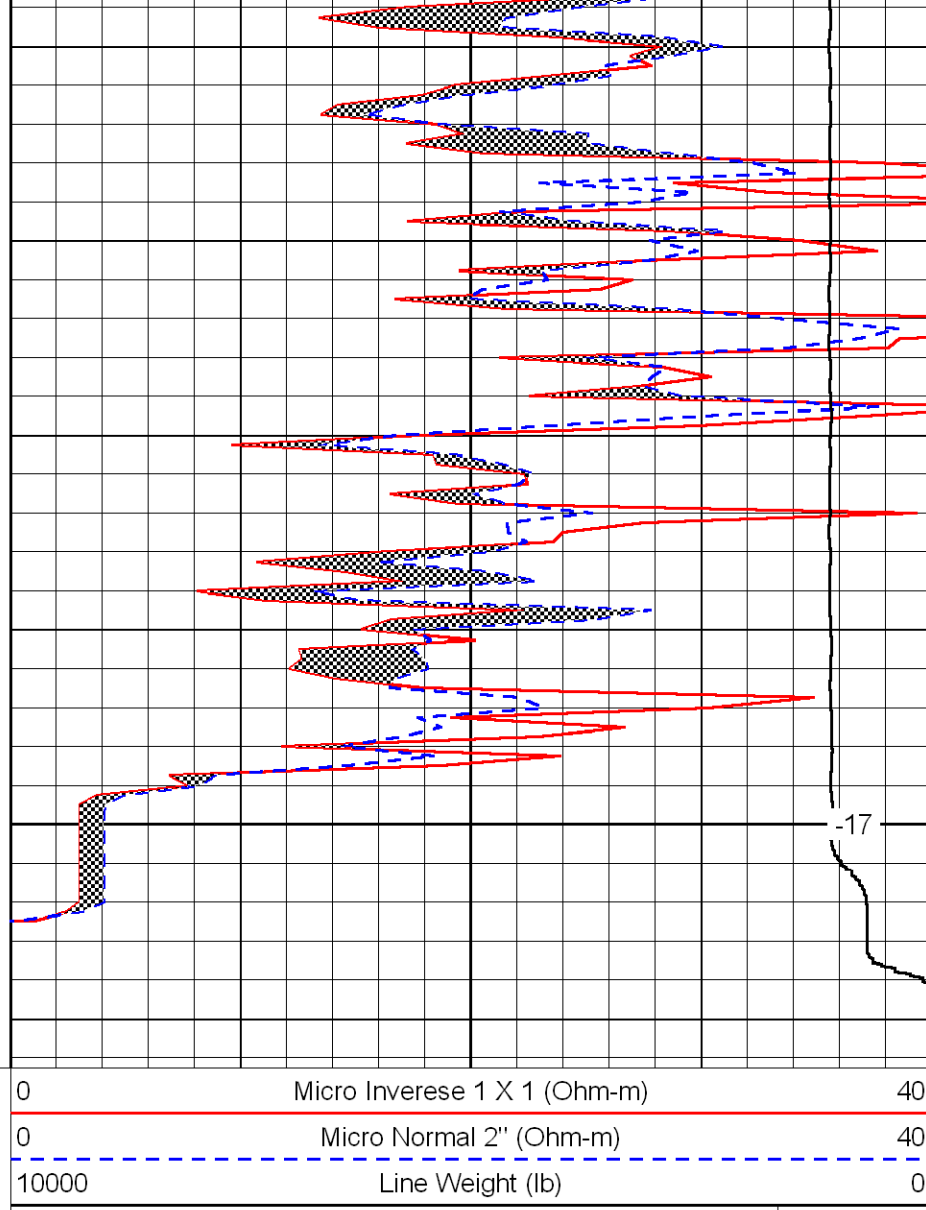
-15

-15

-14



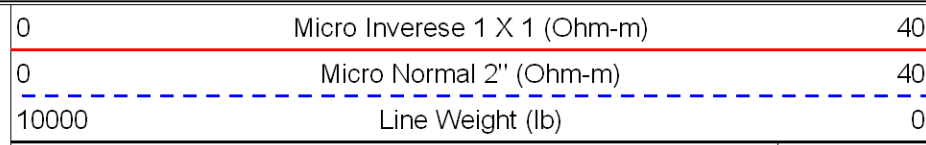
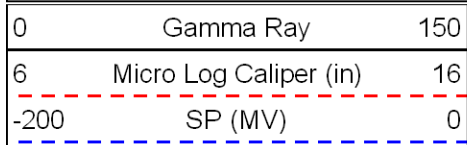
3700



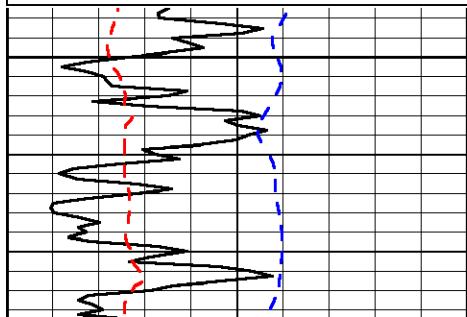
-17

LSPD  
(ft/min)

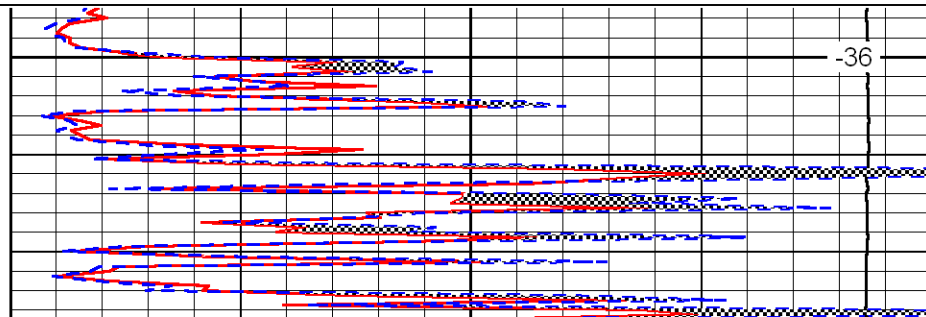
Database File: c:\warrior\data\fg holl\_romine no. 1-1\fghollhd2.db  
 Dataset Pathname: dil/fg2in  
 Presentation Format: micro  
 Dataset Creation: Tue Sep 01 23:02:22 2009  
 Charted by: Depth in Feet scaled 1:240



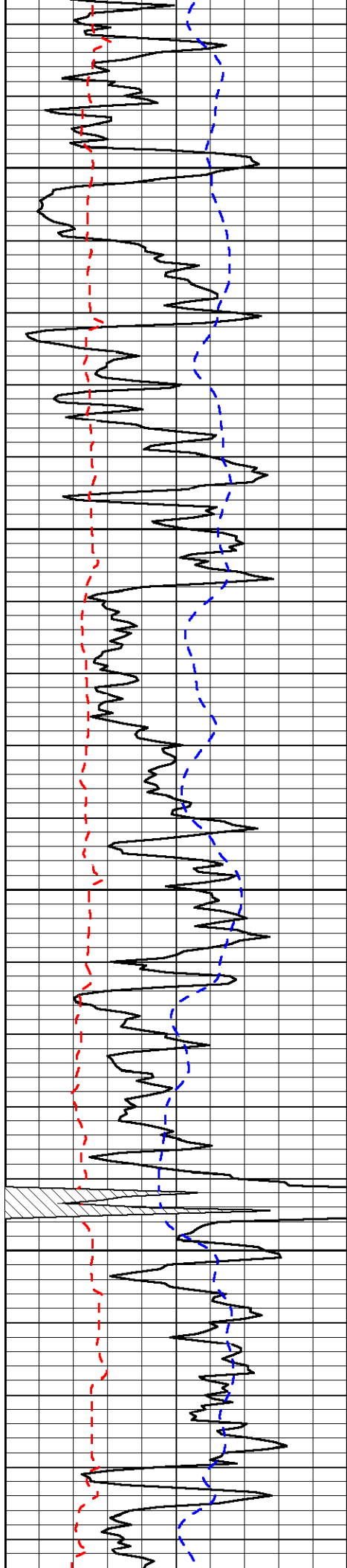
LSPD  
(ft/min)



1700



-36

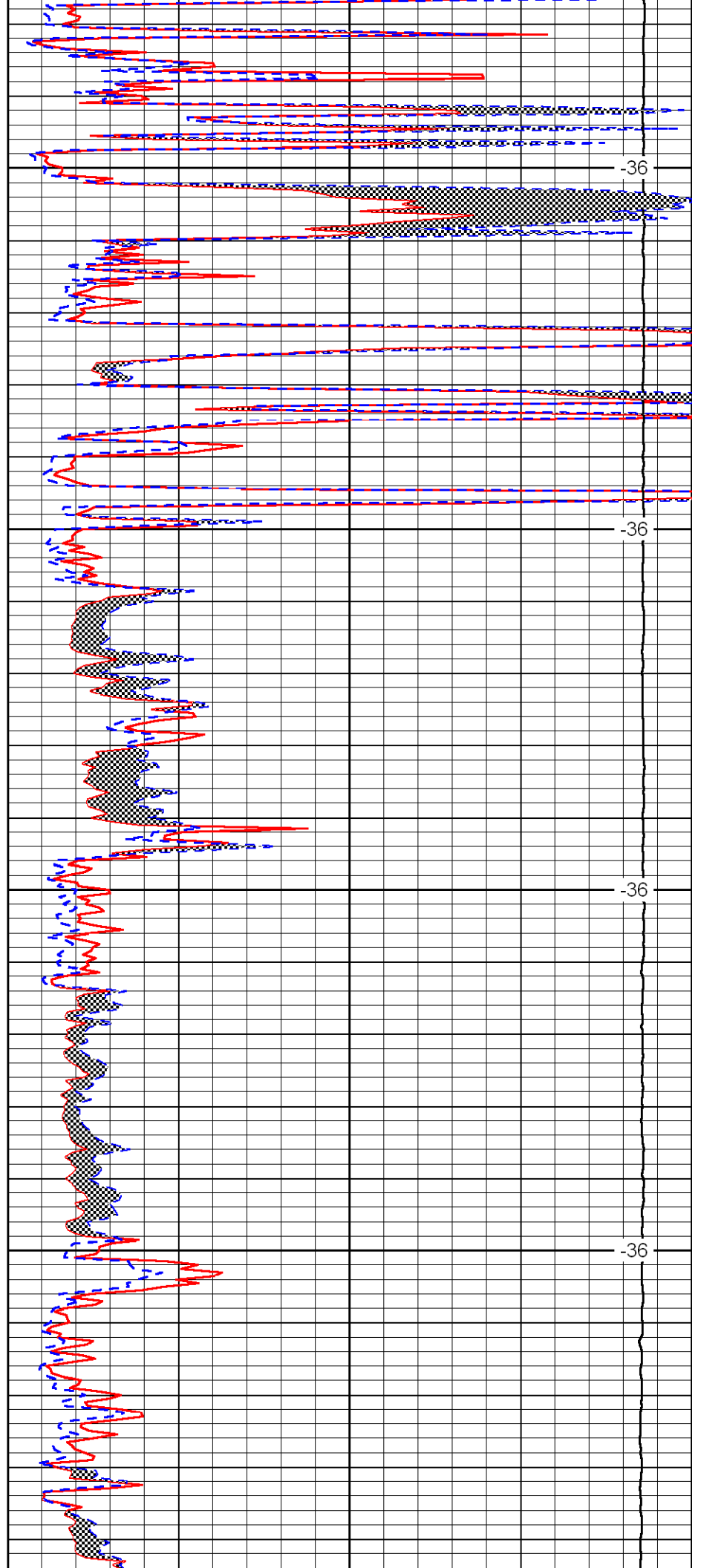


1750

1800

1850

1900

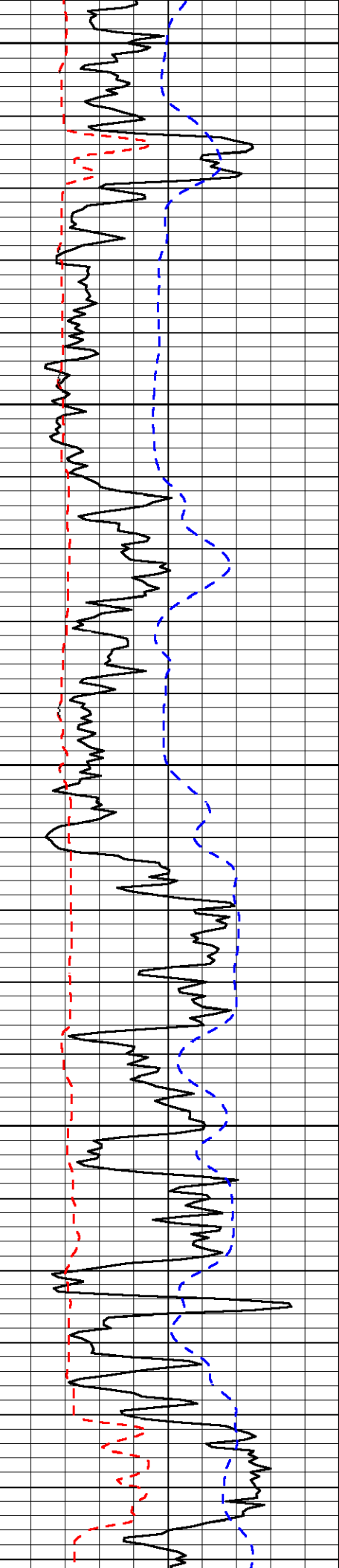


-36

-36

-36

-36



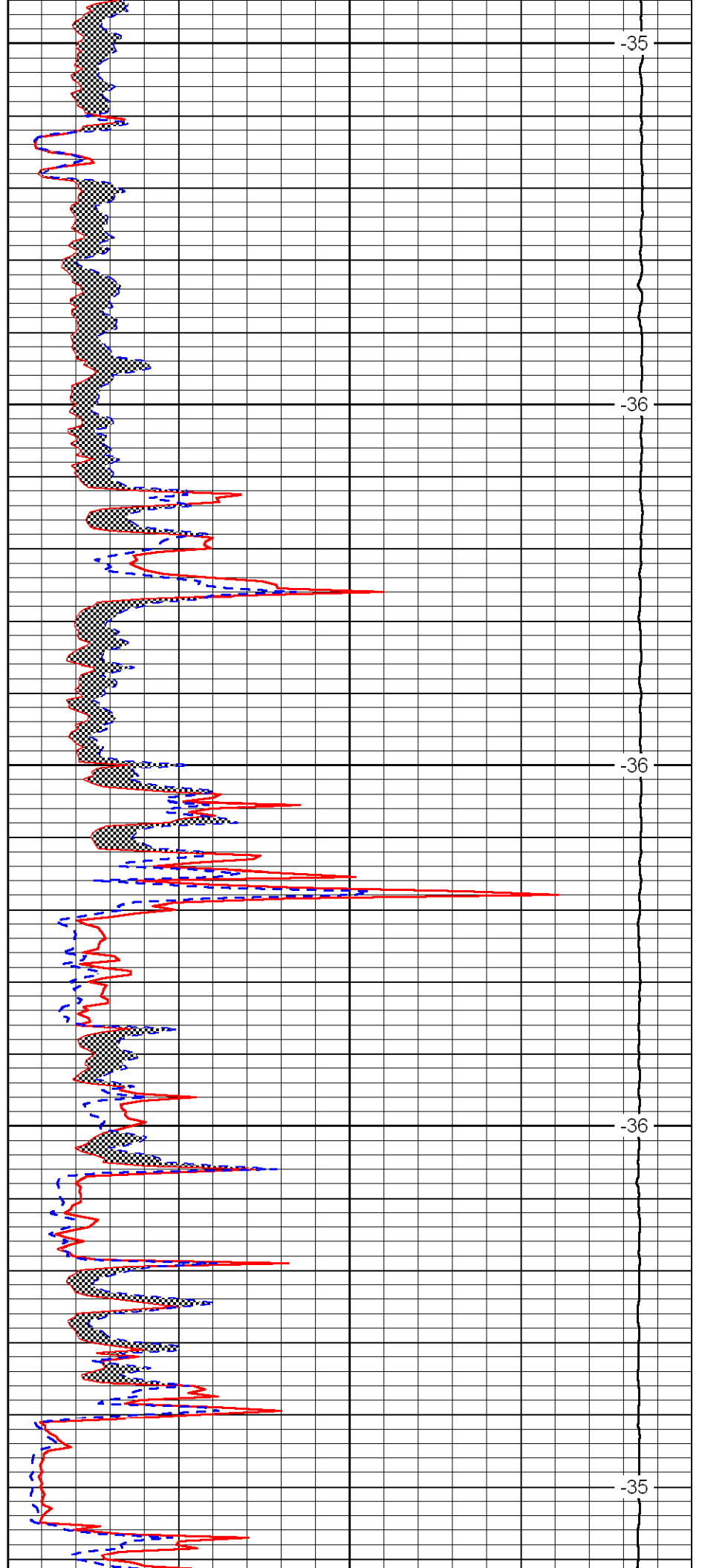
1950

2000

2050

2100

2150



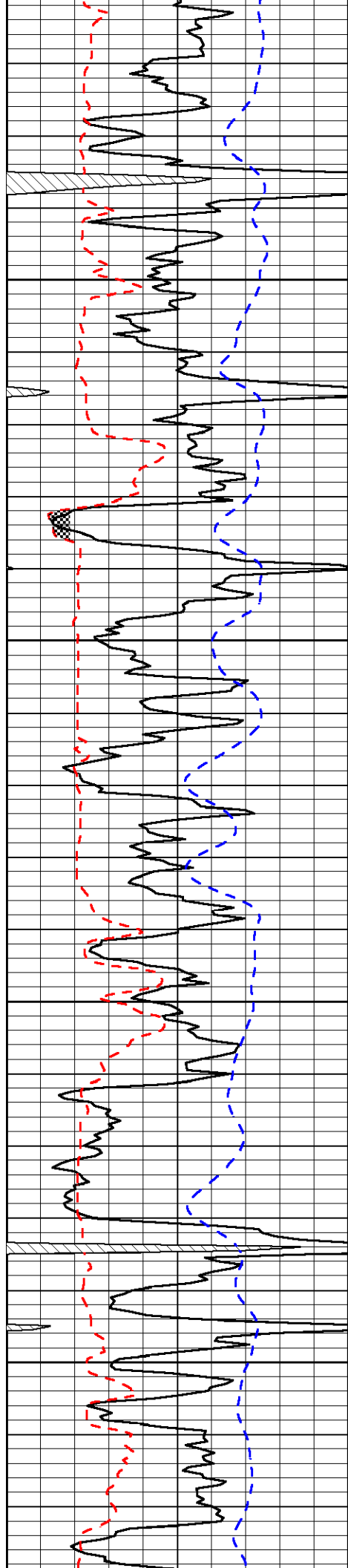
-35

-36

-36

-36

-35

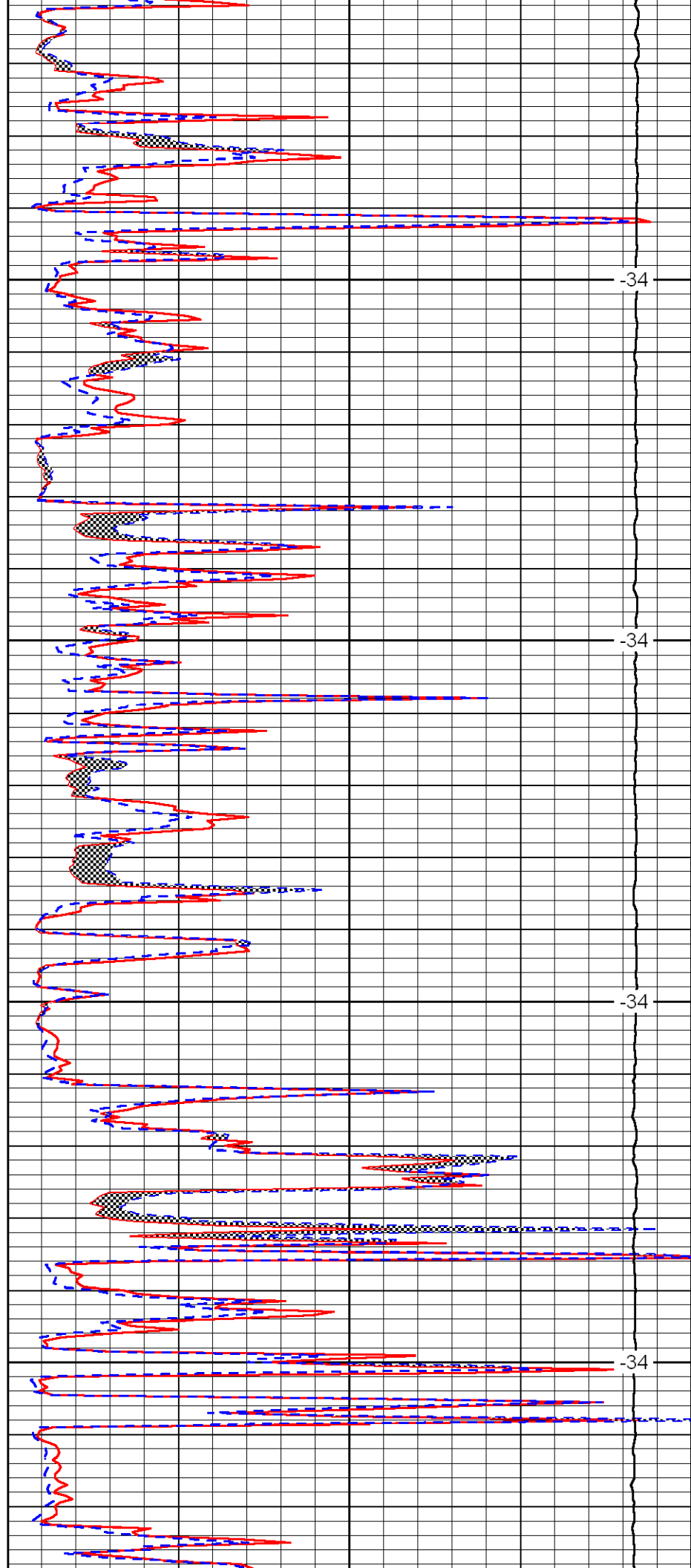


2200

2250

2300

2350

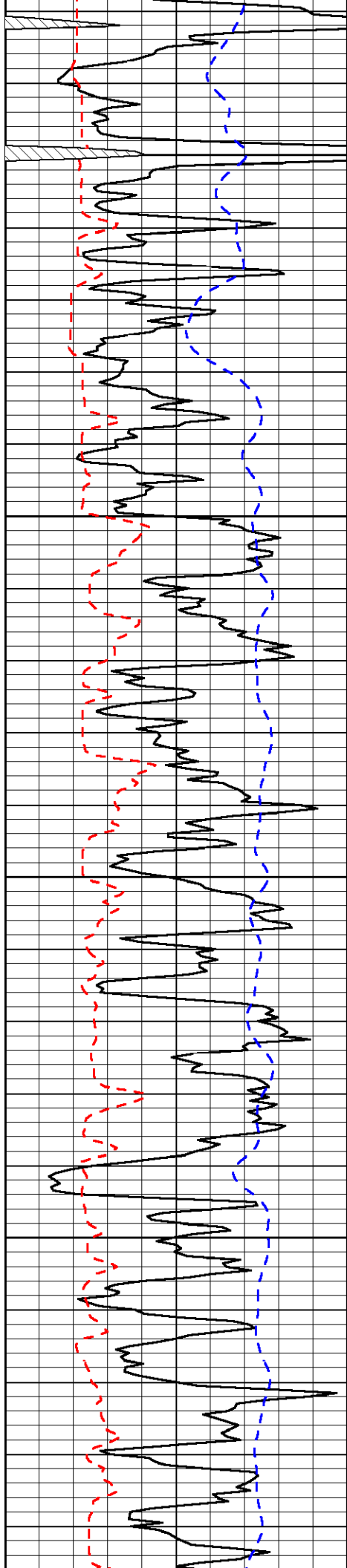


-34

-34

-34

-34

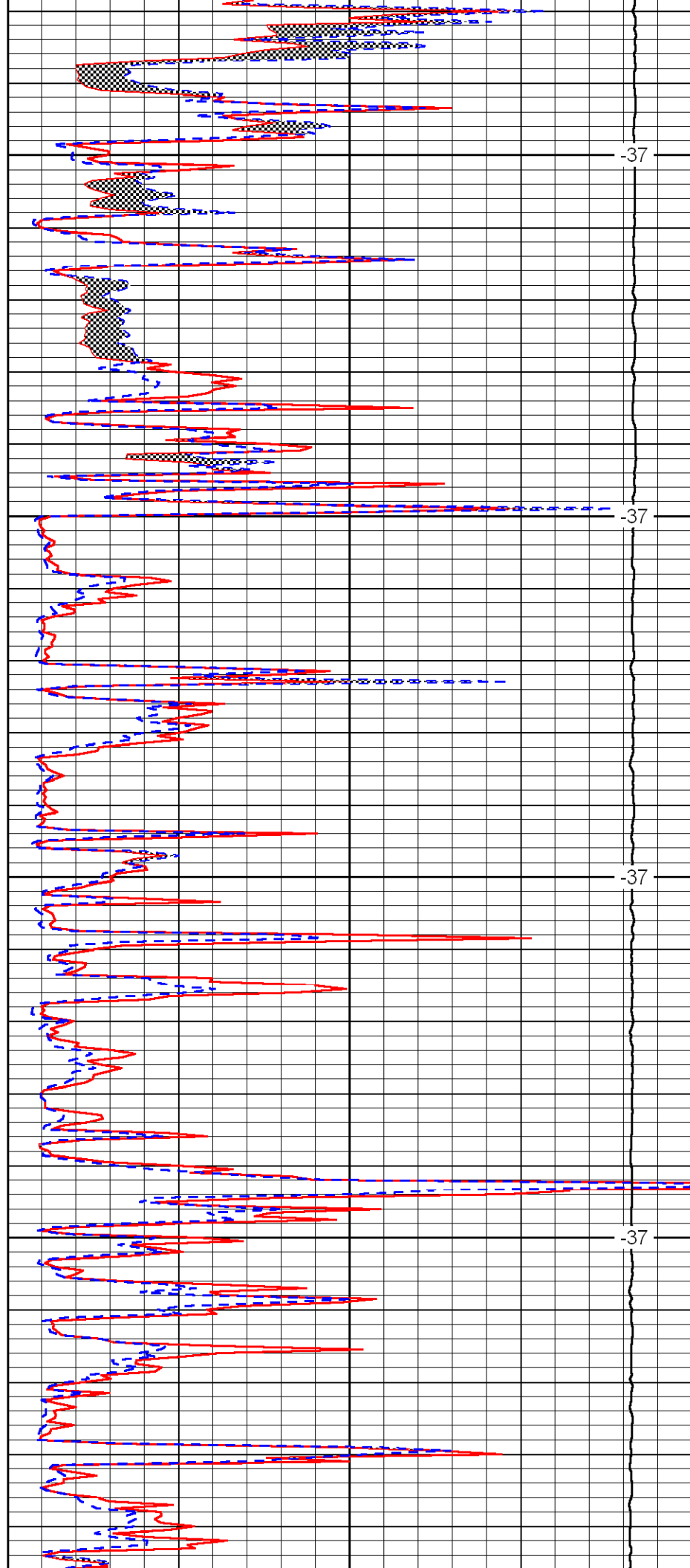


2400

2450

2500

2550

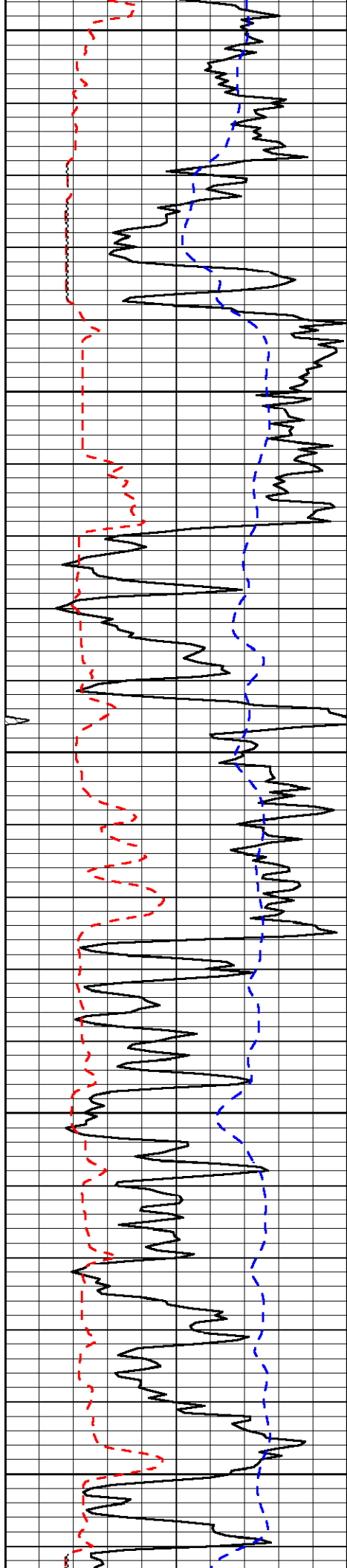


-37

-37

-37

-37



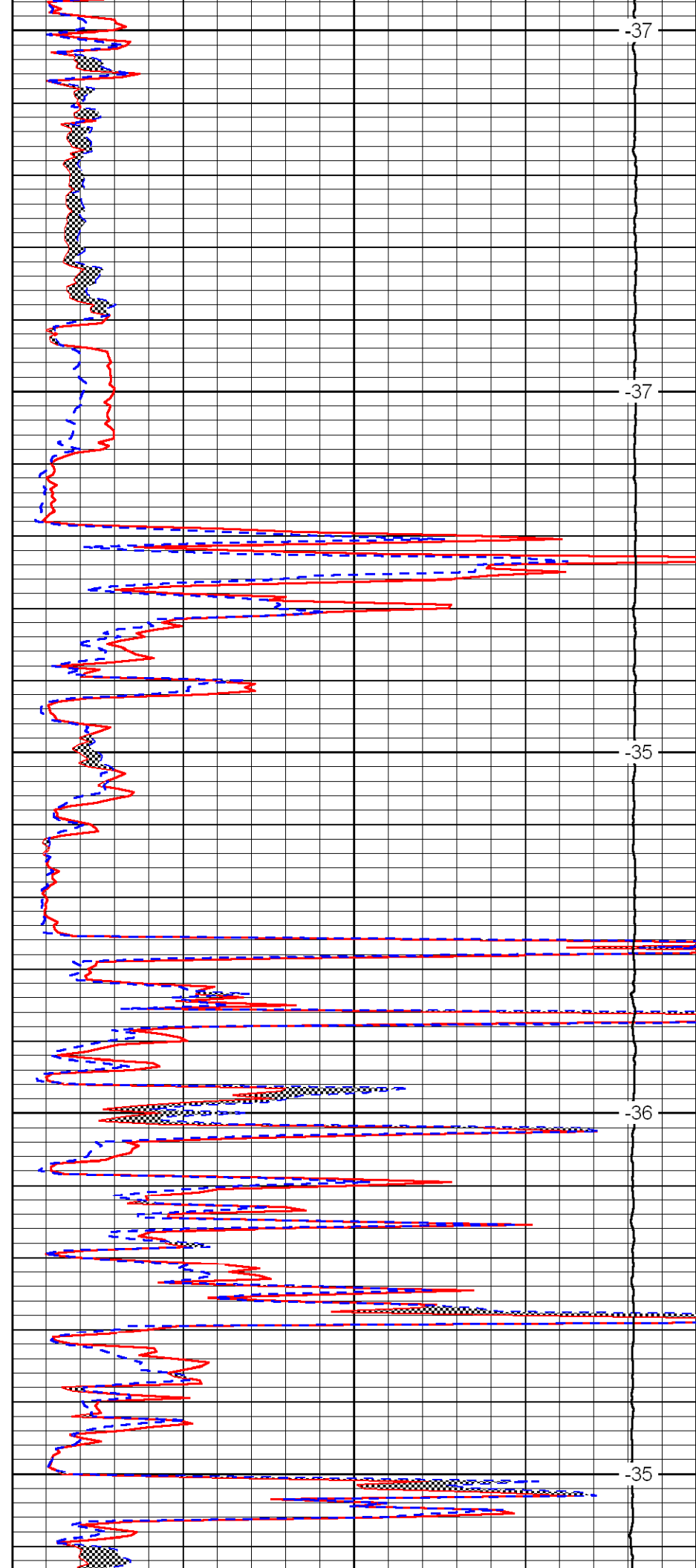
2600

2650

2700

2750

2800



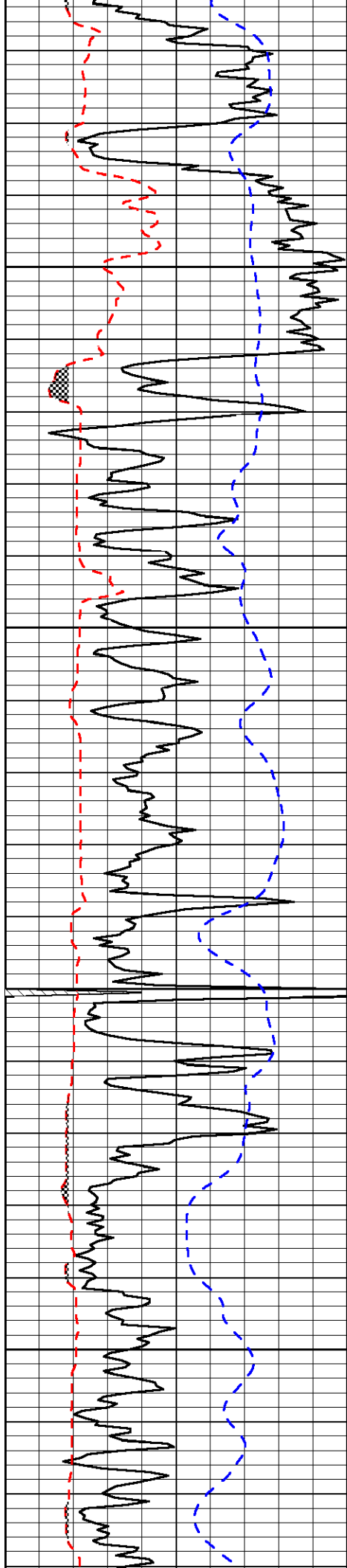
-37

-37

-35

-36

-35

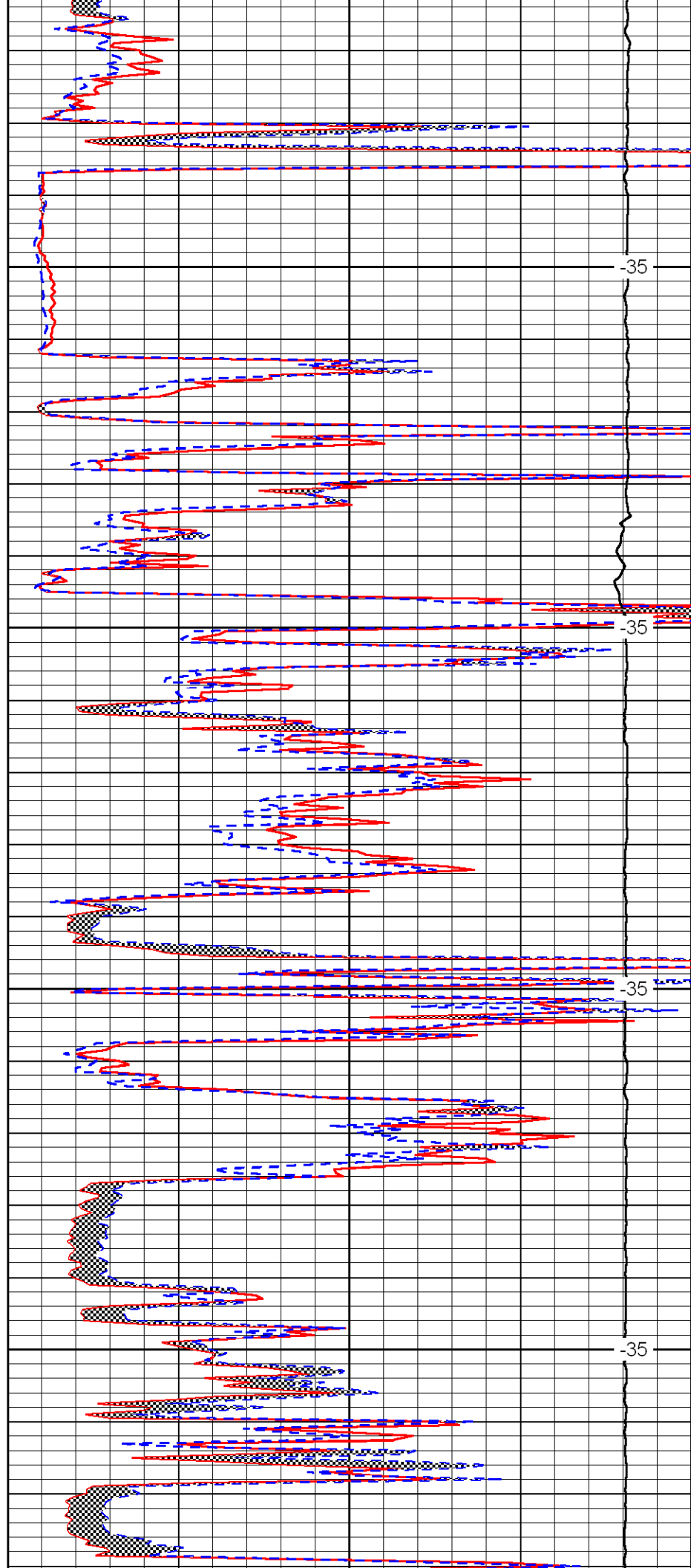


2850

2900

2950

3000

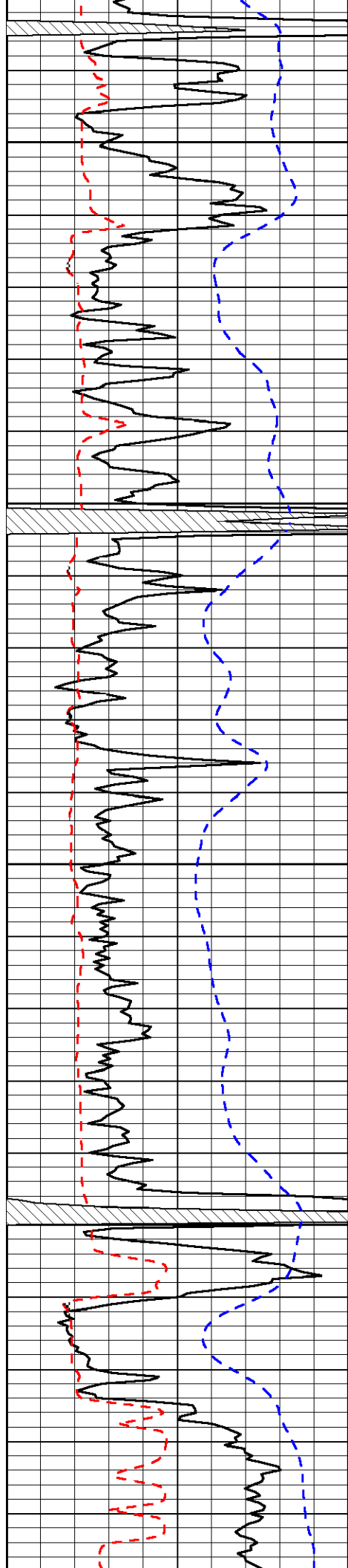


-35

-35

-35

-35

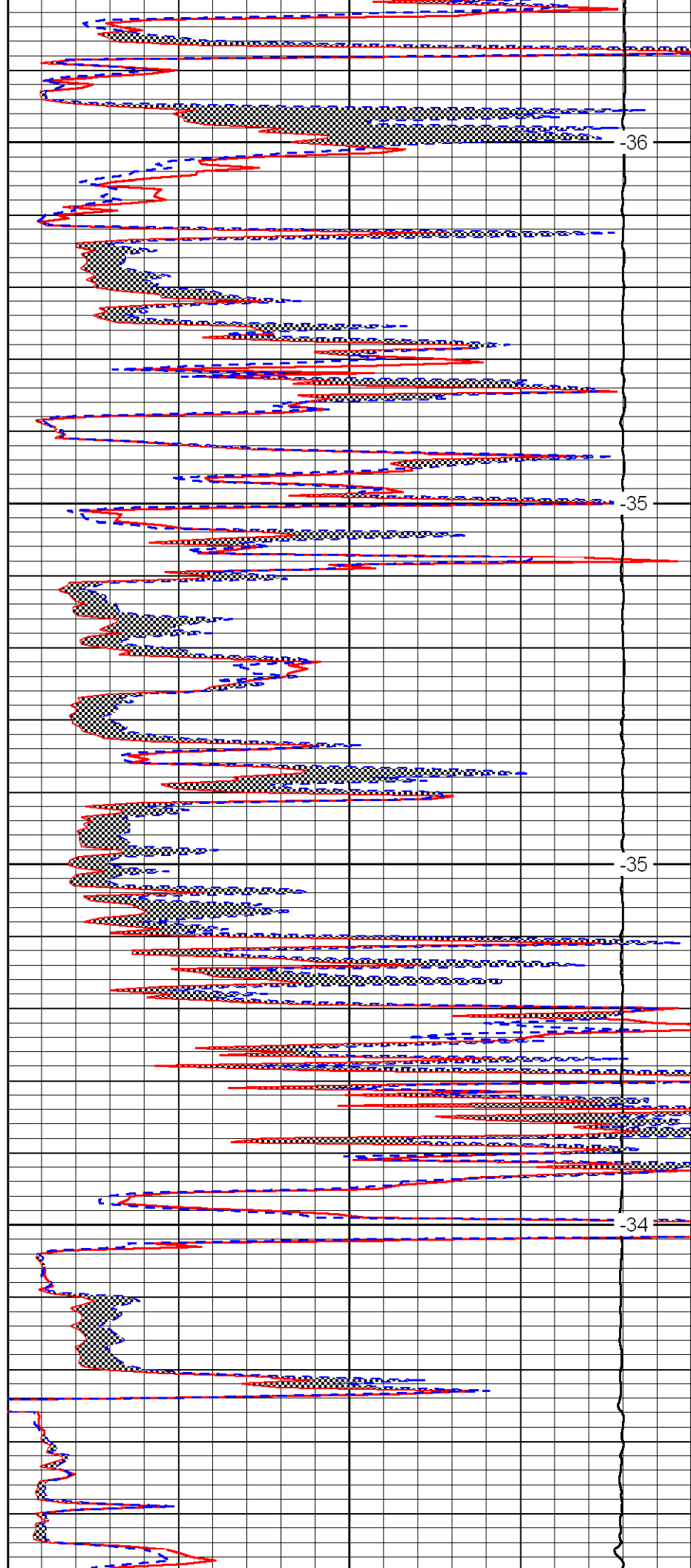


3050

3100

3150

3200

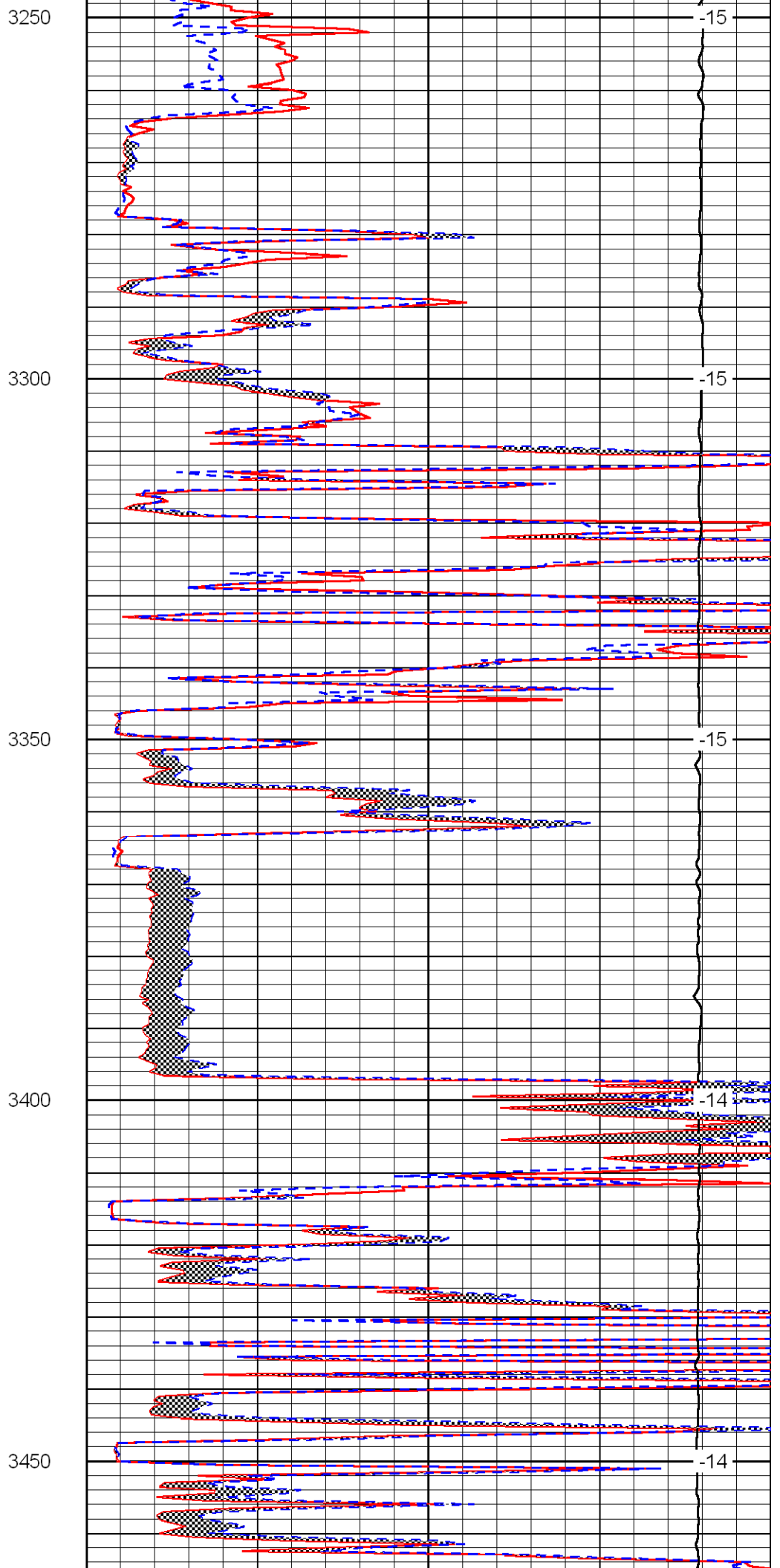
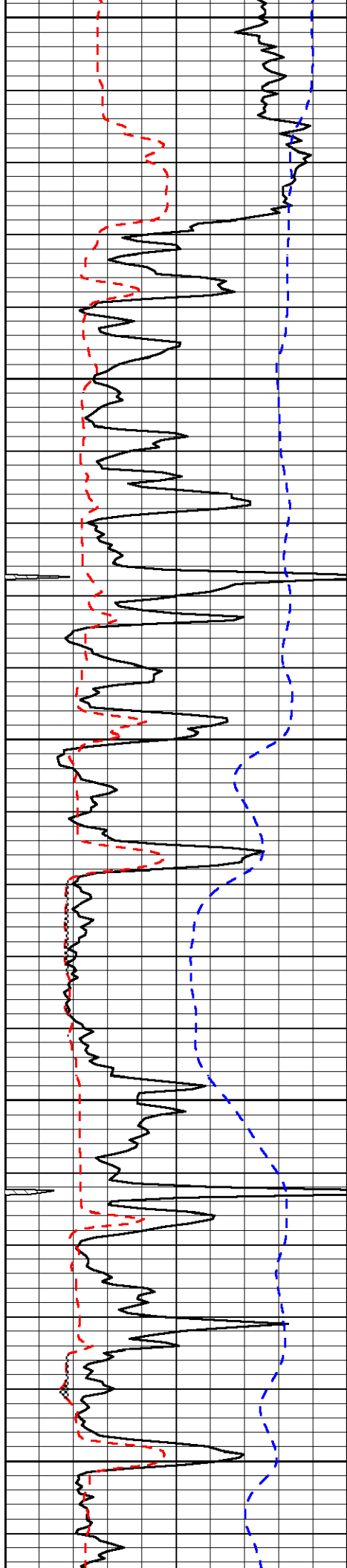


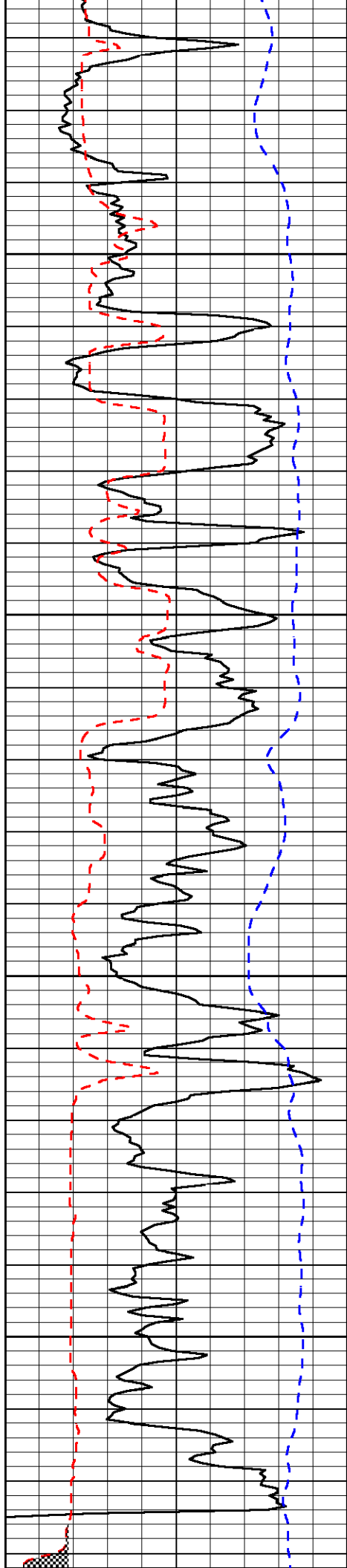
-36

-35

-35

-34



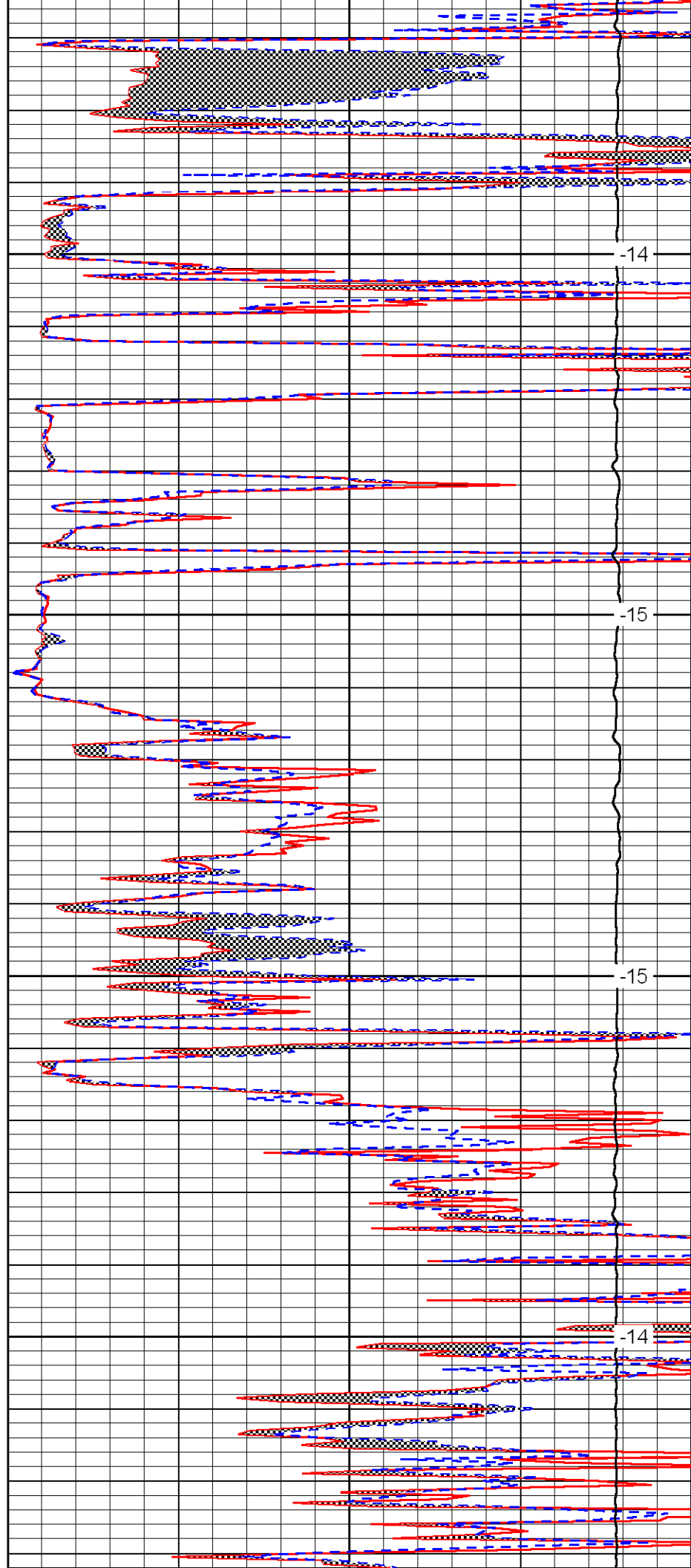


3500

3550

3600

3650

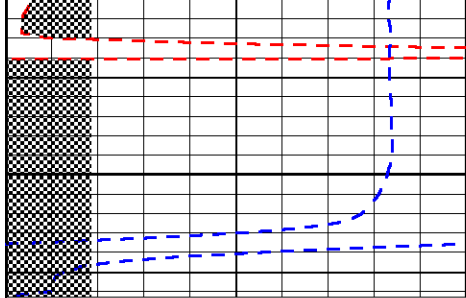


-14

-15

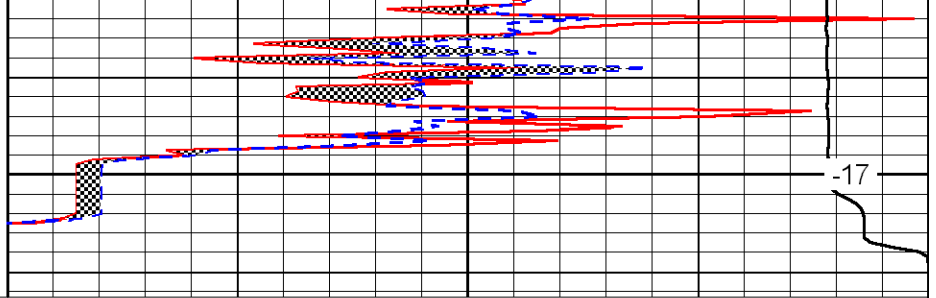
-15

-14



0	Gamma Ray	150
6	Micro Log Caliper (in)	16
-200	SP (MV)	0

3700



0	Micro Inverse 1 X 1 (Ohm-m)	40
0	Micro Normal 2' (Ohm-m)	40
10000	Line Weight (lb)	0

LSPD  
(ft/min)

-17