



**Borehole Compensated
Sonic Log**

DIGITAL LOG (785) 625-3858

API No. 15-009-25,337-00-00	Company F G Holl Company, L.L.C	Location 1577' FSL & 833' FEL	Other Services CNL/CDL MEL/DIL
Well Romine No. 1-1	County Barton		
Field Clarence	State Kansas		
Sec: 1	Twp: 20S	Rge: 15W	Elevation K.B. 1960 D.F. 1952 G.L. 1952

Permanent Datum Log Measured From Drilling Measured From	Ground Level Kelly Bushing Kelly Bushing	Elevation 1952 8 Ft. Above Perm. Datum
Date 09/01/2009	Run Number Two	
Type Log BHC Sonic	Depth Driller 3700	
Depth Logger 3702	Bottom Logged Interval 3691	
Top Logged Interval 850	Type Fluid In Hole Chemical	
Salinity, PPM CL 6,800	Density 9.4	
Level Full	Max. Rec. Temp. F 115	
Operating Rig Time 6 Hours	Equipment -- Location 10 Hays	
Recorded By Jason Wellbrock	Witnessed By Renea Husted	

Run No	Bit	Borehole Record		Casing Record	
		From	To	From	To
1	12.25	00	865	8.625	24#
2	7.875	865	3700		

<<< Fold Here >>>

All interpretations are opinions based on inferences from electrical or other measurements and we cannot and do not guarantee the accuracy or correctness of any interpretation, and we shall not, except in the case of gross or willful negligence on our part, be liable or responsible for any loss, costs, damages, or expenses incurred or sustained by anyone resulting from any interpretation made by any of our officers, agents or employees. These interpretations are also subject to our general terms and conditions set out in our current Price Schedule.

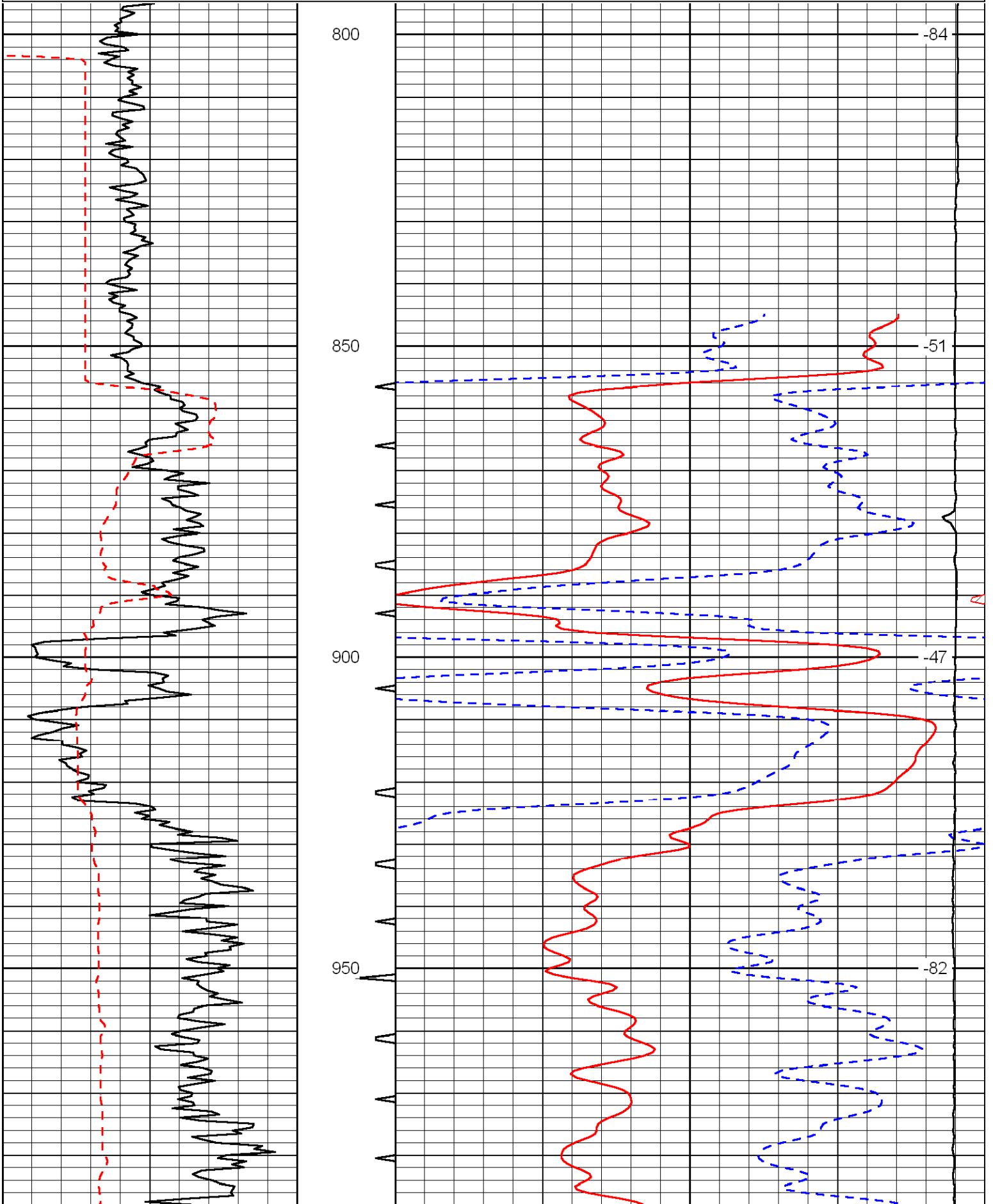
Comments

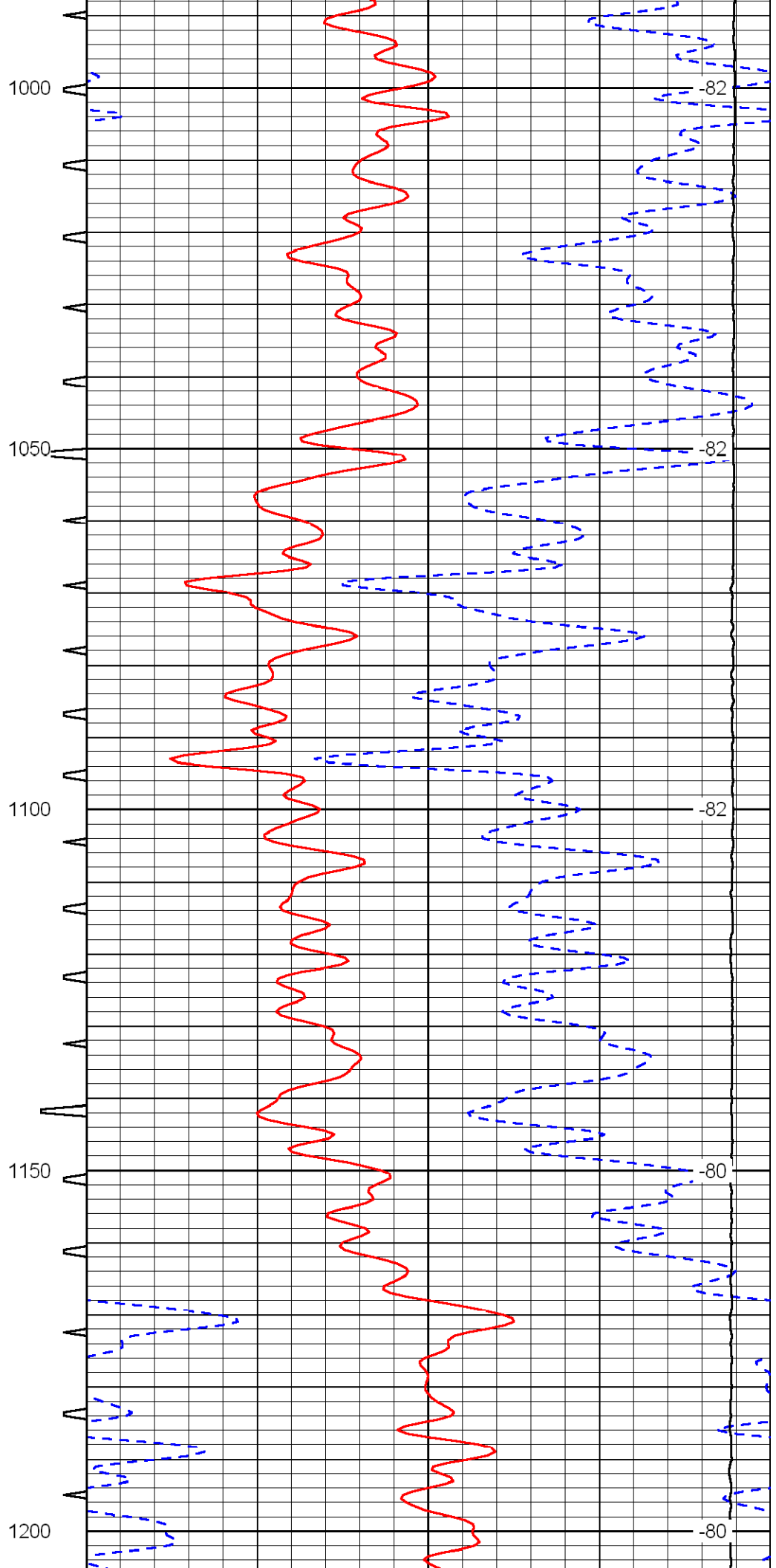
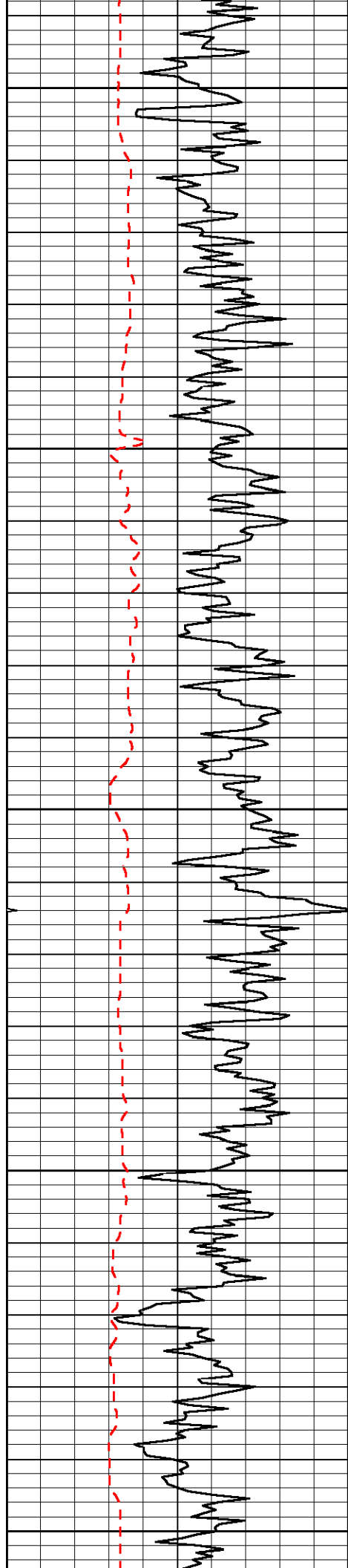
Thank you for using Log-Tech, Inc.
(785) 625-3858

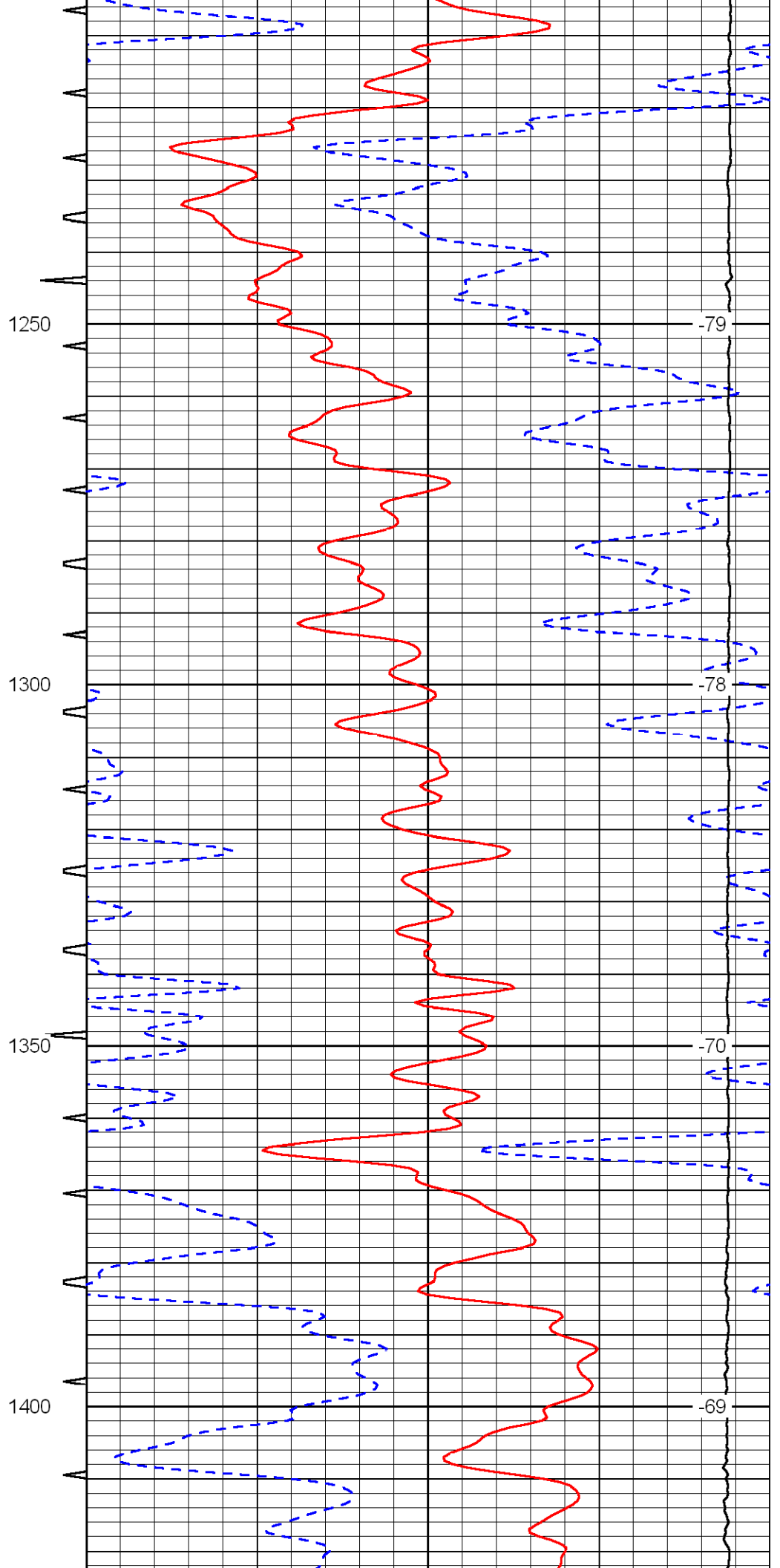
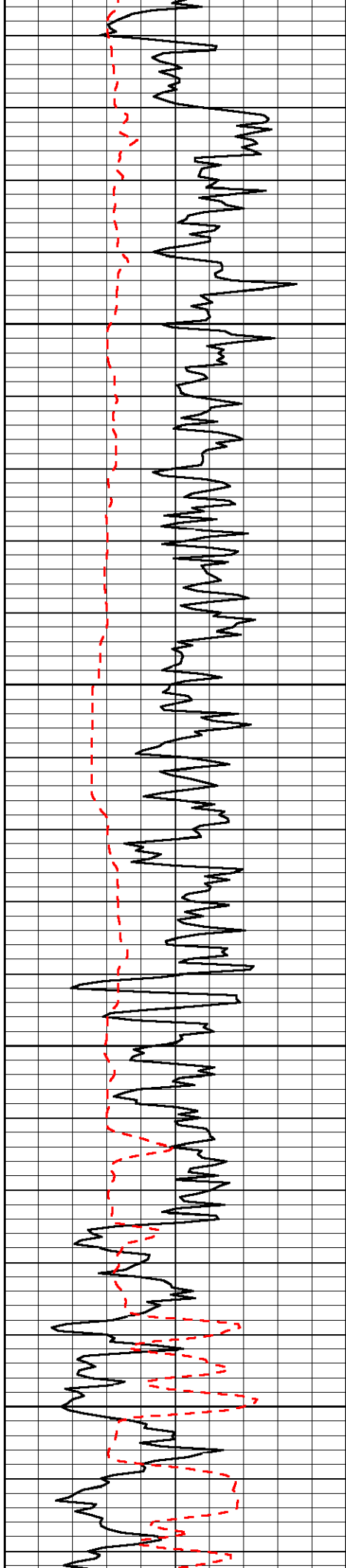
Heizer S to Stop Sign, W 2, 2 S, 1/2 W, N Into

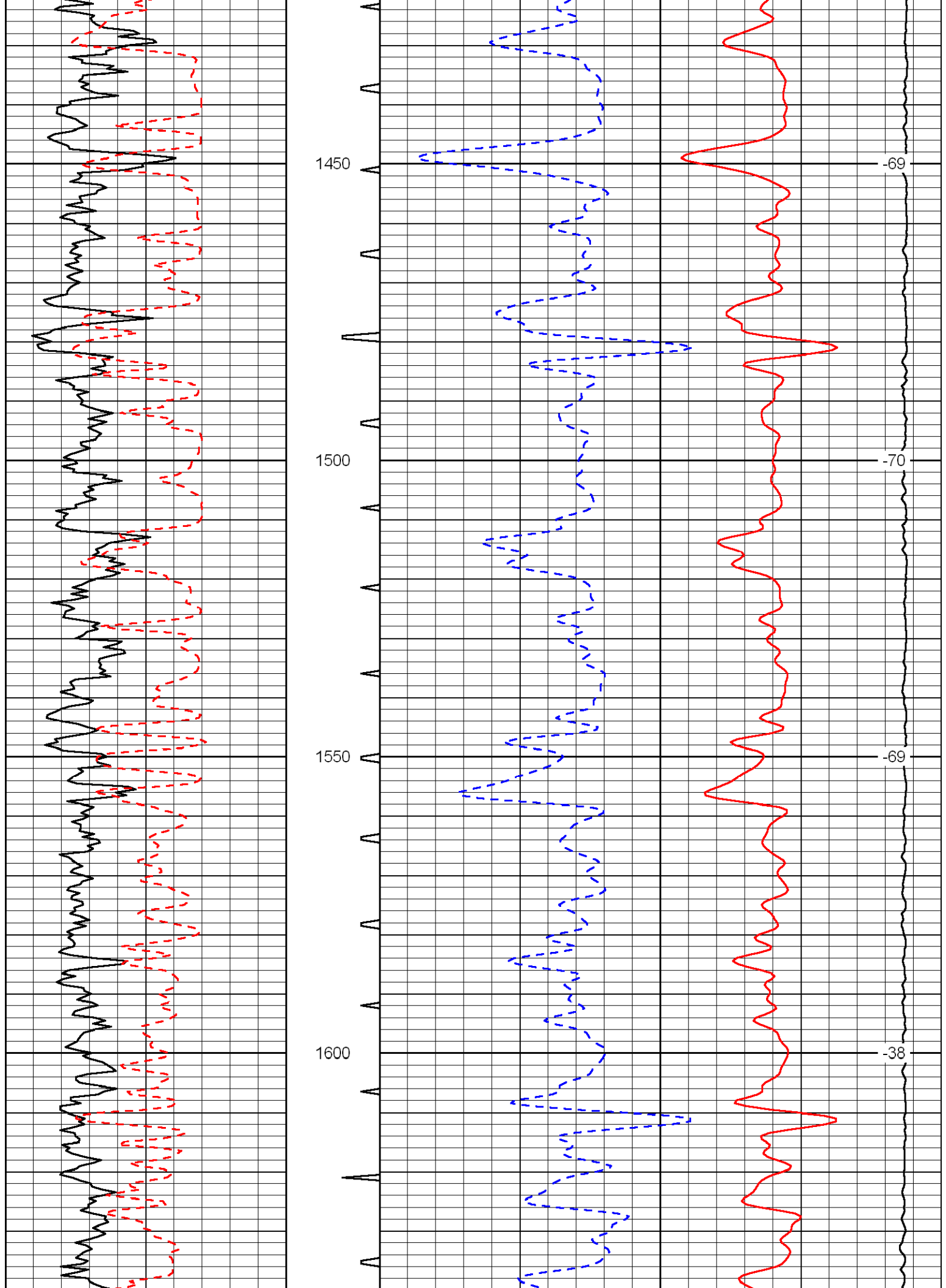
Database File: c:\warrior\data\fg holl_romine no. 1-1\fghollhd2.db
 Dataset Pathname: dil/fg2in
 Presentation Format: sonic
 Dataset Creation: Tue Sep 01 23:02:22 2009
 Charted by: Depth in Feet scaled 1:240

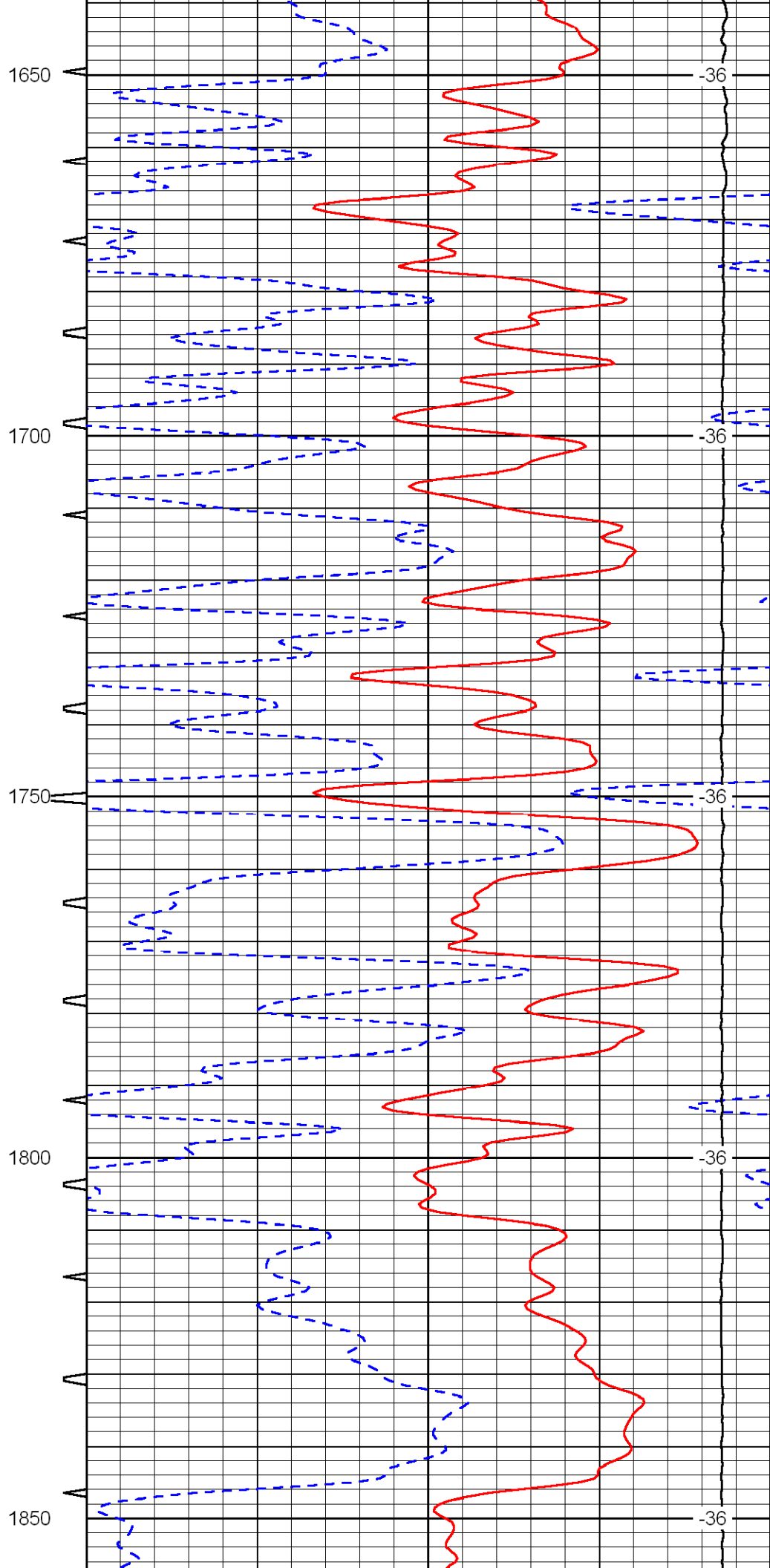
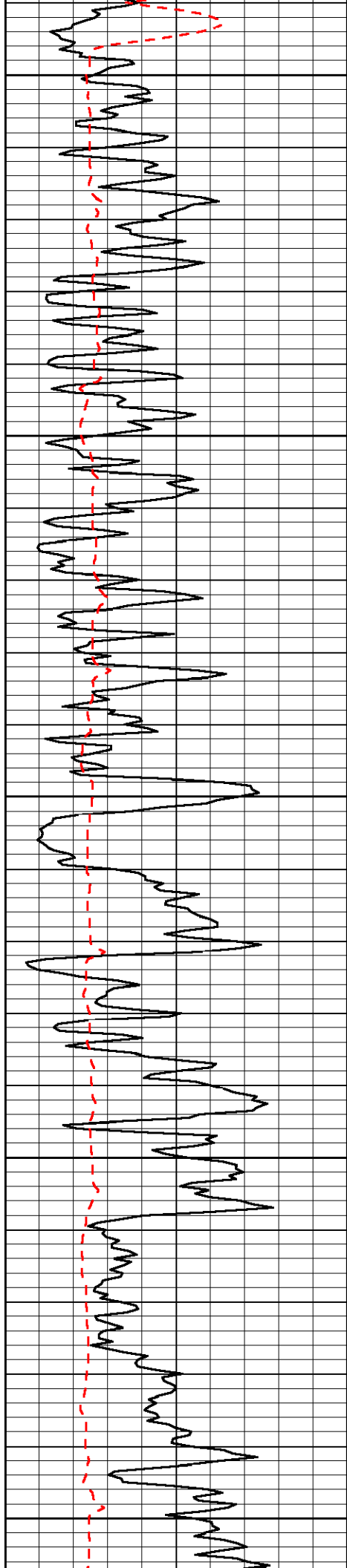
0	Gamma Ray	150	Sonic Int	140	Delta Time (usec/ft) (usec/ft)	40
150	Gamma Ray	300	5 (msec)	0	SPOR (pu)	-10
6	Caliper (in)	16		10000	LTEN (lb) (lb)	0
						LSPD (ft/min)

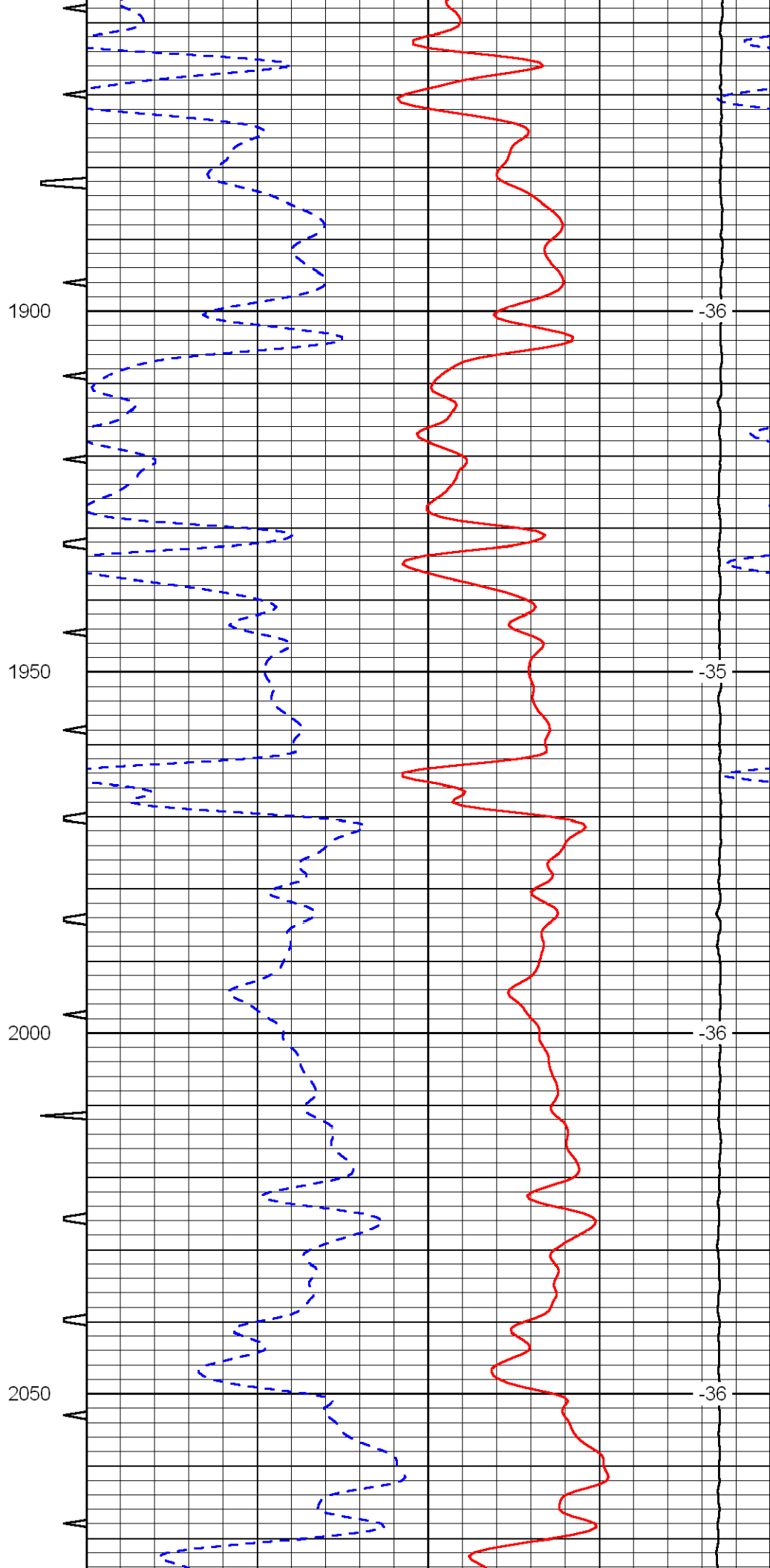
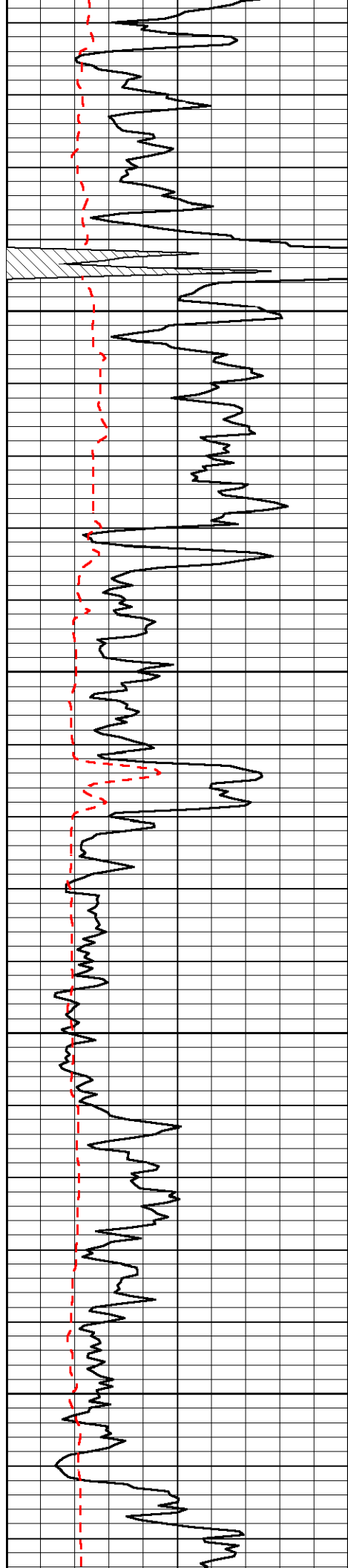


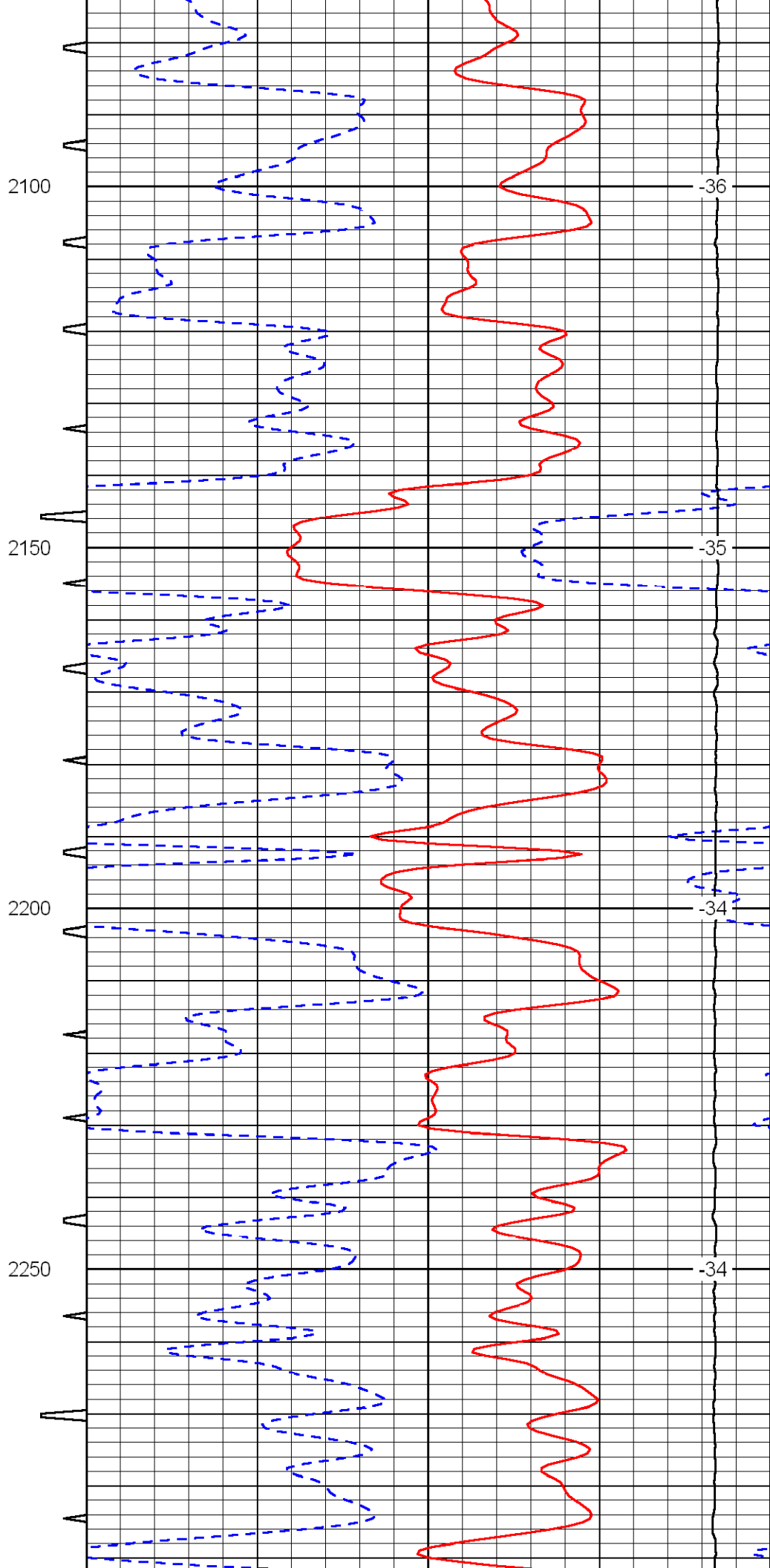
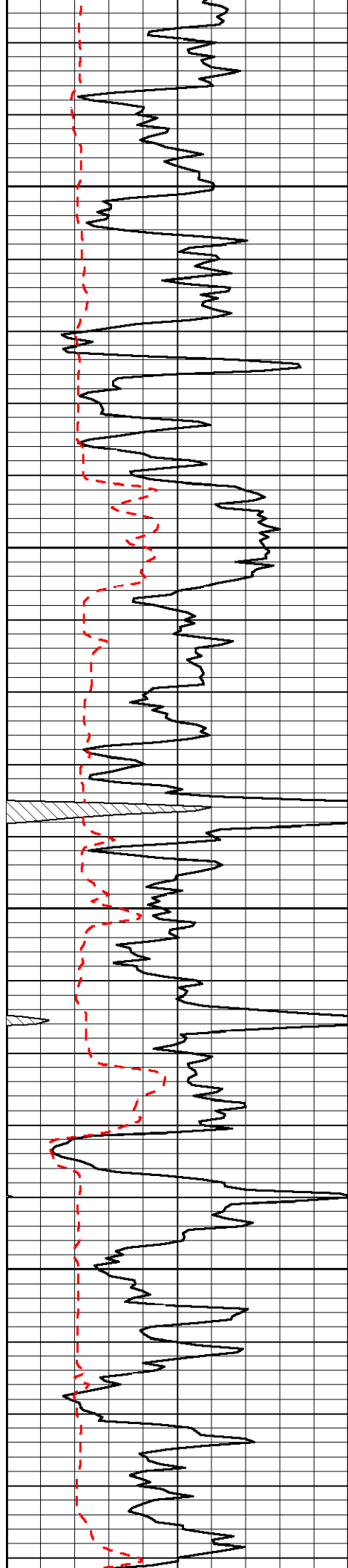


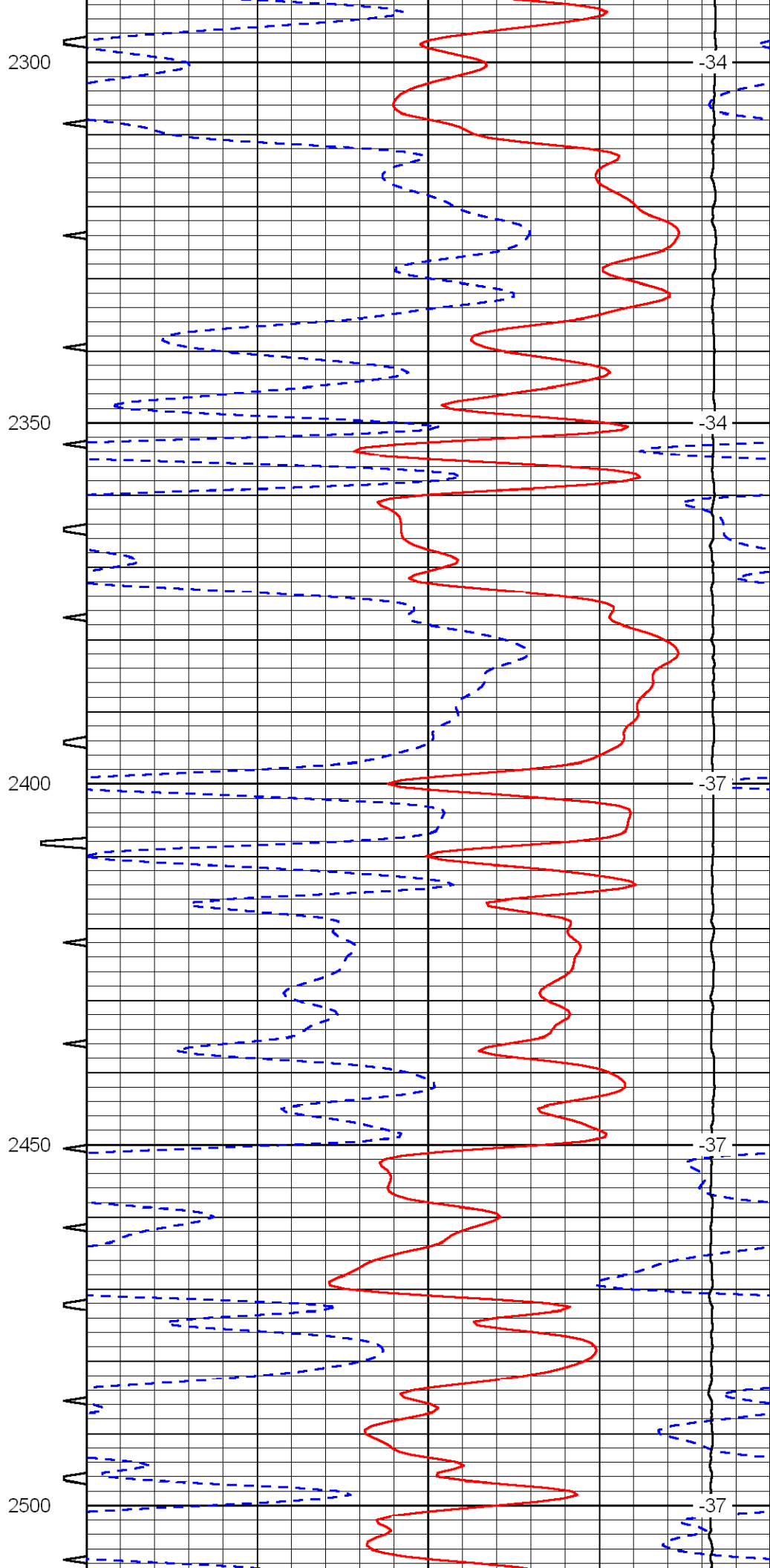
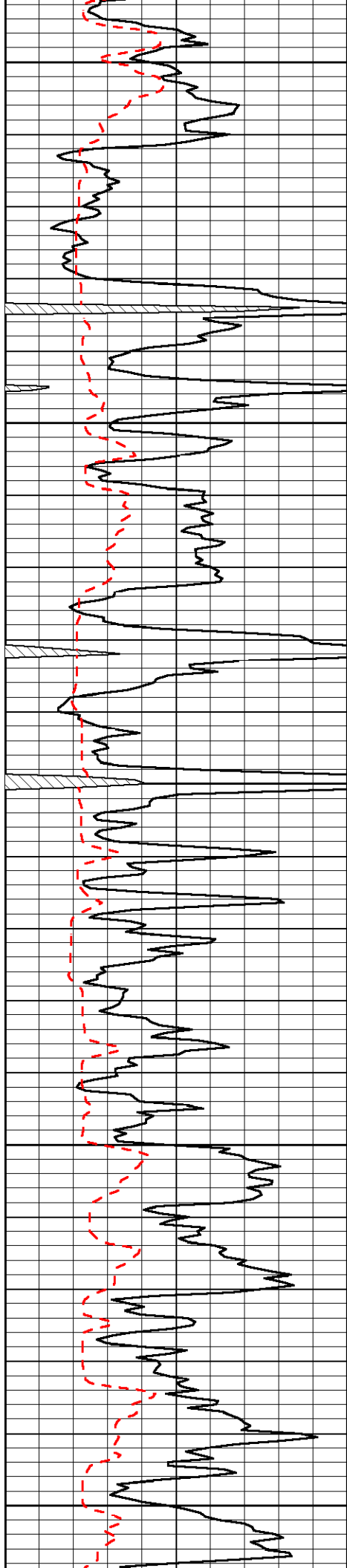


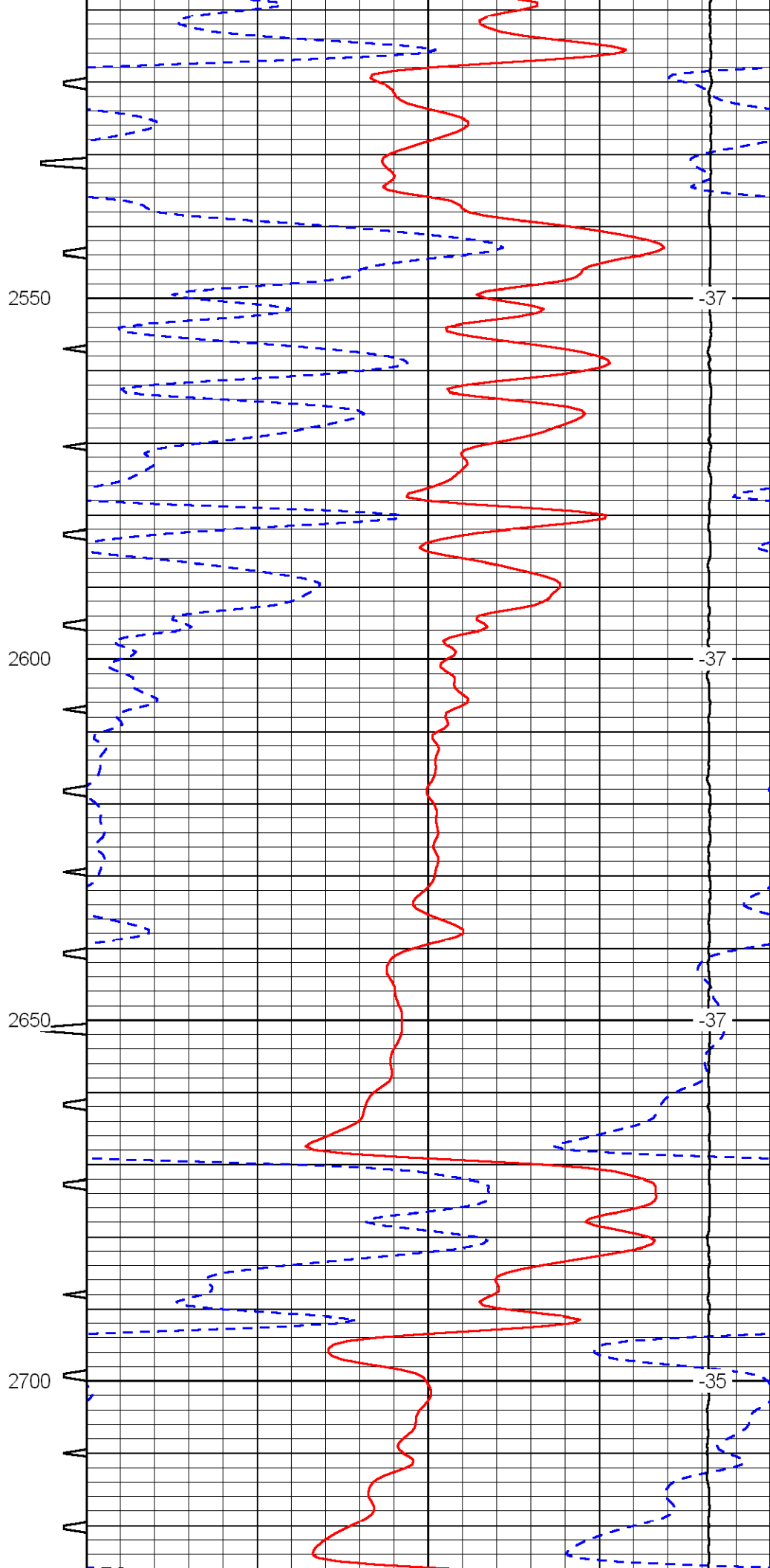
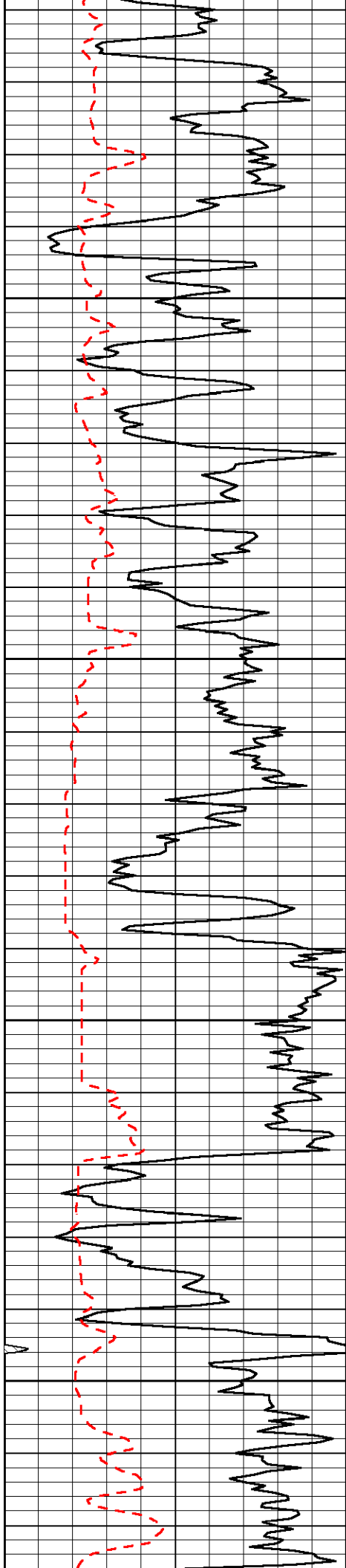


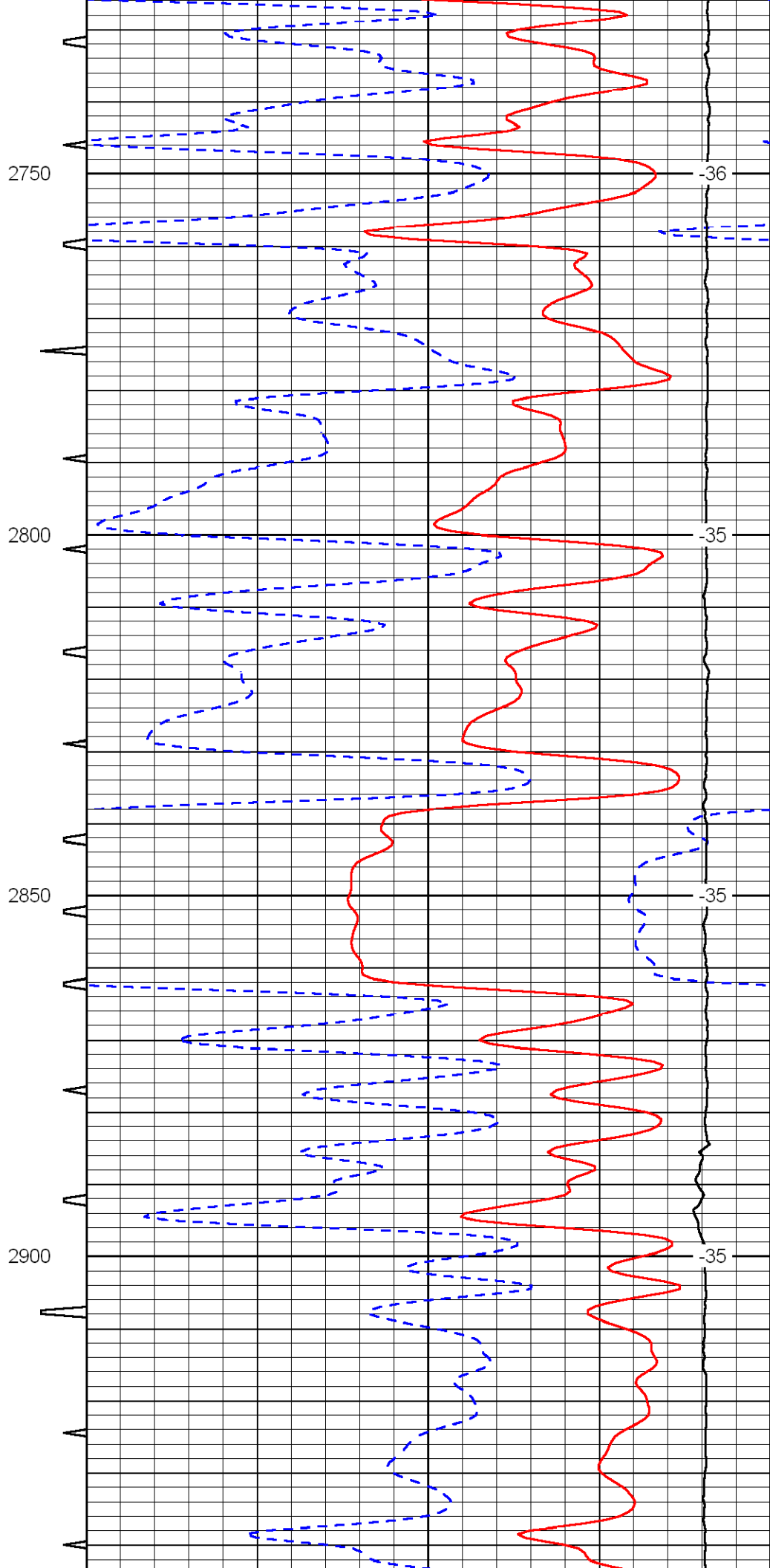
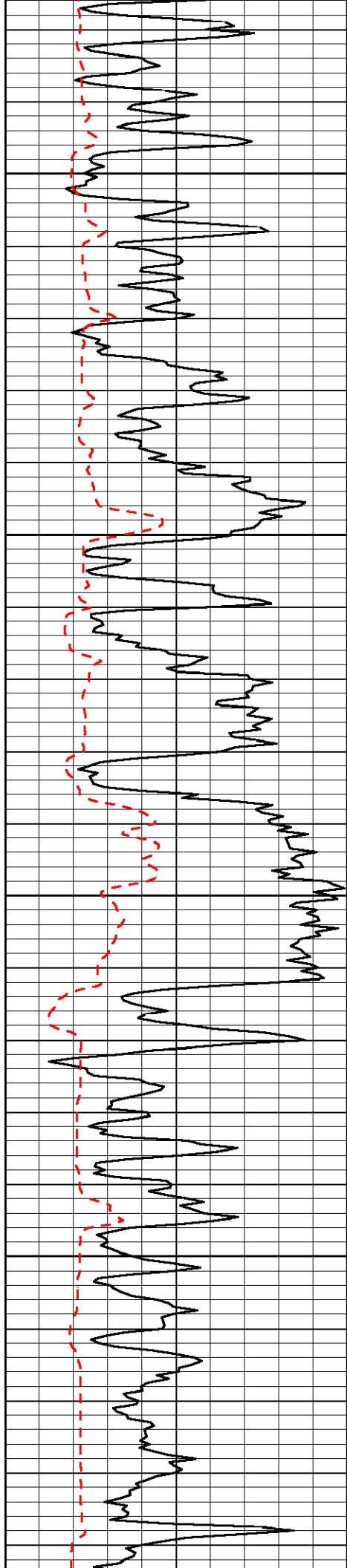


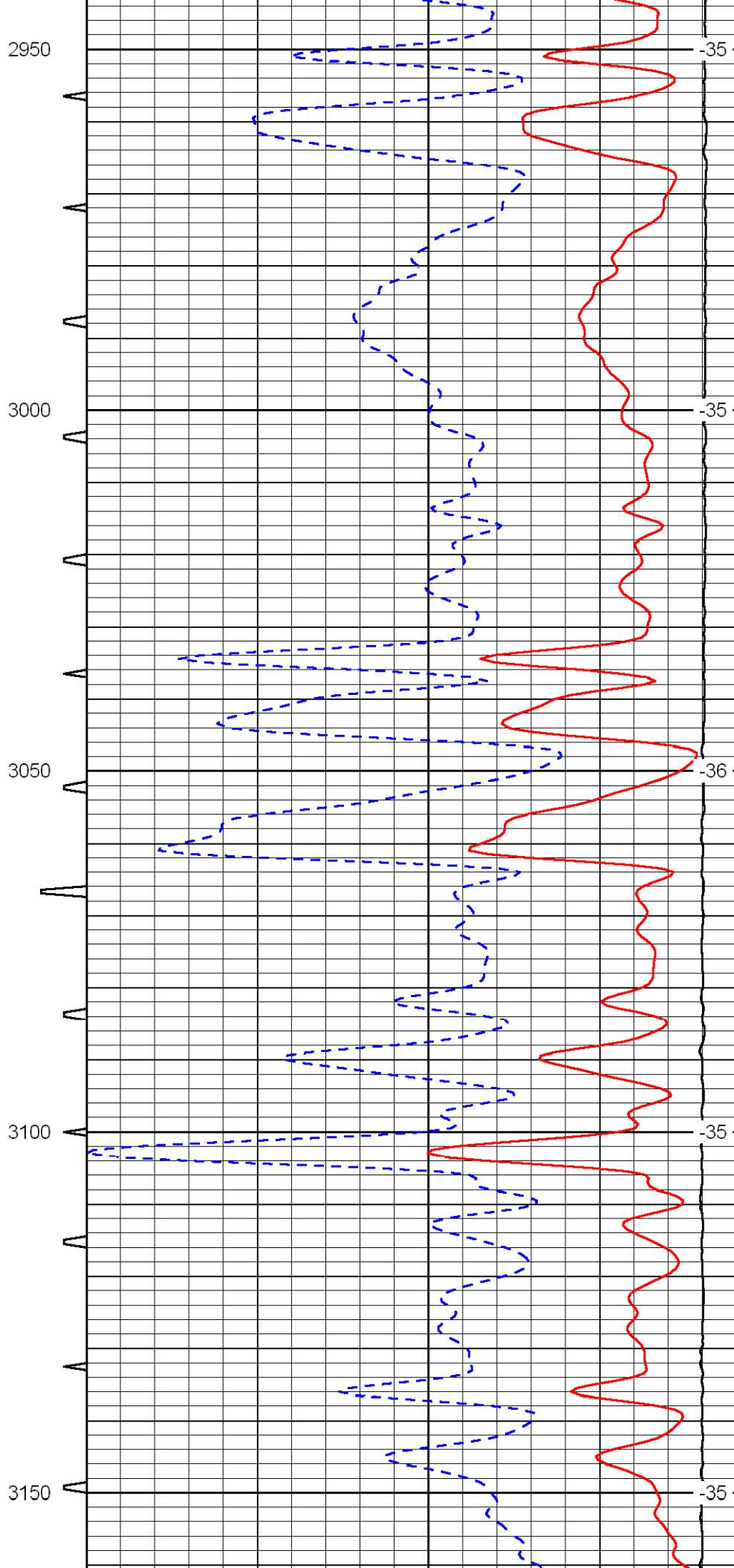
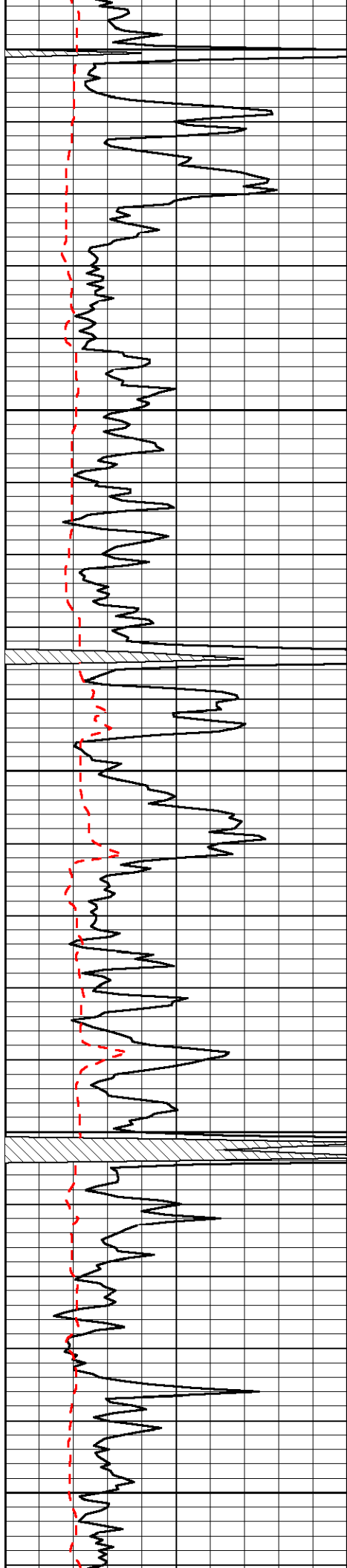


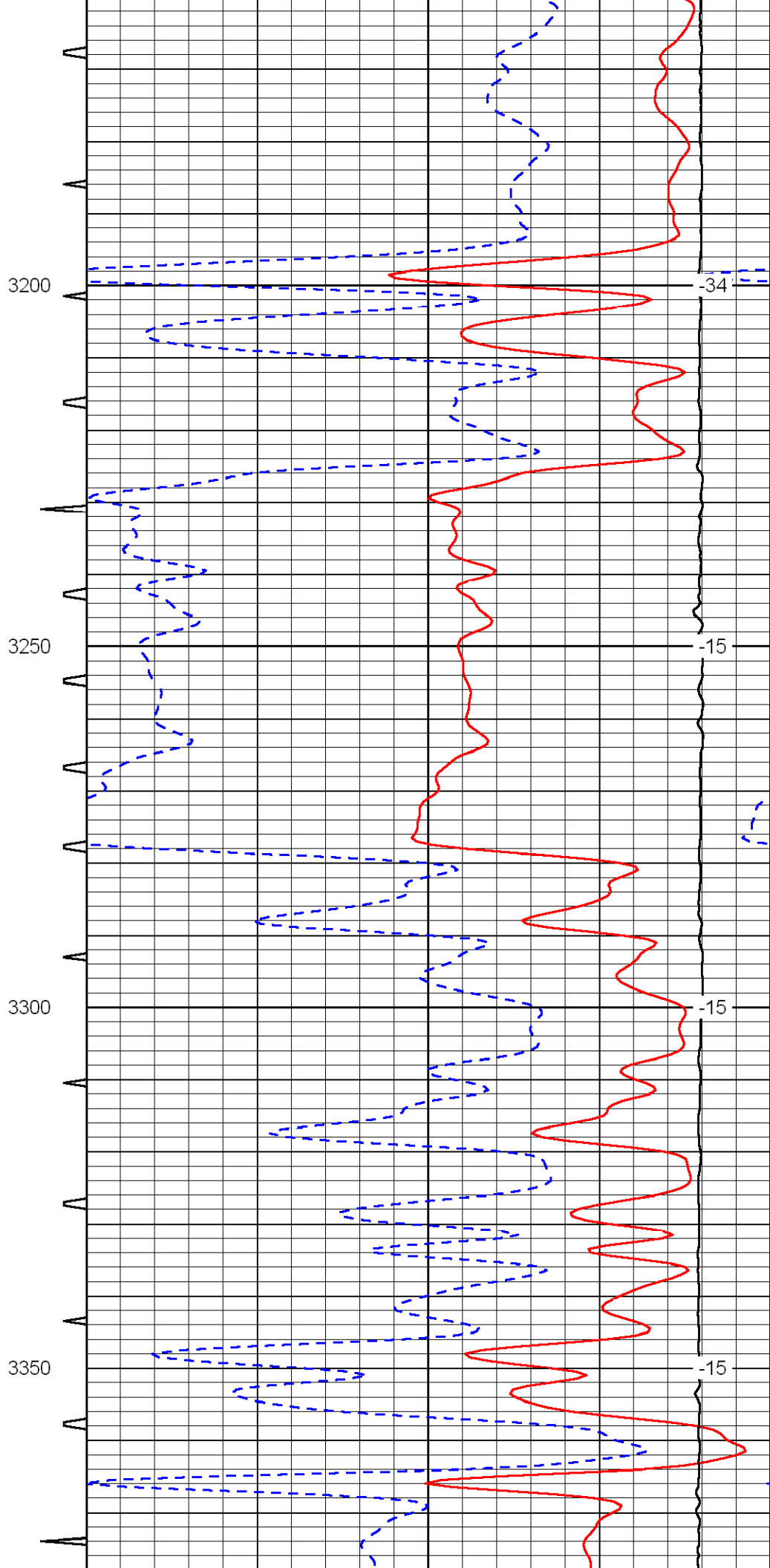
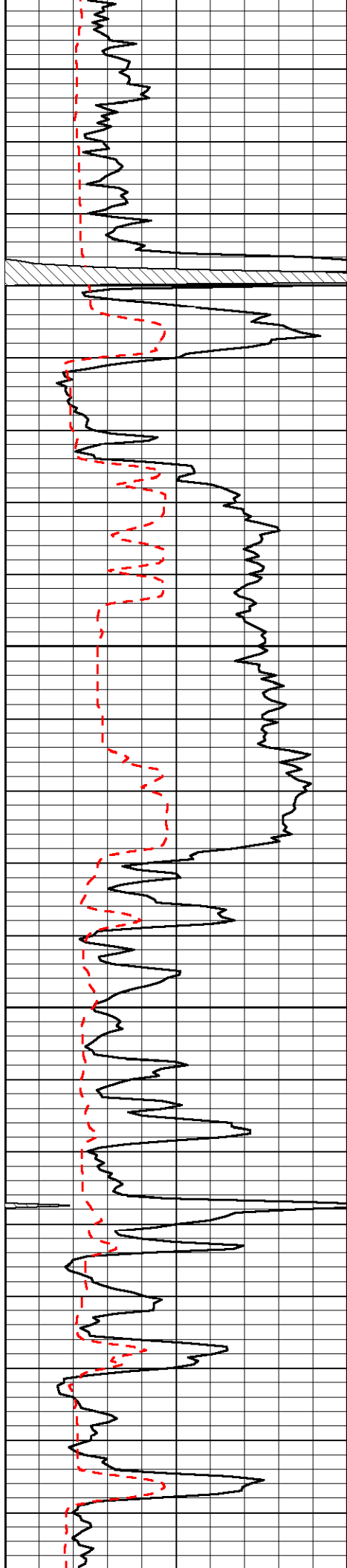


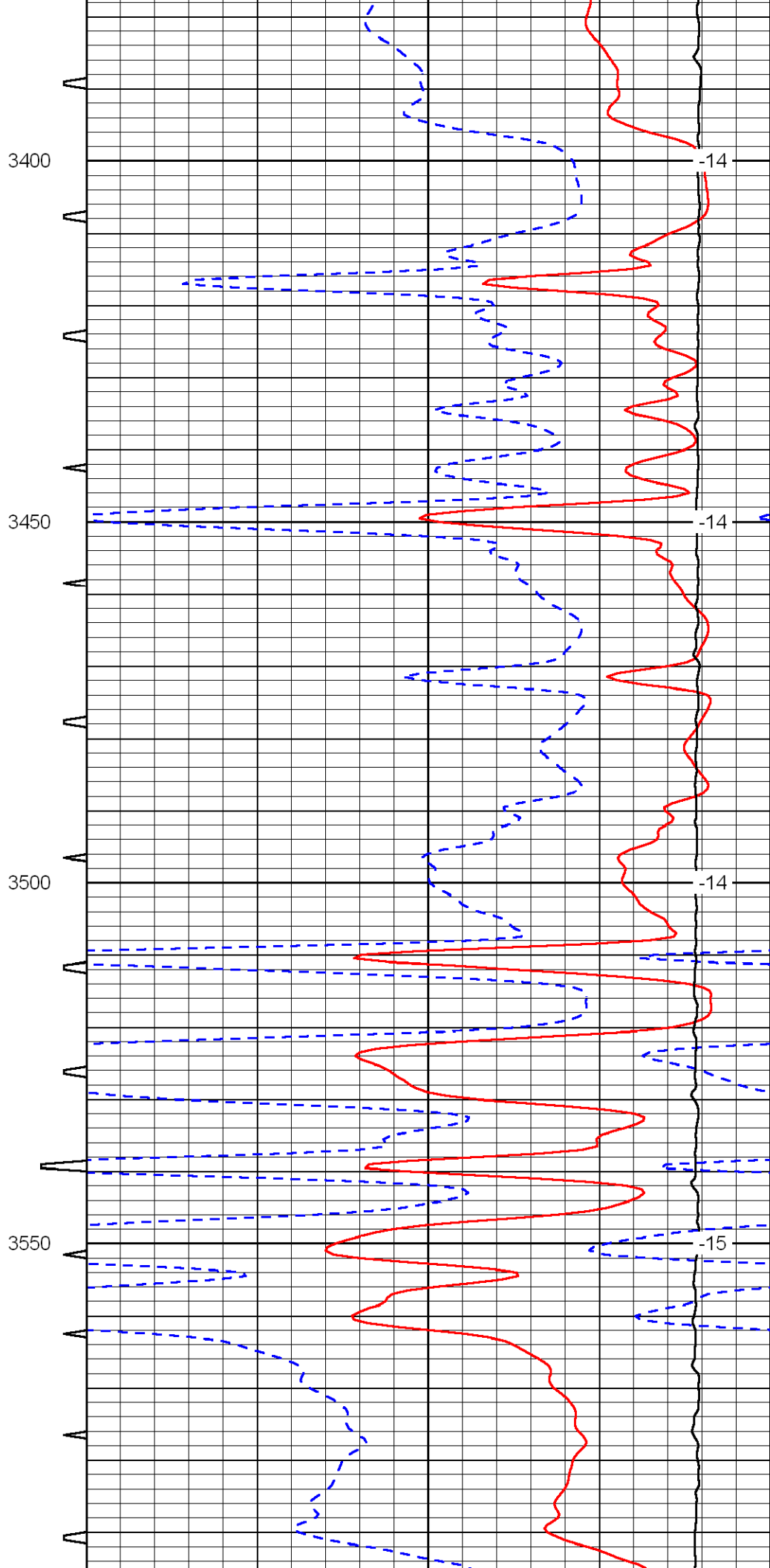
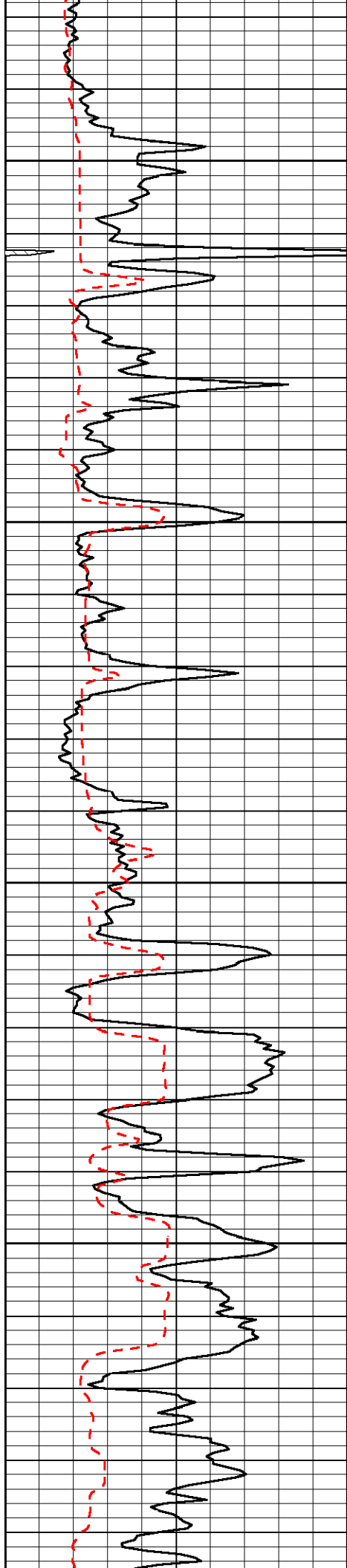


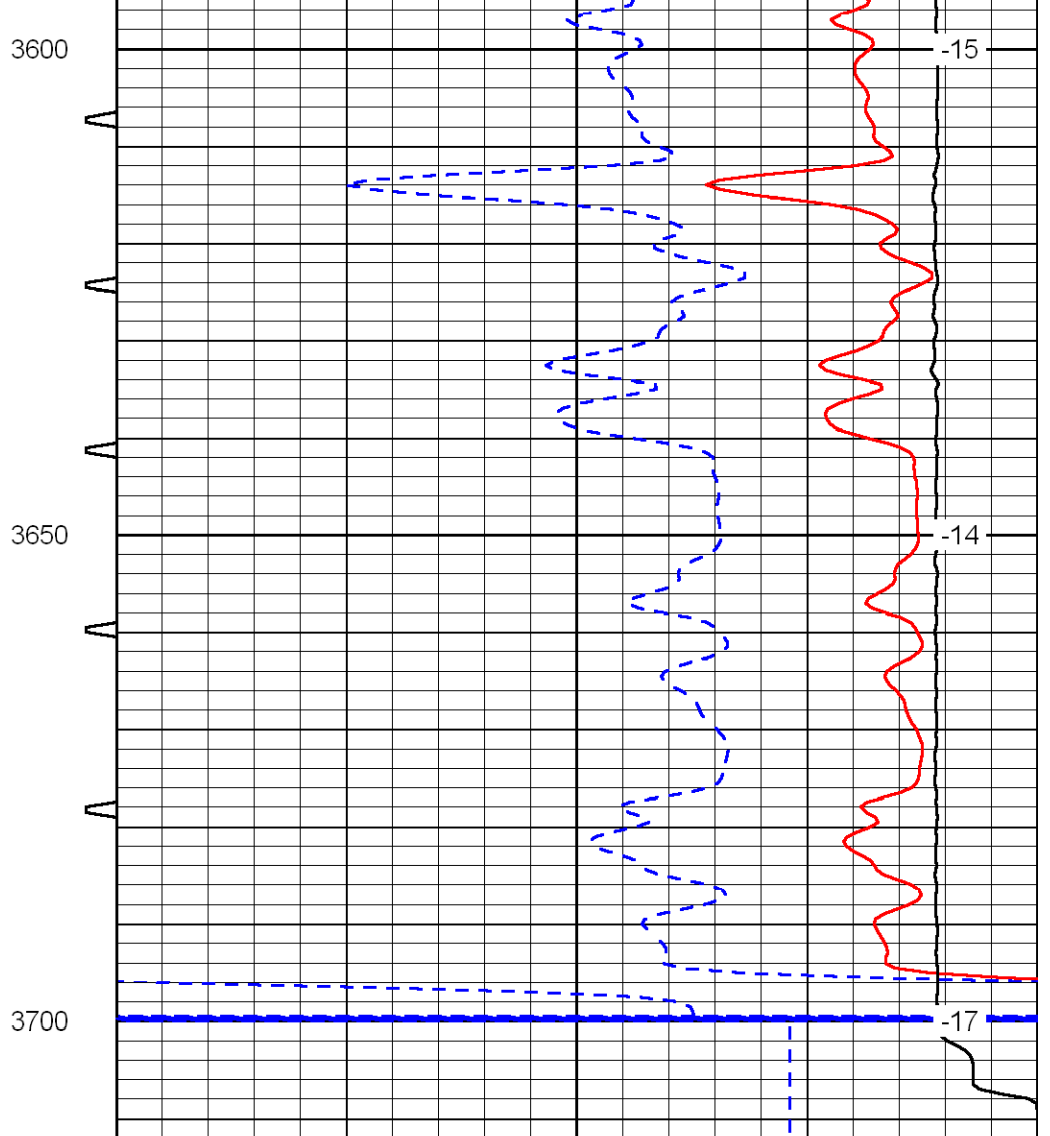
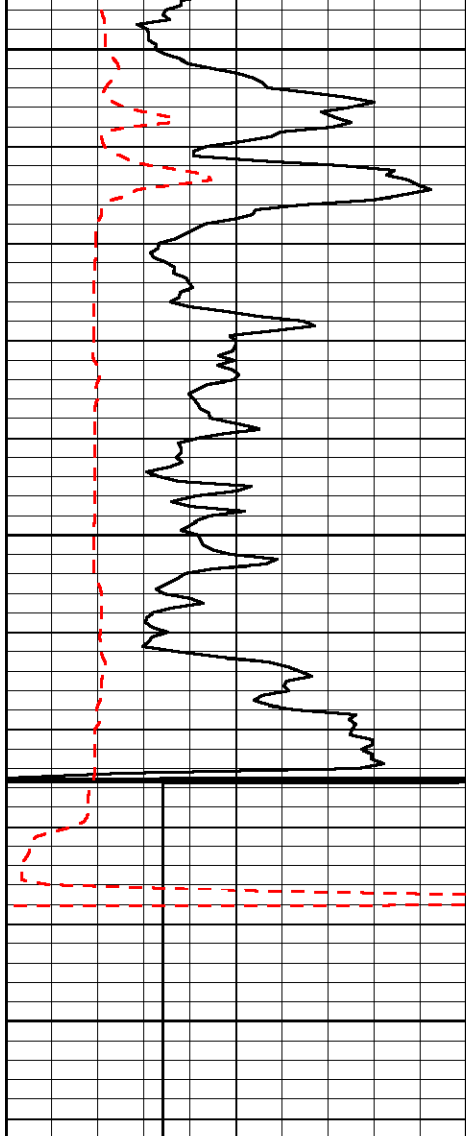












0	Gamma Ray	150	Sonic Int	140	Delta Time (usec/ft) (usec/ft)	40
150	Gamma Ray	300	5 (msec) 0	30	SPOR (pu)	-10
6	Caliper (in)	16		10000	LTEN (lb) (lb)	0
						LSPD (ft/min)