



Dual Induction Log

DIGITAL LOG (785) 625-3858

API No.	15-009-25,337-00-00	
Company	F G Holl Company, L.L.C	
Well	Romine No. 1-1	
Field	Clarence	
County	Barton	State
		Kansas
Location	1577' FSL & 833' FEL	
Sec: 1	Twp: 20S	Rge: 15W
Permanent Datum	Ground Level	Elevation 1952
Log Measured From	Kelly Bushing	8 Ft. Above Perm. Datum
Drilling Measured From	Kelly Bushing	
		Other Services CNL/CDL MEL/BHCS
		Elevation K.B. 1960 D.F. 1952 G.L. 1952

Date	09/01/2009
Run Number	One
Depth Driller	3700
Depth Logger	3702
Bottom Logged Interval	3701
Top Log Interval	0
Casing Driller	8.625 @ 865
Casing Logger	856
Bit Size	7.875
Type Fluid in Hole	Chemical
Salinity, ppm CL	6.800
Density / Viscosity	9.4 53
pH / Fluid Loss	10.0 NA
Source of Sample	Flowline
Rm @ Meas. Temp	.45 @ 75
Rmf @ Meas. Temp	.33 @ 75
Rmc @ Meas. Temp	.60 @ 75
Source of Rmf / Rmc	Charts
Rm @ BHT	.29 @ 115
Operating Rig Time	6 Hours
Max Rec. Temp. F	115
Equipment Number	10
Location	Hays
Recorded By	Jason Wellbrock
Witnessed By	Renea Husted

<<< Fold Here >>>

All interpretations are opinions based on inferences from electrical or other measurements and we cannot and do not guarantee the accuracy or correctness of any interpretation, and we shall not, except in the case of gross or willful negligence on our part, be liable or responsible for any loss, costs, damages, or expenses incurred or sustained by anyone resulting from any interpretation made by any of our officers, agents or employees. These interpretations are also subject to our general terms and conditions set out in our current Price Schedule.

Comments

Thank you for using Log-Tech, Inc.
(785) 625-3858

Heizer S to Stop Sign, W 2, 2 S, 1/2 W, N Into

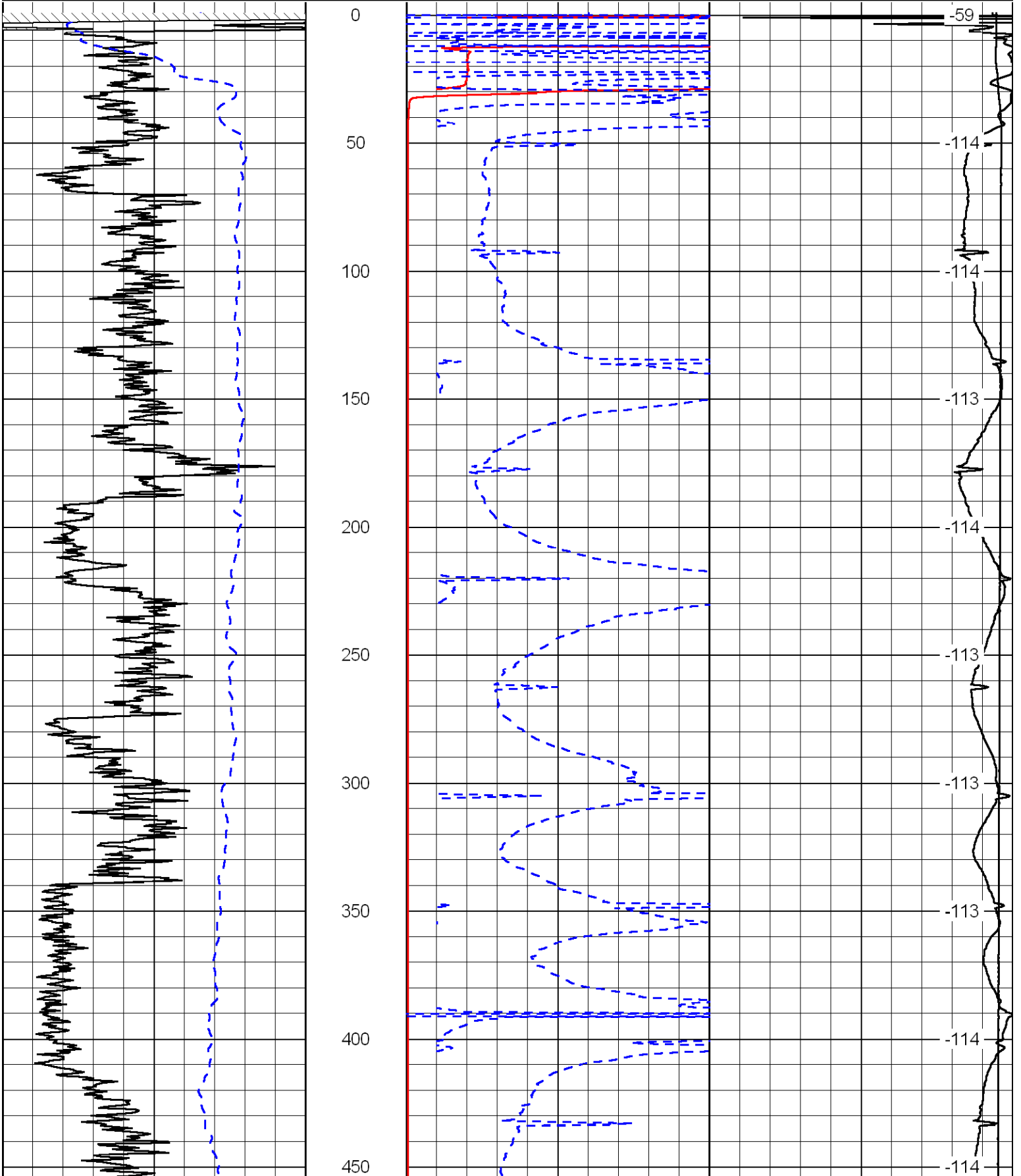
Database File: c:\warrior\data\fg holl_romine no. 1-1\fghollhd2.db
 Dataset Pathname: dil/fg2in
 Presentation Format: dil2in
 Dataset Creation: Tue Sep 01 23:02:22 2009
 Charted by: Depth in Feet scaled 1:600

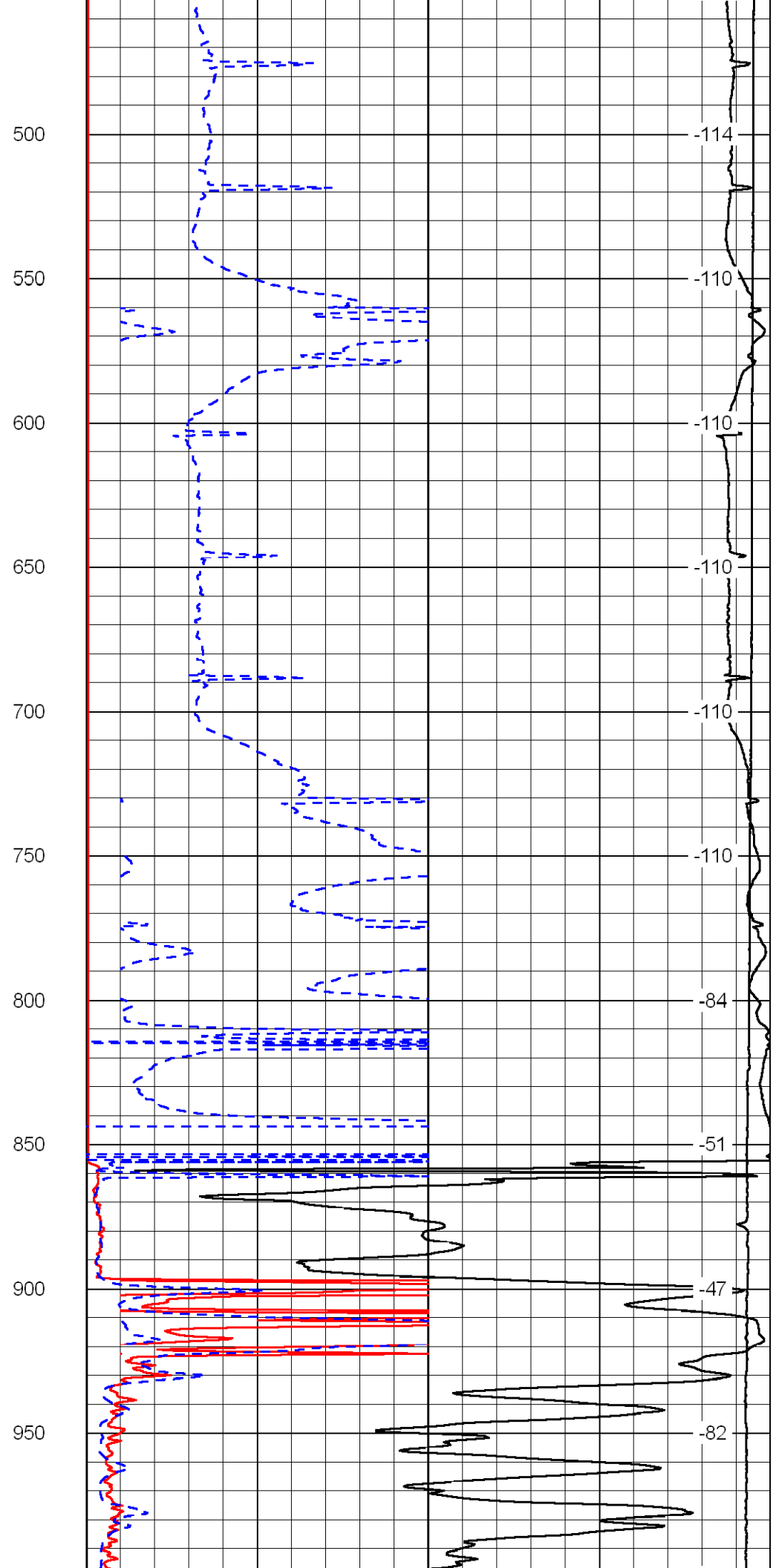
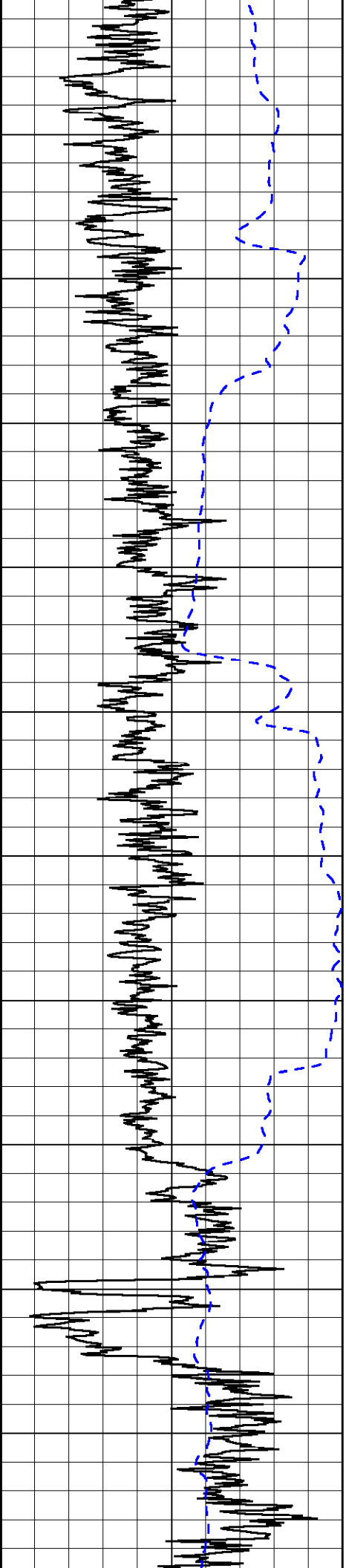
0 Gamma Ray 150
-200 SP (MV) 0

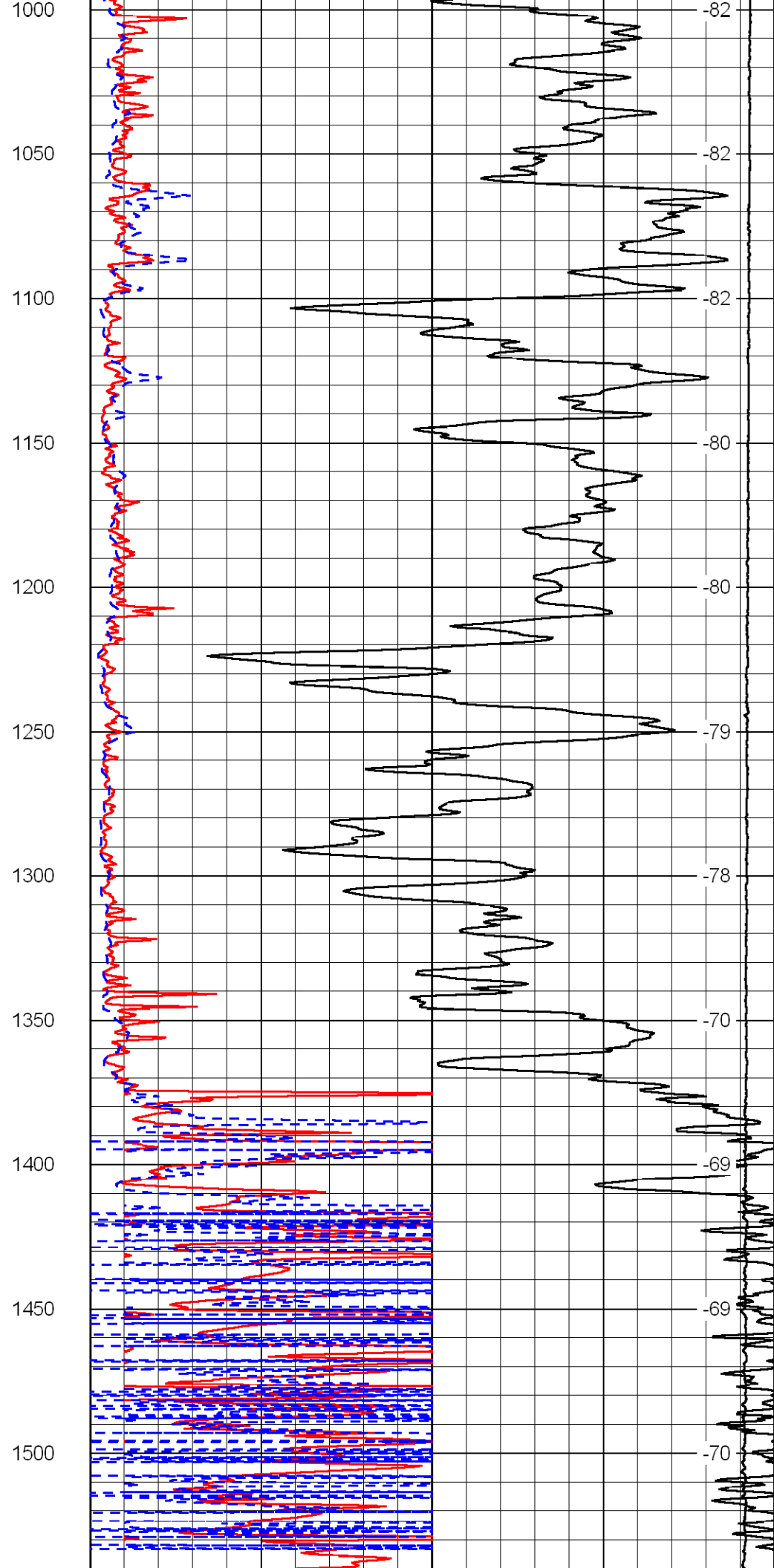
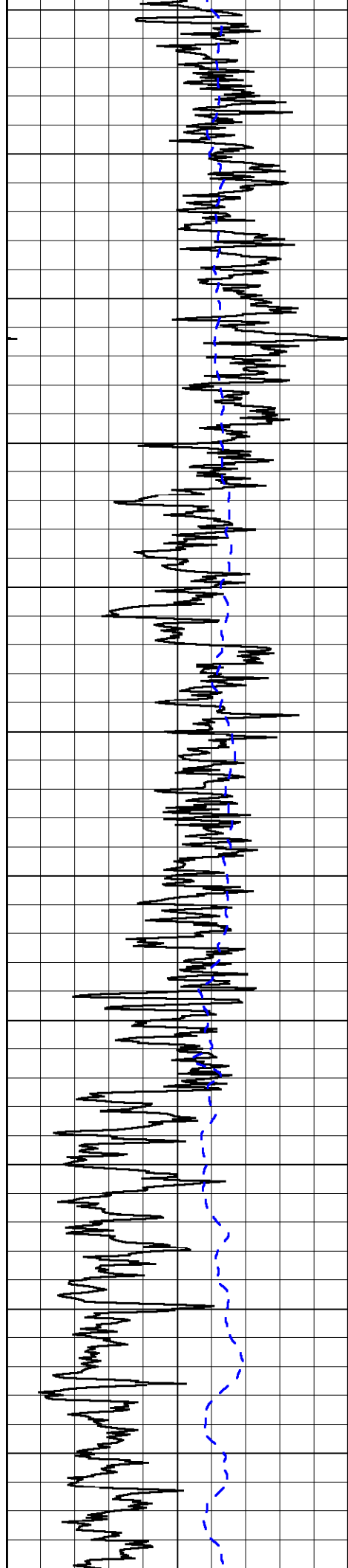
0 Shallow Resistivity (Ohm-m) 50
0 Deep Resistivity (Ohm-m) 50
1000 Conductivity (mmho/m) 0
15000 Line Tension (lb) 0

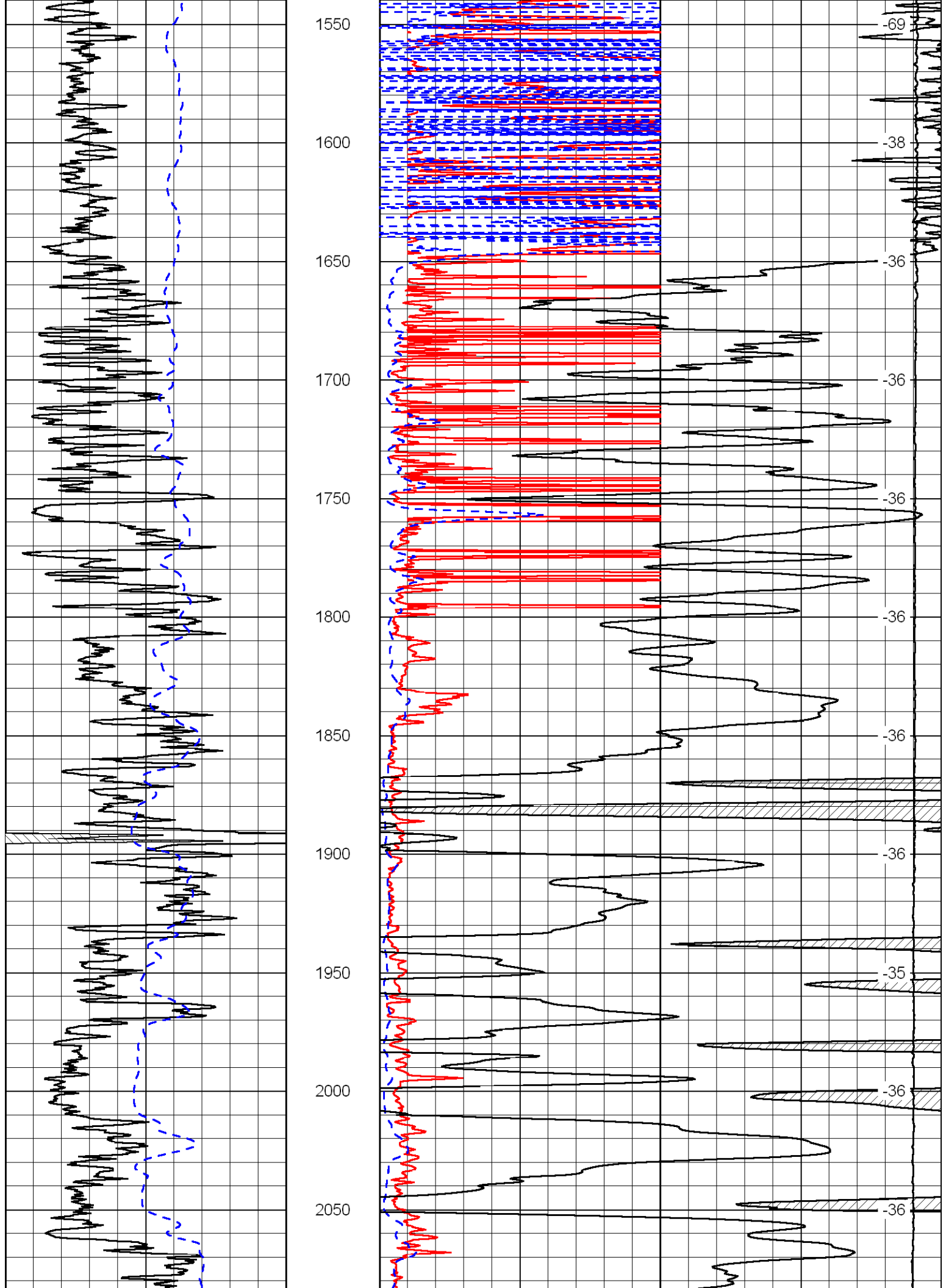
LSPD
(ft/min) 0

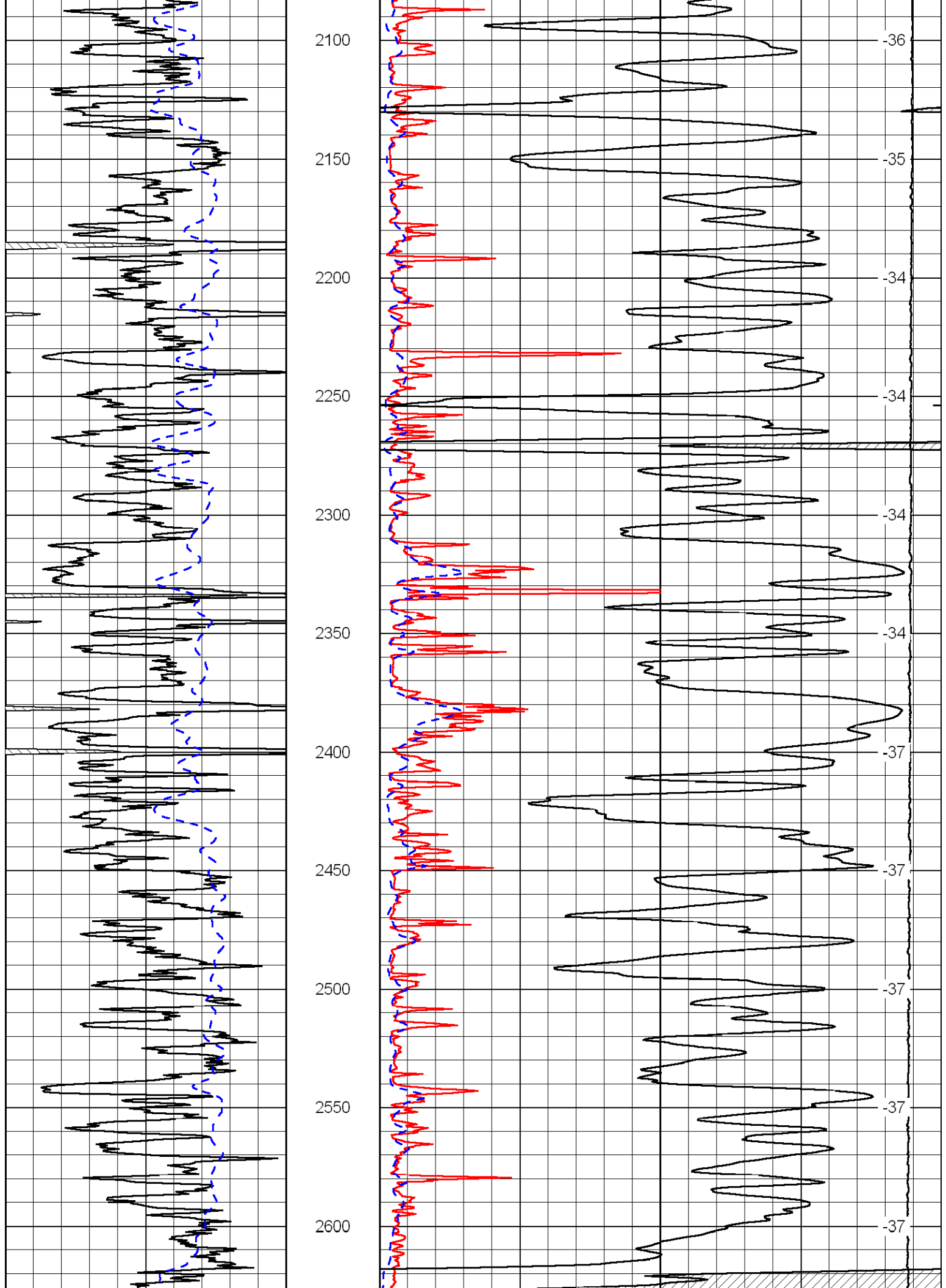
Shallow Resistivity
50 (Ohm-m) 500
50 Deep Resistivity (Ohm-m) 500

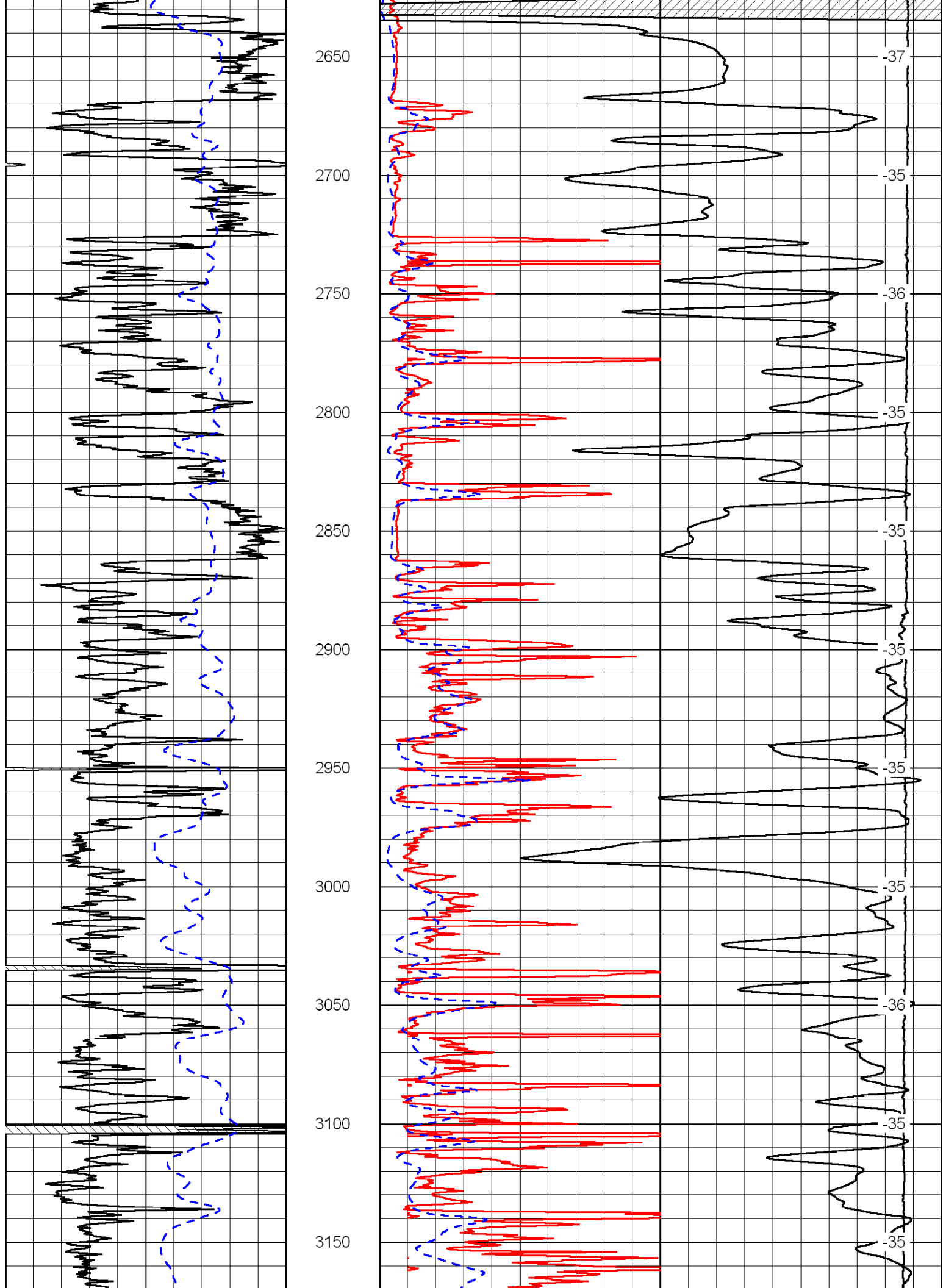


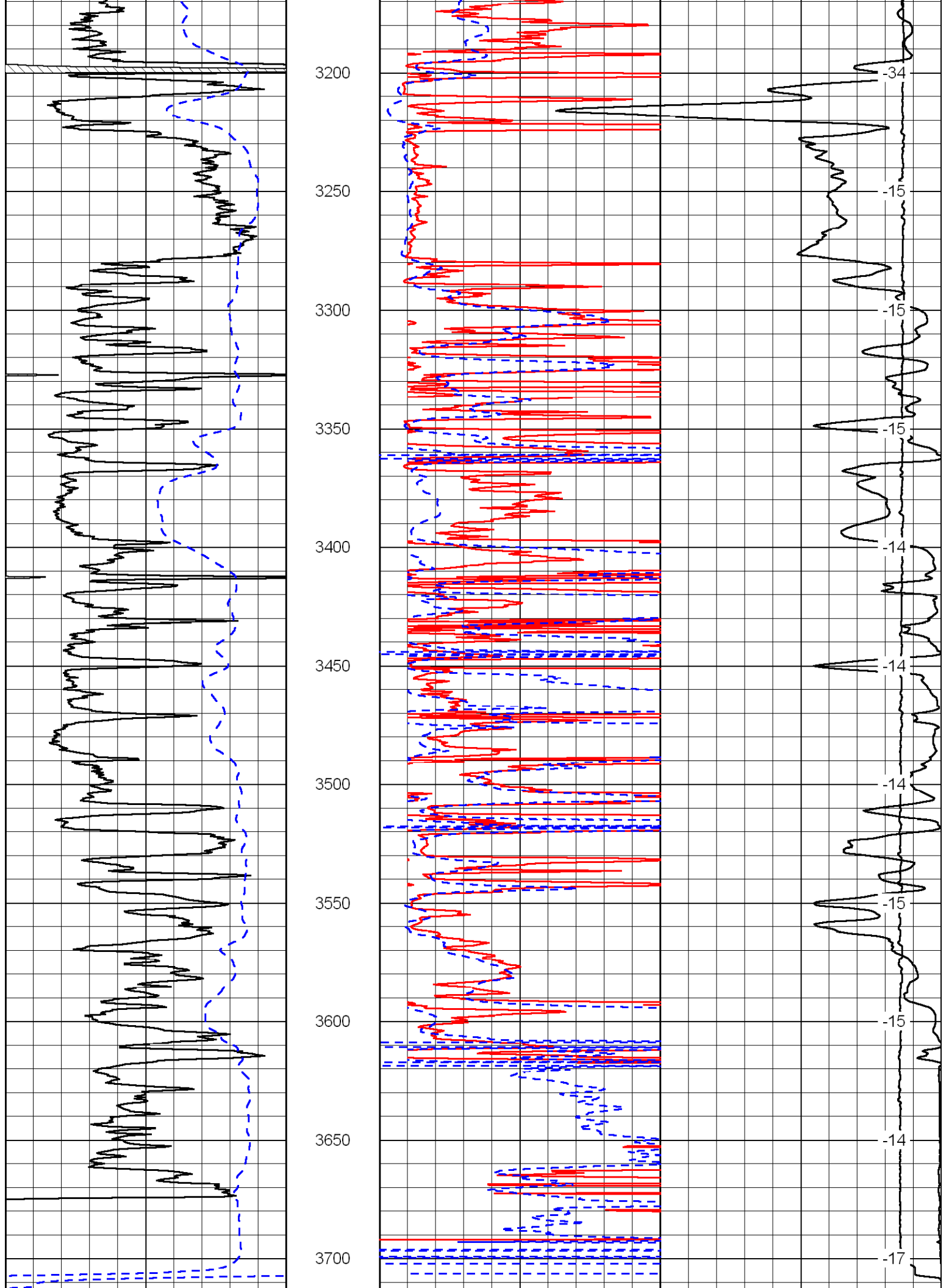












0	Gamma Ray	150
-200	SP (MV)	0

0	Shallow Resistivity (Ohm-m)	50
0	Deep Resistivity (Ohm-m)	50
1000	Conductivity (mmho/m)	0
15000	Line Tension (lb)	0
Shallow Resistivity		
50	(Ohm-m)	500
50	Deep Resistivity (Ohm-m)	500

LSPD
(ft/min)



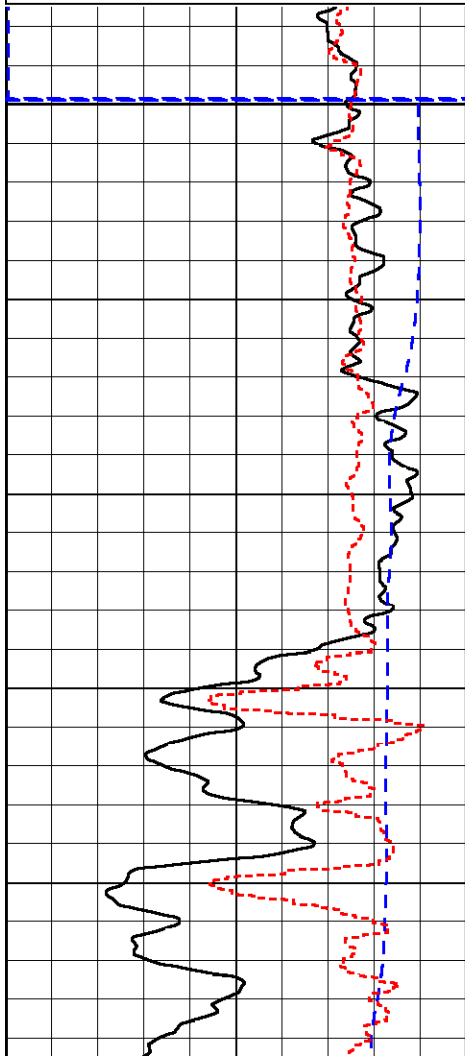
High Resolution

Database File: c:\warrior\data\fg holl_romine no. 1-1\fg hollhd2.db
 Dataset Pathname: dil/highres
 Presentation Format: dil
 Dataset Creation: Tue Sep 01 23:02:28 2009
 Charted by: Depth in Feet scaled 1:120

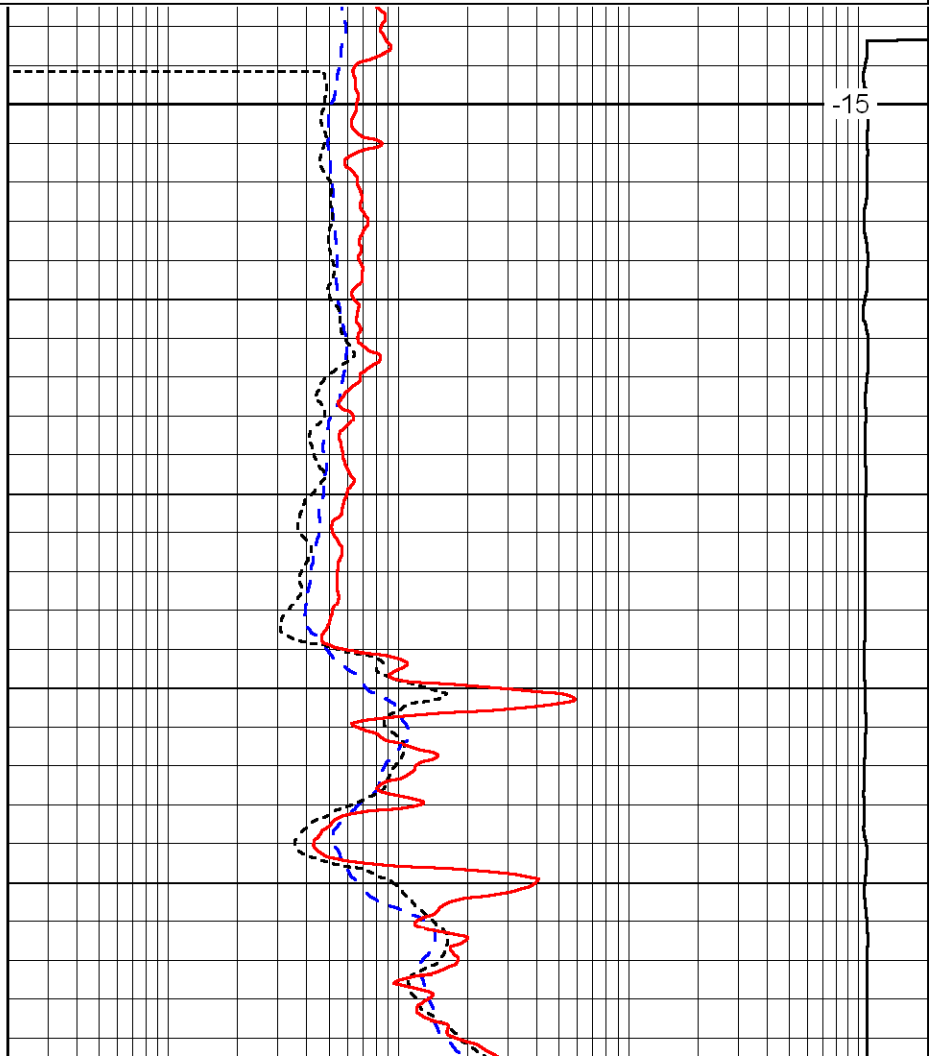
0	Gamma Ray	150
-200	SP (MV)	0
-160	Rxo / Rt	40

0.2	Deep Resistivity (Ohm-m)	2000
0.2	Medium Resistivity (Ohm-m)	2000
0.2	Shallow Resistivity (Ohm-m)	2000
15000	Line Tension (lb)	0

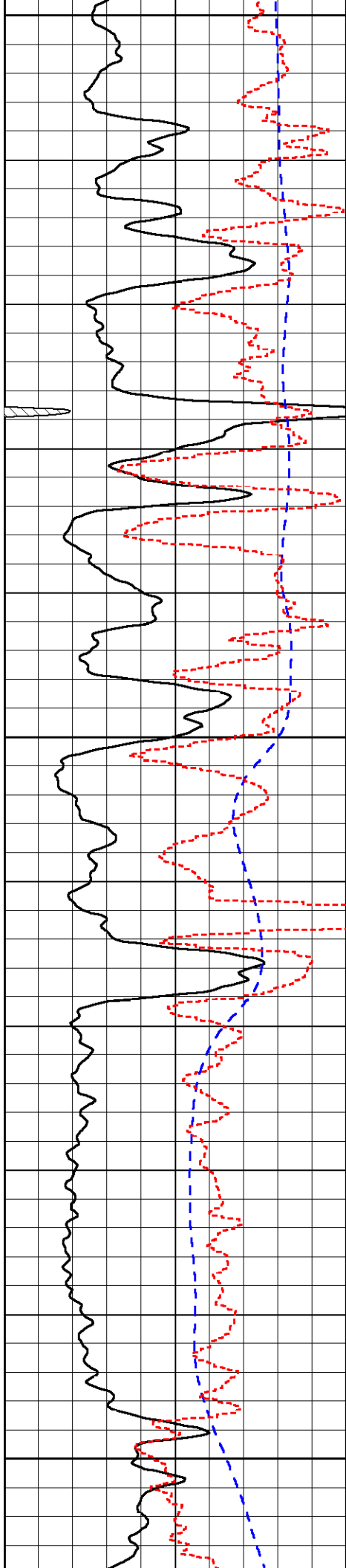
LSPD
(ft/min)



3250



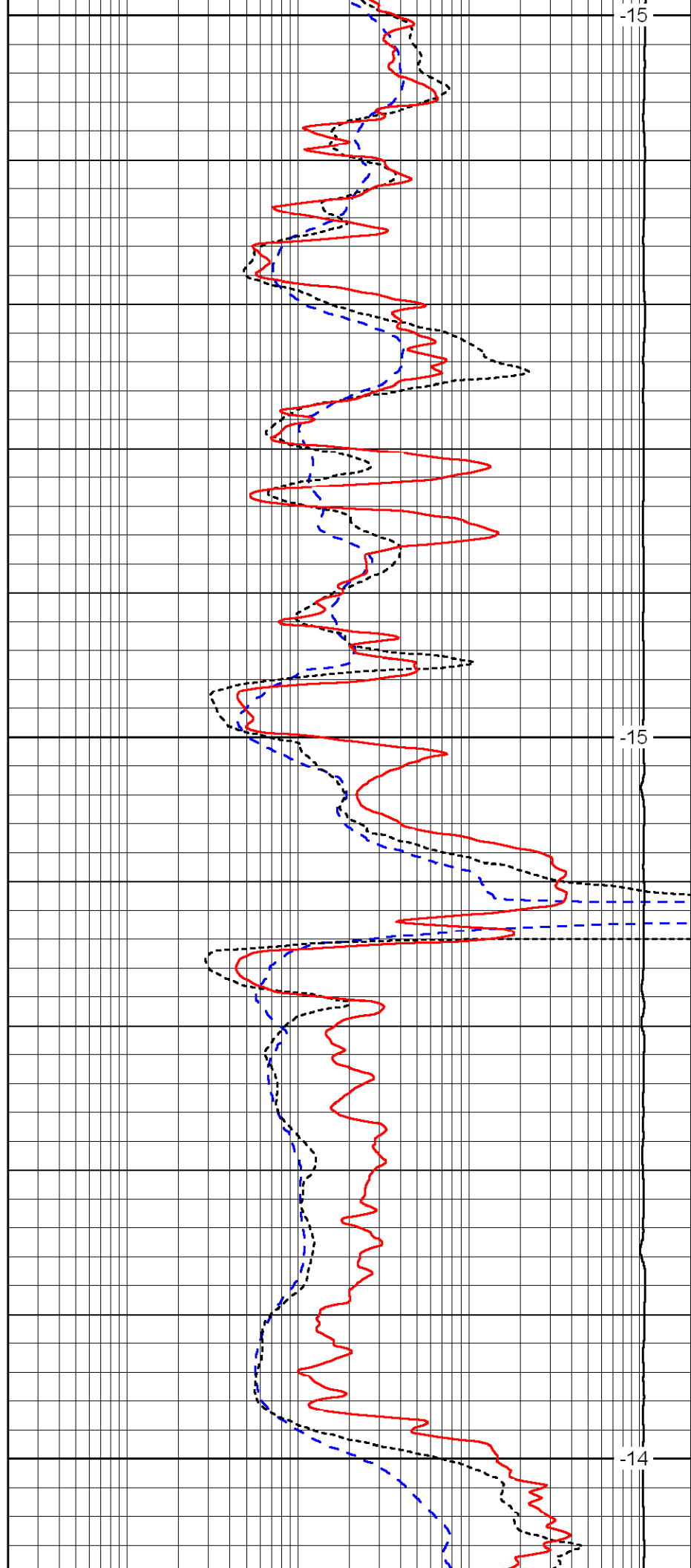
15



3300

3350

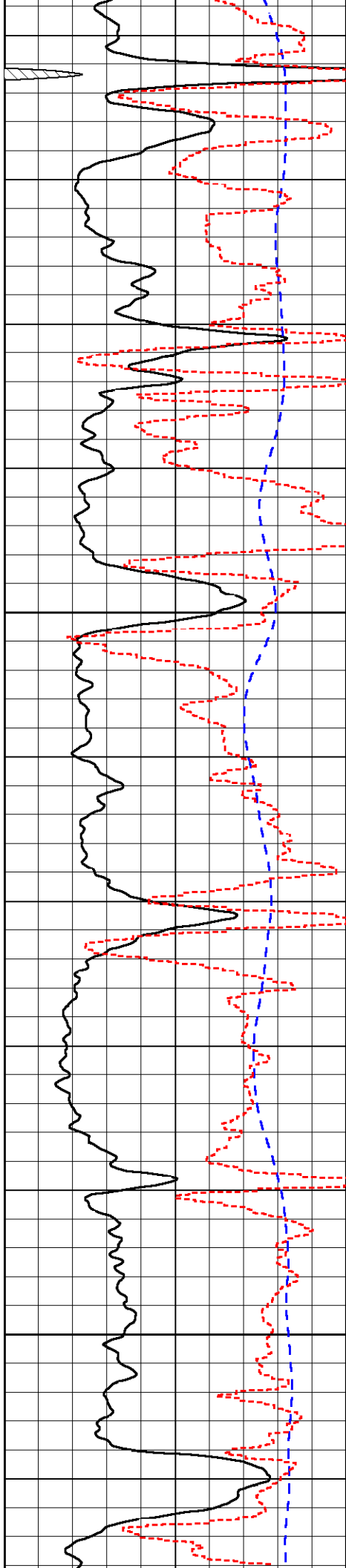
3400



-15

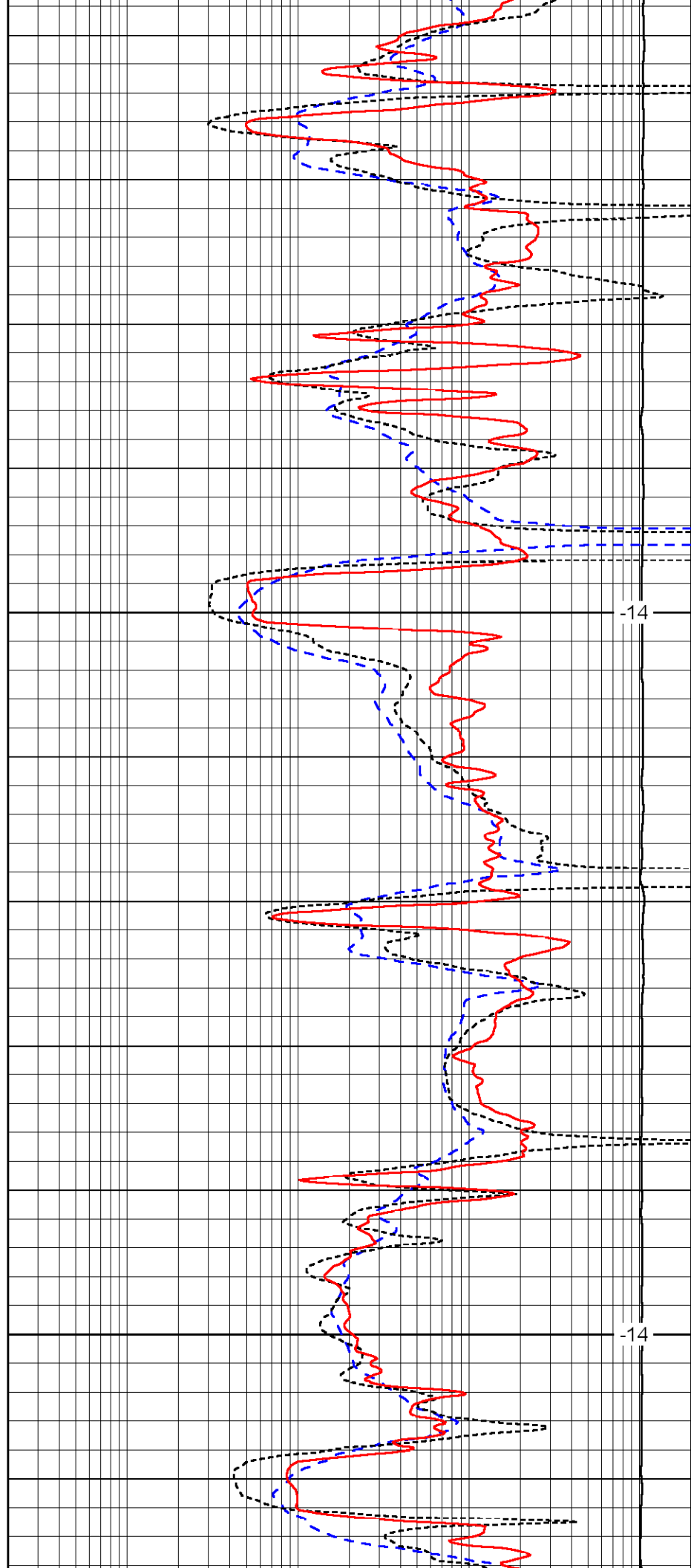
-15

-14



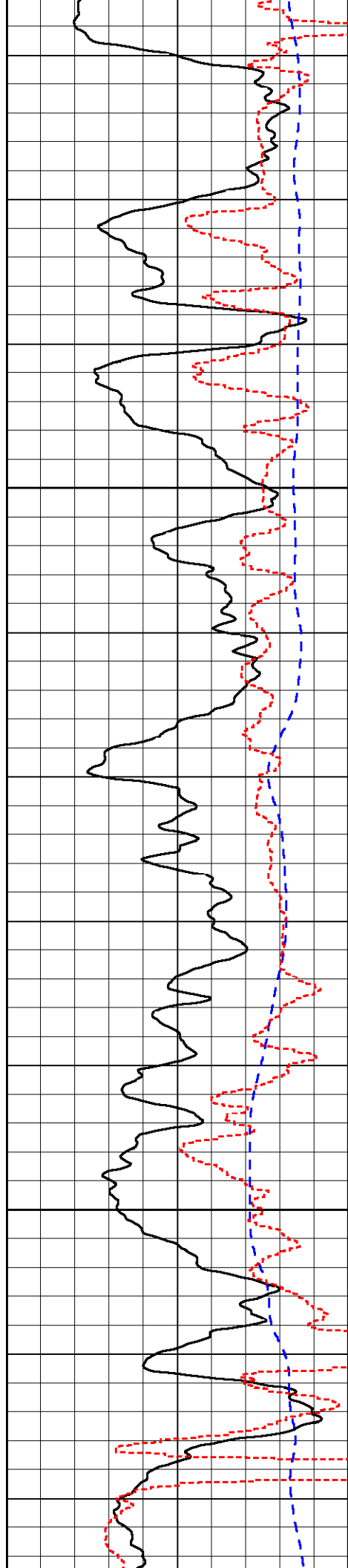
3450

3500



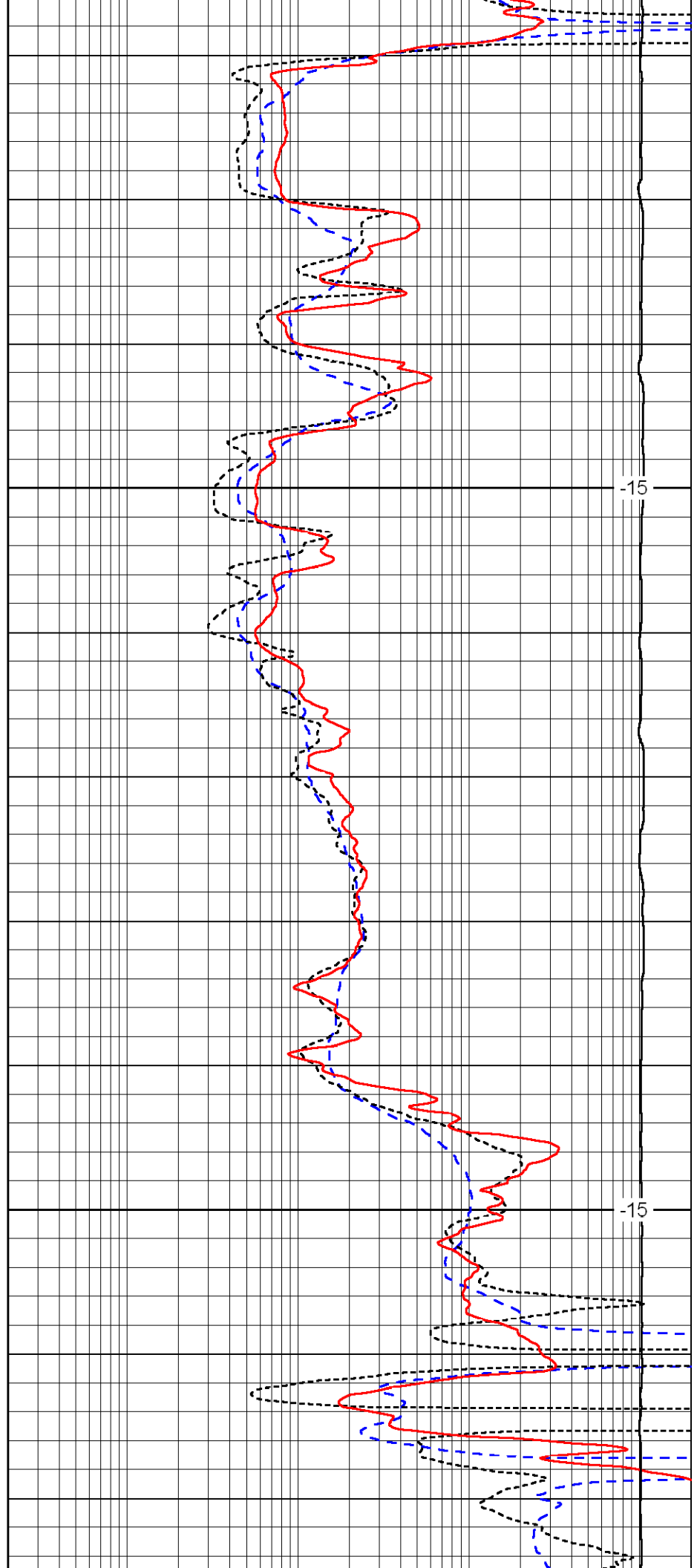
-14

-14



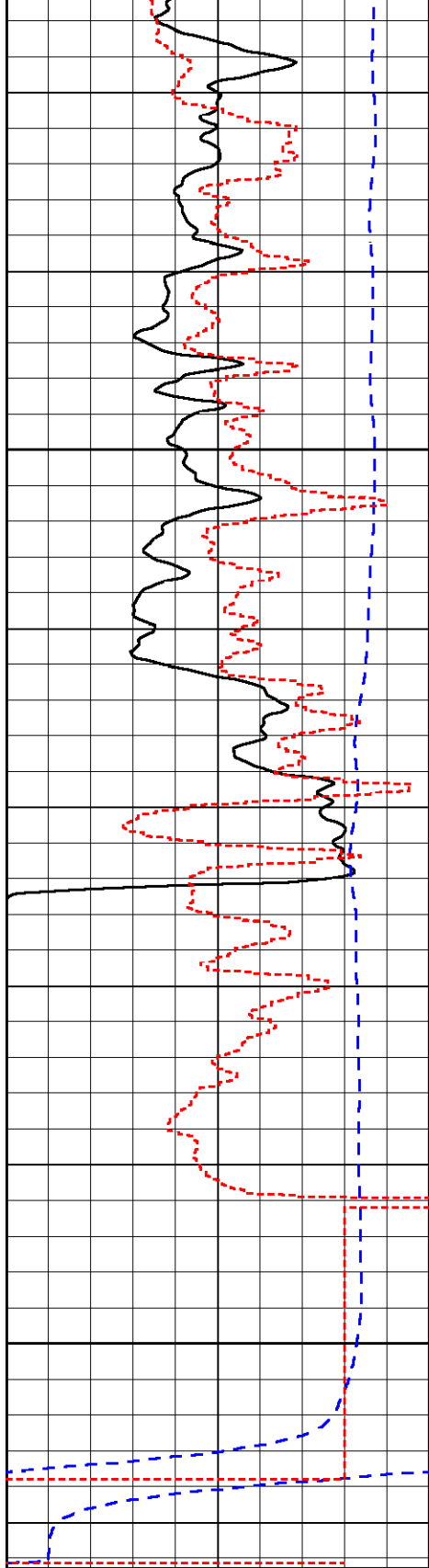
3550

3600



-15

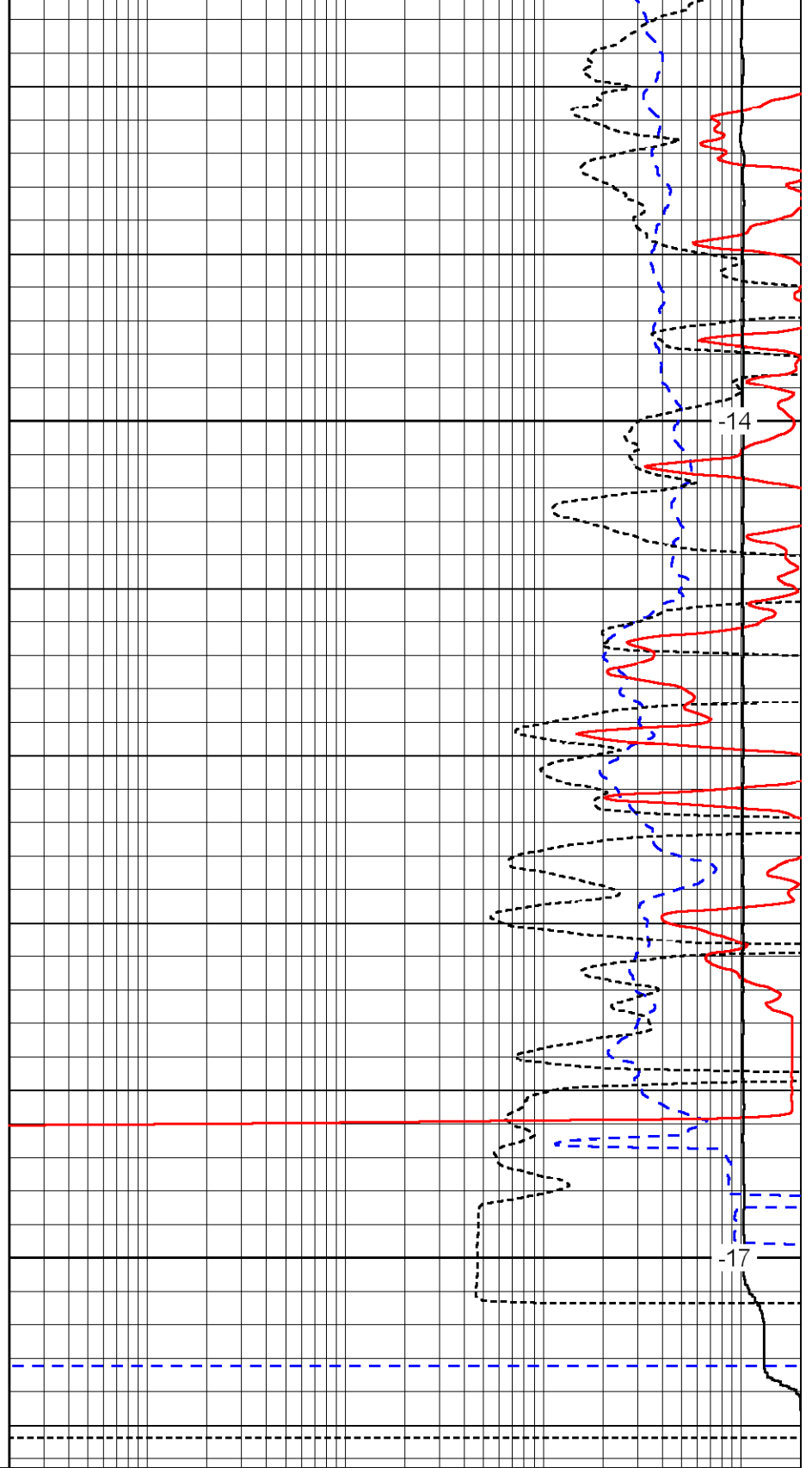
-15



3650

3700

0	Gamma Ray	150
-200	SP (MV)	0
-160	Rxo / Rt	40



-14

-17

0.2	Deep Resistivity (Ohm-m)	2000
0.2	Medium Resistivity (Ohm-m)	2000
0.2	Shallow Resistivity (Ohm-m)	2000
15000	Line Tension (lb)	0

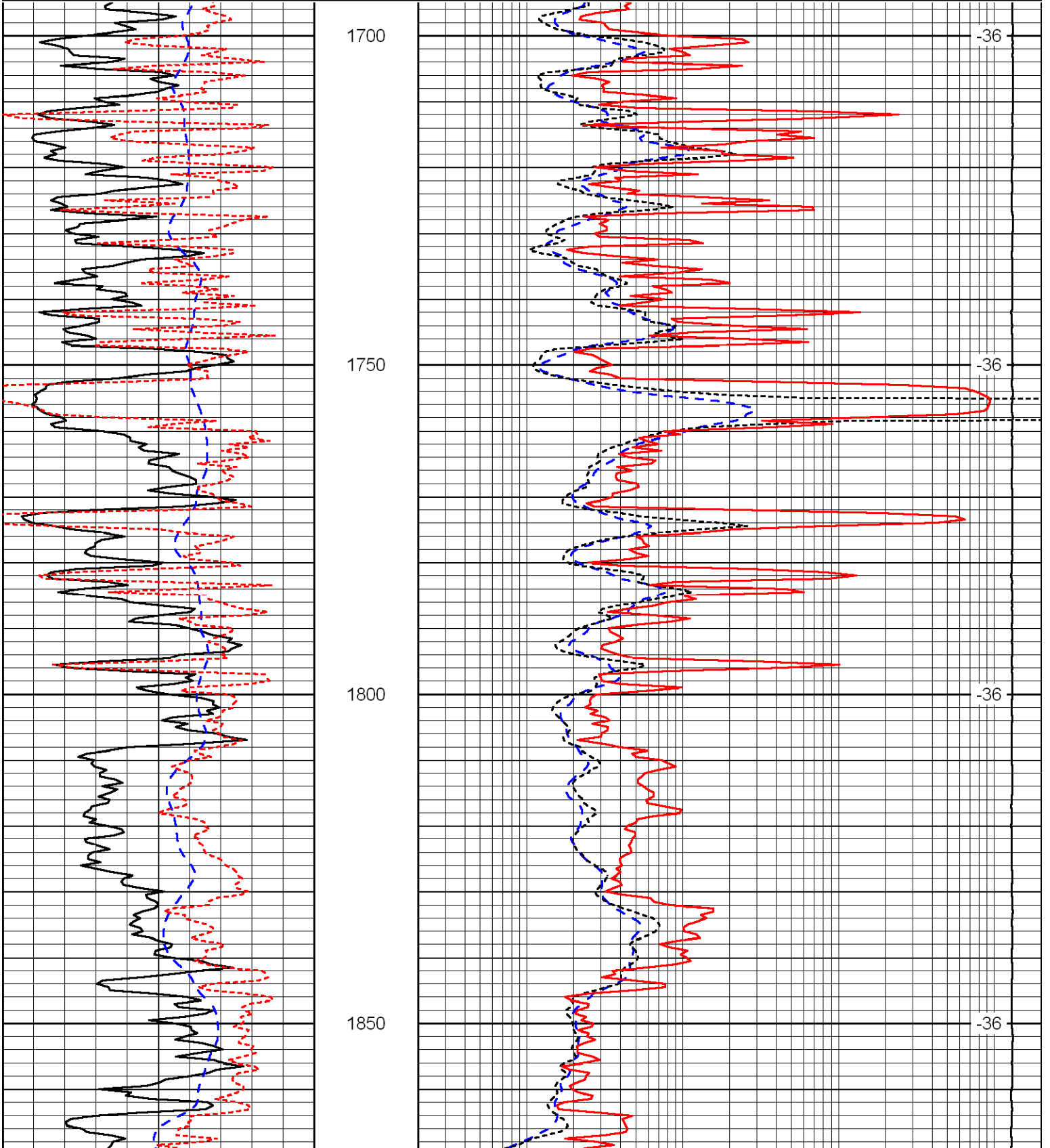
LSPD
(ft/min)

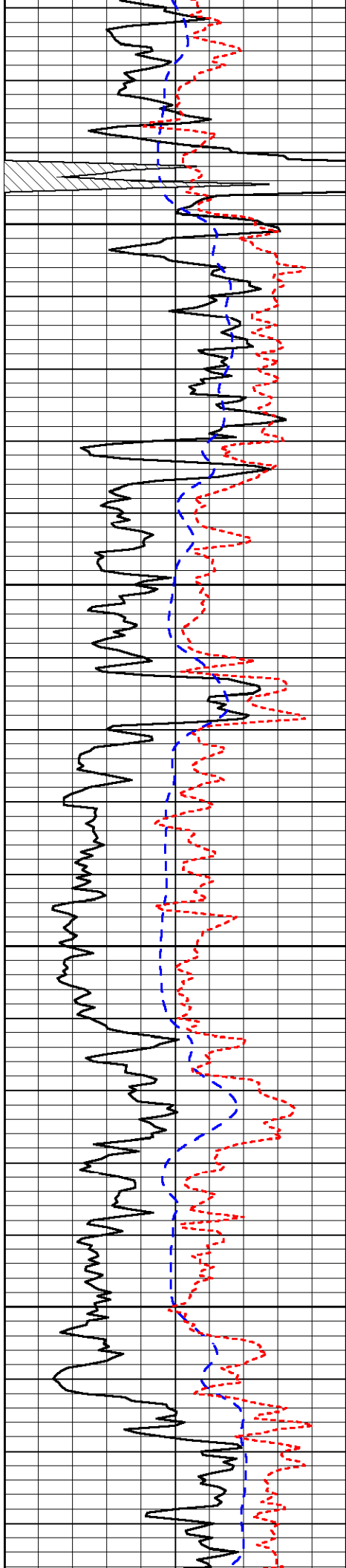
Dataset Pathname: d1/rig21
 Presentation Format: dil
 Dataset Creation: Tue Sep 01 23:02:22 2009
 Charted by: Depth in Feet scaled 1:240

0	Gamma Ray	150
-200	SP (MV)	0
-160	Rxo / Rt	40

0.2	Deep Resistivity (Ohm-m)	2000
0.2	Medium Resistivity (Ohm-m)	2000
0.2	Shallow Resistivity (Ohm-m)	2000
15000	Line Tension (lb)	0

LSPD
(ft/min)



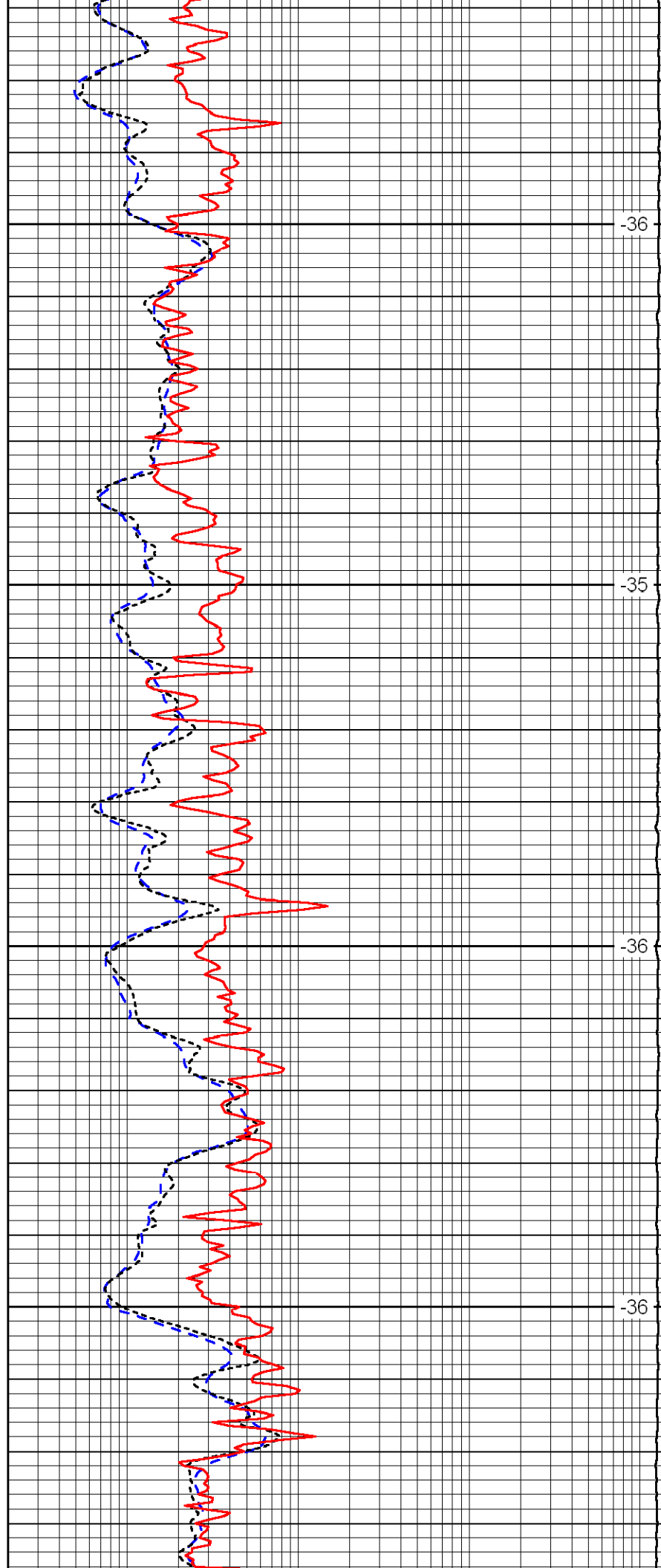


1900

1950

2000

2050

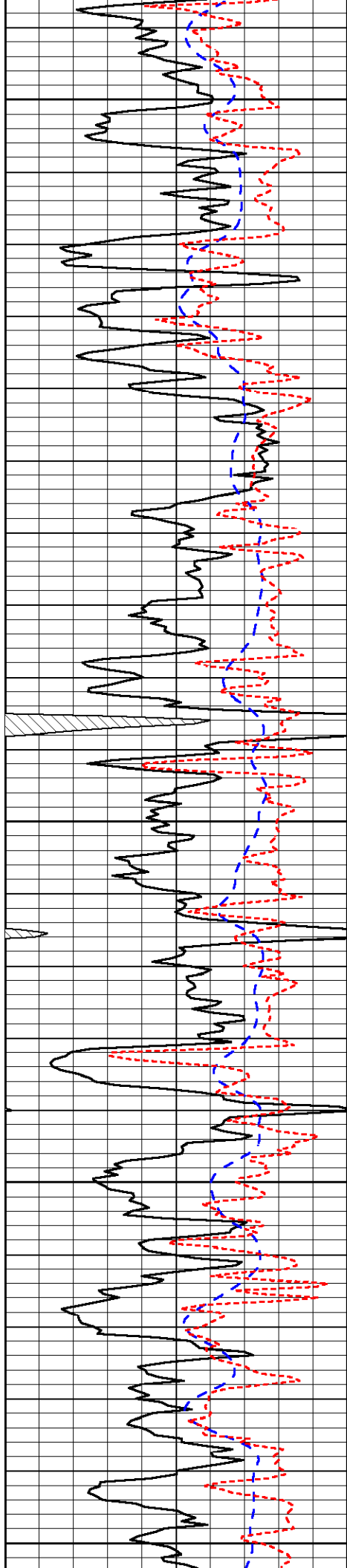


-36

-35

-36

-36



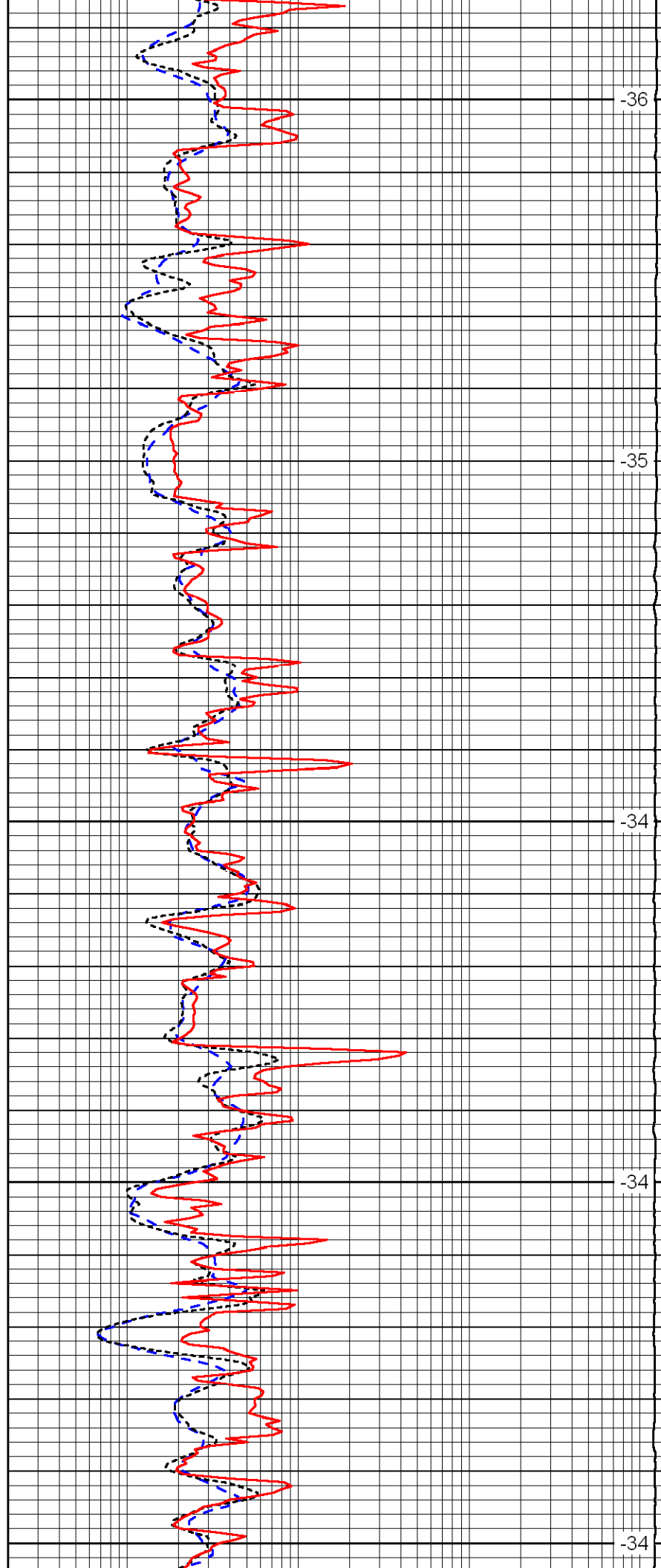
2100

2150

2200

2250

2300



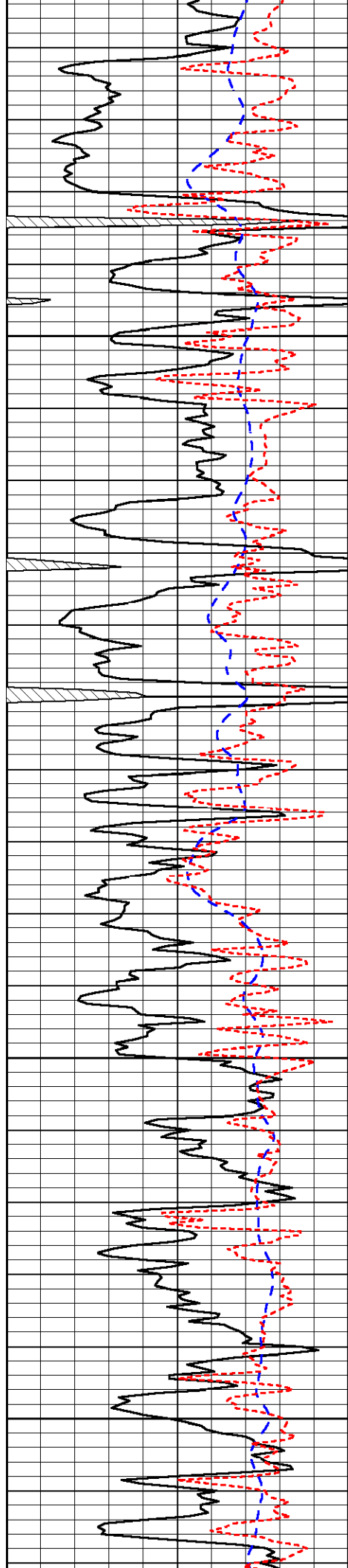
-36

-35

-34

-34

-34

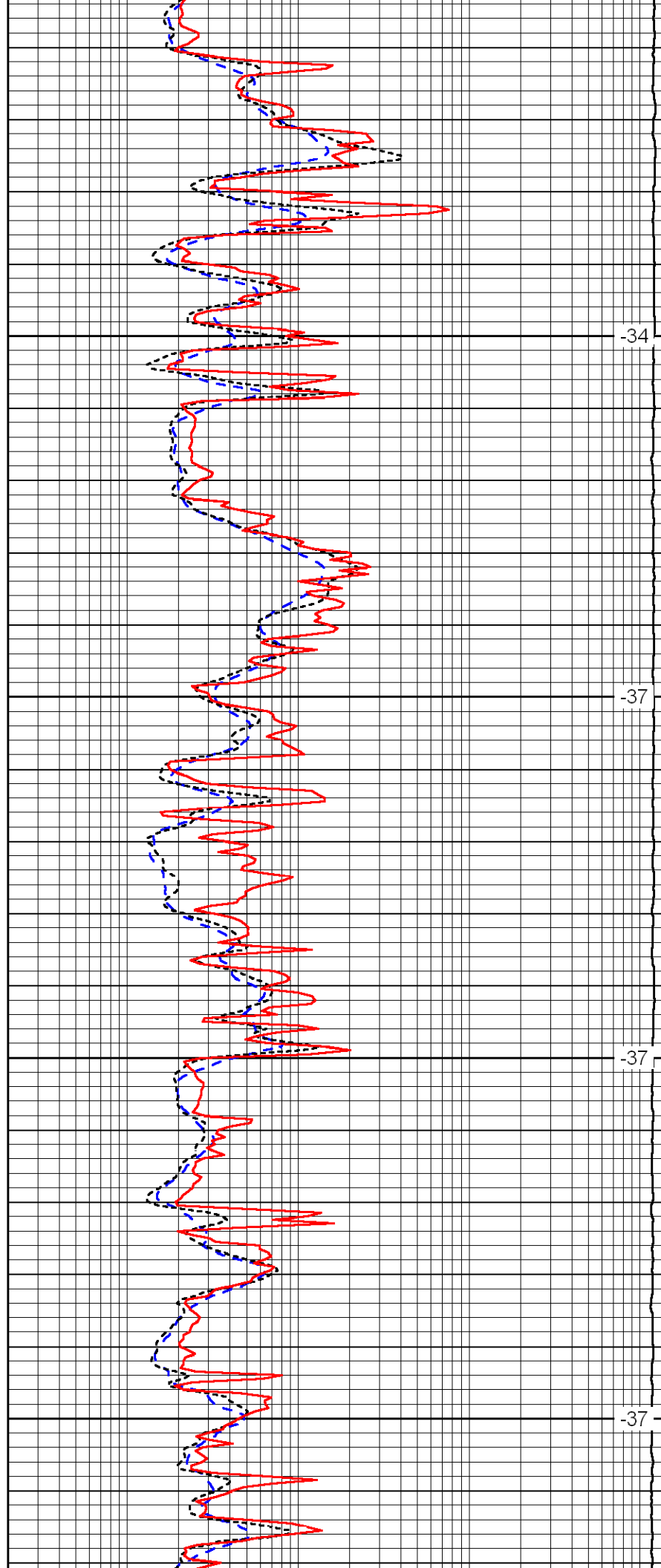


2350

2400

2450

2500

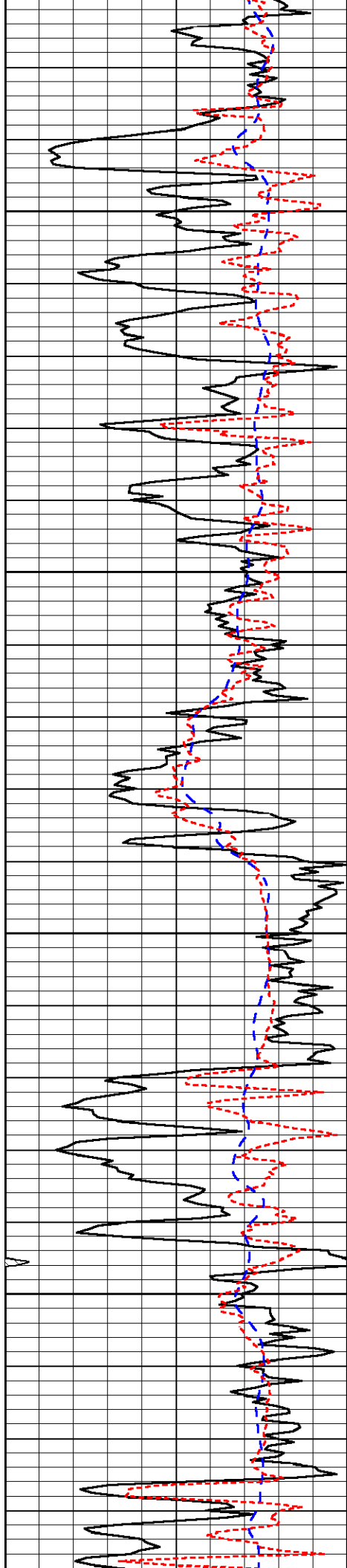


-34

-37

-37

-37

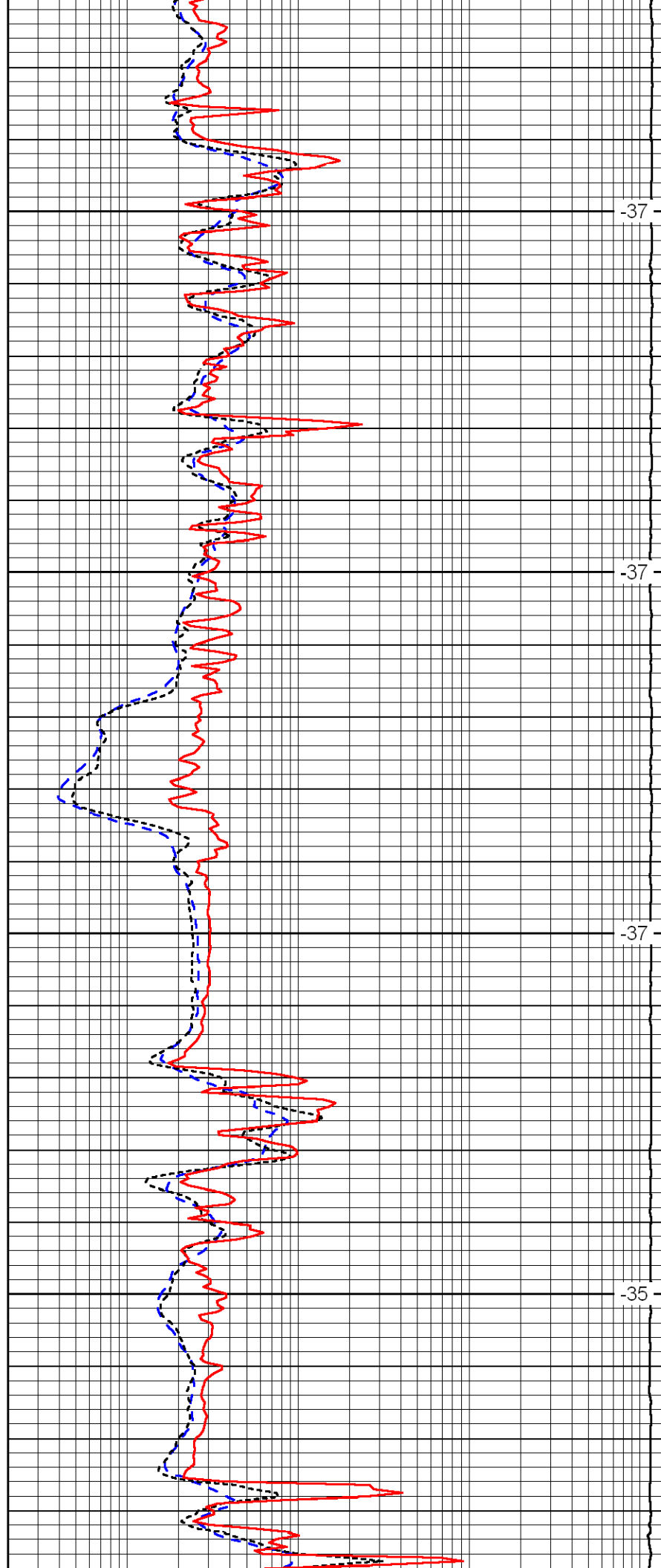


2550

2600

2650

2700

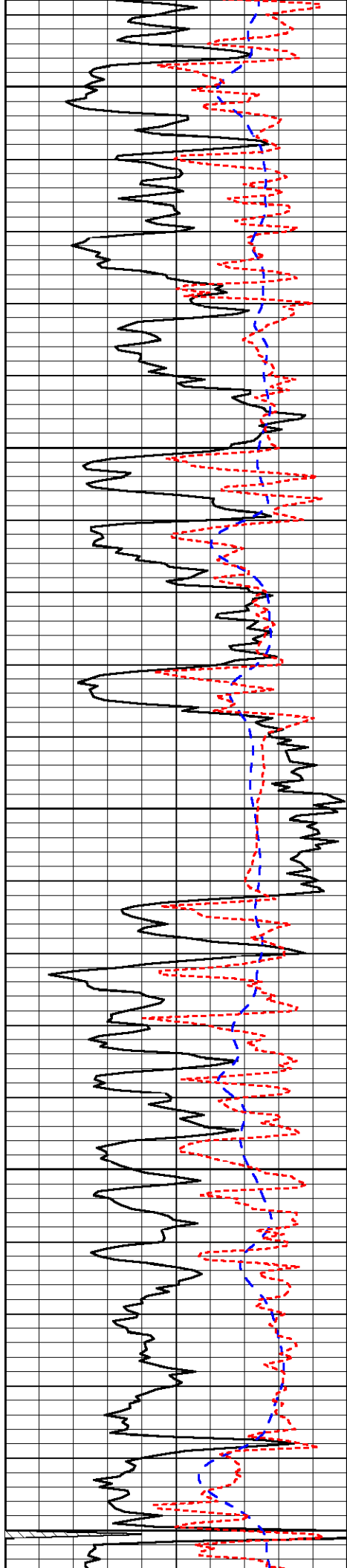


-37

-37

-37

-35



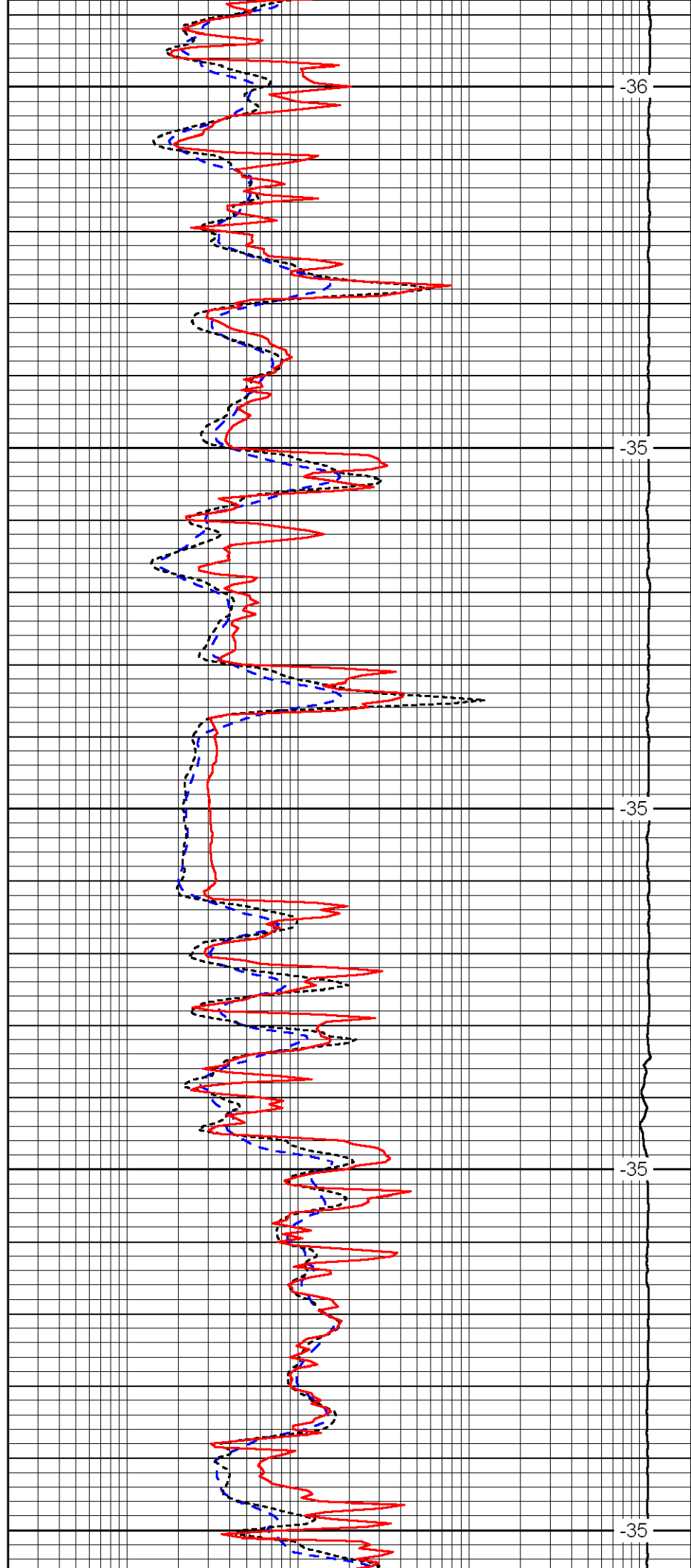
2750

2800

2850

2900

2950



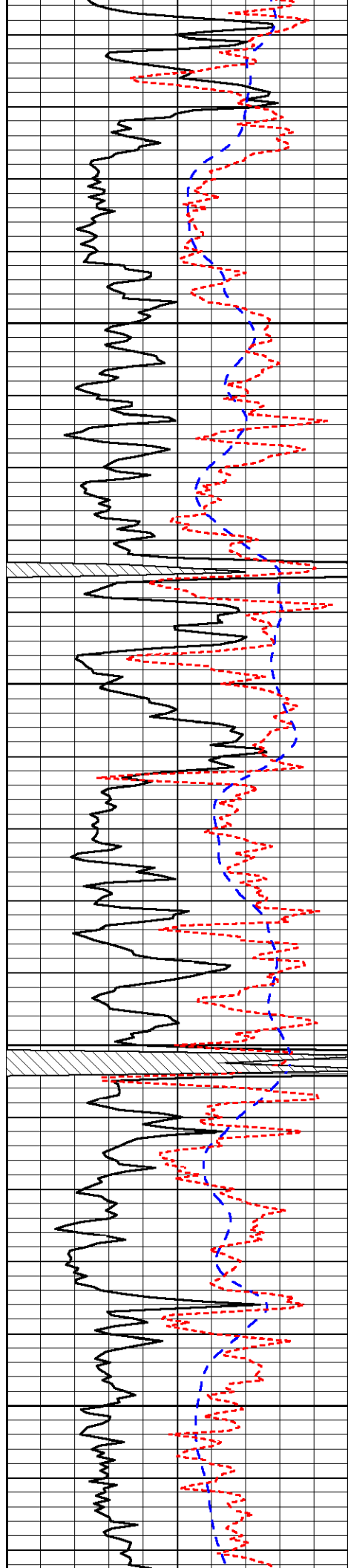
-36

-35

-35

-35

-35

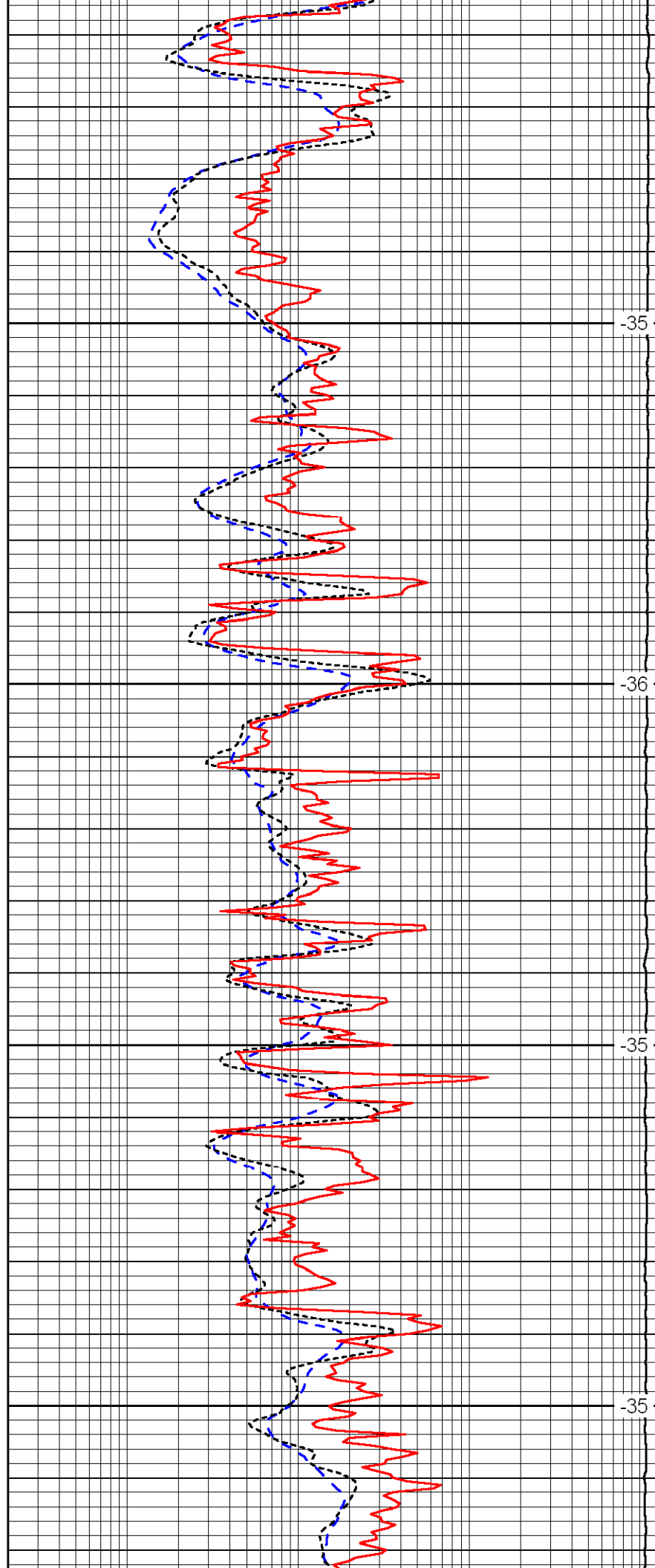


3000

3050

3100

3150

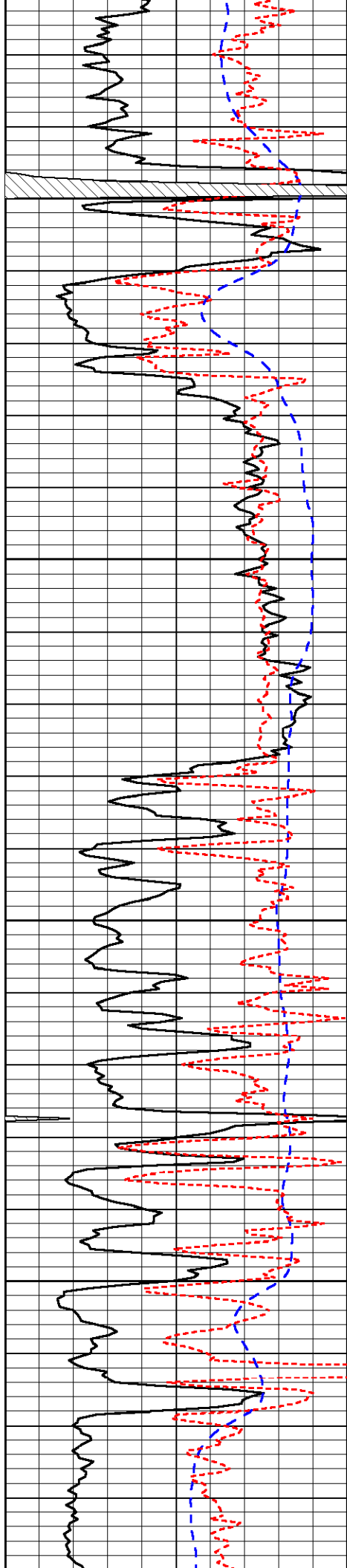


-35

-36

-35

-35

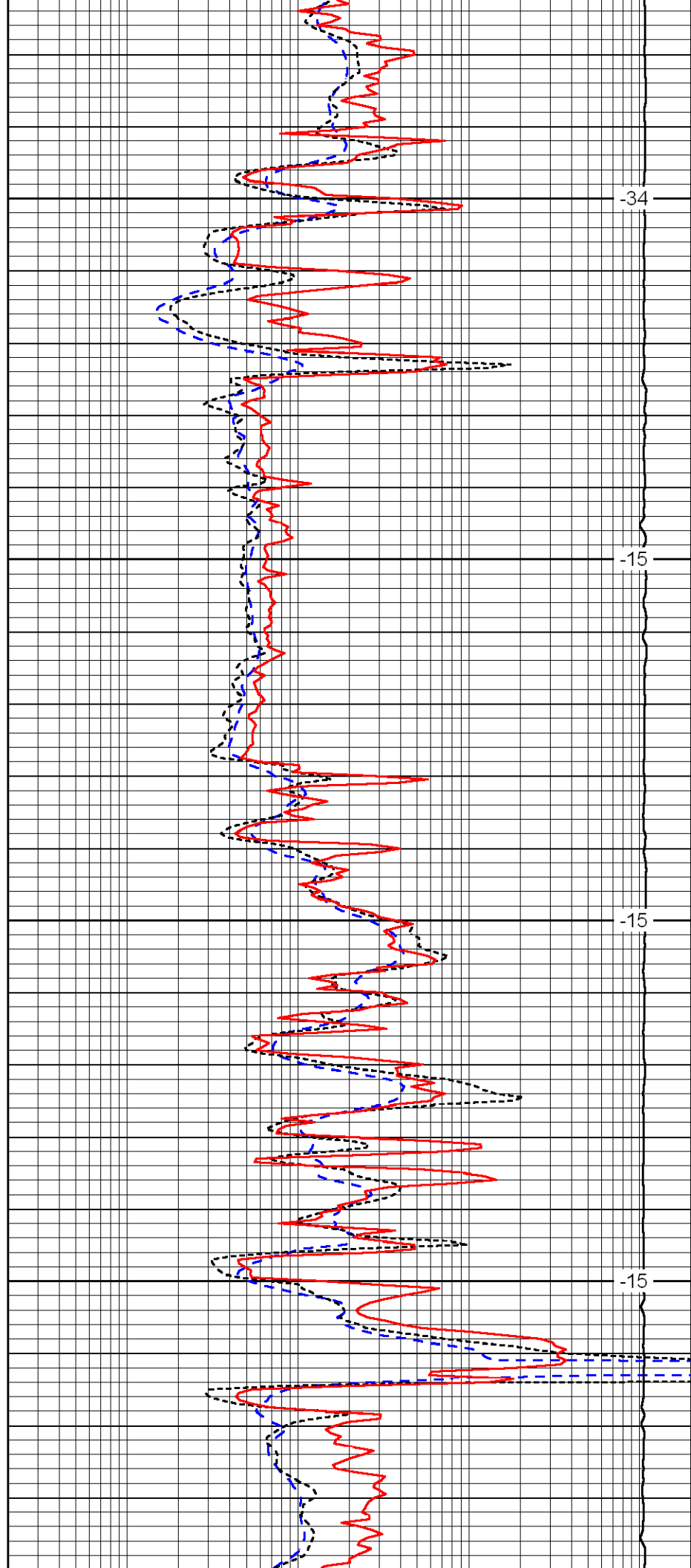


3200

3250

3300

3350

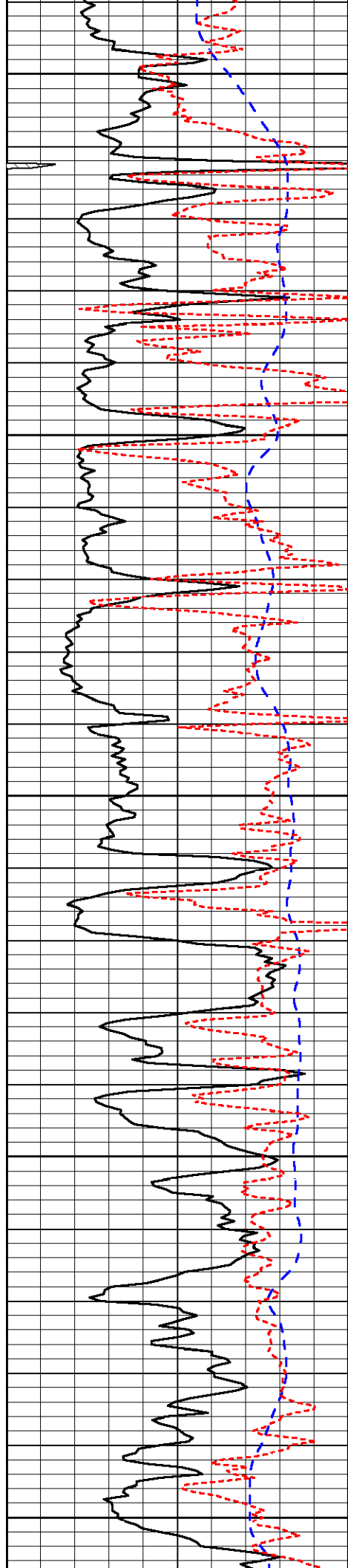


-34

-15

-15

-15



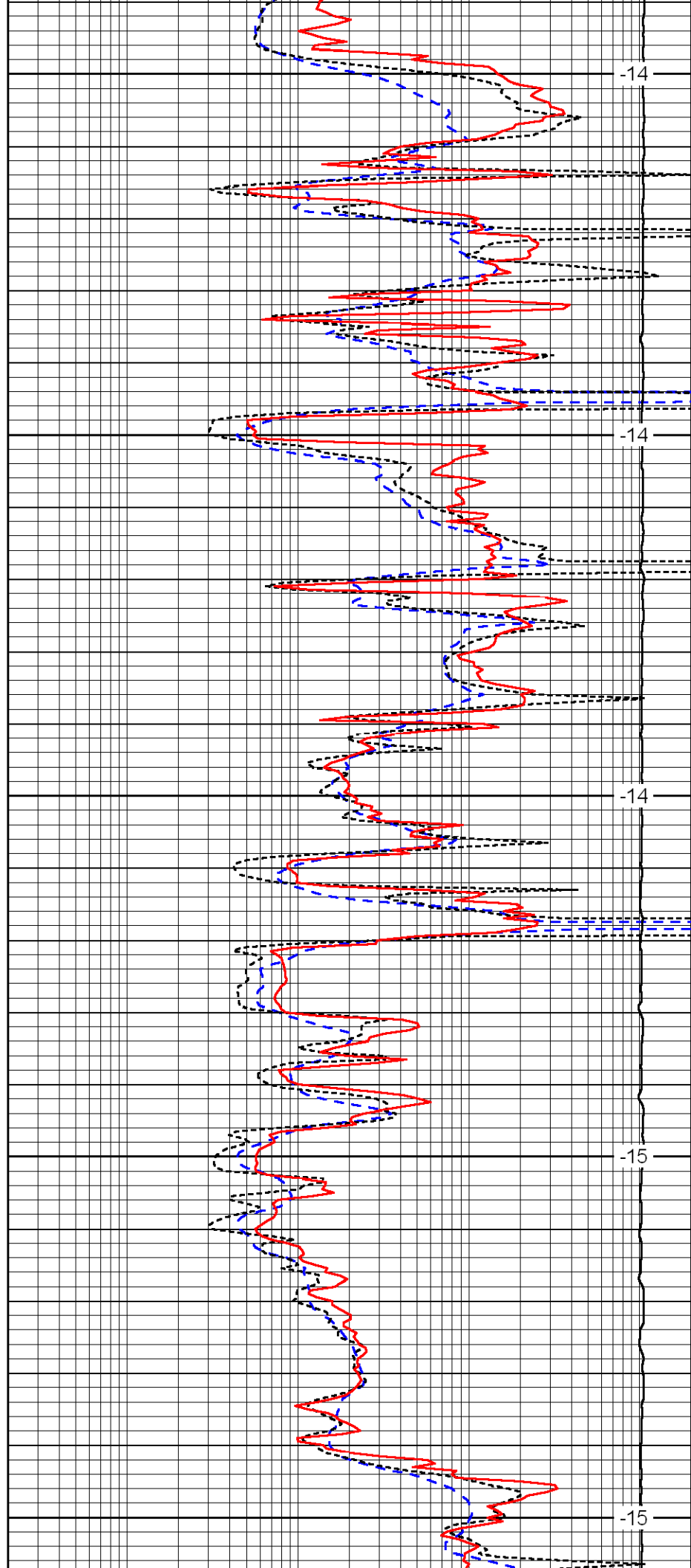
3400

3450

3500

3550

3600



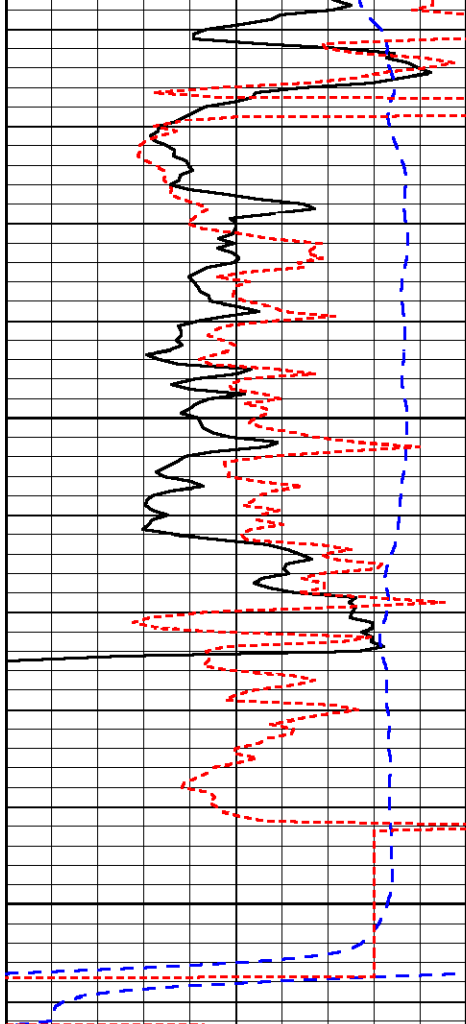
-14

-14

-14

-15

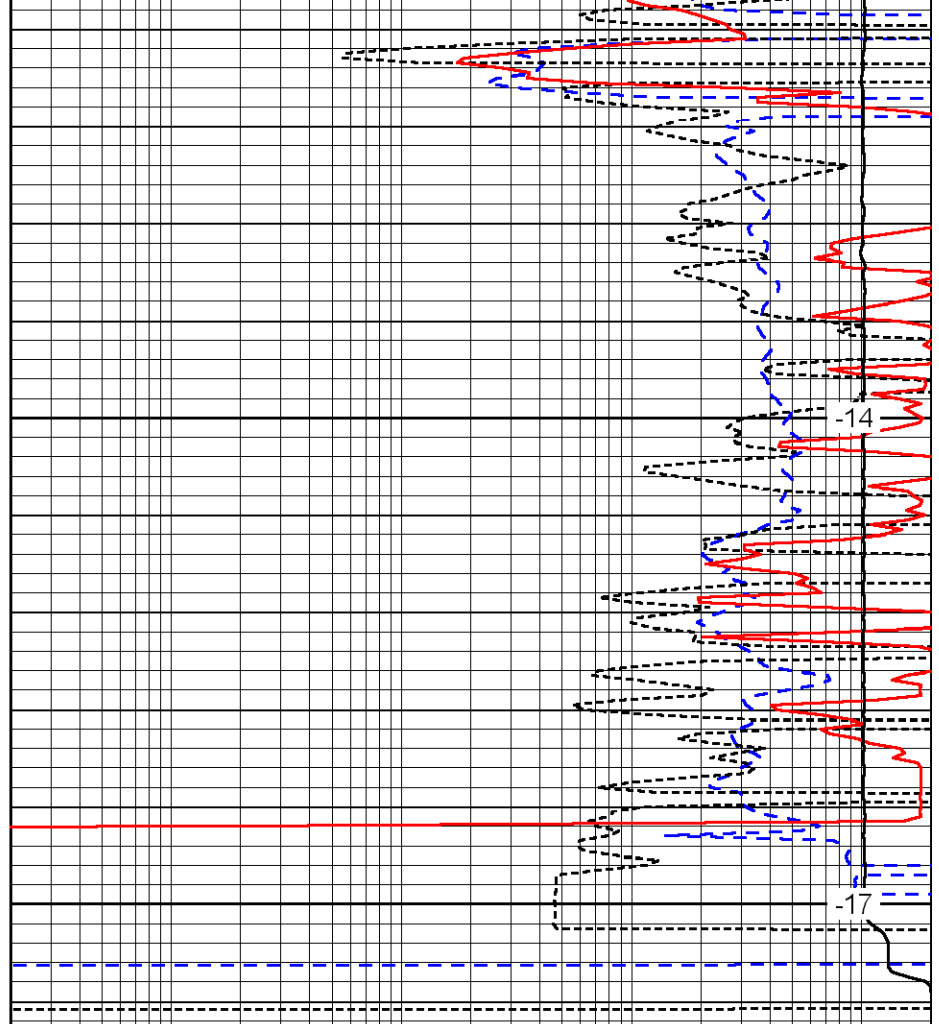
-15



3650

3700

0	Gamma Ray	150
-200	SP (MV)	0
-160	Rxo / Rt	40



-14

-17

0.2	Deep Resistivity (Ohm-m)	2000
0.2	Medium Resistivity (Ohm-m)	2000
0.2	Shallow Resistivity (Ohm-m)	2000
15000	Line Tension (lb)	0

LSPD
(ft/min)