



ALL PRESENTATIONS AS PER CUSTOMER REQUEST  
 GRT, CNT, LDT, AND PIT RUN IN COMBINATION.  
 CALIPERS ORIENTED ON X-Y AXIS.  
 2.71 G/CC USED TO CALCULATED POROSITY.  
 ANNULAR HOLE VOLUME CALCULATED UISING 2.875" PRODUCTION CASING.

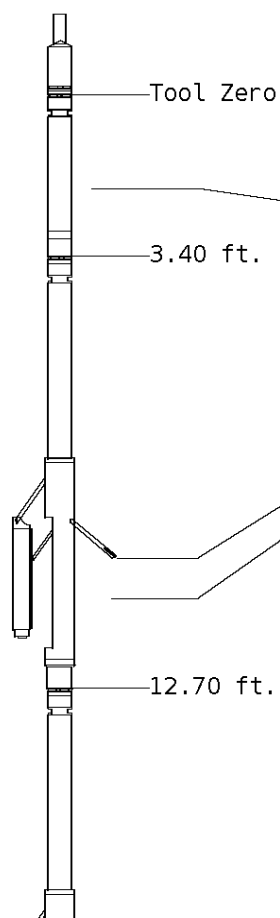
GRT: GRP.  
 CNT: PHIN, CLCNIN  
 LDT: PORL, LCORN, PECLN, LDENN, PORLLS, CLLDIN.  
 PIT: ILD, ILM, SPU, SFLAEC

OPERATORS:

M.BURKE  
 M.GARNER

### Tool String Schematic

**Total Tool Length** - 43.49 ft.  
**Maximum Outside diameter** - 4.80 in.  
**Net Weight in Air** - 743.00 lbs.



**Tool:** GRT-B      **Length:** 3.40 ft.    **O.D.** 3.60 in.  
 Gamma Ray Controller

**Sonde ID** :GRT-BA-14

Measure Point	Tool Offset	Stack Offset	Bottom Offset
GRP	2.00	2.00	41.49

**Tool:** CNT-AA      **Length:** 9.30 ft.    **O.D.** 4.36 in.  
 Compensated Neutron A Pad on NDT-A

**Sonde ID** :NDT-AB-400

**Source ID** :N-1044

**Pad ID** :CNP-AA-116

Measure Point	Tool Offset	Stack Offset	Bottom Offset
CLCN	6.00	9.40	34.09
PHIN	6.80	10.20	33.29

**Tool:** LDT-DA      **Length:** 9.30 ft.    **O.D.** 4.80 in.  
 Litho Density D Pad on NDT-A

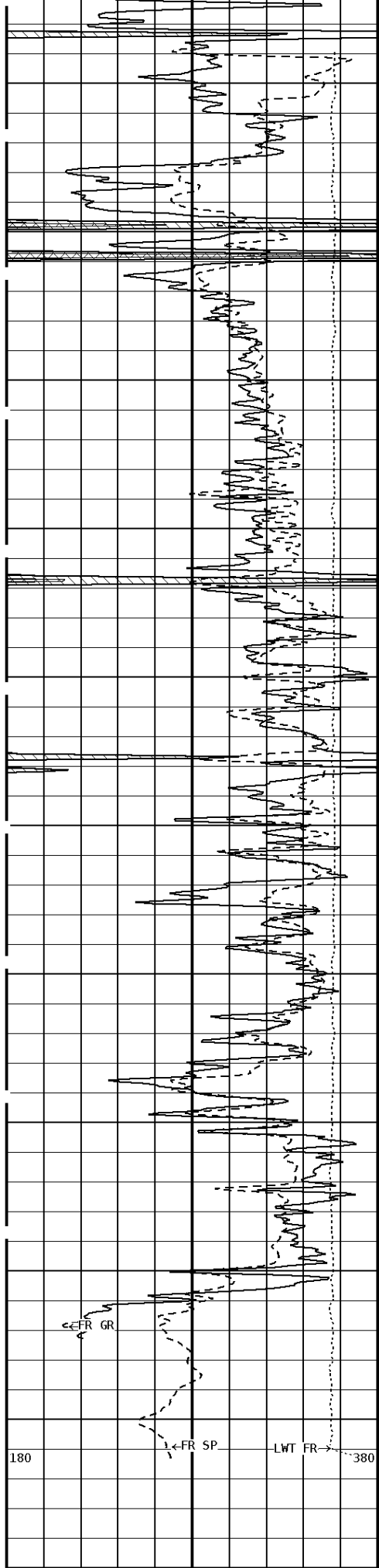
**Sonde ID** :PDT-GA-465

**Source ID** :CSV-587

**Pad ID** :LDT-DA-01

Measure Point	Tool Offset	Stack Offset	Bottom Offset
CLLD	6.00	18.70	24.79
PEL	7.00	19.70	23.79
PES	7.40	20.10	23.39





100

200

300

400

500

511

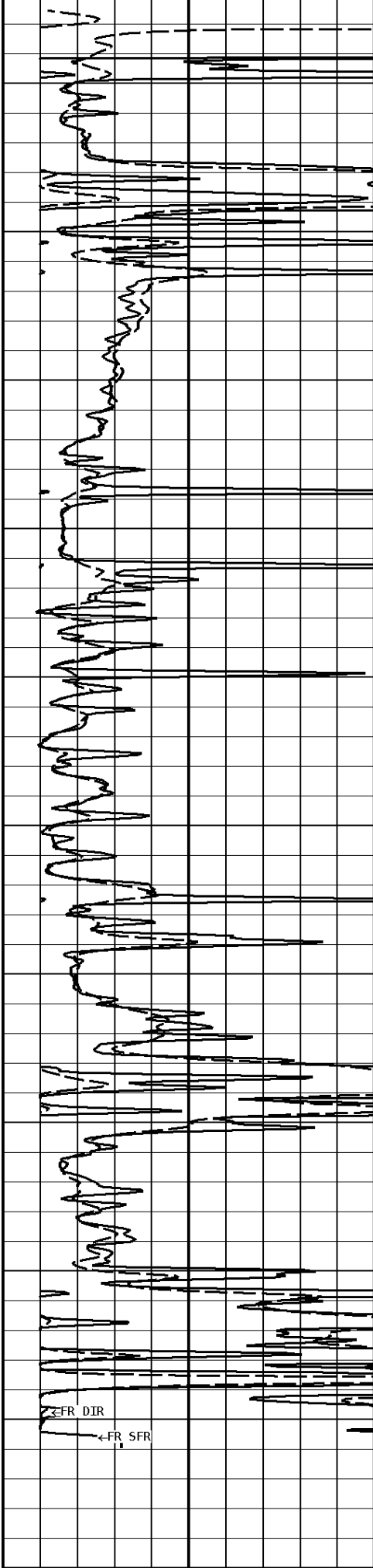
←FR GR

←FR SP

←LWT FR

180

380

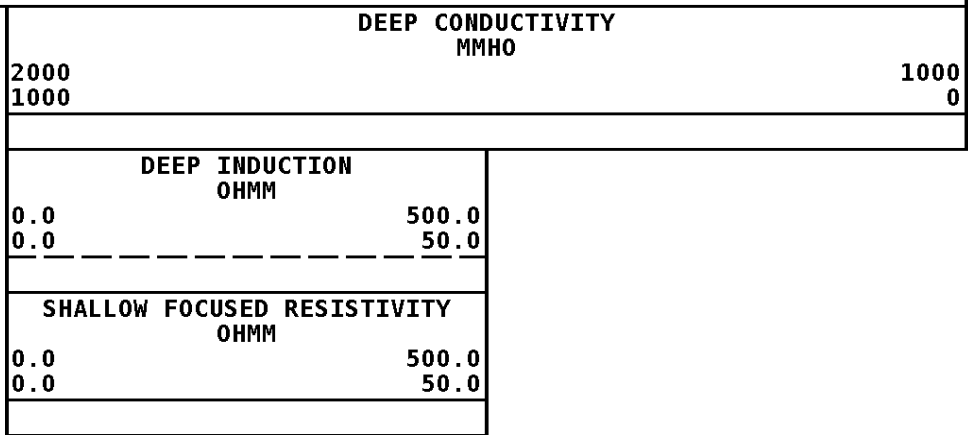
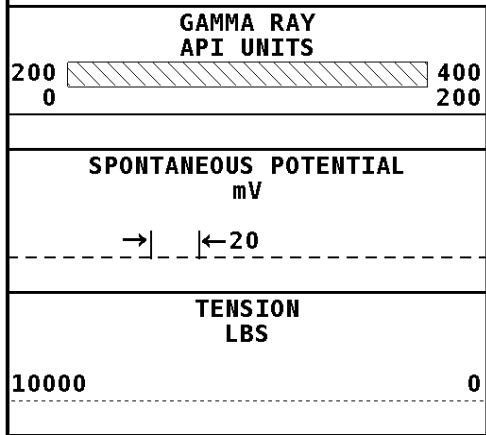


←FR DIR

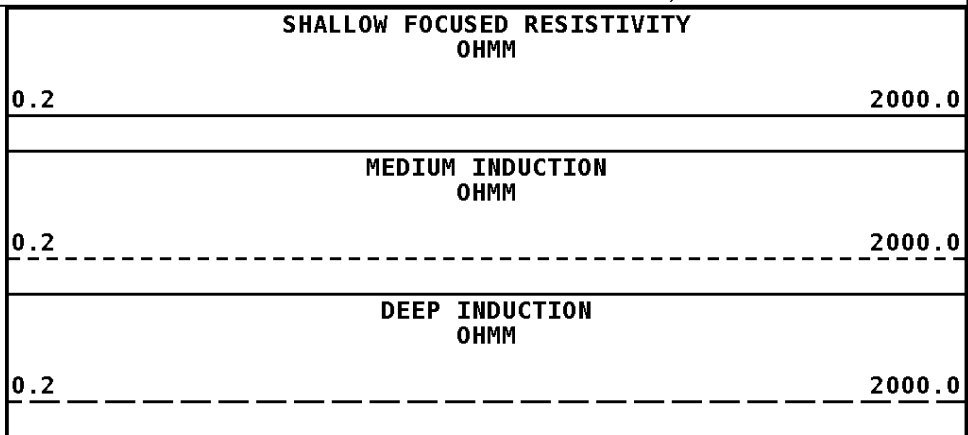
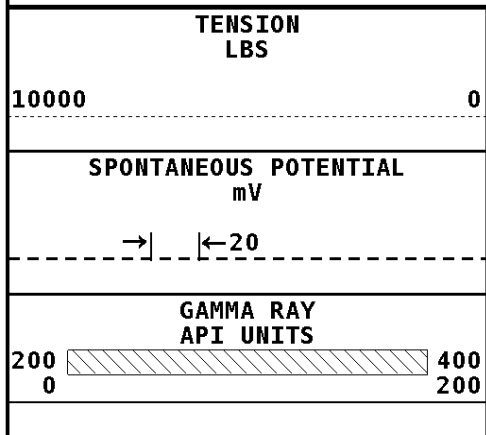
←FR SFR

DIC FR

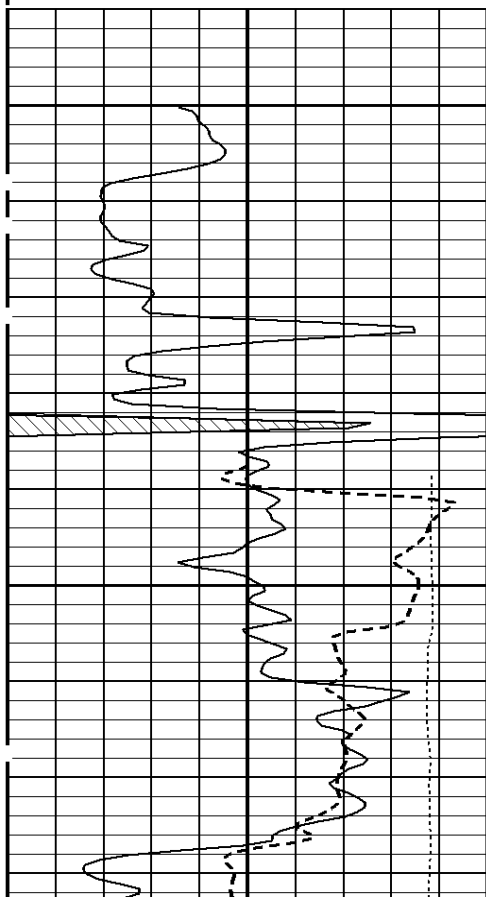
1:600 SECTION  
2 INCH



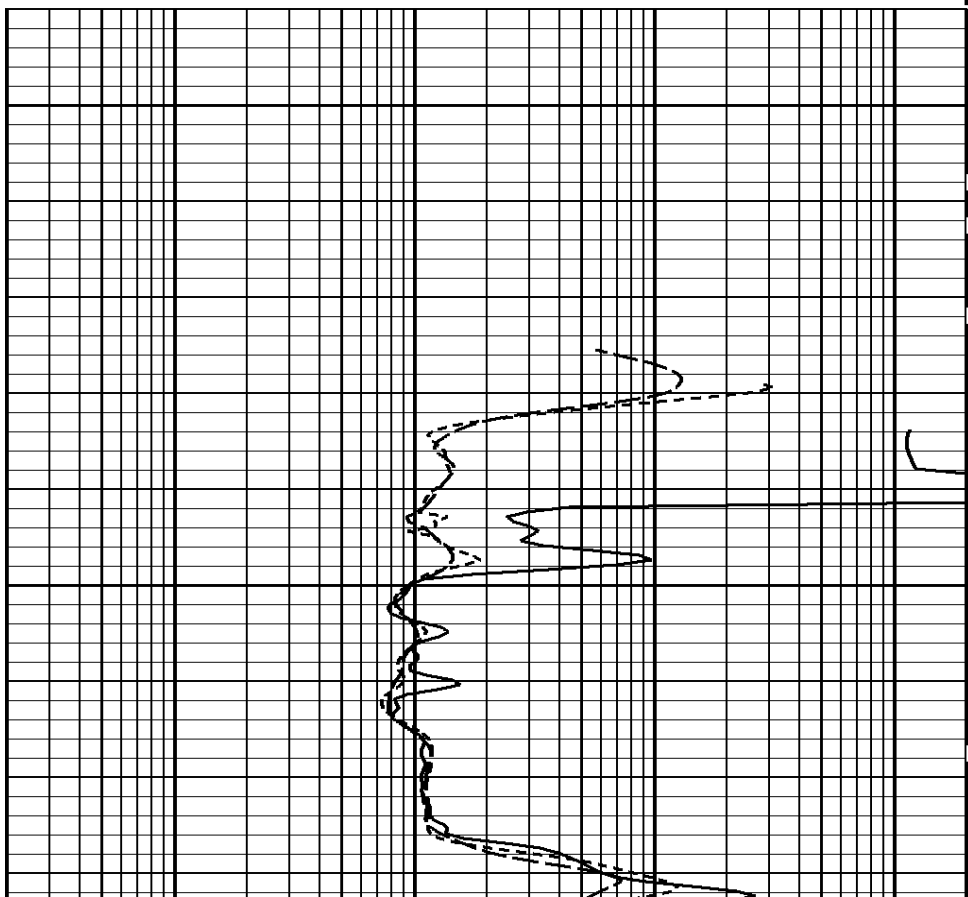
**Well File:** RFP\_GROSS 11-6A-2 OCT21\_STK **Scale:** 1:240  
**Segment:** V1.D1.S5 Reprocess of MAIN **Acquired:** 2011-10/21 10:52 3.2.0-10220  
**Reference:** 0 **Processed:** 2011-10/21 11:11 3.2.0-10220

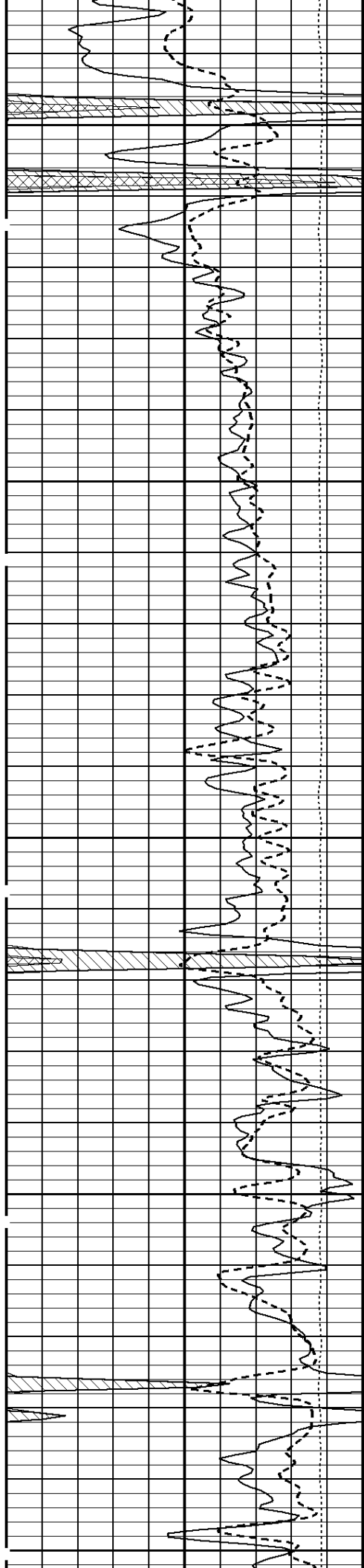


**1:240 MAIN SECTION**



000

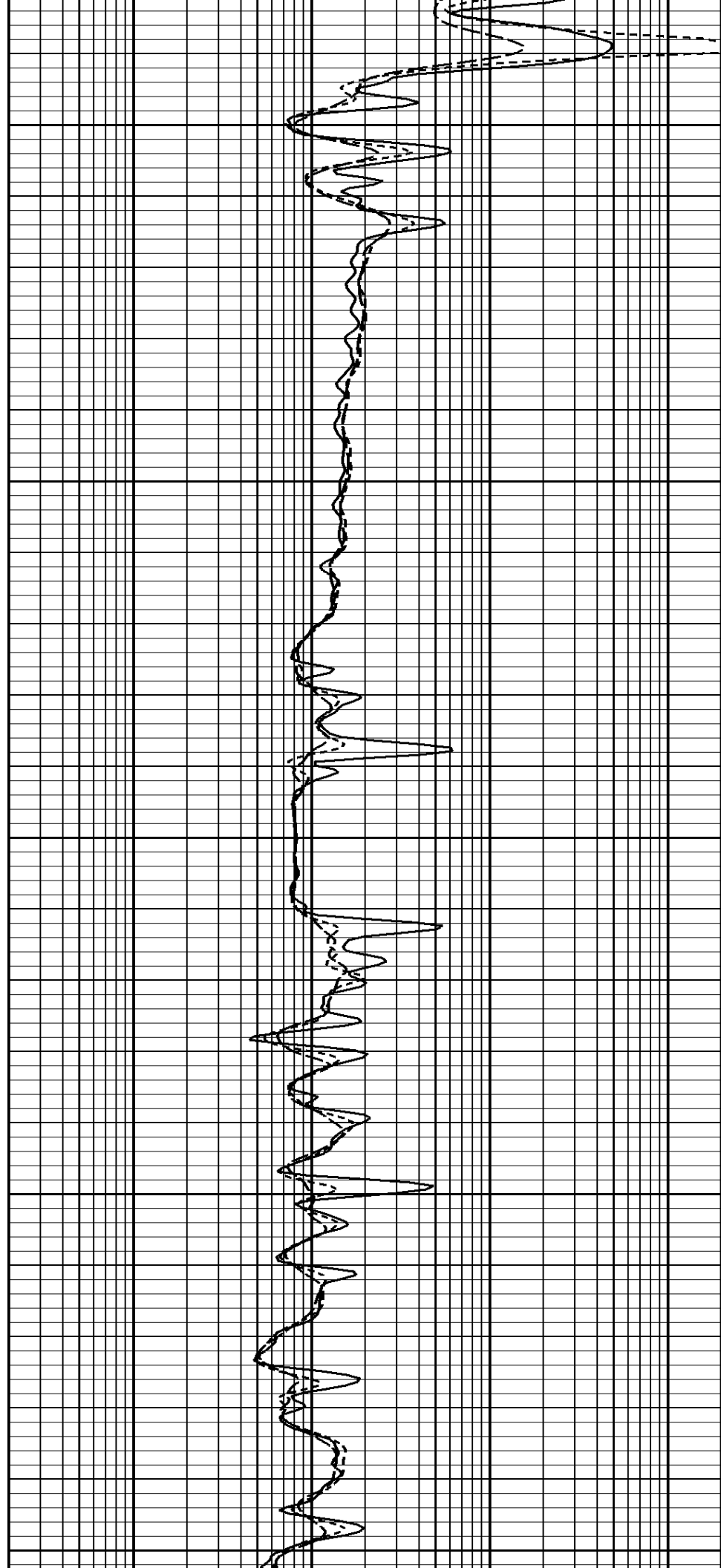


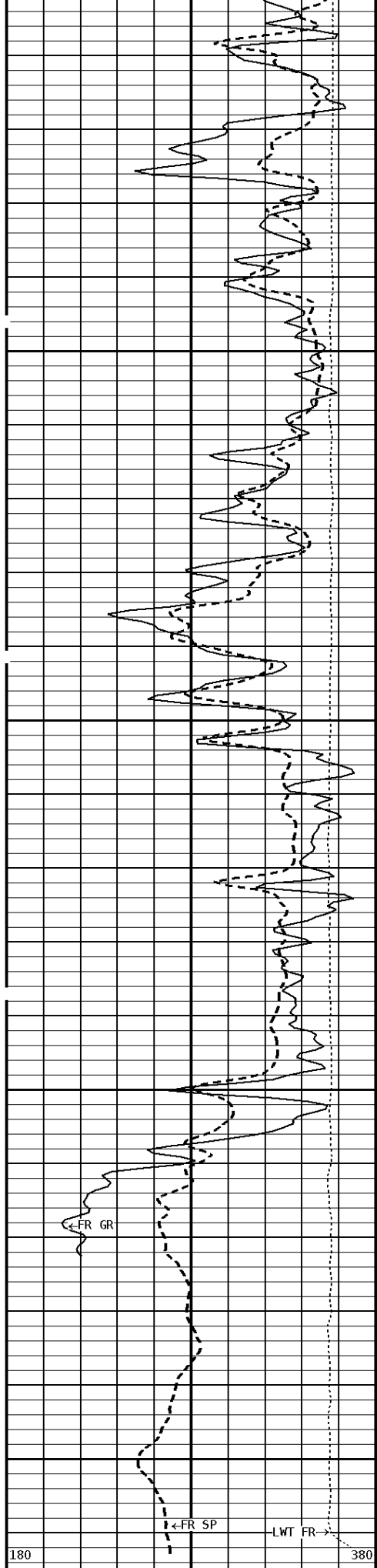


100

200

300

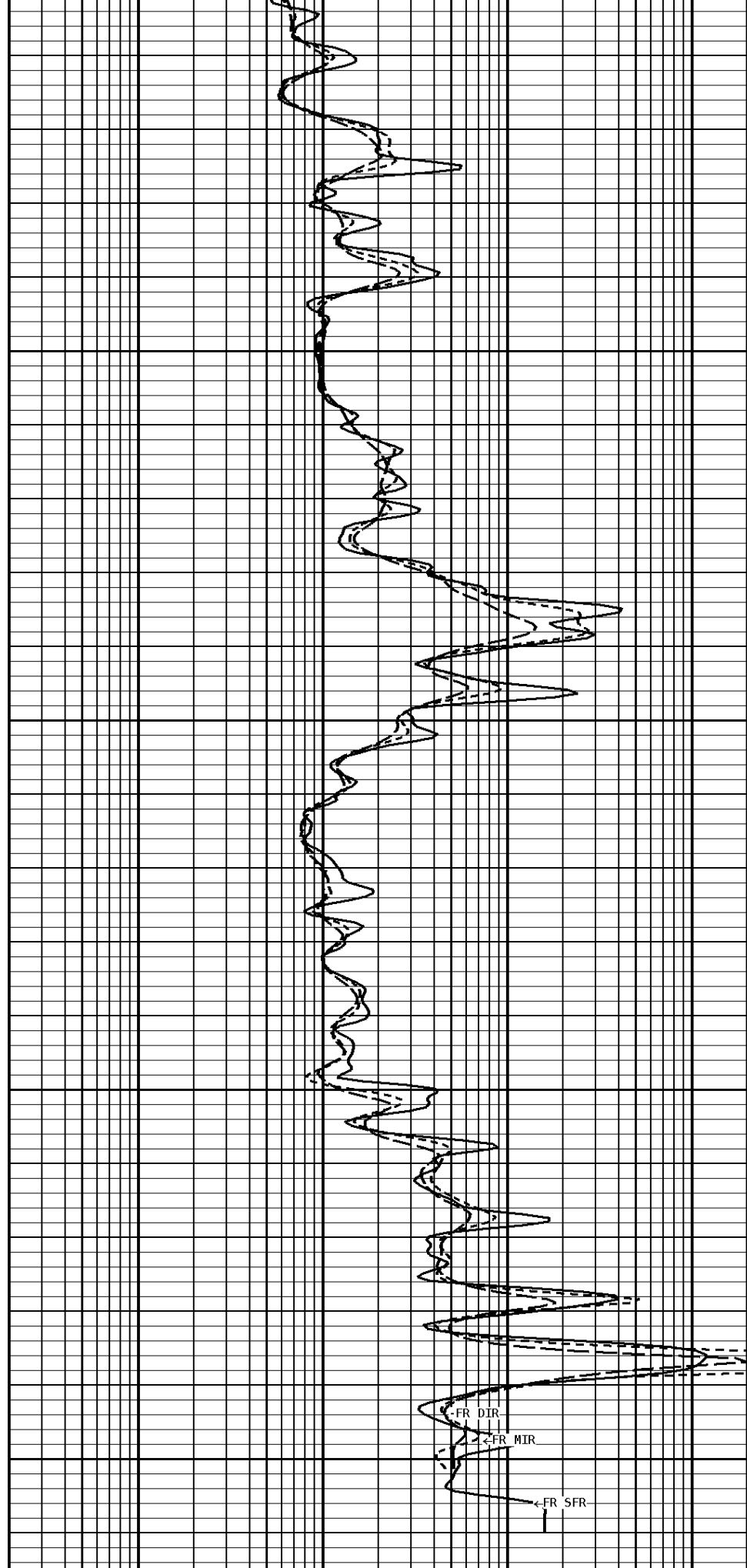




400

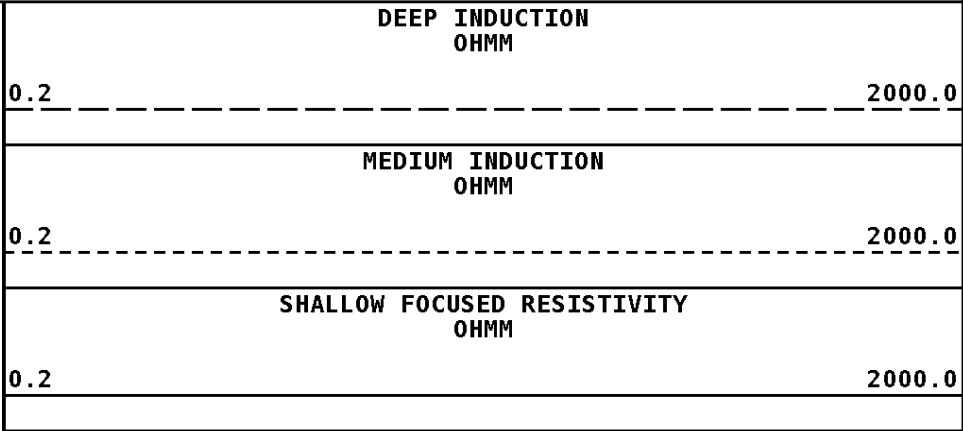
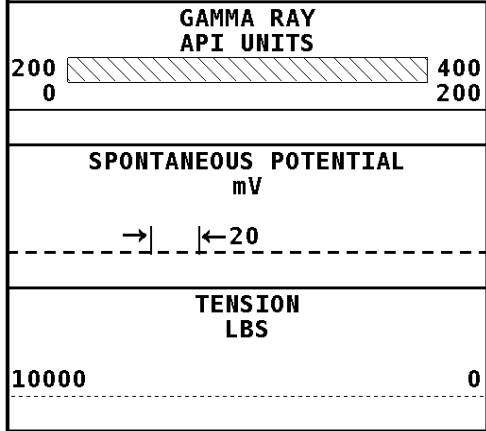
500

511



File #1.1.5

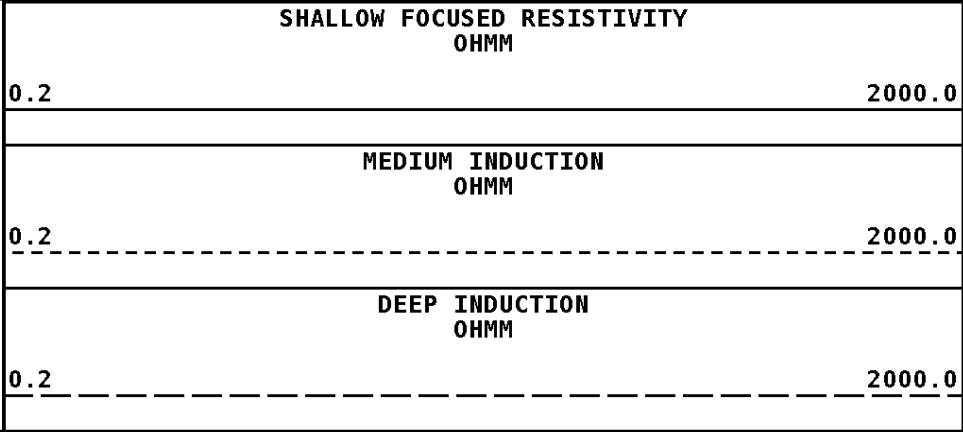
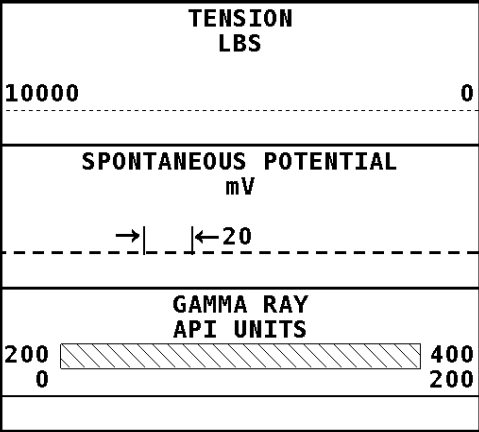
### 1:240 MAIN SECTION



#### \* Borehole Zone Factors \*

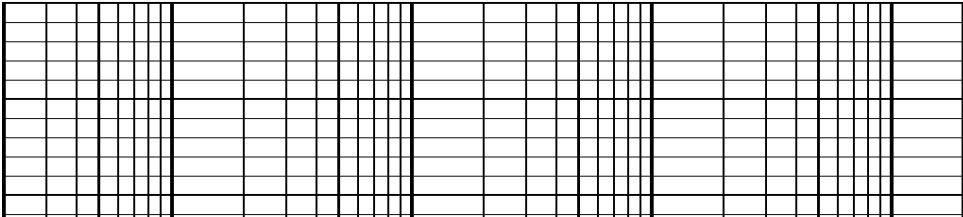
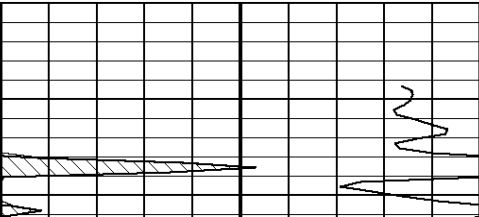
<b>Zone 1 99999.0 to 0.0 Feet</b>	
Drill Bit Size _____	5.625 in
BHT Depth _____	600.000 ft
Borehole Temperature _____	73.0 degF
Temperature Gradient _____	1.00 DFHF
Resistivity Of Mud _____	10.000 ohm/m
Standoff _____	0.0
Resistivity Of Mud Temperature _____	52.00 degF

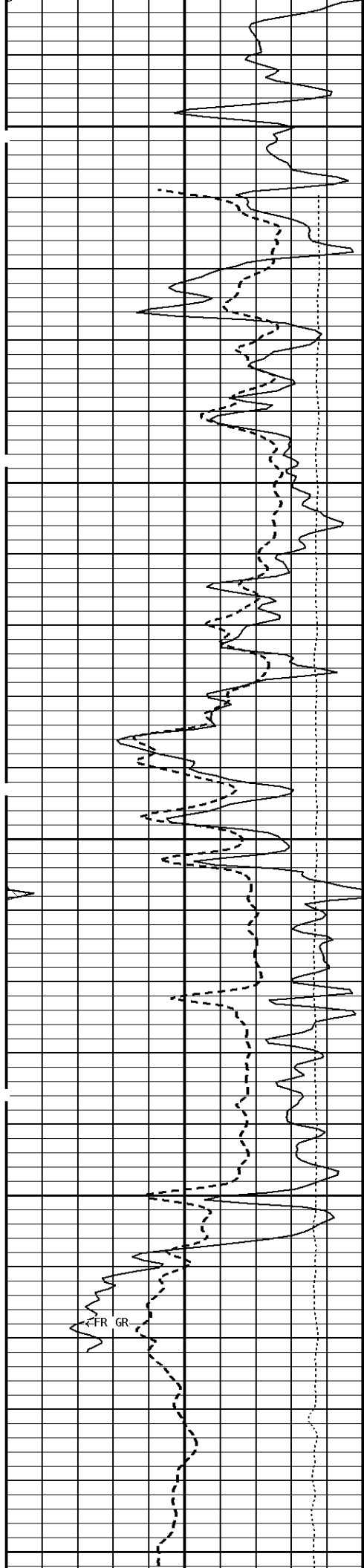
**Well File:** RFP\_GROSS\_11-6A-2\_OCT21\_STK **Scale:** 1:240  
**Segment:** V1.D1.S4 Reprocess of REPEAT **Acquired:** 2011-10/21 10:41 3.2.0-10220  
**Reference:** 0 **Processed:** 2011-10/21 11:11 3.2.0-10220



### 1:240 REPEAT SECTION

File #1.1.4

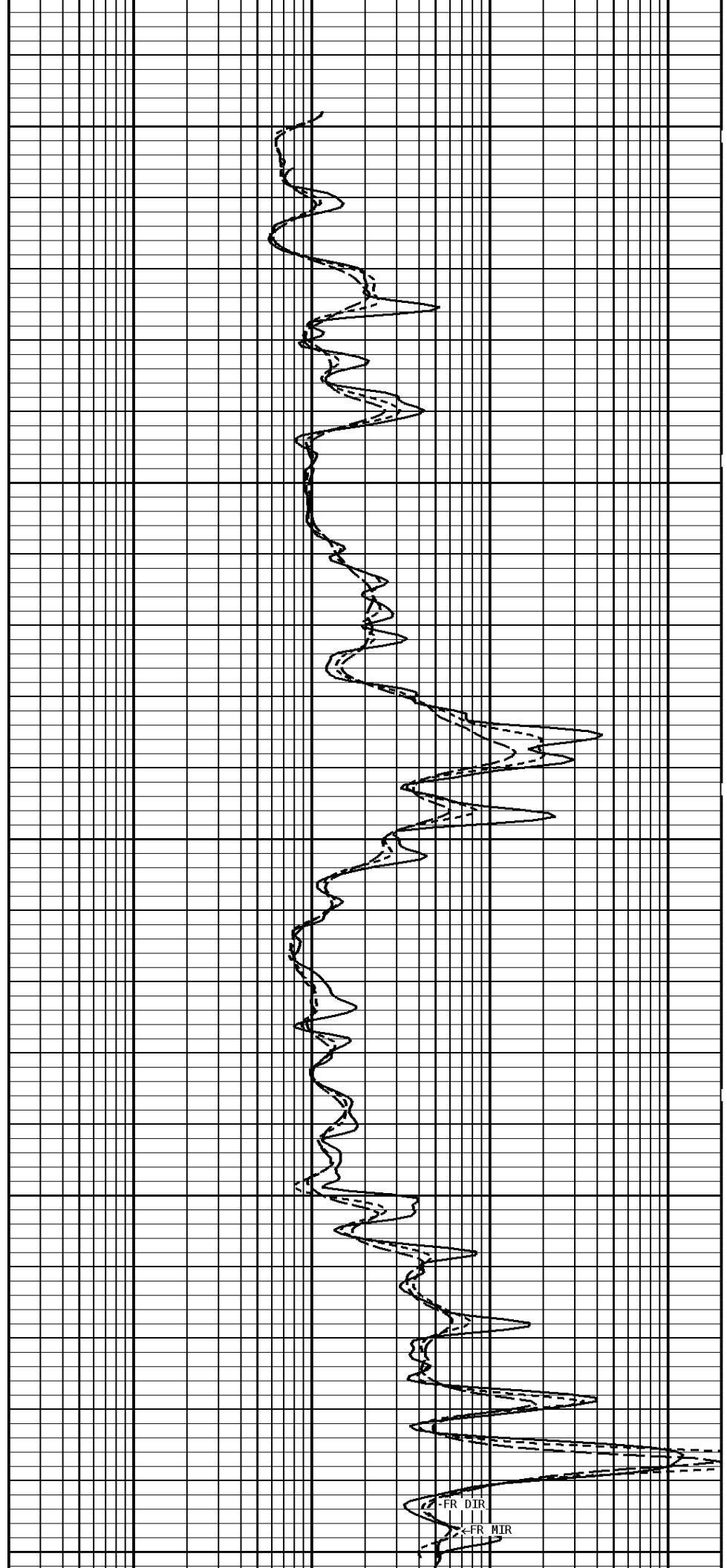


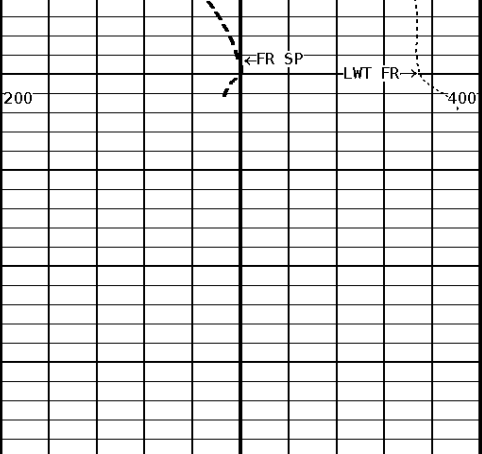


300

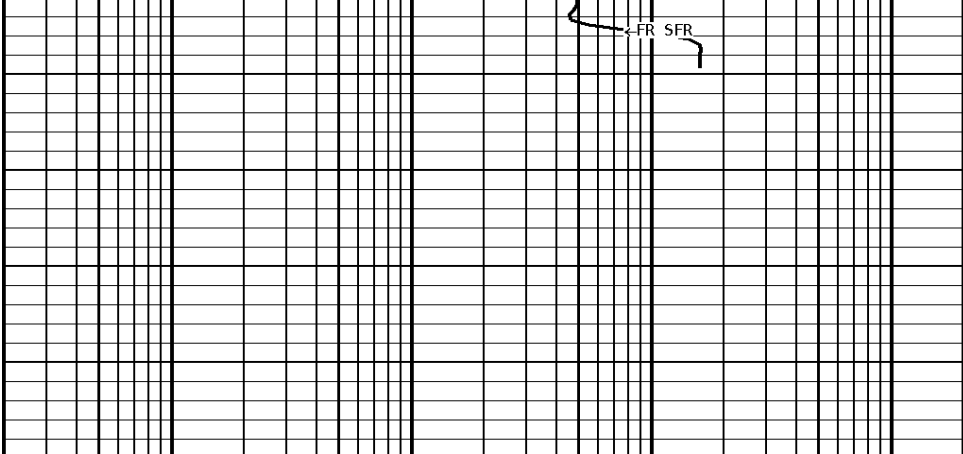
400

500

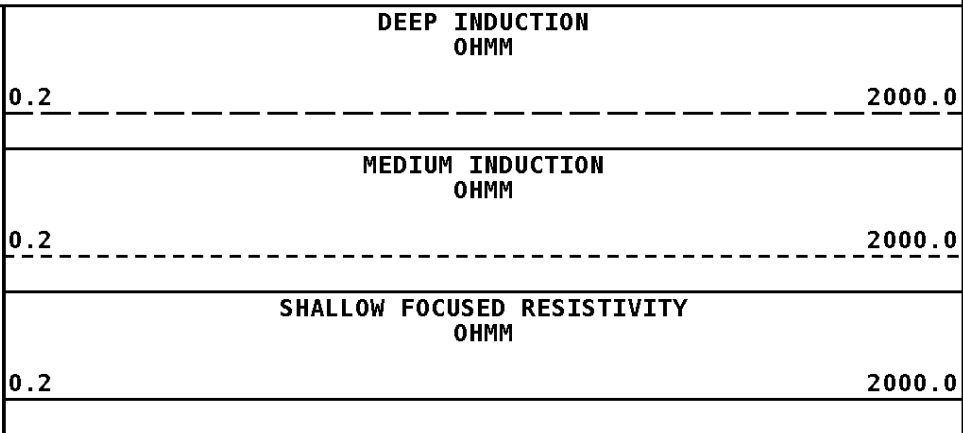
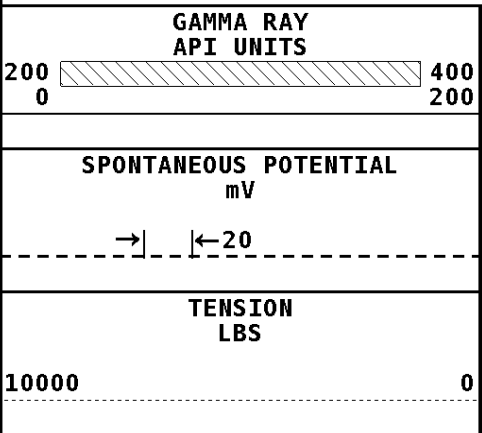




511



**1:240 REPEAT SECTION**



**\* Borehole Zone Factors \***

Zone 1 99999.0 to 0.0 Feet		
Drill Bit Size	_____	5.625 in
BHT Depth	_____	600.000 ft
Borehole Temperature	_____	73.0 degF
Temperature Gradient	_____	1.00 DFHF
Resistivity Of Mud	_____	10.000 ohm/m
Standoff	_____	0.0
Resistivity Of Mud Temperature	_____	52.00 degF

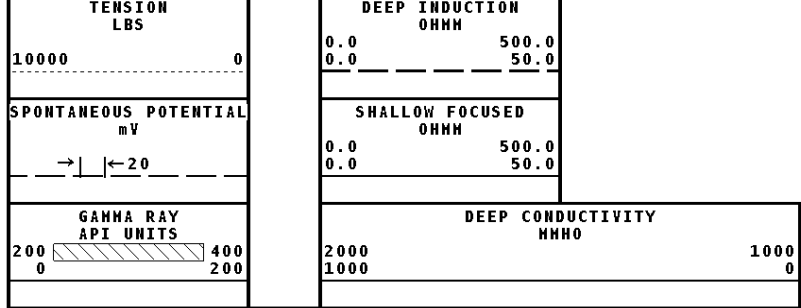
**\* Calibration Summary \***

Shop Calibration GRT-B					
Performed : 16-MAY-2011		Time : 09:49			
Sensor Suite : GR-GR5		ID : GRT-BA-14			
	Measured	Units	Calibrated	Units	
GR	Background	Jig	Jig		
	50	361	175		GRAPI

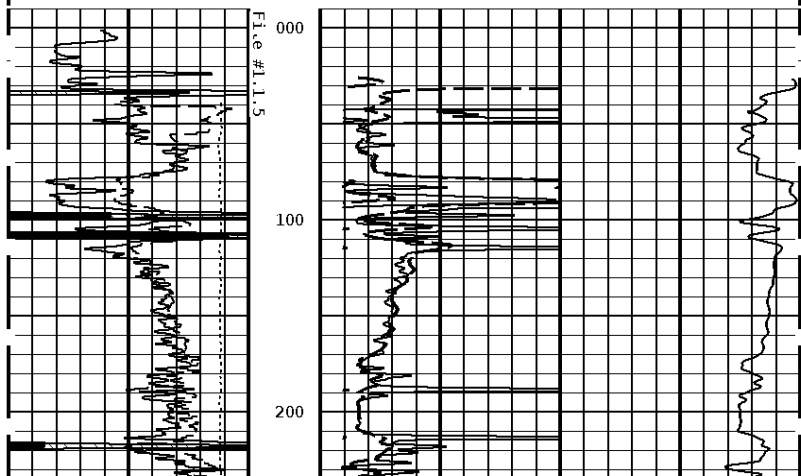
Shop Calibration PIT-CA					
Performed : 18-May-2009		Time : 10:06			
Sensor Suite : P-IND-T		ID : PIT-AB-18			
	Measured		Calibrated		
	R	X	R	X	Units
Air	131380	130013	0.2	0.4	MMHOS
Zero	131067	131066	0.0	0.0	MMHOS
Reference	252628	252684	5000.0	5000.0	MMHOS
Loop	151831	174542	2672.1	989.9	MMHOS
Sonde Error			-2.0	-4.3	MMHOS
Cond			5000.0	5000.0	MMHOS
					Deep

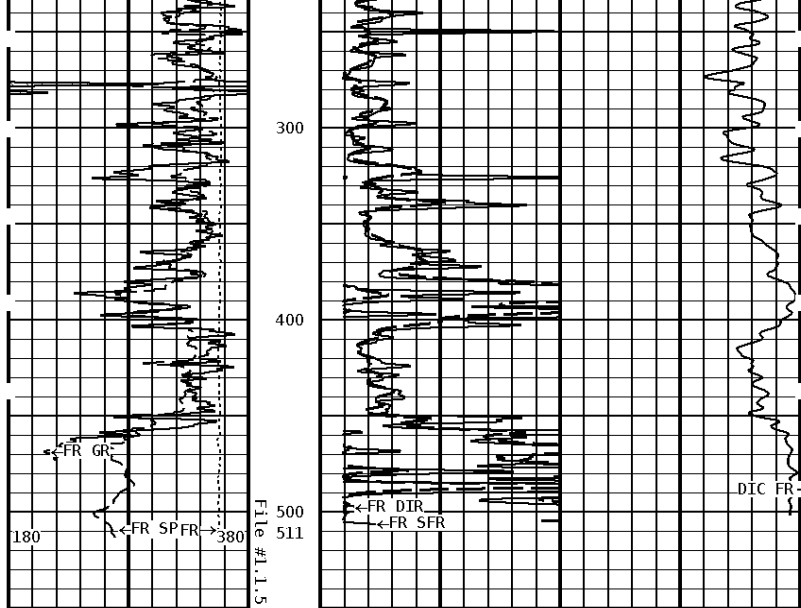
		Measured		Calibrated		Units
		R	X	R	X	
Air		129385	131252	0.1	0.1	MMHOS
Zero		131079	131072	0.0	0.0	MMHOS
Reference		230616	232102	2000.0	2000.0	MMHOS
Loop		149042	174745	1256.1	466.1	MMHOS
Sonde Error				-3.3	0.2	MMHOS
Cond				2000.0	2000.0	MMHOS
Temperature						
		Measured		Calibrated		Units
		Low	High	Low	High	
		16980.0	56920.0	70.0	350.0	DEGF
Performed : 18-May-2009			Time : 10:04			
Sensor Suite : SFL			ID : PIT-AB-18			
Internal						
		Measured		Calibrated		Units
		Zero	Reference	Zero	Reference	
Im		32765.1	50517.2	0.0	7028.0	uA
Ib		32772.1	50309.4	0.0	1750.0	mA
MOM1		32830.8	57160.2	0.0	175.0	mV
Equivalent SFL					43.97	OHMM
Performed : 18-May-2009			Time : 09:50			
Sensor Suite : P-SP			ID : PIT-AB-18			
Internal						
		Measured		Calibrated		Units
		Zero	Reference	Zero	Reference	
		32790.5	58989.2	0.0	1000.0	mV
Performed : 20-Dec-2007			Time : 12:53			
Sensor Suite : P-RMUD			ID : PIT-AB-18			
Internal						
		Measured		Calibrated		Units
		Zero	Reference	Zero	Reference	
Rmi		0.0	238.4	0.0	290.6	mA
Rmv		0.0	198.0	0.0	290.6	mV
Equivalent Rm					0.9037	OHMM

Well File: RFP\_GROSS\_11-6A-2\_OCT21\_STK      Scale: 1:1200  
Segment: V1.D1.S5 Reprocess of MAIN      Acquired: 2011-10/21 10:52 3.2.0-10220  
Reference: 0      Processed: 2011-10/21 11:11 3.2.0-10220



**1:1200 MAIN SECTION**





**1:1200 MAIN SECTION**

