



Dual Compensated Porosity Log

DIGITAL LOG (785) 625-3858

API No. 15-083-21,722-00-00

Company **Norstar Petroleum, Inc.**
 Well **Phillips-Denny No. 1-4**
 Field **Fossil Ridge**
 County **Hodgeman** State **Kansas**

Location **SE NW NE
1046' FNL & 1777' FEL**

Other Services
DIL
MEI/BHCS

Permanent Datum **Ground Level** Elevation **2302**
 Log Measured From **Kelly Bushing** 5 Ft. Above Perm. Datum
 Drilling Measured From **Kelly Bushing**

Sec: **4** Twp: **22 S** Rge: **23 W**

Elevation
K.B. 2307
D.F. 2302
G.L. 2302

Date **8/28/2011**

Run Number **One**

Type Log **CNL / CDL**

Depth Driller **4700**

Depth Logger **4701**

Bottom Logged Interval **4680**

Top Logged Interval **3700**

Type Fluid In Hole **Chemical**

Salinity, PPM CL **7,400**

Density **9.1**

Level **Full**

Max. Rec. Temp. F **125**

Operating Rig Time **4 1/2 Hours**

Equipment -- Location **91 Hays**

Recorded By **K.Bange**

Witnessed By **Brad Rine**

Borehole Record				Casing Record			
Run No.	Bit	From	To	Size	Wgt.	From	To
1	12.25	00	257	8.625	24#	00	257
2	7.875	257	4700				

<<< Fold Here >>>

All interpretations are opinions based on inferences from electrical or other measurements and we cannot and do not guarantee the accuracy or correctness of any interpretation, and we shall not, except in the case of gross or willful negligence on our part, be liable or responsible for any loss, costs, damages, or expenses incurred or sustained by anyone resulting from any interpretation made by any of our officers, agents or employees. These interpretations are also subject to our general terms and conditions set out in our current Price Schedule.

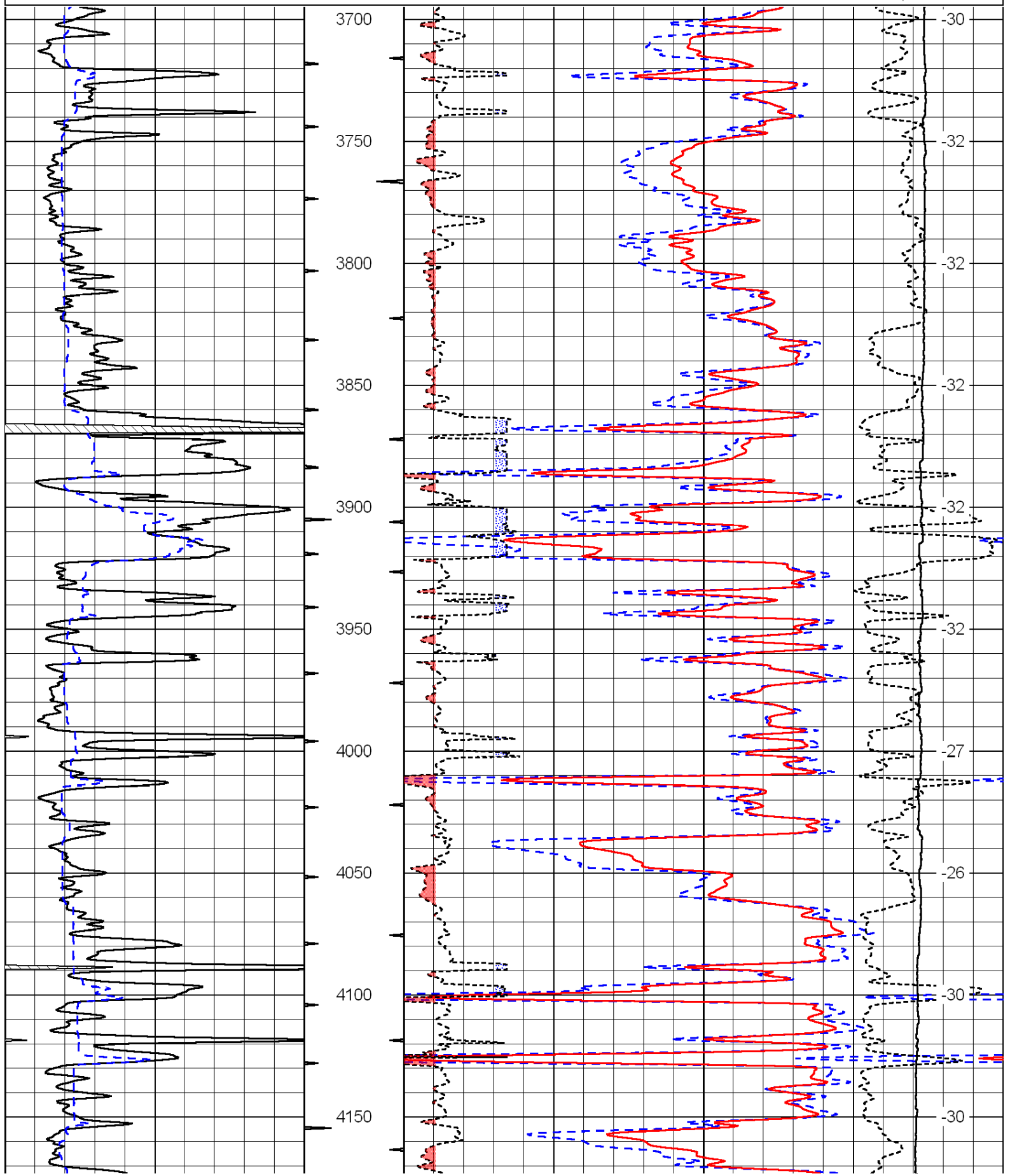
Comments

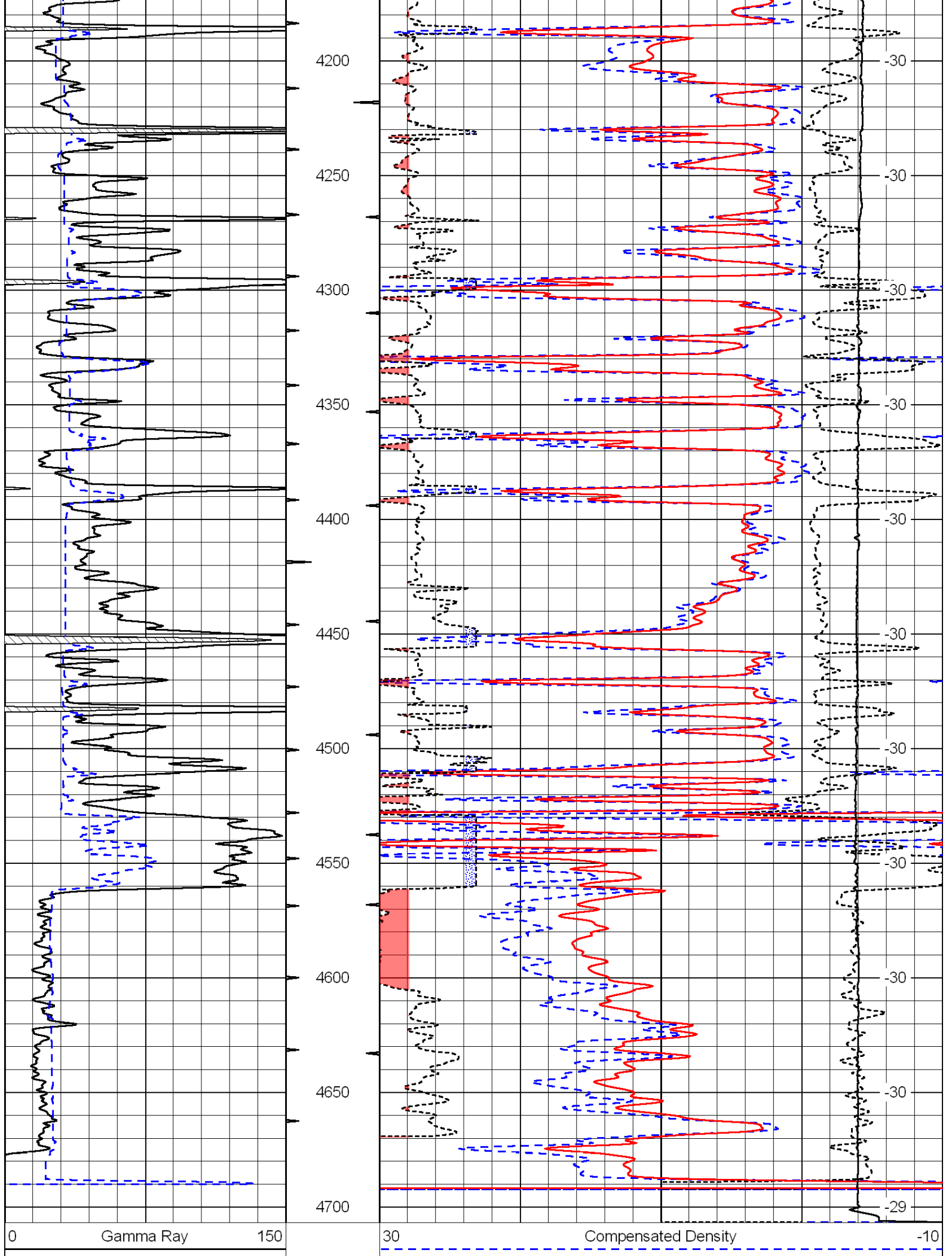
Thank you for using Log-Tech, Inc.
 (785) 625-3858

Ness City South to S Rd.
 East 2 1/2
 South into

0	Gamma Ray	150
6	Caliper (GAPI)	16

30	Compensated Density		-10
2	Bulk Density		3
15000	Line Tension		0
2.625	DGA	3.425	-0.25
		Correction	0.25
			LSPD

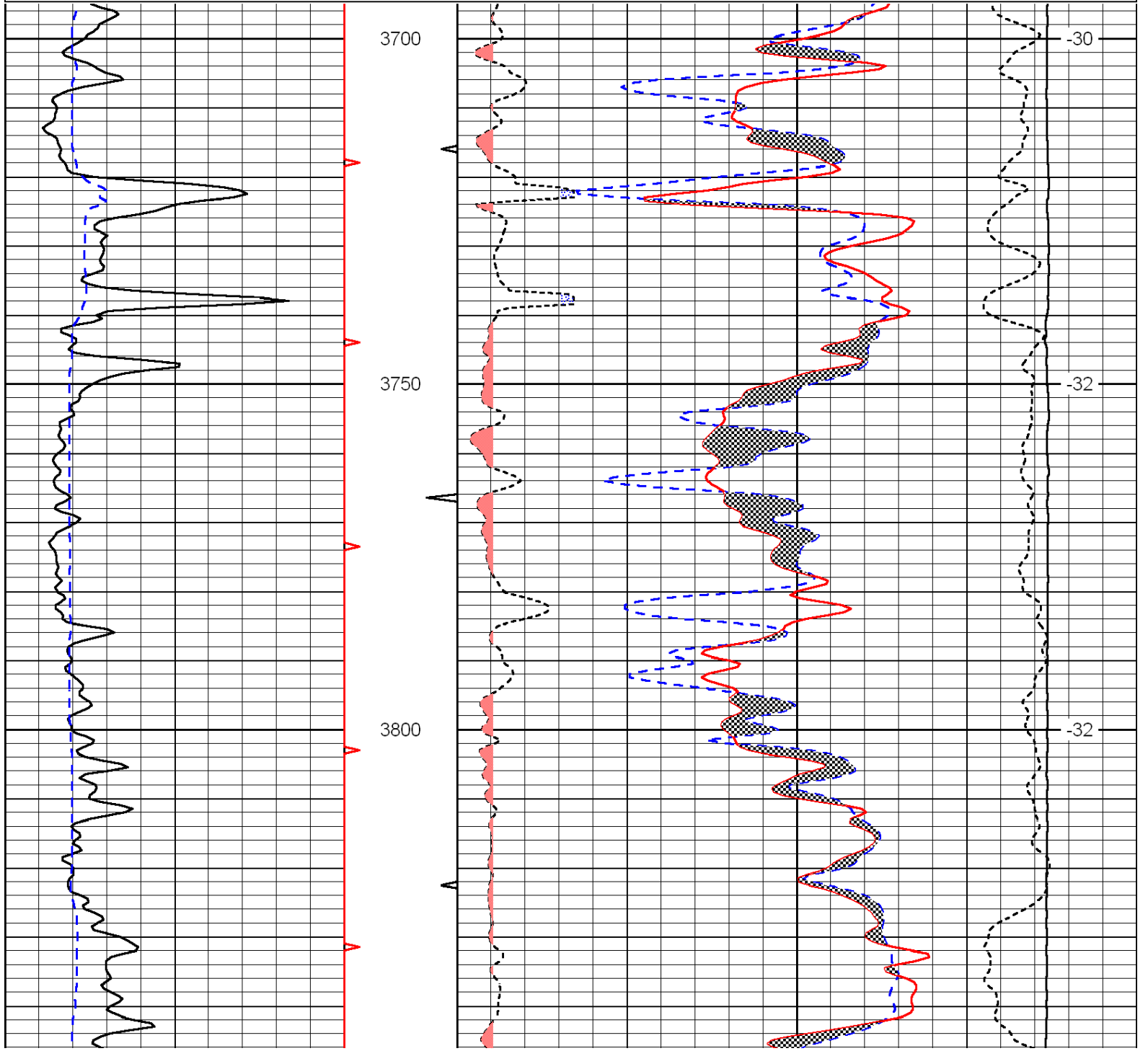


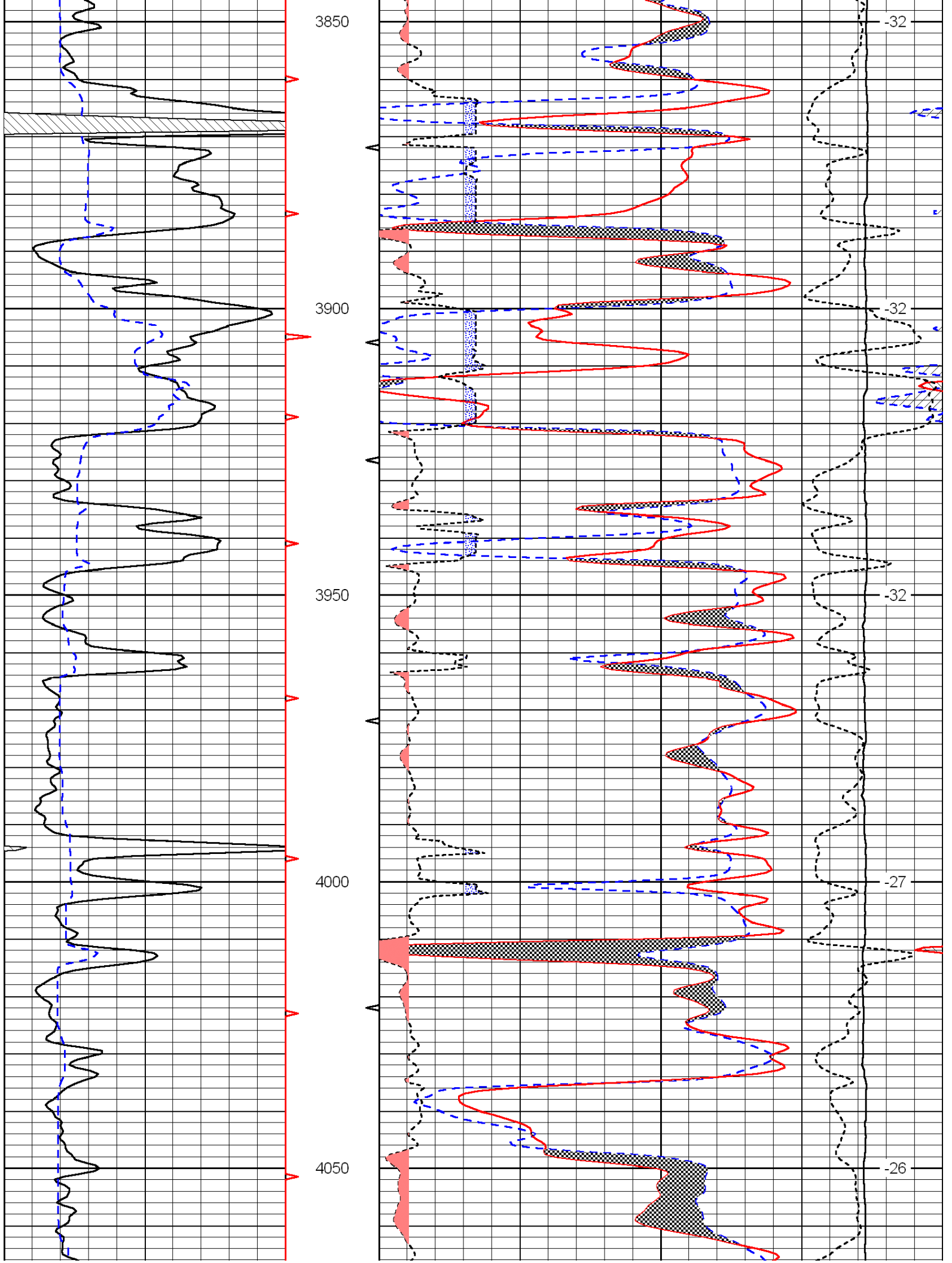


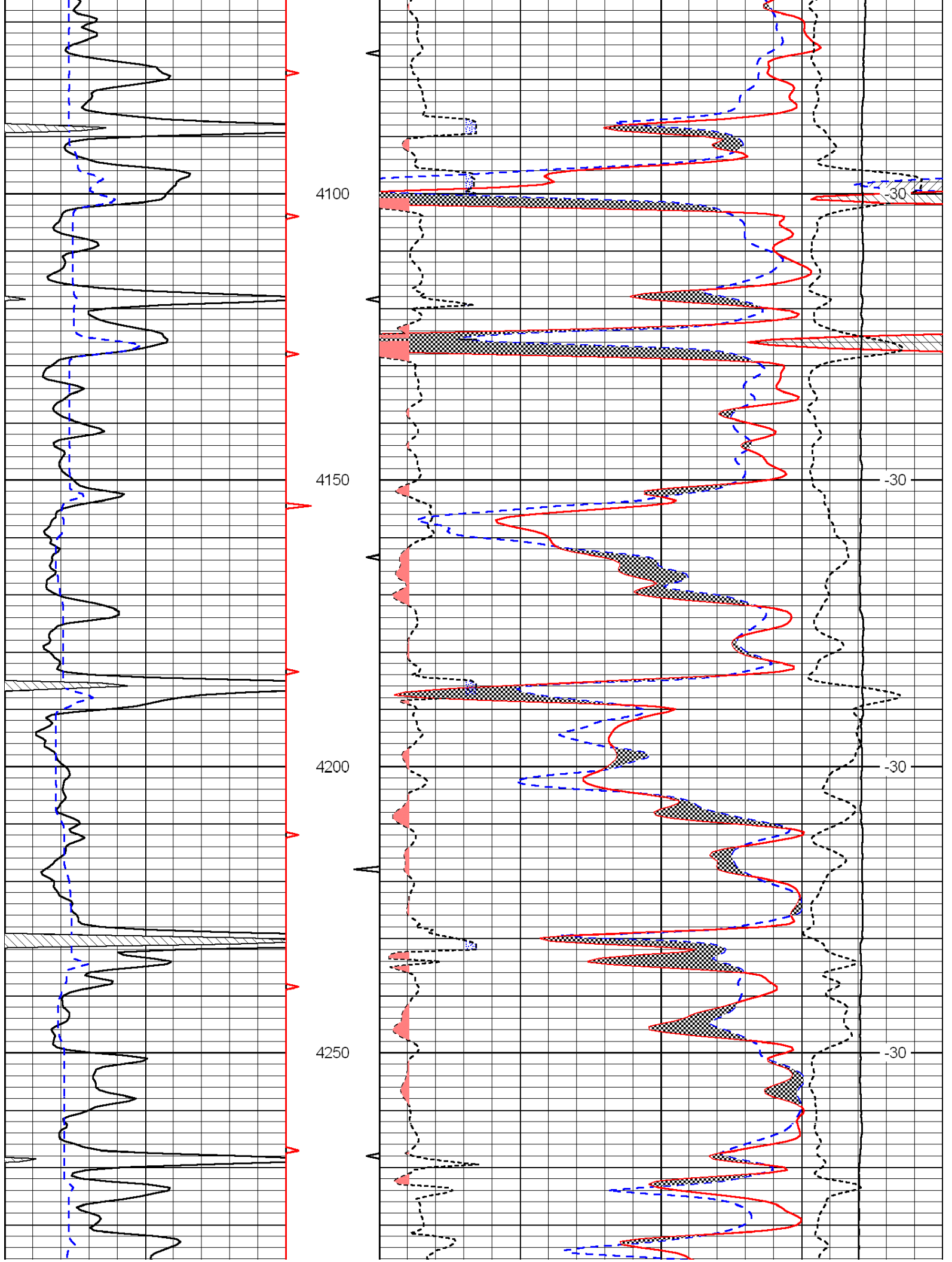
6	Caliper (GAPI)	16	2	Bulk Density	3
			15000	Line Tension	0
			2.625	DGA	3.425
				-0.25	Correction
					0.25
					LSPD

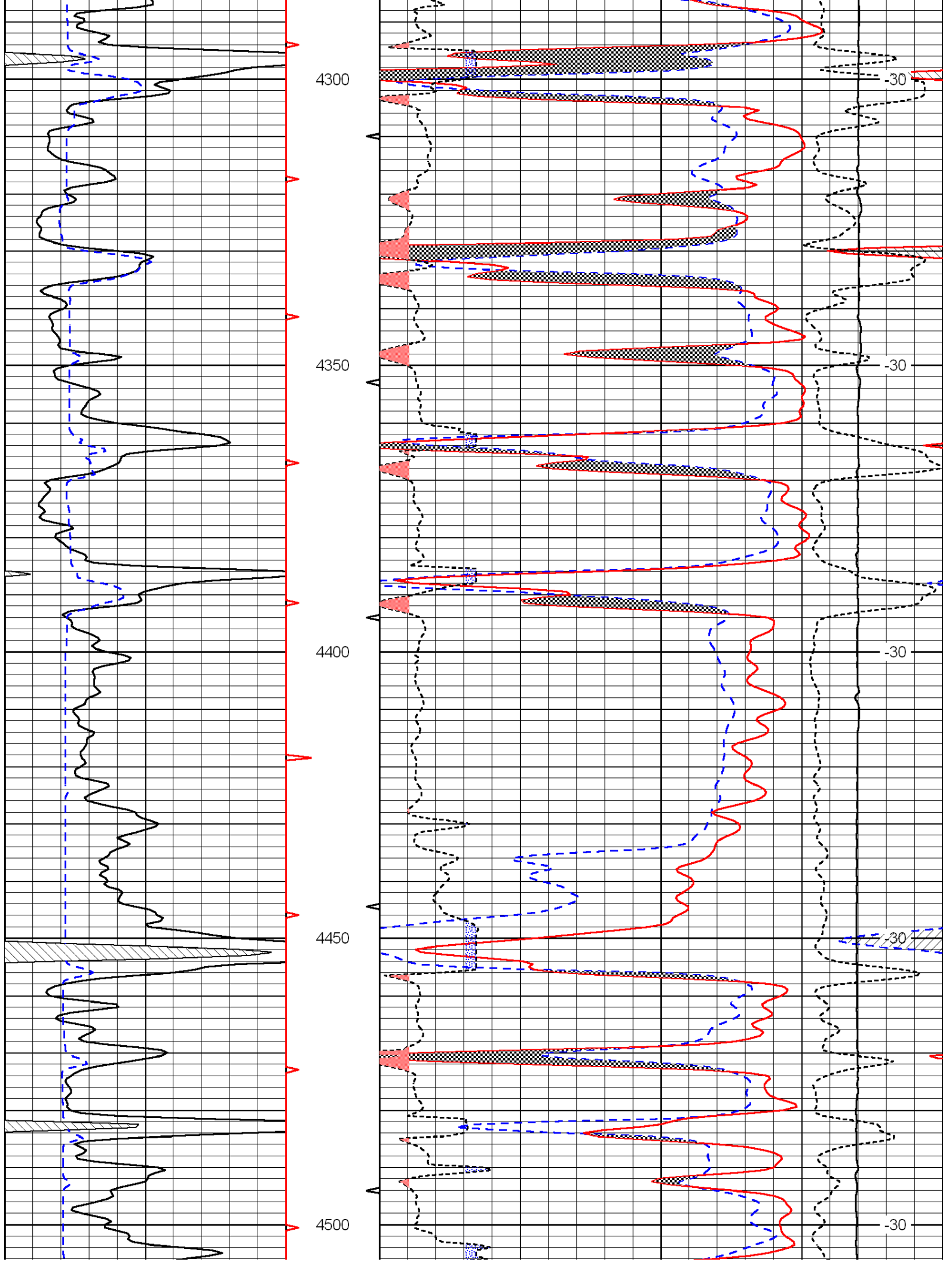
Database File: c:\warrior\data\norstar_phillips-denny no. 1-4\norstar082811hd.db
 Dataset Pathname: dil/norstack
 Presentation Format: cndlspec
 Dataset Creation: Sun Aug 28 14:58:12 2011
 Charted by: Depth in Feet scaled 1:240

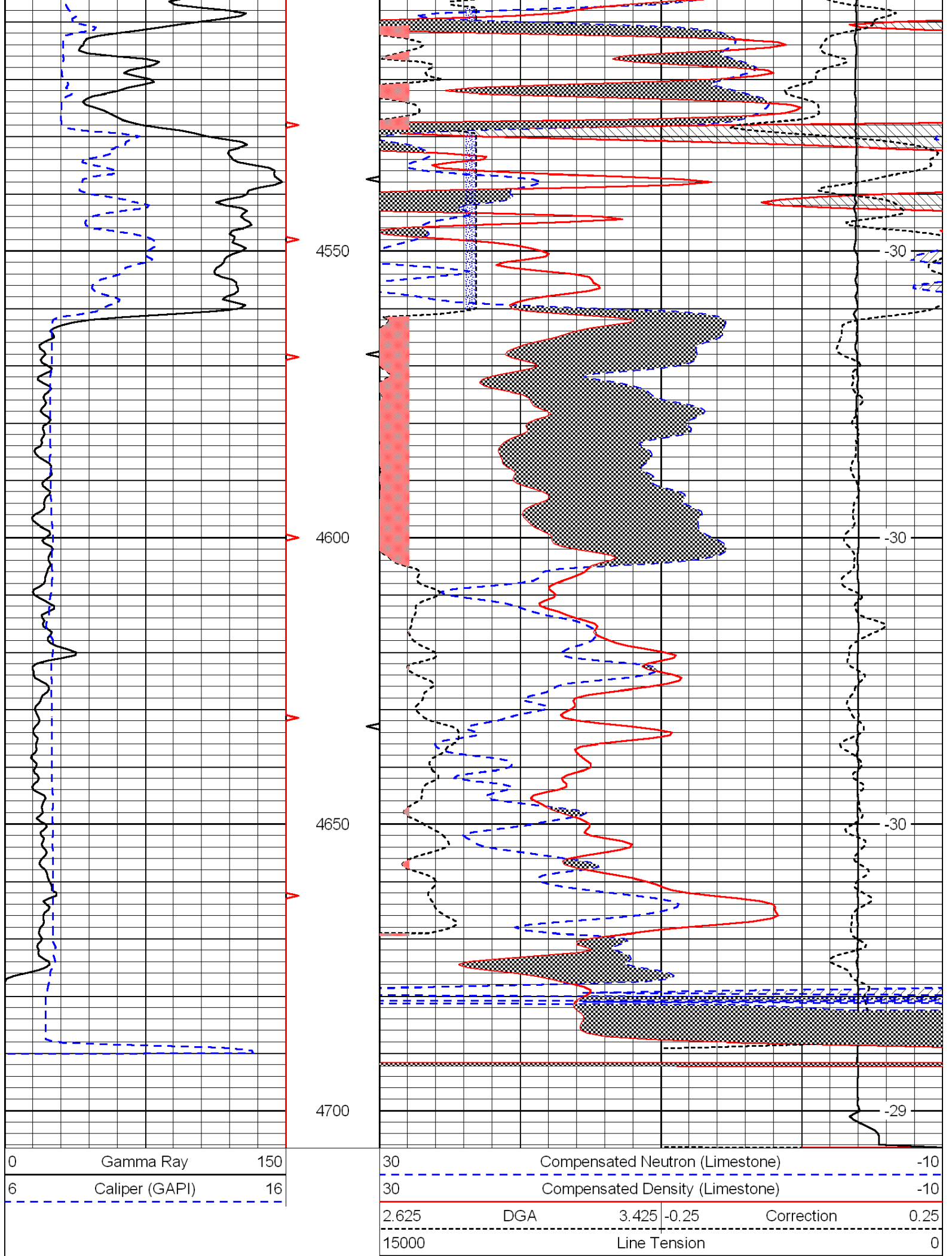
0	Gamma Ray	150	30	Compensated Neutron (Limestone)	-10
6	Caliper (GAPI)	16	30	Compensated Density (Limestone)	-10
			2.625	DGA	3.425
				-0.25	Correction
					0.25
			15000	Line Tension	0
					LSPD













Repeat Section

Database File: c:\warrior\data\norstar_phillips-denny no. 1-4\norstar082811hd.db
 Dataset Pathname: dil\norstrprt
 Presentation Format: cndlspec
 Dataset Creation: Sun Aug 28 12:44:03 2011
 Charted by: Depth in Feet scaled 1:240

0	Gamma Ray	150
6	Caliper (GAPI)	16

30	Compensated Neutron (Limestone)			-10	
30	Compensated Density (Limestone)			-10	
2.625	DGA	3.425	-0.25	Correction	0.25
15000	Line Tension			0	

LSPD

