



**Borehole Compensated
Sonic Log**

DIGITAL LOG (785) 625-3858

API No. 15-101-22,310-00-00	Company Credo Petroleum Corporation	Location 1420' FNL & 1980' FEL	Other Services CNL/CDL MEL/DIL
Well Marcelline No. 1-9	County Lane Lane		
Field Marcelline No. 1-9	State Kansas	Sec: 9 Twp: 17 S Rge: 29 W	Elevation K.B. 2820 D.F. 2815 G.L. 2815
Permanent Datum Log Measured From Drilling Measured From	Ground Level Kelly Bushing Kelly Bushing	Elevation 2815 5 Ft. Above Perm. Datum	

Date	9/15/2011				
Run Number	Two				
Type Log	BHC Sonic				
Depth Driller	4660				
Depth Logger	4664				
Bottom Logged Interval	4653				
Top Logged Interval	250				
Type Fluid In Hole	Chemical				
Salinity, PPM CL	3400				
Density	9.4				
Level	Full				
Max. Rec. Temp. F	125				
Operating Rig Time	5 1/2 Hours				
Equipment -- Location	91 Hays				
Recorded By	D.Kerr				
Witnessed By	Bruce Ard				

Borehole Record		Casing Record					
Run No	Bit	From	To	Size	Wgt.	From	To
One	12.25	00	260	8.625	23#	00	260
Two	7.875	260	TD				

<<< Fold Here >>>

All interpretations are opinions based on inferences from electrical or other measurements and we cannot and do not guarantee the accuracy or correctness of any interpretation, and we shall not, except in the case of gross or willful negligence on our part, be liable or responsible for any loss, costs, damages, or expenses incurred or sustained by anyone resulting from any interpretation made by any of our officers, agents or employees. These interpretations are also subject to our general terms and conditions set out in our current Price Schedule.

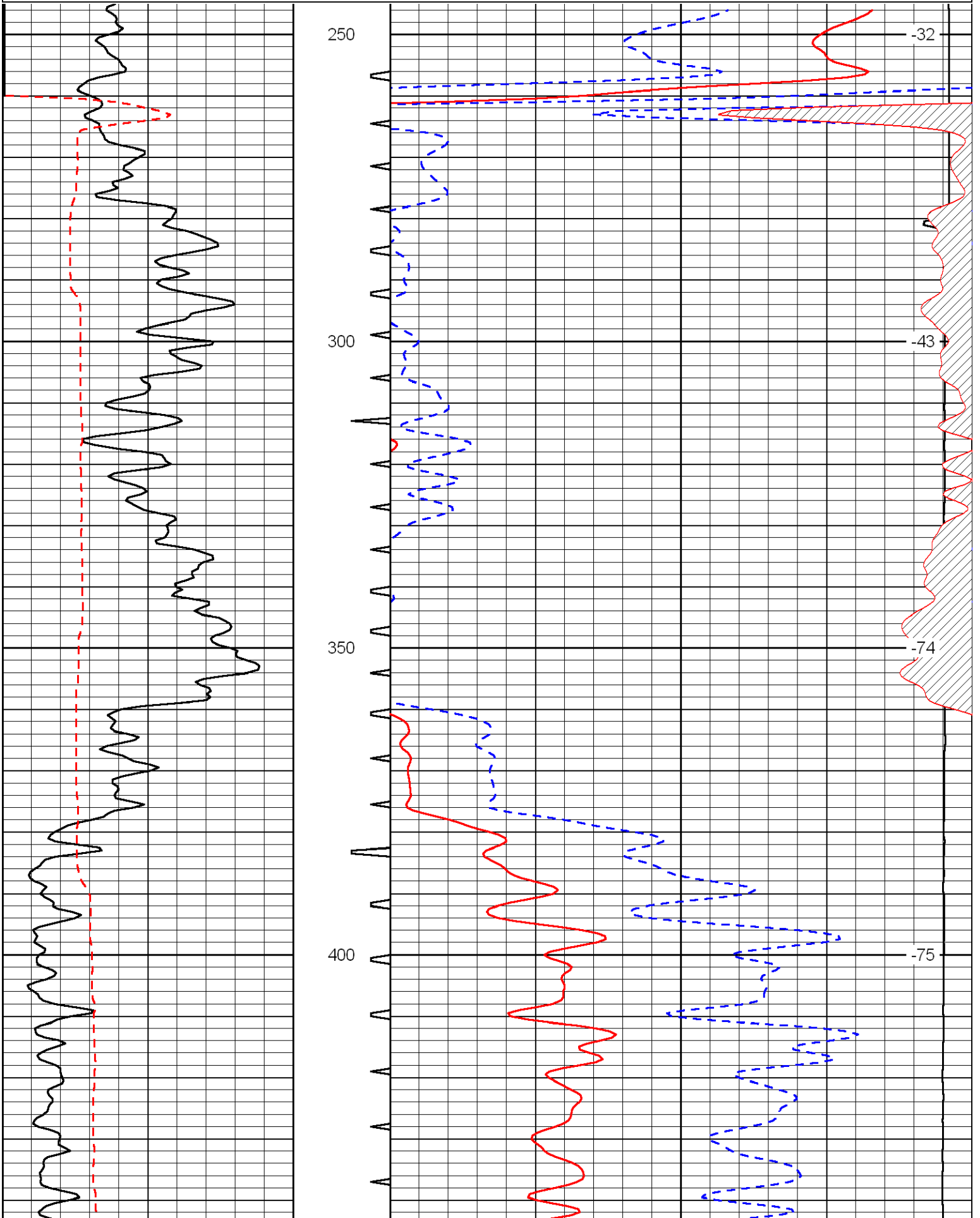
Comments

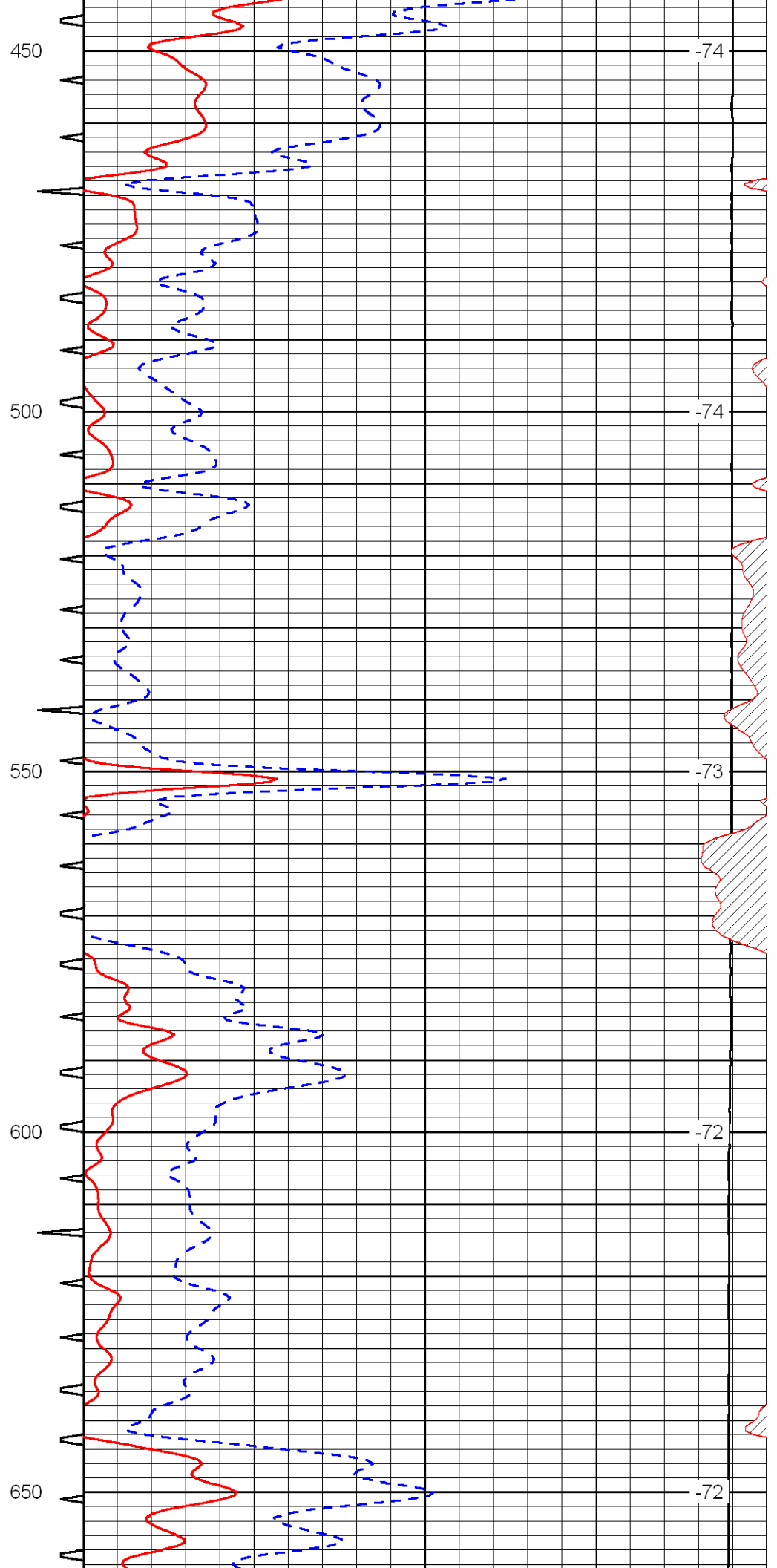
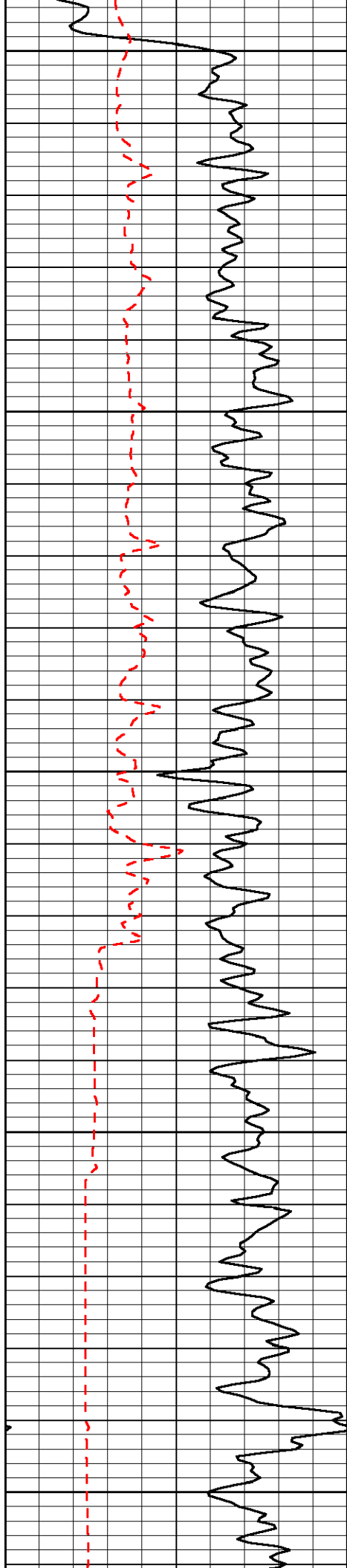
Thank you for using Log-Tech, Inc.
(785) 625-3858

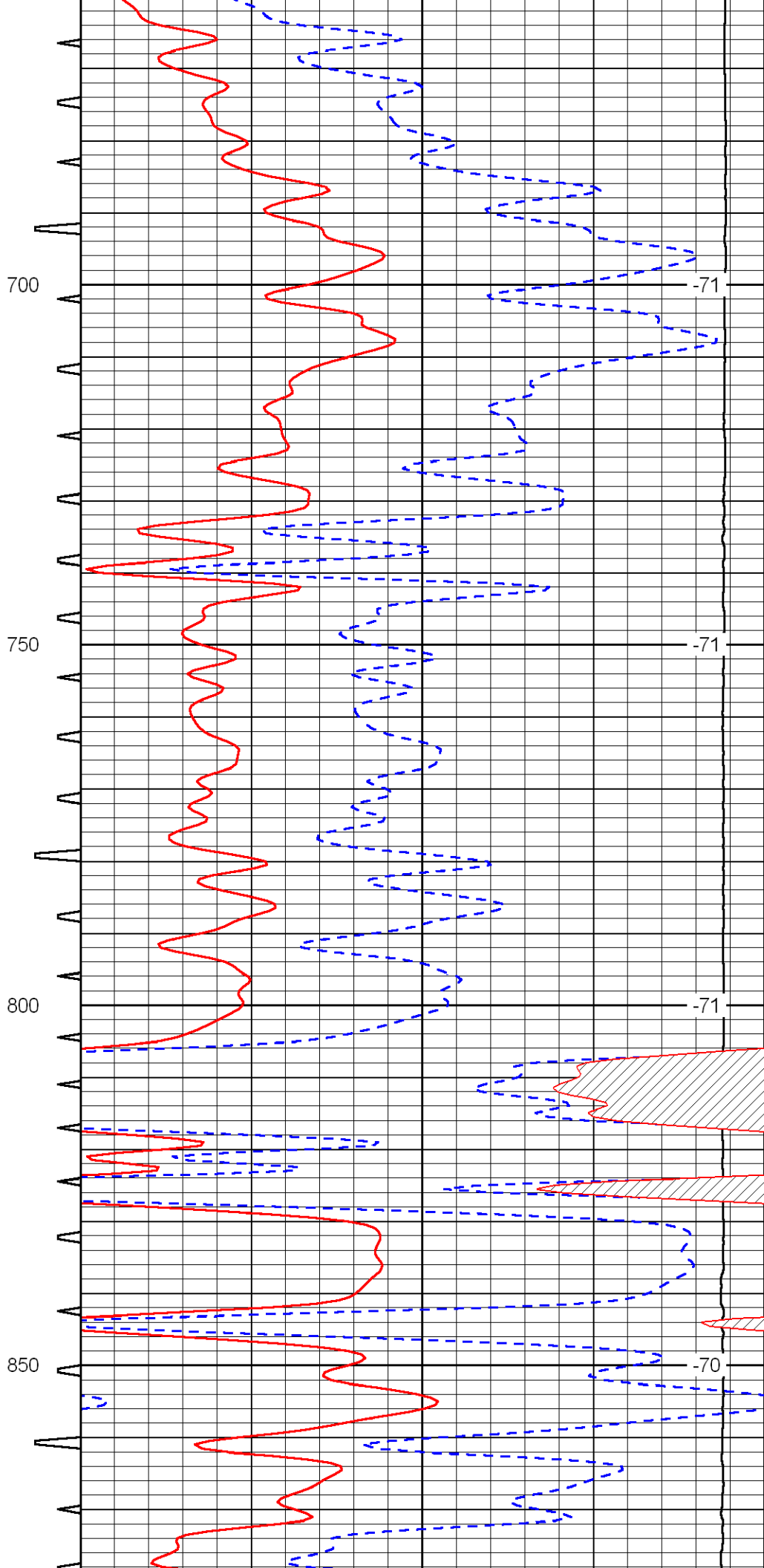
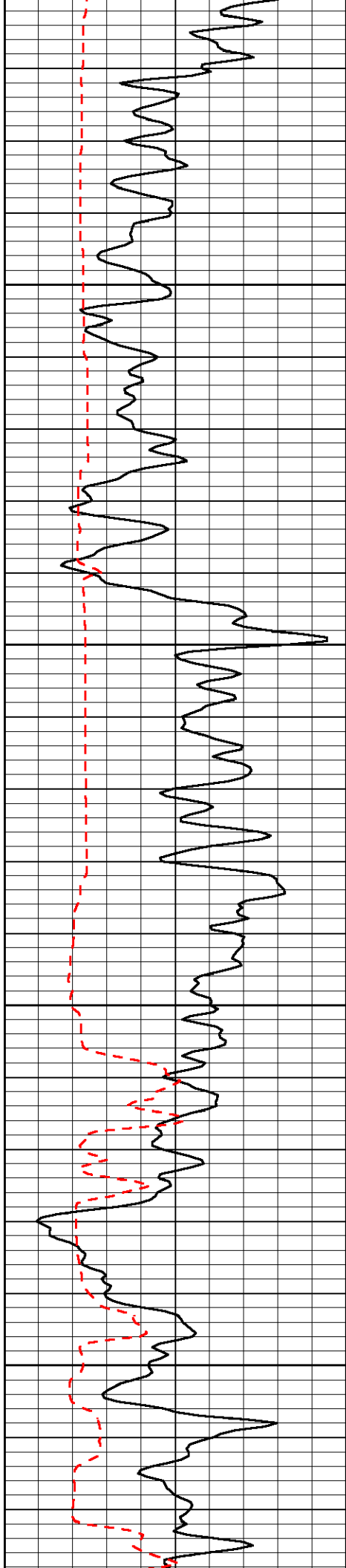
Shields KS, West to HWY 4 and HWY 23,
2 South, 2 1/4 West, 1/2 South, East Into

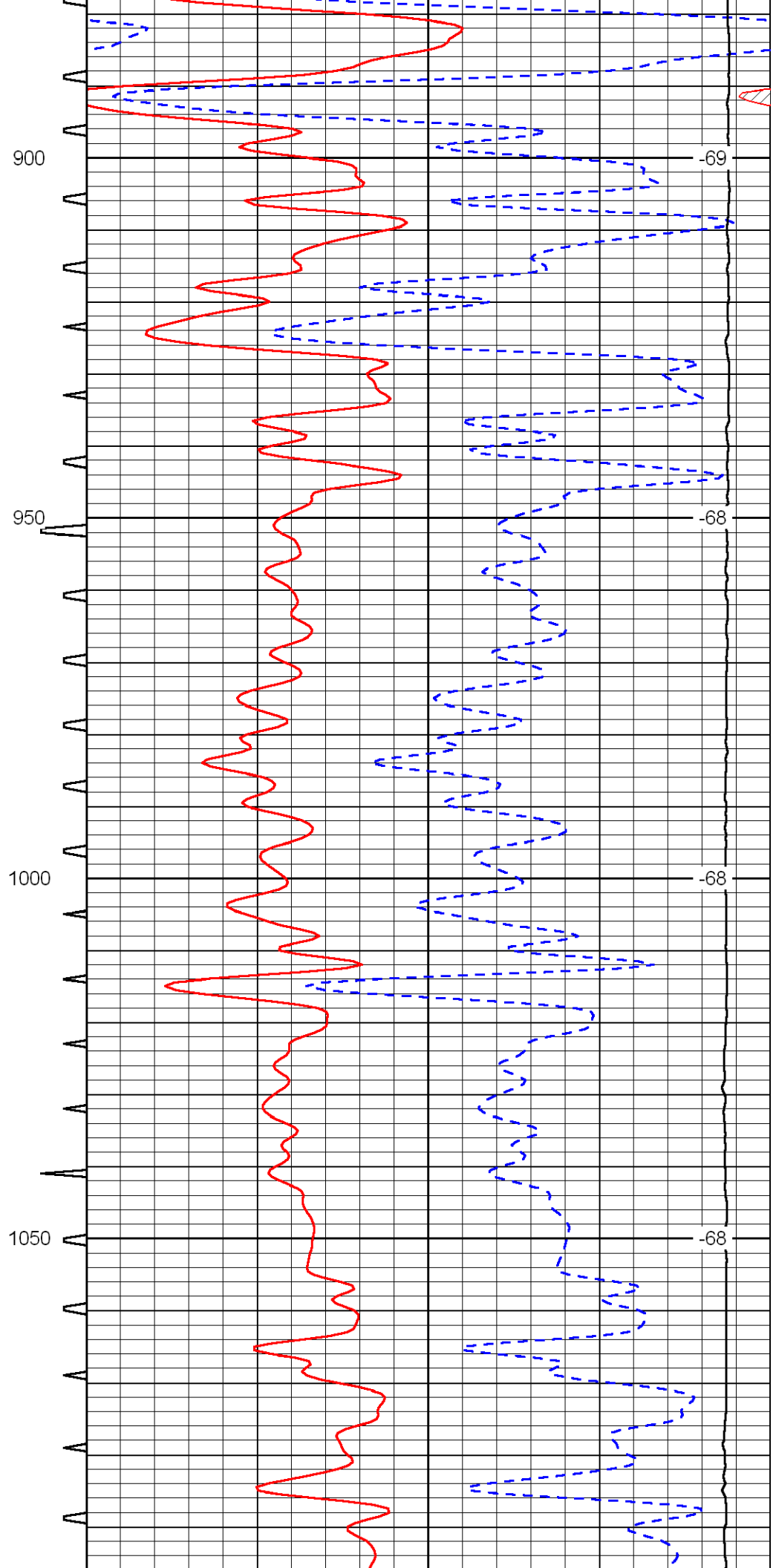
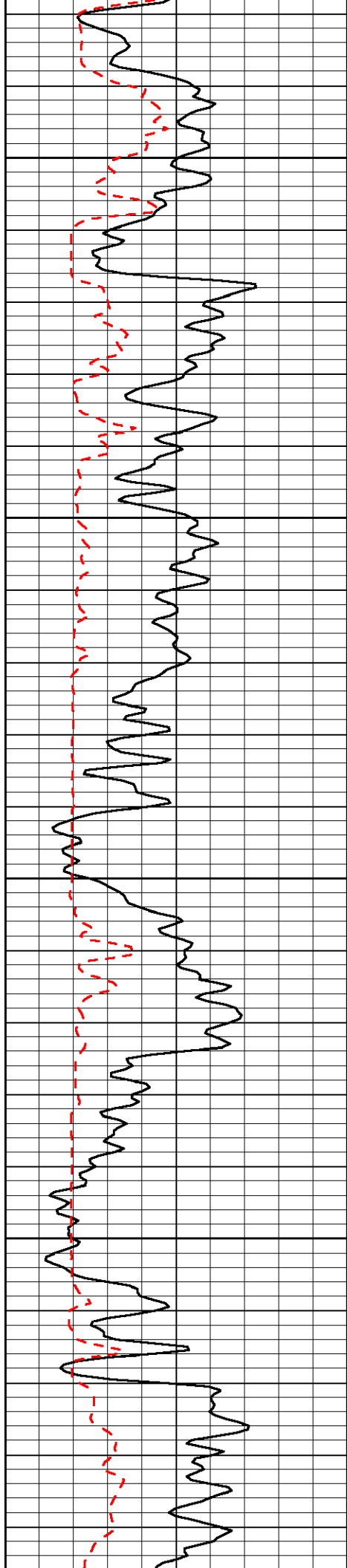
Database File: credo_091511hd.db
 Dataset Pathname: DIL/credstk
 Presentation Format: sonic
 Dataset Creation: Fri Sep 16 00:36:50 2011
 Charted by: Depth in Feet scaled 1:240

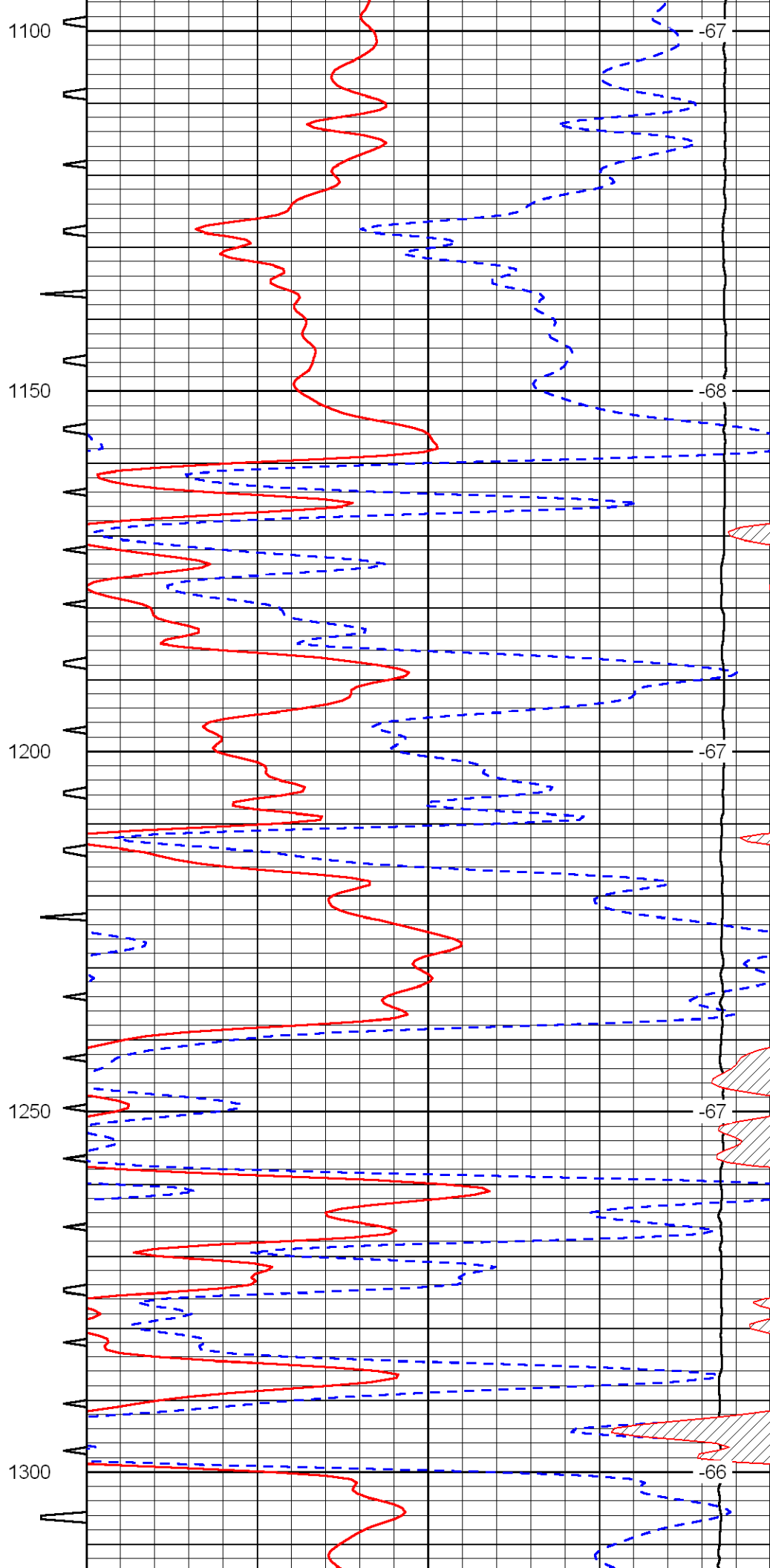
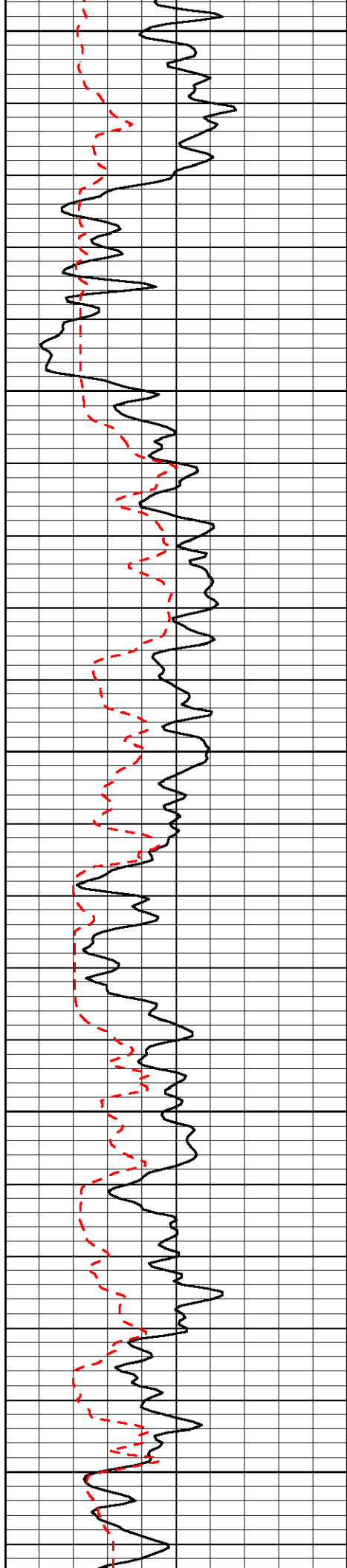
0	Gamma Ray	150	Sonic Int	140	Delta Time (usec/ft)	40
150	Gamma Ray	300	5	0	Sonic Porosity	-10
6	dCAL (GAPI)	16		15000	LTEN (lb)	0
						LSPD

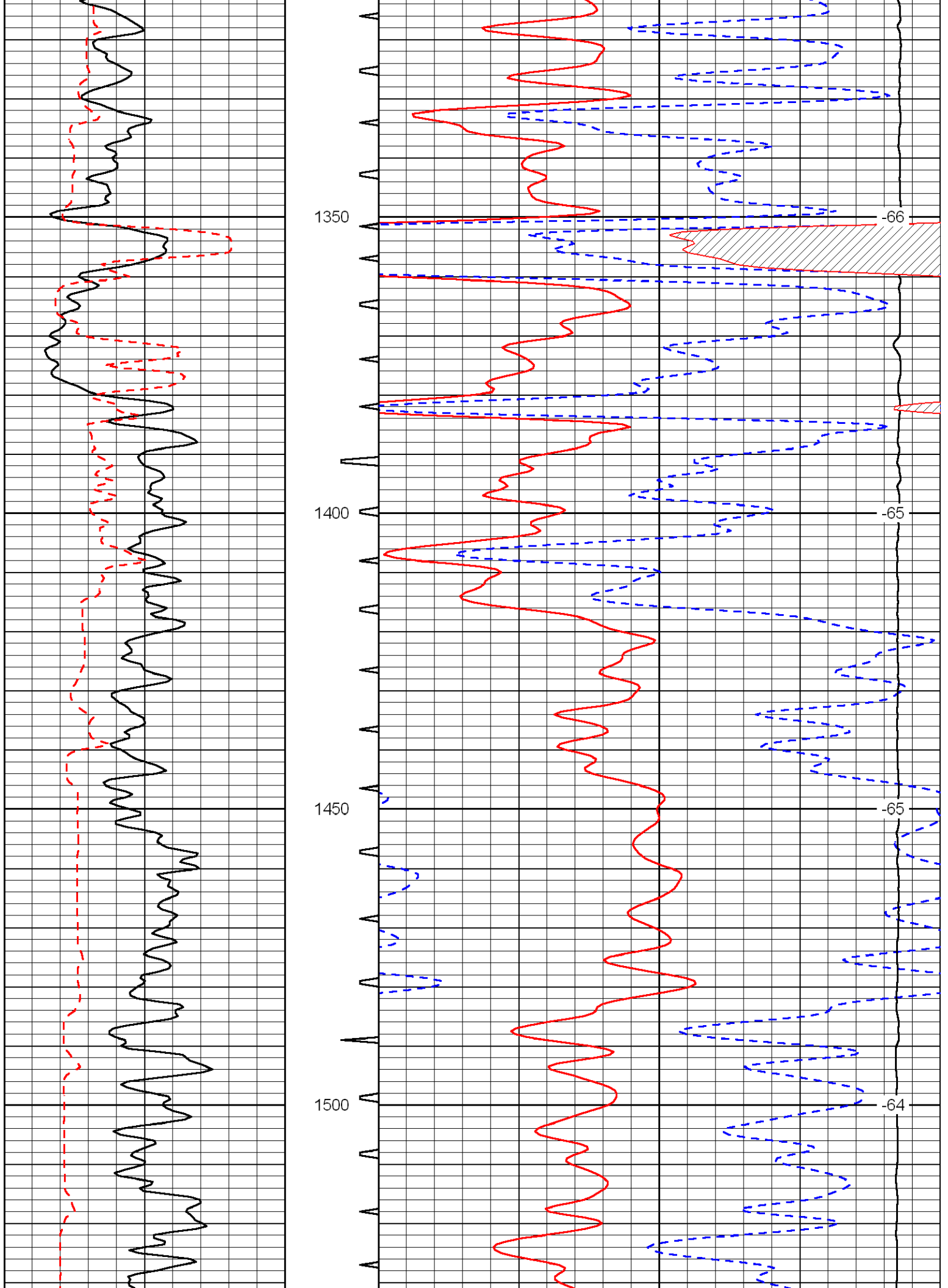


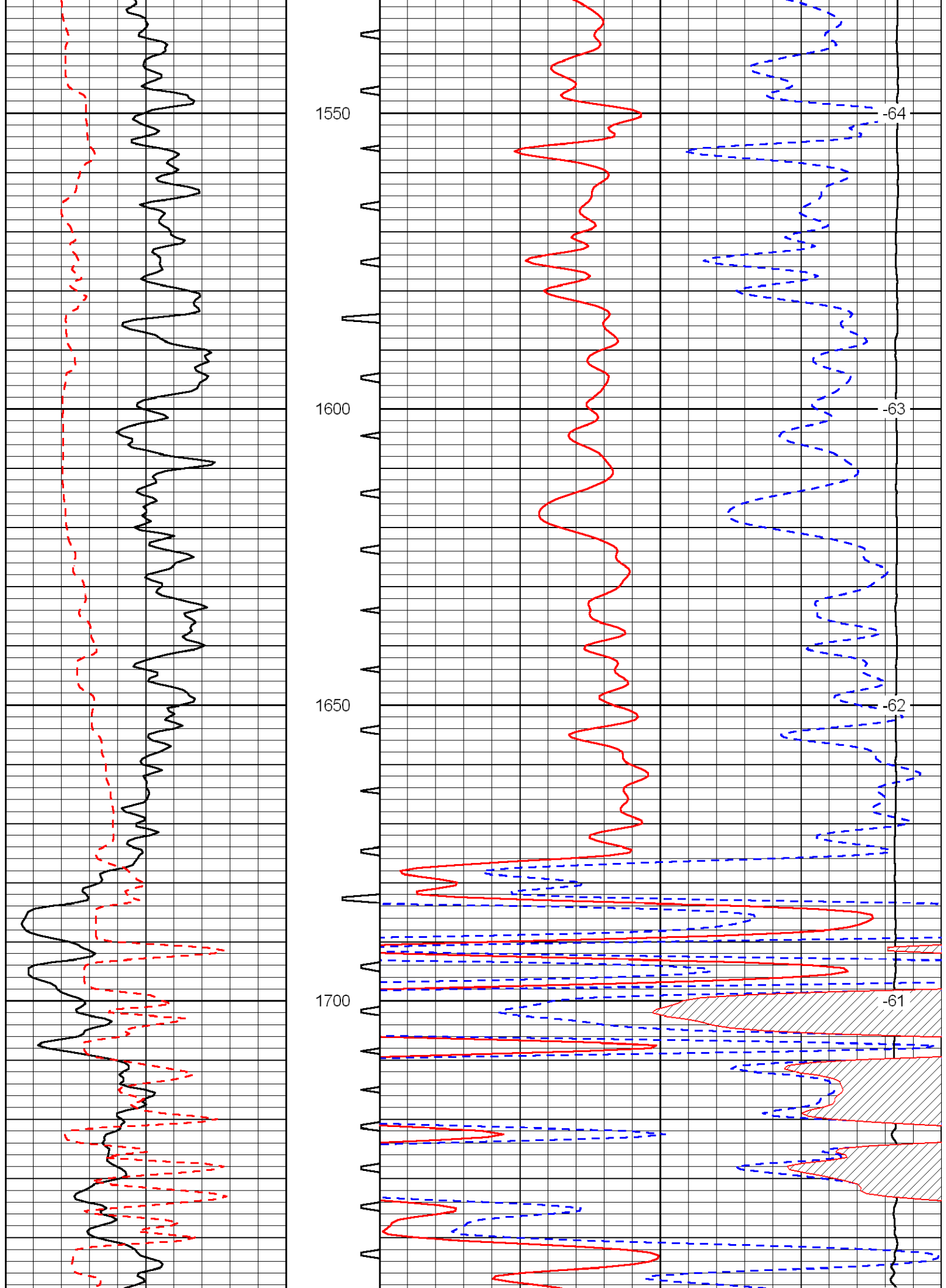


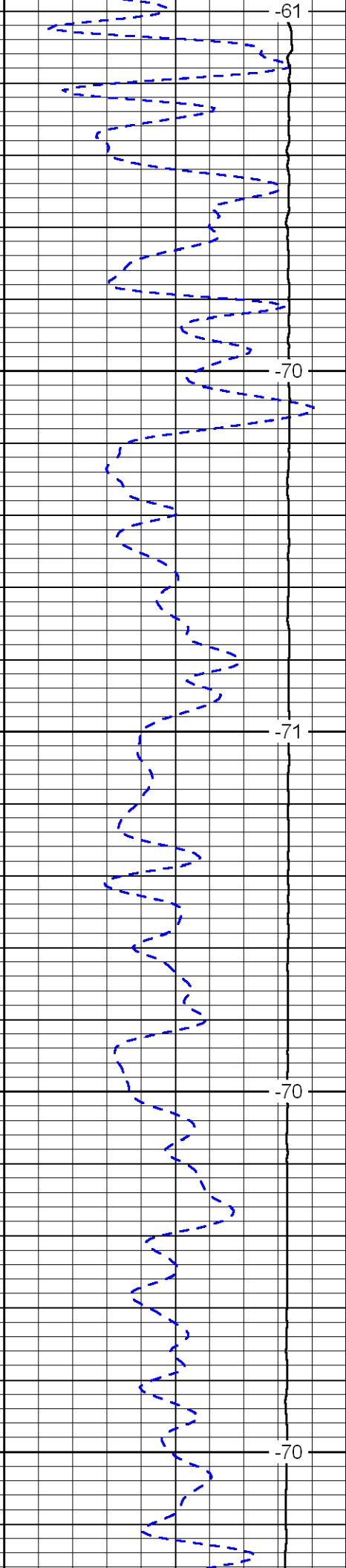
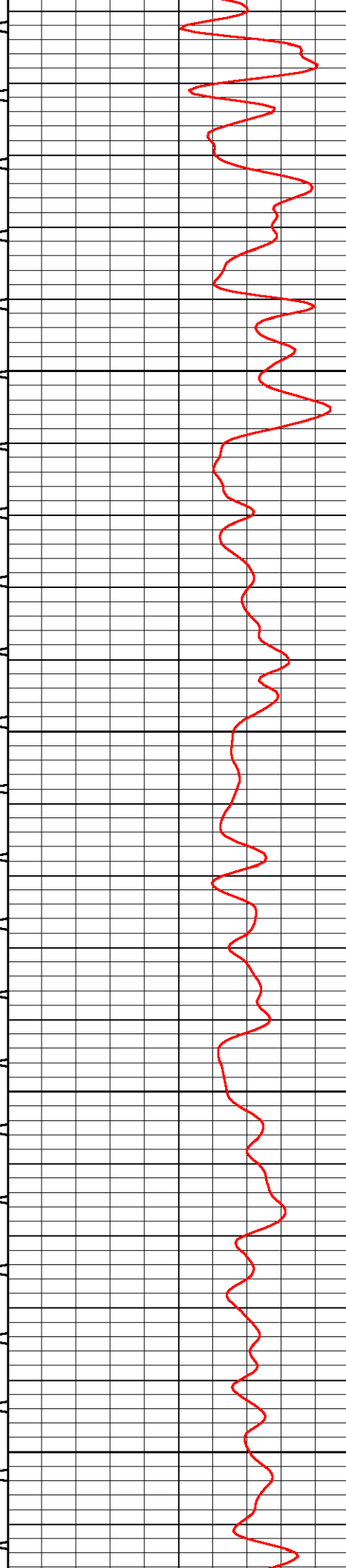
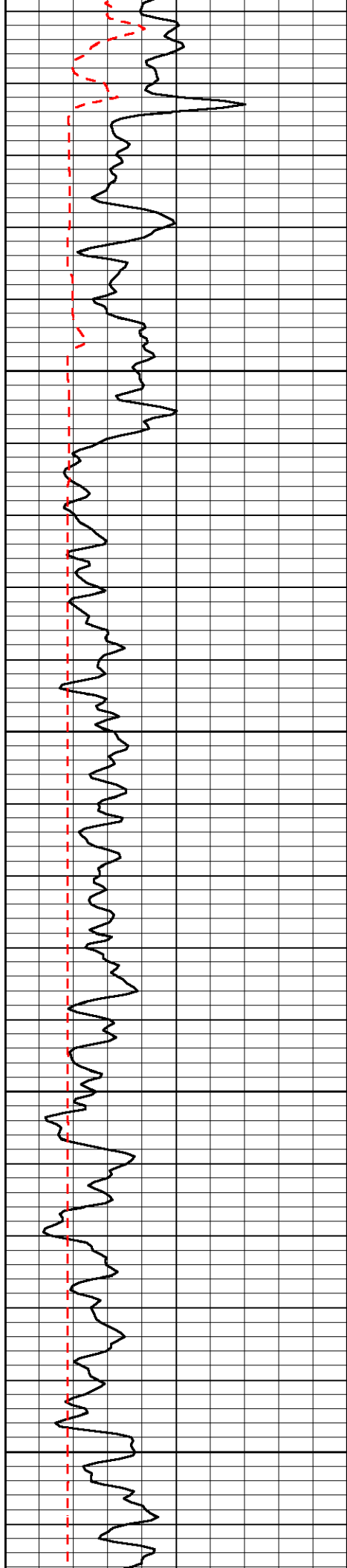


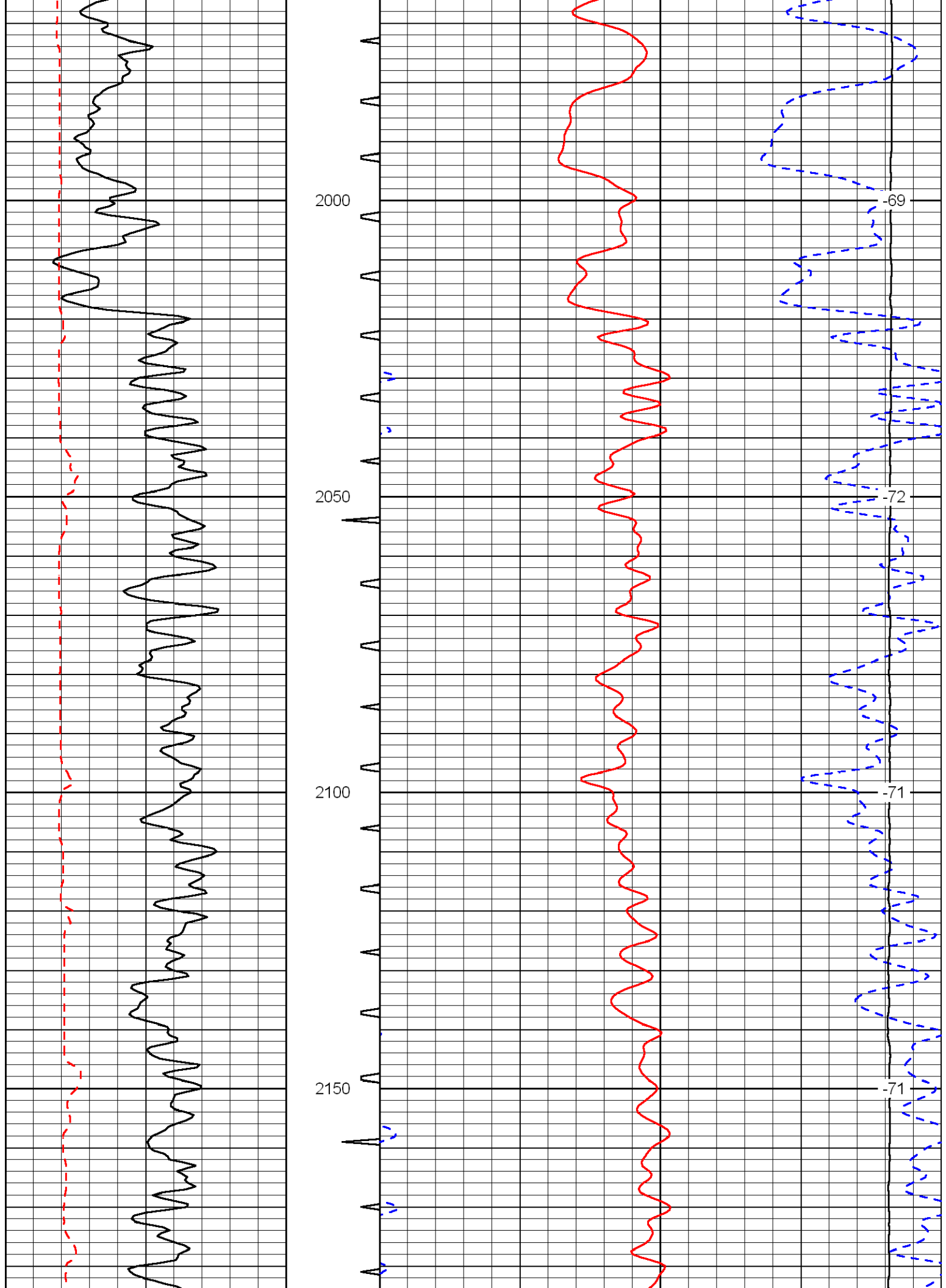


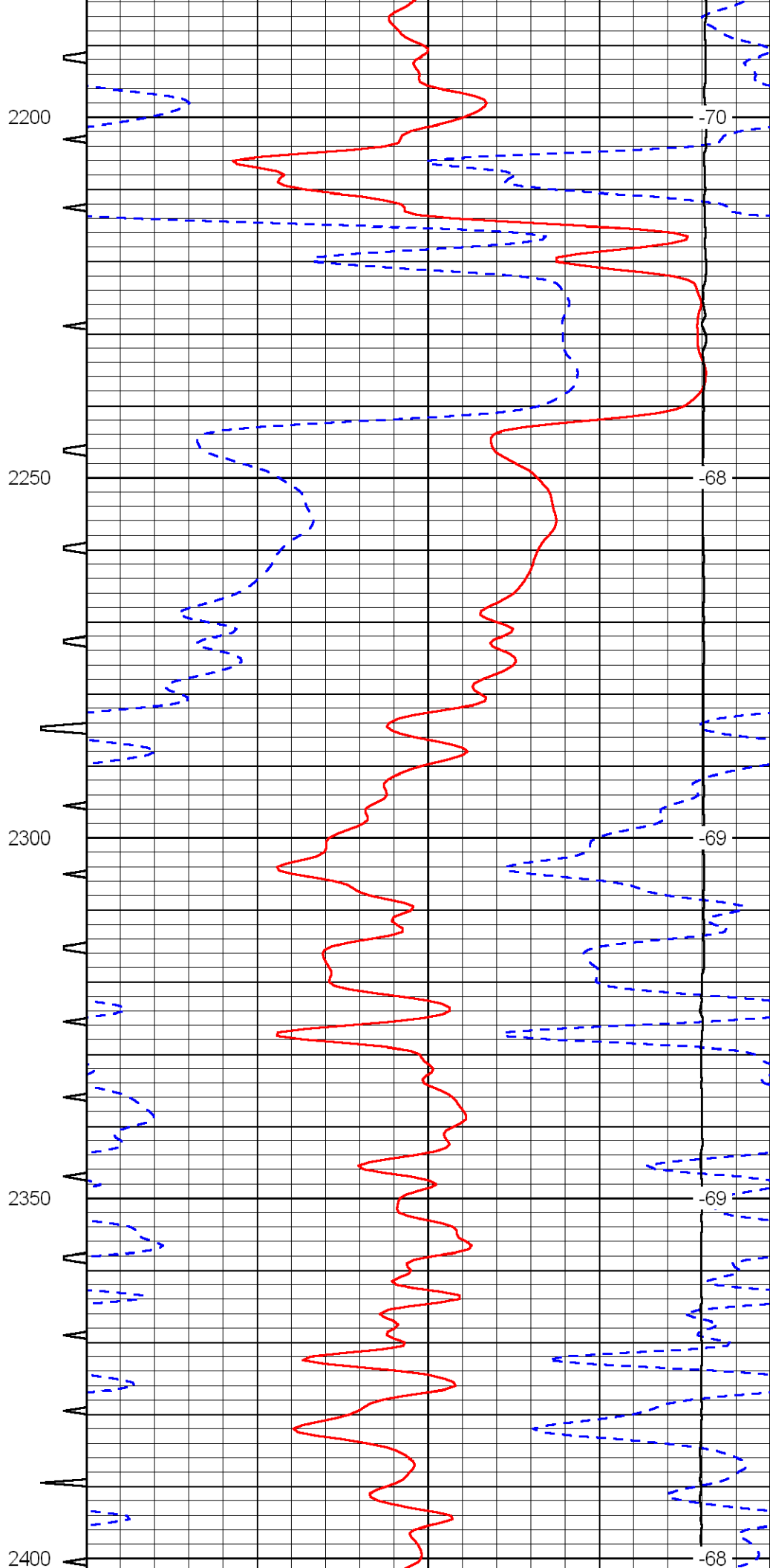
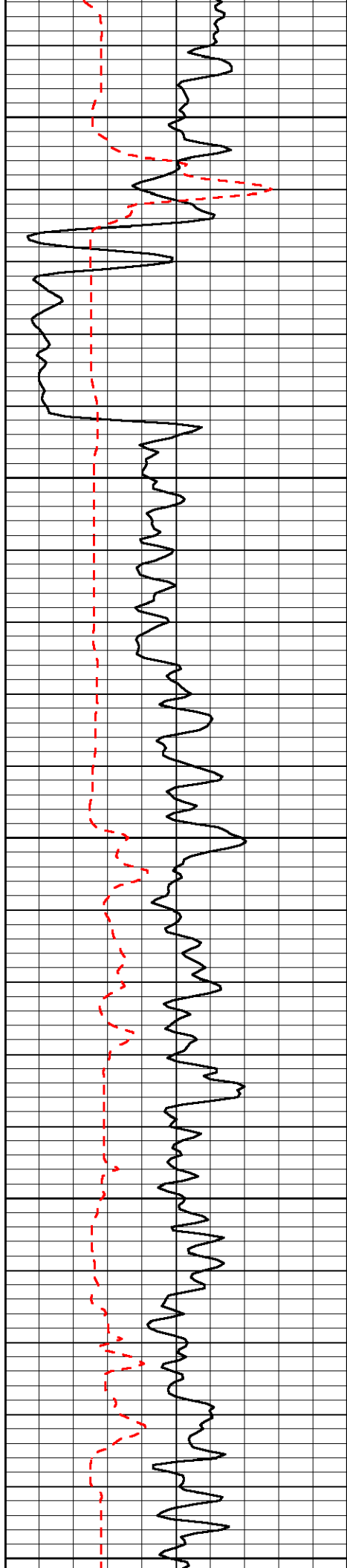


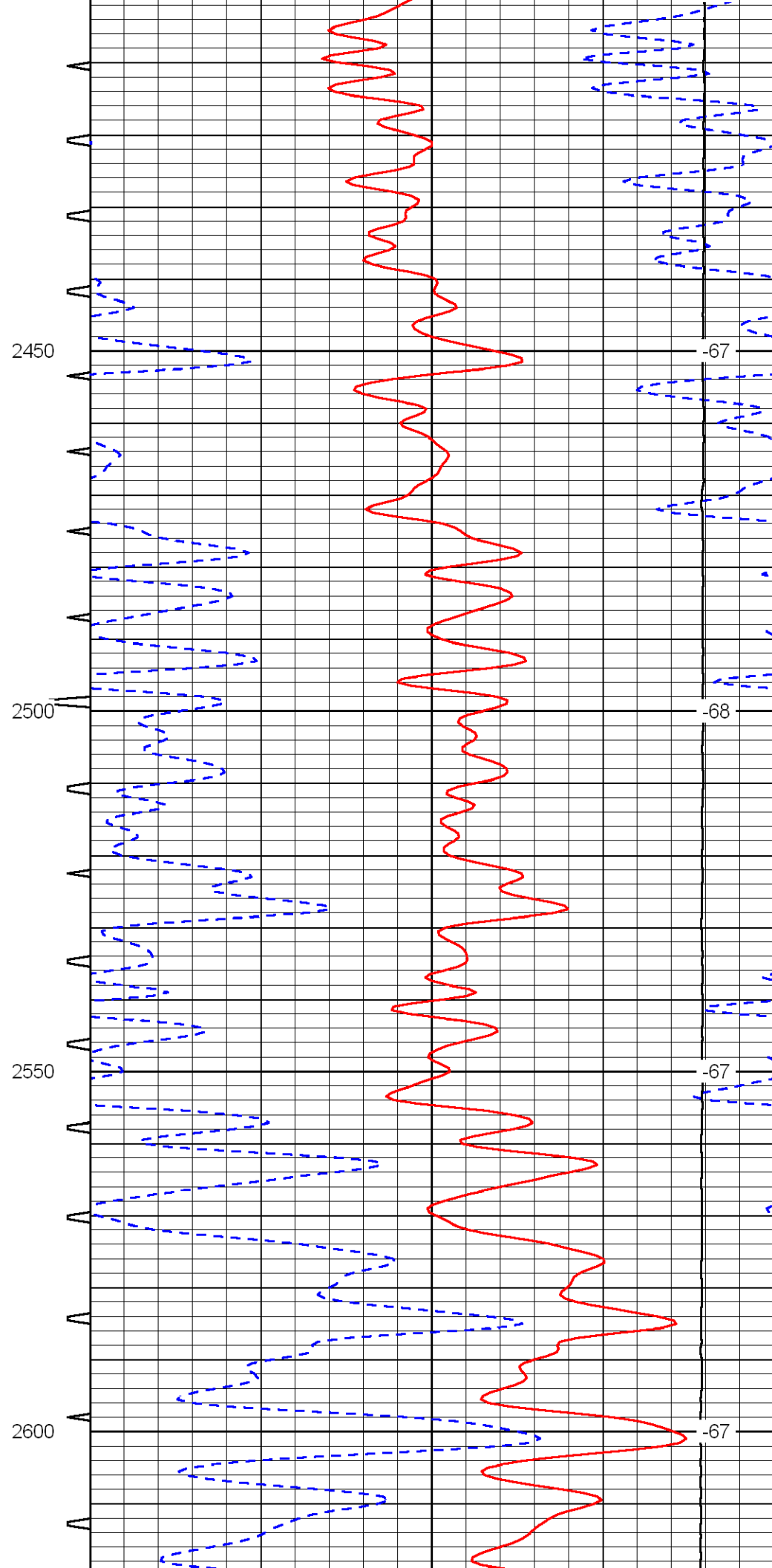
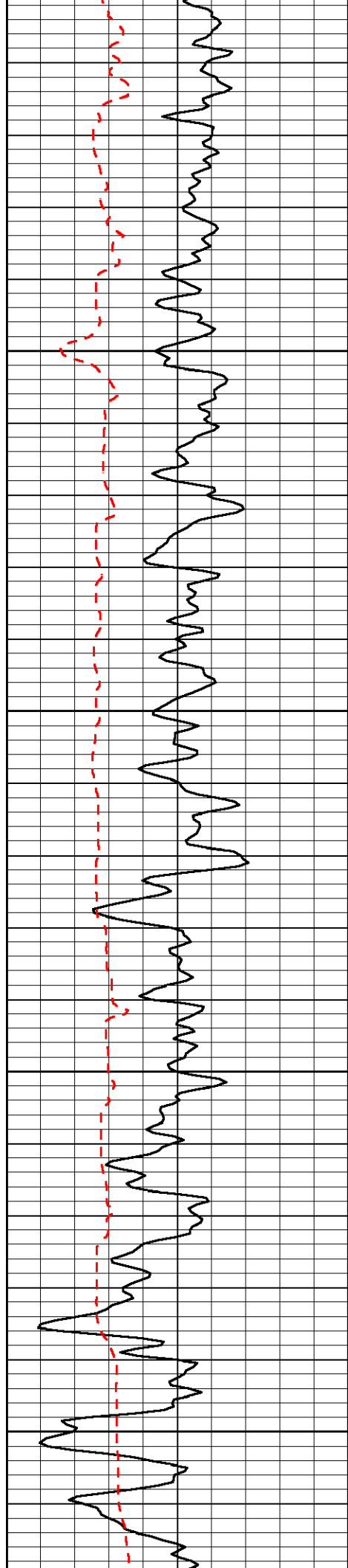


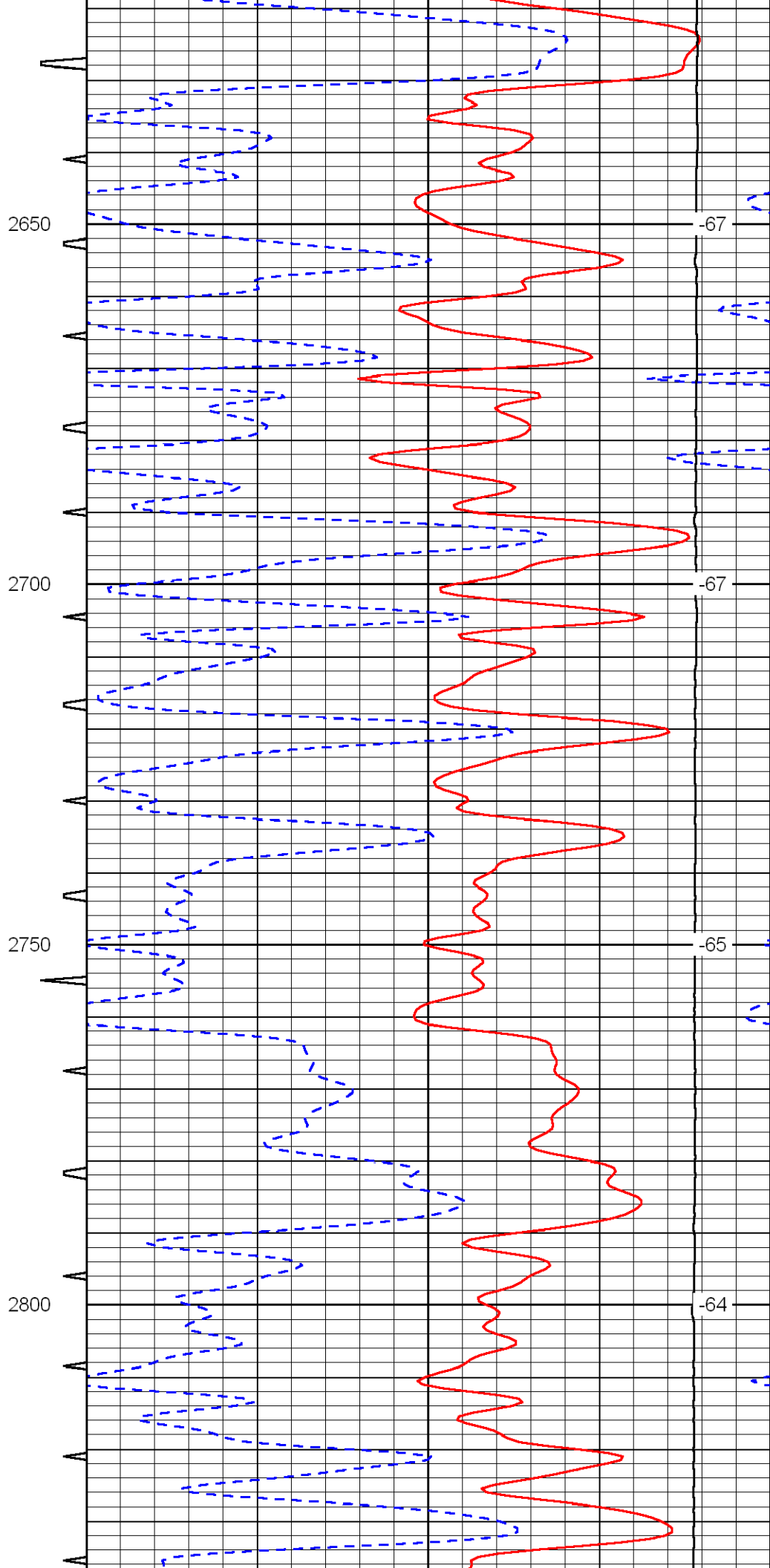
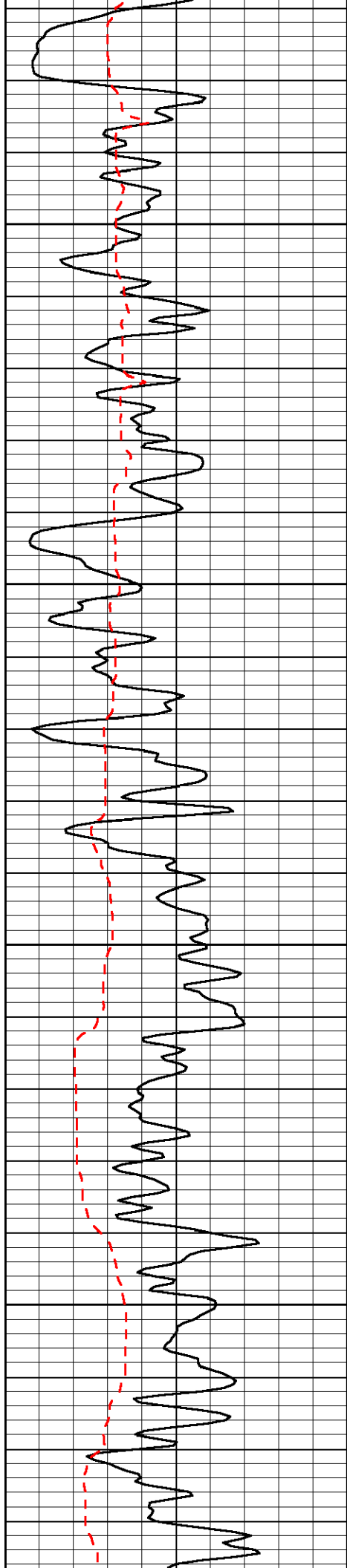


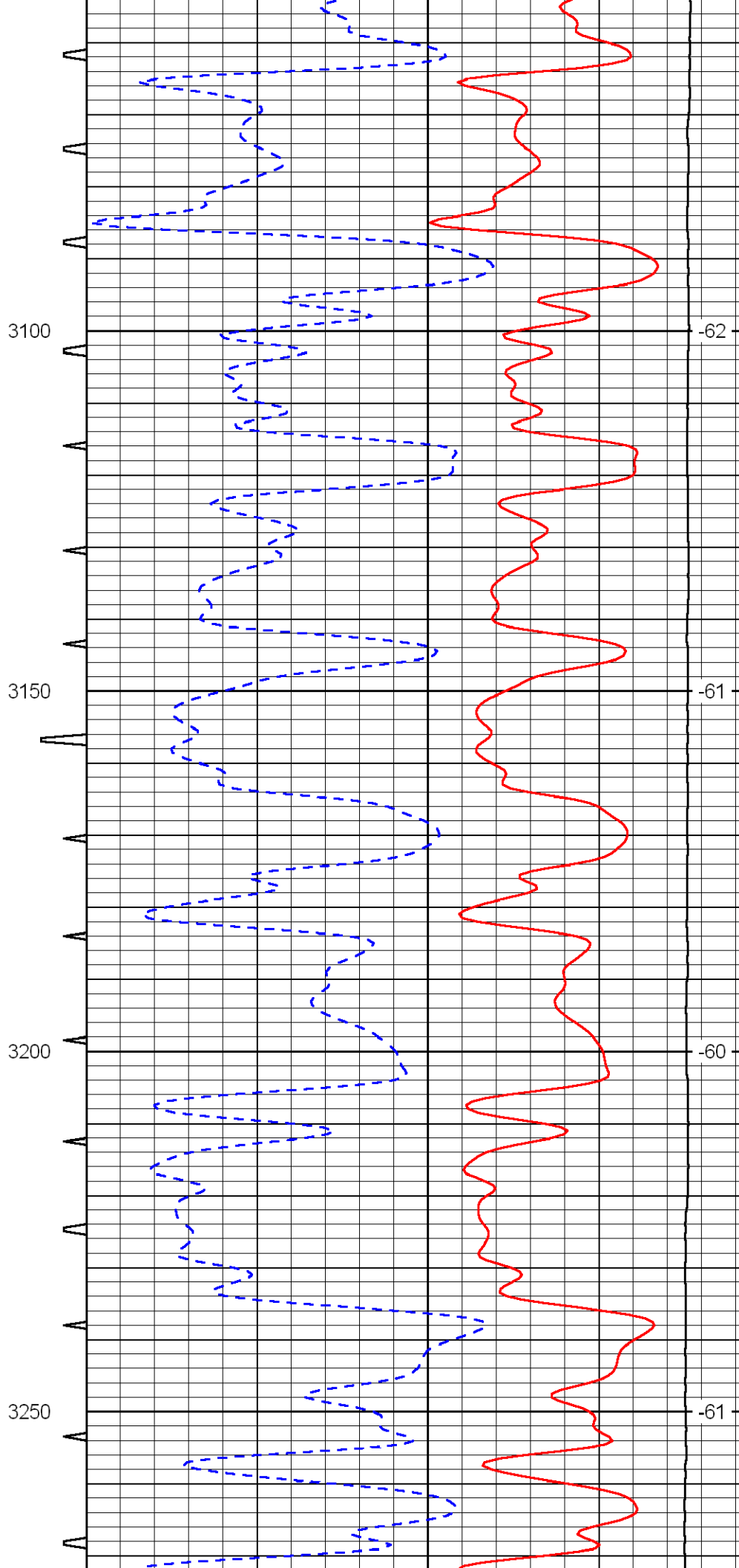
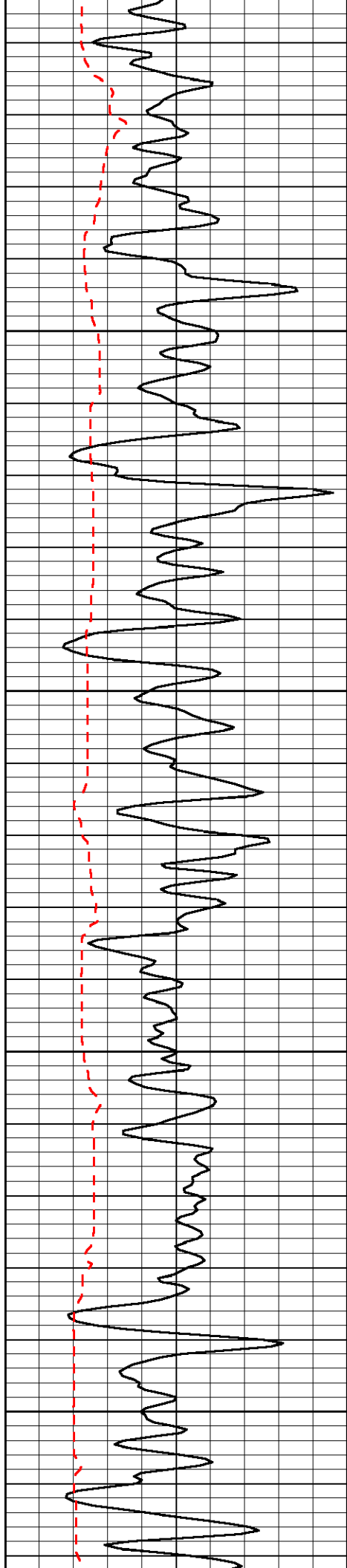


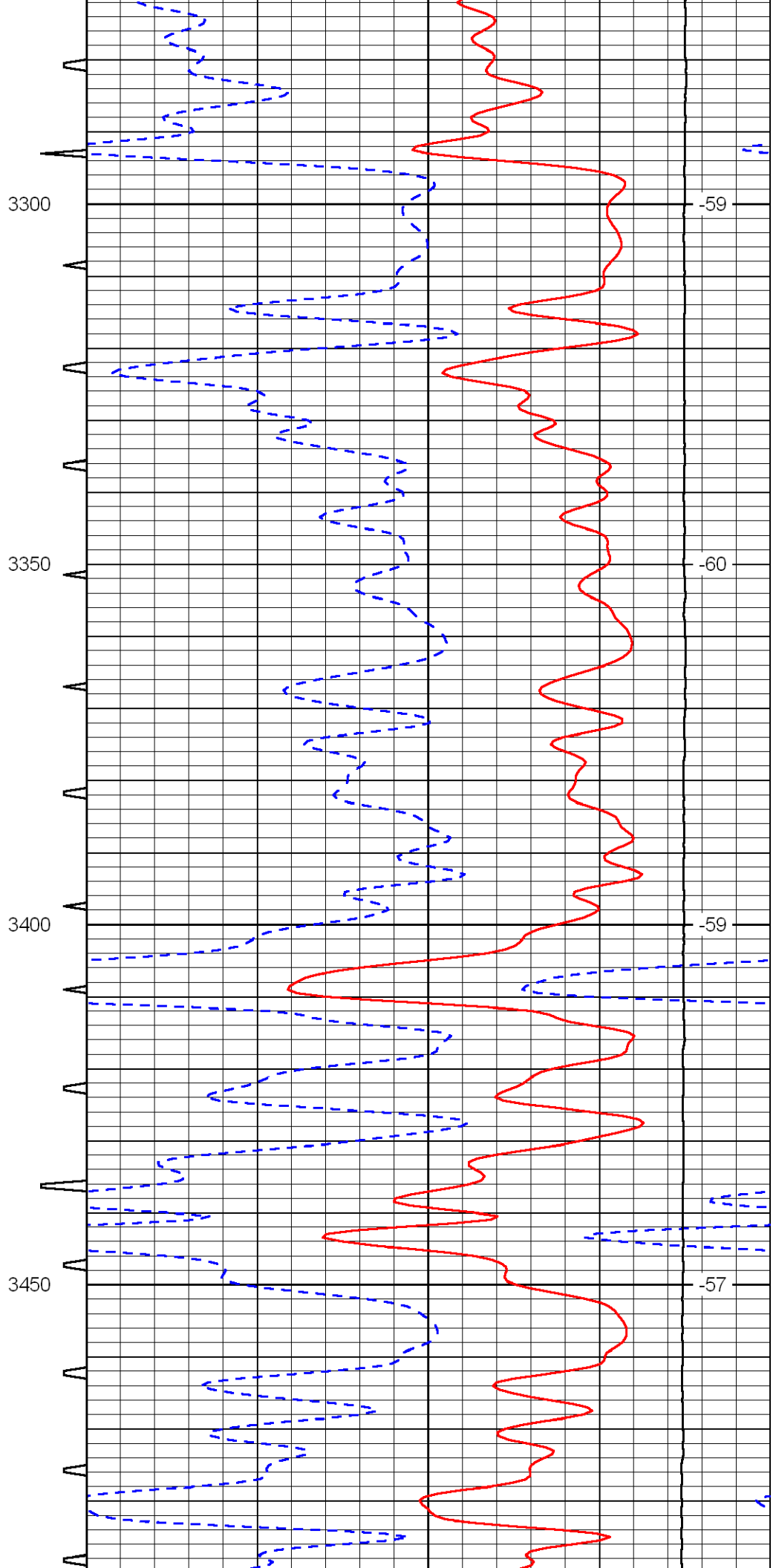
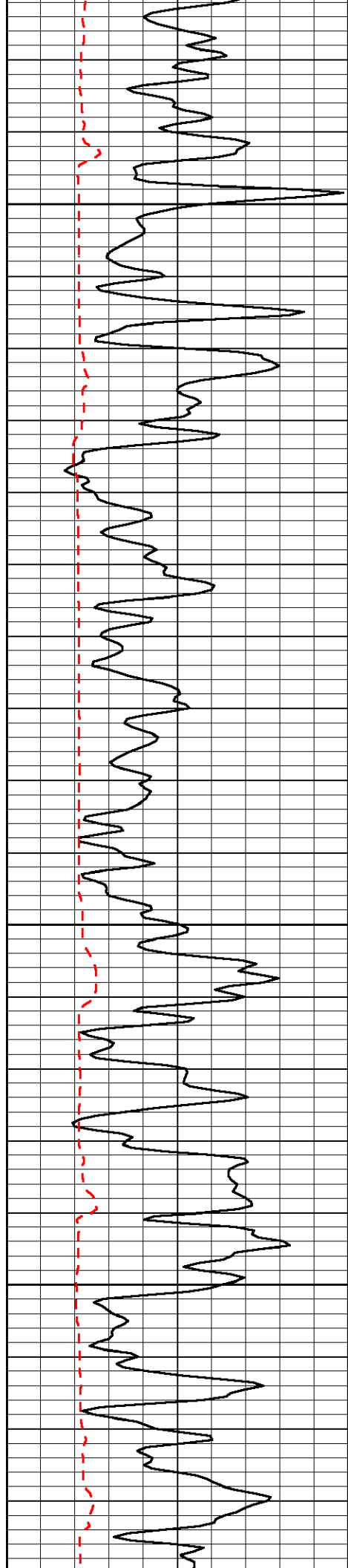


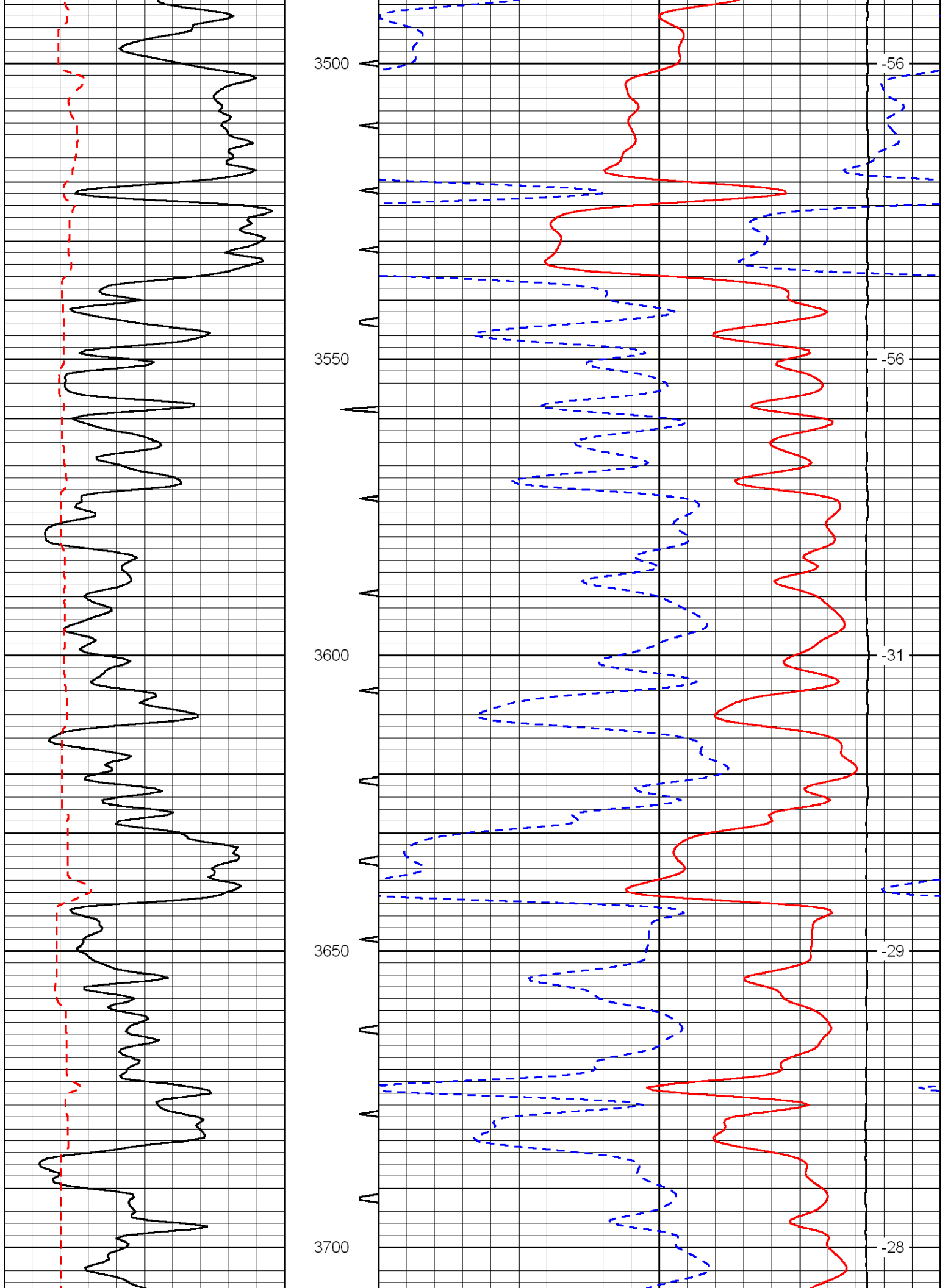


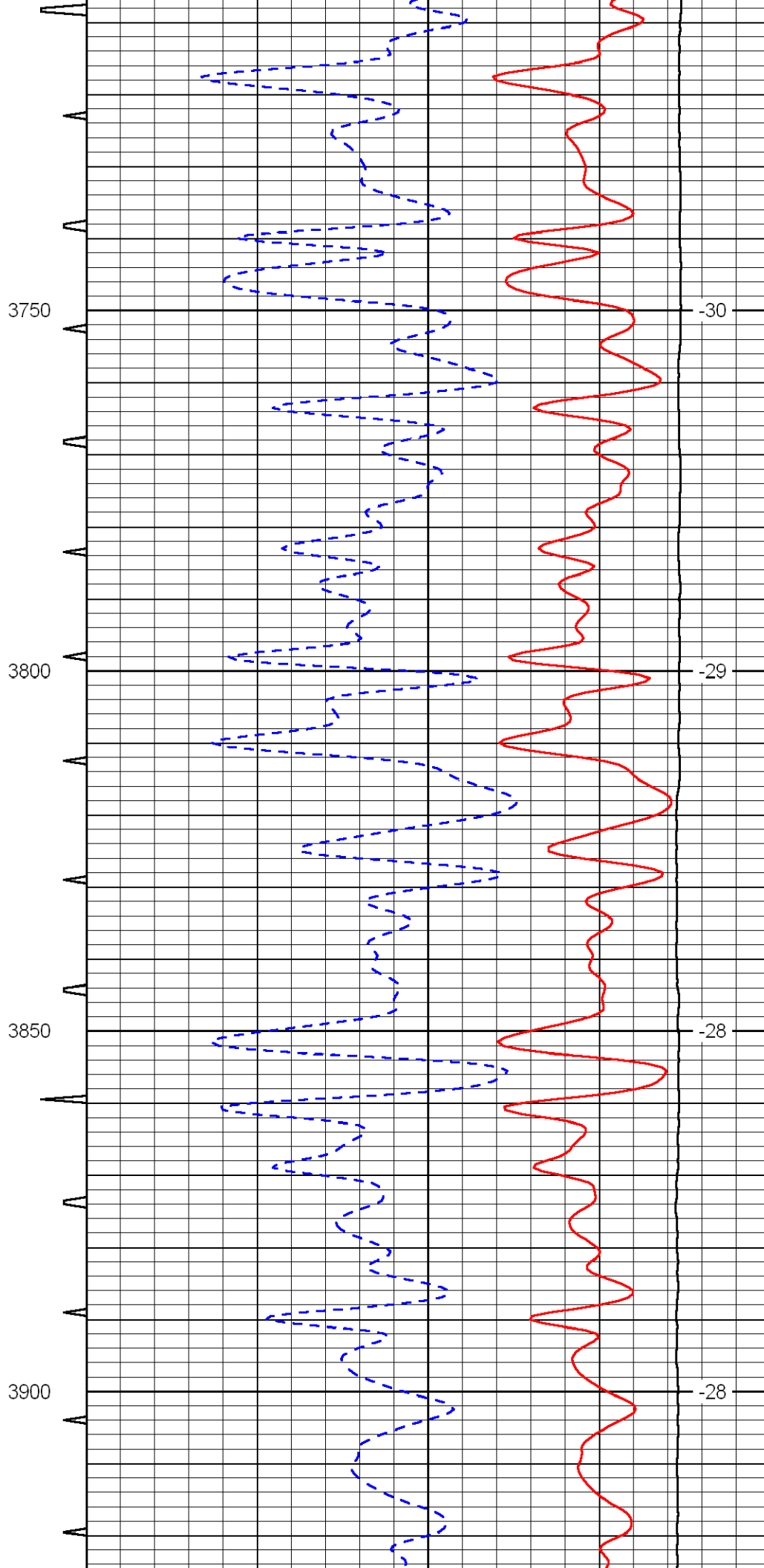
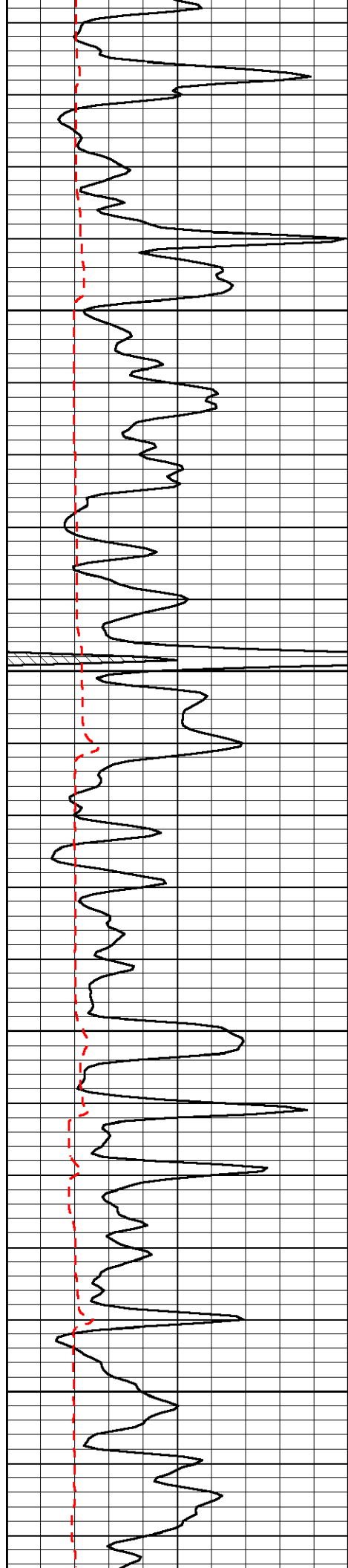


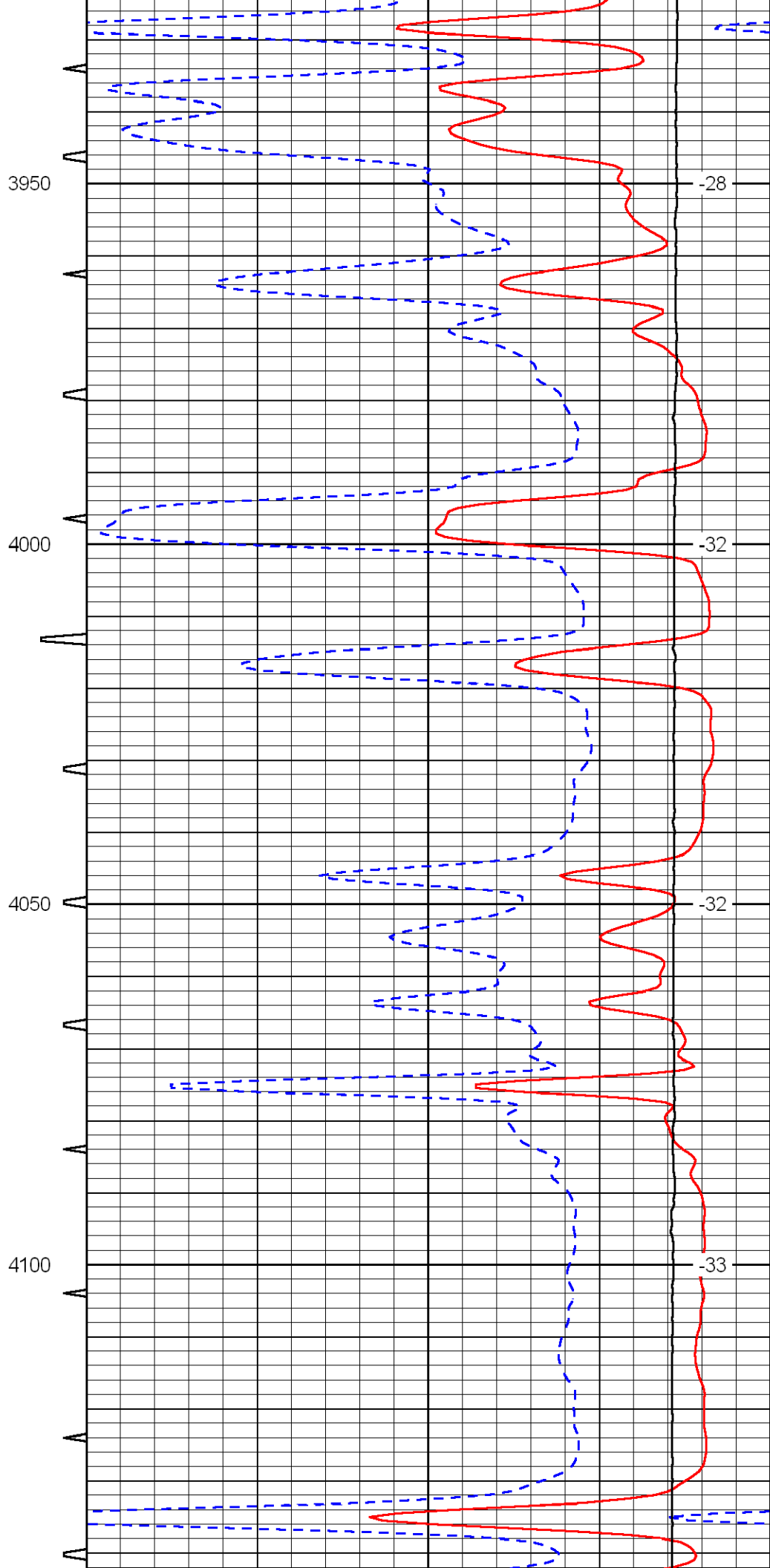
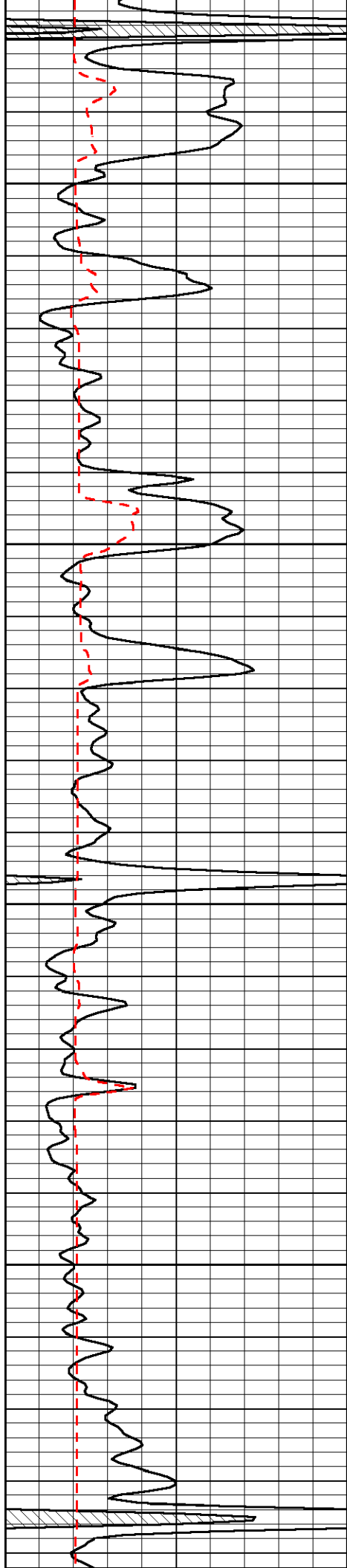


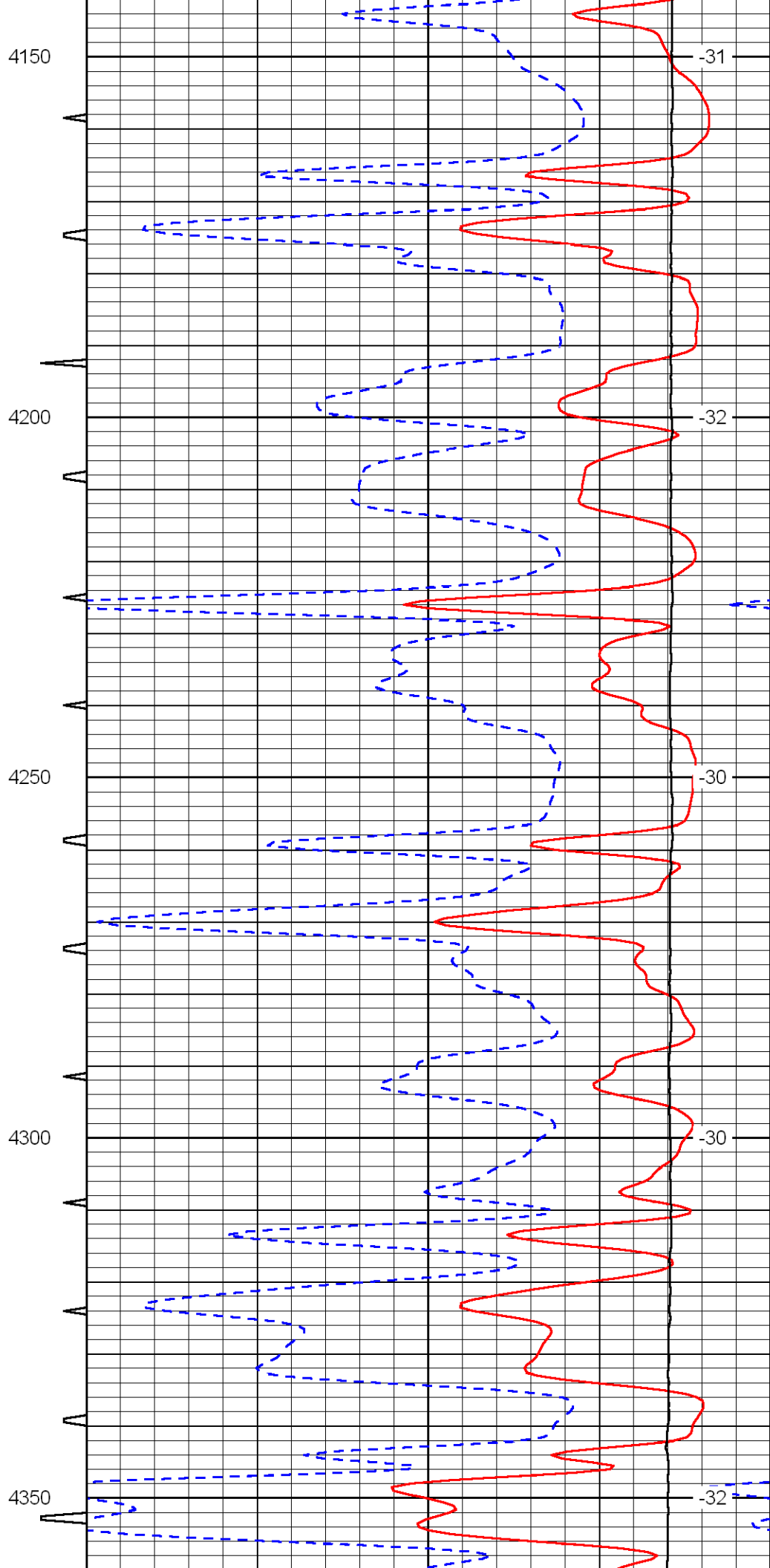
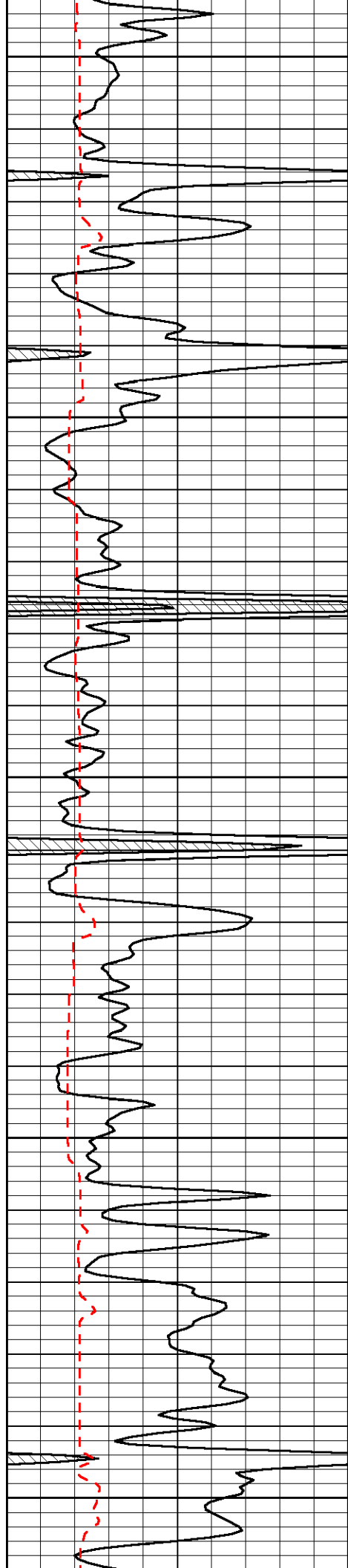


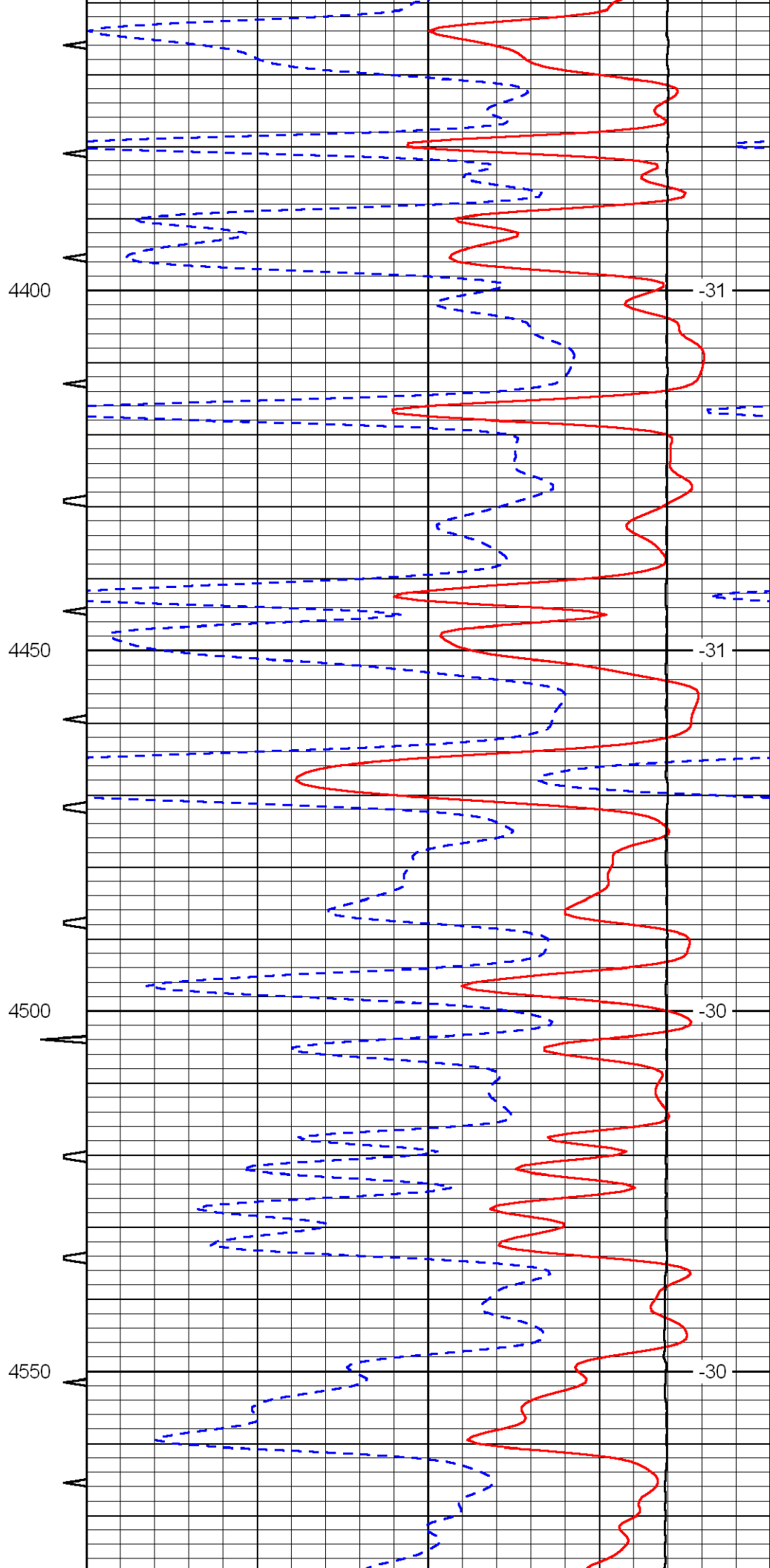
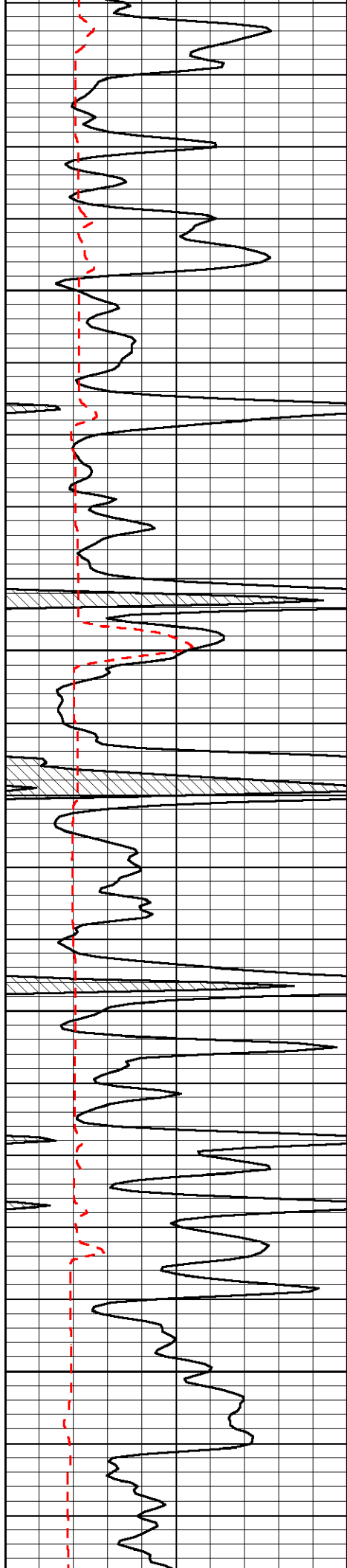


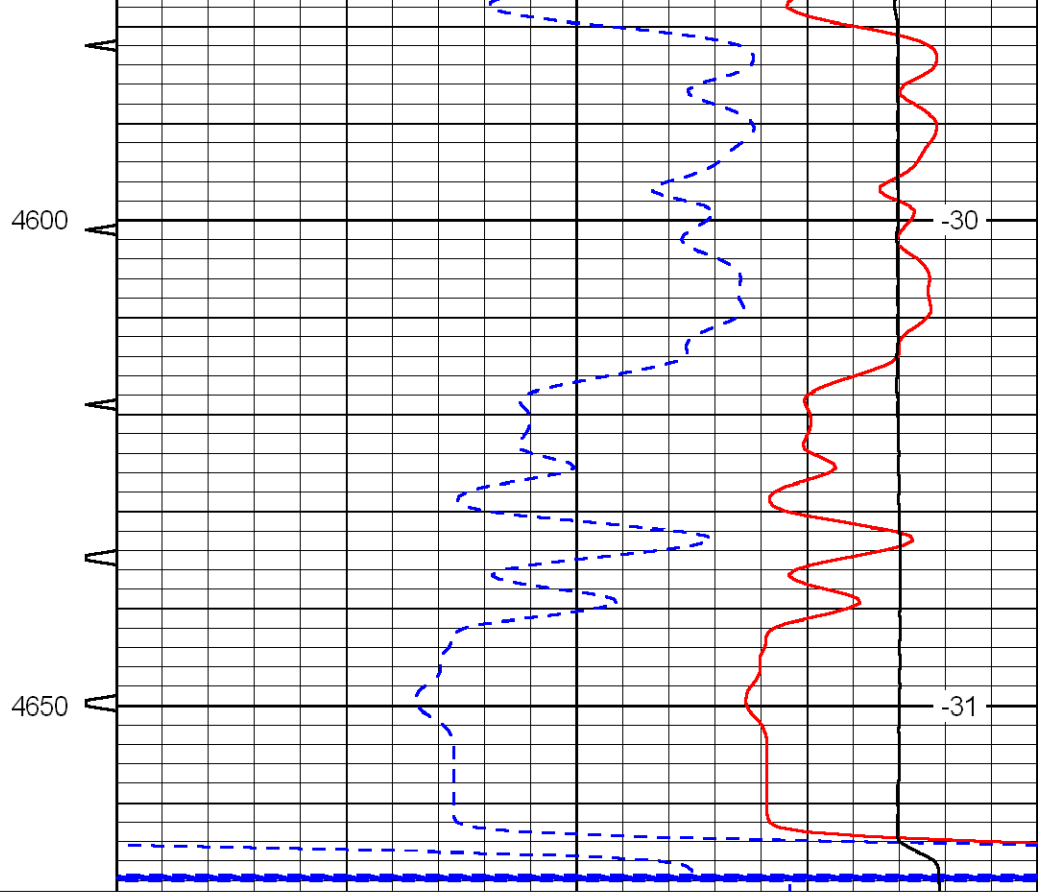
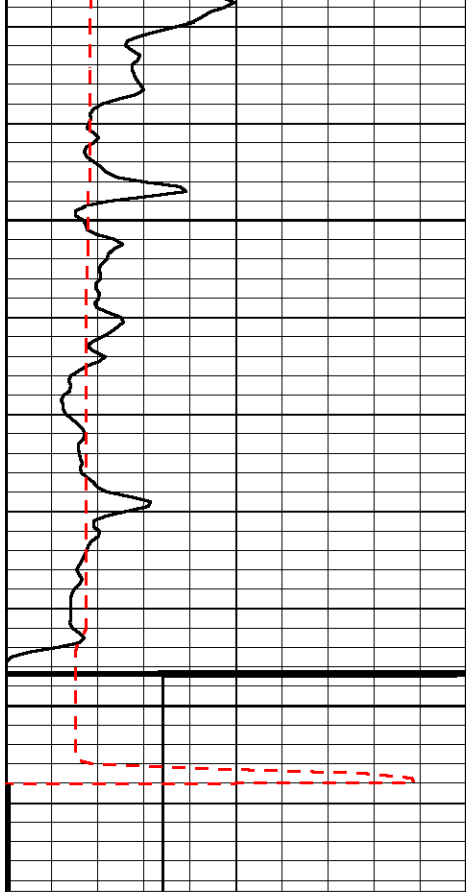












0	Gamma Ray	150
150	Gamma Ray	300
6	dCAL (GAPI)	16

Sonic Int	140	Delta Time (usec/ft)	40
5	0	Sonic Porosity	-10
	30	LTEN (lb)	0
	15000		

LSPD