



# Microresistivity Log

**DIGITAL LOG (785) 625-3858**

API No.

15-101-22,310-00-00

**Company Credo Petroleum Corporation**

**Well Marcelline No. 1-9**

**County Lane State Kansas**

**Location 1420' FNL & 1980' FEL**

**Sec: 9 Twp: 17 S Rge: 29 W**

**Permanent Datum Ground Level Elevation 2815**

**Log Measured From Kelly Bushing 5 Ft. Above Perm. Datum**

**Drilling Measured From Kelly Bushing**

**Date 9/15/2011**

**Run Number Two**

**Depth Driller 4660**

**Depth Logger 4664**

**Bottom Logged Interval 4663**

**Top Log Interval 3600**

**Casing Driller 8.625 @ 260**

**Casing Logger 260**

**Bit Size 7.875**

**Type Fluid in Hole Chemical**

**Salinity, ppm CL 3400**

**Density / Viscosity 9.4 60**

**pH / Fluid Loss 9.0 7.2**

**Source of Sample Flowline**

**Rm @ Meas. Temp .70 @ 74**

**Rmf @ Meas. Temp .52 @ 74**

**Rmc @ Meas. Temp .94 @ 74**

**Source of Rmf / Rmc Charts**

**Rm @ BHT .42 @ 125**

**Operating Rig Time 5 1/2 Hours**

**Max Rec. Temp. F 125**

**Equipment Number 91**

**Location Hays**

**Recorded By D.Kerr**

**Witnessed By Bruce Ard**

**Other Services  
CNL/CDL  
DIL/BHCS  
Elevation  
K.B. 2820  
D.F. 2815  
G.L. 2815**

<<< Fold Here >>>

All interpretations are opinions based on inferences from electrical or other measurements and we cannot and do not guarantee the accuracy or correctness of any interpretation, and we shall not, except in the case of gross or willful negligence on our part, be liable or responsible for any loss, costs, damages, or expenses incurred or sustained by anyone resulting from any interpretation made by any of our officers, agents or employees. These interpretations are also subject to our general terms and conditions set out in our current Price Schedule.

**Comments**

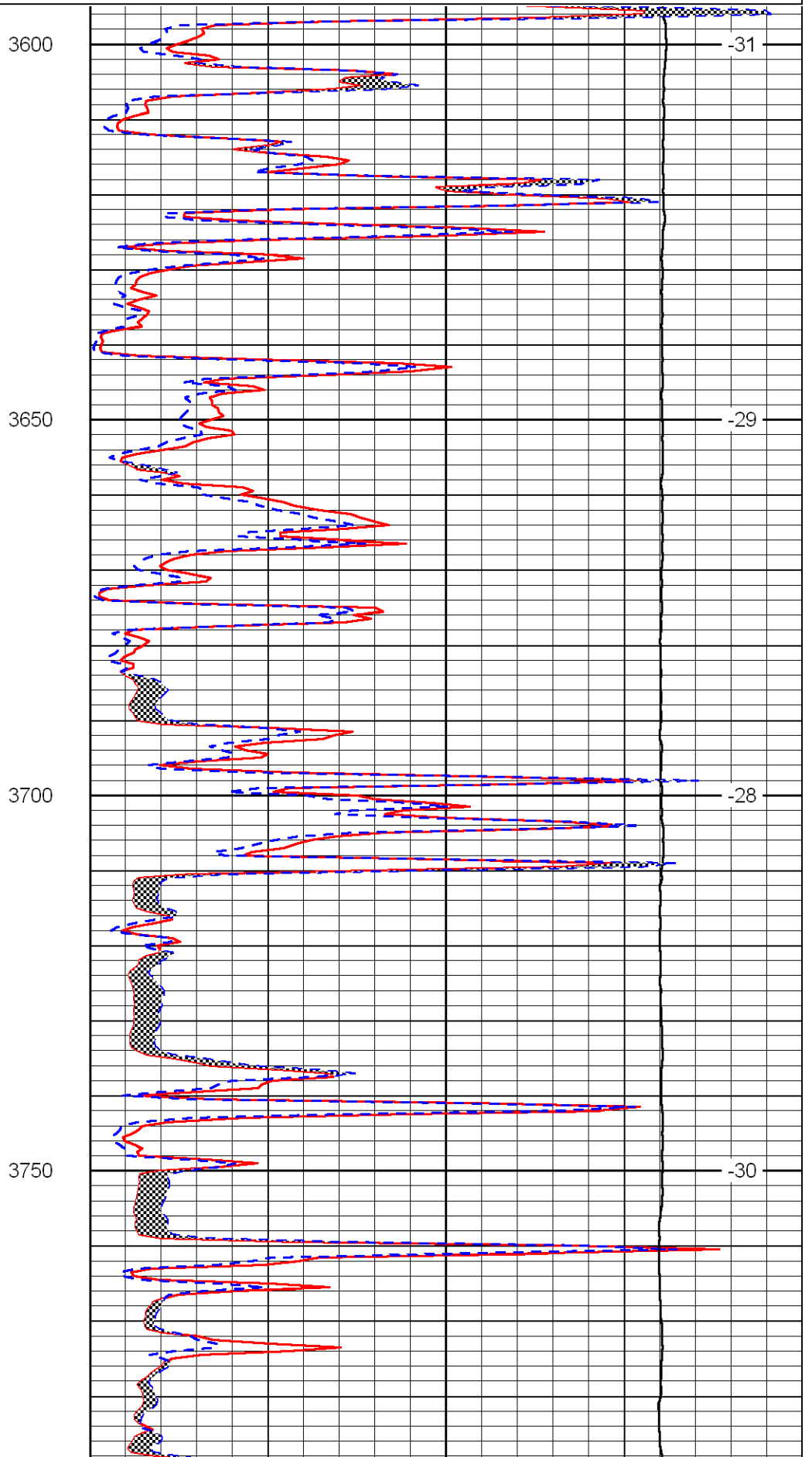
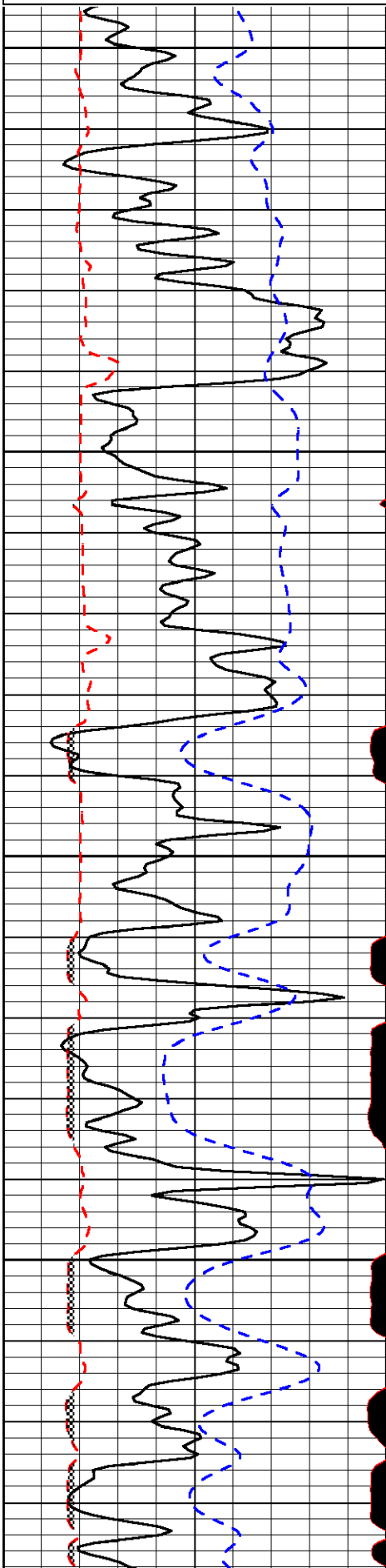
Thank you for using Log-Tech, Inc.  
(785) 625-3858

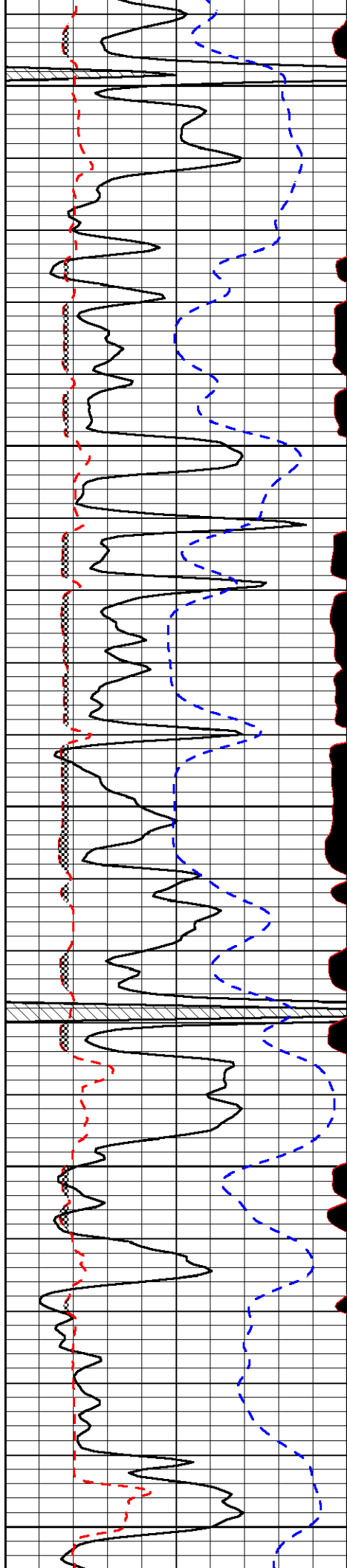
Shields KS, West to HWY 4 and HWY 23,  
2 South, 2 1/4 West, 1/2 South, East Into

Database File: credo\_091511hd.db  
Dataset Pathname: DIL/credstk  
Presentation Format: micro  
Dataset Creation: Fri Sep 16 00:36:50 2011  
Charted by: Depth in Feet scaled 1:240

0	Gamma Ray	150
6	MCAL (GAPI)	16
2.875	Mud Cake (GAPI)	7.875
-200	SP	0

0	Micro Inverse 1 X 1	100
0	Micro Normal 2"	100
10000	Line Weight	0
		LSPD





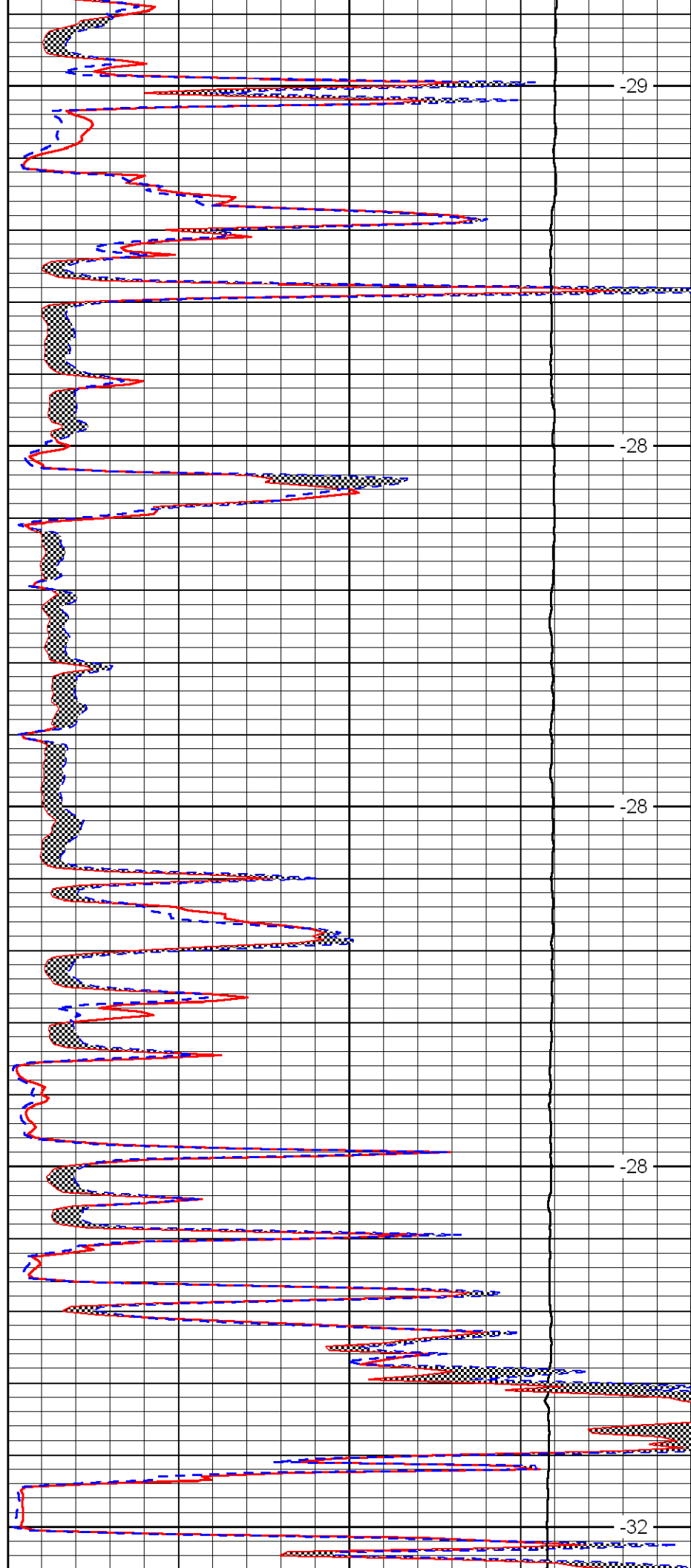
3800

3850

3900

3950

4000



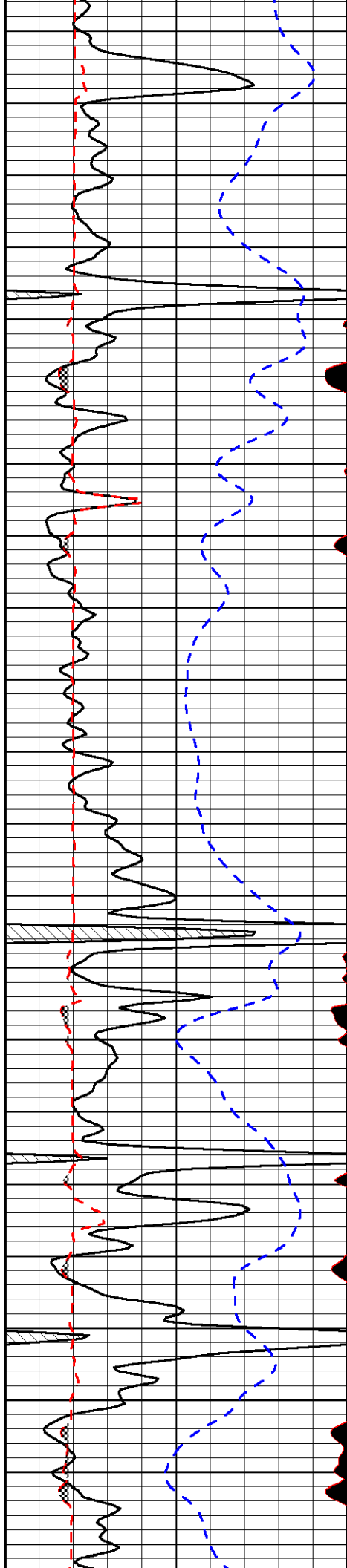
-29

-28

-28

-28

-32

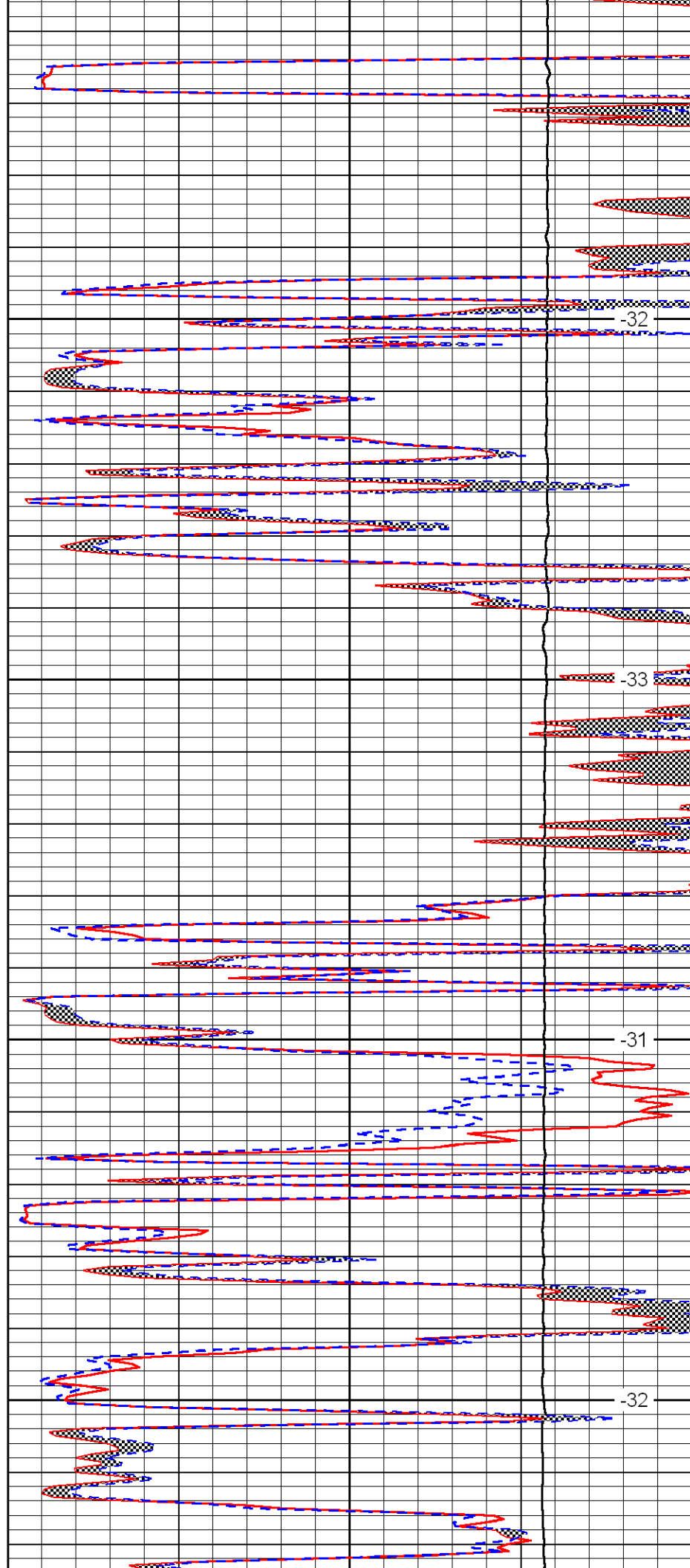


4050

4100

4150

4200

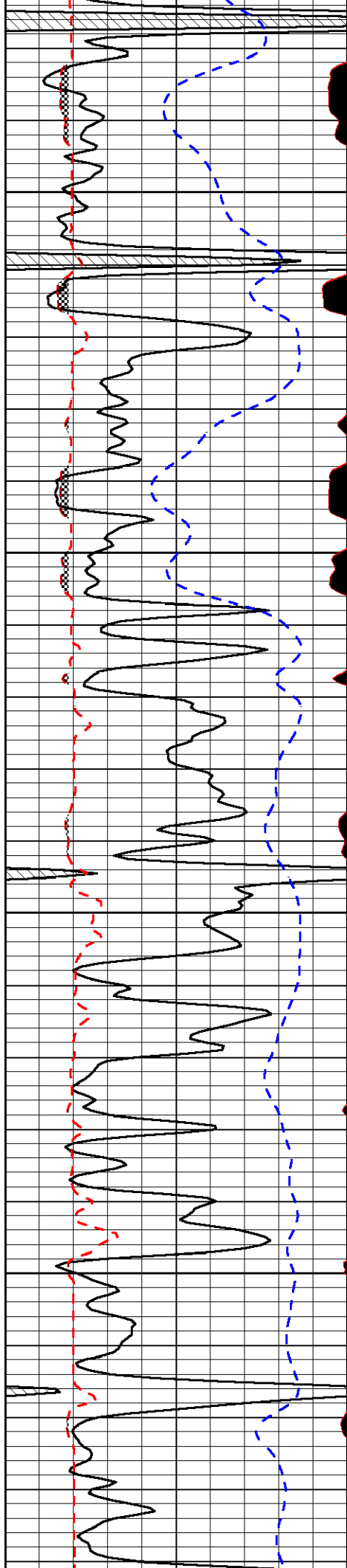


-32

-33

-31

-32

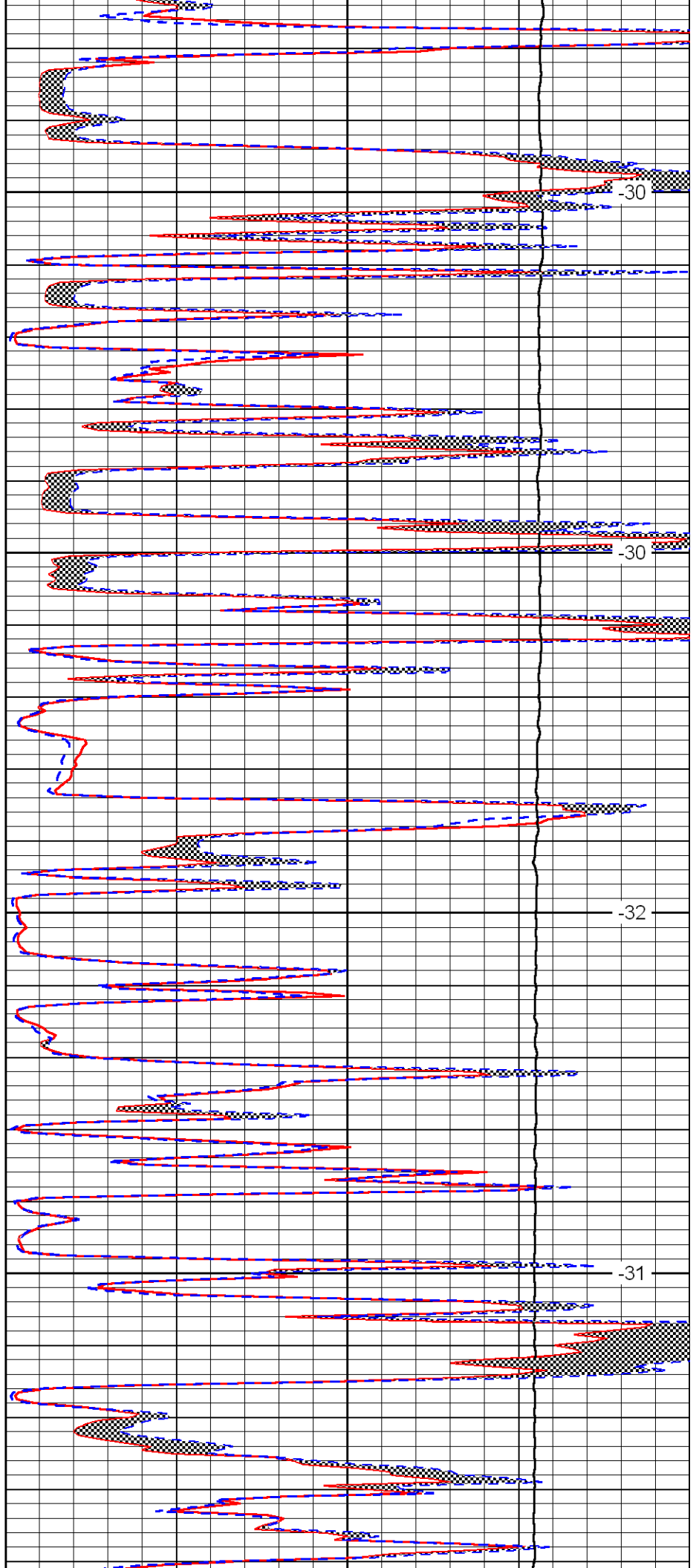


4250

4300

4350

4400

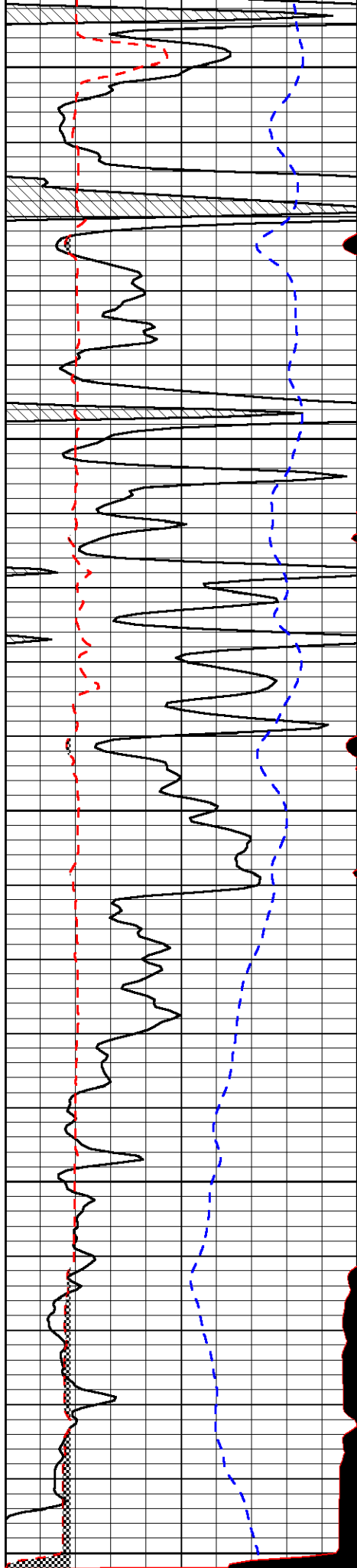


-30

-30

-32

-31



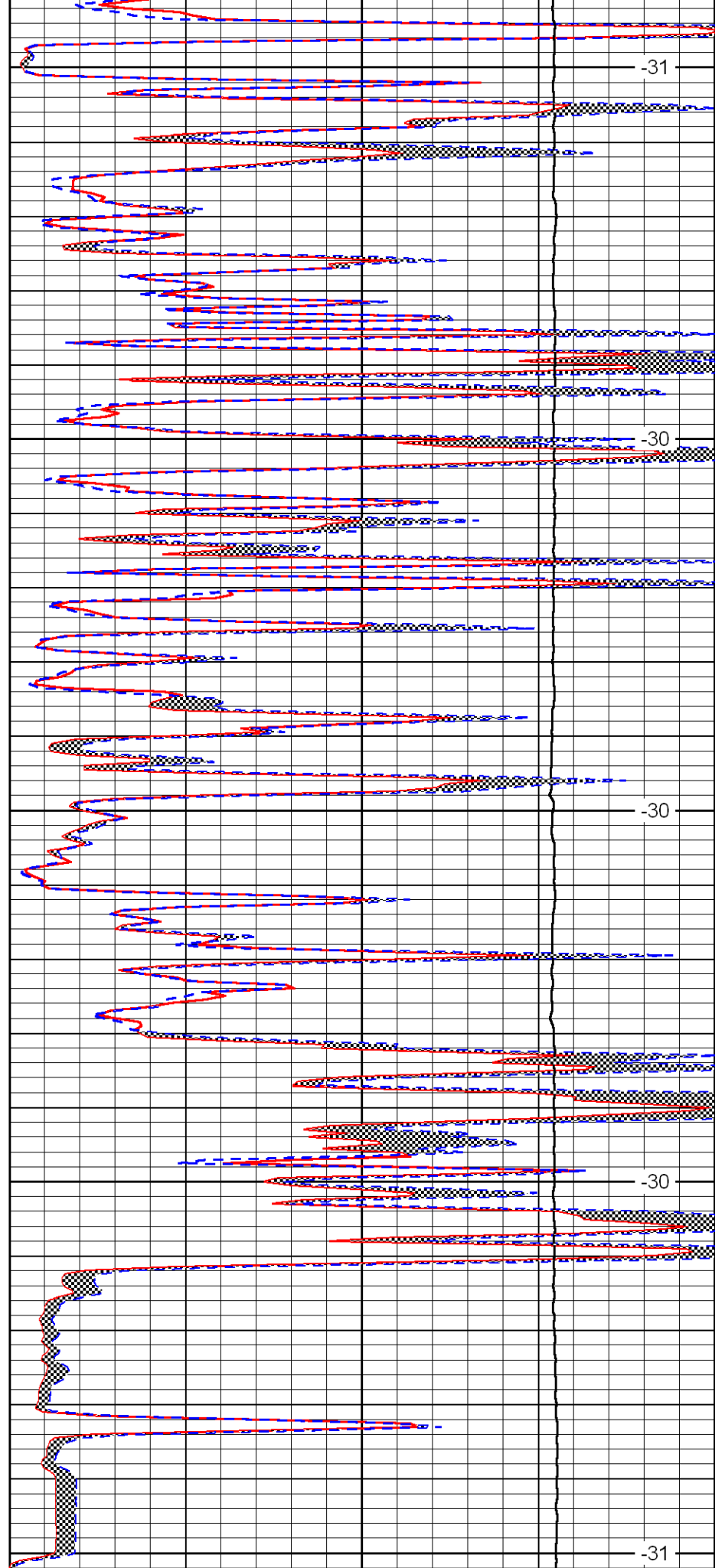
4450

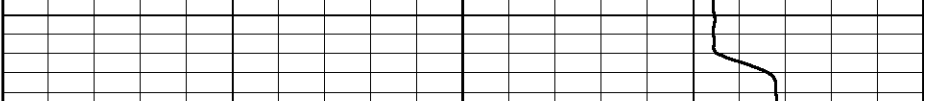
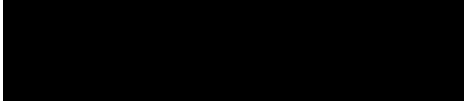
4500

4550

4600

4650





0	Gamma Ray	150
6	MCAL (GAPI)	16
2.875	Mud Cake (GAPI)	7.875
-200	SP	0

0	Micro Inverse 1 X 1	100
0	Micro Normal 2"	100
10000	Line Weight	0
		LSPD