



DIGITAL LOG (785) 625-3858

Microresistivity Log

15-023-21,333-00-00

API No.

Company Credo Petroleum Corporation  
 Well Gly No. 1-25  
 Field Little Beaver Creek North  
 County Cheyenne State Kansas

Location 1980' FNL & 2055' FEL  
 Sec: 25 Twp: 4 S Rge: 37 W

Other Services  
 CNL/CDL  
 DIL

Permanent Datum Ground Level Elevation 3325  
 Log Measured From Kelly Bushing 5 Ft. Above Perm. Datum  
 Drilling Measured From Kelly Bushing

Elevation  
 K.B. 3330  
 D.F. 3325  
 G.L. 3325

Date	9/12/2011
Run Number	One
Depth Driller	4770
Depth Logger	4770
Bottom Logged Interval	4769
Top Log Interval	2950
Casing Driller	8.625 @ 297
Casing Logger	302
Bit Size	7.875
Type Fluid in Hole	Chemical
Salinity, ppm CL	3500
Density / Viscosity	9.2 66
pH / Fluid Loss	10.5 7.2
Source of Sample	Flowline
Rm @ Meas. Temp	.71 @ 78
Rmf @ Meas. Temp	.53 @ 78
Rmc @ Meas. Temp	.95 @ 78
Source of Rmf / Rmc	Charts
Rm @ BHT	.44 @ 126
Operating Rig Time	4 1/2 Hours
Max Rec. Temp. F	126
Equipment Number	91
Location	Hays
Recorded By	D.Kerr
Witnessed By	Clayton Ericson

<<< Fold Here >>>

All interpretations are opinions based on inferences from electrical or other measurements and we cannot and do not guarantee the accuracy or correctness of any interpretation, and we shall not, except in the case of gross or willful negligence on our part, be liable or responsible for any loss, costs, damages, or expenses incurred or sustained by anyone resulting from any interpretation made by any of our officers, agents or employees. These interpretations are also subject to our general terms and conditions set out in our current Price Schedule.

Comments

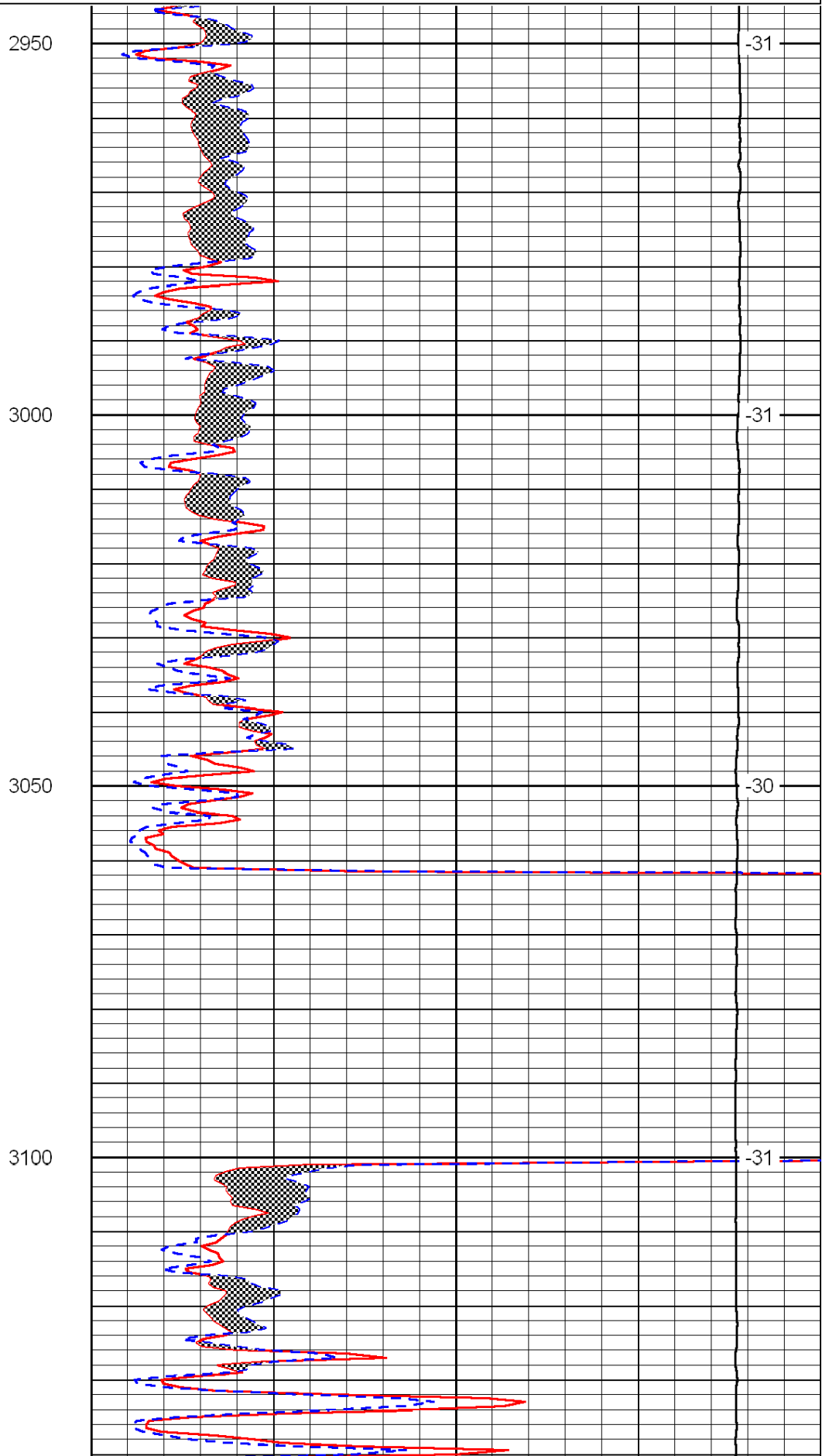
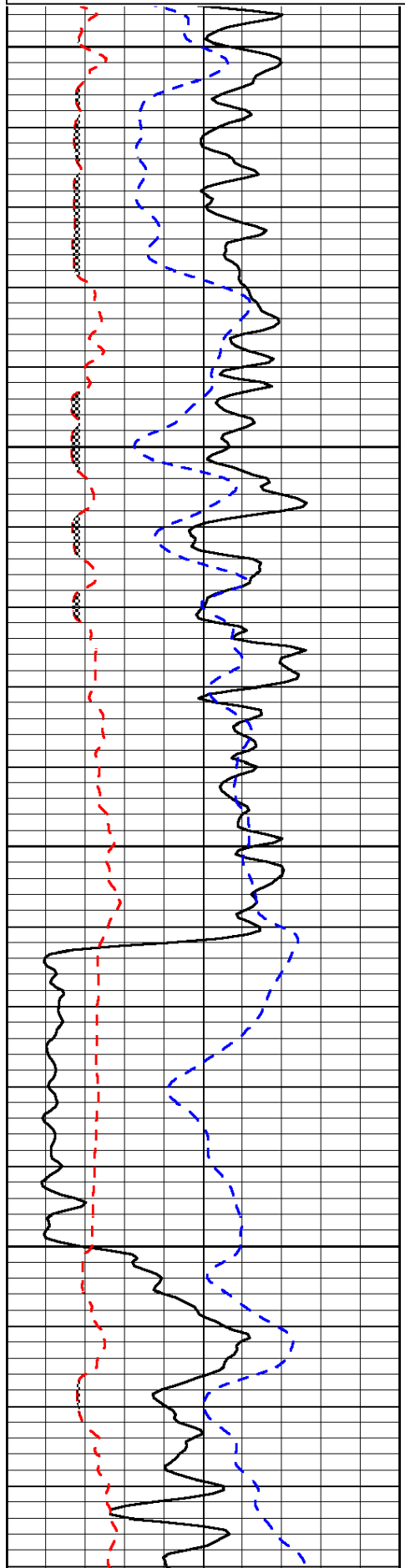
Thank you for using Log-Tech, Inc.  
 (785) 625-3858  
 McDonald KS, 7 1/2 South to H RD,  
 2 West, 1/2 North, West Into

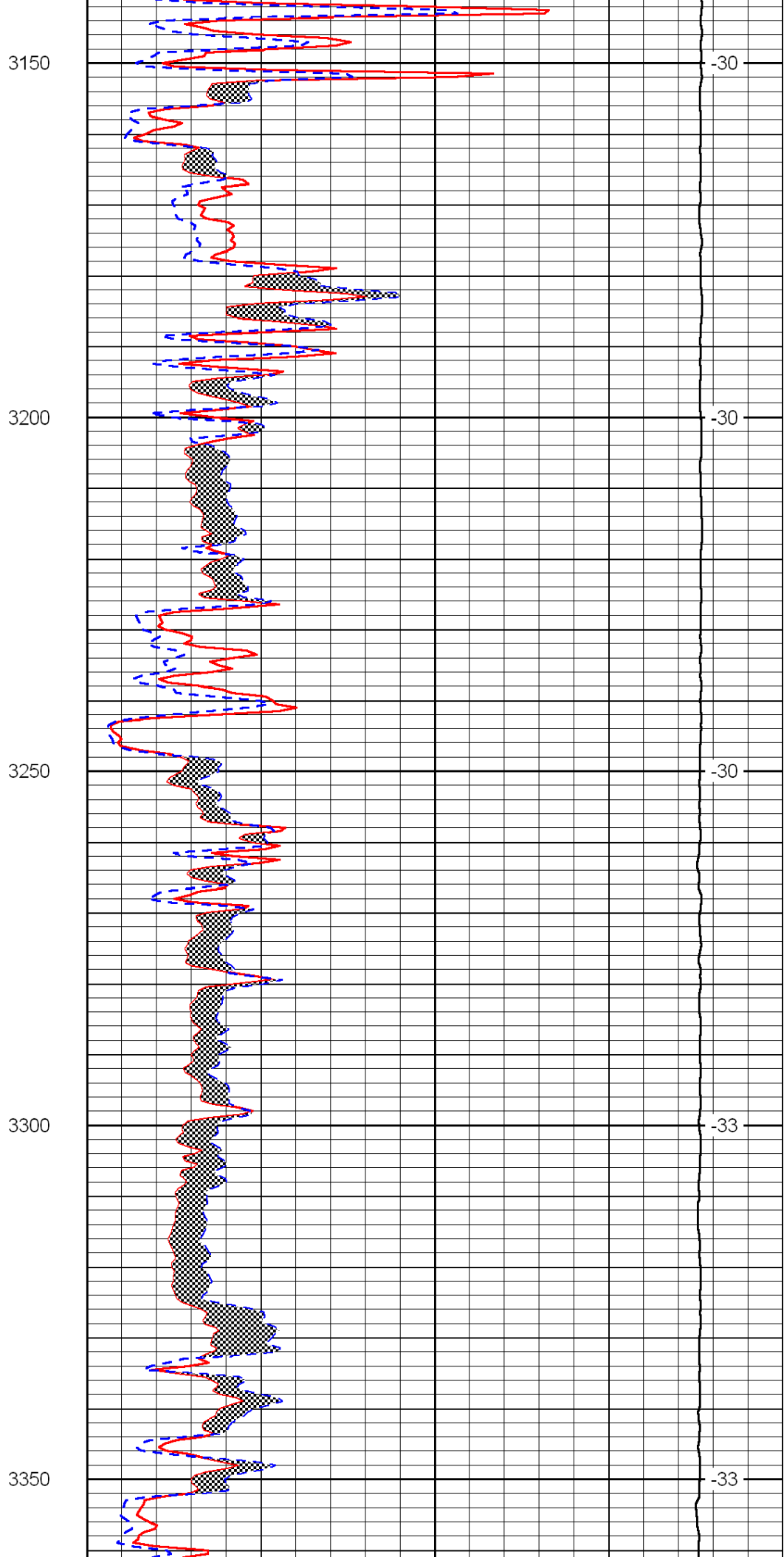
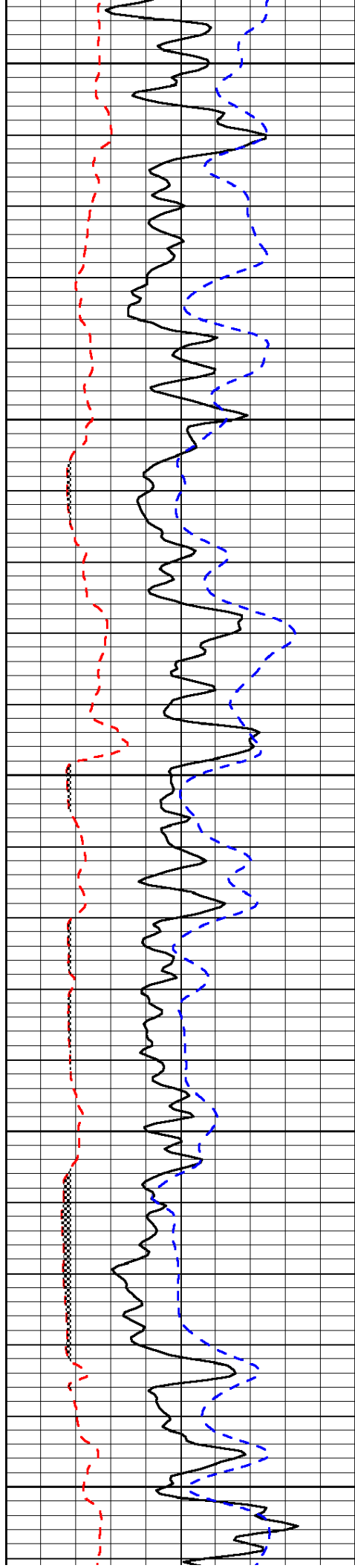
Database File: c:\warrior\data\credo\_gly no. 1-25\credo\_091211hd.db  
 Dataset Pathname: DIL/credstk  
 Presentation Format: micro  
 Dataset Creation: Mon Sep 12 13:29:36 2011  
 Charted by: Depth in Feet scaled 1:240

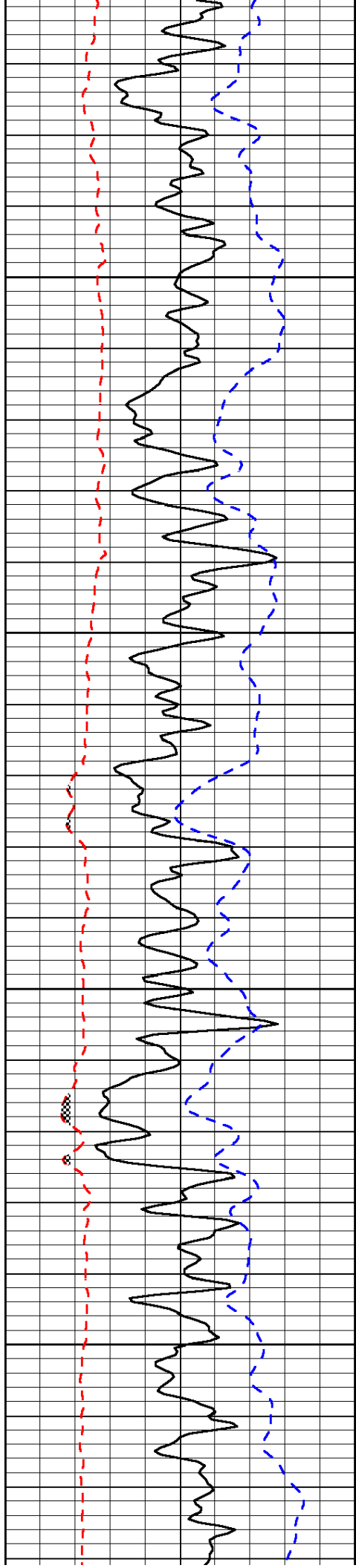
0	Gamma Ray	150
6	Micro Log Caliper (GAPI)	16
-200	SP (mV)	0

0	Micro Inverse 1 X 1	40
0	Micro Normal 2"	40
15000	Line Weight	0

LSPD





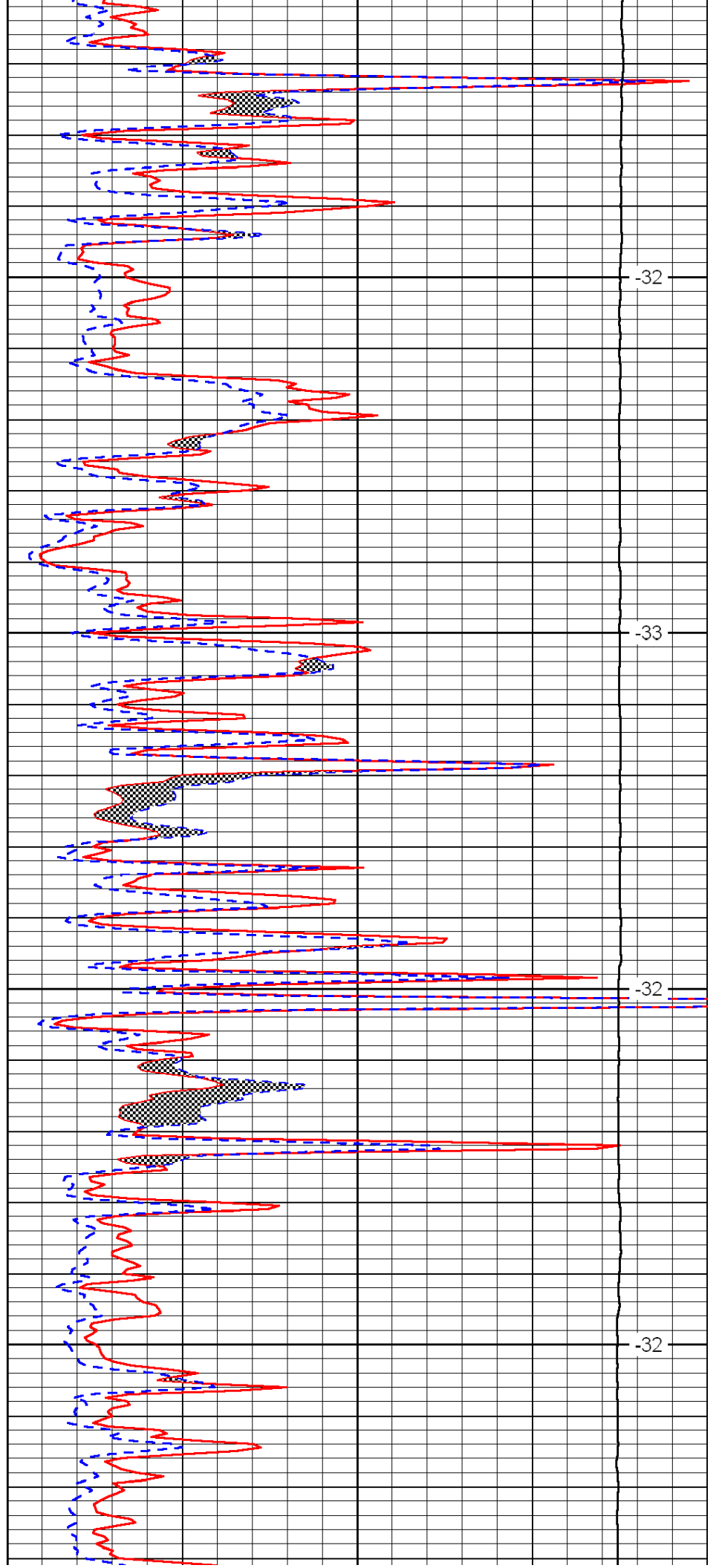


3400

3450

3500

3550

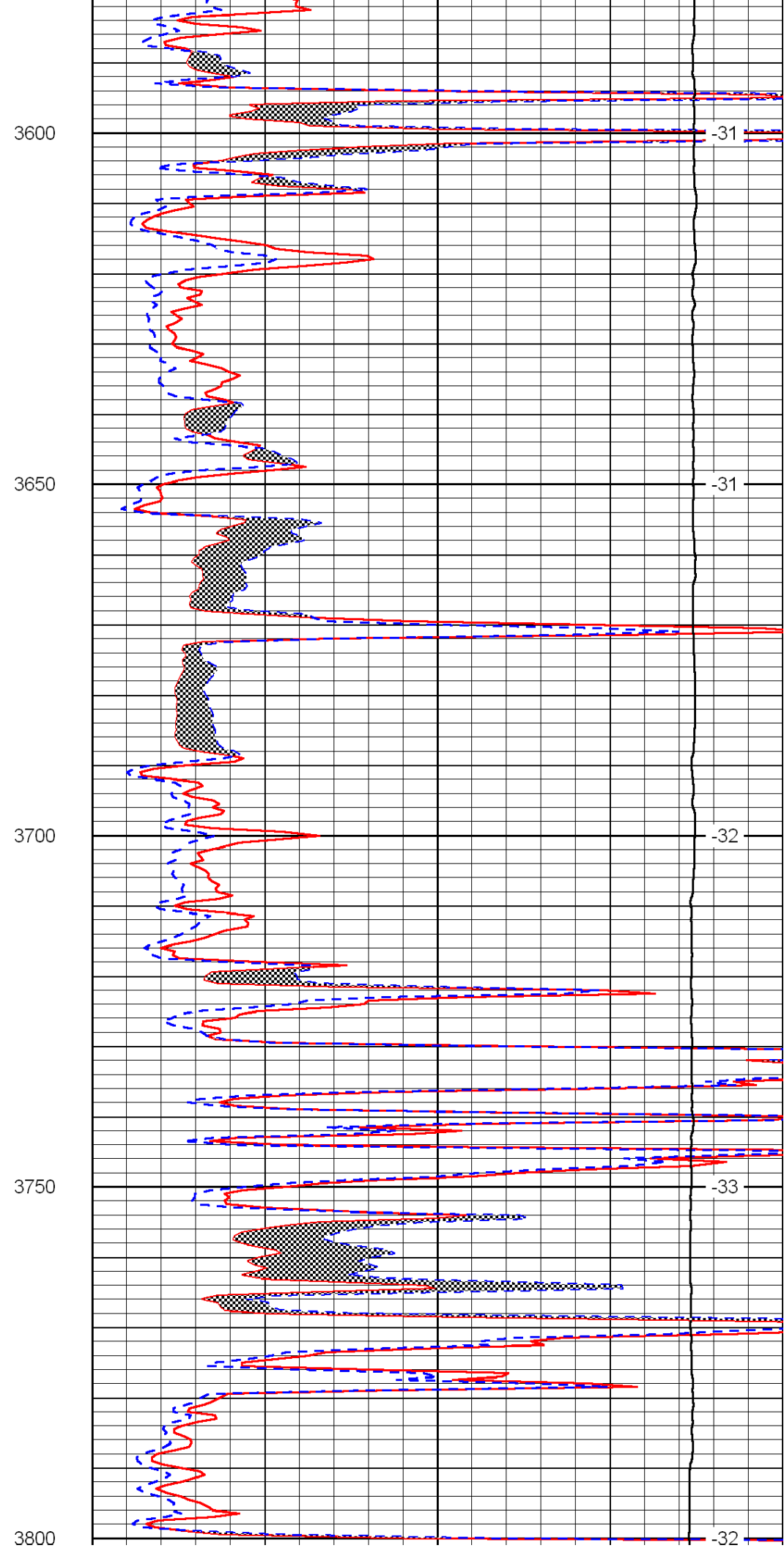
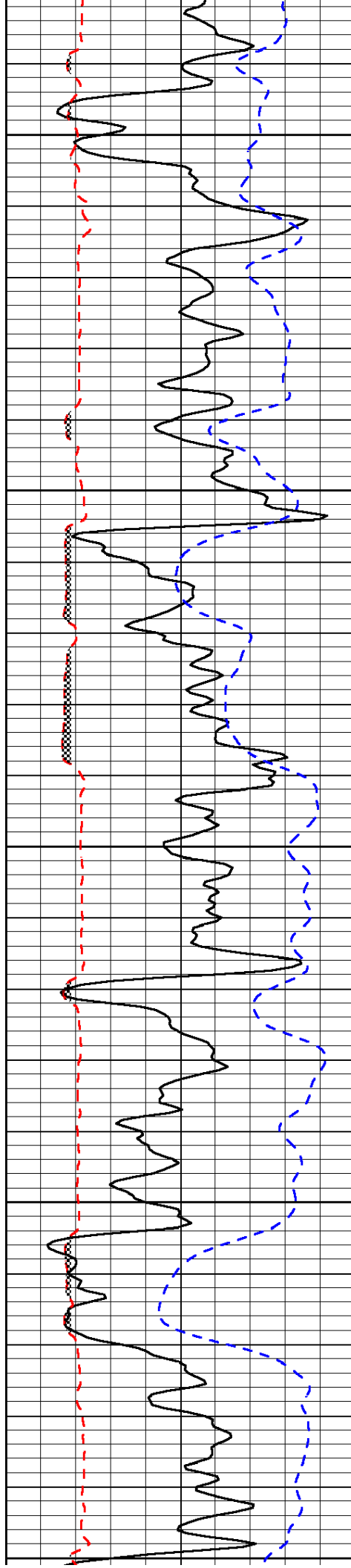


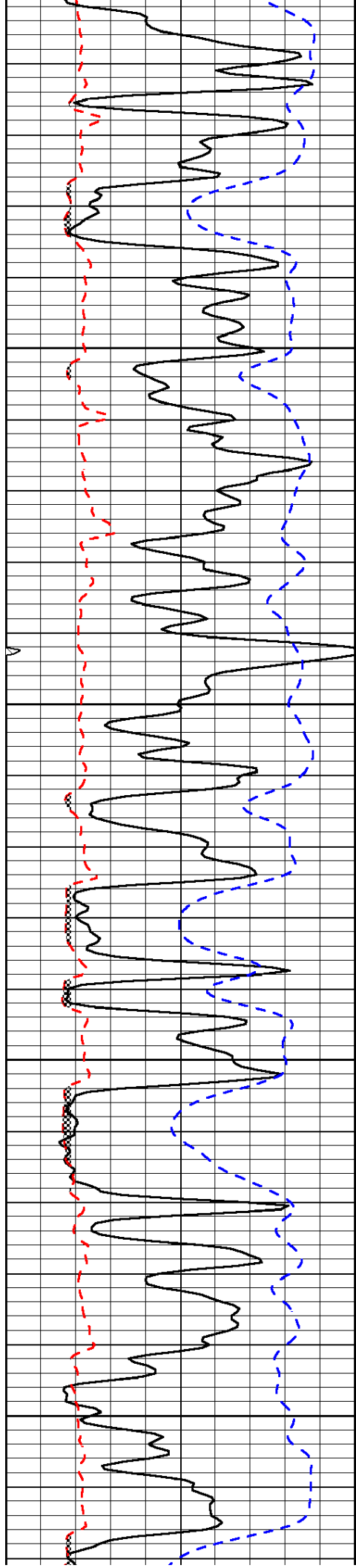
-32

-33

-32

-32



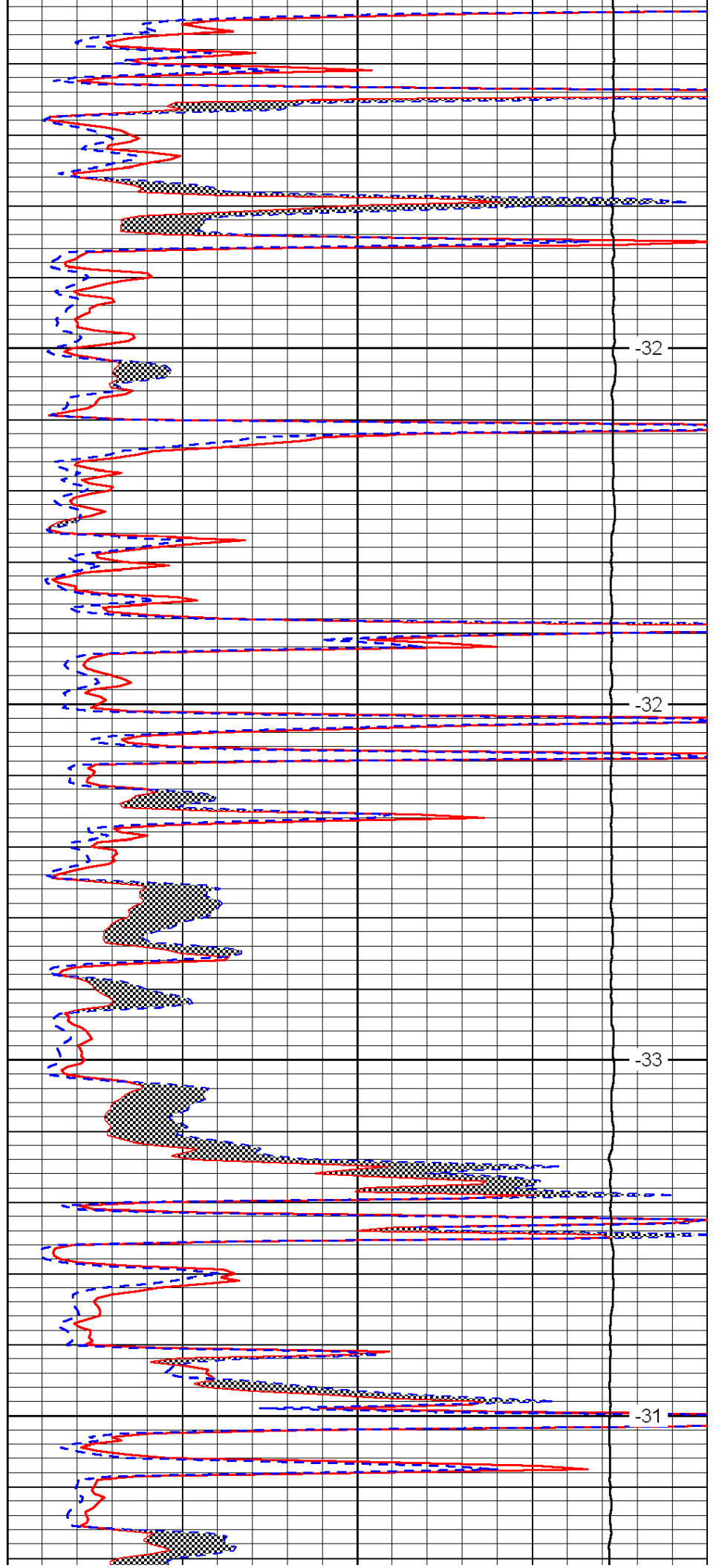


3850

3900

3950

4000

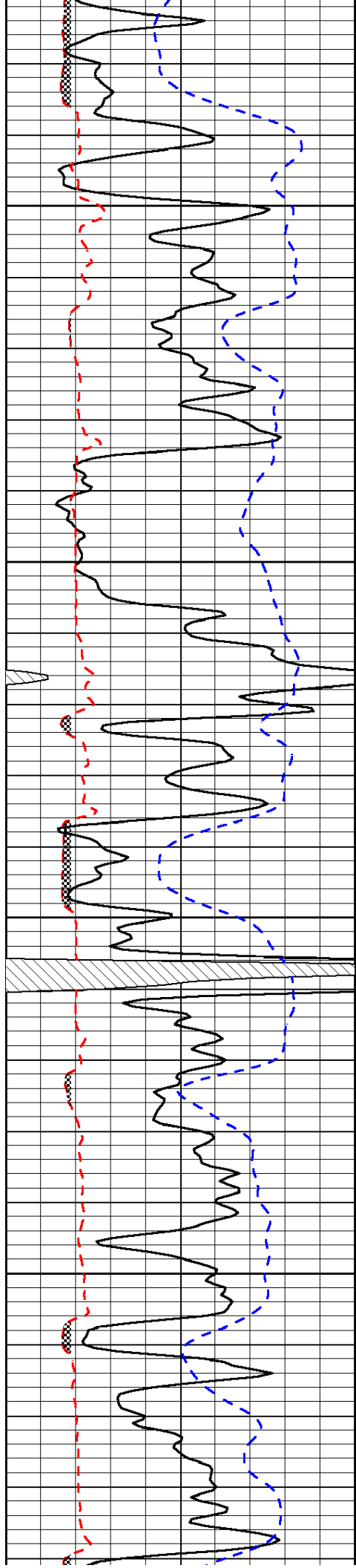


-32

-32

-33

-31

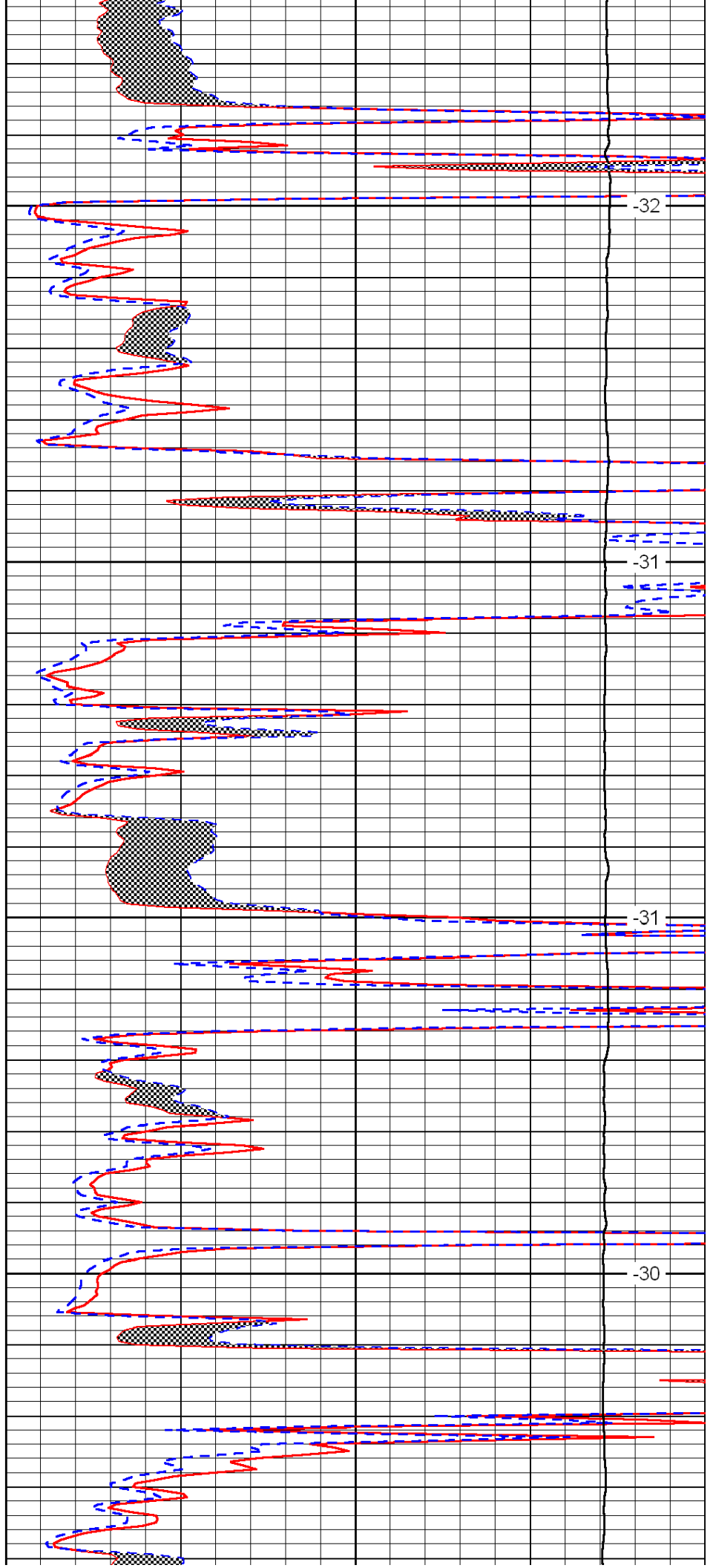


4050

4100

4150

4200

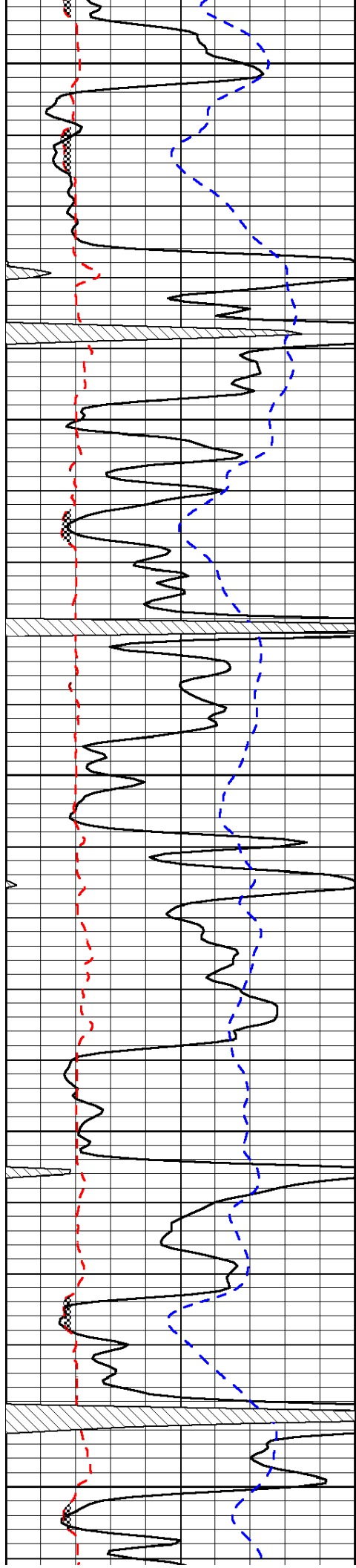


-32

-31

-31

-30



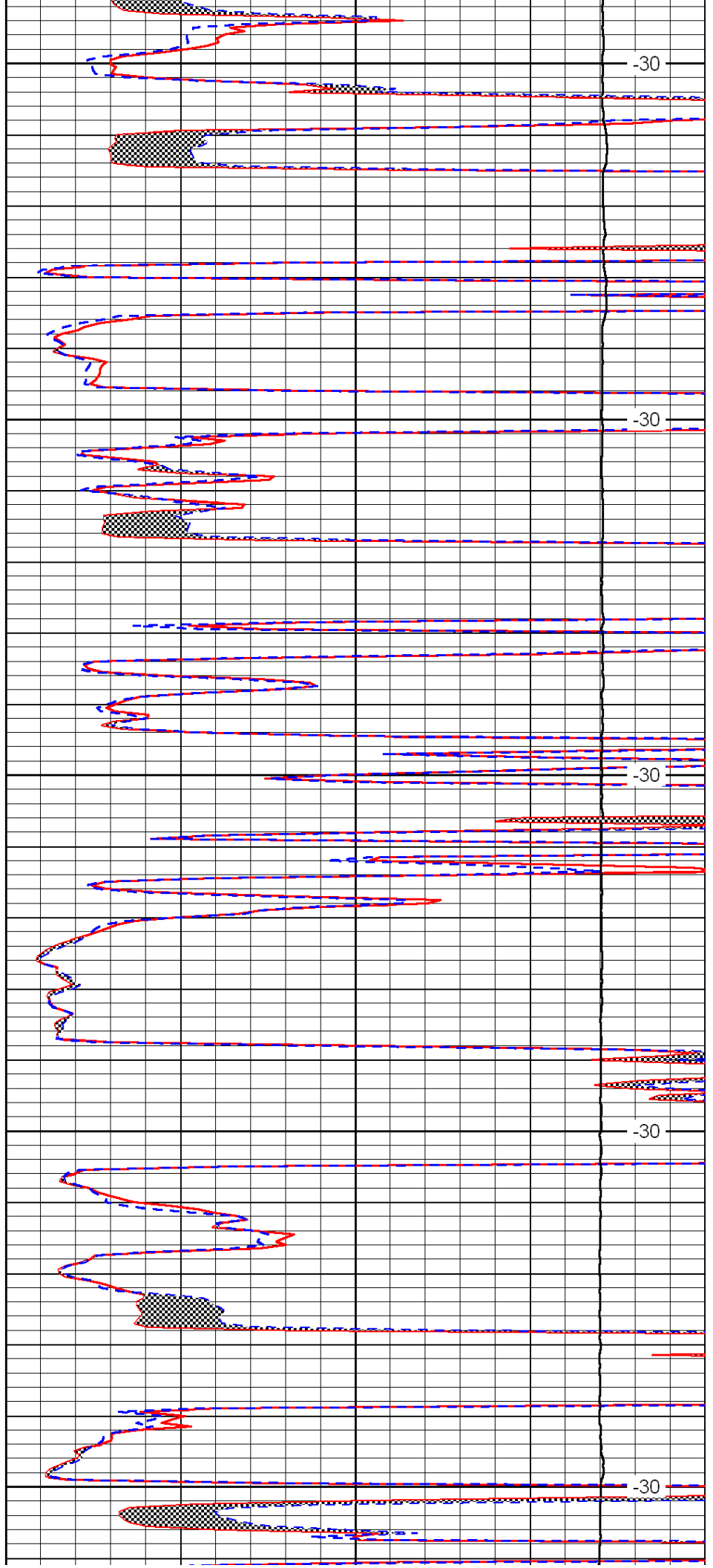
4250

4300

4350

4400

4450



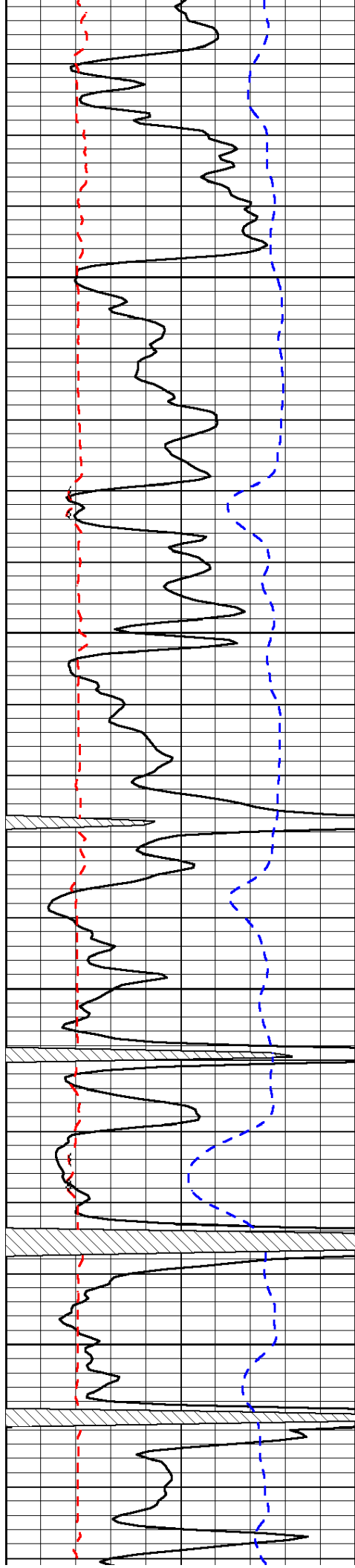
-30

-30

-30

-30

-30

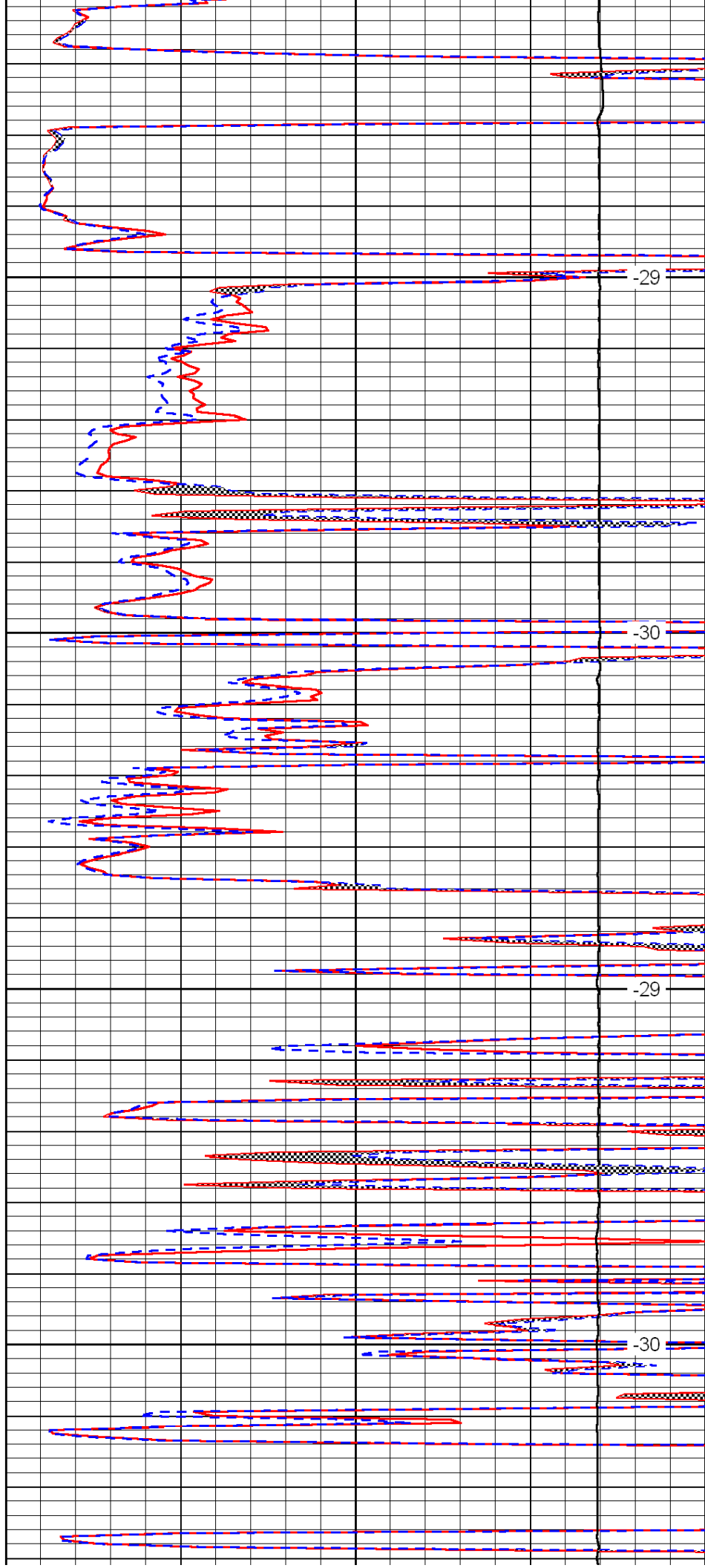


4500

4550

4600

4650

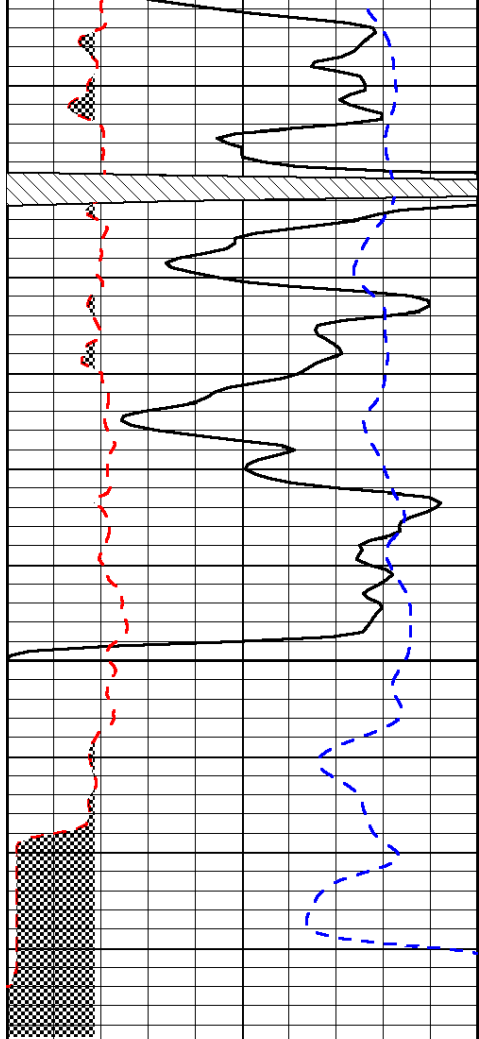


-29

-30

-29

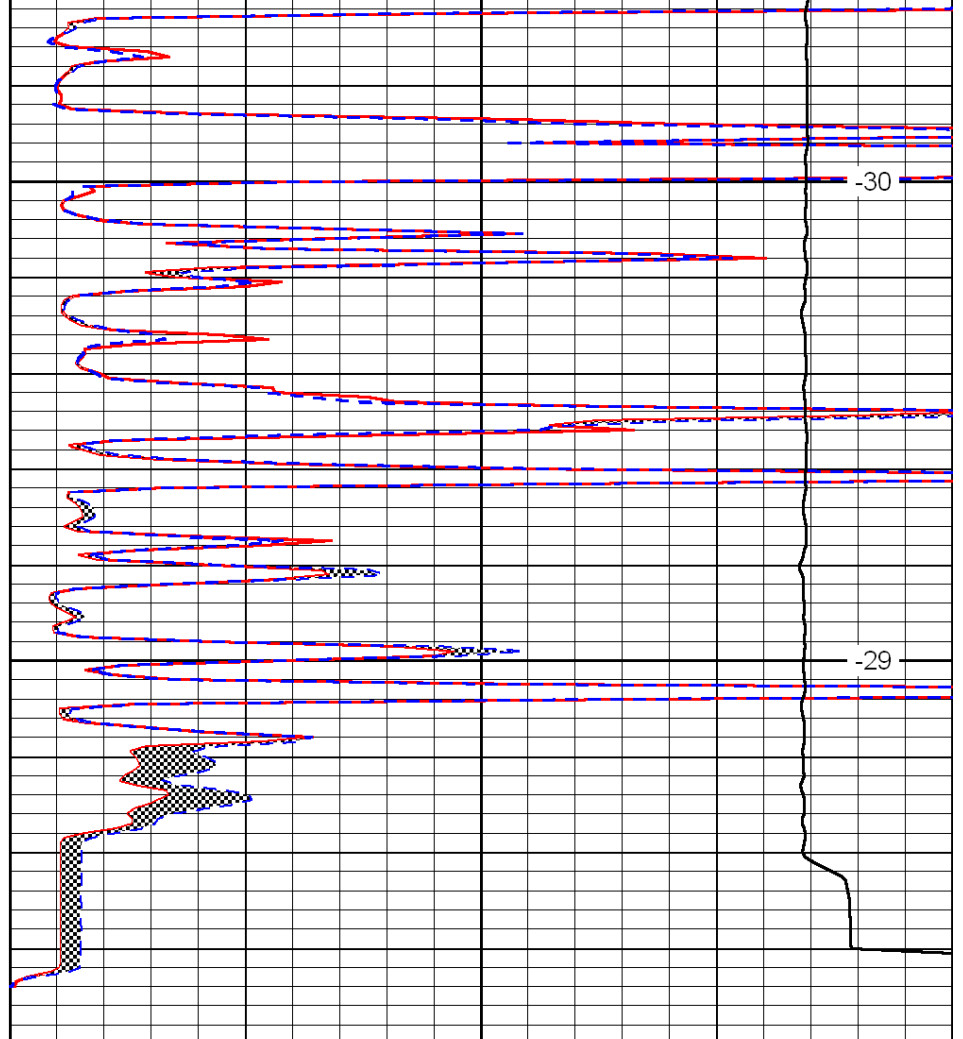
-30



0	Gamma Ray	150
6	Micro Log Caliper (GAPI)	16
-200	SP (mV)	0

4700

4750



0	Micro Inverse 1 X 1	40
0	Micro Normal 2''	40
15000	Line Weight	0

LSPD