



# Dual Induction Log

DIGITAL LOG (785) 625-3858

API No. 15-023-21,333-00-00

Company Credo Petroleum Corporation  
 Well Gly No. 1-25  
 Field Little Beaver Creek North  
 County Cheyenne State Kansas

Location 1980' FNL & 2055' FEL  
 Sec: 25 Twp: 4 S Rge: 37 W

Other Services  
 CNL/CDL  
 MEL

Permanent Datum Ground Level Elevation 3325  
 Log Measured From Kelly Bushing 5 Ft. Above Perm. Datum  
 Drilling Measured From Kelly Bushing

Elevation  
 K.B. 3330  
 D.F. 3325  
 G.L. 3325

Date	9/12/2011
Run Number	One
Depth Driller	4770
Depth Logger	4770
Bottom Logged Interval	4769
Top Log Interval	250
Casing Driller	8.625 @ 297
Casing Logger	302
Bit Size	7.875
Type Fluid in Hole	Chemical
Salinity,ppm CL	3500
Density / Viscosity	9.2   66
pH / Fluid Loss	10.5   7.2
Source of Sample	Flowline
Rm @ Meas. Temp	.71 @ 78
Rmf @ Meas. Temp	.53 @ 78
Rmc @ Meas. Temp	.95 @ 78
Source of Rmf / Rmc	Charts
Rm @ BHT	.44 @ 126
Operating Rig Time	4 1/2 Hours
Max Rec. Temp. F	126
Equipment Number	91
Location	Hays
Recorded By	D.Kerr
Witnessed By	Clayton Ericson

<<< Fold Here >>>

All interpretations are opinions based on inferences from electrical or other measurements and we cannot and do not guarantee the accuracy or correctness of any interpretation, and we shall not, except in the case of gross or willful negligence on our part, be liable or responsible for any loss, costs, damages, or expenses incurred or sustained by anyone resulting from any interpretation made by any of our officers, agents or employees. These interpretations are also subject to our general terms and conditions set out in our current Price Schedule.

### Comments

Thank you for using Log-Tech, Inc.  
 (785) 625-3858

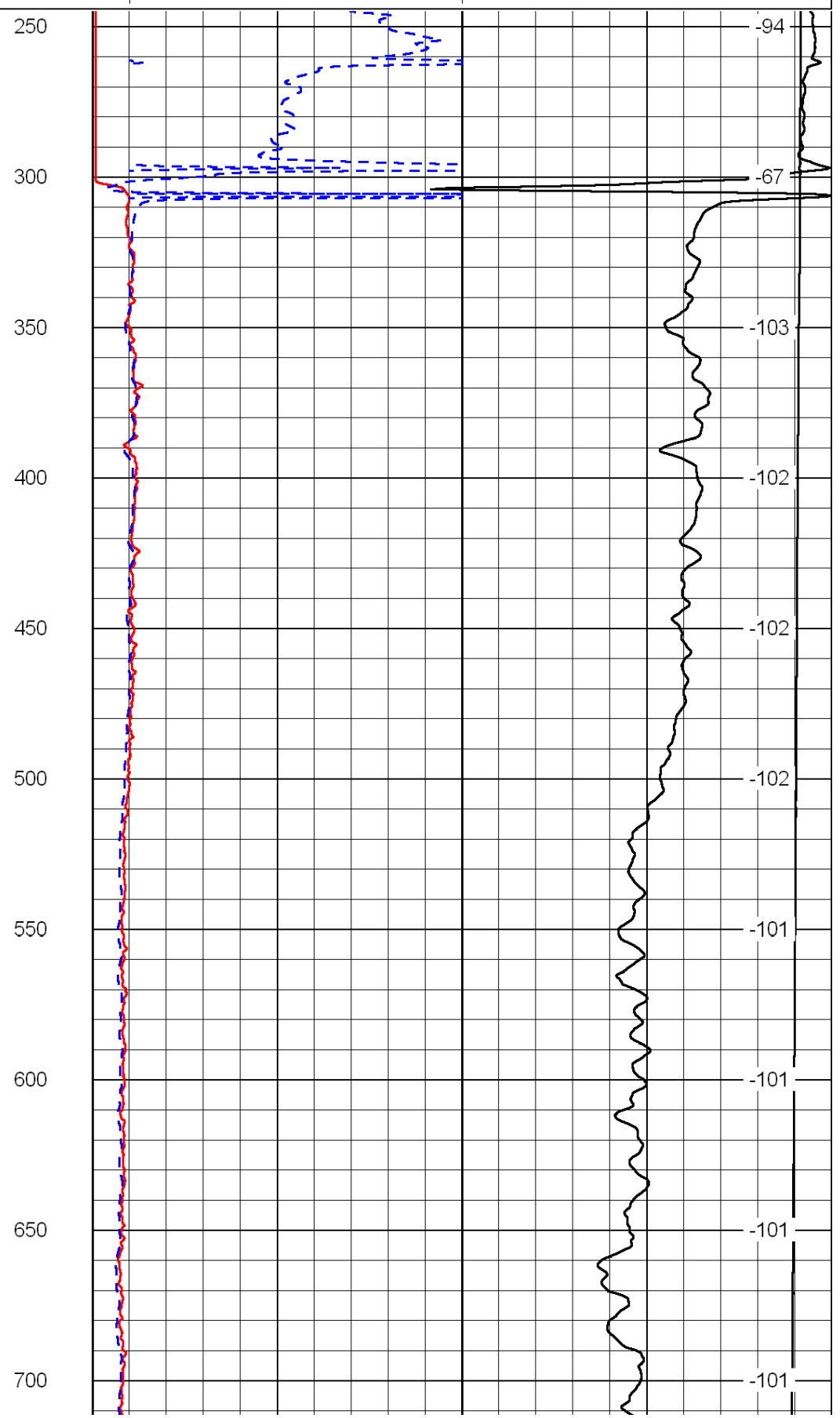
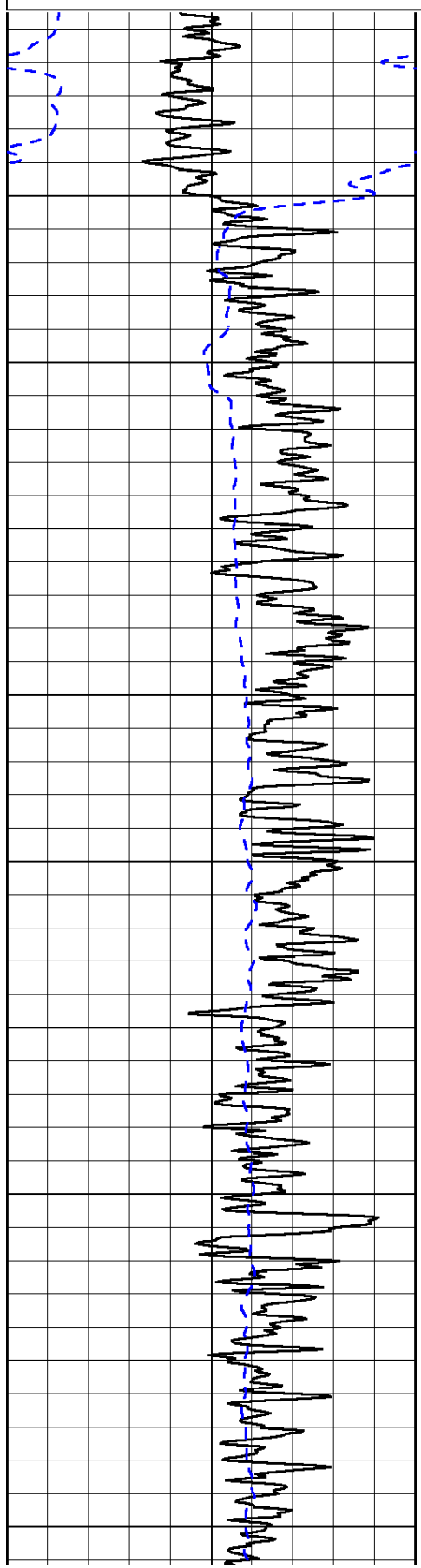
McDonald KS, 7 1/2 South to H RD,  
 2 West, 1/2 North, West Into

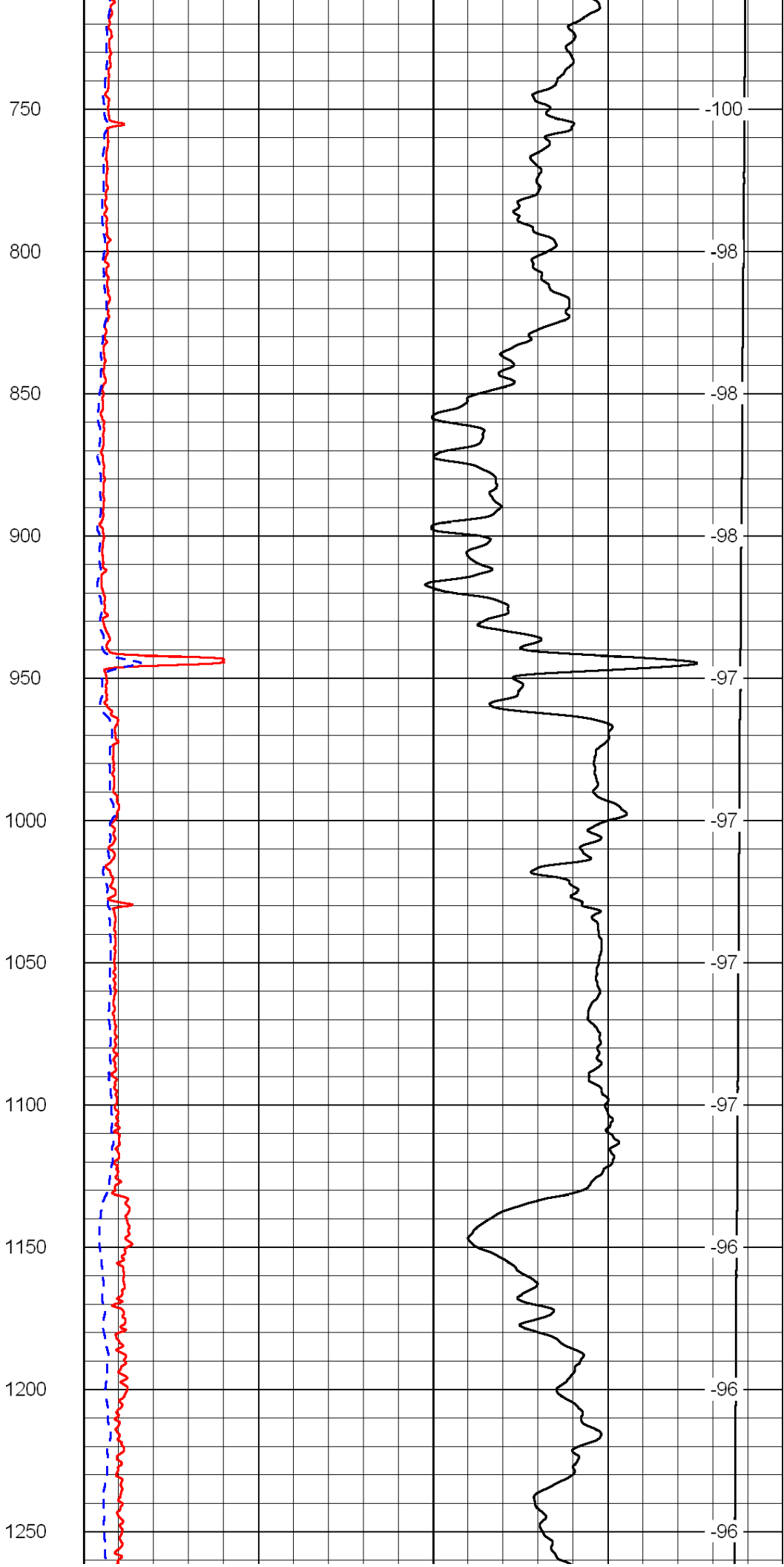
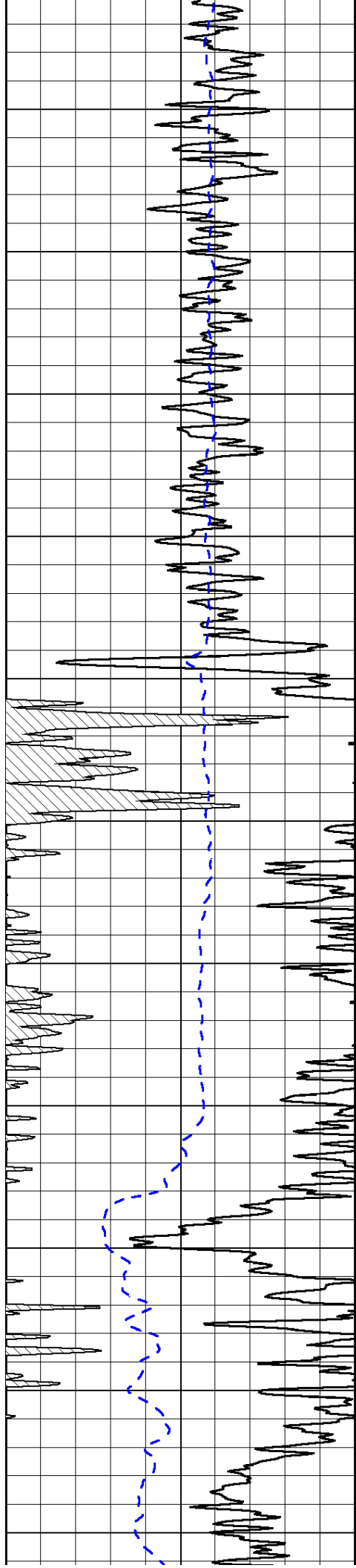
Database File: c:\warrior\data\credo\_gly no. 1-25\credo\_091211hd.db  
 Dataset Pathname: DIL\credstk  
 Presentation Format: dil2in  
 Dataset Creation: Mon Sep 12 13:29:36 2011  
 Charted by: Depth in Feet scaled 1:600

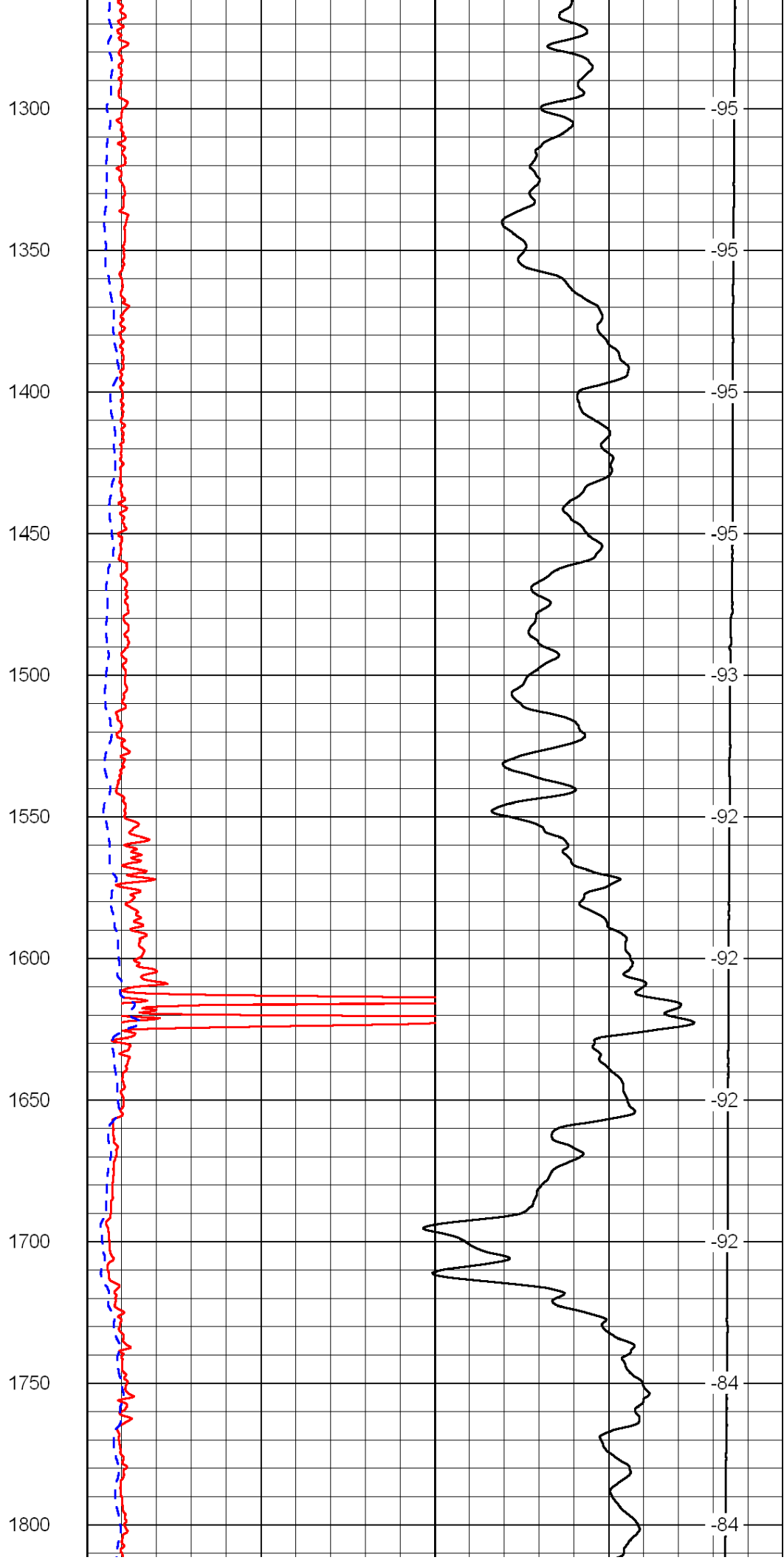
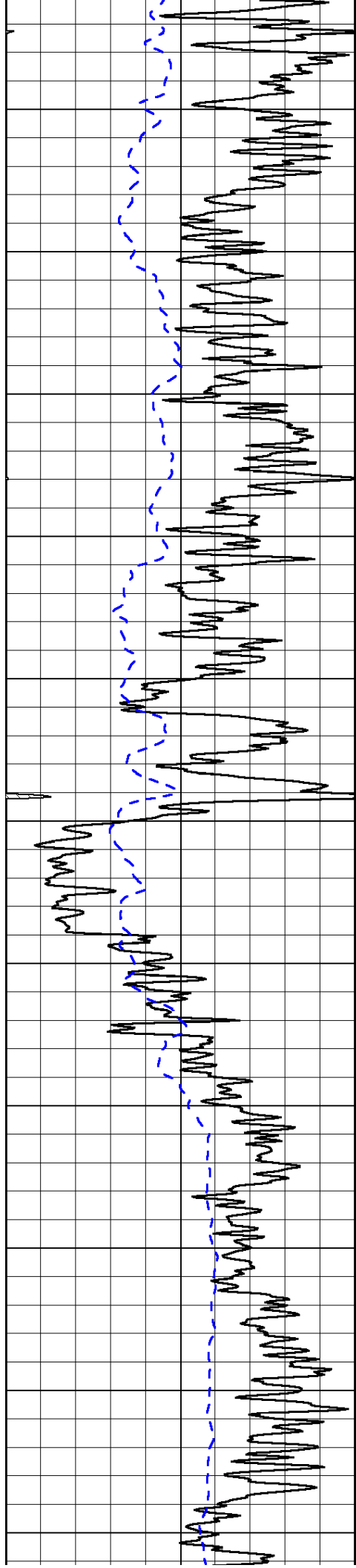
0	Gamma Ray	150
-200	SP (mV)	0

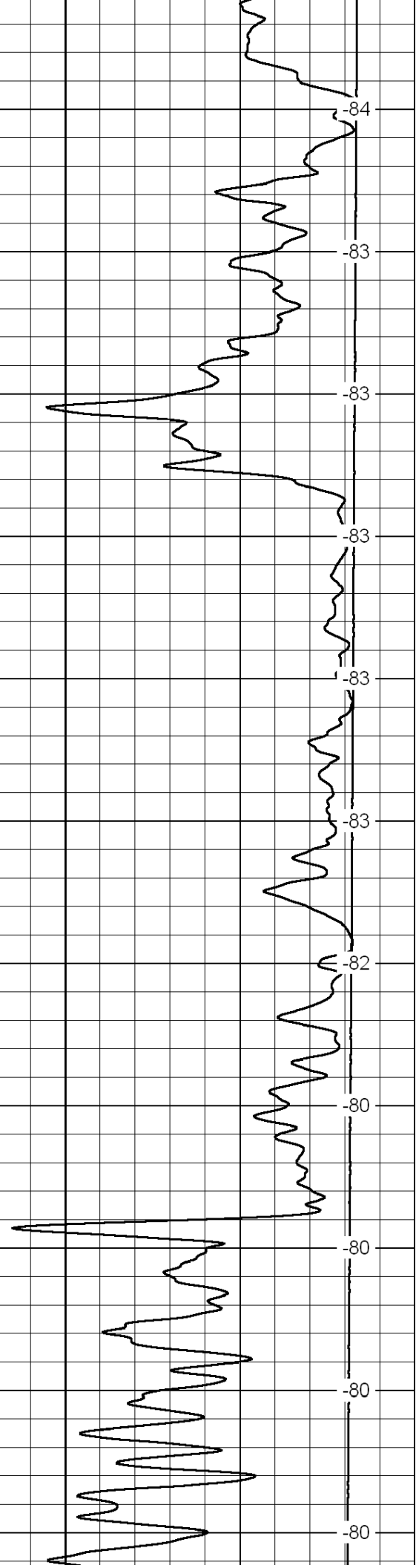
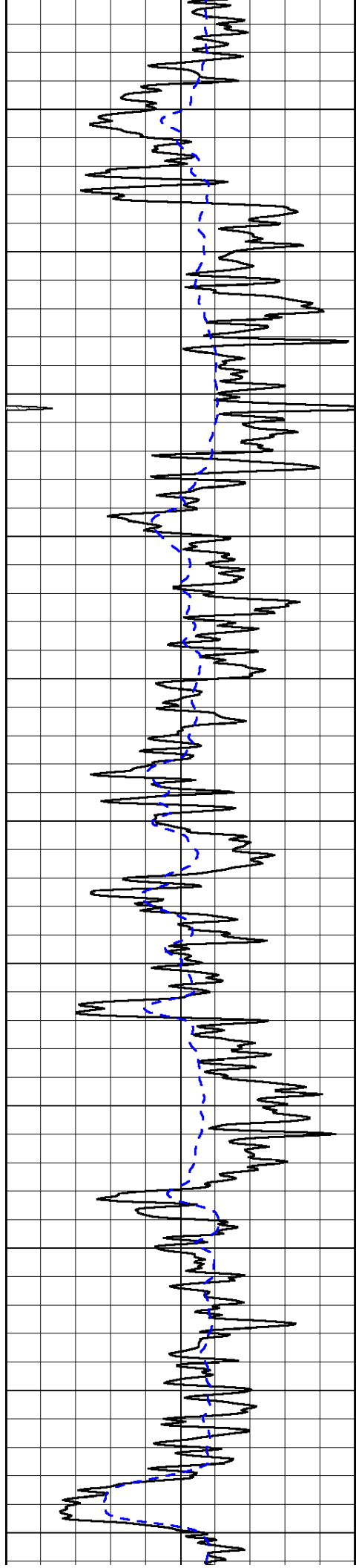
0	Shallow Resistivity	50
0	Deep Resistivity	50
1000	Conductivity	0
15000	Line Tension	0
50	Shallow Resistivity	500
50	Deep Resistivity	500

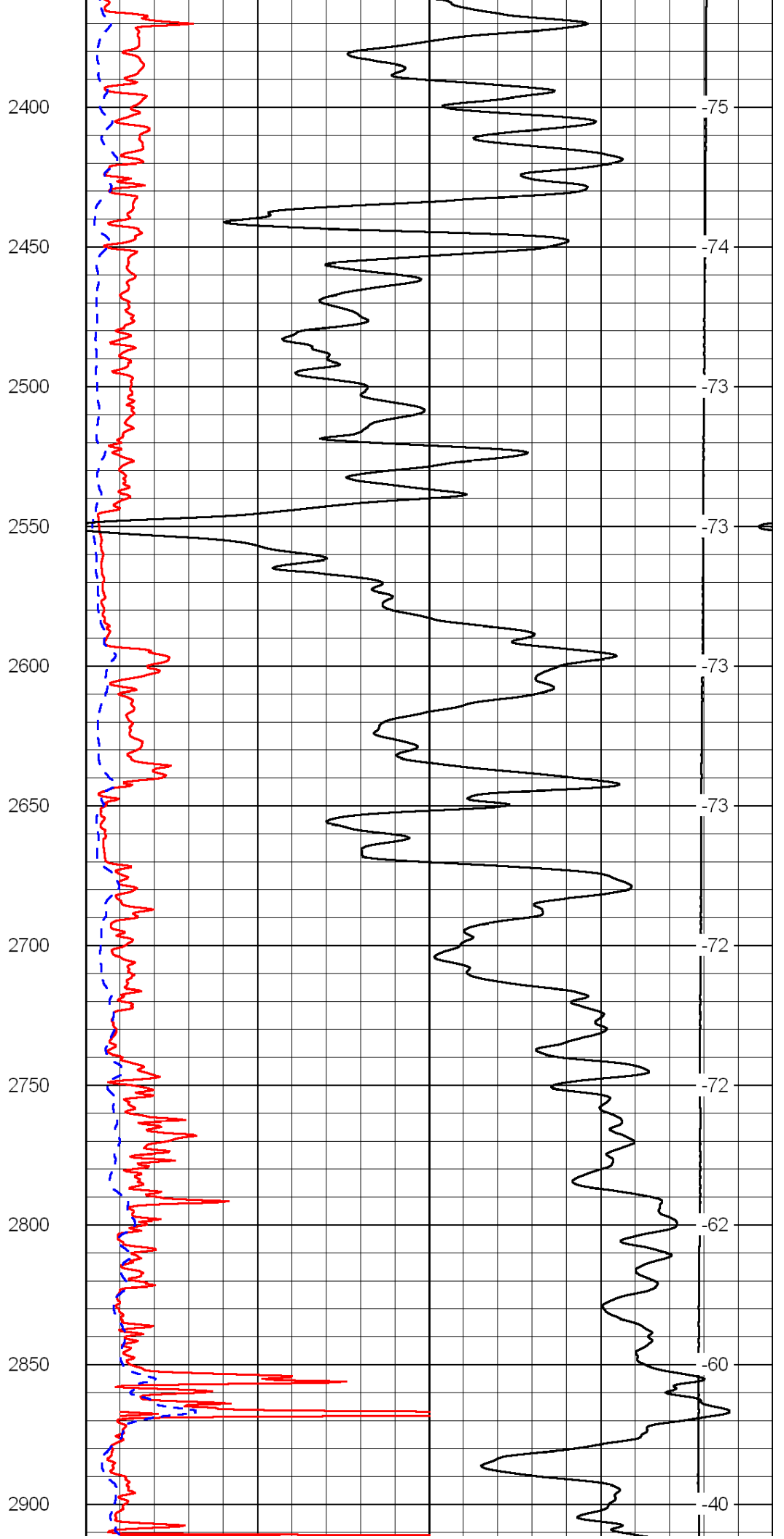
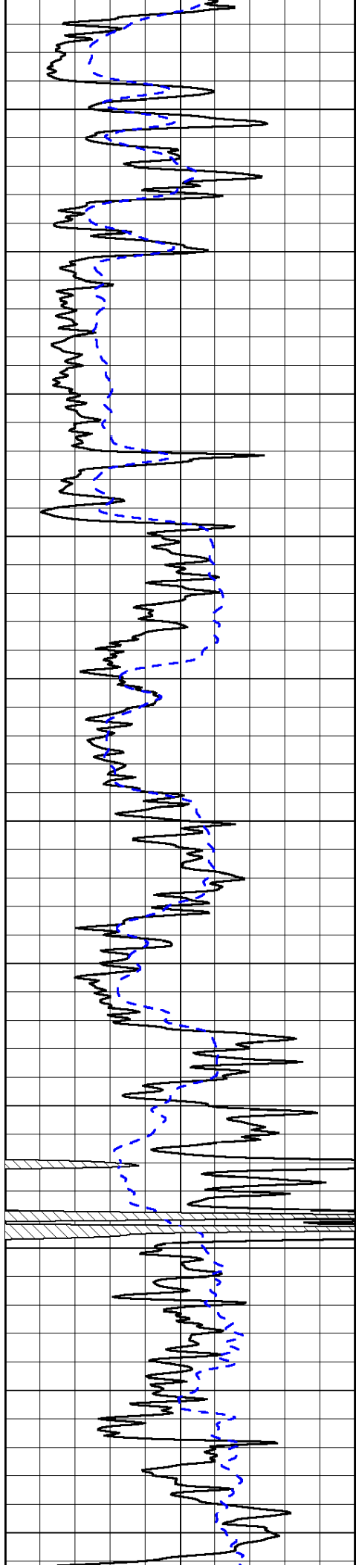
LSPD

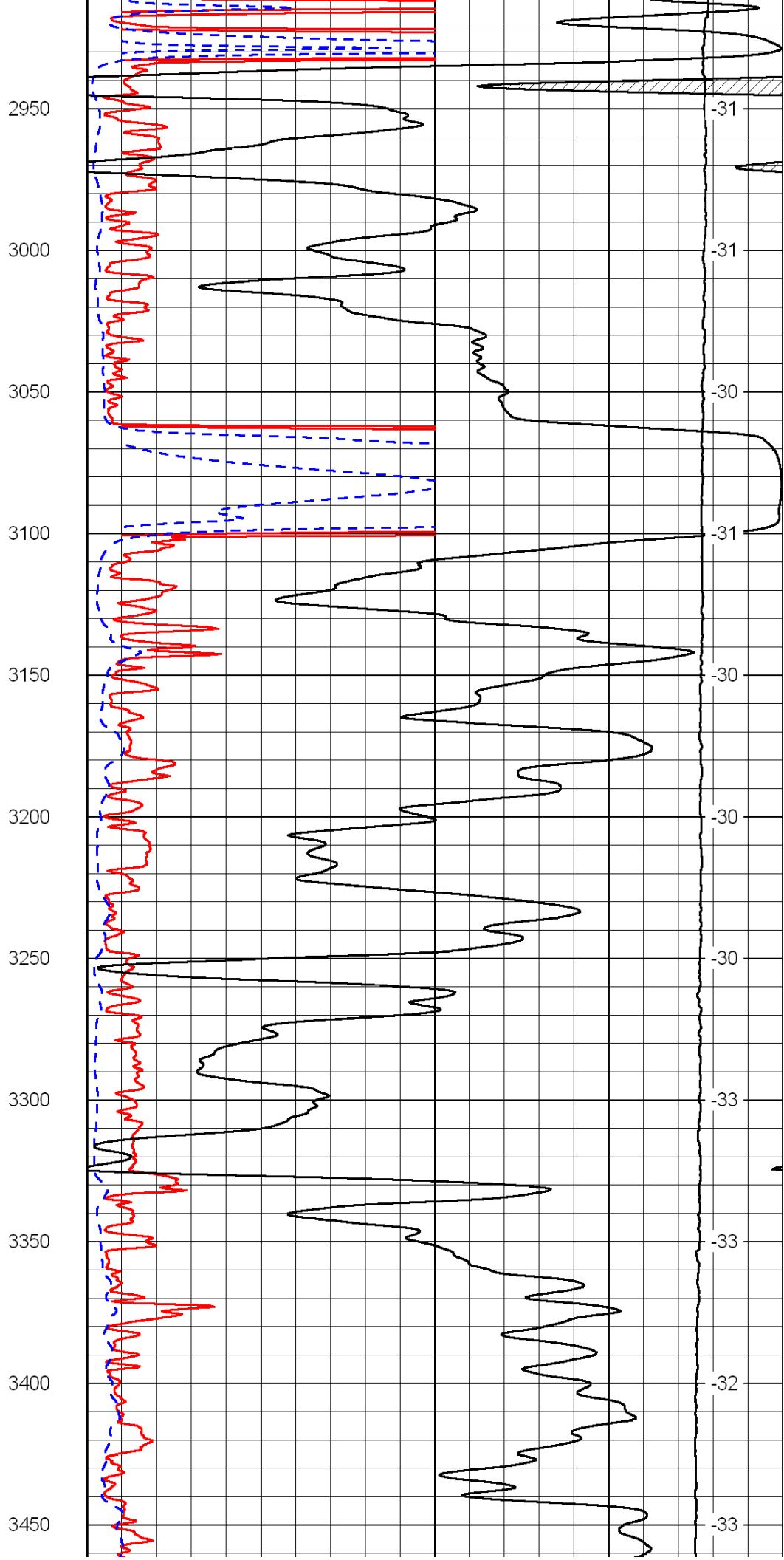
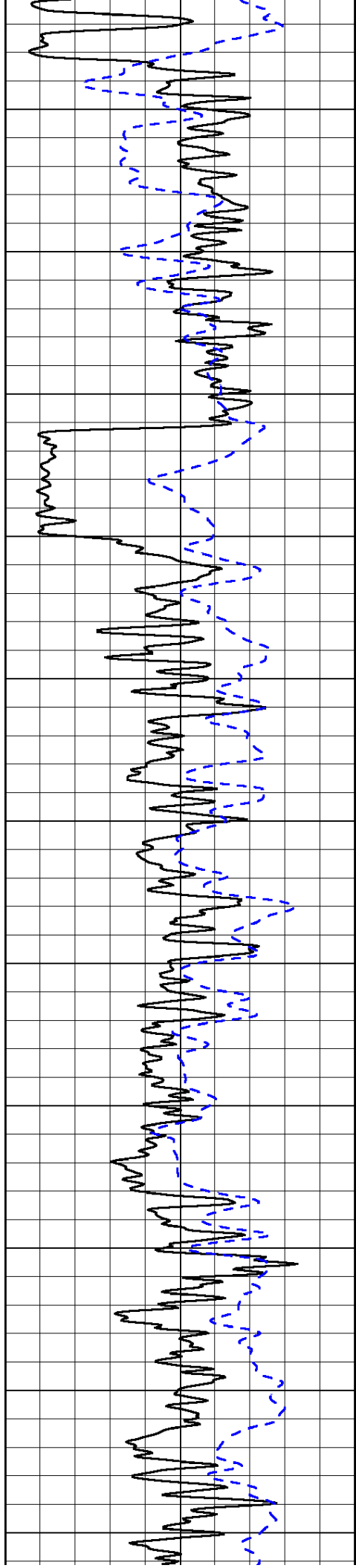


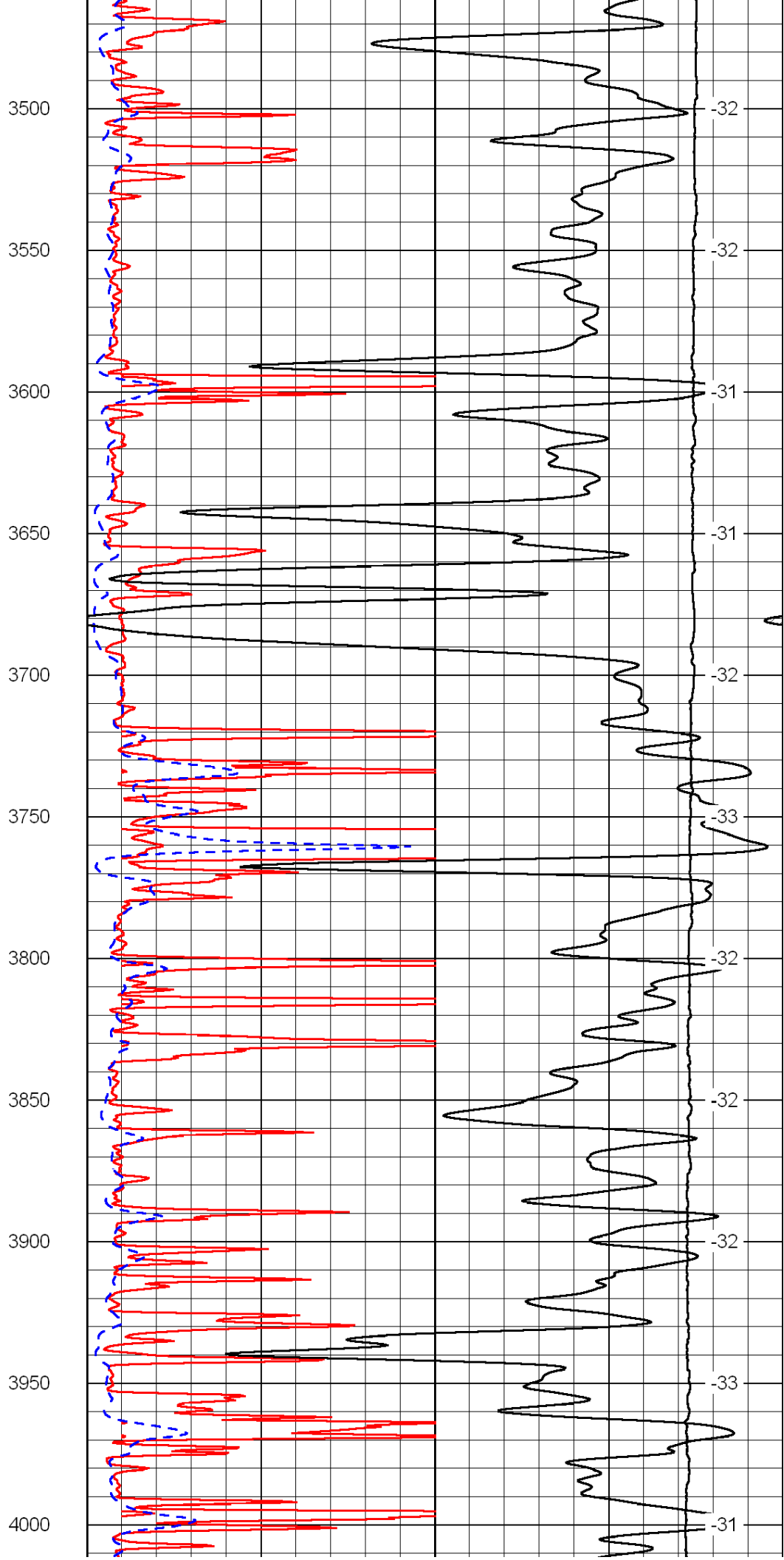
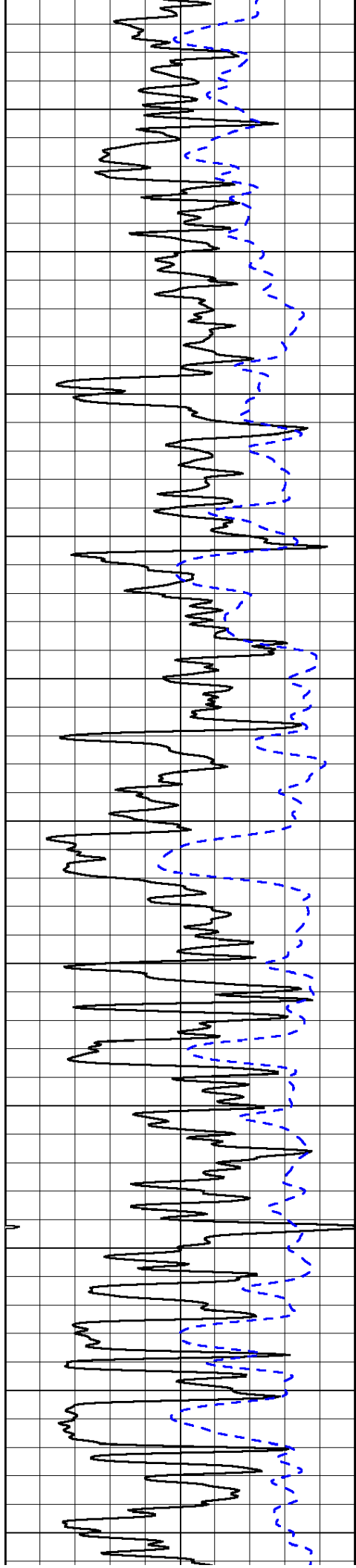


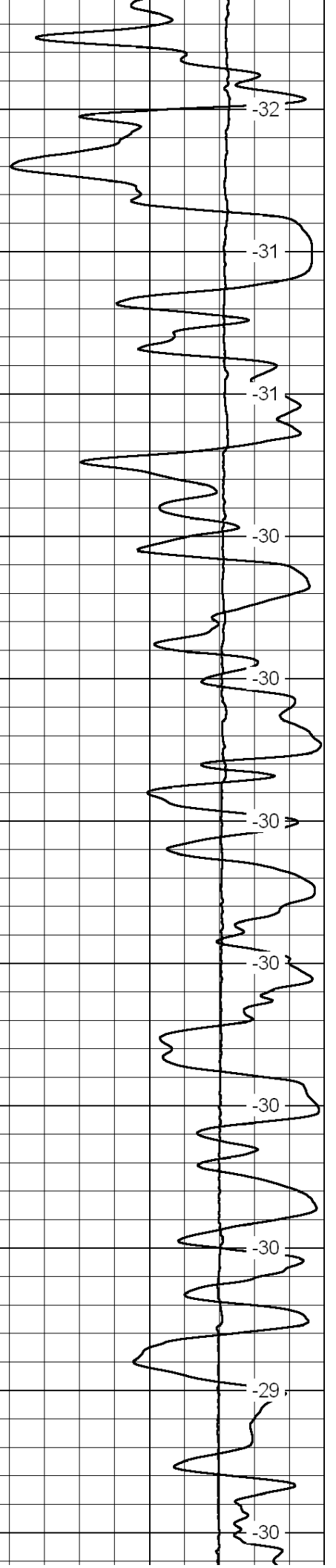
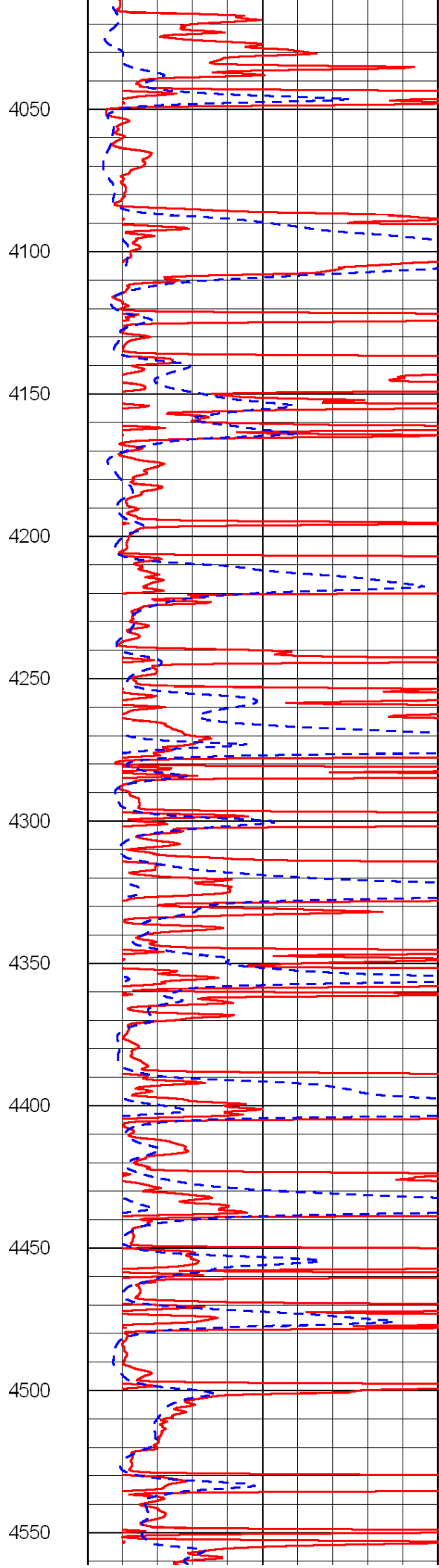
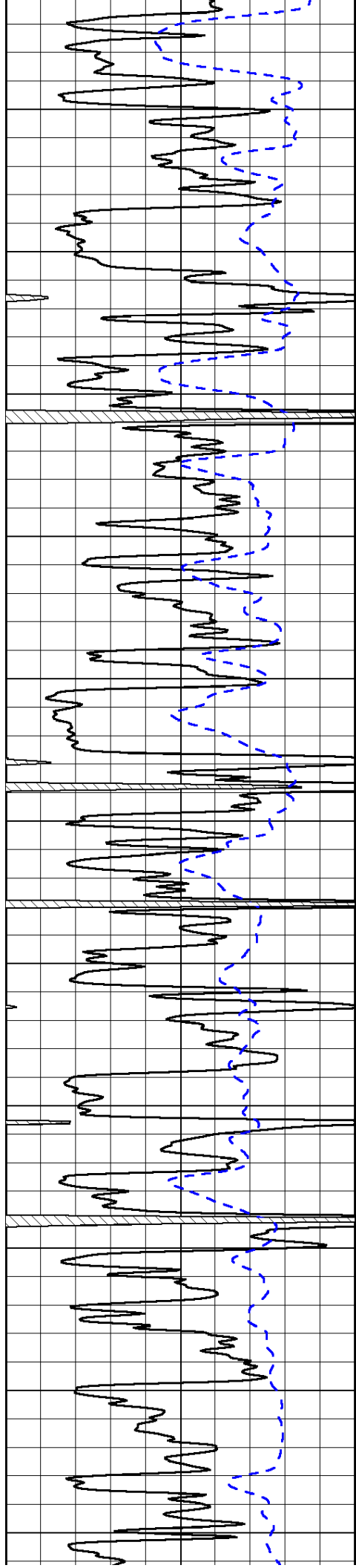


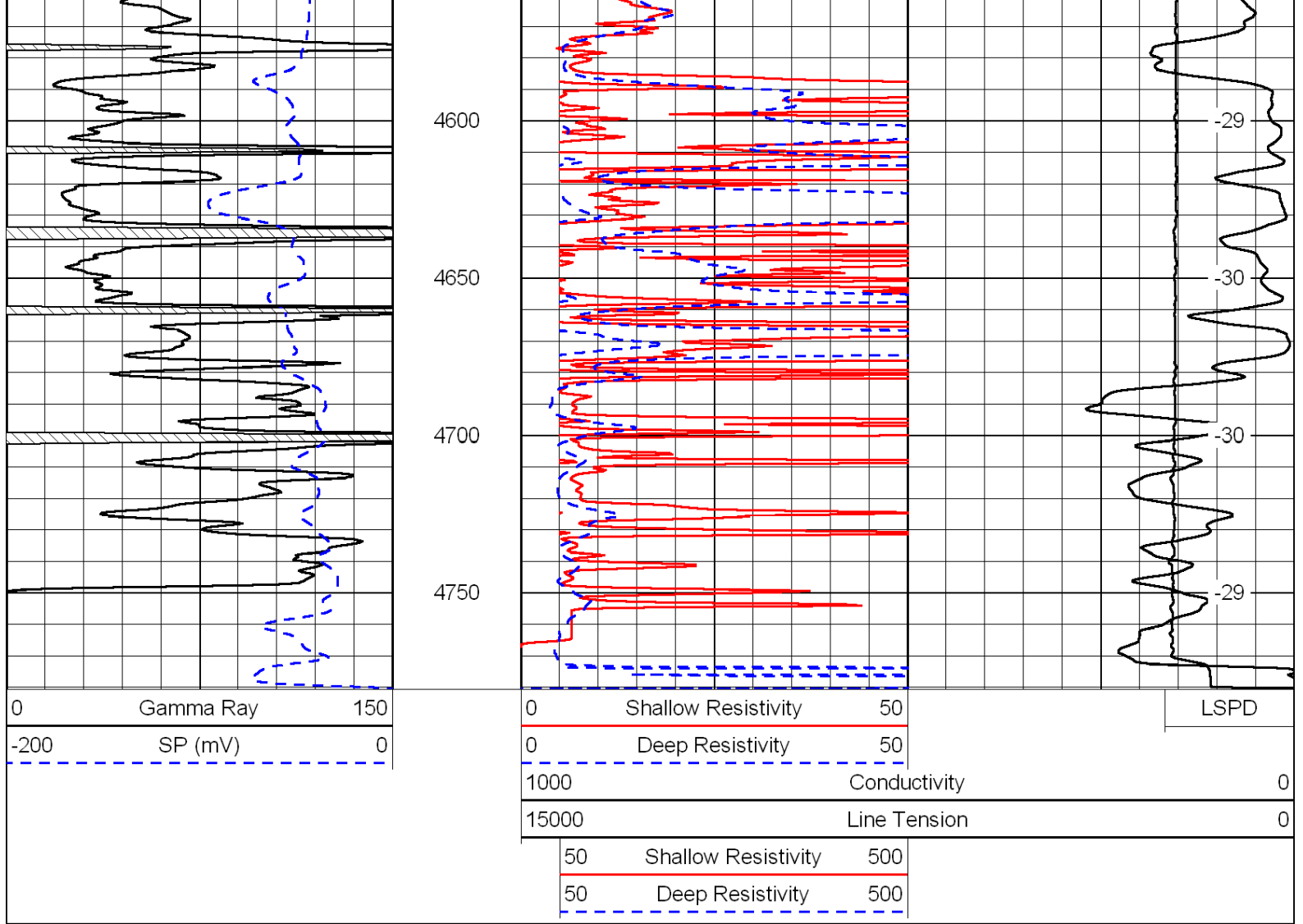




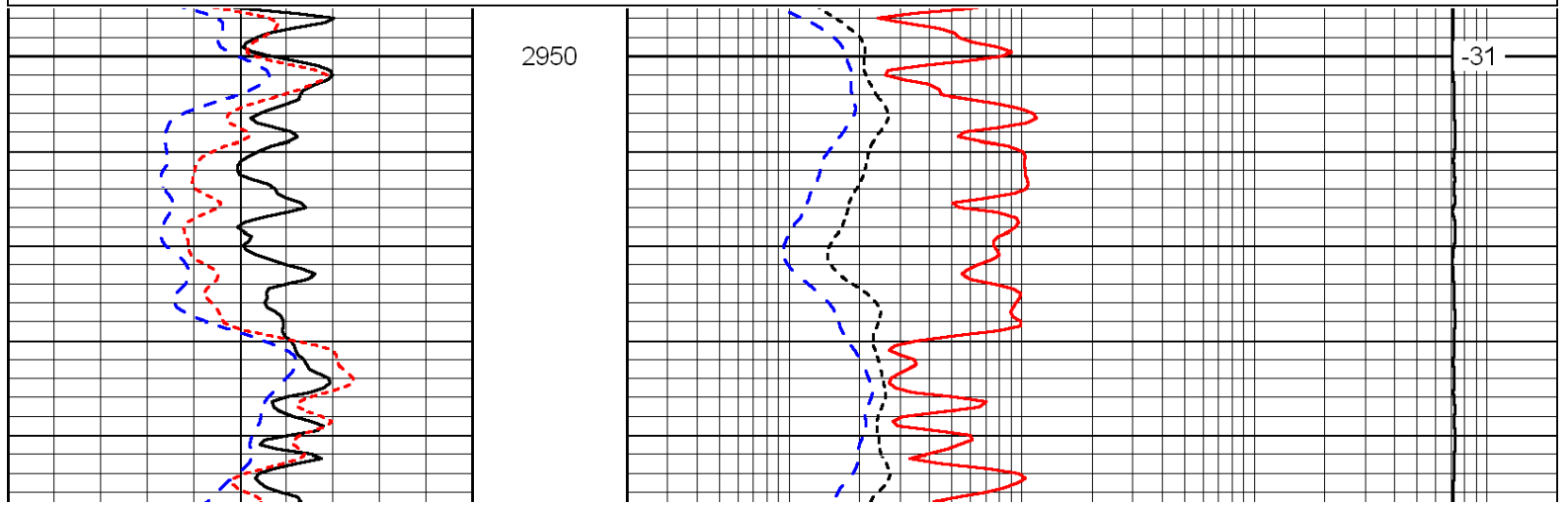
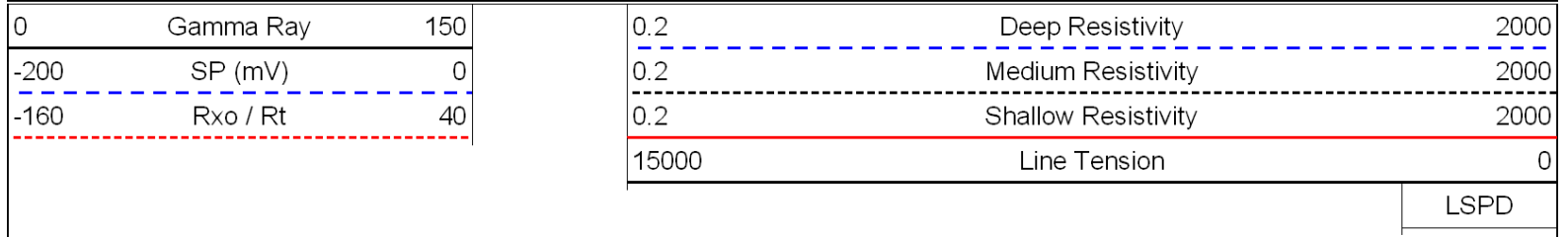


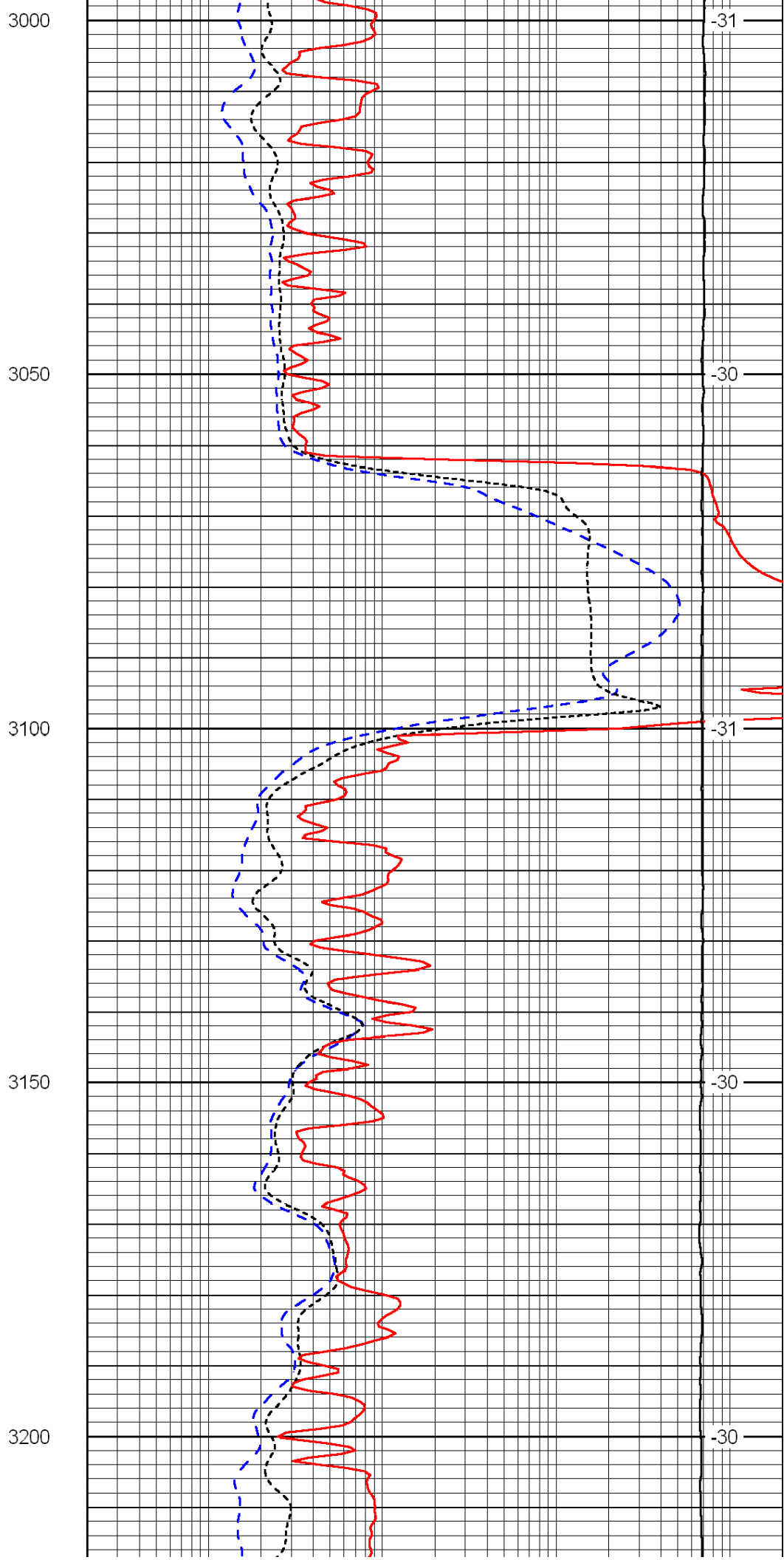
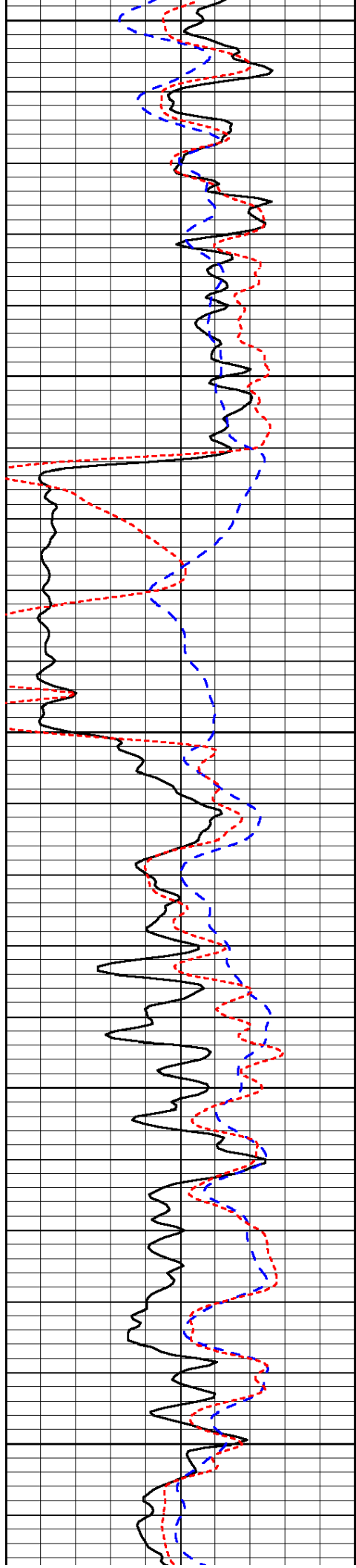


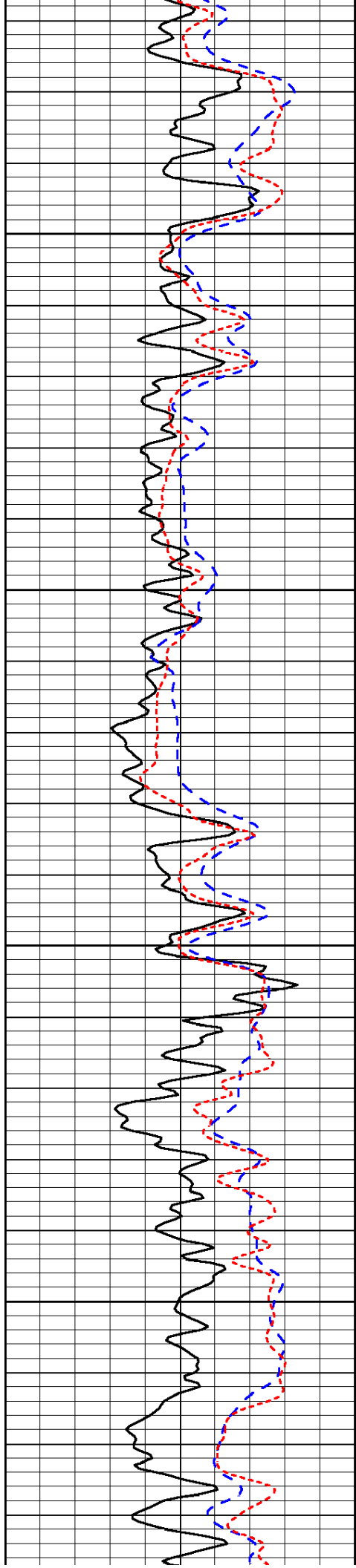




Database File: c:\warrior\data\credo\_gly no. 1-25\credo\_091211hd.db  
 Dataset Pathname: DIL/credstk  
 Presentation Format: dil  
 Dataset Creation: Mon Sep 12 13:29:36 2011  
 Charted by: Depth in Feet scaled 1:240





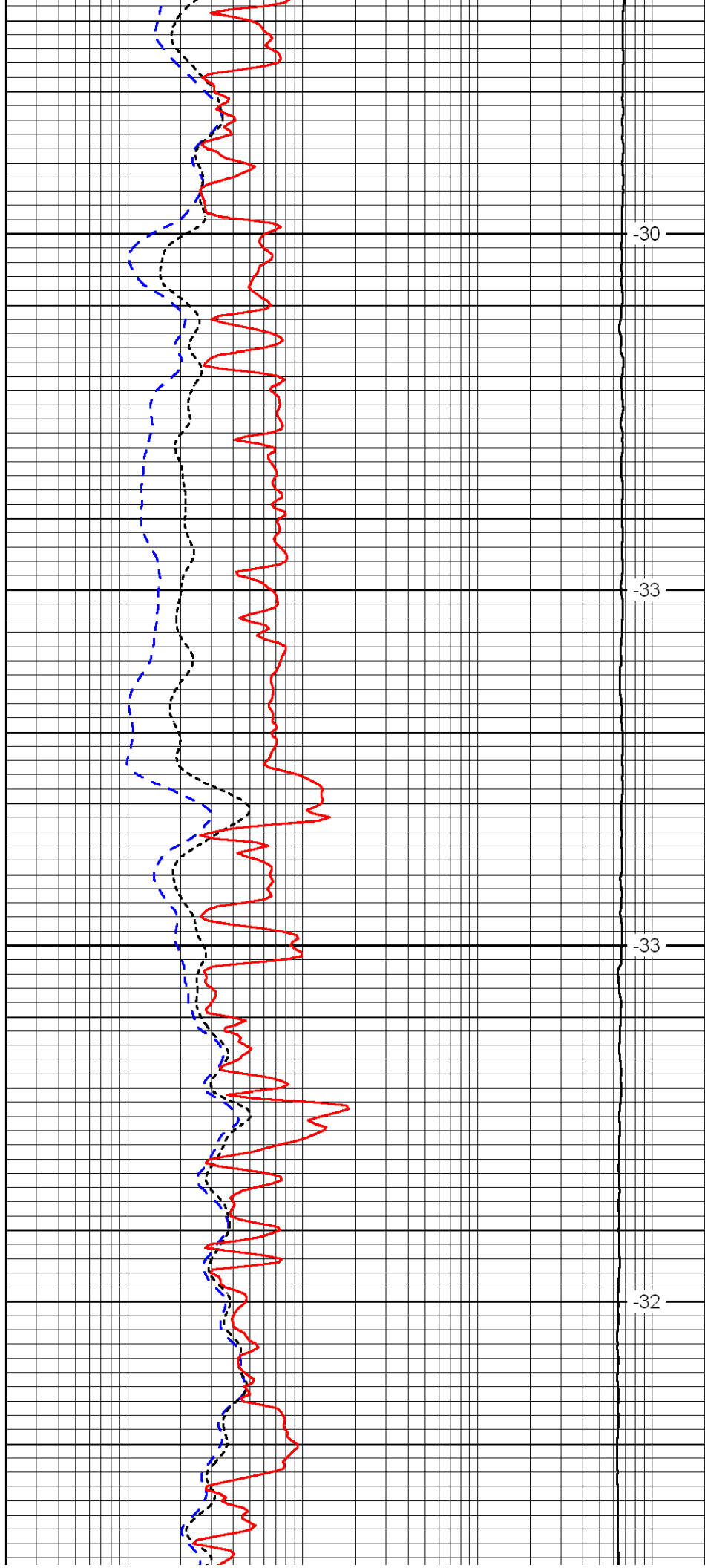


3250

3300

3350

3400

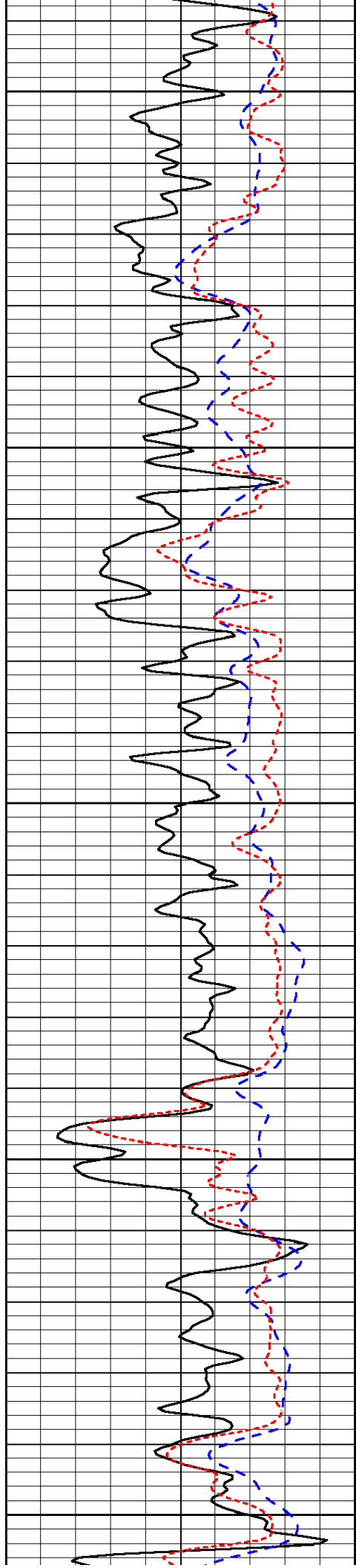


-30

-33

-33

-32



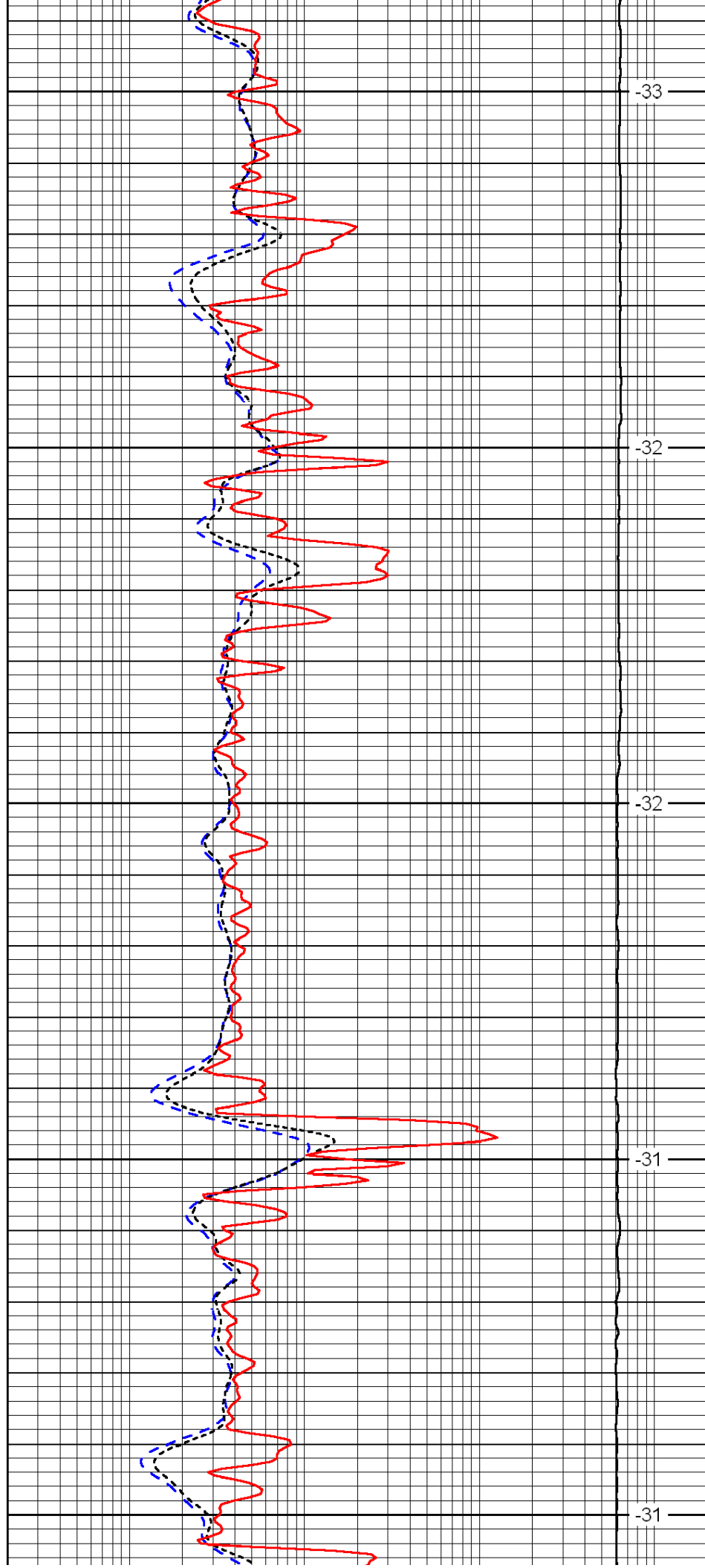
3450

3500

3550

3600

3650



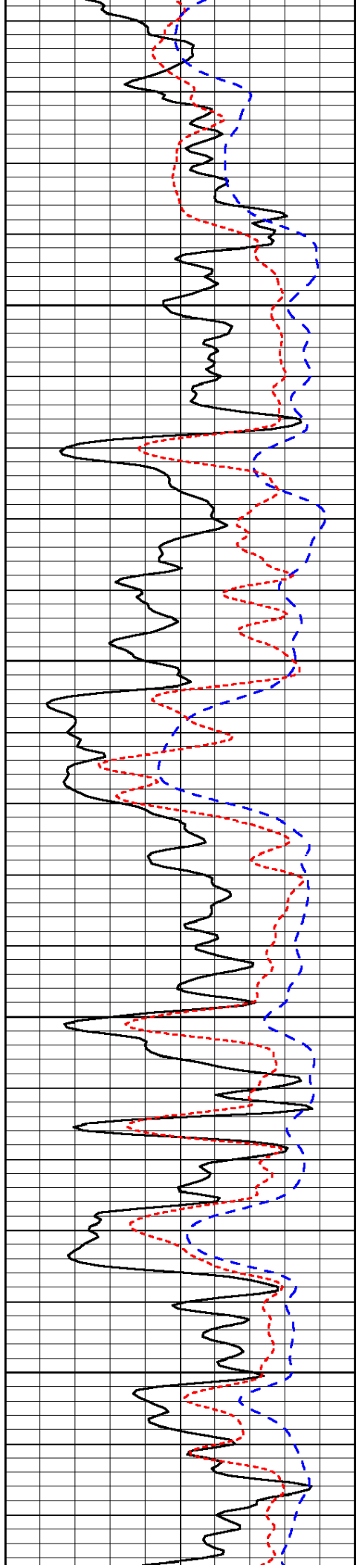
-33

-32

-32

-31

-31

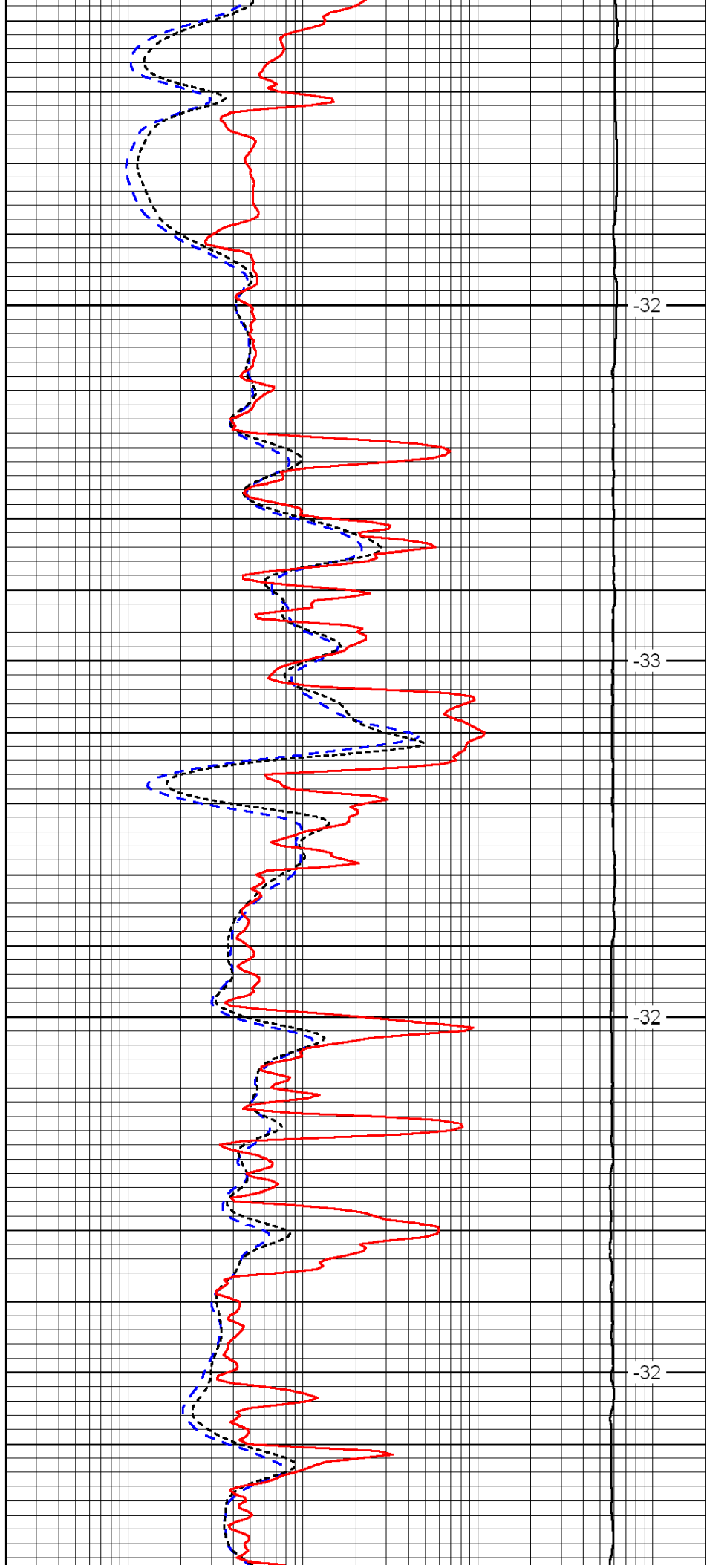


3700

3750

3800

3850

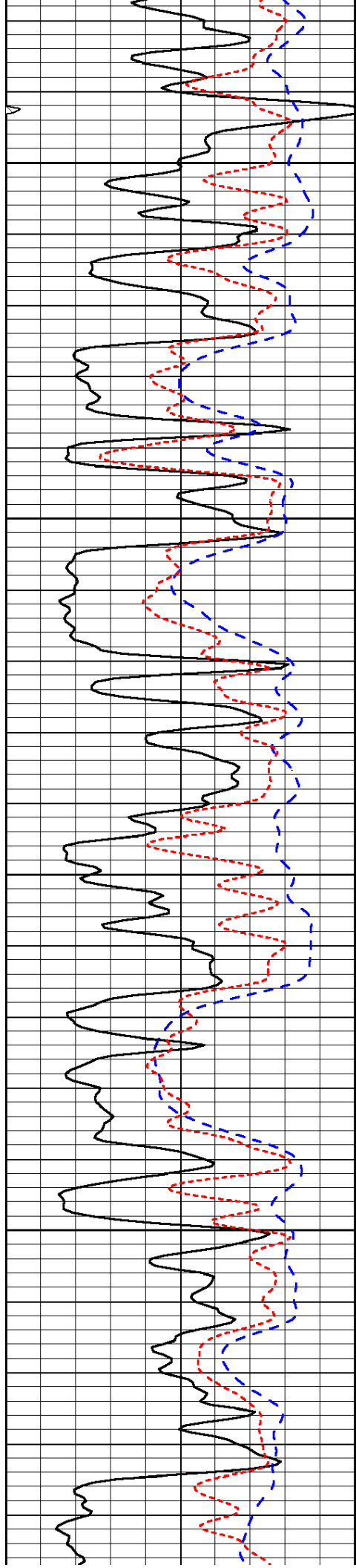


-32

-33

-32

-32

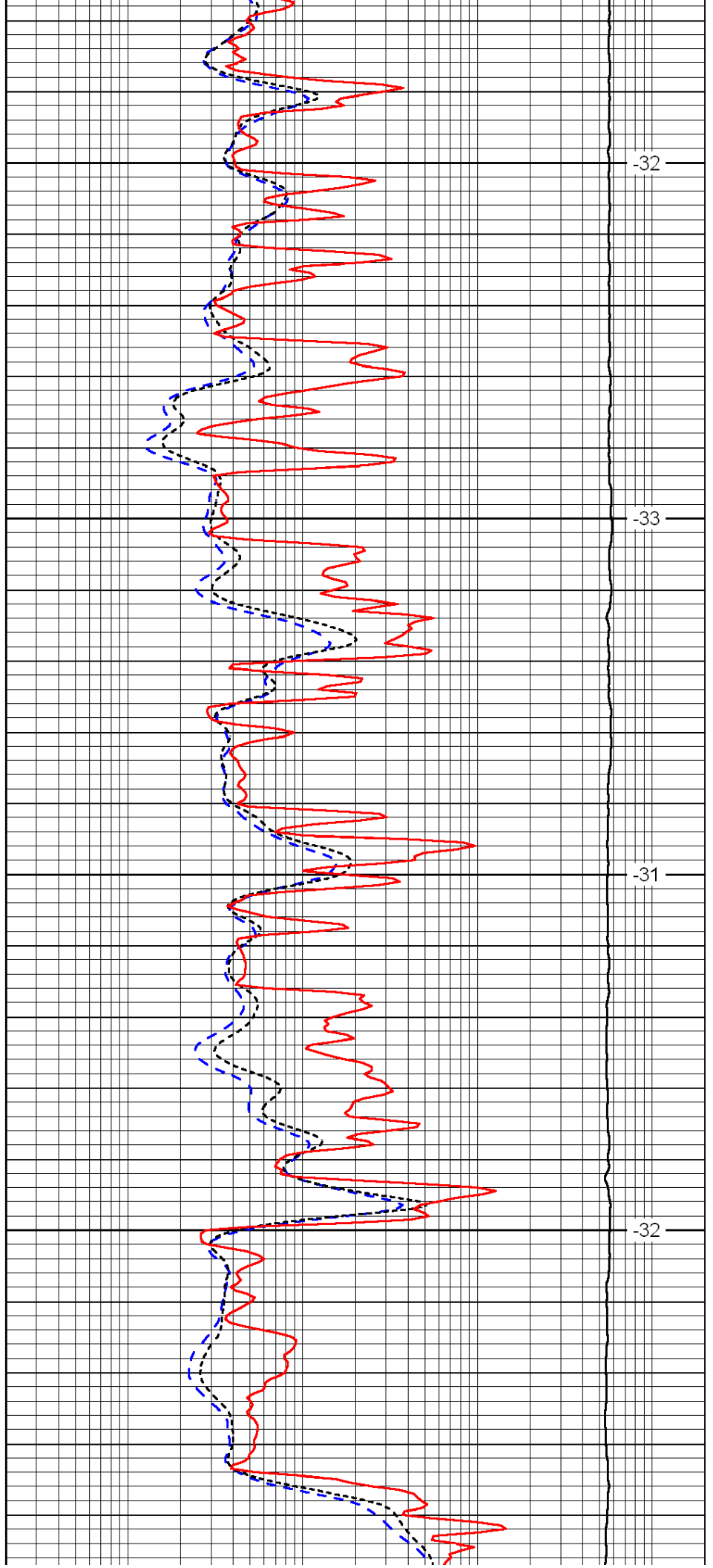


3900

3950

4000

4050

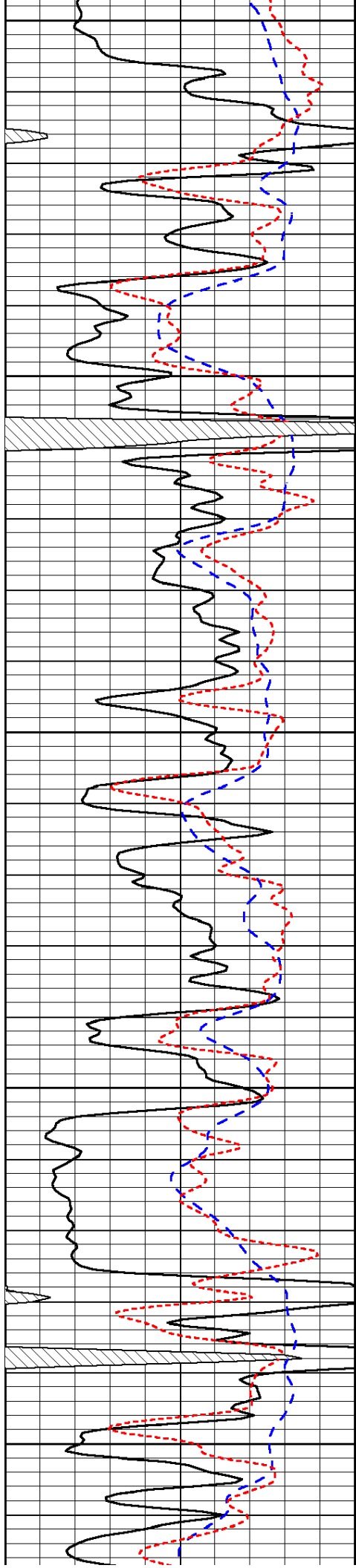


-32

-33

-31

-32



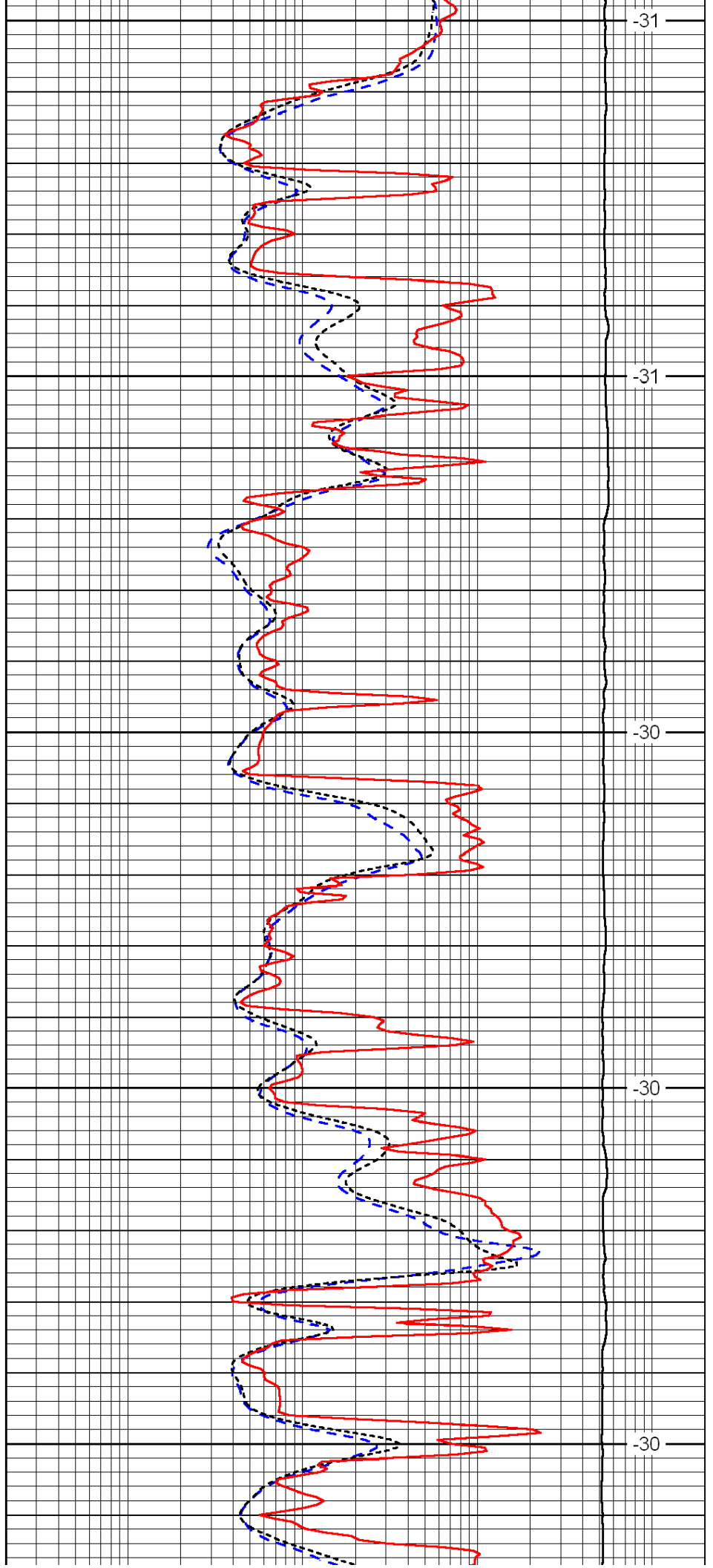
4100

4150

4200

4250

4300



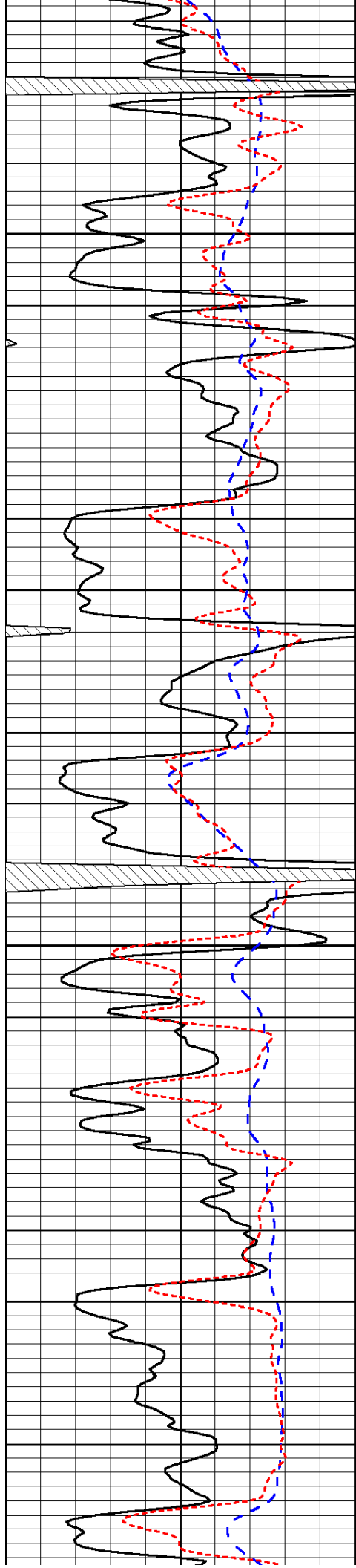
-31

-31

-30

-30

-30

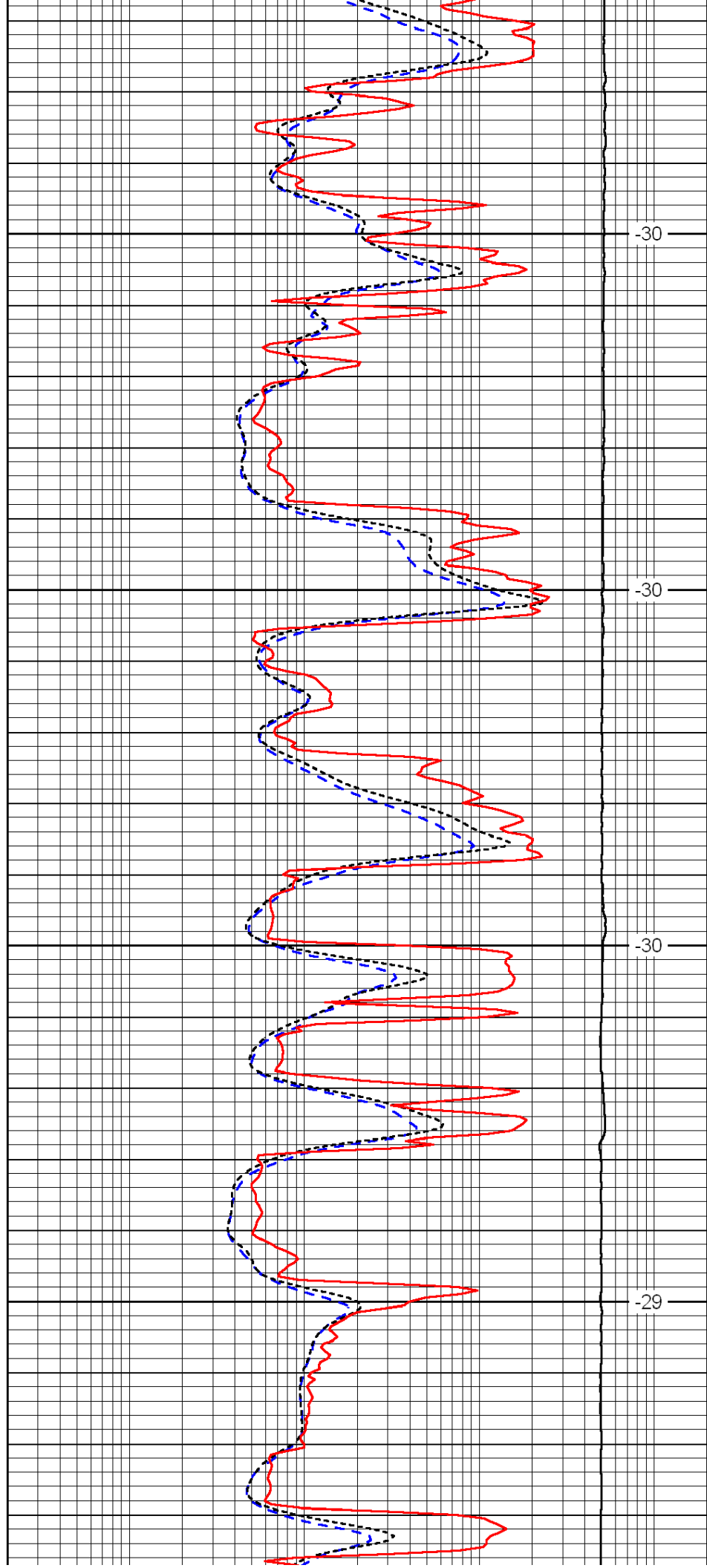


4350

4400

4450

4500

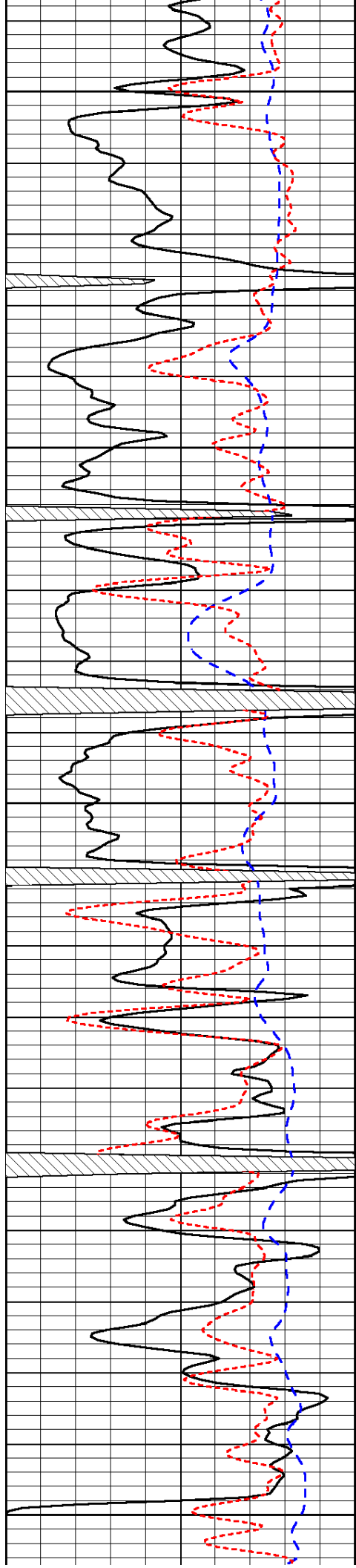


-30

-30

-30

-29



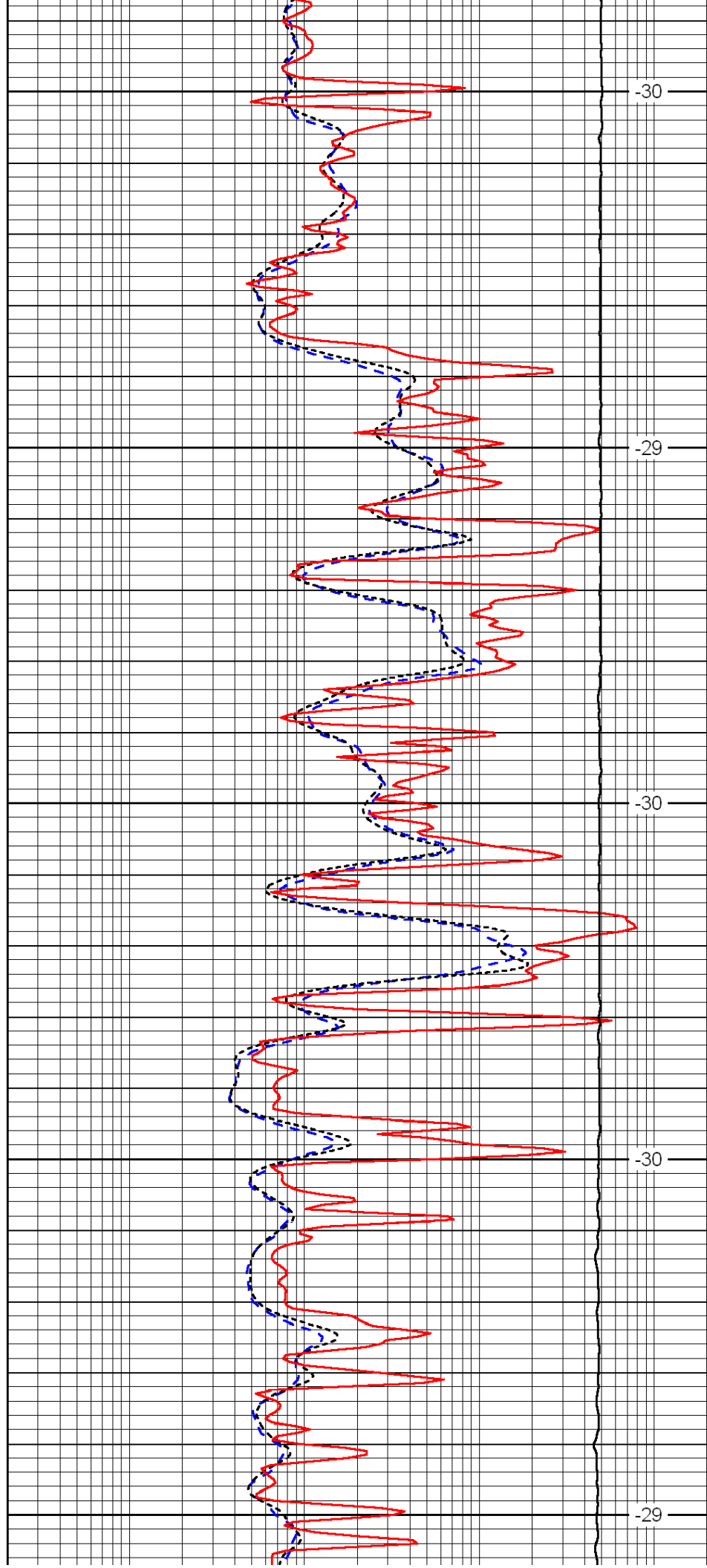
4550

4600

4650

4700

4750



-30

-29

-30

-30

-29

